



RIGIDFLEX SEMI-RIGID, DOUBLE-BOOT FITTINGS

Std. UV Design

Conduit & Small Diameter Pipe Applications (Small Housing 3.25" Hole)

RFSF.84	RigidFlex Entry Fitting for Flat Surface .84"	\$68	\$84
RFSC.84	RigidFlex Entry Fitting for Curved Surface .84"	\$68	\$84
RFSF1.0	RigidFlex Entry Fitting for Flat Surface 1.0"	\$68	\$84
RFSC1.0	RigidFlex Entry Fitting for Curved Surface 1.0"	\$68	\$84
RFSF1.26	RigidFlex Entry Fitting for Flat Surface 1.26"	\$68	\$84
RFSC1.26	RigidFlex Entry Fitting for Curved Surface 1.26"	\$68	\$84
RFSF1.4	RigidFlex Entry Fitting for Flat Surface 1.4"	\$68	\$84
RFSC1.4	RigidFlex Entry Fitting for Curved Surface 1.4"	\$68	\$84
RFSF1.6	RigidFlex Entry Fitting for Flat Surface 1.6"	\$68	\$84
RFSC1.6	RigidFlex Entry Fitting for Curved Surface 1.6"	\$68	\$84



Medium Diameter "Direct Bury" Pipe Applications (Medium Housing 5.5" Hole)

RFMF1.8	RigidFlex Entry Fitting for Flat Surface 1.8"	\$79	\$95
RFMC1.8	RigidFlex Entry Fitting for Curved Surface 1.8"	\$79	\$95
RFMF2.0	RigidFlex Entry Fitting for Flat Surface 2.0"	\$79	\$95
RFMC2.0	RigidFlex Entry Fitting for Curved Surface 2.0"	\$79	\$95
RFMF2.25	RigidFlex Entry Fitting for Flat Surface 2.25"	\$79	\$95
RFMC2.25	RigidFlex Entry Fitting for Curved Surface 2.25"	\$79	\$95
RFMF2.5	RigidFlex Entry Fitting for Flat Surface 2.5"	\$79	\$95
RFMC2.5	RigidFlex Entry Fitting for Curved Surface 2.5"	\$79	\$95
RFMF2.7	RigidFlex Entry Fitting for Flat Surface 2.7"	\$79	\$95
RFMC2.7	RigidFlex Entry Fitting for Curved Surface 2.7"	\$79	\$95
RFMF3.0	RigidFlex Entry Fitting for Flat Surface 3.0"	\$79	\$95
RFMC3.0	RigidFlex Entry Fitting for Curved Surface 3.0"	\$79	\$95
RFMF3.3	RigidFlex Entry Fitting for Flat Surface 3.3"	\$79	\$95
RFMC3.3	RigidFlex Entry Fitting for Curved Surface 3.3"	\$79	\$95
RFMF3.5	RigidFlex Entry Fitting for Flat Surface 3.5"	\$79	\$95
RFMC3.5	RigidFlex Entry Fitting for Curved Surface 3.5"	\$79	\$95
RFMF3.7	RigidFlex Entry Fitting for Flat Surface 3.7"	\$79	\$95
RFMC3.7	RigidFlex Entry Fitting for Curved Surface 3.7"	\$79	\$95



Medium Diameter Pipe Applications w/ 4" Ducting to Outer Boot (Medium Housing 5.5" Hole)

RFMF4.8x1.8	RigidFlex Entry Fitting for Flat Surface 4.8" x 1.8"	\$95	\$110
RFMC4.8x1.8	RigidFlex Entry Fitting for Curved Surface 4.8" x 1.8"	\$95	\$110
RFMF4.8x2.0	RigidFlex Entry Fitting for Flat Surface 4.8" x 2.0"	\$95	\$110
RFMC4.8x2.0	RigidFlex Entry Fitting for Curved Surface 4.8" x 2.0"	\$95	\$110
RFMF4.8x2.25	RigidFlex Entry Fitting for Flat Surface 4.8" x 2.25"	\$95	\$110
RFMC4.8x2.25	RigidFlex Entry Fitting for Curved Surface 4.8" x 2.25"	\$95	\$110
RFMF4.8x2.5	RigidFlex Entry Fitting for Flat Surface 4.8" x 2.5"	\$95	\$110
RFMC4.8x2.5	RigidFlex Entry Fitting for Curved Surface 4.8" x 2.5"	\$95	\$110
RFMF4.8x2.7	RigidFlex Entry Fitting for Flat Surface 4.8" x 2.7"	\$95	\$110
RFMC4.8x2.7	RigidFlex Entry Fitting for Curved Surface 4.8" x 2.7"	\$95	\$110



* Add an "F" to the end of the part number for "filled" option. Add a "UV" to the end for White colored AST UV resistant design.



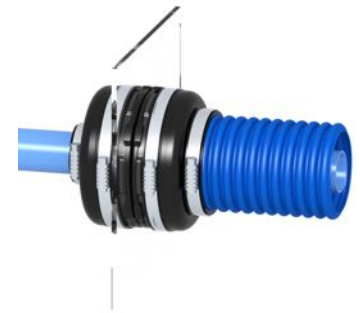
Large Diameter “Direct Bury” Pipe Applications (Large Housing 6.625” Hole)

RFLF4.3	RigidFlex Entry Fitting for Flat Surface 4.3”	\$95	\$110
RFLC4.3	RigidFlex Entry Fitting for Curved Surface 4.3”	\$95	\$110
RFLF4.5	RigidFlex Entry Fitting for Flat Surface 4.5”	\$95	\$110
RFLC4.5	RigidFlex Entry Fitting for Curved Surface 4.5”	\$95	\$110
RFLF4.7	RigidFlex Entry Fitting for Flat Surface 4.7”	\$95	\$110
RFLC4.7	RigidFlex Entry Fitting for Curved Surface 4.7”	\$95	\$110
RFLF5.0	RigidFlex Entry Fitting for Flat Surface 5.0”	\$95	\$110
RFLC5.0	RigidFlex Entry Fitting for Curved Surface 5.0”	\$95	\$110
RFLF5.3	RigidFlex Entry Fitting for Flat Surface 5.3”	\$95	\$110
RFLC5.3	RigidFlex Entry Fitting for Curved Surface 5.3”	\$95	\$110
RFLF1.9x1.4D	RigidFlex Entry Fitting for Flat Surface & Dual Entry	\$145	\$175
RFLC1.9x1.4D	RigidFlex Entry Fitting for Curved & Dual Entry	\$145	\$175



Large Fittings for 4” Ducting Through Fitting Application (Large Housing 6.625” Hole)

RFLF4.8x2.0	RigidFlex Fitting for Flat Surface 4.8” x 2.0”	\$95	\$110
RFLC4.8x2.0	RigidFlex Fitting for Curved Surface 4.8” x 2.0”	\$95	\$110
RFLF4.8x2.25	RigidFlex Fitting for Flat Surface 4.8” x 2.25”	\$95	\$110
RFLC4.8x2.25	RigidFlex Fitting for Curved Surface 4.8” x 2.25”	\$95	\$110
RFLF4.8x2.5	RigidFlex Fitting for Flat Surface 4.8” x 2.5”	\$95	\$110
RFLC4.8x2.5	RigidFlex Fitting for Curved Surface 4.8” x 2.5”	\$95	\$110
RFLF4.8x2.7	RigidFlex Fitting for Flat Surface 4.8” x 2.7”	\$95	\$110
RFLC4.8x2.7	RigidFlex Fitting for Curved Surface 4.8” x 2.7”	\$95	\$110
RFLF4.8	RigidFlex Fitting for Flat Surface 4.8”	\$95	\$110
RFLC4.8	RigidFlex Fitting for Curved Surface 4.8”	\$95	\$110



Extra-Large Fittings for 6” to 12” Pipe Applications (Steel, PVC, Ductile Iron)

RFRLF6.3	RigidFlex Entry Fitting for Flat/Curved Surface 6.3”	\$300	\$350
RFRLF6.8	RigidFlex Entry Fitting for Flat/Curved Surface 6.8”	\$300	\$350
RFRLF8.8	RigidFlex Entry Fitting for Flat/Curved Surface 8.8”	\$300	\$350
RFRLF9.0	RigidFlex Entry Fitting for Flat/Curved Surface 9.0”	\$750	\$800
RFRLF11.0	RigidFlex Entry Fitting for Flat/Curved Surface 11.0”	\$750	\$800
RFRLF13.0	RigidFlex Entry Fitting for Flat/Curved Surface 13.0”	\$750	\$800



* Add an “F” to the end of the part number for “filled” option. Add a “UV” to the end for White colored AST UV resistant design.



RFECO SEMI-RIGID, SINGLE-BOOT FITTINGS

Std. UV Design

Conduit & Small Diameter Pipe Applications (Small Housing 3.25" Hole)

EcoSF.84	RFeco Entry Fitting for Flat Surface .84"	\$39	\$47
EcoSC.84	RFeco Entry Fitting for Curved Surface .84"	\$39	\$47
EcoSF1.0	RFeco Entry Fitting for Flat Surface 1.0"	\$39	\$47
EcoSC1.0	RFeco Entry Fitting for Curved Surface 1.0"	\$39	\$47
EcoSF1.3	RFeco Entry Fitting for Flat Surface 1.3"	\$39	\$47
EcoSC1.3	RFeco Entry Fitting for Curved Surface 1.3"	\$39	\$47
EcoSF1.4	RFeco Entry Fitting for Flat Surface 1.4"	\$39	\$47
EcoSC1.4	RFeco Entry Fitting for Curved Surface 1.4"	\$39	\$47
EcoSF1.6	RFeco Entry Fitting for Flat Surface 1.6"	\$39	\$47
EcoSC1.6	RFeco Entry Fitting for Curved Surface 1.6"	\$39	\$47



Medium Diameter "Direct Bury" Pipe Applications (Medium Housing 5.5" Hole)

EcoMF1.8	RFeco Entry Fitting for Flat Surface 1.8"	\$49	\$57
EcoMC1.8	RFeco Entry Fitting for Curved Surface 1.8"	\$49	\$57
EcoMF2.0	RFeco Entry Fitting for Flat Surface 2.0"	\$49	\$57
EcoMC2.0	RFeco Entry Fitting for Curved Surface 2.0"	\$49	\$57
EcoMF2.25	RFeco Entry Fitting for Flat Surface 2.25"	\$49	\$57
EcoMC2.25	RFeco Entry Fitting for Curved Surface 2.25"	\$49	\$57
EcoMF2.5	RFeco Entry Fitting for Flat Surface 2.5"	\$49	\$57
EcoMC2.5	RFeco Entry Fitting for Curved Surface 2.5"	\$49	\$57
EcoMF2.7	RFeco Entry Fitting for Flat Surface 2.7"	\$49	\$57
EcoMC2.7	RFeco Entry Fitting for Curved Surface 2.7"	\$49	\$57
EcoMF3.0	RFeco Entry Fitting for Flat Surface 3.0"	\$49	\$57
EcoMC3.0	RFeco Entry Fitting for Curved Surface 3.0"	\$49	\$57
EcoMF3.5	RFeco Entry Fitting for Flat Surface 3.5"	\$49	\$57
EcoMC3.5	RFeco Entry Fitting for Curved Surface 3.5"	\$49	\$57
EcoMF3.7	RFeco Entry Fitting for Flat Surface 3.7"	\$49	\$57
EcoMC3.7	RFeco Entry Fitting for Curved Surface 3.7"	\$49	\$57



Large Diameter "Direct Bury" Pipe Applications (Large Housing 6.625" Hole)

EcoLF4.3	RFeco Entry Fitting for Flat Surface 4.3"	\$59	\$67
EcoLC4.3	RFeco Entry Fitting for Curved Surface 4.3"	\$59	\$67
EcoLF4.5	RFeco Entry Fitting for Flat Surface 4.5"	\$59	\$67
EcoLC4.5	RFeco Entry Fitting for Curved Surface 4.5"	\$59	\$67
EcoLF4.7	RFeco Entry Fitting for Flat Surface 4.7"	\$59	\$67
EcoLC4.7	RFeco Entry Fitting for Curved Surface 4.7"	\$59	\$67
EcoLF4.8	RFeco Entry Fitting for Flat Surface 4.8"	\$59	\$67
EcoLC4.8	RFeco Entry Fitting for Curved Surface 4.8"	\$59	\$67
EcoLF5.0	RFeco Entry Fitting for Flat Surface 5.0"	\$59	\$67
EcoLC5.0	RFeco Entry Fitting for Curved Surface 5.0"	\$59	\$67
EcoLF5.3	RFeco Entry Fitting for Flat Surface 5.3"	\$59	\$67
EcoLC5.3	RFeco Entry Fitting for Curved Surface 5.3"	\$59	\$67
EcoLF1.9x1.4D	RFeco Entry Fitting for Flat & Dual Pipe Entry	\$95	\$67
EcoLC1.9x1.4D	RFeco Entry Fitting for Curved & Dual Pipe Entry	\$95	\$67



* Add an "F" to the end of the part number for "filled" option. Add a "UV" to the end for White colored AST UV resistant design.





REPLACEMENT GASKETS FOR RIGIDFLEX/RFECO HOUSINGS

RGSC	Replacement Gasket, Small Housing, Curved Surface (two)	\$20
RGSF	Replacement Gasket, Small Housing, Flat Surface (two)	\$20
RGMC	Replacement Gasket, Medium Housing, Curved Surface (two)	\$22
RGMF	Replacement Gasket, Medium Housing, Flat Surface (two)	\$22
RGLC	Replacement Gasket, Large Housing, Curved Surface (two)	\$25
RGLF	Replacement Gasket, Large Housing, Flat Surface (two)	\$25



SECONDARY TO PRIMARY LINE TEST FITTINGS

		Std.	UV Design	
TF 2.0x2.0	Test Fitting 2.0" x 2.0"	\$28	\$36	
TF 2.0x2.0A	Test Fitting 2.0" x 2.0" w/ Air Test Valve	\$37	\$45	
TF 2.5x2.5	Test Fitting 2.5" x 2.5"	\$28	\$36	
TF 2.5x2.5A	Test Fitting 2.5" x 2.5" w/ Air Test Valve	\$37	\$45	
TF 2.61x2.38LCX	Test Fitting 2.61" x 2.38" for LCX	\$28	\$36	
TF 2.61x2.38LCXA	Test Fitting 2.61" x 2.38" for LCX w/ Air Test Valve	\$37	\$45	
TF 3.5x2.4	Test Fitting 3.5" x 2.4"	\$41	\$49	
TF 3.5x2.4D	Test Fitting 3.5" x 2.4" w/ Drain	\$51	\$59	
TF 3.5x2.4A	Test Fitting 3.5" x 2.4" w/ Air Test Valve	\$51	\$59	
TF 3.5x2.4DA	Test Fitting 3.5" x 2.4" w/ Drain & Air Test Valve	\$61	\$69	
TF 3.5x2.4OS	Test Fitting 3.5" x 2.4" OffSet	\$63	\$71	
TF 3.5x2.4OSD	Test Fitting 3.5" x 2.4" OffSet w/ Drain	\$73	\$81	
TF 3.5x2.4OSA	Test Fitting 3.5" x 2.4" OffSet w/ Air Test Valve	\$73	\$81	
TF 3.5x2.4OSDA	Test Fitting 3.5" x 2.4" OffSet w/ Drain & Air Test Valve	\$83	\$91	
TF 3.72x3.5LCX	Test Fitting 3.72" x 3.5" for LCX	\$41	\$49	
TF 3.72x3.5LCXA	Test Fitting 3.72" x 3.5" for LCX w/ Air Test Valve	\$51	\$59	
TF 4.5x2.5	Test Fitting 4.5" x 2.5"	\$47	\$55	
TF 4.5x2.5A	Test Fitting 4.5" x 2.5" w/ Air Test Valve	\$56	\$64	
TF 4.5x3.5	Test Fitting 4.5" x 3.5"	\$47	\$55	
TF 4.5x3.5D	Test Fitting 4.5" x 3.5" w/ Drain	\$56	\$64	
TF 4.5x3.5A	Test Fitting 4.5" x 3.5" w/ Air Test Valve	\$56	\$64	
TF 4.5x3.5DA	Test Fitting 4.5" x 3.5" w/ Drain & Air Test Valve	\$66	\$74	
TF 4.5x3.5OS	Test Fitting 4.5" x 3.5" OffSet	\$75	\$83	
TF 4.5x3.5OSD	Test Fitting 4.5" x 3.5" OffSet w/ Drain	\$84	\$92	
TF 4.5x3.5OSA	Test Fitting 4.5" x 3.5" OffSet w/ Air Test Valve	\$84	\$92	
TF 4.5x3.5OSDA	Test Fitting 4.5" x 3.5" OffSet w/ Drain & Air Test Valve	\$94	\$102	
TF 4.5x4.5	Test Fitting 4.5" x 4.5"	\$92	\$100	
TF 4.5x4.5A	Test Fitting 4.5" x 4.5" w/ Air Test Valve	\$101	\$109	
TF 4.72x4.5LCX	Test Fitting 4.72" x 4.5" for LCX	\$55	\$63	
TF 4.72x4.5LCXA	Test Fitting 4.72" x 4.5" for LCX w/ Air Test Valve	\$65	\$73	
TF 4.8x2.0	Test Fitting 4.8" x 2.0"	\$66	\$74	
TF 4.8x2.0A	Test Fitting 4.8" x 2.0" w/ Air Test Valve	\$75	\$83	
TF 4.8x2.25	Test Fitting 4.8" x 2.25"	\$66	\$74	
TF 4.8x2.25A	Test Fitting 4.8" x 2.25" w/ Air Test Valve	\$75	\$83	
TF 4.8x2.5	Test Fitting 4.8" x 2.5"	\$66	\$74	
TF 4.8x2.5A	Test Fitting 4.8" x 2.5" w/ Air Test Valve	\$75	\$83	
TF 6.8x4.5	Test Fitting 6.8" x 4.5"	\$66	\$76	
TF 6.8x4.5A	Test Fitting 6.8" x 4.5" w/ Air Test Valve	\$75	\$85	



* Add a "UV" to the end of the part number for a White colored AST UV resistant design.





REDUCING INSERTS FOR FITTINGS

		Std.	UV Design
RI 1.4x.84	Reducing Insert 1.4" x .84"	\$16	\$24
RI 1.4x1.0	Reducing Insert 1.4" x 1.0"	\$16	\$24
RI 2.4x1.0	Reducing Insert 2.4" x 1.0"	\$42	\$50
RI 2.4x1.6	Reducing Insert 2.4" x 1.6"	\$25	\$33
RI 2.4x1.8	Reducing Insert 2.4" x 1.8"	\$25	\$33
RI 2.4x1.9	Reducing Insert 2.4" x 1.9"	\$25	\$33
RI 2.4x2.0	Reducing Insert 2.4" x 2.0"	\$25	\$33
RI 3.5x1.8	Reducing Insert 3.5" x 1.8"	\$33	\$41
RI 3.5x1.9	Reducing Insert 3.5" x 1.9"	\$58	\$68
RI 3.5x2.25	Reducing Insert 3.5" x 2.25"	\$33	\$41
RI 3.5x2.5	Reducing Insert 3.5" x 2.5"	\$33	\$41
RI 3.5x2.7	Reducing Insert 3.5" x 2.7"	\$33	\$41
RI 3.5x3.0	Reducing Insert 3.5" x 3.0"	\$33	\$41
RI 4.5x1.9	Reducing Insert 4.5" x 1.9"	\$104	\$119
RI 4.5x2.5	Reducing Insert 4.5" x 2.5"	\$46	\$56
RI 4.5x2.5OS	Reducing Insert 4.5" x 2.5" Off-Set Design	\$70	\$90
RI 4.5x2.7	Reducing Insert 4.5" x 2.7"	\$46	\$56
RI 4.5x2.8	Reducing Insert 4.5" x 2.8"	\$46	\$56
RI 4.5x3.0	Reducing Insert 4.5" x 3.0"	\$46	\$56
RI 4.5x3.3	Reducing Insert 4.5" x 3.3"	\$46	\$56
RI 4.5x3.5	Reducing Insert 4.5" x 3.5"	\$46	\$56
RI 4.5x3.7	Reducing Insert 4.5" x 3.7"	\$46	\$56
RI 4.8x2.25	Reducing Insert 4.8" x 2.25"	\$79	\$94
RI 4.8x2.5	Reducing Insert 4.8" x 2.5"	\$79	\$94
RI 4.8x3.5	Reducing Insert 4.8" x 3.5"	\$46	\$56
RI 6.8x3.5OS	Reducing Insert 6.8" x 3.5" Off-Set Design	\$80	\$100



* Add a "UV" to the end of the part number for a White colored AST UV resistant design.

DAM STOP/CENTRALIZER AND DUCT SEAL

RI 2.0xCD	Centralizer/Dam Stop for 4" Ducting x 2.0"	\$58
RI 2.25xCD	Centralizer/Dam Stop for 4" Ducting x 2.25"	\$58
RI 2.5xCD	Centralizer/Dam Stop for 4" Ducting x 2.5"	\$58
RI 2.7xCD	Centralizer/Dam Stop for 4" Ducting x 2.7"	\$58
RI 3.0xCD	Centralizer/Dam Stop for 4" Ducting x 3.0"	\$58
RI 3.5xCD	Centralizer/Dam Stop for 4" Ducting x 3.5"	\$58
RI 3.0xDS	Duct Seal for 3" Ducting	\$14
RI 4.0xDS	Duct Seal for 4" Ducting	\$17





INSTALLATION ACCESSORIES & MATERIALS

Fitting Gasket Sealants & Filler

AC SIKA10	Sikaflex Fitting Sealant, 10 oz Tube	\$10
AC SIKA10CASE	Sikaflex Fitting Sealant, 10 oz Tube, Case of 24	\$201
AC MGun10	Manual Heavy Duty Dispensing Gun for 10oz Tube	\$27
AC PGun10	Pneumatic Dispensing Gun for 10oz Tube	\$71
AC PSeal200	PetrolSeal Sealant/Filler, 200ml Cartridge	\$89
AC PSeal400	PetrolSeal Sealant/Filler, 400ml Cartridge	\$130
AC MGun200	Manual Dispensing Gun for 200ml Cartridge	\$179
AC MGun400	Manual Dispensing Gun for 400ml Cartridge	\$197
	<i>(Note: PetrolSeal is the sole specified sealant/filler for New Hampshire)</i>	
AC FastFill	Rapid Setting Fitting Filler, 20 oz Cartridge	\$79
AC MGun20	Manual Dispensing Gun for 20oz Cartridge	\$137
AC PGun20	Pneumatic Dispensing Gun for 20oz Cartridge	\$326
AC FastFuse	Fitting Bonding Solvent, 4oz Can (for XL fittings)	\$79



* Contact ZJI regarding the volume of sealant and/or filler needed for your fitting specification.

Fitting Hole Saws

AC HS3.25	Hole Saw Blade & Arbor 3.25" for Small Housing	\$48
AC HS5.5	Hole Saw Blade & Arbor 5.5" for Medium Housing	\$76
AC HS6.625	Hole Saw Blade & Arbor 6.625" for Large Housing	\$87
AC HS*.*	Hole Saw Blade & Arbor (size specification)	Per Quote



Secondary Line Integrity Test Kits

MC LTStandard	Secondary Line Testing Standard Jumper Kit	\$32.00
MC LTSingle	Secondary Line Testing Single Kit w/ Valve	\$58.00
MC LTDdouble	Secondary Line Testing Double Kit w/ Valve	\$95.00
MC LTCustom	Custom Secondary Line Testing Kits	Per Quote

