

United States Environmental Protection Agency
National Pollutant Discharge Elimination System
Notice of Intent (NOI) for coverage under the Small Municipal Separate
Storm Sewer System (MS4) General Permit (PRR040000) for Puerto Rico

2017 MAR 15 AM 11:19
RECEIVED
U.S. EPA
OFFICE OF
PUBLIC AFFAIRS

Part A. General Information

1. Name of Municipality or Organization: Municipality of Arecibo
2. Type: Federal State Municipality Other: _____
3. Existing Permittee: Yes No If yes, provide EPA NPDES Permit Number: PRR04 040029
4. Location Address:
 - a. Street: Jose de Diego Avenue Int De Hostos Street
Arecibo City Hall 2nd Floor
 - b. City: Arecibo State: PR Zip Code: 00613
5. Mailing Address:
 - a. Street: PO Box 1086
 - b. City: Arecibo State: PR Zip Code: 00613-9630
6. Telephone Number: 787-333-1063 Fax: _____
7. E-mail: areciboms4@gmail.com
8. Standard Industrial Classification (SIC) Code (see instructions for common codes): 9 1 9 9
9. Latitude: (use the format provided.) Longitude: (use the format provided.)
2.2.4.2 Approximate center of the regulated portion of the MS4.
18 ° 27 ' 38.31" N (degrees, minutes, seconds) 66 ° 44 ' 38.98" W (degrees, minutes, seconds)
Or
_____. _____ ° N (degrees decimal) _____ ° W (degrees decimal)

Part B. Primary MS4 Program Manager Contact Information

1. Name: Mr. Isaí Sanes
2. Position Title: Director-Arecibo MS4 Program
3. Stormwater Management Program (SWMP) Location (web address or physical location):
Arecibo City Hall 2nd Floor/ MS4 Program Office, Arecibo, PR 00613
4. Mailing Address:
 - a. Street: PO Box 1086
 - b. City: Arecibo State: PR Zip Code: 00613

5. Telephone Number: 787-333-1063

6. E-mail: areciboms4@gmail.com

Part C. Eligibility Determination

1. Endangered Species Act (ESA) determination complete? Yes No
- a. Eligibility Criteria (check all that apply): A B C D E F
2. National Historic Preservation Act (NHPA) determination complete? Yes No
- a. Eligibility Criteria (check all that apply): A B C D

Part D. Map/Boundaries

1. MS4/Organization Description of regulated boundaries (narrative):
The Municipality of Arecibo has a territorial extension of 171.22 sq mi, of which 45.23 sq mi are water bodies
According to the 2010 Census, its population is 96,440 inhabitants. Arecibo is located in the Northern Coastal
Plain Region. The city lies South of the Atlantic Ocean and North of the municipalities of Utuado and Ciale;
east of the municipality of Hatillo and west of the municipalities of Barceloneta and Florida. The
Of Arecibo is comprised of 19 wards. The most important water body in the Municipality is the "Río Grande de
Arecibo. The Municipality operates a separate storm sewer system which includes the 19 wards within its territorial limits.
This system is interconnected with the Puerto Rico Highway and Transportation Authority and the Puerto Rico Aqueduct and Sewer
(PRASA) combine system.
2. Location Map/Boundaries. A location map must be attached showing the pertinent city, town, wards, or boundaries, the boundaries of the Small MS4, including surface water body(s), and the "urbanized area" (UA) when applicable.
- Is map attached? Yes No

Part E. MS4 Infrastructure (if covered under the 2006 general permit)

1. Estimated Percent of Outfall Map Complete? (Section 4.2.3 of 2006 general permit): 20 %
- a. If 100% of 2006 requirements are not met, enter an estimated date of completion: 4Q2018
 (MM/DD/YYYY)
- b. Web address where MS4 map is published: Refer to Appendix B
If outfall map is unavailable on the internet an electronic or paper copy of the outfall map must be included with NOI submission.

Part F. Bylaw/Ordinance Development (if covered under the 2006 general permit)

1. Illicit Discharge Detection and Elimination (IDDE) authority adopted? Yes No
- a. Effective Date or Estimated Date of Adoption: 05/02/2012
 (MM/DD/YYYY)

2. Construction/Erosion and Sediment Control authority adopted? Yes No

a. Effective Date or Estimated Date of Adoption: 05/02/2012
(MM/DD/YYYY)

3. Post-Construction Stormwater Management adopted? Yes No

a. Effective Date or Estimated Date of Adoption: 05/02/2012
(MM/DD/YYYY)

Part G. Receiving Waters

List the names of all surface waterbody segments to which your MS4 discharges. For each waterbody segment, please report the number of outfalls discharging into it and, if applicable, any impairments. You may attach additional information.

Waterbody Segment that receives flow from the MS4	Number of Outfalls into receiving waterbody segment	Have any monitoring been performed to outfalls? (Yes/No)	List of Pollutant(s) causing impairment (if applicable)	List of TMDL Pollutant (s) (if any)
Rio Grande de Arecibo - Canal Perdomo	Approximately 50	Yes	Fecal Coliforms Dissolved Oxygen Turbidity	Included in 2014 list for TMDL development within the next 2 years
Atlantic Ocean	Approximately 50	Yes	N/A	N/A
Rio Santiago	None	N/A	N/A	N/A
Quebrada La Regadera	Approximately 15	N/A	N/A	N/A
Caño Tiburones	Pending Survey	N/A	N/A	N/A

Part H. Summary of Stormwater Management Program (SWMP) under the 2006 Small MS4 General Permit

For every measurable goal and associated Best Management Practice (BMP) listed in the adopted program, provide the following information (You may include additional pages):

BMP Description or BMP ID (e.g. MCM-1)	Goal Achieved? (Yes/No)	Continued in next permit cycle? (Yes/No)	Who was the targeted audience? Explain reason for not achieving goal.	Modification(s) to goals or BMP for next permit cycle
(See Appendix A - BMP Description Table)				

Part I. 2016 Stormwater Management Program (SWMP) Summary

Public Education and Outreach (See Section 2.4.2 for detailed information of required BMPs):

BMP Description or BMP ID (e.g. MCM-1)	Education Topic (Identify the issue your BMP is educating the public about.)	Outreach Method (Describe the method used to convey this topic, e.g. mailing, events, school, etc.)	Measurable Goal (What is the end result of this program? What indicator will determine the goal has been met? (e.g., number mailing sent, people at event, class participation, etc.)
(See Appendix A - BMP Description Table)			

Part I. 2016 Stormwater Management Program (SWMP) Summary (continued)

Public Involvement and Participation (See Section 2.4.3 for detailed information of required BMPs):

BMP Description or BMP ID (e.g. MCM-1)	Program Description (Describe the program and how it will inspire public participation, e.g. special events, volunteer sampling and monitoring efforts, household hazardous waste recycling, etc.)	Measurable Goal (What is the end result of this program? What indicator will determine the goal has been met? (e.g., participation, amount of sampling performed, waste collected, etc.)
	(See Appendix A - BMP Description Table)	

Part I. 2016 Stormwater Management Program (SWMP) Summary (continued)

Illicit Discharge Detection and Elimination (See Section 2.4.4 for detailed information of required BMPs):

BMP Description or BMP ID (e.g. MCM-1)	Program Description (Describe the program and how it will identify and remove illicit connections from the MS4, e.g. new regulations, investigation practices, removal of illicit connections, etc.)	Measurable Goal (What is the end result of this program? What indicator will determine the goal has been met? (e.g., adoption of bylaws/ordinances, amount of investigation performed, identified and removed illicit connections, etc.)
	(See Appendix A - BMP Description Table)	

Part I. 2016 Stormwater Management Program (SWMP) Summary (continued)

Construction Site Stormwater Runoff Control (See Section 2.4.5 for detailed information of required BMPs):

BMP Description or BMP ID (e.g. MCM-1)	Program Description (Describe the program and how it will help control stormwater runoff at construction sites, e.g. new regulations, construction practices, inspection protocols, etc.)	Measurable Goal (What is the end result of this program? What indicator will determine the goal has been met? (e.g., adoption of bylaws/ordinances, amount of inspections performed and sites actively regulated, etc.)
	(See Appendix A -BMP Description Table)	

Part I. 2016 Stormwater Management Program (SWMP) Summary (continued)

Post-Construction Stormwater Management in New Development and Redevelopment (See Section 2.4.6 for detailed information of required BMPs):

BMP Description or BMP ID (e.g. MCM-1)	Program Description (Describe the program and how it will control stormwater runoff from properties after they are developed, e.g. new regulations, practices, or resources for contractors to use Low Impact Development (LID), etc.)	Measurable Goal (What is the end result of this program? What indicator will determine the goal has been met? (e.g., adoption of bylaws/ordinances, amount of implemented practices, development of capacity building resources, etc.)
	(See Appendix A - BMP Description Table)	

Part I. 2016 Stormwater Management Program (SWMP) Summary (continued)

Good Housekeeping and Pollution Prevention in Municipal Operations (See Section 2.4.7 for detailed information of required BMPs):

BMP Description or BMP ID (e.g. MCM-1)	Program Description (Describe the program and how it will mitigate stormwater runoff at municipal properties or through municipal activities, e.g. installation of structural stormwater controls on the municipal properties, new practices to reduce pollutant exposure to rain events, runoff management, trainings, etc.)	Measurable Goal (What is the end result of this program? What indicator will determine the goal has been met? (e.g., structural BMPs installed, SOPs developed and implemented, etc.)
	(See Attachment A - BMP description Table)	

Part J. Application Certification and Signature

I certify under penalty of law that this document and all attachments were prepared under my direction or supervision in accordance with a system designed to assure that qualified personnel properly gathered and evaluated the information submitted. Based on my inquiry of the person or persons who manage the system, or those persons directly responsible for gathering the information, the information submitted is, to the best of my knowledge and belief, true, accurate, and complete. I am aware that there are significant penalties for submitting false information, including the possibility of fine and imprisonment for knowing violations.

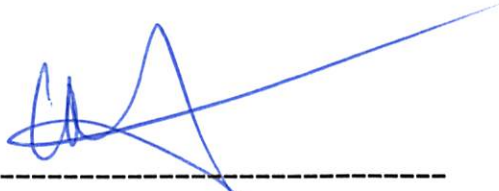
Signature of Mayor/Elected Official: _____

Print Name of Mayor/Elected Official: _____

Title: _____

Date: 9/29/16

SM



Hon. Carlos Molina Rodriguez
Mayor Municipality of Arecibo

**APPENDIX A - SUMMARY OF STORMWATER MANAGEMENT PROGRAM
(SWMP) UNDER THE 2006 SMALL MS4 GENERAL PERMIT
PERMIT # PRR040029**

1.1.1 Public Education & Outreach on Storm Water Impacts				
BMP Description	Goal Achieved?	Continue Next Permit Cycle (2016)?	Targeted Audience	Modification(s) to goals or BMP for next permit cycle
Develop General Awareness Message	Yes	Yes	General Public Students Municipal Employees Commerce	
Develop Educational Material	Yes	Yes	General Public Students Municipal Employees Commerce	
Distribution of Educational Material (2011-2015)	Yes	Yes	General Public Students Municipal Employees Commerce	Efforts to increase Spanish-language printed and online materials for program targets.
Develop the EEP	Yes	Yes	General Public Students Municipal Employees Commerce	Review in progress. Expected completion in late 2Q2017.
EEP Implementation	Yes	Yes	General Public Students Municipal Employees Commerce	MS4 Program Office distributes educational materials in all municipality-sponsored public activities.
Establish Environmental Programs in Schools & Conduct Workshops based on: <ul style="list-style-type: none"> • Storm water • Pollution Prevention • Recycling • Solid Waste Management 	Yes	Yes	Grade-school students and teachers	
Conduct Municipal Employees General Awareness training	Yes	Yes	Municipal Employees	
Conduct Directors Training	Yes	Yes	Municipal Employees	
Conduct Job-Specific BMP Training	Yes	Yes	Municipal Employees	
Conduct Farmers Training	No	Yes	Local Farmers	
Conduct Downtown Commerce Owners Training	No	Yes	Local Commerce Representatives	
Post General storm water Information on Website	Yes	Yes	General Public	

1.1.1 Public Education & Outreach on Storm Water Impacts				
BMP Description	Goal Achieved?	Continue Next Permit Cycle (2016)?	Targeted Audience	Modification(s) to goals or BMP for next permit cycle
Conduct Homeowners' Septic System Educational Conferences	No	Yes	General Public	MS4 Program to prioritize educational conference at boroughs not served by the PRASA sewer network.
Perform Community Recycling Educational Workshops	No	Yes	General Public	MS4 Program working jointly with municipal solid waste and recycling departments to accomplish this task.
Publish Articles on Storm Water Pollution Prevention	Yes	Yes	General Public	

1.1.2 Public Involvement/Participation				
BMP Description	Goal Achieved?	Continue Next Permit Cycle (2016)?	Targeted Audience	Modification(s) to goals or BMP for next permit cycle
Volunteer Events (i.e. stream and lake cleanups)	No	Yes	General Public	MS4 Program to prioritize efforts in Caño Tiburones neighboring communities and DNER. Additional volunteer events to be incorporated into yearly action schedule.
Post storm water Blog Section on Municipality website	Yes	Yes	General Public	
Post SWMP Information on Website	Yes	Yes	General Public	
Develop and Implement a Storm Drain Labeling Program	Yes	Yes	General Public	SW drain label installation and maintenance fully managed with GIS tools.

1.1.3 Illicit Discharge Detection and Elimination				
BMP Description	Goal Achieved?	Continue Next Permit Cycle (2016)?	Targeted Audience	Modification(s) to goals or BMP for next permit cycle
Review of Existing Ordinance(s)	Yes	Yes	General Public	
Development and Adoption of IDDE Ordinance	Yes	Yes	General Public	

1.1.3 Illicit Discharge Detection and Elimination				
BMP Description	Goal Achieved?	Continue Next Permit Cycle (2016)?	Targeted Audience	Modification(s) to goals or BMP for next permit cycle
- Storm Sewer Mapping - Downtown Arecibo MS4 Maps - Phase I to IV urban areas MS4 maps	No	Yes	MS4 Program Office personnel General Public	MS4 Program to continue incorporating mapping data to GIS base map as it becomes available.
Develop the IDDE Plan	Yes	Yes	General Public	
Develop the municipal website	Yes	Yes	General Public Contractors Commerce owners Farmers	
Post IDDE Information and Interactive Tool on Municipal Website	Yes	Yes	General Public	
Investigate Illicit Discharge Reports	Yes	Yes	MS4 Program Office personnel	
Completion of Priority Dry-Weather Inspections	Yes	Yes	MS4 Program Office personnel	
Conduct Directors Training and Municipal Staff	Yes	Yes	MS4 Program Office personnel	
Develop Illicit Discharge Investigation SOP	Yes	Yes	MS4 Program Office personnel	
Conduct IDDE Training	Yes	Yes	MS4 Program Office personnel	
Identify and Eliminate Illicit Discharges	Yes	Yes	MS4 Program Office personnel	
Develop Septic System Educational Program	No	Yes	General Public	MS4 Program to prioritize educational conference at boroughs not served by the PRASA sewer network.
Identify Farming Activities	Yes	Yes	MS4 Program Office personnel General Public	Increased efforts on the way to fully catalog farming activities with the assistance of USDA.
Identify Municipal Facilities with Pollution Potential	Yes	Yes	MS4 Program Office personnel General Public	
Implement Storm Drain Labeling Program	Yes	Yes	General Public	SW drain label installation and maintenance fully managed with GIS tools.

1.1.4 Construction Site Storm Water Runoff Control				
BMP Description	Goal Achieved?	Continue Next Permit Cycle (2016)?	Targeted Audience	Modification(s) to goals or BMP for next permit cycle
Development and Adoption of a Construction Ordinance (2011-2012)	Yes	Yes	Contractors	
Develop Erosion and Sediment Control Plan Review SOP (2012)	Yes	Yes	Contractors	
Develop Construction Project Inspection SOP (2012)	Yes	Yes	Contractors	
Revise and Modify BID documents and Contracts (2012)	Yes	Yes	Municipal employees (procurement)	
Develop ERP	Yes	Yes	Municipal employees	
Develop Construction SW Pollution Prevention Educational Material	Yes	Yes	Contractors	
Conduct Plan Review Staff Trainings	Yes	Yes	MS4 Program employees	
Conduct Inspection Staff Trainings	Yes	Yes	MS4 Program employees	
Conduct Construction Contractor Training and Workshops	Yes	Yes	Contractors	
Public Project Inspections	Yes	Yes	Contractors	
Private Project Inspections	Yes	Yes	Contractors	
Construction Educational Information on Website	Yes	Yes	Contractors	
Construction SW Pollution Reporting Events Interactive Section in Website	Yes	Yes	General public Contractors	
Distribute Contractors' Brochure on Storm Water Events	Yes	Yes	General public Contractors	
Conduct Plan Reviews & Inspections	Yes	Yes	Contractors	

1.1.5 Construction Storm Water Management Development and Re-Development				
BMP Description	Goal Achieved?	Continue Next Permit Cycle (2016)?	Targeted Audience	Modification(s) to goals or BMP for next permit cycle
Development and Adoption of Post Construction Ordinance	Yes	Yes	Residential developments Contractors	
BMPs O&M Plan and SOP	Yes	Yes	Residential developments Contractors	
Post Construction Measures O&M Inspection SOP	Yes	Yes	MS4 Program personnel	
Stormwater Post-Construction ERP	Yes	Yes	MS4 Program personnel	
O&M Plan Review Staff Training	Yes	Yes	MS4 Program personnel	
O&M Plan Inspection Staff Trainings	Yes	Yes	MS4 Program personnel	
Post-Construction BMP O&M Plan	Yes	Yes	MS4 Program personnel	
Pre-Occupancy Inspections	No	Yes	Residential developments Contractors	MS4 Program Office to ramp up efforts to inspect finished construction developments prior to occupancy.
Post-Construction Educational Material	Yes	Yes	Residential developments Contractors	
Post-Construction Information on Website	Yes	Yes	Residential developments Contractors	

1.1.6 Pollution Prevention (Good Housekeeping for Municipal Operations)				
BMP Description	Goal Achieved?	Continue Next Permit Cycle (2016)?	Targeted Audience	Modification(s) to goals or BMP for next permit cycle
Facility Inventory & Inspections Program	Yes	Yes	Municipal employees	
Municipal Facilities Site Plan	Yes	Yes	Municipal employees	
MS4 GIS Maps	Yes	Yes	MS4 Program employees General public	
Municipal Facilities Staff Training	Yes	Yes	Municipal employees	
Develop Facility BMPs	Yes	Yes	Municipal employees	
MS4 System Cleaning Program	Yes	Yes	Municipal employees MS4 Program employees	

1.1.6 Pollution Prevention (Good Housekeeping for Municipal Operations)				
BMP Description	Goal Achieved?	Continue Next Permit Cycle (2016)?	Targeted Audience	Modification(s) to goals or BMP for next permit cycle
Sweep Streets	No	Yes	Municipal employees	MS4 Program to increase street sweeping efforts during next permit cycle.
Facility Prioritization	Yes	Yes	Yes	
La Puntilla Pump Station Operation and Preventive Maintenance Plan	Yes	Yes	Yes	
Health and Safety Pump Station Audit	Yes	Yes	Yes	
Solid Waste Collection and Disposal Monthly Report	No	Yes	Yes	MS4 Program to improve data collection effort during next permit cycle.

APPENDIX B - 2016 STORMWATER MANAGEMENT PROGRAM (SWMP)
SUMMARY
PERMIT # PRR040029

1.1.1 Public Education & Outreach on Storm Water Impacts			
BMP Description	Education Topic	Outreach Method	Measurable Goal
Develop General Awareness Message	Water Contamination Prevention MS4 Program Scope and General Information	Website Flyers, brochures, posters and signage Drain labels	Development of an Awareness Message
Develop Educational Material	Water Contamination Prevention MS4 Program Scope and General Information	Flyers and education material Presentations Labels	Amount of educational material published and distributed
Distribution of Educational Material	Water Contamination Prevention MS4 Program Scope and General Information	Flyers and education material Presentations Labels	Number of events conducted in which storm water materials are distributed or a storm water message is delivered.
Develop the EEP	Water Contamination Prevention MS4 Program Scope and General Information	Flyers and education material Presentations	Development of the EEP and periodic reviews
EEP Implementation	Water Contamination Prevention MS4 Program Scope and General Information	Flyers and education material Presentations	Number of individuals educated
Establish Environmental Programs in Schools & Conduct Workshops based on: <ul style="list-style-type: none"> • Storm water • Pollution Prevention • Recycling • Solid Waste Management 	Water Contamination Prevention MS4 Program Scope and General Information	School Presentations	Number of school-age children exposed to MS4 Program presentations
Conduct Municipal Employees General Awareness training	Water Contamination Prevention MS4 Program Scope and General Information	Presentations Flyers	Number of municipality employees that participated in general storm water awareness training
Conduct Directors Training	Water Contamination Prevention MS4 Program Scope and General Information	Presentations Flyers	Number of municipality directors trained
Conduct Job-Specific BMP Training	Water Contamination Prevention MS4 Program Scope and General Information	Presentations Flyers	Number of municipality employees trained regarding BMPs specific to their field work
Conduct Farmers Training	Agricultural BMP's Water Contamination Prevention MS4 Program Scope and General Information	Presentations Distribution of written educational material during municipality events.	Number of farmers trained

1.1.1 Public Education & Outreach on Storm Water Impacts			
BMP Description	Education Topic	Outreach Method	Measurable Goal
Conduct Downtown Commerce Owners Training	Water Contamination Prevention MS4 Program Scope and General Information	Presentations Distribution of written educational material during municipality events.	Number of downtown commerce owners trained
Post General storm water Information on Website	Water Contamination Prevention MS4 Program Scope and General Information Septic Tanks Oil Management	Articles on Local Papers and the Municipality Website	Number of articles published in local newspaper or web site
Conduct Homeowners' Septic System Educational Conferences	Septic Tank Operation, Management and Maintenance Water Contamination Prevention MS4 Program Scope and General Information	Presentations Distribution of written educational material during municipality events.	Number of homeowners educated on septic tank maintenance procedures
Perform Community Recycling Educational Workshops	Recycling and Compost Water Contamination Prevention MS4 Program Scope and General Information	Presentations Distribution of written educational material during municipality events.	Number of Recycling Program educational workshops
Publish Articles on Storm Water Pollution Prevention	Water Contamination Prevention MS4 Program Scope and General Information Septic Tanks Oil Management	Articles on Local Papers and the Municipality Website	Number of articles published on local newspaper or web site

1.1.2 Public Involvement/Participation		
BMP Description	Program Description	Measurable Goal
Inform and Solicit Public Input at the Municipality's Mayor Annual Plan Presentation Meetings	Once a year, allow for public input regarding MS4 Program budget and programmatic goals.	The Presentation of the SWMP and its implementation in the Annual Strategic Plan Presentation.
Volunteer Events (i.e. stream and lake cleanups)	Participation on diverse local and national clean up and awareness programs	Number of volunteers used to conduct activities with storm water benefits
Post storm water Blog Section on Municipality website	Publication of articles and other related MS4 information in the MS4 Program Office website.	Timely availability of SWMP documents and annual reports to the public in the municipality website.
Post SWMP Information on Website	Publication of articles and other related MS4 information in the MS4 Program Office website.	Timely availability of SWMP documents and annual reports to the public in the municipality website.
Develop and Implement a Storm Drain Labeling Program	Installation and monitoring of storm drain labels within the Arecibo urban area.	Number of labeled storm drains

1.1.3 Illicit Discharge Detection and Elimination		
BMP Description	Program Description	Measurable Goal
Review of Existing Ordinance(s)	Conduct a review of existing municipal regulations pursuant to stormwater quality. Develop new regulation if warranted.	Review of Existing Municipal Ordinances. Enact ordinances as necessary.
Development and Adoption of IDDE Ordinance	Develop new regulation pursuant to Illicit Discharge Detection and Elimination	Approval of an IDDE ordinance to prohibit illicit discharges
- Storm Sewer Mapping - Downtown Arecibo MS4 Maps - Phase I to IV urban areas MS4 maps	Mapping of stormwater infrastructure within the Arecibo urban area served by the MS4 system.	Completion of storm sewer map
Develop the IDDE Plan	Develop and implement and Illicit Discharge Detection and Elimination Plan	Develop IDDE Plan
Develop the municipal website	Develop the Municipality of Arecibo MS4 Program Office page within the Municipality of Arecibo website	Develop municipal website
Post IDDE Information and Interactive Tool on Municipal Website	Provide updated information on the IDDE program implementation in the Arecibo MS4 Program Office website.	Enable municipal website interactive tool to report Illicit Discharges Development
Investigate Illicit Discharge Reports	Execute an IDDE program	Percentage (%) of detected or reported illicit discharges investigated
Completion of Priority Dry-Weather Inspections	Execute a monitoring program for stormwater infrastructure aimed at detecting anomalous flows during dry weather conditions.	Completion of dry-weather inspections within priority areas of the MS4.
Conduct Directors Training and Municipal Staff	Annual training program	Number of trainings provided to municipality staff
Develop Illicit Discharge Investigation SOP	Preparation and annual revision of standard operation procedures	Development of an Illicit Discharge Investigation SOP
Conduct IDDE Training	Annual training program	Number of trainings provided to municipality staff
Identify and Eliminate Illicit Discharges	Site inspections and complaint program	Percentage (%) of detected or reported illicit discharges investigated
Develop Septic System Educational Program	Annual training program	Number of septic system owners educated about proper maintenance
Identify Farming Activities	Meetings with Servicio de Extension Agricola and site visits	Publish and timely update web based map of farming activities.
Identify Municipal Facilities with Pollution Potential	Annual Inspections	Publish and timely update web based map of municipal facilities with pollution potential
Implement Storm Drain Labeling Program	Label installation program	Number of wards where the storm drain labeling program has been implemented

1.1.4 Construction Site Storm Water Runoff Control		
BMP Description	Program Description	Measurable Goal
Development and Adoption of a Construction Ordinance (2011-2012)	Prepare MS4 program ordinance	Development of a construction program ordinance
Develop Erosion and Sediment Control Plan Review SOP (2012)	Development of Construction Erosion and Sediment Control Plan Review SOP and Inspection Program	Develop and implement a Construction Erosion and Sediment Control Plan Review SOP
Develop Construction Project Inspection SOP (2012)	Development of Construction Projects Inspection Program	Development of Construction Project Inspection and Violation Notification SOP
Revise and Modify BID documents and Contracts (2012)	Annual revision of BID Requirement Specifications Documents	Revision and Modification of BID requirement specifications documents and contract templates.
Develop ERP	Prepare MS4 program ordinance	Enforcement of SW requirements on construction projects, including available enforcement actions and timeframe for escalations
Develop Construction SW Pollution Prevention Educational Material	Contractor orientation program	Development of construction storm water pollution prevention educational material
Conduct Plan Review Staff Trainings	MS4 personnel annual training program	Number of plan review staff trained
Conduct Inspection Staff Trainings	MS4 personnel annual training program	Number of inspection staff trained
Conduct Construction Contractor Training and Workshops	Contractor training presentation program	Number of contractors trained
Public Project Inspections	Public project inspection program	Number of inspections conducted at each public qualifying project
Private Project Inspections	Private project inspections	Number of inspections conducted at each private qualifying project
Construction Educational Information on Website	Contractor training presentation program	Incorporate construction educational information on the municipal website
Construction SW Pollution Reporting Events Interactive Section in Website	Municipality of Arecibo – Website Application	Construction interactive section on municipal website to report erosion and sediment control violation taken place at Construction sites.
Distribute Contractors' Brochure on Storm Water Events	Contractor training presentation program	Number of storm water events where construction's BMPs fact sheet is distributed
Conduct Plan Reviews & Inspections	MS4 personnel annual training program	Conduct plan review Number of inspections conducted at each private qualifying project Number of inspections conducted at each public qualifying project

1.1.5 Construction Storm Water Management Development and Re-Development		
BMP Description	Program Description	Measurable Goal
Development and Adoption of Post Construction Ordinance	Prepare MS4 Program Ordinance	Development and implementation of Post-Construction Ordinance
BMPs O&M Plan and SOP	Develop BMPs O&M Plan Review SOP	Development of Stormwater BMPs O&M plan review SOP
Post Construction Measures O&M Inspection SOP	Develop Post Construction Measures O&M Inspection SOP	Development of Post-Construction Measures O&MP Inspection SOP
Stormwater Post-Construction ERP	Develop Stormwater Post-Construction ERP	Stormwater Post-Construction ERP Development
O&M Plan Review Staff Training	Conduct O&M Plan Review Staff Training	Number of plan review staff trained
O&M Plan Inspection Staff Trainings	Conduct O&M Plan Inspection Staff Trainings	Number of inspection staff trained
Post-Construction BMP O&M Plan	Conduct Post-Construction BMP O&M Plan revision for adequacy	Number of Post-Construction BMP O&M plans reviewed for adequacy
Pre-Occupancy Inspections	Conduct as-built inspections performed prior occupancy	Percentage of development projects with as-built inspections performed prior to occupancy
Post-Construction Educational Material	Development of Post-Construction educational material	Development and distribution of Post-Construction educational materials
Post-Construction Information on Website	Publish Post-Construction educational information on website	Post-construction information posted on MS4 Program website

1.1.6 Pollution Prevention (Good Housekeeping for Municipal Operations)		
BMP Description	Program Description	Measurable Goal
Facility Inventory & Inspections Program	Perform Initial Facility Inventory & Inspections Inspect Municipal Facilities Review Activities for Discharge Potential Develop Activity-Specific SOPs	Development of Municipal Facilities List Number and percentage of facility inspections completed Number and percentage of facility inspections completed Review Activities Activity SOPs completed to assist field staff in BMP implementation
Municipal Facilities Site Plan	Develop Spill Response Plan for Municipal Facilities	Development of a Municipal Facilities Site Plan Locate on-site pollutant sources away from drainage courses to prevent pollutants from being washed into drainage courses and streams. Development of Spill Response Plan that clearly outlines procedures to be followed in the event of an accidental spill on site Number of SWPPPs & SPCCP's completed

1.1.6 Pollution Prevention (Good Housekeeping for Municipal Operations)		
BMP Description	Program Description	Measurable Goal
MS4 GIS Maps	Incorporate Municipal Facilities on MS4 GIS Maps	Incorporation of municipal facilities in the SW MS4 GIS Maps.
Municipal Facilities Staff Training	Conduct Municipal Facilities Staff Training on Specific BMPs	Number and percentage of field staff trained in activity or facility specific BMPs.
Develop Facility BMPs	Implement Facility BMPs	Activity SOPs completed to assist field staff in BMP implementation
MS4 System Cleaning Program	Clean Debris from MS4	Number of catch basins and outfalls cleaned
Sweep Streets	Miles of streets swept monthly	Number of streets swept
Facility Prioritization	Review Facility Prioritization	Complete prioritization of municipal facilities on a yearly basis.
La Puntilla Pump Station Operation and Preventive Maintenance Plan	Develop La Puntilla Pump Station Operation and Preventive Maintenance Plan	Develop of La Puntilla Pump Station Operation and Preventive Maintenance Plan
Health and Safety Pump Station Audit	Performed annual health and safety audits	Conduct Health and Safety Pump Station audits on a yearly basis.
Solid Waste Collection and Disposal Monthly Report	Collect reports from street sweepers	Monthly reports of solid waste collection and disposal

APPENDIX B – MS4 MAPS

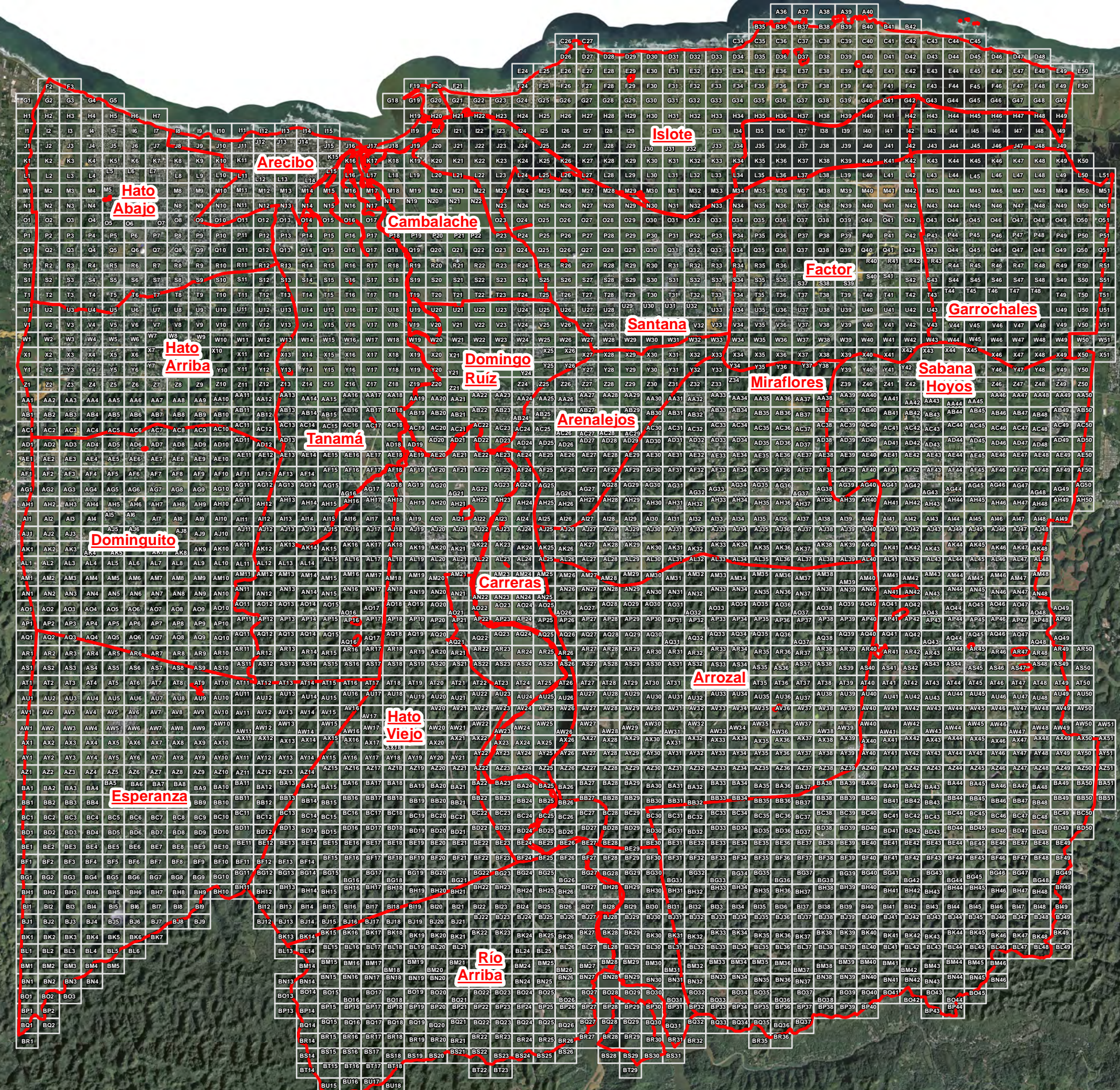
MS4 Office Compliance Grid

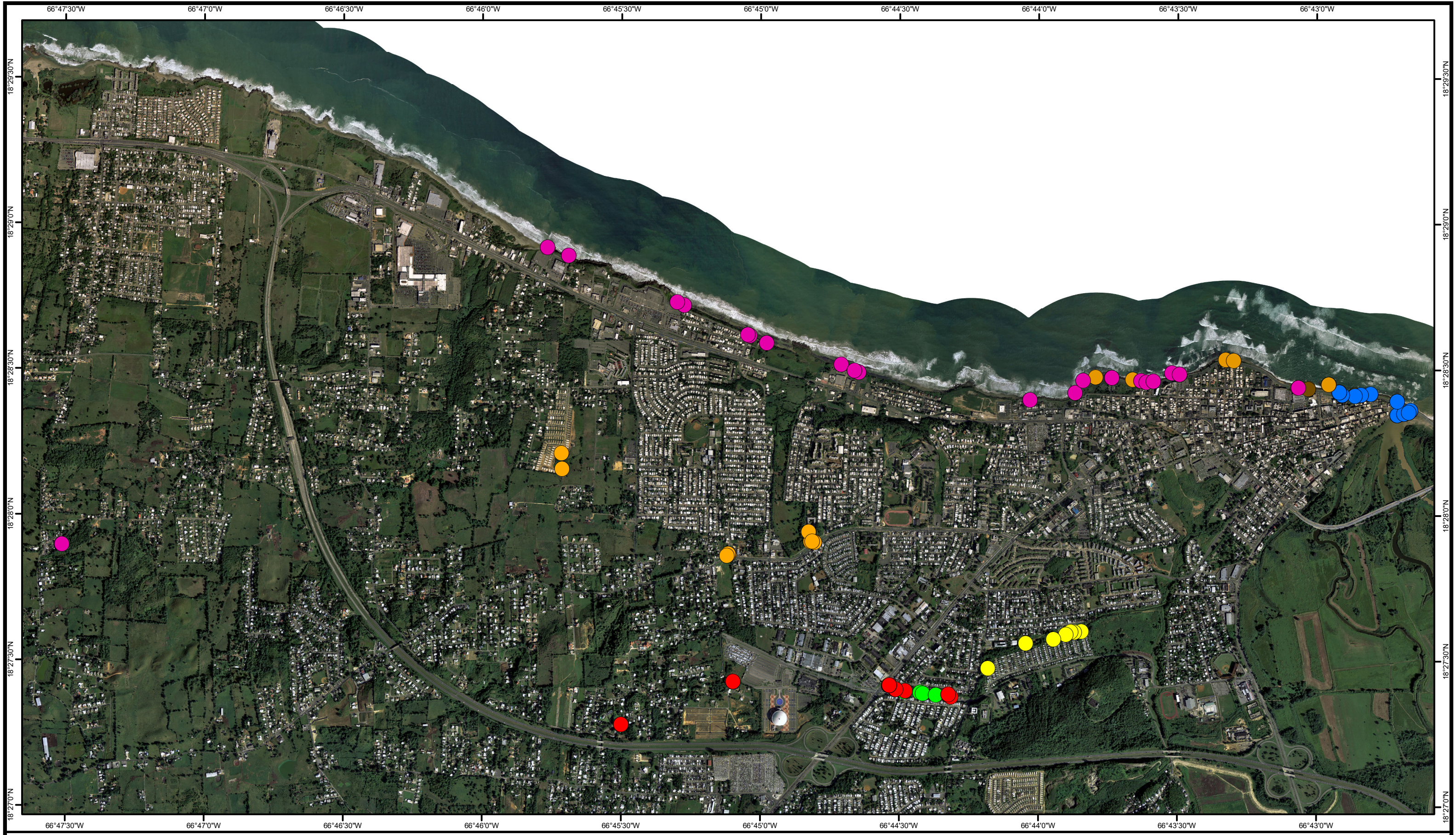


- Barrios
- MS4 Program Office Compliance Grid

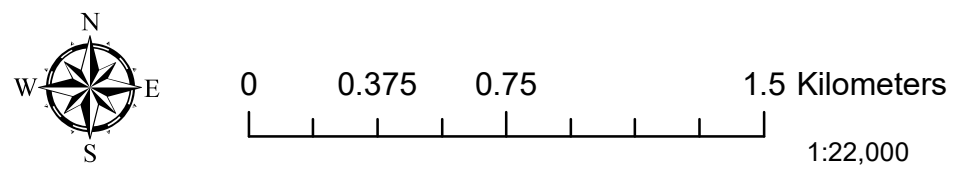


1:80,000





Municipality of Arcibo Outfall Reconnaissance Inventory
Arcibo Ward
As of February 24, 2017



Outfalls February 2017	● 2/7/2017	● 12/13/2016	● 10/27/2016
Collection Date	● 1/30/2017	● 11/18/2016	
	● 2/17/2017	● 10/26/2016	● 11/17/2016