

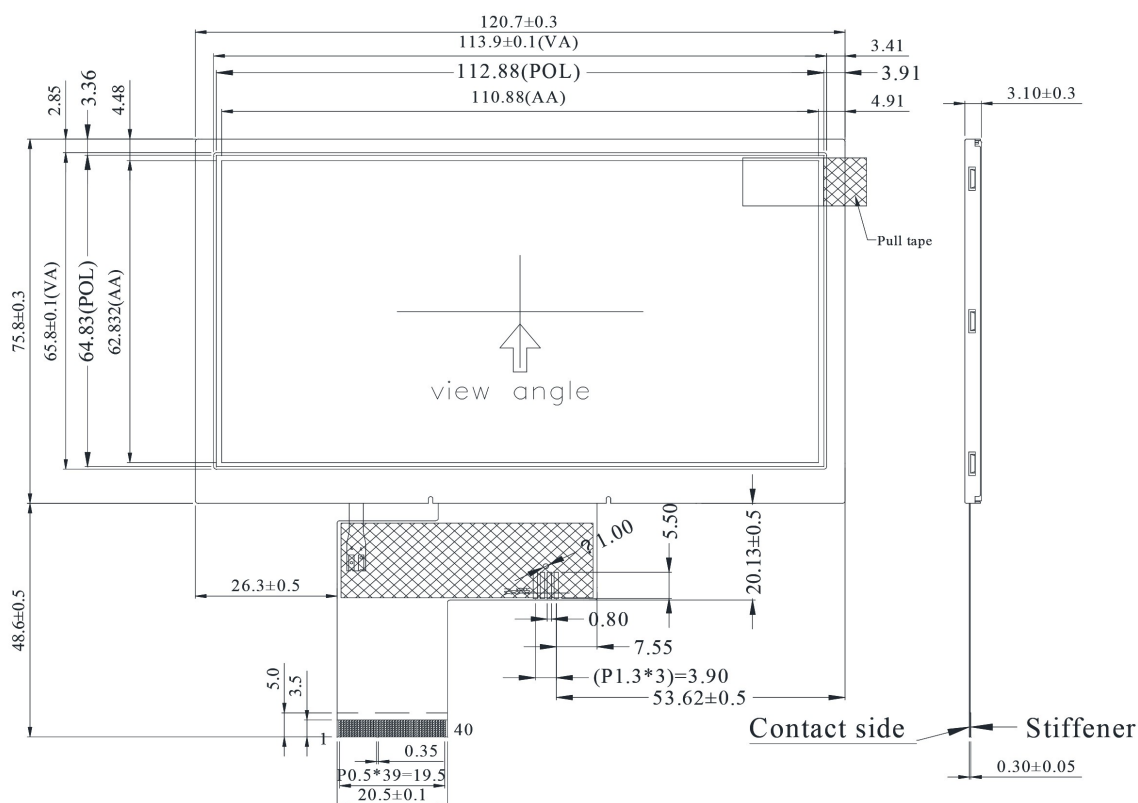
Aug, 2016

Product Introduction - 5 inch TFT WF50C

Winstar WF50C is a 5.0 inch diagonal full color 480x272 (WQVGA) TFT LCD display module. This module is built in with ILI6480H2 LCD driver IC; it supports 24 bit RGB parallel interface. WF50C model is having module dimension of 120.7 x 75.8 mm and active area size of 110.88 x 62.832 mm; it's supply voltage for logic range is from 3.0V to 3.6V; power supply voltage 3.3V.

This 5" TFT LCD module is landscape mode, it suitable for industrial control, medical application and etc. WF50C TFT LCD module can be operating at temperatures from -20°C to $+70^{\circ}\text{C}$; its storage temperatures range from -30°C to $+80^{\circ}\text{C}$. Below is the basic spec information for WF50C as reference.

Item-WF50C	Dimension
Size	5 inch
Dot Matrix	480 x RGB x 272(TFT)
Module dimension	120.7 x 75.8 x 3.1 mm
Active area	110.88 x 62.832 mm
Dot pitch	0.231 x 0.231 mm
LCD type	TFT, Normally White, Transmissive
View Direction	12 o'clock
Gray Scale Inversion Direction	6 o'clock
Backlight Type	LED, Normally White
Touch Panel	RTP option
Interface	RGB
Surface	Anti-Glare



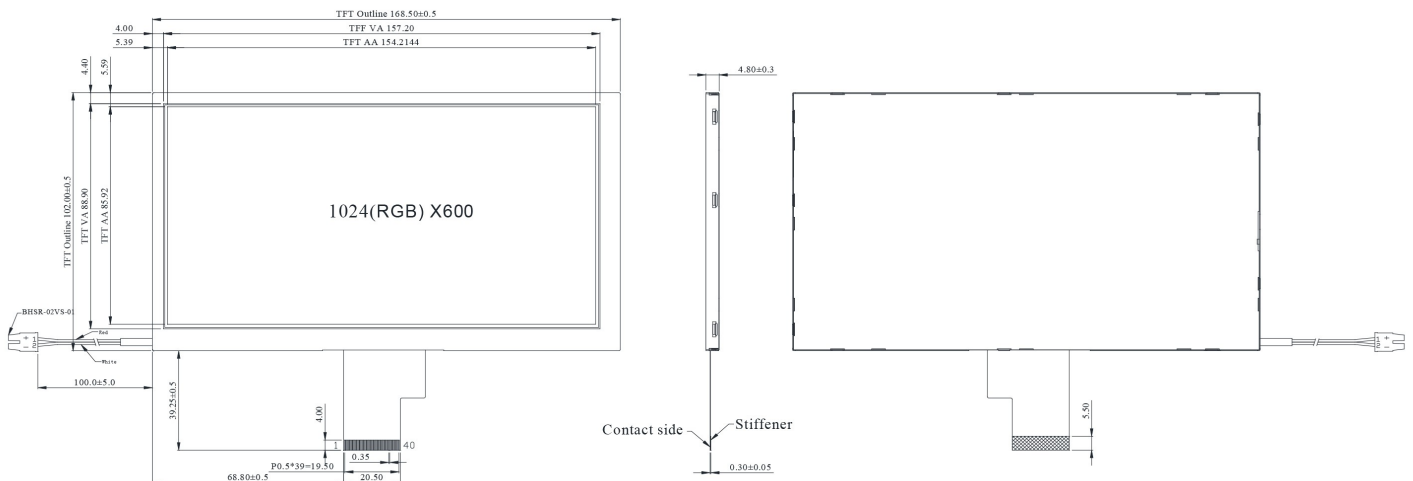
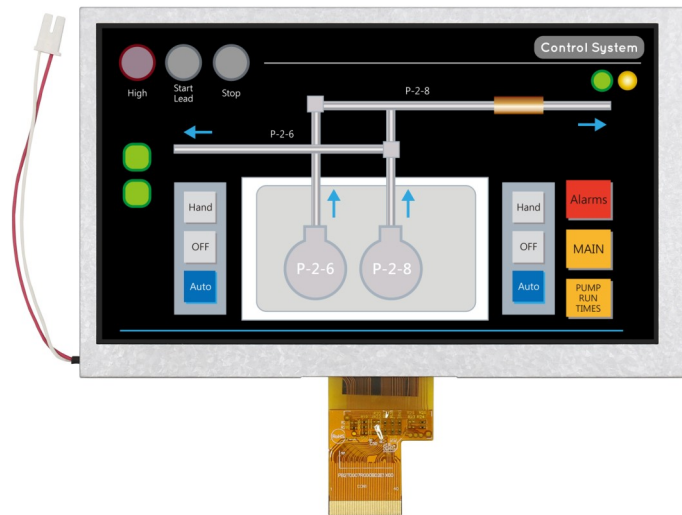


Product Introduction - LVDS 7 inch TFT WF70B High Brightness

WF70BSIAHLNN0 is a 7 inch high brightness TFT LCD module with the resolution of 1024x600 pixels. This TFT display WF70BSIAHLNN0 is with LVDS interface 40-pin including typical brightness 1100 cd/m2 and the operating temperature ranges from -20 to +70 °C and storage from -30 to +80 °C.

This model is having the outline dimension of 168.5 x 102.0 mm and AA size of 154.2114 x 85.92 mm. The power voltage (DVDD) is from 3.0v to 3.6v, typical 3.3V; this high brightness TFT LCD display module is very suitable for outdoor applications, for example, outdoor measuring equipment.

Item-WF70BSIAHLNN0#	Dimension- High Brightness
Size	7 inch
Dot Matrix	1024 x RGBx600(TFT)
Module dimension	168.5 x 102.0 x 4.8 mm
Active area	154.2114 x 85.92 mm
Dot pitch	0.1506 x 0.1432 mm
LCD type	TFT, Normally White, Transmissive
View Direction	12 o'clock
Gray Scale Inversion Direction	6 o'clock
Backlight Type	LED, Normally White
Touch Panel	CTP/RTP option
Interface	LVDS
Surface	Anti-Glare



LVDS 7 inch TFT WF70B with High Brightness & Wide View Angle

WF70BSZ AHLNN0 is a diagonal size 7 inch TFT LCD display with high brightness and wider viewing angle O-Film technology on module. This display is having the outline dimension of 168.5 x 102.0 mm and AA size of 154.2114 x 85.92 mm; resolution 1024x600 pixels, it supports 6-bit / 8-bit LVDS interface, 40-pins FPC pinout.

The power voltage (DVDD) for WF70BSZ AHLNN0 is from 3.0V to 3.6V, typical value 3.3V. This TFT LCD module is featured with high brightness 800 ~ 900 cd/m² and wider view angle range of Left: 75 / Right: 75 / Up: 75 / Down: 75 degree. It can be operating at temperatures from -20°C to +70°C; its storage temperatures range from -30°C to +80°C. This WF70BSZ AHLNN0 is very suitable for outdoor applications, for example, outdoor measuring equipment, GPS Navigation system.

Item- WF70BSZ AHLNN0#	Dimension- High Brightness +O Film
Size	7 inch
Dot Matrix	1024 x RGBx600 (TFT)
Module dimension	168.5 x 102.0 x 4.8 mm
Active area	154.2114 x 85.92 mm
Dot pitch	0.1506 x 0.1432 mm
LCD type	TFT, Normally White, Transmissive
View Direction	12 o'clock
Gray Scale Inversion Direction	6 o'clock
Backlight Type	LED, Normally White
Touch Panel	CTP/RTP option
Interface	LVDS
Surface	Anti-Glare

