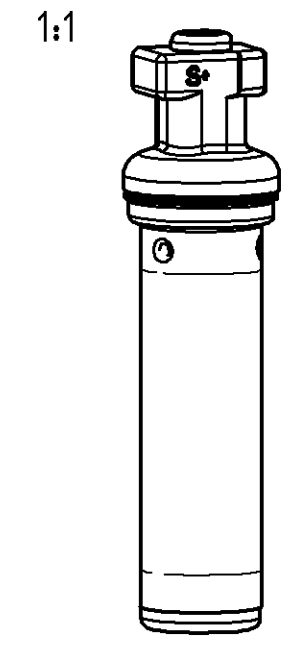
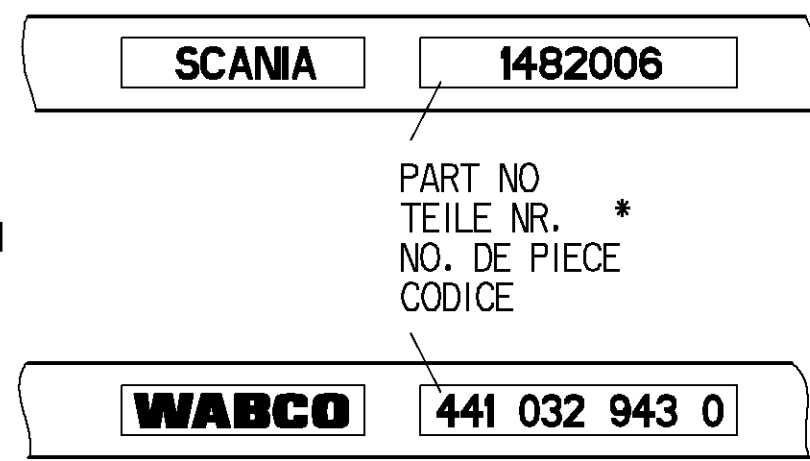


- TWO CORE CABLE
LEITUNG ZWEIADRIG
CABLE A DEUX CONDUCTEURS
CAVO A DUE CONDUTTORI } THERMORAD
2x0.96mm²
- STRAIN RELIEF CABLE
ZUGENTLASTUNG KABEL
ARRET DE CABLE
SCARICO DI TRAZIONE DEL CAVO } MAX.50N $\vartheta = 20^{\circ}\text{C}$
- BEND RADIUS CABLE
BIEGERADIUS KABEL
RAYON DE COURBURE DE CABLE
RAGGIO DI CURVATURA DEL CAVO } R 15 MIN, $\sphericalangle 90^{\circ}$
- * ABRASION RESISTANT PRINT
ABRIEBFESTER AUFDRUCK
IMPRESSION RESISTANTE A L' ABRASION
IMPRONTA RESISTENTE ALL' ABRASIONE } RAL 9001
- DEGREE OF PROTECTION
SCHUTZART
DEGRE DE PROTECTION
GRADO DI PROTEZIONE } IP 68
EN 60529/IEC 529



- THERMAL RANGE OF APPLICATION FOR SENSOR
THERMISCHER ANWENDUNGSBEREICH FUER SENSOR
GAMME D'APPLICATION THERMIQUE POUR SENSOR
CAMPO TERMICO D'APPLICAZIONE DEL SENSORE } -40 °C...+150 °C
+180 °C[1h]
- THERMAL RANGE OF APPLICATION FOR CABLE
THERMISCHER ANWENDUNGSBEREICH FUER KABEL
GAMME D'APPLICATION THERMIQUE POUR CABLE
CAMPO TERMICO D'APPLICAZIONE DEL CAVO } -40 °C...+180 °C
+220 °C[1h]
- THERMAL RANGE OF APPLICATION FOR CORRUGATED HOSE
THERMISCHER ANWENDUNGSBEREICH FUER WELLROHR
GAMME D'APPLICATION THERMIQUE POUR TUYAU ONDULE
CAMPO TERMICO D'APPLICAZIONE DEL TUBO ONDULATO } -40 °C...+150 °C
- THERMAL RANGE OF APPLICATION FOR PLUG
THERMISCHER ANWENDUNGSBEREICH FUER STECKER
GAMME D'APPLICATION THERMIQUE POUR FICHE
CAMPO TERMICO D'APPLICAZIONE DEL SPINA } -40 °C...+125 °C

FURTHER TECHNICAL DATA SEE PRODUCT SPECIFICATION
WEITERE TECHNISCHE DATEN SIEHE PRODUKT SPEZIFIKATION
AUTRES DONNEES TECHNIQUES VOIR PRODUCT SPECIFICATION
ULTERIORI DATI TECNICI VEDERE SPECIFICA DI PRODOTTO } 441 032 901 0

INSTRUCTIONS OF INSTALLATION SEE ADAPTATION SPECIFICATION
EINBAUINWEISE SIEHE ADAPTION-SPEZIFIKATION
INSTRUCTIONS D'INSTALLATION VOIR SPECIFICATION D'ADAPTION
ISRUZIONI D'INSTALLAZIONE VEDERE SPECIFICA D'ADATTAMENTO } 441 032 602 0
[CODE 602]

GENERAL SPECIFICATION: JED-334.0		Pro/ENGINEER DRAWING COPYRIGHT		WABCO	
FURTHER TECHNICAL DATA:		DATE SIGNATURE		INDUCTIVE SENSOR WITH PLUG STABSENSOR MIT STECKER	
DOC. CODE: SHEET: TO		DRAWN 01-11-09 HARNVISCHM.		CAPTEUR AVEC FICHE SENSORE INDUTTIVO CON SPINA	
GENERAL TOLERANCES		CHECKED 01-11-09 HOEFLER		PRODUCT IDENTIFICATION NO.	
RANGE OF NOMINAL DIMENSIONS (± mm)		EXPERT CODE 7 6 0		441 032 943 0	
CLASS	1) ≤ 50	> 50 ≤ 180	1.5	2.0	DOC. CODE
FINE	0.5	1.0	1.5	2.0	605
MEDIUM	1.0	2.0	3.0	4.0	SHEET
COARSE	2.0	3.5	5.0	6.5	1/1
TAPPED HOLES ACC. ISO 4039 / JED-152		MASS SCALE		REPLACEMENT FOR	
1) TOLERANCE CLASS APPLIED CROSSMARKED		.110 KG 1:1		FUNCTION CODE SHAPE CODE PRODUCT TYPE	
DCN-NO. REV. DATE		SIZE TRI		0 2	
		A 2 142			

NON E' PERMESSO CONSERVARE A TERZI O RIPRODURRE QUESTO DOCUMENTO, NE UTILIZZARE IL CONTENUTO O RENDERSI RESPONSABILI PER QUALSIASI DANNI, PERDITE O INTERRUZIONI DI ATTIVITA' DERIVANTI DA QUESTO DOCUMENTO. IL DIRITTO DI RIPRODUZIONE E' RISERVATO A WABCO. TUTTI I DIRITTI RISERVATI DA BREVETTI O MODELLI.
 COPIING OF THIS DOCUMENT AND GIVING IT TO OTHERS AND THE USE OR COMMUNICATION OF THE CONTENTS THEREOF, WITHOUT THE WRITTEN PERMISSION OF WABCO, IS PROHIBITED. WABCO ASSUMES NO LIABILITY IN THE EVENT OF THE ABUSE AND RESULT IN A LIABILITY TO THE PAYMENT OF DAMAGES. ALL RIGHTS ARE RESERVED IN THE EVENT OF THE GRANT OF PATENT OR REGISTRATION OF A UTILITY MODEL OR DESIGN. THIS DOCUMENT IS THE SUBJECT OF COPYRIGHT.
 TOUTE COMMUNICATION OU REPRODUCTION DE CE DOCUMENT, TOUTE EXPLOITATION OU COMMUNICATION DE SON CONTENU, SANS LA PERMISSE ECRITE DE WABCO, EST PROHIBEE. WABCO NE PREND RAUCUN RESPONSABILITE EN CAS D'ABUS, DE PERDITE OU D'INTERUPTION D'ACTIVITE' DERIVANT DE CE DOCUMENT. LE DROIT DE REPRODUCTION EST RESERVE A WABCO. TOUS DROITS DE PROPRIETE INDUSTRIELLE RESERVES, NOTAMMENT EN MATIERE DE BREVETS ET DE MODELES.
 WELTEREABE SOWIE VEREINFACHLICHUNG DIESER UNTERLAGE, VERNERUNG UND MITTEILUNG DIESER INHALTS NICHT ZU VERBODEN. WABCO ANNEHMT KEINE VERANTWORTUNG FUR MISSBRÄUCH UND ERGEBNISSE DIESER VERANTWORTUNG. ALLE RECHTE FUER DEN FALL DER PATENTIERUNG ODER GEBRAUCHSMUSTER-ENTWURF VORBEHALTEN.