



The HFO3 Series Tube-Ice machine continues the Vogt tradition of providing long lasting machine reliability, delivered capacity and lower energy cost solutions. This 3 ton of ice per day machine utilizes HFO refrigerants with low GWP and zero ODP. Available as a self contained water cooled unit or air-cooled remote, the HFO3 will provide you with years of dependable service without the fear of refrigerant obsolescence.

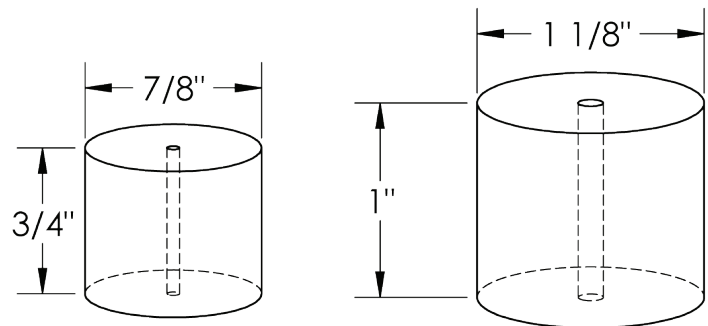
Heavy-duty industrial construction, automatic operation, energy efficiency and the best warranty in the business make the Vogt HFO3 Series the only "clear" choice for your ice making needs.

HFO3 Standard Features:

- ★ 25 Year Evaporator Warranty
- ★ 452A Refrigerant
- ★ Allen-Bradley PLC with thermocouples, pressure transducers and multiple built-in safeties
- ★ 10.1" wide HMI display with remote access capability*
- ★ Water-cooled or remote air-cooled operation
- ★ Export crating (ISPM-15 Rated)
- ★ Electronic Ice bin thermostat
- ★ Voltage - 208/230v., 3p., 60hz.

**Requires connection to Internet (ethernet connection)*

HFO3 Tube-Ice Available in Two Ice Sizes:



Energy usage based on makeup water temperature of 70 ° F. (21 ° C.), ambient (air) temperature of 90 ° F. (32 ° C.).

Capacity rating is average for the model.

Individual machines may vary +/- 5%.

Capacity based on ambient (air) temperature of 90 ° F. (32 ° C.).

Capacity reduced 17% for 50hz. operation.

Makeup water usage includes 20% blowdown.

HFO3 Options:

- ★ Voltage - 460v., 3p., 60hz.
- ★ Voltage - 400v., 3p., 50hz.
- ★ Voltage - 200v., 3p., 50hz. or 230v., 3p., 50hz.
- ★ Voltage - 575v., 3p., 60hz.
- ★ High ambient air-cooled condenser
- ★ Electro-fin coated condenser
- ★ Condenser for sea water
- ★ Dual Ice Feature (cylinder and crushed ice)
- ★ Cutter for 1-1/2" long ice
- ★ Stainless steel casings
- ★ Power monitor (for 60hz.)
- ★ "CE" Approval (400v, 50hz only)
- ★ Canadian Registration Number (CRN)
- ★ Export crating (ISPM-15 Rated)

Model	Machine Capacity					
	Make-Up Temperature					
	50°F (10°C)		70°F (21°C)		90°F (32 °C)	
	Lbs	Kg	Lbs	Kg	Lbs	Kg
HFO3 - 1"	6,686	3033	6,024	2732	5,482	2487
HFO3 - 1 1/4"	6,347	2879	5,725	2597	5,188	2353

Water Usage					
Ice Making				Condenser	
Gal/100lbs	Liters/100lbs	GPM	LPM	GPM	LPM
14.5	54.9	0.55	2.08	10.5	39.7
		0.53	2.01		

Vogt Ice LLC

1000 W. Ormsby Avenue

Louisville, KY 40210

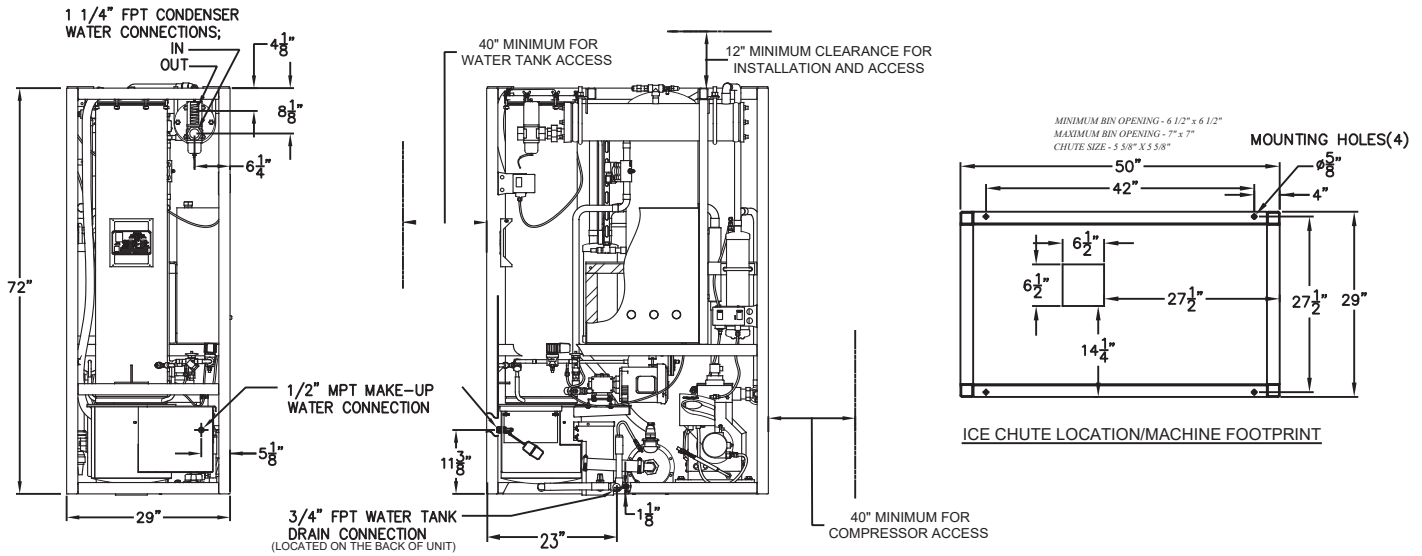
(800) 853-8648, (502) 635-3000

info@vogtice.com

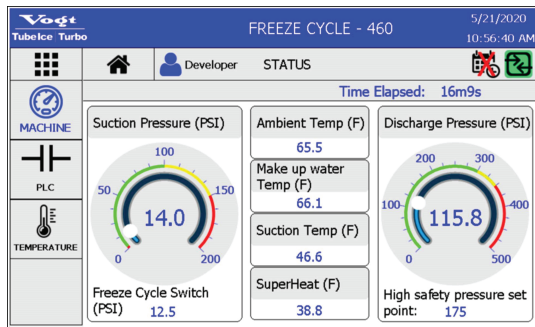


www.vogtice.com





Vogt HMI Display



New Control Features and Benefits

- ★ Allen-Bradley PLC and sensors replace FPS, High/Low safety switches, thaw timer, DPS, etc.
- ★ Secure remote connectivity* with 5 user levels for extra security.
- ★ Instant email notifications* of machine faults sent to key users limiting down time.
- ★ HMI displays tips for machine faults for quick and easy troubleshooting.
- ★ Detailed history and trends enable early detection of potential issues.
- ★ Built-in maintenance log for a better asset management.

*Requires connection to Internet (ethernet connection)

Ice Machine Electrical Information

Voltage	Air Cooled			Water Cooled		
	F.L.A.	Min. Ampacity	Max. Fuse Size (Amps)	F.L.A.	Min. Ampacity	Max. Fuse Size (Amps)
208/230V, 3ph, 60hz	54.4	64.7	110	48.4	58.7	100
460V, 3ph, 60hz	26.4	31.4	55	23.7	28.7	50
200V, 3ph, 50hz	57.5	68.4	115	51.5	62.4	110
400V, 3ph, 50hz	27.2	32.2	55	24.2	30.4	55

Motor Information

Water Pump	Cutter Motor	Condenser Fan Motor(s) H.P.	Compressor
1 1/2	1/2	(qty 2) @ 1 1/2	6 1/2
			7 1/2

Machine Weights

	Ice Machine		Condenser	
	Lbs	Kg	Lbs	Kg
Shipping Weight	2000	907	760	345
Operating Weight	2030	921	580	263

Line Size Connections

Ice Making Water	1/2" MPT
Drain Connections	3/4"
Condenser Water Lines	In
	Out

Refrigerant Line Sizes from ice machine to condenser	See service manual or air-cooled condenser installation instruction packet.
--	---

Operating Conditions

The ice machine shall not be subjected to an atmospheric temperature lower than 50 °F. (10 °C.) nor higher than 90 °F. (32 °C.) without effect on performance. Water for condensing or ice making purposes shall be non-corrosive.

The water shall be at a constant pressure no less than 30lbs. at the ice machine location. The condition of the water to make satisfactory ice shall be the responsibility of the purchaser.