

# ViewBoard® 55" 4K Interactive Display



**IFP5550-2EP**



- UFT (Ultra Fine Touch) Technology
- myViewBoard™ digital whiteboard software
- ViewBoard® Cast 4-way split screen content sharing software
- SmartPort™ shared front USB ports for internal & external PCs
- 2.1 Stereo sound with built-in subwoofer

The ViewBoard® IFP50-2EP series embraces UFT (Ultra Fine Touch) Technology to offer more precise writing and faster processing time than traditional IR panels. Smooth, dual-pen writing with our new, slim 3mm pens enables groups of teachers and students to work efficiently on any detailed tasks that require the use of accurate, fine-tipped pens. The ViewBoard® IFP50-2EP series is designed with a slim bezel to broaden your viewing experience so that even at the edge of the panel you can write clearly and confidently. Integrated myViewBoard™ digital whiteboard software allows users to collaborate on the go, while ViewBoard® Cast provides 4-way, split-screen content sharing.

## Ultra Fine Touch Technology

It provides fine precision writing with a 3mm diameter pen tip.



3mm  
diameter pen

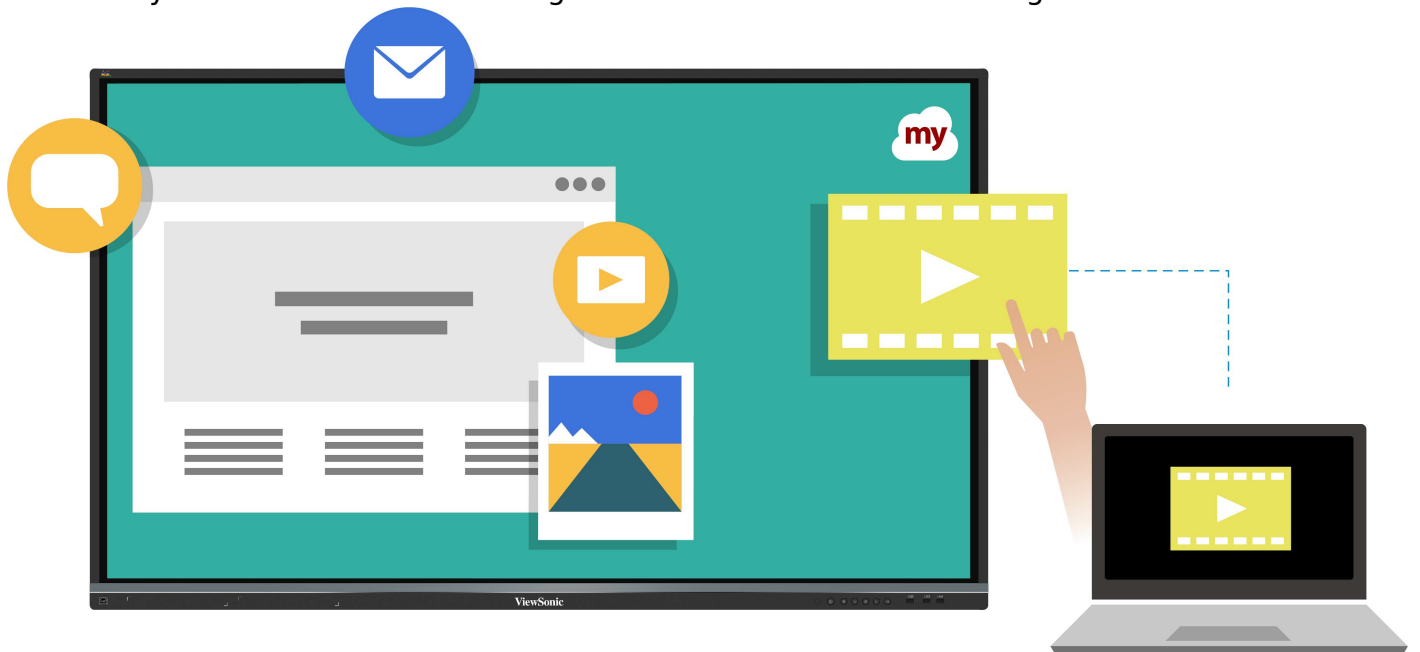
## Dual-Pen

Automatically detect pen diameter (8mm & 3mm) and write simultaneously with different colours and thicknesses.



## Full Native Performance on Android

Built-in myViewBoard® whiteboarding software to collaborate on the go.



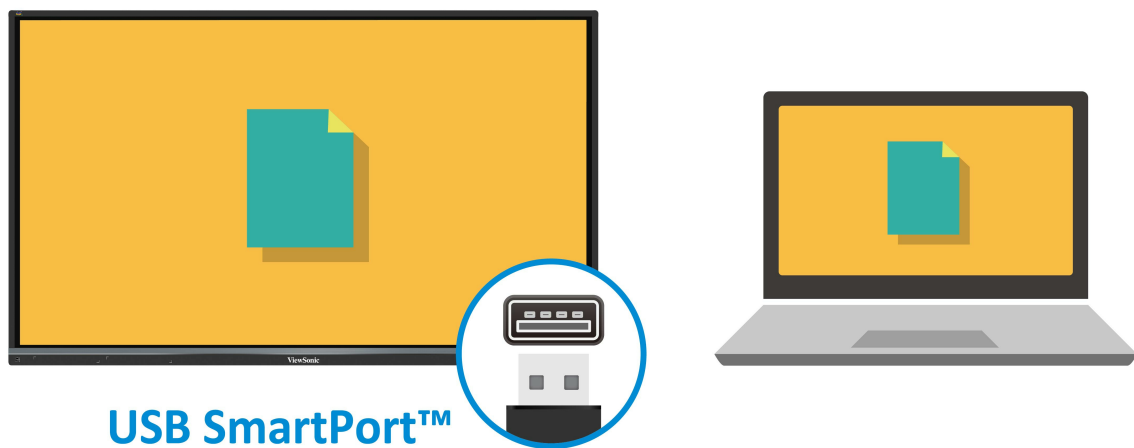
## 4-way Split Screen

4-way split screen content sharing with built-in ViewBoard® Cast software.



## Shared USB Ports

SmartPort™ shared front USB ports for internal & external PCs.



## Stereo Sound

2.1 Stereo sound with a built-in subwoofer.



## Faster Internet

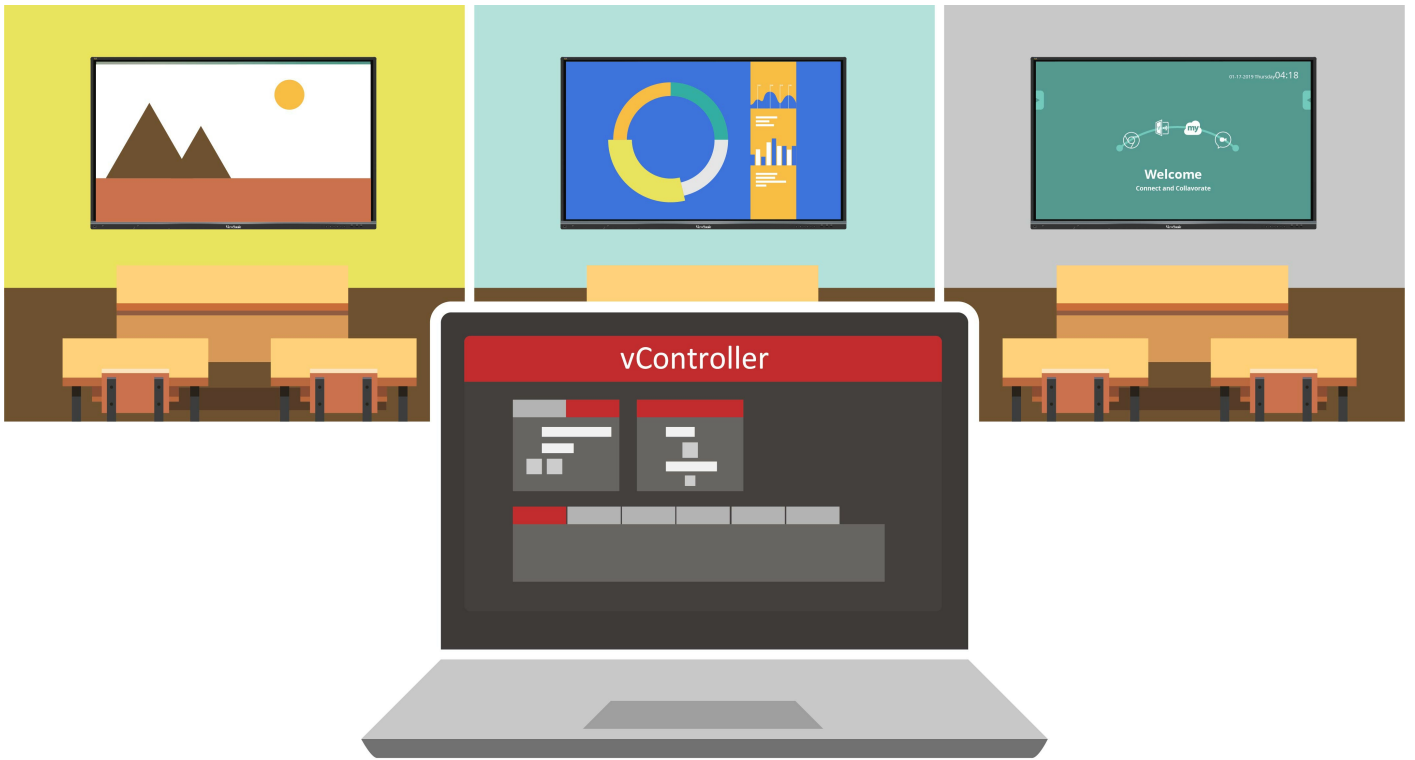
LAN sharing with slot-in PC provides a faster, more powerful internet connection.

## LAN Share



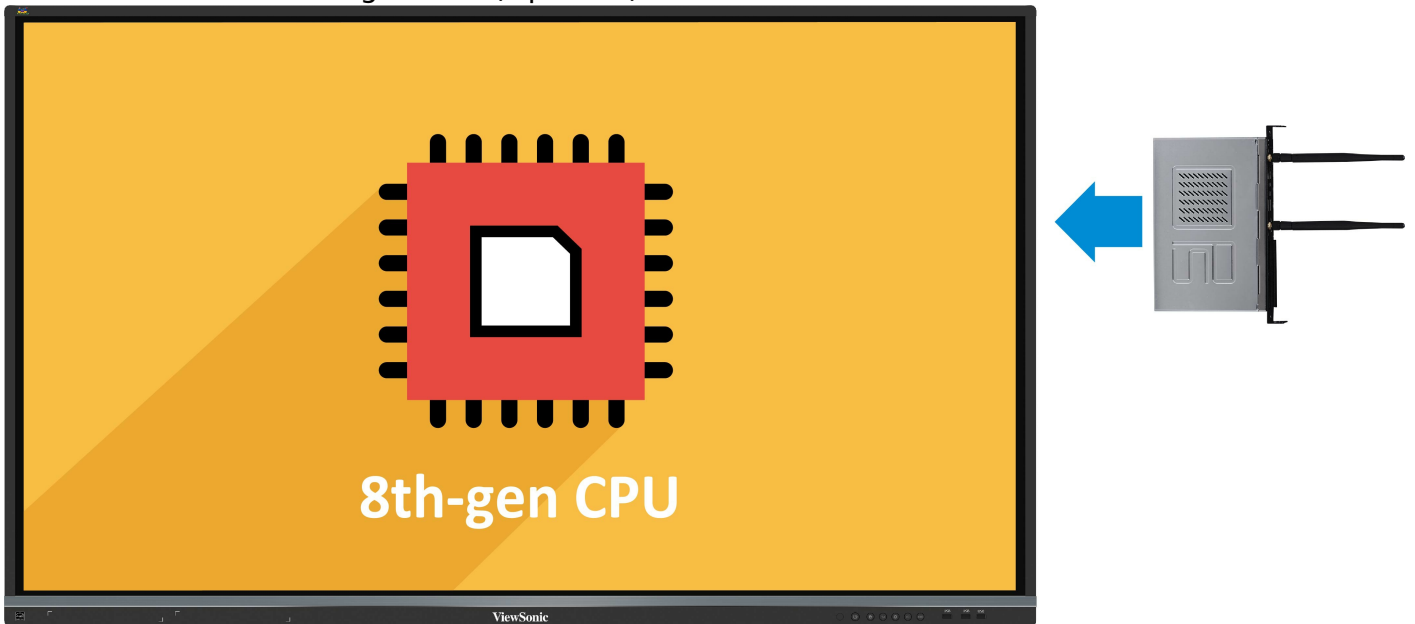
## Remote Control

Built-in RS232 port and vController software for remote control.



## Slot-in PC

Slot-in PC with Intel 8th-gen CPU (Optional).

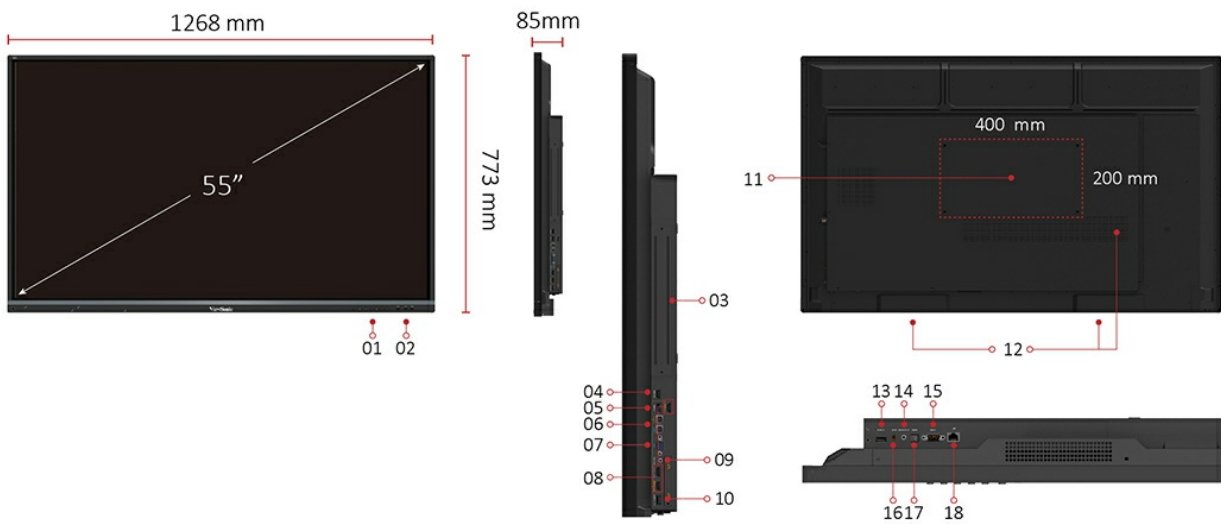


## Web Camera

Top-mounted 1080p web camera (Optional).



## I/O Ports



1. MENU CONTROLS
2. USB X 3
3. EMBEDDED PC SLOT
4. HDMI OUT
5. USB 3.0
6. TOUCH X 2
7. VGA
8. HDMI IN X 2
9. AUDIO IN
10. CAMERA PORT
11. VESA® WALL Mount 400x200 mm

12. INTERNAL SPEAKERS
13. USB 2.0
14. AUDIO OUT
15. RS232
16. AV IN
17. SPDIF
18. LAN

## Technical Specifications

---

Display	Panel Size	55"
	Type/Tech	TFT LCD Module with DLED Backlight.
	Display Area (mm)	1209.6(H) x 680.4 (V) (54.64" diagonal)
	Aspect Ratio	16:9
	Native Resolution	UHD 3840x2160(Pixels)
	Colours	1.07B colours (10bit)
	Brightness	350 nits (typ.) 300 nits (min.)
	Contrast Ratio	5000:1 (DCR)
	Response Time	8ms
	Viewing Angles	H = 178, V = 178 typ.
	Backlight Life	30,000 Hours (Min)
	Surface Treatment	Anti-Glare
	Bezel	Slim
	Orientation	Landscape
Platform	Processor	ARM Cortex A73 dual-core 1.2GHz
	RAM	2GB DDR4
	Storage	16GB
Touch	Type/ Tech	IR Recognition
	Touch Resolution	32767 x 32767
	Touch Point	20 points touch, 10 points writing
INPUT	HDMI	2.0 x3 (3840x2160 @60Hz)
	RGB / VGA	x1
	Audio	x1 (PC audio in)
	CVBS	x1
	RS232	x1
	OPS	x1 PC Slot (proprietary)
	OUTPUT	HDMI
Audio		x1 (Earphone out)
SPDIF		1(optical)
RS232		x1
LAN	RJ45	x1
USB	Type A	USB 2.0 x4 (including 2 USB port in front) USB 3.0 x2 (including 1 USB port in front)
	Type B	x2, for touch
SPEAKERS	SPEAKERS	10W x 2 + 15W x 1
Top Camera Plate		Yes
COMPATIBILITY	RGB PC/HDMI PC	Refer to timing table
	CVBS	480i
	HDMI	3840x2160



Embedded OS	Embedded OS	Android 7
USB SUPPORTED FILE FORMAT	USB SUPPORTED FILE FORMAT	Picture - BMP, JPEG, PNG
		Video - Codec: MPEG1, MPEG2, MPEG2-PS, MPEG4, MKV Container: MPG, MP4, MOV, VOB, DAT, MKV
		Audio - Codec: AAC, HEAAC, MPEG1, MPEG2 Container: AAC, M4A, MP3
Bundle Software	Basic Annotation Software Pro Annotation Software	myViewBoard / vBoard Lite myViewBoard for Windows (Embedded in Windows Slot-in PC)
	Wireless Presentation with Touch Feedback: Viewboard Cast ViewSonic Launcher	yes Embedded
Special Features	All-in-one USB port (combine Windows/Android USB port; no need to distinguish them anymore) Simple LAN sharing between IFP and slot-in device	Front "SmartPort™ USB" to all channels. 10M/100M for Android 10M/100M/1000M for slot-in PC
Power	Voltage Consumption	100-240VAC +/- 10% Wide Range 81W (Typ.) < 0.5 W ("Off")
ERGONOMICS	Wall Mount (VESA® )	400 x 200
OPERATING CONDITIONS	Temperature (° C) Humidity	0°C to 40°C 10% ~ 90% RH non-condensing
DIMENSIONS (W x H x D)	Physical (inch / mm) Packaging (inch / mm)	49.9 x 30.4 x 3.3 in / 1268 x 773 x 85 mm 56.2 x 34.6 x 8.7 in / 1428 x 878 x 220 mm
WEIGHT	Net (lb / kg) Gross (lb / kg)	68.34 lb / 31 Kg 85.98 lb / 39 Kg
REGULATIONS	REGULATIONS	FCC, cTUVus, CB, CE, BSMI, RCM, EAC
Energy Star version	Energy Star version	ES8.0
EEL rating	EEL rating	A+
PACKAGE CONTENTS	PACKAGE CONTENTS	1. Power cable (3 metres) x 4 2. Remote control 3. USB cable (3 metres) 4. AV cable 5. Touching pen x 2 6. Quick Start Guide 7. RS232 adapter 8. Clamp x 5 9. Plate 10. Screw x 8 11. HDMI cable (3 metres)
Compatible Slot-in PC	Compatible Slot-in PC	VPC14-WP series VPC10-WP series VPC15-WP series VPC16-WP series VPC17-WP series
UPC Code	UPC Code	76690793881 4

## **ViewSonic® Limited Warranty**

---

ViewSonic provides customers with the security of a manufacturers warranty against defected products. The type and duration of the applicable warranty service varies by product type, country of purchase and can also vary on an individual basis according to customer requirements agreed at time of purchase. The warranty will expire after the end of the warranty period.

---

For more product information, visit us at **[www.viewsoniceurope.com](http://www.viewsoniceurope.com)**

All rights reserved by ViewSonic Corporation. All other Corporate names and trademarks are the property of their respective companies. E&EO. All prices and specifications are subject to change without written notice. Images are for illustrative purpose only. Terms & Conditions Apply.