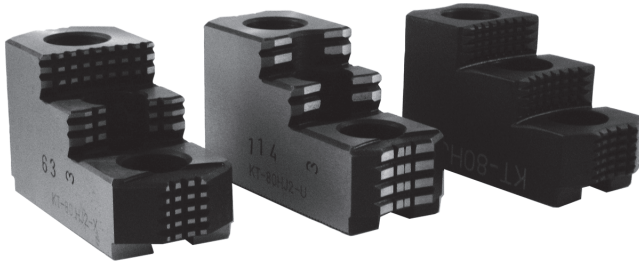


HARD JAWS-1.5mm X 60° Serrations

1.5mm x 60° Serration Hard Jaws

For Kitagawa®, Samchully® Strong®, MMK & Howa Chucks



FEATURES:

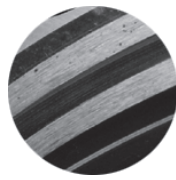
- Designed for first operation roughing, expect standard runout between **0.005-0.010**
- Reversible-suitable for OD & ID workholding.
- **GRIP-RITE/OEM Style** hard jaws have ground tips and provide better runout.
- **XTRA BITE** -very aggressive bite. They have conical teeth for extra gripping power and ground body to provide improved runout.
- **SHARK JAWS** have conical teeth for extra gripping power and black oxide for long life. Ideal for castings! Made in the USA.
- 1 & 2 step jaws available.

Need Help Finding The Correct Chuck Jaws? See Our "Easy Jaw Finder" On Pages 622-634

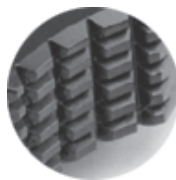
We offer one of the largest selections of Hard Jaws in the USA. For your convenience, we offer 3 unique styles of hard jaws. Choose the best fit for your application!



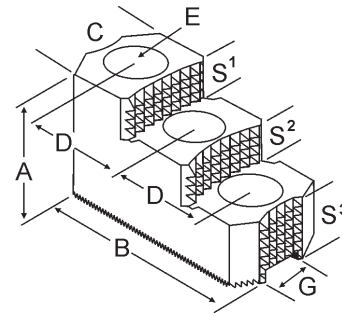
XTRA BITE (-X)
Very aggressive grip, ground body and sides for improved runout.



GRIP-RITE (-U)/OEM STYLE
with ground tips and sides for improved runout.



SHARK JAW
Conical teeth for gripping, black oxide for long life. Ideal for castings and scaly material. Made in the USA.



Critical Dimensions

Group Number	Chuck Size	Groove Width G	Screw Size E	Hole Space D	Width Inch C	OAL Inch B	Height Inch A	No. of Holes	No. of Steps	Top Step Ht S1	Mid Step Ht S2	Bot Step Ht S3	Part Number	Price Per Set	Style	Code
K1-11-25	6	0.433 (11mm)	8mm	0.985 (25mm)	1.250	3.000	1.969	3	2	0.500	0.500	0.969	SG-60HJ2-X	\$329.35	XTRA-BITE	E
K1-12-20	6	0.472 (12mm)	10mm	0.787 (20mm)	1.220	2.900	2.000	3	1	0.500	-	1.000	KT-60HJ1	\$391.11	Shark Jaws	D
Kitagawa BB-06,B-06, B-206, BT-06					1.220	2.646	1.423	3	1	0.359	-	1.064	KT-60HJ1-U	\$292.30	OEM Style	E
					1.220	2.900	2.000	3	2	0.500	0.500	1.000	KT-60HJ2	\$391.11	Shark Jaws	D
					1.220	2.728	1.740	3	2	0.402	0.402	0.936	KT-60HJ2-U	\$262.95	OEM Style	E
					1.250	3.000	1.969	3	2	0.500	0.500	0.969	KT-60HJ2-X	\$274.51	XTRA-BITE	E
K1-14-25	8	0.551 (14mm)	12mm	0.984 (25mm)	1.500	3.300	2.000	3	1	0.500	-	1.000	KT-80HJ1	\$462.73	Shark Jaws	D
8" Kitagawa B-08,B-208, MMK ZA6-8, HA6-8					1.382	3.402	1.669	3	1	0.591	-	1.078	KT-80HJ1-U	\$345.81	OEM Style	E
					1.500	3.300	2.000	3	2	0.500	0.500	1.000	KT-80HJ2	\$462.73	Shark Jaws	D
					1.382	3.409	2.000	3	2	0.465	0.465	1.070	KT-80HJ2-U	\$315.15	OEM Style	E
					1.500	3.500	1.969	3	2	0.530	0.530	0.909	KT-80HJ2-X	\$334.60	XTRA-BITE	E
K1-16-25	8	0.630 (16mm)	12mm	0.984 (25mm)	1.500	3.300	2.000	3	2	0.500	0.500	1.000	HO-80HJ2	\$483.49	Shark Jaws	D
K1-16-30	10	0.630 (16mm)	12mm	1.181 (30mm)	1.750	4.000	2.000	3	1	0.750	-	1.250	KT-100HJ1	\$550.88	Shark Jaws	D
B-10, B-210, BT-10/210					1.579	3.980	1.737	3	1	0.635	-	1.102	KT-100HJ1-U	\$411.68	OEM Style	E
HA6/8-10, ZA6-10, ZA8-10					1.750	4.250	2.469	3	1	1.250	-	1.219	KT-100HJ1-X	\$433.35	XTRA-BITE	E
					1.750	4.000	2.500	3	2	0.650	0.500	1.350	KT-100HJ2	\$550.88	Shark Jaws	D
					1.579	3.980	2.130	3	2	0.520	0.520	1.090	KT-100HJ2-U	\$360.16	OEM Style	E
					1.750	4.250	2.469	3	2	0.650	0.650	1.169	KT-100HJ2-X	\$396.37	XTRA-BITE	E
K1-16-32	10	0.630 (16mm)	12mm	1.266 (32mm)	1.500	4.125	2.000	3	2	0.650	0.500	1.350	MT-100HJ2	\$535.30	Shark Jaws	D
K1-18-30	12	0.709 (18mm)	14mm	1.181 (30mm)	1.750	4.600	2.000	3	1	0.750	-	1.250	KT-120HJ1	\$594.93	Shark Jaws	D
B-12, BT-12, HA8-12, MMK-12, ZA8-12					1.969	4.091	2.051	3	1	0.669	-	1.382	KT-120HJ1-U	\$444.62	OEM Style	E
					2.000	4.875	2.469	3	1	1.300	-	1.168	KT-120HJ1-X	\$468.02	XTRA-BITE	E
					1.750	4.600	2.500	3	2	0.650	0.500	1.350	KT-120HJ2	\$594.93	Shark Jaws	D
					2.000	4.042	2.480	3	2	0.543	0.442	1.495	KT-120HJ2-U	\$419.43	OEM Style	E
					2.000	4.875	2.469	3	2	0.650	0.650	1.169	KT-120HJ2-X	\$444.50	XTRA-BITE	E
					1.750	4.600	2.500	3	2	0.650	0.500	1.350	KT-128HJ2	\$594.93	Shark Jaws	D
K1-21-30	12	0.827 (21mm)	16mm	1.181 (30mm)	2.000	4.042	2.480	3	2	0.543	0.442	1.495	KT-128HJ2-U	\$418.28	OEM Style	E
B-212, BT-212					2.000	4.875	2.469	3	2	0.650	0.650	1.169	KT-128HJ2-X	\$445.43	XTRA-BITE	E
					2.500	5.400	3.000	3	2	0.730	0.730	1.540	KT-150HJ2	\$771.20	Shark Jaws	D
K1-22-43	15 & 18	0.866 (22mm)	20mm	1.693 (43mm)	2.448	5.850	3.385	3	2	0.827	0.827	1.731	KT-150HJ2-U	\$540.24	OEM Style	E
B-15, B-18, BT-15					2.500	5.500	3.500	3	2	0.950	0.950	1.600	KT-150HJ2-X	\$593.69	XTRA-BITE	E
					2.500	5.400	3.000	3	2	0.730	0.730	1.540	KT-151HJ2	\$771.20	Shark Jaws	D
K1-26-43	15 & 18	1.005 (25.5mm)	20mm	1.693 (43mm)	2.448	5.850	3.385	3	2	0.827	0.827	1.731	KT-151HJ2-U	\$576.36	OEM Style	E
B-215, N18, N15					2.500	5.500	3.500	3	2	0.950	0.950	1.600	KT-151HJ2-X	\$593.69	XTRA-BITE	E
					2.500	5.500	3.500	3	2	0.950	0.950	1.600	KT-151HJ2-X	\$593.69	XTRA-BITE	E

Call Us Or Visit Our Website For Our Complete Selection!