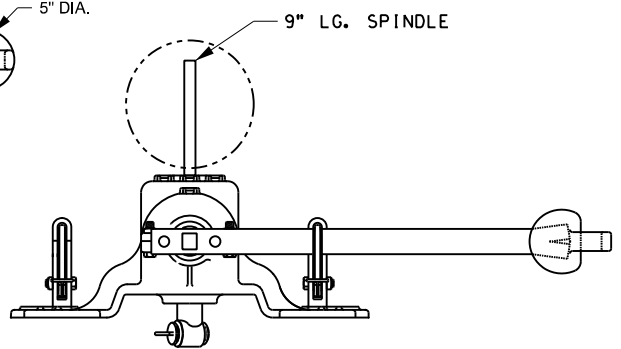
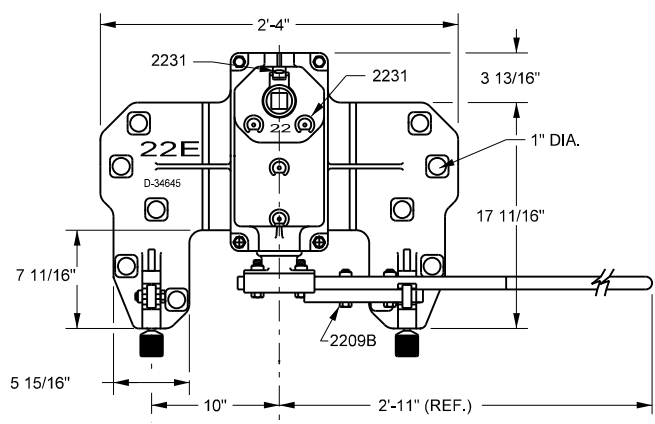


**OPTIONAL 36" STRAIGHT HANDLE
(USE FOR TIGHT CLEARANCE ONLY)**

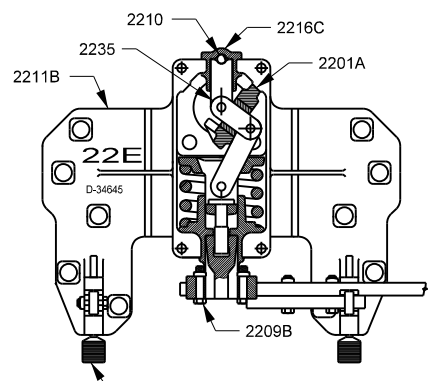
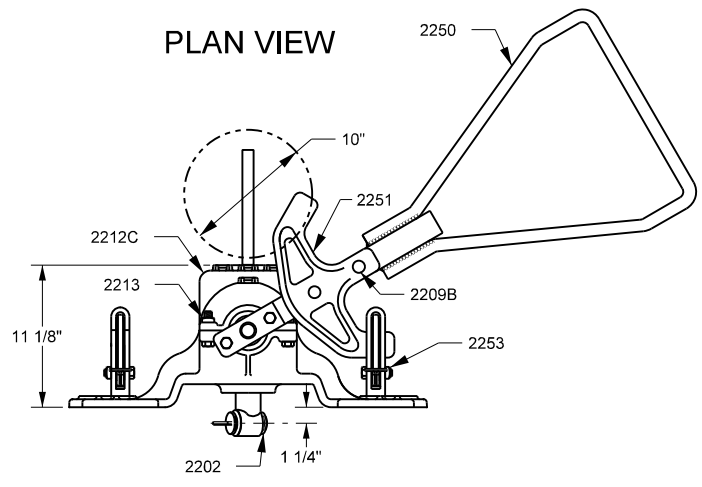
ITEM NO. 557-6957



**STAND WITH OPTIONAL
36" STRAIGHT HANDLE**



PLAN VIEW



**PLAN VIEW
WITH COVER REMOVED**

NOTES:
RECOMMENDED USE: OTHER THAN MAIN TRACK.

IT IS RECOMMENDED THAT SWITCH STANDS BE INSPECTED AND LUBRICATED AT LEAST ONCE A YEAR IN BUSY LOCATIONS OR ADD OIL IN "OIL CUPS" WITH ANY GOOD GRADE ENGINE OIL. RECOMMEND OIL WITH GRAPHITE CONTENT (SUMMER-SAE 60, WINTER-SAE 40).

IF SWITCH STAND IS DISASSEMBLED, REGREASING OF ALL INTERNAL PARTS IS REQUIRED. APPLY GREASE LIBERALLY IN "THRUST BUSHING" CAVITY, BOTH ENDS "SPRING BASE", "SPINDLE" SLOT, AND ALL BEARING SURFACES (TEXACO NO.904 GREASE).

STAND TO BE SECURED TO HEADBLOCK TIES UTILIZING 15/16" X 7" COACH SCREWS OR STANDARD CUT SPIKES.

FOR COACH SCREWS, SEE STD DWG 0450
FOR SWITCH TARGET DETAILS, SEE STD DWG 2020
FOR TRACK IDENTIFICATION, SEE STD DWG 2205
FOR CONNECTING ROD ASSEMBLY, SEE STD DWG 2175
FOR SWITCH PADLOCK, SEE STD 2050

| QTY | CATALOG # | DRAWING # | DESCRIPTION |
|-----|-----------|-----------|---|
| 1 | 2235 | 22-5103 | LINKAGE AND SPRING CAGE ASSY. (SEE ASSY DWG FOR PARTS DWGS) |
| 1 | 2216C | 22-6201 | THRUST BUSHING |
| 1 | 2210 | 289.01.01 | THRUST BALL 1" DIA. |
| 1 | 2212C | 22-6100 | COVER (S-604-C) |
| 1 | 2252 | 22E-6000 | BASE (D-34645) |
| 1 | 2201A | | SPINDLE (GL-2762) (DRILLED PER CUST.) |
| 1 | 2202 | SSC-100 | CRANK EYE (GL-1889) |
| 1 | 2250 | 92-7506 | TRI-HANDLE LEVER |
| 4 | 2213 | 201.12.06 | SQ. HD. BOLT 5/8" X 3" LONG |
| 4 | | 202.15.07 | HEX NUT 5/8"-11 |
| 4 | | 203.15.03 | LOCK WASHER 5/8" |
| 4 | 2209B | 201.12.07 | SQ. HD. BOLT 3/4" X 2 3/4" LONG |
| 4 | | 202.15.07 | SECURITY NUT 3/4"-10 |
| 5 | 2231 | 251.01.01 | 1608B GREASE FITTING - DRIVE TYPE |
| 1 | 2207 | | TARGET (PER CUSTOMER) |
| 1 | | | TARGET MAST (PER CUSTOMER) |
| 2 | 2208A | | BOLT |
| 2 | | | NUT |
| 1 | 2251 | PD-9461 | YOKE (D-34637) |
| 2 | 2253 | | 1/2" X 2 1/4" HEX CAP SCREW |
| 2 | | | HEX SECURITY NUT |
| 2 | 2254 | S-618A | FOOT LATCH |

ITEM NO.
557-6956



APPROVED: *Charles A. Conwell*
VP ENGINEERING
ADOPTED: DEC. 30, 1996
REVISED: SEP. 4, 2012
FILE NO.: 2216C

STD DWG
2116C

**UNION PACIFIC RAILROAD
ENGINEERING STANDARDS**

**NO. 22-E
SWITCH STAND**