

CHARACTERISTICS

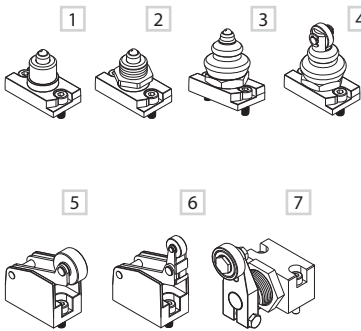
Ambient temperature	-10 ÷ +45 °C	
Fluid	50 µm filtered air, with or without lubrication	
Commutation system	spool	
Pressure Max	10 bar	
Connections	G/18	G1/4
Nominal bore (mm)	6,5	8,5
Nominal flow rate (NI/min)	890	1480
Valve body	die-cast zamak (G1/8), aluminium (G1/4)	
Seals	nitrile rubber	
Spool	aluminium	
Electropilot/Coil	AA series/U1-U3	
Power consumption	3,5 W (DC) - 5 VA (AC)	
Connector	AM 5110	
Voltage	12 V DC - 24 V DC - 24 V AC - 110 V AC - 230 V AC	
Manual override	two-position screw	



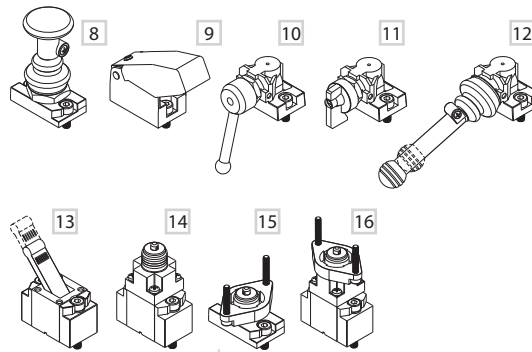
NOTE: some versions with high temperature seals are available upon request (for further information please refer to our Sales Office)

UNIVERSAL System modularity

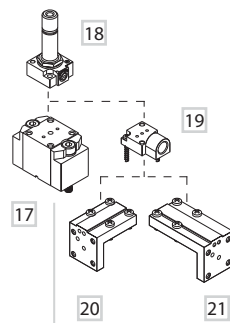
MECHANICAL



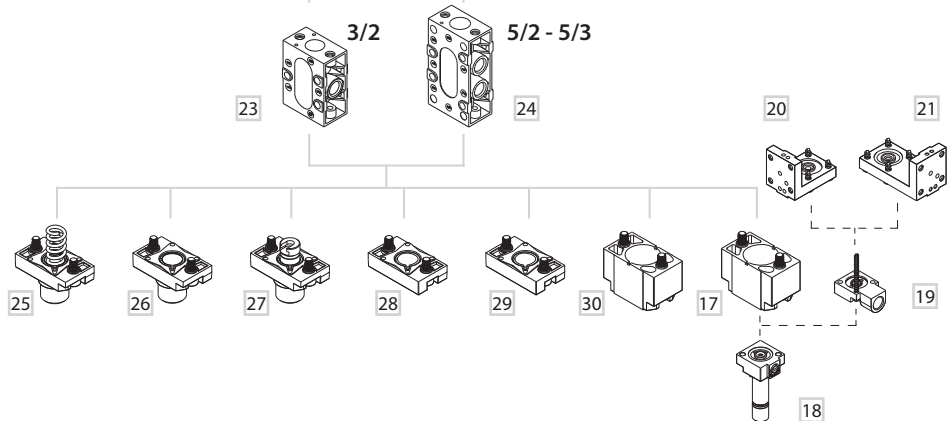
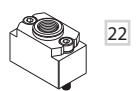
MANUAL



ELECTRICAL



PNEUMATIC



MECHANICAL CONTROL

- 1 Ball push
- 2 Ball push for screw panel mounting
- 3 Ball push with dust protection
- 4 Roller with dust protection
- 5 Roller lever
- 6 One-way roller lever
- 7 Two-way side roller lever

MANUAL CONTROL

- 8 Push-pull
- 9 Push button
- 10 Rotating lever
- 11 Selector

12 90° short/long lever

- 13 Short/long lever
- 14 Threaded indirect operation
- 15 Panel direct operation
- 16 Panel indirect operation

ELECTRICAL CONTROL

- 17 Electrical amplified
- 18 U1 electropilot
- 19 Plate for external pilot supply
- 20 Angle plate for "H" solenoid option
- 21 Angle plate for "P" solenoid option

PNEUMATIC CONTROL

- 22 Pneumatic amplified

BODY

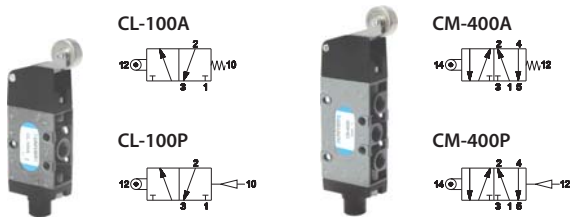
- 23 3/2 Body
- 24 5/2 Body

RETURN

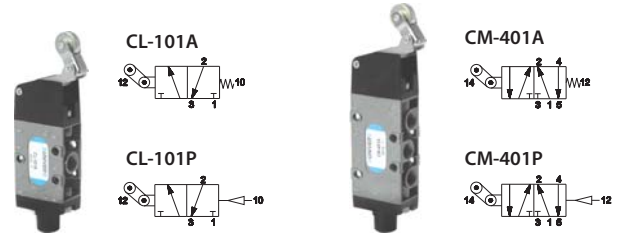
- 25 Mechanical spring
- 26 Pneumatic not amplified
- 27 Bottom plate - 2/3 positions
- 28 Bottom plate
- 29 Pneumatic spring
- 30 Pneumatic amplified

Valves G1/8 with direct mechanical operation

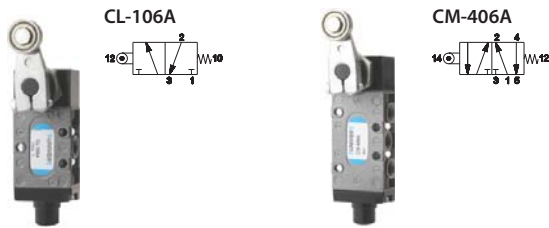
■ Roller lever



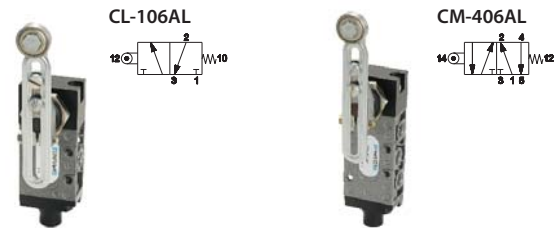
■ One-way roller lever



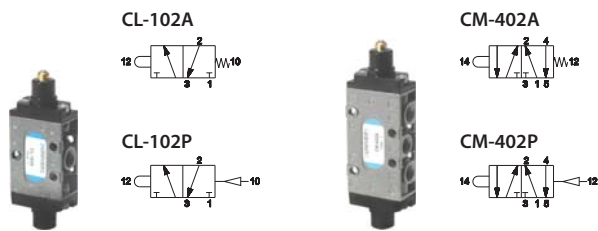
■ **NEW** - Two-way side roller lever



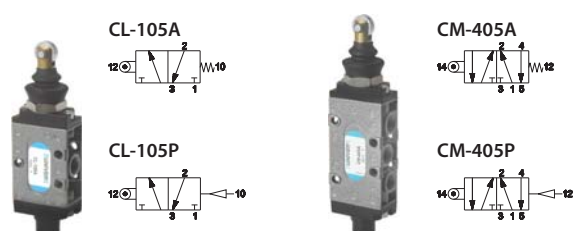
■ **NEW** - Adjustable two-way side roller lever



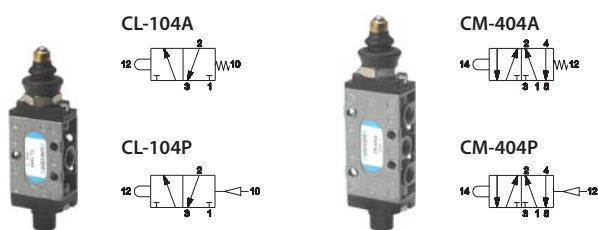
■ Ball-push



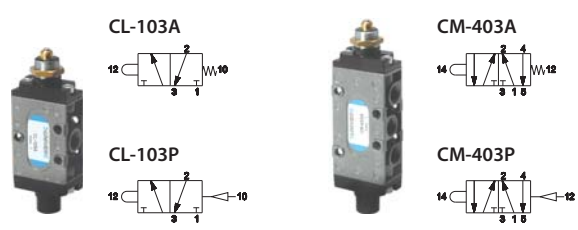
■ Roller with dust protection



■ Ball push with dust protection

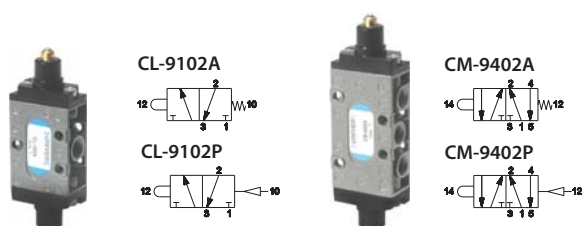


■ Ball push for screw panel mounting

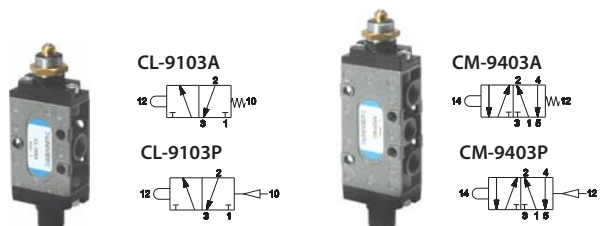


Valves G1/4 with direct mechanical operation

■ Ball push

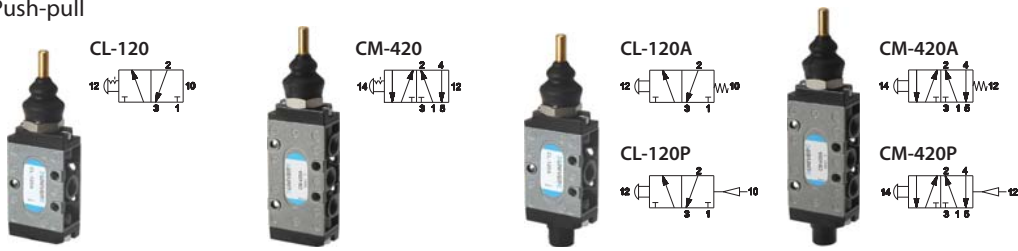


■ Ball push for screw panel mounting



Valves G1/8 with manual operation

■ Push-pull

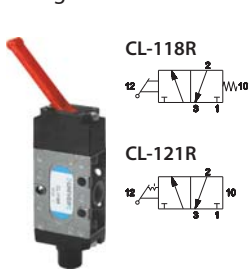


Valves are supplied without operator

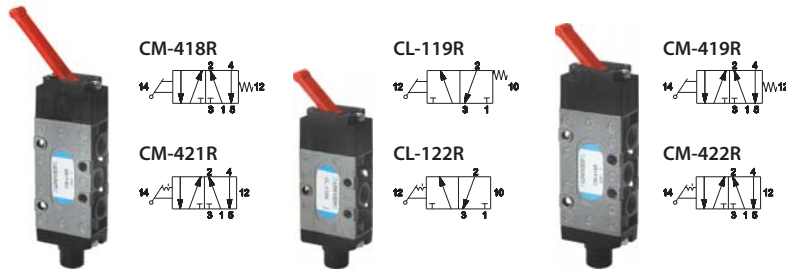


- YELLOW
CP-911G
- RED
CP-911R
- BLACK
CP-911N
- GREEN
CP-911V

■ Long lever



■ Short lever



LONG LEVER

STANDARD

- RED

UPON REQUEST

- YELLOW
- BLACK

SHORT LEVER

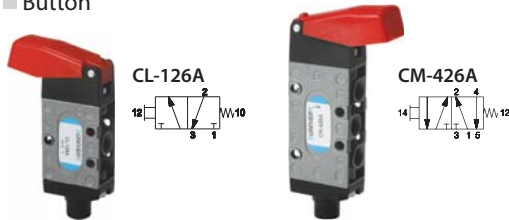
STANDARD

- RED

UPON REQUEST

- YELLOW
- BLACK
- GREEN

■ Button



STANDARD

- RED

■ Rotating lever



Valves are supplied without operator

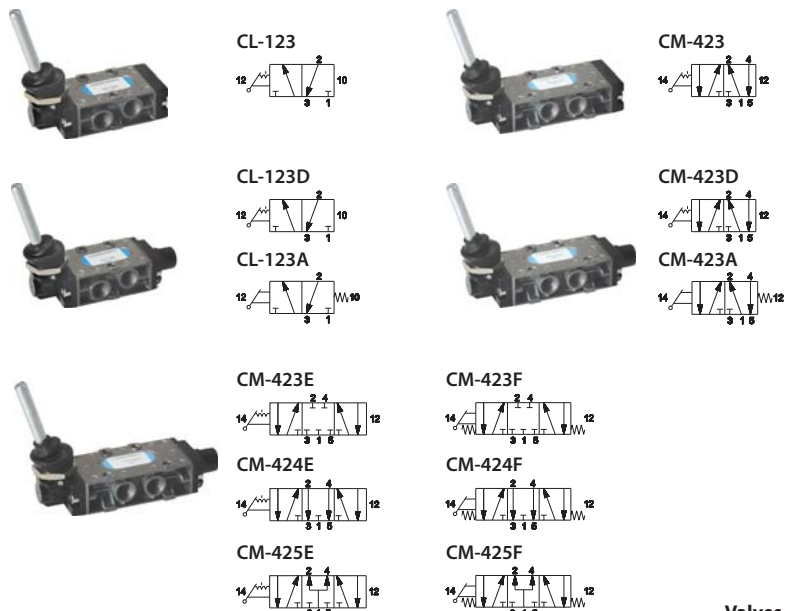


- RED
CP-915R



- RED
CP-916R

■ 90° Lever - 3 positions



Valves are supplied without operator

SHORT LEVER



- YELLOW
CP-912G
- RED
CP-912R
- BLACK
CP-912N

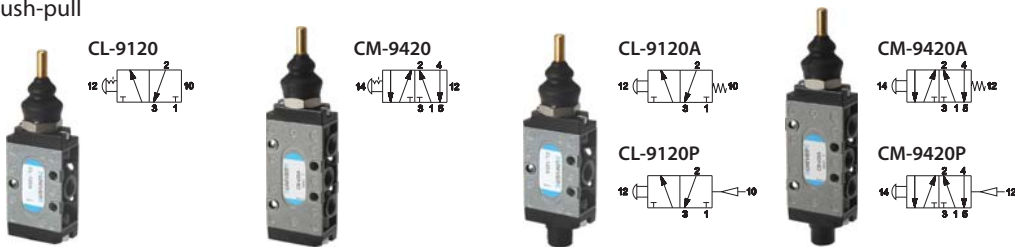
LONG LEVER



- RED
CP-913R

Valves G1/4 with manual operation

■ Push-pull

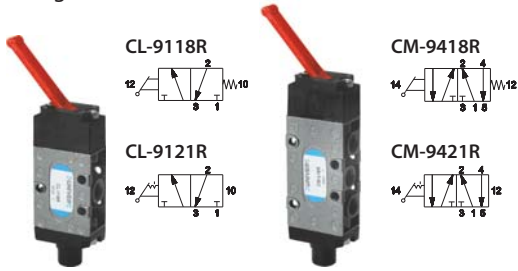


Valves are supplied without operator



- YELLOW
CP-911G
- RED
CP-911R
- BLACK
CP-911N
- GREEN
CP-911V

■ Long lever



STANDARD
■ RED

UPON REQUEST
■ YELLOW
■ BLACK

■ Rotating lever



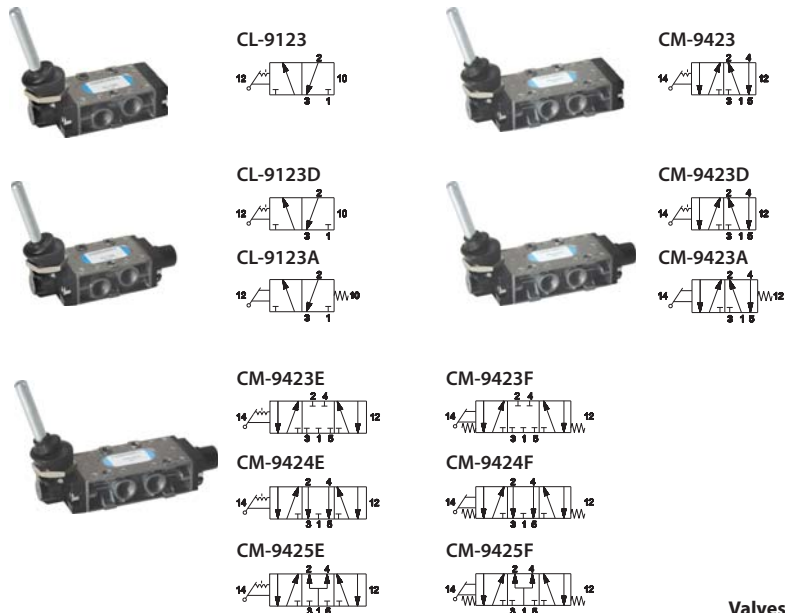
■ RED
CP-915R



■ RED
CP-916R

Valves are supplied without operator

■ 90° Lever - 3 positions



SHORT LEVER



■ YELLOW
CP-912G
■ RED
CP-912R
■ BLACK
CP-912N

LONG LEVER



■ RED
CP-913R

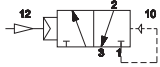
Valves are supplied without operator

Valves G1/8 - G1/4 with pneumatic operation

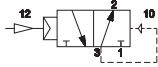
■ Single impulse



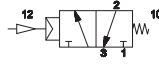
CL-200 G1/8
CL-9200 G1/4



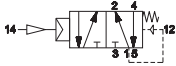
CL-203 G1/8
CL-9203 G1/4



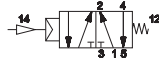
CL-200A G1/8
CL-9200A G1/4



CM-500 G1/8
CM-9500 G1/4



CM-500A G1/8
CM-9500A G1/4



■ Double impulse



CL-220 G1/8
CL-9220 G1/4



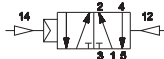
CL-221 G1/8
CL-9221 G1/4



CL-224 G1/8
CL-9224 G1/4



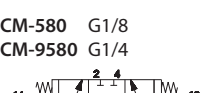
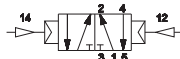
CM-521 G1/8
CM-9521 G1/4



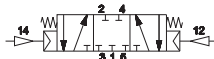
CM-524 G1/8
CM-9524 G1/4



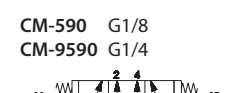
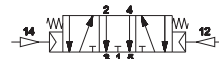
CM-520 G1/8
CM-9520 G1/4



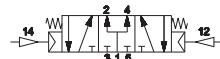
CM-580 G1/8
CM-9580 G1/4



CM-585 G1/8
CM-9585 G1/4



CM-590 G1/8
CM-9590 G1/4

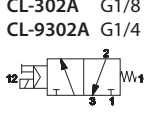


Valves G1/8 - G1/4 with electrical operation

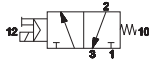
■ Single impulse



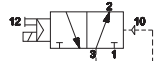
CL-300 G1/8
CL-9300 G1/4



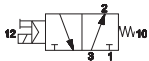
CL-302A G1/8
CL-9302A G1/4



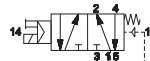
CL-301 G1/8
CL-9301 G1/4



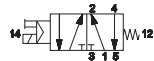
CL-303A G1/8
CL-9303A G1/4



CM-600 G1/8
CM-9600 G1/4



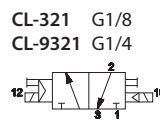
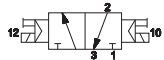
CM-602A G1/8
CM-9602A G1/4



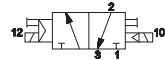
■ Double impulse



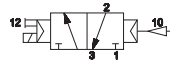
CL-320 G1/8
CL-9320 G1/4



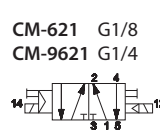
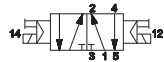
CL-321 G1/8
CL-9321 G1/4



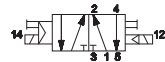
CL-322 G1/8
CL-9322 G1/4



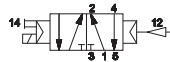
CM-620 G1/8
CM-9620 G1/4



CM-621 G1/8
CM-9621 G1/4



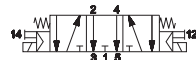
CM-622 G1/8
CM-9622 G1/4



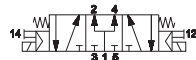
CM-680 G1/8
CM-9680 G1/4



CM-685 G1/8
CM-9685 G1/4



CM-690 G1/8
CM-9690 G1/4



Solenoid valves are supplied without coil / connector / locking nut

AM-5148

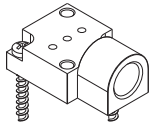
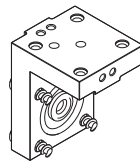


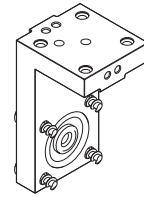
Plate for external pilot supply

AM-5151



Angle plate for "H" solenoid option

AM-5152



Angle plate for "P" solenoid option

CLIPS Modular sub-base G1/8 - G1/4 for 3/2 - 5/2 - 5/3 valves

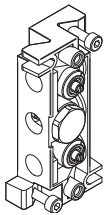


G1/8



G1/4

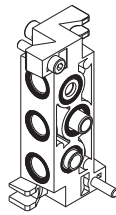
CP-100/CP-9100



modular sub-base with adjustable and conveyed exhausts
CP-100 for G1/8, **CP-9100** for G1/4
material: zamak

standard supplied: screws, seals, exhaust regulator and couplig for valve fixing

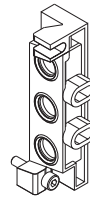
CP-101/CP-9101



modular sub-base without adjustable exhaust
CP-101 for G1/8, **CP-9101** for G1/4
material: zamak

standard supplied: screws, seals and copuling for valve fixing

CP-105/CP-9105



side connections inlet plate
connections: **CP-105** G1/4, **CP-9105** G3/8
material: zamak

standard supplied: screws and seals

CP-106



closing plate for unused place
material: aluminium

CP-110/CP-9110



coupling
connections: **CP-110** G1/8, **CP-9110** G1/4
material: brass

CP-111/CP-9111



pressure separator
CP-111 for G1/8, **CP-9111** for G1/4
material: aluminium

CP-112/CP-9112



plug for 3/2 valve mounting
CP-112 for G1/8, **CP-9112** for G1/4
material: aluminium

CP-113/CP-9113

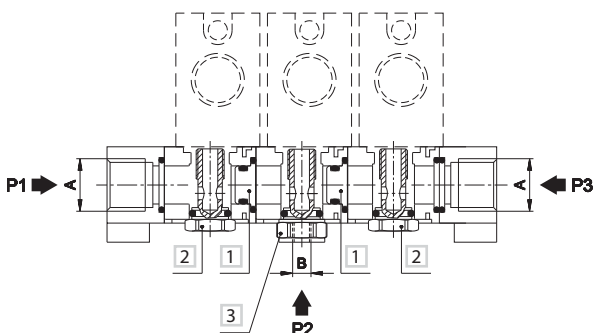


adjustment screw
CP-113 for G1/8, **CP-9113** for G1/4
material: brass

For each additional pressure, one coupling and two separators are required

Plug for mounting 3/2 NC-NO valves on "CLIPS" sub-base to close unused way.
Sub-base with adjustment screw (screwdriver slot) standard supplied.
Upon request: adjustment needle with milled handle

Manifold assembly example by 3 different pressures



	A	B
G1/8	G1/4	G1/8
G1/4	G3/8	G1/4

- 1 Pressure separator CP-111/CP-9111
- 2 Fixing coupling for valve embodied in the sub-base
- 3 Coupling CP-110/CP-9110