



Inspired Video Solutions

tyco
Security Products

Access Control, Video, Location-Based Tracking and Intrusion. UNIFIED.

CONTENTS

- illustra Standard IR Bullet Camera with Motorized Lens 1
- illustra Standard 2MP 30x PTZ Camera 3
- illustra Standard Laser IR PTZ Camera 7
- illustra Flex IP Mini-Domes 10
- illustra Flex IP Bullet Camera 12
- illustra Flex IP Box Camera (Gen 2) 14
- illustra 825 Fisheye Camera 16
- illustra PRO Mini-Domes 18
- illustra Edge 22
- illustra Standard IP Indoor Mini Dome Camera 25
- illustra Standard IP Outdoor Mini Dome Camera 27
- illustra Standard IP Bullet Camera 29
- exacqVision Start 31
- exacqVision Professional 33
- exacqVision Enterprise 35
- exacqVision Edge & Edge+ 37
- exacqVision Server and Hardware Cheatsheet 39
- VideoEdge NVR 42
- victor Unified Management Software 46
- Video Intelligence and Analytics 49



Standard IR Bullet Camera with Motorized Lens



Features That Make a Difference:

- 1/1.8" Progressive Scan CMOS
- Full HD1080p video
- Up to 30fps frame rate
- Ultra-low light
- Slow shutter
- 120dB WDR
- 3D DNR
- Up to 50m IR range
- Motorized lens with Smart Focus
- Support audio/alarm IO
- Support 128G on-board storage
- DC12V/PoE
- IP67

The Illustra Standard IR Bullet Camera by American Dynamics comes with a motorized lens and has several intelligent functions in-built for high-quality video surveillance. Additionally, this Full HD Camera Model ADCi350-B111 comes with a rich feature-set that includes 120dB WDR, PoE, Defog, and 3D DNR to meet a wide variety of Video Surveillance applications.

Superior IR Performance

An in-built IR covering up to 50 meter range provides high quality colored images in low light conditions. The intelligent IR prevents over-exposure at close distances while an IR anti-reflection panel increases infrared light transmittance for better performance in low light environments. The camera incorporates a motorized lens for zooming into an object for better investigation.

Built-in Intelligence

With a host of intelligent features and functions, the camera makes video surveillance easy for security professionals. The functions include Intelligent Detection and Intelligent Codec. Intelligent Detection includes comprehensive intelligence features such as Intrusion Detection, Line Crossing Detection, Scene Change Detection, Audio Exception Detection, Defocus Detection and Face Detection.

The Intelligent Recording function supports Edge Recording as well as Dual-VCA. The versatile Intelligent Codec function supports Low Bit rate, Low Latency, ROI Enhancement, Multi-stream, and Rotate Mode!

Camera Function

The resolution of the Camera is Full HD (1920 x 1080) @25/30fps. It supports H.264/MJPEG video compression, multi-level video quality configuration and Basic/Main Profile H.264 encoding complexity. The Camera supports Regional Cropping of the image

to save on bandwidth with details of the Region of Interest being clearly visible. Code Smoothness setting is supported for different requirements of image quality and fluency. In backlight situations, the camera supports 120 dB WDR, BLC and defog.

The intuitive and user friendliness of the Camera's configuration screen is achieved through implementation of "Multiple OSD Color: Black & White Self-adaptive" and Custom Font Color Setting option.

This IR Bullet Camera with motorized lens has standard in-built support to 128GB Micro SD/SDHC/SDXC card storage, 10M/100M Ethernet Port, Audio I/O, dual channel stereo audio, Alarm I/O and CVBS analog output (4CIF resolution). An "AFF" Automatic Fast Focus feature maintains focus during zooming.

ONVIF Support

The Camera supports the ONVIF (profile S) protocol, three streams and 20 channels live view at the same time, providing flexibility of Video Stream Recording, live view at different resolutions and bitrate configuration options.

Ideal for Outdoor Applications

Ingress Protection is at the IP67 level with anti-thunder, anti-surge, anti-static protection that makes this camera ideal for Outdoor Video Surveillance applications.

Authentication Support for Higher Security

Additionally, for greater security, the Camera supports three-level user authentication – management, user and password authorization, IP address filtering and anonymous access. Other vital security features include security certificates such as HTTPS, SSH, Support Creating Certificate and the Lock User IP feature for many times error login. Basic authentication is supportable in IE (web browser) configuration.



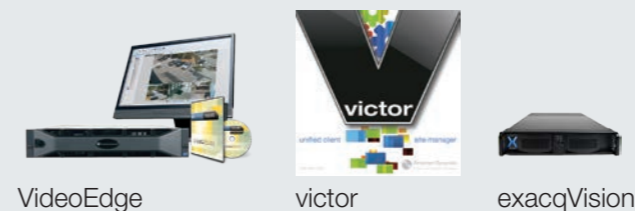
Specifications

ADCi350-B111		Picture Overlay	
Camera		LOGO picture can be overlaid on video with 128 x 128 24bit bmp format	
Image Sensor	1/1.8" Progressive Scan CMOS	Network	
Min. Illumination	0.002 Lux @ (F1.2, AGC ON), 0.0027 Lux @ (F1.4, AGC ON), 0 Lux with IR	Network Storage	NAS (Support NFS,SMB/CIFS), ANR
Shutter Speed	1/3s ~ 1/100,000s	Alarm Trigger	Motion detection, Tampering alarm, Network disconnect, IP address conflict, Storage exception
Slow Shutter	Support	Protocols	TCP/IP, UDP, ICMP, HTTP, HTTPS, FTP, DHCP, DNS, DDNS, RTP, RTSP, RTCP, PPPoE, NTP, UPnP, SMTP, SNMP, IGMP, 802.1X, QoS, IPv6, Bonjour
Lens	2.8-12mm @ F1.4, angle of view: 90.1°~31°	Security	User Authentication, Watermark, IP address filtering, Anonymous access
Lens Mount	AF -automatic focusing and motorized zoom lens	Standard	ONVIF(PROFILE S)
Auto-iris	DC drive	Interface	
Day & Night	IR Cut Filter	Audio (-S)	1-ch 3.5 mm audio in (Mic in/Line in)/out interface
WDR	120dB	Communication Interface	1 RJ45 10M/100M Ethernet port
Compression Standard		Alarm (-S)	1 input, 1 output (up to DC24V 1A or AC110V 500mA)
Video Compression	H.264/MJPEG	Video Output (-S)	1Vp-p composite output (75 Ω/BNC)
H.264 Type	Baseline Profile / Main Profile	On-board Storage	Built-in Micro SD/SDHC/SDXC slot, up to 128 GB
Video Bit Rate	32 Kbps ~ 8 Mbps	Reset Button	Yes
Audio Compression	G.711/G.722.1/G.726/MP2L2	Intelligent Feature-set	
Audio Bit Rate	64Kbps(G.711) / 16Kbps(G.722.1) / 16Kbps(G.726) / 32-128Kbps(MP2L2)	Behavior Analysis	Line crossing detection, Intrusion detection
Image		Line Crossing Detection	Cross a pre-defined virtual line
Max. Resolution	1920 x 1080	Intrusion Detection	Enter and loiter in a pre-defined virtual region
Frame Rate	50Hz: 25fps(1920 x 1080, 1280 x 960, 1280 x 720), 60Hz: 30fps (1920 x 1080, 1280 x 960, 1280 x 720)	Exception Detections	Scene change detection, Audio exception detection, Defocus detection
Third Stream	Independent with Main Stream and Sub Stream, up to 50Hz: 1fps(1920 x 1080); 60Hz: 1fps (1920 x 1080)	Recognition	Face detection recognition
Image Enhancement	BLC/3D DNR/ROI	General	
Image Setting	Rotate Mode, Saturation, Brightness, Contrast, Sharpness adjustable by client software or web browser	Protection Level	IP67
Day/Night Switch	Auto/Schedule/Triggered by Alarm In	Operating Conditions	-30°C ~ 60°C (-22°F ~ 140°F), Humidity 95% or less (non-condensing)
		Power Supply	12 V DC ± 10%, PoE (802.3at)
		IR Distance	Up to 50m
		Power Consumption	Max. 12W
		Dimensions	100x103.9x311.8 mm (3.94" x 4.09" x 12.28")
		Weight	2000 g (4.41 lbs)

Ordering Information

SKU No.	Illustra Model	Description
ISL02B1BNWTT	ADCi350-B111	2MP IR Bullet with 2.8-12mm varifocal motorized zoom lens

Related Products



Approvals



Standard 2MP 30x PTZ Camera



Features That Make a Difference:

- Smart functions: support smart tracking, detection, recording, image processing and codec
- 540°/s pan preset speed and 400°/s tilt preset speed
- 0.1°-300°/s manual pan speed and 0.1°-240°/s manual tilt speed
- Park action: auto call up of PTZ movement, after a defined time of inactivity
- Built-in 16x digital zoom
- 8 programmable patrols, up to 32 presets per patrol
- 4 programmable patterns with the recording time not less than 10 minutes per pattern
- Scheduled PTZ movement
- Support defog and EIS
- Support three-streams; Basic and Advanced video configuration; Real time video at 1080P/960P/720P
- Support up to 8 NAS storage and SD card recording
- Support privacy mask with multiple colors and mosaics on polygonal areas
- 3D Intelligent positioning function
- 3D DNR
- IP66 standard and impact protection up to IK10
- HTTPS encryption and IEEE 802.1X port-based network access control



The Illustra Standard IP PTZ Camera Model ADC-P114-302 is especially designed for deployment in security-critical environments. Powerful PTZ capabilities in terms of speed, agility and ease of deployment are vital to locate, track and zoom quickly onto the security situation area. The PTZ camera must also deliver on accuracy and detail. This camera by American Dynamics can stream crisp and clear images at up to 1920 x 1080 video resolution at 25 frames per second through an endless 360° pan range, and -5°-90° tilt range. A 30x optical zoom capability allows for video surveillance at long distances. An in-built 16x digital zoom allows you to have a more detailed look of the object or individual.

Camera Functions

The Illustra Standard PTZ camera incorporates a high performance CMOS sensor delivering up to 1920x1080 resolution. The camera excels while performing in low light conditions requiring a minimum illumination of 0.02Lux@ (F1.6,AGC ON) in color and 0.002Lux@ (F1.6,AGC ON) for B/W images. A 3D DNR effectively reduces image noise in static as well as moving images. A host of other features like auto iris, auto focus, auto white balance and backlight compensation are also inbuilt into the camera including a convenient auto day and night switch.

The camera supports scheduled PTZ movement, smart tracking and includes a 3D intelligent positioning function to quickly get onto the desired angle of view. A useful power-off memory function restores

PTZ and lens status after reboot. It also supports privacy mask with multiple colors and mosaics on polygonal areas.

The outdoor dome conforms to IP66 standards while its impact protection is up to IK10.

Smart Functions

The camera has a host of intelligent features which make security surveillance a breeze for security staff. Apart from convenience, smart features are vital for rapid decision-making and responses in security alert situations. The camera supports a complete suite of smart functions that range from smart tracking, smart detection and smart recording to smart image processing and smart codec.

In the smart tracking mode the camera supports manual, panorama, intrusion trigger, line crossing trigger, region entrance trigger and region exiting. Security professionals will truly appreciate the camera's smart detection capabilities as it supports face detection, intrusion

detection, line-crossing detection, audio exception detection in addition to region entrance and exiting. Smart recording support includes smart search in smart NVR. Smart codec support allows the camera to deliver images at low bit rate without compromising on image quality. In difficult conditions, the camera supports smart image processing with defog, EIS, and HLC. The camera additionally supports ROI (Region of Interest) codec to help increase image detail and clarity in the ROI.

Exceptional PTZ Capabilities

Take a look at the exceptional PTZ performance of this camera:

- 360° endless pan range and -5°-90° tilt range
- 540°/s pan preset speed and 400°/s tilt preset speed
- 0.1°-300°/s manual pan speed and 0.1°-240°/s manual tilt speed
- ±0.1° preset accuracy
- 300 presets programmable; preset image freezing capability
- 8 patrols, up to 32 presets per patrol
- 4 patterns, with the recording time not less than 10 minutes per pattern
- Park action: auto call up of PTZ movement, after a defined time of inactivity
- 7 alarm inputs and 2 alarm outputs

Network Function for Multi-format Convenience

The network capabilities of this camera are designed to deliver multi-format convenience, versatility and flexibility. The camera supports:

- H.264/MJPEG/MPEG4 video compression and the latest Davinci processing chip and platform
- H.264 encoding with Baseline/Main/High profile
- Region of Interest or ROI encoding (support 24 areas with adjustable levels)
- Built-in Web server
- Micro SD/SDHC/SDXC card local storage
- Up to 8 NAS storage and SD card recording
- HTTPS encryption and IEEE 802.1X port-based network access control
- Three-streams: Basic video configuration, advanced video configuration; Real time video at 1080P/960P/720P
- Multiple network protocols: IPv4/IPv6, HTTP, HTTPS, 802.1X, Qos, FTP, SMTP, UPnP, SNMP, DNS, DDNS, NTP, RTSP, RTP, TCP, UDP, IGMP, ICMP, DHCP, PPPoE
- 1 audio input and 1 audio output

ONVIF Support

The camera is designed to ensure greater interoperability and compatibility on ONVIF (Open Network Video Interface Forum) Platform.

Specifications

ADC-P114-302	
Camera	
Image Sensor	1/2.8" Progressive Scan CMOS
Effective Pixel	2230K pixels
Min. Illumination	Color : 0.3 lux (F1.6, 1/30 sec, 50 IRE, AGC On); B/W : 0.02 lux (F1.6, 1/30 sec, 50 IRE, AGC On) Color : 0.02 lux (F1.6, 1/1 sec, 50 IRE, AGC On); B/W : 0.002 lux (F1.6, 1/1 sec, 50 IRE, AGC On)
White Balance	Auto/ Manual/ ATW/ Indoor/ Outdoor/ Daylight lamp/ Sodium lamp
AGC	Auto/ Manual
S / N Ratio	≥ 55dB
3D DNR	Support
EIS	Support
HLC	Support
Defog	Support
BLC	Support
Digital WDR	Support
Shutter Time	50Hz: 1-1/30,000s, 60Hz: 1-1/30,000s
Day & Night	IR Cut Filter
Digital Zoom	16X
Privacy Mask	24 privacy masks programmable; optional multiple colors and mosaics
Focus Mode	Auto/ Semi-automatic/ Manual
Lens	
Focal Length	4.3-129mm, 30x
Zoom Speed	Approx.3s (Optical Wide-Tele)
Angle of View	65.5-2.11 degree (Wide-Tele)
Min. Working Distance	10-1500mm (Wide-Tele)
Aperture Range	F1.6-F5.0
Pan and Tilt	
Pan Range	360°endless
Pan Speed	Pan Manual Speed: 0.1° -300°/s, Pan Preset Speed: 540°/s
Tilt Range	-5°-90°(Auto Flip)
Tilt Speed	Tilt Manual Speed: 0.1°-240°/s, Tilt Preset Speed: 400°/s
Proportional Zoom	Rotation speed can be adjusted automatically according to zoom multiples
Number of Preset	300
Patrol	8 patrols, up to 32 presets per patrol
Pattern	4 patterns, with the recording time not less than 10 minutes per pattern
Power-off Memory	Support
Park Action	Preset/ Patrol/ Pattern/ Pan scan/ Tilt scan/ Random scan/ Frame scan/ Panorama scan
PTZ Position Display	On/ Off
Preset Freezing	Support
Scheduled Task	Auto scan/ Frame scan/ Random scan/ Patrol/ Pattern/ Preset/ Panorama scan/ Tilt scan/ Dome reboot/ Dome adjust/ Aux output
Smart tracking	Manual/ Panorama/ Intrusion trigger/ Line crossing trigger/ Region entrance trigger/ Region exiting trigger
Alarm	
Alarm Input	7
Alarm Output	2 relay outputs, alarm response actions configurable
Alarm Trigger	Face detection, Intrusion detection, Line crossing detection, Motion detection, Audio Exception Detection, Dynamic analysis, Tampering alarm, Network disconnect, IP address conflict, Storage exception
Alarm Actions	Preset, Patrol, Pattern, SD/SDHC card recording, Relay output, Notification on Client
Input/ Output	
Monitor Output	1.0V[p-p] / 75Ω, NTSC (or PAL) composite, BNC
Audio Input	1 Mic in/Line in interface; Line input: 2-2.4V[p-p]; output impedance: 1KΩ, ±10%
Audio Output	1 Audio output interface; Line level, impedance: 600Ω
Network	
Ethernet	10Base-T / 100Base-TX, RJ45 connector
Max.Image Resolution	1920×1080
Main Stream	50Hz: 25fps(1920×1080), 25fps(1280×960), 25fps(1280×720); 60Hz: 30fps(1920×1080), 30fps(1280×960), 30fps(1280×720)
Sub Stream	50Hz:25fps(704×576), 25fps(352×288), 25fps(176×144); 60Hz:30fps(704×480), 30fps(352×240), 30fps(176×120)
Third Stream	50Hz: 25fps(1920×1080), 25fps(1280×960), 25fps(1280×720), 25fps(704×576), 25fps(352×288), 25fps(176×144) 60Hz: 30fps(1920×1080), 30fps(1280×960), 30fps(1280×720), 30fps(704×480), 30fps(352×240), 30fps(176×120)
Image Compression	H.264/MJPEG/MPEG4, H.264 encoding with Baseline/Main/High profile

SVC	Support
ROI encoding	Support 24 areas with adjustable levels
Audio Compression	G.711ulaw/G.711alaw/G.726/MP2L2/G.722
Protocols	IPv4/IPv6, HTTP, HTTPS, 802.1X, QoS, FTP, SMTP, UPnP, SNMP, DNS, DDNS, NTP, RTSP, RTP, TCP, UDP, IGMP, ICMP, DHCP, PPPoE
Number of Simultaneous Live View	Up to 20
Three Streams	Support
Mini SD Memory Card	Manual REC / Alarm REC., Built-in Micro SD/SDHC/SDXC card Slot, up to 64GB; SD card recording
User/Host Level	Up to 32 users,3 Levels: Administrator, Operator and User
Security Measures	User authentication (ID and PW), Host authentication (MAC address), IP address filtering
System Integration	
Interface for application programming	Support ONVIF (Profile S)
Web Browser	IE 7+, Chrome 18 +, Firefox 5.0 +, Safari 5.02 +, support multi-language
General	
Menu Language	English
RS-485 Protocols	Pelco-P, Pelco-D, self-adaptive
Power	24VAC; Max. 40W, Hi-PoE
Working Temperature / Humidity	-30°C-65°C (-22°F-149°F) 90% or less
Protection Level	IP66 standard, TVS 4,000V lightning protection, surge protection and voltage transient protection
Impact Protection	IEC60068-275Eh, 20J; EN50102, up to IK10
Mounting	Various mounting modes optional
Dimensions	ø220×325.5mm (ø8.66"×12.81")
Weight (approx.)	4Kg (8.82 lbs)
Mount Option	Long-arm wall mount, Corner mount, Pole Mount,Power box mount

Accessories



Long-arm wall mount bracket

Ordering Information

Part Number	Description
ADC-P114-302	30x PTZ 2MP IP with 30/25FPS
ILSOMWALLW	Wall mount
ILSOMPOLEW	Vertical pole mount
ILSOMCORNW	Corner mount
ILSOMBOXPW	Wall mount, Including power box
ILSIMPENSW	Pendant mount, Short
ILSIMPENLW	Pendant mount, Long
ILSIMCEILW	Ceiling mount
ILSOMPARAW	Parapet wall mount
ILSHIPOEIN	60W PoE injector, 1*RJ45 interface,1000M (for ADC-P114-302 only)
ILSPR24VAC	AC24V/2.5A, Europe standard plug

Related Products



VideoEdge



victor



exacqVision

Approvals



Standard Laser IR PTZ Camera



Features That Make a Difference:

- High performance Laser IR LED covering up to 500m (IR) distance
- 3D intelligent positioning function
- 3D DNR
- Power-off memory function: restore PTZ & Lens status after reboot
- Support privacy mask with multiple colors and mosaics on polygonal areas
- 240°/s Pan Preset Speed and 200°/s Tilt Preset Speed
- 0.1°-160°/s Manual Pan Speed and 0.1°-120°/s Manual Tilt Speed
- Park action: auto call up of PTZ movement, after a defined time of inactivity
- Support three-stream; Basic and advanced video configuration; Real time video at 1080P/960P/720P
- HTTPS encryption and IEEE 802.1X port-based network access control



The Illustra Standard Network Laser IR PTZ Camera or Speed Dome Camera Model ADC-P114-302IR is an excellent camera for security-critical environments where locating, tracking and zooming in on subject details with speed is vital. This versatile camera by American Dynamics is one of the most feature-rich cameras on the market today and boasts a 360° endless pan and -2°-90° tilt range and remarkable intelligence while supporting functions like Smart Tracking, Defog, ROI encoding, and HLC. A Laser IR LED is an outstanding feature as it enhances the camera's night vision capabilities of detection over long distances!

Superior IR Function

A high performance Laser IR LED helps ensure that objects are detected over long distances at night even in the most challenging low light conditions. The IR function of this camera covers an impressive distance up to 500m! The IR light is very reliable with the MTBF being measured at up to 30,000 hours. The superior IR function and the camera's ability to detect at a minimum illumination of 0 Lux give you outstanding night time vision.

System Function

The Illustra Standard Network Laser IR PTZ incorporates a 2MP high performance, progressive scan CMOS sensor for full HD quality images up to 1920x1080 resolutions. The camera supports smart tracking, scheduled PTZ movement and 3D intelligent positioning function for auto tracking to the specified zone. The camera has a preset accuracy of $\pm 0.1^\circ$. A convenient Power-off memory function

helps restore PTZ & Lens status after reboot.

ONVIF Support

The IR PTZ Camera is designed to ensure greater interoperability and compatibility on ONVIF Platform.

Complete Convenience with a Suite of Smart Functions

The smartness of this camera makes the work of your security professionals very easy. These smart features are very useful for quick operation and decision making in security alert situations. There is an entire range of smart and powerful functions for tracking, detection, recording and image processing:

- Smart tracking modes: support manual/ panorama/ intrusion trigger/ line crossing trigger, support smart tracking when patrolling between multiple scenarios
- Smart detection: support face detection, intrusion detection, line crossing detection, audio exception detection
- Smart image processing: support defog, HLC, smart IR, EIS
- Smart codec: low bit rate, ROI

Camera Function

The IR PTZ camera incorporates a Lens of Focal Length 4.3-129mm with 30X optical zoom and 16X digital zoom. The versatile camera supports several features critical for a PTZ camera. These include auto-iris and auto-focus capabilities. The auto white balance feature is supported for different modes and situations such as Indoor, Outdoor, Daylight lamp, Sodium lamp.

Backlight compensation support is very useful to avoid silhouettes and to get better images of the subject of interest.

Powerful PTZ Capabilities

A Pan Tilt & Zoom functionality can only be effective when supported by built-in functions to locate, track and zoom onto the security situation area with agility and speed. Security Professionals in a security critical environment also demand accuracy and detail. The Illustra Standard Network Laser IR Camera is in a class by itself on these vital needs. Its performance capabilities include:

- 360° endless pan range and -2°-90° tilt range
- 240°/s Pan Preset Speed and 200°/s Tilt Preset Speed
- 0.1°-160°/s Manual Pan Speed and 0.1°-120°/s Manual Tilt Speed
- 256 presets programmable; preset image freezing capability
- 8 patrols, up to 32 presets per patrol
- 4 patterns, with the recording time not less than 10 minutes per pattern
- Proportional zoom function
- Park action: auto call up of PTZ movement, after a defined time of inactivity
- 7 alarm inputs and 2 alarm outputs

Specifications

ADC-P114-302IR	
Camera	
Image Sensor	1/2.8" Progressive Scan CMOS
Effective Pixel	2230K pixels
Min. Illumination	Colour : 0.3 lux (F1.6, 1/30 sec, 50 IRE, AGC On); B/W : 0.02 lux (F1.6, 1/30 sec, 50 IRE, AGC On); 0 lux with IR Colour : 0.02 lux (F1.6, 1/1 sec, 50 IRE, AGC On); B/W : 0.002 lux (F1.6, 1/1 sec, 50 IRE, AGC On); 0 lux with IR
White Balance	Auto/ Manual/ ATW/ Indoor/ Outdoor/ Daylight lamp/ Sodium lamp
AGC	Auto / Manual
S / N Ratio	≥ 55 dB
3D DNR	Support
HLC	Support
Defog	Support
BLC	Support
Digital WDR	Support
EIS	Support
Shutter Time	50Hz: 1-1/30,000s, 60Hz: 1-1/30,000s
Day & Night	IR Cut Filter
Digital Zoom	16X
Privacy Mask	24 privacy masks programmable; optional multiple colors and mosaics
Focus Mode	Auto / Semiautomatic / Manual
Lens	
Focal Length	4.3-129mm, 30x
Zoom Speed	Approx.3s(Optical Wide-Tele)
Angle of View	57.4-2.8 degree (Wide-Tele)
Min. Working Distance	10-1500mm(Wide-Tele)
Aperture Range	F1.6-F5.0
Pan and Tilt	
Pan Range	360° endless
Pan Speed	Pan Manual Speed: 0.1°-160°/s, Pan Preset Speed: 240°/s
Tilt Range	-2°-90° (Auto Flip)
Tilt Speed	Tilt Manual Speed: 0.1°-120°/s, Tilt Preset Speed: 200°/s
Proportional Zoom	Rotation speed can be adjusted automatically according to zoom multiples
Number of Preset	256
Patrol	8 patrols, up to 32 presets per patrol
Pattern	4 patterns, with the recording time not less than 10 minutes per pattern
Power-off Memory	Supported
Park Action	Preset/ Patrol/ Pattern/ Pan scan/ Tilt scan/ Random scan/ Frame scan/ Panorama scan
PTZ Position Display	On / Off
Preset Freezing	Supported
Scheduled Task	Preset/ Patrol/ Pattern/ Pan scan/ Tilt scan/ Random scan/ Frame scan/ Panorama scan/ Dome reboot/ Self-test action /Alarm output
Smart tracking	Supported

Network Function

The camera supports:

- H.264/MJPEG/MPEG4 video compression and the latest Davinci processing chip and platform
- H.264 encoding with Baseline/Main/High profile
- ROI (Region of Interest) encoding (support 24 areas with adjustable levels)
- Built-in Web server
- SD/SDHC card local storage
- Support up to 8 NAS storage; Edge recording (transmit the videos from SD card to the NAS after network resumed)
- HTTPS encryption and IEEE 802.1X port-based network access control
- Support three-stream; Basic and advanced video configuration; Real time video at 1080P/960P/720P
- Multiple network protocols supported: IPv4/IPv6, HTTP, HTTPS, 802.1X, Qos, FTP, SMTP, UPnP, SNMP, DNS, DDNS, NTP, RTSP, RTP, TCP, UDP, IGMP, ICMP, DHCP, PPPoE
- 1 audio input and 1 audio output

Specifications

ADC-P114-302IR	
Infrared	
IR Distance	500m
IR Intensity	Automatically adjusted, depending on the zoom ratio
Alarm	
Alarm Input	7
Alarm Output	2 relay outputs, alarm response actions configurable
Alarm Trigger	Face detection, Intrusion detection, Line crossing detection, Audio exception detection, Motion detection, Dynamic analysis, Tampering alarm, Network disconnect, IP address conflict, Storage exception
Alarm Action	Preset, Patrol, Pattern, SD/SDHC card recording, Relay output, Notification on Client
Input/ Output	
Monitor Output	1.0V[p-p] / 75Ω, NTSC (or PAL) composite, BNC
Audio Input	1 Mic in/Line in interface, Line input: 2-2.4V[p-p]; output impedance: 1KΩ, ±10%
Audio Output	1 Audio output interface, Line level, impedance: 600Ω
Network	
Ethernet	10Base-T / 100Base-TX, RJ45 connector
Max. Image Resolution	1920x1080
Frame Rate	50Hz: 25fps(1920x1080), 25fps(1280x960), 25fps(1280x720), 60Hz: 30fps(1920x1080), 30fps(1280x960), 30fps(1280x720)
Image Compression	H.264/MJPEG/MPEG4, H.264 encoding with Baseline/Main/High profile
SVC	Support
ROI encoding	Support 24 areas with adjustable levels
Audio Compression	G.711ulaw/G.711alaw/G.726/MP2L2
Protocols	IPv4/IPv6, HTTP, HTTPS, 802.1X, Qos, FTP, SMTP, UPnP, SNMP, DNS, DDNS, NTP, RTSP, RTP, TCR, UDP, IGMP, ICMP, DHCP, PPPoE
Number of Simultaneous Live View	Up to 10
Three Streams	Support
Mini SD Memory Card	Manual REC / Alarm REC. Built-in Micro SD/SDHC/SDXC card Slot, up to 64GB, Edge recording
User/Host Level	Up to 32 users,3 Levels: Administrator, Operator and User
Security Measures	User authentication (ID and PW), Host authentication (MAC address) IP address filtering
System Integration	
Interface for application programming	Support ONVIF
Web Browser	IE 7+, Chrome 18 +, Firefox 5.0 +, Safari 5.02 +, support multi-language
General	
Menu Language	English
RS-485 Protocols	Pelco-P, Pelco-D, self-adaptive
Power	24VAC, Max. 45W (with IR ON)
Working Temperature/ Humidity	-30°C-65°C(-22°F-149°F)(outdoor) / 90% or less
Protection Level	IP66 standard (outdoor dome); TVS 6,000V lightning protection, surge protection and voltage transient protection
Mounting	Various mounting modes optional
Dimensions	ø245x399mm (ø9.65"x15.71")
Weight (approx.)	6.5kg(14.33lbs)
Mount Option (only suitable for outdoor dome)	Long-arm wall mount, Corner mount, Pole Mount, Power box mount

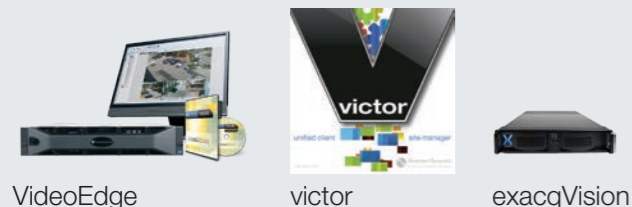
Accessories



Ordering Information

Part Number	Description
ADC-P114-302IR	30x PTZ 2 MP IP with 500 mtr IR with 30/25 FPS
ILSOMWALLW	Wall mount
ILSOMPOLEW	Vertical pole mount
ILSOMCORNW	Corner mount
ILSOMBOXPW	Wall mount, Including power box
ILSIMPENSW	Pendant mount, Short
ILSIMPENLW	Pendant mount, Long
ILSIMCEILW	Ceiling mount
ILSOMPARAW	Parapet wall mount
ILSPR24VAC	AC24V/2.5A, Europe standard plug

Related Products



Approvals



Illustra Flex IP Mini-Domes

Affordable and Versatile
Indoor and Outdoor



Indoor

*Outdoor

Features That Make a Difference:

- 1MP or 3MP resolution for true HD quality images
- Bandwidth and storage friendly
- True Day/Night (TDN) functionality for a true color image
- 3D noise reduction for sharper images and lower bandwidth use in low light
- IR illuminators for clear images in low light conditions (Outdoor only)
- Motion detection for instant alerts of intruders
- IP66-rated enclosure to protect against dust and water damage (Outdoor only)
- IK10 Vandal-resistant housing (Outdoor only)
- A variety of mounting options for quick and easy installation
- ONVIF 2.2 profile S compliant

The versatile Illustra Flex Mini-Dome, Indoor or Outdoor, is a True Day/Night network camera that provides 1MP or 3MP full HD resolution for high quality images. H.264 and MJPEG video compression provides excellent image clarity, and efficient bandwidth and video storage.

With a small, aesthetically pleasing design, the affordably priced Illustra Flex Mini-Dome offers an effective solution for retail stores, K-12 schools, small bank branches and small to medium size offices with a tight budget and a variety of surveillance needs. With a variety of mounting options making it easy to install, these cameras can be strategically placed to blend into in a variety of interior locations such as the cash register terminal at a retail store, the lobby/corridor of an elementary school or inside a 24 hour ATM vestibule.

Featuring built-in IR illuminators, the outdoor Illustra Flex Mini-Dome produces clear images at an effective distance up to 49 feet in a variety of low light conditions. The outdoor camera also comes with a vandal-resistant housing to protect the camera against external impacts that might occur if an intruder was attempting to take the camera out of operation. With an IP66-rated enclosure, this outdoor mini-dome is ideal in situations where dust or water could damage the camera – a loading dock, parking lot or off-site warehouse.

*For indoor installations that require a vandal-resistant mini-dome, the Outdoor model can be used.

Specifications

Operational
 Video Compression H.264/MJPEG
 Max Frame Rate
 Illustra Flex 600 720p @ 30ips
 Illustra Flex 800 3MP @ 15ips
 1080p @ 30ips
 ONVIF-Compliant Yes
Resolutions
 Illustra Flex 600 720p (1280x720)
 SVGA (800x600)
 D1 (720x480)
 VGA (640x480)
 CIF (352x240)
 Illustra Flex 800 3.1MP QXGA
 (2048x1536)
 3MP (2304x1296)
 1080p (1920x1080)
 SXGA (1280x960)
 720p (1280x720)
 SVGA (800x600)
 D1 (720x480)
 4CIF (704x480)
 VGA (640x480)
 CIF (352x240)
Imager 1/3" CMOS
Day/Night Mechanical ICR
Minimum Illumination
 Indoor 0.3 lux @ F1.2 color;
 0.1 lux b/w
 Outdoor 0.3 lux at F1.2 color;
 0.00 lux in IR illuminator mode
IR Illuminator (Outdoor) Effective distance is 15m/49ft,
 IR wavelength 850nm
Shutter Speed 1/7.5-1/8000 sec
Backlight Compensation Off/On (6 selectable areas)
Lens Focal Length 3-9mm F1.2 varifocal lens
Field of View (H/V) Wide Angle: 98°/53°
 Telephoto: 33°/19°
White Balance ATW (2500K-8000K)/Manual
Alarms Motion detection
Alarm Input 1
Audio Input 1
Audio Format G.711-Alaw/G.711-Ulaw
Video Output 1, BNC pigtail included
Video Stream Triple
Wide Dynamic Range Digital WDR

Digital Noise Reduction 3D
 Privacy Zones Yes, 4
Menu Languages Arabic, Chinese (Simplified), Chinese (Traditional), Czech, Danish,
 Dutch, English (default), Finnish, French, German, Italian, Japanese, Korean, Norwegian, Polish,
 Portuguese, Russian, Spanish, Swedish, Turkish
Network
 Ethernet RJ-45 connector
Supported Protocols IPv4, HTTP, HTTPS, TCP, RTSP/RTCP/RTP,
 ICMP, UDP, IGMP, DNS, DHCP, ARP, NTP, SMTP
Configuration Management
 Web Browsing
 Requirements Internet Explorer 8.0 or above
 Security Multiple user access levels with password protection
Onboard Storage
 Card Support SDHC/SDXC
Electrical
Power
 Indoor 12V DC, 24V AC, PoE 802.3af Class 0
 Outdoor 24V AC, PoE 802.3af Class 0
Power Consumption
 Illustra Flex 600 Indoor: 6.8W; Outdoor 10.3W
 Illustra Flex 800 Indoor: 7W; Outdoor 10.5W
Physical
Dimension (DxH)
 Indoor 125 x 106 mm (4.92 x 4.17 in)
 Outdoor 147 x 140.5 mm (5.79 x 5.53 in)
Weight
 Indoor 0.8 kg (1.76 lbs)
 Outdoor 1.9 kg (4.18 lbs)
Housing Material
 Indoor Polycarbonate & ABS
 Outdoor ADC12 / IK10-rated vandal prove
Housing Color
 Indoor Pantone Cool Gray 1C
 Outdoor Light Gray RAL 7035
Operating Temperature
 Indoor -10°C to 50°C (14°F to 122°F)
 Outdoor 24V AC power: -40°C to 50°C (-40°F to 122°F)
 PoE power: -10°C to 50°C (14°F to 122°F)
Operating Humidity 0% to 90%, non-condensing
Storage Temperature -20°C to 60°C (-4°F to 140°F)
Regulatory
Emissions FCC Class A; CE Class A
IP Rating IP66 (Outdoor only)
 Vandal-Resistant IK10-rated (Outdoor only)

Ordering Information

Model Numbers	Description
ADCi600F-D111	Illustra Flex 600 Indoor Mini-Dome, 1MP, varifocal 3-9mm lens
ADCi600F-D021	Illustra Flex 600 Outdoor Mini-Dome, 1MP, varifocal 3-9mm lens, IR, vandal-resistant
ADCi800F-D111	Illustra Flex 800 Indoor Mini-Dome, 3MP, varifocal 3-9mm lens
ADCi800F-D021	Illustra Flex 800 Outdoor Mini-Dome, 3MP, varifocal 3-9mm lens, IR, vandal-resistant

Model Numbers	Description
Mounting Options - Indoor	
ADCi6DPCAPIW	Illustra 600/610/Illustra Flex Indoor Dome pendant cap, white
Mounting Options - Outdoor	
ADCi6FLUSHOW	Flush Mount kit, outdoor dome, white, requires ADCiFDMAOW
ADCi6DPCAPOW	Illustra 600/610/Illustra Flex Outdoor Dome pendant cap, white, requires ADCiFDMAOW
ADCi6WALLWK	Wall Mount kit, indoor/outdoor, white, requires ADCiFDMAOW
ADCiFDMAOW	Mount adaptor plate for Illustra Flex Outdoor Minidomes
Other Mounting Accessories	
ADLOMARM	Gooseneck arm - white
ADCDMCRNRO	Outside corner mount adapter
ADCDMPOLE	Pole mount adapter

* Unless otherwise noted, all specifications are the same for both Illustra Flex 600 and Illustra Flex 800 Indoor and Outdoor models



Illustra Flex IP Bullet Camera

Solid and Affordable



Features That Make a Difference:

- 1MP or 3MP resolution for true HD quality images
- 9-22mm varifocal megapixel lens
- True Day/Night (TDN) functionality for a true color image
- 3D noise reduction for sharper images and lower bandwidth use in low light
- IR illuminators for clear images in low light conditions
- Motion detection for instant alerts of intruders
- IP66-rated enclosure to protect against dust and water damage
- Integrated mount for quick and easy installation
- ONVIF 2.2 profile S compliant

Solid yet affordable, the Illustra Flex Bullet Camera is a True Day/Night network camera that provides 1MP or 3MP full HD resolution for high quality images. H.264 video compression provides excellent image clarity and efficient bandwidth and video storage for a cost-effective video solution.

Featuring a tough exterior, the Illustra Flex Bullet Camera is ideal for exterior applications of small to medium size offices, retail boutiques, K-12 schools and small bank branches looking for a rugged camera that can withstand harsh environments. The integrated 9-22mm varifocal lens delivers an excellent field of view over longer distances

providing the video resolution needed for most outdoor installations. With a sleek IP66-rated enclosure to protect against dust and water damage, this camera is perfect for parking lots and garages, loading docks and any exterior entrances where it is exposed to the elements.

The Illustra Flex Bullet Camera comes complete with built-in IR illuminators for clear video images at up to 82 feet for extreme low light or zero illumination conditions providing crisp, clear video quality both day and night. And, with an integrated mount, installation is a breeze.

Related Products



VideoEdge NVR



VideoEdge Hybrid



exacqVision NVR

Approvals



Specifications

Operational

Video Compression	H.264/MJPEG
Max Frame Rate	
Illustra Flex 600	720p @ 30ips
Illustra Flex 800	3MP @ 15ips
	1080p @ 30ips
ONVIF-Compliant	Yes
Resolutions	
Illustra Flex 600	720p (1280x720) SVGA (800x600) D1 (720x480) VGA (640x480) CIF (352x240)
Illustra Flex 800	3.1MP QXGA (2048x1536) 3MP (2304x1296) 1080p (1920x1080) SXGA (1280x960) 720p (1280x720) SVGA (800x600) D1 (720x480) 4CIF (704x480) VGA (640x480) CIF (352x240)
Imager	1/3" CMOS
Day/Night	Mechanical ICR
Minimum Illumination	0.5 lux at F1.5 color; 0.00 lux in IR Illuminator mode
IR Illuminator	Effective distance is 25m/82ft, IR wavelength 850nm
Shutter Speed	1/7.5-1/8000 sec
Backlight Compensation	Off/On (6 selectable areas)
Lens Focal Length	9-22mm F1.5 varifocal Lens
Field of View (H/V)	Wide Angle: 30.6°/22.6° Telephoto: 13°/9.8°
White Balance	ATW (2500K-8000K)/Manual
Alarms	Motion detection
Alarm Input	1
Audio Input	1
Audio Format	G.711-Alaw/G.711-Ulaw

Video Output	1
Video Stream	Triple
Wide Dynamic Range	Digital WDR
Digital Noise Reduction	3D
Privacy Zones	Yes, 4
Menu Languages	Arabic, Chinese (Simplified), Chinese (Traditional), Czech, Dutch, English (default), French, German, Italian, Japanese, Korean, Polish, Portuguese, Russian, Spanish

Network

Ethernet	RJ-45 connector
Supported Protocols	IPv4, HTTP, HTTPS, TCP, RTSP/RTCP/RTP, ICMP, UDP, IGMP, DNS, DHCP, ARP, NTP, SMTP

Configuration Management

Web Browsing	
Requirements	Internet Explorer 8.0 or above
Security	Multiple user access levels with password protection

Electrical

Power	24V AC, PoE 802.3af Class 0
Power Consumption	15W max. (with LED & heater on using 24V AC)

Physical

Dimension	Ø 115 x 264 mm (Ø 4.53 x 10.39 in)
Weight	2.3 kg (5.07 lbs)
Housing Material	
Main Body	Al 6063-T5
Rear Case/Brackets	ADC12
Housing Color	Silver Pantone 877C
Operating Temperature	
24V AC Power	-40°C to 50°C (-40°F to 122°F)
PoE Power	-10°C to 50°C (14°F to 122°F)
Operating Humidity	0% to 90%, non-condensing
Storage Temperature	-20°C to 60°C (-4°F to 140°F)

Regulatory

Emissions	FCC Class A; CE Class A
IP Rating	IP66

Ordering Information

Model Numbers	Description
ADCi600F-B521	Illustra Flex 600 Bullet, 1MP, 9-22mm varifocal lens
ADCi800F-B521	Illustra Flex 800 Bullet, 3MP, 9-22mm varifocal lens

* Unless otherwise noted, all specifications are the same for both Illustra Flex 600 and Illustra Flex 800



Flex

IP Box Camera (Gen 2)

Compact and Affordable



Features That Make a Difference:

- 1MP or 3MP resolution for true HD quality images
- Bandwidth and storage friendly
- Crystal clear images, even in low light conditions
- True Day/Night (TDN) functionality for a true color image
- Motion detection for instant alerts of intruders
- Ideal for a variety of indoor commercial environments
- ONVIF Profile S

The affordable Illustra Flex Box Camera is a True Day/Night network camera that provides 1MP or 3MP of resolution for high quality images. H.264 and MJPEG video compression provides superior image detail without compromising bandwidth and video storage.

Because of its compact design and affordable price, this camera is best suited for small to medium size offices, retail boutiques, K-12 schools and bank branches looking for a cost-effective camera. Strategically placed, these inconspicuous cameras offer high security without attracting unwanted attention.

The Illustra Flex Box Camera is easy to set up and install into any environment. This camera accommodates a variety of lens types, mounts, and housing accessories, making the box cameras a flexible solution adaptable for any installation or application requirements. For example, choose a telephoto lens for a long, dim hallway or anywhere a longer focal length is required.

The Illustra Flex Box Camera features True Day/Night functionality that switches the camera automatically between color, and black and white mode depending on the ambient illumination level allowing the camera to maintain crystal clear images day or night.

Related Products



VideoEdge NVR



VideoEdge Hybrid



exacqVision NVR

Approvals



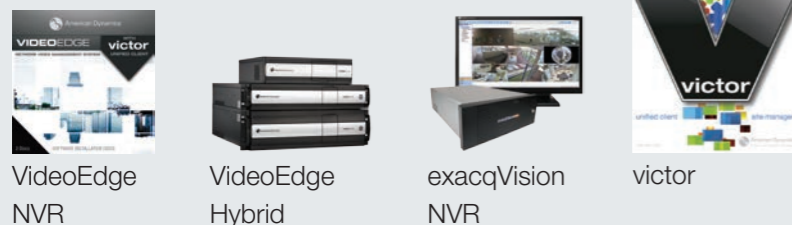
	1MP	3MP*
Operational		
Video Compression	H.264 / MJPEG	H.264 / MJPEG
Max Frame Rate	1280x720@30 fps	2048x1536@15 fps 1920x1080@30 fps
ONVIF-Compliant	Profile S	Profile S
Analog Video Output	Yes	Yes
Resolution	(1280x720) 720p, (800x600) SVGA, (720x480) D1 (640x480) VGA, 640x360, (352x240) CIF	2304x1296, (2048x1536) QXGA, (1920x1080) 1080p, (1280x960) SXGA, (1280x720) 720p, (800x600) SVGA, (720x480) D1, (704x480) 4CIF, (640x480) VGA, (352x240) CIF
Imager	1/4" CMOS	1/3" CMOS
Day/Night	Mechanical ICR	Mechanical ICR
Motion Detection	Yes	Yes
Privacy Zones	Four	Four
Alarm Input/Output	1/1	1/1
Video Streams	Triple	Triple
Minimum Illumination		
Color	0.12 lux	0.3 lux
B/W	0.01 lux	0.1 lux
Wide Dynamic Range	Yes	Yes
Lens Mount	CS Mount	CS Mount
Supported Languages	English, Spanish, French, Portuguese (Brazilian), Italian, Dutch, German, Polish, Japanese, Korean, Simplified Chinese, Traditional Chinese, Czech, Swedish, Arabic, Hungarian, Turkish	English, Spanish, French, Portuguese (Brazilian), Italian, Dutch, German, Polish, Japanese, Korean, Simplified Chinese, Traditional Chinese, Czech, Swedish, Arabic, Hungarian, Turkish
Network		
Ethernet Port	RJ-45	RJ-45
Supported Protocols	IPv4, IPv6, HTTP, HTTPS, TCP, RTSP/RTCP/RTP, ICMP, UDP, IGMP, DNS, DHCP, ARP, NTP, SNMP, 802.1x	IPv4, IPv6, HTTP, HTTPS, TCP, RTSP/RTCP/RTP, ICMP, UDP, IGMP, DNS, DHCP, ARP, NTP, SNMP, 802.1x
Configuration Management		
Web Browser	Internet Explorer 8.0 or above	Internet Explorer 8.0 or above
Security	Multiple user access levels with password protection	Multiple user access levels with password protection
Onboard Storage		
Card Support	SDHC/SDXC (up to 64GB)	SDHC/SDXC (up to 64GB)
Simultaneous Users		
	1 Administrator, 5 Viewers	1 Administrator, 5 Viewers
Electrical		
Power Input	PoE IEEE 802.3af class 0, DC12V, AC24V	PoE IEEE 802.3af class0, DC12V, AC24V
Power Draw	5.5W	7W
Physical		
Dimensions (HxWxL)	56 x 125 x 69 mm (2.2 x 4.9 x 2.7 in)	56 x 125 x 69 mm (2.2 x 4.9 x 2.7 in)
Weight	0.4kg (0.88lbs)	0.4kg (0.88lbs)
Housing Color	Gray	Gray
Operating Temperature	-10°C to 50°C	-10°C to 50°C
Regulatory		
Emissions	FCC Part 15 Class A; EN55022 Class A; AS/NZS CISPR 22 Class A; ICES-003/NMB-003 Class A	FCC Part 15 Class A; EN55022 Class A; AS/NZS CISPR 22 Class A; ICES-003/NMB-003 Class A
Immunity	EN55024	EN55024
Safety	EN60950-1; UL60950-1; IEC 60950-1; CSA 22.2 No. 60950	EN60950-1; UL60950-1; IEC 60950-1; CSA 22.2 No. 60950
Environment	RoHS/WEEE	RoHS/WEEE

Ordering Information

Model Numbers	Description
ADCi600F-X002a	Illustra Flex 1MP Box, no lens, indoor, non vandal, gray, TDN, WDR
ADCi800F-X002	Illustra Flex 3MP Box, no lens, indoor, non vandal, gray, TDN, WDR

* no change

Related Products



Approvals



Illustra 825 Fisheye Camera



Non Vandal-Resistant

Vandal-Resistant

Features That Make A Difference:

- 5MP imager for super high quality images
- 360°/180° panoramic views of wide areas
- Single or multiple fixed views for forensic investigations
- Onboard dewarping for distortion-free images
- ePTZ capabilities for ultra smooth transition between pan, tilt and zoom
- Efficient bandwidth and video storage to reduce costs
- Onboard SD card recording and storage
- Sleek, discreet design
- Quick and easy installation
- Vandal-resistant model available
- ONVIF 2.4 profile S compliant

The Illustra 825 Fisheye Camera with a 5MP sensor provides a 180° panoramic view when mounted on the wall, or a 360° bird's eye view when mounted on a ceiling. The lens captures an ultra-wide field of view looking in all directions in real-time. The camera's onboard dewarping technology provides distortion corrected video streaming of 180°, 360° panoramic 16:9 or active 4:3 views.

The Illustra 825 Fisheye is ideal for applications such as retail stores, expansive indoor parking areas, casinos, building lobbies, elevator banks, corridor intersections and university lecture halls where situational surveillance covering a wide area can be achieved using a single camera. The Illustra 825 Fisheye Camera is always looking in all directions to capture all activity. The camera produces single or multiple fixed views should forensic investigations be required.

The ePTZ movements of the Illustra 825 Fisheye Camera are ultra smooth creating even transition between pan, tilt and zoom movements. Multiple streams of H.264 and MJPEG video compression provide excellent image clarity while efficiently managing bandwidth to reduce storage costs. In addition, the camera's built-in micro SDHC card slot enables several days of recording to be stored locally on a memory card.

The Illustra 825 Fisheye Camera's sleek, discreet design allows it to blend into any environment for inconspicuous surveillance. The vandal-resistant model protects the camera against external impacts that might occur if an intruder was attempting to take the camera out of operation. It's extremely easy to install and simple to set up. A built-in web server provides easy configuration. In addition, when used with the Illustra Connect software tool, discovery, snapshot, configuration, IP address assignments, diagnostics and firmware upgrades take no time at all.

Specifications

Camera
 Video Compression H.264/MJPEG
 Max Frame Rate 14fps (all resolutions)
 ONVIF Compliant ONVIF 2.4 profile S Resolutions
 Fisheye 1936x1936
 Active Image 1-4 960x540
 800x450
 640x360
 480x270
 320x180
 Wall/Ceiling Panorama 1920x1080
 1600x900
 1280x720
 1024x576
 960x540
 800x450
 640x360
 480x270
 320x180
 Imager Type 1/2.5" 5MP CMOS sensor
 Minimum Illumination 1.2 lux
 Shutter AES (Automatic Electronic Shutter)
 Lens Focal Length 1.37mm
 Aperture 2.0
 Field of View 183°
 ePTZ Digital pan/tilt/zoom, presets, sequences, patterns, scans
 White Balance Auto Normal, Auto Wide, and Manual
 Alarms Motion detection
 Wide Dynamic Range 82dB
 Privacy Zones Yes, 4
 Menu Languages English (default), Arabic, Czech, Danish, German, Spanish, French, Hungarian, Italian, Korean, Japanese, Dutch, Polish, Portuguese, Swedish, Turkish, Chinese Traditional, Chinese Simplified

Network
 Ethernet 10/100Base-T
 Supported Protocols TCP/IP, IPv4, IPv6, TCP, UDP, HTTP, FTP, DHCP, WS-Discovery, DNS, DDNS, RTP, TLS, Unicast, Multicast, NTP, SMTP, WS-Security

Configuration Management

Onboard Storage
 Card Type Micro SDHC up to 32GB

Electrical
 Power PoE 802.3af Class 3
 Power Consumption <12.95W

Physical
 Body Diameter 149 mm (5.85 in)
 Height
 Vandal-Resistant 74 mm (2.91 in)
 Non Vandal-Resistant 60 mm (2.36 in)
 Weight
 Vandal-Resistant 0.750 kg
 Non Vandal-Resistant 0.730 kg
 Color White (RAL 9003)

Environmental
 Operating Temperature -10°C to 45°C (14°F to 113°F)
 Humidity 95% non-condensing

Regulatory
 Emissions FCC CFR 47 Part 15 Class A, AS/NZS CISPR22 Class A, ICES-003/NMB-003 Class A, EN 55022
 Immunity EN50130-4, EN 61000-6-1, IEC 62599-2, EN55024
 Safety UL 60950-1, CSA-C22.2 No. 60950, EN 60950-1, IEC 60950-1
 Environmental RoHS, EU Directive 2011/65/EU WEEE, EU Directive 2002/96/EC
 Impact Rating IK10

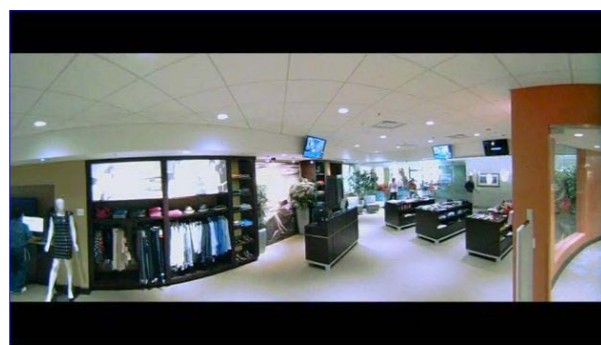
Ordering Information

Model Numbers	Description
Cameras*	
ADCi825-F311	Illustra 825 Fisheye, 5MP, vandal-resistant
ADCi825-F312	Illustra 825 Fisheye, 5MP, non vandal-resistant
Mounts	
ADCiM6WALLWK	Illustra 600 Indoor/Outdoor Wall Mount
ADCi6DPCAPOW	Illustra 600 Outdoor Pendant Cap

* Includes double gang box/mount adapter plate



Illustra 825 Fisheye video stream views in victor/VideoEdge 4.4



PRO Mini-Domes



Features That Make a Difference:

- Superior low light performance
- Face detection and blur detection
- 3 and 5 megapixel resolutions
- Quick and easy installation and configuration
- One-touch focus and motorized zoom
- Multiple motorized lens options
- Reduced storage cost with H.264 and integrated region of interest (ROI) bandwidth management analytics
- Up to five individual programmable regions of interest
- True WDR in 3MP Mini-Dome options
- IP66 and IK10 ratings
- Edge-Ready

The Illustra Pro IP Mini-Domes provide crisp and clear high-definition video, at full frame rates. Whether in bright sun, near darkness or blackout conditions, you can clearly see important details, such as license plates, merchandise labels, and faces.

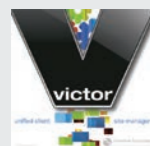
Installation is simple and easy with no additional cost or hardware. The cameras include various integrated mounting options including hard surface and electric box. On indoor cameras, a plenum cap is included as well as mounting clips for recessed flush installation. Configuration is simplified using the most common web browsers to access the browser-based camera interface for feature control including one-touch focus and motorized zoom. Illustra Connect, a powerful remote management and configuration software tool, makes set up and installation even easier.

Using onboard motion-detection, and advanced, integrated analytics, the Illustra Pro Mini-Domes reduce your ongoing cost of operation by minimizing the cost of storage while ensuring image quality. The IP66 and IK10 rated outdoor Mini-Domes are rugged and durable providing a vandal resistant enclosure, water ingress protection, and dust ingress protection. The Mini-Domes can be powered using PoE or 24Vac. The outdoor Mini-Dome can operate in temperatures as low as -40°C when powered using 24Vac.

Edge-Ready

New Pro Mini-Dome cameras support exacqVision Edge VMS software. Using Edge and an SD card for recording storage, the camera effectively serves as a single channel VMS. Details on exacqVision Edge software and licensing are available at www.exacq.com. By utilizing the Edge-Ready capability, this Pro camera becomes an easy, cost effective and efficient way to deploy a server-less high-definition IP video system.

Related Products



victor client



VideoEdge NVRs and Hybrid



exacqVision NVR

Approvals

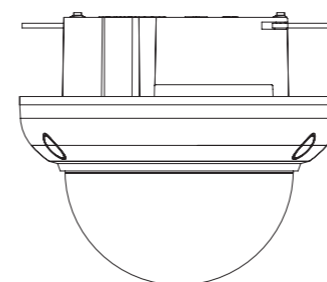


Specifications

Spec	Indoor				Outdoor			
Operational	H.264, MJPEG				H.264, MJPEG			
Video Compression	H.264, MJPEG				H.264, MJPEG			
Max Frame Rate (primary stream)	3MP		5MP		3MP		5MP	
H.264	2048x1536@30fps		2592x1944@15fps		2048x1536@30fps		2592x1944@15fps	
MJPEG	1920x1440@30fps		1920x1440@15fps		1920x1440@30fps		1920x1440@15fps	
ONVIF-Compliant	Yes				Yes			
Analogue Video Output Resolution	1.0 Vp-p, BNC pigtail included				1.0 Vp-p, BNC pigtail included			
	3MP and 5MP							
	(2048x1536) QXGA 4:3 (1920x1440) 4:3 (1600x1200) UXGA 4:3 (1280x960) SXGA 4:3		(1920x1080) 1080p 16:9 (1280x720) 720p 16:9 (1024x768) 1024 XGA 4:3 (1024x576) PAL+ 16:9		(768x576) 4:3 (640x480) 640 VGA 4:3 (640x360) nHD 16:9 (480x360) 480 4:3		(384x288) 4:3 (384x216) 16:9	
	5MP (and all resolutions listed above) (2592x1944) 4:3							
Imager	1/3.2" CMOS progressive scan				1/3.2" CMOS progressive scan			
Day/Night	Yes				Yes			
IR Illumination Optional	Yes				Yes			
IR Distance	20m				20m			
Motion Detection	Yes				Yes			
Face Detection	Yes				Yes			
Privacy Zones	Yes				Yes			
Alarms I/O	2/1				2/1			
Audio	bi-directional, half-duplex				bi-directional, half-duplex			
Video Streams	3 streams plus analog out				3 streams plus analog out			
Minimum Illumination	3MP 3-9mm	3MP 9-22mm	5MP 3-9mm	5MP 9-22mm	3-9mm			
Color	0.05 lux	0.06 lux	0.3 lux	0.4 lux	0.3 lux			
B/W	0.003 lux	0.004 lux	0.02 lux	0.03 lux	0.02 lux			
With IR	0.0 lux	0.0 lux	0.0 lux	0.0 lux	0.0 lux			
Dynamic Range	3MP: True WDR 96dB 5MP: WDR 90dB				3MP: True WDR 96dB 5MP: WDR 90dB			
Field of View (H/V)	3-9mm		9-22mm		3-9mm			
Wide Angle	88°/64°		28°/21°		88°/64°			
Telephoto	30°/22°		12°/9°		30°/23°			
Lens Type	Motorized varifocal				Motorized varifocal			
Network	Ethernet 10/100Base-TX				Ethernet 10/100Base-TX			
Interface	Ethernet 10/100Base-TX				Ethernet 10/100Base-TX			
Ethernet Port	RJ-45				RJ-45			
Supported Protocols	TCP/IP, IPv4, IPv6, TCP, UDP, HTTP, FTP, DHCP, WS-Discovery, DNS, DDNS, RTP, TLS, Unicast, Multicast, NTP, SMTP, WS-Security				TCP/IP, IPv4, IPv6, TCP, UDP, HTTP, FTP, DHCP, WS-Discovery, DNS, DDNS, RTP, TLS, Unicast, Multicast, NTP, SMTP, WS-Security			
Configuration Management	IE 10, 11. Firefox, Chrome				IE 10, 11. Firefox, Chrome			
Web Browser	IE 10, 11. Firefox, Chrome				IE 10, 11. Firefox, Chrome			
Security	Multi-level, IP address filtering, HTTPS, User access log, IEEE 802.1x				Multi-level, IP address filtering, HTTPS, User access log, IEEE 802.1x			
Onboard Storage	Standard SD format up to 4GB, SDHC format up to 32GBytes and SDXC up to 128GBytes				Standard SD format up to 4GB, SDHC format up to 32GBytes and SDXC up to 128GBytes			
Card Support	Standard SD format up to 4GB, SDHC format up to 32GBytes and SDXC up to 128GBytes				Standard SD format up to 4GB, SDHC format up to 32GBytes and SDXC up to 128GBytes			
Pre-alarm Recording	Yes				Yes			
Recording Format	AVI				AVI			
Playback	Via browser using FTP				Via browser using FTP			
Recording Trigger	Dry contact alarms, motion detection, face detection				Dry contact alarms, motion detection, face detection			
Simultaneous Users	Ten				Ten			
Electrical	24VAC 19W, PoE IEEE 802.3af Class 3				24VAC, PoE IEEE 802.3af Class 3			
Power Input	24VAC 19W, PoE IEEE 802.3af Class 3				24VAC, PoE IEEE 802.3af Class 3			
Power Draw	12.95W				12.95W			
Physical	130 x 138 mm (5.12 x 5.43 in)				135 x 160 mm (5.31 x 6.30 in)			
Dimensions (WxH)	130 x 138 mm (5.12 x 5.43 in)				135 x 160 mm (5.31 x 6.30 in)			
Weight	1 kg (2.20 lbs)				1.8 kg (3.97 lbs)			
Housing Color	White or black				White or black			
Operating Temperature	-10° to 40°C (14° to 104°F)				PoE: -30° to 50°C (-22° to 122°F) 24VAC: -40° to 50°C (-40° to 122°F)			
Vandal Resistant	IK10				IK10			
Outdoor Rating	N/A				IP66			
Plenum-Rated	Yes				N/A			
Regulatory	EN 55022 Class A; FCC Part 15 Class A; ICES-003/NMB-003 Class A; AS/NZS CISPR 22 Class A				EN 55022 Class A; FCC Part 15 Class A; ICES-003/NMB-003 Class A; AS/NZS CISPR 22 Class A			
Emissions	EN 55022 Class A; FCC Part 15 Class A; ICES-003/NMB-003 Class A; AS/NZS CISPR 22 Class A				EN 55022 Class A; FCC Part 15 Class A; ICES-003/NMB-003 Class A; AS/NZS CISPR 22 Class A			
Immunity	EN 50130-4; EN55024				EN 50130-4; EN55024			
Safety	EN 60950-1; UL 60950-1 CSA 22.2 No. 60950-1; IEC 60950-1				EN 60950-1; UL 60950-1 CSA 22.2 No. 60950-1; IEC 60950-1			

Mounts and Accessories

Pendant / Gooseneck Mounts



Integrated recessed mount (indoor models)

Mounting Options			
Mount	Image	Model Number	Description
Flush Mount		ADCIM6FLUSHOW ADCIM6FLUSHOB	Flush Mount Kit: Outdoor Dome, White/Black
Pendant Cap		ADCi6DPCAPIW ADCi6DPCAPIB	Pendant Cap: Indoor, White/Black
		ADCi6DPCAPOW ADCi6DPCAPOB	Pendant Cap: Outdoor, White/Black
Wall Mount		ADCi6M6WALLWK ADCi6M6WALLBK	Wall Mount Kit: Indoor/Outdoor, White/Black

Accessories			
Adapter	Image	Model Number	Description
Gooseneck Arm		ADLOMARM - White ADCBMARM - Black	For use with Pendant Cap
Outside Corner Mount Adapter		ADCCMCRNRO	For use with Pendant Cap and Gooseneck Arm, or directly to the camera back plate.
Pole Mount Adapter		ADCCMPOLE	For use with Pendant Cap and Gooseneck Arm, or directly to the camera back plate.

ILLUSTRATION CAMERA MODEL KEY											
ILLUSTRATION	SERIES	MODEL	RESOLUTION	FORM FACTOR	LENS	ENVIRONMENT HOUSING	BUBBLE	COLOR	DAY/NIGHT/IR	WDR	OTHER
I	E = Essentials	L = Lite	01 = 1MP	B = Bullet	N = None	N = None	N = None	B = Black	C = Color Only	N = No	A = Hardware Update
	F = Flex	P = Plus	02 = 2MP	C = Compact Dome	F = Fixed	A = Indoor NonVandal	C = Clear	G = Gray	I = TDN w/IR	T = Multi-Exposure (>60 Frames)	
	P = Pro	S = Standard	03 = 3MP	D = Dome	0 = 1.8-3mm	B = Outdoor NonVandal	S = Smoked	S = Silver	S = Soft Day/Night	Y = Yes	
	Q = Edge		05 = 5MP	F = Fisheye	1 = 2.8-12mm	I = Indoor Vandal		W = White	T = TDN		
				M = Mini-Bullet	2 = 3-9mm	O = Outdoor Vandal					
				P = PTZ	3 = 9-22mm						
				W = Wireless Cube	4 = 9-40mm						
				X = Box	5 = 20x						
					6 = 30x						

3 MP Mini-Domes

IPS03D21CWTT	Illustra Pro 3MP Mini-dome, 3-9mm, indoor, vandal, clear, white, TDN, TWDR
IPS03D21CWIT	Illustra Pro 3MP Mini-dome, 3-9mm, indoor, vandal, clear, white, TDN w/IR, TWDR
IPS03D2OCWTT	Illustra Pro 3MP Mini-dome, 3-9mm, outdoor, vandal, clear, white, TDN, TWDR
IPS03D2OCWIT	Illustra Pro 3MP Mini-dome, 3-9mm, outdoor, vandal, clear, white, TDN w/IR, TWDR
IPS03D21SWTT	Illustra Pro 3MP Mini-dome, 3-9mm, indoor, vandal, smoked, white, TDN, TWDR
IPS03D21SWIT	Illustra Pro 3MP Mini-dome, 3-9mm, indoor, vandal, smoked, white, TDN w/IR, TWDR
IPS03D2OSWTT	Illustra Pro 3MP Mini-dome, 3-9mm, outdoor, vandal, smoked, white, TDN, TWDR
IPS03D2OSWIT	Illustra Pro 3MP Mini-dome, 3-9mm, outdoor, vandal, smoked, white, TDN w/IR, TWDR
IPS03D21CBTT	Illustra Pro 3MP Mini-dome, 3-9mm, indoor, vandal, clear, black, TDN, TWDR
IPS03D21CBIT	Illustra Pro 3MP Mini-dome, 3-9mm, indoor, vandal, clear, black, TDN w/IR, TWDR
IPS03D2OCBTT	Illustra Pro 3MP Mini-dome, 3-9mm, outdoor, vandal, clear, black, TDN, TWDR
IPS03D2OCBIT	Illustra Pro 3MP Mini-dome, 3-9mm, outdoor, vandal, clear, black, TDN w/IR, TWDR
IPS03D21SBTT	Illustra Pro 3MP Mini-dome, 3-9mm, indoor, vandal, smoked, black, TDN, TWDR
IPS03D21SBIT	Illustra Pro 3MP Mini-dome, 3-9mm, indoor, vandal, smoked, black, TDN w/IR, TWDR
IPS03D2OSBTT	Illustra Pro 3MP Mini-dome, 3-9mm, outdoor, vandal, smoked, black, TDN, TWDR
IPS03D2OSBIT	Illustra Pro 3MP Mini-dome, 3-9mm, outdoor, vandal, smoked, black, TDN w/IR, TWDR
IPS03D31CWTT	Illustra Pro 3MP Mini-dome, 9-22mm, indoor, vandal, clear, white, TDN, TWDR
IPS03D31CWIT	Illustra Pro 3MP Mini-dome, 9-22mm, indoor, vandal, clear, white, TDN w/IR, TWDR
IPS03D3OCWTT	Illustra Pro 3MP Mini-dome, 9-22mm, outdoor, vandal, clear, white, TDN, TWDR
IPS03D3OCWIT	Illustra Pro 3MP Mini-dome, 9-22mm, outdoor, vandal, clear, white, TDN w/IR, TWDR
IPS03D31SWTT	Illustra Pro 3MP Mini-dome, 9-22mm, indoor, vandal, smoked, white, TDN, TWDR
IPS03D31SWIT	Illustra Pro 3MP Mini-dome, 9-22mm, indoor, vandal, smoked, white, TDN w/IR, TWDR
IPS03D3OSWTT	Illustra Pro 3MP Mini-dome, 9-22mm, outdoor, vandal, smoked, white, TDN, TWDR
IPS03D3OSWIT	Illustra Pro 3MP Mini-dome, 9-22mm, outdoor, vandal, smoked, white, TDN w/IR, TWDR
IPS03D31CBTT	Illustra Pro 3MP Mini-dome, 9-22mm, indoor, vandal, clear, black, TDN, TWDR
IPS03D31CBIT	Illustra Pro 3MP Mini-dome, 9-22mm, indoor, vandal, clear, black, TDN w/IR, TWDR
IPS03D3OSBTT	Illustra Pro 3MP Mini-dome, 9-22mm, outdoor, vandal, smoked, black, TDN, TWDR
IPS03D3OSBIT	Illustra Pro 3MP Mini-dome, 9-22mm, outdoor, vandal, smoked, black, TDN w/IR, TWDR

5 MP Mini-Domes

IPS05D21CWTY	Illustra Pro 5MP Mini-dome, 3-9mm, indoor, vandal, clear, white, TDN, WDR
IPS05D21CWYI	Illustra Pro 5MP Mini-dome, 3-9mm, indoor, vandal, clear, white, TDN w/IR, WDR
IPS05D2OCWTY	Illustra Pro 5MP Mini-dome, 3-9mm, outdoor, vandal, clear, white, TDN, WDR
IPS05D2OCWYI	Illustra Pro 5MP Mini-dome, 3-9mm, outdoor, vandal, clear, white, TDN w/IR, WDR
IPS05D21SWTY	Illustra Pro 5MP Mini-dome, 3-9mm, indoor, vandal, smoked, white, TDN, WDR
IPS05D21SWYI	Illustra Pro 5MP Mini-dome, 3-9mm, indoor, vandal, smoked, white, TDN w/IR, WDR
IPS05D2OSWTY	Illustra Pro 5MP Mini-dome, 3-9mm, outdoor, vandal, smoked, white, TDN, WDR
IPS05D2OSWYI	Illustra Pro 5MP Mini-dome, 3-9mm, outdoor, vandal, smoked, white, TDN w/IR, WDR
IPS05D21CBTY	Illustra Pro 5MP Mini-dome, 3-9mm, indoor, vandal, clear, black, TDN, WDR
IPS05D21CBYI	Illustra Pro 5MP Mini-dome, 3-9mm, indoor, vandal, clear, black, TDN w/IR, WDR
IPS05D2OCBTY	Illustra Pro 5MP Mini-dome, 3-9mm, outdoor, vandal, clear, black, TDN, WDR
IPS05D2OCBYI	Illustra Pro 5MP Mini-dome, 3-9mm, outdoor, vandal, clear, black, TDN w/IR, WDR
IPS05D21SBTY	Illustra Pro 5MP Mini-dome, 3-9mm, indoor, vandal, smoked, black, TDN, WDR
IPS05D21SBYI	Illustra Pro 5MP Mini-dome, 3-9mm, indoor, vandal, smoked, black, TDN w/IR, WDR
IPS05D2OSBTY	Illustra Pro 5MP Mini-dome, 3-9mm, outdoor, vandal, smoked, black, TDN, WDR
IPS05D2OSBYI	Illustra Pro 5MP Mini-dome, 3-9mm, outdoor, vandal, smoked, black, TDN w/IR, WDR
IPS05D31CWTY	Illustra Pro 5MP Mini-dome, 9-22mm, indoor, vandal, clear, white, TDN, WDR
IPS05D31CWYI	Illustra Pro 5MP Mini-dome, 9-22mm, indoor, vandal, clear, white, TDN w/IR, WDR
IPS05D3OCWTY	Illustra Pro 5MP Mini-dome, 9-22mm, outdoor, vandal, clear, white, TDN, WDR
IPS05D3OCWYI	Illustra Pro 5MP Mini-dome, 9-22mm, outdoor, vandal, clear, white, TDN w/IR, WDR
IPS05D31SWTY	Illustra Pro 5MP Mini-dome, 9-22mm, indoor, vandal, smoked, white, TDN, WDR
IPS05D31SWYI	Illustra Pro 5MP Mini-dome, 9-22mm, indoor, vandal, smoked, white, TDN w/IR, WDR
IPS05D3OSWTY	Illustra Pro 5MP Mini-dome, 9-22mm, outdoor, vandal, smoked, white, TDN, WDR
IPS05D3OSWYI	Illustra Pro 5MP Mini-dome, 9-22mm, outdoor, vandal, smoked, white, TDN w/IR, WDR
IPS05D31CBTY	Illustra Pro 5MP Mini-dome, 9-22mm, indoor, vandal, clear, black, TDN, WDR
IPS05D31CBYI	Illustra Pro 5MP Mini-dome, 9-22mm, indoor, vandal, clear, black, TDN w/IR, WDR
IPS05D3OSBTY	Illustra Pro 5MP Mini-dome, 9-22mm, outdoor, vandal, smoked, black, TDN, WDR
IPS05D3OSBYI	Illustra Pro 5MP Mini-dome, 9-22mm, outdoor, vandal, smoked, black, TDN w/IR, WDR

Related Products



VideoEdge NVR



victor



exacqVision VMS

Approvals



Illustra EDGE
Simple, Out-of-the-Box IP Camera/VMS Solution



The Illustra Edge Series IP cameras are a complete camera/VMS solution combining the ease and simplicity of the exacqVision VMS with the quality and features of Illustra IP cameras.

The Illustra Edge Solution:

- Easy and cost effective way to deploy a high-definition IP video system for up to 10 cameras
- No server hardware required—video stored to the onboard micro SD card. Saves time and money.
- Complete bundled solution including a licensed exacqVision Edge server with 1 year SSA, premium quality, high performance Micro SD Card and an Illustra Pro Fisheye, Compact Mini-Dome, or Compact Mini-Bullet camera
- Expandable to unlimited servers with simple license upgrade to exacqVision Edge+

High Definition Video as Easy as 1-2-3

- 1 Mount**
- 2 Connect**
- 3 Watch**

High Quality, High Definition Compact Cameras

Illustra Pro Fisheye

- High resolution 360° situation awareness
- On-board and Client-side dewarping
- 5MP



Illustra Pro Compact Dome

- 2MP, 1080p
- Wide field of view
- Discreet
- 3-Axis gimbal



Illustra Pro Compact Mini-Bullet

- 2MP, 1080p
- True day/night
- IR illumination
- Wide dynamic range



Specifications

Ideal Illustra Edge Applications

- Small retail or office installations where less than 10 cameras are needed
- Remote sites where server hardware installations is not practical (power transformer sub-stations, oil & gas wells)

- Enterprise installations with the need to deploy cameras not included or accessible on the central surveillance system
- Environments with unreliable wireless or WAN connectivity – camera records even when network is down
- Monitor remote server rooms independently of building surveillance recording.



TYPICAL RECORDING*				
SD Card	Camera Resolution			
	1MP	2MP	3MP	5MP
32GB	13 days	6 days	N/A	N/A
64GB	27 days	12 days	8 days	5 days

Typical storage experience based on recording at 10 fps at 15% motion using H.264 codec. Results will vary. 10 days motion based video recording (in most installation use-cases)

* Upgrade to Edge+ to archive more video to an exacqVision S-Series network storage appliance or other compatible NAS appliance.

exacqVision Edge

System	
Maximum simultaneous cameras	10
Free Windows, Linux, or Mac clients	Yes
Browser-based viewing of live/stored video	with installation of free PC web service software
Tablet/smartphone based viewing of live/stored video	with installation of free web service software on a separate computer
Client-side dewarp of fisheye camera	Yes
Client bandwidth throttling	Yes
Pre-post alarm recording	Yes
Soft triggers	Yes
Live View	
View cameras on multiple monitors	Yes
PTZ control and presets	Yes
Digital PTZ controls and presets	Yes
Motion and alarm indication	Yes
Search, Playback, Export, and Archive	
exacqReplay instant replay	Yes
Thumbnail and timeline event search	Yes
Multi-camera playback	Yes
Export video to DVD	Yes
Export video to .AVI, .MOV, or .EXE file	Yes

Illustra IP Cameras

	Compact Mini-Dome	Compact Mini-Bullet	Fisheye
Max Frame Rate/Video Compression			
H.264	30 ips @ 1920 x 1080	30 ips @ 1920 x 1080	30 ips @ 1920 x 1080
MJPEG	30 ips @ 1920 x 1080	30 ips @ 1920 x 1080	30 ips @ 1920 x 1080
Resolution Options	720p, 1080p	720p, 1080p	CIF, 4CIF, 720p, 1080p
Imager	1/2.7"	1/2.9"	1/2.5"
Day/Night	Soft Day/Night	True Day/Night	Color only
Minimum Illumination (Lux)			
Color	0.3	N/A	1.2 lux
B/W	N/A	0 at F2.0	N/A
IR	N/A	0	N/A
IR Illuminator	No	Yes	N/A
Lens Type	2.80mm fixed	4.3mm	1.37mm
Horizontal Field of View	123.2°	74.4° (H) - 40.8° (V)	180°
Auto Focus/Motorized Zoom	No	Yes	No
Motion Detection	Yes	Yes	Yes
Alarm Input/Output	N/A	1/1	N/A
Wide Dynamic Range	N/A	96dB	82dB
Onboard Storage	Yes, SD card included	Yes, SD card included	Yes, SD card included
Power Input	PoE 802.3af, Class 2	12V DC, PoE 802.3af	PoE 802.3af, Class 3
Power Draw	7W maximum, average of 3-5W for normal daily use	4.44W	See datasheet
Operating Temperature	PoE: 0°C to 40°C (32°F to 104°F)	12V DC: -20°C to 50°C (-4°F to 122°F); PoE: -20°C to 45°C (-4°F to 113°F)	PoE: -10°C to 45°C (14°F to 113°F)
Dimensions	55 x 105 x 105 mm (2.17 x 4.13 x 4.13 in)	73.5 x 76 x 245 mm (2.89 x 2.99 x 9.65 in)	Body diameter: 149 mm (5.85 in); Height: Vandal-resistant 74 mm (2.91 in), Non Vandal-Resistant 60 mm (2.36 in)
Outdoor Rating	N/A	IP66	N/A
Vandal Resistant	IK10-rated	IK10-rated	N/A
Housing Color	White	White	White

Model Numbers

Model	Description
IQS02CFICWSN	Illustra Edge 2MP compact mini-dome, 2.8mm, indoor, vandal, clear, white, SDN, 32GB micro SD card, exacqVision Edge server license with 1 Year SSA
IQS02MFONWTY	Illustra Edge 2MP compact mini-bullet, 4.3mm, outdoor, vandal, white, TDN, WDR, 32GB micro SD card, exacqVision Edge server license with 1 Year SSA
IQS05FFACWCY	Illustra Edge 5MP Fisheye 360°, 1.37mm, indoor, non-vandal, white, color, WDR, 64GB micro SD card, exacqVision Edge server license with 1 Year SSA

ILLUSTRRA CAMERA MODEL KEY											
ILLUSTRRA	SERIES	MODEL	RESOLUTION	FORM FACTOR	LENS	ENVIRONMENT HOUSING	BUBBLE	COLOR	DAY/NIGHT/IR	WDR	OTHER
I	E = Essentials	L = Lite	01 = 1MP	B = Bullet	N = None	N = None	N = None	B = Black	C = Color Only	N = No	A = Hardware Update
	F = Flex	P = Plus	02 = 2MP	C = Compact Dome	F = Fixed	A = Indoor NonVandal	C = Clear	G = Gray	I = TDN w/IR	T = Multi-Exposure (>60 Frames)	
	P = Pro	S = Standard	03 = 3MP	D = Dome	0 = 1.8–3mm	B = Outdoor NonVandal	S = Smoked	S = Silver	S = Soft Day/Night	Y = Yes	
	Q = Edge		05 = 5MP	F = Fisheye	1 = 2.8–12mm	I = Indoor Vandal		W = White	T = TDN		
				M = Mini-Bullet	2 = 3–9mm	O = Outdoor Vandal					
				P = PTZ	3 = 9–22mm						
				W = Wireless Cube	4 = 9–40mm						
				X = Box	5 = 20x						
					6 = 30x						

Related Products



exacqVision Mobile App



victor

Approvals



ONVIF Driving network video through global standardization



Standard IP Indoor Mini-Dome Camera



Features That Make a Difference:

- 2 megapixels resolution for true HD quality images
- 2.8 – 12 mm varifocal lens
- True Day/Night (TDN) functionality for true color image
- IR illuminators for clear images in low light conditions
- Wide Dynamic Range
- 3D noise reduction for sharper images and lower bandwidth use in low light
- ONVIF-compliant

The Illustra Standard Indoor Mini-Dome Camera provides 2MP full HD resolution for high quality images. Whether in bright sun, near darkness or blackout conditions, you can clearly see important details, such as merchandise labels, and faces. H.264 video compression provides excellent image clarity and efficient bandwidth and video storage for a cost-effective video solution.

With a small, aesthetically pleasing design, the Illustra Standard Indoor Mini-Dome is ideal for indoors applications offering an effective solution for retail stores, K-12 schools, small bank branches and small to medium size offices with a tight budget

and a variety of surveillance needs. The sensitivity of the sensor and processor combination is enabled through the latest technology, such as True Day/Night. In low light, this camera delivers clear video surveillance. The integrated 2.8 – 12mm varifocal lens delivers an excellent field of view over longer distances providing the video resolution needed for most installations. The Illustra Standard Indoor Mini-Dome comes complete with built-in IR illuminators for clear video images in extreme low light or zero illumination conditions providing crisp, clear video quality both day and night.



Specifications

Operational

Imager	1/2.8" SONY 2.43 mega low illumination CMOS
Video Compression	H.264/MJPEG
Day/Night	Mechanical ICR
Minimum Illumination	0Lux/F1.4(IR ON)
IR Illumination	10-20M (24x05 IR Leds)
Electronic Shutter	Auto/Manual (1/25-1/10000)
Lens	2.8-12mm
Resolution	Main-stream: D1/Q1080P(960x540)/HD720P/HD1080P 1-25/30fps Sub-stream: CIF/QCIF/D1/Q720P/QVGA/VGA 1-25/30fps
Digital Noise Reduction	3D
Wide Dynamic Range	Digital WDR
Motion Detection	4 Zones, Multi-Level Sensitivity
Privacy Zones	4 Zones
Snapshot	Support JPEG format
Password Protection	Support
Character Display	Support Channel/ Date
ONVIF	Yes

Network

Ethernet	RJ45 10M/100M adaptive
Support Protocol	TCP/IP, UDP, HTTP, DHCP, RTP/RTSP, DNS, NTP, PPPOE, UPNP, SMTP

Video Output

	1.0 Vp-p, 75 ohm, composite, BNC output
--	---

Configuration Management

Web Browsing Requirements	Internet Explorer 9.0 or above
---------------------------	--------------------------------

Electrical

Power	12V DC, PoE
Power Consumption	< 8W

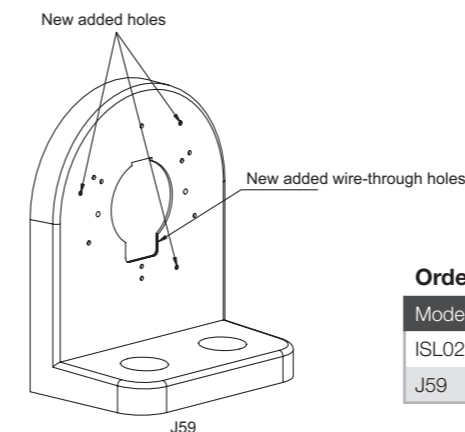
Physical

Dimension	Ø127.7 (W) x 100.2 (H) mm
Weight	~ 300g
Operating Temperature	-10°C ~ 55°C
Operating Humidity	0%-90%, non-condensing

Regulatory

Emissions	FCC Part 15 CE: EN55022
Immunity	CE: EN50130-4

Mounts & Accessories



Ordering Information

Model	Description
ISL02D1ACWIY	Illustra STD Indoor Mini-Dome, WDR, TDN, IR, Varifocal 2.8-12mm, 2MP
J59	Illustra STD ISL02D1ACWIY Indoor Mini-Dome, Wall Mount

ILLUSTR A CAMERA MODEL KEY											
ILLUSTR A SERIES	MODEL	RESOLUTION	FORM FACTOR	LENS	ENVIRONMENT HOUSING	BUBBLE	COLOR	DAY/NIGHT/IR	WDR	OTHER	
I	E = Essentials L = Lite	01 = 1MP	B = Bullet	N = None	N = None	N = None	B = Black	C = Color Only	N = No	A = Hardware Update	
	F = Flex P = Plus	02 = 2MP	C = Compact Dome	F = Fixed	A = Indoor NonVandal	C = Clear	G = Gray	I = TDN w/IR	T = Multi-Exposure (>60 Frames)		
	P = Pro S = Standard	03 = 3MP	D = Dome	0 = 1.8-3mm	B = Outdoor NonVandal	S = Smoked	S = Silver	S = Soft Day/Night	Y = Yes		
	Q = Edge	05 = 5MP	F = Fisheye	1 = 2.8-12mm	I = Indoor Vandal		W = White	T = TDN			
	S = Standard		M = Mini-Bullet	2 = 3-9mm	O = Outdoor Vandal						
			P = PTZ	3 = 9-22mm							
			W = Wireless Cube	4 = 9-40mm							
			X = Box	5 = 20x							
				6 = 30x							

Related Products



Approvals





Standard IP Outdoor Mini-Dome Camera



Features That Make a Difference:

- 2 megapixels resolution for true HD quality images
- 2.8 – 12 mm varifocal lens
- True Day/Night (TDN) functionality for true color image
- IR illuminators for clear images in low light conditions
- Wide Dynamic Range
- 3D noise reduction for sharper images and lower bandwidth use in low light
- IP66-rated enclosure to protect against dust and water damage
- ONVIF compliant

The Illustra Standard Outdoor Mini-Dome provides 2MP full HD resolution for high quality images. Whether in bright sun, near darkness or blackout conditions, you can clearly see important details, such as license plates, merchandise labels, and faces. H.264 video compression provides excellent image clarity and efficient bandwidth and video storage for a cost-effective video solution.

Featuring a tough exterior, the Illustra Standard Outdoor Mini-Dome is ideal for indoors and outdoors applications. The sensitivity of the sensor and processor combination is enabled through the latest technology, such as True Day/Night. In low light, this camera delivers clear video

surveillance. The integrated 2.8 – 12mm varifocal lens delivers an excellent field of view over longer distances providing the video resolution needed for most installations. With a sleek IP66-rated enclosure to protect against dust and water damage, this camera is perfect for parking lots and garages, loading docks and any exterior entrances where it is exposed to the elements.

The Illustra Standard Outdoor Mini-Dome comes complete with built-in IR illuminators for clear video images in extreme low light or zero illumination conditions providing crisp, clear video quality both day and night.

Specifications

Operational	
Imager	1/2.8"SONY 2.43 mega low illumination CMOS
Video Compression	H.264/MJPEG
Day/Night	Mechanical ICR
Minimum Illumination	0Lux/F1.4(IR ON)
IR Illumination	20-30M (28xφ5 IR Leds)
Electronic Shutter	Auto/Manual(1/25~1/10000)
Lens	2.8-12mm
Resolution	Main-stream:D1/Q1080P(960*540)/HD720P/HD1080P 1-25/30fps Sub-stream: CIF/QCIF/D1/Q720P/QVGA/VGA 1-25/30fps
Digital Noise Reduction	3D
Wide Dynamic Range	Digital WDR
Motion Detection	4 Zones, Multi- Level Sensitivity
Privacy Zones	4 Zones
Snapshoot	Support JPEG format
Password Protection	Support
Character Display	Support(Channel /Date)
ONVIF	Yes

Network

Ethernet	RJ45 10M/100M adaptive
Support Protocol	TCP/IP, UDP, HTTP, DHCP, RTP/RTSP, DNS, NTP, PPPOE, UPNP, SMTP

Video Output

Video Output	1.0 Vp-p, 75 ohm, composite, BNC output
------------------------	---

Configuration Management

Web Browsing Requirements	Internet Explorer 9.0 or above
-------------------------------------	--------------------------------

Electrical

Power	12V DC, PoE
Power Consumption	< 12W

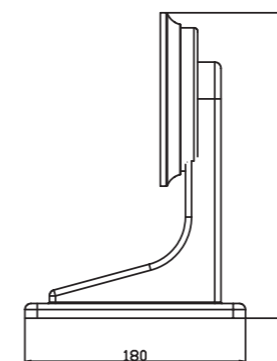
Physical

Dimension	φ148.5(W)*128.7(H)mm
Weight	~ 1000g
Operating Temperature	-20°C ~ 55°C
Operating Humidity	0%-90%, non-condensing

Regulatory

Emissions	FCC Part 15 CE: EN55022
Immunity	CE: EN50130-4
IP Rating	IP66

Mounts & Accessories



Ordering Information

Model	Description
ISL02D1OCWIY	Illustra STD Outdoor Mini-Dome, WDR, TDN, IR, Varifocal 2.8-12mm, 2MP
J11	Illustra STD ISL02D1OCWIY Outdoor Mini-Dome, Wall Mount

ILLUSTRATION CAMERA MODEL KEY

ILLUSTRATION SERIES	MODEL	RESOLUTION	FORM FACTOR	LENS	ENVIRONMENT HOUSING	BUBBLE	COLOR	DAY/NIGHT/IR	WDR	OTHER
I	E = Essentials L = Lite	01 = 1MP	B = Bullet	N = None	N = None	N = None	B = Black	C = Color Only	N = No	A = Hardware Update
	F = Flex P = Plus	02 = 2MP	C = Compact Dome	F = Fixed	A = Indoor NonVandal	C = Clear	G = Gray	I = TDN w/IR	T = Multi-Exposure (>60 Frames)	
	P = Pro S = Standard	03 = 3MP	D = Dome	0 = 1.8-3mm	B = Outdoor NonVandal	S = Smoked	S = Silver	S = Soft Day/Night	Y = Yes	
	Q = Edge	05 = 5MP	F = Fisheye	1 = 2.8-12mm	I = Indoor Vandal		W = White	T = TDN		
	S = Standard		M = Mini-Bullet	2 = 3-9mm	O = Outdoor Vandal					
			P = PTZ	3 = 9-22mm						
			W = Wireless Cube	4 = 9-40mm						
			X = Box	5 = 20x						
				6 = 30x						



Related Products



Approvals





Standard IP Bullet Camera



Features That Make a Difference:

- 2 megapixels resolution for true HD quality images
- 2.8 – 12 mm varifocal lens
- True Day/Night (TDN) functionality for true color image
- IR illuminators for clear images in low light conditions
- Wide Dynamic Range
- 3D noise reduction for sharper images and lower bandwidth use in low light
- IP66-rated enclosure to protect against dust and water damage
- Integrated mount for quick and easy installation
- ONVIF compliant

The Illustra Standard Bullet Camera provides 2MP full HD resolution for high quality images. Whether in bright sun, near darkness or blackout conditions, you can clearly see important details, such as license plates, merchandise labels, and faces. H.264 video compression provides excellent image clarity and efficient bandwidth and video storage for a cost-effective video solution.

Featuring a tough exterior, the Illustra Standard Bullet Camera is ideal for indoors and outdoors applications. The sensitivity of the sensor and processor combination is enabled through the latest technology, such as True Day/Night. In low light, this camera delivers clear video surveillance.

The integrated 2.8 – 12mm varifocal lens delivers an excellent field of view over longer distances providing the video resolution needed for most installations. With a sleek IP66-rated enclosure to protect against dust and water damage, this camera is perfect for parking lots and garages, loading docks and any exterior entrances where it is exposed to the elements.

The Illustra Standard Bullet Camera comes complete with built-in IR illuminators for clear video images in extreme low light or zero illumination conditions providing crisp, clear video quality both day and night. And, with an integrated mount, installation is a breeze.



Specifications

Operational			
Imager	1/2.8"SONY 2.43 mega low illumination CMOS		N TP, PPPOE, UPNP, SMTP
Video Compression	H.264/MJPEG		
Day/Night	Mechanical ICR		
Minimum Illumination	0Lux/F1.4(IR ON)		
IR Illumination	40-50M(3xIRIII IR Leds)		
Electronic ShutterA uto/Manual(1/25~1/10000)		
Lens	2.8-12mm		
ResolutionM ain-stream:D1/Q1080P(960*540)/HD720P/HD1080P 1-25/30fps Sub-stream: CIF/QCIF/D1/Q720P/QVGA/VGA 1-25/30fps		
Digital Noise Reduction	3D		
Wide Dynamic Range	Digital WDR		
Motion Detection4 Zones, Multi- Level Sensitivity		
Privacy Zones4 Zones		
Snapshoot.....	.S upport JPEG format		
Password Protection	Support		
Character Display	Support(Channel \Date)		
ONVIF	Yes		
Network			
EthernetR J45 10M/100M adaptive		
Support Protocol	TCP/IP,U DP, HTTP, DHCP, RTP/RTSP, DNS,		
Video Output			
Video Output	1.0 Vp-p, 75 ohm, composite, BNC output		
Configuration Management			
Web Browsing Requirements	Internet Explorer 9.0 or above		
Electrical			
Power	12V DC, PoE		
Power Consumption	< 15W		
Physical			
Dimension	88(W)*95.5(H)*262.82(L)mm		
Weight.....	820g		
Operating Temperature	-20°C ~ 55°C		
Operating Humidity	0%-90%, non-condensing		
Regulatory			
Emissions	FCC Part 15 C E: EN55022		
Immunity	CE: EN50130-4		
IP Rating	IP66		

Ordering Information

ModelID	Description
ISL02B1BNWIY	Illustra STD Compact Mini-Bullet, WDR, TDN, Outdoor Bullet, IR, Varifocal 2.8-12mm, 2MP

ILLUSTRAL CAMERA MODEL KEY											
ILLUSTRAL	SERIESM	ODELR	ESOLUTION	FORM FACTOR	LENSE	NVIRONMENT HOUSING	BUBBLE	COLOR	DAY/NIGHT/IRW	DR	OTHER
I	E = Essentials L = Lite		01 = 1MPB	= BulletN	= None	N = None	N = None	B = Black	C = Color OnlyN	= NoA	= Hardware Update
	F = Flex	P = Plus	02 = 2MPC	= Compact Dome	F = Fixed	A = Indoor NonVandal	C = Clear	G = Gray	I = TDN w/IR	T = Multi-Exposure (>60 Frames)	
	P = ProS	= Standard	03 = 3MPD	= Dome0	= 1.8-3mm	B = Outdoor NonVandal	S = Smoked	S = Silver	S = Soft Day/Night	Y = Yes	
	Q = Edge		05 = 5MPF	= Fisheye	1 = 2.8-12mm	I = Indoor Vandal		W = WhiteT	= TDN		
	S = Standard			M = Mini-Bullet2	= 3-9mm	O = Outdoor Vandal					
				P = PTZ	3 = 9-22mm						
				W = Wireless Cube	4 = 9-40mm						
				X = Box5	= 20x						
					6 = 30x						

Related Products



Approvals

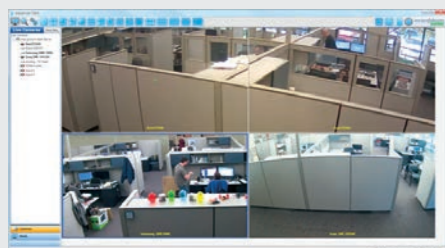


exacqVision Start

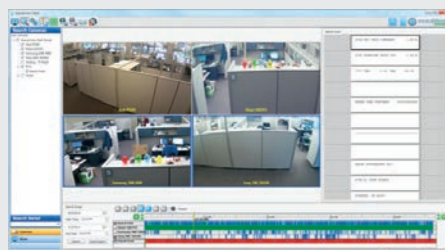
Low-cost, Intuitive VMS Software
for Stand-Alone Installations

exacqVision[®]

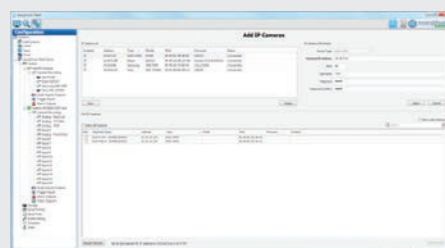
start



Easy-to-Use, Intuitive Interface



Powerful Search Capabilities



Easy Configuration

EasyConnect

Intuitive Video Management System (VMS) Features

- Monitor video and audio in real time
 - Onscreen display of motion and alarm events
 - Instant replay of video and audio events with exacqReplay
- Conduct investigations on recorded video and audio
 - Search across multiple cameras seamlessly
 - Powerful timeline and thumbnail search tools
 - Export video in open-standard video formats or as a self-contained player with tamper protection

Ease of Use and Flexibility

- Simple licensing
 - Freely distributed client, browser and mobile apps
 - Simple, per-camera server licenses with no base server fee
- Fast installation
 - Software installs in minutes and requires minimal configuration
 - EasyConnect automatically finds, assigns and addresses certain IP cameras to the network

Flexible Deployment

- Deploy server software on Windows and Linux
- Available on pre-configured exacqVision NVRs or install on third-party servers

View Video Anywhere with Free Client Software

- Access live and recorded video on Windows, Linux and Mac clients
- Use the free web service application with any modern browser
- Download the free Exacq Mobile app available for iOS, Android, Windows Phone 8

Expandable

- Connect up to 16 analog and 16 IP cameras to hybrid exacqVision servers
- Easily add additional IP cameras as needed
- High video throughput with minimal CPU and RAM requirements
- Easily upgradable to exacqVision Pro or Enterprise for future expansion
- Over 2,000 IP cameras and encoders from over 60 manufacturers

Constantly Expanding Functionality with Included Software Updates

- Get more video management features without replacing your entire VMS
- Includes 90 days free software updates (three years on exacqVision NVRs)

CLIENT WORKSTATION HARDWARE MINIMUM REQUIREMENTS	TYPICALLY USED FOR VIEWING 1-4 ANALOG CAMERAS
Processor	Intel® Celeron® G540 or higher
RAM	1 GB
Hard Drive	40 GB
Video	Intel HD (on-CPU GPU)
Operating Systems	Microsoft® Windows XP, Apple Macintosh OSX 10.6, Linux Ubuntu 8.04 or higher
VMS SERVER HARDWARE MINIMUM REQUIREMENTS	TYPICALLY LESS THAN 50 MBPS CAMERA TRAFFIC, 1-2 SIMULTANEOUS REMOVE CLIENTS
Processor	Intel® Atom® D525 1.8GHz or higher
RAM	2 GB
Hard Drive	60 GB (OS) + 250 GB (video) > 15 MBps non-sequential write
Operating System	Microsoft® Windows 7 Pro, Microsoft® Server 2003, Linux Ubuntu 10.04 or higher
NIC	1 Gbps
WEB BROWSER ACCESS	
Compatibility	Internet Explorer, Firefox, Safari, Opera, Chrome
MOBILE DEVICE ACCESS	
Compatibility	iOS, Android, Windows Phone 8

exacqVision Start VMS Software is available on exacqVision servers:

exacqVision[®] LC-Series



Related Products



exacqVision Hybrid & IP Camera Servers



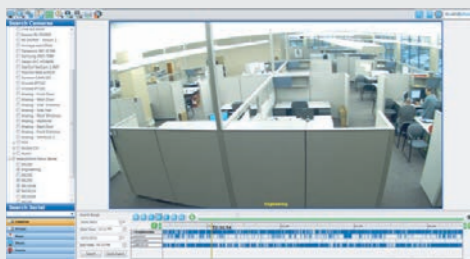
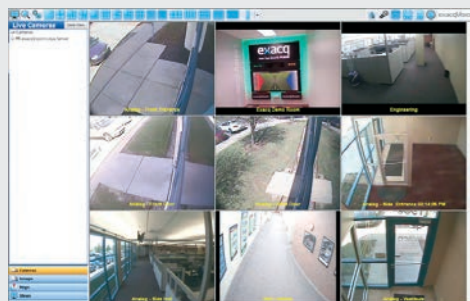
exacqVision Professional VMS Software

exacqVision Professional

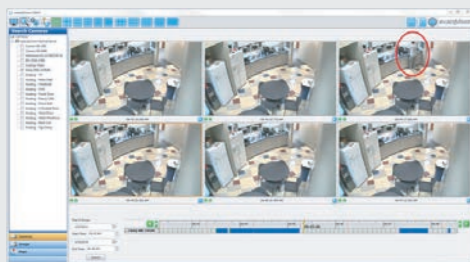
Powerful, Intuitive VMS Software

exacqVision[®]

professional



EasyConnect



- Powerful, Intuitive Video Management System (VMS) Features**
 - Effectively monitor video, audio and data in real time
 - Two-way audio
 - Interactive mapping
 - Data integration from retail and access control systems
 - Notification overlays
 - Reduce review time and conduct investigations seamlessly
 - Powerful thumbnail and timeline search capabilities
 - Export video in open-standard video format
 - Or export as a self-contained player with tamper protection
- Constantly Expanding Functionality with Included Software Updates**
 - Get more video management features without replacing your entire VMS
 - Includes 1 year free software updates (three years on exacqVision NVRs)
- Enterprise System Manager**
 - Option to add Enterprise System Manager, a centralized health monitoring and software updating system available on a PC or mobile device
- Ease of Use & Flexibility**
 - Requires little to no training
 - Software installs in minutes
 - EasyConnect automatically finds, assigns and addresses compatible IP cameras
 - Easily add IP camera licenses at any time
 - Per camera server licensing with no base server fee
- Flexible Deployment**
 - exacqVision Professional VMS software comes pre-configured and pre-installed on exacqVision out-of-the-box network video recorders
 - Installs on third-party servers
- View Video Anywhere with Free Client Software**
 - Select the interface that works best for you
 - Access live and recorded video on Windows, Linux or Mac PCs
 - Use the free web service application in any modern browser
 - Download the free Exacq Mobile app available for iOS, Android, Windows Phone 8
- Highly Scalable**
 - Single client connects to thousands of servers
 - Allows you to connect up to 64 analog and 128 IP cameras on exacqVision hybrid servers
 - Offers high video throughput with minimal CPU and RAM requirements necessary
- Build a Best-of-Breed Physical Security System**
 - Integrates with:
 - Over 2,000 IP cameras and encoders from more than 60 manufacturers
 - 20 access control systems
 - Video analytics solutions for license plate recognition, heat mapping and intrusion detection
 - Retail/Point-of-sale analytics

CLIENT WORKSTATION HARDWARE MINIMUM REQUIREMENTS	TYPICALLY USED FOR VIEWING 1-4 ANALOG CAMERAS
Processor	Intel® Celeron® G540 or higher
RAM	1 GB
Hard Drive	40 GB
Video	Intel HD (on-CPU GPU)
Operating Systems	Microsoft® Windows XP, Apple Macintosh OSX 10.6, Linux Ubuntu 8.04 or higher
VMS SERVER HARDWARE MINIMUM REQUIREMENTS	TYPICALLY LESS THAN 50 MBPS CAMERA TRAFFIC, 1-2 SIMULTANEOUS REMOVE CLIENTS
Processor	Intel® Atom® D525 1.8GHz or higher
RAM	2 GB
Hard Drive	60 GB (OS) + 250 GB (video) > 15 MBps non-sequential write
Operating System	Microsoft® Windows 7 Pro, Microsoft® Server 2003, Linux Ubuntu 10.04 or higher
NIC	1 Gbps
WEB BROWSER ACCESS	
Compatibility	Internet Explorer, Firefox, Safari, Opera, Chrome
MOBILE DEVICE ACCESS	
Compatibility	iOS, Android, Windows Phone 8

exacqVision Enterprise VMS Software is available on exacqVision servers:

exacqVision **Z-Series**



exacqVision **A-Series**



exacqVision **ELP**



exacqVision **LC-Series**



Related Products



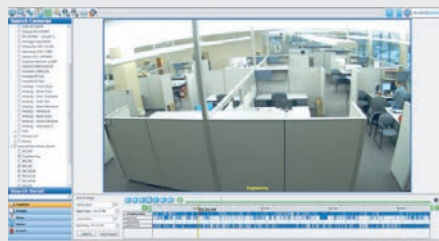
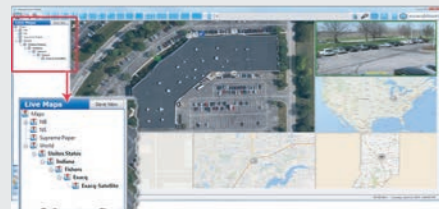
exacqVision Hybrid & IP Camera Servers



exacqVision Enterprise VMS Software

exacqVision Enterprise Large-Scale, Intuitive VMS Software

exacqVision[®] enterprise



EasyConnect



• Large-Scale, Intuitive Video Management System (VMS) Features

- Effectively monitor video, audio and data in real time
 - Two-way audio
 - Interactive and multi-level mapping
 - Data integration from retail and access control systems
 - Notification overlays
- Conduct investigations on recorded video, audio and data
- VideoPush video wall sends video to another exacqVision user or public view monitor
- Constantly expand functionality with included regular software updates

• Multi-Server Administration

- Single-screen administration across multiple systems:
 - Cameras: Globally configure and monitor camera settings across the enterprise
 - Storage: Monitor storage health, configure S-Series storage connections
 - Users: Simultaneous administration of all users on multiple servers
 - LDAP/Active Directory Integration: standardized network administration
 - E-mail and Text Notifications: Quickly configure notification rules on all servers

• Enterprise System Manager

- Option to add Enterprise System Manager, a centralized health monitoring and software updating system available on a PC or mobile device

• Multi-Level Mapping

- Create hierarchical nesting of maps for faster camera and device navigation

• Ease of Use & Flexibility

- Requires little to no training
- Software installs in minutes
- EasyConnect automatically finds, assigns and addresses compatible IP cameras
- Easily add IP licenses at any time
- Per camera server licensing with no base server fee

• View Video Anywhere with Free Client Software

- Access live and recorded video on Windows, Linux or Mac PCs
- Use the free web service application with any modern browser
- Download the free exacq Mobile app available for iOS, Android, Windows Phone 8

• Highly Scalable

- Single client connects to thousands of servers
- Allows you to connect up to 64 analog and 128 IP cameras on exacqVision hybrid servers
- Offers high video throughput with minimal CPU and RAM requirements necessary

• Build a Best-of-Breed Physical Security System

- Integrates with:
 - Over 2,000 IP cameras and encoders from over 60 manufacturers
 - 20 access control systems
 - Video analytics solutions for LPR, heat mapping and intrusion detection
 - Retail/point-of-sale analytics

• Constantly Expanding Functionality with Included Software Updates

- Get more video management features without replacing your entire VMS
- Includes 1 year free software updates (three years on exacqVision NVRs)

CLIENT WORKSTATION MINIMUM HARDWARE RE- QUIREMENTS	TYPICALLY FOR VIEWING 1-4 ANALOG CAMERAS
Processor	Intel® Celeron® G540 or higher
RAM	1 GB
Hard Drive	40 GB
Video	Intel HD (on-CPU GPU)
Operating Systems	Microsoft® Windows XP, server 2003 (minimum), Ubuntu 8.04 or higher
VMS SERVER HARDWARE MINIMUM REQUIREMENTS	TYPICALLY LESS THAN 50 MBPS CAMERA TRAFFIC, 1-2 SIMULTANEOUS REMOVE CLIENTS
Processor	Intel® Atom D525 1.8GHz or higher
RAM	2 GB
Hard Drive	60 GB (OS) + 250 GB (video) > 15 MBps non-sequential write
Operating System	Microsoft® Windows 7 Pro, Microsoft® Server 2003, Ubuntu 8.04 or higher
NIC	1 Gbps
WEB BROWSER ACCESS	
Compatibility	Internet Explorer, Firefox, Safari, Opera, Chrome
MOBILE DEVICE ACCESS	
Compatibility	iOS, Android, Windows Phone 8

exacqVision Enterprise VMS
Software is available on exacqVision servers:

exacqVision Z-Series



exacqVision A-Series



exacqVision ELP



Related Products



exacqVision Hybrid & IP Camera Servers



exacqVision Enterprise System Manager (ESM)



exacqVision Virtual

exacqVision Edge & Edge+ Full-Featured VMS Software Running on an IP Camera



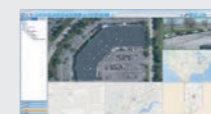
- Perfect IP Video Surveillance Solution**
 - Full-featured VMS software installed directly on a compatible camera
 - Easy and cost-effective way to deploy high-definition IP video
 - View 10 exacqVision Edge cameras or over 1,000 exacqVision Edge+ simultaneously with included client
- Ideal exacqVision Edge/Edge+ Applications**
 - Small Systems-** Save server and installation costs on small video surveillance systems
 - Fast Deployment-** Completely pre-configure video system prior to installation; no server installation required.
 - High Reliability-** No single server failure stops all video recording
 - Unreliable Networks-** Ideal in environments with unreliable wireless or WAN connectivity - camera records even when the network is down
 - Independent Recording-** Ideal to monitor remote server rooms independently of building surveillance recording
 - Low Density Locations-** Ideal for remote locations with low camera counts
- View Live and Recorded Video Anywhere**
 - Included client software runs on Windows/Linux/Mac computers
 - Install free web service software on a PC for web browser and mobile app access
 - Powerful thumbnail and timeline search tools
 - Onscreen display of motion and alarm events
 - Instant replay of video and audio events with exacqReplay
 - Export video in open-standard video formats or as a self-contained player with tamper protection
- System Continues to Meet Your Growing Needs**
 - Get powerful video management features today, and add more tomorrow through our included, rapid software releases
 - Add new exacqVision Edge/Edge+ cameras as needed
 - Scalable as part of a full exacqVision recorder solution
 - Easy to upgrade to exacqVision Edge+ for more than 10 simultaneous cameras, powerful enterprise features and network storage options
- exacqVision Edge+ Features:**
 - Archiving and extended storage
 - Multi-streaming
 - Multiple camera export
 - Bookmarking and case management
 - Third-party integrations
 - Enterprise Management
 - Single and nested mapping
 - Custom user groups
 - Remote system monitoring with email notifications
 - Point-of-sale and ATM search
 - SmartSearch
 - Event Linking and notifications
 - Camera groups
 - Audit trail
 - Two-way audio
 - Time lapse recording

SYSTEM	EDGE	EDGE+
Maximum simultaneous cameras per client	10	1,000
Free Windows, Linux and Mac clients	✓	✓
Browser-based viewing of live/stored video	with installation of free PC web service software	with installation of free PC web service software
Tablet/smartphone based viewing of live/stored video	with installation of free PC web service software on a separate computer	with installation of free PC web service software on a separate computer
Client-side dewarp of fisheye/panoramic cameras	camera dependent	camera dependent
Client bandwidth throttling	✓	✓
Pre-post alarm recording	✓	✓
Soft Triggers	✓	✓
Per-camera min/max retention		✓
Audit trail		✓
Custom user groups		✓
Third-party integrations (e.g. access control)		✓
Email notification for system health events		✓
exacqVision surveillance keyboard support		✓
Enterprise camera management		✓
LIVE VIEW	EDGE	EDGE+
View cameras on multiple monitors	✓	✓
PTZ control and presets	✓	✓
Digital PTZ control and presets	✓	✓
Motion and alarm indication	✓	✓
Event linking on video, serial and health events		✓
Camera groups		✓
Multi-streaming		✓
Event notifications		✓
Maps		✓
Two-way audio		✓
Hierarchical maps for fast camera navigation		✓
SEARCH, PLAYBACK, EXPORT & ARCHIVE	EDGE	EDGE+
exacqReplay instant replay	✓	✓
Thumbnail & timeline event search	✓	✓
Multi-camera playback	✓	✓
Export to DVD	✓	✓
Export to .AVI, .MOV or .EXE file	✓	✓
exacqReplay instant replay		✓
Multiple camera export		✓
Time-lapse recording		✓
Extended storage		✓
Archiving		✓
Smart search		✓
Bookmarking		✓
Case management		✓

Related Products



exacqVision NVR



exacqVision VMS Software



Exacq Mobile App



exacqVision Keyboard

exacqVision Server & Hardware Cheatsheet

(effective October 2014)

	LC-SeriesE		LP-Series				A-Series						Z-Series						
	IPSH	ybrid	IPSH		ybrid		IPS		Hybrid				IPSH			ybrid			
ANALOG	Form Factor	LC-IPS	LC-Hybrid	ELP	ELPRE	LP	ELPRD	esktop2	U	4U	Desktop2	U4	U2	U3	U4	U2	U4	U	
	Analog Inputs		8/16			8/16	8/16				8/16/32	16/32	16/32/48/64				16 looping/32	16 looping/32 looping/48/64	
	Frame Rate	25/30 FPS per input				25/30 FPS per input						25/30 FPS per input						25/30 FPS per input	
	Alarm Inputs	16	84			TTL	4 TTL				8 TTL1	6 TTL1	6 TTL1				6 TTL	16/16/8/8 TTL	
	Alarm Outputs	4 TTL, 1 Relay	3 TTL, 1 Relay			2 TTL, 1 Relay	2 TTL, 1 Relay				3 TTL & 1 Relay	15 TTL & 1 Relay	15 TTL & 1 Relay1				5 TTL & 1 Relay	15 TTL & 1 Relay	
	Analog Outputs		11				1				1/2/22	/2	2/2				22	/2/4/4	
	Audio Inputs		8/16			44					444						16	16	
IP	Max IP Cameras	16		24				64						128					
	Included IP Camera Licenses	4 (Start)4						4		4 or 8		88		8					
	Alarm Inputs / Outputs													Inputs: 4 / Outputs: 1 TTL & 1 Relay	Inputs: 8 / Outputs: 3 TTL & 1 Relay				
SERVER & GENERAL	Pre-Loaded VMS Software	Start / Professional (Optional)P		rofessional / Enterprise (Optional)				Professional / Enterprise (Optional)P						rofessional / Enterprise (Optional)					
	Typical Video Storage Rate (Mbps)	1001	00	2002	00	2002	00	250 (Windows) 300 (Linux)	300 (Windows) 450 (Linux)	350 (Windows) 550 (Linux)	250 (Windows) 300 (Linux)	300 (Windows) 450 (Linux)	350 (Windows) 550 (Linux)	400 (Windows) 800 (Linux)	600 (Windows) 1000 (Linux)	800 (Windows) 1200 (Linux)	400 (Windows) 800 (Linux)	800 (Windows) 1200 (Linux)	
	Local Client Display Rate (FPS)	1801	80	1801	80	180	180	Windows: 450 (Standard CPU) /750 (i5)/1200 (i7) - Linux: 300 (Standard CPU)/500 (i5)/700 (i7)						Windows: 1800 - Linux: 1200					
	Max Storage	4 TB	4 TB	4 TB	8 TB	4 TB	8 TB	8 TB	12 TB	32 TB8	TB1	2 TB	32 TB3	2 TB	64 TB8	0 TB	32 TB8	0 TB	
	Removable HD				YesY		es			YesY			es	YesY	es	YesY	es	Yes	
	RAID Configuration									5 (Optional)5			(Optional)5		6656				
	Operating System	Ubuntu Linux		Ubuntu Linux				Windows 7 64-bit (Standard) / Windows 2008 R2 or Ubuntu Linux (Optional)W						indows 7 64-bit (Standard) / Windows 2012 R2 or Ubuntu Linux 12.04 (Optional)					
	Operating System Location	HD	HD	32 GB SSD				32 GB SSD Linux or HD Windows (Standard) 64 GB SSD (Optional)						60 GB SSD					
	Monitor Output	DVI-D, VGA		1 DVI-I + 1 DVI-D + 1 Display Port (max 2 simultaneous monitors)1				DVI-I + 1 DVI-D + 1 Display Port (max 2 simultaneous monitors)1						DVI-I + 1 HDMI + 1 Display Port (max 2 simultaneous monitors)					
	NIC	1x1 Gbps		2x1 Gbps				2x1 Gbps (Standard) / 4x1 Gbps (Optional)2			x1 Gbps2	x1 Gbps2	x1 Gbps	2x1 Gbps (Standard) / 2x10 Gbps SPF+ (Optional)					
	Redundant Power Supply									(Optional)(Optional)D	ual Hot-Swap					
Serial			11		1	111			1111				1 RS 485	1 RS4851	RS4851	RS4851	RS485		
Audio Outputs (Server)			11		1	111			111				11111						

S-Series - Networked Video Storage for exacqVision Recorders			
Form Factor	Professional	Enterprise 2U	Enterprise 4U
Archiving - Max Video Recorders	16	32	64
Archiving - Max Data Rate (Mbps)	750 (single NIC) / 1000 (dual NIC bonding)		1500 (single NIC) / 2000 (dual NIC bonding)
Archiving - Designed for ESM		<input checked="" type="checkbox"/> <input checked="" type="checkbox"/>	
Ext. Storage - Max Video Recorders	83	26	4
Ext. Storage - Max Data Rate (Mbps)	250	350	500
Ext. Storage - Designed for ESM		<input checked="" type="checkbox"/> <input checked="" type="checkbox"/>	
Ext. Storage - Minimum Video Recorder OS	Microsoft Server 2008, Windows 7, Linux Ubuntu 10.04		
Pre-loaded VMS Software	exacqVision Storage Professional	exacqVision Storage Enterprise	
ESM Monitoring Compatible		<input checked="" type="checkbox"/> <input checked="" type="checkbox"/>	
Storage Maximum (Internal)	32 TB3	2 TB RAID 5	80 TB RAID 6
NIC	2x1 Gbps	3x1 Gbps (2 for storage, 1 for management) or 4x1 Gbps (optional)	
Operating System	Ubuntu Linux12.04		
Redundant Power Supply	Dual Hot Swap		



What you get with an exacqVision purpose-built server:

- 3-year Warranty
- 3 years Software Updates
- Factory installed VMS

Software specifications are subject to change without notice.		Start	Professional	Enterprise
System	Max Cameras Per Server	16 Analog / 16 IP	64 Analog / 128 IP	64 Analog / 128 IP
	Max Server Connections Per Client	1	512 (client) / 16 (web browser client)	512 (client) / 16 (web browser client)
	Windows & Linux Server Compatibility	☑	☑	☑
	Free Windows, Linux & Mac Clients	☑	☑	☑
	Browser-Based Viewing of Live/Stored Events	☑	☑	☑
	Compatible with Free Exacq Mobile App	☑	☑	☑
	EasyConnect Auto-Detect/Connect to Compatible IP Cameras	☑	☑	☑
	Fisheye/Panoramic Lens Support (Live & Recorded)	☑	☑	☑
	Client Bandwidth Throttling	☑	☑	☑
	Pre-Post Alarm Recording	☑	☑	☑
	Soft Triggers	☑	☑	☑
	Time-Lapse Recording		☑	☑
	Extended Storage		☑	☑
	Archiving		☑	☑
	Per-Camera Min/Max Retention		☑	☑
	Audit Trail		☑	☑
	Custom User Groups		☑	☑
	Third-Party Integrations		☑	☑
	Smart Search		☑	☑
	Email Notification for System Health Events		☑	☑
	exacqVision Surveillance Keyboard Support		☑	☑
	ESM Failover			☑
	Enterprise Camera Management			☑
	Enterprise Server Monitoring			☑
	Enterprise User Management			☑
LDAP/Active Directory			☑	
Compatible with exacqVision Virtual Appliance			☑	
Software Updates Included (exacqVision Servers)	3 years	3 years	3 years	
Software Updates Included (3rd Party Servers)	90 days	1 year	1 year	
Live View	View Cameras on Multiple Monitors	☑	☑	☑
	PTZ Control & Presets	☑	☑	☑
	Digital PTZ Control & Presets	☑	☑	☑
	Motion & Alarm Indication	☑	☑	☑
	Event Linking on Discreet Inputs	☑	☑	☑
	Event Linking on Video, Serial & Health Events		☑	☑
	Event-Driven & Time-Lapse Video Switching		☑	☑
	Camera Groups		☑	☑
	Multi-Streaming		☑	☑
	Event Notifications		☑	☑
	Two-Way Audio		☑	☑
	Maps		☑	☑
	VideoPush Video Wall			☑
	Hierarchical Maps for Fast Camera Navigation			☑
	System	exacqReplay Instant Replay	☑	☑
Thumbnail & Timeline Event Search		☑	☑	☑
POS & ATM Serial Text Search		☑	☑	☑
Multi-Camera Playback		☑	☑	☑
Export to DVD		☑	☑	☑
Export to .AVI or .EXE File		☑	☑	☑
Bookmarking			☑	☑
Multiple Camera Export			☑	☑
Case Management				☑



Enterprise System Manager (ESM)
Maximize the uptime of your exacqVision Enterprise recorders with ESM. Access via browser on PC or mobile device



USB I/O Module
Add configurable trigger inputs, outputs and serial connections to expand your surveillance system.



Surveillance Keyboard
Pre-configured for quick, easy installation and advanced control of live and recorded video from the exacqVision client.



Exacq Mobile
Free app provides live & recorded video from multiple systems simultaneously (iOS/Android/Windows Phone 8)



exacqVision Edge
Install exacqVision Edge directly onto compatible IP cameras for a complete, full-featured VMS without a server.



exacqVision Virtual
Pre-configured VMware Ready virtual appliance supported on systems with exacqVision Enterprise licenses.



E-Series Encoders
Single and 4-channel cost-effective encoders to convert analog cameras to IP to utilize exacqVision IP camera servers.

VideoEdge NVR

Easy to Use, Fast Results Highly Secure



Features That Make a Difference:

- **NEW!** Simple web-browser interface
- **NEW!** Save investigation time with analytic searches by filtering with color
- **NEW!** Crowd formation event alerts security as small crowds form becoming big problems
- **NEW!** Queue length monitoring helps improve customer experience and optimize operations in stores, casinos, stadiums, etc.
- Enterprise functionality – LDAP, SNMP, and multicast support
- VideoEdge Go mobile app
- Unique video stream management offers superior quality video in constrained environments
- Embedded video analytics
- Real-time system health monitoring
- Failover redundancy for worry-free system operation
- POS text integration helps identify fraud and cashier proficiency
- HTTPS and SSL security hardening protects against cyber-attacks and other threats
- Supports ONVIF Profile S
- IP camera auto discovery

Intuitive Family of Clients

VideoEdge Client, VideoEdge Go Mobile app, victor Unified Client, and our new web client, victor Web LT, to view, play back and search video from anywhere with network access. See our victor Web LT data sheet for details.

Advanced Network Streaming Industry Best Dynamic Video Stream Management¹:

Receive multiple streams tailored to viewing conditions, resulting in superior video with significantly reduced network bandwidth, CPU resources, and memory usage.

Multicast Support:

Multicast video streams further reduce the bandwidth required for streaming high-quality video.

Incredibly Fast Throughput:

2U server features 800 Mbps of video throughput (400 Mbps to disc/400 Mbps to clients) supporting up to 128 cameras at the maximum frame rate, providing the highest number of cameras per NVR without sacrificing bandwidth or quality.

Fast, Superior Results

Sophisticated Embedded Analytics:
Transform video into business intelligence to better analyze operations, maximize revenue potential, and increase situational awareness.

New capabilities:

include color filtering, crowd detection, and queue length monitoring. Read our Video Intelligence and Analytics data sheet.

Smart Search:

Smart Search uses motion data collected with video while it is recorded, versus running time-consuming searches against archived video.

Highly Secure

⁽¹⁾ Feature available only when used with victor Unified Client

“FISMA Ready”:

VideoEdge can be configured to meet NIST SP 800-53 requirements. Read our White Paper.

With a customized version of SUSE Linux that is installed as JeOS (Just enough Operating System), VideoEdge delivers high performance while maintaining network security.

Ideal for Enterprise Applications

Scalable Solution:
Scalable from a single NVR to a large, multi-site architecture; easily deploy any number of cameras, adding licenses at any time.

LDAP Support:

Automate user rights and privileges through Windows Active Directory by linking user profiles to the video management system.

VMS Failover, External Archiving and RAID Options:

Ensures worry-free system operations and secure data, even in hosted environments. Should you lose power or system communication, all functionalities can be transitioned seamlessly to the secondary system, including recorded video. Archiving can be scheduled to download to most any type of storage system.

Easy Set up and Management

Easy Configuration:
VideoEdge features an intuitive interface and auto-populating templates.

Camera Auto Discovery:

Quickly find cameras on your network, and automatically assign IP addresses.

Try exacqVision Now!
Connect to our demo servers or install the server software to your own computer and IP cameras with a full-featured free trial license. Try the exacqVision web browser client or the free Exacq Mobile app.
www.exacq.com/tryexacqvision

Diverse Form Factors

Regardless of form factor, VideoEdge recorders use the same software engine ensuring that whether you need a small appliance or large server, you'll get the same superior functionality.

Software Only

An intuitive software-only solution that supports all SUSE Linux-certified hardware. OS included.

Micro NVR

Intuitive and compact. Ideal for small applications or large distributed environments with satellite sites. The embedded PoE switch eliminates the need for dedicated power and network infrastructure.

Desktop NVR

Rated at 200 Mbps of video throughput (100 Mbps to disc) with the ability to record 32 1080p HD cameras. This form factor includes video storage up to 3.5 terabytes and supports external storage through a USB 3.0 or iSCSI connection.

2U NVR

At 400 Mbps of video throughput (200 Mbps to disc), supports up to 64 cameras. Offers redundant power supply and RAID controllers in all configurations.

Rack-mount NVR

Features 800 Mbps of video throughput (400 Mbps to disc) supporting up to 128 cameras.

Camera Auto Discovery

Quickly find cameras on your network and automate the assignment of IP addresses. What used to take hours now just takes minutes.

Flexible Client Options

VideoEdge provides myriad client options with superior WAN performance.

VideoEdge Go Mobile App

Full-featured video surveillance mobile app compatible with all iOS 8 devices including the iPhone, iPad, and iPod Touch.

Local Client¹

Embedded with each NVR. Ideal for customers using VideoEdge as part of a single site, single recorder solution.

Victor Web Client

Intuitive, web-based interface to view, play back and share video from VideoEdge recorders. View and search video from anywhere with Internet access.

Victor Unified Client

A powerful option in scalable tiers that manages live/recorded video from VideoEdge NVRs as well as Intellex or ADTVR recorders.

Specifications

Hardware Requirements for Purpose Built IP Network Video Recorders

	Desktop	2U NVR	Rack-Mount Server
Operating System	SUSE Linux JeOS	SUSE Linux JeOS	SUSE Linux JeOS
Processor	4th Generation core i3	4th Generation core i7	Intel Xeon E5-2620
Memory	8 GB	8 GB	8 GB
OS Drive	500 GB Enterprise SATA	500 GB Enterprise SATA	2 x RAID1 500 GB Nearline SAD HD
Network Interface	2 x 1 Gigabit Ethernet NICs	4 x 1 Gigabit Ethernet NICs	4 x 1 Gigabit Ethernet NICs
RAID Controller	None	Yes ²	Yes ³
Video Storage	0, 2, 4 TB	0, 8, 16, 24 TB ⁴	6-36 TB ⁴
External Storage	USB, iSCSI	USB, iSCSI	iSCSI
Power Supply	300 W	Redundant 549 W	Redundant 495 W
Redundant Power Supply	No	Yes	Yes
Max BTU	700	1000	1908
Dimensions	39.62 x 10.9 x 34.9 cm (15.5 x 4.3 x 13.75 in)	48.3 x 8.6 x 53 cm (19 x 3.375 x 21 in)	48.2 x 8.7 x 68.4 cm (19 x 3.43 x 27 in)
Max Total Cameras	32	64	128
Max Digital Monitors	1	1	1
Max Analog Monitors	1	2	0
Local Client	Yes	Yes	No
Monitor Interface	1 x DVI, 1 x VGA, 1 x HDMI	1 x DVI, 1 x VGA	1 x VGA
Video Recording (write to disc)	100 Mbps	200 Mbps	400 Mbps
Video Playback (to client)	100 Mbps	200 Mbps	400 Mbps
Chassis	Desktop	Rack-Mount	Rack-Mount
Regulatory	FCC Part 15, Class A; CE: EN55022, Class A; CE: EN6100-3-2; 3-3; ICES-003/NMB-003, Class A; AS/NZS CISPR22, Class A Immunity CE: EN50130-4 CE: EN55024 Safety UL 60950-1 (2nd Ed); IEC/EN 60950-1; CSA C22.2 60950-1		

(3) Available with all units, pre-configured with 16 and 20 TB only

(4) Not available on 6 TB unit

(5) Raw disk space

Hardware Requirements for Commercial Off-the-Shelf (COTS) Servers

	Up to 32 Cameras	Up to 64 Cameras
Operating System	Not Required	Not Required
Processor	Core i3 2100, 3.1 GHz	Intel Xeon E5-2620, 2.00GHz
Memory	8 GB, 1333 MHz	8 GB, 1333 MHz
OS Drive	500GB with 16 M Cache Memory 7200 RPM	500GB with 16 M Cache Memory 7200 RPM
Network Interface	Minimum: Two 1 Gb NICs, Recommended: Three	Minimum: Two 1 Gb NICs, Recommended: Three
RAID Controller	As Needed	As Needed
Video Storage	As Needed	As Needed
External Storage	iSCSI, USB ⁶ , eSATA	iSCSI, USB ⁶ , eSATA
Video Recording (write to disc)	Max 50 Mbps	Max 300 Mbps
Video Playback (to client)	Max 50 Mbps	Max 300 Mbps

²Not available with rack-mount server.

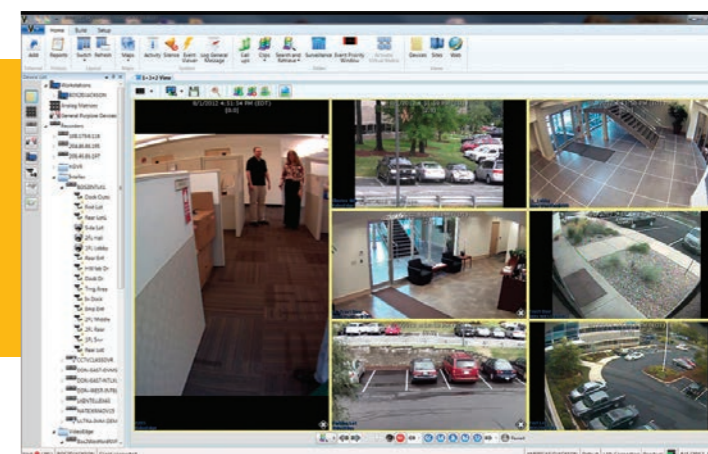
(6) USB3 port only

Ordering Information

Model Numbers	Description
VideoEdge NVR Add-on	
ADVEC01	1 IP camera license
ADVEVAC01	1 video analytics license
Software Only	
ADVVSWM	VideoEdge and victor application server (VAS) with 4 camera licenses and 2 victor client licenses
ADVESWADD	One additional VideoEdge NVR Server software with 4 camera licenses (requires ADVVSWM)
Desktop NVR with 4 IP Camera Licenses	
ADVED00N0N4B	no internal storage
ADVED02N0N4B	2 TB storage
ADVED04N0N4B	4 TB storage
2U NVR with 4 IP Camera Licenses	
ADVER00R5N2B	0 TB storage
ADVER08R5N2B	8 TB storage
ADVER12R5N2B	12 TB storage
ADVER20R5N2B	20 TB storage
2U Rack-mount Server with 4 IP Camera Licenses	
ADVER06N0D1D	6 TB of usable video storage
ADVER12R5D1D	9 TB of usable RAID5 storage
ADVER18R5D1D	15 TB of usable RAID5 storage
ADVER24R5D1D	21 TB of usable RAID5 storage
ADVER30R5D1D	27 TB of usable RAID5 storage
ADVER36R5D1D	33 TB of usable RAID5 storage

victor

Unified Management Software



Features That Make a Difference:

- **NEW for v4.8!** Scheduled Clip Download
- **NEW!** Surveillance Window Recording
- **NEW!** Camera View Layout Designer
- Incident reporting for streamlined case management with **NEW** Clip Builder and Image Editor
- **NEW!** 360° fisheye camera client-side dewarping available for VideoEdge and exacqVision recorders
- Enterprise event management
- Intelligent camera stream management
- Cybersecurity protection
- Lightning-fast Smart Searches
- Device Auto Discovery
- Enterprise-wide Health Monitoring

End-to-end Surveillance and Monitoring

A secure, highly scalable platform, victor Unified is an ideal choice for active surveillance environments. Offering single-point alarm and event management¹, victor can easily and seamlessly integrate video with alarms for access control, intrusion, fire, and more.

Tailored to the Enterprise Ecosystem
victor can scale from a single-site video surveillance system to a global, multisite enterprise with thousands of recorders using our MAS/SAS architecture. Device Auto Discovery automatically finds associated security devices², saving hours of set-up time. Real-time, system-wide health monitoring reports on device status.

Intelligent Stream Management
Through the use of intelligent algorithms, victor can automatically select the best camera stream and resolution for system users. Operators are able to respond and review live or recorded video quickly with the most efficient bandwidth and CPU usage.

Streamline Incident Management
victor's built-in incident manager allows operators to consolidate all event information in a single, convenient package. Videos, still images, report data, charts, user notes and external files can be bundled for easy export.

Cybersecurity Protection
Flexible and customizable, victor can be implemented to meet the most demanding requirements for cyber hardening. Cybersecurity is not an afterthought. Sophisticated technologies, including advanced encryption and logical access control, are built right in.

Real-time Enterprise Event Management
victor's intuitive user interface allows security operation center operators to handle and

¹Available with victor Unified Client
²VideoEdge, exacqVision, Intellex, and ADTVR recorders, and illustra cameras

review all alarms from virtually anywhere. Monitor and replay events as needed. Create and save surveillance views tailored to specific needs with Custom Layout Designer.

Faster Investigations
Video searches are faster than ever before. Smart Search uses metadata to sort through days of video in just seconds, while Thumbnail Search displays video via images vs. lists for instant identification. victor's intuitive timeline control quickly locates videos for playback via time-based criteria. Case investigation times can be reduced by eliminating unnecessary video information.

Quick, Simple Reporting Tools
For easier report generation, simultaneously record all streaming video from a selected layout into a single clip file with new Surveillance Window Recording. Quickly build and edit video clips using split, cut, crop, delete and add tools with the unique, new Clip Builder. Or export the clip for playback in Image Editor.

Maximize Precious Resources
victor's new Scheduled Clip Download feature can schedule CPU-intensive downloads for off-hours when energy costs are lower to free operator time for more important tasks.

Command Center Collaboration
For the ultimate in 24/7 video surveillance, add the victor Command Center. Enable video walls, operator-to-operator-sharing and advanced event priority monitoring.

Related Products



victor Unified Client



RAID Storage



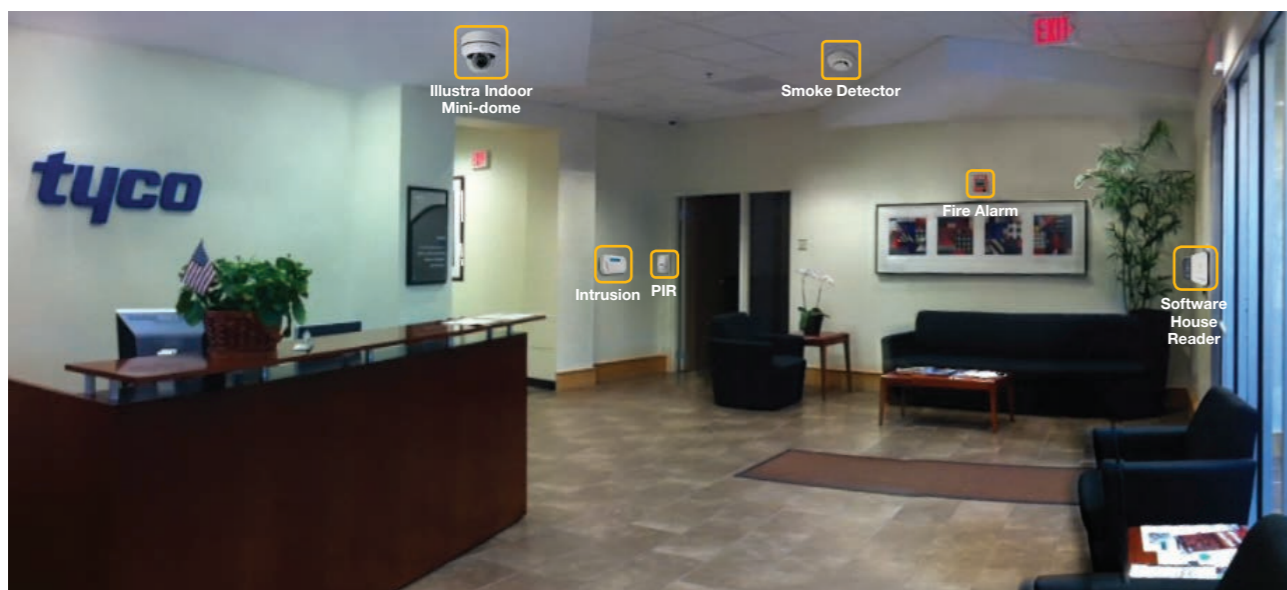
IP Cameras



Software House C•CURE 9000

Approvals





victor's Object Association allows you to link your security system together.

Supports 19 languages:

- Arabic
- Czech
- Danish
- Dutch
- English
- French
- German
- Hungarian
- Italian
- Japanese
- Korean
- Polish
- Portuguese (Brazilian)
- Russian
- Simplified Chinese
- Spanish
- Swedish
- Traditional Chinese
- Turkish

victor Features by Recorder						
Network Video Recorders	VideoEdge	Intellex	ADTVR	HDVR	exacqVision	3rd party
Max # of recorders w/victor Express	30	100	n/a	n/a	n/a	n/a
Max # of recorders w/victor Professional	300	700	100	300	300	100
Max # of recorders w/victor Enterprise	6,000	14,000	600	6,000	6,000	600
Live View, Playback and Export	✓	✓	✓	✓	✓	✓
Smart Search	✓	✓				
Streaming Playback	✓	✓				
360° (Fisheye) Camera Dewarping	✓				✓	
Secure HTTPS Connection	✓					
victor Web	✓					
Analytics	✓					
Bandwidth Management	✓					
Transcoding	✓					

victor Express Client						
Platform Type	Operating System	Max # Monitor(s)	CPU	Min Memory (GB)	Max Streams	Display Adapters [Qty]
Basic Desktop	Windows 7 (64-bit) Windows 8 (64-bit)	Single	Intel Core i3	4	36	Intel HD Graphics 4400 (Integrated)
Standard Desktop	Windows 7 (64-bit) Windows 8 (64-bit)	Dual	Intel Core i5	4	72	NVIDIA Quadro K620

victor Client (Professional or Enterprise)						
Platform Type	Operating System	Max # Monitor(s)	CPU	Min Memory (GB)	Max Streams	Display Adapters [Qty]
Basic Desktop	Windows 7 (64-bit) Windows 8 (64-bit)	Single	Intel Core i3	4	36	Intel HD Graphics 4400 (Integrated)
Standard Desktop	Windows 7 (64-bit) Windows 8 (64-bit)	Dual	Intel Core i5	4	72	NVIDIA Quadro K620
Performance Workstation	Windows 7 (64-bit) Windows 8 (64-bit)	Dual or Quad	Intel Xeon E3	4 ³	72	NVIDIA Quadro K620 (Quad requires two display adapters)
High Performance Workstation	Windows 7 (64-bit) Windows 8 (64-bit)	Quad	Intel Xeon E5	4 ³	144	Two NVIDIA Quadro K620

victor Application Server (Professional or Enterprise)				
Workstation Configuration	Operating System	CPU Type	RAM (GB)	Database (dependent on system)
victor Application Server (standalone)	Windows 7 SP1 (64-bit) Windows Server 2008 R2	Intel Core i5 3550	8	SQL Express 2008 R2, SQL Express 2012 SQL Standard and Enterprise 2012
Unified victor/C•CURE 9000	Windows Server 2008 R2 Standard and Enterprise (64-bit) 2012 R	Intel Xeon Quad Core	16	SQL Server 2008 R2 Standard and Enterprise (64-bit) 2012

Virtual victor Application Server						
Virtualization Platforms	Operating System	# of CPU Cores	CPU Reservations	RAM (GB)	Storage Requirements	Database (dependent on system)
VMWare ESXi 5.1, Microsoft Hyper-V	Windows Server 2008 R2 Standard and Enterprise (64-bit) 2012 R	4	7 GHz	16 ⁴	1TB	SQL Express 2008 R2, SQL Express 2012 SQL Standard and Enterprise 2012

Model Numbers	Description
ADVSEXPRES	victor Express for 1 victor Client workstation
ADVSMC01	victor Professional, victor Application Server, 1 concurrent victor Unified Client connection (Base)
ADVSMC02	victor Professional, victor Application Server, 2 concurrent victor Unified Client connections (Base)
ADVSMC05	victor Professional, victor Application Server, 5 concurrent victor Unified Client connections (Base)
ADVSMC10	victor Professional, victor Application Server, 10 concurrent victor Unified Client connections (Base)
ADVSMC25	victor Professional, victor Application Server, 25 concurrent victor Unified Client connections (Base)
ADVSMC50	victor Professional, victor Application Server, 50 concurrent victor Unified Client connections (Base)
ADVSMC01ADD	victor Professional, 1 additional concurrent victor Unified Client connection
ADVSMC05ADD	victor Professional, 5 additional concurrent victor Unified Client connections
ADVCC01ADD	victor Command Center Agent add on (Add 1 agent to victor Command Center)
ADVCC05ADD	victor Command Center Agent and add on (5 victor agent licenses to existing victor customer)

NOTE: In an installation of fewer than 100 cameras, victor Application Server and victor unified client can run on the same workstation.

⁹ Extra memory is required if workstation is running unified victor/C•CURE 9000, 16 GB RAM is required
¹⁰If using virtual unified victor/C•CURE 9000, 24 GB RAM is required

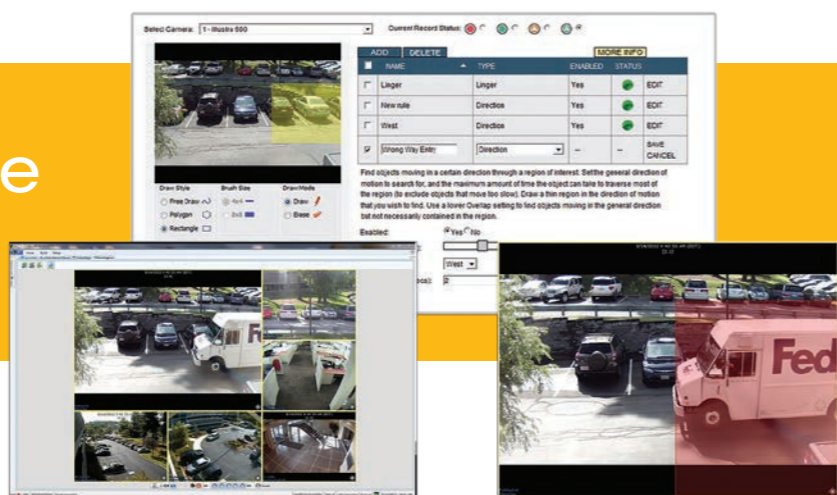
Related Products



Approvals



Video Intelligence and Analytics



Features That Make a Difference:

- **NEW** with v4.7! Face recognition feature immediately alerts operators if specified persons of interest are in view
- **NEW!** Face verification feature identifies access card misuse
- Real-time video analytics transform data into video intelligence
- Search days of video in seconds to speed forensic investigations
- Automated alarms increase situational Awareness
- Powerful embedded VideoEdge NVR analytics offer perimeter protection, crowd formation, queue length monitoring, direction, dwell, linger, enter and exit object counting, objects abandoned or removed (e.g. unattended package, museum mode, shelf sweep, stock replenishment)
- Enhance security by quickly identifying suspicious behavior and movements
- Analyze foot traffic patterns and consumer shopping activity with heat mapping
- Save investigation time with analytic searches using color as a filter
- Ideal for security applications as well as improving customer service and measuring the success of promotions
- Flexible licensing promotes ease of configuration, use and maintenance

Fast, Powerful Searches

VideoEdge NVRs coupled with victor software provide video intelligence and analytics that greatly improve the efficiency of security officers and loss prevention (LP) investigators.

Superior optimization and simple filtering tools make it quick and easy to deal with even the most complex investigations. Narrow or broaden search results simply by changing the values of the search criteria. For example, you can easily expand a search of a doorway from three to five feet to capture activity in the perimeter.

With victor's "jump to next" feature, you can quickly move from one search result to another with just the click of a mouse.

Incredibly Fast Results

Manage alarms/events and run searches in seconds. Real-time analysis of incoming video streams from IP or analog cameras creates post incident alarms and metadata for lightning fast searches.

Simple Rule Set Up and Management

Our analytics are easy to configure. Through VideoEdge, select the cameras you'd like to analyze and allow your recorder to collect real world metadata for particular views. Simply push a button to create a rule. You can store multiple alarms per camera, providing total coverage for a variety of time ranges and conditions.

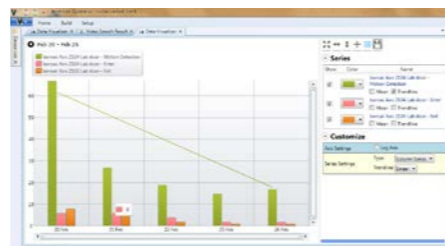
Transform Data into Business Intelligence

Highly efficient, optimized algorithms enable truly scalable embedded video intelligence across the entire VideoEdge portfolio – from desktop to server deployments. victor event management allows you to easily provide detailed instructions, associate video, and automate security actions for greater situational awareness.

Using victor's investigator mode, you can automatically time sync additional cameras to build an entire picture of movements across sites. Better secure your facility by analyzing a variety of activities – all from one single server.

Data Visualizer Dashboard

Convert VideoEdge metadata into information that can be viewed in a graph or chart. Visually plot graphs or charts to view information such as conversion rates, people counting, traffic flow, and more.



Simple Analytics Licensing

A Video Analytics license is required per camera and can be reallocated from one camera to another as needs change.

Breadth of Analytics

Real-time alarms inform your security team of growing crowds, long lines, suspicious behavior, wrong way entry, perimeter protection, shelf sweep, stock replenishment, no customer present, and more.

NEW! Face Recognition

The face recognition feature can help spot pre-determined individuals (e.g. criminals, terminated employees, VIPs) and alert operators, who can then take immediate action.

NEW! Face Verification

Used with victor Unified and C•Cure 9000 access control, the face verification feature can automatically determine when an access card is used by an unauthorized person.

Color Filtering

Home in on objects or people by searching video based on color attributes. For example, you can quickly find a red truck or a person wearing a green sweater.

Crowd Formation

Select a region of interest, and when a crowd of a certain size forms, an alert can be raised. You can improve responsiveness to "flash rob" and other multiple offender crimes.

Queue Length Monitoring

Use this rule to sound an alarm when a line gets too long. Or analyze the data to pinpoint times during the day when lines are empty, short, medium or long to better manage cashier lines, toll lanes, etc.

Direction

Get visibility to critical situations such as motorists driving the wrong way on a freeway, or vehicles crossing the security checkpoint in the wrong direction. Retailers can use this feature to determine the best placement for displays.

Dwell

Retailers can automate data collection that measures how much time consumers spend in specific areas to better gauge the impact of marketing activities such as signage and in-store promotions.

Linger

This rule can be used in many settings to determine if people are staying in certain areas for suspicious/non-permissible periods of time (e.g. bank lobbies).

Enter and Exit

Count people or objects entering or leaving a specific area at different times. Generate reports and trigger alarms as needed.

Object Detection

This multi-purpose role can be used for monitoring perimeters, zones, tripwires, etc. Ensure that hallways in buildings and entryways in stadiums remain clear of obstacles.

Object Abandoned/Removed

Abandoned objects can be a huge concern, particularly in places such as airports, train stations, or other high-traffic areas. This rule can detect changes in a scene or region of interest and immediately alert authorities. The analytic can also spot activity such as a thief installing a skimmer on an ATM, an unauthorized person removing artwork from a display, or a vandal writing graffiti on a wall. Retailers can easily identify shelf sweep or the subtle trick of removing a handful of items over a span of time to avoid suspicion.

Heat Mapping

Retailers and other busy applications can monitor foot traffic patterns. A color scale from red to blue shows "hot" areas where people stop and linger and "cold" areas with little foot traffic. Create a heat map over specific times on different days to compare activity.

Ordering Information

Model Numbers	Description
ADVEVAC01	VideoEdge Add-on, 1 Video Analytics License (includes all Video Intelligence rules), per camera
ADVEFRC01	VideoEdge Add-on, 1 Face Recognition Camera License, up to 1000 faces per NVR database
ADVEFVC01	VideoEdge Add-on, 1 Face Verification Camera License, only used with victor Unified and C-Cure 9000

Related Products



A series of horizontal dotted lines for writing, spanning the width of the page.





Tyco Security Products

C-602, RMZ Centennial, Kundalahalli Main Road, Bengaluru 560 048, India

Tel: +91 97396 08889

Email: info-tspindia@tycoint.com

www.tycosecurityproducts.com www.exacq.com www.americandynamics.net www.illustraflex.com