

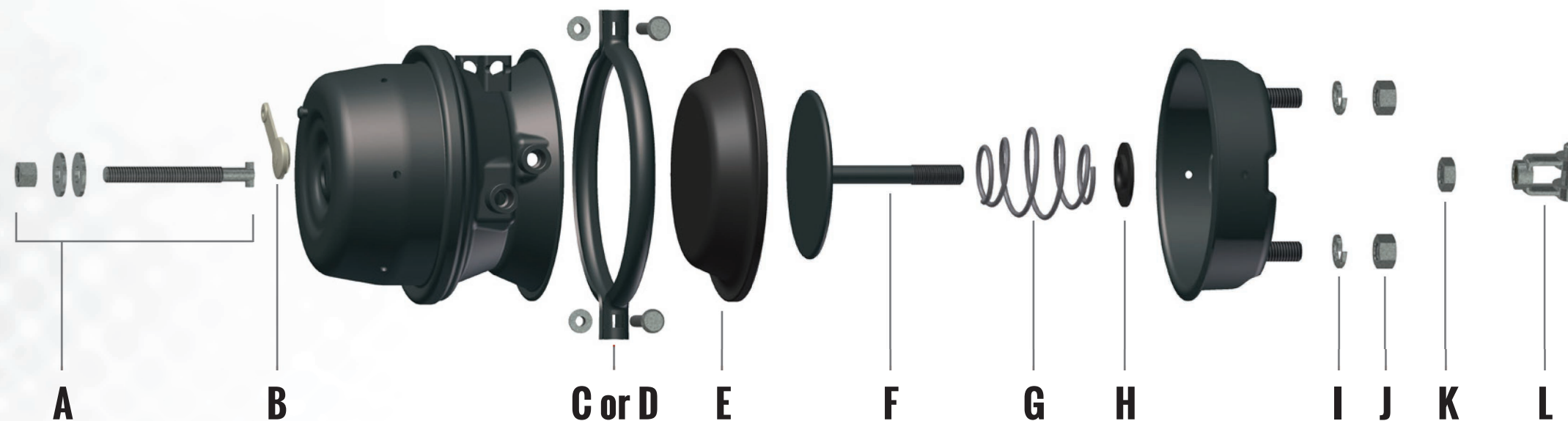


BETTER			BEST IN CLASS			DESCRIPTION	B DIMENSION	CAGED
omni brake	omnibrake vct	omnibrake TSE-REX	ultra life+	ultralife+ vct	ultralife+ TSE-REX			
2024TN2-C						T-2024 2.5" stroke + clevis	7.75"	N
2424TN2-C						T-2424 2.5" stroke + clevis	7.75"	N
2430TN2-C						T-2430 2.5" stroke + clevis	7.85"	N
2430TN3-C						T-2430 3.0" stroke + clevis	7.25"	N
3030TN2		3030TVR2 + K575	3030TN2ULP-C		3030TVR2ULP + K575	T-3030 2.5" stroke	7.85"	N
3030TN2-C		3030TVR2 + K575	3030TN2ULP-C		3030TVR2ULP + K575	T-3030 2.5" stroke + clevis	7.85"	N
3030TN3		3030TVR3 + K575			3030TVR3ULP + K575	T-3030 3.0" stroke	7.35"	N
3030TN3-C		3030TVR3 + K575	3030TN3ULP-C		3030TVR3ULP + K575	T-3030 3.0" stroke + clevis	7.35"	N
			3036TN2ULP-C			T-3036 2.5" stroke + clevis	7.80"	N
			3036TN2ULP-80100			T-3036 3.0" stroke + clevis	7.30"	N
			3636TN3ULP-80102			T-3636 3.0" stroke + clevis	7.25"	N
				3036TVW3ULP-80114		T-3036 3" stroke welded clevis 2.25 "A" dim.	2.25"	N
	3030SV2K			3030SV2ULPK		VCT T-3030 2.5" stroke single Kit + Box	-	Y
	3030SV3K			3030SV3ULPK		VCT T-3030 3.0" stroke single Kit + Box	-	Y
3030TN3-2390			3030TN3ULP-80053			T-3030 3.0" stroke + clevis	5.75"	Y
3030TN2-HNTRX-C	3030TV2-HNTRX	3030TVR2 + K975	3030TN2ULP-HNTRX-C	3030TV2ULP-HNTRX	3030TVR2ULP + K975	T-3030 2.5" stroke + long rod + clevis	9.75"	N
3030TN3-HNTRX-C	3030TV3-HNTRX	3030TVR3 + K975	3030TN3ULP-HNTRX-C	3030TV3ULP-HNTRX	3030TVR3ULP + K975	T-3030 3.0" stroke + long rod + clevis	9.75"	N
3030TL2-2401						T-3030 2.5" stroke	5.75"	Y
3030TL3-3265						T-3030 3.0" stroke	5.75"	Y
3030TL2-2412						T-3030 2.5" stroke + long rod	9.75"	Y
3030TL3-2517						T-3030 3.0" stroke + long rod	9.75"	Y
3030TLW2-4019			3030TLW2ULP-80045			T-3030 2.5" stroke + welded clevis	6.80"	Y
3030TLW3-4020			3030TLW3ULP-80036			T-3030 3" stroke + welded clevis	6.80"	Y
			3030TL2ULP-80026			T-3030 2.5" stroke + clevis	5.75"	Y
			3030TL3ULP-80011			T-3030 3.0" stroke + clevis	5.75"	Y
			3030TL2ULP-80031			T-3030 2.5" stroke + long rod + clevis	9.75"	Y
			3030TL3ULP-80017			T-3030 3.0" stroke + long rod + clevis	9.75"	Y
3030TNW2-2998			3030TNW2ULP-80104			T-3030 2.5" stroke + welded clevis	2.25"	Y
3030TNW3-2273	3030TVW3-4200	3030TVR3 + K225-130	3030TNW3ULP-80060	3030TVW3ULP-80085	3030TVR3ULP + K225-130	T-3030 3.0" stroke + welded clevis	2.25"	Y
3030TNW2-3612	replaced by		3030TNW2ULP-80105			T-3030 2.5" stroke + welded clevis	2.87"	Y
3030TNW3-3611			3030TNW3ULP-80061			T-3030 3.0" stroke + welded clevis	2.87"	Y
3030TNW2-3613	replaced by	3030TVR2 + K680-130	3030TNW2ULP-80106			T-3030 2.5" stroke + welded clevis	6.80"	Y
3030TNW3-3615	replaced by	3030TVR3 + K680-130	3030TNW3ULP-80062			T-3030 3.0" stroke + welded clevis	6.80"	Y
3030TNW2-3614	replaced by	3030TVR2 + K110-130	3030TNW2ULP-80068			T-3030 2.5" stroke + welded clevis	11.00"	Y
3030TNW3-3616		3030TVR3 + K110-130	3030TNW3ULP-80107			T-3030 3.0" stroke + welded clevis	11.00"	Y
30RPC2						T-30 Remote 2.5" stroke	6.57"	N
30RPC3						T-30 Remote 3.0" stroke	6.20"	N
12SCN0-C						T-12 1.75" stroke + clevis	8.55"	N
16SCN1-C						T-16 2.25" stroke + clevis	8.05"	N
20SCN1-C						T-20 2.25" stroke + clevis	8.00"	N
20SCN2-C						T-20 2.5" stroke + clevis	7.75"	N
24SCN2-C						T-24 2.5" stroke + clevis	7.75"	N
24SCN3-C						T-24 3.0" stroke + clevis	7.15"	N
30SCN2-C						T-30 2.5" stroke + clevis	7.75"	N
30SCN2-HNTRX-C						T-30 2.5" stroke + long rod + clevis	9.75"	N
30SCN3						T-30 3.0" stroke + clevis	7.30"	N
36SCN3-C						T-36 3.0" stroke + clevis	7.20"	N
30SCLW2-4087						T-30 2.5" stroke + welded clevis	6.80"	N
30SCLW3-4082						T-30 3.0" stroke + welded clevis	6.80"	N
20SCLW2			20SCLW2ULP			T-20 2.5" stroke + welded clevis	2.25"	N
24SCLW2						T-24 2.5" stroke + welded clevis	2.25"	N
24SCLW3			24SCLW3ULP			T-24 3.0" stroke + welded clevis	2.25"	N
			30SCNW3ULP			T-30 3.0" stroke + welded clevis	2.25"	N
1616HTLD2-3627						For 1616 Piston Or 1624 Double Diaphragm	-	Y
1816HTND2-3669			1816HTND2UL-4312			For 1816 Piston Or 1824 Double Diaphragm	-	Y
2016HTND2-3710			2016HTND2UL-4313			For 2016 Piston Or 2024 Double Diaphragm	-	Y
1824HTND2-3628						For 1824 Piston Or 1830 Double Diaphragm	-	Y
2024HTND2-3626						For 2024 Piston Or 2030 Double Diaphragm	-	Y
2424HTND2-3629						For 2424 Piston Or 2430 Double Diaphragm	-	Y
18HSCND2-4026						T-18 Disc 2.5" stroke	-	Y
20HSCND2-3630						T-20 Disc 2.5" stroke	-	Y
22HSCND2-3631						T-22 Disc 2.5" stroke	-	Y
24HSCND2-3632						T-24 Disc 2.5" stroke	-	Y

PART NUMBERS	DESCRIPTION	TYPICAL APPLICATIONS	WORKS WITH THE FOLLOWING AUTO-SLACK BRANDS & MODELS*	BOX COLOR CODE
PUSH ROD KITS - THREADED INCLUDES JAM NUT INSTALLED				
K575	5.75" B dimension threaded Rod	Standard 5" trailer axle	All	Gold
K631	6.31" B dimension threaded Rod	SAF axle		Silver
K706	7.06" B dimension threaded Rod	Meritor large diameter axle		Purple
K975	9.75" B dimension threaded Rod	Intraax/Vantraax		Green
K150	15.0" B dimension threaded Rod	Universal fully threaded		None
PUSH ROD KITS - FIXED CLEVIS INCLUDES STAINLESS STEEL PINS AND COTTERS INSTALLED				
K225-130	2.25" A dimension Fixed Clevis with 1.3" pin spacing	Truck welded clevis	1, 3, 4, 6, 8	None
K680-102	6.80" A dimension Fixed Clevis with 1.02 pin spacing	Standard 5" Axle Gunite Slack	1, 2	Orange
K680-130	6.80" A dimension Fixed Clevis with 1.3" pin spacing	Standard 5" Axle	1, 3, 4, 6, 8	Yellow
K680-138	6.80" A dimension Fixed Clevis with 1.38" pin spacing	Standard 5" trailer axle Meritor, Stemco slack	1, 5, 7	White
K110-130	11.0" A dimension Fixed Clevis with 1.3" pin spacing	Intraax/Vantraax	1, 3, 4, 6, 8	Brown
K110-138	11.0" A dimension Fixed Clevis with 1.38" pin spacing	Intraax/Vantraax Meritor, Stemco slack	1, 5, 7	Blue

***Auto-Slack Notes**

- | | |
|--|---------------------------------------|
| 1 TSE/Webb/MEI/Haldex (0.5" pin) | 5 Meritor 1.38" pin spacing (Trailer) |
| 2 Gunite 1000 series 1.02" pin spacing | 6 Stemco 1.3" pin spacing |
| 3 Gunite 2000 series 1.3" pin spacing | 7 Stemco 1.38" pin spacing |
| 4 Meritor 1.3" pin spacing (Truck) | 8 Bendix Versajust |



SERVICE PARTS	TYPE									
	9	12	16	20	20 LS	24	24 LS	30	30 LS	36
STROKE	1.75"	1.75"	2.25"	2.25"	2.5"	2.5"	3.0"	2.5"	3.0"	3.0"
A- Release Bolt Assembly	N/A	N/A	N/A	K1003015-PL	K1003015-PL	K1003015-PL	K1001058-PL	K1003015-PL	K1001058-PL	K1003615
B- Dust Cap	N/A	N/A	N/A	K1173007	K1173007	K1173007	K1173007	K1173007	K1173007	K1173007
C- Clamp Assembly	N/A	N/A	N/A	K1002013	K1002013	K1002413	K1002413	K1343013-EC	K1343013-EC	N/A
D-	N/A	N/A	N/A	N/A	N/A	N/A	N/A	N/A	N/A	N/A
E- Diaphragm	N/A	K100120	K101160	K100200	K100200	K101240	K113240	K1003000	K113300	N/A
F- Push Rod	N/A	N/A	N/A	N/A	N/A	N/A	N/A	K2-1003011-15.15	K2-1003011-15.65	N/A
G- Return Spring	N/A	N/A	N/A	N/A	N/A	N/A	N/A	N/A	N/A	N/A
H- Push Rod Plastic Guide	N/A	N/A	N/A	N/A	N/A	N/A	N/A	N/A	N/A	N/A
I- Mounting Lock Washer	N/A	N/A	N/A	N/A	N/A	N/A	N/A	N/A	N/A	N/A
J- Mounting Nut	N/A	N/A	N/A	N/A	N/A	N/A	N/A	N/A	N/A	N/A
K- Pushrod Jam Nut	N/A	N/A	N/A	N/A	N/A	N/A	N/A	N/A	N/A	N/A
L- Clevis Assembly	K1103023	K1103023	K1103023	K1103023	K1103023	K1103023	K1103023	K1103023	K1103023	K1103023

DESCRIPTION	PART NUMBER	DESCRIPTION	PART NUMBER	DESCRIPTION	PART NUMBER
Clevis Pin 1/2" Stainless Steel	K1103023-2S	Clevis Pin 5/8"	K1013025	Clevis Assembly 5/8" Rod + 1/2" SS Pin	K1013023S
Clevis Pin 1/4" Stainless Steel	K1153023-3S	Clevis Assembly 5/8" Rod + 5/8" Pin	K2243023-PL	Dust Boot Assembly Heavy Duty	K1011051
Clevis Pin 1/2"	K1003025	Clevis Assembly 5/8" Rod + 14mm Pin (Metric)	K2103023	Drain Hole Plugs	K1001130



2310 Industrial Drive S.W. Cullman, Alabama 35055