

StarTech.com
Hard-to-find made easy®

2 Port VGA USB KVM Switch with DDM and Cables 4 Port VGA USB KVM Switch with DDM and Cables

SV231USBDDM

SV431USBDDM



*actual product may vary from photos

DE: Bedienungsanleitung - de.startech.com

FR: Guide de l'utilisateur - fr.startech.com

ES: Guía del usuario - es.startech.com

IT: Guida per l'uso - it.startech.com

NL: Gebruiksaanwijzing - nl.startech.com

PT: Guia do usuário - pt.startech.com

For the most up-to-date information, please visit: www.startech.com

FCC Compliance Statement

This equipment has been tested and found to comply with the limits for a Class A digital device, pursuant to part 15 of the FCC Rules. These limits are designed to provide reasonable protection against harmful interference in a residential installation. This equipment generates, uses and can radiate radio frequency energy and, if not installed and used in accordance with the instructions, may cause harmful interference to radio communications. However, there is no guarantee that interference will not occur in a particular installation. If this equipment does cause harmful interference to radio or television reception, which can be determined by turning the equipment off and on, the user is encouraged to try to correct the interference by one or more of the following measures:

- Reorient or relocate the receiving antenna.
- Increase the separation between the equipment and receiver.
- Connect the equipment into an outlet on a circuit different from that to which the receiver is connected.
- Consult the dealer or an experienced radio/TV technician for help.

Use of Trademarks, Registered Trademarks, and other Protected Names and Symbols

This manual may make reference to trademarks, registered trademarks, and other protected names and/or symbols of third-party companies not related in any way to StarTech.com. Where they occur these references are for illustrative purposes only and do not represent an endorsement of a product or service by StarTech.com, or an endorsement of the product(s) to which this manual applies by the third-party company in question. Regardless of any direct acknowledgement elsewhere in the body of this document, StarTech.com hereby acknowledges that all trademarks, registered trademarks, service marks, and other protected names and/or symbols contained in this manual and related documents are the property of their respective holders.

Table of Contents

Introduction	1
Packaging Contents	1
Product Overview	1
Front View (SV231USBDDM)	1
Rear View	1
Front View (SV431USBDDM)	2
Rear View	2
LED Indicators.....	3
Reset Button.....	3
Installation	3
Operation	4
Specifications	6
SV231USBDDM	6
SV431USBDDM	7
Technical Support	8
Warranty Information	8

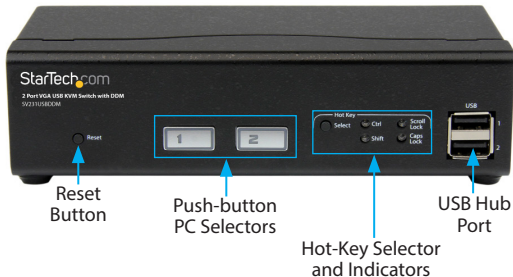
Introduction

Packaging Contents

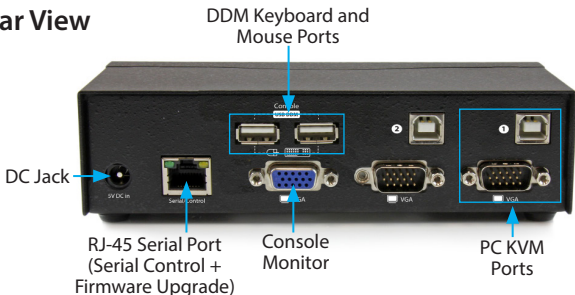
- 1 x KVM Switch
- 2x 6ft VGA USB KVM Cables (4x 6ft VGA USB KVM Cables for SV431USBDDM)
- 1 x Firmware Upgrade Cable
- 1 x Universal Power Adapter (NA/UK/EU)
- 1 x Instruction Manual

Product Overview

Front View (SV231USBDDM)



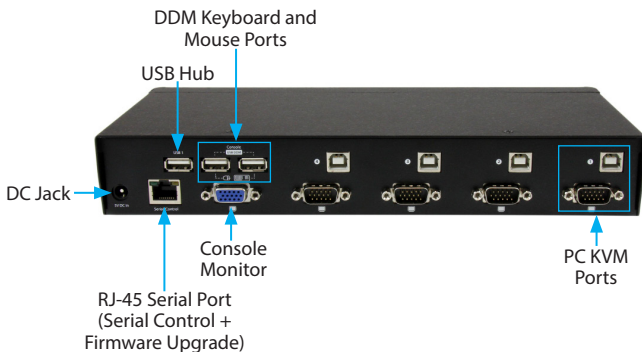
Rear View



Front View (SV431USBDDM)



Rear View



LED Indicators

PC Selection Indicators

Green = PC Connected

Amber = Port selected, PC connected

Red = Port selected, no PC connected

NOTE: The LED will flash quickly while the KVM is mapping a newly connected device

Hot-key Selection Indicator

Blue = Currently selected hot-key

Not-lit = hot-key has been disabled

Reset Button

The reset button causes all USB ports to reset and settings to reload. The KVM will re-connect all devices (including DDM port and USB hub port) and PC ports like an initial power on.

Installation

1. Connect the external power adapter from a wall outlet to the power connector on the rear panel of the KVM switch.
2. Connect a monitor into the Console's video connector, then plug your USB keyboard and mouse into the DDM USB keyboard and mouse ports on the KVM switch.

NOTE: The DDM ports on the KVM are designed to be used with USB HID (Human Input Device) only.

3. Use the included KVM cables to connect both video and USB, to one of the KVM's PC ports.
4. Repeat Step 3 for each PC you wish to use on the KVM.

OPTIONAL: Connect any other USB peripherals you wish to share between the connected computers/devices to either the USB Hub port on the Console side, and/or the front panel USB port.

Operation

Switching between computers can be accomplished using:

- Front-panel push-buttons
- Keyboard hot-keys. The following chart indicates the hot-keys that are available.

Note: To connect with the serial device, you need to operate at 115200.

• Default Hot Key = **Ctrl**

Hot-key + Hot-key + **K** + New Hot-key

Hot-key and Functions

Hot-key + Hot-key + **1** (~ **8**) → Switch to Port #1 (~ Port#8)

Hot-key + Hot-key + **A** (~ **F**) → Switch to Port #A (~ Port#F)

Hot-key + Hot-key + **Z** → Turn switching confirmation
buzzer sound on/off

• Default = buzzer sound off

Hot-key + Hot-key + **S** **N** → Turn on Auto Channel Scan

• **S** = last setting interval, default = 5 seconds

• **N** (**1** ~ **5**) = 5, 8, 15, 20, 30 seconds

• Turn off Auto Channel Scan by pressing any key

Assign USB port commands

Hot-key + Hot-key + **H** + **1** + **P** (**1** ~ **8** , **A** ~ **F**) → Assign USB #1 for
a certain port use only

Hot-key + Hot-key + **H** + **2** + **P** (**1** ~ **4**) → Assign USB #2 for
a certain port use only

Hot-key + Hot-key + **H** + **1** + **P** (**1** ~ **8** , **A** ~ **F**) → Assign USB #1 for
a certain port use only

Optional Functions

Hot-key + Hot-key + **V** + **1** → Select clone EDID data

Hot-key + Hot-key + **V** + **2** → Select default EDID data

• Mouse Scroll-wheel Button

Hot-key + Hot-key + **M** + **1** → Enable scroll-wheel button click switching

Hot-key + Hot-key + **M** + **0** → Disable (default is off)

Change the Serial Device Settings to the following:

Speed (baud)	115200
Data bits	8
Stop bits	1
Parity	None
Flow control	None

- RJ-45 serial port – control commands issued from communication applications such as Hyper Terminal:

Serial Command	Function	Screen Response
chX (X= 1,2,3...)	SYNC jump to console channel X	CHX
bzon	Buzzer ON	bzon
bzoff	Buzzer OFF	bzoff
ctrl	Hotkey change to value "Ctrl"	CTRL
shift	Hotkey change to value "Shift"	SHIFT
scroll	Hotkey change to value "Scroll Lock"	SCROLL
caps	Hotkey change to value "Caps Lock"	CAPS

Specifications

SV231USBDDM

KVM Ports	2
Console Connectors	1 x VGA (15 pin; High Density D-Sub) Female 2 x USB A (4 pin) Female (w/ DDM)
Computer Connectors (per port)	1 x VGA (15 pin; High Density D-Sub) Female 1 x USB B Female
Other Interfaces	2 x USB A Female
Switching Modes	Pushbutton, Hot-key
Maximum Resolution	1920x1440
Audio Support	No
On Screen Display	No
Cascadable	No
Rack-Mountable	No
Enclosure Type	Steel
Power Adapter	5V 2A
Operating Temperature	0°C to 60°C (32°F to 140°F)
Storage Temperature	-30°C to 70°C (-22°F to 158°F)
Humidity	0~80% RH Non-Condensing
Dimensions (LxWxH)	165 x 76 x 44 mm
Weight	530g

SV431USBDDM

KVM Ports	4
Console Connectors	1 x VGA (15 pin; High Density D-Sub) Female 2 x USB A (4 pin) Female (w/ DDM)
Computer Connectors (per port)	1 x VGA (15 pin; High Density D-Sub) Female 1 x USB B Female
Other Interfaces	2 x USB A Female
Switching Modes	Pushbutton, Hot-key
Maximum Resolution	1920x1440
Audio Support	No
On Screen Display	No
Cascadable	No
Rack-Mountable	No
Enclosure Type	Steel
Power Adapter	5V 2A
Operating Temperature	0°C to 60°C (32°F to 140°F)
Storage Temperature	-30°C to 70°C (-22°F to 158°F)
Humidity	0~80% RH Non-Condensing
Dimensions (LxWxH)	275 x 130 x 46 mm
Weight	1160g

Technical Support

StarTech.com's lifetime technical support is an integral part of our commitment to provide industry-leading solutions. If you ever need help with your product, visit www.startech.com/support and access our comprehensive selection of online tools, documentation, and downloads.

For the latest drivers/software, please visit www.startech.com/downloads

Warranty Information

This product is backed by a two year warranty.

In addition, StarTech.com warrants its products against defects in materials and workmanship for the periods noted, following the initial date of purchase. During this period, the products may be returned for repair, or replacement with equivalent products at our discretion. The warranty covers parts and labor costs only. StarTech.com does not warrant its products from defects or damages arising from misuse, abuse, alteration, or normal wear and tear.

Limitation of Liability

In no event shall the liability of StarTech.com Ltd. and StarTech.com USA LLP (or their officers, directors, employees or agents) for any damages (whether direct or indirect, special, punitive, incidental, consequential, or otherwise), loss of profits, loss of business, or any pecuniary loss, arising out of or related to the use of the product exceed the actual price paid for the product. Some states do not allow the exclusion or limitation of incidental or consequential damages. If such laws apply, the limitations or exclusions contained in this statement may not apply to you.

Hard-to-find made easy. At StarTech.com, that isn't a slogan. It's a promise.

StarTech.com is your one-stop source for every connectivity part you need. From the latest technology to legacy products — and all the parts that bridge the old and new — we can help you find the parts that connect your solutions.

We make it easy to locate the parts, and we quickly deliver them wherever they need to go. Just talk to one of our tech advisors or visit our website. You'll be connected to the products you need in no time.

Visit www.startech.com for complete information on all StarTech.com products and to access exclusive resources and time-saving tools.

StarTech.com is an ISO 9001 Registered manufacturer of connectivity and technology parts. StarTech.com was founded in 1985 and has operations in the United States, Canada, the United Kingdom and Taiwan servicing a worldwide market.