



Tomorrow never waits

## ZTE ZXR10 5260 Series Switch Data Sheet

Updated: Sep 13, 2017

# ZTE



Tomorrow never waits



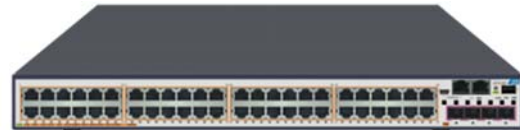
## Product Overview

The ZXR10 5260 Series switch is 1RU height all Gigabit L2 Stackable Switch for Enterprise campus network access and 1000Mbps to the desktop scenarios. It provides up to 52 interfaces (48 GE+ 4 10GE) and various interfaces combinations. With VSC2.0 (Virtual Switch Cluster), it delivers improved resilience and flexibility. The ZXR10 5260 Series switch supports full IEEE 802.3af Power over Ethernet Plus (PoE) and IEEE 802.3at Power over Ethernet Plus (PoE+) to fulfill more enterprise access scenarios. Meanwhile, zero-touch provisioning, IEEE 802.3az Energy Efficient Ethernet (EEE) make the network not only easy for maintenance but also low consumption.

The ZXR10 5260 Series switch offers following switch products:



5260-28PD-H



5260-52PD-H

**5260-28PD-H:** 24 Ethernet 10/100/1000M RJ45 electrical ports (POE/POE+), 4 10GE SFP+ optical ports.

**5260-52PD-H:** 48 Ethernet 10/100/1000M RJ45 electrical ports (POE/POE+), 4 10GE SFP+ optical ports.

## Product Features

- **Smart VLAN Support**

- The ZXR10 5260 Series switch not only supports 1:1 VLAN mapping, but also supports N: 1 VLAN mapping. VLAN aggregation can be implemented at the access layer to increase the efficiency of VLAN utilization.
- The ZXR10 5260 Series switch also supports QinQ and flexible selective QinQ. Network administrator can distinguish user and service effectively and apply different strategies thereafter.
- The ZXR10 5260 Series switch supports Voice VLAN, thus enabling the voice traffic to enjoy high priority.

**ZTE**



Tomorrow never waits



- **Powerful Service Bearing Capability**

- By supporting rich L2 switching functions and RIP/OSPF protocols and low latency forwarding, the ZXR10 5260 Series switch can bear multi services including WLAN, Internet, Voice, Video and other data services.
- The ZXR10 5260 Series switch fully supports L2 multicast, including IGMP snooping, Filtering, Proxy and Fast leave, MVR (Multicast VLAN Registration) to facilitate the deployments of these services.
- Support general channel and privilege channel to manage IPTV users. With IPTV control implemented, operators can apply different CAC (channel access control) rules for users with channel packages.
- The ZXR10 5260 Series switch supports IPv6 features to facilitate the deployment of IPv6 services, such as MLD Snooping, DHCP v6 Snooping.

- **Innovative VSC2.0 (Virtual Switch Cluster) Technology**

- Support VSC2.0 (Virtual Switch Cluster) which enhancing cluster system capacity and port density, simplifies network topology and management.
- Real time hot-standby information synchronization between master and backup master to ensure seamless switchover against network failures, enhancing the network reliability.
- Stacking bandwidth between the VSC switches can be up to 80Gbps, which can solve the bandwidth bottleneck of VSC and deliver customers a real-time non-blocking VSC system.
- Master and slave in VSC works in 1+N redundancy mode, MAD (Multi-active Detect) technology is used to detect and avoid dual master in VSC system when failure happens. With real-time hot standby and seamless switchover, it brings customer a more flexible VSC network.

**ZTE**



Tomorrow never waits



- **Flexible POE/POE+**

- Support POE and POE+ complying with the 802.3at and 802.3af standard to provide power supply for remote devices (including IP phones, WLAN APs, and network cameras) through twisted-pair cables.
- Support forcible power supply and could supply power for PD equipment that not compatible with 802.3af and 802.3at standards if needed.
- Support configuring the POE time range. During the time that does not need power supply, power supply can be stopped automatically to save energy.
- Support PD port power detection and negotiating POE power through LLDP-MED. If the actual power is greater than the PSE-distributed power, stops providing power supply and alarms will be generated and sent to the OAM center.
- Support displaying the PSE power supply status and PD power supply status, such as whether power supply is provided, power, level, and temperature.
- Supports stopping providing power supply for new PoE ports if the entire-device PoE power is exceeded.
- Supports over-temperature protection recovery.
- Supports port priorities. Power supply is preferentially provided for a port with a higher priority.

- **Enhanced Reliability, Multi-Dimensional Security**

- The ZXR10 5260 Series switch supports ERPS, which goes in line with RFC3619 and ITU.T G.8032 standard, can recover the system from any link or node fault.
- Support Smart Group and LACP (Link Aggregation Control Protocol), which can help guarantee the reliability of the link connection. Also support smart group cross two 5260 devices in load sharing mode or backup mode. Can also set local forwarding first to save the connection bandwidth usage.
- Support various authentication methods such as 802.1x, Radius, TACACS+. Support CPU overload protection, anti-DDOS, deliver customer a security network.

**ZTE**



Tomorrow never waits



- The 802.1x function not only including MAC authentication bypass, VLAN assignment, Guest VLAN, Web Authentication, Dynamic ACL assignment but also support multi users in multi domains for the scenario of multi user authentication sharing one physical port.
  - With technologies like DHCP snooping and IP source guard, user validity can be guaranteed; DAI (dynamic ARP inspection) function can help effectively mitigate the influence caused by ARP attacks.
  - The ZXR10 5260 Series switch supports MFF (MAC forced forwarding), L2 separation and L3 inter-communication can be realized to keep the network safe.
  - For user management, the ZXR10 5260 Series switch not only supports normal username/password login method, but also supports encrypted login pattern including SSH, further eliminating the risk of username/password revelation.
  - The ZXR10 5260 Series switch supports not only ingress ACL, but also egress ACL. User can implement incoming and outgoing traffic classification and speed restriction at the same time. This mechanism enables the customer to greatly simplify configuration and make more refined control in certain scenarios.
- **Easy Maintenance**
    - The ZXR10 5260 Series switch supports zero-configuration. When powered on, the equipment will automatically fetch its own software version and images.
    - The ZXR10 5260 Series switch supports off power alarming, which can help the operation staff make quick judgment and accelerate failure processing.
    - The ZXR10 5260 Series switch supports Ethernet OAM, including IEEE 802.3ah, 802.1ag, helps monitoring network real-time operating status and fulfills fast fault detection, fault location.
  - **Low OPEX, Green for More**
    - Support IEEE 802.3az EEE (Energy Efficient Ethernet). Via chip-grade power management, interfaces and line card can automatically sleep when no traffic. In this way, electricity can be saved, and the power consumption of a single port can be reduced by 70%

**ZTE**



Tomorrow never waits



- The fan speed can be automatically adjusted by 5 levels in accordance with the temperature inside the switch. It not only saves the power consumption, but also reduces the noise and extends the life cycle of fans.
- Complying with ROHS, WEEE and ISO14001 certification, No plumbum (Pb) in not only product materials but also the whole processing technic. Meanwhile, uses re-cycle degradable packing materials, practice green for more.

## System Specification

Function and Parameters	5260-28PD-H	5260-52PD-H
<b>Dimensions (H*W*D)</b>	43.6mm*442mm*440mm	
<b>Fixed Ports</b>	24 GE RJ45 (POE/POE+) +4 10GE SFP+	48 GE RJ45 (POE/POE+) +4 10GE SFP+
<b>Weight</b>	< 7.7kg	< 7.8kg
<b>Management Port</b>	1 GE MNG, 1RJ45 Console, 1 Mini USB Console	
<b>AC Power Supply</b>	Rated voltages: 100V~240V, 50Hz~60Hz	
<b>Max Power Consumption</b>	<790W (POE:720W)	<1,040W (POE:960W)
<b>Power Redundancy</b>	One inside AC power module + One modular AC power	
<b>Working Temperature</b>	Long term working temperature: -10 °C ~ +50 °C Short term working temperature: -10 °C ~ +55 °C	
<b>Working Humidity</b>	20%~90%	
<b>Working Altitude</b>	<2000 meters	
<b>MTBF/MTTR</b>	>100,000 hours/ < 30 minutes	
<b>MAC Table</b>	16k	16k
<b>Jumbo Frames</b>	10k	10k
<b>Switching Capacity</b>	128Gbps	176Gbps
<b>Packet Forwarding Rate</b>	96Mpps	132Mpps

**ZTE**



Tomorrow never waits



## Service Specification

Function	The ZXR10 5260 Series switch
<b>L2 Features</b>	<p>Support IEEE 802.1p (COS), IEEE 802.1q (VLAN), IEEE 802.3x</p> <p>Support IEEE 802.1d (STP)/ 802.1w (RSTP)/ 802.1s (MSTP)</p> <p>Support IEEE 802.3ad (LACP), Static Trunk</p> <p>Support IEEE 802.3u(100Base-T)/802.3z (1000Base-X) / 802.3ab (1000BaseT)</p> <p>Support IEEE 802.3ae (10Gbase)</p> <p>Support port-based VLAN, MAC-based VLAN, Voice VLAN</p> <p>Support QinQ, Selective QinQ</p> <p>Support PVLAN</p> <p>Support Port mirroring, Traffic mirroring</p> <p>Support GVRP</p> <p>Support LLDP</p> <p>Support UDLD</p> <p>Support MAC binding and converting</p> <p>Support MAC filtering and dynamic MAC learning</p> <p>Support broadcast storm suppression</p> <p>Support line diagnosis analysis and test</p> <p>Support port loopback check</p> <p>Support MFF</p>
<b>L3 Features</b>	<p>Support IPv4 Static routing, RIP, OSPF</p> <p>Support DHCP Snooping, DHCP Relay, DHCP Option82</p> <p>Support DHCPv6 Snooping, DHCPv6 Relay</p>
<b>Multicast</b>	<p>Support IGMPv1/v2/v3 snooping</p> <p>Support CAC (channel access control), MVR (Multicast VLAN Registration)</p> <p>Support MVR</p> <p>Support MLD Snooping</p>
<b>QoS</b>	<p>Support traffic classification based on Layer 2 headers, Layer 3 protocols, Layer 4 protocols, and 802.1p priority</p> <p>Support 8 hardware-based queues per port</p> <p>Support queue scheduling algorithms, such as SP, WRR, SP+WRR</p> <p>Support congestion avoidance mechanisms, such as WRED and tail drop</p> <p>Support policing/shaping based on port</p>



Tomorrow never waits



Function	The ZXR10 5260 Series switch
<b>PoE</b>	Support POE (IEEE 802.3 af) Support POE+ (IEEE 802.3 at)
<b>Security</b>	Support standard ACL, VLAN ACL, Link ACL, extended ACL, mixed ACL, IPv6 ACL Support time-range ACL configuration, Bidirectional ACL Support 802.1x authentication and 802.1x server Support MAC authentication and web authentication Support AAA/ RADIUS and TACACS+ authentication for login users Support SSHv2 Support CPU anti-attack Support STP Root Guard, BPDU guard, IP Source Guard Support URPF
<b>Reliability</b>	Support 1+1 redundancy power supply Support Hot plugging Support LACP Support ERPS (Ethernet Ring Protection Switching) Support ZESR/ZESR+ (ZTE Ethernet Switch Ring) Support LLDP, LLDP-MED
<b>Equipment Management</b>	Support CLI, Telnet, SSHv2, Local and remote (Radius/Tacacs+) user authentication Support out-band management interface Support SNMP v1/v2/v3 Support Mirroring, RSPAN Support RMON Support WEB management Support NTP Support FTP/TFTP/SFTP Support Syslog, Sflow Support Easy Manager zero-configuration and fast in-batch inspection tool Support Dying gasp power-off alarm
<b>Enhanced Features</b>	Support Virtual Switch Cluster (VSC) Support Zero-touch deployment

ZTE





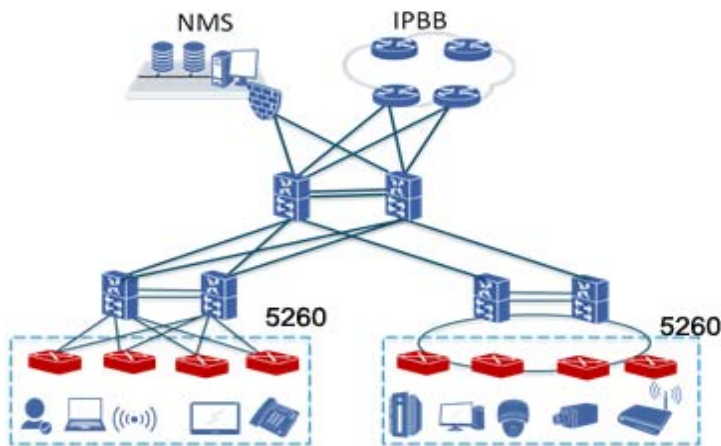
Tomorrow never waits



## Application Scenario

- **Access in Enterprise Campus Network**

The ZXR10 5260 Series switch supports various L2 features and VSC2.0 and POE/POE+, it can be applied in multiple scenarios including campus access and GE to desktop scenario. Below is an example of campus application as an access switch.



## Order Information

### Mainframe

5260-28PD-H	5260-28PD-H Switch (POE/POE+)
5260-52PD-H	5260-52PD-H Switch (POE/POE+)

### Power Module

52-PWR-AC50	5260 AC Power Module
-------------	----------------------

### Fan Module

52-FAN	5260 Fan Module
--------	-----------------

# ZTE



Tomorrow never waits



## ZTE CORPORATION

NO. 55, Hi-tech Road South, ShenZhen, P. R. China

Postcode: 518057

Web: [www.zte.com](http://www.zte.com)

Tel: +86-755-26770000

Fax: +86-755-26771999