

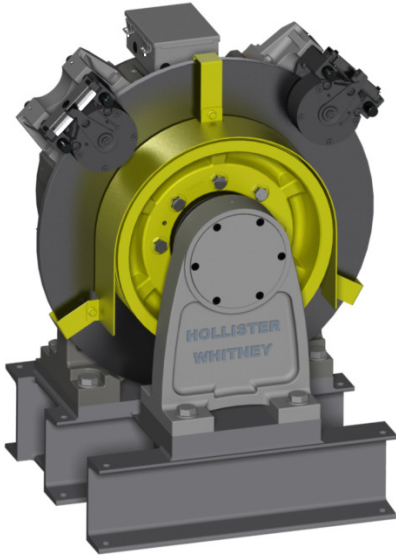


Hollister-Whitney Elevator Corporation

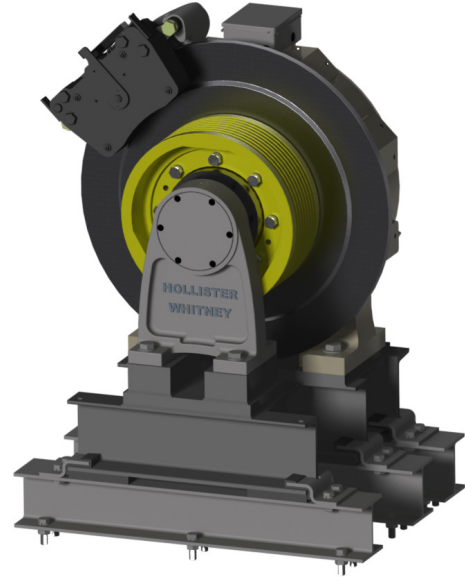
#1 Hollister-Whitney Parkway
Quincy, IL 62305
Phone: 217-222-0466

Fax: 217-222-0493
e-mail: info@hollisterwhitney.com
www.hollisterwhitney.com

GL Machine - Selection of Optional Configuration Images



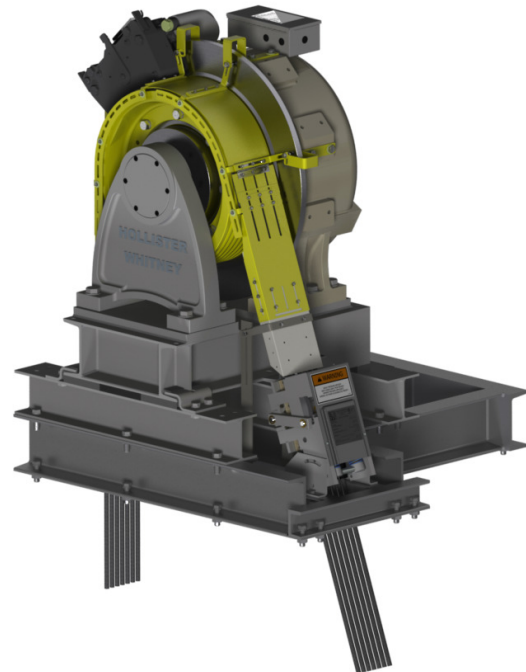
GL171 Machine (standard base)



GL130A Machine (standard base w/ isolation)



GL260 (standard base w/ guard)



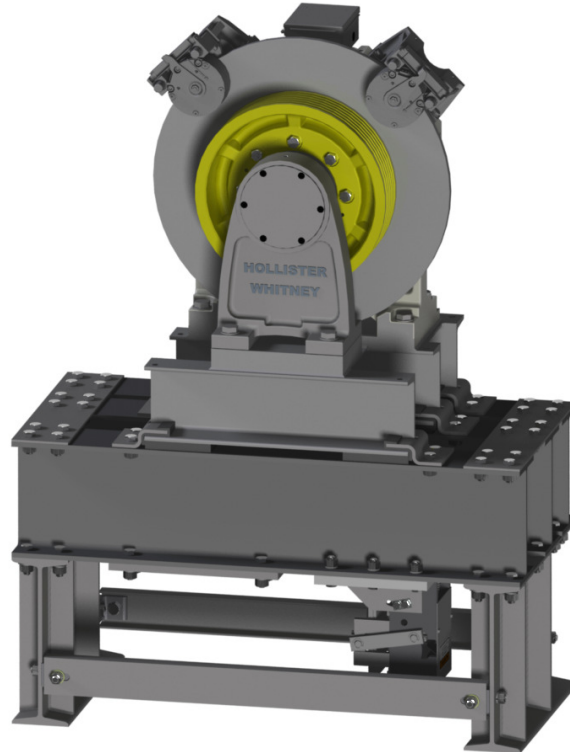
GL185 (isolation w/ "Rope Gripper"™)



Hollister-Whitney Elevator Corporation

#1 Hollister-Whitney Parkway
Quincy, IL 62305
Phone: 217-222-0466

Fax: 217-222-0493
e-mail: info@hollisterwhitney.com
www.hollisterwhitney.com



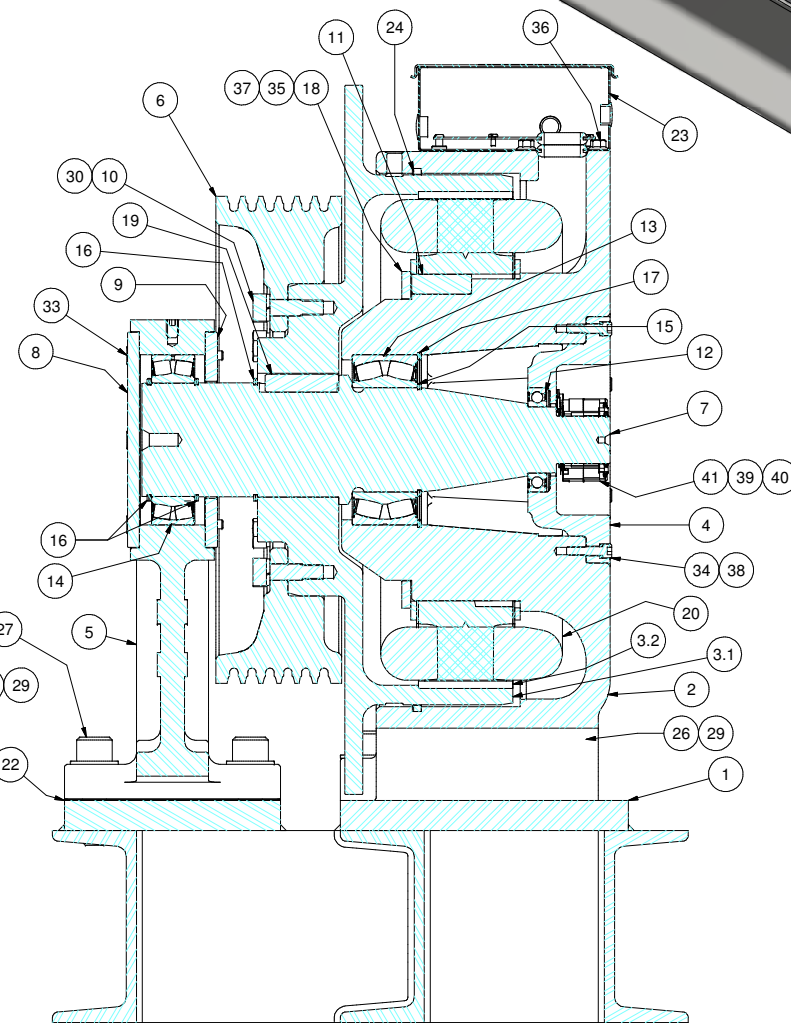
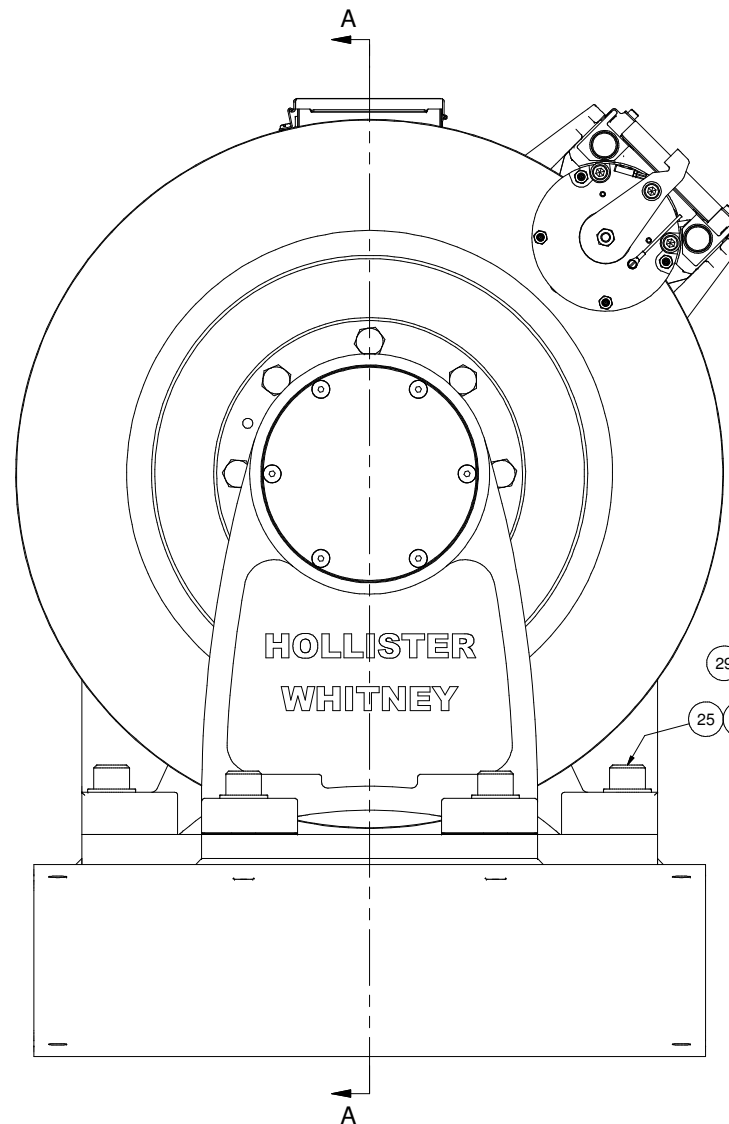
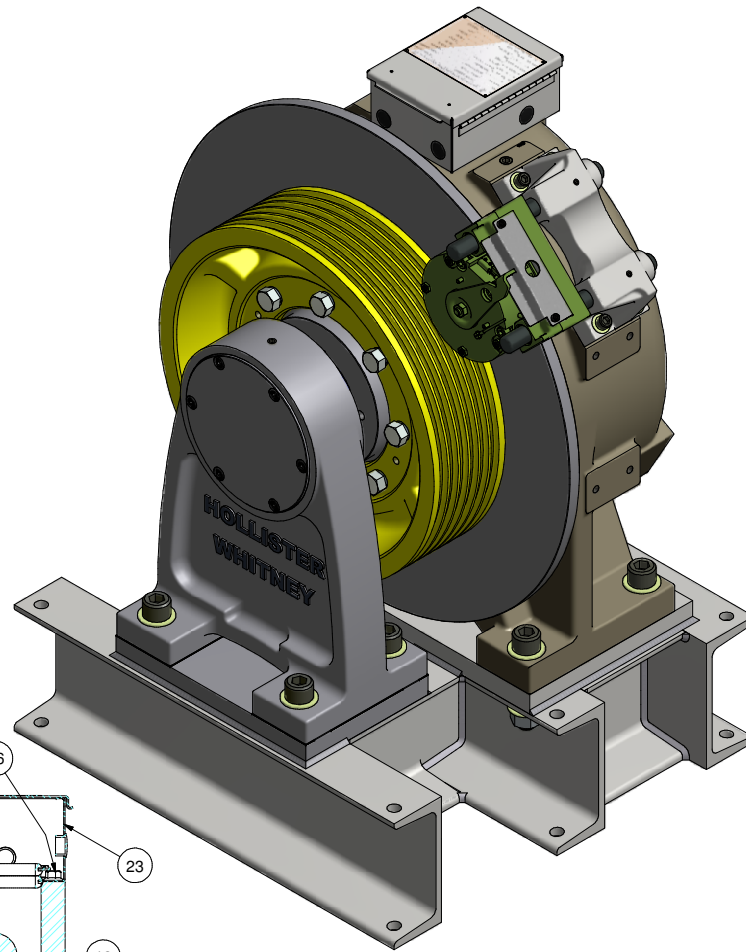
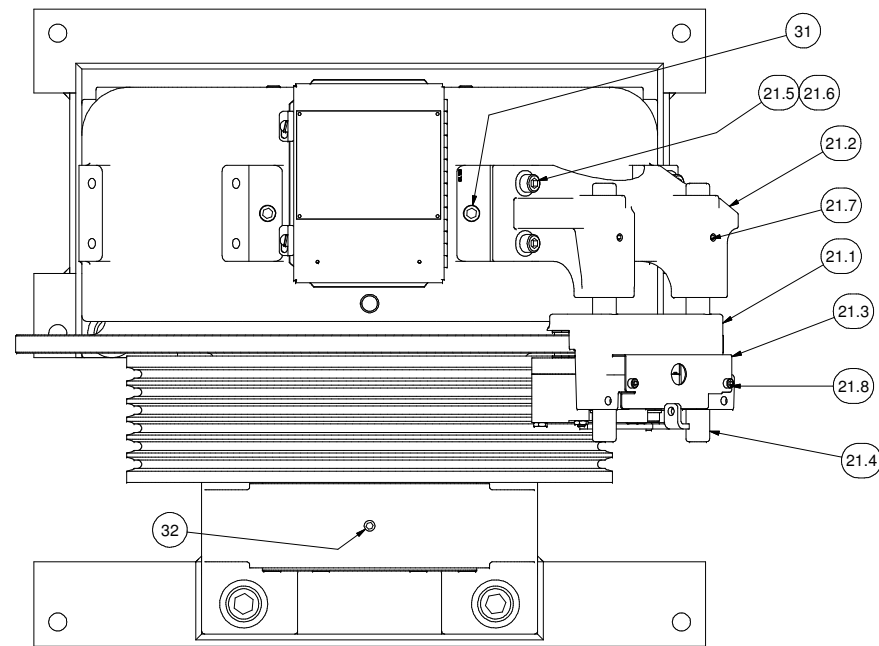
GL171 (build-up base for "Rope Gripper"[™] & Deflector Sheave)



GL101 Machine



GL131 Machine



SECTION A-A
SCALE 1 / 4

ITEM	QTY	PART NUMBER	DESCRIPTION
1	1	GL101B-01	BASE FABRICATION - FINISHED
2	1	GL100-001	BASE HOUSING, MOTOR #GL100
3	1	GL101-002	ROTOR ASSEMBLY, MOTOR #GL100
3.1	1	GL101-004	ROTOR
3.2	28	GL100-099	PERMANENT MAGNET - MOTOR #GL100
4	1	GL260-005	BEARING CAP
5	1	GL171-006	OUTBOARD STAND, AC GEARLESS
6	1	GL100-010	20" SHEAVE, 6 x 1/2" ROPE MAX
7	1	GL101-018	MAIN SHAFT
8	1	GL171-019	END CAP
9	1	GL171-020	BEARING END CAP
10	8	GL100-073	BODY BOLT
11	1	GL100-088	KEY - STATOR CORE TO BASE
12	1	GL185-089	BEARING, SEALED SINGLE ROW DEEP GROOVE BALL
13	1	GL100-090	Bearings, Sealed Spherical Roller
14	1	GL185-090	BEARING, SEALED SPHERICAL ROLLER
15	1	GL100-092	RETAINING RING - SHAFT
16	3	GL130-092	RETAINING RING - HOUSING
17	1	GL100-093	RETAINING RING - HOUSING
18	1	GL100-094	CLAMP RING - STATOR ASSEMBLY
19	1	GL100-095	KEY - ROTOR TO SHAFT
20	1	GL100-100	WINDING ASSEMBLY
21	1	GL100-146	DISC BRAKE (MAYR #6) - MRL
21.1	1	GL100-146-115	MAYR #6 RSD6 894 510 03 #8211863 (104/52 VDC)
21.2	1	142-001	BRAKE BASE
21.3	1	146-003	COVER - MAYR #6 ELECTRICAL
21.4	2	142-012	BRAKE ROD
21.5	4	1/2-13 UNC x 2	SOCKET HEAD CAP SCREW
21.6	4	1/2" WASHER	STANDARD WASHER
21.7	2	3/8-16 UNC x 0.375	SET SCREW
21.8	2	M6 x 1.00 x 8mm	SHCS - Metric
22	As Nec.	GL171-157-05	OUTBOARD STAND SHIM - 0.005"
		GL171-157-10	OUTBOARD STAND SHIM - 0.010"
		GL171-157-31	OUTBOARD STAND SHIM - 0.031"
23	1	GL100-159	ELECTRICAL ENCLOSURE, HOFFMAN A806CH - MODIFIED
24	1	GL100-165	FELT DUST SEAL
25	2	1 - 8 UNC x 5"	SOCKET HEAD CAP SCREW
26	2	1 - 8 UNC x 4"	SOCKET HEAD CAP SCREW
27	4	1 - 8 UNC x 3.25"	SOCKET HEAD CAP SCREW
28	8	1" WASHER	SAE WASHER
29	8	1" NUT	HEX NUT
30	8	Washer GB 859-87 18	Single coil spring lock washers, Light type
31	6	3/4 - 10 UNC x 0.75"	SET SCREW (HOLE PLUG)
32	6	1/2 - 13 UNC x 0.5"	SET SCREW (HOLE PLUG)
33	6	3/8-16 UNC x 4	FLAT HEAD CAP SCREWS
34	6	3/8 - 16 UNC x 1.5	SOCKET HEAD CAP SCREW
35	6	3/8 - 16 UNC x 1	SOCKET HEAD CAP SCREW
36	4	3/8 - 16 UNC x 0.625"	WHIZ BOLT
37	6	3/8 WASHER	STANDARD LOCK
38	6	0.375 WASHER	CAP SCREW LOCK WASHER
39	4	#8-32 x 1/4"	SOCKET HEAD CAP SCREW
40	4	#8 WASHER	INT. TOOTH LOCKWASHER
41	1	ECN 113 52810061	50mm HEIDENHAIN ENCODER

1:1 APPLICATIONS USING 2:1 WINDINGS						
MACHINE #	WINDING P/N	COIL/WINDING EFFICIENCY (%)	FRAME/MAGNET SIZE (mm)	VOLTAGE (Vac)	MACHINE SPEED (rpm)	CAR SPEED 20" (fpm)
GL101-15L	GL100-170-150	87.2	100	170	76.4	400
GL101-15H	GL100-360-150	87.1	100	360	76.4	400
GL101-20L	GL100-170-200	89.2	100	170	101.9	533
GL101-20H	GL100-360-200	89.3	100	360	101.9	533

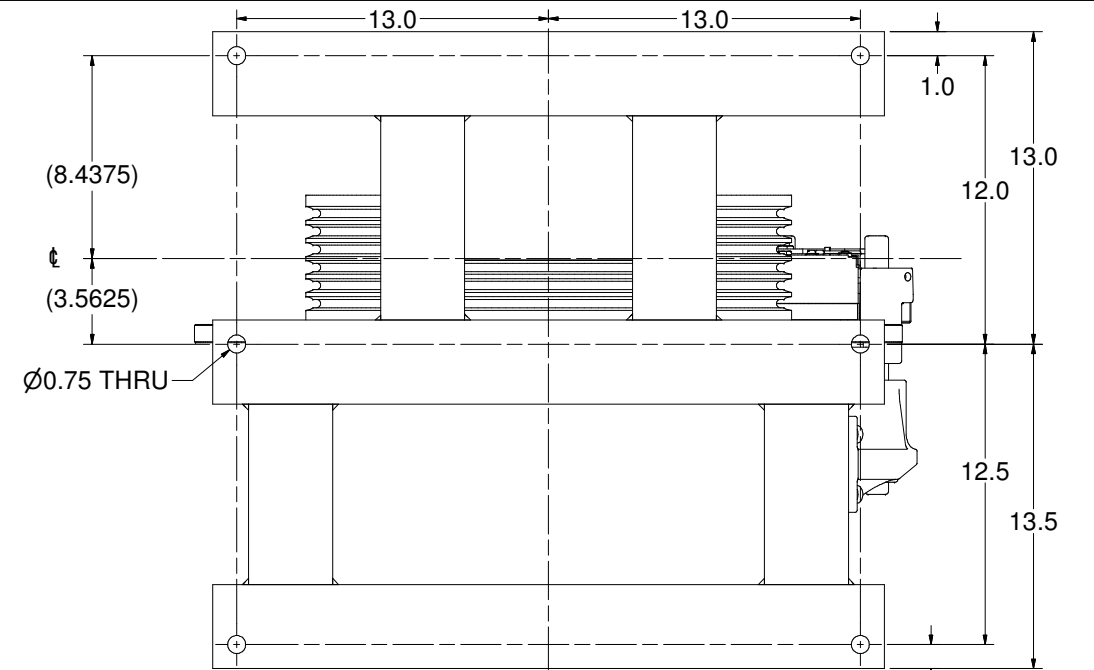
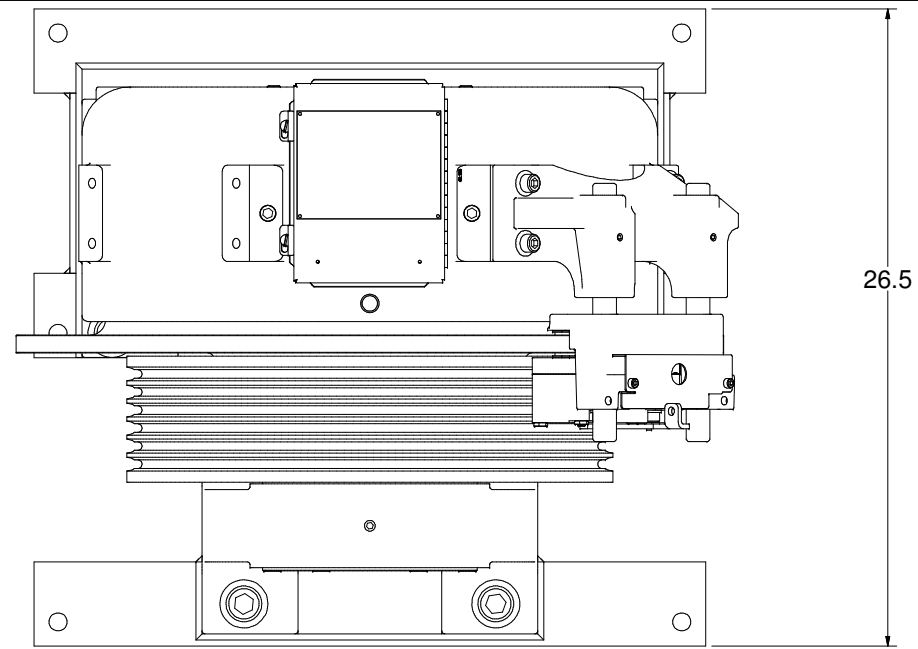
Weight: 1928.07 lbmass

HOLLISTER-WHITNEY
ELEVATOR CO.

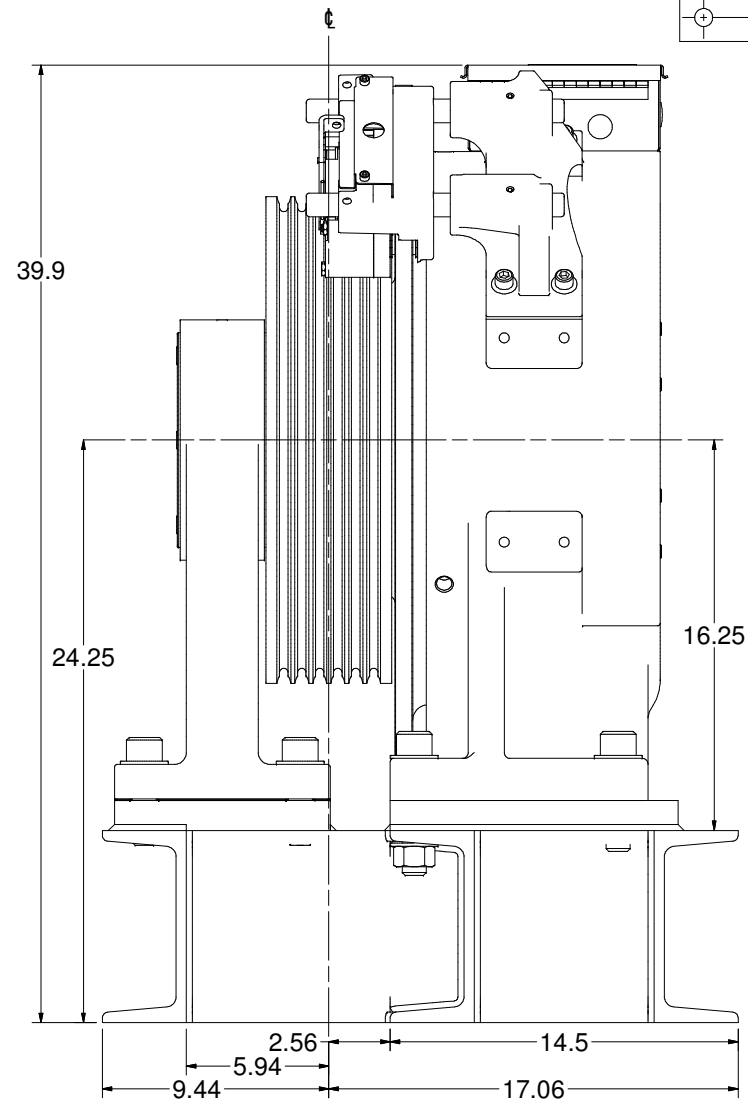
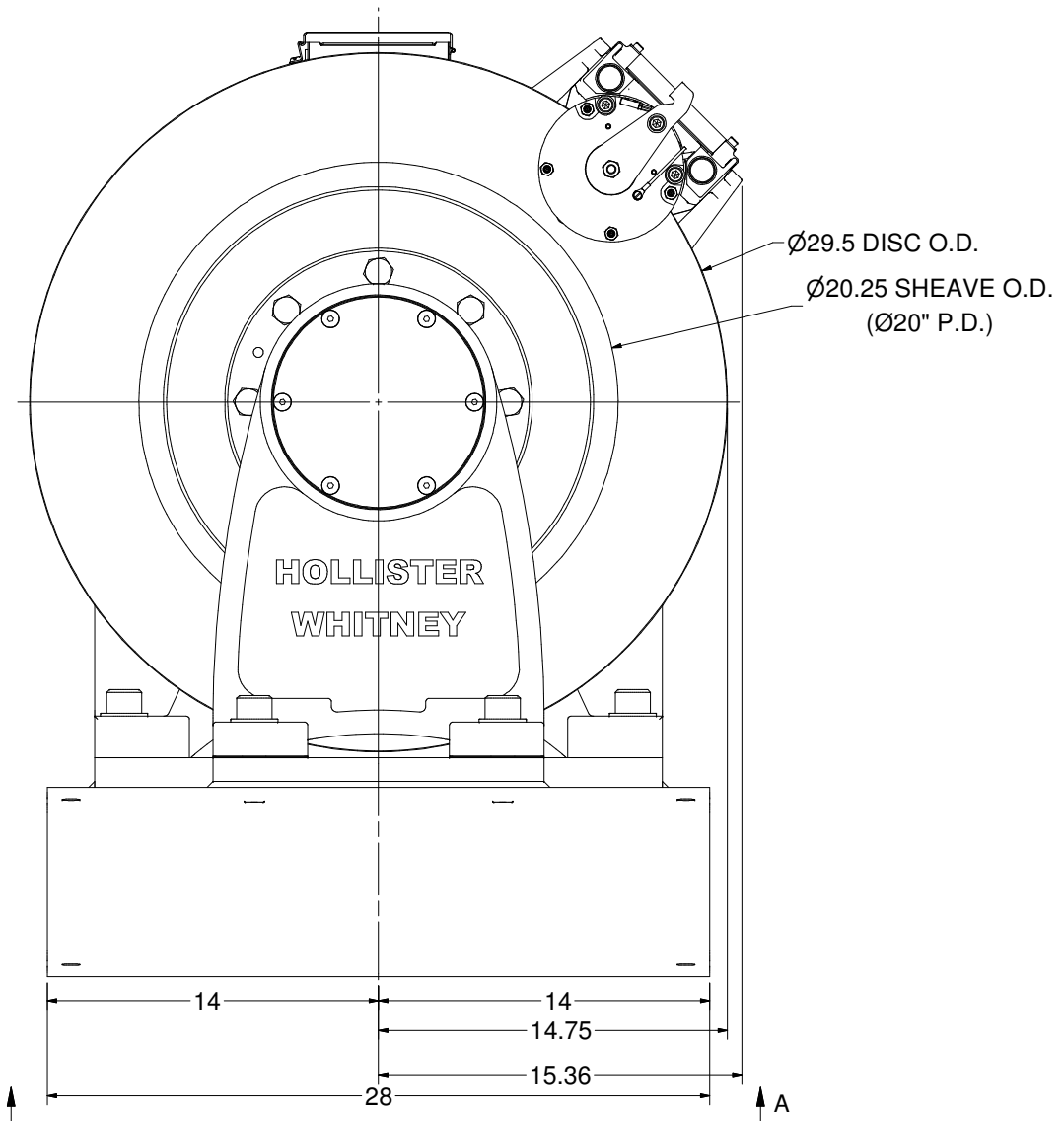
TITLE GEARLESS MACHINE, 1100# @ 50% CB,
1000# @ 45% CB, 900# @ 40% CB

DRAWN BY	SCALE	MATERIAL	DIMENSIONAL TOL.
LTL	NA	SEE MATERIAL LIST	1 PLACE ±0.01, 2 PLACE ±0.005 3&4 PLACE ±0.001, ANGLES ±0.1° REF., OPEN, (NOMINAL) ± 0.0150
PRODUCTION RELEASE, PUR# 640	LTL 5/22/14	SHEET D	DATE 5/21/2014

GL101



VIEW A-A
SCALE 1 / 4



Weight: 1928.07 lbmass

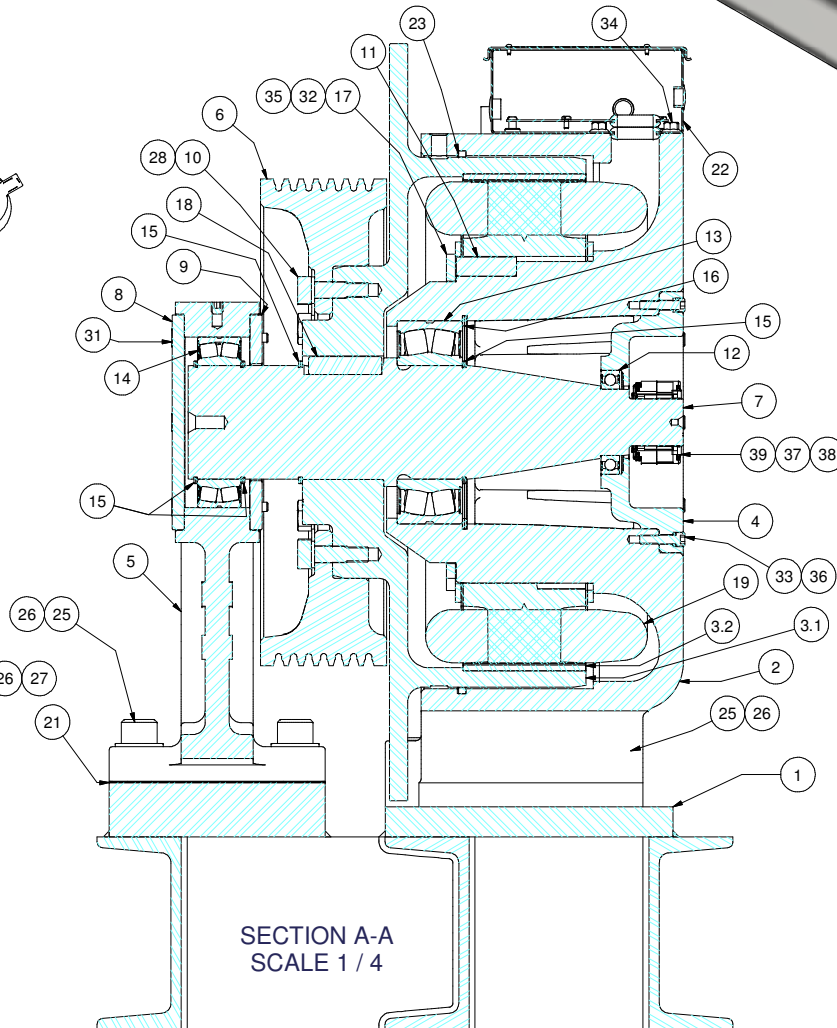
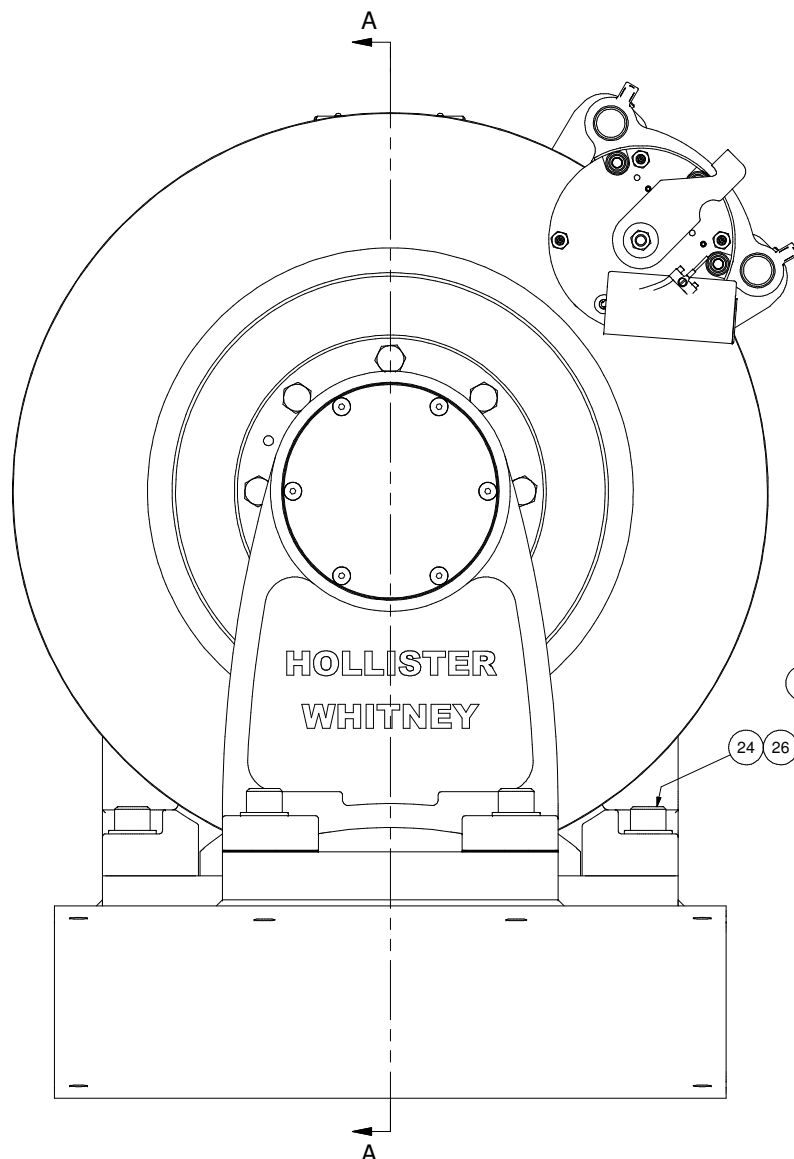
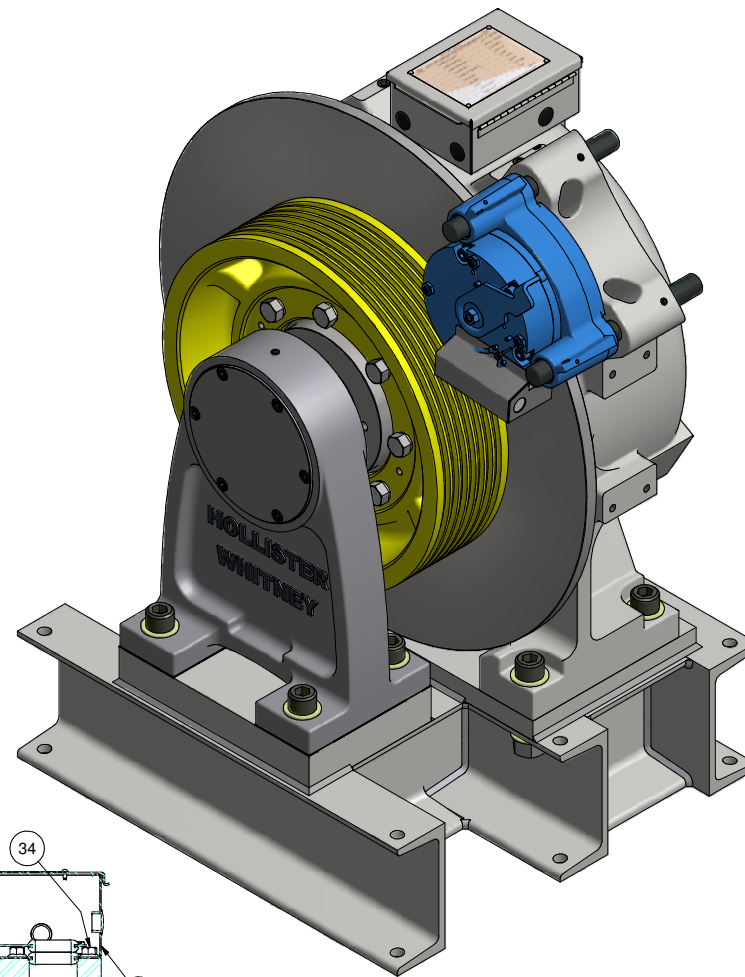
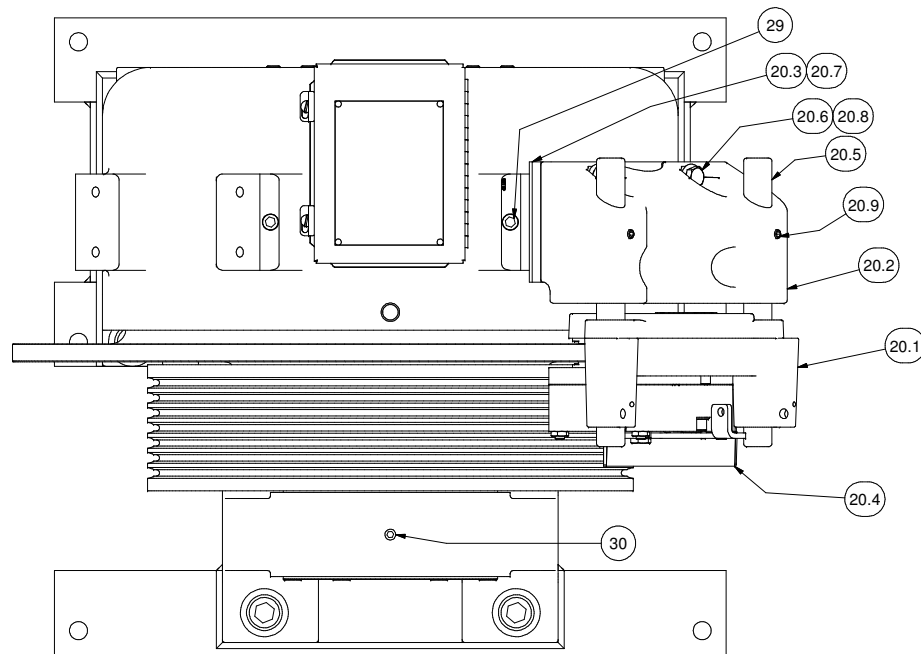
HOLLISTER-WHITNEY
ELEVATOR CO.

TITLE GEARLESS MACHINE, 1100# @ 50% CB,
1000# @ 45% CB, 900# @ 40% CB

DRAWN BY LTL NA SCALE SEE OTHER SIDE MATERIAL SEE OTHER SIDE DIMENSIONAL TOL. 1 PLACE ±0.01, 2 PLACE ±0.005 3&4 PLACE ±0.001, ANGLES ±0.1° REF. OPEN, (NOMINAL) ± 0.0156

SHEET D DATE 5/21/2014 SIZE GL101

SEE OTHER SIDE FOR
REVISIONS



ITEM	QTY	PART NUMBER	DESCRIPTION
1	1	GL171B-01	BASE FABRICATION - FINISHED
2	1	GL130-001	BASE HOUSING, MOTOR #GL130
3	1	GL131-002	ROTOR ASSEMBLY, MOTOR #GL131
3.1	1	GL131-004	ROTOR
3.2	28	GL130-099	PERMANENT MAGNET - MOTOR #GL130
4	1	GL130A-005	BEARING CAP
5	1	GL171-006	OUTBOARD STAND, AC GEARLESS
6	1	GL100-010	20" TRACTION SHEAVE (WIDE)
7	1	GL131-018	MAIN SHAFT
8	1	GL171-019	END CAP
9	1	GL171-020	BEARING END CAP
10	8	GL100-073	BODY BOLT
11	1	GL100-088	KEY - STATOR CORE TO BASE
12	1	GL185-089	BEARING, SEALED SINGLE ROW DEEP GROOVE BALL
13	1	GL130-090	SEALED SPHERICAL ROLLER BEARING
14	1	GL185-090	BEARING, SEALED SPHERICAL ROLLER
15	4	GL130-092	RETAINING RING - SHAFT
16	1	GL130-093	RETAINING RING - HOUSING
17	1	GL100-094	CLAMP RING - STATOR ASSEMBLY
18	1	GL100-095	KEY - ROTOR TO SHAFT
19	1	GL130-100	WINDING ASSEMBLY - 28 POLE
20	1	GL130-144	DISC BRAKE (MAYR #8) - MRL
20.1	1	GL130-144-115	MAYR #8; RSD8 510 03 52V8211833
20.2	1	144-001	BRAKE BASE
20.3	1	144-002	ADAPTOR PLATE - BRAKE BASE
20.4	1	144-003	COVER - MAYR #8 ELECTRICAL
20.5	2	144-012	BRAKE ROD
20.6	4	1/2 - 13 UNC x 1.75"	HEX HEAD CAP SCREW
20.7	4	1/2-13 UNC x 1.5"	FLAT HEAD CAP SCREW
20.8	4	1/2" WASHER	STANDARD WASHER
20.9	2	3/8-16 UNC x 0.625"	SET SCREW
21	As Nec	GL171-157-05	OUTBOARD STAND SHIM - 0.005"
		GL171-157-10	OUTBOARD STAND SHIM - 0.010"
		GL171-157-31	OUTBOARD STAND SHIM - 0.031"
22	1	GL100-159	ELECTRICAL ENCLOSURE, HOFFMAN A806CH - MODIFIED
23	1	GL100-165	FELT DUST SEAL
24	2	1 - 8 UNC x 5"	SOCKET HEAD CAP SCREW
25	6	1 - 8 UNC x 3.5"	SOCKET HEAD CAP SCREW
26	10	1" WASHER	SAE WASHER
27	2	1 - 8 UNC NUT	HEAVY HEX NUT
28	8	Washer GB 859-87 18	Single coil spring lock washers, Light type
29	2	3/4-10 UNCx0.75	HALF DOG SET SCREW
30	1	1/2-13 UNCx0.5	HALF DOG SET SCREW
31	6	3/8-16 UNC x 4	FLAT HEAD CAP SCREWS
32	6	3/8 - 16 UNC x 1	SOCKET HEAD CAP SCREW
33	8	3/8 - 16 UNC x 1.5	SOCKET HEAD CAP SCREW
34	4	3/8 - 16 UNC x 0.625"	WHIZ BOLT
35	6	3/8 WASHER	STANDARD LOCK
36	8	0.375 WASHER	CAP SCREW LOCK WASHER
37	4	#8-32 x 1/4"	SOCKET HEAD CAP SCREW
38	4	#8 WASHER	INT. TOOTH LOCKWASHER
39	1	ECN 113 52810061	50mm HEIDENHAIN ENCODER

1:1 APPLICATIONS USING 2:1 WINDINGS						
MACHINE #	WINDING P/N	COIL/WINDING EFFICIENCY (%)	FRAME/MAGNET SIZE (mm)	VOLTAGE (Vac)	MACHINE SPEED (rpm)	CAR SPEED 20" (fpm)
GL131-20L	GL130-170-200	90.6	130	170	101.9	533
GL131-20H	GL130-360-200	90.7	130	360	101.9	533
GL131-35L	GL130-170-350	93.1	130	170	178.3	933
GL131-35H	GL130-360-350	93	130	360	178.3	933

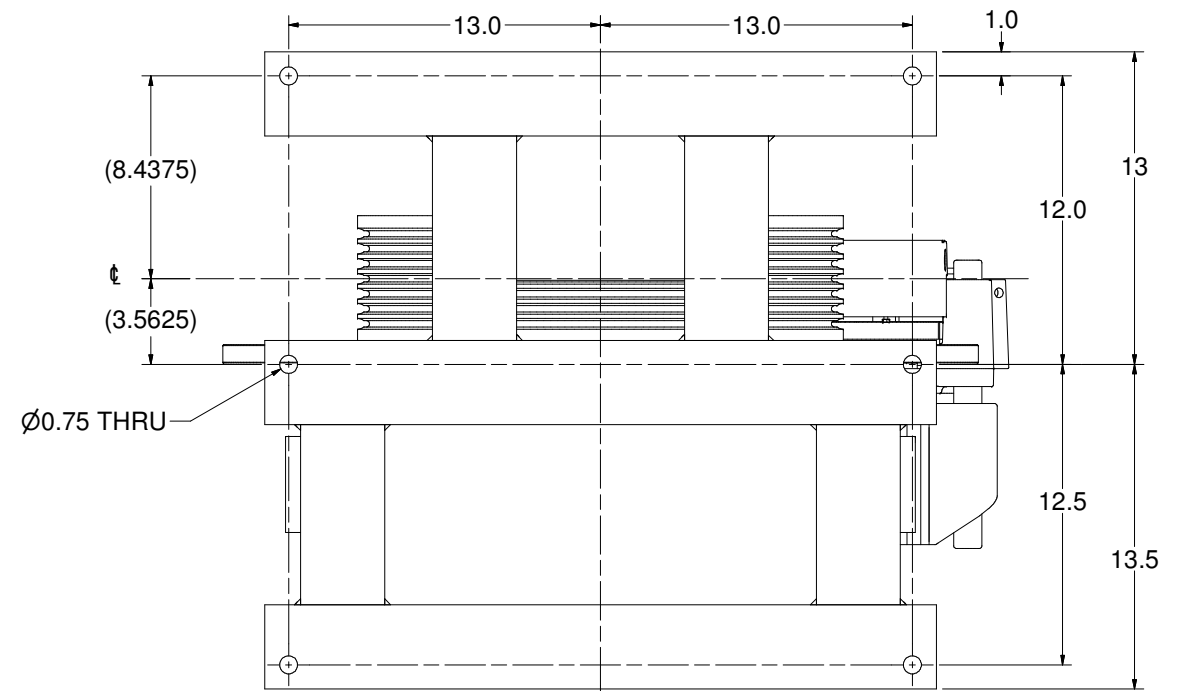
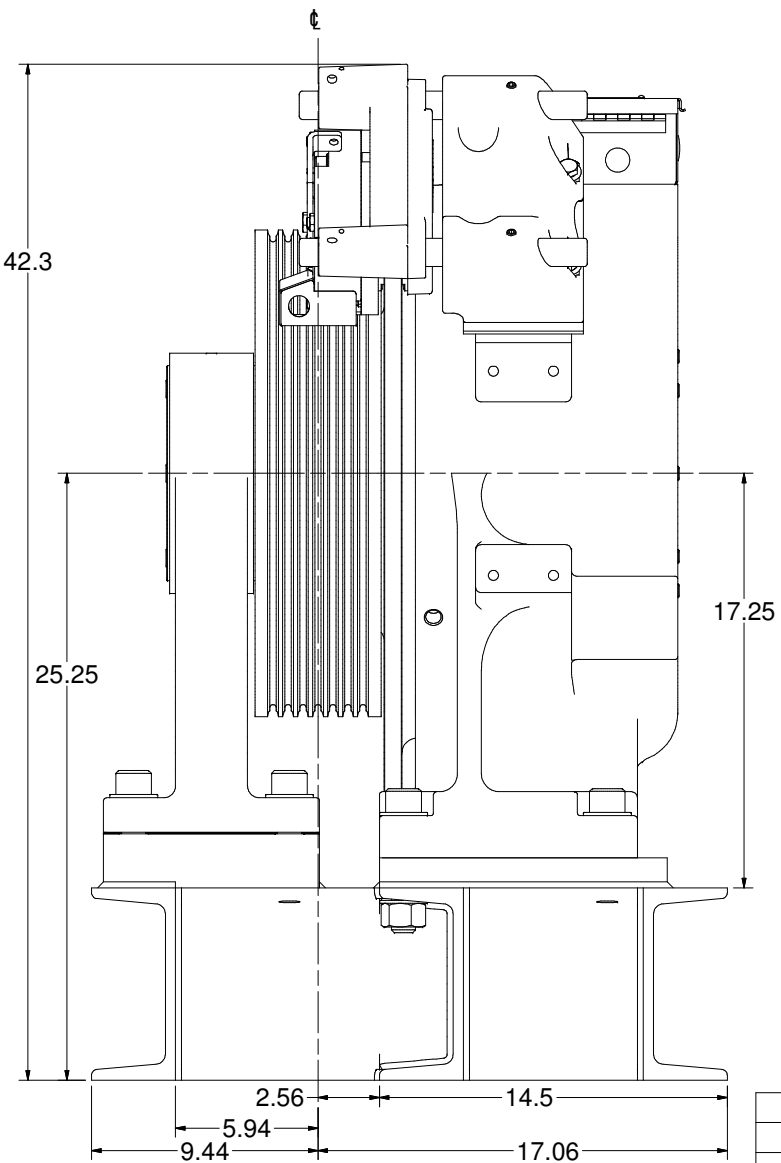
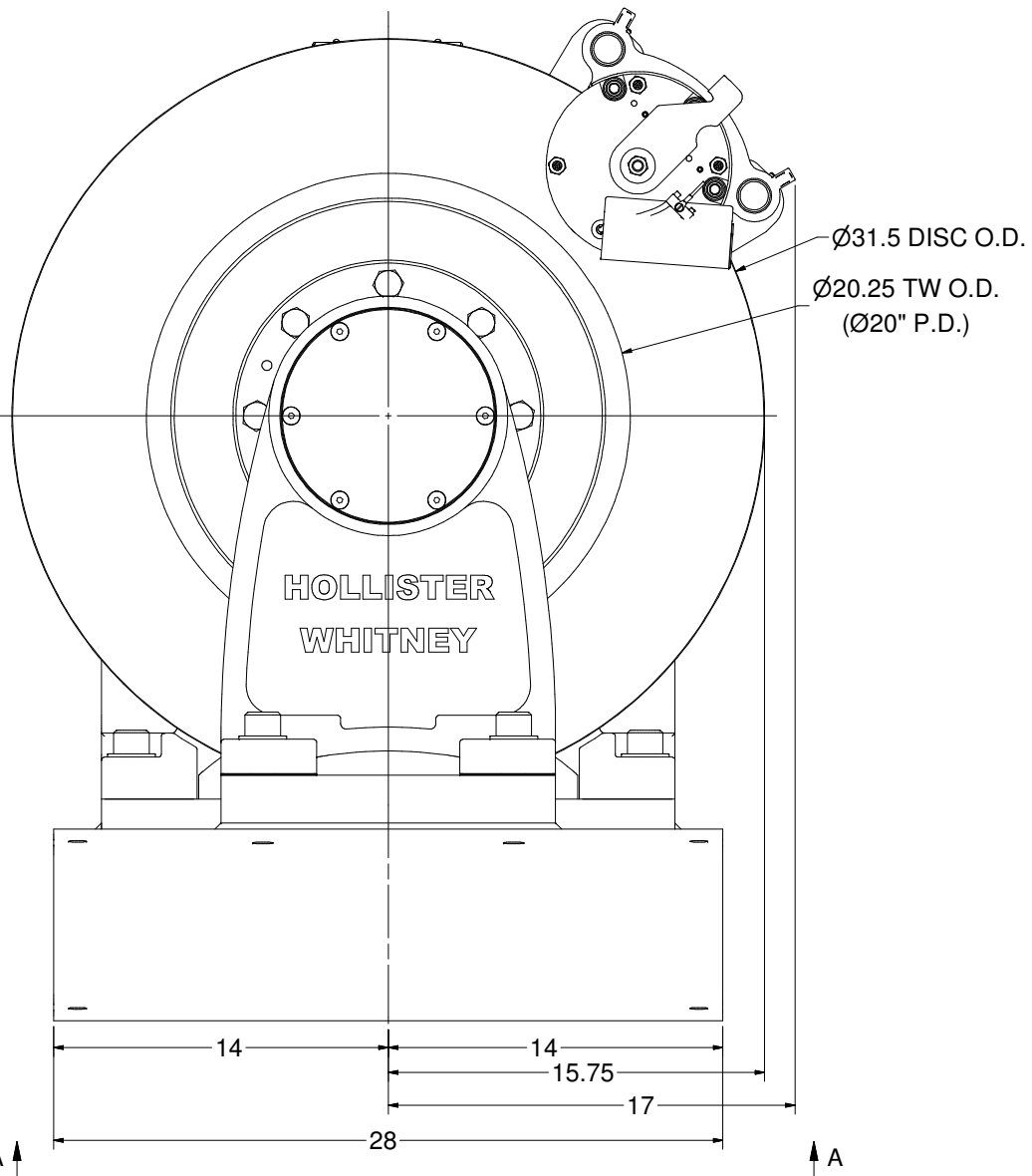
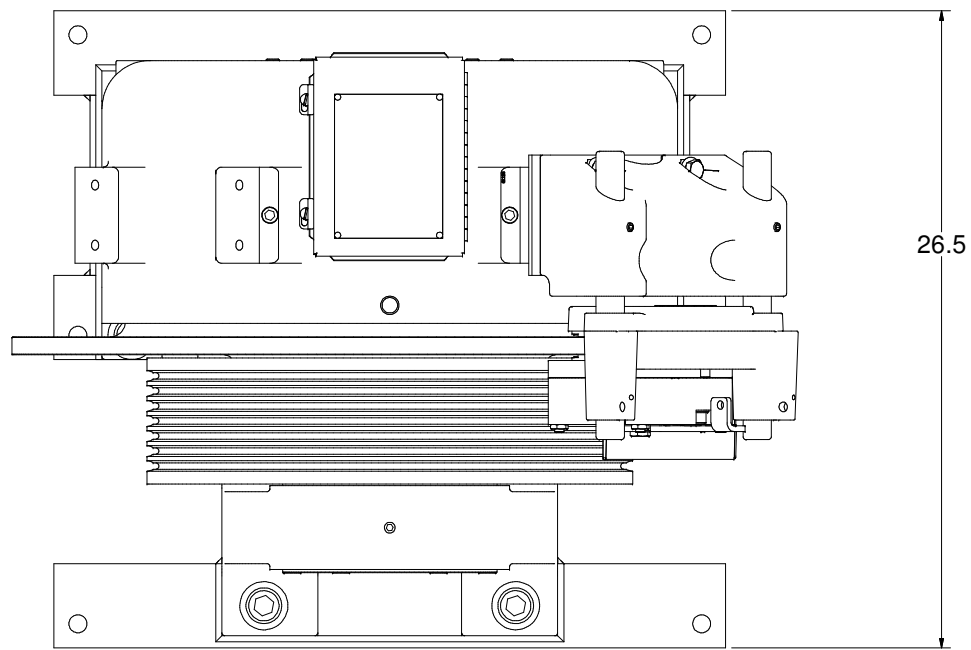
Weight: 2222.94 lbmass

HOLLISTER-WHITNEY
ELEVATOR CO.

TITLE GEARLESS MACHINE, 1500# @ 50% CB,
1350# @ 45% CB, 1250 @ 40% CB 1:1 ROPED

DRAWN BY LTL N/A SCALE SEE PARTS LIST MATERIAL DIMENSIONAL TOL. 1 PLACE ±0.01, 2 PLACE ±0.005 3&4 PLACE ±0.001, ANGLES ±0.1° REF. OPEN, (NOMINAL) ± 0.0150

PRODUCTION RELEASE, PUR# 658 LTL 7/2/14 SHEET SIZE D DATE 6/27/2014 **GL131**



VIEW A-A
SCALE 1/4

Weight: 2222.94 lbmass

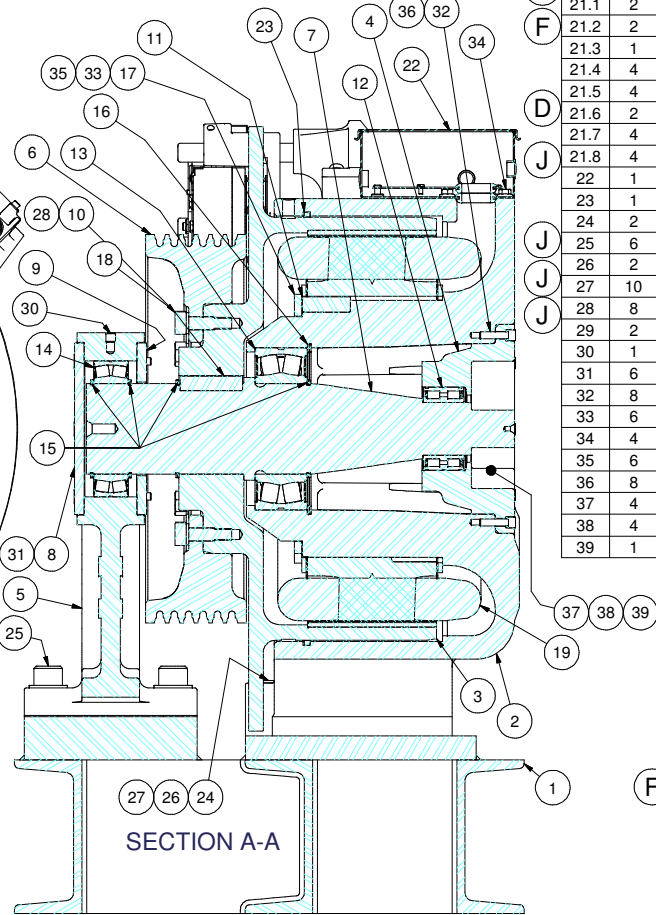
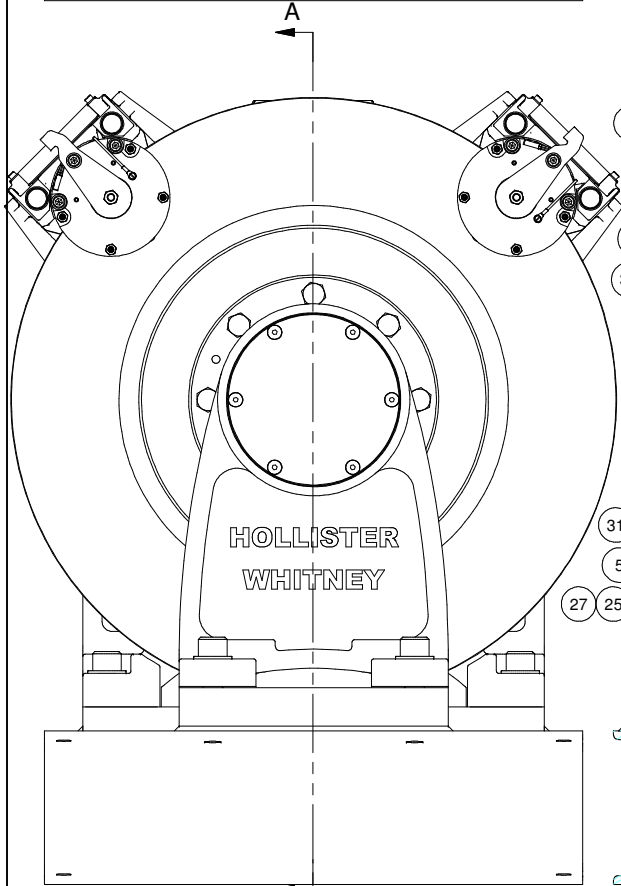
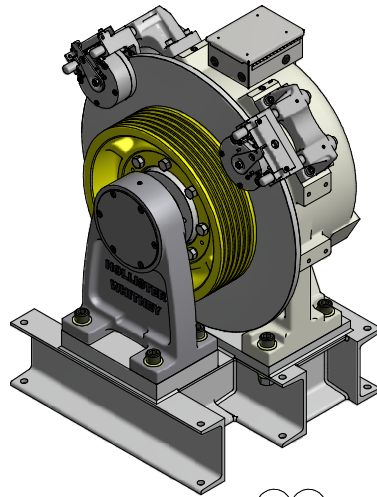
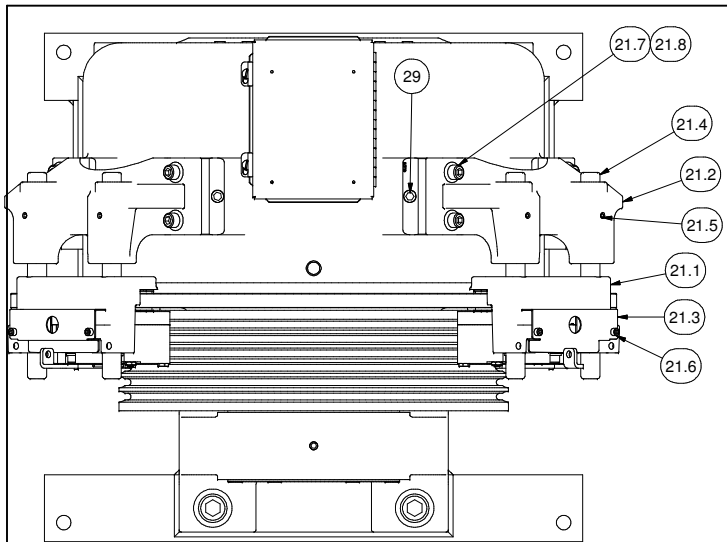
HOLLISTER-WHITNEY
ELEVATOR CO.

TITLE GEARLESS MACHINE, 1500# @ 50% CB,
1350# @ 45% CB, 1250 @ 40% CB 1:1 ROPED

DRAWN BY LTL NA SCALE MATERIAL SEE OTHER SIDE DIMENSIONAL TOL.
1 PLACE ±0.01, 2 PLACE ±0.005
3/4 PLACE ±0.001, ANGLES ±0.1
REF. OPEN, (NOMINAL) ± 0.0150

SHEET D DATE 6/27/2014 SIZE GL131

SEE OTHER SIDE
FOR
REVISIONS



SECTION A-A

Parts List			
ITEM	QTY	PART NUMBER	DESCRIPTION
1	1	GL171B-01	BASE FABRICATION - FINISHED
2	1	GL170-001	BASE HOUSING, MOTOR #GL170
3	1	GL171-002	ROTOR ASSEMBLY, MOTOR #GL171
4	1	GL130-005	BEARING CAP
5	1	GL171-006	OUTBOARD STAND, AC GEARLESS
6	1	GL100-010	20" SHEAVE, 6 x 1/2" ROPE MAX
7	1	GL171-018	MAIN SHAFT
8	1	GL171-019	END CAP
9	1	GL171-020	BEARING END CAP
10	8	GL100-073	BODY BOLT
11	1	GL100-088	KEY - STATOR CORE TO BASE
12	1	GL100-089	Bearing, Sealed Double Row Cylindrical Roller
13	1	GL130-090	SEALED SPHERICAL ROLLER BEARING
14	1	GL185-090	BEARING, SEALED SPHERICAL ROLLER
15	4	GL130-092	RETAINING RING - SHAFT
16	1	GL130-093	RETAINING RING - HOUSING
17	1	GL100-094	CLAMP RING - STATOR ASSEMBLY
18	1	GL171-095	KEY - MAIN SHAFT TO ROTOR
19	1	GL171-100	WINDING ASSEMBLY - 28 POLE, 1:1 Application SEE BELOW
20	1	GL170-100	WINDING ASSEMBLY - 28 POLE (2:1 IN 1:1 APL.), SEE BELOW
21	2	GL100-146	DISC BRAKE (MAYR #6) - MRL
21.1	2	GL100-146-115	MAYR #6 RSD6 894 510 03 #8211863 (104/52 VDC)
21.2	2	142-001	BRAKE BASE
21.3	1	146-003	COVER - MAYR #6 ELECTRICAL
21.4	4	142-012	BRAKE ROD
21.5	4	3/8-16 UNC x 0.375	SET SCREW
21.6	2	M6 x 1.00 x 8mm	SHCS - Metric
21.7	4	1/2-13 UNC x 2	SOCKET HEAD CAP SCREW
21.8	4	1/2" WASHER	STANDARD WASHER
22	1	GL100-159	ELECTRICAL ENCLOSURE, HOFFMAN A806CH - MODIFIED
23	1	GL100-165	FELT DUST SEAL
24	2	1 - 8 UNC x 5"	SOCKET HEAD CAP SCREW
25	6	1 - 8 UNC x 3.5"	SOCKET HEAD CAP SCREW
26	2	1 - 8 UNC NUT	HEAVY HEX NUT
27	10	1" WASHER	SAE WASHER
28	8	M18 LOCKWASHER-DIN 127B	HELICAL SPRING LOCK WASHER - BODY BOLT
29	2	3/4-10 UNC x 0.75	SET SCREW (HOLE PLUG)
30	1	1/2-13 UNC x 0.5	SET SCREW (HOLE PLUG)
31	6	3/8-16 UNC x 4	FLAT HEAD CAP SCREWS
32	8	3/8 - 16 UNC - 1 1/2	SOCKET HEAD CAP SCREW
33	6	3/8 - 16 UNC - 1	SOCKET HEAD CAP SCREW
34	4	3/8-16 UNC x 0.625	WHIZ BOLT
35	6	0.375 WASHER	HELICAL SPRING LOCK WASHER
36	8	0.375 WASHER	CAP SCREW LOCK WASHER
37	4	#8-32 x 1/4"	SOCKET HEAD CAP SCREW
38	4	#8 WASHER	INT. TOOTH LOCKWASHER
39	1	ECN 113 52810061	50mm HEIDENHAIN ENCODER

WINDINGS AS DESIGNED FOR 1:1 (2000 LBS CAP.)						
MACHINE #	WINDING P/N	COIL/WINDING EFFICIENCY (%)	FRAME/MAGNET SIZE (mm)	VOLTAGE (Vac)	MACHINE SPEED (rpm)	CAR SPEED 20" (fpm)
GL171-20L	GL171-170-200	87	170	170	38.2	200
GL171-20H	GL171-360-200	87	170	360	38.2	200
GL171-40L	GL171-170-400	87	170	170	76.4	400

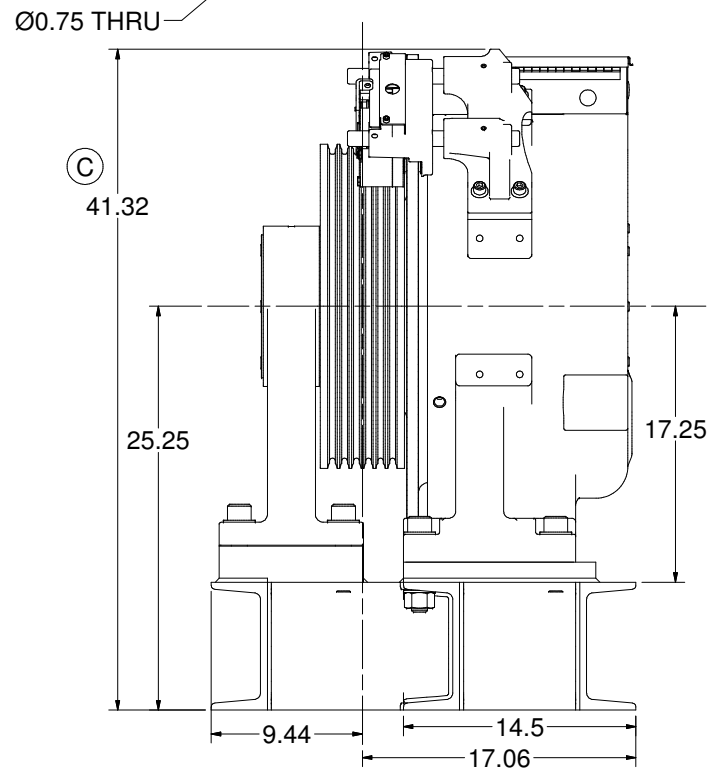
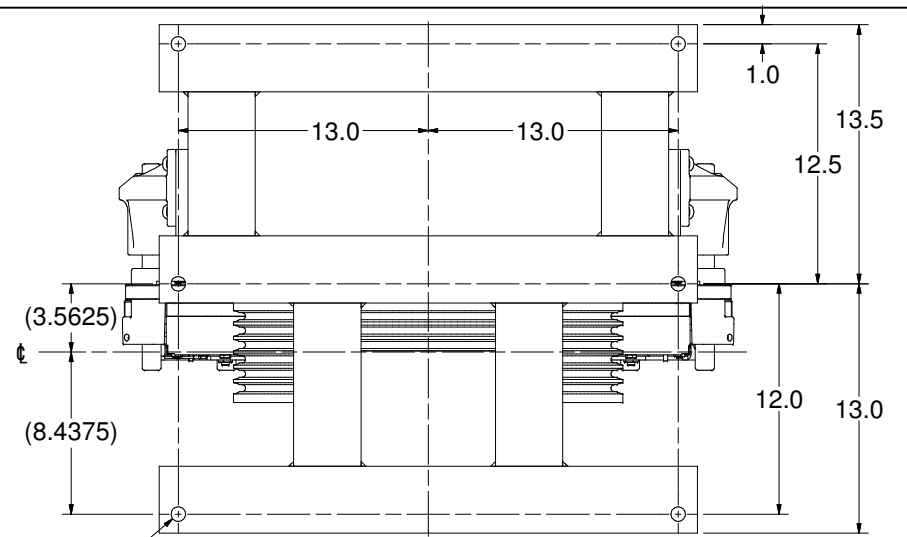
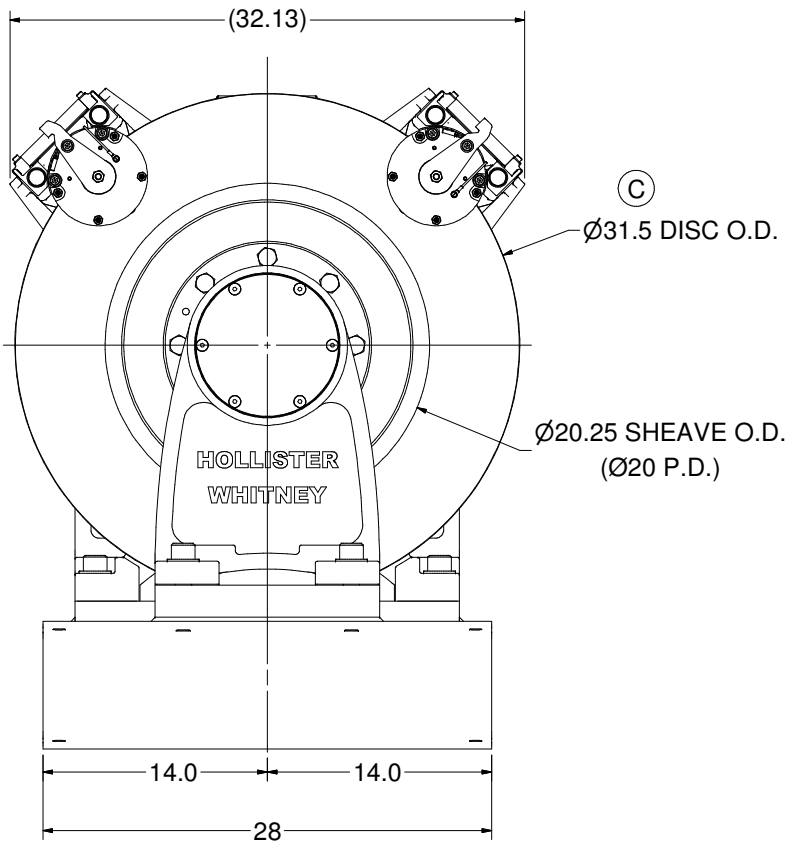
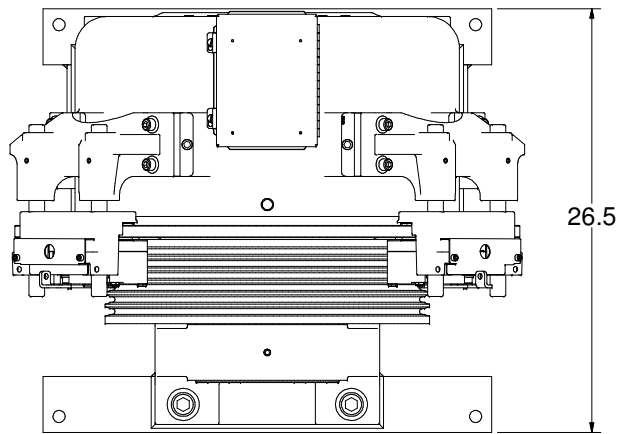
2:1 WINDINGS USED IN 1:1 APPLICATIONS (1500 LBS CAP.)						
MACHINE #	WINDING P/N	EFFICIENCY (%)	SIZE (mm)	VOLTAGE (Vac)	MACHINE SPEED (rpm)	CAR SPEED 20" (fpm)
GL171-35L	GL170-170-350	93.9	170	170	178.3	933
GL171-35H	GL170-360-350	94	170	360	178.3	933

Weight: 2342.01 lbmass

MACHINE REQUIRES TWO (2) PRIMARY SERVICE BRAKES AND ONE (1) ROPE GRIPPER OR TWO (2) ADDITIONAL BRAKES FOR EMERGENCY SERVICE

L	EFFICIENCY UPDATE, #673	LTL	9/19/14	H	ADD EFFICIENCY TO WINDING CHART, PUR #592	LTL	4/18/13
K	REMOVE GL100-008, #648	LTL	5/20/14	G	GL171-095 WAS GL100-095, PUR #565	LTL	2/4/13
J	BRAKE UPDT, 1" BOLTS TO SHCS, ADD THRU BOLT, #608	LTL	8/21/13	H	UPDATE, INCREASED DISC & MACHINE HT, PUR #496	LTL	6/28/12
C	ADD GL171-40L, UPDATE BRAKES PUR #493	LTL	5/9/12	B	PRODUCTION RELEASE, PUR #470	LTL	10/26/11

F		ADD WHEEL & WINDING OPTIONS, PUR #554		LTL	12/28/12	HOLLISTER-WHITNEY ELEVATOR CO. TITLE GEARLESS MACHINE, 2000# MAX CAP. 1:1 ROPED	DRAWN BY: LTL SCALE: NA MATERIAL: C DATE: 9/14/2011	DIMENSIONAL TOL. 1 PLACE ±0.01; 2 PLACE ±0.005; 3 & 4 PLACE ±0.001; ANGLES ±0.1 REF., OPEN, (NOMINAL) ±0.0156
E		REMOVE GUARD (NOW SEPARATE ITEM), PUR #542		LTL	11/6/12			
D		UPDATE BRAKES, PUR #513		LTL	7/20/12			
C		UPDATE, INCREASED DISC & MACHINE HT, PUR #496		LTL	6/28/12			
B		ADD GL171-40L, UPDATE BRAKES PUR #493		LTL	5/9/12	SEE PARTS LIST		
A		PRODUCTION RELEASE, PUR #470		LTL	10/26/11			GL171



Weight: 2342.01 lbmass

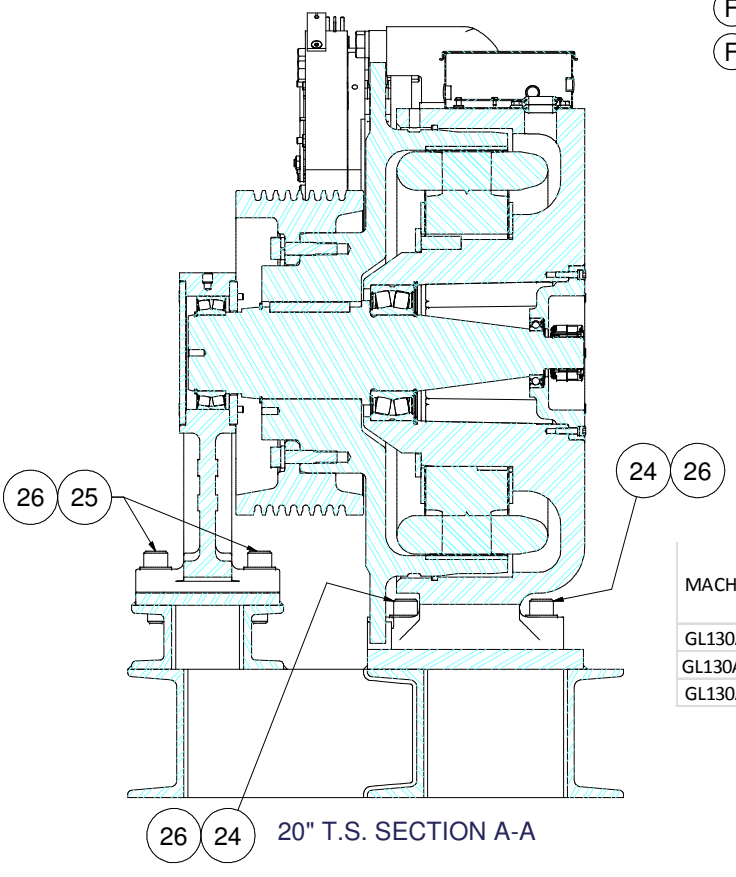
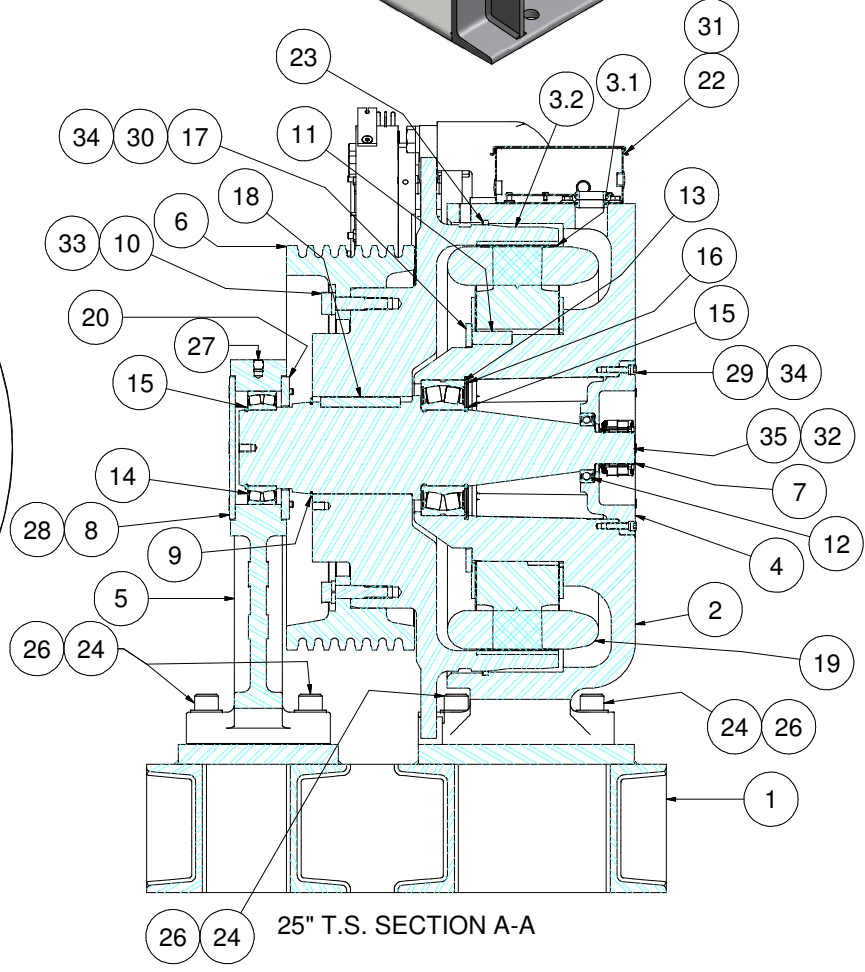
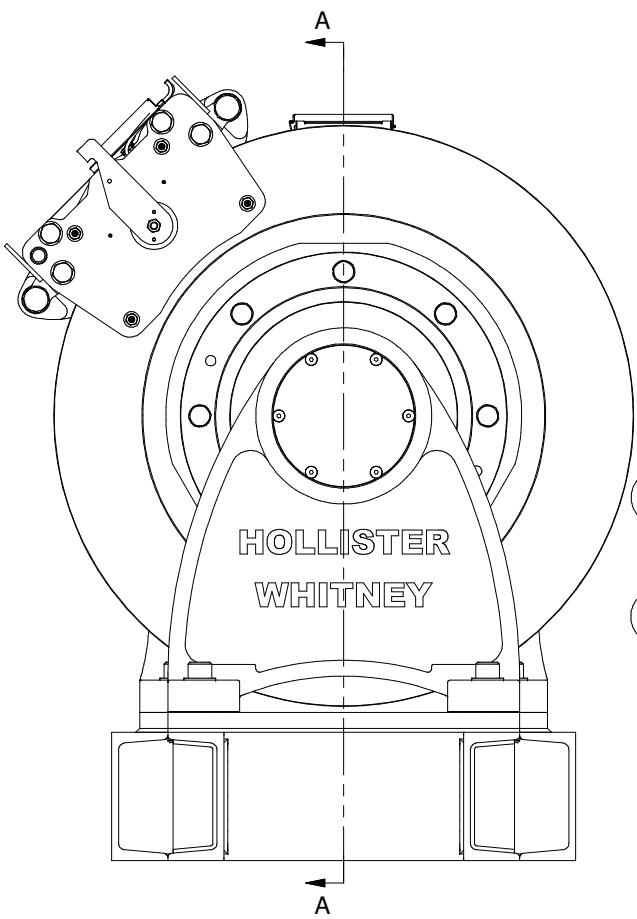
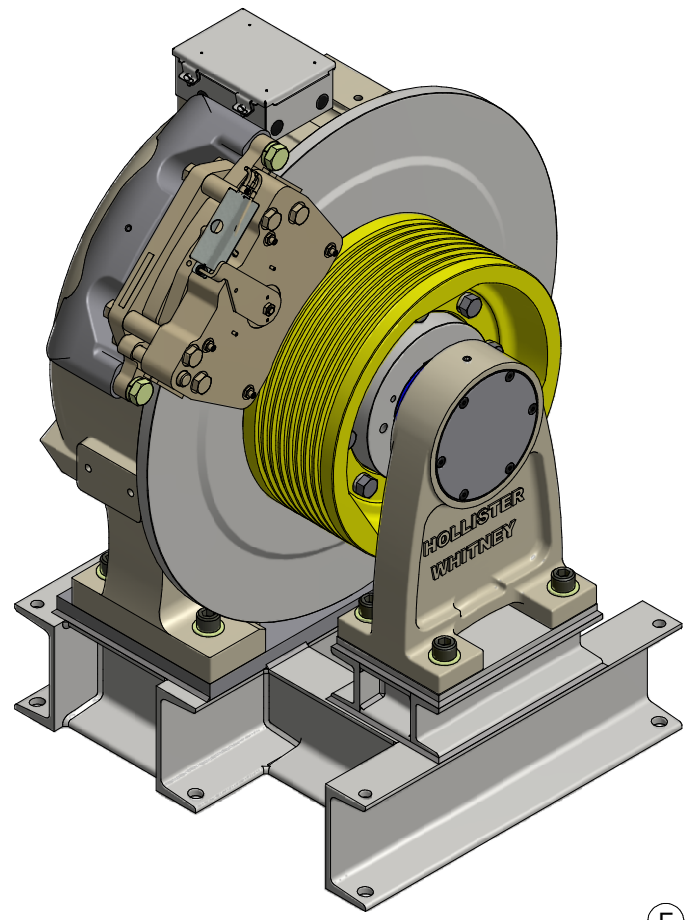
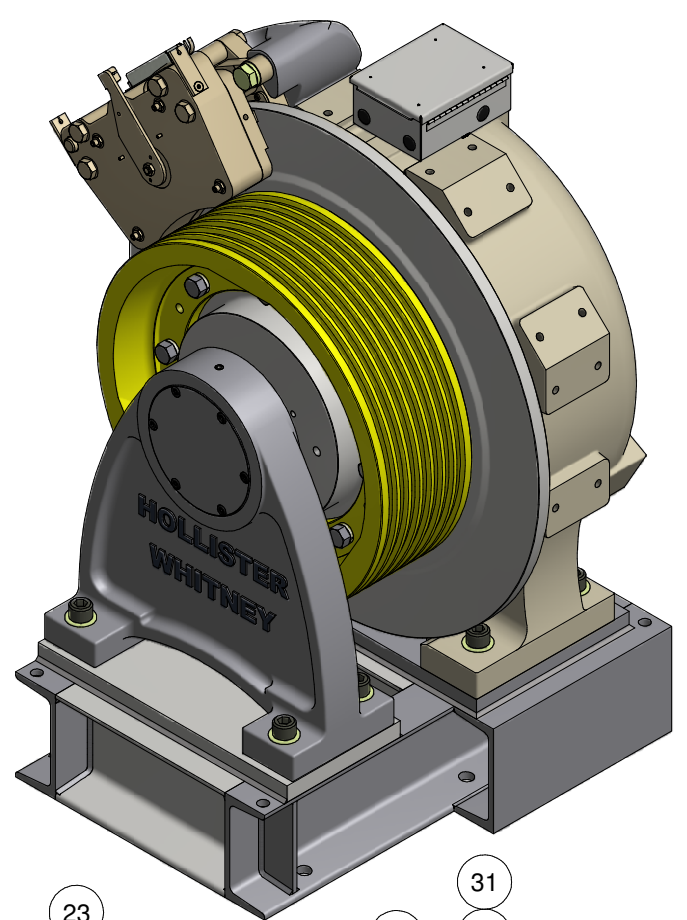
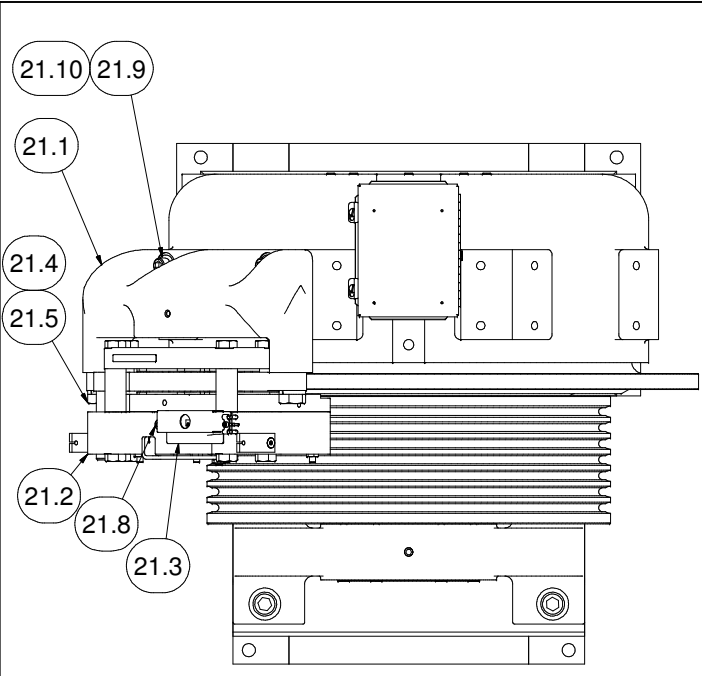
HOLLISTER-WHITNEY
 ELEVATOR CO.
 TITLE GEARLESS MACHINE, 2000# MAX CAP. 1:1
 ROPED

DRAWN BY: LTL
 SCALE: NA
 MATERIAL: SEE OTHER SIDE

DIMENSIONAL TOL.
 1 PLACE ±0.01; 2 PLACE ±0.005;
 3 & 4 PLACE ±0.001; ANGLES ±0.1°
 REF., OPEN, (NOMINAL) ±0.0156

SEE OTHER SIDE FOR REVISIONS
 SHEET SIZE: C
 DATE: 9/14/2011

GL171



ITEM	QTY	PART NUMBER	DESCRIPTION
1	1	GL130AB-01	FINISHING BASE, GL130A, 25" T.S. 2000 lb Cap.
	1	GL130AB-03	FINISHING BASE, GL130A, 20" T.S. 2500 lb Cap.
2	1	GL130A-001	BASE HOUSING, MOTOR #GL130A
	1	GL130A-002	ROTOR ASSEMBLY - #GL130A, 25" T.S. 2000 lb Cap.
3	1	GL130A-002-1	ROTOR ASSEMBLY - #GL130A, 20" T.S. 2500 lb Cap.
	3.1	GL130A-004	ROTOR - GL130A, 25" T.S.
	1	GL130A-004-1	ROTOR - GL130A, 20" T.S.
	3.2	GL260-099	PERMANENT MAGNET - #GL260 & GL130A MOTORS
4	1	GL130A-005	BEARING CAP
5	1	GL185-006	OUTBOARD STAND, 25" T.S. 2000 lb Cap.
	1	GL171-006	OUTBOARD STAND, 20" T.S. 2000 lb Cap.
6	1	GL185-008	SHEAVE, 25"
	1	GL130A-008	SHEAVE, 20"
7	1	GL130A-018	MAIN SHAFT - GL130A 1:1 MACHINE
8	1	GL185-019	END CAP
9	1	GL185-020	RETAINING RING - ROTOR
10	8	GL185-073	BODY BOLT
11	1	GL100-088	KEY - STATOR CORE TO BASE
12	1	GL185-089	BEARING, SEALED SR DEEP GROOVE BALL
13	1	GL130-090	SEALED SPHERICAL ROLLER BEARING
14	1	GL185-090	BEARING, SEALED SPHERICAL ROLLER
15	2	GL130-092	RETAINING RING - SHAFT
16	1	GL130-093	RETAINING RING - HOUSING
17	1	GL185-094	CLAMP RING - STATOR ASSEMBLY
18	1	GL185-095	KEY - MAIN SHAFT TO ROTOR
19	1	GL130A-100	WINDING ASSEMBLY
20	1	GL185-104	CAP
21	1	GL185-143	DISC BRAKE (MAYR 10) ASSEMBLY
	21.1	143-001	BRAKE BASE
	21.2	GL185-143-115	MAYR #10: RSD 10/894.210.03
	21.3	143-003	ELECTRICAL COVER
	21.4	2	1" WASHER Helical Spring Lock Washers
	21.5	4	1-8 UNC - 3.25 Hex Cap Screw
	21.6	4	5/8" WASHER STANDARD WASHER
	21.7	4	5/8 - 11 UNC - 2.5 HEX HEAD CAP SCREW
	21.8	4	M10 - 1.5 - 12 mm SOCKET HEAD CAP SCREW
22	1	GL100-159	HOFFMAN ELECTRICAL ENCLOSURE
23	1	GL100-165-1	FELT DUST SEAL
	24	8	1-8 UNC - 4 SOCKET HEAD CAP SCREW - GL130A
	4	1-8 UNC - 4 SOCKET HEAD CAP SCREW - GL130A1	
25	4	1-8 UNC - 3.5 SOCKET HEAD CAP SCREW - GL130A1	
26	8	1 WASHER SAE WASHER	
27	1	5/8-11 UNC x 0.625 Set Screw - Flat Point	
28	6	3/8-16 UNC x 4 FLAT HEAD CAP SCREWS	
29	8	3/8 - 16 UNC x 1.5 SOCKET HEAD CAP SCREW	
30	6	3/8 - 16 UNC x 1.25 SOCKET HEAD CAP SCREW	
31	4	3/8-16 UNC x 0.5 WHIZ BOLT	
32	4	No. 8 - 32 UNC - 1/4 Socket Head Cap Screw	
33	8	13/16 WASHER Heavy Helical Spring Lock Washers(Inch Series)	
34	14	3/8 Lock Washers High-Collar Helical Spring Lock Washers	
35	1	ECN 113 52810061 ENCODER	

F
F
F

H E

MACHINE #	WINDING P/N	COIL/WINDING EFFICIENCY (%)	FRAME/MAGNET SIZE (mm)	VOLTAGE (Vac)	MACHINE SPEED (RPM)	CAR SPEED 20" (fpm)	CAR SPEED 25" (fpm)
GL130A-20L	GL130A-170-200	87	130A/130	170	38.2	200	250
GL130A-20H	GL130A-360-200	87	130A/130	360	38.2	200	250
GL130A-40L	GL130A-170-400	88	130A/130	170	76.4	400	500

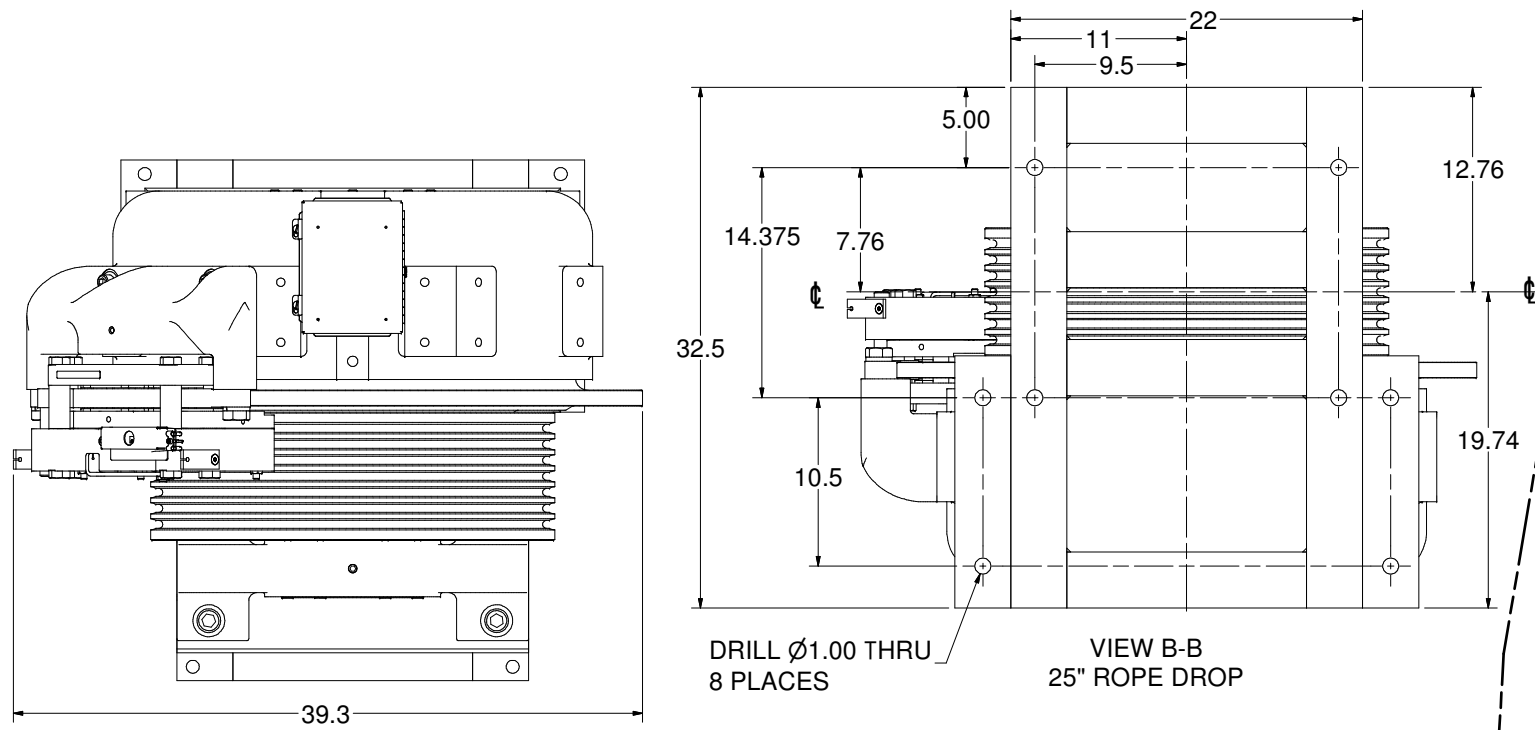
Max. Est. Weight: 3823.38 lbmass

HOLLISTER-WHITNEY
ELEVATOR CO.

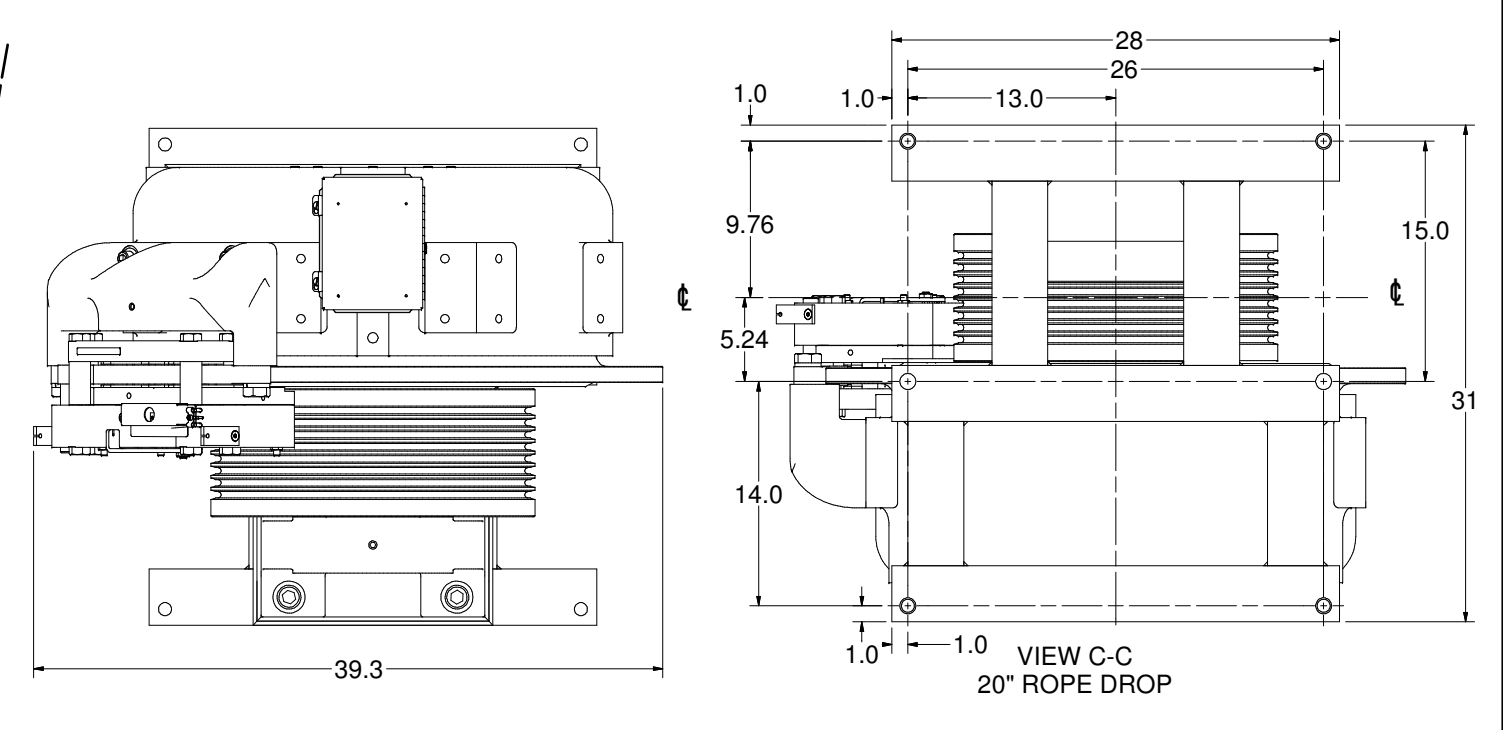
GEARLESS MACHINE, 2500# CAP w/ 20" TW,
2000# CAP w/25" TW; 1:1 ROPED

REV	DESCRIPTION	DATE	BY	CHKD	SCALE	MATERIAL	DIMENSIONAL TOL.
F	UPDATE 1" BOLTS TO SHCS & LENGTH, PUR #608	8/13/13	LTL				1 PLACE ±0.01, 2 PLACE ±0.005
E	ADD EFFICIENCY TO WINDING CHART, PUR #592	4/18/13	LTL				3/4 PLACE ±0.001, ANGLES ±0.1° REF. OPEN, (NOMINAL) ± 0.0159
D	GL100-159 LOCATION UPDATE, PUR #565	10/26/12	LTL				
C	GL100-159 WAS GL185-159, PUR #538	10/26/12	LTL				
B	UPDATE BRAKE, REMOVE 1 BRAKE, PUR #513	9/5/12	LTL				
G	UPDATE BASE FOR GL130A1, PUR #610	9/7/13	LTL				
A	ADD GL130A-40L MACHINE, PUR #493	5/9/12	LTL				

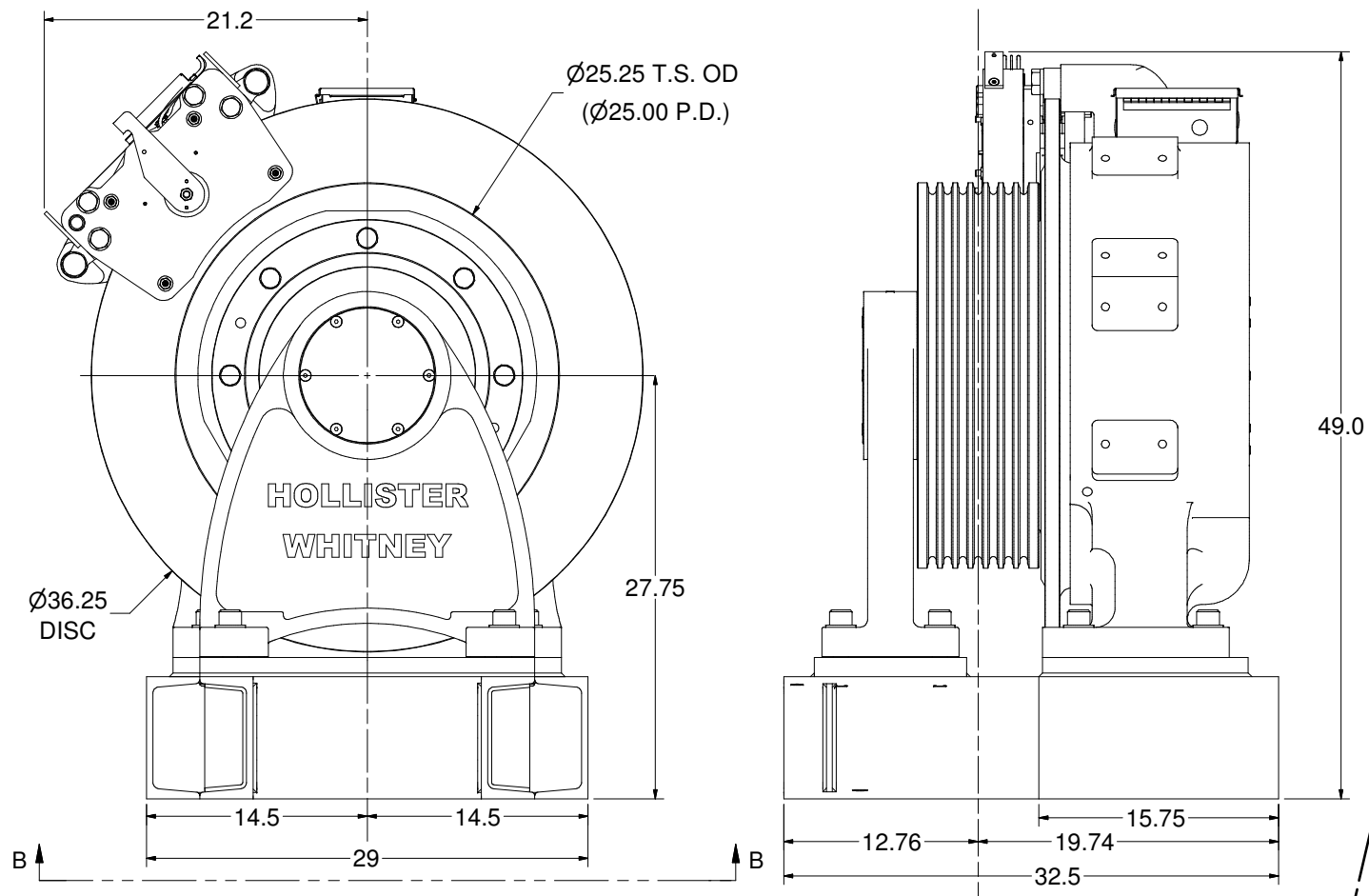
GL130A



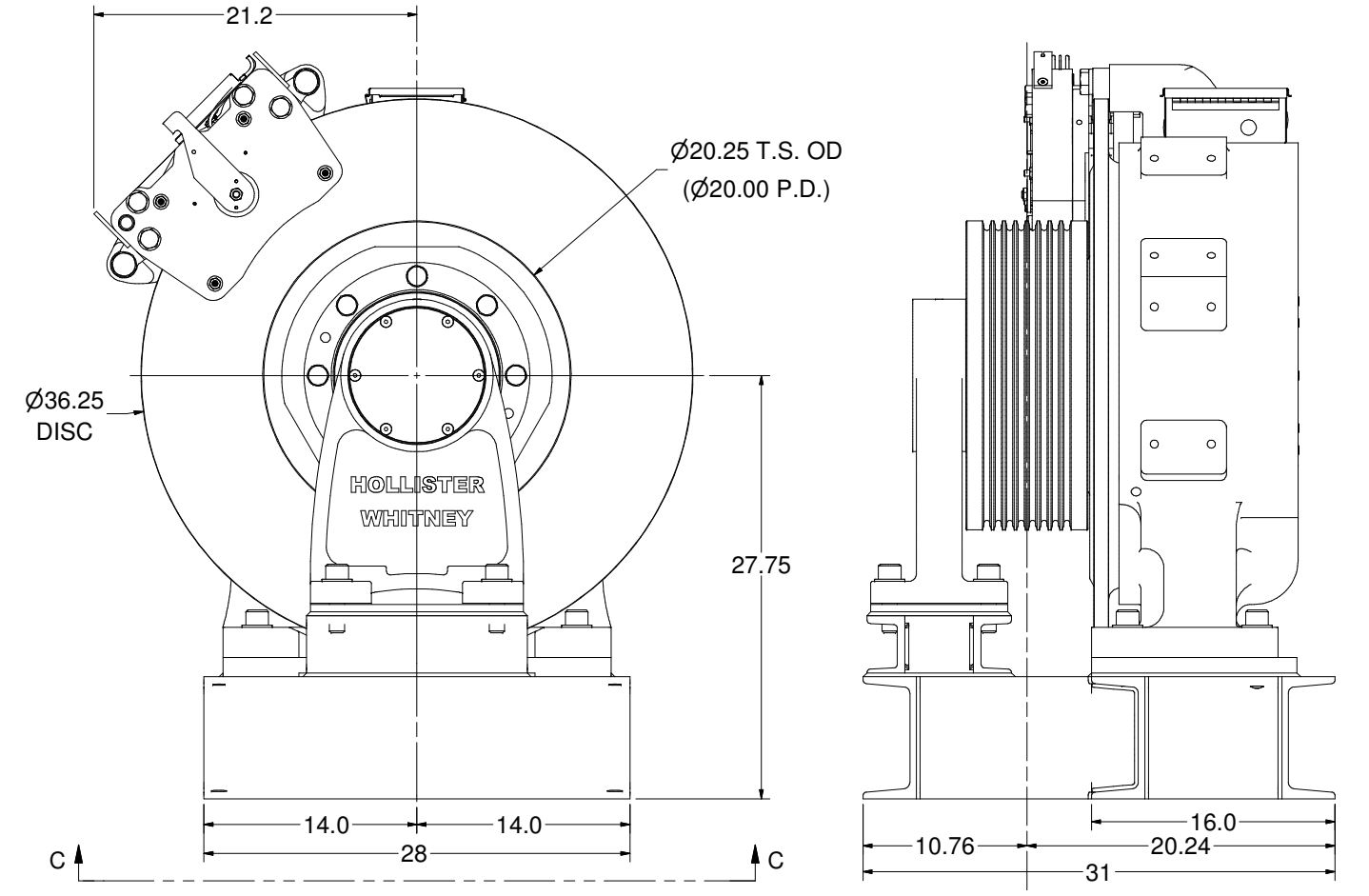
DRILL Ø1.00 THRU 8 PLACES
VIEW B-B
25" ROPE DROP



DRILL Ø1.00 THRU 8 PLACES
VIEW C-C
20" ROPE DROP



25" SHEAVE
2000# CAP. MAX
GL130A Mass: 3828 lbmass

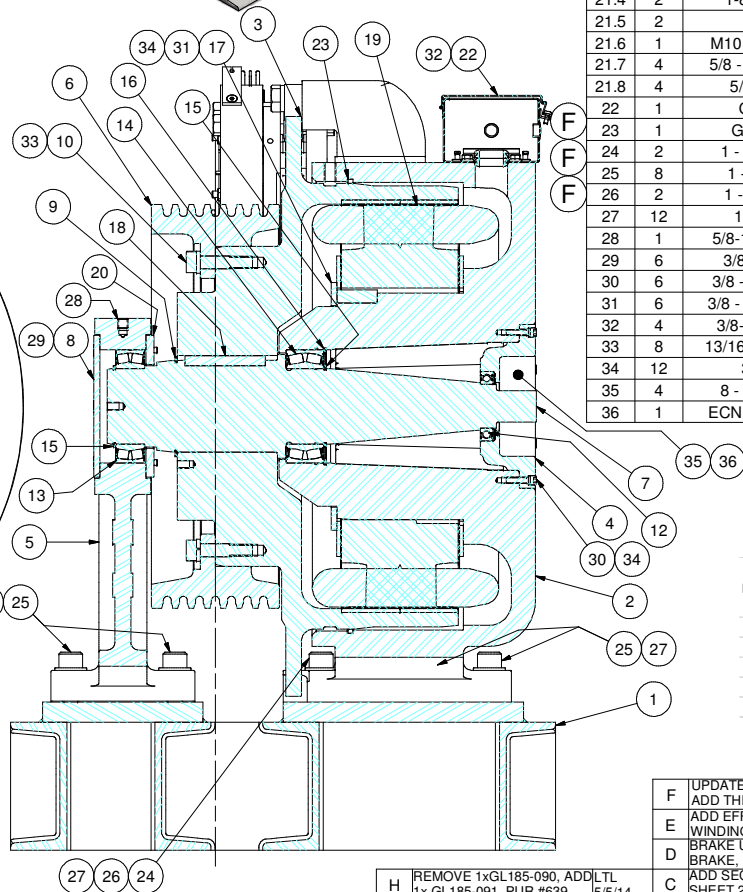
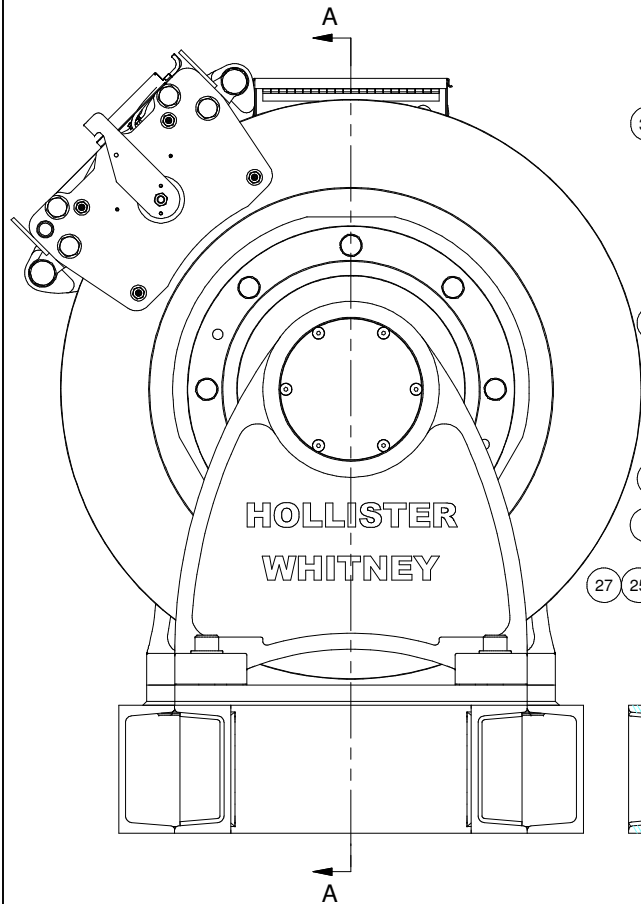
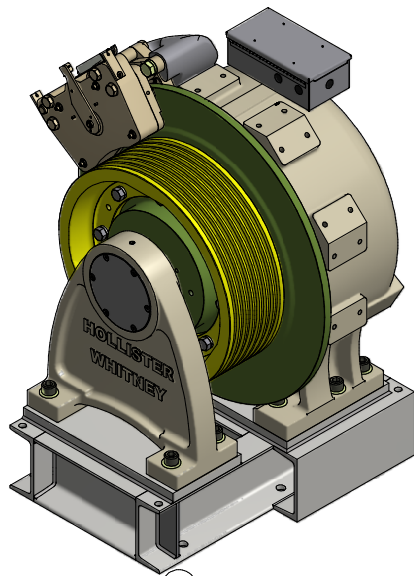
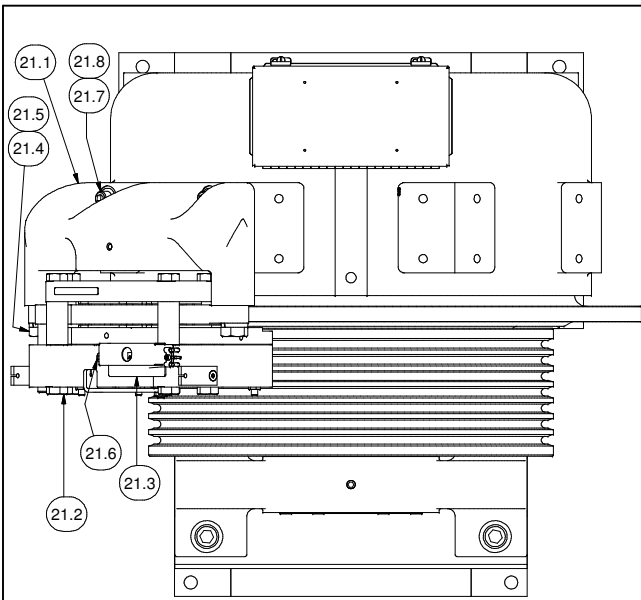


20" SHEAVE
2500# CAP. MAX
GL130A1 Mass: 3429 lbmass

Max. Est. Weight: 3823.38 lbmass
HOLLISTER-WHITNEY
ELEVATOR CO.
GEARLESS MACHINE, 2500# CAP w/ 20" TW,
2000# CAP w/25" TW; 1:1 ROPED

DRAWN BY	LTL	SCALE	MATERIAL	SEE PARTS LIST OTHER SIDE	DIMENSIONAL TOL: 1 PLACE ±0.01, 2 PLACE ±0.005 3&4 PLACE ±0.001, ANGLES ±0.1° REF., OPEN, (NOMINAL) ± 0.0150
SHEET SIZE	D	DATE	11/11/2011	GL130A	

SEE OTHER SIDE FOR UPDATES



SECTION A-A

H	REMOVE 1xGL185-090, ADD 1x GL185-091, PUR #639	LTL	5/5/14
G	ADD 2ND LOCKRING, GL260-005 WAS GL100-005, PUR #610	LTL	9/23/13

Parts List

ITEM	QTY	PART NUMBER	DESCRIPTION
1	1	GL185B-01	FINISHING BASE, GL185
2	1	GL185-001	BASE HOUSING, MOTOR #GL185
3	1	GL185-002	ROTOR ASSEMBLY - MOTOR #GL185
4	1	GL260-005	BEARING CAP
5	1	GL185-006	OUTBOARD STAND, AC GEARLESS
6	1	GL185-008	SHEAVE, 25"
7	1	GL185-018	MAIN SHAFT - GL185 1:1 MACHINE
8	1	GL185-019	END CAP
9	1	GL185-020	RETAINING RING - ROTOR
10	8	GL185-073	BODY BOLT
11	1	GL100-088	KEY - STATOR CORE TO BASE
12	1	GL185-089	BEARING, SEALED SINGLE ROW DEEP GROOVE BALL
13	1	GL185-090	BEARING, SEALED SPHERICAL ROLLER
14	1	GL185-091	BEARING, SEALED SPHERICAL ROLLER
15	2	GL130-092	RETAINING RING - SHAFT
16	1	GL100-093	RETAINING RING - HOUSING
17	1	GL185-094	CLAMP RING - STATOR ASSEMBLY
18	1	GL185-095	KEY - MAIN SHAFT TO ROTOR
19	1	GL185-100	WINDING ASSEMBLY (SEE OPTION CHART BELOW)
20	1	GL185-104	CAP
21	1	GL185-143	DISC BRAKE (MAYR 10) ASSEMBLY
21.1	1	143-001	BRAKE BASE
21.2	1	GL185-143-115	MAYR 10 BRAKE; 8211258, 52V BRAKE, 104V O.E.
21.3	1	143-003	COVER - MAYR #10 ELECTRICAL
21.4	2	1-8 UNC - 3.25	HEX HEAD CAP SCREW
21.5	2	1"	LOCK
21.6	1	M10 x 1.5 x 12 mm	SHCS - METRIC
21.7	4	5/8 - 11 UNC x 2.5"	SOCKET HEAD CAP SCREW
21.8	4	5/8 WASHER	STANDARD WASHER
22	1	GL185-159	HOFFMAN ELECTRICAL ENCLOSURE, A12064CH MODIFIED
23	1	GL100-165-1	FELT DUST SEAL
24	2	1 - 8 UNC x 5.5"	SOCKET HEAD CAP SCREW
25	8	1 - 8 UNC x 4"	SOCKET HEAD CAP SCREW
26	2	1 - 8 UNC NUT	HEAVY HEX NUT
27	12	1" WASHER	SAE WASHER
28	1	5/8-11 UNC x 0.63	SET SCREW - FLAT POINT
29	6	3/8-16 UNC x 4	FLAT HEAD CAP SCREWS
30	6	3/8 - 16 UNC x 1.5	SOCKET HEAD CAP SCREW
31	6	3/8 - 16 UNC x 1.25	SOCKET HEAD CAP SCREW
32	4	3/8-16 UNC x 0.5	WHIZ BOLT
33	8	13/16 HEAVY LOCK	HEAVY HELICAL SPRING LOCK WASHER
34	12	3/8 LOCK	HI-COLLAR HELICAL SPRING LOCK WASHER
35	4	8 - 32 UNC - 1/4	CAP SCREW
36	1	ECN 113 52810061	50mm HEIDENHAIN ENCODER

MACHINE #	WINDING P/N	COIL/WINDING EFFICIENCY (%)	FRAME/MAGNET SIZE (mm)	VOLTAGE (Vac)	MACHINE SPEED (RPM)	CAR SPEED (fpm)
GL185-35L	GL185-170-350	90	185	170	53.5	350
GL185-35H	GL185-360-350	90	185	360	53.5	350
GL185-50L	GL185-170-500	90	185	170	76.4	500
GL185-50H	GL185-360-500	90	185	360	76.4	500
GL185-70L	GL185-170-700	90	185	170	107.0	700

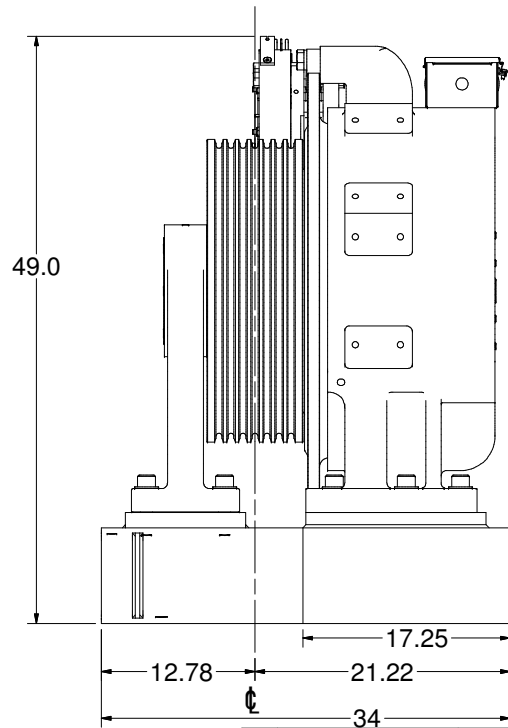
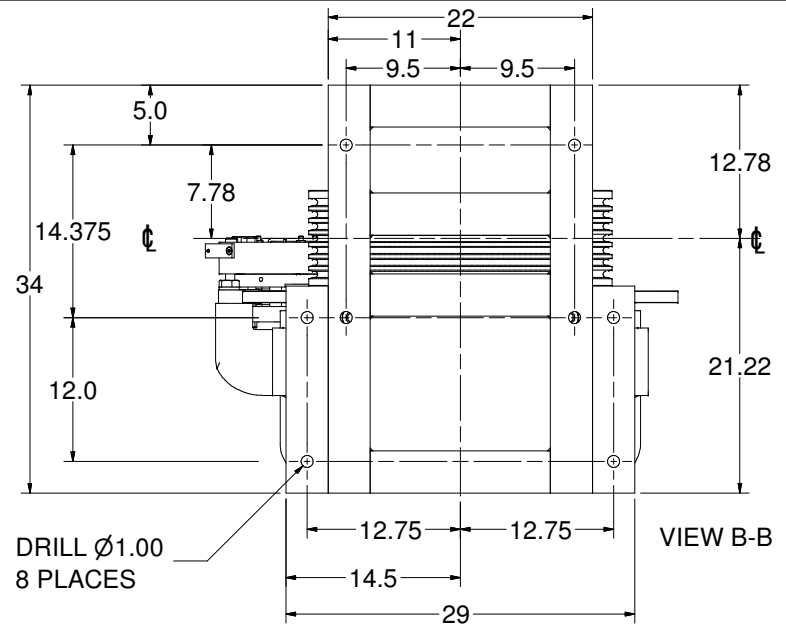
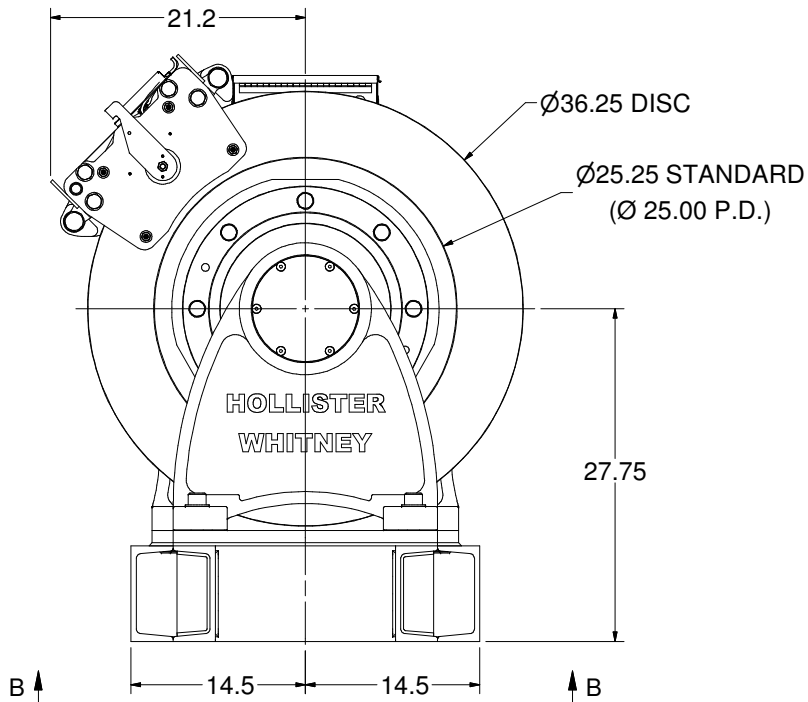
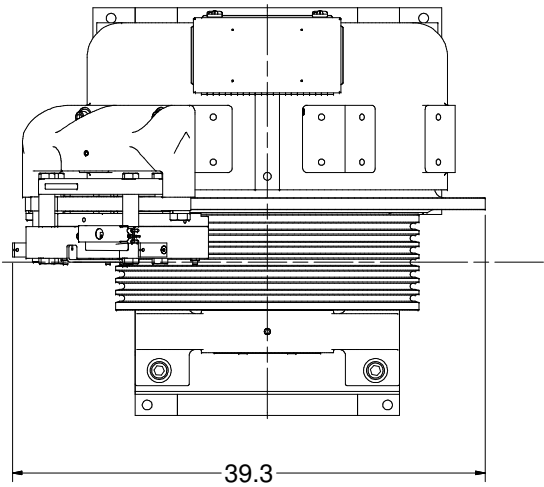
Weight: 4278.41 lbmass

F	UPDATE BOLTS TO SHCS, ADD THRU BOLT PUR #608	LTL	8/13/13
E	ADD EFFICIENCY TO WINDING CHART, PUR #592	LTL	4/18/13
D	BRAKE UPDATE, REMOVE BRAKE, PUR #513	LTL	9/5/12
C	ADD SECOND BRAKE, SHEET 2, PUR #469	LTL	10/26/11
B	ADD GL185-020, UPDATE ITEMS 5, 7, 8, 19, PUR #458	LTL	9/15/11
A	RELEASE FOR PRODUCTION, PUR #453	LTL	8/18/11

HOLLISTER-WHITNEY
ELEVATOR CO.

TITLE
GEARLESS MACHINE (3000 LBS MAX CAPACITY); 1:1 ROPED

DRAWN BY	SCALE	MATERIAL	DIMENSIONAL TOL.
LTL	NA	SEE PARTS LIST	1 PLACE ±0.01 2 PLACE ±0.005 3 & 4 PLACE ±0.001 ANGLES ±0.1°
SHEET SIZE	C	DATE	REF - OPEN (NOMINAL) READING
		8/8/2011	GL185



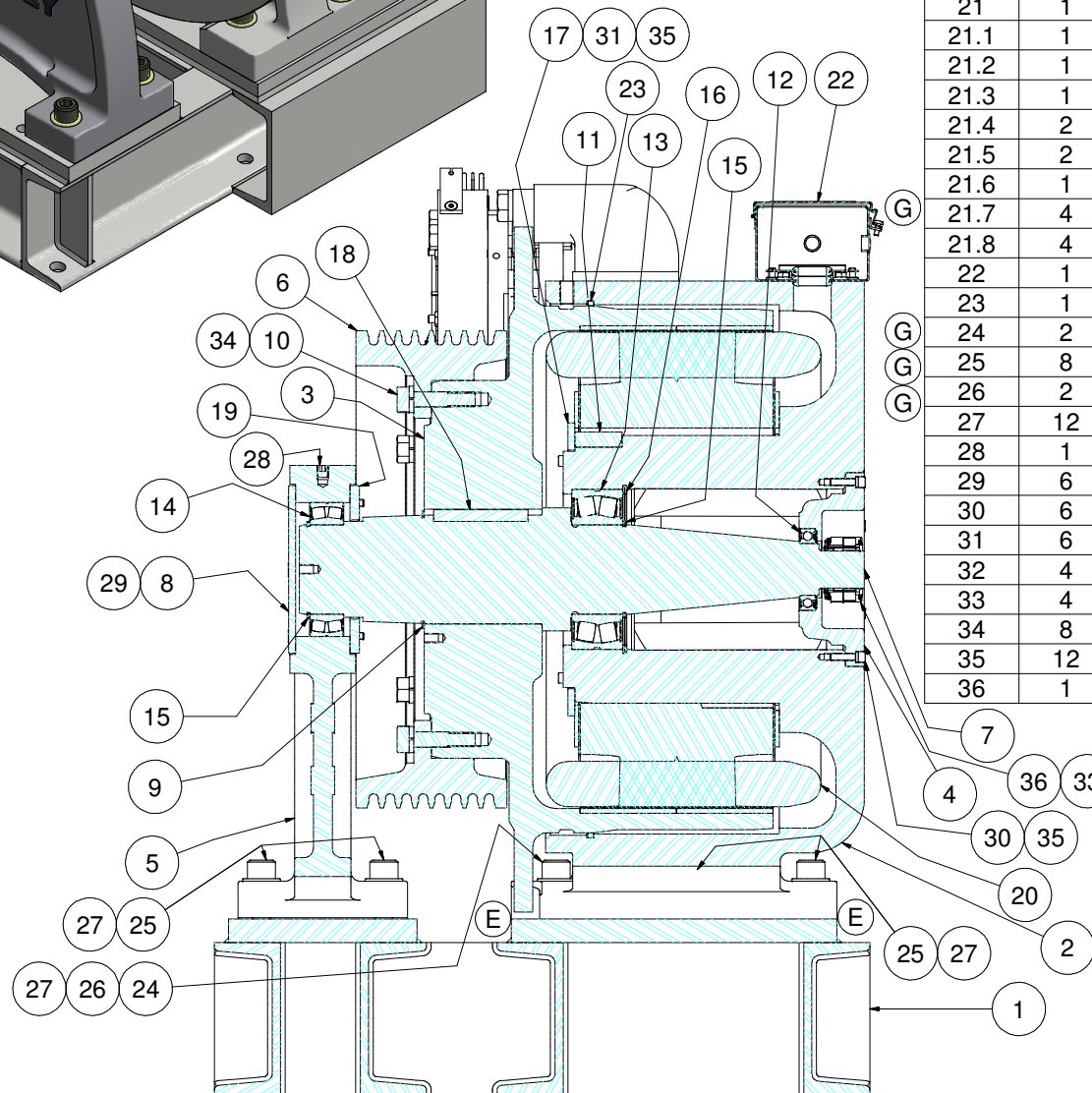
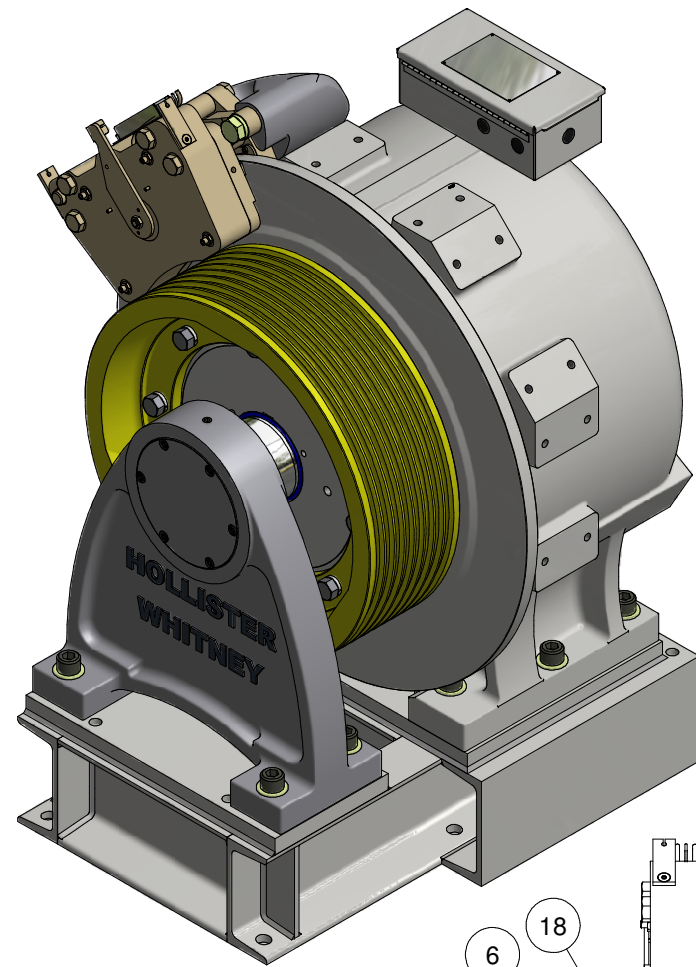
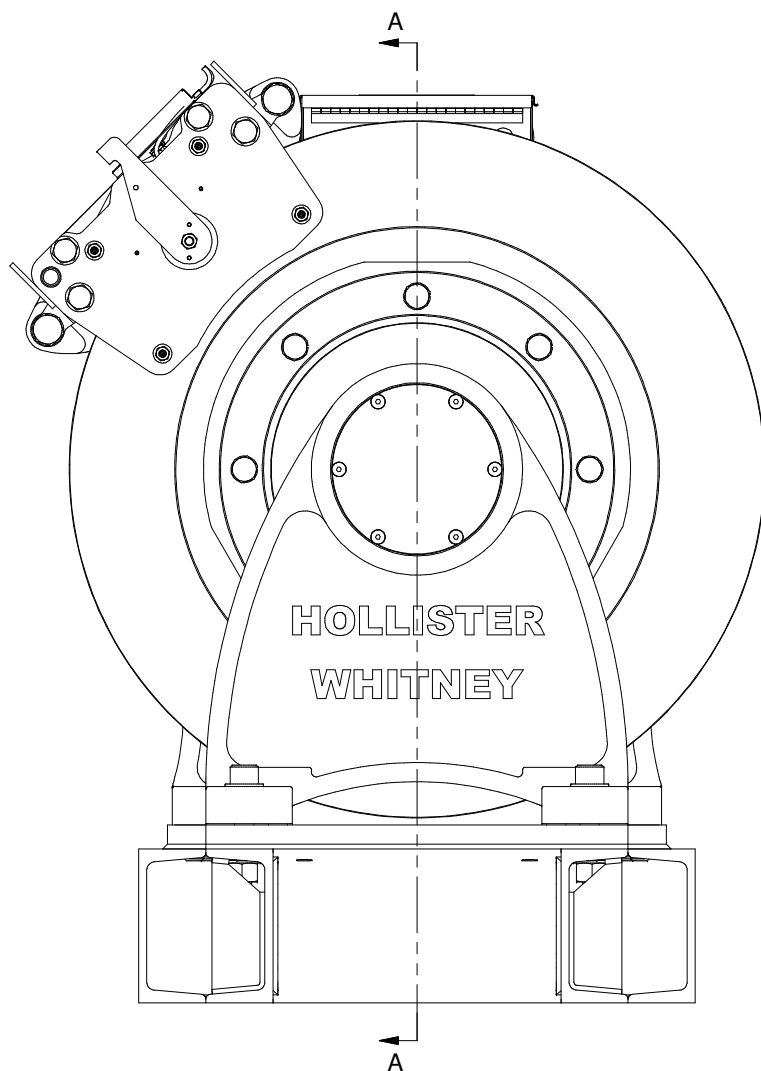
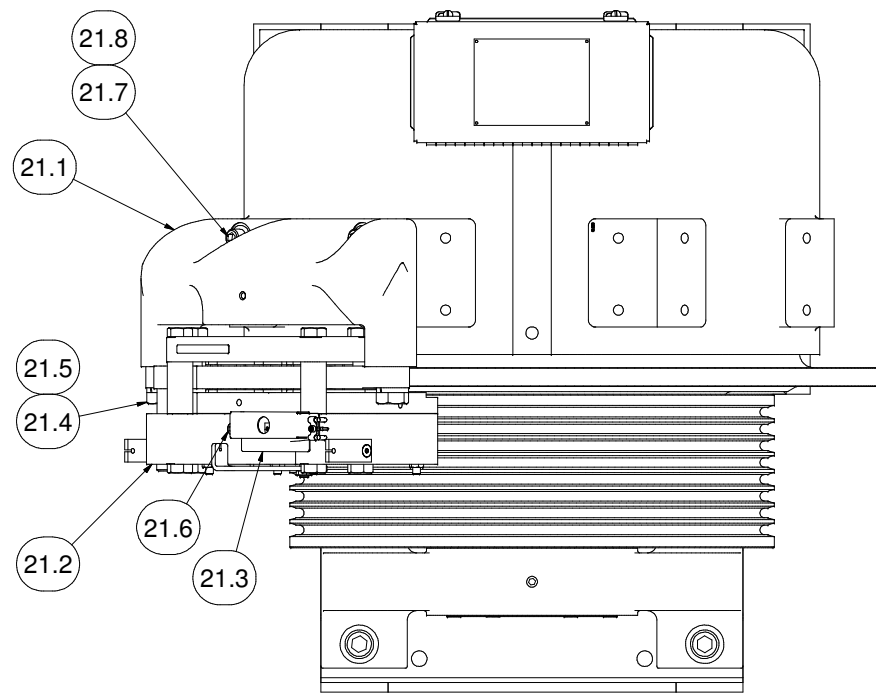
Weight: 4278.41 lbmass

HOLLISTER-WHITNEY
ELEVATOR CO.
TITLE GEARLESS MACHINE (3000 LBS MAX CAPACITY); 1:1 ROPED

DRAWN BY	SCALE	MATERIAL	DIMENSIONAL TOL.
LTL	NA	SEE PATS LIST	1 PLACE ±0.01 2 PLACE ±0.005 3 & 4 PLACE ±0.001 ANGLES ±0.1° REF - OPEN (NOMINAL) READING
SHEET SIZE	C	DATE	8/8/2011

SEE OTHER SIDE FOR REVISIONS

GL185



SECTION A-A

Parts List			
ITEM	QTY	PART NUMBER	DESCRIPTION
1	1	GL260B-01	FINISHING BASE, GL260
2	1	GL260-001	BASE HOUSING, MOTOR #GL260
3	1	GL260-002	ROTOR ASSEMBLY - MOTOR #GL260
4	1	GL260-005	BEARING CAP
5	1	GL185-006	OUTBOARD STAND, AC GEARLESS
6	1	GL185-008	SHEAVE, 25"
7	1	GL260-018	MAIN SHAFT
8	1	GL185-019	END CAP
9	1	GL185-020	RETAINING RING - ROTOR
10	8	GL185-073	BODY BOLT
11	1	GL100-088	KEY - STATOR CORE TO BASE
12	1	GL185-089	BEARING, SEALED SR DEEP GR. BALL
13	1	GL130-090	SEALED SPHERICAL ROLLER BEARING
14	1	GL185-090	BEARING, SEALED SPHERICAL ROLLER
15	2	GL130-092	RETAINING RING - SHAFT
16	1	GL130-093	RETAINING RING - HOUSING
17	1	GL185-094	CLAMP RING - STATOR ASSEMBLY
18	1	GL185-095	KEY - MAIN SHAFT TO ROTOR
19	1	GL185-104	CAP
20	1	GL260-100	WINDING ASSEMBLY - 40 POLE
21	1	GL185-143	DISC BRAKE (MAYR 10) ASSEMBLY
21.1	1	143-001	BRAKE BASE
21.2	1	GL185-143-115	MAYR #10; RSD 10/894.210.03
21.3	1	143-003	COVER - MAYR #10 ELECTRICAL
21.4	2	1-8 UNC - 3.25	Hex Cap Screw
21.5	2	1 WASHER	Helical Spring Lock Washers
21.6	1	M10 x 1.5 x 12 mm	SHCS - METRIC
21.7	4	5/8 - 11 UNC x 2.5"	SOCKET HEAD CAP SCREW
21.8	4	5/8 WASHER	STANDARD WASHER
22	1	GL185-159	HOFFMAN BOX, A12064CH MODIFIED
23	1	GL100-165-1	FELT DUST SEAL
24	2	1 - 8 UNC x 5.5"	SOCKET HEAD CAP SCREW
25	8	1 - 8 UNC x 4"	SOCKET HEAD CAP SCREW
26	2	1 - 8 UNC NUT	HEAVY HEX NUT
27	12	1" WASHER	SAE WASHER
28	1	5/8-11 UNC x 0.625	HALF DOG SET SCREW
29	6	3/8-16 UNC x 4	FLAT HEAD CAP SCREWS
30	6	3/8 - 16 UNC - 1 1/2	SOCKET HEAD CAP SCREW
31	6	3/8 - 16 UNC - 1 1/4	SOCKET HEAD CAP SCREW
32	4	3/8-16 UNC x 0.5	WHIZ BOLT
33	4	No. 8 - 32 UNC - 1/4	HEX HEAD CAP SCREW
34	8	13/16 WASHER	HEAVY LOCK WASHER
35	12	3/8 Lock Washers	HI-COLLAR LOCK WASHER
36	1	ECN 113 52810061	50mm HEIDENHAIN ENCODER

MACHINE #	WINDING P/N	COIL/WINDING EFFICIENCY (%)	FRAME/MAGNET SIZE (mm)	VOLTAGE (Vac)	MACHINE SPEED (RPM)	CAR SPEED (fpm)
GL260-35L	GL260-170-350	90	260	170	53.5	350
GL260-35H	GL260-360-350	90	260	360	53.5	350
GL260-50L	GL260-170-500	90	260	170	53.5	500
GL260-50H	GL260-360-500	90	260	360	53.5	500
GL260-70L	GL260-170-700	90	260	170	53.5	700

(F)

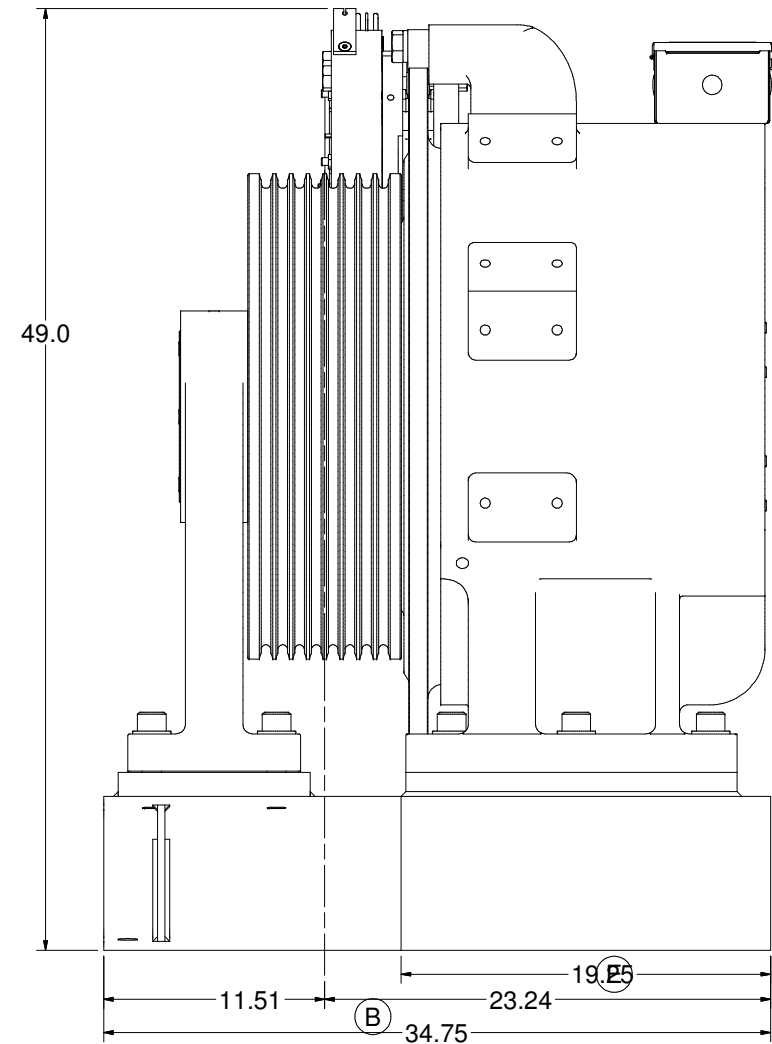
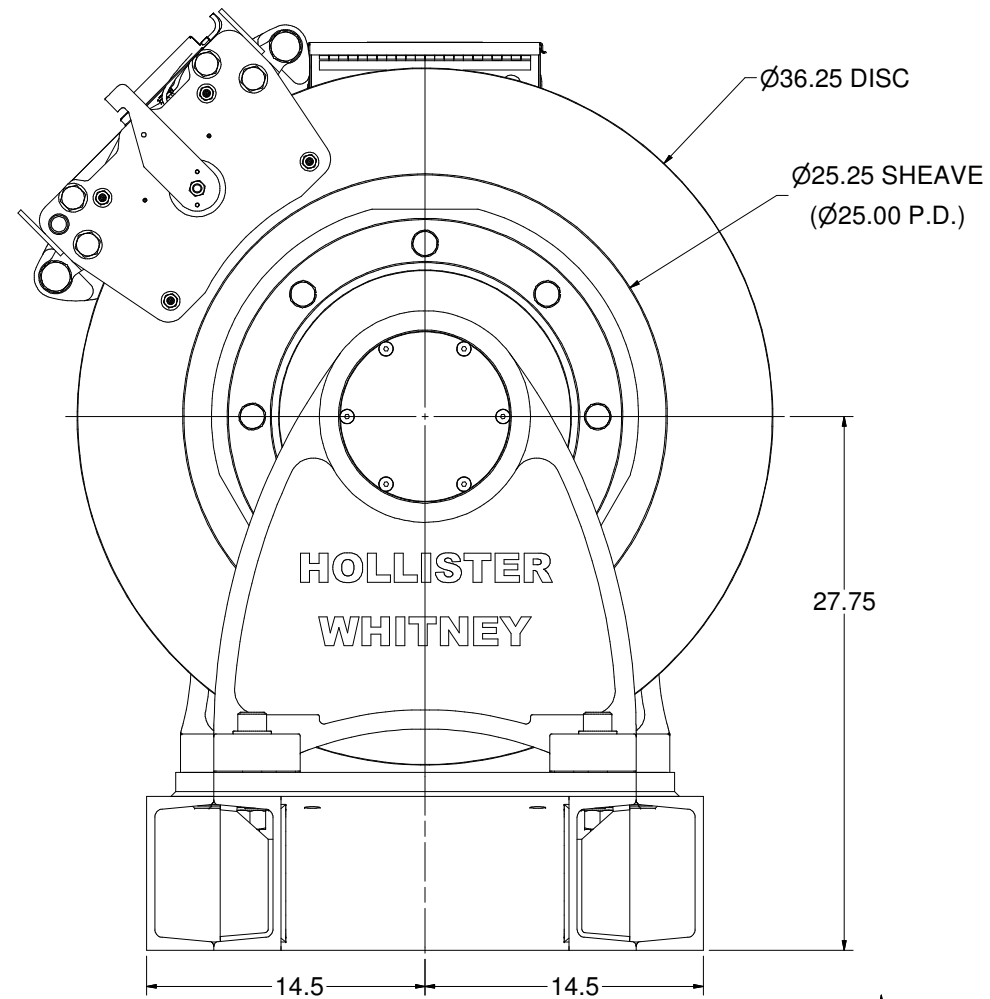
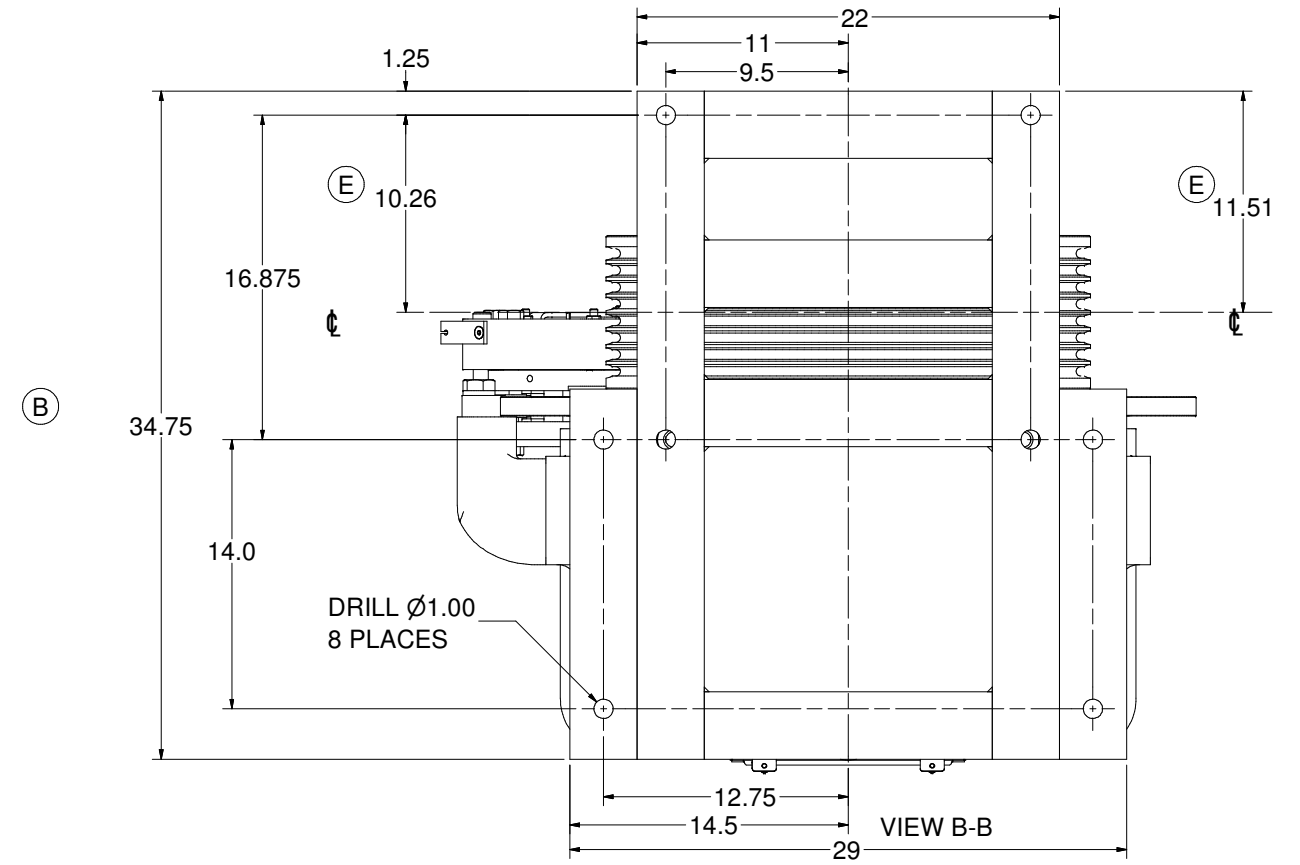
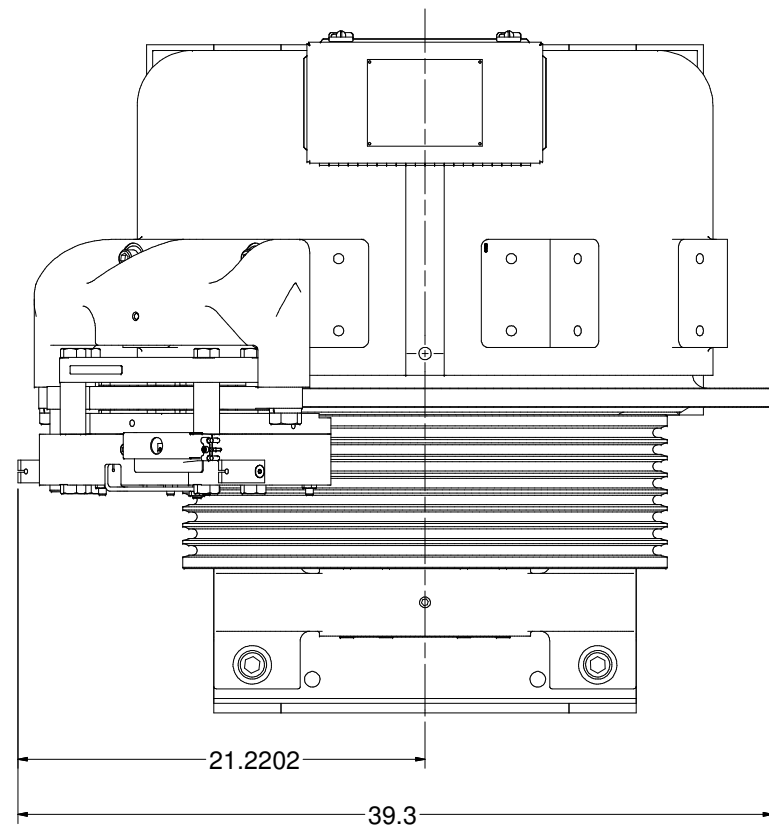
Weight: 4771.63 lbmass

F	ADD WINDING CHART, PUR #592	LTL	4/18/13
E	MOVE MACHINE C/L 0.5", PUR #579	LTL	3/5/13
D	BEARING HOUSING P/N WAS GL185-005, PUR #536	LTL	10/22/12
C	UPDATE BRAKE, REMOVE BRAKE, PUR #513	LTL	9/5/12
B	34.75" BASE WAS 36", PUR #502	LTL	8/27/12
A	CORRECT BRAKE ASSY QTY, PUR #478	LTL	1/11/12

HOLLISTER-WHITNEY
ELEVATOR CO.
TITLE GEARLES MACHINE, 4000# MAX CAP, 1:1 ROPED

UPDATE BOLTS TO SHCS, LTL	ADD THRU BOLTS, PUR #608	LTL	8/20/13
DATE	11/18/2011	SHEET SIZE	D

GL260



B ↑

Weight: 4771.63 lbmass

HOLLISTER-WHITNEY

ELEVATOR CO.

TITLE GEARLESS MACHINE, 4000# MAX CAP, 1:1
ROPED

DRAWN BY LTL NA SCALE MATERIAL SEE PARTS LIST DIMENSIONAL TOL.
1 PLACE ±0.01, 2 PLACE ±0.005
3/4 PLACE ±0.001, ANGLES ±0.1
REF. OPEN, (NOMINAL) ± 0.0150

SHEET D DATE 11/18/2011 GL260

SEE OTHER SIDE FOR
REVISIONS