

National Line Card

Products & Systems Solutions



Approach

Our goal is to deliver the outcomes that matter most to you—from more comfortable indoor environments to energy efficient operations. We take a consultative approach to understand your unique business objectives, gather data and information to make informed recommendations, and support you from implementation to validation.

Service & Solutions

Our capabilities include commercial systems, energy services & solutions, contracting, controls/building automation, rentals and service.



Building Services

Help reduce operating costs and extend the life of your equipment with planned, reliable, preventative and proactive scheduled maintenance and repair by Trane factory trained technicians.

- Service Agreements
 - Connected Mechanical Service Agreements
- Extended Warranty
- Quoted Repair Products



Digital Services

Leverage your data and Trane's analytics to create simple dashboards that can help you to understand performance of your building and its assets. Dashboards can help to find opportunities for increasing efficiency, decreasing energy use, and increasing productivity through system optimization.

- Connected Building Service Agreements
- Intelligent Services Agreements
- Secure remote access and building management with TraneConnect™



Intelligent Services

Trane Intelligent Services provides one-on-one consultative support to reduce energy use, manage operational costs, and optimize building performance. Take the guesswork out of understanding building data to achieve more comfortable spaces while meeting your financial and environmental goals.



Rental Services

24/7/365 local service, engineering expertise and an expansive fleet of rental products. Promptly provides temporary, scalable HVAC and power from standard applications to complex solutions

- Water-Cooled Chillers, Air-Cooled Chillers, Temporary Power, Cooling Towers, Packaged A/C Units, Air Handlers, Portable A/C Units



IAQ Services

Today there are more ways than ever to assess and manage indoor air quality, while keeping your goals for cost and sustainability in sight. Trane offers a variety of services, innovative technologies, and proven solutions for measuring and monitoring IAQ. We can help you align with air quality guidelines and recommendations set by the CDC, EPA, and ASHRAE.



Trane Creative Solutions

Customized Trane Equipment Modifications Including: Multizone Replacements, Water-Side Economizer Coils for Air-Cooled Chillers, Packaged Air-Cooled Ice Storage Systems, Acoustical Attenuation



Engineer and Contractor Resources

Trane is here to support, enable and educate Engineers and Contractors through comprehensive tools and resources, design and analysis tools, professional education and training, BIM and CAD drawings, and pre-engineered system solutions.

traneengineer.com | tranecontractors.com



Engineered Systems

- Comprehensive Chilled Water Systems
- Comprehensive Chiller- Heater Systems
- CoolSense® Integrated Outdoor Systems
- Intelligent Variable Air Systems
- Thermal Battery™ Systems
- Variable Refrigerant Flow (VRF) Systems
- Zoned Rooftop Systems



Energy Services

Trane enables more efficient, sustainable buildings by providing a single source for decarbonization and modernization solutions, programmatic implementation services, and financing and funding options. We use deep expertise and data driven approach to understand how energy impacts your unique situation, and partner to develop strategies to deliver your goals for carbon reduction, resiliency, and energy optimization.

Energy Solutions include:

Building modernization and automation | Lighting | Water Conservation | Renewables and Distributed Energy Resources | Funding, financing, and procurement programs

Trane is accredited by NAESCO as an Energy Services Provider (ESP), a U.S. DOE-qualified Energy Services Company (ESCO), and recognized by the Canadian Federal Buildings Initiative as a qualified bidder.

Building Automation



Tracer® SC+
Scalable building automation system solution with standard, open protocols



Pivot® Smart Thermostat
Wi-Fi & Ethernet thermostat for light commercial applications



Symbio®
Application Specific and Programmable Unit Controllers, Integrates with BACnet MSTP, BACnet/IP, BACnet/Zigbee, Lontalk & Modbus Protocols



Air-Fi® Zone Sensors
Flexible and reliable wireless sensors & system communications leveraging Air-Fi® Wireless (BACnet/Zigbee) technology. Sensors include temperature, humidity, CO₂ & occupancy

Building Management Systems



Tracer® Ensemble®
Enterprise level building management software for facility professionals



Tracer® Synchrony®
Tracer SC+'s built-in web based user interface software for building operators



Tracer® Concierge®
Light commercial control system with set-up wizard for installers and simple user interface for non-technical users



BAS Operator and Occupant Apps
Providing mobile access to service providers, building operators, and occupants

IAQ Solutions



Synexis
Provides a continuous application of DHP that can reduce airborne and surface pathogens, fungi and VOCs



TCACS
Trane Catalytic Air Cleaning System (TCACS) is an enhanced air filter containing 3 technologies: filtration, ultraviolet light, and a photocatalytic oxidation (PCO) process

Trane® / Mitsubishi Electric VRF & Ductless



N-Generation CITY MULTI®
Energy efficient air and water cooled, all electric VRF systems available in Standard, High Efficiency, and H2i® (Hyper-Heat); 6 - 36 Tons



HVRF
All electric, hydronic VRF system that uses refrigerant and water; Hybrid Branch Controller provides simultaneous heating and cooling; 6 - 36 Tons



Nv Series
Ductless system for maximum energy efficiency and quality control with precise zone control to distribute heating or cooling only to spaces in use; 0.5 - 5 Tons



P Series
Light commercial ductless system for superior comfort, flexibility and reliability with precise 1:1 outdoor to indoor connections for efficient zone management; 1 - 3.5 Tons



Indoor Units
A variety of indoor units available to meet any application and design requirements, including ceiling cassettes, wall mounted, concealed and more



LEV Kit
The power to connect Trane® / Mitsubishi Electric CITY MULTI® products to Trane Air Handlers; Allows for higher airflows, higher static pressure, larger capacity, customized products, and DOAS configurations

Computer Room Cooling



Single Circuit
Single circuit DX or CW; vertical floor mounted; 2 - 10 Ton; tandem compressor options; EC fan technology



Dual Circuit DX
Dual circuit DX or CW; vertical floor mounted; 5 - 80 Tons; EC fan technology



Ceiling Mounted
Ceiling Mounted DX or CW; 1 - 10 Tons; Independently circuited scroll compressors



In Server Row
In Row/rack DX or CW; 4 - 21 Tons; Largest CW capacity available, water side economizer on both models

Water-Cooled Portfolio Centrifugal Chillers



Model TACW
Oil-free; Cooling operation; 60 - 600 Tons; R-134a and R-513A



Agility® Model HDWA
175 - 425 Tons; Heating and Cooling capable; Up to 140°F HW; 60 Hz, 50 Hz; Symbio® 800 controller; uses either R-513A or R-134A



CentraVac® Model CVHE
3-Stage Compressor; Heating and Cooling capable; Free Cooling; Symbio® 800 controller; 150 - 500 Tons; R-514A



CentraVac® Model CVHF
2-Stage Compressor; Heating and Cooling capable; Free Cooling; Heat recovery operation; Symbio® 800 controller; 325 - 2000 Tons; R-514A



CentraVac® Model CVHH
Multi-stage; Dual Compressor; Heating and Cooling capable; Free Cooling; Heat recovery operation; Symbio® 800 controller; 900 - 2000 Tons; R-1233zd



CentraVac® Model CDHF
Multi-Stage Dual Compressor; Heating and Cooling capable; Free Cooling; Symbio® 800 controller; 1450 - 3950 Tons; R-514A



CentraVac® Model CDHH
Multi-stage; Dual Compressor; Heating and Cooling capable; Free Cooling; Symbio® 800 controller; 1800 - 4000 Tons; R-1233zd

Water-Cooled Chillers



Cold Generator™ Model CGWR
Scroll Compressors; 20 - 75 Tons; R-410A



Series R® Model RTWD
Helical Rotary Compressor; Heating and Cooling capable; Heat recovery operation—dual setpoint; Up to 140°F HW production 60 - 250 Tons; R-134a or R-513a



Optimus® Model RTHD
Optional Variable Speed Helical Rotary Compressor; Heating and Cooling capable; 150 - 430 Tons; R-134a; or R-513a for fixed speed only

Air-Cooled Chillers



Ascend® Air-to-Water Heat Pump Model ACX
Energy efficient, all electric heating and cooling; Symbio® 800 controller; 140-230 tons cooling; 1500 - 2500 MBh heating; R-454B



Ascend® Model ACS
Scroll Compressor; 140 - 230 Tons; R-454B; Heating and cooling capable; Heat recovery; Symbio® 800 controller



Ascend® Model ACR
Variable Speed Helical Rotary Compressor; Free Cooling; Symbio® 800 controller; 150 - 550 Tons; R-513A



Model CGAM
Scroll Compressor;
20 - 130 Tons; R-454B;
Heat recovery option



Model TACA
Oil Free Centrifugal;
60 - 440 Tons; R-134a or R-513A



Sintesis® Model RTAF
Variable Speed Helical Rotary
Compressor; 115 - 500 Tons;
R-513A; Symbio® 800 controller



Cold Generator™ Model CCAR
Scroll Compressor with
Air-Cooled Condenser;
20 - 70 Tons; R-410A

Modular Units



Thermafit™ Model AMC
Air-Cooled Chiller; Free cooling
& Heat recovery; 15 - 80 Tons
(800 Ton Banks); R-410A



Thermafit™ Model MWC
Water-Cooled Chiller; Heat
recovery; 15 - 80 Tons (800 Ton
Banks); R-410A



Thermafit™ Model AXM
Air-to-water heat pump; Energy
efficient; All electric cooling or
heating; 30 Ton (300 Ton Banks);
R-410A



Thermafit™ Model WXM
Water-to-water heat pump;
Energy efficient; All electric
cooling or heating; 20 - 80 Tons
(800 Ton Banks); R-410A



Thermafit™ Model MWS
Water-cooled multipipe;
Simultaneous heating and
cooling; 30 - 60 Tons (90-480 Ton
Banks); 450 MBh to 7,200 MBh;
R-410A



Thermafit™ Model TACW
Water-cooled chiller; Oil-free
centrifugal; 60 - 135 Tons (1000
Ton Banks); R-134a and R-513A



Cold Generator™ Model CICD
Water-cooled; Heat Recovery;
20 - 85 Ton (600 ton Arrays)

Thermal Storage



**Thermal Energy
Storage Tanks**
Optimizes energy usage by
storing renewable, excess or
inexpensive energy; Reduces
peak electric demand charges;
Access to demand response
programs; Buildings with chilled
water systems above 100 cooling
tons



**Thermal Battery™
Air-Cooled Chiller Plant**
Pre-Engineered, Factory Built
Cooling System. Incl: Air-Cooled
Chillers, CALMAC® Energy
Storage Tanks, Customizable
System



**Thermal Battery™ Storage-
Source Heat Pump System**
Delivers Heating and Cooling,
Supports Electrification. Incl:
Water-to-Water and Air-to-Water
Heat Pumps, CALMAC® Energy
Storage Tanks, Trane Controls

Packaged Units



Impack®
Cooling, Gas/Electric, Heat Pump
& Dual-Fuel; Multiple Efficiency
Levels; Up to 16 SEER; (1 ph-15
SEER2); 2 - 5 Tons



Foundation®
Cooling, Gas/Electric; Adapts
to Competitors Roof Curbs;
3 - 25 Tons



**Precedent® &
Precedent® with eFlex™**
3 - 25 Tons; Cooling, Gas, Electric,
Heat Pump & Hybrid Dual Fuel;
Standard, High, & eFlex Ultra-
High Efficiency (up to 26.3 IEER);
Symbio 700 control with Mobile
App (6 - 25 Tons) and Air-Fi®
capable



Zoned Rooftop Systems
Pre-designed for small building
comfort; Includes Precedent
or Voyager rooftop unit,
VAV terminal units, Tracer®
Concierge™ system control & Air-
Fi® wireless controls & sensors;
3 - 50 Tons



Voyager® 3
Cooling, Gas/Electric; eStage™
Multi-Stage Compressors; Full &
part load efficiencies; Symbio 700
and Mobile App; Up to 15.8 IEER;
27.5 - 50 Tons



IntelliPak® 1
Cooling, Gas/Electric, Hot
Water; 20 - 130 Tons (Available
with eFlex™ Variable Speed
Compressor; 20 - 75 Tons),
Symbio 800 Controller with 7"
Touchscreen Display, Air-Fi®
Capable



IntelliPak® 2
Cooling, Gas/Electric, Hot
Water, Air-Cooled; 90 - 150 Tons,
Available with eFlex™ Variable
Speed Compressor, Standard
Double Wall Foam, Symbio 800
Controller with 7" Touchscreen
Display, Air-Fi® Capable



IntelliPak® 3
Cooling, Gas/Electric; 20 - 75
Tons, Available with eFlex™
Variable Speed Compressor,
Standard Double Wall Foam,
Symbio 800 Controller with 7"
Touchscreen Display, Air-Fi®
Capable, Up to 17.8 IEER

Self-Contained Units



IntelliPak® Modular Series
Split apart construction, easy
transport & installation; Factory-
installed digital controls; Up to
13.9 EER, 17.9 IEER; Water Cooled
20 - 35 Tons



IntelliPak® Signature Series
Up to 14.1 EER, 19.3 IEER; Floor
by floor system; Factory-installed
digital controls; Water-cooled
20 - 110 Tons



**Modular Self Contained
System**
Smallest Footprint on the Market;
Water-Cooled System; Variable
speed compressors and fans;
Full and part load efficiencies;
Industry-leading Part Load
Efficiency - Up to 20.8 IEER;
40 - 80 Tons, cassette
construction

Water-Source Heat Pumps



**Axiom™ Standard Efficiency
Model GEH/GEV**
Horizontal (0.5 - 15T) or vertical
(0.5 - 25T); Quiet operation;
Multiple airflow configurations;
0.5 - 25 Tons



**Axiom High Efficiency Single-
Stage Model EXH/EXV**
Horizontal or vertical;
Electronically Commuted
Motor (ECM); Rotary or scroll
compressor; 0.75 - 6 Tons



**Axiom High Efficiency
Two-Stage Model DXH/DXV**
Horizontal or vertical; 2-Stage
compressor; Deluxe sound option
for quiet operation; Meets LEED
EAc4 requirement; 2 - 6 Tons



**Axiom Variable Speed
Model VSH/VSV**
Horizontal or vertical; eFlex™
Variable Speed compressors
and fans; Single and three phase
voltage; 2 - 5 Tons



**Axiom High Efficiency
Console Model GEC**
ASHRAE 62 indoor air quality
compliant; Quiet operation;
0.5 - 1.5 Tons



**Axiom Vertical Stack
Model GET**
Multiple capacities & cabinet
sizes; Available in PSC or ECM
motors; Flexible air supply
options; Integrated controls;
0.75 - 3 Tons



**Axiom Water-to-Water
Model EXW**
Co-axial heat exchanger;
Rackable modular design;
5, 10, 20 Tons



Axiom Rooftop Model GSJ
Boiler/Tower or Geothermal applications; Multiple configuration options; Symbio 700 controls; 12.5 - 25 Tons

Air Handling Units



Performance Climate Changer® - Catalog
Cost Effective Performance; Compact Footprint; Factory-Engineered, Mounted & Tested Controls; Indoor/Outdoor; Up to 15000 CFM; 2" R-13 Construction



Performance Climate Changer® - Semi-custom
Leading Efficiency Performance; Dimensional Flexibility enabling Easy Installation; Indoor/Outdoor; Up to 60000 CFM; up to +/-10 in w.g.; 2", R-13 or 3", R-19 Construction; Factory Engineered, Mounted & Tested Controls



Performance Climate Changer - Custom (TCFS/TCPA)
Indoor or outdoor; Unlimited dimensional flexibility and airflow; Up to +/- 12 in. w.g. operating pressure, with <1/2% air leakage rate; Absolute thermal barrier with performance up to R-25



Trane Air Rotation Unit
Indoor or Outdoor; Up to 300 tons and 120,000+ CFM; CW or DX; 2" Foam Insulated panels, factory engineered & mounted controls

Make-Up Air Gas Heating Units



Model GSAA
Indoor Gas-Fired Make-Up Air Handlers; Standard & High Efficiency; 100 - 1200 MBH



Model GRAA
Outdoor Gas-Fired Make-Up Air Handlers; 100 - 1200 MBH



Model AHOA
Packaged Air Handlers; Cooling, Make-Up Air, & Ventilation

Unit Heaters



Gas Fired Unit Heaters
14 sizes, from 30 to 400 MBh; 409 stainless steel; Single point power; Direct Spark ignition; Tubular heat exchangers; OSHA fan guard



Electric Unit Heaters Model UHWA/UHAA/UHRA/UHXA/UHEC/UHCA
7 styles, over 200 configurations; Sized from 1.5 to 50 kW; Capacities from 5 to 16.4 MBh; Vertical or horizontal discharge; Single point power; UL Listed



Hydronic Unit Heaters Model UHS/UHP
38 unit sizes from 8 to 720 MBh; Vertical and horizontal configurations; 2-point or 4-point installation; Single point power: Steam or hot water; OSHA fan guard; ETL/ETLc certified



High Efficiency Gas Fired Unit Heater Model HINA/HIPA
6 sizes: 50-400MBH, natural and LP gas. 3:1 self-modulating turndown; >95% Efficiency

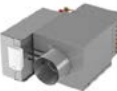
Terminal Units



Blower Coil
Blower Coil Model BCXE; Indoor; Up to 4000 CFM; Horizontal and Vertical Configurations; ECM Motors, Multiple Filter Options, Factory-Engineered & Mounted Controls.



CoolSense® Terminal Unit
Up to 1300 CFM; Variable speed ECM or constant-fan speed; Symbio® 500 controller (available with Air-Fi wireless)



VariTrane® Model VC*F
Single Duct Variable Air Volume Boxes; 25 - 8000 CFM; Optional Factory Installed Piping Package



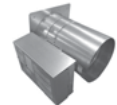
VariTrane® Model VDDF
Dual Duct Variable Air Volume Boxes; 80 - 8000 CFM



VariTrane® Model VF**
Fan-Powered Variable Air Volume Boxes; 200 - 3300 CFM; Parallel or Series Configuration



VariTrane® Model LF**
Low Height Fan-Powered Variable Air Volume Boxes; 100 - 1800 CFM; Parallel or Series Configuration



VariTrane® Model VRRF
Round Inlet/Round Outlet RetroFit Variable Air Volume Boxes; 25 - 4000 CFM



UniTrane® Model FC*B
Horizontal or Vertical Fan Coil; Cabinet, Recessed or Compact Configurations; 200 - 1200 CFM



Force-Flo™ Model FF*B
Horizontal or Vertical Cabinet Heater; Concealed or Recessed Configurations; 200 - 1200 CFM



Model VUVE
Vertical Unit Ventilators; 750 - 1500 CFM



Model HUVC
Horizontal Unit Ventilators; 750 - 2000 CFM

Split Systems



Split Systems
Cooling & Heat Pump; Gas, Electric, or Hot Water Heat; 1.5 - 5 Tons



Odyssey™
Symbio® 700 controller ; Full & part load efficiencies; Up to 14.8 IEER; 6 - 25 Tons



RAU
Air-Cooled Condensing Units; Available with Remote Chiller Evaporators; 20 - 120 Tons



CAU
Air-Cooled Condensers; 20 - 120 Tons

Outdoor Air Solutions



Horizon™ DOAS
DOAS; Packaged product (DX, Air and Water Cooled); Heat Pump, Gas, and Hot Water; <51F Dew Point capability; ERV; AHRI 920 rated



Mixed Air Unit HAXX
Up to 100% outdoor air; Packaged product (DX - Gas Heating); >51F Dew Point capability; ERV; AHRI 340/360 certified; ASHRAE 90.1 compliant; 10 - 15 Tons

VFD



Trane TR150/TR200 Variable Frequency Drives; 6, 12, 18 Pulse



Trane – by Trane Technologies (NYSE: TT), a global climate innovator – creates comfortable, energy efficient indoor environments through a broad portfolio of heating, ventilating and air conditioning systems and controls, services, parts and supply. For more information, please visit trane.com or tranetechnologies.com.

All trademarks referenced in this document are the trademarks of their respective owners.

© Trane. All Rights Reserved.

EDU-SLB048-EN
09/06/2023