

## S-SERIES (TUMY)

[WWW.TRANE.COM/DUCTLESS](http://WWW.TRANE.COM/DUCTLESS)

SKU: ME-50-TUMY-CAT | 09/2019  
©2019 Mitsubishi Electric Trane HVAC US LLC  
All Rights Reserved

CITYMULTI®

LIGHT COMMERCIAL  
APPLICATIONS



# *mitsubishi electric trane hvac us is a leader in advanced hvac systems.*

When it comes to providing personalized comfort in every room of every building, we are here to help. No other company is as committed to creating environmentally friendly and affordable technology that's ideal for today's home and work environments, no matter the size or shape.

## **QUALITY**

Trane®/Mitsubishi Electric is consistently recognized by HVAC contractors as a preferred brand of ductless and variable refrigerant flow (VRF) systems, with the highest quality rating among manufacturers. With over 30 years of industry leadership, we are proud to be a leading brand of VRF technology.

## **PERFORMANCE**

We deliver a complete range of compact and powerful heat pump and heat recovery products that are also intelligent, quiet, and use energy efficiently.

## **TRAINING**

We provide comprehensive product and applications instruction through our regional training centers across the United States and Mexico.

## **SUPPORT**

Trane VRF zoning-system professionals provide project consultation in the areas of application planning and design, plus installation and start-up. Our post installation support includes user training and operation monitoring.

## **GROWTH**

Our products and services provide opportunities for architects, engineers, distributors and contractors to enhance and grow their businesses. With nearly 30 years of consistent growth, we continue to lead the ductless and VRF market's acceleration.

## **ECO CHANGES**

Eco changes is our commitment to continuously strive for a greener tomorrow through cutting-edge global environmental technologies and outstanding strength in manufacturing.



## TABLE OF CONTENTS

Overview of CITY MULTI® .....	5
<b>OUTDOOR UNITS</b>	
Outdoor Units Showcase .....	10
S-Series (TUMY) .....	12
S-Series H2i® (TUMY H2i) .....	13
S-Series Accessories .....	15
<b>INDOOR UNITS</b>	
Indoor Units Overview .....	18
TPKFYP (Wall-mounted) .....	19
TPLFYP (Four-way Ceiling Cassette) .....	20
i-see Sensor .....	22
TPMFYP (One-way Ceiling Cassette) .....	23
TPCFYP (Ceiling-suspended) .....	24
TPEFYP (Ceiling-concealed Ducted) .....	25
FB (M,L,H) Filter Boxes .....	27
TPFFYP (Floor-standing) .....	28
TPVFYP (Multi-position Air Handler) .....	29
<b>CONTROLS AND SOFTWARE SOLUTIONS</b>	
Centralized Controller TC-24B .....	32
Input/Output Controllers .....	33
Zone Controllers .....	35
kumo cloud® .....	38
<b>SPECIFICATIONS</b> .....	41



*PRODUCT OVERVIEW*

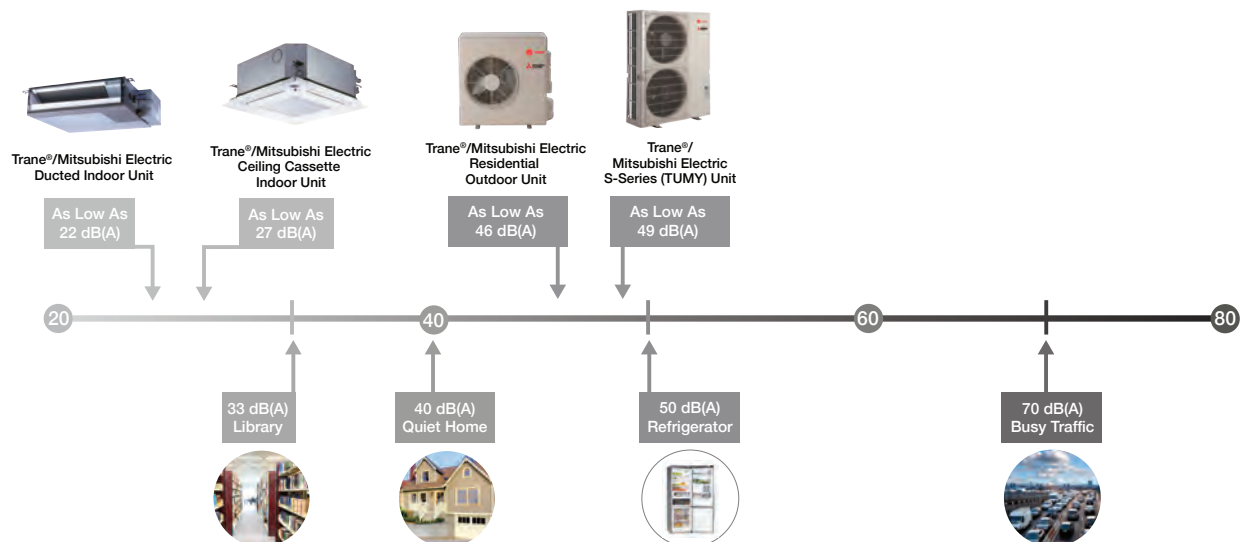
## WHY CITY MULTI® VRF SYSTEMS?

As a global leader in VRF zoning solutions, you can trust that you're receiving the most advanced technology and dedicated support in the industry.

### CITY MULTI ADVANTAGES:

- ▶ **Ultra-efficient design** to ensure total comfort in any commercial space
- ▶ **Advanced Inverter** technology varies the speed of the compressor for more efficient cooling and heating
- ▶ **Complete zoning control** so you heat and cool the areas that need it without paying for the ones that don't
- ▶ **Design flexibility** for any application, from modern designs to historic renovations
- ▶ **Complete product family** to handle every job from the smallest spaces to the largest buildings and campuses
- ▶ **Sustainable technology** that contributes to Leadership in Energy & Environmental Design (LEED) credits and saves energy
- ▶ **Quiet operation** that's even softer than a human whisper

### QUIET OPERATION



## PRODUCT OVERVIEW

### OUTDOOR UNIT

We offer an air-source heat pump lineup that can be tailored to any application's requirements.



S-Series/S-Series H2i®

**INDOOR UNITS**

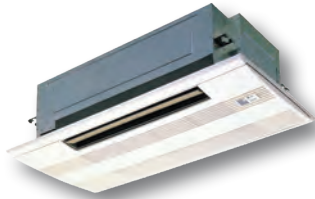
Our wide range of indoor units enables you to choose the style and size that meets your requirements for layout and design.



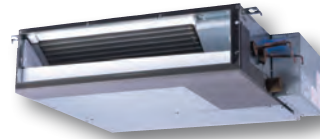
TPKFYP  
Wall-mounted



TPLFYP-EM (33"x33")  
TPLFYP-FM (22"x22")  
Ceiling Cassette (4-way)



TPMFYP  
Ceiling Cassette (1-way)



TPEFYP-MS Low Profile  
TPEFYP-MA Medium Static  
TPEFYP-MH High Static  
Ceiling-concealed Ducted



TPCFYP  
Ceiling-suspended



TPFFYP-CS Exposed  
TPFFYP-RE Concealed  
Floor-standing



TPVFYP  
Multi-position Air Handler

## PRODUCT OVERVIEW

### CITY MULTI® CONTROLS NETWORK (CMCN)

The flexibility of CITY MULTI controls allows you to select the level of control that fits the application's needs.

#### CENTRALIZED CONTROLLERS



TT-24B-J  
Touch Screen  
Centralized Controller

#### ZONE CONTROLLERS



TAR-FL32MA-E  
Wireless MA  
Handheld Remote Controller



TAC-YT53CRAU-J  
Simple MA  
Remote Controller



PAR-33MAA-J  
Wired MA  
Remote Controller



TAR-U01MEDU-K  
SmartME Controller®  
Remote Controller



TAR-CT01MAU-SB  
Touch MA  
Remote Controller



kumo cloud®  
App-based Controller





*OUTDOOR UNITS*  
*S-Series (TUMY and TUMY H2i®)*





*S-SERIES (TUMY)*

## OUTDOOR UNITS

### S-SERIES (TUMY)

*Solutions for light commercial and large residential applications*

S-Series (TUMY) systems are single-phase outdoor units with Variable Refrigerant Flow (VRF) technology, offering an ideal fit for light commercial applications. Featuring best-in-class efficiency ratings and ENERGY STAR® certified units, TUMY systems are designed to deliver operational cost-savings and long-term performance to building owners. The systems use an integrated controls network, and cool or heat up to 12 individual zones with a variety of indoor unit styles.



#### KEY FEATURES

- ▶ Single-phase 208/230V operation for use in light commercial and residential applications
- ▶ Systems available from 36,000–60,000 BTUH
- ▶ All models are ENERGY STAR® certified
- ▶ Blue-fin condenser coating standard on all models
- ▶ Extended heating operating range down to -13° F
- ▶ Extended cooling operating range down to 5° F
- ▶ Connect up to 12 indoor units

\*Low ambient operation requires the use of low ambient accessories such as a WB-PA3 Wind Baffle.

Maximum Refrigerant Piping Lengths (Feet)	
Total Length	984 <sup>1</sup>
Indoor to Outdoor	492 <sup>2</sup>
Indoor to First Branch	98
Vertical Differentials Between Units (Maximum Feet)	
Indoor/Outdoor (Outdoor Higher)	164
Indoor/Outdoor (Outdoor Lower)	131
Indoor/Indoor	49

1. Applies to P036 and P048 models only.

2. Applies to P036 and P048 models only.

## S-SERIES H2i® (TUMY H2i)

*Solutions for light commercial and large residential applications*

The S-Series (TUMY) outdoor unit lineup has expanded to include Hyper-Heating INVERTER® (H2i) technology. Part of the CITY MULTI® family, the TUMY is a single-phase heat pump ideal for light commercial and large residential applications including banks, churches, schools, retail centers and more.



### KEY FEATURES

- ▶ 100% heating capacity at 5° F
- ▶ 78% heating capacity down to -13° F utilizing flash injection technology
- ▶ ENERGY STAR® certified units
- ▶ Base pan heater standard
- ▶ Available in 36,000 and 48,000 BTUH capacities

\*Low ambient operation requires the use of low ambient accessories such as a WB-PA3 Wind Baffle.

Maximum Refrigerant Piping Lengths (Feet)	
Total Length	984
Indoor to Outdoor	492
Indoor to First Branch	98
Vertical Differentials Between Units (Maximum Feet)	
Indoor/Outdoor (Outdoor Higher)	164
Indoor/Outdoor (Outdoor Lower)	131
Indoor/Indoor	49

*ACCESSORIES*



## Accessories

### S-SERIES ACCESSORIES

S-Series accessories feature the latest in high quality, durable products designed to complement outdoor units and to maintain peak performance and with limited maintenance.

#### Air Outlet Guide

The air outlet guide is used to force air out of the outdoor unit, either upward, downward or sideways (to the left or to the right). It can be used to prevent the outdoor unit from short cycling the exhaust air. It also enables the outdoor unit to be mounted closer to a wall or other outdoor units.



#### Front Wind Baffle

The specifically designed S-Series front wind baffles block unwanted wind that could impede operation by preventing the fan from counter-rotating in windy conditions. The addition of a front wind baffle to the cabinet of the outdoor unit also extends the cooling capacity. This component is constructed to be durable and low maintenance.



#### Base Pan Heater

S-Series base pan heaters feature a heating coil controlled by the outdoor unit which prevents ice buildup. The base pan heater is ideal for low temperature, high humidity environments where the outdoor unit will be operating in heating mode for an extended period of time.



#### Vertical Air Deflector

The S-Series air deflector changes the direction of the discharged air. This permits multiple outdoor units to be positioned closer together in applications with limited space.





some are *sicker* than others  
THE EMPTY VESSEL ANGELLA GRAFF





## INDOOR UNITS



# INDOOR UNITS

## Complete Building Comfort Solutions

All models feature quiet operation, easy maintenance, and the ultimate in personalized comfort control. The chart below gives the capacity size for each model.

Capacity Code	Nominal BTUH												
	5,000	6,000	8,000	12,000	15,000	18,000	24,000	27,000	30,000	36,000	48,000	54,000	
Wall-mounted TPKFYP-(BM, HM, KM)			•	•	•	•	•	•		•			
Ceiling Cassette (4-way) TPLFYP-EM			•	•	•	•	•	•		•	•	•	
Ceiling Cassette (4-way) TPLFYP-FM		•		•	•	•	•						
Ceiling Cassette (1-way) TPMFYP-BM			•	•	•	•							
Ceiling-suspended TPCFYP-KM						•		•		•	•		
Ceiling-concealed (Ducted Low-Profile) TPEFYP-MS			•	•	•	•	•	•					
Ceiling-concealed (Ducted Medium-Static) TPEFYP-MA			•	•	•	•	•	•	•	•	•	•	•
Ceiling-concealed (Ducted High-Static) TPEFYP-MH						•	•	•	•	•	•	•	•
Floor-standing (Exposed/ Concealed) TPFFYP-(CS, RE)			•	•	•	•	•	•					
Multi-position TPVFYP-AM					•		•	•		•	•	•	•

## TPKFYP (Wall-mounted)

### *Elegant design and compact dimensions*

Whatever the size or shape of your room, there's a TPKFYP wall-mounted unit that is just right for you. TPKFYP units mount high on the wall and blend beautifully into any space. Perfect for hotels, assisted living facilities, offices, residences and other applications where wall space is available.



#### KEY FEATURES

- ▶ Ranges from 6,000 to 30,000 BTUH
- ▶ Compact, lightweight and features a built-in wireless sensor for use with an optional wireless remote controller
- ▶ Extremely quiet: as low as 32 dB(A)
- ▶ Multiple fan speed settings
- ▶ Multiple vane settings and swing setting adjust airflow in vertical directions
- ▶ Front panel opens easily—no tools are needed to gain access to the filter
- ▶ Refrigerant and drain piping can be connected from the rear, right, base, or left of the unit
- ▶ Condensate pump systems are available when gravity drainage is not available

### Benefits

#### **EASY FILTER CLEANING**

The front grille hinges open easily—no tools are needed to gain quick access to the filter. The filter can be removed and cleaned as needed.

#### **QUIET OPERATION**

The unit incorporates a random pitch fan to assure quiet operation. The optimal design of the airflow passage features a small fan diameter to allow for a compact installation. Thanks to practical casing configuration, airflow generated by the fan is uniformly distributed.

#### **SUPERIOR AIR DISTRIBUTION**

A user-selectable vane swing setting with the SmartME and Simple MA remote controllers enhances air distribution in the conditioned space.

#### **FLEXIBLE INSTALLATION**

Refrigerant and drain piping can be connected from the rear, right, base, or left of the unit, providing much greater flexibility for piping and selecting an installation site.

### TPLFYP (Four-way Ceiling Cassette)

*Adjustable airflow to meet your every need*

The TPLFYP-Series four-way ceiling cassette provides exceptional performance and air coverage. Two styles are available: the TPLFYP-FM140A and the TPLFYP-EM140A. Both models can be accessorized with installation trim panels (TPLFYP-ITP1 and TPLFYP-ITP2) to ensure a seamless integration into suspended ceilings.

#### TPLFYP-EM140A



##### KEY FEATURES

- ▶ 33" x 33" cabinet size
- ▶ Capacity range from 6,000 to 48,000 BTUH
- ▶ Sound levels as low as 19 dB(A)
- ▶ Ventilation air connection(s) (second connection found in multi-function casement)
- ▶ High-efficiency filter option (MERV-10 requires multifunction casement)
- ▶ Branch ducting capability
- ▶ Four speed fan settings
- ▶ Integrated condensate lift mechanism to provide up to 33-7/16" of lift

#### TPLFYP-FM140A



##### KEY FEATURES

- ▶ 22" x 22" cabinet size to fit into standard T-grid ceiling
- ▶ Capacity range of 5,000 to 18,000 BTUH
- ▶ Sound levels as low as 26 dB(A)
- ▶ Ventilation air connection
- ▶ Four speed fan settings
- ▶ Integrated condensate lift mechanism to provide up to 19-11/16" of lift

## Benefits

**HIGH PERFORMANCE AND VERSATILITY**

The four-way ceiling cassette is compact and recesses easily into a ceiling space, so all you see is an attractive flush-mounted grille. The TPLFYP-EM140A has a unit height of only 10-3/16" or 11-3/4", depending on the model. At 8-3/16" in height and 22-7/16" x 22-7/16" width, the TPLFYP-FM140A makes even the tightest of ceiling installations a possibility.

**QUIET OPERATION**

This powerful indoor unit is whisper-quiet, down to 26 dB(A) for the TPLFYP-FM140A and 29 dB(A) for the TPLFYP-EM140A.

**CUSTOMIZE THE AIRFLOW PATTERN TO MEET YOUR NEEDS**

The different airflow options provide the best solution for a variety of room layouts and air-conditioning requirements. For extra versatility, you can select up to 72 airflow patterns with two-, three-, or four-way airflow.

**BUILT-IN CONDENSATE LIFT MECHANISM**

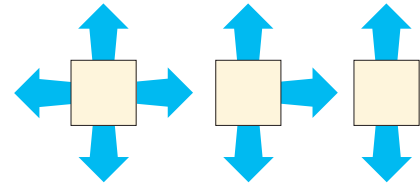
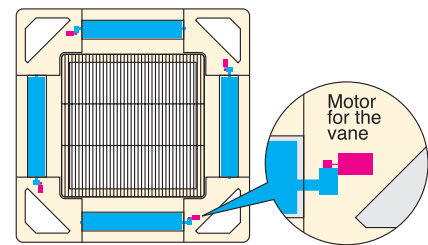
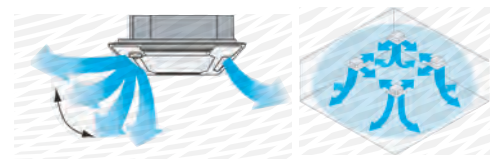
The drain piping of the TPLFYP-EM140A can be positioned anywhere up to 33-7/16" from the ceiling's surface, allowing for long piping and versatility. The TPLFYP-FM140A model has a built-in pump that lifts condensate 33" from the ceiling's surface. The unit recognizes if there is a pump failure and safeguards against leaks.

**CORNERPOCKET DESIGN SIMPLIFIES MAINTENANCE AND INSTALLATION**

TPLFYP-EM140A allows access through the pockets equipped on each of four corners of the grille to complete installation, maintenance work, and height adjustment.

**EASY MAINTENANCE, LONG-LIFE FILTER**

The washable filter provides about 2,500 hours of use in a normal office environment before cleaning is needed.

**4-, 3-, OR 2-WAY AIRFLOW****FIXED AIRFLOW DIRECTION PER VANE****INDEPENDENT VANE MOTOR CONTROL**

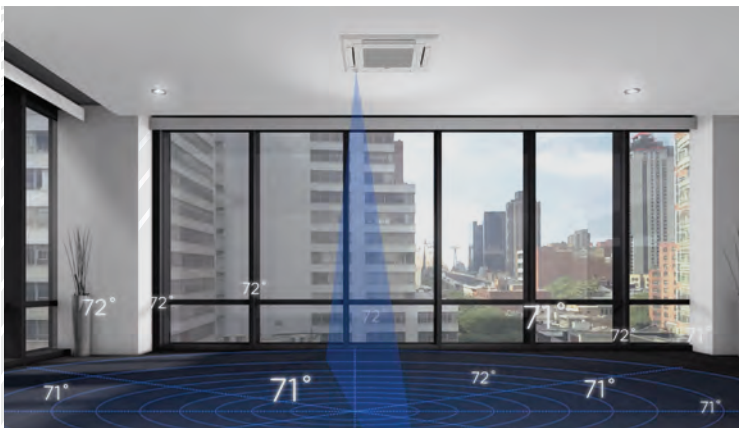
## INDOOR UNITS

### **i-see Sensor™**



The 3D i-see Sensor detects the number of occupants in a room and adjusts the temperature accordingly, making automatic energy-saving operation possible in places where the number of occupants frequently changes. Additionally, when the area is continuously unoccupied, the system switches to an enhanced power-saving mode.

- ▶ Detects occupants location
- ▶ Detects size, temperature, and movement of occupants (heat source). Once an occupant is detected, the angle of the indoor unit's vane(s) is automatically adjusted. Each vane can be independently set to "Direct Airflow" or "Indirect Airflow" according to user preference
- ▶ Highly accurate temperature detection
- ▶ The sensor can detect 1,856 points of surface temperature, rotating a full 360° in 3-minute intervals
  - This is a significant improvement over the previous version of the i-see Sensor, which had a single element and did not detect room occupants
- ▶ Room occupancy energy-saving mode
  - When the occupancy rate is approximately 30%, energy consumption is reduced by offsetting the temperature by  $\pm 2^{\circ}$  F
- ▶ No occupancy energy-saving mode
  - When the 3D i-see Sensor detects that no one is in the room, and 60 minutes have elapsed, the room temperature is offset by  $\pm 4^{\circ}$  F
- ▶ No occupancy Auto-OFF mode
  - When the room remains unoccupied for a user specified period of time, the indoor unit turns off automatically, providing even greater energy savings. The time period can be set, in 10-minute intervals, from 60 to 180 minutes



## TPMFYP (One-way Ceiling Cassette)

*Compact and lightweight, perfect for office spaces with windows*

The TPMFYF model is a ductless, one-way, ceiling cassette that moves air in one direction, and has the capability of introducing ventilation air. The TPMFYF can be accessorized with an installation trim panel (TPMFYP-ITP1) to ensure a seamless integration into suspended ceilings.



### KEY FEATURES

- ▶ The TPMFYF is available in 6,000, 8,000, 12,000 and 15,000 BTUH
- ▶ Standardized cabinet size for all models: 31-31/32"
- ▶ Airflow control technology operates as low as 27 dB(A) for industry-leading quiet performance
- ▶ Integrated condensate lift mechanism to provide up to 23-5/8" of lift
- ▶ Full unit access through front cover panel

## Benefits

### QUIET OPERATION

Specialized airflow control technology operates as low as 27 dB(A) for industry-leading sound performance.

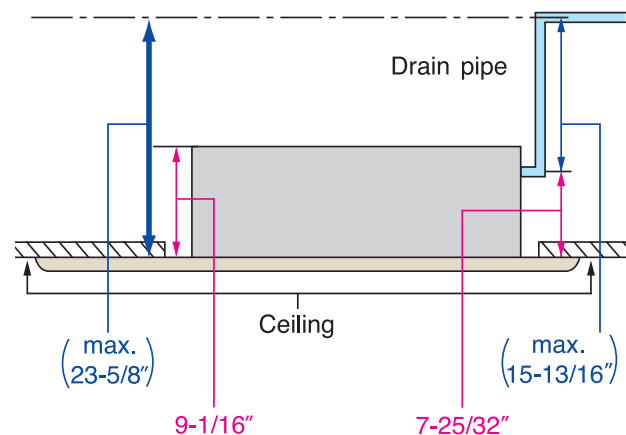
### BUILT-IN CONDENSATE LIFT MECHANISM

The drain pipe can be extended anywhere up to 23-5/8" above the ceiling's surface.

### EASY INSTALLATION AND MAINTENANCE

TPMFYP body size has been standardized for all models at 31-31/32" for easier installation. With a height of only 9-1/16", the profile is one of the smallest of all CITY MULTI® ceiling models. This unit is one of the lightest available with a weight of only 31 pounds for the main unit and seven pounds for the panel.

### DRAIN MECHANISM



## INDOOR UNITS

### TPCFYP (Ceiling-suspended)

Compact design ideal for classrooms, restaurants and stores

The TPCFYP model features powerful air throw to cover entire spaces quietly and efficiently.



#### KEY FEATURES

- ▶ Available in 15,000, 24,000, 30,000, and 36,000 BTUH capacities
- ▶ Auto-vane and wide-range outlet provides uniformly distributed conditioned air to all corners of the room
- ▶ Four speed fan settings
- ▶ Accessory filters are available to increase filtration effectiveness
- ▶ Optional pump kit is available for condensate removal

## Benefits

### POWERFUL PERFORMANCE

The easy-to-install, ceiling-suspended unit delivers enough cold or hot air to make any space more comfortable. Manually adjusted, oversized swing louvers direct the airflow left or right, covering the entire space quietly and efficiently.

### THE i-see Sensor™ ACCESSORY

This amazing technology constantly monitors and adjusts temperatures for maximum comfort and efficiency.

- ▶ Measures infrared rays generated from surrounding walls and surface angles
- ▶ Rotates 90 degrees in five-second intervals
- ▶ Efficiently adjusts temperatures to ideal comfort levels for occupants

### QUIET, EFFICIENT AIRFLOW

Appropriate airflow can be selected to enhance space conditioning efficiency and comfort while operating at a low sound level. TPCFYP's auto-vane and wide-range outlet swings the conditioned air and distributes it uniformly to all corners of the room.

### EASY INSTALL

The TPCFYP's direct suspension allows installation on most ceiling surfaces quickly and securely using only suspension bolts and the durable attachment fixture. An optional pump kit is available to dispose of condensate.



## TPEFYP (Ceiling-concealed Ducted)

*Flexible design allows elegant interior layout*

The TPEFYP models are high-performance, ceiling-concealed, ducted indoor units. An excellent choice for office buildings, schools, hotels, assisted-living facilities and other applications where ceiling space is available.

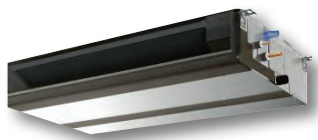
### KEY FEATURES

- ▶ External static pressure settings are adjustable to meet varying application conditions
- ▶ Choice of fan speed settings
- ▶ Side access to control panel
- ▶ Integrated condensate lift mechanism (low-static, mid-static and TPEFYP-MH models)



#### LOW PROFILE (TPEFYP-MS)

- ▶ Extremely quiet, with sound ratings as low as 26 dB(A)
- ▶ Capacities range from 6,000 to 24,000 BTUH
- ▶ Integrated condensate lift mechanism to provide up to 21-11/16" of lift



#### MEDIUM STATIC (TPEFYP-MA)

- ▶ Provides up to 0.60" external static pressure
- ▶ Extremely quiet, with sound ratings as low as 26 dB(A)
- ▶ Capacities range from 6,000 to 54,000 BTUH
- ▶ Integrated condensate lift mechanism to provide up to 27-9/16" of lift



#### HIGH STATIC (TPEFYP-MH)

- ▶ Provides up to 1.00" external static pressure
- ▶ Extremely quiet, with sound ratings as low as 36 dB(A)
- ▶ Capacities range from 15,000 to 54,000 BTUH
- ▶ Integrated condensate lift mechanism to provide up to 27-9/16" of lift

## INDOOR UNITS

### Benefits

#### CHOICE OF EXTERNAL STATIC PRESSURE

Additional external static pressure capacity provides flexibility for duct extension, branching, and air outlet configuration. The factory setting can be field-adjusted to match the installed ductwork for TPEFYP indoor units.

The TPEFYP-MS indoor unit is available in a low-profile option with up to 0.20" W.G., a medium static option with up to 0.60" W.G., and a high-static option for up to 1.00" W.G.

#### QUIET OPERATION

The specially designed centrifugal fan provides exceptionally quiet operation, even at high operating speeds.

##### OPERATING SOUND RANGE

		TPEFYP-MA															
		P06	P08	P12	P15	P18	P24	P27	P30	P36	P48	P54					
Sound Level dB(A)	Fan Speed Low-High	26-29		28-34		28-35		29-36		30-38		32-41		35-44		36-45	

		TPEFYP-MS											
		P06	P08	P12	P15	P18	P24						
Sound Level dB(A)	Fan Speed Low-High	22-28		23-30		23-35		28-33		30-37		30-40	

		TPEFYP-MH									
		P15	P18	P24	P27	P30	P36	P48	P54		
Sound Level dB(A)	Fan Speed Low-High	34-39		36-41		35-41		38-43		38-44	

#### BUILT-IN CONDENSATE LIFT MECHANISM

The drain piping can be positioned anywhere up to 21-11/16" for TPEFYP-MS or 27-9/16" for TPEFYP-MA and TPEFYP-MH from the ceiling's surface, allowing for long piping and versatility. A built-in safety switch halts operation if the pump experiences a problem or the drain becomes clogged, ensuring no water leaks occur.

#### COMPACT OPTIONS (TPEFYP-MS)

The TPEFYP-MS model is very compact, with a height of 7-7/8". Standard features include brazed refrigerant connections, rear air return, and auto fan mode. The unit operates as low as 22 dB(A), and the control panel is located on the opposite side from other ducted models. This unit is an ideal choice for guest rooms in hotels, dormitories, assisted living centers or any application with tight vertical clearances and minimal duct work.

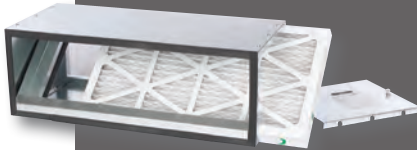
## FB (M, L, H) FILTER BOXES

Designed for CITY MULTI® Ceiling-concealed Ducted Indoor Units

**Low-Profile FBL1** boxes include 1"-thick pleated MERV 8 filter(s).

**Medium-Static FBM2** boxes include 2"-thick pleated MERV 13 filter(s).

**High-Static FBH** boxes include 4"-thick pleated MERV 13 filter(s).



### KEY FEATURES

- ▶ Class 2 rated under UL Standard 900
- ▶ Cabinet is constructed of non-insulated 20 gauge G-60 galvanized steel
- ▶ Foam gasket provides airtight connection to indoor unit and access door
- ▶ Return connection in rear easily field converted to bottom

Part Number	Used on CITY MULTI Models	Filters Included	Net Weight (lbs.)
FBL1-1	TPEFYP-006, 008, 012-MS	(1) – 13" x 25" x 1"	12
FBL1-2	TPEFYP-015, 018-MS	(1) – 12" x 20" x 1" (1) – 12" x 14" x 1"	15
FBL1-3	TPEFYP-024-MS	(3) – 12" x 20" x 1"	18

Part Number	Used on CITY MULTI Models	Filters Included	Net Weight (lbs.)
FBM2-1	TPEFYP-006, 008, 012-MA	(1) – 14" x 25" x 2"	20
FBM2-2	TPEFYP-015, 018-MA	(1) – 14" x 20" x 2" (1) – 14" x 14" x 2"	26
FBM2-3	TPEFYP-024, 027, 030-MA	(2) – 14" x 20" x 2"	32
FBM2-4	TPEFYP-036, 048-MA	(2) – 14" x 20" x 2" (1) – 14" x 14" x 2"	41
FBM2-5	TPEFYP-054-MA	(3) – 14" x 20" x 2"	46

Part Number	Used on CITY MULTI Models	Filters Included	Net Weight (lbs.)
FBH2-1	TPEFYP-015, 018, 024-MH	(1) – 20" x 24" x 2"	14
FBH2-2	TPEFYP-027, 030-MH	(1) – 20" x 16" x 2", (1) – 20" x 20" x 2"	24
FBH2-3	TPEFYP-036, 048, 054-MH	(2) – 20" x 20" x 2"	27

## INDOOR UNITS

### TPFFYP (Floor-standing)

*Effectively use perimeter areas for space conditioning*

TPFFYP floor-standing models are available as exposed or concealed indoor units. At less than nine inches deep, these units are easy to install in peripheral spaces, yet offer highly-efficient cooling and heating performance. Their low operating sound and compact size make them ideal for hotel rooms, schools and office buildings.



TPFFYP-RE  
Concealed Type

#### KEY FEATURES

- ▶ TPFFYP-RE—designed for applications requiring a built-in, concealed, floor-standing unit
- ▶ The TPFFYP-RE unit can be field converted from top discharge to front discharge



TPFFYP-CS  
Exposed Type

- ▶ TPFFYP-CS—exposed-type model, perfect for most applications and requires no finish work
- ▶ Available in 6,000, 8,000, 12,000, 15,000, 18,000 and 24,000 BTUH
- ▶ Two speed fan settings

### Benefits

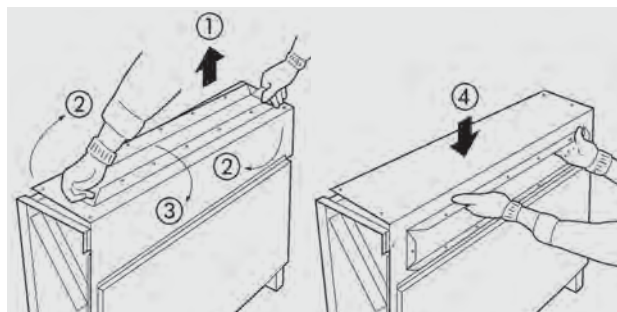
#### OPTIONAL MOUNTING FOR REMOTE CONTROLLER

TPFFYP units can house a remote controller in the top corner (under a cover panel). The remote controller can be mounted on the wall or in the TPFFYP unit.

#### INSTALLATION FLEXIBILITY

The TPEFY-RE unit can be field converted from top discharge to front discharge to increase installation flexibility.


#### INSTALLATION FLEXIBILITY



## TPVFYP (MULTI-POSITION AIR HANDLER)

*Ideal for closet, attic, or equipment room installations*

TPVFYP multi-position air handlers can be connected to a system with other CITY MULTI® indoor units for complete system design flexibility. The multi-position design is suitable for any application, making it ideal for installation in a closet, attic, or an equipment room.

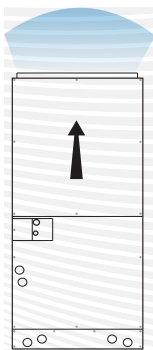


**Capacity Range:**  
12,000–54,000 BTUH

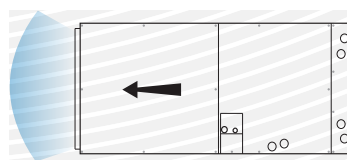
### KEY FEATURES

- ▶ Selectable external static pressure up to 0.80
- ▶ Reusable standard-size 1" filter
- ▶ Side return available (P012-P024 only)
- ▶ Unique cabinet insulation design allows for no thermal penetration into the coil section
- ▶ Cabinet can be disassembled to install in very tight spaces
- ▶ Heavy gauge, high-gloss powder coat finish steel cabinets with 1" fiberglass-free foam insulation (R-4.2 insulation value)
- ▶ Accessories available for various custom applications, including two-stage auxiliary heat, fan speed indication, humidifier control, and more
- ▶ Cabinet sections are embossed with fan, coil, and other components for easy identification and maintenance

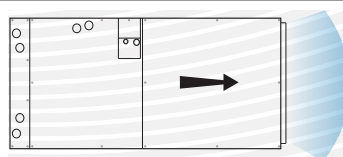
### VERTICAL AIRFLOW



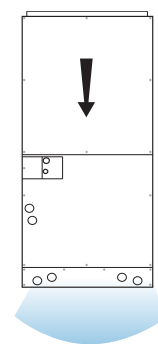
### HORIZONTAL LEFT AIRFLOW



### HORIZONTAL RIGHT AIRFLOW

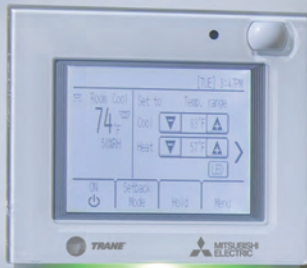


### DOWNFLOW



For downflow configurations, the CMA-1 is recommended for proper management of condensate to prevent water blowoff in certain conditions.

# CONTROLS SOLUTIONS

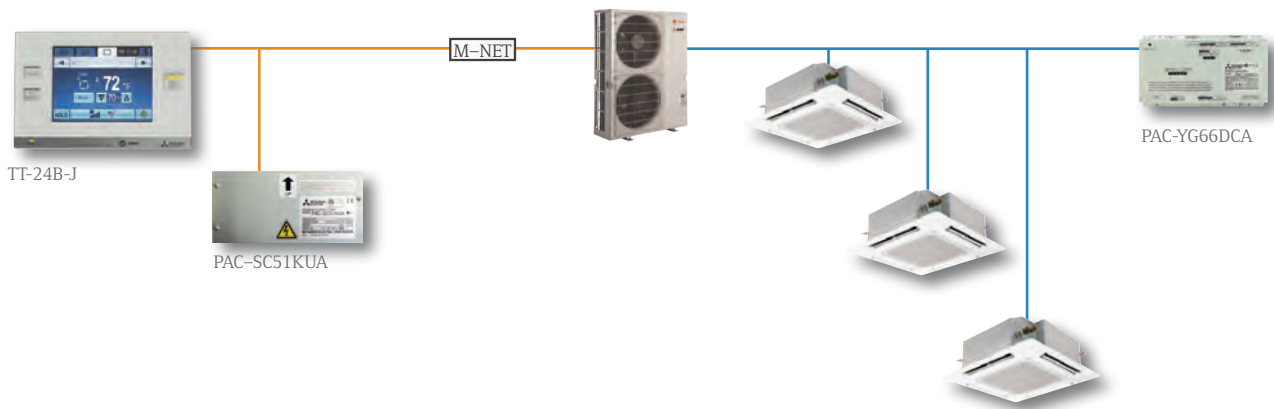




CENTRALIZED CONTROLLER TT-24B-J



Customized individual zone control via a bright and easy-to-use touchscreen interface. The TT-24B-J is perfect for light commercial and residential applications.



STANDARD FEATURES

Function	Description
Max No. of Indoor Units	Up to 24 indoor units can be connected
ON/OFF	On/Off operation for a single group and batch operation
Operation Mode	Setback /Cool/Dry/Auto (R2- and WR2-Series)/Fan/Heat
Temperature Setting	Supports single and dual set point modes/Set temperature from 57° F – 87° F depending on operation mode and indoor unit
Fan Speed Setting	Hi/Mid-2/Mid-1 /Low/Auto (Available fan speed settings depending on indoor unit)
Airflow Direction Setting	Airflow angles: 100° – 80° – 60° – 40° and swing/Airflow direction settings vary depending on indoor unit model
Permit/Prohibit Function	Individual prohibit operations for each remote controller function (ON/OFF, Set Temperature, Operation Mode and Filter Reset)
Indoor Return Air Temperature	Displays the measured return air temperature from each group
Error Indication	Displays a four-digit code and the affected unit address
Ventilation Interlock	Allows the group to be interlocked with Lossnay unit
Schedule Operation	Weekly schedule can be set by groups based on operation pattern
External Input/Output	Inputs: Level Signal–Batch Start/Stop, Batch Emergency Stop Outputs: Start/Stop Status, Error/Normal Status
Power Supply	PAC-SC51KUA
Dimensions – (H x W x D)	7-3/32" x 4-23/32" x 1-3/16"



## INPUT/OUTPUT CONTROLLERS

### PAC-YG66DCA DIGITAL INPUT DIGITAL OUTPUT (DIDO) CONTROLLER

The DIDO controller makes it possible to control general-purpose equipment with an TE-200A, TE-50A, TW-50A, or TT-24B-J centralized controller. Connect up to six (6) pieces of equipment to the DIDO controller. The equipment can either be scheduled or interlocked with indoor units through the use of a centralized controller.

*Note: 24 VDC power is required on-site.*

### STANDARD FEATURES

Function	Description
Inputs	Qty two Digital Status Inputs and 2 Digital Error Inputs (Non-Voltage Contacts)
Outputs	Qty two Digital Outputs (Non-Voltage Relay Contact   Use only VDC with outputs)
Monitor	Status, Fault   Requires TE-200A, TE-50A, TW-50A, or TT-24B-J Centralized Controller
Control	On/Off, Start/Stop, Enable/Disable   Requires TE-200A, TE-50A, TW-50A, or TT-24B-J Centralized Controller
Schedule Operation	Weekly schedule can be set by groups based on operation pattern Requires TE-200A, TE-50A, TW-50A, or TT-24B-J Centralized Controller
Interlock Function	Interlock M-NET devices and output contacts according to status of input contacts
Power Supply	24 VDC (5W plus loads)
Communication	M-NET
Dimensions — (H x W x D)	4-3/4" x 7-7/8" x 1-13/16"





## ZONE CONTROLLERS

Remote Controller for CITY MULTI systems featuring an intuitive touch screen interface with dual set point functionality and LED status indicator



TAR-U01MEDU-K

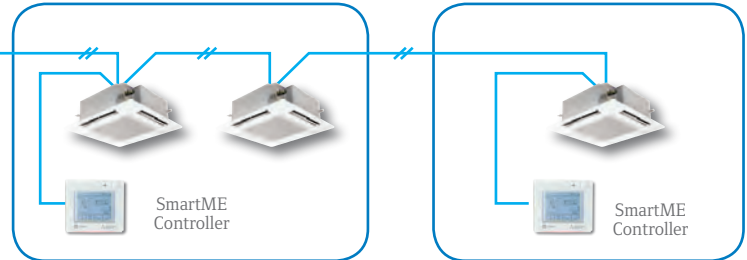
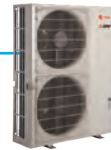
### SmartME CONTROLLER®

#### KEY FEATURES

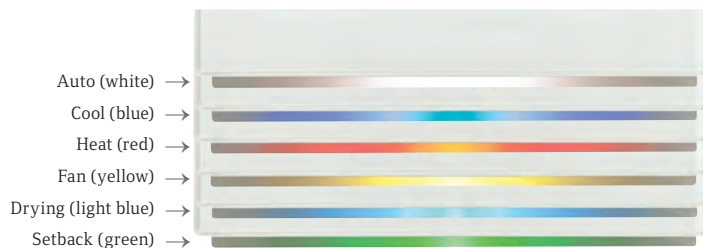
- ▶ Intuitive backlit touch screen
- ▶ Group control up to 16 indoor units in a single zone
- ▶ Onboard temperature, humidity, occupancy, and brightness sensors
- ▶ Monitors third-party equipment through AdvancedHVAC controller
- ▶ Supports dual set point and setback functions
- ▶ Improved scheduling
- ▶ Color glow status indicator LED bar
- ▶ Dimensions (H x W x D): 4-3/4" x 5-17/32" x 1"



TT-24B-J



#### COLOR GLOW STATUS INDICATOR



The LED bar indicates the operation status by lighting and blinking with different colors and brightness (High/Low), or by turning off. Multiple operation status indicators include blue (Cooling), light blue (Drying), yellow (Fan), white (Auto), green (Setback), red (Heating) and lime (Energy Save). Advanced settings are available for selecting desired color per mode, LED brightness (in conjunction with room brightness sensor), and temperature range indicator.

#### ENERGY SAVE FUNCTION

The Energy Save function reduces energy consumption during vacancy. The user can select a mode for the Energy Save function which is activated based on vacancy detection in a room, including the following:

- ▶ Thermo-off: Puts the unit into the Thermo-off state
- ▶ Set temperature offset: Offsets the set temperature
- ▶ Fan speed down: Sets the fan speed to Low
- ▶ ON/OFF: Turns off the unit
- ▶ Operation mode: Sets the operation mode to Setback

#### OCCUPANCY SENSOR

The built-in Occupancy Sensor is used to detect movement in a room. If the sensor detects no movement (or "vacancy") it will activate the selected Energy saving function mode. The Occupancy Sensor returns the system to original operating status after detecting movement. The user can adjust the away time and detection sensitivity threshold level for the Occupancy Sensor. Brightness can also be used in conjunction with motion to determine occupancy.

ZONE CONTROLLERS

Full color touch panel customizable display



TAR-CT01MAU-SB

TOUCH MA

KEY FEATURES

- ▶ Controls up to 16 indoor units
- ▶ Backlit LCD: full color, touch screen display includes 180 color patterns
- ▶ On/Off timer: turns on and off daily at a set time
- ▶ Fan speed settings
- ▶ Large icons for easy readability
- ▶ Bluetooth® app for users & installer
- ▶ Dimensions: 2-9/16" x 4-3/4" x 9/16"
- ▶ Customize display with customer logo or background colors

Wired remote controller ideal for easy operation, convenience, and energy savings



PAR-33MAA-J

WIRED MA REMOTE CONTROLLER

KEY FEATURES

- ▶ Controls up to 16 zones
- ▶ Large easy-to-see backlit LCD with two display modes: Full or Basic
- ▶ Interlock and control Lossnay units
- ▶ Operation modes: Auto, Cool, Heat, Dry, Fan
- ▶ Fan speed settings
- ▶ Controls air direction (vane direction and ventilation)
- ▶ Dimensions: 4-3/4" x 3/4" x 4-3/4"
- ▶ Dual set point functionality
- ▶ Daylight Saving Time (DST) included

## ZONE CONTROLLERS

Easy-to-use remote for temperature and operation mode control

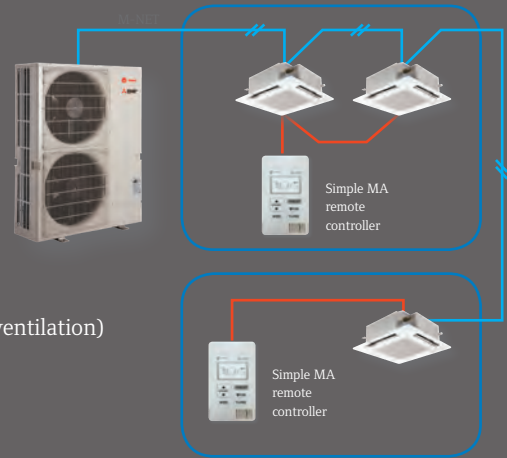


TAC-YT53CRAU-J

### SIMPLE MA

#### KEY FEATURES

- ▶ Controls up to 16 zones
- ▶ Backlit LCD
- ▶ Operation modes of Cool, Heat, Dry, Fan, Auto, Ventilation, Setback (depending on connected equipment)
- ▶ Fan speed settings
- ▶ Controls air direction (vane direction and ventilation)
- ▶ Dimensions: 2-3/4" x 9/16" x 4-3/4"
- ▶ Dual set point functionality



Easy-to-use hand-held remote for temperature and operation mode control for CITY MULTI® and P-Series systems



TAR-FL32MA-E

### WIRELESS MA REMOTE CONTROLLER AND MA RECEIVER

#### KEY FEATURES

- ▶ Hand-held wireless remote control of up to 16 indoor units
- ▶ Operation modes of Cool, Heat, Dry, Fan, Auto, Ventilation
- ▶ Fan speed, airflow direction settings
- ▶ Compatible with P-Series and CITY MULTI systems
- ▶ Requires PAR-SR32MA-W Wireless Receiver. (Built-in as standard on TPKFY models)
- ▶ Dimensions — Remote: 2-1/4" x 3/4" x 6-1/4"  
Receiver: 2-3/4" x 7/8" x 4-12/16"

## kumo cloud®



kumo cloud®

### KEY FEATURES

- ▶ Compatible with CITY MULTI® and Nv- and P-Series systems *without* a central controller
- ▶ Requires the Mitsubishi Electric Wireless Interface (PAC-USWHS002-WF-2)
- ▶ Easy to connect the device to your router using the kumo cloud app
- ▶ App compatible software platforms:
  - Apple iOS 8.0 or later
  - Android 4.1 or later
  - Fire OS 4.1 or later
- ▶ Intuitive settings for simplified use:
  - Group units together
  - Organize groups into sites
  - Batch command units
- ▶ Error and filter status pop-up
- ▶ Advanced functions settings for Nv- and P-Series equipment
- ▶ Autochangeover: System mode is determined using a patent pending algorithm calculating the difference between the room temperature and set point plus weighted consideration for zone priority.
  - Adjustable minimum run time after a changeover event
  - Adjustable maximum wait time before a changeover event

### WIRELESS INTERFACE 2

- ▶ Allows for Trane®/Mitsubishi Electric indoor units to communicate with kumo cloud app and web service
- ▶ Wireless connection via Wi-Fi network
- ▶ Connected to indoor unit via CN105
- ▶ One Wireless Interface required per connected indoor unit
- ▶ Dimensions: 1.82" H x 0.69" W x 2.92" D
- ▶ Radio protocol: IEEE 802.11 b/g/n - 2.4 GHz only Wi-Fi network
- ▶ Internet access required for initial setup and scheduling
- ▶ Contains a CN105 connection to allow for kumo cloud and MHK1 RedLINK™ Wireless Remote Controller to be used on the same indoor unit

Download on the **App Store**

available at **amazon appstore**

GET IT ON **Google play**

WORKS WITH **alexa**

works with the **Google Assistant**

Works with **IFTTT**

Apple and the App Store are registered trademarks of Apple, Inc. Amazon, Alexa, Fire and all related logos are trademarks of Amazon.com, Inc. or its affiliates. Google play is a registered trademark of Google, Inc.



PAC-USWHS002-WF-2

## kumo cloud®

### kumo station®

- ▶ Four outputs to control auxiliary heat, humidifier, \*\*dehumidifier, ERV or HRV\*
- ▶ Controls one or two stages of supplemental heat\*
- ▶ Wireless Interface 2 required to connect to kumo cloud
- ▶ 24 VAC power supply required. Supplied by others
- ▶ Compatible with kumo cloud 2.6 or later

\*Ducted indoor unit fan interlock may be required. Check Install Manual for details.  
\*\*Requires Wireless Temperature and Humidity Sensor



TAC-WHS01HC-E

### WIRELESS TEMPERATURE AND HUMIDITY SENSOR FOR kumo cloud

- ▶ One wireless remote sensor per Wireless Interface 2
- ▶ Connects via Bluetooth Low Energy with Wireless Interface 2
- ▶ Specified open range 33 feet (10 m)
- ▶ Battery powered (1 year battery life)
- ▶ Push notifications when battery is low through kumo cloud app



PAC-USWHS003-TH-1

### OUTDOOR AIR TEMPERATURE SENSOR

- ▶ Used with kumo station to control backup heat and heat pump staging
- ▶ Wire length 60 ft (18.3 m) in the box
- ▶ Wire length can be a maximum of 200 ft (60.9 m) with field supplied 18/2AWG wire
- ▶ Operating Ambient Temperature Range: -40° F to 120° F (-40° C to 49° C)



C7089U1006/U

### IT EXTENDER

- ▶ Extends CN105 connection an additional 50 feet
- ▶ For use with kumo station or Wireless Interface



PAC-WHS01IE-E

# *SPECIFICATIONS TABLES*







TUMY-P\*\*\* AK42NA and H2i®



MODEL NAME			TUMYP 0361AK42(NA/BA)	TUMYP 0481AK42(NA/BA)	TUMYP 0601AK42(NA/BA)	TUMYH 0361AK40NA	TUMYH 0481AK40NA
Power Source			208/230V, 1-Phase, 60Hz				
Capacity *1	Cooling	BTUH	36,000	48,000	60,000	36,000	48,000
	Heating	BTUH	42,000	54,000	66,000	42,000	54,000
Electrical Supply	MCA	A	29		36	36	
	Maximum Overcurrent Protection (MOP)	A	44		45	44	
Recommended Fuse Size		A	30		40		
Short-circuit Current Rating (SCCR)		kA	5				
Fan	Type x Quantity		Propeller Fan x 2				
	Airflow Rate	CFM	3,885		4,879	3,885	
	Motor Output	kW	2.8	3.3	3.9	2.8	3.4
Compressor	Type		INVERTER-driven Scroll Hermetic				
	Operating Range	Cooling	29% to 100%	23% to 100%	28% to 100%	29% to 100%	23% to 100%
		Heating	24% to 100%	18% to 100%	18% to 100%	17% to 100%	16% to 100%
	Motor Output	kW	0.074 + 0.074 (two fan motors)		0.2 + 0.2 (two fan motors)	0.074 + 0.074 (two fan motors)	
Lubricant		FV50S (2.3 liters)		FVC68D (2.3 liters)	FV50S (2.3 liters)		
Refrigerant			R410A				
External Finish			Galvanized Sheets (plus Powder Coating for -BS Model) Munsell 3Y 7.8/1.1				
Dimensions	Height	In.	52-11/16				
	Width	In.	41-11/32				
	Depth	In.	13 (+1)				
Net Weight		Pounds	267		295	267	
Sound Pressure Levels (As Measured in an Anechoic Room)		dB(A)	49/53	51/54	58/59	49/53	51/54
Protection Devices	High Pressure Protection		High Pressure Switch				
	Compressor		Discharge thermo protection, Over-current protection				
	Inverter Circuit		Over-heat protection, Over-current protection				
Refrigerant Pipe Dimensions	Liquid (High Pressure) (Flare)	In.	3/8				
	Gas (Low Pressure) (Flare)	In.	5/8		3/4	5/8	
Indoor Unit	Total Capacity		50 – 130% of Outdoor Unit Capacity				
	Quantity		P05-P36 / 1-9	P05-P54 / 1-12	P05-P72 / 1-12	P05-P36 / 1-9	P05-P54 / 1-12
Operating Temperature Range	Cooling		Outdoor: 5° to 115° F D.B. *3 *4				
	Heating		Outdoor: -13° to +59° F W.B.				
Efficiency Ratings *2							
EER (Ducted/Non-Ducted) *2			12.6 / 15.0	11.3 / 13.1	11.1 / 13.3	12.6 / 15.0	11.3 / 13.1
SEER (Ducted/Non-Ducted) *2			18.3 / 22.3	16.5 / 22.6	17.8 / 20.0	18.3 / 22.3	16.5 / 22.6
COP (Ducted/Non-Ducted) *2			3.7 / 4.0	3.3 / 4.0	3.7 / 4.1	3.7 / 4.0	3.3 / 4.0
HSPF (Ducted/Non-Ducted) *2			11.2 / 12.0	11.0 / 12.0	10.7 / 12.0	11.7 / 12.0	11.0 / 12.0

Notes:

\*1 Rating Conditions:

Cooling | Indoor: 80° F (26.7° C) DB/67° F (19.4° C) WB; Outdoor: 95° F (35° C) DB.  
 Heating | Indoor: 70° F (21.1° C) DB; Outdoor: 47° F (8.3° C) DB/43° F (6.1° C) WB.

\*2 Efficiencies values based in AHRI 210/240 test method.

\*3 When using Wind Baffles (WB-PA3), the minimum operating range is 5° F. Without Wind Baffles, the minimum operating range is 23° F.

\*4 When connecting TPKFY-P006BM/P008HM, TPFFY-P006/008/012CS140A or TPFFY-P006/008/012RE indoor units, the minimum operating range is 50° F.

LIMITED WARRANTY | Seven-year warranty on compressor. One-year warranty on parts.

See our website for details on specific additional application installation coverage.

Specifications are subject to change.

SPECIFICATIONS: TPKFYP ▼

WALL-MOUNTED INDOOR UNIT



TPKFYP\*\*\* (B,H,K)M142(A,B)

MODEL NAME			TPKFYP 006BM142B	TPKFYP 008HM142A	TPKFYP 012HM142A	TPKFYP 015HM142A	TPKFYP 018KM142A	TPKFYP 024KM142A	TPKFYP 030KM142A
Power Source			208/230V, 1-Phase, 60Hz						
Cooling Capacity		BTUH *1	6,000	8,000	12,000	15,000	18,000	24,000	30,000
Heating Capacity		BTUH *1	6,700	9,000	13,500	17,000	20,000	27,000	34,000
Power Consumption	Cooling	W	8	30				70	
	Heating	W	30	30				70	
Current	Cooling	A	.15	.30				0.50	
	Heating	A	.15	.30				0.50	
External Finish		Munsell No.	1.0Y 9.2/0.2						
Dimensions	Height	In.	11-5/8					14-3/8	
	Width	In.	32-1/8	35-3/8				46-1/16	
	Depth	In.	8-7/8	9-13/16				11-5/8	
Net Weight	Unit	Pounds	22	29				46	
Heat Exchanger			Cross Fin (Aluminum Plate Fin and Copper Tube)						
Fan	Type x Quantity		Line Flow Fan x 1						
	Airflow Rate *2	CFM	170 – 180 – 200 – 210	320 – 370 – 413			320 – 370 – 425	570 – 920	710 – 920
	Motor Type		Single-phase Induction Motor	Direct-driven DC Motor					
Air Filter			Polypropylene Honeycomb						
Refrigerant Pipe Dimensions	Liquid (High Pressure) (Flare)	In.	1/4					3/8	
	Gas (Low Pressure) (Flare)	In.	1/2					5/8	
Drain Pipe Dimension (I.D.)		In.	5/8						
Sound Pressure Levels *2		dB(A)	32 – 33 – 35 – 36	34 – 39 – 43			36 – 41 – 45	39 – 49	43 – 49

Notes:

\*1 Cooling/Heating Capacity indicates the maximum value at operation under the following conditions:  
 Cooling | Indoor: 80° F (27° C) D.B./67° F (19° C) W.B.; Outdoor: 95° F (35° C) D.B.  
 Heating | Indoor: 70° F (21° C) D.B.; Outdoor: 45° F (7° C) D.B./43° F (6° C) W.B.

\*2 Airflow Rate/Sound Pressure Levels are at Lo-Mid1-Mid2-Hi, Lo-Mid-Hi, or Lo-Hi.

Specifications are subject to change without notice.

LIMITED WARRANTY | Seven-year compressor and one year parts. Extended warranty of up to 10 years is available. See our website for details on specific additional application installation coverage.



## SPECIFICATIONS: TPLFYP ▼

CEILING CASSETTE INDOOR UNIT

### TPLFYP\*\*\*EM140(1)A

MODEL NAME			TPLFYP 006EM141A	TPLFYP 008EM140A	TPLFYP 012EM140A	TPLFYP 015EM140A	TPLFYP 018EM140A
Power Source			208/230V, 1-Phase, 60Hz				
Cooling Capacity		BTUH *1	6,000	8,000	12,000	15,000	18,000
Heating Capacity		BTUH *1	6,700	9,000	13,500	17,000	20,000
Power Consumption	Cooling	W	20	30	30	30	40
	Heating	W	20	20	20	20	40
Current	Cooling	A	0.19	0.31	0.31	0.31	0.43
	Heating	A	0.14	0.26	0.26	0.26	0.38
External Finish Color (Munsell No.)			MUNSELL (6.4Y 8.9/0.4)				
Dimensions	Height	In.	10-3/16	10-3/16	10-3/16	10-3/16	11-3/4
	Width	In.	33-3/32				
	Depth	In.	33-3/32				
Net Weight *2	Unit/Panel	Pounds	46 / 11	46 / 11	46 / 11	46 / 11	55 / 11
Heat Exchanger			Cross Fin (Aluminum Plate Fin and Copper Tube)				
Fan	Type x Quantity		Turbo Fan x 1				
	Airflow Rate *3	CFM	300 - 424 - 459 - 494	494 - 530 - 565 - 600	494 - 530 - 565 - 600	530 - 547 - 565 - 600	636 - 671 - 742 - 812
	Motor Type		DC Motor				
	Motor Output	W	50	50	50	50	120
Air Filter			PP honeycomb (long life filter, anti-bacterial type)				
Refrigerant Pipe Dimensions	Liquid (High Pressure) (Flare)	In.	1/4				
	Gas (Low Pressure) (Flare)	In.	1/2				
Drain Pipe Dimension (O.D.)		In.	1-1/4				
Sound Pressure Levels (As Measured in an Anechoic Room)*3	(Low-Mid1-Mid2-High)	dB(A)	19 - 23 - 25 - 27	27 - 29 - 30 - 31	27 - 29 - 30 - 31	28 - 29 - 30 - 31	28 - 30 - 32 - 34

MODEL NAME			TPLFYP024EM140A	TPLFYP030EM140A	TPLFYP036EM140A	TPLFYP048EM140A
Power Source			208/230, 1-phase, 60Hz			
Cooling Capacity		BTUH *1	24,000	30,000	36,000	48,000
Heating Capacity		BTUH *1	34,000	40,000	54,000	20,000
Power Consumption	Cooling	W	40	50	80	100
	Heating	W	40	50	80	100
Current	Cooling	A	0.41	0.56	0.90	0.99
	Heating	A	0.36	0.51	0.85	0.94
External Finish Color (Munsell No.)			Grille 6.4Y 8.9/0.4			
Dimensions	Height	In.	11-3/4			
	Width	In.	33-3/32			
	Depth	In.	33-3/32			
Net Weight *2	Unit/Panel	Pounds	46/11	46/11	51/11	55/11
Heat Exchanger			Cross Fin (Aluminum Plate Fin and Copper Tube)			
Fan	Type x Quantity		Turbo Fan x 1			
	Airflow Rate *3	CFM	494 - 565 - 671 - 777	494 - 600 - 742 - 883	706 - 883 - 1060 - 1201	742 - 918 - 1060 - 1236
	Motor Type		DC Motor			
	Motor Output	W	50			120
Air Filter			Polypropylene Honeycomb			
Refrigerant Pipe Dimensions	Liquid (High Pressure) (Flare)	In.	3/8			
	Gas (Low Pressure) (Flare)	In.	5/8			
Drain Pipe Dimension (O.D.)		In.	1-1/4			
Sound Pressure Levels (As Measured in an Anechoic Room)*3	(Low-Mid1-Mid2-High)	dB(A)	28 - 31 - 34 - 37	28 - 32 - 35 - 38	35 - 38 - 41 - 44	36 - 39 - 42 - 45

Notes:

\*1 Cooling/Heating capacity indicates the maximum value at operation under the following conditions:  
Cooling | Indoor: 80° F (26.7° C) DB/67° F (19.4° C) WB; Outdoor: 95° F (35° C) DB.  
Heating | Indoor: 70° F (21° C) DB; Outdoor: 47° F (8° C) DB/43° F (6° C) WB.

\*2 Net weight is shown for unit/grille.

\*3 Airflow rate/sound pressure levels are at (Low-Mid1-Mid2-High).

Ventilation Air: Providing sufficient ventilation air is an important part of every building design ASHRAE Standard 62 provides the minimum ventilation air requirements. Also check local codes.

LIMITED WARRANTY | Seven-year warranty on compressor. One-year warranty on parts. See our website for details on specific additional application installation coverage.

Specifications are subject to change.



**SPECIFICATIONS: TPLFYP** ▼

CEILING CASSETTE INDOOR UNIT

**TPLFYP\*\*\*FM140A**

MODEL NAME			TPLFYP 005FM140A	TPLFYP 008FM140A	TPLFYP 012FM140A	TPLFYP 015FM140A	TPLFYP 018FM140A
Power Source			208/230V, 1-phase, 60Hz				
Cooling Capacity		BTUH *1		8,000	12,000	15,000	18,000
Heating Capacity		BTUH *1	5,600	9,000	13,500	17,000	20,000
Power Consumption	Cooling	W	20	20	20	30	40
	Heating	W	20	20	20	30	40
Current	Cooling	A	0.19	0.22	0.23	0.28	0.40
	Heating	A	0.14	0.17	0.18	0.23	0.35
External Finish (Munsell No.)			Grille: White (6.4Y 8.9/0.4)				
Dimensions	Height	In.	8-3/16				
	Width	In.	22-7/16				
	Depth	In.	22-7/16				
Net Weight *2	Unit/Panel	Pounds	28.9/5.3	28.9/5.3	31.3/5.3		
Heat Exchanger			Cross Fin (Aluminum Plate Fin and Copper Tube)				
Fan	Type x Quantity		Turbo Fan x 1				
	Airflow Rate *3	CFM	230-265-280	230-280-315	245-280-335	265-315-390	315-390-460
	Motor Type		Single-phase Induction Motor				
Air Filter			Polypropylene Honeycomb				
Refrigerant Pipe Dimensions	Liquid (High Pressure) (Flare)	In.	1/4				
	Gas (Low Pressure) (Flare)	In.	1/2				
Condensate Lift Mechanism (Standard)		In.	19-11/16				
Drain Pipe Dimension (O.D.)		In.	1-1/4				
Sound Pressure Levels (As Measured in an Anechoic Room) *3	(Low-Mid-High)	dB(A)	26-28-30	26-30-33	26-30-34	28-33-39	33-39-43

Notes:

\*1 Cooling/Heating capacity indicates the maximum value at operation under the following conditions:  
Cooling | Indoor: 80° F (27° C) D.B./67° F (19° C) W.B.; Outdoor: 95° F (35° C) D.B.  
Heating | Indoor: 70° F (21° C) D.B.; Outdoor: 47° F (8° C) D.B./43° F (6° C) W.B.

\*2 Net weight is shown for unit/grille.

\*3 Airflow rate/sound pressure levels are at (Low-Mid-High).

Ventilation Air: Providing sufficient ventilation air is an important part of every building design. ASHRAE Standard 62 provides the minimum ventilation air requirements. Also check local codes.

Specifications are subject to change without notice.

LIMITED WARRANTY | Seven-year compressor and one year parts. Extended warranty of up to 10 years is available. See our website for details on specific additional application installation coverage.



**SPECIFICATIONS: TPMFYF** ▼

CEILING CASSETTE INDOOR UNIT

**TPMFYP\*\*\*BM140F**

MODEL NAME			TPMFYP006BM140F	TPMFYP008BM140F	TPMFYP012BM140F	TPMFYP015BM140F
Power Source			208/230V, 1-phase, 60Hz			
Cooling Capacity	BTUH *1		6,000	8,000	12,000	15,000
Heating Capacity	BTUH *1		6,700	9,000	13,500	17,000
Power Consumption	Cooling	W	40			50
	Heating	W	40			50
Current	Cooling	A	0.20		0.21	0.26
	Heating	A	0.20		0.21	0.26
External Finish Color (Munsell No.)			Grille: 6.4Y 8.9/0.4			
Dimensions	Height	In.	9-1/16			
	Width	In.	31-31/32			
	Depth	In.	15-9/16			
Net Weight	Unit	Pounds	31			
Heat Exchanger			Cross Fin			
Fan	Type x Quantity		Line flow fan x 1			
	Airflow Rate *2	CFM	230-254-283-307	258-283-304-328	258-283-304-328	272-307-343-378
	Motor Type		DC Brushless Motor			
Air Filter			Polypropylene Honeycomb			
Refrigerant Pipe Dimensions	Liquid (High Pressure) (Flare)	In.	1/4			
	Gas (Low Pressure) (Flare)	In.	1/2			
Condensate Lift Mechanism (Standard)			In. 23-5/8			
Drain Pipe Dimension (O.D.)			In. 1			
Sound Pressure Levels (As Measured in an Anechoic Room) *2	(Low-Mid1-Mid2-High)	dB(A)	27-30-33-35	32-34-36-37	32-34-36-37	33-35-37-39

Notes:

\*1 Cooling/Heating capacity indicates the maximum value at operation under the following conditions:  
 Cooling | Indoor: 80° F (27° C) D.B./67° F (19° C) W.B.; Outdoor: 95° F (35° C) D.B.  
 Heating | Indoor: 70° F (21° C) D.B.; Outdoor: 47° F (8° C) DB/43° F (6° C) W.B.

\*2 Airflow rate/sound levels are at (Low-Mid1-Mid2-High).

Ventilation Air: Providing sufficient ventilation air is an important part of every building design. ASHRAE standard 62 provides the minimum ventilation air requirements. Also check local codes.

Specifications are subject to change without notice.

LIMITED WARRANTY | Seven-year compressor and one year parts. Extended warranty of up to 10 years is available. See our website for details on specific additional application installation coverage.



**SPECIFICATIONS: TPCFYP** ▼

CEILING-SUSPENDED INDOOR UNIT

**TPCFYP\*\*\*KM140B**

MODEL NAME			TPCFYP015KM140B	TPCFYP024KM140B	TPCFYP030KM140B	TPCFYP036KM140B	
Power Source			208/230V, 1 Phase, 60Hz				
Cooling Capacity		BTUH *1	15,000	24,000	30,000	36,000	
Heating Capacity		BTUH *1	17,000	27,000	34,000	40,000	
Power Consumption	Cooling	W	30	40	90	110	
	Heating	W	30	40	90	110	
Current	Cooling	A	0.35	0.41	0.83	0.97	
	Heating	A	0.35	0.41	0.83	0.97	
External Finish		Munsell No.	6.4Y 8.9/0.4				
Dimensions	Height	In.	9-1/16				
	Width	In.	37-13/16	50-3/8	63		
	Depth	In.	26-3/4				
Net Weight	Unit	Pounds	53	71	79	84	
Heat Exchanger			Cross Fin (Aluminum Plate Fin and Copper Tube)				
Fan	Type x quantity		Sirocco Fan x 2	Sirocco Fan x 3	Sirocco Fan x 4		
	Airflow Rate *2		CFM	353-388-424-459	494-530-565-636	703-777-883-989	742-847-953-1,095
	Motor Type		Direct-driven DC Motor				
Air Filter			Polypropylene Honeycomb				
Refrigerant Pipe Dimensions	Liquid (High Pressure) (Flare)	In.	1/4	3/8			
	Gas (Low Pressure) (Flare)	In.	1/2	5/8			
Drain Pipe Dimension (O.D.)		In.	1				
Sound Pressure Levels *2	Lo-Mid1-Mid2-Hi	dB(A)	29-32-34-36	31-33-35-37	34-37-40-43	36-39-42-44	

Note:

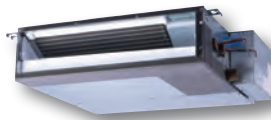
\*1 Cooling/Heating Capacity indicates the maximum value at operation under the following conditions:  
 Cooling | Indoor: 80° F (27° C) D.B./67° F (19° C) W.B.; Outdoor 95° F (35° C) D.B.  
 Heating | Indoor: 70° F (21° C) D.B.; Outdoor: 45° F (7° C) D.B./43° F (6° C) W.B.

\*2 Airflow rate/sound pressure levels are at Low-Mid1-Mid2-Hi.

Ventilation Air: Providing sufficient ventilation air is an important part of every building design ASHRAE Standard 62 provides the minimum air requirements. Also check local codes.

Specifications are subject to change without notice.

LIMITED WARRANTY | Seven-year compressor and one year parts. Extended warranty of up to 10 years is available. See our website for details on specific additional application installation coverage.



## SPECIFICATIONS: TPEFYP ▼

CEILING-CONCEALED INDOOR UNIT

### TPEFYP\*\*\*MS140C

MODEL NAME			TPEFYP006MS140C	TPEFYP008MS140C	TPEFYP012MS140C	TPEFYP015MS140C	TPEFYP018MS140C	TPEFYP024MS140C	
Power Source			208/230V, 1-phase, 60Hz						
Cooling Capacity *2		BTUH	6,000	8,000	12,000	15,000	18,000	24,000	
Heating Capacity *2		BTUH	6,700	9,000	13,500	17,000	20,000	27,000	
Power Consumption	Cooling	W	50/50	60/60	70/70		90/90	120/120	
	Heating	W	30/30	40/40	50/50		70/70	100/100	
Current	Cooling	A	0.42/0.41	0.51/0.49	0.56/0.53	0.57/0.55	0.74/0.70	0.98/0.93	
	Heating	A	0.32/0.31	0.41/0.39	0.46/0.43	0.47/0.45	0.64/0.60	0.88/0.83	
External Finish			Galvanized Steel Sheets						
Dimensions	Height	In.	7-7/8						
	Width	In.	31-1/8			39		46-7/8	
	Depth	In.	27-9/16						
Net Weight	Unit	Pounds	42	46	54	62			
Heat Exchanger			Cross Fin (Aluminum Plate Fin and Copper Tube)						
Fan	Type x Quantity		Sirocco Fan x 2			Sirocco Fan x 3		Sirocco Fan x 4	
	Airflow Rate *3	CFM	176-212-247	194-247-317	211-282-370	282-335-388	353-441-529	423-565-706	
	External Static Pressure *4	In. W.G.	0.02-0.06-0.14-0.20						
	Motor Type		DC Brushless Motor						
Air Filter			Polypropylene Honeycomb Fabric (washable)						
	Liquid (High Pressure) (Brazed)	In.	1/4					3/8	
Refrigerant Pipe Dimensions	Gas (Low Pressure) (Brazed)	In.	1/2					5/8	
Condensate Lift Mechanism (standard)		In.	21-4/16						
Drain Pipe Dimensions (O.D.)		In.	1-1/4						
Sound Pressure Levels *3	Low-Mid-High	dB(A)	22-24-28	23-26-30	23-28-35	28-30-33	30-34-37	30-35-40	

Notes:

\*2 Cooling/Heating capacity indicates the maximum value at operation under the following conditions:  
Cooling | Indoor: 80° F (27° C) D.B./67° F (19° C) W.B.; Outdoor: 95° F (35° C) D.B.  
Heating | Indoor: 70° F (21° C) D.B.; Outdoor: 47° F (8° C) D.B./43° F (6° C) W.B.

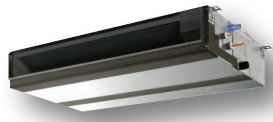
\*3 Airflow rate/sound pressure levels are at (Low-Mid-High).

\*4 External static pressure is factory set to 0.06" W.G.

Ventilation Air: Providing sufficient ventilation air is an important part of every building design ASHRAE Standard 62 provides the minimum air requirements. Also check local codes.

Specifications are subject to change without notice.

LIMITED WARRANTY | Seven-year compressor and one year parts. Extended warranty of up to 10 years is available. See our website for details on specific additional application installation coverage.



## SPECIFICATIONS: TPEFYP ▼

CEILING-CONCEALED INDOOR UNIT

### TPEFYP\*\*\*MA143A

MODEL NAME			TPEFYP006MA143A	TPEFYP008MA143A	TPEFYP012MA143A	TPEFYP015MA143A	TPEFYP018MA143A	TPEFYP024MA143A	
Power Source			208/230V, 1-Phase, 60Hz						
Cooling Capacity		BTUH *1	6,000	8,000	12,000	15,000	18,000	24,000	
Heating Capacity		BTUH *1	6,700	9,000	13,500	17,000	20,000	27,000	
Power Consumption	Cooling	W	60			90		110	170
	Heating	W	40			70		90	150
Current	Cooling	A	0.56/0.52		0.66/0.62	0.67/0.63	0.77/0.73	1.31/1.27	
	Heating	A	0.45/0.41		0.55/0.51	0.56/0.52	0.66/0.62	1.20/1.16	
External Finish			Galvanized Steel Sheet						
Dimensions	Height	In.	9-7/8						
	Width	In.	27-9/16			35-7/16		43-5/16	
	Depth	In.	28-7/8						
Net Weight	Unit	Pounds	49			58		67	
Heat Exchanger			Cross Fin (Aluminum plate fin and copper tube)						
Fan	Type x Quantity		Sirocco Fan x 1					Sirocco Fan x 2	
	Airflow Rate *2	CFM	212-265-300		265-318-371	353-424-494	424-512-600	618-742-883	
	External Static Pressure	In. W.G.	0.14-0.20-0.28-0.40-0.60						
	Motor Type		Direct-driven DC Brushless Motor						
Air Filter			Polypropylene Honeycomb						
Refrigerant Pipe Dimensions	Liquid (High Pressure) (Brazed)	In.	1/4					3/8	
	Gas (Low Pressure) (Brazed)	In.	1/2					5/8	
Drain Pipe Dimension (O.D.)		In.	1-1/4"						
Sound Pressure Levels	Lo-Mid-Hi	dB(A)	26-28-29		28-30-34		26-28-29		
MODEL NAME			TPEFYP027MA143A	TPEFYP030MA143A	TPEFYP036MA143A	TPEFYP048MA143A	TPEFYP054MA143A		
Power Source			208/230V, 1-Phase, 60Hz						
Cooling Capacity		BTUH *1	27,000	30,000	36,000	48,000	54,000		
Heating Capacity		BTUH *1	30,000	34,000	40,000	54,000	60,000		
Power Consumption	Cooling	W	170			240	340	360	
	Heating	W	150			220	320	340	
Current	Cooling	A	1.31/1.27		1.50/1.46	2.08/2.04	2.24/2.2		
	Heating	A	1.20/1.16		1.39/1.35	1.97/1.93	2.13/2.09		
External Finish			Galvanized Steel Sheet						
Dimensions	Height	In.	9-7/8						
	Width	In.	43-5/16			55-1/8		63	
	Depth	In.	28-7/8						
Net Weight	Unit	Pounds	67			86		93	
Heat Exchanger			Cross Fin (Aluminum plate fin and copper tube)						
Fan	Type x Quantity		Sirocco Fan x 2						
	Airflow Rate *2	CFM	618-742-883		812-989-1,165	989-1,201-1,412	1,042-1,254-1,483		
	External Static Pressure	In. W.G.	0.14-0.20-0.28-0.40-0.60						
	Extended Static Motor Type		Direct-driven DC Brushless Motor						
Air Filter			Polypropylene Honeycomb						
Refrigerant Pipe Dimensions	Liquid (High Pressure) (Brazed)	In.	3/8						
	Gas (Low Pressure) (Brazed)	In.	5/8						
Drain Pipe Dimension (O.D.)		In.	1-1/4						
Sound Pressure Levels	Lo-Mid-Hi	dB(A)	28-30-34v		32-37-41	35-40-44	36-41-45		

**Notes:**

\*1 Cooling/Heating Capacity indicates the maximum value at operation under the following conditions:  
 Cooling | Indoor: 80° F (27° C) D.B./67° F (19° C) W.B.; Outdoor 95° F (35° C) D.B.  
 Heating | Indoor: 70° F (21° C) D.B.; Outdoor: 45° F (7° C) D.B./43° F (6° C) W.B.

\*2 Airflow rate/sound pressure levels are at Low-Mid-Hi.

Ventilation Air: Providing sufficient ventilation air is an important part of very building design ASHRAE Standard 62 provides the minimum air requirements. Also check local codes. Specifications are subject to change without notice. LIMITED WARRANTY | Seven-year compressor and one year parts. Extended warranty of up to 10 years is available. See our website for details on specific additional application installation coverage.





## TPEFYP\*\*\*MH140A

MODEL NAME			TPEFYP015MH140A	TPEFYP018MH140A	TPEFYP024MH140A	TPEFYP027MH140A	TPEFYP030MH140A
Power Source			208/230V, 1-phase, 60Hz				
Cooling Capacity *1		BTUH	15,000	18,000	24,000	27,000	30,000
Heating Capacity *1		BTUH	17,000	20,000	27,000	30,000	34,000
Power Consumption	Cooling	W	270/280	270/280	330/320	390	450
	Heating	W	250/260	250/260	310/300	370	430
Current	Cooling	A	1.32/1.25	1.32/1.25	1.61/1.43	1.90/1.73	2.20/2.00
	Heating	A	1.21/1.14	1.21/1.14	1.50/1.32	1.79/1.62	2.09/1.89
External Finish			Unit: Galvanized Steel Plate				
Dimensions	Height	In.	15	15	15	15	15
	Width	In.	29-3/8	29-3/8	29-3/8	40-9/16	40-9/16
	Depth	In.	35-7/16	35-7/16	35-7/16	35-7/16	35-7/16
Net Weight	Unit	Pounds	98	98	100	124	124
Heat Exchanger			Cross Fin (Aluminum Plate Fin and Copper Tube)				
Fan	Type x Quantity		Sirocco Fan x 1	Sirocco Fan x 1	Sirocco Fan x 1	Sirocco Fan x 1	Sirocco Fan x 2
	Airflow Rate *2	CFM	353 - 494	353 - 494	477 - 671	547 - 777	636 - 883
	Ext. Static Pressure (208/230V)	In. W.G.	0.40 - 1.00/0.60 - 1.00				
	Motor Type		Single-phase Induction Motor				
Air Filter			Optional Part				
Refrigerant Pipe Dimensions	Liquid (High Pressure) (Flare)	In.	1/4	1/4	3/8	3/8	3/8
	Gas (Low Pressure) (Flare)	In.	1/2	1/2	5/8	5/8	5/8
Drain Pipe Dimension (O.D.)		In.	1 - 1/4	1 - 1/4	1 - 1/4	1 - 1/4	1 - 1/4
Sound Pressure Levels (Low-High) *2		dB(A) at 230V	39 - 45	39 - 45	40 - 46	38 - 44	38 - 43

MODEL NAME			TPEFYP036MH140A	TPEFYP048MH140A	TPEFYP054MH140A
Power Source			208/230V, 1-phase, 60Hz		
Cooling Capacity *1		BTUH	36,000	48,000	54,000
Heating Capacity *1		BTUH	40,000	54,000	60,000
Power Consumption	Cooling	W	620/610	620/610	630/620
	Heating	W	600/590	600/590	610/600
Current	Cooling	A	3.10/2.74	3.10/2.74	3.11/2.78
	Heating	A	2.99/2.63	2.99/2.63	3.00/2.67
External Finish			Unit: Galvanized Steel Plate		
Dimensions	Height	In.	15	15	15
	Width	In.	47-1/16	47-1/16	47-1/16
	Depth	In.	35-7/16	35-7/16	35-7/16
Net Weight	Unit	Pounds	153	153	157
Heat Exchanger			Cross Fin (Aluminum Plate Fin and Copper Tube)		
Fan	Type x Quantity		Sirocco Fan x 2	Sirocco Fan x 2	Sirocco Fan x 2
	Airflow Rate *2	CFM	936 - 1,342	936 - 1,342	989 - 1,412
	Ext. Static Pressure (208/230V)	In. W.G.	0.40 - 1.00/0.60 - 1.00		
	Motor Type		Single-phase Induction Motor		
Air Filter			Optional Part		
Refrigerant Pipe Dimensions	Liquid (High Pressure)	In.	3/8 (Flare)	3/8 (Flare)	3/8 (Flare)
	Gas (Low Pressure)	In.	5/8 (Flare)	5/8 (Flare)	5/8 (Flare)
Drain Pipe Dimension (O.D.)		In.	1-1/4	1-1/4	1-1/4
Sound Levels *2 (Low-High or Low-Mid-High)		dB(A) at 230V	40 - 46	40 - 46	41 - 47

## Notes:

\*1 Cooling/Heating capacity indicates the maximum value at operation under the following conditions:  
Cooling | Indoor: 80° F (27° C) D.B./67° F (19° C) W.B.; Outdoor: 95° F (35° C) D.B.  
Heating | Indoor: 70° F (21° C) D.B.; Outdoor: 47° F (8° C) D.B./43° F (6° C) W.B.

\*2 Airflow rate/sound levels are at (Low-High or Low-Mid-High).

Ventilation Air: Providing sufficient ventilation air is an important part of every building design.

ASHRAE standard 62 provides the minimum ventilation air requirements. Also check local codes

Specifications are subject to change without notice.

LIMITED WARRANTY | Seven-year compressor and one year parts. Extended warranty of up to 10 years is available. See our website for details on specific additional application installation coverage.

SPECIFICATIONS: TPFFYP-RE/CS

FLOOR-STANDING INDOOR UNIT



TPFFYP\*\*\* (RE/CS)140A

MODEL NAME			TPFFYP006CS140A	TPFFYP008CS140A	TPFFYP012CS140A	TPFFYP015CS140A	TPFFYP018CS140A	TPFFYP024CS140A
Power Source			208/230V, 1 Phase, 60Hz					
Cooling Capacity		BTUH *1	6,000	8,000	12,000	15,000	18,000	24,000
Heating Capacity		BTUH *1	6,700	9,000	13,500	17,000	20,000	27,000
Power Consumption	Cooling	W	51/61	51/61	55/67	65/78	78/93	96/114
	Heating	W	51/61	51/61	55/67	65/78	78/93	96/114
Current	Cooling	A	0.25/0.27	0.25/0.27	0.27/0.30	0.32/0.35	0.38/0.42	0.47/0.51
	Heating	A	0.25/0.27	0.25/0.27	0.27/0.30	0.32/0.35	0.38/0.42	0.47/0.51
External Finish (Munsell No.)			Acrylic Painted (5Y 8/1)					
Dimensions	Height	In.	24-13/16	24-13/16	24-13/16	24-13/16	24-13/16	24-13/16
	Width	In.	41-11/32	41-11/32	46-3/32	46-3/32	55-17/32	55-17/32
	Depth	In.	8-11/16	8-11/16	8-11/16	8-11/16	8-11/16	8-11/16
Net Weight	Unit	Pounds	67	67	71	73	84	89
Heat Exchanger			Cross Fin (Aluminum Plate Fin and Copper Tube)					
Fan	Type x Quantity		Sirocco Fan x 1	Sirocco Fan x 1	Sirocco Fan x 2	Sirocco Fan x 2	Sirocco Fan x 2	Sirocco Fan x 2
	Airflow Rate *2	CFM	194-229	194-229	247-317	300-388	353-459	353-494
	Motor Type		Single Phase Induction Motor					
	Motor Output	W	15	15	18	30	35	63
Air Filter			Standard Filter					
Refrigerant Pipe Dimension	Liquid (High Pressure) (Flare)	In.	1/4	1/4	1/4	1/4	1/4	3/8
	Gas (Low Pressure) (Flare)	In.	1/2	1/2	1/2	1/2	1/2	5/8
Drain Pipe Dimension			O.D. 1-3/32					
Sound Levels *2	(Low-High)	dB(A)	36-41	36-41	37-41	38-43	38-43	40-46

Note:

\*1 Cooling/Heating capacity indicates the maximum value at operation under the following conditions:  
Cooling | Indoor: 80° F (27° C) D.B./67° F (19° C) W.B. ; Outdoor: 95° F (35° C) D.B.  
Heating | Indoor: 70° F (21° C) D.B. ; Outdoor: 45° F (7° C) DB/43° F (6° C) W.B.

\*2 Airflow rate/sound levels are at (Low-High) Ventilation Air: Providing sufficient ventilation air is an important part of every building design ASHRAE standard 62 provides the minimum ventilation air requirements. Also check local codes.

Specifications are subject to change without notice.

LIMITED WARRANTY | Seven-year compressor and one year parts. Extended warranty of up to 10 years is available. See our website for details on specific additional application installation coverage.



MODEL NAME			TPFFYP 006RE140A	TPFFYP 008RE140A	TPFFYP 012RE140A	TPFFYP 015RE140A	TPFFYP 018RE140A	TPFFYP 024RE140A
Power Source			208/230V, 1 Phase, 60Hz					
Cooling Capacity		BTUH *1	6,000	8,000	12,000	15,000	18,000	24,000
Heating Capacity		BTUH *1	6,700	9,000	13,500	17,000	20,000	27,000
Power Consumption	Cooling	W	51/61	51/61	55/67	65/78	78/93	96/114
	Heating	W	51/61	51/61	55/67	65/78	78/93	96/114
Current	Cooling	A	0.25/0.27	0.25/0.27	0.27/0.30	0.32/0.35	0.38/0.42	0.47/0.51
	Heating	A	0.25/0.27	0.25/0.27	0.27/0.30	0.32/0.35	0.38/0.42	0.47/0.51
External Finish (Munsell No.)			Galvanized Sheet Metal					
Dimensions	Height	In.	25-3/16	25-3/16	25-3/16	25-3/16	25-3/16	25-3/16
	Width	In.	34-29/32	34-29/32	39-5/8	39-5/8	49-1/16	49-1/16
	Depth	In.	8-11/16	8-11/16	8-11/16	8-11/16	8-11/16	8-11/16
Net Weight	Unit	Pounds	51	51	58	60	69	71
Heat Exchanger			Cross Fin (Aluminum Plate Fin and Copper Tube)					
Fan	Type x Quantity		Sirocco Fan x 1	Sirocco Fan x 1	Sirocco Fan x 2	Sirocco Fan x 2	Sirocco Fan x 2	Sirocco Fan x 2
	Airflow Rate *2	CFM	194-229	194-229	247-317	300-388	353-459	353-494
	Motor Type		Single Phase Induction Motor					
	Motor Output	kW	0.015	0.015	0.018	0.030	0.035	0.063
Air Filter			Standard Filter					
Refrigerant Pipe Dimension	Liquid (High Pressure) (Flare)	In.	1/4	1/4	1/4	1/4	1/4	3/8
	Gas (Low Pressure) (Flare)	In.	1/2	1/2	1/2	1/2	1/2	5/8
Drain Pipe Dimension			O.D. 1-3/32					
Sound Levels *2	(Low-High)	dB(A)	36-41	36-41	37-41	38-43	38-43	40-46

Notes:

\*1 Cooling/Heating capacity indicates the maximum value at operation under the following conditions:  
Cooling | Indoor: 80° F (27° C) D.B./67° F (19° C) W.B. ; Outdoor: 95° F (35° C) D.B.  
Heating | Indoor: 70° F (21° C) D.B. ; Outdoor: 45° F (7° C) D.B./43° F (6° C) W.B.

\*2 Airflow rate/sound levels are at (Low-High).

Ventilation Air: Providing sufficient ventilation air is an important part of every building design ASHRAE standard 62 provides the minimum ventilation air requirements. Also check local codes. Specifications are subject to change without notice.

LIMITED WARRANTY | Seven-year compressor and one year parts. Extended warranty of up to 10 years is available. See our website for details on specific additional application installation coverage.



**SPECIFICATIONS: TPVFYP** ▼

MULTI-POSITION AIR HANDLER

**TPVFYP\*\*\*AM140A**

MODEL NAME			TPVFYP 012AM140A	TPVFYP 018AM140A	TPVFYP 024AM140A	TPVFYP 030AM140A	TPVFYP 036AM140A	TPVFYP 048AM140A	TPVFYP 054AM140A
Power Source			208/230V, 1-phase, 60Hz						
Cooling Capacity		BTUH *1	12,000	18,000	24,000	30,000	36,000	48,000	54,000
Heating Capacity		BTUH *1	13,500	20,000	27,000	34,000	40,000	54,000	60,000
Dimensions	Height	In.	50-1/4			54-1/4		59-1/2	
	Width	In.	17			21		25	
	Depth	In.	21-5/8						
Net Weight	Unit	Pounds	113			141		172	
Heat Exchanger			Cross fin (Aluminum fin and copper tube)						
Fan	Type x Qty.		Sirocco fan x 1						
	Airflow Rate *2	CFM	280 – 340 – 400	410 – 497 – 585	515 – 625 – 735	613 – 744 – 875	767 – 931 – 1,095	980 – 1,190 – 1,400	1,040 – 1,262 – 1,485
	External Static Pressure	In. W.G.	0.30 – 0.50 – 0.80 (selectable)						
	Motor Type		DC motor						
Filter			Polypropylene Honeycomb						
Refrigerant Pipe Dimensions	Liquid (High Pressure) (Brazed)	In.	1/4			3/8			
	Gas (Low Pressure) (Brazed)	In.	1/2			5/8			
Drain Pipe Dimensions		In.	3/4 FPT						
Sound Pressure Levels (As Measured in an Anechoic Room) *2	Pressure	dB(A)	27 – 31 – 35	28 – 32 – 36	30 – 34 – 38	32 – 36 – 40	35 – 39 – 43	35 – 39 – 43	36 – 40 – 44

**Notes:**

\*1 Cooling/Heating capacity indicates the maximum value at operation under the following conditions:  
 Cooling | Indoor: 80° F (27° C) D.B./67° F (19° C) W.B.; Outdoor: 95° F (35° C) D.B.  
 Heating | Indoor: 70° F (21° C) D.B.; Outdoor: 47° F (8° C) D.B./43° F (6° C) W.B.

\*2 Airflow rate/sound pressure levels are at (Low-Med-High).

Ventilation Air: Providing sufficient ventilation air is an important part of every building design. ASHRAE standard 62 provides the minimum ventilation air requirements. Also check local codes.

**Specifications are subject to change without notice.**

**LIMITED WARRANTY | Seven-year compressor and one year parts. Extended warranty of up to 10 years is available. See our website for details on specific additional application installation coverage.**



For more information visit  
*Visit [Trane.com/Ductless](http://Trane.com/Ductless)*



© 2019 Mitsubishi Electric Trane HVAC US LLC. All rights reserved.

Mitsubishi Electric, Lossnay, and the three-diamond logo are trademarks of Mitsubishi Electric Corporation. CITY MULTI, kumo cloud and H2i are registered trademarks of Mitsubishi Electric US, Inc. Trane and American Standard are registered trademarks of Ingersoll-Rand plc. All other product names mentioned herein are trademarks or registered trademarks of their respective owners.

ENERGY STAR and the ENERGY STAR mark are registered trademarks owned by the United States Environmental Protection Agency.

Use of the AHRI Certified™ mark indicates a manufacturer's participation in the certification program. For verification of certification for individual products, go to [www.ahridirectory.org](http://www.ahridirectory.org).

Specifications shown in this brochure are subject to change without notice. See complete warranty for terms, conditions and limitations. A copy is available from Mitsubishi Electric Trane HVAC US LLC.

SKU: ME-50-TUMY-CAT | 09.2019 | Printed in the USA



Please recycle.