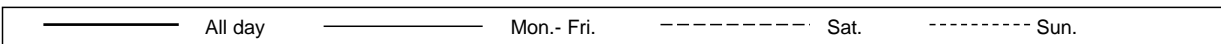
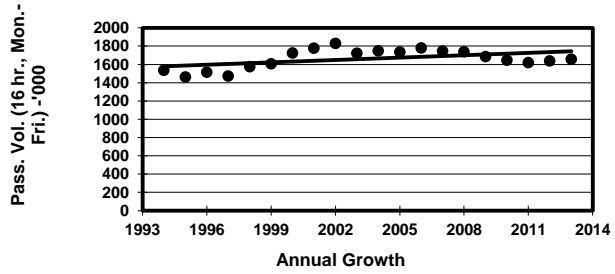
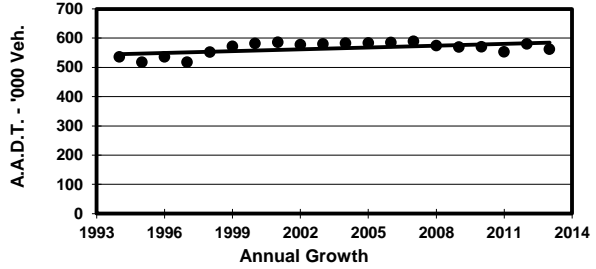
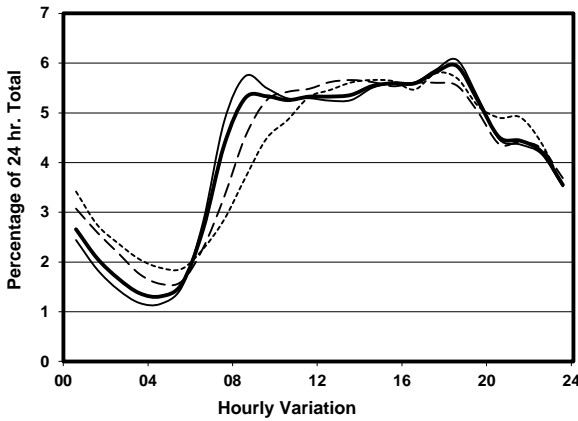
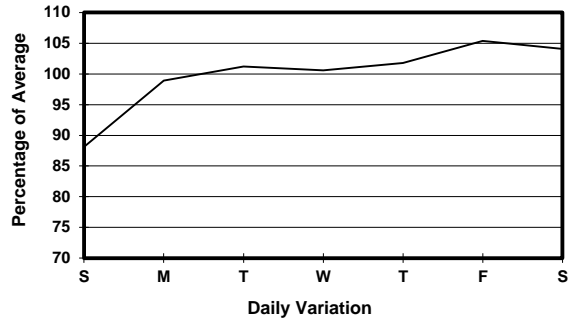
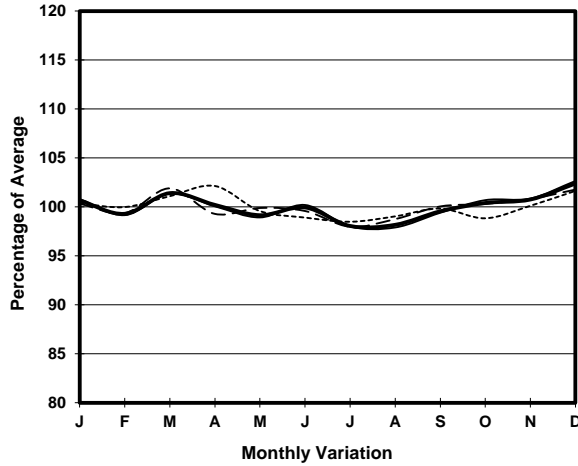


1. TRAFFIC FLOW VARIATION AND GROWTH



2. TRAFFIC CHARACTERISTICS (BY DIRECTION)

Parameter	All - Day	Mon. - Fri.	Sat.	Sun.
SOUTH BOUND				
A.A.D.T.	288620	294980	302620	255620
R 12 / 24 - %	66	67	64.4	62
R 16 / 24 - %	83.2	84.1	81.4	80.1
AM Peak Hour	0800-0900	0800-0900	0900-1000	0900-1000
One-way flow at AM peak hour	16900	18830	17270	12070
T - % (AM)	-	13.2	-	-
PM Peak Hour	1800-1900	1800-1900	1800-1900	1800-1900
One-way flow at PM peak hour	17030	17520	17090	15250
T - % (PM)	-	7.6	-	-
Prop.of commercial vehicles - 16 hr.	-	10.9	-	-
NORTH BOUND				
A.A.D.T.	273470	279420	285810	243300
R 12 / 24 - %	63.5	64.6	61.9	59.1
R 16 / 24 - %	83.1	84.1	81.1	79.7
AM Peak Hour	0900-1000	0800-0900	0900-1000	0900-1000
One-way flow at AM peak hour	13360	14130	13630	10300
T - % (AM)	-	12.5	-	-
PM Peak Hour	1700-1800	1800-1900	1600-1700	1700-1800
One-way flow at PM peak hour	16370	17320	16730	13940
T - % (PM)	-	9.4	-	-
Prop.of commercial vehicles - 16 hr.	-	11.1	-	-

3. OTHER INFORMATION AND COMMENT

4. Vehicle classification and occupancy - Monday to Friday

Time		Class of vehicle									
		Motor Cycle	Private Car	Taxi	Private LB	PLB	Goods veh.		Non Fr. Bus	Fr. Bus	
							Light	M & H		SD	DD
0700-0800	Pro	3.9	26.4	28.8	2.7	4.6	15.2	5.3	6.3	0.1	6.6
	Ocp	1.1	1.4	2.1	6.2	10.4	1.4	1.2	13.3	12.2	28.6
0800-0900	Pro	3.2	42.8	22.5	1.2	3.5	13.8	3.3	4.3	0.1	5.3
	Ocp	1.1	1.3	2.1	4.2	11.0	1.6	1.5	18.2	13.4	35.7
0900-1000	Pro	2.4	37.0	24.2	0.9	3.3	20.2	3.7	3.0	0.1	5.2
	Ocp	1.1	1.3	1.9	2.4	8.7	1.6	1.4	11.9	8.9	20.0
1000-1100	Pro	2.6	30.8	26.0	0.8	2.8	25.2	4.6	2.6	0.1	4.6
	Ocp	1.1	1.4	1.9	2.5	6.9	1.5	1.4	12.4	9.5	18.0
1100-1200	Pro	2.2	32.4	26.2	1.3	2.9	24.9	3.7	2.4	0.1	4.0
	Ocp	1.1	1.4	2.0	2.4	7.7	1.5	1.4	13.4	10.4	18.8
1200-1300	Pro	2.5	36.3	25.3	1.3	2.6	20.8	3.7	3.2	0.1	4.2
	Ocp	1.1	1.4	2.0	4.2	7.5	1.5	1.4	13.0	10.3	18.7
1300-1400	Pro	2.2	33.2	25.6	1.1	3.0	23.1	4.3	2.8	0.1	4.5
	Ocp	1.1	1.5	2.1	2.6	8.0	1.5	1.4	13.3	10.0	20.0
1400-1500	Pro	2.3	35.7	23.4	1.0	2.7	23.8	4.5	2.4	0.1	4.1
	Ocp	1.1	1.5	2.1	2.2	7.5	1.5	1.3	8.6	10.8	19.9
1500-1600	Pro	2.4	37.7	24.1	1.4	2.5	21.4	3.4	2.6	0.1	4.4
	Ocp	1.0	1.4	2.1	4.0	8.9	1.5	1.3	11.0	11.3	22.0
1600-1700	Pro	2.3	39.7	22.8	1.3	2.6	20.5	3.1	2.9	0.1	4.7
	Ocp	1.1	1.5	2.1	3.2	9.0	1.5	1.4	11.0	11.2	23.2
1700-1800	Pro	3.5	41.6	23.6	1.4	3.3	16.4	2.2	3.0	0.1	4.9
	Ocp	1.1	1.5	2.1	3.5	10.8	1.5	1.4	10.2	12.5	29.2
1800-1900 Peak Hour	Pro	3.5	50.4	23.7	0.4	3.8	9.7	1.2	2.8	0.1	4.4
	Ocp	1.1	1.5	2.2	2.5	12.9	1.5	1.3	17.4	14.4	40.4
1900-2000	Pro	3.0	49.9	26.7	0.4	4.4	6.9	1.2	2.9	0.1	4.7
	Ocp	1.1	1.5	2.2	2.2	11.8	1.5	1.2	16.9	12.9	32.8
2000-2100	Pro	2.7	44.1	33.1	0.3	4.6	5.8	1.2	2.9	0.1	5.2
	Ocp	1.2	1.5	2.0	1.9	9.2	1.5	1.3	12.0	7.3	25.0
2100-2200	Pro	2.8	40.5	36.3	0.3	4.7	5.7	1.2	3.0	0.1	5.4
	Ocp	1.2	1.5	2.1	3.2	9.1	1.5	1.4	8.5	7.5	22.5
2200-2300	Pro	2.3	40.0	39.3	0.2	5.0	3.9	1.4	1.6	0.1	6.1
	Ocp	1.2	1.5	2.0	1.9	8.8	1.5	1.5	6.5	7.6	23.1
16 hours	Pro	2.7	38.8	26.5	1.0	3.5	16.4	3.0	3.0	0.1	4.8
	Ocp	1.1	1.4	2.1	3.6	9.5	1.5	1.4	12.9	10.8	25.3

Legend

- Pro.** Proportion of vehicles in % (Sum may not add up to 100% due to figure rounding)
- Ocp.** Average occupancy of vehicles
- M & H** Medium and Heavy