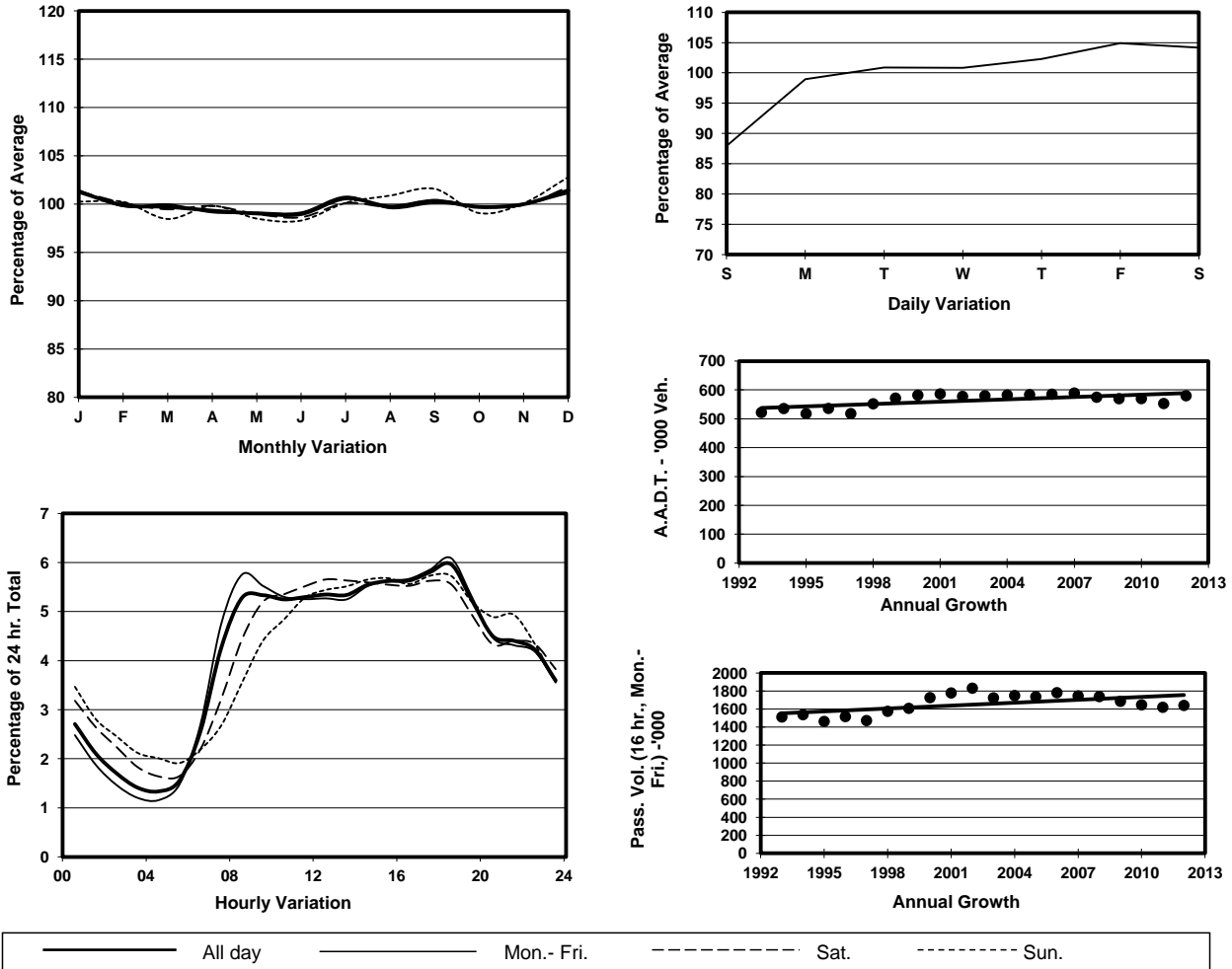


1. TRAFFIC FLOW VARIATION AND GROWTH



2. TRAFFIC CHARACTERISTICS (BY DIRECTION)

Parameter	All - Day	Mon. - Fri.	Sat.	Sun.
SOUTH BOUND				
A.A.D.T.	298840	305770	313010	263410
R 12 / 24 - %	65.9	67.1	64	61.5
R 16 / 24 - %	83.1	84.1	81.1	79.8
AM Peak Hour	0800-0900	0800-0900	0900-1000	0900-1000
One-way flow at AM peak hour	17460	19490	17800	12330
T - % (AM)	-	14	-	-
PM Peak Hour	1800-1900	1800-1900	1800-1900	1800-1900
One-way flow at PM peak hour	17580	18210	17370	15440
T - % (PM)	-	8	-	-
Prop.of commercial vehicles - 16 hr.	-	11.2	-	-
NORTH BOUND				
A.A.D.T.	281010	286990	294750	250000
R 12 / 24 - %	63.4	64.6	61.6	58.6
R 16 / 24 - %	83	84.1	80.6	79.1
AM Peak Hour	0900-1000	0800-0900	0900-1000	0900-1000
One-way flow at AM peak hour	13780	14630	13790	10310
T - % (AM)	-	12.2	-	-
PM Peak Hour	1800-1900	1800-1900	1600-1700	1600-1700
One-way flow at PM peak hour	17000	17880	17260	14290
T - % (PM)	-	9.4	-	-
Prop.of commercial vehicles - 16 hr.	-	10.7	-	-

3. OTHER INFORMATION AND COMMENT

4. Vehicle classification and occupancy - Monday to Friday

Time		Class of vehicle									
		Motor Cycle	Private Car	Taxi	Private LB	PLB	Goods veh.		Non Fr. Bus	Fr. Bus	
							Light	M & H		SD	DD
0700-0800	Pro	4.0	24.2	31.1	2.1	4.8	14.6	5.8	6.8	0.2	6.5
	Ocp	1.1	1.4	2.1	6.5	9.6	1.4	1.3	10.1	8.3	26.1
0800-0900	Pro	3.1	40.3	24.4	1.2	4.0	13.7	3.8	4.3	0.1	5.0
	Ocp	1.1	1.4	1.9	4.8	11.0	1.6	1.3	20.3	10.7	33.4
0900-1000	Pro	2.5	33.8	27.2	0.7	3.4	20.0	4.6	2.7	0.1	5.0
	Ocp	1.1	1.4	1.9	2.7	9.4	1.5	1.3	8.9	8.7	18.1
1000-1100	Pro	2.5	29.4	28.0	1.1	3.1	24.6	4.8	2.2	0.1	4.3
	Ocp	1.1	1.4	1.9	2.2	6.8	1.5	1.3	9.7	6.8	15.7
1100-1200	Pro	2.3	30.7	27.0	1.2	3.3	24.6	4.7	2.1	0.1	4.1
	Ocp	1.0	1.4	1.9	2.6	7.3	1.5	1.4	12.5	8.7	17.4
1200-1300	Pro	2.6	32.5	25.7	1.5	3.4	22.7	4.3	3.3	0.1	3.9
	Ocp	1.1	1.5	2.0	4.2	6.8	1.6	1.4	11.8	9.1	17.0
1300-1400	Pro	2.0	31.9	26.9	1.1	2.8	23.6	4.6	2.9	0.1	4.1
	Ocp	1.1	1.5	2.0	2.8	9.0	1.5	1.4	12.2	9.5	18.9
1400-1500	Pro	2.8	34.0	24.9	1.1	2.8	23.9	4.2	2.2	0.1	3.9
	Ocp	1.0	1.5	2.0	2.7	8.4	1.6	1.4	7.9	9.1	18.6
1500-1600	Pro	2.4	35.8	25.2	1.5	2.8	20.9	4.6	2.7	0.1	4.0
	Ocp	1.1	1.5	2.1	3.4	8.4	1.5	1.4	13.5	10.7	20.0
1600-1700	Pro	2.8	36.5	24.8	1.4	3.0	20.3	3.2	3.3	0.1	4.6
	Ocp	1.1	1.5	2.0	2.9	9.8	1.6	1.3	7.2	11.4	21.6
1700-1800	Pro	3.9	40.5	25.9	1.2	3.3	15.4	2.1	2.8	0.1	4.8
	Ocp	1.1	1.4	2.0	3.3	10.6	1.5	1.4	9.8	10.0	26.8
1800-1900 Peak Hour	Pro	4.2	47.4	25.1	0.4	4.5	9.7	1.3	2.8	0.1	4.5
	Ocp	1.1	1.5	2.1	2.9	12.5	1.5	1.3	20.5	14.1	38.7
1900-2000	Pro	2.8	50.5	27.6	0.2	4.4	6.7	0.8	2.5	0.1	4.3
	Ocp	1.1	1.5	2.1	3.0	11.9	1.5	1.4	12.4	10.3	30.8
2000-2100	Pro	2.9	42.5	34.9	0.2	5.0	5.9	0.8	2.7	0.1	5.0
	Ocp	1.1	1.5	2.0	1.5	9.6	1.5	1.5	13.2	10.1	24.2
2100-2200	Pro	2.3	39.3	39.1	0.3	4.5	5.7	1.1	2.4	0.1	5.3
	Ocp	1.1	1.6	2.0	2.8	9.1	1.5	1.3	6.1	7.8	23.1
2200-2300	Pro	2.5	38.5	42.2	0.2	5.1	3.6	0.9	1.5	0.1	5.4
	Ocp	1.2	1.6	2.1	2.9	9.0	1.5	1.4	8.6	5.3	23.2
16 hours	Pro	2.9	36.8	28.3	1.0	3.7	16.4	3.3	3.0	0.1	4.6
	Ocp	1.1	1.5	2.0	3.6	9.5	1.5	1.4	12.0	9.4	23.8

Legend

- Pro.** Proportion of vehicles in % (Sum may not add up to 100% due to figure rounding)
- Ocp.** Average occupancy of vehicles
- M & H** Medium and Heavy