

# 2018

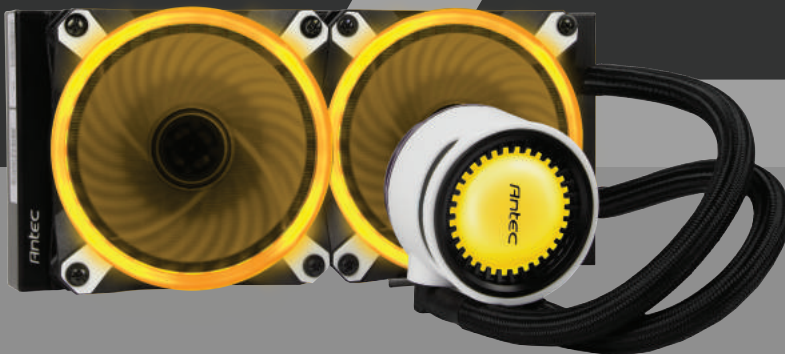
## Antec Products Overview



### ENCLOSURE



### POWER SUPPLY



### COOLER

# INTRODUCING... There will be many new enclosures from Antec in 2018. Here is a selection of the ones which are already or soon available.

## PERFORMANCE SERIES

Antec's Performance One series packs all the features demanded by enthusiasts and professional users into attractive, quiet cases with cutting-edge design.

<b>Main Feature:</b>	<ul style="list-style-type: none"> <li>• HDMI VR READY and adjustable VGA holder support</li> <li>• Antec's Signature Thumbscrews (Side Panel)</li> <li>• Supports vertical VGA mounting position (PCI-E riser card not included)</li> <li>• Adjustable cable management bar</li> <li>• Features space for a slim radiator behind the front panel, giving you the option to mount a radiator with the included removable mounting bracket</li> <li>• Removable vents on both sides of the front panel enhance air intake</li> <li>• 0.8mm aluminum front panel</li> <li>• Isolated PSU chamber enhances thermal and cable management for a clean look</li> <li>• Support for up to six 3.5" HDDs</li> </ul>
<b>Motherboards:</b>	<ul style="list-style-type: none"> <li>• ATX, Micro-ATX, ITX</li> </ul>
<b>Expandability:</b>	<ul style="list-style-type: none"> <li>• 8(Horizontal)+2(Vertical) PCI-E Slots</li> <li>• 3.5" HDD x 6 (convertible with 4 x 2.5"SSD) &amp; 2.5" SSD x 2</li> <li>• Supports up to 6 fans</li> <li>• Additional mounting space behind the front panel for radiators up to 25 mm</li> </ul>
<b>Cooling:</b>	<ul style="list-style-type: none"> <li>• Included fans: 2 (1 x 120 mm Front Intake + 1 x 120 mm Rear Exhaust)</li> <li>• Compatible Antec Liquid Coolers: K120, K240, Mercury 120/240/360 RGB</li> </ul>
<b>EAN-13:</b>	<ul style="list-style-type: none"> <li>• P110 Luce: 0-761345-11611-4</li> <li>• P110 Silent: 0-761345-11610-7</li> </ul>

NEW

### P110 Luce/P110 Silent

Enlightened Performance

### P8

Compelling Performance

<b>Main Feature:</b>	<ul style="list-style-type: none"> <li>• Pre-installed 3 x 120mm White LED fans</li> <li>• Full Tempered Glass Side Panel</li> <li>• Compact Mid-Tower design</li> <li>• Glowing white LED Antec logo</li> <li>• Graphics cards up to 390mm long and boasts water cooling options to bring out your system's best performance.</li> <li>• Equipped with three washable dust filters (Front/Top/Bottom)</li> </ul>
<b>Motherboards:</b>	<ul style="list-style-type: none"> <li>• ATX, Micro-ATX, ITX</li> </ul>
<b>Expandability:</b>	<ul style="list-style-type: none"> <li>• 7 Expansion Slots</li> <li>• Tool-less HDD Trays</li> <li>• Supports up to 7 Fans</li> <li>• Removable Hard Drive Cage</li> </ul>
<b>Cooling:</b>	<ul style="list-style-type: none"> <li>• Included fans: 3 x 120mm white LED Fans</li> <li>• Radiator installation (Front/Top/Rear)</li> </ul>
<b>EAN-13:</b>	<ul style="list-style-type: none"> <li>• 0761345-11607-7</li> </ul>

NEW

### P7 Window Green / Red

Elite Performance

<b>Main Feature:</b>	<ul style="list-style-type: none"> <li>• Mid-Tower Design</li> <li>• Power supply shroud provides better cable management space and thermal management</li> <li>• Windowed Side Panel</li> <li>• The internal space for graphics cards up to 390 mm enable you to maximize your performance potential.</li> </ul>
<b>Motherboards:</b>	<ul style="list-style-type: none"> <li>• ATX, Micro-ATX, Mini-ITX</li> </ul>
<b>Expandability:</b>	<ul style="list-style-type: none"> <li>• 7 Expansion Slots</li> <li>• Tool-less HDD Trays</li> <li>• Removable Hard Drive Cage</li> </ul>
<b>Cooling:</b>	<ul style="list-style-type: none"> <li>• 1 x 120 mm fan included</li> <li>• Radiator installation (Front &amp; Rear)</li> </ul>
<b>EAN-13:</b>	<ul style="list-style-type: none"> <li>• P7 Window Red: 0-761345-11609-1</li> <li>• P7 Window Green: 0-761345-11603-9</li> </ul>

NEW

### P7 Silent

Elite Performance

<b>Main Feature:</b>	<ul style="list-style-type: none"> <li>• Mid-Tower Design</li> <li>• Power supply shroud provides better cable management space and thermal management</li> <li>• Sound Dampening Side Panels</li> <li>• The internal space for graphics cards up to 390 mm enable you to maximize your performance potential.</li> </ul>
<b>Motherboards:</b>	<ul style="list-style-type: none"> <li>• ATX, Micro-ATX, Mini-ITX</li> </ul>
<b>Expandability:</b>	<ul style="list-style-type: none"> <li>• 7 Expansion Slots</li> <li>• Tool-less HDD Trays</li> <li>• Removable Hard Drive Cage</li> </ul>
<b>Cooling:</b>	<ul style="list-style-type: none"> <li>• 2 x 120 mm fan included</li> <li>• Radiator installation (Front &amp; Rear)</li> </ul>
<b>EAN-13:</b>	<ul style="list-style-type: none"> <li>• 0-761345-11608-4</li> </ul>

# PERFORMANCE SERIES



**P6**  
Compact Powerhouse



- Main Feature:**
- Equipped with a built-in logo projector to highlight your gaming set-up
  - Full Tempered Glass Side Panel
  - Compact Micro-Tower Design
  - Power Supply Shroud for better cable management, leading to better airflow
  - Ample cooling support, four expansion slots, removable tool-less hard drive bays, and support for graphics cards up to 390 mm
- Motherboards:**
- Micro-ATX, ITX
- Expandability:**
- 4 Expansion Slots
  - Tool-Less HDD Trays
  - Removable Hard Drive Cage
  - Support up to 6 x 2.5"SSD
- Cooling:**
- Radiator installation (Front & Rear)
  - Supports up to a 240mm Radiator in Front
  - 1 x 120mm White LED Fan Included
- EAN-13:**
- 0-761345-80004-4



**P5**  
Ultimate Silent Micro-ATX case



- Main Feature:**
- Functionality meets minimalist, space-saving design.
  - Front, right, and left panels are lined with sound dampening foam
  - Hinged front panel provides easy access to dust filter and fans
  - 1 x 5.25" bay and support for up to 6 x 2.5" SSD
  - 1 x 1-to-3 Splitter Cable included
- Motherboards:**
- Micro-ATX,ITX, Mini-ITX
- Expandability:**
- 4 Expansion Slots
  - Supports Graphics Cards up to 360 mm
  - Support up to 6 x 2.5"SSD
- Cooling:**
- Supports up to a 240mm Radiator in Front and 120 mm in Rear
  - Included fans: 1 x 140mm Fan in Front & 1 x 120mm Fan in Rear
- EAN-13:**
- 0-761345-80012-9

# DARK FLEET SERIES

<b>Main Feature:</b>	<ul style="list-style-type: none"> <li>• Bold styling with gunmetal accent strips on the front fascia</li> <li>• 4mm tempered glass side panel lets you show off your build</li> <li>• RGB fans with built-in modes and motherboard sync take color customization to the next level</li> </ul>
<b>Motherboards:</b>	<ul style="list-style-type: none"> <li>• ATX, Micro-ATX, Mini-ITX</li> </ul>
<b>Expandability:</b>	<ul style="list-style-type: none"> <li>• 7 Expansion Slots</li> <li>• Tool-Less HDD Trays</li> <li>• Removable Hard Drive Cage</li> <li>• Support up to 7 x 120mm Fans Mount</li> </ul>
<b>Cooling:</b>	<ul style="list-style-type: none"> <li>• Liquid radiator support in front (360 mm) and rear (120 mm) supply advanced cooling for overclocked GPUs and CPUs</li> <li>• Space for 3x120mm or 2x140mm fans in front and on top</li> <li>• Space for 1 x 120 mm Fan in Rear</li> <li>• Included 3 x 120mm RGB Fans in Front</li> </ul>
<b>EAN-13:</b>	<ul style="list-style-type: none"> <li>• 0-761345-80003-7</li> </ul>

**NEW**

**DF500 RGB**  
Versatile Gaming Mid-Tower with RGB Lighting











<b>Main Feature:</b>	<ul style="list-style-type: none"> <li>• Crimson Red accent strips on the front fascia</li> <li>• Dark tinted transparent side panel window and front panel let your components shine through</li> </ul>
<b>Motherboards:</b>	<ul style="list-style-type: none"> <li>• ATX, Micro-ATX, Mini-ITX</li> </ul>
<b>Expandability:</b>	<ul style="list-style-type: none"> <li>• 7 Expansion Slots</li> <li>• Tool-Less HDD Trays</li> <li>• Removable Hard Drive Cage</li> <li>• Support up to 7 x 120mm Fans Mount</li> </ul>
<b>Cooling:</b>	<ul style="list-style-type: none"> <li>• Liquid radiator support in front (360 mm) and rear (120 mm) supply advanced cooling for overclocked GPUs and CPUs</li> <li>• Included 120 mm fan in the rear helps to dissipate heat</li> <li>• Mounting spots for 3x120mm or 2x140mm fans in front and on top</li> </ul>
<b>EAN-13:</b>	<ul style="list-style-type: none"> <li>• 0-761345-80002-0</li> </ul>

**NEW**

**DF500**  
Versatile Gaming Mid-Tower







# GX-SERIES

Antec's line of Gaming chassis is the result of countless hours of collaboration between gamers and designers, to develop a series of cases that gives gamers the best combination of options.

- Main Feature:**
- Two Rainbow 120 RGB Fans included (Three Additional Fan Mounts)
  - Magic box (up to 4 more fans) with 7 color & 4 effect modi incl. bottom LED
  - Space for Water Cooling Radiators (Top up to 240 mm, front up to 360 mm and rear up to 120 mm)
  - Intelligent Cable Management with PSU Cage and Dust Filter
  - 2 x USB 3.0, LED Color Control, Audio In/ Out
- Motherboards:**
- E-ATX, ATX, microATX, Mini-ITX
- Expandability:**
- 5 Drive Bays (2x 3.5" Tool-less, 3x 2.5")
  - 7 Expansion Slots
  - Max. graphics card length: 410 mm/16.1"
- Cooling:**
- 2x 120 mm RGB Fans (Included)
  - 3x 120 mm Fan Mounts
- EAN-13:**
- 0-761345-10001-4
  - 0-761345-73017-4 [Optional 120 mm R69 Rainbow Fan]

**GX1200**  
Built For Gaming



AD-2  
Quiet computing

**GX200/BLUE**  
Why does a well-thought-out gaming case have to be expensive?



AD-2  
Quiet computing

**Main Feature:**

- Has everything a good gaming case constitutes incl. cable management and still doesn't cost much. Just right for all gamers, which depend on the intrinsic values. In the end, FPS and skill are important

**Motherboards:**

- Standard ATX, microATX, Mini-ITX

**Expandability:**

- Four 3.5" Tool-Less Drive Bay
- One Dedicated 2,5" HDD/ SSD Drive Bay
- 7 Expansion Slots
- Maximum Graphics Card Length: 380 mm (15")


**Cooling:**

- Two 120 mm Blue LED Intake Fans Included (Only GX 200 Blue, GX200 Opt.)
- one 120 mm rear exhaust fan included (Only GX 200), GX200 Blue Optional)
- Two Washable Dust Filter, Cable Management

**EAN-13:**

- 0-761345-15200-6 (GX200)
- 0-761345-15202-0 (GX200 Blue)

**GX500/WINDOW/WINDOW BLUE**  
Designed to be Efficient



AD-2  
Quiet computing

**Main Feature:**

- 3 fans included, washable dust filters, space for GPUs up to 15" (380 mm)

**Motherboards:**

- Standard ATX, microATX, Mini-ITX

**Expandability:**

- 7 Expansion Slots
- 8 Drive Bays


**Cooling:**

- 2 x 120 mm Top Fans
- 1 x 120 mm Rear Fan
- 3 x Additional 120 mm Fan Mounts
- 2 x Fan Controls

**EAN-13:**

- 0-761345-15500-7 (Standard)
- 0-761345-15501-4 (Window)
- 0-761345-15502-1 (Window Blue)

**GX505/WINDOW/WINDOW BLUE**  
Pure Gaming – Inside and Outside



AD-2  
Quiet computing

**Main Feature:**

- Cable Management
- GPUs (up to 15" / 380 mm)
- Water-Cooling Support
- Tool-Less Drive Bays
- Removeable PSU and Front Intake Filters
- USB 3.0 Ports

**Motherboards:**

- Standard ATX, microATX, Mini-ITX

**Expandability:**

- 7 Expansion Slots
- 8 Drive Bays

**Cooling:**

- 3 x 120 mm Fans Included
- 3 x 120 mm Additional Fan Mounts

**EAN-13:**

- 0-761345-15506-9 (Standard)
- 0-761345-15504-5 (Window)
- 0-761345-15505-2 (Window Blue)

# CUBE SERIES

- Main Feature:**
- Elegant cube case with tool-less side panels made of anodised aluminium, no intrusive front drive bays, built for gamers and their requirements, easy to build high end systems with watercooling.
  - Green illuminated power button, bottom stripes and logo
  - 2x USB 3.0; I/O button, Audio In/Out
- Motherboards:**
- Mini-ITX
- Expandability:**
- 3 Expansion Slots
  - Space for 240 mm (front) and 140 mm (rear) water cooling radiators
  - Maximum graphics card length: 350 mm (13.78")
  - 2 x 3.5" and 2 x 2.5" or 4 x 2.5"
- Cooling:**
- 1x 120 mm exhaust fan (Pre-Installed)
  - 2x 120 mm intake fans, 1x 140 or 1x 180 mm (Optional)
- EAN-13:**
- 0-761345-00168-7

## Cube - Special Edition Built for Your Ultimate battle



## Cube - EKWB Edition Illuminate Your Desk



- Main Feature:**
- Ambient light (7 different colors switchable), hub for up to 6 fans, 2x USB 3.0, LED light & fan control switch; 2x 3.5" and 2x 2.5" or 4x 2.5", 2x dust filter
- Motherboards:**
- Mini-ITX
- Expandability:**
- 3 Expansion Slots
  - Max. Graphics Card Length: 350 mm/13.8"
- Cooling:**
- 1x 120mm White Led Exhaust Fan
  - 2x 120 mm, or 1x 140/ 180 mm (opt.)
  - Space for 140/ 240mm Radiators
- EAN-13:**
- 0-761345-15910-4



# ISK SERIES

The ISK series is Antec's response to those who need a miniature case to fit all necessary stuff.

- Main Feature:**
  - Includes Clip-On Base and VESA Mount
  - Includes External 90 Watt Power Adapter
  - 2 USB 3.0; 2x USB 2.0
- Motherboards:**
  - Mini-ITX
- Expandability:**
  - 2 x 2.5" Drive Bays
- Cooling:**
  - Perforated Mesh Sides
- EAN-13:**
  - 0-761345-10106-6 (EC Version)
  - 0-761345-10109-7 (UK Version)

## ISK 110 VESA U3

Small, Efficient Builds without Compromises



## ISK 300-150 / 310-150

An Epic Case of Mini Proportions



- Main Feature:**
  - 96mm x 222 mm x 328 mm
  - Includes 150 Watt Power Supply
  - USB 3.0
- Motherboards:**
  - Mini-ITX
- Expandability:**
  - 1 Low-Profile Exp. Slot
- Cooling:**
  - 1 x 80 mm TriCool™ 3-Exhaust Fan
- EAN-13:**
  - 0-761345-08174-0 (ISK 300-150 EC)
  - 0-761345-08184-9 (ISK 300-150 UK)
  - 0-761345-08184-9 (ISK 310-150 EC)
  - 0-761345-08185-6 (ISK 310-150 UK)



# VALUE SOLUTION SERIES

The VSK series is designed with system integrators in mind, emphasizing durability and reliability in an affordable package.

**Main Feature:** • Small but mighty, the compact form factor of the VSK3000E supports up to micro-ATX motherboards and is large enough to accommodate a 335mm graphics card.

**Motherboards:** • Micro-ATX, Mini-ITX

**Expandability:** • 4 Expansion Slots  
• Maximum Graphic Card Size: Up to 335mm Long  
• Maximum CPU Cooler Height: Up to 160mm  
• 1 x 5.25" Tool-Less Drive Bay/ 4 x 3.5" HDD/ 1 x 2.5" SSD

**Cooling:** • Front: 1x120mm/1x 80mm Fan  
• Rear: 1 x 120mm/ 1 x 80 mm Fan or 1 x 120 mm Radiator  
• Left Side: 2x120 mm Fan  
• Fan Included : 1x120 mm Rear Fan

**EAN-13:** • 0-761345-80000-6

**NEW**

**VSK-3000 Elite**  
ADVANCED VALUE SOLUTION SERIES ENCLOSURE



AD2 Quiet Computing

**VSK-2000U3**  
Slim Desktop Case



AD2 Quiet Computing

**Main Feature:** • Features a tool-less, quick release ODD/HDD housing system for fast installation with minimal effort and will have you up and running in no time.

**Motherboards:** • Micro-ATX, Mini-ITX

**Expandability:** • 4 Expansion Slots  
• Maximum Graphic Card Size: Up to 200 mm Long  
• Maximum CPU Cooler Height: Up to 65 mm  
• 1 x 5.25" Tool-Less Drive Bay/ 1 x 3.5" HDD/ 1 x 2.5" SSD

**Cooling:** • 92 mm Temperature Controlled Fan Included

**EAN-13:** • 0-761345-92003-2

**VSK-3000/B-U3/U2 /E-U3**  
Office-Friendly Case for Multiple Builds



AD2 Quiet Computing

**Main Feature:** • Durable, Rolled Steel Chassis  
• Thermally Advantaged Chassis™ improves airflow  
• Black Interior (Only B-U3/U2)  
• 1 x USB 3.0, 1 x USB 2.0 [B-U3/U2]  
• 2 x USB 3.0 (E-U3)

**Motherboards:** • microATX, Mini-ITX

**Expandability:** • 6 Drive Bays  
• 4 Expansion Slots

**Cooling:** • 1 x 92 mm Rear Fan  
• 1 x 92 mm Front Mount

**EAN-13:** • 0-761345-92025-4 (B-U3/U2)  
• 0-761345-92033-9 (E-U3)

# VALUE SOLUTION SERIES

<b>Main Feature:</b>	<ul style="list-style-type: none"> <li>• Constructed with Durable, Galvanized Steel</li> <li>• Meets Intel® Thermally Advantaged Chassis (TAC) 2.0 Guidelines</li> <li>• Thermally Advantaged Chassis™ Improves Airflow</li> <li>• Bottom Closed (GS Conform)</li> <li>• VSK3350 - With 350 Watts PSU, VSK3500 - With 500 Watts PSU</li> <li>• 1x USB 3.0</li> <li>• 1x USB 2.0</li> </ul>
<b>Motherboards:</b>	<ul style="list-style-type: none"> <li>• microATX, Mini-ITX</li> </ul>
<b>Expandability:</b>	<ul style="list-style-type: none"> <li>• 4 Expansion Slots</li> <li>• 6 Drive Bays</li> </ul>
<b>Cooling:</b>	<ul style="list-style-type: none"> <li>• 1 x 92 mm Rear Exhaust Fan</li> <li>• 1 x Additional 92 mm Front Fan Mount</li> </ul>
<b>EAN-13:</b>	<ul style="list-style-type: none"> <li>• 0-761345-92037-7 (VSK 3350E-P-U3/U2 with Antec 350 Watt PSU)</li> <li>• 0-761345-92029-2 (VSK 3500E-U3/U2 with Antec 500 Watt PSU)</li> </ul>

**VSK 3350E-P-U3/U2 / VSK 3500E-U3/U2**  
Inexpensive Combination with 350 or 500 Watt PSU





**VSK 4000E-U3 / B-U3/U2**  
Affordable, Builder-Friendly Case with USB 3.0






<b>Main Feature:</b>	<ul style="list-style-type: none"> <li>• Constructed with Durable, Galvanized Steel</li> <li>• Meets Intel® Thermally Advantaged Chassis (TAC) 2.0 Guidelines</li> <li>• Water Cooling Support – Rear Water Cooling Grommets</li> <li>• With Black Interior [B-U3/U2]</li> <li>• 2 x USB 3.0 [E-U3]</li> <li>• 1 x USB 3.0 + 1x USB 2.0 [B-U3/U2]</li> </ul>
<b>Motherboards:</b>	<ul style="list-style-type: none"> <li>• Standard ATX, microATX, Mini-ITX</li> </ul>
<b>Expandability:</b>	<ul style="list-style-type: none"> <li>• 7 Expansion Slots</li> <li>• 9 Drive Bays</li> </ul>
<b>Cooling:</b>	<ul style="list-style-type: none"> <li>• 1 x 120 mm Rear Exhaust Fan</li> <li>• 1 x 120 mm Front Intake Fan (Optional)</li> </ul>
<b>EAN-13:</b>	<ul style="list-style-type: none"> <li>• 0-761345-92043-8 (VSK 4000E-U3)</li> <li>• 0-761345-92048-3 (VSK 4000B-U3/U2)</li> </ul>

**VSK 4350B-P-U3/U2 / VSK 4500E-P-U3/U2**  
Inexpensive Combination with 350 or 500 Watt PSU





<b>Main Feature:</b>	<ul style="list-style-type: none"> <li>• Constructed with Durable, Galvanized Steel</li> <li>• Meets Intel® Thermally Advantaged Chassis (TAC) 2.0 Guidelines</li> <li>• Water Cooling Support – Rear Water Cooling Grommets</li> <li>• VSK4350 - With 350 Watts PSU, VSK4500 - With 500 Watts PSU</li> <li>• 1x USB 3.0, 1x USB 2.0</li> <li>• With Black Interior (VSK4350B)</li> </ul>
<b>Motherboards:</b>	<ul style="list-style-type: none"> <li>• Standard ATX, microATX, Mini-ITX</li> </ul>
<b>Expandability:</b>	<ul style="list-style-type: none"> <li>• 7 Expansion Slots</li> <li>• 9 Drive Bays</li> </ul>
<b>Cooling:</b>	<ul style="list-style-type: none"> <li>• 1 x 120 mm Rear Exhaust Fan</li> <li>• 1 x 120 mm Front Intake Fan (Optional)</li> </ul>
<b>EAN-13:</b>	<ul style="list-style-type: none"> <li>• 0-761345-92049-0 (VSK 4350B-P-U3/U2 with Antec 350 Watt PSU)</li> <li>• 0-761345-92046-9 (VSK 4500E-P-U3/U2 with Antec 500 Watt PSU)</li> </ul>

**ASK 4000B-U3**  
Affordable and Thoughtfully Constructed






<b>Main Feature:</b>	<ul style="list-style-type: none"> <li>• Constructed with Durable, Galvanized Steel</li> <li>• Meets Intel® Thermally Advantaged Chassis (TAC) 2.0 Guidelines</li> <li>• Water Cooling Support – Rear Water Cooling Grommets</li> <li>• 1x USB 3.0</li> <li>• With Black Interior</li> </ul>
<b>Motherboards:</b>	<ul style="list-style-type: none"> <li>• Standard ATX, microATX, Mini-ITX</li> </ul>
<b>Expandability:</b>	<ul style="list-style-type: none"> <li>• 7 Expansion Slots</li> <li>• 9 Drive Bays</li> </ul>
<b>Cooling:</b>	<ul style="list-style-type: none"> <li>• 1 x 120 mm Rear Exhaust Fan</li> <li>• 1 x 120 mm Front Intake Fan (Optional)</li> </ul>
<b>EAN-13:</b>	<ul style="list-style-type: none"> <li>• 0-761345-10425-8</li> </ul>



# NEW SOLUTION SERIES

Known for its efficiency, low noise and low environmental impact, the New Solution series was designed as a cost-effective solution for system integrators seeking a wide range of powerful cases that deliver strong performance while maintaining efficiency.

- Main Feature:**
  - Timelessly Elegant Design at an Unbeatable Price
  - Intelligent Ventilation System Prevents Overheating
  - Constructed with Durable, Cold-Rolled Steel
  - Meets Intel® Thermally Advantaged Chassis (TAC) 2.0 Guidelines
  - Top-Mount PSU Bay
  - USB 3.0
- Motherboards:**
  - Micro-ATX, Mini-ITX
- Expandability:**
  - 4 Expansion Slots
  - 6 Drive Bays
  - Accepts GPUs up to 12.5" (317.5 mm)
- Cooling:**
  - 1 x 92 mm Rear Exhaust Fan Included
  - 1 x 80 mm Optional Front Fan Mount
- EAN-13:**
  - 0-761345-93100-7

## NSK 3100

Complements Any Home or Office



## NSK 4100

Quiet and Practical Enclosure



- Main Feature:**
  - Constructed with Durable, Cold-Rolled Steel
  - Top-Mount PSU Bay
  - USB 3.0
- Motherboards:**
  - Standard ATX, microATX, Mini-ITX
- Expandability:**
  - 7 Expansion Slots
  - 11 Drive Bays
  - Maximum Graphics Card Length: 280 mm/11,0"
- Cooling:**
  - 1 x 120 mm Rear Fan Included
  - 1 x 120 mm Side Fan Mount
  - 1 x 80/92/120 mm Front Intake Fan Mount
  - Liquid Cooling Ready (For Example Antec H600 Pro)
- EAN-13:**
  - 0-761345-94480-9

# HIGH CURRENT GAMER SERIES

**NEW** High Current Gamer Extreme (Gold) Series  
Fully Modular, Engineered to Meet the Power Demands of High-End Systems

- Wattage:** • 850, 1000
- Efficiency:** • Up to 92%
- Cooling:** • 135 mm Whisper-Quiet High-Quality Fluid-Dynamic Bearing Fan
- Features:**
- Zero RPM Manager
  - HCG Extreme delivers non-stop industrial class performance for high-end computer systems at up to 50°C ambient.
  - PhaseWave™ Design, a server-class full-bridge LLC design with a synchronous rectification based on a DC-DC topology
  - Antec Quality 10-Year Warranty
  - CircuitShield™ — Full suite of industrial grade protections: OCP, OVP, UVP, SCP, OPP, OTP, SIP, NLO
  - Dimension: 160(L) x 150(W) x 86(H)
- EAN-13:**
- 0-761345-11554-4 HCG850 Extreme EC
  - 0-761345-11553-7 HCG850 Extreme GB
  - 0-761345-11560-5 HCG1000 Extreme EC
  - 0-761345-11559-9 HCG1000 Extreme GB



**NEW** High Current Gamer Gold Series  
Fully Modular, Offer Unparalleled Stability and 80 PLUS® Gold-Certified Efficiency



- Wattage:** • 650, 750, 850
- Efficiency:** • Up to 92%
- Cooling:** • 120 mm Whisper-Quiet High-Quality Fluid-Dynamic Bearing Fan
- Features:**
- Zero RPM Manager
  - Compact size 140mm depth power supply is the best choice for compact ATX chassis
  - PhaseWave™ Design, a server-class full-bridge LLC design with a synchronous rectification based on a DC-DC topology
  - Antec Quality 10-Year Warranty
  - CircuitShield™ — Full suite of industrial grade protections: OCP, OVP, UVP, SCP, OPP, OTP, SIP, NLO
  - Dimension: 140(L) x 150(W) x 86(H) mm
- EAN-13:**
- 0-761345-11632-9 HCG650 Gold EC
  - 0-761345-11631-2 HCG650 Gold GB
  - 0-761345-11638-1 HCG750 Gold EC
  - 0-761345-11637-4 HCG750 Gold GB
  - 0-761345-11644-2 HCG850 Gold EC
  - 0-761345-11643-5 HCG850 Gold GB

**NEW** High Current Gamer Bronze Series  
Fully Modular, Offer Unparalleled Stability and 80 PLUS® Bronze-Certified Efficiency



- Wattage:** • 750, 850
- Efficiency:** • Up to 89%
- Cooling:** • 135 mm Double Ball Bearing Fan
- Features:**
- 100% Modular — Improves airflow and reduces clutter
  - DC-DC-Based on a DC-DC topology
  - Antec Quality 5-Year Warranty
  - CircuitShield™ — Full suite of industrial grade protections: OCP, OVP, SCP, OPP, OTP, SIP, NLO
  - 100% Japanese Capacitors
- EAN-13:**
- 0-761345-11543-8 HCG750 Bronze EC
  - 0-761345-11544-5 HCG750 Bronze GB
  - 0-761345-11549-0 HCG850 Bronze EC
  - 0-761345-11550-6 HCG850 Bronze GB

# EARTHWATTS SERIES / HIGH CURRENT PRO SERIES

- Wattage:** • 550, 650, 750
- Efficiency:** • Up to 92%
- Cooling:** • 120 mm Whisper-Quiet High-Quality Fan With Long Lifetime
- Features:**
- PhaseWave™ Design-A server-class full-bridge LLC design with a synchronous rectification based on a DC-DC topology
  - Antec Quality 7-Year Warranty
  - CircuitShield™ – Full suite of industrial grade protections: OCP, OVP, SCP, OPP, OTP, SIP, NLO
  - 99% +12V - Output for Maximum CPU & GPU Support
  - Thermally Controlled Fan

- EAN-13:**
- 0-761345-11614-5 EA550G PRO EC
  - 0-761345-11615-2 EA550G PRO GB
  - 0-761345-11618-3 EA650G PRO EC
  - 0-761345-11619-0 EA650G PRO GB
  - 0-761345-11622-0 EA750G PRO EC
  - 0-761345-11623-7 EA750G PRO GB

**NEW**

**Earthwatts Gold Pro Series**  
Semi-Modular. Saving the Planet, One PSU at a Time

**80 PLUS GOLD** **AD 7** Antec Quality 7 Year Warranty



The image shows a black, cube-shaped Antec Earthwatts Gold Pro Series PSU. The top features a large 120mm fan with the Antec logo. The front panel has a power button and a power switch. The side of the unit is labeled "Antec EAG 750W PRO". Above the unit are two circular logos: "80 PLUS GOLD" and "AD 7 Antec Quality 7 Year Warranty".



- Wattage:** • 850, 1000, 1300
- Efficiency:** • Up to 94%
- Cooling:** • Quiet 135 mm Double Ball Bearing Fan
- Features:**
- Fully Modular Cabling
  - Four +12V Rails with High Load Tolerance
  - Innovative 20+8 pin connectors;
  - OC Link
  - CircuitShield™ Current Protection Suite
  - All Japanese Heavy-Duty Capacitors
  - NVIDIA SLI®-Ready & AMD Crossfire Certified

- EAN-13:**
- 0-761345-23910-3 (850W EC)
  - 0-761345-06248-0 (1000W EC)
  - 0-761345-23930-1 (1300W EC)
  - 0-761345-06251-0 (850W UK)
  - 0-761345-06249-7 (1000W UK)
  - 0-761345-06261-9 (1300W UK)

**High Current Pro Platinum**  
Continuous, Platinum-Rated, Efficient Wattage

**80 PLUS PLATINUM** **AD 7** Antec Quality 7 Year Warranty



The image shows a black, cube-shaped Antec High Current Pro Platinum PSU. The top features a large 135mm fan with the Antec logo. The front panel has a power button and a power switch. The side of the unit is labeled "Antec HCP Platinum 1300W CONTINUOUS POWER". Above the unit are two circular logos: "80 PLUS PLATINUM" and "AD 7 Antec Quality 7 Year Warranty".

# NeoEco SERIES / VALUE POWER SERIES

- Wattage:** • 450, 550, 650  
**Efficiency:** • Up to 88%  
**Cooling:** • Whisper-Quiet High-Quality 120 mm Fan  
 • Powerful and Stable +12V Rail with High Load Capabilities  
 • CircuitShield™ Industrial Protection Suite  
 • Advanced Hybrid Cable Management  
 • High-Performance Capacitors Ensure Tightest DC Stability  
 • Active PFC

- EAN-13:** • 0-761345-10529-3 (450W EC)  
 • 0-761345-10531-6 (550W EC)  
 • 0-761345-10532-3 (650W EC)  
 • 0-761345-10572-9 (450W UK)  
 • 0-761345-10573-6 (550W UK)  
 • 0-761345-10574-3 (650W UK)

## NeoEco Modular Series With Powerful Wattage but Unbelievably Quiet



## VP Series P All Power, No Frills



- Wattage:** • 350, 450, 600, 700  
**Efficiency:** • Up to 82%  
**Cooling:** • Quiet 120 mm Fan  
**Features:** • Dual +12V Rails with High Load Capabilities  
 • Circuit Shield™ Industrial Protection Suite  
 • High-Performance Capacitors Ensure Tightest DC Stability and Regulation  
 • Active PFC

- EAN-13:** • 0-761345-06430-9 (350W EC)  
 • 0-761345-06450-7 (450W EC)  
 • 0-761345-06424-8 (600W EC)  
 • 0-761345-06426-2 (700W EC)  
 • 0-761345-06431-6 (350W UK)  
 • 0-761345-06451-4 (450W UK)  
 • 0-761345-06425-5 (600W UK)  
 • 0-761345-06427-9 (700W UK)

## VP Series PC Our Most Affordable PSU



- Wattage:** • 400, 500  
**Efficiency:** • Up to 82%  
**Cooling:** • Quiet 120 mm Fan  
**Features:** • CircuitShield™ Industrial Protection Suite  
 • High-Performance Capacitors Ensure Tightest DC Stability and Regulation  
 • Active PFC

- EAN-13:** • 0-761345-06484-2 (400W EC)  
 • 0-761345-06485-9 (500W EC)

## VP Series PM With Powerful Wattage but Unbelievably Quiet



- Wattage:** • 650  
**Efficiency:** • Up to 85%  
**Cooling:** • Quiet 120 mm Fan  
**Features:** • Dual +12V Rails with High Load Capabilities  
 • CircuitShield™ Industrial Protection Suite  
 • High-Performance Capacitors Ensure Tightest DC Stability and Regulation  
 • Active PFC

- EAN-13:** • 0-761345-06446-0 (650W EC)



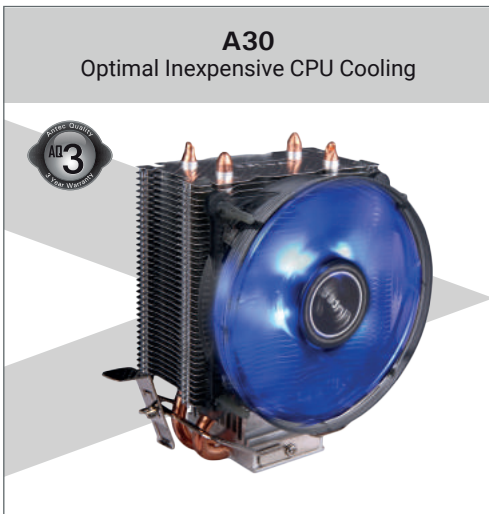
# CPU AIR COOLERS

Easy to install, inexpensive and maximum heat transfer with newest heatpipe technology. These are the summaries of our new CPU Air Coolers. Try it. We will inspire you.

- CPU Support:**
- Intel LGA: 775, 1150, 1151, 1155, 1156, 1366, 2011
  - AMD: AM2, AM2+, AM3, AM3+, FM1, FM2, FM2+
- Fan:**
- 120 mm Blue LED Fan with PWM (800 - 1.900 RPM)
- Airflow:**
- Max. 77 CFM - Noise: 20.3 - 34.5 dBA
- Features:**
- STRAIGHT TOUCH TECHNOLOGY: 8 mm Thick Copper Coldplate
  - HIGH STATIC PRESSURE LED FAN: Quiet 120 mm Blue LED Fan (Max 77 CFM)
  - UNIQUE HEATSINK DESIGN: Two-tiered fin structure dissipates heat efficiently, while aluminium oxide coating prevents oxidation
  - BROAD SOCKET COMPATIBILITY: Compatibility with the newest Intel and AMD platforms, and the push-pin mounting system and included gold thermal paste make for a fast, simple installation
- EAN-13:**
- 0-761345-10920-8



**C400**  
Elite Performance CPU Cooler



**A30**  
Optimal Inexpensive CPU Cooling

- CPU Support:**
- Intel LGA: 775, 1150, 1151, 1155, 1156
  - AMD: AM2(+), AM3, AM3+, FM1, FM2(+)
- Fan:**
- 92 mm Blue LED Fan
- Airflow:**
- 36 CFM - Noise: 20 dBA
- Features:**
- STRAIGHT TOUCH COPPER HEATPIPES: Full CPU contact, more efficient heat transference
  - LARGE ALUMINIUM FINS: 43 x 86 mm aluminium fins offer a larger surface area for heat transference
- EAN-13:**
- 0-761345-10922-2



**A40 Pro**  
The Quiet Heat Killer

- CPU Support:**
- Intel LGA: 775, 1150, 1151, 1155, 1156, 1366
  - AMD: AM2(+), AM3, AM3+, FM1, FM2(+)
- Fan:**
- 92 mm blue PWM LED Fan (800 - 2.200 RPM)
- Airflow:**
- Max. 38 CFM - Noise: 16 - 23 dBA
- Features:**
- STRAIGHT TOUCH COPPER HEATPIPES: Full CPU contact, more efficient heat transference
  - THERMAL CONDUCTIVE COATING: Aluminium oxide coating on the top fin boosts the efficiency of heat transfer and prevents oxidation
- EAN-13:**
- 0-761345-10923-9



**C40**  
High Performance CPU Cooler

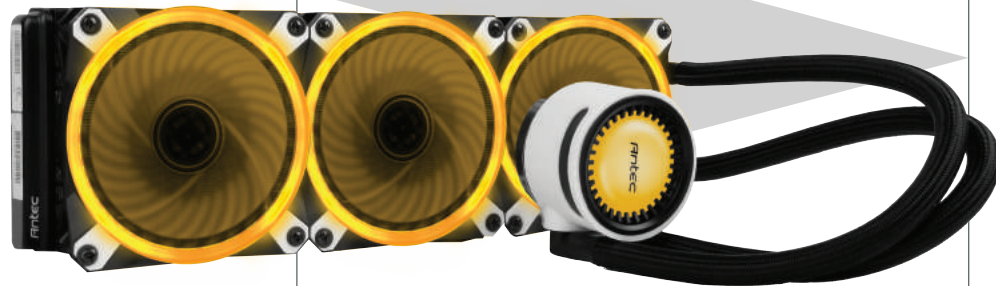
- CPU Support:**
- Intel LGA: 775, 1150, 1151, 1155, 1156, 1366
  - AMD: AM2(+), AM3, AM3+, FM1, FM2(+)
- Fan:**
- 92 mm blue PWM LED Fan (800 - 2.200 RPM)
- Airflow:**
- Max. 38 CFM - Noise: 16 - 23 dBA
- Features:**
- FULL COPPER COLDPLATE: Four high performance heatpipes and 8mm thick copper coldplate for quickly heat away transfer
  - UNIQUE HEATSINK DESIGN: Unique fin structure dissipates heat efficiently, while aluminium oxide coating prevents oxidation
- EAN-13:**
- 0-761345-10929-1



# MERCURY RGB SERIES

Coolness Finds a New High-End Definition

- Intel :**
- LGA 2066 / 2011-V3 / LGA2011 / LGA1366 / LGA1156 / 1155 / 1151 / 1150 / 775
- AMD:**
- TR4/ AM4 / AM3+ / AM3 / AM2+ / AM2 / FM2+ / FM2 / FM1
- Fan(s) :**
- PWM RGB LED Fan
- Airflow :**
- 73.31CFM (2.021 m3/min)
- Features :**
- Large Pump
  - Ultra-Efficient, PWM Radiator Fans
  - Integrated RGB Hub
  - RGB LED Lighting
  - Graphite Bearings
  - Corrosion Resistant Tubing
  - 5 Year Warranty
- EAN-13 :**
- 0-761345-74014-2



**NEW**

## Liquid Cooler Mercury 360 RGB

Upgraded & Engineered for Performance



**NEW**

## Liquid Cooler Mercury 240 RGB

Upgraded & Engineered for Performance



- Intel :**
- LGA 2066 / 2011-V3 / LGA2011 / LGA1366 / LGA1156 / 1155 / 1151 / 1150 / 775
- AMD:**
- TR4/ AM4 / AM3+ / AM3 / AM2+ / AM2 / FM2+ / FM2 / FM1
- Fan(s) :**
- PWM RGB LED Fan
- Airflow :**
- 73.31CFM (2.021 m3/min)
- Features :**
- Large Pump
  - Ultra-Efficient, PWM Radiator Fans
  - Integrated RGB Hub
  - RGB LED Lighting
  - Graphite Bearings
  - Corrosion Resistant Tubing
  - 5 Year Warranty
- EAN-13 :**
- 0-761345-74013-5

**NEW**

## Liquid Cooler Mercury 120 RGB

Upgraded & Engineered for Performance




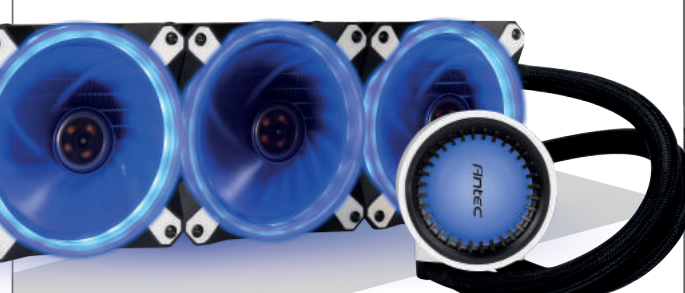
- Intel :**
- LGA 2066 / 2011-V3 / LGA2011 / LGA1366 / LGA1156 / 1155 / 1151 / 1150 / 775
- AMD:**
- TR4/ AM4 / AM3+ / AM3 / AM2+ / AM2 / FM2+ / FM2 / FM1
- Fan(s) :**
- PWM RGB LED Fan
- Airflow :**
- 73.31CFM (2.021 m3/min)
- Features :**
- Large Pump
  - Ultra-Efficient, PWM Radiator Fans
  - Integrated RGB Hub
  - RGB LED Lighting
  - Graphite Bearings
  - Corrosion Resistant Tubing
  - 5 Year Warranty
- EAN-13 :**
- 0-761345-74012-8

# MERCURY SERIES

Coolness Finds a New High-End Definition

- Intel :** • Intel LGA: 775, 1150, 1155, 1156, 1366
- AMD:** • AMD: AM2, AM2+, AM3, AM3+, FM1, FM2
- Fan(s) :** • 3 x 120 mm Blue LED Fan with PWM (900 - 1800 RPM)
- Airflow :** • Max. 73.3 CFM
- Features :**
  - Fan Noise Level: 20 - 30 dBA
  - Pump Noise Level: < 26 dBA
  - Liquid Capacity: 3.5 l/min
  - Fan Air Pressure: 2.25 mm-H2O
  - Tubing Dimensions: 8 x 10 x 315 or 8 x 10 x 348
  - LED (Pump): <48 °C BLUE, 48-60 °C GREEN, >61 °C RED
  - Fan Life Expectancy: 40.000 hours at 25 °C Room (15-65% RH)
  - Pump Life Expectancy: 50.000 hours at 25 °C Room (15-65% RH)
- EAN-13 :** • 0-761345-10985-7

**Liquid Cooler Mercury 360**  
Upgraded & Engineered for Performance

**Liquid Cooler Mercury 240**  
Upgraded & Engineered for Performance




- Intel :** • Intel LGA: 775, 1150, 1155, 1156, 1366
- AMD:** • AMD: AM2, AM2+, AM3, AM3+, FM1, FM2
- Fan(s) :** • 2 x 120 mm Blue LED Fan with PWM (900 - 1800 RPM)
- Airflow :** • Max. 73.3 CFM
- Features :**
  - Fan Noise Level: 20 - 30 dBA
  - Pump Noise Level: < 26 dBA
  - Liquid Capacity: 3.5 l/min
  - Fan Air Pressure: 2.25 mm-H2O
  - Tubing Dimensions: 8 x 10 x 315 or 8 x 10 x 348
  - LED (Pump): <48 °C BLUE, 48-60 °C GREEN, >61 °C RED
  - Fan Life Expectancy: 40.000 hours at 25 °C Room (15-65% RH)
  - Pump Life Expectancy: 50.000 hours at 25 °C Room (15-65% RH)
- EAN-13 :** • 0-761345-10984-0

**Liquid Cooler Mercury 120**  
Upgraded & Engineered for Performance




- Intel :** • Intel LGA: 775, 1150, 1155, 1156, 1366
- AMD:** • AMD: AM2, AM2+, AM3, AM3+, FM1, FM2
- Fan(s) :** • 1 x 120 mm Blue LED Fan with PWM (900 - 1800 RPM)
- Airflow :** • Max. 73.3 CFM
- Features :**
  - Fan Noise Level: 20 - 30 dBA
  - Pump Noise Level: < 26 dBA
  - Liquid Capacity: 3.5 l/min
  - Fan Air Pressure: 2.25 mm-H2O
  - Tubing Dimensions: 8 x 10 x 315 or 8 x 10 x 348
  - LED (Pump): <48 °C BLUE, 48-60 °C GREEN, >61 °C RED
  - Fan Life Expectancy: 40.000 hours at 25 °C Room (15-65% RH)
  - Pump Life Expectancy: 50.000 hours at 25 °C Room (15-65% RH)
- EAN-13 :** • 0-761345-10983-3

# H20K SERIES



## Kuhler H2O K240 All-in-One Closed Loop Liquid Cooler



- Intel :**
  - LGA 2066 / 2011-V3 / LGA2011 / LGA1366 / LGA1156 / 1155 / 1151 / 1150 / 775
- AMD:**
  - AM4 / AM3+ / AM3 / AM2+ / AM2 / FM2+ / FM2 / FM1
- Fan(s) :**
  - PWM Fan with Blue LED
- Airflow :**
  - 73.31CFM
- Features :**
  - Low-Profile CPU Block
  - PWM Fan with Blue LED
  - The Uniquely Engineered Pump is Integrated with the Radiator
  - Teflon-Coated Tubing
  - New Formula for Efficient Heat Conductivity
  - 3 Year Warranty
- EAN-13 :**
  - 0-761345-74016-6



## Kuhler H2O K120 All-in-One Closed Loop Liquid Cooler



- Intel :**
  - LGA 2066 / 2011-V3 / LGA2011 / LGA1366 / LGA1156 / 1155 / 1151 / 1150 / 775
- AMD:**
  - AM4 / AM3+ / AM3 / AM2+ / AM2 / FM2+ / FM2 / FM1
- Fan(s) :**
  - PWM Fan with Blue LED
- Airflow :**
  - 73.31CFM
- Features :**
  - Low-Profile CPU Block
  - PWM Fan with Blue LED
  - The Uniquely Engineered Pump is Integrated with the Radiator
  - Teflon-Coated Tubing
  - New Formula for Efficient Heat Conductivity
  - 3 Year Warranty
- EAN-13 :**
  - 0-761345-74015-9

# CASE FANS

With features like high airflow, low-noise, some with tool-less installation, rubberized mounting, innovative design and vivid LED lights, Antec's full line of case fans offers you all the best in case cooling and much more.

- Size(s):** • 120 mm
- Speeds:** • Max 1.200 RPM
- Colours:** • Seven Colors and Flashing Modes
- Features:** • High Static Pressure Design: The fan blades are engineered to direct the flow of air from the center of the fan to the edges, effectively bringing greater air volume and harnessing the full capabilities of airflow for better cooling efficiency. Hydraulic Bearing: Reduces friction for silent operation and ensures a longer lifetime. RGB LED: Set custom effects easily-just cycle through the 256-color gradient, the breathing, and the flashing modes with the integrated lighting controller button. Anti-vibration Pads: All four corners are fitted with anti-vibration rubber cushions to reduce noise from vibrations between the fan and the chassis, for silent performance.
- EAN-13:** • 0-761345-73017-4

## Rainbow 120 RGB LED

The Seven-Color High-Performance switchable RGB fan



## TrueQuiet™ 120/140

Ultra Quiet Fan with Tool-Less Mounting



- Size(s):** • 120 mm
- Speeds:** • 120 mm: 600/1000 U/min  
• 140 mm: 500/800 U/min
- Colours:** • Clear Plastic  
• Orange Silicone Grommets
- Features:** • Uniquely-designed fan blades increase air flow while reducing turbulence and noise  
• Silicone grommets to reduce vibration  
• Tool-Less Mounting  
• Included 3-Pin to Molex adapter
- EAN-13:** • 0-761345-75250-3 (120 mm)  
• 0-761345-75260-2 (140 mm)

## TrueQuiet™ 120 UFO

Low Noise with Outstanding Appearance



- Size(s):** • 120 mm
- Speeds:** • Two-Speed Control: 600/1000 RPM
- Colours:** • Four Colored LEDs and illuminated Ring  
• Orange Silicone Grommets
- Features:** • Uniquely-designed fan blades increase air flow while reducing turbulence and noise  
• Silicone grommets to reduce vibration  
• Tool-Less Mounting  
• Included 3-Pin to Molex Adapter
- EAN-13:** • 0-761345-75290-9 (TrueQuiet 120 UFO Red)  
• 0-761345-75293-0 (TrueQuiet 120 UFO Green)  
• 0-761345-75291-6 (TrueQuiet 120 UFO Blue)  
• 0-761345-75292-3 (TrueQuiet 120 UFO White)

## TwoCool™ 120/140

Ideal Upgrade for Underperforming Stock Fans



- Size(s):** • 120 mm or 140 mm
- Speeds:** • 120 mm: 600/ 1200 RPM  
• 140 mm: 500/ 850 RPM
- Colours:** • Black frame, LEDs in Blue
- Features:** • Quiet Sleeve Bearings  
• Speed Control Switch
- EAN-13:** • 0-761345-75230-5 (140 mm)  
• 0-761345-75246-6 (120 mm)  
• 0-761345-75241-1 (120 mm Blue)



**TriCool**  
The Cooling Solution for All Your Needs



- Size(s):** • 80 mm, 120 mm
- Speeds:** • 1500/2000/2600 RPM (80 mm)  
• 1200/1600/2200 RPM (92 mm)  
• 1200/1600/2000 RPM (120 mm)
- Colours:** • Clear Plastic
- Features:** • Three-Speed Switch  
• 3- and 4-pin power connectors for motherboard or power supply
- EAN-13:** • 0-761345-75080-6 (80 mm)  
• 0-761345-75120-9 (120 mm)

**TriCool DBB**  
Double Ball-Bearing, Triple-Speed



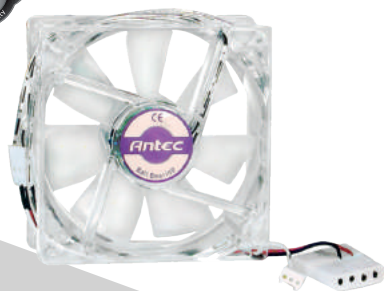
- Size(s):** • 80 mm
- Speeds:** • 1500/2000/2600 RPM
- Colours:** • Clear Plastic
- Features:** • Double ball-bearing design for longer lasting performance
- EAN-13:** • 0-761345-75081-3

**Big Boy 200™**  
Powerful 200 mm Three-Speed Fan



- Size(s):** • 200 mm
- Speeds:** • 400, 600, 800 RPM
- Colours:** • Black Frame
- Features:** • Double Ball Bearing Design for Longer Life  
• Three-Speed Switch
- EAN-13:** • 0761345-75200-8

**Pro 80 mm**  
Standard Case Fans



- Size(s):** • 80 mm
- Speeds:** • 2600 RPM
- Colours:** • Clear Plastic
- Features:** • Fan Speed Monitoring Capability with Compatible Motherboards  
• 3-Pin Connector & 4-Pin Adapter with Power Pass-Through
- EAN-13:** • 0-761345-75000-4

**Pro DBB**  
Double Ball Bearing for Longer Life



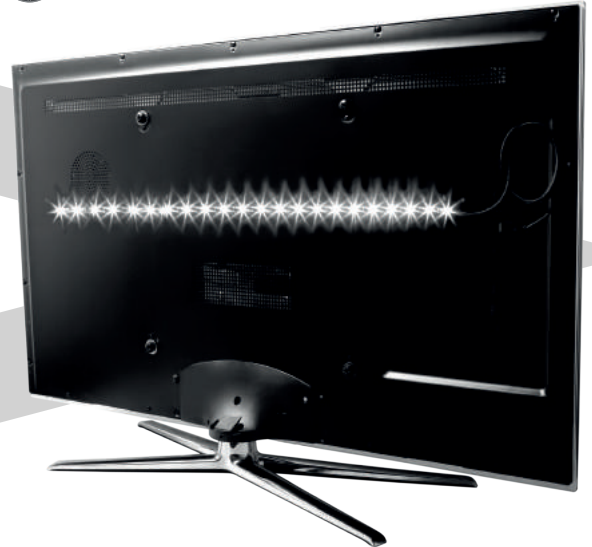
- Size(s):** • 80 mm, 120 mm
- Speeds:** • 2600 RPM (80 mm), 2000 RPM (120 mm)
- Colours:** • Clear Plastic
- Features:** • Fan Speed Monitoring Capability with Compatible Motherboards  
• 3-Pin Connector & 4-Pin Adapter with Power Pass-Through
- EAN-13:** • 0-761345-75001-1 (80 mm)  
• 0-761345-75003-8 (120 mm)



# ACCESSORIES

- Features:**
- Bias lighting adds a subtle white backlight to your (HD)TV that enhances image contrast, improves picture quality and increases viewing comfort.
  - Convenient On/Off Switch
- Dimensions:**
- Cable length: 1300 mm (Bias)
  - 1300 mm (HDTV Bias)
- Colours:**
- White LEDs
  - Black Cable
- Requirements:**
- Powered USB Port or Powered USB Hub
  - HDTV Light strip can be cut to accommodate HDTVs under 60"
- EAN-13:**
- 0-761345-77020-0 (Bias)
  - 0-761345-77021-7 (HDTV Bias)

## Bias Lighting & HDTV Bias Lighting Enhance Your HDTV Experience



## Formula 6 Diamond-Caliber Thermal Compounds

- Features:**
- Lighter, easier to spread
  - Stable composition won't crack or dry out
  - Thermal Conductivity: 5.3 W/mK
- Dimensions:**
- 4g/Syringe
- Colours:**
- Grey
- EAN-13:**
- 0-761345-77060-6

