

 SYN PRODUCTS™

2022 Product Guide

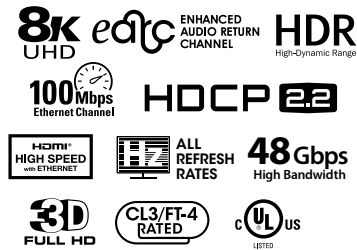


Pro-Grade 8K

Ultra High Speed 8K HDMI® Cables with Ethernet



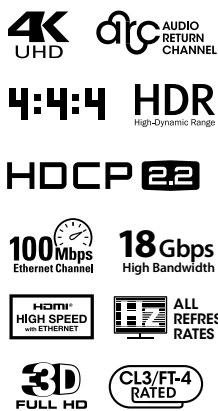
- High-purity copper conductor
- Aluminum mylar foil and aluminum braid shielding
- HDPE + FPE insulation
- Orange+Black PVC housing with gold-plated connector
- Certified 8K@60Hz or 4K@120Hz Resolution



Item Code	Length	Gauge
SW-HDMI-8K-0-5M	0.5 m – 1.64 ft.	30 AWG
SW-HDMI-8K-1M	1.0 m – 3.25 ft.	30 AWG
SW-HDMI-8K-2M	2.0 m – 6.56 ft.	30 AWG
SW-HDMI-8K-3M	3.0 m – 9.84 ft.	28 AWG
SW-HDMI-8K-4M	4.0 m – 13.12 ft.	28 AWG

Pro-Installer Bulk-Pack

4K Ultra HD Premium Certified High Speed HDMI® Cables with Ethernet



- High-purity copper conductor
- Aluminum mylar foil
- HDPE + FPE insulation
- Black PVC jacket
- HDR compliant
- Black PVC housing with gold-plated connector
- Certified 4K/60Hz 4:4:4

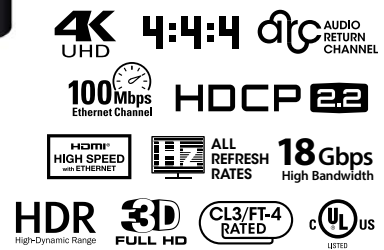
Item Code	Length
SW-PI-HDMI-0-5M-20	(20 per Box) 0.5 m – 1.64 ft.
SW-PI-HDMI-1M-10	(10 per Box) 1.0 m – 3.25 ft.
SW-PI-HDMI-2M-10	(10 per Box) 2.0 m – 6.56 ft.
SW-PI-HDMI-3M-10	(10 per Box) 3.0 m – 9.84 ft.
SW-PI-HDMI-4M-5	(5 per Box) 4.0 m – 13.12 ft.
SW-PI-HDMI-5M-5	(5 per Box) 5.0 m – 16.40 ft.

Pro-Grade 4K

High Speed 4K HDMI® Cables with Ethernet



- High-purity copper conductor
- Aluminum mylar foil and aluminum braid shielding
- HDPE + FPE insulation
- Orange+Black PVC housing with gold-plated connector
- Certified 4K/60Hz 4:4:4 up to 8 meters



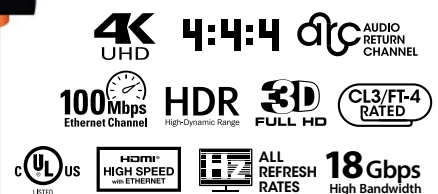
Item Code	Length	Gauge
SW-HDMI-0-5M	0.5 m – 1.64 ft.	30 AWG
SW-HDMI-1M	1.0 m – 3.25 ft.	30 AWG
SW-HDMI-2M	2.0 m – 6.56 ft.	30 AWG
SW-HDMI-3M	3.0 m – 9.84 ft.	30 AWG
SW-HDMI-4M	4.0 m – 13.12 ft.	30 AWG
SW-HDMI-5M	5.0 m – 16.40 ft.	30 AWG
SW-HDMI-6M	6.0 m – 19.68 ft.	28 AWG
SW-HDMI-8M	8.0 m – 26.25 ft.	28 AWG
SW-HDMI-10M	10.0 m – 32.80 ft.	28 AWG
SW-HDMI-12M	12.0 m – 39.37 ft.	26 AWG

Super-Slim

High Speed HDMI® 4K Cables with Ethernet



- High-purity copper conductor
- Aluminum mylar foil and aluminum braid shielding
- HDPE + FPE insulation
- Black PVC jacket
- Orange+Black PVC housing with gold-plated connector



Item Code	Length	Gauge
SW-HDMI-S-0-5M	0.5 m – 1.64 ft.	34 AWG
SW-HDMI-S-1M	1.0 m – 3.25 ft.	34 AWG
SW-HDMI-S-1-5M	1.5 m – 4.92 ft.	34 AWG
SW-HDMI-S-2M	2.0 m – 6.56 ft.	34 AWG

NEW

Pro-Grade **FT-4 AOC**

Active Optical Cable



- Active Optical Cables use both copper and fiber conductors, for reliable long distance transmission over a lighter and more flexible cable
- No external power required
- Polyethylene insulation
- Orange+Black PVC housing with gold-plated connector

4K UHD **4:4:4** **ARC** AUDIO RETURN CHANNEL

100Mbps Ethernet Channel **HDCP 2.2**

HDMI HIGH SPEED with ETHERNET **ALL REFRESH RATES** **18Gbps** High Bandwidth

HDR High-Dynamic Range **3D FULL HD** **CL3/FT-4 RATED** **UL US**

Item Code	Length
SW-HDMI-AOC-15M	15 m – 49.21 ft.
SW-HDMI-AOC-20M	20 m – 65.62 ft.
SW-HDMI-AOC-30M	30 m – 98.40 ft.
SW-HDMI-AOC-45M	45 m – 147.60 ft.
SW-HDMI-AOC-60M	60 m – 196.85 ft.

NEW

Pro-Grade **FT-6 AOC**

CMP FT-6 Fire Rated Active Optical Cable



- Active Optical Cables use both copper and fiber conductors, for reliable long distance transmission over a lighter and more flexible cable
- No external power required
- Polyethylene insulation
- Orange+Black PVC housing with gold-plated connector
- CMP Fire Rated

4K UHD **4:4:4** **ARC** AUDIO RETURN CHANNEL

100Mbps Ethernet Channel **HDCP 2.2**

PLENUM CMP FT-6 **HDMI HIGH SPEED with ETHERNET** **HDR** High-Dynamic Range **ALL REFRESH RATES**

3D FULL HD **18Gbps** High Bandwidth **UL US**

Item Code	Length
SW-HDMI-AOC-FT6-15M	15 m – 49.21 ft.
SW-HDMI-AOC-FT6-20M	20 m – 65.62 ft.
SW-HDMI-AOC-FT6-30M	30 m – 98.40 ft.
SW-HDMI-AOC-FT6-45M	45 m – 147.60 ft.
SW-HDMI-AOC-FT6-60M	60 m – 196.85 ft.

Subwoofer Cable

Superior Performance Audio Cable



- 24 AWG 6N pure OFC copper conductors
- LDPE (low-density polyethylene) dielectric insulation
- Double-shielding (aluminum mylar® foil + full copper braid)
- Precision machined, low-profile RCA connectors with 24K gold-plated contacts

Item Code	Length
SW-SUB-4M	4.0 m – 13.12 ft.
SW-SUB-6M	6.0 m – 19.68 ft.
SW-SUB-8M	8.0 m – 26.25 ft.

Fiber Optic Cable

Superior Performance Toslink™ Digital Audio Cable



- Plastic fiber Core conductor
- PE (polyethylene) insulation
- Black PVC jacket
- Black anodized aluminum housing gold-plated copper collar
- Polished fiber lens

Item Code	Length
SW-OPTI-1M	1.0 m – 3.25 ft.
SW-OPTI-2M	2.0 m – 6.56 ft.
SW-OPTI-3M	3.0 m – 9.84 ft.
SW-OPTI-4M	4.0 m – 13.12 ft.
SW-OPTI-6M	6.0 m – 19.68 ft.
SW-OPTI-8M	8.0 m – 26.25 ft.
SW-OPTI-12M	12.0 m – 39.37 ft.
SW-OPTI-15M	15.0 m – 49.21 ft.

RCA Audio Interconnect

Superior Performance Audio Cable



- 24 AWG 6N pure OFC copper conductors
- Aluminum mylar foil braid shielding
- FPE (foam polyethylene) insulation
- Black PVC jacket
- Black anodized aluminum housing with gold-plated copper contacts

Item Code	Length
SW-RCA-0-5M	0.5 m – 1.64 ft.
SW-RCA-1M	1.0 m – 3.25 ft.
SW-RCA-2M	2.0 m – 6.56 ft.
SW-RCA-3M	3.0 m – 9.84 ft.
SW-RCA-6M	6.0 m – 19.68 ft.
SW-RCA-8M	8.0 m – 26.25 ft.
SW-RCA-10M	10.0 m – 32.80 ft.

MP3 Audio Cable

3.5mm Stereo Male to Stereo RCA (Male)



- High-purity copper conductor
- Aluminum mylar foil braid shielding
- FPE (foam polyethylene) insulation
- Black PVC jacket
- Black anodized aluminum housing with gold-plated copper contacts
- Precision machined 3.5 mm stereo mini plug to 2 RCA connectors with 24K gold-plated contacts

Item Code	Length	Gauge
SW-MP3-1M	1.0 m – 3.25 ft.	24 AWG
SW-MP3-2M	2.0 m – 6.56 ft.	24 AWG

RCA Y Adapter

RCA (Male) to 2x RCA (Female)



- High-purity copper conductor
- Aluminum mylar foil braid shielding
- FPE (foam polyethylene) insulation
- Black PVC jacket
- Black anodized aluminum housing with gold-plated copper contacts
- Ideal for splitting mono output from preamp to 2 devices

Item Code	Length	Gauge
SW-RCA-MFF	1.0 m – 3.25 ft.	24 AWG

MP3 Audio Cable

3.5mm Stereo (Male) to 2x RCA (Female)



Item Code	Length
SW-35RCAMF-2M	2.0m – 6.56 ft.

3.5mm Stereo (Male) to 2x RCA (Male)



Item Code	Length
SW-35RCAMM-2M	2.0m – 6.56 ft.
SW-35RCAMM-3M	3.0m – 9.84 ft.

3.5mm Stereo (Male) to 3.5mm Stereo (Male)



- Gold-plated connectors
- Oxygen-free copper wire core
- 2 Colour molded connectors provide excellent strain relief

Item Code	Length
SW-35MM-1M	1.0 m – 3.25 ft.
SW-35MM-2M	2.0m – 6.56 ft.
SW-35MM-3M	3.0m – 9.84 ft.
SW-35MM-5M	5.0m – 16.40 ft.

RCA Audio Interconnect

2x RCA (Male) to 2x RCA (Male)



- Gold-plated connectors
- Oxygen-free copper wire core
- 2 Colour molded connectors provide excellent strain relief

Item Code	Length
SW-STMM-1M	2.0m – 6.56 ft.
SW-STMM-2M	3.0m – 9.84 ft.
SW-STMM-3M	3.0m – 9.84 ft.

RCA (Female) to 2x RCA (Male)



- Split RCA signal, or converts signal from dual RCA jacks (stereo) to a single RCA jack (mono)
- Gold-plated connectors
- Oxygen-free copper wire core
- 2 Colour molded connectors provide excellent strain relief

Item Code	Length
SW-RCAF2M	2.0m – 6.56 ft.

Fiber Optic Patch Cord

Duplex LC/LC(UPC) OM3

50/125µm ø2.0mm PVC Aqua

Insertion Loss Spec

Multimode:

UPC(IL≤0.3dB)

Tested By (JDSURM 3950@850 and 1310nm)

1M

SF-LCLCOM3-1M

3M

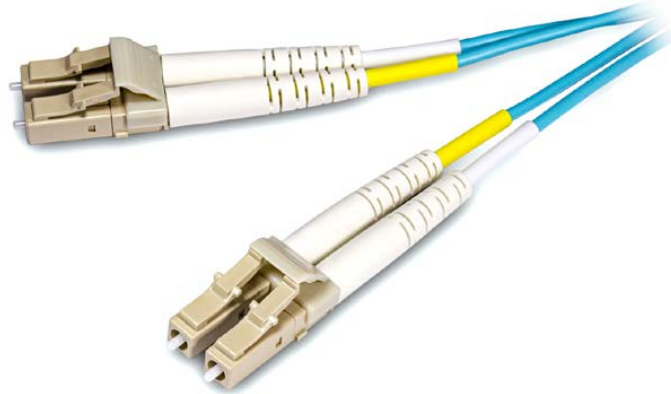
SF-LCLCOM3-3M

5M

SF-LCLCOM3-5M

7M

SF-LCLCOM3-7M



Duplex LC/LC(UPC) SM

9/125µm ø2.0mm PVC Yellow

Insertion Loss Spec

Singlemode:

UPC(IL≤0.3dB) PC(RL≥50dB)

Tested By (JDSURM 3750@1310 and 1550nm)

1M

SF-LCLCSM-1M

3M

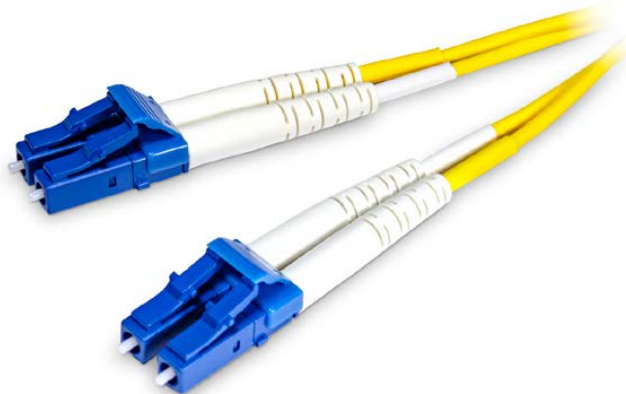
SF-LCLCSM-3M

7M

SF-LCLCSM-7M

10M

SF-LCLCSM-10M



Duplex LC/SC(UPC) SM

9/125µm ø2.0mm PVC Yellow

Insertion Loss Spec

Singlemode:

UPC(IL≤0.3dB) PC(RL≥50dB)

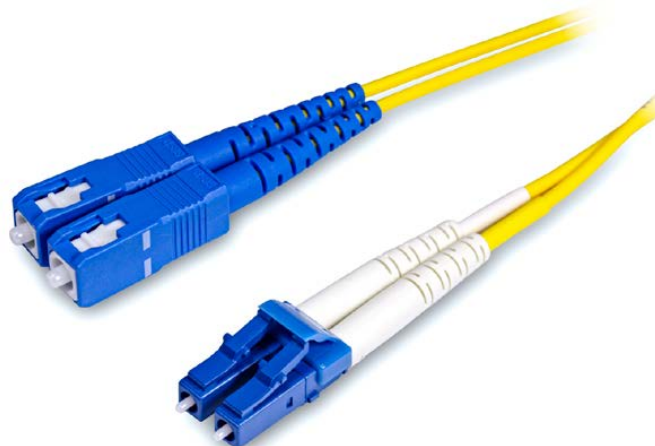
Tested By (JDSURM 3750@1310 and 1550nm)

1M

SF-LCSCSM-1M

3M

SF-LCSCSM-3M



SYNCABLE™

Audio In-Wall Cable

- Stranded oxygen free bare copper
- Twisted conductors
- PVC jacket: -20° C ~ +75° C
- PVC insulation
- Descending footmarkers
- EZ mark print legend
- c(UL) CMG
- FT-4



EZ MARK PRINT LEGEND

SyncWire – Oxygen Free Copper – Multi Room Audio c(UL) FT-4 – Room: ENT FAM LR DR POWD OFF MBR MBA BR1 BR2 BR3 BR4 GAR GYM 1 2 3 4 5 6 – 001/300m

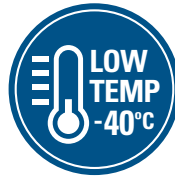
Item Code	Description	Colour	O.D.	Voltage	Length
18 Gauge in-wall					
SW-AUD182BR-150	2c 18awg 16x30 Stranded	Brown	0.212"	300	150 m – 492 ft.
SW-AUD182WH-150	2c 18awg 16x30 Stranded	White	0.212"	300	150 m – 492 ft.
SW-AUD182BR-300	2c 18awg 16x30 Stranded	Brown	0.212"	300	300 m – 984 ft.
SW-AUD182WH-300	2c 18awg 16x30 Stranded	White	0.212"	300	300 m – 984 ft.
SW-AUD184BR-150	4c 18awg 16x30 Stranded	Brown	0.244"	300	150 m – 492 ft.
SW-AUD184WH-150	4c 18awg 16x30 Stranded	White	0.244"	300	150 m – 492 ft.
16 Gauge in-wall					
SW-AUD162GN-150	2c 16awg 26x30 Stranded	Green	0.228"	300	150 m – 492 ft.
SW-AUD162BK-150	2c 16awg 26x30 Stranded	Black	0.228"	300	150 m – 492 ft.
SW-AUD162WH-150	2c 16awg 26x30 Stranded	White	0.228"	300	150 m – 492 ft.
SW-AUD162GN-300	2c 16awg 26x30 Stranded	Green	0.228"	300	300 m – 984 ft.
SW-AUD162BK-300	2c 16awg 26x30 Stranded	Black	0.228"	300	300 m – 984 ft.
SW-AUD162WH-300	2c 16awg 26x30 Stranded	White	0.228"	300	300 m – 984 ft.
SW-AUD164GN-150	4c 16awg 26x30 Stranded	Green	0.263"	300	150 m – 492 ft.
SW-AUD164BK-150	4c 16awg 26x30 Stranded	Black	0.263"	300	150 m – 492 ft.
SW-AUD164WH-150	4c 16awg 26x30 Stranded	White	0.263"	300	150 m – 492 ft.
SW-AUD164BK-300	4c 16awg 26x30 Stranded	Black	0.263"	300	300 m – 984 ft.
SW-AUD164GN-300	4c 16awg 26x30 Stranded	Green	0.263"	300	300 m – 984 ft.
SW-AUD164WH-300	4c 16awg 26x30 Stranded	White	0.263"	300	300 m – 984 ft.
14 Gauge in-wall					
SW-AUD142BL-150	2c 14awg 41x30 Stranded	Blue	0.276"	300	150 m – 492 ft.
SW-AUD142BK-150	2c 14awg 41x30 Stranded	Black	0.276"	300	150 m – 492 ft.
SW-AUD142WH-150	2c 14awg 41x30 Stranded	White	0.276"	300	150 m – 492 ft.
SW-AUD142BL-300	2c 14awg 41x30 Stranded	Blue	0.276"	300	300 m – 984 ft.
SW-AUD142BK-300	2c 14awg 41x30 Stranded	Black	0.276"	300	300 m – 984 ft.
SW-AUD144BL-75	4c 14awg 41x30 Stranded	Blue	0.319"	300	75 m – 246 ft.
SW-AUD144WH-75	4c 14awg 41x30 Stranded	White	0.319"	300	75 m – 246 ft.
SW-AUD144BL-150	4c 14awg 41x30 Stranded	Blue	0.319"	300	150 m – 492 ft.
SW-AUD144BK-150	4c 14awg 41x30 Stranded	Black	0.319"	300	150 m – 492 ft.
SW-AUD144WH-150	4c 14awg 41x30 Stranded	White	0.319"	300	150 m – 492 ft.
SW-AUD144BL-300	4c 14awg 41x30 Stranded	Blue	0.319"	300	300 m – 984 ft.
SW-AUD144BK-300	4c 14awg 41x30 Stranded	Black	0.319"	300	300 m – 984 ft.
SW-AUD144WH-300	4c 14awg 41x30 Stranded	White	0.319"	300	300 m – 984 ft.
12 Gauge in-wall					
SW-AUD122WH-75	2c 12awg 65x30 Stranded	White	0.318"	300	75 m – 246 ft.
SW-AUD122YL-75	2c 12awg 65x30 Stranded	Yellow	0.318"	300	75 m – 246 ft.
SW-AUD122BK-150	2c 12awg 65x30 Stranded	Black	0.318"	300	150 m – 492 ft.
SW-AUD122WH-150	2c 12awg 65x30 Stranded	White	0.318"	300	150 m – 492 ft.
SW-AUD122BK-300	2c 12awg 65x30 Stranded	Black	0.318"	300	300 m – 984 ft.



SYN(C)ABLE™

Low Temp Audio In-Wall Cable

- Stranded oxygen free bare copper
- Twisted conductors
- PVC jacket: **-40° C ~ +105° C (Low Temp)**
- PVC insulation
- Descending footmarkers
- EZ mark print legend
- c(UL) CMG
- FT-4



EZ MARK PRINT LEGEND

SyncWire – Oxygen Free Copper – Multi Room Audio c(UL) FT-4 – Room: ENT FAM LR DR POWD OFF MBR MBA BR1 BR2 BR3 BR4 GAR GYM 1 2 3 4 5 6 – 001/300m

Item Code	Description	Colour	O.D.	Voltage	Length
16 Gauge in-wall					
SW-AUD162GN-150LT	2c 16awg 26x30 Stranded	Green	0.228"	300	150 m – 492 ft.
SW-AUD162WH-150LT	2c 16awg 26x30 Stranded	White	0.228"	300	150 m – 492 ft.
SW-AUD162GN-300LT	2c 16awg 26x30 Stranded	Green	0.228"	300	300 m – 984 ft.
SW-AUD162WH-300LT	2c 16awg 26x30 Stranded	White	0.228"	300	300 m – 984 ft.
SW-AUD164GN-150LT	4c 16awg 26x30 Stranded	Green	0.263"	300	150 m – 492 ft.
SW-AUD164WH-150LT	4c 16awg 26x30 Stranded	White	0.263"	300	150 m – 492 ft.
14 Gauge in-wall					
SW-AUD142BL-150LT	2c 14awg 41x30 Stranded	Blue	0.276"	300	150 m – 492 ft.
SW-AUD142WH-150LT	2c 14awg 41x30 Stranded	White	0.276"	300	150 m – 492 ft.
SW-AUD144BL-150LT	4c 14awg 41x30 Stranded	Blue	0.319"	300	150 m – 492 ft.
SW-AUD144WH-150LT	4c 14awg 41x30 Stranded	White	0.319"	300	150 m – 492 ft.

Network Cable

Cat-5e 350MHz 24-4pr FT-4 150 Meter Pull Box



- 24 AWG solid copper conductors, twisted pairs
- Polyolefin insulation – ripcord
- PVC FT-4 jacket
- -20°C + 75°C
- ETL verified c(UL) UL
- Available in **blue or white**

Item Code	Length	Gauge
SW-CAT5E-150M-BL	150 m – 492 ft.	24 AWG
SW-CAT5E-150M-WH	150 m – 492 ft.	24 AWG

Cat-6 550MHz 23-4pr FT-4 150 Meter Pull Box



- 23 AWG solid copper conductors, twisted pairs
- Polyolefin insulation – ripcord
- PVC FT-4 jacket
- -20°C + 75°C
- ETL verified c(UL) UL
- Available in **blue or white**

Item Code	Length	Gauge
SW-CAT6-150M-BL	150 m – 492 ft.	23 AWG
SW-CAT6-150M-WH	150 m – 492 ft.	23 AWG

Coaxial Cable

RG6 CATV FT-4 Cable 150 Meter Pull Box



- 18 AWG solid conductor
- Dual shield 60% aluminum braid with 100% aluminum foil
- PVC FT-4 jacket
- Swept to 3000MHz -20°C + 75°C
- ETL verified c(UL) UL
- Available in **black or white**

Item Code	Length	Gauge
SW-RG6BK-150M	150 m – 492 ft.	18 AWG
SW-RG6WH-150M	150 m – 492 ft.	18 AWG



Patch Panel

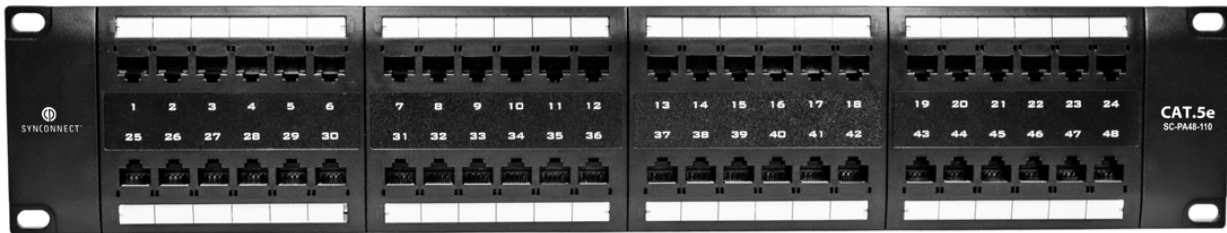
SC-PA24-110 Cat5E 24 Port Patch Panel 110 Style



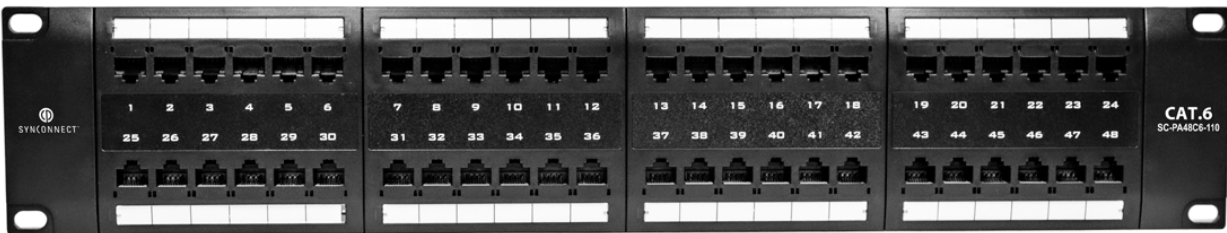
SC-PA24C6-110 Cat6 24 Port Patch Panel 110 Style



SC-PA48-110 Cat5E 48 Port Patch Panel 110 Style



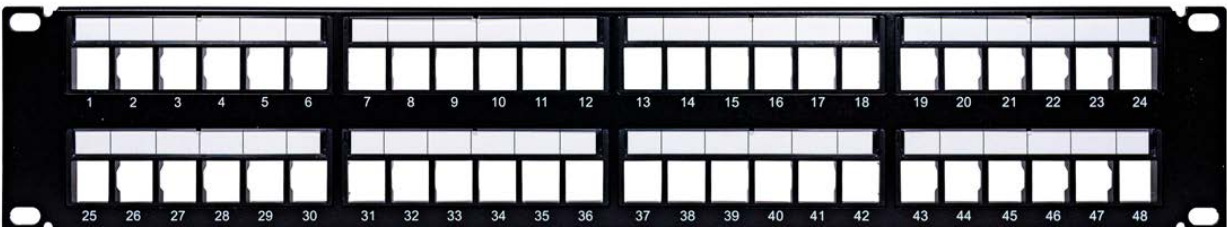
SC-PA48C6-110 Cat6 48 Port Patch Panel 110 Style



SC-PA24-1U 1U Blank 24 Port Keystone Patch Panel



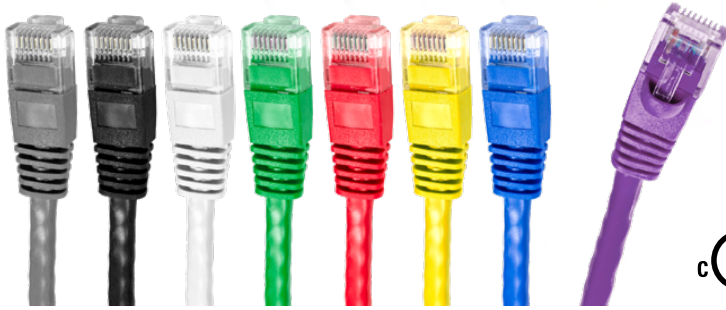
SC-PA48-2U 2U Blank 48 Port Keystone Patch Panel





Ethernet Patch Cable

Bare Copper 24AWG Conductor, UTP, Unshielded, PVC Jacket, ETL, cUL, FT-4 rated



CAT-5E

Length	Item Code
1'	SW-CAT5E-1FT-BK
	SW-CAT5E-1FT-BL
	SW-CAT5E-1FT-GN
	SW-CAT5E-1FT-GY
	SW-CAT5E-1FT-RD
	SW-CAT5E-1FT-YL
2'	SW-CAT5E-1FT-WH
	SW-CAT5E-2FT-BK
	SW-CAT5E-2FT-BL
	SW-CAT5E-2FT-GN
	SW-CAT5E-2FT-GY
	SW-CAT5E-2FT-RD
3'	SW-CAT5E-2FT-YL
	SW-CAT5E-2FT-WH
	SW-CAT5E-3FT-BK
	SW-CAT5E-3FT-BL
	SW-CAT5E-3FT-GN
	SW-CAT5E-3FT-GY
5'	SW-CAT5E-3FT-RD
	SW-CAT5E-3FT-YL
	SW-CAT5E-3FT-WH
	SW-CAT5E-5FT-BK
	SW-CAT5E-5FT-BL
	SW-CAT5E-5FT-GN
7'	SW-CAT5E-5FT-RD
	SW-CAT5E-5FT-YL
	SW-CAT5E-5FT-WH
	SW-CAT5E-7FT-BK
	SW-CAT5E-7FT-BL
	SW-CAT5E-7FT-GN
10'	SW-CAT5E-7FT-YL
	SW-CAT5E-7FT-WH
	SW-CAT5E-10FT-BK
	SW-CAT5E-10FT-BL
	SW-CAT5E-10FT-GN
	SW-CAT5E-10FT-YL
15'	SW-CAT5E-10FT-WH
	SW-CAT5E-15FT-BK
	SW-CAT5E-15FT-BL
	SW-CAT5E-15FT-WH
	SW-CAT5E-25FT-BK
	SW-CAT5E-25FT-BL
25'	SW-CAT5E-25FT-WH
	SW-CAT5E-35FT-BK
	SW-CAT5E-35FT-BL
	SW-CAT5E-35FT-WH
	SW-CAT5E-50FT-BK
	SW-CAT5E-50FT-BL
50'	SW-CAT5E-50FT-WH

CAT-6

Length	Item Code
1'	SW-CAT6-1FT-BK
	SW-CAT6-1FT-BL
	SW-CAT6-1FT-GN
	SW-CAT6-1FT-GY
	SW-CAT6-1FT-RD
	SW-CAT6-1FT-YL
2'	SW-CAT6-1FT-WH
	SW-CAT6-1FT-VL
	SW-CAT6-2FT-BK
	SW-CAT6-2FT-BL
	SW-CAT6-2FT-GN
	SW-CAT6-2FT-GY
3'	SW-CAT6-2FT-RD
	SW-CAT6-2FT-YL
	SW-CAT6-2FT-WH
	SW-CAT6-2FT-VL
	SW-CAT6-3FT-BK
	SW-CAT6-3FT-BL
5'	SW-CAT6-3FT-GN
	SW-CAT6-3FT-GY
	SW-CAT6-3FT-RD
	SW-CAT6-3FT-YL
	SW-CAT6-3FT-WH
	SW-CAT6-3FT-VL
7'	SW-CAT6-5FT-BK
	SW-CAT6-5FT-BL
	SW-CAT6-5FT-GN
	SW-CAT6-5FT-RD
	SW-CAT6-5FT-YL
	SW-CAT6-5FT-WH
10'	SW-CAT6-7FT-BK
	SW-CAT6-7FT-BL
	SW-CAT6-7FT-GN
	SW-CAT6-7FT-YL
	SW-CAT6-7FT-WH
	SW-CAT6-7FT-VL
15'	SW-CAT6-10FT-BK
	SW-CAT6-10FT-BL
	SW-CAT6-15FT-BK
	SW-CAT6-15FT-BL
	SW-CAT6-15FT-BK
	SW-CAT6-15FT-BL
25'	SW-CAT6-25FT-BK
	SW-CAT6-25FT-BL
	SW-CAT6-25FT-WH
	SW-CAT6-35FT-BK
	SW-CAT6-35FT-BL
	SW-CAT6-35FT-WH
50'	SW-CAT6-50FT-BK
	SW-CAT6-50FT-BL

10Gb/s Cat-6 Super Slim Ethernet Patch Cable

Bare Copper 28AWG Conductor, UTP, Unshielded, PVC Jacket, ETL, cUL



CAT-6

Length	Item Code
0.5'	SW-CAT6-S-0-5BK
	SW-CAT6-S-0-5BL
	SW-CAT6-S-0-5GN
	SW-CAT6-S-0-5WH
	SW-CAT6-S-0-5YL
	SW-CAT6-S-0-5VL
1'	SW-CAT6-S-1BK
	SW-CAT6-S-1BL
	SW-CAT6-S-1GN
	SW-CAT6-S-1WH
	SW-CAT6-S-1YL
	SW-CAT6-S-1VL
2'	SW-CAT6-S-2BK
	SW-CAT6-S-2BL
	SW-CAT6-S-2GN
	SW-CAT6-S-2WH
	SW-CAT6-S-2YL
	SW-CAT6-S-2VL
3'	SW-CAT6-S-3BK
	SW-CAT6-S-3BL
	SW-CAT6-S-3GN
	SW-CAT6-S-3WH
	SW-CAT6-S-3YL
	SW-CAT6-S-3VL
5'	SW-CAT6-S-5BK
	SW-CAT6-S-5BL
	SW-CAT6-S-5GN
	SW-CAT6-S-5WH
	SW-CAT6-S-5YL
	SW-CAT6-S-5VL
6'	SW-CAT6-S-6BK
	SW-CAT6-S-6BL
	SW-CAT6-S-6GN
	SW-CAT6-S-6GR
	SW-CAT6-S-6WH
	SW-CAT6-S-6YL
7'	SW-CAT6-S-7BK
	SW-CAT6-S-7BL
	SW-CAT6-S-7GN
	SW-CAT6-S-7WH
	SW-CAT6-S-7YL
	SW-CAT6-S-7VL
NEW 10'	SW-CAT6-S-10BK
NEW 15'	SW-CAT6-S-15BK

Jacket Colour Code:

	GY = GREY		RD = RED
	BK = BLACK		YL = YELLOW
	WH = WHITE		BL = BLUE
	GN = GREEN		VL = VIOLET

Keystone, Snap-In Module

CAT-6 90-Degree UTP 90-Degree. T568A/B, 110 IDC



BULK PACK

**25/PACK
CAT-6**



SC-CAT6J (White)



SC-CAT6J-GN (Green)



SC-CAT6J-25
(White)



SC-CAT6J-BK (Black)



SC-CAT6J-RD (Red)



SC-CAT6J-BL-25
(Blue)



SC-CAT6J-BL (Blue)



SC-CAT6J-YL (Yellow)

CAT-5E 90-Degree UTP 90-Degree. T568A/B, 110 IDC



BULK PACK

**25/PACK
CAT-5E**



SC-CAT5J (White)



SC-CAT5J-GN (Green)



SC-CAT5J-25
(White)



SC-CAT5J-BK (Black)



SC-CAT5J-RD (Red)



SC-CAT5J-BL-25
(Blue)



SC-CAT5J-BL (Blue)



SC-CAT5J-YL (Yellow)

Keystone, Snap-In Module

CAT-6
180-Degree

UTP 180-Degree.



SC-CAT6 (White)
SC-CAT6-BL (Blue)
SC-CAT6-BK (Black)

CAT-6A
Tool-Free

Cat-6A UTP RJ45, 0.5U, ETL Verified



SC-CAT6A
(White)



SC-CAT6A-BL
(Blue)

Shielded
CAT-6A

(Silver, Shielded)



SC-CAT6A-SH



RCA Bulkhead
SC-KRCA-W
(White)



RCA Bulkhead
SC-KRCA-RD
(Red)



RCA Bulkhead
SC-KRCA-YL
(Yellow)



RCA Bulkhead
SC-KRCA-GN
(Green)



RCA Bulkhead
SC-KRCA-BL
(Blue)



Speaker Binding Post
SC-KBP-R (Red)



Speaker Binding Post
SC-KBP-BK (Black)



RCA to "F" Bulkhead
SC-KRF-FF-WH (White)



RCA to "F" Bulkhead
SC-KRF-FF-R (Red)



Blank Insert
SC-KBK (White)
SC-KBK-BK (Black)



HDMI Coupler
SC-KHDMI (White)
SC-KHDMI-BK (Black)



Cat 6 Coupler
SC-KCAT6C

BULK PACK

25/PACK
F-81



F81 Connector
SC-KFF (White)
SC-KFF-BK (Black)



F81 3GHz Connector
SC-KFF-3GHZ



F81 Connector
SC-KFF-25

Decora Style Wall Plate



Wall Plate 1 Port
Insert and Plate. 2-Piece
SC-DJ1 (White) SC-DJ1-BK (Black)



Wall Plate 2 Ports
Insert and Plate. 2-Piece
SC-DJ2 (White) SC-DJ2-BK (Black)



Wall Plate 3 Ports
Insert and Plate. 2-Piece
SC-DJ3 (White)



Wall Plate 4 Ports
Insert and Plate. 2-Piece
SC-DJ4 (White) SC-DJ4-BK (Black)



Wall Plate 6 Ports
Insert and Plate. 2-Piece
SC-DJ6 (White)



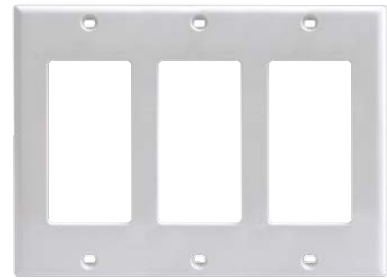
Wall Plate Blank Insert
SC-DJX (White) SC-DJX-BK (Black)



Wall Plate 1 Gang
SC-DWP1 (White) SC-DWP1-BK (Black)



Wall Plate 2 Gang
SC-DWP2 (White)



Wall Plate 3 Gang
SC-DWP3 (White)

BULK PACK

25/BOX



Wall Plate 1 Port
SC-DJ1-25



Wall Plate 2 Port
SC-DJ2-25

NEW

Contractor Series Keystone Jacks & Modules



HDMI Coupler
SC-KHDMI-CS



Cat 6 Coupler
SC-KCAT6C-CS



Single Gang Decora Plate
SC-DWP-CS-10 (White)

Port Decora Insert Plate - (10 pcs Bag) **10/PACK**



1 Port Decora Insert Plate
SC-IP1-CS-10



2 Port Decora Insert Plate
SC-IP2-CS-10



3 Port Decora Insert Plate
SC-IP3-CS-10



4 Port Decora Insert Plate
SC-IP4-CS-10

Cat 5e Keystone Jack - (10 pcs Bag) **10/PACK**



Cat 5e Keystone Jack
SC-CAT5J-CS-10 (White)



Cat 5e Keystone Jack
SC-CAT5J-BL-CS-10 (Blue)



Cat 5e Keystone Jack
SC-CAT5J-BK-CS-10 (Black)

Cat 6 Keystone Jack - (10 pcs Bag) **10/PACK**



Cat 6 Keystone Jack
SC-CAT6J-CS-10 (White)



Cat 6 Keystone Jack
SC-CAT6J-BL-CS-10 (Blue)



Cat 6 Keystone Jack
SC-CAT6J-BK-CS-10 (Black)

Wall Plate



Coaxial Wall Plate F81
SC-WCP-1WH



Coaxial Decora Wall Plate F81
SC-WCP-6WH



Coaxial Decora Wall Plate Gold-plated F81
SC-WCP6WG



Dual Purpose Wall Plate Tele Jack & F81
SC-WCP5



Combo Decora Wall Plate Tele Jack & Gold-plated F81
SC-WCP8WG



Flush Mount Decora Wall Jack 4 Pin
SC-PH127-4-1



Flush Wall Jack 4c
SC-PH109-4W-1 (White)



Blank Wall Plate
SC-2XWH (White)
SC-2XBK (Black)



Modular Telecom Surface Jack
SC-PH119-4-1



Single Brush Decora Wall Plate Insert and Plate. 2-Piece
SC-224 (White)
SC-224-BK (Black)



Dual Brush Decora Wall Plate Insert and Plate. 2-Piece
SC-225 (White)
SC-225-BK (Black)



Single Surface Mount Box for Keystone Jacks
SC-501



Dual Surface Mount Box for Keystone Jacks
SC-502



1Gang Flush to Inner Surface Bulk Wire
SC-WCP220



1Gang Flush to Outer Surface Bulk Wire
SC-WCP222



Double Gang Flush to Inner Surface Bulk Wire
SC-WCP221



Double Gang Flush to Outer Surface Bulk Wire
SC-WCP223

Connectors

F-Type Connectors (50 pcs Jar)

50/JAR



F-Type RG6 Crimp-On Connector Male
SC-F56AL-1



F-Type Snap Lock Connector for RG6U
SC-F56SNS-1



F-Type Snap Lock Connector for QUAD Shield RG6U
SC-F56QSNS-1



F-Type Twist On Connector for RG6U
SC-F56TW-1



Female Splice with Nut & Washer
SC-F81NW



Female Splice with Nut & Washer 2.4Ghz
SC-F81NW-2-4GHZ



Female Splice with Nut & Washer 3Ghz
SC-F81NW-3GHZ

Pass Through RJ45 Connectors (100 pcs Jar) Steel Cable Clamps (100 pcs Jar)

100/JAR



Pass Through RJ45 Cat-6 Crimp Plugs
SC-RJ45C6PT



Pass Through RJ45 Cat-5E Crimp Plugs
SC-RJ45PT



for Telephone Wire
SC-CC1



for RG6 & RG59
SC-CC2

Modular Data Connectors (100 pcs Jar)

100/JAR



Modular Plug for Round Cable 4P4C
SC-PH114-4R



Modular Plug for Round Cable 6P6C
SC-PH114-6R



Modular Plug for Round Cable 6P8C
SC-PH114-8R



Modular Plug for Cat-5E Round Stranded 8P8C
SC-PH114L5-8R



Modular Plug for Cat-5E Round Solid 8P8C
SC-PH114L5-8RS



Modular Plug for Cat-5E Round Solid Shield 8P8C
SC-PH114L5-8RS-SH



Modular Plug for Cat-6 Round Solid 8P8C
SC-PH114L6-8RS

Tools

Keystone Jack Termination Tool

Terminate both Cat-5E and Cat-6 Keystone jacks and cut all excess wires in one step.



90-degree jack only SC-TERM1

Pass through RJ45 Termination Tool

Works with both Cat-5E and Cat-6 RJ45 Crimp Plugs



SC-TERM2

Termination Tool for Contractor Series Keystone Jacks



SC-TERM3

Crimping Tool for Coaxial Cable for RG58 RG59 RG62 RG6 & Provo 5992



SC-CTR4

Cutter/Stripper with Slot Control



\$6⁵⁰ ea.
SC-STR1

B Wire Crimp Connector (100 pcs Jar) **100/JAR**



Gel-Filled



for 19-26 AWG
SC-T875L-100

for 19-26 AWG (Gel-Filled)
SC-T876-100

IR Repeater

SC-IR-STH550 USB Powered Wireless IR Repeater Dongle



- Can work both as IR repeater and wireless IR extender
- Radio frequency (RF): 915MHz
- RF operating distance: up to 100 meters line of sight.
- IR carrier frequency: 20KHz – 60KHz
- Compliant with CE/FCC EMC regulation
- High IR sensitivity (-90dBm).
- Bi-directional full band IR control
- Channel pairing.

SC-IR-STH600V2 4 Port IR Repeater Kit

NEW



The 4-port IR repeater kit extends the distance of the IR remote controls allowing to control up to 4 IR-equipped components

Includes

- 2 x dual-head IR emitters
- 1 x IR target
- 1 x 5V DC 500mA adapter

SC-IR-STH700 2 Port IR Repeater Kit



The 2-Port IR repeater kit extends the distance of the IR remote controls allowing to control up to 2 IR-equipped components

Includes

- 1 x 2-port IR hub
- 1 x IR receiver
- 2 x IR emitters
- 1 x DC adapter

SC-IR-STH800 6 Port IR Repeater Kit



The 6-Port IR repeater kit extends the distance of the IR remote controls allowing to control up to 6 IR-equipped components.

Includes

- 1 x IR connection block
- 1 x IR receiver
- 3 x dual-head IR emitters
- 1 x IR receiver
- In-Wall IR receiver
- 1 x DC adapter

SC-IR-STH900 Wireless IR Repeater



- Works with any home entertainment system supporting IR remote control
- Extends IR distance to up to 200M (line of sight)
- No additional wiring required

Includes

- 1 x wireless IR receiver
- 1 x wireless IR emitter
- 1 x external IR emitter with cable
- 1 x DC adapter

HDMI Splitter

SSAV-1X2HDMI 1x2 HDMI Splitter



- Distributes 1 HDMI source to 2 HDMI displays
- Supports resolution up to 4K UHD
- Supports HDR
- Supports EDID function
- Plug and play

4K UHD **HDR**
High-Dynamic Range

SSAV-1X4HDMI 1x4 HDMI Splitter



- Distributes 1 HDMI source to 4 HDMI displays
- Supports resolution up to 4K UHD
- Supports HDR
- Supports EDID function
- Plug and play

4K UHD **HDR**
High-Dynamic Range

SSAV-1X8HDMI 1x8 HDMI Splitter



- Distributes 1 HDMI source to 8 HDMI displays
- Supports resolution up to 4K UHD
- Supports HDR
- Supports EDID function
- Plug and play

4K UHD **HDR**
High-Dynamic Range

SSAV-3X1HDMI 3x1 HDMI Switch



- Switch easily between any 3 HDMI sources
- Supports resolution up to 4K UHD
- Supports highest bandwidth up to 18Gpbs
- Supports IR control and RS232 control
- Plug and play, remote included

4K UHD **HDR**
High-Dynamic Range

HDMI Extender

SSAV-EX1-5-6 HDMI Extender over CAT5e/6 with IR



- Includes a transmitter unit (TX) and a receiver unit (RX), working as a pair
- Transmits 1080p signal up to 100 meters with CAT5e cable; up to 130 meters with CAT6 or higher cable
- IR remote supports 20-60Khz
- Dimensions (LxWxH): 69.57mm x 58.80mm x 16.10mm

up to **130M** TX»RX

SSAV-EX1PO-V2 HDMI Extender over CAT6 with IR and PoE



POE

- Includes a transmitter unit (TX) and a receiver unit (RX), working as a pair
- Work as a HDMI splitter
- Transmit 1080p signal up to 50 meters with CAT6 or higher cable
- IR remote supports 20-60Khz
- Supports POE to power the receiver

up to **50M** TX»RX

SSAV-EX1 HDMI Extender over CAT6 with IR



- Includes a transmitter unit (TX) and a receiver unit (RX), working as a pair
- Transmit 1080p signal up to 50 meters with CAT6 or higher cable
- IR remote supports 20-60Khz
- Dimensions (LxWxH): 71.6mm x 66.6mm x 24.8mm

up to **50M** TX»RX

HDMI Extender

SSAV-EX22-BD-L 4K HDMI Extender over CAT6/6A/7 with IR

NEW



- Includes a transmitter unit (TX) and a receiver unit (RX), working as a pair
- Zero latency
- Transmitter support one HDMI loop-out
- Transmits 4K@60Hz signal up to 70 meters with CAT6 or higher cable
- Audio Extraction
- IR remote supports 20-60Khz
- Dimensions (LxWxH): 106mm x 99mm x 26.2mm

up to **70M** | **4K 60Hz** TX»RX **HDCP 2.2**

SSAV-EX22KVM 4K KVM Extender HDMI 2.0 over Cat6

NEW



- Includes a transmitter unit (TX) and a receiver unit (RX), working as a pair
- Transmits 18 Gbps signal
- Transmits 4K/60Hz signal up to 70 meters with CAT6
- Conforms to HDCP 2.2
- Audio Extraction
- Support KVM (Keyboard, Video & Mouse) function
- Dimensions (LxWxH): 150mm x 107mm x 28.4mm

KVM
up to **70M** | **4K 60Hz** TX»RX **HDCP 2.2**





BNC Connectors 10/PACK

PL259 UHF
Male Connector
for RG8/RG11/RG213/
RG214



CY-V350

"T" Adaptor BNC
Male to 2 BNC
Females



CY-V324

BNC Female to
BNC Female



CY-V315

BNC Male to
F Type Female



CY-V309

BNC Male to RCA
Phono Female



CY-V308

F Male to BNC
Female



CY-V305

BNC Crimp-On Plug
for PLENUM RG6 with
2 gold crimp pins



CY-V301BPL

BNC Crimp-On Plug
for PLENUM RG59/RG62
with 2 gold crimp pins



CY-V301PL

BNC Male 2pc.
Quick Crimp
for RG6U



CY-V301QB-1

BNC Male 2pc.
Quick Crimp
for RG59U & RG62



CY-V301Q-1

BNC Crimp-on Plug
for RG6U with
2 gold crimp pins



CY-V301B-1

BNC Crimp type Plug
for RG59 & RG62 with
2 gold crimp pins



CY-V301-1

BNC Plug Twist-On
Hexagonal RG59 & RG-62



CY-V299H-1

BNC Plug Twist-On
RG6U



CY-V299B

BNC Plug Twist-On
RG59 & RG62



CY-V299

Hinged Wall Equipment Rack

19" standard installation, easy operation and maintaining at the back, double section welded frame structure. Tempered glass front door with wider than 180 degrees turning angle, removable side panels for easy access, easy operation and maintaining at the back, fully assembled



SSYS-WM01-06

6U Locking Glass Door

- 600x550x6U
- Weight: 38.5 lbs (17.5kg)
- 14.57" x 23¾" x 21¾" (HxWxD)



SSYS-WM01-09

9U Locking Glass Door

- 600x550x9U
- Weight: 53 lbs (24kg)
- 19¾" x 23¾" x 21¾" (HxWxD)



SSYS-WM01-12

12U Locking Glass Door

- 600x550x12U
- Weight: 57.32 lbs (26kg)
- 25" x 23¾" x 21¾" (HxWxD)

AV Rack Cabinet

Includes locking glass front-door, locking rear door, removable side panels, shelves, blanks, 2" casters and levelling feet, 2 top-mounted DC fans, SPCC cold rolled steel with black powder coat finish, 880lbs (400kg) weight capacity, fully assembled



SSYS-RACK-21

21U AV Rack Cabinet

- 3x 2U-16" shelves
- 3x 2U blank panels
- 40.2" x 23.6" x 23.6" (HxWxD)
- Weight: 122.44 lbs (51kg)



SSYS-RACK-27

27U AV Rack Cabinet

- 4x 2U-16" shelves
- 1 x 2U-18" shelves
- 5 x 2U blank panels
- 50.6" x 23.6" x 23.6" (HxWxD)
- Weight: 144.40 lbs (65.5kg)



SSYS-RACK-36

36U AV Rack Cabinet

- 5 x 2U-16" shelves
- 1 x 2U-18" shelves
- 1 x 3U-20" shelves
- 6 x 2U blank panels + 1 x 3U blank Panel
- 66.5" x 23.6" x 23.6" (HxWxD)
- Weight: 190.70 lbs (86.5kg)



SSYS-RACK-42

42U AV Rack Cabinet

- 5 x 2U-16" shelves
- 2 x 2U-18" shelves
- 2 x 3U-20" shelves
- 7 x 2U blank panels + 2 x 3U blank panels
- 77" x 23.6" x 23.6" (HxWxD)
- Weight: 226 lbs (102.5kg)



SSYS-WM01-15

15U Locking Glass Door

- 600x550x15U
- Weight: 67.24 lbs (30.5kg)
- 30⁵/₁₆" x 23³/₄" x 21³/₄" (HxWxD)



SSYS-WM01-18

18U Locking Glass Door

- 600x550x18U
- Weight: 71.65 lbs (32.5kg)
- 35.43" x 23³/₄" x 21³/₄" (HxWxD)

Server Cabinet with Mesh Doors

Includes locking front and rear steel mesh doors, removable side panels with locks, 2.5" casters and levelling feet, 4 top-mounted DC fans, all steel construction, SPCC cold rolled steel with black powder coat finish, 2866lbs (1300kg) weight capacity, fully assembled



SSYS-RACK-24-SV

24U Server Cabinet with **Mesh** Doors

50" x 23⁵/₈" x 39³/₈" (HxWxD)

- Weight: 187lbs (85kg)



SSYS-RACK-42-SV

42U Server Cabinet with **Mesh** Doors

81⁹/₁₆" x 23⁵/₈" x 39³/₈" (HxWxD)

- Weight: 253.5lbs (115kg)

Open Frame Rack

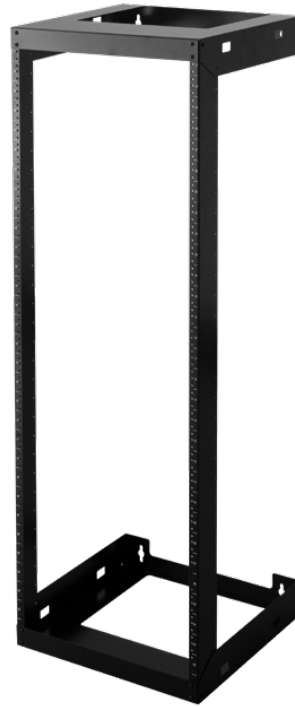
19" standard installation, 18" deep open frame design allows easy access to your equipment and cables without obstruction, the rails are threaded and numbered, modular design, easily assemble and disassemble for delivery, screw pack included



SSYS-WMOF-01-15

15U Wall Mount

- 500x457x15U
- Weight: 18.75 lbs (8.5kg)
- Weight capacity: 220.5lbs (100kg)



SSYS-WMOF-01-30

30U Wall Mount

- 500x457x30U
- Weight: 40.8 lbs (18.5kg)
- Weight capacity: 220.5lbs (100kg)

Headend Equipment Rack

Various optional accessories according to requirements. Modular design, SPCC cold rolled steel with black powder coat finish, easily assemble and disassemble for delivery



SSYS-148

27U Headend Equipment Rack

- 560x405x27U
- Weight: 29.7lbs (13.5kg)
- Weight capacity: 330lbs (150kg)
- 54" x 22" x 16" (HxWxD)



SSYS-1

45U Headend Equipment Rack

- 560x405x45U
- Weight: 39.6lbs (18kg)
- Weight capacity: 330lbs (150kg)
- 85" x 22" x 16" (HxWxD)

Adjustable Wall Mount Rack

19" standard installation, the adjustable hinge gives you the flexibility to set the depth from 12" to 18", Mounting holes on the back, easily assemble and disassemble for delivery, hardware included



SSYS-RU1

1U Wall Mount

- Dual stud
- W20.5" x H2.027" x D12-18"
- **Expandable to 18"**
- 2mm Metal Thickness



SSYS-RU2

2U Wall Mount

- Dual stud
- W20.5" x H3.77" x D12-18"
- **Expandable to 18"**
- 2mm Metal Thickness



SSYS-RU4

4U Wall Mount

- Dual stud
- W20.5" x H7.27" x D12-18"
- **Expandable to 18"**
- 2mm Metal Thickness



SSYS-RU8

8U Wall Mount

- Dual stud
- W20.5" x H14.25" x D12-18"
- **Expandable to 18"**
- 2mm Metal Thickness

SSYS-CF-02

Cooling Fan for Wall Mount Racks –
2 Fans + Power Cable



- 120mm x120mm x 38mm
- 110V high-performance fans (50 CFM each)
- 24.9 dB sound rating (each)
- Oiliness axletree
- 6-foot AC input cord with NEMA plug

SSYS-CF-04-1U

Cooling Fan for Racks 4-Fans 1U

- Compatible with 19" rack
- 6-foot AC input cord with NEMA plug



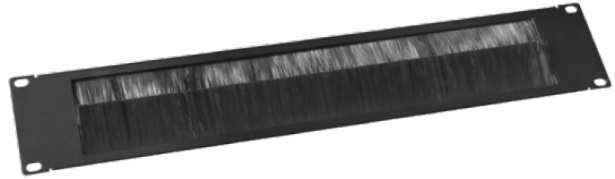
Shelves & Accessories

Universal Blank Panel



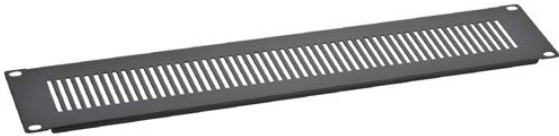
1U SSYS-1B 2U SSYS-2B 4U SSYS-4B

Brush Plate Cable Management Blank Panel



1U SSYS-1BP 2U SSYS-2BP

Vented Front Panel



1U SSYS-1VP 2U SSYS-2VP 3U SSYS-3VP

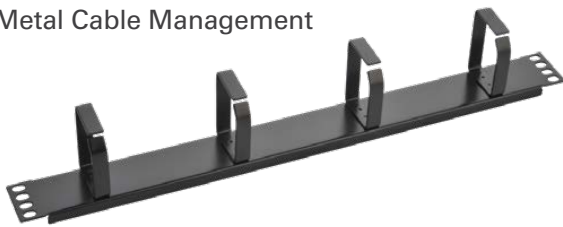
SSYS-1LB

Offset Lacing Bar for 19" Racks



SSYS-DRCM1

1U Metal Cable Management



SSYS-S1FV

Universal Rack Shelf-Fixed



SSYS-S1V

Universal Rack Shelf-Vented
1U-12"



SSYS-S1UV

Universal Rack Shelf-Vented
1U-14"



SSYS-S2U

Universal Rack Shelf
2U-14"



SSYS-S2UV

Universal Rack Shelf-Vented
2U-14"



SSYS-S2CM

Universal Rack Shelf-Centre Mount-Vented
2U-19"



SSYS-SS1U

Universal 1U Sliding Shelf
14" Deep



SSYS-DRW2

Locking Drawer, 2U-18"



SSYS-02LB-2PK

"L" Shape Lacing Bar, 2 Pack



SSYS-LIGHT01

Cabinet Light LED 6w 400 Lumens



SSYS-1032-50

Screws for AV Racks
#10-32 x 3/4" (50-Pack)



SSYS-LOCK

ø19x16.5mm
Side Panel Lock Kit



SSYS-CASTERS

2" Casters for Racks
(4-Pack)



SSYS-PD8-FPL-1U

8 Outlet Power Distribution Unit 1U

- Compatible with 19" rack
- **Full surge & lightning protection**
- 8 Outlet 15A
- 6 ft. cord



SSYS-PD8-1U

8 Outlet Power Distribution Unit 1U

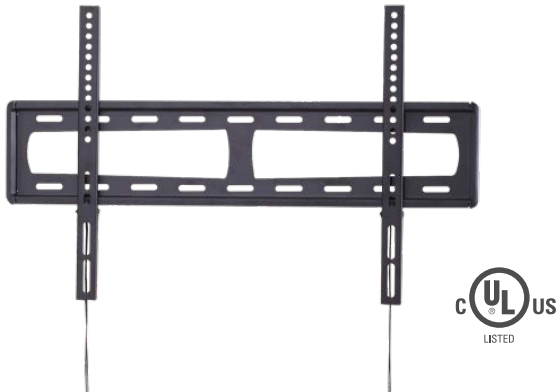
- Compatible with 19" rack
- 8 Outlet 15A
- 6 ft. cord



TV Wall Mount

Quick-release mounting brackets allow easy cable connection,
Lateral adjustment allows precise installation, All popular hardware is included

Low Profile TV Wall Mounts



SM-3270F 32" - 70"

- Fits most 32" to 70" flat panel TV
- Supports flat panel TV up to 88lbs (40kg)
- Dimensions (WxDxH): 692mm x 22mm x 430mm
- Fits standard VESA mounting pattern (WxH)mm
600x400 400x400 400x200 200x200 100x100 50x50

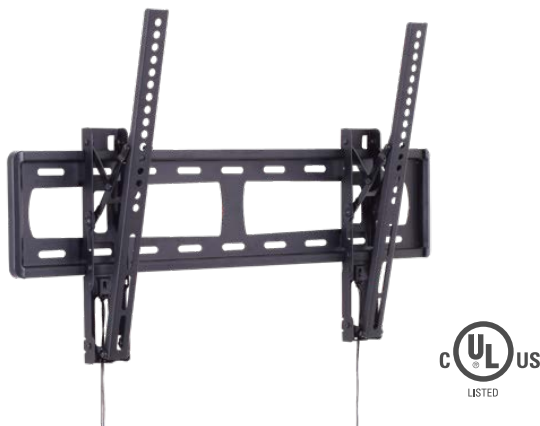


SM-4790F 47" - 90"

- Fits most 47" to 90" flat panel TV
- Supports flat panel TV up to 132lbs (60kg)
- Dimensions (WxDxH): 912mm x 22mm x 630mm
- Fits standard VESA mounting pattern (WxH)mm
800x600 600x400 600x300 600x200



Low Profile Tilt TV Wall Mounts



SM-3270T 32" - 70"

- Fits most 32" to 70" flat panel TV
- Supports flat panel TV up to 88lbs (40kg)
- Dimensions (WxDxH): 692mm x 35mm x 430mm
- Fits standard VESA mounting pattern (WxH)mm
600x400 400x400 400x200 200x200 100x100



SM-4790T 47" - 90"

- Fits most 47" to 90" flat panel TV
- Supports flat panel TV up to 132lbs (60kg)
- Dimensions (WxDxH): 912mm x 26mm x 630mm
- Fits standard VESA mounting pattern (WxH)mm
800x600 600x400 600x300 600x200



Full-Motion Articulating TV Wall Mounts



SM-3265FM 32" - 65"

- Dual stud
- Fits most 32" to 65" flat panel TV
- Single stud mount
- Supports flat panel TV up to 66lbs (30kg)
- Extended solid aluminum arm offers wide-angle optimum viewing position
- Dimensions (WxDxH): 513mm x 56-465mm x 420mm
- Fits standard VESA mounting pattern (WxH)mm
400x400 400x200 200x200 100x100



VESA up to
600x400mm



Supports up to
68 lbs (30kg)



Fits most TV
from 32" - 65"



Slim Profile
2 1/2" - 18 5/16"
(56-465mm)



Easy Tilting



SM-4270DFM 42" - 70"

- Dual stud
- Fits most 42" to 70" flat panel TV
- Supports flat panel TV up to 99lbs (45kg)
- Extended solid aluminum arm offers wide-angle optimum viewing position
- Dimensions (WxDxH): 660mm x 56-465mm x 420mm
- Fits standard VESA mounting pattern (WxH)mm
600x400 100x100



VESA up to
600x400mm



Supports up to
99 lbs (45kg)



Fits most TV
from 42" - 70"



Slim Profile
2" - 18 5/16"
(50-465mm)



Easy Tilting



SM-4790DFM 47" - 90"

- Fits most 47" to 90" flat panel TV
- Supports flat panel TV up to 132lbs (60kg)
- Extended solid aluminum arm offers wide-angle optimum viewing position
- Dimensions (WxDxH): 912mm x 55-450mm x 630mm
- Fits standard VESA mounting pattern (WxH)mm
800x600 600x400 300x200



VESA up to
800x600mm



Supports up to
132 lbs (60kg)



Fits most TV
from 47" - 90"



Slim Profile
2 5/32" - 17 3/4"
(56-450mm)



Easy Tilting

In-Ceiling Speaker

With adjustable tweeter and paintable magnetic grill.

SS-ICS-5

In-Ceiling Speaker
5.25" Woofer + 0.5" Tweeter



5 1/4" 8Ω 60 watts

- 5.25" woofer + 0.5" tweeter
- 60 – 20,000 Hz frequency response
- Sensitivity (1m, 1W): 88dB
- Speaker dimension: 204mm x 92mm (Ø x H)
- Cut-out dimension: Ø 178mm
- Thin-bezel rimless grill held by neo magnets

SS-ICS-6

In-Ceiling Speaker
6.5" Woofer + 0.5" Tweeter



6 1/2" 8Ω 70 watts

- 6.5" woofer + 0.5" tweeter
- 50 – 20,000 Hz frequency response
- Sensitivity (1m, 1W): 89dB
- Speaker dimension: 232mm x 92mm (Ø x H)
- Cut-out dimension: Ø 200mm
- Thin-bezel rimless grill held by neo magnets

SS-ICS-6-5KV

In-Ceiling Speaker
6.5" **Kevlar** Woofer + 1" Tweeter



6 1/2" 8Ω 100 watts

- 6.5" Kevlar woofer + 1" tweeter
- 50 – 20,000 Hz frequency response
- Sensitivity (1m, 1W): 89dB
- Speaker dimension: 232mm x 92mm (Ø x H)
- Cut-out dimension: Ø 200mm
- Thin-bezel rimless grill held by neo magnets

SS-ICS6-DVC

In-Ceiling Dual Voice Coil Speaker
6.5" Woofer + 2 x 0.5" Tweeter



6 1/2" 8Ω 80 watts

- 6.5" woofer + 2 x 0.5" tweeter
- 40 – 20,000 Hz frequency response
- Sensitivity (1m, 1W): 89dB
- Speaker dimension: 232mm x 92mm (Ø x H)
- Cut-out dimension: Ø 200mm
- Thin-bezel rimless grill held by neo magnets

SS-ICS-8

In-Ceiling Speaker
8" Woofer + 0.5" Tweeter



8" 8Ω 90 watts

- 8" woofer + 0.5" tweeter
- 35 – 20,000 Hz frequency response
- Sensitivity (1m, 1W): 90dB
- Speaker dimension: 282mm x 105mm (Ø x H)
- Cut-out dimension: Ø 248mm
- Thin-bezel rimless grill held by neo magnets

SS-ICS-6E

In-Ceiling Speaker
6.5" Woofer + 0.5" Tweeter



6½" 8Ω 80 watts

- 6.5" woofer + 0.5" tweeter
- 40 – 20,000 Hz frequency response
- Sensitivity (1m, 1W): 89dB
- Speaker dimension: 232mm x 198mm (Ø x H)
- Cut-out dimension: Ø 200mm
- Thin-bezel rimless grill held by neo magnets

SS-IWS-6S

Thin Bezel, Rimless Grill In-Wall Speaker
6.5" **Kevlar** Woofer + 1" Tweeter



6½" 8Ω 100 watts

- 6.5" Kevlar woofer + 1" tweeter
- Frequency response: 45 – 20,000 Hz
- Sensitivity: 88dB
- Speaker dimension: 306mm x 219mm x 85mm (HxWxD)
- Cut-out dimension: 278mm x 190 mm (HxW)

In-Ceiling Speaker Bracket

The SS-ICB is a pre-construction kit that can be easily attached to any joist or stud with virtually no rise in drywall depth.

*Must be installed before the drywall.



SS-ICB-5
for 5" Speakers
Ø 178mm

SS-ICB-6
for 6" Speakers
Ø 200mm

SS-ICB-8
for 8" Speakers
Ø 248mm

Subwoofers

SS-SUB-8P

8" High Performance
Powered Subwoofer



- Drivers: 8" reinforced
- 45Hz – 150Hz frequency response
- Adjustable from 50Hz – 150Hz lowpass crossover
- Amplifier and speaker input

SS-SUB-10P

10" High Performance
Powered Subwoofer

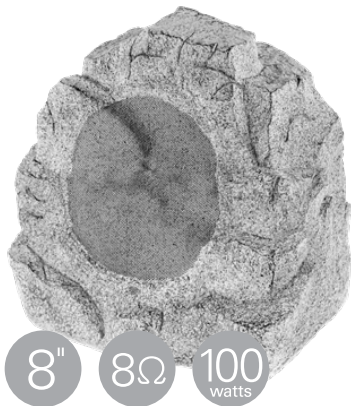


- Drivers: 10" reinforced
- 40Hz – 150Hz frequency response
- Adjustable from 50Hz – 150Hz lowpass crossover
- Amplifier and speaker input

Outdoor Speaker

SS-ROCK8-2GY (Grey)

Weatherproof Rock Speakers
8" Woofer + 0.5" Tweeter



- Drivers: 8" woofer + 0.5" tweeter
- Frequency response: 35 – 20,000 Hz
- Sensitivity: 88dB
- Speaker dimension:
340mm x 295mm x 290mm (HxWxD)

SS-MC60-BK (Black)

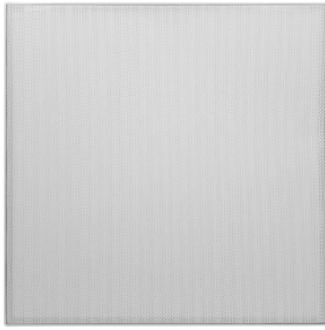
Indoor/Outdoor Speaker
6.5" Woofer + 1" Tweeter



- Drivers: 6.5" woofer + 1" tweeter
- Frequency response: 50 – 20,000 Hz
- Sensitivity: 90dB
- Speaker dimension: 302mm x 196mm x 193mm (HxWxD)

SS-SQ6-GR

Square Replacement Grills for 6" In-Ceiling Speakers



SS-VC75I-S-W

Impedance Matching
75w Slider
Volume Control
– White



SS-DA-AN-02

Digital Audio to Stereo Audio Converter with Loopout Function



Digital To Analog (DAC):

- Coaxial or optical digital input, with coaxial taking priority
- Dual analog L/R output (RCA)
- Digital input: coaxial & optical
- Supported LPCM digital audio format
- Input impedance: 75 ohm
- Minimum load impedance: 10K ohm
- Sampling rate: 32 KHz – 192 KHz
- DC input voltage/polarity: 12V / center positive
- Dimensions (LxWxH): 88.4mm x 64.5mm x 29mm

SS-STPA-01

Stereo Class D Audio Amplifier with IR Remote Control



- Manual or remote volume control
- Standby (red) / ON (green) indicator
- Screw terminals for 24-12 gauge wire
- Speaker protection circuit
- Dimensions (WxDxH): 145mm x 97mm x 41mm

SSAV-EX3-5-2

3.5mm Stereo Audio CAT-5 Extender



- Extend audio signal up to 75M (250 ft) using CAT-5, 5e or 6 network cable.
- Set of 2 audio baluns – transmitter x1 and receiver x1
- For analog stereo audio
- Bi-directional so each end can either transmit or receive
- Plug and play

SSAV-EXRCA-2

RCA Stereo Audio CAT-5 Extender



- Extend audio signal up to 75M (250 ft) using CAT-5, 5e or 6 network cable.
- Set of 2 audio baluns – transmitter x1 and receiver x1
- For analog stereo audio
- Bi-directional so each end can either transmit or receive
- Plug and play

Speaker Selector

SS-S6-I

6 Zone low-profile speaker selector box



- Protection circuit high power resistors: 2 x 10 Ohm/15 Watt per channel
- Power handling with protection circuit
ON: 70 Watts/CH. OFF: 140 Watts/ch.
- Dimensions (WxDxH): 433mm x 112mm x 49mm

SS-S6VC-I

6 Zone dual source automatic impedance matching speaker selector with individual volume control



- A/B speaker selector
- Audio power handling: 100 Watts/Channel (peak)
- Frequency response: 20Hz – 20kHz
- Input Source: up to 2 amplifiers
- Dimensions (WxDxH): 430mm x 158mm x 64mm

SYNC-200 AC Line Conditioner

2100
JOULE RATING



- 2,100 Joule Rating
- 8 + 1 (front) Surge protected AC outlets
- 4 x Always-on, 4 x switched outlets
- 1 x High definition surge protected RF connection
- Includes: 1U Rack mounting kit & 8-ft. AC power cord
- Size: 17" x 8.75" x 2.125"

SYNC-400 AC Line Conditioner

3500
JOULE RATING



- 3,500 Joule Rating
- 8 x Surge protected AC outlets
- 4 x Always-on, 4 x switched outlets
- 2 x High definition surge protected RF connection
- 1 x High speed surge protected RJ45 connection
- 8-ft. AC power cord included
- Size: 17" x 8.75" x 2.125"

Indoor Extension Cords
2-Prong Plug



6FT

10FT

SP-EXT2-6WH SP-EXT2-10WH

- Polarized 2-prong plug
- 3-outlet connector
- Low profile cord
- Right angle plug for tight spaces
- SPT-2 AWG 16/2
- 13A / 125V / 1625W

3-Prong Plug



6FT

10FT

SP-EXT3-6WH SP-EXT3-10WH

- Polarized 3-prong plug
- 3-outlet connector
- Low profile cord
- Right angle plug for tight spaces
- SPT-2 AWG 16/3
- 13A / 125V / 1625W

6-Outlet Power Strip

- Built-in circuit breaker
- Lighted On/Off switch
- 3-foot cord
- Right angle plug
- Indoor use only
- Electrical rating: 15A / 125V / 1875W



○ SP-6PB-W (White)

● SP-6PB (Black)

3FT



400 & 750 Joules 6-Outlet Surge Protector

- **400 or 750 joules** surge protection
- Red LED indicator shows surge protection is functioning
- Built-in circuit breaker
- Lighted On/Off switch
- Right angle plug
- Indoor use only
- Electrical rating: 15A / 125V / 1875W
- **3 or 6-foot cord**



○ SP-6FS-400J-W (White)

● SP-6FS-400J (Black)

3FT 400J

6FT 750J

○ SP-6FS-750J-W (White)

● SP-6FS-750J (Black)



SP-6FSM-1000J

1150 Joules 6-Outlet **Metal** Surge Protector

6FT 1150J



- **1150 joules** surge protection
- Heavy-duty metal housing
- Red LED shows surge protection is functioning
- Green LED shows surge protector is properly grounded
- Lighted On/Off switch

- Built-in circuit breaker
- 6-foot cord
- Right angle plug
- 4 standard grounded outlets & 2 wide-spaced outlets for transformer-sized plugs
- Indoor use only
- Electrical rating: 15A / 125V / 1875W

Cable Ties

4" Cable Ties (100/ Pack)



5" Cable Ties (100/ Pack)



SC-TW4BK
Black
UV-resistant

SC-TW4
Natural

SC-TW5BK
Black
UV-resistant

SC-TW5
Natural

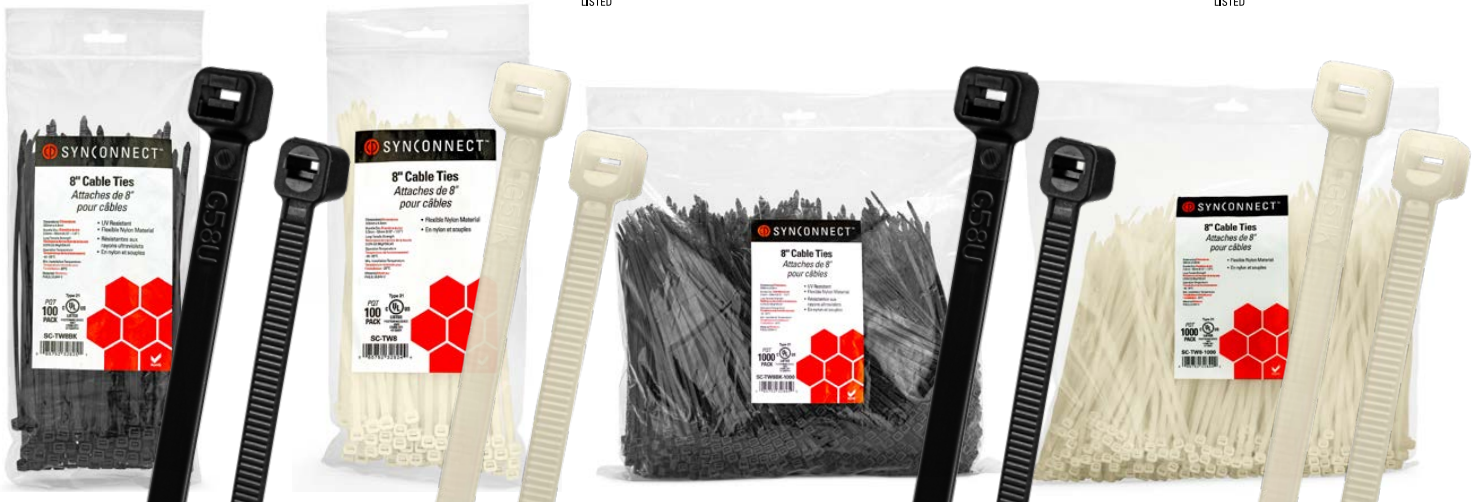
- Polyamide 6.6, UL94V-2, **18LB** tensile strength
- Length: 100mm (4"), Width: 2.5mm (0.1")
- Max. bundle Ø: 22mm(0.87")
- -40°C + 85°C
- c(UL) Verified

- Polyamide 6.6, UL94V-2, **18LB** tensile strength
- Length: 140mm (5.5"), Width: 2.5mm (0.1")
- Max. bundle Ø: 33mm(1.3")
- -40°C + 85°C
- c(UL) Verified

8" Cable Ties (100/ Pack)



8" Cable Ties **1000/PACK**



SC-TW8BK
Black
UV-resistant

SC-TW8
Natural

SC-TW8BK-1000
Black
UV-resistant

SC-TW8-1000
Natural

- Polyamide 6.6, UL94V-2, **50LB** tensile strength
- Length: 200mm (8"), Width: 4.8mm (0.19")
- Max. bundle Ø: 50mm(1.97")
- -40°C + 85°C
- c(UL) Verified

NEW

Cable Ties

11" Cable Ties (100/ Pack)



SC-TW11BK
Black
UV-resistant

SC-TW11
Natural

- Polyamide 6.6, UL94V-2, **50LB** tensile strength
- Length: 280mm (11"), Width: 4.8mm (0.19")
- Max. bundle Ø: 22mm(0.87")
- -40°C + 85°C
- c(UL) Verified

15" Cable Ties (100/ Pack)



SC-TW15BK
Black
UV-resistant

SC-TW15
Natural

- Polyamide 6.6, UL94V-2, **250LB** tensile strength
- Length: 380mm (15"), Width: 12.6mm (0.5")
- Max. bundle Ø: 106mm(4.17")
- -40°C + 85°C
- UL Recognized Component

5" Mounting Cable Ties (100/ Pack)



SC-TWO5BK
Black
UV-resistant

SC-TWO5
Natural

- Polyamide 6.6, UL94V-2, **40LB** tensile strength
- Built-in Mounting Hole Ø: 4.2mm(0.17")
- Length: 150mm (5.91"), Width: 3.6mm (0.14")
- Max. bundle Ø: 32mm(1.26")
- -40°C + 85°C

8" Mounting Cable Ties (100/ Pack)



SC-TWO8BK
Black
UV-resistant

SC-TWO8
Natural

- Polyamide 6.6, UL94V-2, **50LB** tensile strength
- Built-in Mounting Hole Ø: 5.2mm(0.20")
- Length: 200mm (7.87"), Width: 4.8mm (0.19")
- Max. bundle Ø: 47mm(1.85")
- -40°C + 85°C
- UL Recognized Component

NEW

Cable Ties (100/ Pack)

15" Mounting Cable Ties



SC-TWO15 Natural

- Polyamide 6.6, UL94V-2, **50LB** tensile strength
- Built-in Mounting Hole Ø: 5.2mm(0.20")
- Length: 380mm (14.96"), Width: 4.8mm (0.19")
- Max. bundle Ø: 102mm(4.02")
- -40°C + 85°C
- UL Recognized Component

8" Low Temp Cable Ties



SC-TW8LT Black UV-resistant

- Polyamide 6.6, UL94HB, **40LB** tensile strength
- Length: 200mm (8"), Width: 3.6mm(1.14")
- Max. bundle Ø: 53mm (2.09")
- -60°C + 85°C
- UV-resistant

Cable Cradle Mounts for Cable Tie



SC-CCM3 Natural

- **Mounting Hole Ø: 3.7mm(0.15")**
- Polyamide 6.6, UL94V-2,
- L x W x H: 0.59" x 0.37" x 0.28" / 14.9mm x 9.5mm x 7.2mm
- Max. Tie Width: 4.8mm (0.19")
- -40°C + 85°C

SC-CCM6 Natural

- **Mounting Hole Ø: 6.4mm(0.25")**
- Polyamide 6.6, UL94V-2,
- L x W x H: 0.86" x 0.63" x 0.38" / 21.9mm x 15.9mm x 9.7mm
- Max. Tie Width: 9.0mm (0.35")
- -40°C + 85°C

Self-Adhesive Cable Cradle Mounts for Cable Tie

3/4" x 3/4" Mounting Base



SC-TWA1BK Black

- Polyamide 6.6, UL94V-2
- Length: 19mm (0.75"), Width: 19mm (0.75")
- Mounting Hole Ø: 3.5mm(0.14")

SC-TWA1 Natural

- Max. Tie Width: 4mm (0.16")
- -40°C + 85°C

1 1/8" x 1 1/8" Mounting Base



SC-TWA2BK Black

- Polyamide 6.6, UL94V-2
- Length: 27.8mm (1.09"), Width: 27.8mm (1.09")
- Mounting Hole Ø: 5.7mm(0.22")

SC-TWA2 Natural

- Max. Tie Width: 5.3mm (0.21")
- -40°C + 85°C

NEW

Wire Connectors (100/ Pack)

Closed-End Crimp Solderless Terminals

- Compact design fits easily into tight locations
- Flared skirt ensures easy wire entry and protects against turned-back strands
- UL Listed for 300V maximum building wiring; temperature rated at 105°C
- UL approved 94V-2 Polyamide 6,6 Plastic body with copper tube



SC-T879
22-16 AWG

SC-T880
22-14 AWG

SC-T881
22-10 AWG

Twist-On Wire Connectors

- Five colour-coded models cover a full range of wire sizes from 22-10 AWG
- No pre-twisting required - positive grip design provides fast, easy installation that will not relax over time
- Tough, UL94V-2 flame-retardant shell rated at 105°C
- UL Listed to 486C and comply with Federal Specification W-S-610E
- Material: UL approved PP, steel spring



SC-T929
22-18 AWG
300V Rating

SC-T930
22-14 AWG
300V Rating

SC-T931
22-14 AWG
600V Rating

SC-T933
18-10 AWG
600V Rating

SC-T935
22-10 AWG
600V Rating

Ⓟ SYN(CABLE)™ Ⓟ SYN(CONNECT)™ Ⓟ SYN(SYSTEM)™ Ⓟ SYN(FIBER)™
Ⓟ SYN(MOUNT)™ Ⓟ SYN(SOUND)™ Ⓟ SYN(POWER)™ Ⓟ SYN(AV)™

Distributed in Canada by

PROVO  **LTD.
LTDÉE.**

620 Rowntree Dairy Rd.
Woodbridge, ON L4L 5T8
1-888-797-7686

401 Rue Locke
Saint Laurent, QC H4T 1X7
1-800-361-7349