

HIGHEST QUALITY



# Hose, Cord and Cable Reels

MANY OPTIONS AVAILABLE OR CALL FOR A CUSTOM!



- INDUSTRIAL
- AUTOMOTIVE
- FUEL DELIVERY
- AVIATION /  
GROUND SUPPORT
- SPRAYER / HYDROSEEDING
- TURF & IRRIGATION
- FIREFIGHTING
- SEWER / WELL CLEANING
- BOOM / CRANE
- CUSTOM REELS TO MEET  
YOUR SPECIFICATIONS



**SVI International, Inc.**

155 Harvestore Drive • DeKalb, IL

800-321-8173 • fax: 800-899-1784

[www.sviinternational.com](http://www.sviinternational.com)



# Why use hose reels?



Because they make hose handling more efficient and safer. Your hoses, cables and cords will last up to five times longer. You will improve hose management, which decreases labor costs. Your chances of injuries from tripping hazards will decrease, which saves lost work time, medical bills and higher insurance. You also save the expense and time to replace expensive hoses, cables and cords that get run over by fork lifts and other vehicles.

## OSHA says reduce your trips and falls

"There are many situations that may cause slips, trips and falls. The controls needed to prevent these hazards are usually obvious, but too often ignored, such as...coiling up extension cords, lines and hoses when not in use and keeping electrical and other wires out of the way." OSHA's "Fall Prevention Tips" include, "Practice good housekeeping. Keep cords, welding leads and air hoses out of walkways or adjacent work areas." Source: www.osha.gov

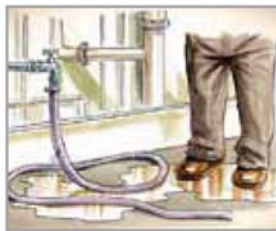
## Five reasons why hose reels add value



**IMPROVE  
EFFICIENCY**



**INCREASE  
SAFETY**



**MINIMIZE  
LEAKAGES**



**REDUCE  
HOSE WEAR**



**INCREASE  
PRODUCTIVITY**

- Water Hose Reels
- Air Hose Reels
- Electric Cord Reels
- Welding Reels
- Liquid Propane Reels
- Fuel Hose Reels
- Oil Hose Reels
- Grease Hose Reels
- Hydraulic Hose Reels
- Grounding Reels
- Stainless Steel Reels
- ...and many, many more!

## Custom Built Reels

Reelcraft's engineered products group custom builds reels to your specifications. The specially engineered products are developed for demanding applications in areas such as marine, military, aviation, hydroseeding, sewer and well cleaning, offshore oil rigs, robotic cable and much more. SVI is able to offer flexibility, competitive pricing and a lasting commitment to excellence. For more than 20 years, Reelcraft's engineered products group has produced custom products to meet individualized requirements. Call SVI to order a custom Reelcraft hose reel. 800-321-8173

## Built better to perform better.

To place an order, please advise:

1. Model number.
2. Product to be handled such as air, oil, water, etc.
3. Maximum operating pressure in P.S.I.
4. Maximum operating temperature in degrees Fahrenheit.
5. Hose inside and outside diameters and length.
6. Installation height, especially if more than 16 feet.
7. Desired guide arm position by adding one of the suffixes

to the model number.

Example: 5635 OLP SW for side wind.

Refer to the guide arm chart for guide arm suffix codes.

### Additional Considerations:

A flexible connection between the reel and the source of supply is required to prevent possible misalignment and binding. Nonflexible connections will void the warranty. The pressure rating of inlet hose must be equal or greater than the rating of the reel.

### Accessories

Reels ordered with hose and bumper are assembled complete and ready to install. Order bumpers separately for reels without hose.

### Additional questions?

Call SVI for assistance. 800-321-8173

# Reelcraft: Better by Design

Reelcraft's reels are better by design because of their lasting commitment to excellence. Reelcraft's engineering team is well-known for designing durable, high quality products. Standard features include durable, corrosion-resistant powder coat paint, multi-position guide arms for versatile mounting options and heavy-duty, reinforced steel stampings for increased strength. our reels are permanently factory-lubricated for a long, trouble-free service life. All of these features, and many more, add up to make "The Reelcraft Difference."

## REINFORCED STEEL

The steel-stamped guide arm is reinforced to reduce bending due to angular pull

## IMPROVED CONNECTION

The elongated brass connector and proprietary adhesion process provide a better crimp to the hose.

## STRESS-FREE SWIVEL

Reelcraft's full-flow design combines the highest grade seal design with supporting bearing surfaces to insure the longest possible life.

## CORROSION-RESISTANT

Steel components are individually powder coated to virtually eliminate corrosion.

## LONG SERVICE LIFE

Field-proven swivel assures long service life.

## KINKLESS HOSE

High quality PVC hose is specially blended for use on reels

## SEALED CONNECTION POINTS

Swivel and hose inlet connections seal against leaks.

## ADJUSTABLE GUIDE ARM

Multiple guide arm positions provide versatile uses and easier field adjustment.

## TROUBLE-FREE PERFORMANCE

Fewer components increase the service life of the reel and improve performance.

## LONG LIFE DRIVE SPRING

Drive mechanism is enclosed for protection against the environment. Declutching arbor virtually eliminates possibility of spring damage due to reverse winding of reel spool.

## ROBUST LATCH

Wide profile combined with special spring assures maximum service life.

## STRUCTURAL STRENGTH

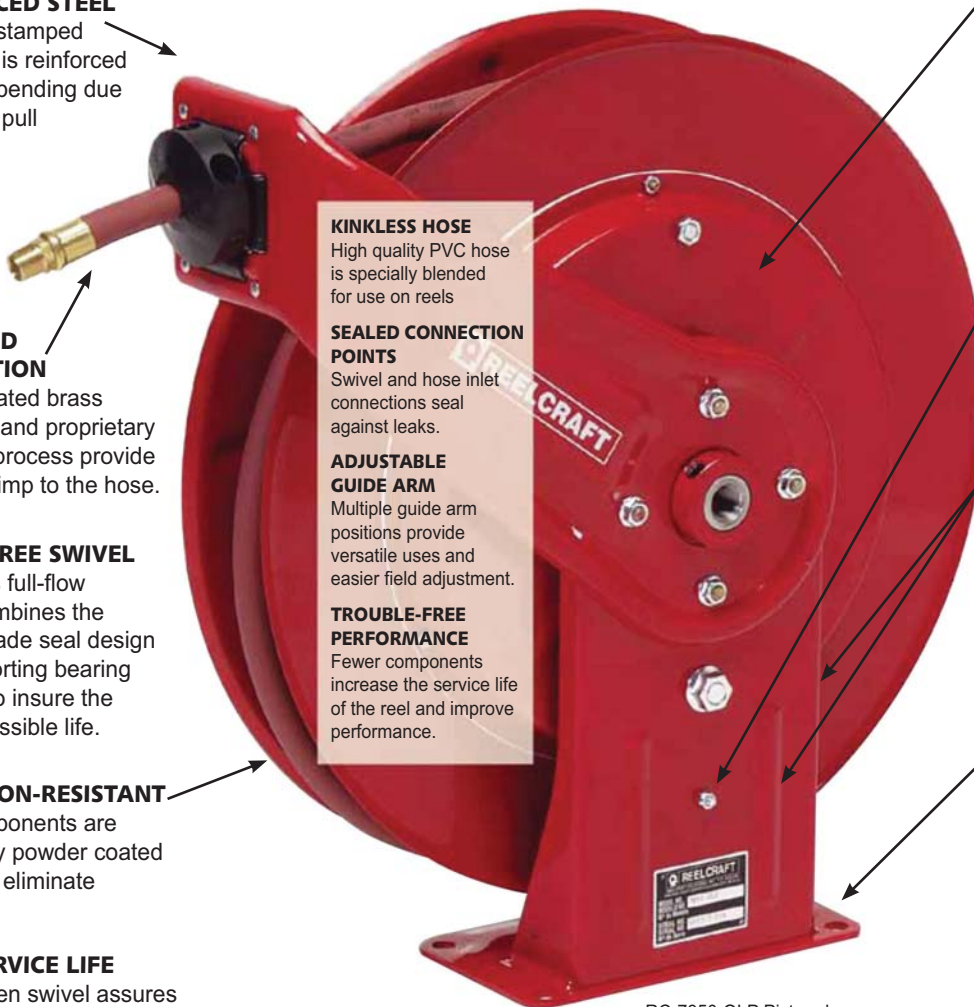
Welded heavy gauge steel frame includes dramatically flanged edges and stiffening ribs for lighter weight, yet stronger components for ease of handling and installation.

## EASY TO MOUNT

Attaches to most structurally sound surfaces. Edges are curved for safety.

## FINISH WITH QUALITY

Our components undergo a special five-stage cleaning process and are individually powder-coated for the highest quality paint adhesion. Excess powder is reclaimed to be environmentally friendly.



RC-7850-OLP Pictured

## Two-Year Limited Warranty

Reelcraft offers a two-year limited warranty. All reels manufactured by Reelcraft Industries, Inc. are warranted to be free of defects due to faulty material or workmanship for 24 months from date of shipment, except hose.

**EXCEPTION:** LD, LG, LH cord reels - 1 year warranty. Normal wear and tear is not considered a defect in material or workmanship.

**NOTE:** For complete warranty information, online warranty registration and return information, please visit [www.reelcraft.com](http://www.reelcraft.com).



### Series RT

## Medium Duty Spring Retractable Hose Reels

Spring Driven Air / Water / Oil / Grease - 1/4", 3/8", 1/2" I.D.

Reelcraft's Series RT is an economical choice for a medium duty, lighter-weight, spring retractable hose reel for applications that are less demanding, yet require a product that can withstand industrial and commercial use. The industrial-grade drive spring is protected from the environment in a polypropylene spool for longer service life. Guide arm adjusts to seven positions.

Model with Hose	Model without Hose	Hose ID (in)	Hose Length (ft)	Max PSI	(M)NPTF Hose Outlet (in)	(F)NPTF Reel Inlet (in)	DIMENSIONS (in)			Shipping Weight (lbs)
							Length	Width	Height	
<b>LOW PRESSURE AIR / WATER REELS</b>				MAXIMUM TEMPERATURE 150° F (65° C)						
RC-RT435-OLP	RC-RT403-OLP	1/4	35	300	1/4	3/8	16.5	5.75	17.88	21
RC-RT450-OLP	RC-RT405-OLP	1/4	50	300	1/4	3/8	16.5	5.75	17.88	24
RC-RT635-OLP	RC-RT603-OLP	3/8	35	300	1/4	3/8	16.5	5.75	17.88	21
RC-RT650-OLP	RC-RT605-OLP	3/8	50	300	1/4	1/2	16.5	6.25	17.88	27
RC-RT835-OLP	RC-RT803-OLP	1/2	35	300	1/2	1/2	16.5	6.25	17.88	27
RC-RT850-OLP	RC-RT805-OLP	1/2	50	300	1/2	1/2	16.5	7.75	17.88	37
<b>MEDIUM PRESSURE OIL REELS</b>				MAXIMUM TEMPERATURE 150° F (65° C)						
RC-RT635-OMP	RC-RT603-OMP	3/8	35	1000	3/8	3/8	16.5	5.75	17.88	30
RC-RT650-OMP	RC-RT605-OMP	3/8	50	1000	3/8	1/2	16.5	7.75	17.88	35
RC-RT835-OMP	RC-RT803-OMP	1/2	35	1000	1/2	1/2	16.5	6.25	17.88	32
<b>HIGH PRESSURE GREASE REELS</b>				MAXIMUM TEMPERATURE 150° F (65° C)						
RC-RT435-OHP	RC-RT403-OHP	1/4	35	5000	1/4	3/8	16.5	5.75	17.88	30
RC-RT635-OHP	RC-RT603-OHP	3/8	35	4800	3/8	1/2	16.5	6.25	17.88	34
RC-RT650-OHP	RC-RT605-OHP	3/8	50	4800	3/8	1/2	16.5	7.75	17.88	46

\*Weight of model with hose. Additional lengths available as standard. Contact SVI at 800-321-8173.



*This catalog is a sampling of the*

## **best selling hose, cord and cable reels!**

### **MORE OPTIONS AND CUSTOM REELS AVAILABLE!**

*If there's something you don't see, give us a call!*

## **800-321-8173**



RC-4625-OLP

**Series 4000, 5000 & 5005**

**Premium Duty Spring Retractable Hose Reels**

**Spring Driven Air / Water / Oil / Grease - 1/4", 3/8", 1/2" I.D.**

Series 4000, 5000 & 5005 reels are durable and compact for a wide range of applications with critical space requirements. A full flow shaft and swivel assures maximum product delivery. The Series 5005 reel can handle hose lengths up to 50 feet. Reels are all-steel construction and compact for different applications. Guide arm adjusts to two positions. Consult SVI for other products and hoses.

Quiet Latch with Hose	Ratchet Latch with Hose	Quiet Latch without Hose	Hose ID (in)	Hose Length (ft)	Max PSI	(M)NPTF Hose Outlet (in)	(F)NPTF Reel Inlet (in)	DIMENSIONS (in)			*Shipping Weight (lbs)
								Length	Width	Height	
<b>LOW PRESSURE AIR / WATER REELS</b>											
MAXIMUM TEMPERATURE 150° F (65° C)											
RC-4425-OLP	RC-B4425-OLP	RC-4400-OLP	1/4	25	300	1/4	3/8	12.63	5.38	12.88	19
RC-4435-OLP	RC-B4435-OLP	RC-4400-OLP	1/4	35	300	1/4	3/8	12.63	5.38	12.88	19
RC-5450-OLP	RC-B5450-OLP	RC-5400-OLP	1/4	50	300	1/4	3/8	13.5	6	14.5	26
RC-4625-OLP	RC-B4625-OLP	RC-4600-OLP	3/8	25	300	1/4	3/8	12.63	5.38	12.88	20
RC-5635-OLP	RC-B5635-OLP	RC-5600-OLP	3/8	35	300	1/4	3/8	13.5	6	14.5	25
RC-5650-OLP	RC-B5650-OLP	RC-5605-OLP	3/8	50	300	1/4	3/8	16.5	6	17.5	36
RC-A5825-OLP	RC-B5825-OLP	RC-A5800-OLP	1/2	25	300	1/2	3/8	13.5	6	14.5	27
RC-A5835-OLP	RC-B5835-OLP	RC-A5805-OLP	1/2	35	300	3/8	3/8	16.5	6	17.5	39
RC-A5850-OLP	RC-B5850-OLP	RC-A5806-OLP	1/2	50	300	1/2	3/8	16.5	7	17.5	41
<b>MEDIUM PRESSURE OIL REELS</b>											
MAXIMUM TEMPERATURE 210° F (99° C)											
RC-5435-OMP	RC-B5435-OMP	RC-5400-OMP	1/4	35	2750	1/4	3/8	13.5	6	14.5	31
RC-5630-OMP	RC-B5630-OMP	RC-5600-OMP	3/8	30	2600	3/8	3/8	13.5	6	14.5	31
RC-A5835-OMP	RC-B5835-OMP	RC-A5805-OMP	1/2	35	3250	1/2	3/8	16.5	6	17.5	42
<b>HIGH PRESSURE GREASE REELS</b>											
MAXIMUM TEMPERATURE 210° F (99° C)											
RC-5435-OHP	RC-B5435-OHP	RC-5405-OHP	1/4	35	5000	1/4	1/4	16.5	6	17.5	39
RC-5625-OHP	RC-5625-OHP	RC-5600-OHP	3/8	25	4800	1/4	1/4	13.5	6	14.5	32

\*Weight of model with hose. Mounts to floor, wall, ceiling or vehicle.

**Series 7000**

**Heavy Duty Spring Retractable Hose Reels**

**Spring Driven Air / Water / Oil / Grease - 1/4", 3/8", 1/2", 3/4" I.D.**

Reelcraft's popular Series 7000 is very robust and ideal for the most demanding industrial and commercial applications. The reel's base and guide arms are formed from high-grade steel and engineered with structural forms and gussets to yield the greatest amount of strength. The Series 7000 incorporates an all steel construction and a baked-on powder coat finish to produce a rugged corrosion resistant product suitable for a wide variety of heavy duty applications. The standard low pressure hose is for air or water service only. The basic reel without hose can be used for air, water or oil. Consult SVI for other products and hoses.



RC-7850-OLP

Model with Hose	Model without Hose	Hose ID (in)	Hose Length (ft)	Max PSI	(M)NPTF Hose Outlet (in)	(F)NPTF Reel Inlet (in)	DIMENSIONS (in)			*Shipping Weight (lbs)	
							Length	Width	Height		
<b>LOW PRESSURE AIR / WATER REELS</b>											
MAXIMUM TEMPERATURE 150° F (65° C)											
RC-7650-OLP	RC-7600-OLP	3/8	50	300	1/4	1/2	19	6.13	20.25	43	
RC-7670-OLP	RC-7600-OLP	3/8	70	300	1/4	1/2	19	6.13	20.25	47	
RC-7850-OLP	RC-7800-OLP	1/2	50	300	3/8	1/2	19	6.13	20.25	47	
RC-7850-OLP121	RC-7800-OLP	1/2	50	300	1/2	1/2	19	6.13	20.25	47	
RC-7925-OLP	RC-7900-OLP	3/4	25	250	3/4	3/4	19	6.13	20.25	47	
<b>MEDIUM PRESSURE OIL REELS</b>											
MAXIMUM TEMPERATURE 210° F (99° C)											
RC-7850-OMP	RC-7800-OMP	1/2	50	3250	1/2	1/2	19	6.13	20.25	57	
<b>HIGH PRESSURE GREASE REELS</b>											
MAXIMUM TEMPERATURE 210° F (99° C)											
RC-7650-OHP	RC-7600-OHP	3/8	50	4800	1/4	1/2	19	6.13	20.25	60	

\*Weight of model with hose. Mounts to floor, wall, ceiling or vehicle.



RC-DP7850-OLP

**Series DP5000 / DP7000 / 80000**

**Compact Dual Pedestal Hose Reels**

**Spring Driven Air / Water / Oil / Grease - 1/4", 3/8", 1/2" ID**

Reelcraft's compact dual pedestal Series DP5000 and DP7000 features an innovative, non-welded, interlocking base. Independent testing to military standards has proven these reels stand up to heavy vibration and won't vibrate apart, which makes them especially strong and ideal for truck-mounted applications. Superbly engineered dual pedestal base and guide arm are structurally reinforced. All-steel construction and a baked-on powder coat finish combine to produce a rugged corrosion-resistant product suitable for a wide variety of heavy duty applications.

Model with Hose	Model without Hose	Hose ID (in)	Hose Length (ft)	Max PSI	(M)NPTF Hose Outlet (in)	(F)NPTF Reel Inlet (in)	DIMENSIONS (in)			*Shipping Weight (lbs)
							Length	Width	Height	
<b>LOW PRESSURE AIR / WATER REELS</b>				MAXIMUM TEMPERATURE 150° F (65° C)						
RC-DP5435-OLP	RC-DP5400-OLP	1/4	35	300	1/4	1/2	14.38	8	16.38	34
RC-DP5450-OLP	RC-DP5400-OLP	1/4	50	300	1/4	1/2	14.38	8	16.38	37
RC-DP7450-OLP	RC-DP7400-OLP	1/4	50	300	1/4	1/2	16.5	8	17	46
RC-DP5635-OLP	RC-DP5600-OLP	3/8	35	300	1/4	1/2	14.38	8	16.38	41
RC-DP5650-OLP	RC-DP5605-OLP	3/8	50	300	1/4	1/2	14.38	9	16.38	44
RC-DP7650-OLP	RC-DP7600-OLP	3/8	50	300	1/4	1/2	16.5	8	17	50
RC-81100-OLP	RC-81000-OLP	3/8	100	300	3/8	1/2	24	10.13	25.38	82
RC-DP-5835-OLP	RC-5800-OLP	1/2	35	300	3/8	1/2	14.38	9	16.38	52
RC-DP7850-OLP	RC-7800-OLP	1/2	50	300	3/8	1/2	16.5	9	17	53
RC-82075-OLP	RC-82000-OLP	1/2	75	300	1/2	1/2	24	10.13	25.38	87
RC-82100-OLP	RC-82000-OLP	1/2	100	300	1/2	1/2	24	10.13	25.38	95
RC-83050-OLP	RC-83000-OLP	3/4	50	250	3/4	3/4	24	10.13	25.38	88
RC-D83075-OLP	RC-D83000-OLP	3/4	75	250	3/4	3/4	24	14.25	25.38	102
RC-D84050-OLP	RC-D84000-OLP	1	50	250	3/4	1	24	15.25	25.38	103
<b>MEDIUM PRESSURE OIL REELS</b>				MAXIMUM TEMPERATURE 210° F (99° C)						
RC-DP7650-OMP	RC-DP7600-OMP	3/8	50	2600	3/8	1/2	16.5	8	17	55
RC-DP5835-OMP	RC-DP5800-OMP	1/2	35	3250	1/2	1/2	14.38	9	16.38	54
RC-DP7850-OMP	RC-DP7800-OMP	1/2	50	3250	1/2	1/2	16.5	9	17	64
RC-82075-OMP	RC-82000-OMP	1/2	75	2000	1/2	1/2	24	10.13	25.38	101
RC-83050-OMP	RC-83000-OMP	3/4	50	1250	3/4	3/4	24	10.13	25.38	98
<b>HIGH PRESSURE GREASE REELS</b>				MAXIMUM TEMPERATURE 210° F (99° C)						
RC-DP7450-OHP	RC-DP7400-OHP	1/4	50	5000	1/4	1/2	16.5	8	17	59
RC-DP5635-OHP	RC-DP5600-OHP	3/8	35	4800	1/4	1/2	14.38	9	16.38	43
RC-DP7650-OHP	RC-DP7600-OHP	3/8	50	4800	1/4	1/2	16.5	8	17	65
RC-81075-OHP	RC-81000-OHP	3/8	75	4800	3/8	1/2	24	10.13	25.38	111
RC-81000-OHP	RC-81000-OHP	3/8	100	4800	3/8	1/2	24	10.13	25.38	127

\*Weight of model with hose. Mounts to floor, wall, ceiling or vehicle.

**TOLL FREE:  
800-321-8173**

**Hose Reels By Reelcraft®**

entire contents copyright © 2013 SVI International, Inc.



**Series D8000 / E8000 & D9000 / E9000  
Vehicle-Mount Hose Reels  
Spring Driven Air / Water / Oil / Grease  
1/4", 3/8", 1/2" I.D.**

The ultra duty aluminum cast base and arm of the Series D8000 and E8000 offers the highest rigidity among this class of hose reels. The guide arm is field-adjustable for floor, wall, ceiling, pit and truck mounting. The durable baked-on, powder-coat finish provides a high quality ultra-violet radiation (sunlight), weather and chip resistant finish. Series E reels are the same as D reels, except E Series reels are fully enclosed.



Series E  
Enclosed Models  
Available!  
RC-7650-ELP



RC-D9350-OLPBW



RC-8650-OLP

Model with Hose	Model without Hose	Hose ID (in)	Hose Length (ft)	Max PSI	(M)NPTF Hose Outlet (in)	(F)NPTF Reel Inlet (in)	DIMENSIONS (in)			*Shipping Weight (lbs)
LOW PRESSURE AIR / WATER REELS				MAXIMUM TEMPERATURE 150° F (65° C)						
RC-D8650-OLP	RC-D8600-OLP	3/8	50	300	1/4	1/2	19	9.25	21.13	45
RC-D8850-OLP	RC-D8800-OLP	1/2	50	300	3/8	1/2	19	9.25	21.13	47
RC-D9299-OLPBW	RC-D9200-OLPBW	1/2	100	300	1/2	1/2	24.13	12	26.38	127
RC-D9350-OLPBW	RC-D9300-OLPBW	3/4	50	250	3/4	3/4	24.13	12	26.38	140
RC-D9375-OLPBW	RC-D9300-OLPBW	3/4	75	250	3/4	3/4	24.13	12	26.38	152
RC-D9399-OLPBW	RC-D9305-OLPBW	3/4	100	250	3/4	3/4	24.13	13.38	26.38	143
RC-D9450-OLPBW	RC-D9400-OLPBW	1	50	250	3/4	1	24.13	12	26.38	157

\*Weight of model with hose. Medium and high pressure styles available as standard. Contact SVI at 800-321-8173.



RC-SD13050-OLP

**Series SD10000  
Low Profile Reels**

**Spring Driven Air / Water / Oil / Vacuum Recovery - 3/4", 1" I.D.**

The Series SD10000 hose reels are designed to facilitate larger diameter 3/4" and 1" hose up to 50 feet. They feature a high quality external drive spring and a heavy gauge all-bolted frame. This is the most compact reel in its class, making it ideal for mounting in truck cabinets or other areas where space is limited.

Model with Hose	Model without Hose	Hose ID (in)	Hose Length (ft)	Max PSI	(M)NPTF Hose Outlet (in)	(F)NPTF Reel Inlet (in)	DIMENSIONS (in)			*Shipping Weight (lbs)
LOW PRESSURE AIR / WATER REELS				MAXIMUM TEMPERATURE 210° F (99° C)						
RC-SD13035-OLP	RC-SD13000-OLP	3/4	35	300	3/4	1	19.125	18.75	18.25	95
RC-SD13050-OLP	RC-SD13000-OLP	3/4	50	300	3/4	1	19.125	18.75	18.25	105
RC-SD14035-OLP	RC-SD14000-OLP	1	35	300	3/4	1	19.125	18.75	18.25	102
RC-SD14050-OLP	RC-SD14005-OLP	1	50	300	3/4	1	19.125	18.75	20.75	125
MEDIUM PRESSURE OIL REELS				MAXIMUM TEMPERATURE 210° F (99° C)						
RC-SD13050-OLP	RC-SD13000-OLP	3/4	50	1250	3/4	1	19.125	18.75	18.25	105
VACUUM RECOVERY REELS				MAXIMUM TEMPERATURE 210° F (99° C)						
RC-SD13035-OVP	RC-SD13000-OVP	3/4	35	28 Hg~300psi	3/4	1	19.125	18.75	18.25	95
RC-SD13050-OVP	RC-SD13000-OVP	3/4	50	28Hg~300psi	3/4	1	19.125	18.75	18.25	105
RC-SD14035-OVP	RC-SD14000-OVP	1	35	28Hg~300psi	1	1	19.125	18.75	18.25	102
RC-SD14050-OCF	RC-SD14005-OVP	1	50	28Hg~300pso	1	1	19.125	18.75	20.75	125
LOW PRESSURE FUEL REELS				MAXIMUM TEMPERATURE 150° F (65° C)						
RC-FSD13035-OLP	RC-FSD13000-OLP	3/4	35	**50	3/4	1	19.125	18.75	18.25	102
RC-FSD13050-OLP	RC-FSD13000-OLP	3/4	50	**50	3/4	1	19.125	18.75	18.25	110
RC-FSD14035-OLP	RC-FSD14000-OLP	1	35	**50	1	1	19.125	18.75	18.25	105
RC-FSD14050-OLP	RC-FSD14005-OLP	1	50	**50	1	1	19.125	18.75	20.75	127

\*Weight of model with hose. \*\*Models equipped with fuel grade hose. UL330 and ULC approved hose. 250 PSI minimum burst. NOTE: Vacuum Recovery Reel capacities based on SAE 100 R4 hose or equivalent. Minimum bend radius is 8", max O.D. 1.500".

P  
a  
g  
e  
7



RC-G3050

**Series G 3000  
Static Discharge / Grounding Reels  
Spring Driven**

Static discharge reels are used to ground equipment operating in hazardous atmospheres, such as fuel trucks or carts transferring flammable materials. When properly clamped to ground, the static discharge reel dissipates static electrical buildup, reduces chances of sparking and the potential for explosion.

Model	Cable Length (ft)	Description	DIMENSIONS (in)			Shipping Weight (lbs)
			Length	Width	Height	
RC-G3050	50	Single 7 x 7 Strand Steel Cable	8.62	3.35	8.81	12
RC-G3050N	50	Nylon Covered Cable	8.62	3.35	8.81	12
RC-G3050Y	50	Steel Cable Splits in 2 @ 15 ft.	8.62	3.35	8.81	12
RC-GA3100N	100	Hi-Vis Orange Nylon Covered Cable	9.25	4.31	9.75	16



Series F7000  
Pictured

**Series F7000 / FD9000 / F80000 / FD80000 / FSD10000  
Fuel Delivery Reels**

Reelcraft's spring retractable fuel delivery reels, equipped with seals, incorporate metal forms to insure the greatest possible strength and are ideal for mobile applications. These rugged, corrosion-resistant reels are suitable for a wide variety of fuel applications. All models listed are supplied with our ball-bearing style swivel.

Model with Hose	Model without Hose	Hose ID (in)	Hose Length (ft)	Max PSI	(M)NPTF Hose Outlet (in)	(F)NPTF Reel Inlet (in)	DIMENSIONS (in)			*Shipping Weight (lbs)
				MAXIMUM TEMPERATURE 150° F (65° C) WITH HOSE, OR 210° F (99° C) WITHOUT HOSE.			Length	Width	Height	
RC-F7925-OLP	RC-F7900-OLP	3/4	25	**50	3/4	3/4	19	6.13	20.25	47
RC-F83050-OLP	RC-83000-OLP	3/4	50	**50	3/4	3/4	24	10.13	25.38	89
RC-83075-OLP	RC-83000-OLP	3/4	75	**50	3/4	3/4	24	14.25	25.38	115
RC-84050-OLP	RC-FD84000-OLP	1	50	**50	1	1	24	15.25	25.38	115
RC-FD9350-OLPBW	RC-FD9300-OLPBW	3/4	50	**50	3/4	3/4	24.13	12	26.38	140
RC-FD9450-OLPBW	RC-FD9400-OLPBW	1	50	**50	1	1	24.13	12	26.38	157
RC-FSD13035-OLP	RC-FSD13000-OLP	3/4	35	**50	3/4	1	19.13	18.75	18.25	102
RC-FSD13050-OLP	RC-FSD13000-OLP	3/4	50	**50	3/4	1	19.13	18.75	18.25	110
RC-FSD14035-OLP	RC-FSD14000-OLP	1	35	**50	1	1	19.13	18.75	18.25	105
RC-FSD14050-OLP	RC-FSD14005-OLP	1	50	**50	1	1	19.13	20.75	18.25	127

\*Weight of model with hose. \*\*Models equipped with fuel grade hose. UL330 and ULC approved hose. 250 PSI minimum burst. NOTE: Images of each series not shown above. See 9000 and SD10000 for other images.





RC-TH88050-OMP  
Pictured

**Series TH  
Dual Hydraulic Spring Retractable Reels**

Reelcraft's hydraulic reels are used for medium pressure dual hydraulic hose applications and are ideal for operating hydraulic cylinders, tools and equipment. Reelcraft's Series TH reels incorporate contemporary engineering and manufacturing techniques for trouble-free performance. Reels are all steel construction and compact for applications with critical space requirements.

Model with Hose	Model without Hose	Hose ID (in)	Hose Length (ft)	Max PSI	(M)NPTF Hose Outlet (in)	(F)NPTF Reel Inlet (in)	DIMENSIONS (in)			*Shipping Weight (lbs)
							Length	Width	Height	
RC-TH5425-OMP	RC-TH5400-OMP	1/4	25	2000	1/4	1/4	13.5	6	14.5	34
RC-TH7445-OMP	RC-TH7400-OMP	1/4	45	2000	1/4	1/4	19	7	20.25	60
RC-THA7630-OMP	RC-THA7600-OMP	3/8	30	2000	3/8	3/8	19	7	20.25	53
RC-TH86050-OMP	RC-TH86000-OMP	3/8	50	2000	3/8	3/8	24	13	25.38	99
RC-TH88050-OMP	RC-TH88000-OMP	1/2	50	2000	1/2	1/2	24	13	25.38	104

\*Weight of model with hose.



RC-PW81000-OHP  
Pictured  
\*Hose Not Included

**Series 30000 / H18006 / PW  
Heavy Duty Pressure Wash Reels**  
Hand Crank, Spring Driven, or Motor Driven Available

Compact design and quality steel construction are incorporated into Reelcraft's newest line of pressure wash reels. The Series H18006 and PW reels are able to carry 100 to 300 feet of hose and are complete with a high pressure swivel for maximum product delivery. The swivel is designed to handle a broad range of pressures, temperatures and chemicals; perfect for agricultural/marine, equipment cleaning and pressure washing applications.

Model without Hose	Hose ID (in)	Hose Capacity (ft)	Max PSI	(M)NPTF Hose Outlet (in)	(F)NPTF Reel Inlet (in)	DIMENSIONS (in)			Shipping Weight (lbs)	
						Length	Width	Height		
<b>HAND CRANK REELS</b>						MAXIMUM TEMPERATURE 400° F (200° C)				
RC-H18006-M	3/8	100	5000	1/2	1/2	17.75	13.75	20.125	31	
RC-CA38106-M	3/8	140	5000	1/2	1/2	17.75	19	20.25	41	
RC-CA38112-M	3/8	300	5000	1/2	1/2	17.75	25	20.25	46	
<b>SPRING DRIVEN REELS</b>						MAXIMUM TEMPERATURE 400° F (200° C)				
RC-PW7600-OHP	3/8	50	5000	1/2	1/2	19	7	20.25	43	
RC-PW7650-OHP*	3/8	50	4800	1/4	1/2	19	7	20.25	50	
RC-PW81000-OHP	3/8	100	5000	3/8	1/2	24	10.5	25.375	86	

\*Hose included with this model; maximum temperature 212° F (100° C)



RC-CT6050HN



**Series C**

**Light Duty (General Use) Hand Crank Hose Reels**  
Hand Crank Air Hose Reel / Water Hose Reel  
and Pressure Wash Hose Reel - 3/8", 1/2" I.D.

Reelcraft's Series C hose reels are designed for lighter-duty applications that require longer lengths of low pressure air hose or water hose or high pressure wash hose. Series C hand crank reels include a balanced brass swivel and brass inlet. The Series C is the product of lighter weight components and forward-thinking design. Reels in this family benefit from a tough, corrosion-resistant powder coat paint. All reels feature a drag break to prevent de-spooling when reel is not in use. The Series C is an economical choice for storing and retrieving hose.

RC-CU6100LN



Model without Hose	Hose ID (in)	Hose Length (ft)	Max PSI	(M)NPTF Hose Outlet (in)	(F)NPTF Reel Inlet (in)	DIMENSIONS (in)			Shipping Weight (lbs)
			MAXIMUM TEMPERATURE 150° F (65° C)			Length	Width	Height	
<b>LOW PRESSURE AIR / WATER REELS</b>									
RC-CU6050LN	3/8	50	300	3/8	3/8	11	16.75	11.5	11
RC-CU6100LN	3/8	100	300	3/8	3/8	11	20.8	11.5	16
RC-CT6050LN	3/8	50	300	1/2	1/2	13.25	15.4	15.67	13
RC-CT6100LN	3/8	100	300	1/2	1/2	13.25	19.44	15.67	20
RC-CU8050LN	1/2	50	300	1/2	1/2	13.25	16.75	14.3	13
RC-CU8100LN	1/2	100	300	1/2	1/2	13.25	20.8	14.3	17
RC-CT8050LN	1/2	50	300	1/2	1/2	13.25	15.4	15.67	13
RC-CT8100LN	1/2	100	300	1/2	1/2	13.25	19.44	15.67	17
<b>HIGH PRESSURE WASH REELS</b>									
			MAXIMUM TEMPERATURE 210° F (99° C)						
RC-CT6050HN	3/8	50	5000	3/8	1/2	13.25	15.4	15.67	13
RC-CT6100HN	3/8	100	5000	3/8	1/2	13.25	19.44	15.67	17
RC-CM6050HN	3/8	50	5000	3/8	1/2 (M)	13.25	16.4	13.25	14
RC-CM6100HN	3/8	100	5000	3/8	1/2 (M)	13.25	20.4	13.25	18

Hose not included. Hose assemblies will be quoted upon request.



RC-H18000-M

**Series H**

**Medium Duty Hand Crank Reels**  
Air / Water / Oil - 3/8", 1/2", 3/4" ID

Series H is an economical reel designed for medium duty applications requiring long lengths of hose. It is equally suited for plant or field use such as turf care, pest control, steam cleaning and more. Shipped completely assembled, ready to install. Reels are supplied without hose. Stainless models available. For Model specifications, please see Stainless Steel Series.

Model without Hose	Hose ID (in)	Hose Capacity (ft)	Max PSI	(M)NPTF Hose Outlet (in)	(F)NPTF Reel Inlet (in)	DIMENSIONS (in)			Shipping Weight (lbs)
			MAXIMUM TEMPERATURE 150° F (65° C)			Length	Width	Height	
<b>LOW PRESSURE AIR / WATER REELS</b>									
RC-H16000	3/8	300	500	1/4	3/8	20	18.25	19	32
RC-H18000	1/2	200	1000	1/2	1/2	20	18.25	19	34
RC-H19000	3/4	90	1000	3/4	3/4	20	18.25	19	33
<b>MEDIUM PRESSURE OIL REELS</b>									
			MAXIMUM TEMPERATURE 210° F (99° C)						
RC-H18000-M	1/2	200	3000	1/2	1/2	20	18.25	19	34
RC-H29000-M	3/4	150	3000	3/4	3/4	20	24.25	19	35

Hose not included. Many sizes not listed available as standard. Call SVI at 800-321-8173



RC-EA33112-L12D

**Series 30000**

**Heavy Duty for Long Hose Lengths**

**Heavy Duty Hand Crank or Motor Driven Reels**

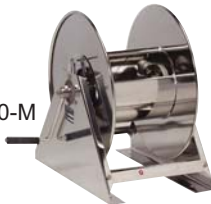
Reelcraft's Series 30000 reels are designed for rugged, heavy duty applications requiring long lengths of hose and large storage capacity. All-bolted unitized construction with no welds to fatigue, full flow swivel and heavy gauge steel frame, spool and drum ensure longest service life.

Model without Hose	Hose ID (in)	Hose Capacity (ft)	Max PSI	(F)NPTF Hose Outlet (in)	(F)NPTF Reel Inlet (in)	DIMENSIONS (in)			Shipping Weight (lbs)
						Length	Width	Height	
<b>HEAVY DUTY HAND CRANK REELS</b>									
RC-CA32106-L	1/2	100	1000	1/2	1/2	17.75	19	20.25	40
RC-CA32112-L	1/2	200	1000	1/2	1/2	17.75	25	20.25	46
RC-CA32118-L	1/2	325	1000	1/2	1/2	17.75	31	20.25	51
RC-CA33106-L	3/4	50	1000	3/4	3/4	17.75	19	20.25	41
RC-CA33112-L	3/4	100	1000	3/4	3/4	17.75	25	20.25	46
RC-CA33118-L	3/4	175	1000	3/4	3/4	17.75	31	20.25	51
RC-CA37118-L	1	100	300	1 (M)	1	17.75	31	20.25	54
RC-CA32106-M	1/2	100	3000	1/2	1/2	17.75	19	20.25	42
RC-CA32112-M	1/2	200	3000	1/2	1/2	17.75	25	20.25	46
RC-CA32118-M	1/2	325	3000	1/2	1/2	17.75	31	20.25	52
RC-CA33112-M	3/4	100	3000	3/4	3/4	17.75	25	20.25	47
RC-CA33118-M	3/4	175	3000	3/4	3/4	17.75	31	20.25	51
<b>MOTOR DRIVEN REELS - 12 VDC (24 VDC, 115 VAC and air motors available as standard) Series 30000 available with pneumatic and hydraulic motor.</b>									
RC-EA32118-L12D	1/2	100	1000	3/4	3/4	17.75	23.63	20.25	71
RC-EA33112-L12D	3/4	100	1000	3/4	3/4	17.75	23.63	20.25	71

Hose not included. Many sizes not listed available as standard, contact manufacturer or go to reelcraft.com for master catalog listing.



RC-7800-OLS



RC-HS18000-M

**Stainless Steel Series**

**Corrosion-Resistant Reels**

**Hand Crank Air / Water / Oil - 1/4", 3/8", 1/2", 3/4", 1" I.D.**

**Spring Driven Air / Water / Oil - 3/8", 1/2", 3/4", 1" I.D.**

Reelcraft's stainless steel hose reels are ideal for food processing, pre-rinse, wash down, chemical transfer and industrial-solvent handling. Also suitable for coastal, offshore and on-board ship in marine applications where the harsh environment of salt water spray requires the use of stainless hose reels. Swivel includes Viton O-rings. Hose and bumper not included. Note: Standard latch parts are made from aluminum. Stainless latch parts are available as a standard option by placing a -S at the end of the part number.

\*\*80000 series reels have an aluminum fluid path and may not be suitable for some applications.

Model with Hose	Hose ID (in)	Hose Length (ft)	Max PSI	(F)NPTF Hose Outlet (in)	(F)NPTF Reel Inlet (in)	DIMENSIONS (in)			Shipping Weight (lbs)
						Length	Width	Height	
RC-5600-OLS	3/8	35	500	3/8	3/8	13.5	6	14.5	22
RC-7800-OLS	1/2	50	500	1/2	1/2	19	6.13	20.25	41
RC-82000-OLS**	1/2	100	500	1/2	1/2	24	10.13	25.38	81
RC-D83000-OLS**	3/4	75	500	3/4	3/4	24	14.25	25.38	84
RC-D9300-OLSBW	3/4	75	500	3/4	3/4	24.13	16.75	26.38	116
RC-D84000-OLS**	1	50	500	1	1	24	15.25	25.38	92
RC-HS18000-M*	1/2	200	3000	1/2	1/2	20	18.25	19	36

Hose and bumper not included. Latch parts cast of aluminum, all stainless is available except for Series 80000. \*Hand crank rewind. \*\*80000 series reels have an aluminum fluid path and may not be suitable for some applications.



RC-5635-OLPSW5



RC-A5835-OLBSW23

**Series 5000**

**Potable (Drinking Water) and Pre-Rinse Reels**  
Spring Driven - 3/8", 1/2" I.D.

Reelcraft's potable (drinking) water reels feature a full-flow stainless steel shaft and PVC swivel and convenient fast hook-up and disconnect. Pre-rinse reels are crafted for use in commercial establishments such as restaurants and institutions. A standard lever-operated spray valve is included. These reels are perfect for commercial use, restaurants, schools, home/garden and more.

Model with Hose	Hose ID (in)	Hose Length (ft)	Max PSI	(M)NPTF Hose Outlet (in)	(F)NPTF Reel Inlet (in)	DIMENSIONS (in)			Shipping Weight (lbs)
						Length	Width	Height	
RC-A5835-OLBSW23	1/2	35	150	3/4 Garden Hose (F)	1/2 male	13.5	6	14.5	28
RC-5635-OLPSW5	3/8	35	250	Spray Valve	3/8	13.5	6	14.5	27
RC-5635-ELPSW5**	3/8	35	250	Spray Valve	3/8	15	7	18.5	37
RC-5635-OLSSW5*	3/8	35	250	Spray Valve	3/8	13.5	6	14.5	28
RC-600248	360° swivel (place between hose and nozzle) on spray valve type								0.5

\* Stainless steel reel \*\*Enclosed spool



RC-SGA3650-OLP

**Series S**

**Spring Retractable Composite Hose Reels**  
Spring Driven Air / Water - 3/8", 1/2" I.D.

The S Series reel is economical, lightweight and easy to handle. Its technical design and materials were selected to meet the demands of an industrial grade reel for continuous, trouble-free operation. This reel is made of corrosion proof, tough polypropylene and extensive tests have shown it to be highly resistant to the vast majority of acids and alkalis. The S Series design both protects the hose and allows easy cleaning of both hose and reel.

Model with Hose	Hose ID (in)	Hose Length (ft)	Max PSI	(M)NPTF Hose Outlet (in)	(F)NPTF Reel Inlet (in)	DIMENSIONS (in)			Shipping Weight (lbs)
						Length	Width	Height	
<b>AIR* / WATER* REELS</b>						WORKING TEMPERATURE 150° F (65° C)			
RC-SGA3650-OLP	3/8	50	232	3/8	3/8	22.75	9.5	19	21
RC-SGA3665-OLP	3/8	66	232	3/8	3/8	22.75	9.5	19	25
RC-SGA3850-OLP	1/2	50	232	1/2	1/2	22.75	9.5	19	23
<b>WATER REEL</b> - Garden-style hose end.						WORKING TEMPERATURE 150° F (65° C)			
RC-SWA3850-OLP	5/8	50	125	3/4 NH	1/2	22.75	9.5	19	23
<b>HOT WATER WASH REEL</b> - WORKING TEMPERATURE 185° F (85° C); WORKING PRESSURE IS RELATED TO WORKING TEMPERATURE									
RC-SHA3850-OLP	1/2	50	232	1/2	1/2	22.75	9.5	19	22
<b>CHEMICAL DELIVERY REEL</b>						WORKING TEMPERATURE 150° F (65° C)			
RC-SCA3850-OLP	1/2	50	232	1/2	1/2	22.75	9.5	19	22
<b>OXYGEN/ACETYLENE REEL</b>						WORKING TEMPERATURE 150° F (65° C)			
RC-STW3450-OLP	1/4	50	300	9/16"18(F)LH-RH	9/16"18(M)LH-RH	22.75	11.25	19	29

Hose included. \*Air hose can be used for water on these models.

P  
a  
g  
e



Heavy Duty  
RC-TBL-10  
Pictured



Bright zinc plated steel safety latch for tool attachment and other uses. Measures 2.375" long. Included with each model.

**Series TB and TBL  
Tool Balancer Reels**

Tool balancers make tools nearly weightless, reducing operator fatigue. Reelcraft's Series TB and TBL also improve safety and ergonomics and help prevent tools from being accidentally dropped, reducing tool damage.

Model	Min-Max Load (lbs)	Cable Length	Ratchet Lock	Weight (lbs)
RC-TB-01	0 - 1.5	6'	NO	1
RC-TB-03	1.5 - 3	6'	NO	1
RC-TB-05	3 - 5	6'	NO	1.5
RC-TB-10	5 - 10	8'	NO	9
RC-TB-12	8 - 12	8'	NO	10
RC-TB-15	10 - 15	8'	NO	10
RC-TB-23	16 - 23	8'	NO	10
RC-TBL-10	5 - 10	8'	YES	9
RC-TBL-12	8 - 12	8'	YES	10
RC-TBL-15	10 - 15	8'	YES	10
RC-TBL-23	16 - 23	8'	YES	10



Medium Duty  
RC-LG3050-143-9  
Pictured

**Series LD / LG / LH  
Light / Medium Duty Cord Reels**

Reelcraft's new line of light and medium duty cord reels are designed for less strenuous applications in which a capable and long-lasting reel is required. These reels accommodate lengths of 16/3, 14/3, 12/3, and 10/3 diameter cable.

They help make the workplace safe by keeping long electrical cords up and out of harm's way. Series LH is a portable reel. **\*1-Year Warranty.**



RC-LH2080-143

Model with Cord	Accessory	REEL CAPABILITIES				DIMENSIONS (in)			Volts	Amps	Shipping Weight (lbs)
		Length	# Cond	AWG	Type	Length	Width	Height			
<b>POWER CORD REELS</b>											
RC-LD2030-163-9	Triple Receptacle	30'	3	16	SJTW	9.25	3.75	11.88	125	10	8
RC-LD2030-143-9	Triple Receptacle	30'	3	14	SJTW	9.25	3.75	11.88	125	13	9
RC-LG3050-143-9	Triple Receptacle	50'	3	14	SJTW	11.5	5	15.25	125	13	14
RC-LG3040-123-9	Triple Receptacle	40'	3	12	SJTW	11.5	5	15.25	125	15	14
<b>LIGHT CORD REELS</b>											
RC-LD2040-163-2	Flourescent	40'	3	16	SJTW	9.25	3.75	11.88	120	0.3	11
RC-LG3050-163-8	Flourescent	50'	3	16	SJTW	11.5	5	15.25	120	10	13

Incandescent bulb 75 watt maximum. For indoor use only. All models UL listed at 125 Volt 60 Hz single phase. Series LD/LG flourescent light cord reels are not UL listed for Canada.

Model with Cord	Accessory	REEL CAPABILITIES				DIMENSIONS (in)			Volts	Amps	Shipping Weight (lbs)
		Length	# Cond	AWG	Type	Length	Width	Height			
<b>LIGHT DUTY PORTABLE CORD REELS</b>											
RC-LH2080-143	4 Outlets	80'	3	14	SJTW	11	8.75	13.75	125	10	15
RC-LH3100*	4 Outlets	100'	3	10	STW	17.25	11.13	17.75	125	15	13

\*Does not include cord



## Series L4000 / L5000 / L7000

### Power Cord & Light Reels

Reelcraft's Series L4000, L5000 and L7000 power cord and light reels offer many different styles of outlets and lamps. Easy-to-mount and structurally strong, the power cord and light reels have a robotically welded heavy gauge steel frame that attaches to most structurally sound surfaces. Multiple guide arm positions allows for versatile uses and easier field adjustment. The drive mechanism is enclosed for protection against the environment.

RC-L4050-163-10



RC-L-4035-163-3

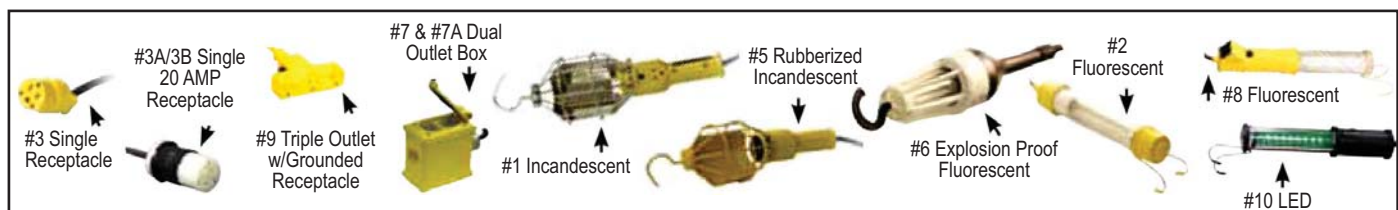


RC-L-4545-123-9G



Model with Cord	Accessory	REEL CAPABILITIES				DIMENSIONS (in)			Volts	Amps	Shipping Weight (lbs)
		Length	# Cond	AWG	Type	Length	Width	Height			
<b>POWER CORD REELS</b>											
RC-L-4035-163-3	Single Receptacle	35'	3	16	SJTOW	12.63	9.38	13.25	125	13	25
RC-L-4050-163-3	Single Receptacle	50'	3	16	SJTOW	12.63	9.38	13.25	125	13	26
RC-L-4545-123-3	Single Receptacle	45'	3	12	SJEOOW	12.63	9.38	13.25	125	15	27
RC-L-5550-123-3	Single Receptacle	50'	3	12	SJEOOW	16.5	10.5	17.5	125	15	44
RC-L-4545-123-3A	Single Connector	45'	3	12	SJEOOW	12.63	9.38	13.25	125	20	28
RC-L-5550-123-3A	Single Connector	50'	3	12	SJEOOW	16.5	10.5	17.5	125	20	44
RC-L-4545-123-3B	Twist Lock Connector	45'	3	12	SJEOOW	12.63	9.38	13.25	125	20	28
RC-L-4545-123-7A	Duplex Outlet Box w/GFCI (F)	45'	3	12	SJEOOW	12.63	9.38	13.25	125	20	29
RC-L-4545-123-7	Duplex Outlet Box w/GFCI (F)	45'	3	12	SJEOOW	12.63	9.38	13.25	125	15	29
RC-L-5550-123-7	Duplex Outlet Box w/GFCI (F)	50'	3	12	SEOOOW	16.5	10.5	17.5	125	20*	45
RC-L-4050-163-9	Triple Tap Receptacle	50'	3	16	SJEOOW	12.63	9.38	13.25	125	13	26
RC-L-4545-123-9	Triple Tap Receptacle	45'	3	12	SJEOOW	12.63	9.38	13.25	125	15	28
RC-L-4545-123-9G	Triple Tap w/GFCI (F)	45'	3	12	SJEOOW	12.63	9.38	13.25	125	15	29
RC-L-4050-163-X	Flying Lead	50'	3	16	SJO	12.63	9.38	13.25	125	13	26
RC-L-4545-123-X	Flying Lead	45'	3	12	SJO	12.63	9.38	13.25	125	20	27
RC-L-5550-123-X	Flying Lead	50'	3	12	STOW	16.5	10.5	17.5	125	20	42
RC-L-5750-103-X	Flying Lead	50'	3	10	SO	16.5	12.5	17.5	125	30	55
RC-L-4000	Reel without Cord	50'	3	16	SJO	12.63	9.38	13.25	125	13	22
RC-L-4500	Reel without Cord	45'	3	12	SJO	12.63	9.38	13.25	125	20	22
RC-L-5500	Reel without Cord	50'	3	12	STOW	16.5	10.5	17.5	125	20	35
RC-L-5700	Reel without Cord	50'	3	10	SO	16.5	10.5	17.5	125	30	37
<b>LIGHT CORD REELS</b>											
RC-L-4035-163-1	Incandescent	35'	3	16	SJTOW	12.63	9.38	13.25	125	13	23
RC-L-4050-163-1	Incandescent	50'	3	16	SJTOW	12.63	9.38	13.25	125	13	27
RC-L-4035-162-2	Fluorescent	35'	2	16	SJTOW	12.63	9.38	13.25	125	0.3	26
RC-L-4050-162-2	Fluorescent	50'	2	16	SJTOW	12.63	9.38	13.25	125	0.3	26
RC-L-4035-A-163-5**	Rubberized Incandescent	35'	3	16	SJOW	12.63	9.38	13.25	125	15	28
RC-L-5245-A-163-6X**	Explosion-proof Fluorescent	45'	3	16	SEOW	13.5	10.5	14.5	125	0.3	39
RC-L-4035-163-8	Fluorescent Light & Outlet	35'	3	16	SJTO	12.63	9.38	13.25	125	10	25
RC-L-4050-163-8	Fluorescent Light & Outlet	50'	3	16	SJTO	12.63	9.38	13.25	125	10	27
RC-L-4035-163-10	LED	35'	3	16	SJTOW	12.63	9.38	13.25	125	13	26
RC-L-4050-163-10	LED	50'	3	16	SJTOW	12.63	9.38	13.25	125	13	28

Incandescent bulb 75 watt maximum. For indoor use only. \*Inlet plug is NEMA5 - 15P configuration. Plug not set for 20 amps. \*\*Auto switch models. All models UL listed at 125 Volt 60 Hz single phase. Series L4000/L5000 models are CSA certified for Canada.



P  
a  
g  
e  
14



RC-TW5425-OLP



**Series TW / BA  
Gas Welding Hose Reels**

Series TW and BA have an independent dual swivel body manufactured from aluminum and hard coated for wear resistance. This unique design assures positive separation of gases. Double-sealed, special molded O-rings prevent leakage. Swivel body and inlet are both permanently identified with machined grooves on the acetylene side to assure proper installation.

Model with Hose	Model without Hose	Hose ID (in)	Hose Capacity (ft)	Max PSI	Hose/Reel Outlet (in)	Reel Inlet (in)	DIMENSIONS (in)			*Shipping Weight (lbs)
				MAXIMUM TEMPERATURE 150° F (65° C)						
<b>RC-TW5425-OLP</b>	RC-TW5400-OLP	1/4	25	200	9/16-18 (F)	1/4 NPT (F)	13.75	6	14.25	26
<b>RC-TW7450-OLP</b>	RC-TW7400-OLP	1/4	50	200	9/16-18 (F)	1/4 NPT (F)	19	7	20.25	50
<b>RC-TW7460-OLP</b>	RC-TW7400-OLP	1/4	60	200	9/13-18 (F)	1/4 NPT (F)	19	7	20.25	55
				MAXIMUM TEMPERATURE 150° F (65° C)						
<b>RC-TW5425-OLPT</b>	RC-TW5400-OLPT	1/4	25	200	9/16-18 (F)	1/4 NPT (F)	13.75	6	14.5	26
<b>RC-TW7450-OLPT</b>	RC-TW7400-OLPT	1/4	50	200	9/16-18 (F)	1/4 NPT (F)	19	7	20.25	50
<b>RC-TW7460-OLPT</b>	RC-TW7400-OLPT	1/4	60	200	9/16-18 (F)	1/4 NPT (F)	19	7	20.25	55
<b>RC-TW84100-OLPT</b>	RC-TW84000-OLPT	1/4	100	200	9/16-18 (F)	9/16-18 (F)	24	13	25.375	101
<b>RC-TW86075-OLPT</b>	RC-TW86000-OLPT	3/8	75	200	9/16-18 (F)	9/16-18 (F)	24	13	25.375	99
	RC-BA36106-LT**	1/4	125	200	9/16-18 (M)	1/4 NPT (F)	28.63	15.63	20.5	50
	RC-BA36112-LT**	1/4	250	200	9/16-18 (M)	1/4 NPT (F)	28.63	21.63	20.5	57
	RC-T-1225-04**	1/4	150	200	9/16-18 (M)	9/16-18 (M)	18	16.25	19	19

\*Weight of model with hose. \*\*Hand crank rewind.



RC-WC80001

**Series WC / CEA  
Welding Cable Reels**

Series CEA and WC are designed to increase the safety in the work area with a resulting increase in efficiency and productivity. Welding cable reels store work lead or electrode lead, up to #2/0, safely and effectively when not in use. They have a continuous current path through a live 400 AMP, 90VDC (maximum) rated enclosed slip ring. Welding cable not included on all Series CEA and WC models.

See "Safe-T-Reels" section for more information on the Safe-T-Reels listed below.

Safe-T-Reel  
RC-T-2464-0



Model without Cable	#2	CABLE CAPACITY (ft)				Amps	Style	DIMENSIONS (in)			Shipping Weight (lbs)
		#1	1/0	2/0	Length			Width	Height		
<b>RC-WC7000</b>	----	50	50	50	400	Spring Driven	19	13.25	20.25	58	
<b>RC-WC80001</b>	----	75	75	75	400	Spring Driven	24	16	25.375	102	
<b>RC-WC80002</b>	----	100	----	----	400	Spring Driven	24	16	25.375	104	
<b>RC-CEA30006</b>	300	250	200	150	400	Single Hand Crank	19.38	21	20.25	46	
<b>RC-CEA30012*</b>	500	500	400	300	400	Single Hand Crank	19.38	27	20.25	54	
<b>SAFE-T-REELS</b>											
<b>RC-T-1460-0*</b>	----	250	200	200	250	Single Hand Crank	18	16.25	19	32	
<b>RC-T-2462-0*</b>	----	250	200	200	250	Dual Hand Crank/ Side-By Side	18	29	19	51	
<b>RC-T-2464-0*</b>	----	250	200	200	250	Dual Hand Crank/ Stacked	18	16.25	38	62	

Cable not included \*Hand crank rewind.

**CAUTION:** If cable reels are to be used for extended periods of time, unwind all cable from reel to prevent heat build-up. For indoor non weather-tight applications only.



**Series T**  
**Safe-T-Reel Series: Hand Crank**

Safe-T-Reels are ideal for applications where space, weight and flexibility are key. These reels are designed for manual winding of air / water / fuel gases hose, electric cord, and welding cable. Versatile in function, select configurations to suit specific needs. Safe-T-Reels offer trouble-free management of large capacities of hose, cable or cord. Suitable for outdoor use.

Models are without hose and/or cable. Caution: Compressed air hoses should not be converted to oxygen service. Compressed air hoses are often contaminated with an oil coating, which can react explosively when oxygen is introduced.



**Series 40 or Nordic**  
**Large Frame Reels**

**Series 40: 1" to 1-1/2" I.D., Lengths to 350'**

**Heavy Duty Nordic Series: 1/2" to 4" I.D., Lengths to 700' and more**

Series 40 large frame reels offer dimensional flexibility. Specify height, width and depth dimensions to fit your space requirements. Custom configurations will be quickly built to your specs. Contact customer service for details on Reelcraft's full range of Series 40 reels.

Nordic Series reels are rugged and durable, with standard 1/2" pitch chain and sprocket drive powered by AC or DC electric motor with auxiliary bevel crank. Nordic reels are equipped with the standard welded frame and heavy duty cast bevel gears for reliable performance. Designs are versatile to provide flexibility to meet user requirements for size, capacity, rewind motor and consistency.

RC-3900-31-12-15FF  
↑

**Drive Type:**

**EP** - Electric Motor, 12VDC explosion proof

**BC** - Bevel Crank (standard)

Also available, non-explosion proof 12 or 24 DC, explosion-proof 115 AC, 24 DC. Contact SVI.

Model with Hose	Hose ID (in)	Hose Capacity (ft)	Max PSI	DIMENSIONS (in)			Shipping Weight (lbs)
				Length	Width	Height	
RC-BC2400-21-10-10FF	1	50	1000	21	20	26.5	72
RC-BC2400-25-12-10FF	1	100	1000	25	22	26.5	74
RC-BC2400-25-16-10FF	1	150	1000	25	26	26.5	80
RC-BC2400-25-22-10FF	1	200	1000	25	32	26.5	86
RC-BC3900-25-10-15FF	1-1/2	50	300	25	20	26.5	89
RC-BC3900-25-14-15FF	1-1/2	75	300	25	24	26.5	93
RC-BC3900-31-14-15FF	1-1/2	105	300	31	24	32.5	92
RC-BC3900-31-20-15FF	1-1/2	150	300	31	30	32.5	96
RC-BC3700-25-16-20F2	2	50	300	25	26	26.5	124
RC-BC3700-31-18-20F2	2	100	300	31	28	32.5	124
RC-BC3700-31-24-20F2	2	125	300	31	34	32.5	148
RC-EP5905-39-16-25FI	2-1/2	80	300		39	29	40.5 242
RC-EP5905-39-16-30FI	3	50	300		39	29	40.5 242

\*For electric motor versions of the BC models, add 3" to width shown in above chart.





## Custom Built Reels • Built to Your Specs

Reelcraft's engineered products group custom builds reels to your specifications. Our special engineered products are developed for demanding applications in areas such as marine, military, aviation, hydro-seeding, sewer and well cleaning, offshore oil rigs, robotic cable and much more. We offer flexibility, competitive pricing and a lasting commitment to excellence. For more than 20 years, Reelcraft's engineered products group has produced custom products to meet individualized requirements.

### VERY FEW SIZE AND WEIGHT CONSTRAINTS

Built to meet most extreme size and weight constraints.

### SPECIAL FINISHES / PAINT OPTIONS

Options include galvanized, CARC paint, marine grade epoxy, liquid enamel coat paint and powder coat paint in any color.

### VARIOUS DRIVE TYPES

Manual crank, motorized, spring drive, hand-over-hand and more.

### WIDE RANGE OF PRESSURES

A wide variety of pressure ranges available

### UNIQUE OPTIONS

Hose Boss rewind assist, tensioning bars, multiple fluid paths, level rewinds and much more.

**NO MINIMUM QUANTITIES** - Order from 1 to as many as you need.

Reelcraft's engineered products group custom builds reels to your specifications. Our special engineered products are developed for demanding applications in areas such as marine, military, aviation, hydro-seeding, sewer and well cleaning, offshore oil rigs, robotic cable and much more. We offer flexibility, competitive pricing and a lasting commitment to excellence. For more than 20 years, Reelcraft's engineered products group has produced custom products to meet individualized requirements.

## APPLICATIONS

- Aviation Ground Support Reels
- Firefighting Hose Reels
- Marine Reels
- Robotic Cable Reels
- Truck Tanker Reels
- Boom Hose Reels
- Hydroseeding Reels
- Military Reels
- Jetter Reels
- Ultimate Duty Reels
- Cord / Cable Reels
- LPG Hose Reels
- Offshore Oil Rig Reels
- Storage Reels

## SPECIAL OPTIONS AND CAPABILITES

- Alternate Materials
- Multiple Spools
- Brake Options
- Rewind Systems
- Special Finishes / Paint
- Mounting Brackets & Bases
- Fluid Paths
- Turn-Key Systems
- Motor Types
- Wireless Controls
- Drive Types



Multiple Fluid Paths

Multiple Spools

Turn-Key Solutions

Marine-Grade Epoxy

Sewer/Jetter

Stainless Steel

Fiber Optic Cable



## Reel Accessories • Roller Guides / Brackets / Inlet Assemblies

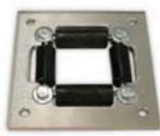
Model	ACCOMMODATES Hose O.D. (mm)	Weight (lbs / kg)	DIMENSIONS											
			A (in / mm)		B (in / mm)		C (in / mm)		D (in / mm)		E (in / mm)		F (in / mm)	
RC-HR1057	.603 (16) - .906 (23)	.25 .12	.875	22.3	3.125	79.4	3.125	79.4	1.6875	42.9	1.6875	42.9	N/A	
RC-HR1059	.250 (6.4) - .625 (15.9)	.25 .12	.625	15.9	3.125	79.4	3.125	79.4	1.6875	42.9	1.6875	42.9	N/A	
RC-HR1145	.603 (16) - .906 (23)	.34 .15	2	50.8	1	25.4	3.75	95.3	2.75	69.9	2.125	54.1	3.125	79.4
RC-S270109	.900(23) - 2.00 (50.8)	5.39 2.44	5.25	133.4	2.375	60.4	12	305	8	204	5	127	10.5	267
RC-600168	.900 (23) - 1.38 (35)	1.75 .34	1.75	44.5	2.0625	27	5.125	130	5.125	130	4	102	4	102



RC-HR1059



RC-HR1145



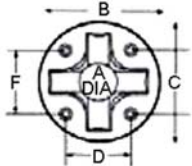
RC-600168



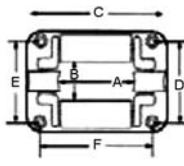
RC-S270109

These four-way roller guide assemblies are for use with reels on cabinet door openings and for similar locations where sharp edges may cut or damage the hose. The four-way design permits pulling or retracting hose at any angle. Model S270109 has nylon rollers mounted on an 11 gauge steel frame with pre-drilled mounting holes.

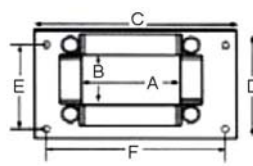
**Note:** A hose bumper should be used with the four-way roller hose guide assemblies to prevent damage to rollers and nozzles. See chart on page 15.



RC-HR1057 • RC-HR1059



RC-HR1145



RC-S270109 • RC-600168

## Additional Accessories



RC-600608

### 340° Pivot Base

Aligns reel to the direction of hose or cord run. May be mounted with reel upright or hanging. Weight 10 lbs. (5kg).

**Note:** Use if hoses or cords are pulled a more than 45°.

For Reel Series	Part #
RT / 4000 / 5000 / 5005 / 7000	RC-600608
80000 / D80000 / 30006	RC-600801
30012	RC-600801-12



RC-600370

### Top Mounting Channels and Beam Clamps

**RC-600370:** Top channel and beam clamps for one reel

**RC-600295:** Top channel and beam clamps for two reels

For mounting Series 4000 through 7000 reels to I-beam or overhead support. Mounting channels can be mounted end to end to mount three or more reels.

(See Adaptor Assembly)



RC-600295



RC-600230

### RC-600230 Adaptor Assembly

Channels are designed to accommodate Series 7000 reels. Adaptor # RC-600230 permits the mounting of Reelcraft Series RT, 4000, 5000, 5005 and electric cord reels on mounting channel. Used with top channels and beam clamps only.

RC-600992



### Wall-Mounted Universal Swing Bracket

Bracket will pivot approximately 180°. All steel construction with a durable baked on powder coat finish. Weight 6 lbs. (3 kg).

**Note:** Use if hoses or cords are pulled at more than 45°

**Note:** Not for overhead mounting

For Reel Series	Part #
RT	RC-600992
4000 / 5000	RC-600993
RT / 4000 / 5000 / 5005 / 7000	RC-600626
80000 / D80000 / DP7000	RC-600980



RC-600626



## Inlet Hose Assemblies

A flexible hose connection must be used between the hose reel inlet and the source of supply to prevent possible misalignment and binding or warranty is void. Please furnish the following information when ordering: Part number, product and pressure to be handled. Other sizes available, as well. NOTE: Swivel fittings are recommended to protect hose during installation.

SVI Part #	Hose I.D. (in / mm)	Hose O.D. (in / mm)	Length (ft / m)	End Fittings (in)	Pressure (psi / bar)	Weight (lbs / kg)
<b>LOW PRESSURE - Air and Water - PVC Nylon Braid</b>						
RC-S601024-2	3/8 10	.600 15	2 .61	3/8 x 3/8 NPTF (M)	300 21	.54 .24
RC-S601020-2	1/2 13	.750 19	2 .61	1/2 x 1/2 NPTF (M)	300 21	.70 .32
RC-601026-2	3/4 19	1.075 27	2 .61	3/4 x 3/4 NPTF (M)	250 17	1.50 .68
RC-601034-3	3/4 19	1.075 27	3 .91	3/4 x 3/4 NPTF (M)	250 17	1.72 .75
RC-601026-7	3/4 19	1.075 27	7 2.13	3/4 x 3/4 NPTF (M)	250 17	3.00 1.36
RC-S601027-2	1 27	1.375 35	2 .61	3/4 x 1 NPTF (M)	300 21	1.72 .78
RC-601027-5	1 27	1.375 35	5 1.52	3/4 x 1 NPTF (M)	300 21	3.25 1.47



RC-S601024-2



RC-S601027-2

## Adjustable Hose Bumpers

Adjustable hose bumpers are solid molded rubber assuring a long life and nonslip grip. Hose bumpers allow the desired length of hose to be permanently stored outside the reel. Hose bumpers are included on the reels purchased with hose. Reels purchased without hose do not include the hose bumper. When ordering, advise the part number, reel model and the hose I.D. and O.D. **NOTE: To order hose bumper with stainless steel hardware, change part number prefix from HR to HS.**



2-HR1004-3



8-HR1004-3



600521



4-HR1005

For Reel Series	SVI Part #	Hose O.D. (dia A) in (mm)	Hose I.D. (in / mm)	Dia. B-C-E (in / mm)	Dia. D (in / mm)	Weight (lbs / kg)
4000 / 5000 / RT400 / 3100 / 6000 / L4500 / L5000 / DP	RC-1-HR1004-A	.438 (11) - .625 (16)	1/4 6	2.5 64	1.25 32	.24 .10
4000 / 5000 / D8000 / RT400 / RT600 / 6000	RC-1-HR1004	.625 (16) - .749 (19)	3/8 10	2.5 64	1.25 32	.25 .11
7000 / 80000 / E8000 / 3100 / RT800 / 5000 / D80000 / DP	RC-1-HR1004-3	.625 (16) - .749 (19)	3/8 10	3 73	1.25 32	.24 .10
5000 / A5005 / 7000 / 80000 / D8000 / E80000 / RT800 / DP	RC-2-HR1004-3	.750 (19) - 1.05 (27)	1/2 or 3/8 13 or 10	3 73	1.25 32	.23 .10
7000 / 8000 / D8000 / 80000 / GC7000 / F7000 / F80000 / L7000 / DGM	RC-3-HR1004-3	1.06 (27) - 1.38 (35)	3/4 19	3 73	1.25 32	.32 .14
TW5000 / TW7000 / 3100T / TW80000 / TWD80000	RC-8HR1004-3	.530 (13) twin	1/4 twin 6	3 73	1.25 32	.24 .10
TH8000 / TW80000 / 3100T / TH7000 / TW8000	RC-600521	.680 (17) twin	3/8 twin 10	3.5 89	2 51	.45 .20
3100T / 4800T / TH80000	RC-600522	.810 (21) twin	1/2 twin 13	3.5 89	2 51	.49 .22
D9000 / E9000 / 3100 / 4800	RC-2-HR1005	.750 (19) - 1.05 (27)	1/2 13	3.5 89	2.875 73	.95 .43
D9000 / E9000 / FE9000 / 3100 / 4800 / SD	RC-3-HR1005	1.06 (27) - 1.38 (35)	3/4 19	3.5 89	2.875 73	.95 .43
D80000 / D8000 / D9000 / E9000 / FD9000 / FE9000 / 3100 / 4800 / SD	RC-4-HR1005	1.39 (35) - 1.55 (39)	1 25	3.5 89	2.875 73	.81 .36
FE9500 / FF9500 / 4800	RC-S600547-1	1.55 (39) - 1.75 (44)	1-1/4 32	3.75 95	2.875 73	.70 .31
FE9600 / FF9600 / 4800	RC-S600547-2	1.75 (44) - 2.03 (52)	1-1/2 38	3.75 95	2.875 73	.57 .25



## Replacement Hose Assemblies PARTIAL LIST

SVI Part #	I.D. (in)	O.D. (in)	Length (ft)	Pressure (psi)	End Fittings in - NPFT (M)	Wgt. (lbs)
<b>LOW PRESSURE - Air and Water - PVC Nylon Braid</b>						
RC-601001-20	1/4	.475	20	300	1/4 x 1/4	2.60
RC-601001-25	1/4	.475	25	300	1/4 x 1/4	3.00
RC-601001-35	1/4	.475	35	300	1/4 x 1/4	3.20
RC-601001-50	1/4	.475	50	300	1/4 x 1/4	5.00
RC-601013-15	3/8	.600	15	300	1/4 x 1/4	3.10
RC-S601013-25	3/8	.600	25	300	1/4 x 1/4	4.50
RC-S601013-35	3/8	.600	35	300	1/4 x 1/4	4.70
RC-S601013-50	3/8	.600	50	300	1/4 x 1/4	6.00
RC-601014-40	3/8	.600	40	300	1/4 x 1/2	6.00
RC-601014-100	3/8	.600	100	300	1/4 x 1/2	15.00
RC-601017-50	3/8	.600	50	300	1/4 x 1/2	6.00
RC-601017-70	3/8	.600	70	300	1/4 x 1/2	7.90
RC-601015-15	3/8	.600	15	300	3/8 x 1/2	3.00
RC-601015-50	3/8	.600	50	300	3/8 x 1/2	6.50
RC-601015-75	3/8	.600	75	300	3/8 x 1/2	8.00
RC-601015-100	3/8	.600	100	300	3/8 x 1/2	14.00
RC-601021-30	1/2	.750	30	300	3/8 x 1/2	6.30
RC-601021-35	1/2	.750	35	300	3/8 x 1/2	7.40

SVI Part #	I.D. (in)	O.D. (in)	Length (ft)	Pressure (psi)	End Fittings in - NPFT (M)	Wgt. (lbs)
<b>LOW PRESSURE - Air and Water - PVC Nylon Braid</b>						
RC-601021-50	1/2	.750	50	300	3/8 x 1/2	10.50
RC-601022-35	1/2	.750	35	300	1/2 x 1/2	6.50
RC-601022-50	1/2	.750	50	300	1/2 x 1/2	10.50
RC-601035-75	1/2	.750	75	300	1/2 x 1/2	13.70
RC-601022-100	1/2	.750	100	300	1/2 x 1/2	18.00
RC-601026-20	3/4	1.075	20	250	3/4 x 3/4	5.90
RC-601026-25	3/4	1.075	25	250	3/4 x 3/4	7.70
RC-601026-30	3/4	1.075	30	250	3/4 x 3/4	9.00
RC-601026-40	3/4	1.075	40	250	3/4 x 3/4	12.00
RC-601026-50	3/4	1.075	50	250	3/4 x 3/4	15.00
RC-601026-75	3/4	1.075	75	250	3/4 x 3/4	18.75
RC-601026-100	3/4	1.075	100	250	3/4 x 3/4	22.60
RC-601026-150	3/4	1.075	150	250	3/4 x 3/4	37.00
RC-601026-200	3/4	1.075	200	250	3/4 x 3/4	58.00
RC-601027-30	1	1.375	30	250	3/4 x 1	13.50
RC-601027-40	1	1.375	40	250	3/4 x 1	17.70
RC-601027-45	1	1.375	45	250	3/4 x 1	20.00
RC-601027-50	1	1.375	50	250	3/4 x 1	21.80

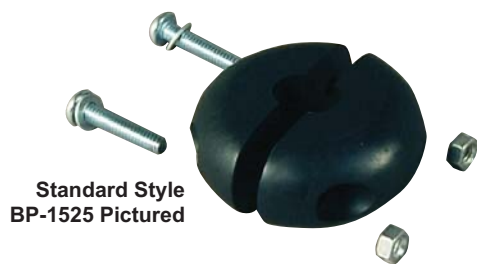
**CAUTION:** Be sure working pressure required does not exceed above ratings. Misapplication can result in serious operator injury.  
**NOTE:** Advise product to be handled, maximum temperature and pressure fitting size or sizes when ordering.

**CAUTION:** Be sure working pressure required does not exceed above ratings. Misapplication can result in serious operator injury.  
**NOTE:** Advise product to be handled, maximum temperature and pressure fitting size or sizes when ordering.

### SVI ALSO OFFERS:

## Two Piece "Donut Style" Hose Bumpers / Hose Stops

Designed to provide slip-free performance on air, water, grease and oil hose. Two styles are available. L-style are the larger, wider style. All hardware is included.



Standard Style  
BP-1525 Pictured



Wide-Style  
BP-1526L Pictured

#### Standard

**BP-1525** for 3/8" ID - 5/8" to 23/32" OD hose

#### Wide-Style (L-Style)

**BP-1527L** Wide-Style for 1/4" ID Hose

**BP-1525L** Wide-Style for 3/8" ID Hose

**BP-1526L** Wide-Style for 1/2" ID Hose

**TERMS AND CONDITIONS OF THE  
SALES ORDER  
FOR SVI INTERNATIONAL, INC.**

1. **GENERAL.** The terms and conditions of sales order outlined herein shall apply to the sale by SVI INTERNATIONAL, INC. (hereinafter referred to as "Company") of the items described on the facing page (hereinafter referred to as "Merchandise") to Purchaser.
2. **DELIVERY.** Delivery shall be deemed to be complete when the Merchandise has been shipped F.O.B. Company's plants in DeKalb, Illinois, Montclair, California; and Hanover, Maryland ("Company's plants"). Shipments are subject to delays from causes or contingencies beyond the reasonable control of the Company. When otherwise not specified, shipments will be made in standard containers via carrier which, in the judgment of the Company, will result in the most practical method. Title and right of possession will pass to the Purchaser upon receipt by the carrier at the shipping point. If a customer of the Company should specify a specific carrier's method of shipment (i.e. UPS Next Day Air) and that carrier does not perform to the customer's expectations, freight credit to a customer's account will not be issued unless the Company can first obtain a credit.
3. **RISK OF LOSS.** Identification of the Merchandise under Uniform Commercial Code (hereinafter referred to as "UCC") Section 2-501 shall take place at the moment of shipment F.O.B. Company's plants. Risk of loss shall pass to the Purchaser when the Merchandise is shipped from the Company's plants.
4. **TITLE.** Title to the merchandise shall transfer to the Purchaser when the Merchandise is shipped from the Company's plants.
5. **WARRANTIES.** The Company guarantees its products to be free from defects in workmanship and raw materials for a period of one year from date of purchase. THIS WARRANTY IS EXPRESSLY IN LIEU OF ANY AND ALL WARRANTIES EXPRESS OR IMPLIED. COMPANY DOES NOT WARRANT THE MERCHANDISE IS MERCHANTABLE OR FIT FOR ANY PARTICULAR PURPOSE. Company's liability for breach of the terms of this Agreement, including any warranty, is limited to either refund of the invoice price of the Merchandise or at Company's option, replacement of the Merchandise free of charge, including transportation charges but not including the cost of labor. Purchaser has not relied on any statement or upon the conduct of Company with respect to the prospective use of the merchandise. Company shall not be liable for and Purchaser waives any and all claims for any loss or damage, directly or indirectly, arising from the use of the Merchandise and for punitive, incidental or consequential damages, including, but not limited to, damages to property, for loss of use, loss of time, loss of profit or loss of income. The Company does not authorize the sale of our products under any other warranty, expressed or implied. **Please note:** Electrical components and cylinder or shaft seals are not covered under warranty.
6. **SETOFF.** All claims for money due or to become due from the Company shall be subject to deduction by the Company for any setoff or counterclaim arising out of this or any other claims of the Company or its affiliated companies, whether such setoff or counterclaim arose before or after any assignment by Purchaser.
7. **INDEMNIFICATION.** Purchaser agrees to indemnify the Company and hold it harmless from and against all claims, liability, loss, damage or expense, including reasonable counsel fees, arising from or by reason of any modifications or alterations made by Purchaser. If a customer of the Company modifies or alters any part, in any manner whatsoever, or uses any part in departure from recommended performance specifications, said customer agrees to indemnify and hold the Company harmless from and against all liability and expenses based on damage to property or injury to or death of any person arising out of or attributable to such modified or altered part. Further, the Company will not accept any such modified or altered part for credit to a customer's account.
8. **FREIGHT POLICY.** Freight charges are prepaid and added to invoice or collect FOB shipping point. Note: All customers are responsible for all carrier shipping costs, fees, surcharges, etc. including order refusal and return fees.
9. **RETURN POLICY.** To return a part for credit or inspection, Purchaser must first contact our Main Office in Illinois, to obtain a Return Merchandise Form. Once Purchaser has obtained this form, the parts can be returned freight prepaid only. The Return form must be included with the shipment. Parts returned to the Company without the approved form will be returned freight collect to the shipper or refused. Returns must be initiated within 30 days of the invoice date. The Return Forms are valid for 30 days, from the date of issue. All Returns are subject to restocking charges. Return parts brought into our remote warehouses, will not be accepted by our personnel, without a Return Merchandise Form from the Main Office. Parts which have been used in any way or manner, including any installation or incorporation into a lift, hoist, or other equipment, shall NOT be eligible for return whether or not a Return form has been assigned. **Please note:** Electrical parts or components are not returnable for credit. This includes all switches, pushbuttons, relays, electric motors, capacitors, fuses, solenoids, power units with wiring issues or any other electrical items. Custom, built to order, special order, and non-stocked genuine parts are non-returnable.
10. **RESTOCK CHARGE.** Returns are subject to a restocking charge. Refusals are subject to the same restocking charge plus the cost of outbound and return freight charges and/or fees incurred by the Company due to shipment refusal.
11. **PRICES AND PAYMENTS.** All prices are subject to change without notice. All prices are F.O.B. shipping point. The Company standard terms are net 30 days, C.O.D. company check, C.O.D. cash, VISA, MasterCard, Discover or American Express. However, if in the judgment of the Company, the financial condition of the Purchaser at any time does not justify shipment according to standard terms of payment, the Company may require full or partial payment in advance.
12. **INTERPRETATION.** This sales order is intended by the parties as a complete and exclusive statement of the terms of their agreement. It supersedes all prior agreements, written or oral. No course of prior dealings between the parties and no usage of the trade shall be relevant to supplement or explain any terms used in this sales order. Acceptance or acquiescence in a course of performance rendered under this purchase order shall not be relevant to determine the meaning of this sales order even though the accepting or acquiescing party has knowledge of the nature of the performance and opportunity for objection. Whenever a term defined by the UCC is used in this sales order the definition contained in the UCC shall control.
13. **MODIFICATION.** This sales order can be modified or rescinded only by a writing signed by both parties.
14. **WAIVER.** No claim or right arising out of a breach of this sales order can be discharged in whole or in part by a waiver or renunciation of the claim or right unless such waiver or renunciation is supported by consideration and is in writing signed by the aggrieved party.
15. **ASSIGNMENT.** No right or interest in this sales order shall be assigned by either party without the written consent of the other and no delegation of any obligation owed, or of the performance of any obligation by either the Company or Purchaser shall be made without the written consent of the other party. Any attempted assignment or delegation not made in conformity with this paragraph shall be wholly void and totally ineffective for all purposes.
16. **TIME TO PERFORM AND BRING ACTION.** Time is of the essence of this sales order. Any action for breach of this sales order shall be commenced within two (2) years after the cause of action has accrued. Any party who loses any litigation shall reimburse the other party for costs including reasonable attorney's fees. The exclusive jurisdiction for any legal action shall be the Circuit Court of DeKalb County, Illinois.
17. **APPLICABLE LAW.** This sales order shall be governed by the UCC of Illinois as effective and in force on the date of this sales order.