



Hosted by



**LEARNING AND LEGACY** THE ROLE OF EDUCATION IN CREATING HEALTHIER, HAPPIER CITIES  
EAUC 20th Annual Conference 25th - 26th May 2016

# Data Centre Anywhere

## Micro Data Centres



Estates and  
Operations

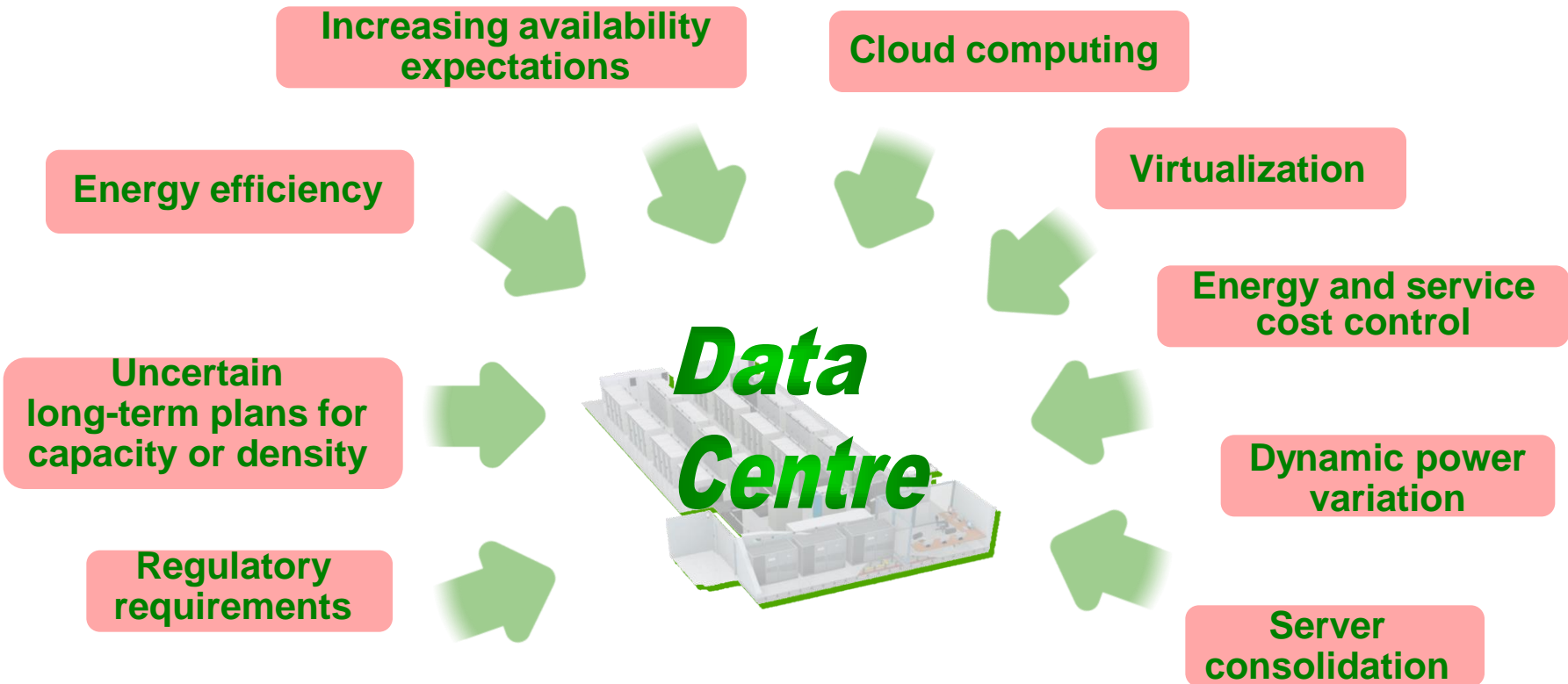


# Increasing Pressure

*... on data centre planning and operation*



Estates and  
Operations



*In response ...*

Providers are continuing to improve new ways to plan, design, install, manage, and maintain data centres

# Increasing Opportunity

... for data centre planning and operation



Estates and  
Operations



Increasing availability  
expectations

Cloud computing

Energy efficiency

Virtualization

Uncertain  
long-term plans for  
capacity or density

Energy and service  
cost control

Regulatory  
requirements

Dynamic power  
variation

**Data  
Centre**

Server  
consolidation

*because...*

Increased funding opportunities, higher priority to business, dynamic technology advances, new field of expertise

# Size of the Opportunity

*A case study – MMU All Saints Data Centre*



Estates and  
Operations



...which reduces  
carbon emissions...

The new data centres reduce  
our annual carbon footprint by **3%**

591 tonnes less CO<sub>2</sub> every  
year. That's a saving of  
**5,534 tonnes**  
of carbon over the  
project's lifetime

- 50% Efficiency Gains
- Release of space



IT Rooms

...and saves  
us money

Total saved over  
the project's lifetime:



Funded by Salix

# Considering the Opportunity

*... where to start?*



Estates and  
Operations



## Data Centre Space

Space is one of the first things that will need to be considered when faced with the challenge of improving the IT facility.

Location options may be one or more of the following;

- New build
- Outsourcing to a hosting company
  
- Upgrading existing to a more power and space efficient solution (live)  
Thermal containment / Upgrade to more efficient components / Virtualisation, etc
  
- Finding a new space within *or around* the estate for a more power and space efficient solution (migrate) – prefabricated?  
Virtualisation / integral or independent of building infrastructure / risk mitigation

***Who will decide?...***

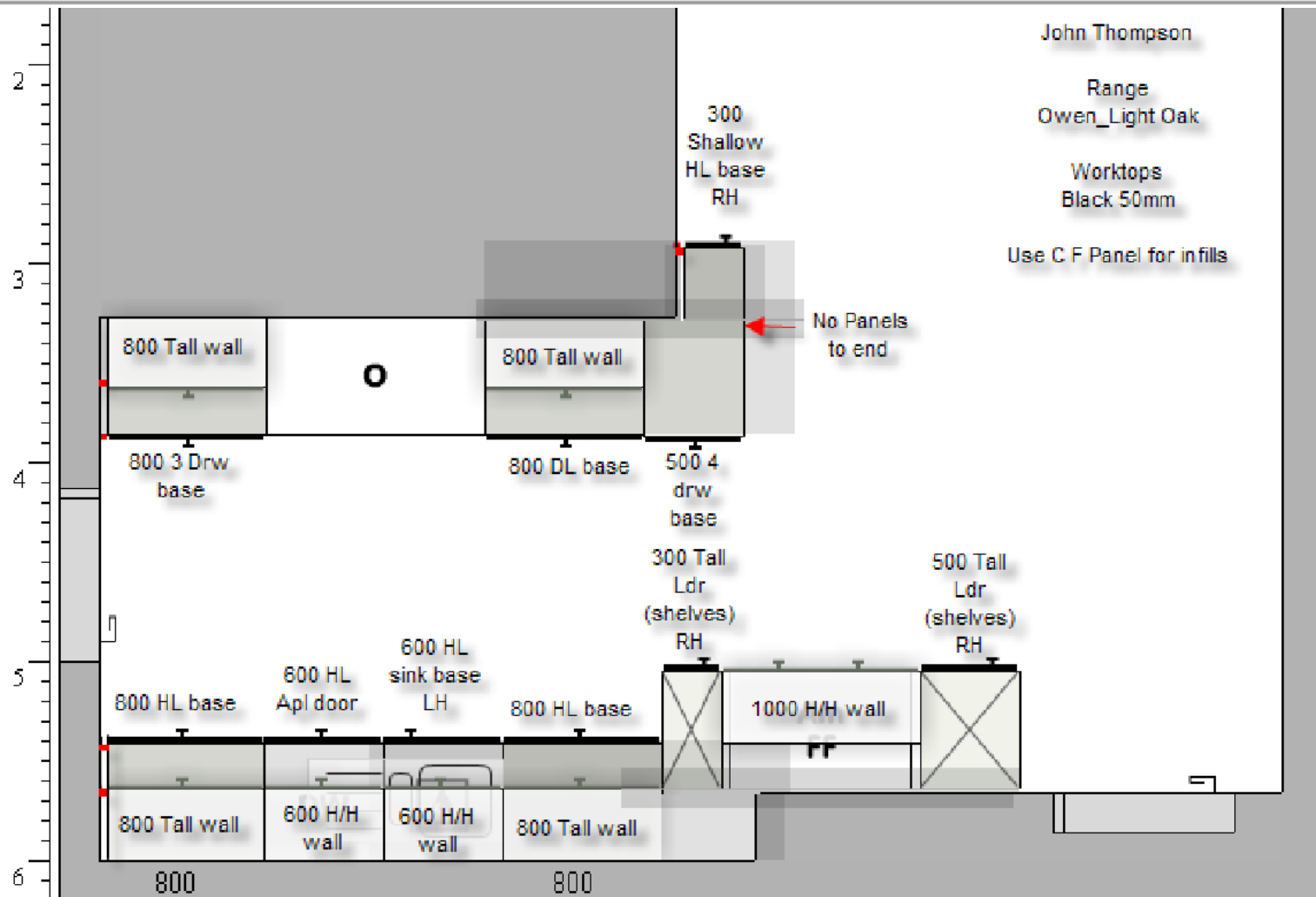
**Feasibility study? Consultants? In-house knowledge and expertise? (connections- Jisc guide)**

# Planning Tools

... *tried and tested*



Estates and  
Operations



**20-30 minutes to create speculative design**

# Walk Round

*Visualising possibilities*



Estates and  
Operations



**20-30 minutes to create speculative design**

# Planning Tools

... *tried and tested*



Estates and  
Operations



20-30 minutes to create speculative design

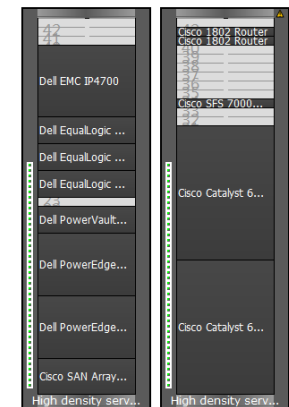
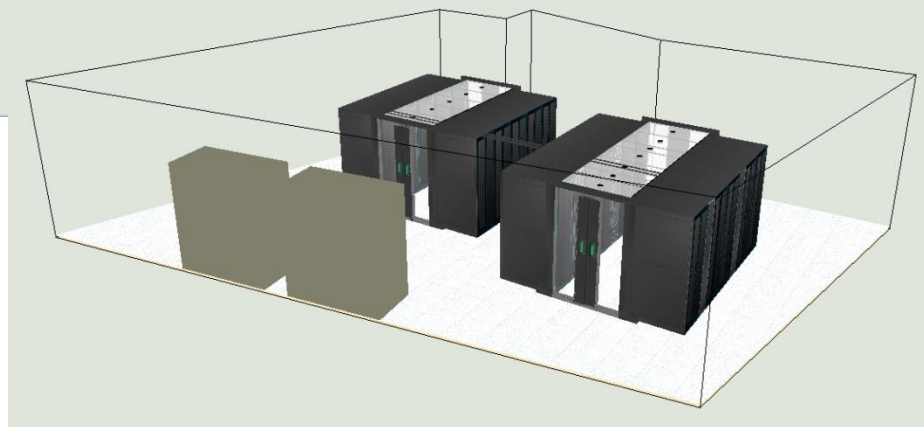
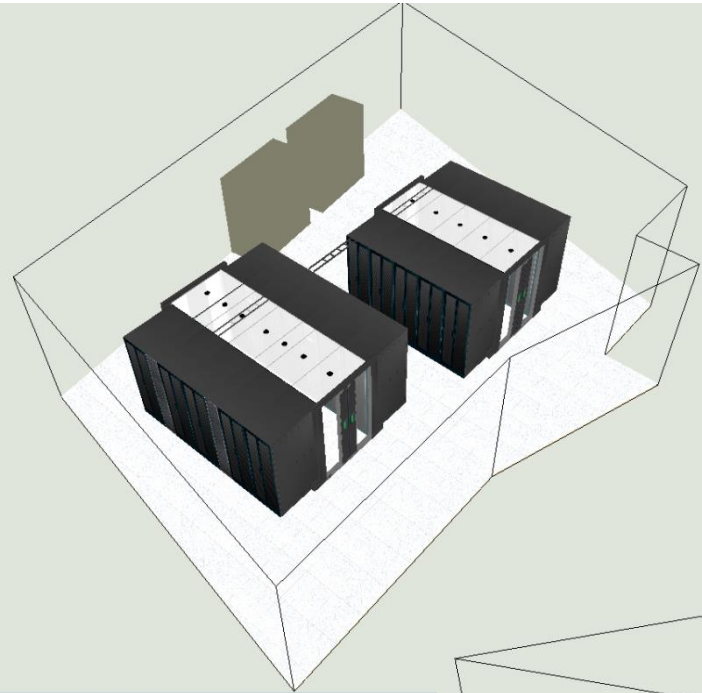


# Walk Round

*Visualising possibilities*



Estates and  
Operations



**Improved communication to stakeholders**

# Itemised

*How many, how much?*



**Estates and  
Operations**



## BOM & CTO Report

| Details                     |                |   |             |  |              |          |       |             |  |
|-----------------------------|----------------|---|-------------|--|--------------|----------|-------|-------------|--|
| SKU Type                    | Quantity       | Item  | Description |  |              |          |       |             |  |
| ISXD Design 1<br>Type: ISXD |                |   |             |  |              |          |       |             |  |
| <input type="checkbox"/>    | FG             | 20  | AR3100      | NetShelter SX 42U 600mm Wide x 1070mm Deep Enclosure with Sides Black  |              |          |       |             |  |
| <input type="checkbox"/>    | FG             | 10  | AP7557      | Rack PDU, Basic, Zero U, 11 kW, 230V, (36) C13 & (6) C19   |              |          |       |             |  |
| <input type="checkbox"/>    | FG             | 10  | AP8858EU3   | Rack PDU 2G, Metered, ZeroU, 16A, 230V, (18) C13 & (2) C19, IEC309 Cord  |              |          |       |             |  |
| <input type="checkbox"/>    | PTO            | 3   | AR8164AE    | <b>Data Cables</b>   |              |          |       |             |  |
| <input type="checkbox"/>    | FG             | 2   | AR8177BL    | <b>Logical Name:</b> R/B-1<br><b>Name:</b> Switch 10<br><b>U Position:</b> 40<br><b>Description:</b> APC 24 Port 10/100 Ethernet Switch<br><b>Stage:</b> NEW |              |          |       |             |  |
| <input type="checkbox"/>    | Purchased SKU  | 20  | AR8561      |  |              |          |       |             |  |
| <input type="checkbox"/>    | Purchased SKU  | 4   | AR8580      |  |              |          |       |             |  |
| <input type="checkbox"/>    | Purchased SKU  | 16  | AR8162AF    |  |              |          |       |             |  |
| Qty                         | Part Number    | Description   |             |  |              |          |       |             |  |
| 9                           | 3827GY-10      | APC CAT 5 UTP 568B PATCH CABLE, GREY, RJ45 MALE TO RJ45 MALE, 14 PAIR, 24 AWG, STRANDED, PVC, 10 FT |             |  |              |          |       |             |  |
| 3                           | 3827GY-15      | APC CAT 5 UTP 568B PATCH CABLE, GREY, RJ45 MALE TO RJ45 MALE, 4 PAIR, 24 AWG, STRANDED, PVC, 15 FT  |             |  |              |          |       |             |  |
| 1                           | 3827GY-25      | APC CAT 5 UTP 568B PATCH CABLE, GREY, RJ45 MALE TO RJ45 MALE, 4 PAIR, 24 AWG, STRANDED, PVC, 25 FT  |             |  |              |          |       |             |  |
| 2                           | 3827GY-30      | APC CATEGORY 5 UTP 568B PATCH CABLE, GREY, RJ45M/RJ45M  |             |  |              |          |       |             |  |
| 1                           | 3827GY-35      | APC CATEGORY 5 UTP 568B PATCH CABLE, GREY, RJ45M/RJ45M  |             |  |              |          |       |             |  |
| 2                           | 3827GY-40      | APC CATEGORY 5 UTP 568B PATCH CABLE, GREY, RJ45M/RJ45M  |             |  |              |          |       |             |  |
| 1                           | 3827GY-50      | APC CAT 5 UTP 568B PATCH CABLE, GREY, RJ45 MALE TO RJ45 MALE, 4 PAIR, 24 AWG, STRANDED, PVC, 50 FT  |             |  |              |          |       |             |  |
| 2                           | 3827GY-100     | APC CAT 5 UTP 568B PATCH CABLE, GREY, RJ45 MALE TO RJ45 MALE, 4 PAIR, 24 AWG, STRANDED, PVC, 100 FT |             |  |              |          |       |             |  |
| Port                        | Connected From | Location  | Stage       | Data Cables  | Connected To | Location | Stage | # Extenders |  |
| 1                           | AP9465         | R/B-1   | NEW         | 3827GY-10  | AP9224110    | R/B-1    | NEW   | 0           |  |
| 2                           | AP9224110      | R/B-1   | NEW         | 3827GY-10  | AP8858EU3    | R/B-1    | NEW   | 0           |  |
| 3                           | AP9224110      | R/B-1   | NEW         | 3827GY-10  | AP8858EU3    | R/B-3    | NEW   | 0           |  |
| 4                           | AP9224110      | R/B-1   | NEW         | 3827GY-10  | NBRK0451     | R/B-3    | NEW   | 0           |  |
| 5                           | AP9224110      | R/B-1   | NEW         | 3827GY-10  | AP9224110    | R/B-2    | NEW   | 0           |  |

**Drill down into detail / Connections / Product Specs**

# Quick Decisions

*... saving time and money*



Estates and  
Operations



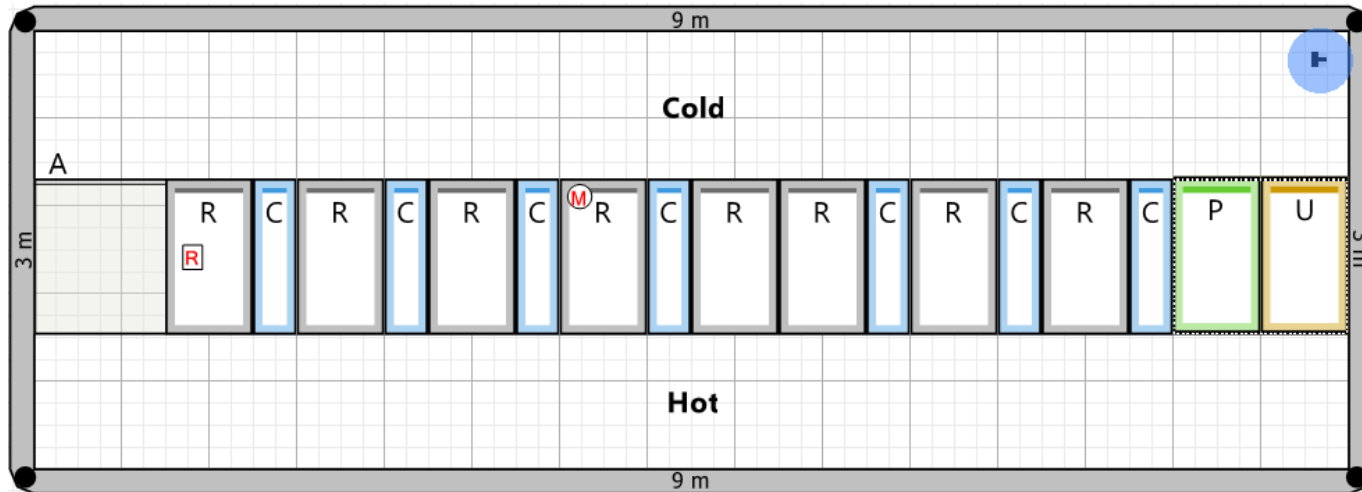
Seeing the potential


# Maximising Potential

... products to solutions



Estates and  
Operations



- P = Service Bypass and PDU
- U = UPS
- R = Rack
- C = In Row Cooling Unit
- M&R = Central Management System & NetBotz
-  = Camera
- A = row references

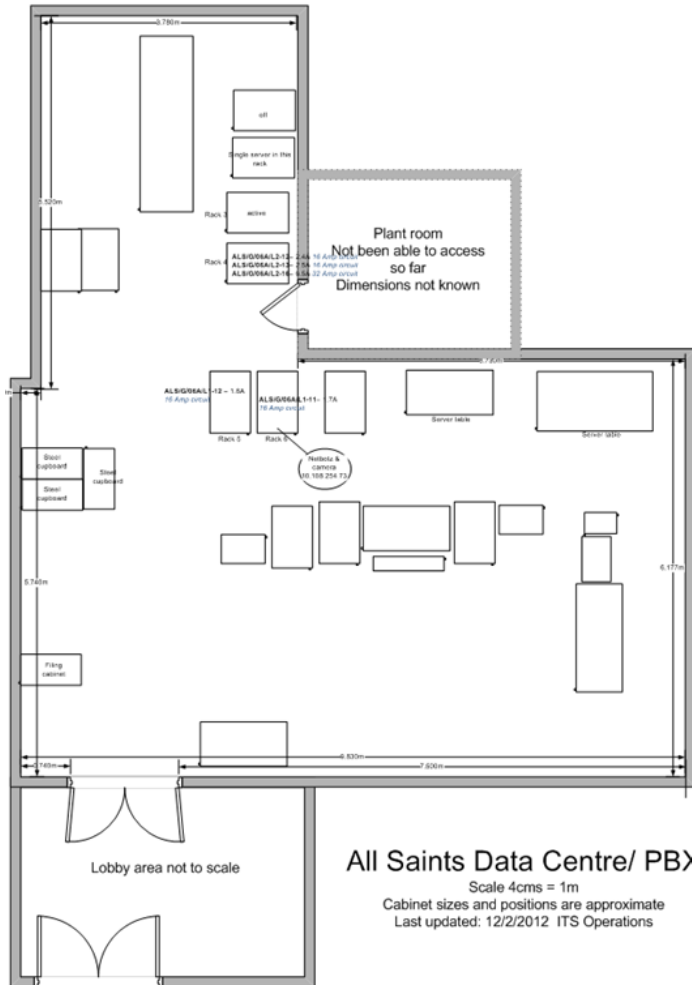
Not to scale:  
600mm x 600mm grid

Quick and easy speculative designs

# MMU Case Study



Estates and  
Operations

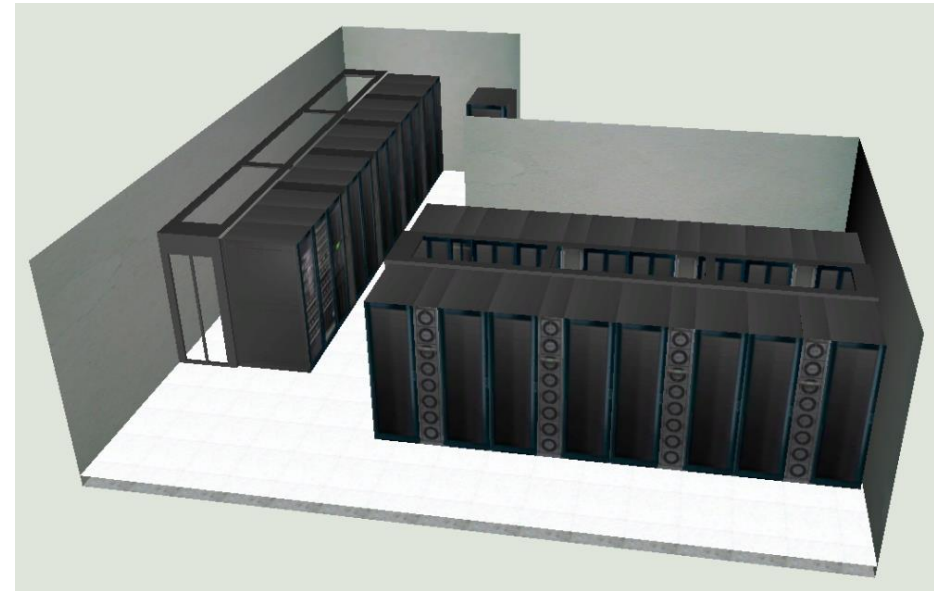


Old PABX room with live services to remain operational

# MMU Case Study



Estates and  
Operations



The best of many not so perfect options

# MMU Case Study



Estates and  
Operations



**External plant**

# MMU Case Study



Estates and  
Operations



**Taken 4% off overall MMU target reduction of 25%**



# Next Step in Modularity



Estates and  
Operations



## Modular Data Center

- The “system” approach to design and construction
- Improves reliability
- Decreased installation time and design effort
- Grow infrastructure in whitespace with demand

## Prefabricated Data Center

- Modularity in larger building blocks.
- Pre-assembled systems, delivered on-site, factory tested.
- System-optimized designs with onboard management systems.
- Grow entire infrastructure with demand
- Quick installation, reduced commissioning time

# Introducing the Prefabricated Multi Modular Solution



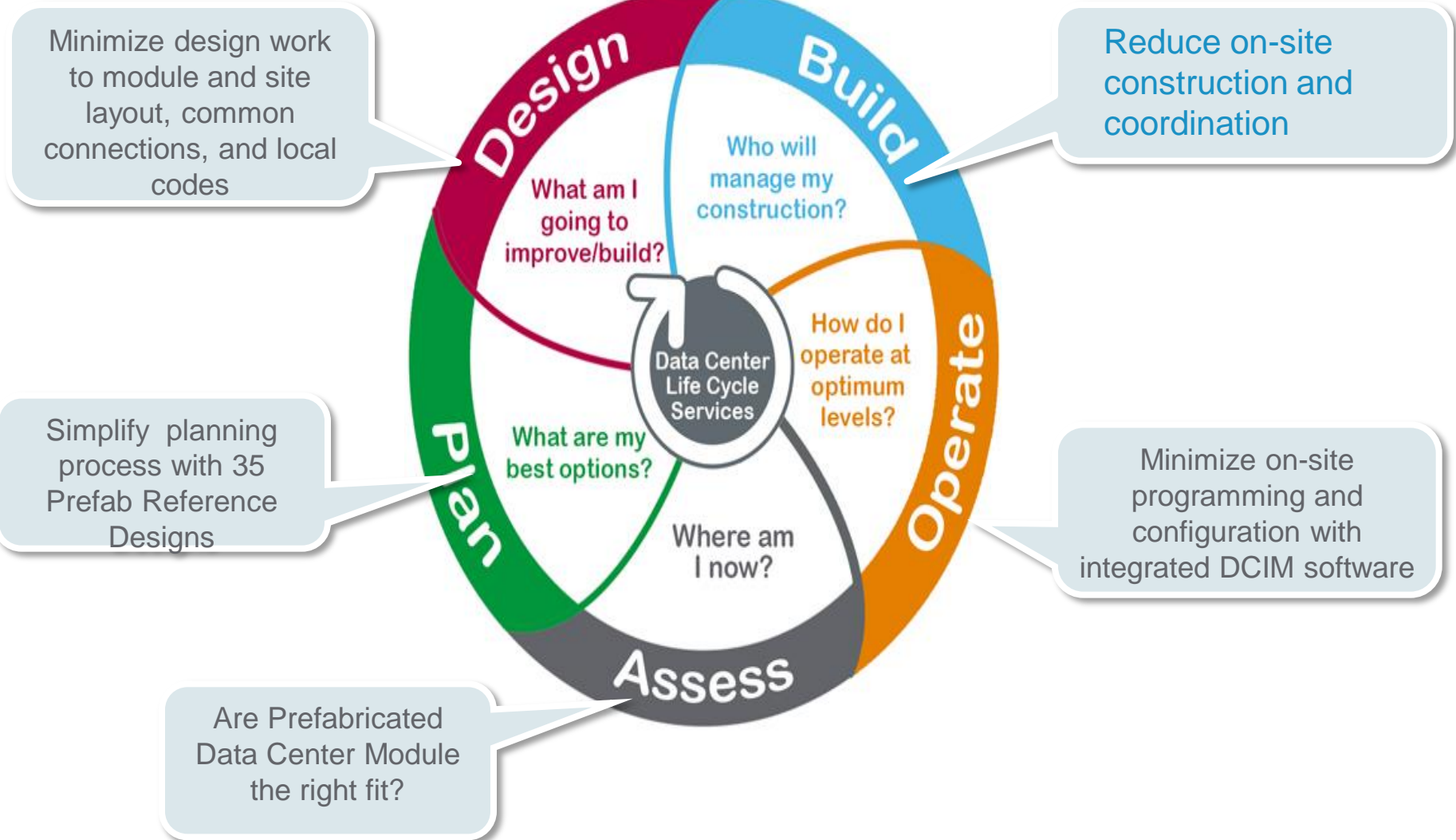
Estates and  
Operations



# Simplify Lifecycle Services with Prefabrication



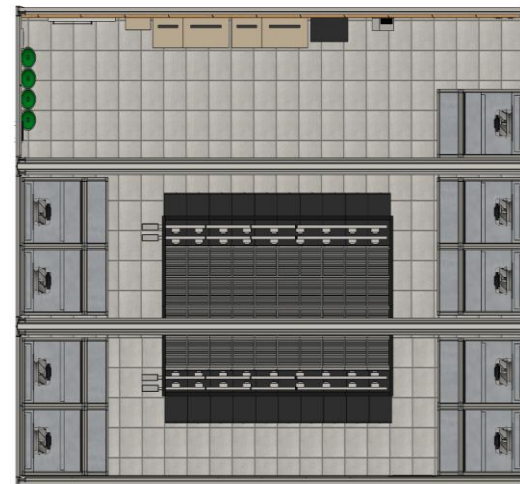
Estates and Operations



# Conceptual Design Solution Layouts and 3Ds



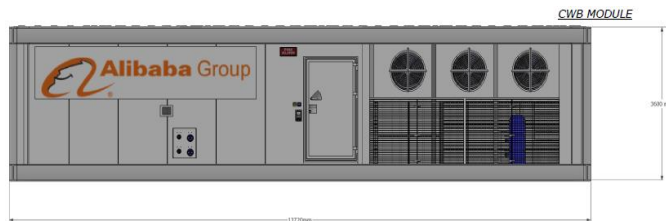
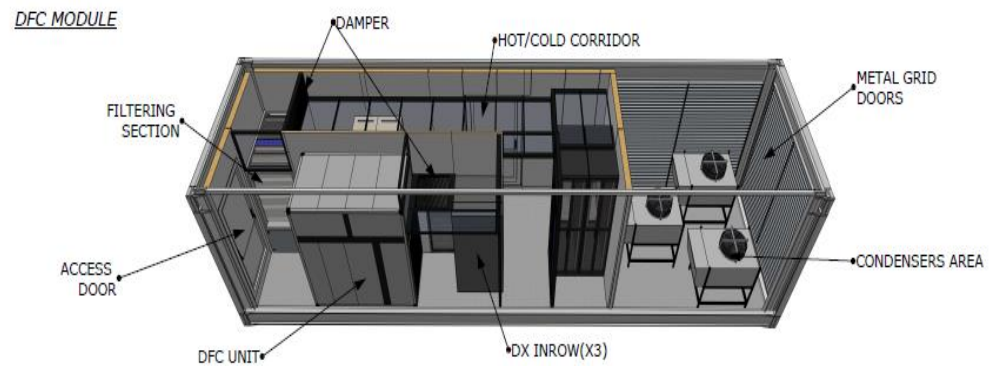
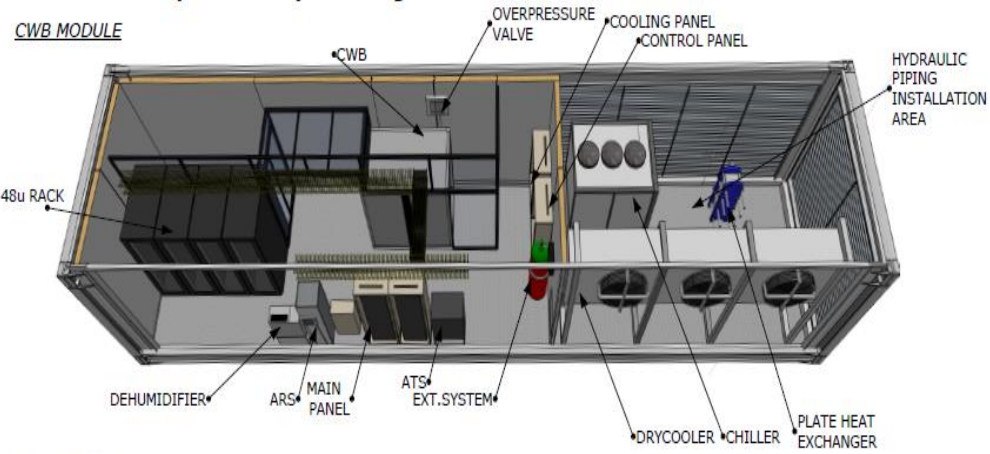
Estates and  
Operations



# Conceptual Design Solution Layouts and 3Ds



Estates and  
Operations



# Common Applications where Prefabrication Adds Value



Estates and  
Operations



## Scalable Solutions for Large Scale Deployments



## Quick Deploy, Pre-Engineered Solutions for Education



# What is a Prefabricated Data Centre Module



Estates and  
Operations



- > A prefabricated modular data centre can be defined as a data centre that is made up of at least one pre-engineered, factory-integrated, and pre-tested assembly of subsystems that have traditionally been installed separately onsite
  
- > Prefabricated Data Centers are further defined by according to their
  - > Function: Power, Cooling, IT
  - > Form Factor: ISO Container, Enclosure, Skid-Mounted
  - > Configuration: Fully-Prefabricated, Semi-Prefabricated

# SmartBunkers for Distributed IT



Estates and  
Operations



## SmartBunker SX

Traditional for IT rooms



## SmartBunker CX

Optimized for office environments



## SmartBunker FX

Industrial Environments

### 24 and 42U

- > 3 or 5kVA UPS
- > Netbotz environmental monitoring
- > 1 Switched Rack PDUs
- > Passive cooling

### 24U and 38U

- > 3 or 5kVA UPS
- > Netbotz environmental monitoring
- > 1 Switched Rack PDUs
- > Sound proofing
- > Fan-assisted ventilation

### 23U and 42U

- > 5 and 8kVA UPS
- > Electrical Input panel
- > Netbotz environmental monitoring
- > 1 Switched Rack PDUs
- > Active DX cooling solutions
- > Thermal insulation
- > Sealed enclosure



# SmartBunker CX Features and Components



Estates and  
Operations



Superior sound proofing on all interior surfaces. Clean, decorative exterior to match office decor

Fire suppression



Security and Environmental Monitoring

- > Surveillance Cameras
- > Alarm beacon
- > Temp. & Hum. sensors
- > Smoke detector
- > Leak Rope Sensor



DCIM software for remote management and real-time monitoring



UPS with remote management



Metered rack PDU with remote monitoring

Fan-assisted cooling



IT equipment can be installed in an office space without the cost of building a dedicated IT room

# SmartBunker FX Features and Components



Estates and  
Operations



StruxureWare Data Center Expert software for remote management and real-time monitoring



Multi-point locking door and Netbotz Rack Access proximity card locking system



Fire-rated and sealed cable entries



UPS with remote management



Security and Environmental Monitoring

- > Surveillance Cameras
- > Alarm beacon
- > Temp. & Hum. sensors
- > Smoke detector
- > Leak Rope Sensor



Switched and metered rack PDU with remote monitoring



InRow self-contained, active DX cooling with monitoring, controls, and display

- > Superior physical protection with heavy gauge steel construction
- > Thermally Insulated walls keep cold air in and hot air out
- > Wall construction provides superior sound attenuation
- > Front and rear access with 180° doors

# Micro Data Centres



Estates and  
Operations

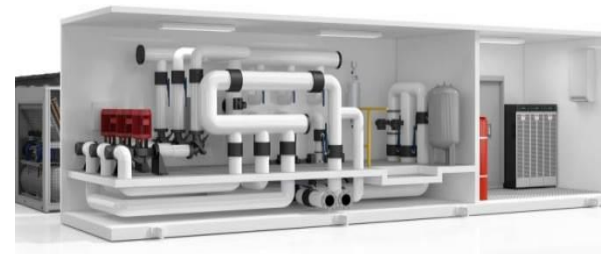


A focus across all data centre applications

from micro and edge to small server rooms to cloud & mega data centres

A full range of products and systems designed for specific applications

- MicroDC, Edge, Server and Network Rooms  
fully fledged power, cooling and IT from ½ rack to 100kW
- Prefabricated DC  
a full range of power, cooling, IT or all-in-ones from 100kW to 2MW
- Cloud, enterprise, co-location and service providers  
power, cooling and IT products, systems and services for any size
- Web-giants  
power, cooling and IT products, systems and services for any size including Open Compute products and systems



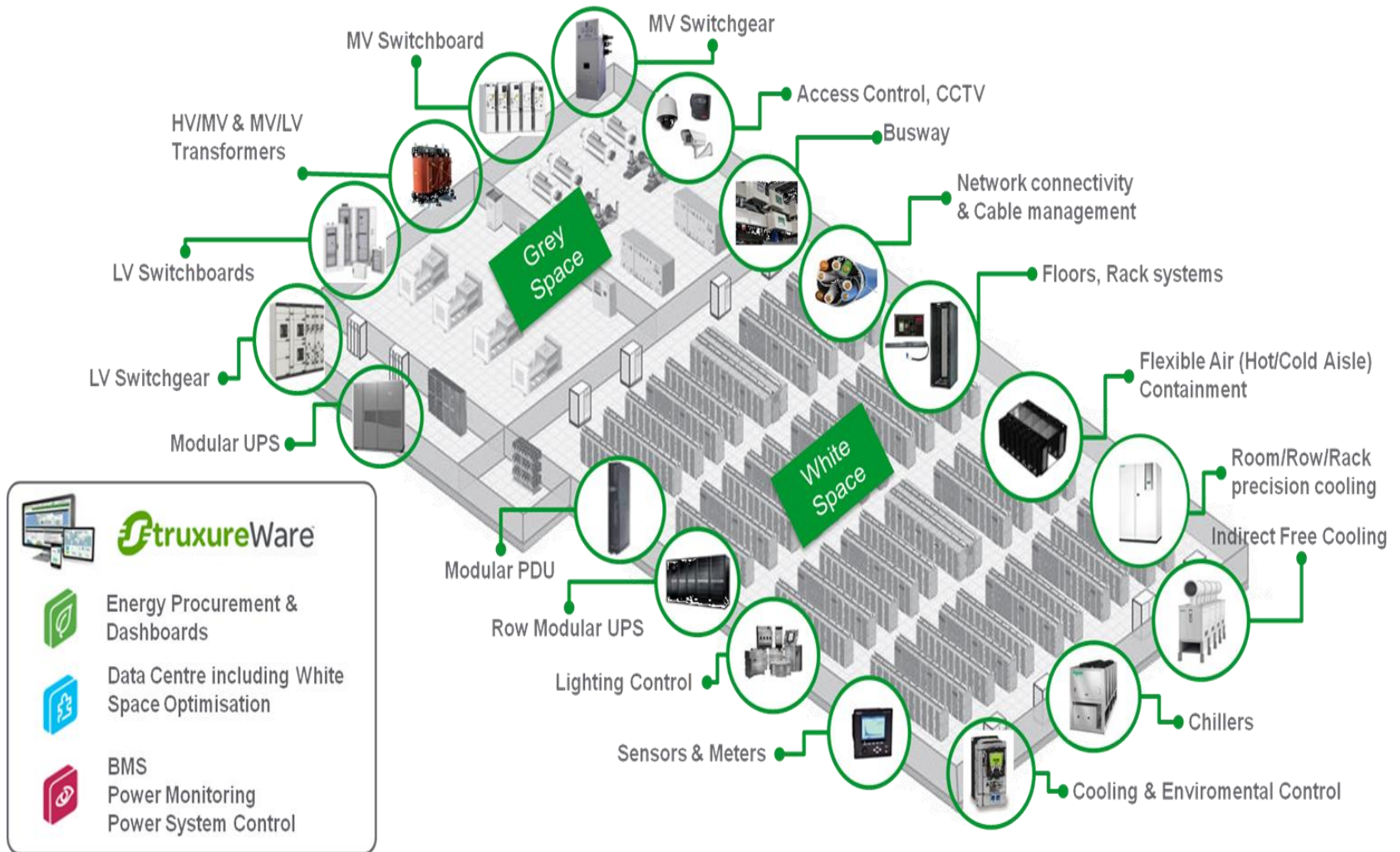
# Total Data Centre Solutions



**Estates and  
Operations**



A complete portfolio of data center products and systems from rack to row and from room to building



# Learning and Legacy



Estates and  
Operations



- ‘Learning and Legacy: The Role of Education in Creating Healthier, Happier Cities,’ considers the role tertiary education institutions play in encouraging community cohesion, connecting stakeholders, driving social and business innovation and acting as a catalyst for change to influence future generations.
- Throughout your presentation, please consider how your workshop focus/topic can play a part in helping to create community cohesion.