

AWALIFT 74/2

The sewage pumping station with the STRATE system

Area of use:

- Multi-family homes
- Where the reserve pump has to guarantee fail-safe operation e.g. in restaurants and public buildings
- Facilities that cannot be drained using natural gradient
- As protection from backwater damage
- Infrastructure facilities such as airports, industrial parks, subway systems etc.

up to
200 PE



AWALIFT 74/2

Technical data

System capacity:	4 m ³ /h - 200 PE
Pumping head:	up to 22 mWS
Free passage:	100 mm
Tank dimensions (LxWxH):	L = 860 mm, B = 660 mm, H = 380 mm
Tank contents:	107 l
Space requirements:	1500 mm x 1500 mm, oder Ø 1800 mm
Weight:	approx. 175 kg
Installation opening:	800 mm x 1000 mm
Inlet height:	400 mm (pipe bottom)
Inlet connection:	Flange DN 125 (optionally DN 150 PN, DN 200 PN 10)
Pressure pipe connection:	Flange DN 100 PN 10
Venting and air release:	DN 65 or DN 70

Materials

Tank:	G-Al Si12 (Alu230)
Pump:	EN-GJL-250 (GG25)
Coating / corrosion protection:	Acrylic combination paint coating, RAL 6011 green
Electrical connection:	230/400V, 50 Hz, IP 67
Motor capacity:	IP 67 0,75 kW – 1500 min ¹ IP 67 1,50 kW – 3000 min ¹ IP 67 2,20 kW – 3000 min ¹ IP 67 3,00 kW – 3000 min ¹

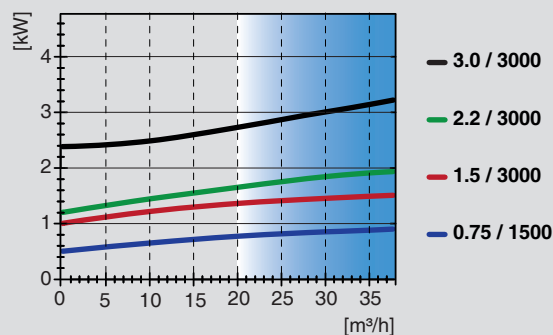
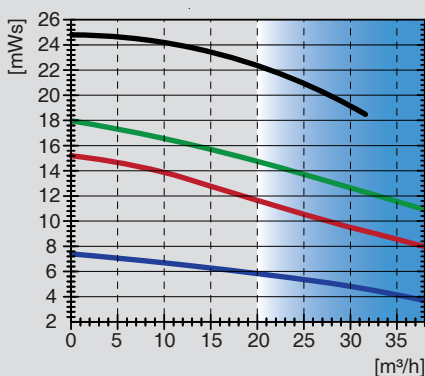
Scope of supply:

- One tank with two solids collecting chambers
- Two centrifugal pumps and motors according to type and operating location required
- Two non-return valves AWASTOP DN 100 K
- Two pressure pipe gate valves DN 100
- Level measurement

Accessories:

- Pump control
 - Inlet connector piece DN 125 (DN 150, DN 200)
 - Inlet gate valve DN 125 (DN 150, DN 200)
 - Pressure pipe connector piece DN 100
 - Manual diaphragm pump 1 1/2"
 - Basement draining pump
 - Alarm and monitoring systems, see control technology
 - STRATE AWALIFT shaft
 - STRATE service building
 - STRATE assembly and maintenance
- Special accessories according to your requirements

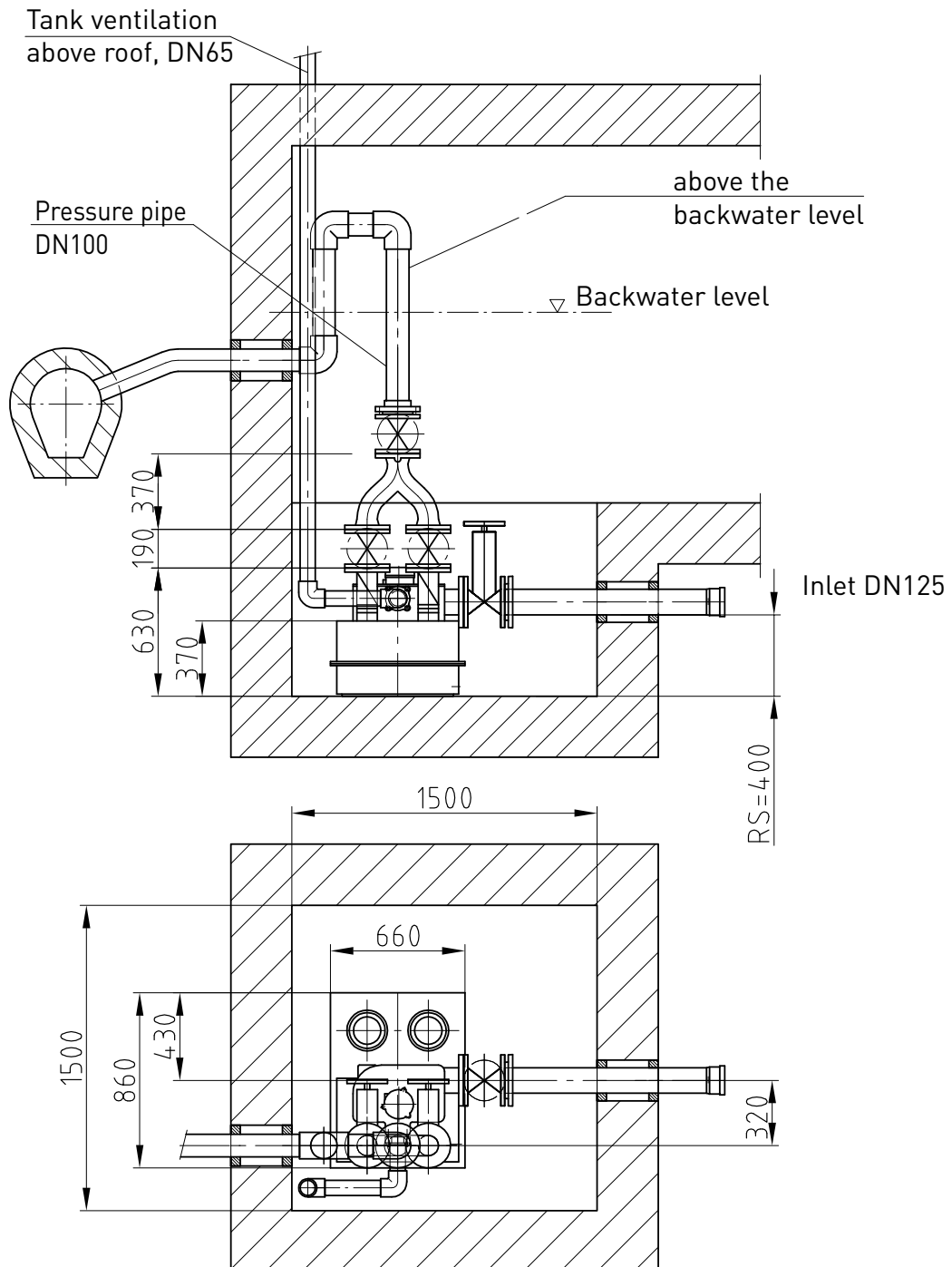
Characteristic curve for pump



Other operating points on request.
Pumps from the series STM 65/80 that can be used.
The impellers are adapted to the specific operating point.

Subject to technical modifications and errors.

AWALIFT 74/2



Copyright according to DIN 34

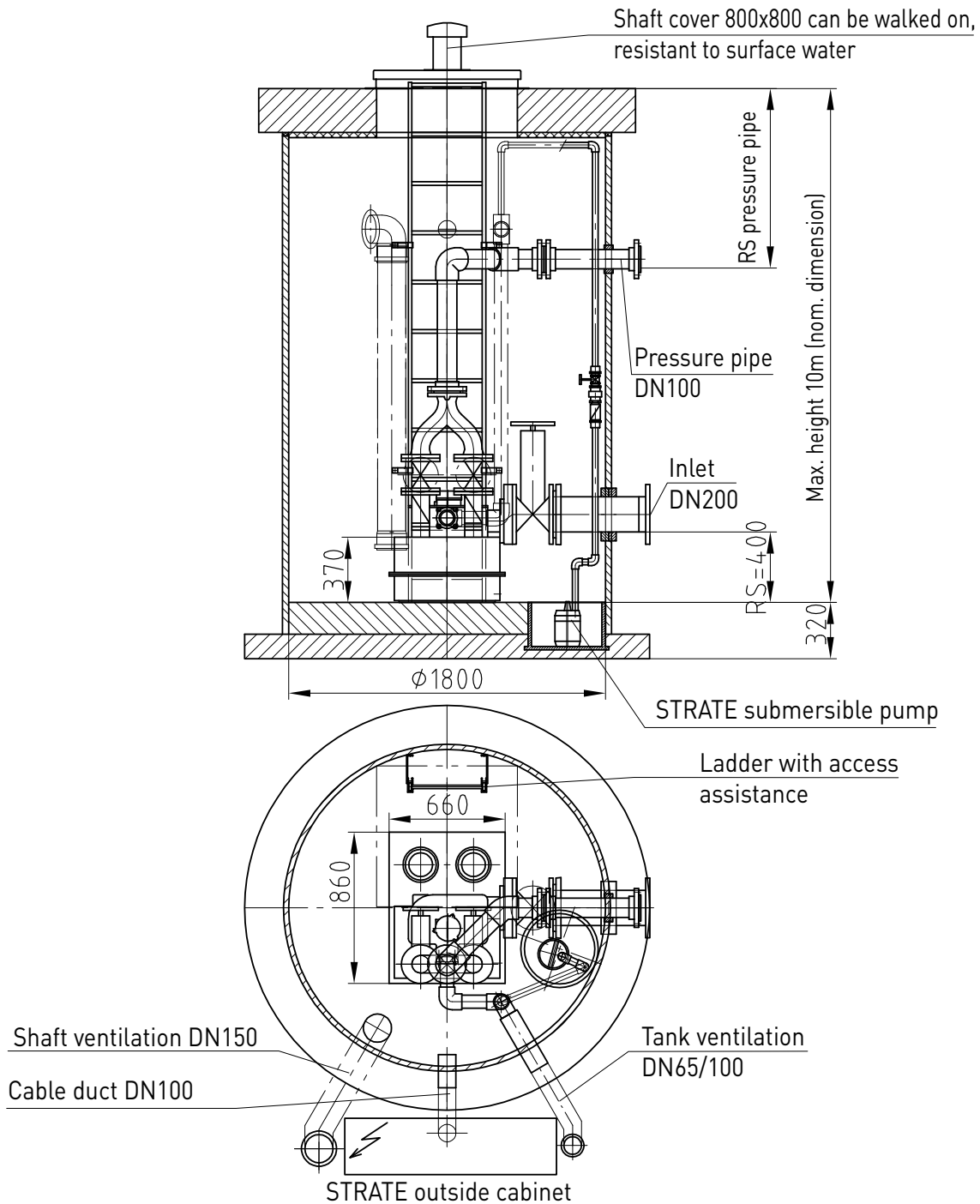
Scale:

Installation suggestion: AWALIFT 74/2

Set-up within a building

Subject to technical modifications and errors.

AWALIFT 74/2



Copyright according to DIN 34	Planning suggestion: Complete pumping station AWALIFT 74/2 in the AWALIFTSCHACHT 1800, pre-assembled ready for operation
Scale:	

Subject to technical modifications and errors.