

UNDERLINE XL



Date:

Type:

Fixture:

Project:

Approved:

The **UNDERLINE XL** is Solid State Luminaires next generation ultra-low profile under-cabinet luminaire. **UNLXL** provides additional features to our existing product set. With 2 times the lumen output - up to 650 lumens/foot and incorporating an integrated mounting system for easy installation and advanced accessories for a variety of mounting options. Mounting detail allows up to 90 degrees of rotation. **UNDERLINE XL** comes in either 12", 20", or 39" lengths and 3000K or 4000K color temperatures. The housing is constructed of extruded anodized aluminum for interior use only and comes in standard white finish. The fixture features Plug N' Play connectors for easy installation along with a fully functional motion sensor accessory to enhance your control capabilities.

SPECIFICATIONS

PHYSICAL

beam spread	180°
LEDs per foot	UNLXL-1: 42 UNLXL-2: 72 UNLXL-3: 144
lengths/dimensions	UNLXL-1: 12" L x 1.3" W x 0.3" Deep UNLXL-2: 20" L x 1.3" W x 0.3" Deep UNLXL-3: 39" L x 1.3" W x 0.3" Deep
weight	1 foot (.25 lbs) 4 foot (1.0 lbs)
housing	Extruded anodized aluminum; white standard with black option
lens	Clear semi-diffused lens
mounting	Integral surface mount bracket adjustable to 45° and 90° locking positions
ingress protection	Dry interior locations IP20 rated
fixture connections	Daisy chain with male and female plug and play connectors

PERFORMANCE

color temperature	3000K	4000K	
lumen output [Dimming]	540 lm / per foot	650 lm / per foot	
lifetime	> 60,000 hours / L70 or better		
color consistency	3 SDCM / 84CRI		
temperature	-4°F to 104°F (-20°C to 40°C)		
junction temperature	62°C @ T ^a 25°C		
warranty	3 Year limited warranty (refer to website for details)		

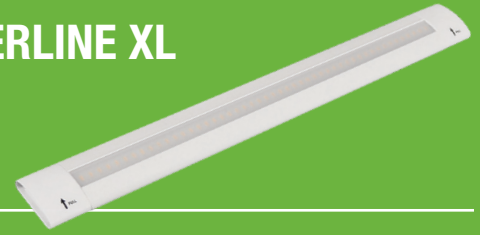
ELECTRICAL

input voltage	24V DC (only)
power supply	Class II 36W PPS 24V DC (2 Amps), see Accessories for dimmable, 120V-277V power supplies (Use of non-SSL Power Supply voids warranty.)
certification	cULus / CE
standards	UL-Class II / CE Class III / IES LM-79 / LM-80
power consumption	UNLXL-1: 6W UNLXL-2: 12W UNLXL-3: 18W
controls	Optional: Dimmable 0-10V (available with UN power supply only)

Due to continuous development and improvements, specifications are subject to change without notice. Solid State Luminaires reserves the right to change lab test details or specifications without notice. Product use certifies agreement to Solid State Luminaires terms and conditions.

UNDERLINE XL

Ordering Information



PART NUMBERS

UNLXL			
MODEL	LENGTH	CCT	OPTIONS
UNLXL UNDERLINE XL	1 12 in [300mm] 2 20in [500mm] 3 39 in [1000mm]	3K 3000K 4K 4000K	BK Black Housing (Leave Blank) White Housing (Standard)

Included with fixture: Integral hinged bracket and screws. Consult installation instruction for **Maximum Run Length** = 36W of fixtures (See options and accessories.)

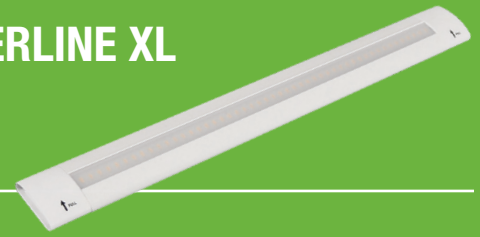
ACCESSORIES (Indicate the quantity needed for each item. Black is standard, a [-WH] in the part number indicates white)

_____ SC-XL (White) Straight Connector	_____ PD-WH White Portable Dimmer	_____ SSL-UN50i 50W Power Supply - <i>UNV, 120V-277V</i>
_____ CC3-XL (White) Connector Cable (3 ft.)	_____ PWR-XL Power Button	_____ SSL-UN50i-DIM 0-10V Dimmable, 50W Power Supply - <i>UNV, 120V-277V</i>
_____ 4S-WH White 4-Way Splitter	_____ PIRXL PIR Motion Detector	_____ SSL-UN50i-2CC 50W Power Supply (2 Cords) - <i>UNV, 120V-277V</i>
_____ 8S-WH White 8-Way Splitter	_____ TDE -WH White Touch Dimmer Control	_____ SSL-UN100i 100W Power Supply - <i>UNV, 120V-277V</i>
	_____ TDE-BK Black Touch Dimmer Control	_____ SSL-UN100i-DIM 0-10V Dimmable, 100W Power Supply - <i>UNV, 120V-277V</i>
	_____ PPS-36W-WH White Portable Power Supply (36W) - <i>120V only</i>	_____ SSL-UN100i-2CC 100W Power Supply (2 Cords) - <i>UNV, 120V-277V</i>
		_____ SSL-UN100i-2CCDIM 0-10V Dimmable 100W Power Supply (2 Cords) - <i>UNV, 120V-277V</i>

Due to continuous development and improvements, specifications are subject to change without notice. Solid State Luminaires reserves the right to change lab test details or specifications without notice. Product use certifies agreement to Solid State Luminaires terms and conditions.

UNDERLINE XL

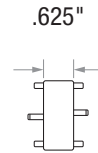
Dimensions



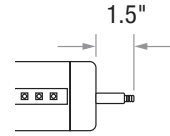
STANDARD DIMENSIONS

	1 ft	2 ft	3 ft
length	12" L	20" L	39" L
width	1.3" W	1.3" W	1.3" W
height	.375" D	.375" D	.375" D

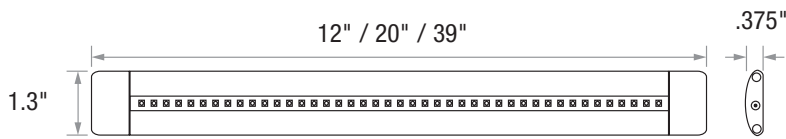
CONNECTOR DIMENSIONS



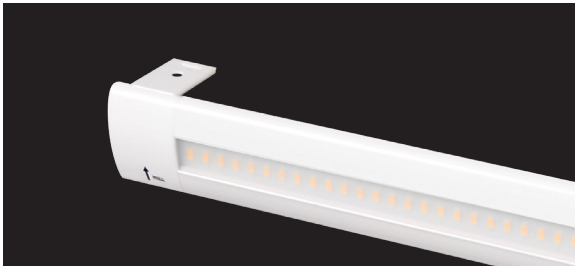
Straight Connector



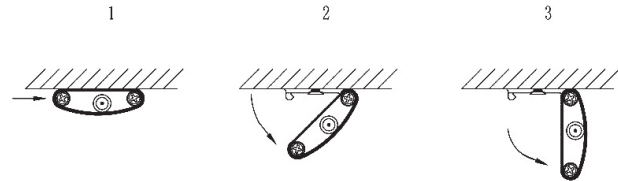
Cord Allowance



MOUNTING



Integral Adjustable Mounting Bracket

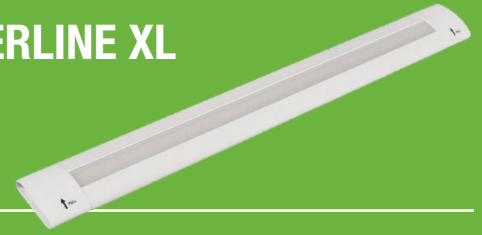


Screw bracket to fixture and adjust to desired angle.

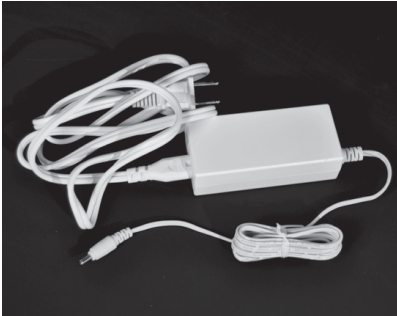
Performance	Connected	Lumens	
Model	Wattage	3000K	4000K
UNLXL-1	6	540	650
UNLXL-2	12	1080	1300
UNLXL-3	18	1620	1850

Due to continuous development and improvements, specifications are subject to change without notice. Solid State Luminaires reserves the right to change lab test details or specifications without notice. Product use certifies agreement to Solid State Luminaires terms and conditions.

Accessories



POWER SUPPLY



PPS Portable Power Supply (120V only)

The following table illustrates how many fixtures each listed power supply can power.

Portable Power Supply (120V only)	UNLXL-1 (1 ft)	UNLXL-2 (2 ft)	UNLE-3 (3 ft)
36W Power Supply (Cord Lengths: 58" input/PPS & 58" output)	6 = 36W	3 = 36W	2 = 36W

SAFETY INFORMATION

The **UNDERLINE edge** is for indoor use only.

The LED module is not protected against short circuits, overload or overheating. Therefore you must use an electronically stabilized power supply that offers protection against the previously mentioned safety risks. Our power supplies are specifically designed with protection features for safe operation.

WARNING: If a non Solid State Luminaires power supply is used to power the fixtures, the manufacturer warranty will be voided.

UN POWER SUPPLY



UNPower Supply (Interior Only): UNV, 120V-277V
UN50i / UN50i-2CC / UN100i / UN100i-2CC

The following table illustrates how many fixtures each listed power supply can power. (Max 36W / segment)

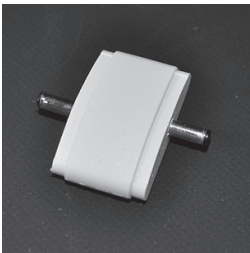
Power Supply (UNV, 120V-277V)	UNLE-1 (1 ft)	UNLE-2 (2 ft)	UNLE-3 (3 ft)
UN50W Power Supply	8 = 48W	4 = 48W	2 = 36W
UN100W Power Supply	16 = 96W	8 = 96W	4 = 72W

Dimensions - Length (11.2in) Width (5.2in) Height (2.1in)

Weight - 2.85Lbs

Add DIM option for 0-10V dimming capability.

ACCESSORIES - AVAILABLE IN BLACK (STANDARD) OR WHITE (-WH)



SCXL Straight Connector



TDXL Touch Dimmer



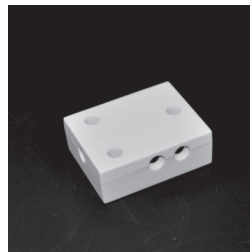
PIRXL (Pull Down) PIR Motion Detector



CC Connector Cable (3' or 6')



PWRXL Power Button



4S 4-Way Splitter



PD Portable Dimmer

Due to continuous development and improvements, specifications are subject to change without notice. Solid State Luminaires reserves the right to change lab test details or specifications without notice. Product use certifies agreement to Solid State Luminaires terms and conditions.