

Date:	Approved:
Type:	
Fixture:	
Project:	

UNDERLINE EDGE



Introducing the **UNDERLINE EDGE**, a remarkably sleek under-cabinet luminaire designed to provide an ultra-low profile. This low-voltage luminaire features a white opal lens that delivers a distinctive, pixelation-free illumination, ensuring no direct-view distortions.

The **UNDERLINE EDGE** is available in black or white housing colors, lengths of 12", 20", and 39", with a choice of color temperatures including 3000K, 3500K, or 4000K.

For added convenience and functionality, you can have a Touch Dimmer and Power Button Module. Crafted from extruded anodized aluminum, the housing is designed for interior applications. Plug N' Play connectors make setup and installation a breeze.

SPECIFICATIONS

PHYSICAL

beam spread	180°
lengths/dimensions	UNLE-1: 11.9" x 1.3" W x 0.3" D, UNLE-2: 19.8" x 1.3" W x 0.3" D, UNLE-3: 39.4" x 1.3" W x 0.3" D
weight	1 foot (.25 lbs), 4 foot (1.0 lbs)
housing	Extruded anodized aluminum
lens	White opal polycarbonate
mounting	Surface mount bracket included with fixture
ingress protection	Dry interior locations IP20 rated
fixture connections	Daisy chain with male and female plug and play connectors

PERFORMANCE

color temperature	3000K	3500K	4000K
lumen output	290 lm / per foot	300 lm / per foot	310 lm / per foot
lumen maintenance	L70 >60,000 hours		
color consistency	3 SDCM / 84 CRI		
temperature	-4°F to 104°F (-20°C to 40°C)		
warranty	5-Year limited warranty		

ELECTRICAL

input voltage	24V DC (only)
power supply	Class II, 36W PPS / 50W 24V DC (2 Amps), 100W 24V DC (4.1 Amps) - (Use of non-SSL Power Supply voids warranty.)
certification	cULus / CE
standards	UL-Class II / CE Class III / IES LM-79 / LM-80
power consumption	UNLE-1: 6W, UNLE-2: 12W, UNLE-3: 18W
controls	Optional: Dimmable 0-10V (Available with UN power supply only.)

UNDERLINE EDGE



Ordering Information

PART NUMBERS

UNLE			
MODEL	LENGTH	CCT	OPTIONS
UNLE UNDERLINE EDGE	1 11.9 in [300mm]	3K 3000K	BK Black Housing
	2 19.8 in [500mm]	35K 3500K	WH White Housing
	3 39.4 in [1000mm]	4K 4000K	

Included with fixture: Mounting clips (MC-E) with screws. Consult installation instruction for **Maximum Run Length** = 36W of fixtures (See options for accessories.)

ACCESSORIES (Indicate the quantity needed for each item. Black is standard, a [-WH] in the part number indicates White)

_____ **SC-UE-BK (-WH)** Straight Connector

_____ **MC-E** Mounting Clips

_____ **CC3-E-BK Black** Connector Cable (3 ft.)

_____ **CC3 (-WH)** Connector Cable (3 ft.)

_____ **CC6 (-WH)** Connector Cable (6 ft.)

_____ **C90E** 90° Corner Connector

_____ **C90VE** 90° Vertical Corner Connector

_____ **PD (-WH)** Portable Dimmer

_____ **TDE (-WH)(-BK)** Touch Dimmer Control

_____ **PPS-36W (-WH)** Portable Power Supply (36W) (120V only)

_____ **4S (-WH)** 4-Way Splitter

_____ **8S (-WH)** 8-Way Splitter

_____ **UN50i** 50W Power Supply - UNV 120 - 277 VAC

_____ **UN50i-2CC** 50W Power Supply (2 Cords) - UNV 120 - 277 VAC

_____ **UN100i** 100W Power Supply - UNV 120 - 277 VAC

_____ **UN100i-2CC** 100W Power Supply (2 Cords) - UNV 120 - 277 VAC

_____ **DIM** 0-10V Dimmable Module (UNV only)



UNDERLINE EDGE

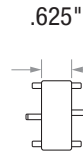


Dimensions

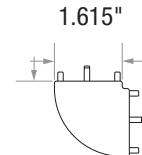
STANDARD DIMENSIONS

	1 ft	2 ft	3 ft
length	11.9" L	19.8" L	39.4" L
width	1.3" W	1.3" W	1.3" W
height	0.3" D	0.3" D	0.3" D

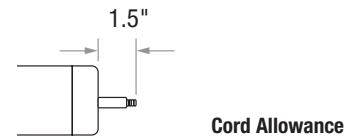
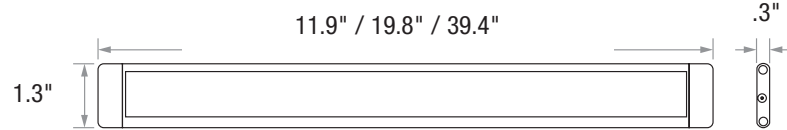
CONNECTOR DIMENSIONS



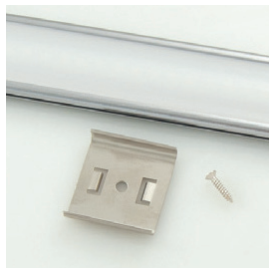
Straight Connector



90° Corner Connector



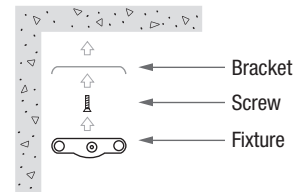
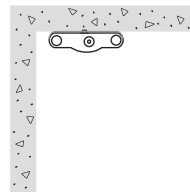
MC-E



MC-E Mounting Clip



Mounting Fastener



Performance Model	Connected Wattage	Lumens		
		3000K	3500K	4000K
UNLE-1	6	290	300	310
UNLE-2	12	580	600	620
UNLE-3	18	870	900	930

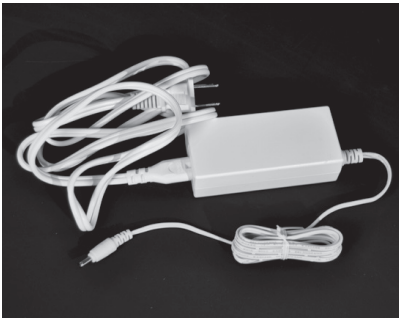
Due to continuous development and improvements, specifications are subject to change without notice.
Product use certifies agreement to Solid State Luminaires terms and conditions.

UNDERLINE EDGE



Accessories

POWER SUPPLY



PPS Portable Power Supply (120V only)

The following table illustrates how many fixtures each listed power supply can power.

Portable Power Supply (120V only)	UNLE-1 (1 ft)	UNLE-2 (2 ft)	UNLE-3 (3 ft)
36W Power Supply (Cord Lengths: 58" input/PPS & 58" output)	6 = 36W	3 = 36W	2 = 36W

SAFETY INFORMATION

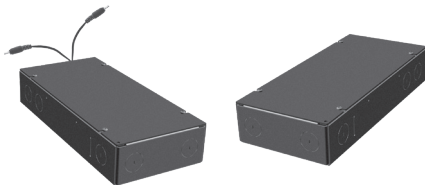
The **UNDERLINE EDGE** is for indoor use only.

The LED module is not protected against short circuits, overload or overheating.

Therefore you must use an electronically stabilized power supply that offers protection against the previously mentioned safety risks. Our power supplies are specifically designed with protection features for safe operation.

WARNING: If a non Solid State Luminaires power supply is used to power the fixtures, the manufacturer warranty will be voided.

UN POWER SUPPLY



UNPower Supply (Interior Only): UNV 120 - 277 VAC
UN50i / UN50i-2CC / UN100i / UN100i-2CC

The following table illustrates how many fixtures each listed power supply can power. (Max 36W / segment)

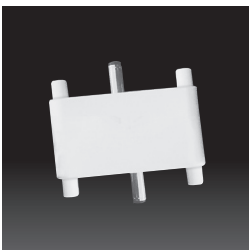
Power Supply (UNV 120 - 277 VAC)	UNLE-1 (1 ft)	UNLE-2 (2 ft)	UNLE-3 (3 ft)
UN50W Power Supply	8 = 48W	4 = 48W	2 = 36W
UN100W Power Supply	16 = 96W	8 = 96W	4 = 72W

Dimensions - Length (11.2in) Width (5.2in) Height (2.1in)

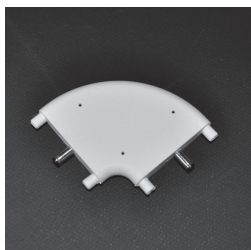
Weight - 2.85Lbs

Add **DIM** option for 0-10V dimming capability.

ACCESSORIES - AVAILABLE IN BLACK (STANDARD) OR WHITE (-WH)



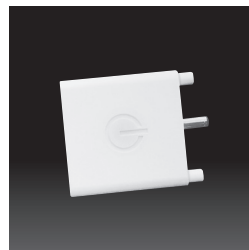
SC-UE Straight Connector



C90E 90° Corner Connector



C90VE 90° Vertical Connector



TDE Touch Control On/Off



CC Connector Cable (3' or 6')



4S 4-Way Splitter

