

Catalog Number	
Notes	Type

## HMRL Series

Hazardous Area Lighting Fixtures



### Description

- The HMRL LED fixture is the ideal choice for marine and hazardous applications requiring a linear design. Its rugged construction withstands strong vibrations, saltwater, corrosive elements and hazardous environments while the streamlined design sheds water.

### Optics

- Shatter and heat resistant clear acrylic lens.
- Tempered glass available as an option.

### Electrical

- Easy access to driver, boards and internal wiring.
- Standard color temperature – 5000 K CCT (2ft) & 5500 K CCT (4ft).
- 10 kV/10kA surge protection is standard.

### Mechanical

- Streamlined ribbed corrosion resistant, copper free extruded aluminum body for greater heat dissipation and extended driver life.
- Extruded aluminum lens frame for greater strength.
- Cast aluminum end caps with molded eye-bolt hubs.
- Ultra-violet resistant plastic hinges for ease of access and relamping.

- Stainless steel cam action lens latches for maximum strength and durability.
- This heavy-duty fixture arrives completely assembled.
- Designed to withstand strong vibration.
- Standard terminal block provides ease of wiring.

### Listings

- UL844 listed (see matrix on page 2):  
Class 1, Division 2, Groups A, B, C & D
- UL 844 Hazardous Locations
- UL 1598A Marine Outside
- ETL Listed to UL1598 Wet Locations

### Warranty

5-year limited warranty. Complete warranty terms located at [www.acuitybrands.com/CustomerResources/Terms\\_and\\_Conditions.aspx](http://www.acuitybrands.com/CustomerResources/Terms_and_Conditions.aspx)

**Note:** Actual performance may differ as a result of end-user environment and application.

All values are design or typical values, measured under laboratory conditions at 25 °C.

Specifications subject to change without notice.

### Typical Applications

- Petroleum Refineries
- Ethanol Facilities
- Chemical Plants
- Water Treatment Plants
- Power Generation Plants
- Food Processing (Confectionary)
- Paper Mills
- Coal & Dust Storage
- Grain Elevators

### Dimensions: Inches (millimeters) unless otherwise noted.

See individual fixture dimensions and weight specifications on page 2.



## ORDERING INFORMATION

**Example:** HMRL 8L 2 AS

Series	LED Type	Nominal Length	Voltage <sup>1</sup>	Options
HMRL	8L	2	2-foot (56W, 6000 L)	AS 120-277V
		4	4-foot (74W, 8000L)	12 120V
				20 208V
				24 240V
				27 277V
				TW End mounting / thru wire cable installation only
				F1 Single fuse (120/277 volt) <sup>2</sup>
				F2 Double fuse (208/240 volt) <sup>2</sup>
				TG Tempered glass
				EBO Eye bolt only

### Accessories: Order as separate catalog number.

HMRL SMK	Straight mounting kit
HMRL OMK	Offset mounting kit
HMRL SB	Straight brackets (must order qty 2)
HMRL OB	Offset brackets (must order qty 2)

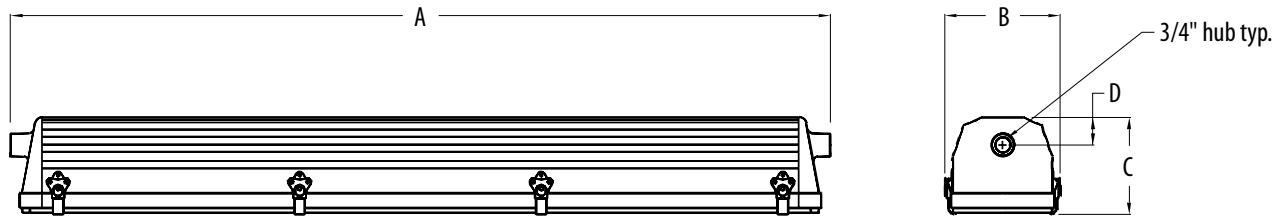
### Notes

- 50/60 HZ.
- Fuse option not available for marine listed fixtures.

# HMRL Series

Hazardous Area Lighting Fixtures

## DIMENSIONAL DATA



Package	"A"	"B"	"C"	"D"	Weight
<b>4 ft. models</b>	52.1" (1323.3mm)	7.5" (190.5mm)	6.2" (157.5mm)	1.8" (45.7mm)	36 lbs
<b>2 ft. models</b>	28.1" (713.7mm)	7.5" (190.5mm)	6.2" (157.5mm)	1.8" (45.7mm)	26 lbs

## OPERATIONAL DATA

### Operating Characteristics

Package	Ambient Rating (120V - 277V)	Delivered Lumens 5000 K CCT @ 25C <sup>1</sup>	Wattage @ 120V	LPW @ 5000 K
HMRL8L4	-4°F to 131°F (-20°C to 55°C)	7660	74.1	103.4
HMRL8L2	-4°F to 131°F (-20°C to 55°C)	5476	55.7	98.3

#### Notes

<sup>1</sup> Absolute photometry calculated in accordance with IESNA LM-79-08

### Operating Temperature Code for Hazardous Locations:

Package <sup>1</sup>	Max Ambient Range	Class 1 Division 2, Groups A, B, C, D
HMRL8L4U	55°C	T6
HMRL8L2U	55°C	T6

#### Notes

<sup>1</sup> Supply wire temperature is 90°C.

# Luminarias Para Áreas

## Clasificadas Como Peligrosas



Luminaria LED  
**Serie Aioros**



Luminaria LED Serie  
**Aioros Domo**



Luminaria LED Serie  
**Aldebaran**



Luminaria LED  
**Serie Camus**

Luminarias  
Certificadas

  
LENOR

# Líneas de **Producto**



Áreas Peligrosas (Clasificadas)  
Nema 7



Intemperie y Ambientes  
Especiales (Áreas Generales)



Tablaros Eléctricos



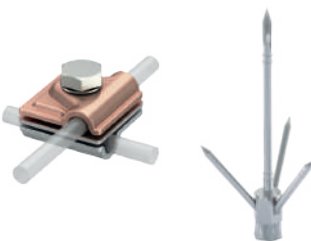
Sistema  
Puesta a Tierra



Iluminación



Accesorios de Conexión  
(Conduit)



Apantallamiento Contra  
Descargas Atmosfericas



Soportería



Herrajería

