

## Quick Start Guide

# VX

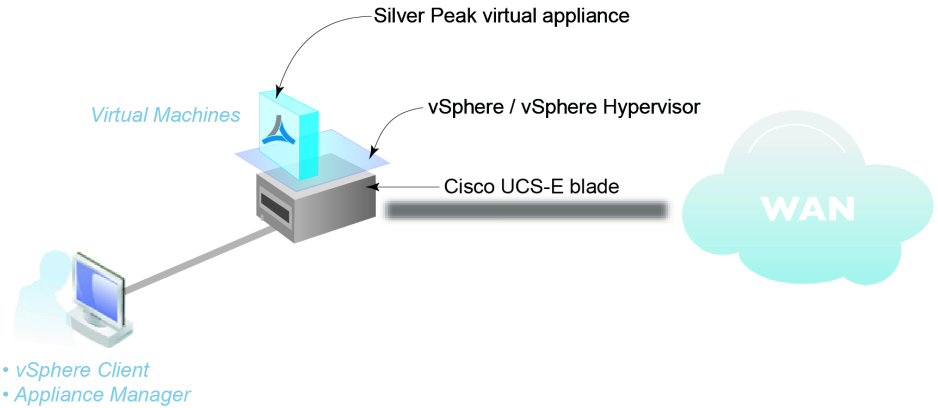
· VIRTUAL APPLIANCES ·

## VMware vSphere / vSphere Hypervisor

· **Server Mode** ·  
(Single-Interface Deployment)

### Cisco UCS-E Blade

© 2015 Silver Peak Systems, Inc.



### Before You Begin

- If your UCS-E blade does not have VMware ESXi preinstalled, please refer to [Preparing a Cisco UCS-E Server with VMware vSphere for VXOA](#)
- Download the virtual appliance OVF template file:
  - For a 30-day free trial, go to the [Silver Peak Marketplace](#).
  - If you've purchased the product, then log in at the [Silver Peak Support portal](#).
- Obtain a VX virtual appliance activation license key
- If not using DHCP, then get an IP address for the Silver Peak appliance.

This Quick Start Guide only covers the single-interface Server mode, which uses **mgmt0** for data traffic.

**NOTE:** When you download the OVF template file and save it, Internet Explorer may change the suffix from **.ova** to **.tar**. If it does, change the suffix back to **.ova**.

### SUMMARY OF TASKS

- 1 Configure the BIOS setting of the UCS-E blade**
- 2 Configure the virtual network**
- 3 Deploy the VX virtual appliance's OVF template**
- 4 Configure the Resource Allocation Reservation**
- 5 Establish connectivity to the virtual appliance**
- 6 Run the Appliance Manager initial configuration wizard**

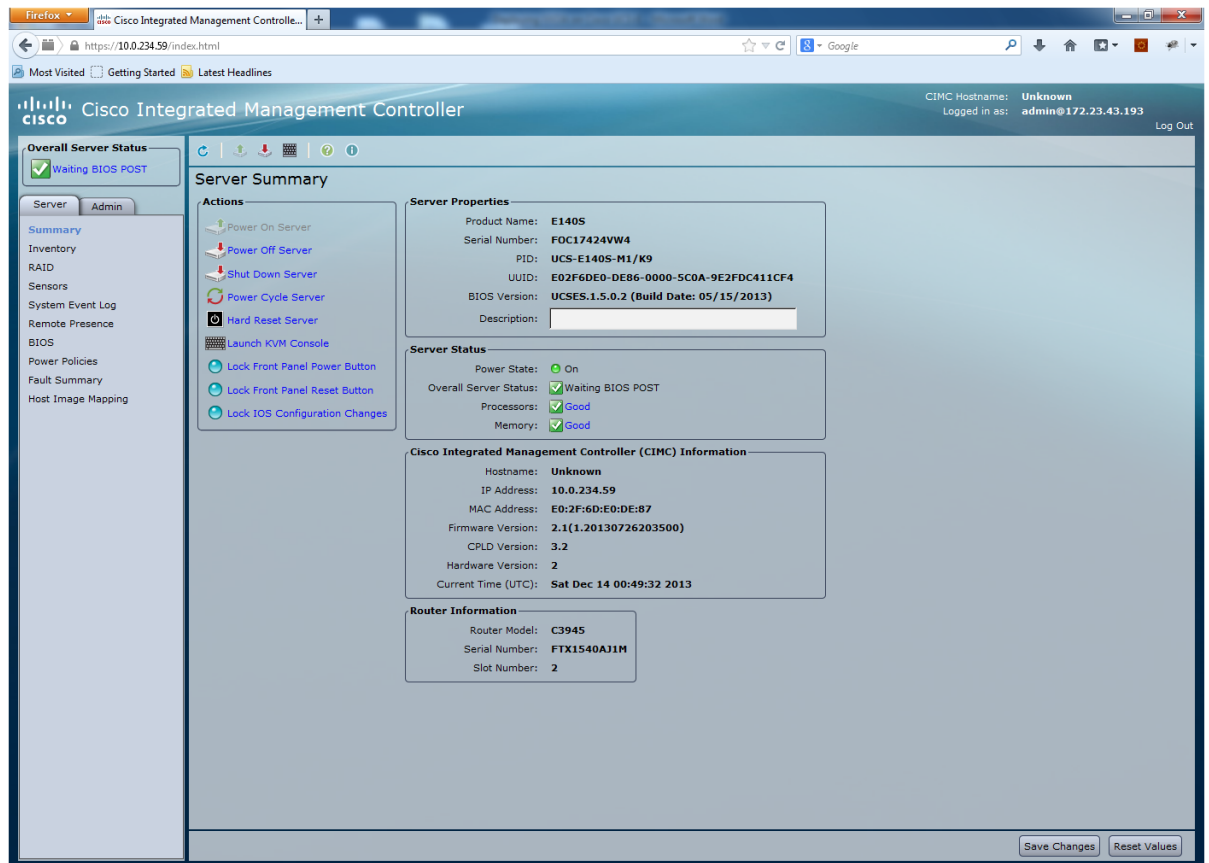


**Silver Peak Systems, Inc.**  
2860 De La Cruz Blvd.  
Suite 100  
Santa Clara, CA 95050

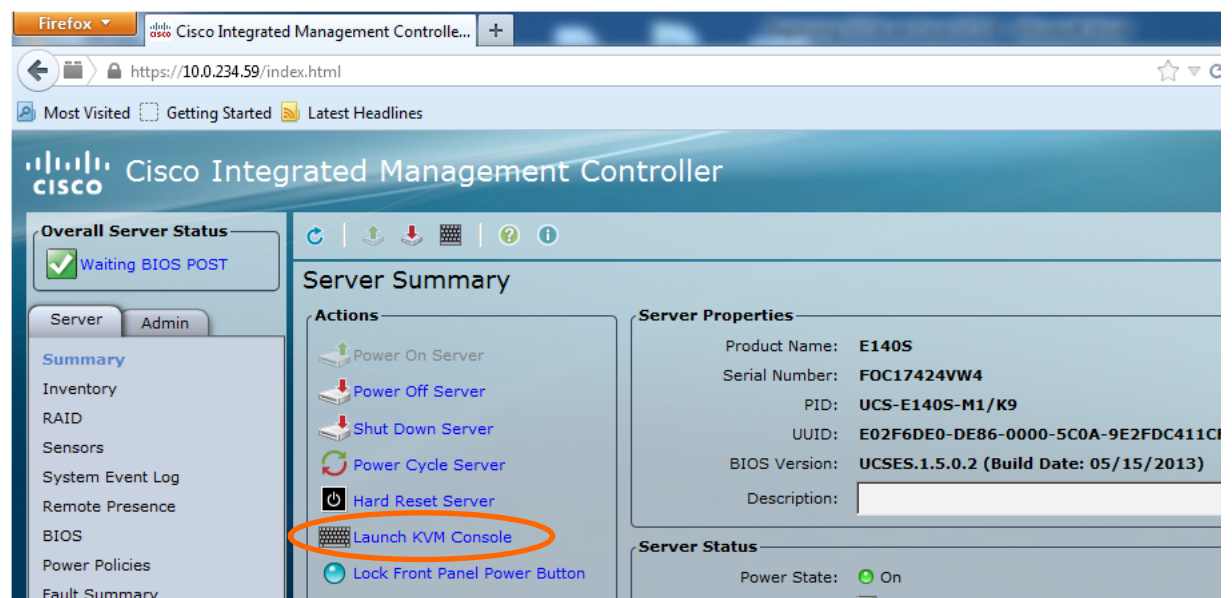
1.877.210.7325 (toll-free in USA)  
+1.408.935.1850  
[www.silver-peak.com/support](http://www.silver-peak.com/support)

## Configure the BIOS setting of the UCS-E blade

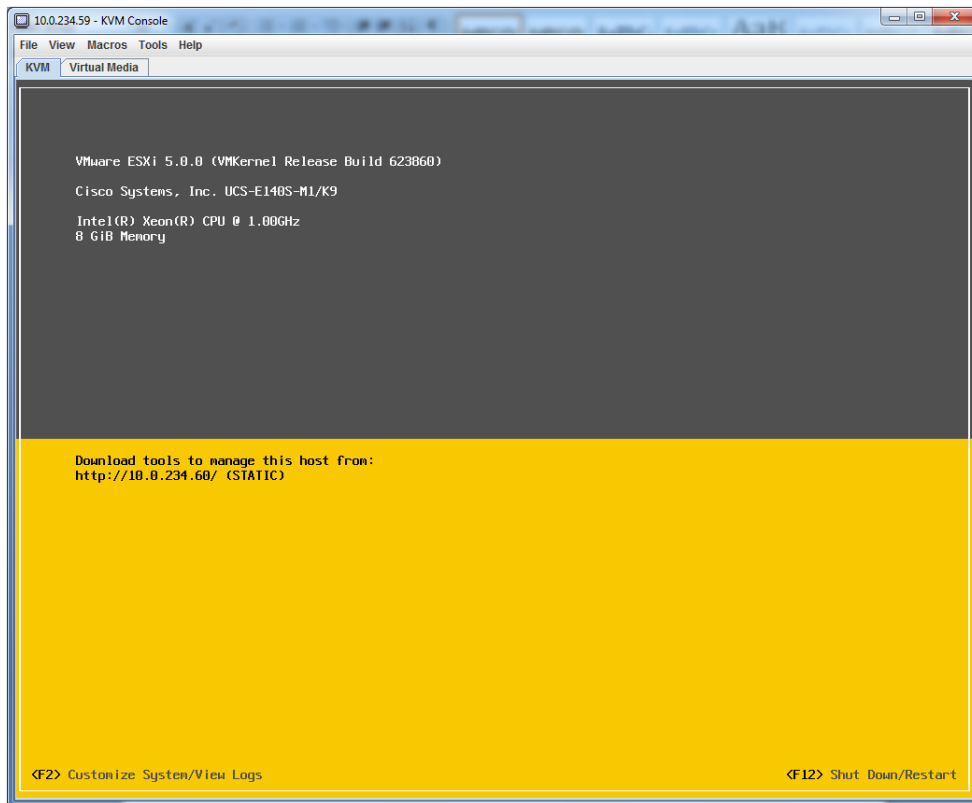
- a. Launch a browser and point to the Cisco Integrated Management Controller (CIMC) of the UCS-E blade.



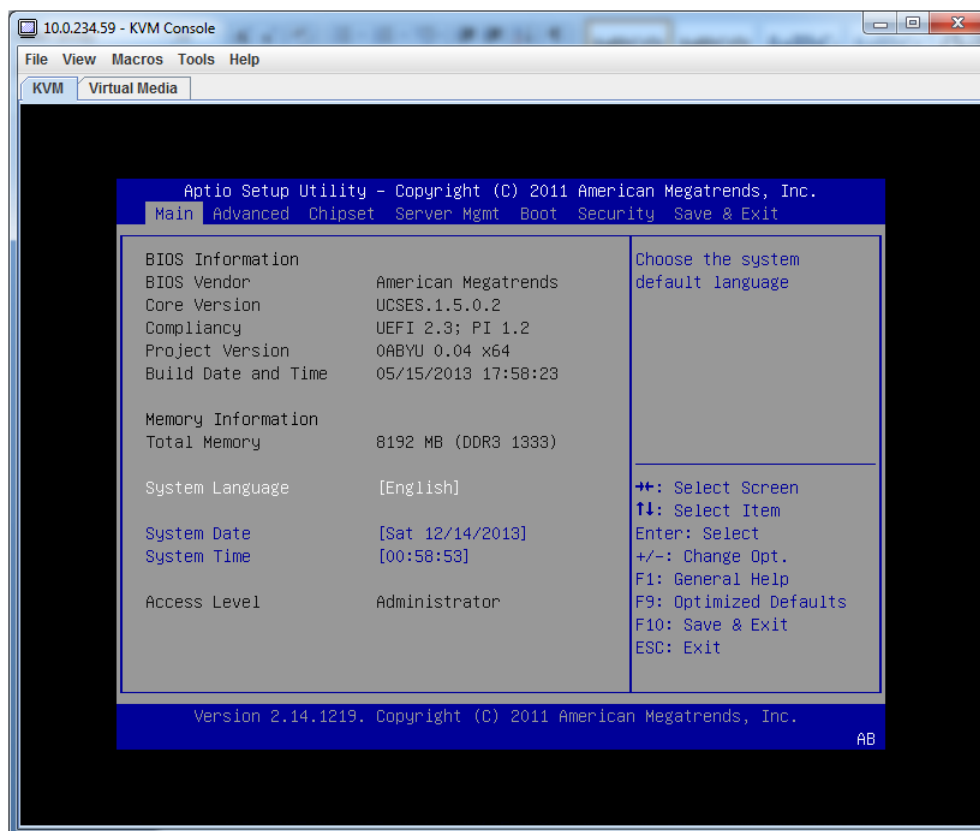
- b. Under **Actions**, click **Launch KVM Console**.



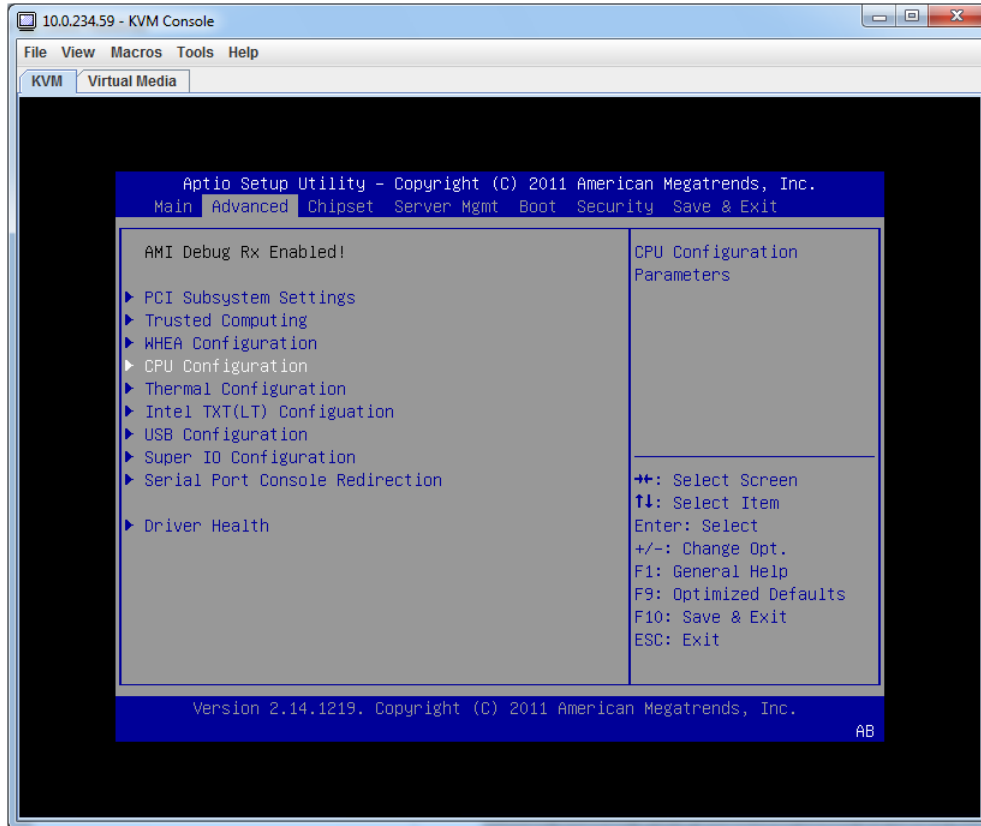
The following screen appears.



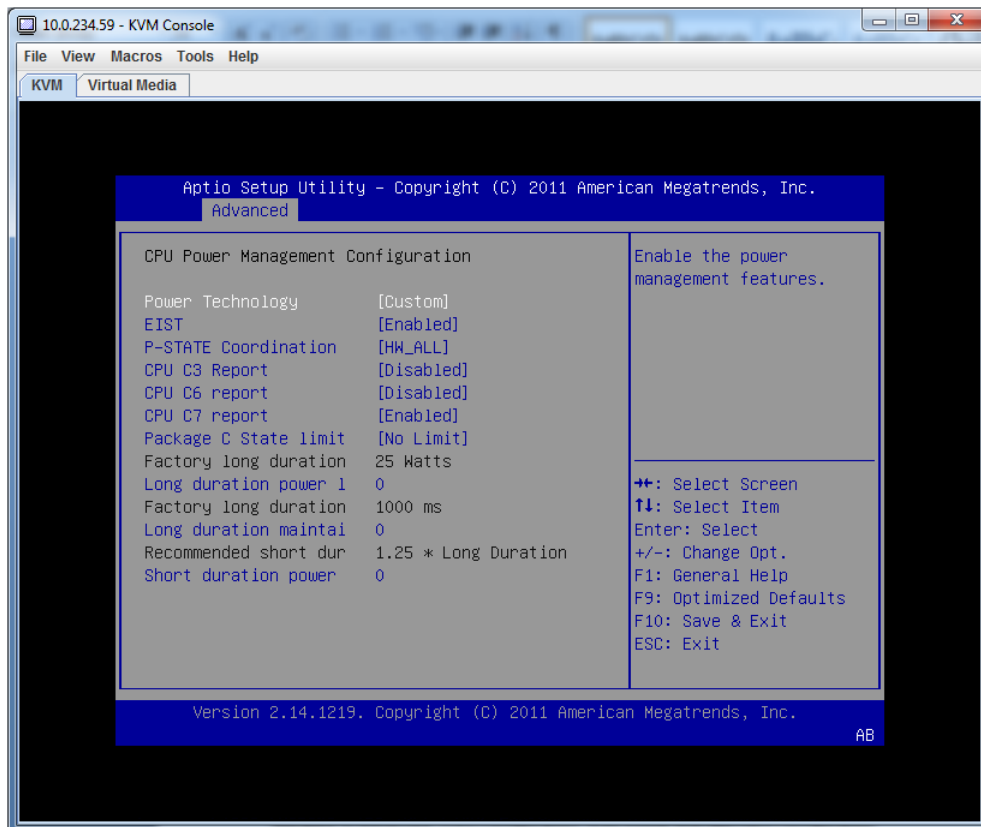
- c. Press the **F12** key to restart the ESXi.  
While the system boots up, press **F2** to enter the BIOS setup.



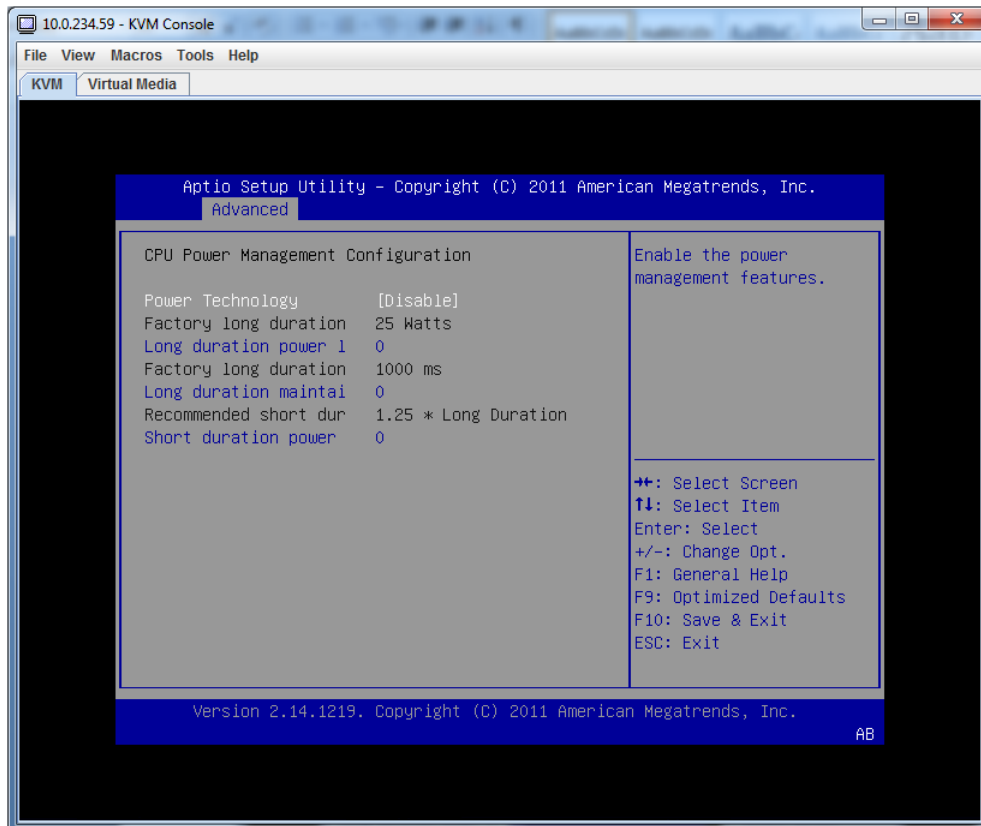
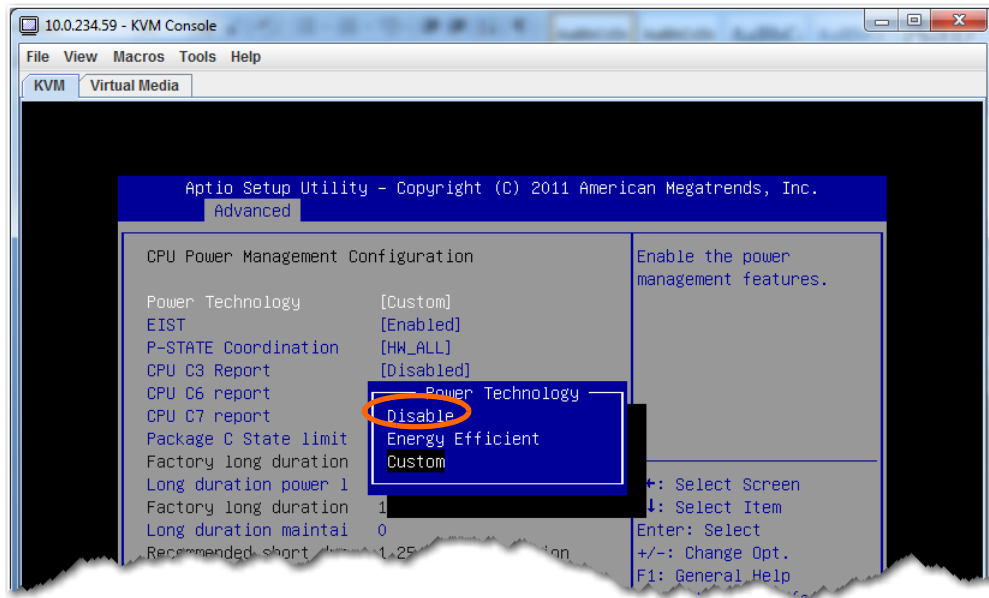
d On the **Advanced** tab, click **CPU Configuration**.



On the CPU Configuration screen, click **CPU Power Management Configuration**.



- e. Change the **Power Technology** setting from Custom to **Disable**.

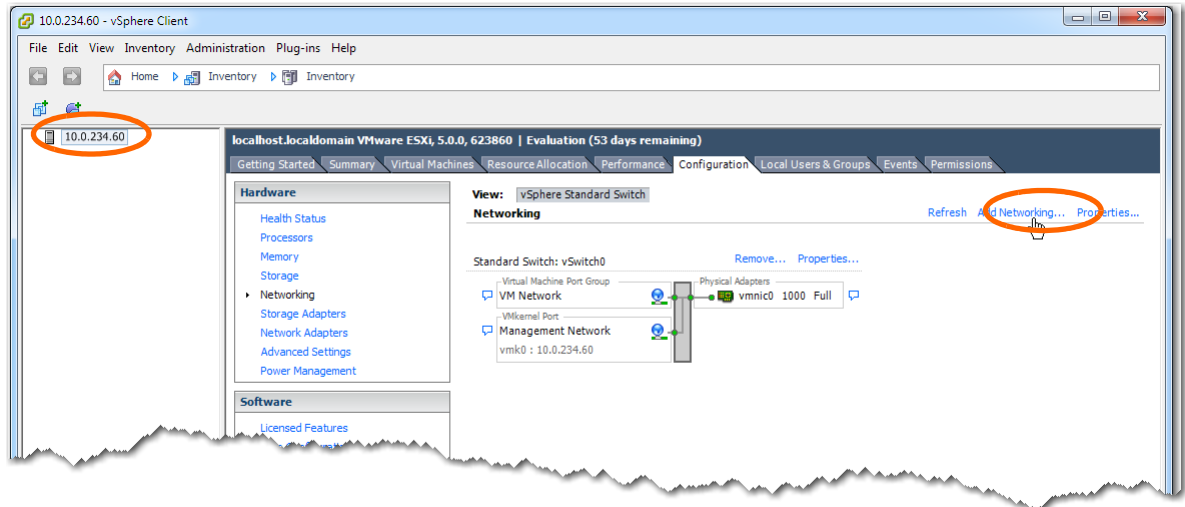


- f. Press **F10** to save and exit. When asked to confirm your choice, click **Yes**.  
The system will continue to boot.

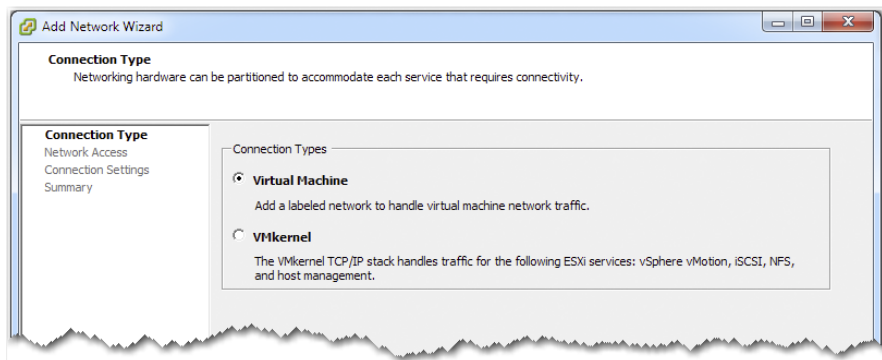
## 2 Configure the virtual network

Now you'll create a new virtual network called **mgmt0**, and use **vmnic1** as the network adapter.

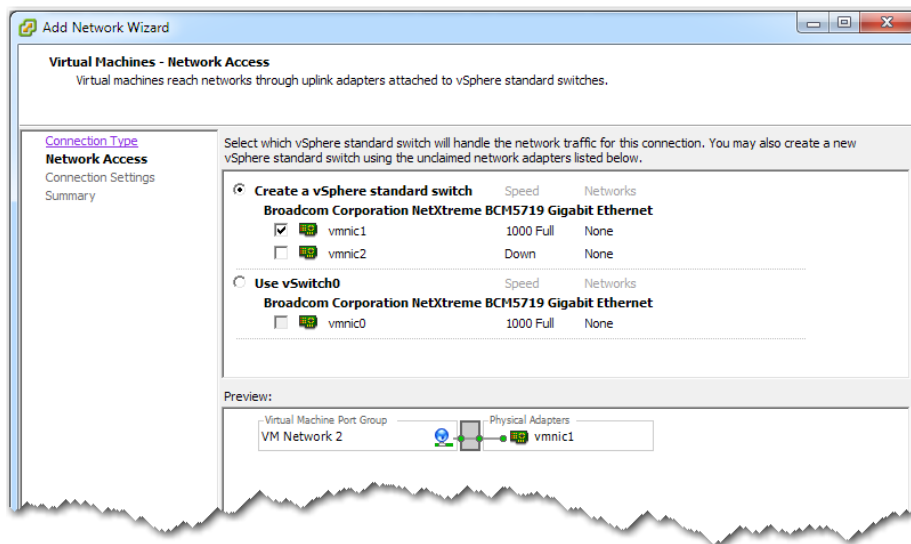
- a. In the vSphere client navigation pane, select the host, and then go to the **Configuration** tab, and click **Add Networking**.



The Connection Type screen appears. Make sure that **Virtual Machine** is selected.



- b Click **Next**. The Virtual Machines - Network Access page appears.

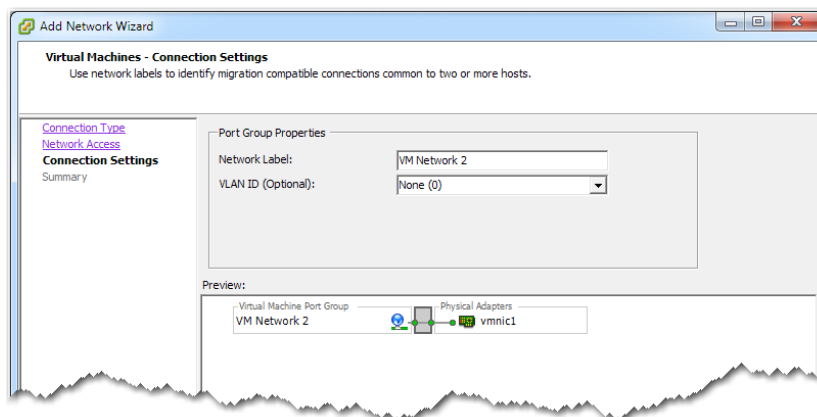


You can choose among 3 network adapters:

|               |                                 |
|---------------|---------------------------------|
| <b>vmnic0</b> | Router's PCIe console interface |
| <b>vmnic1</b> | Router's MGF VLAN interface     |
| <b>vmnic2</b> | UCS-E GE2 external interface    |

Best practice, however, is to use **vmnic1**.

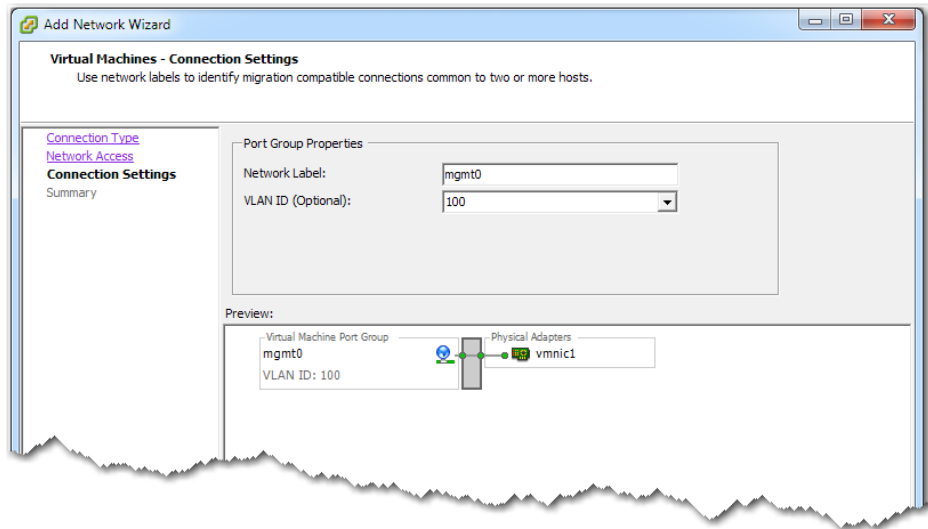
In this example, we select **vmnic1**, and click **Next**. The Connection Settings page appears.



c. Make the following changes:

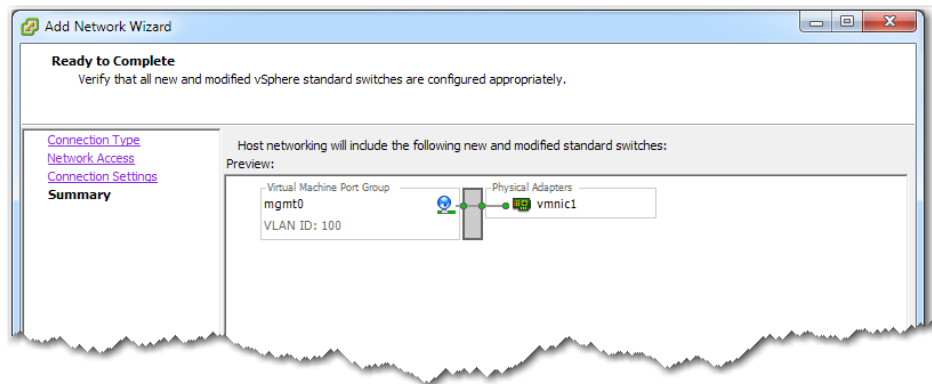
- In the **Network Label** field, enter `mgmt0`.
- Because **vmnic1** is mapped to the router's internal MGF VLAN interface on the UCS-E blade, you must enter that same VLAN value in this **VLAN ID** field. In our example, this value is `100`.

However, if you used **vmnic0** or **vmnic2** as the network adapter, then leave the **VLAN ID** field set to **None (0)**.



Click **Next**.

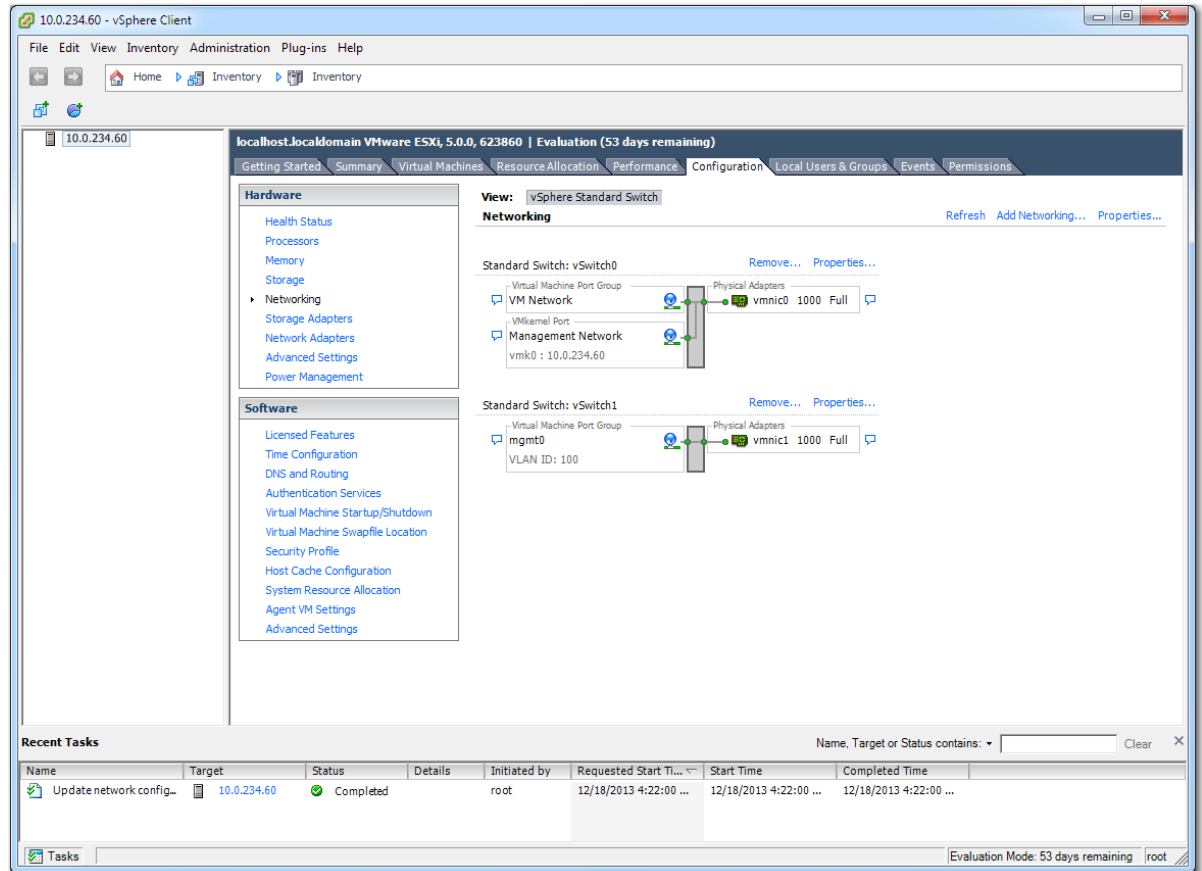
The Ready to Complete page appears.





- d Click **Finish**.

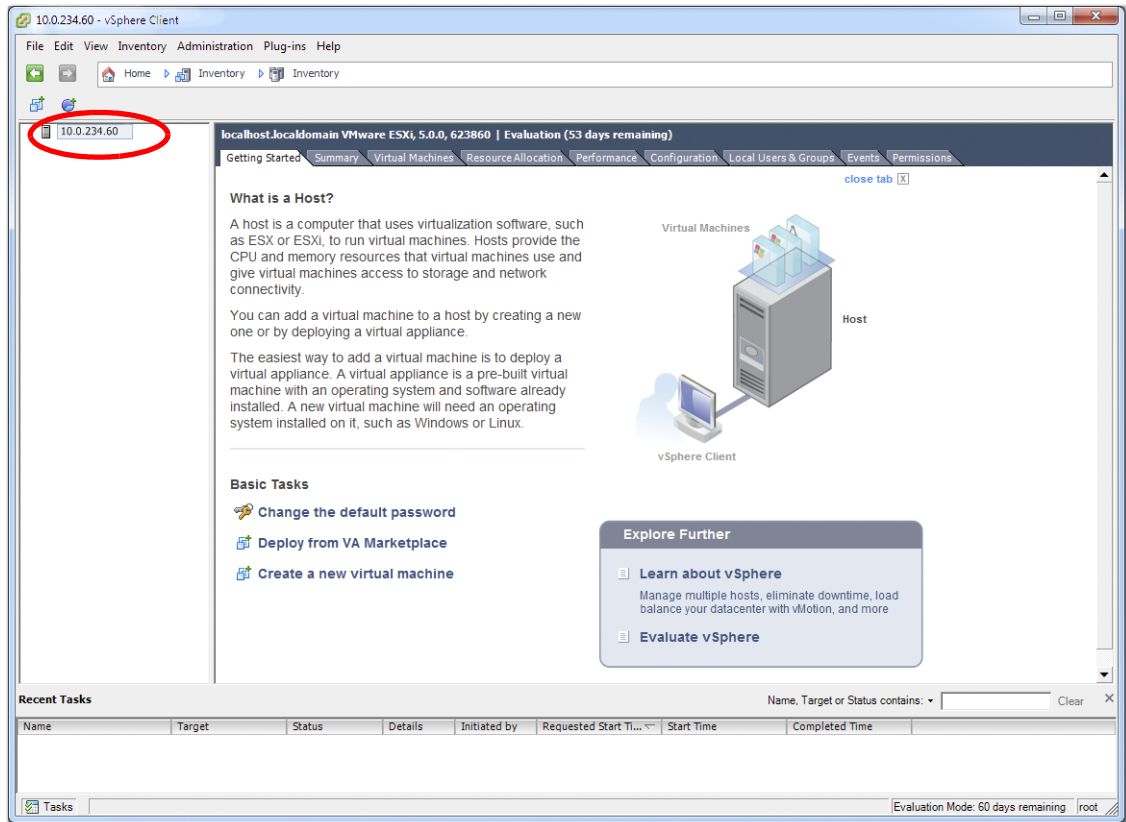
The vSphere client's **Configuration** tab now reflects the addition of **mgmt0**.



### 3 Deploy the VX virtual appliance's OVF template

- a. Launch the vSphere client, enter the IP address for the VMware vSphere host.

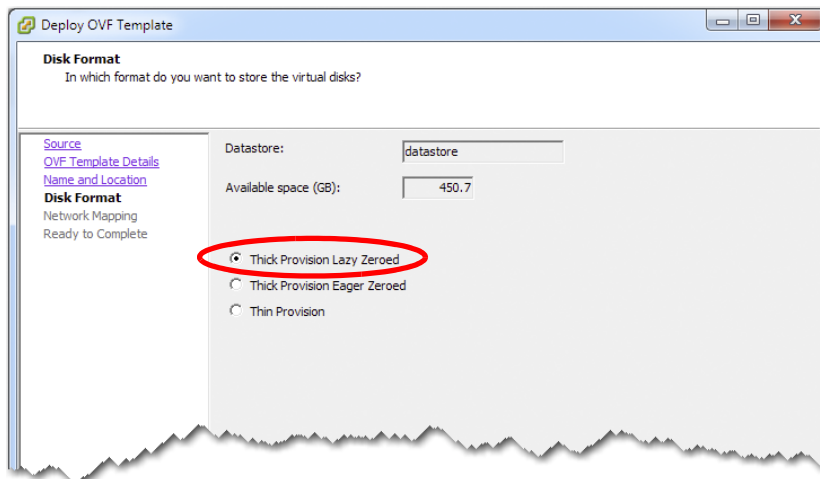
The host interface appears.



- b. From the **File** menu, select **Deploy OVF Template**, and follow the steps in the wizard.

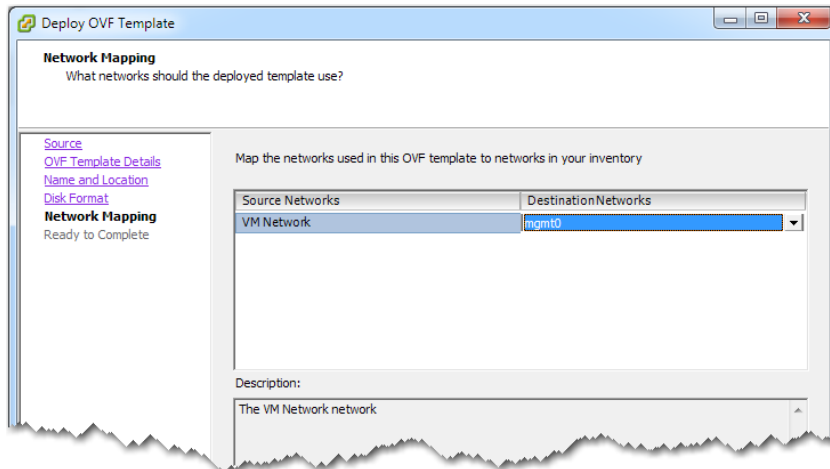
**NOTE:** On the Name and Location page, we changed the virtual appliance's default name to **MySilverPeak**, to make this example more generic.

- c. On the Disk Format page, make sure to select **Thick Provision Lazy Zeroed**.



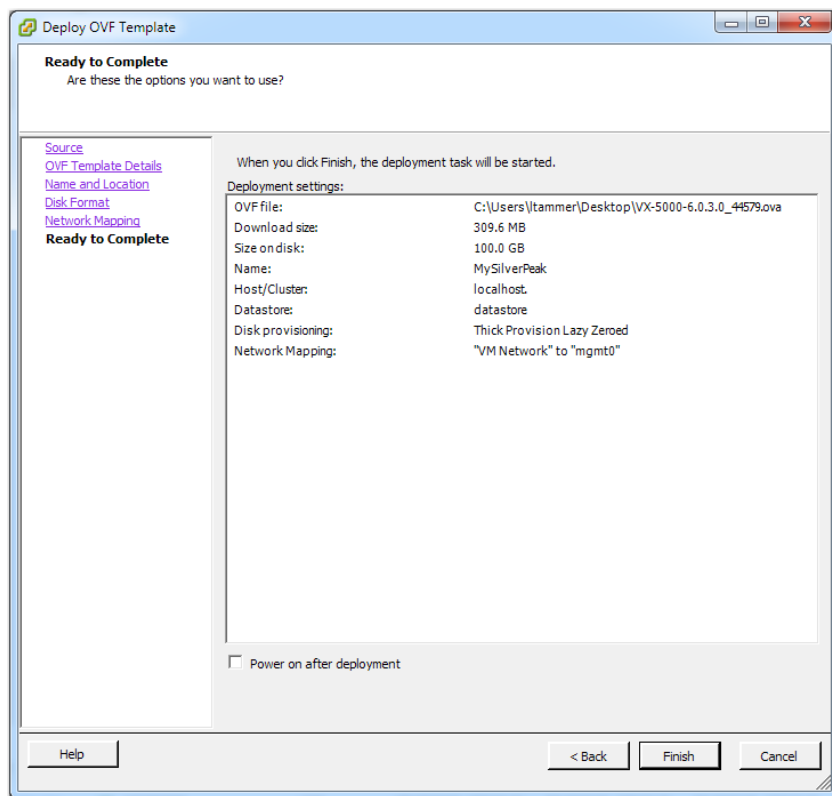
Click **Next**. The Network Mapping page appears.

- d From the Destination Networks list, select **mgmt0**.



Click **Next**.

- e When the Ready to Complete page appears, go to the bottom of the page and click **Finish**.

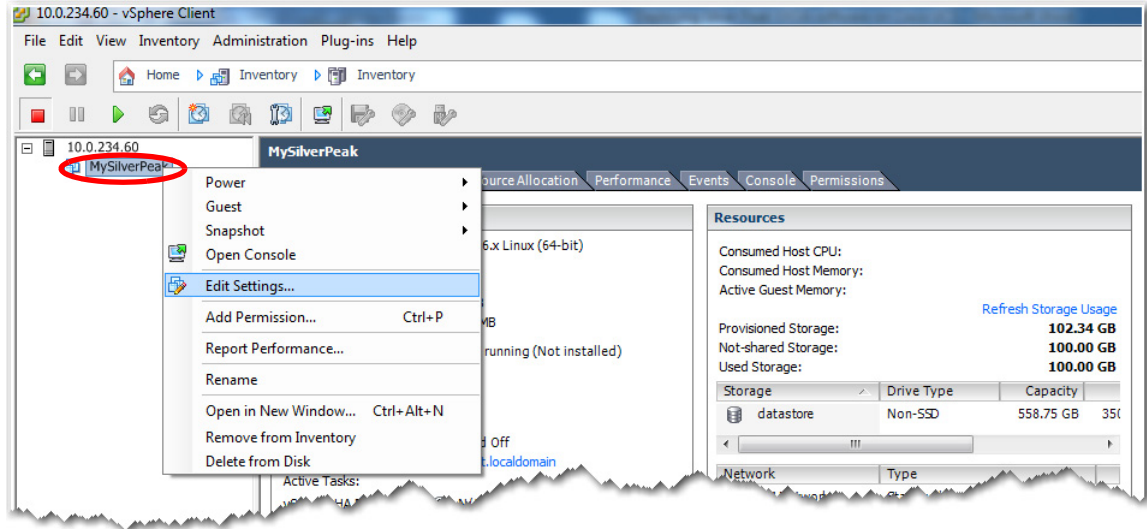


The Silver Peak appliance deploys.

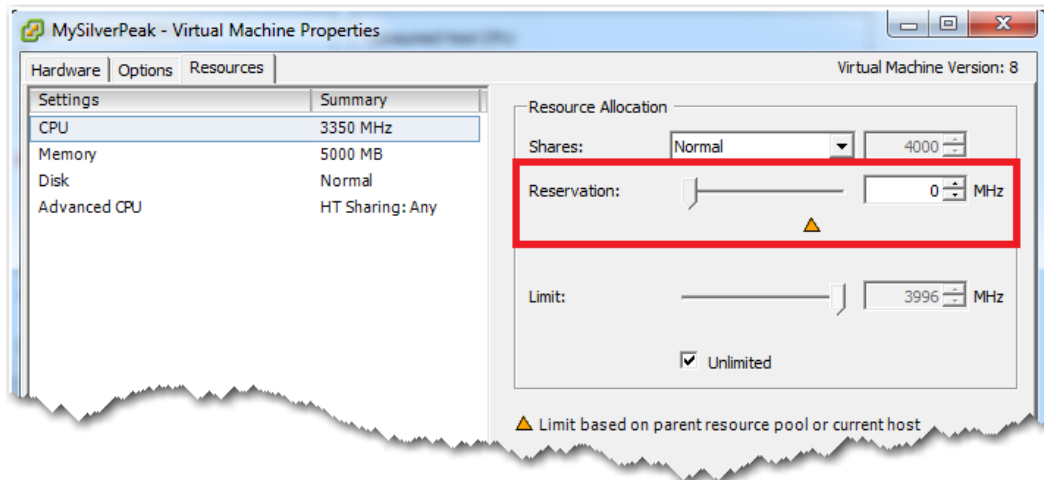
## 4 Configure the Resource Allocation Reservation

If you're deploying on a UCS-E 140S (single-wide blade), then you must change the CPU reservation of the Silver Peak virtual appliance to 0 (zero).

- a. In the vSphere Client, select the newly deployed virtual appliance and right-click to select **Edit Settings**.



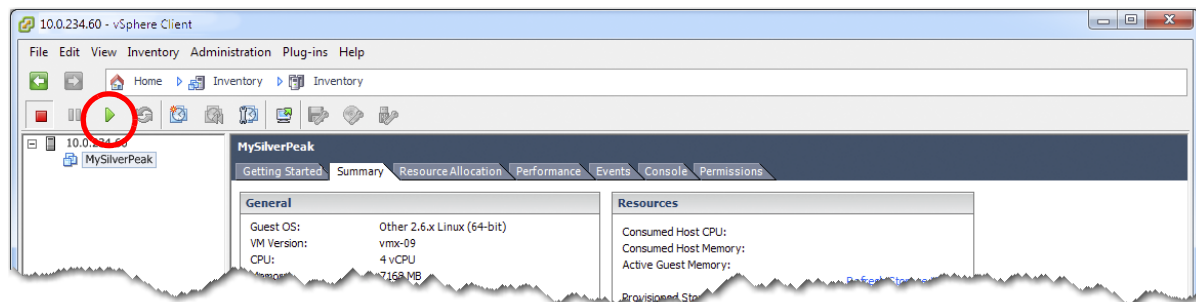
- b. When the Virtual Machine Properties window appears, select the **Resources** tab and set **Reservation** to **0 MHz**.



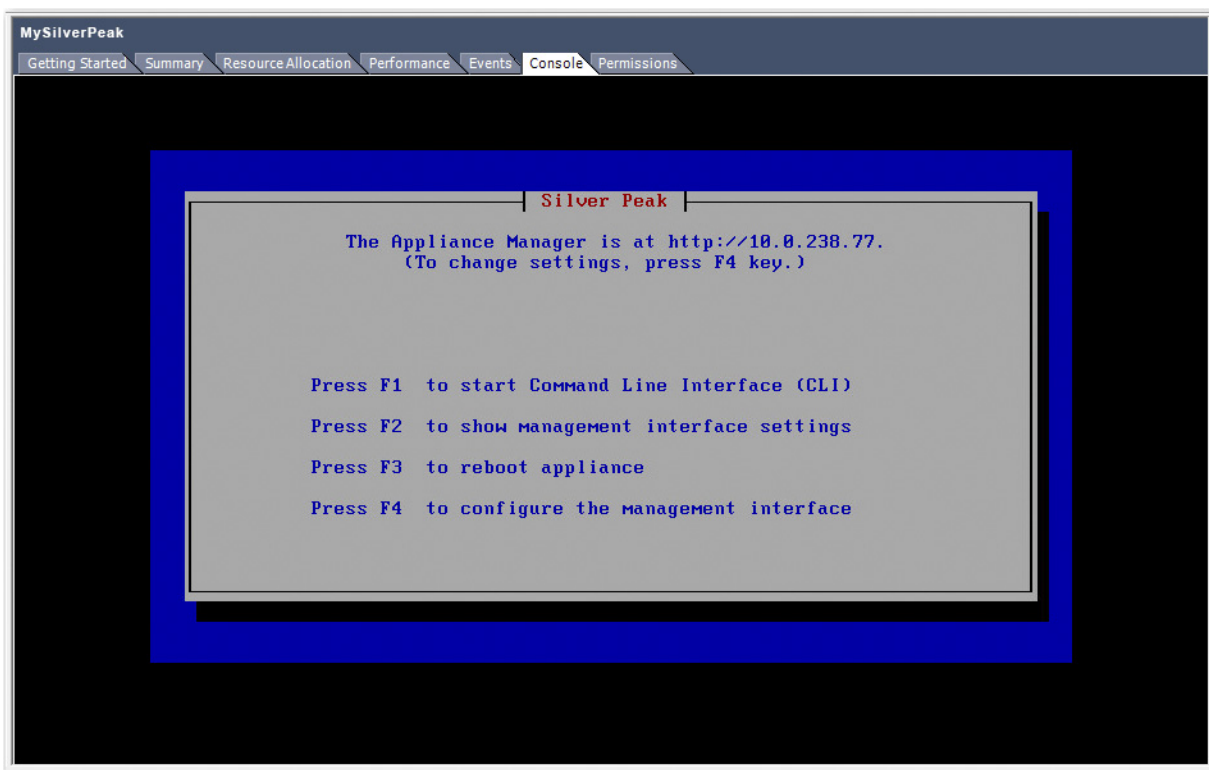
Click **OK**. The window closes.

## 5 Establish connectivity to the virtual appliance

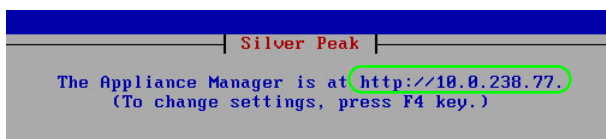
- a. In the vSphere Client, select the newly deployed virtual appliance and click the green arrow  to power on.



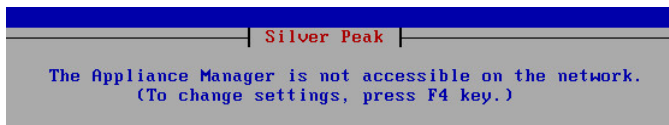
- b. Click the **Console** tab. The Silver Peak Console User Interface appears.



- c. The next task is to determine the virtual appliance's IP address:
- **If you're using DHCP**, the virtual appliance IP address displays in Silver Peak's Console User Interface.



- **If you're not using DHCP**, then you must configure the static IP address and default gateway.



In the virtual appliance console, press function key, **F4**, and complete the remaining steps.

When prompted to choose the type of management interface, select **Static** (as opposed to **DHCP**).

After selecting **Apply**, you can review the settings by selecting function key, **F2**.

- 
- d. To verify connectivity, press function key, **F1**, and enter the following command sequence:

```
[vx-appliance] > enable [ENTER]
```

```
[vx-appliance] # show ip default-gateway [ENTER]
```

```
[vx-appliance] # ping <default-gateway> [ENTER]
```

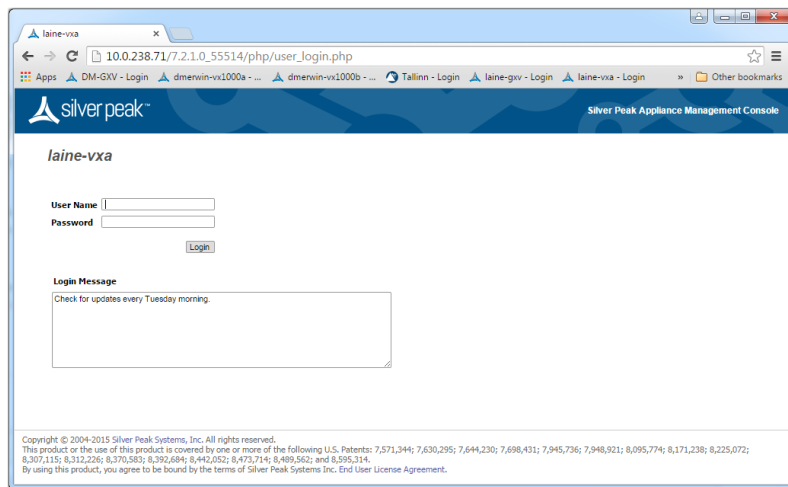
To stop the pinging, enter **CTRL-C**.

You are now ready to complete the Silver Peak virtual appliance initial configuration wizard.

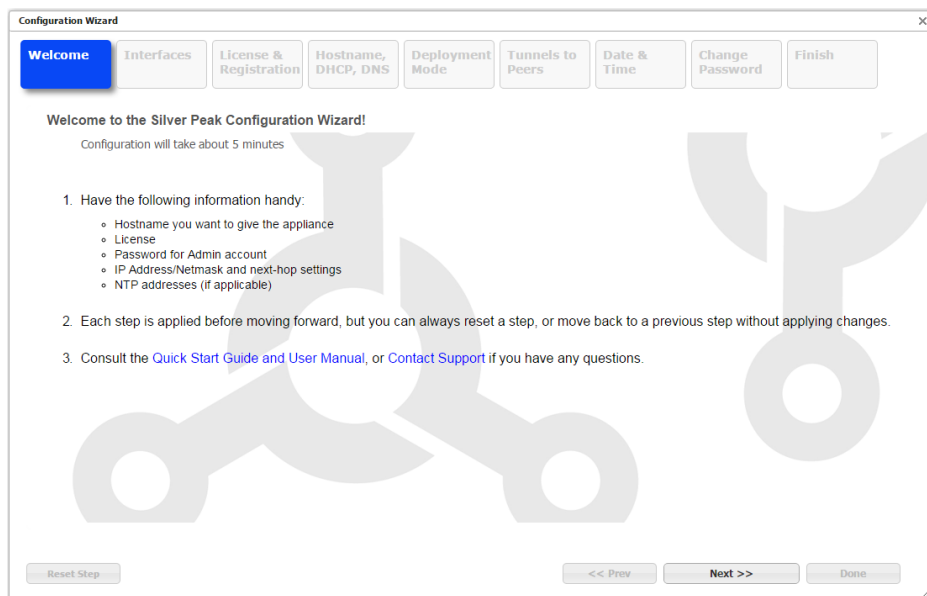
---

## 6 Run the Appliance Manager initial configuration wizard

- a. In a browser, enter the IP address that you just discovered or configured. The Silver Peak Appliance Management Console login page appears.



- b. For both the **User Name** and **Password**, enter **admin**. The initial configuration wizard appears.



- c. Complete the remaining wizard screens.
- d. On the last wizard screen, click **Apply**. When the virtual appliance asks permission to reboot, allow it. The Appliance Manager takes a few minutes to reboot and return to the login page.

You are now ready to start using the appliance.