



Integral Horsepower (IHP) GENERAL PURPOSE MOTORS

Inverter Suitable 10:1 Variable Torque, 4:1 Constant Torque

HORSEPOWER: 1 - 15 HP

PHASE: Three Phase

RPM: 1800 RPM

VOLTAGE: 208-230/460

ENCLOSURE:

- Open Drip-Proof (ODP)
- Totally Enclosed, Fan Cooled (TEFC)

INSULATION: Class F

EFFICIENCY: NEMA Premium® Efficient

NAMEPLATE: CE Mark on nameplate (180 frame or larger)

AGENCY: UL® Recognized and CSA® Certified

WORLD MOTOR® FEATURES:

- Both 60 Hz and 50 Hz operations (without derating motor)
- 250 Frame and larger ratings suitable for wye-start delta run or across-the-line starting
- Energy Efficient per NEMA (2003) MG1, 12-10
- Meets EPA 92 (USA), NOM 74 (Mexico), and CSA® C390 (Canada) efficiency levels
- AllGuard® Motor Quality System



ODP



TEFC

US Motors Model #	SH Item #	HP	RPM	Voltage	Frame	Total Length	Full Load Efficiency	Full Load Amps	Service Factor
Open Dripproof (ODP)									
For pumps, fans, compressors, material handling, and other general purpose applications where contaminants are minimal.									
P063AGU1308015B	D1P2AH	1	1725	208-230/460	56H	12.4	83.5	3.2 - 3.0 / 1.5	1.15
FC89	D1P2D	1	1800	208-230/460	143T	12.8	85.5	3.2 - 3.1 / 1.5	1.15
FC92	D32P2D	1-1/2	1800	208-230/460	145T	12.8	86.5	4.4 - 4.2 / 2.1	1.15
FC95	D2P2D	2	1800	208-230/460	145T	12.8	86.5	5.9 - 5.5 / 2.8	1.15
FH79	D3P2D	3	1800	208-230/460	182T	15.0	89.5	8.4 - 7.8 / 3.9	1.15
FH82	D5P2D	5	1800	208-230/460	184T	15.0	89.5	13.8 - 13.0 / 6.5	1.15
R341	D7P2D	7-1/2	1800	208-230/460	213T	16.0	91.0	20.2 - 18.5 / 9.3	1.15
DB51	D10P2D	10	1800	208-230/460	215T	17.5	91.7	26.3 - 23.8 / 11.9	1.15
DT58	D15P2D	15	1800	208-230/460	254T	22.6	93.0	40.0 - 37.0 / 18.3	1.15
Totally Enclosed, Fan Cooled (TEFC) UNIMOUNT®									
For general industrial equipment including fans, blowers, compressors, pumps and direct connected equipment.									
CG03	U5P2D	5	1800	208-230/460	184T	16.9	90.2	13.6 - 12.3 / 6.2	1.25

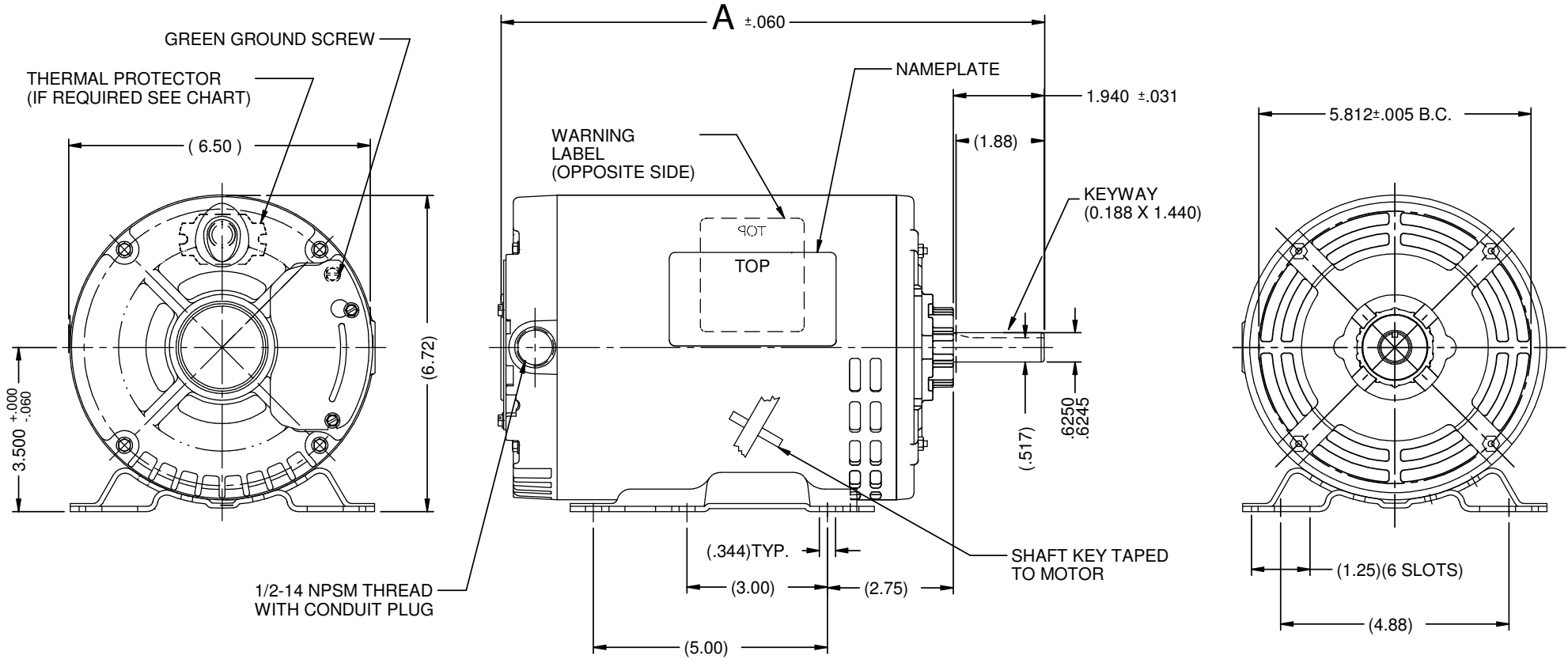
NOTE: 60/50 Hz rated with no derate on HP; 230/460 volt 60 Hz ratings operate on 190/380 volt 50 Hz, 460V 60 Hz ratings operate on 380 volt 50Hz. Full 60 & 50 Hz data on nameplate.

VAR	MODEL	CUSTOMER	CAT. NO.	A	B	C	D	HP	VOLTS	SF	AMPS	HZ	RPM	CONN VOLTS	PROT.	DESCRIPTION / REMARKS
001	P63AGU-1308	USEM	D1P2AH	12.39	----	----	----	1.0	208-230/460	1.15	3.2-3.0/1.5	60	1725	--	NONE	N56H, ODP
002	P63JZAHU-1333	USEM	D34PA2AH	11.89	----	----	----	3/4	208-230/460	1.25	2.3-2.2/1.16	60	1725	--	AUTO	N56H, ODP
003	P63AGT-1307	USEM	D12P2AH	11.39	----	----	----	1/2	208-230/460	1.25	1.99-1.9/ .98	60	1725	--	NONE	N56H, ODP
004	P63FZC-1306	USEM	D2P2AH	12.89	----	----	----	2.0	208-230/460	1.15	6.6-6.6/3.3	60	1725	--	NONE	N56H, ODP
005	P63FTC-1355	USEM	D14P2AH	10.89	----	----	----	1/4	208-230/460	1.35	1.1-1.1/0.5	60	1725	--	NONE	N56H, ODP
006	P63GCK-1358	USEM	D13P1AH	10.89	----	----	----	1/3	208-230/460	1.35	1.7-1.8/0.9	60	3450	--	NONE	N56H, ODP
007	P63AJV-1362	USEM	D32P2AH	12.89	----	----	----	1.5	208-230/460	1.15	5.0-4.8/2.4	60&50	1725&1425	--	NONE	N56H, ODP

REV D

REV D

REV D



NIDEC MOTOR CORPORATION 21-Jul-15

REFER TO S.E.I.M. 24-1

REVISION RECORD FOR: ECO - E23421	
CHANGED VALUES IN AMPS, HZ, RPM OF VARIABLE 007.	
ISSUED BY: A. DEL ANGEL	ENGINEER APPROVED: T. BOSSALLER

TOLERANCES ON DIMENSIONS (UNLESS OTHERWISE SPECIFIED)	
INCHES .XX = ±.010 .XXX = ±.005	mm
ANGLES X° = ±1°	

NIDEC MOTOR CORPORATION			
INFORMATION DISCLOSED ON THIS DOCUMENT IS CONSIDERED PROPRIETARY AND SHALL NOT BE REPRODUCED OR DISCLOSED WITHOUT WRITTEN CONSENT OF NIDEC MOTOR CORPORATION			
TITLE		CODE	REVISION DATE: 21-JUL-15
CUSTOMER DETAIL DRAWING		ITEM NO. 803206	SHEET NUMBER 1 OF 4
DWG SIZE B		REV D	DWG SIZE B