



H9MPV

2-Stage Variable Speed 90

Flexibility

- Dual Certified venting (1 or 2 pipe), Direct Vent Furnace
- 40" high with wider cabinets, for ease of installation.
- Factory shipped as natural gas, with LP Gas conversion kits available.
- Four position - upflow/downflow/horizontal installation.
- Vent pipe can be run horizontally or vertically.
- Internal condensate drain system.

Service

- Self diagnostics.
- Entire blower assembly mounted on rails.

Comfort

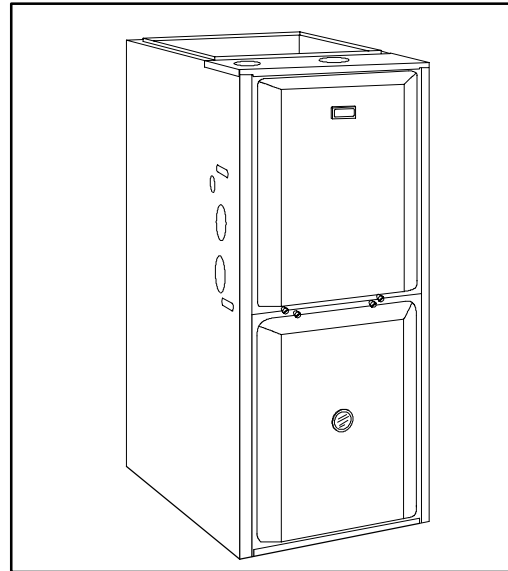
- Adjustable timed blower Off delay.
- Thermal lined, one piece steel cabinet for noise reduction.
- Insulated blower compartment.
- 24 and 115VAC humidifier terminals.
- Electronic air cleaner terminal.
- Dehumidification option.

Efficiency

- 92.1% AFUE efficiency range.
- Two stage gas valve operation.
- Two stage integrated control.
- BPM Variable speed DC motor.
- Induced draft blower.
- In-shot burners.

Quality

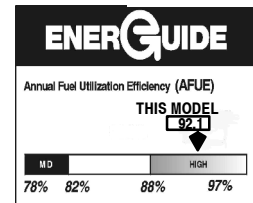
- RPJ III Stainless steel heat exchanger.
- Stainless steel secondary heat exchanger.
- High temperature limit control prevents overheating.
- Direct ignition with Silicon Nitride ignitor.
- Flame roll-out sensors standard.
- External filter rack with permanent filters.
- Solid doors.
- Parts warranty 7 years.
- No Hassle 10 year replacement warranty.



Representative drawing only, some models may vary in appearance.

WARNING

This furnace is not designed for use inside mobile homes, trailers, or recreational vehicles. Such use could result in property damage, bodily injury, and/or death.



UPFLOW/DOWNFLOW/HORIZONTAL (NATURAL GAS)

Model Number	Heat Exchangers *	Dimensions H x W x D (In.)	Input (MBTUH)	Efficiency AFUE	Cooling Cap. @ .5 In. W.C.	Price
H9MPV050F12C	Lifetime	40 x 19 ¹ / ₈ x 29	50	92.1	1.5 - 3.0 TON	
H9MPV075F12C	Lifetime	40 x 19 ¹ / ₈ x 29	75	92.1	1.5 - 3.5 TON	
H9MPV100J20C	Lifetime	40 x 22 ³ / ₄ x 29	100	92.1	3 - 5.0 TON	
H9MPV125L20C	Lifetime	40 x 24 ¹ / ₂ x 29	125	92.1	3 - 5.0 TON	

* LIMITED LIFETIME WARRANTY.

FURNACE SPECIFICATIONS

Model Number	*9MPV050F12	*9MPV075F12	*9MPV100J20	*9MPV125L20
INPUT HIGH FIRE (BTUH) LOW FIRE (BTUH)	50,000 35,000	75,000 52,500	100,000 70,000	125,000 87,500
HTG. CAP. HIGH FIRE (BTUH) LOW FIRE (BTUH)	46,000 32,000	70,000 48,000	93,000 65,000	118,000 82,000
AFUE % (ICS)	92.1	92.1	92.1	92.1
TEMP. RISE RANGE High Fire (°F) Low Fire (°F)	35-65 35-65	40-70 40-70	40-70 40-70	40-70 40-70
VENT SIZE^	2" OD	2" - 3" OD	2" - 3" OD	3" OD
VOLTS/HZ/PH	115/60/1	115/60/1	115/60/1	115/60/1
RATING PLATE AMPS.	9.5	11.4	14.6	15.4
MIN./MAX. VOLTAGE	104/127	104/127	104/127	104/127
TRANSFORMER (V.A.)	40	40	40	40
GAS PIPE SIZE (IN.)	1/2	1/2	1/2	1/2
COOLING CAP. (TONS)	3.0	3.0	5.0	5.0
HIGH ALTITUDE PRESSURE SWITCH	1013165	1013165	1013165	1013157
FILTER SIZE (IN.)	16X25X1(1)	16X25X1(1)	16X25X1(2)	16X25X1(2)
DIMENSIONS (in.) WIDTH X DEPTH X HEIGHT	19 ¹ / ₈ x 29 x 40	19 ¹ / ₈ x 29 x 40	22 ³ / ₄ x 29 x 40	24 ¹ / ₂ x 29 x 40
WEIGHT (Lbs.)	150	168	187	203

^ Vent size may vary depending on length, number of elbows, standard vent or direct vent. See Installation Instructions.

* Denotes Brand (T, H or C)

MODEL NUMBER IDENTIFICATION GUIDE

	*	9	M P	V	0 7 5	F	1 2	C	#
<p>Brand Identifier * = Brand</p>									<p>Engineering Rev. Denotes minor changes</p>
<p>Model Efficiency 8 = Non-Condensing, 80+% Gas Furnace 9 = Condensing, 90+% Gas Furnace</p>									<p>Marketing Digit Denotes major change</p>
<p>Installation Configuration UP = Upflow DN = Downflow UH = Upflow/Horizontal HZ = Horizontal DH = Downflow/Horizontal MP = Multiposition, Up/Down/Horizontal</p>									<p>Cooling Airflow 08 = 800 CFM 12 = 1200 CFM 14 = 1400 CFM 16 = 1600 CFM 20 = 2000 CFM</p>
<p>Major Design Feature 1 = One (Single) Pipe N = Single Stage 2 = Two Pipe P = PVC Vent D = 1 or 2 Pipe T = Two Stage L = Low NOx V = Variable Speed</p>									<p>Cabinet Width B = 15.5" Wide F = 19.1" Wide J = 22.8" Wide L = 24.5" Wide</p>
									Input (Nominal MBTUH)

ACCESSORIES

Model Number	Description	Used With Models
NAHA002NG (1172961*)	Gas Conversion Kits (2-Stage) - LP (Propane) to natural gas conversion kit. Allows field conversion to natural gas.	*9MPV
NAHA002LP (1172959*)	Gas Conversion Kits (2-Stage) - Natural gas to LP (propane) conversion Kit (includes low pressure switch). Allows field conversion to LP (propane) gas.	*9MPV
NAHA001FF	Filter Kits - External filter frame. 16" x 25"	Side Return (All Furnaces) Bottom Return (All "F" 19 ¹ / ₈ " Furnaces under 1600 CFM)
NAHA001FP	External filter frame. 16" x 25" (Bulk Pack Kit - Qty 10)	
NAHA002FF	Filter Kits - Bottom return filter frame kit 20" x 25"	(All "J" 22 ³ / ₄ " Furnaces)
NAHA002FP	Bottom return filter frame kit 20" x 25" (Bulk Pack Kit - Qty 10)	
NAHA001TK	Duct Standoff Filter Kit - To adapt 20" x 25" filter for single side return.	Side Return (All single return applications with 1600 CFM or greater) Bottom Return (All "F" 19 ¹ / ₈ " Furnaces under 1600 CFM)
NAHA001NK 612833 ^	Condensate Neutralizer Kit - for condensing gas furnaces	All *9MPV Furnaces if Required
NAHH002SB	Combustible Floor Subbase - Subbase Furnace ONLY: All 19 ¹ / ₄ " wide furnace models	*9MPV050/075
NAHH003SB	Combustible Floor Subbase - Subbase Furnace ONLY: All 22 ³ / ₄ " wide furnace models	*9MPV100
NAHH010SB	Combustible Floor Subbase - Subbase Furnace ONLY: All 24 ¹ / ₂ " wide furnace models	*9MPV125
NAHH005SB	Subbase - Furnace w/19 ¹ / ₄ " cased coil	*9MPV050/075 Counterflow furnace w/19 ¹ / ₄ " cased coil
NAHH006SB	Subbase - Furnace w/22 ³ / ₄ " cased coil	*9MPV100 Counterflow furnace w/22 ³ / ₄ " cased coil
NAHH009SB	Subbase Furnace w/24 ¹ / ₂ " cased coil	*9MPV125 Counterflow furnace w/24 ¹ / ₂ " cased coil
1013165^	High Altitude Pressure Switch Kit	*9MPV050, 075 & 100
1013157^	High Altitude Pressure Switch Kit	*9MPV125
NAHA001CV 1011129^	3" Concentric Vent Kit - allows single wall penetration for 2 pipe direct vent applications (90+).	*9MPV100/125
NAHA002CV	2" Concentric Vent Kit - allows single wall penetration for 2 pipe direct vent applications (90+).	*9MPV050/075
NAHA001CA	Coil Adapter for Downflow Furnaces	All Downflow Models
NAHA002WL	To replace Warning Labels, Operating Instructions & Wiring Labels on Blower Door when needed	*9MPV

^ Must be ordered from Service Parts

* Denotes Brand

Heating, Cooling & Continuous Airflow Settings

Continuous Blower (CFM) @ 0.10" Static

Lo Heat Air Temperature Adjustment (° F)**

Switch Settings		Furnace Model			
#1	#2	50K	75K	100K	125K
0*	0*	560	576	766	888
0	1	691	697	955	1008
1	0	819	825	1139	1195
1	1	948	931	1327	1373

*Factory Setting

Hi Heat Air Temperature Adjustment (° F)**

Switch Settings			Furnace Model			
#3	#4	#5	50K	75K	100K	125K
0*	0*	0*	0	0	0	0
0	0	1	+6	+3	+4	+5
0	1	0	+6	+3	+4	+5
0	1	1	+14	+6	+9	+12
1	0	0	+17	+11	+12	+13
1	0	1	-7	-4	-2	-3
1	1	0	-10	-6	-6	-6
1	1	1	-15	-4	-9	-5

*Factory setting

**Approximate air temperature change from factory setting @ 0.20" static on high heat).

MAX CFM's	
Filter Size	CFM
14" X 25"	1400
16" X 25"	1600
20" X 25"	2000
24" X 25"	2500
Max CFM based on 600 FPM	

Switch Settings			Furnace Model			
#3	#4	#5	50K	75K	100K	125K
0*	0*	0*	0	0	0	0
0	0	1	+4	+2	+1	+8
0	1	0	+4	+2	+1	+8
0	1	1	+10	+5	+5	+14
1	0	0	+13	+7	+8	+17
1	0	1	-5	-4	-3	-3
1	1	0	-8	-6	-7	-6
1	1	1	-16	-9	-11	-6

*Factory setting

**Approximate air temperature change from factory setting @ 0.20" static on high heat).

Cooling (CFM) @ 0.50" Static (1)

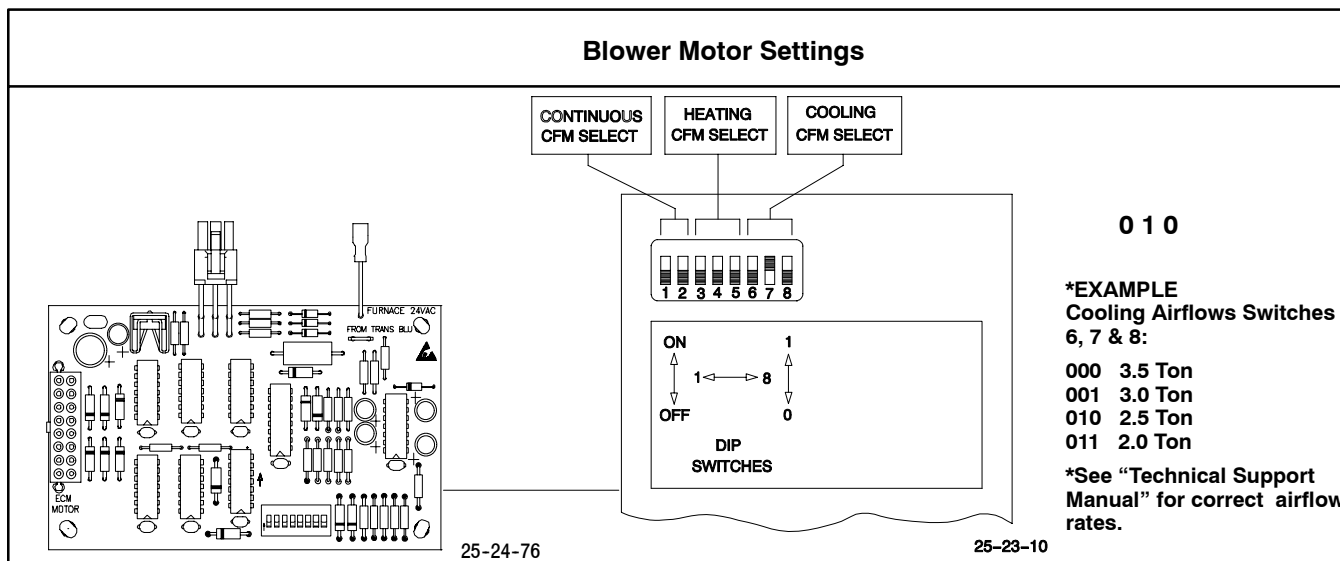
Switch Settings			Furnace Model			
#6	#7	#8	50K	75K	100K	125K
0*	0*	0*	1212	1392	2093	2082
0	0	1	1117	1197	1872	1829
0	1	0	1015	1104	1702	1798
0	1	1	914	1012	1541	1728
1	0	0	836	924	1305	1530
1	0	1	743	827	1063	1304
1	1	0	670	677	857	1103
1	1	1	593	572	751	893

NOTE: (1) Data based on Bottom Only or One Side return.

CFM - Cubic Feet per Minute airflow. Filter required for each return-air inlet. Airflow performance includes 1" washable (600 FPM max) filter media.

*Factory setting

Blower Motor Settings



Cooling Airflow Settings

Figure 1

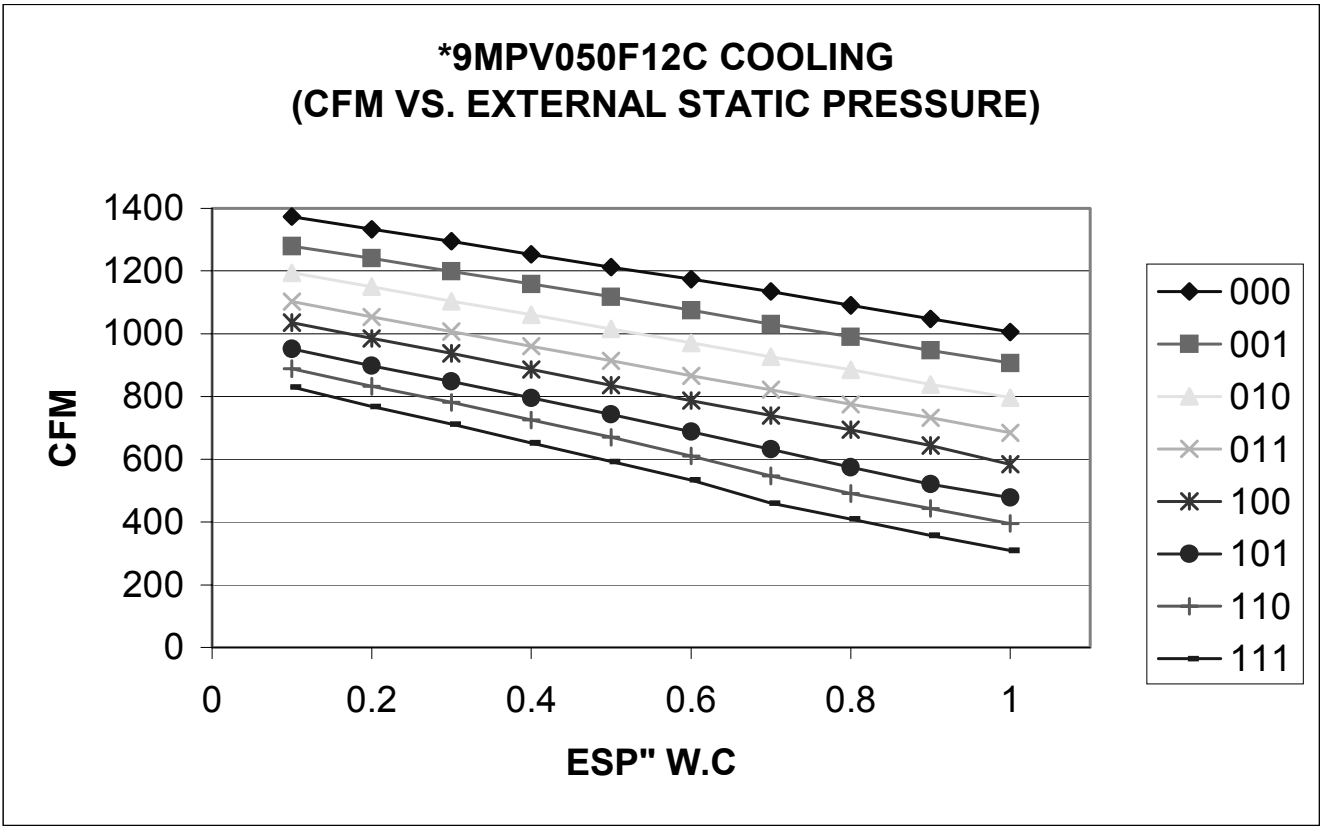
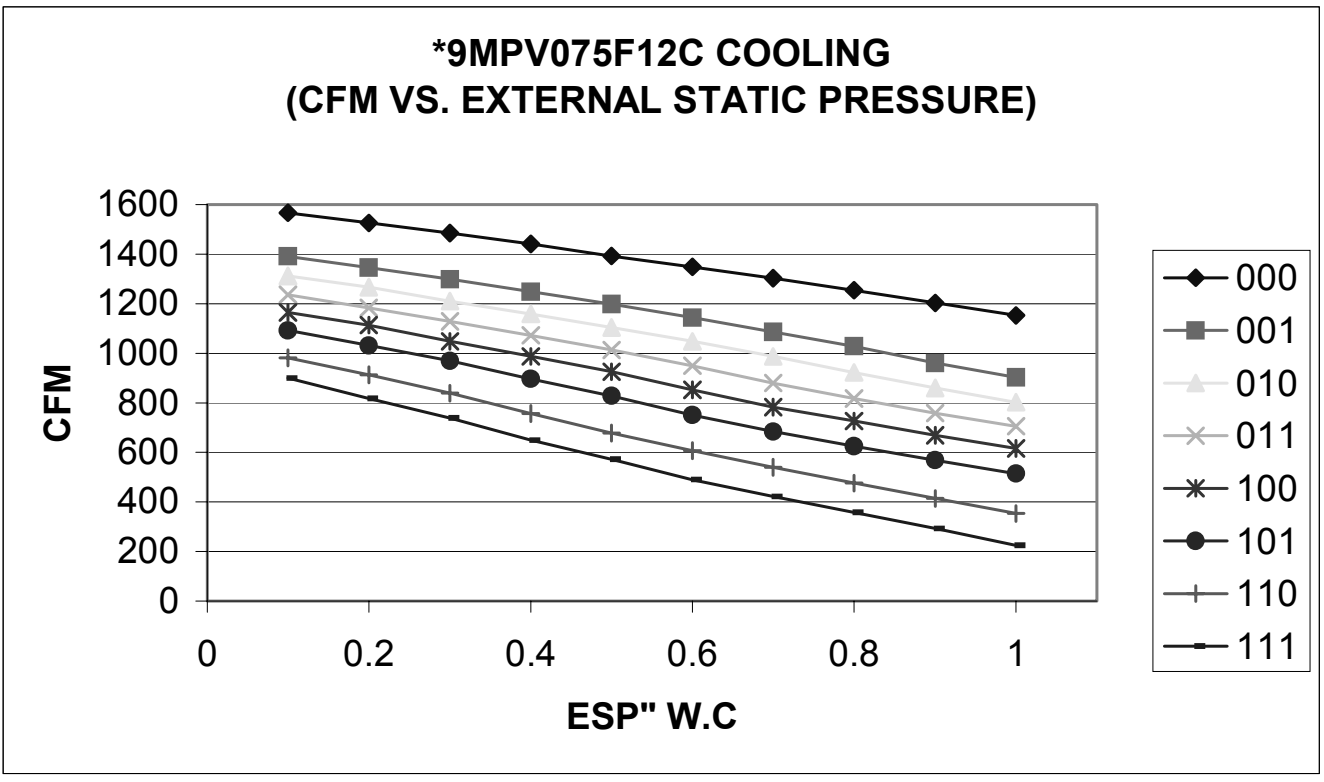


Figure 2



Circulation Air Blower Data - *9MPV

Cooling Airflow Settings

Figure 3

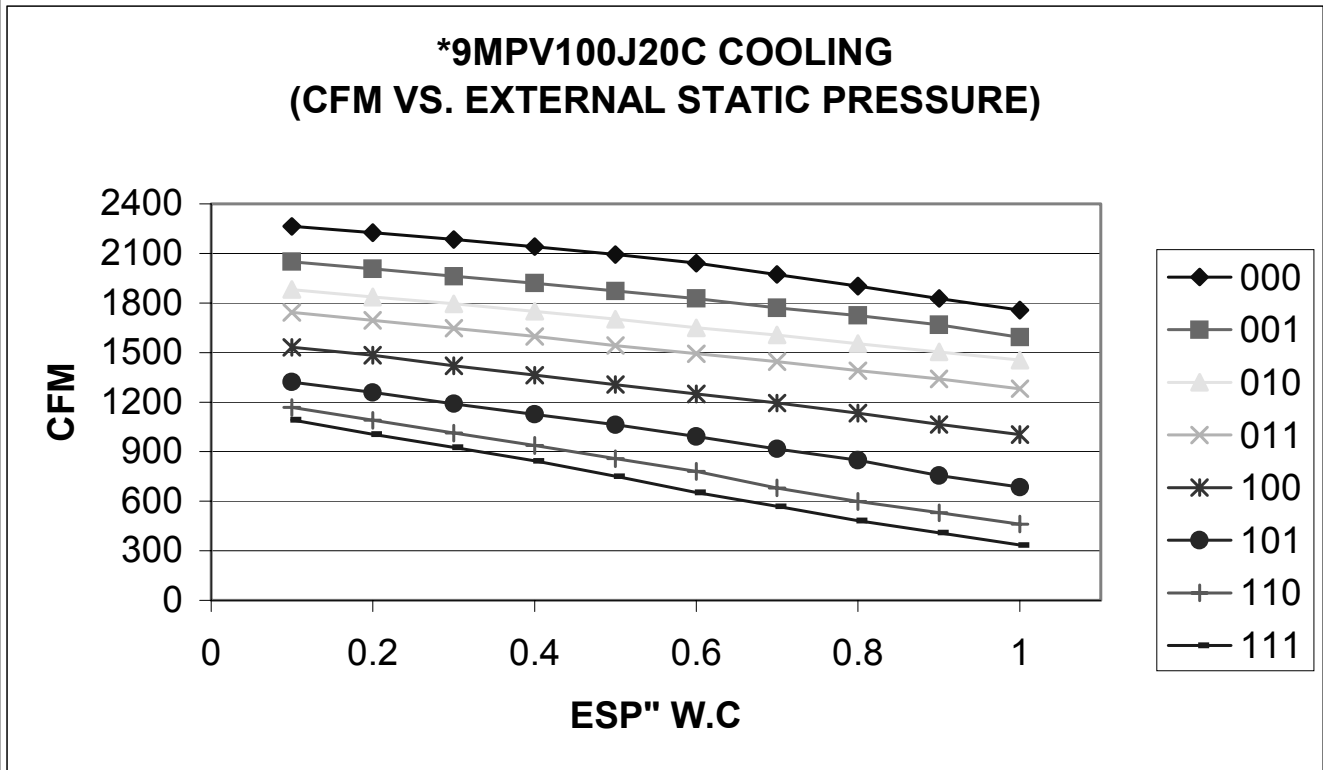
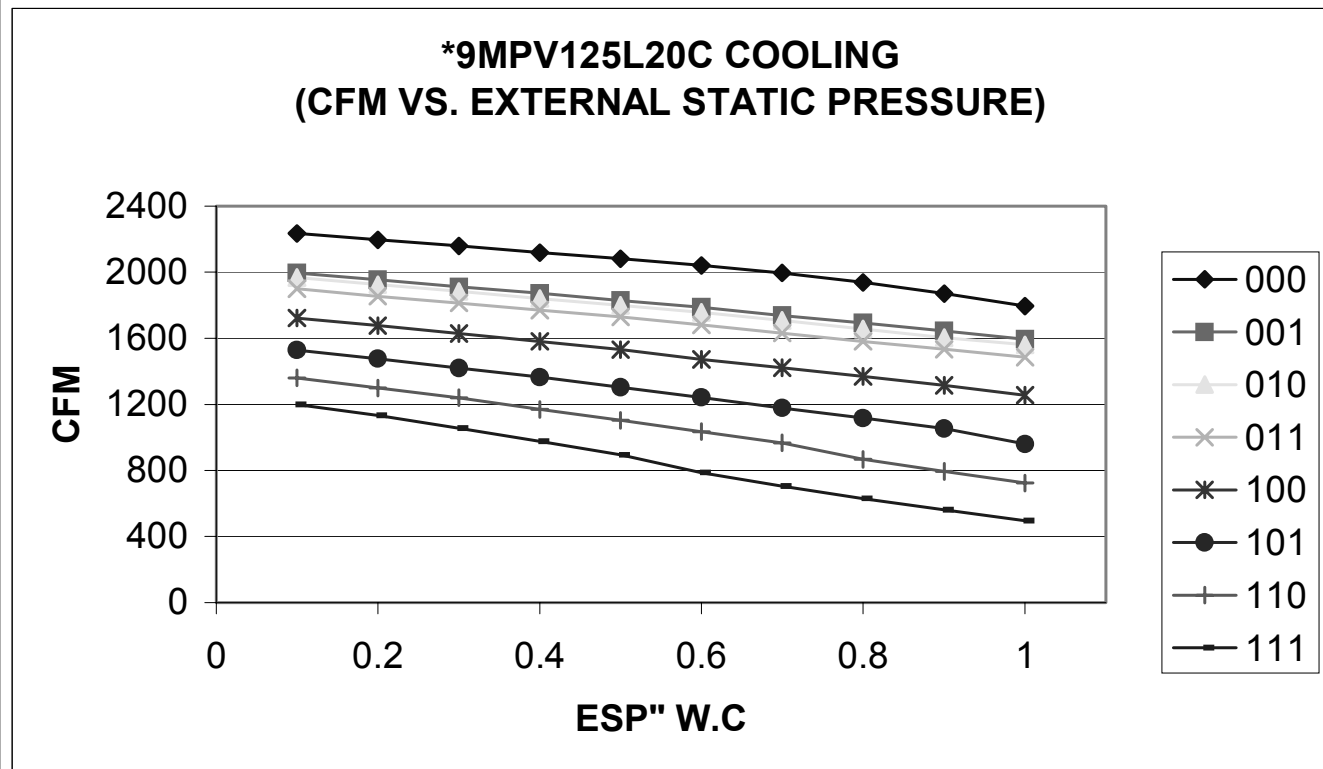
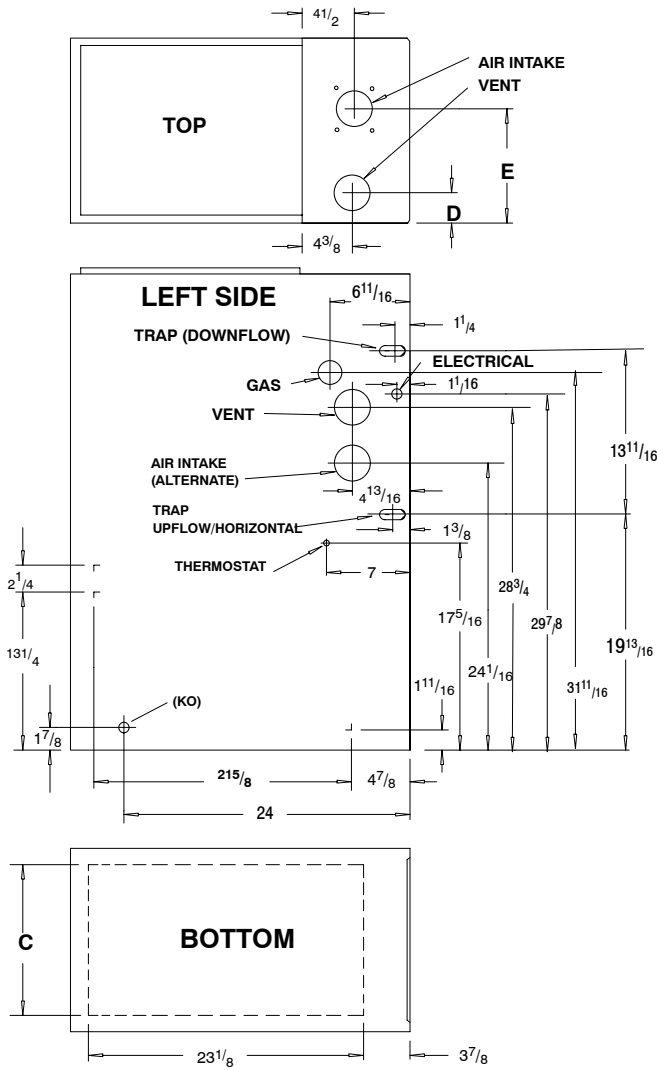


Figure 4

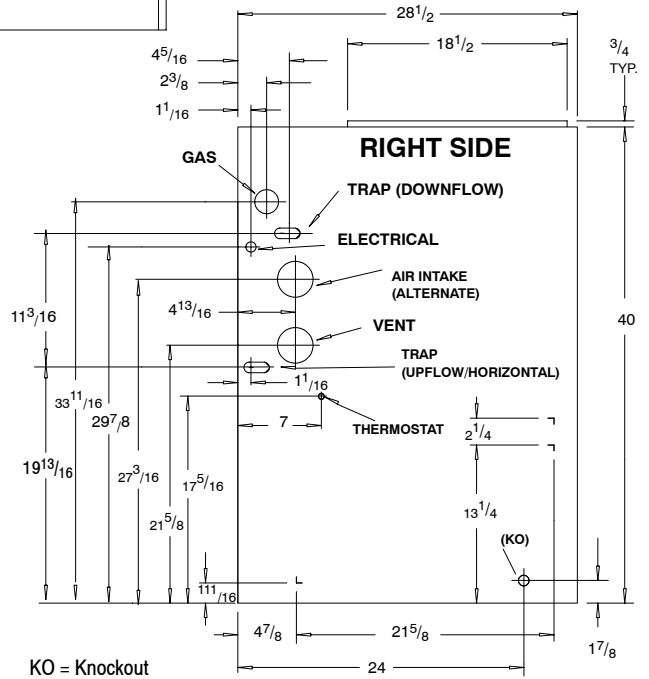
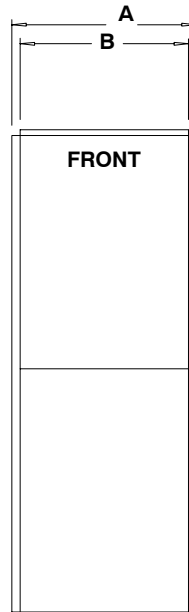


DIMENSIONS

Cabinet to Combustible Clearances						
TOP	BOT.	RH	LH	BACK	FRNT	FLUE
1"	0"	0"	0"	0"	3"	0"



ALL DIMENSIONS IN INCHES



25-23-36A

Unit Capacity	Cabinet		Bottom	Top	
	A	B	C	D	E
*9MPV050F12A	$19\frac{1}{8}$	$17\frac{5}{8}$	$14\frac{3}{4}$	$2\frac{1}{2}$	$9\frac{1}{2}$
*9MPV075F12A	$19\frac{1}{8}$	$17\frac{5}{8}$	$14\frac{3}{4}$	$2\frac{1}{2}$	$9\frac{1}{2}$
*9MPV100J20A	$22\frac{3}{4}$	$21\frac{1}{4}$	$18\frac{3}{4}$	$2\frac{5}{8}$	$11\frac{3}{8}$
*9MPV125L20A	$24\frac{1}{2}$	23	23	$2\frac{1}{4}$	$12\frac{1}{4}$

* Denotes Brand