

# ALL-MAKES ATTACHMENTS

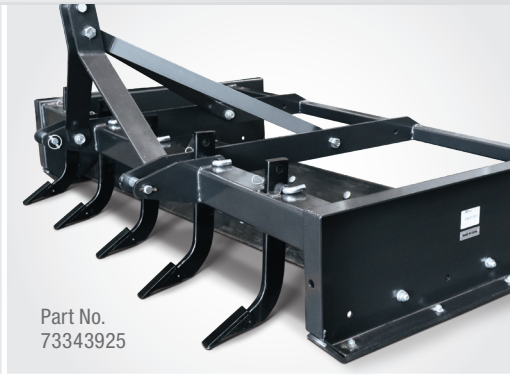
UNIVERSAL SKID STEER MOUNTS | EURO MOUNTS | THREE-POINT HITCH MOUNTS



Part No.  
73343923



Part No.  
73343938



Part No.  
73343925



Part No.  
73343917



Part No.  
PF3036LBO500JX

## ALL-MAKES ATTACHMENTS

CNH Industrial's All-Makes Attachments offering features universal skid steer, Euro and three-point hitch mount options – choices that are right for all of your customers' equipment needs.

## FORGED BALE SPEARS

### Single-Prong Bale Spear

**Standard Features:**

- Two stabilizer tines
- Conus Type 2 sleeves
- Easy stabbing and removal



Part No.  
BSS39EUROGX

Part No.  
BS3PTGX

PART NO.	MOUNT	TINE LENGTH / USABLE LENGTH	CAPACITY	WEIGHT
BSS39BO500GX	Universal Skid Steer	39" / 34"	2,000 lbs	148 lbs
BSS49BO500GX	Universal Skid Steer	49" / 44"	2,000 lbs	150 lbs
BSS39EUROGX	Alo/Euro	39" / 34"	2,000 lbs	148 lbs
BSS49EUROGX	Alo/Euro	49" / 44"	2,000 lbs	150 lbs
BS3PTGX	3-Point Hitch (Category 1 & 2)	39" / 34"	2,500 lbs	95 lbs

### Double-Prong Bale Spear

**Standard Features:**

- Works with round or square bales
- 30" tine spacing
- Easy stabbing and removal



Part No.  
BSD39BO500GX

PART NO.	MOUNT	TINE LENGTH / USABLE LENGTH	CAPACITY	WEIGHT
BSD39BO500GX	Universal Skid Steer	39" / 34"	2,000 lbs	176 lbs
BSD49BO500GX	Universal Skid Steer	49" / 44"	2,000 lbs	180 lbs
BSD39EUROGX	Alo/Euro	39" / 34"	2,000 lbs	176 lbs
BSD49EUROGX	Alo/Euro	49" / 44"	2,000 lbs	180 lbs

## FORGED BALE SPEARS (CONTINUED)

### Triple-Prong Bale Spear

**Standard Features:**

- Handles 4' x 4' x 8' bales
- 23" tine spacing
- Easy stabbing and removal

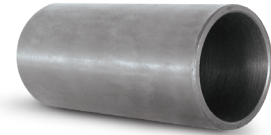


Part No.  
BST39BO500GX

PART NO.	MOUNT	TINE LENGTH / USABLE LENGTH	CAPACITY	WEIGHT
BST39BO500GX	Universal Skid Steer	39" / 34"	2,000 lbs	204 lbs
BST49BO500GX	Universal Skid Steer	49" / 44"	2,000 lbs	210 lbs
BST39EUROGX	Alo/Euro	39" / 34"	2,000 lbs	204 lbs
BST49EUROGX	Alo/Euro	49" / 44"	2,000 lbs	210 lbs



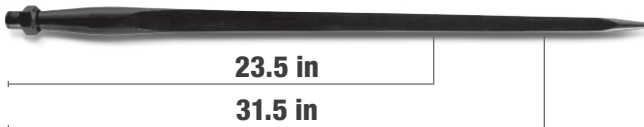
Part No.  
60.000.004X



Part No.  
60.000.002X

### Replacement Parts

PART NO.	DESCRIPTION
60.000.002X	Conus Type 2 Sleeve
60.000.003X	32" Bale Spear, Conus Type 2 Straight
60.000.004X	39" Bale Spear, Conus Type 2 Straight
60.000.005X	49" Bale Spear, Conus Type 2 Straight



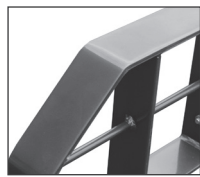
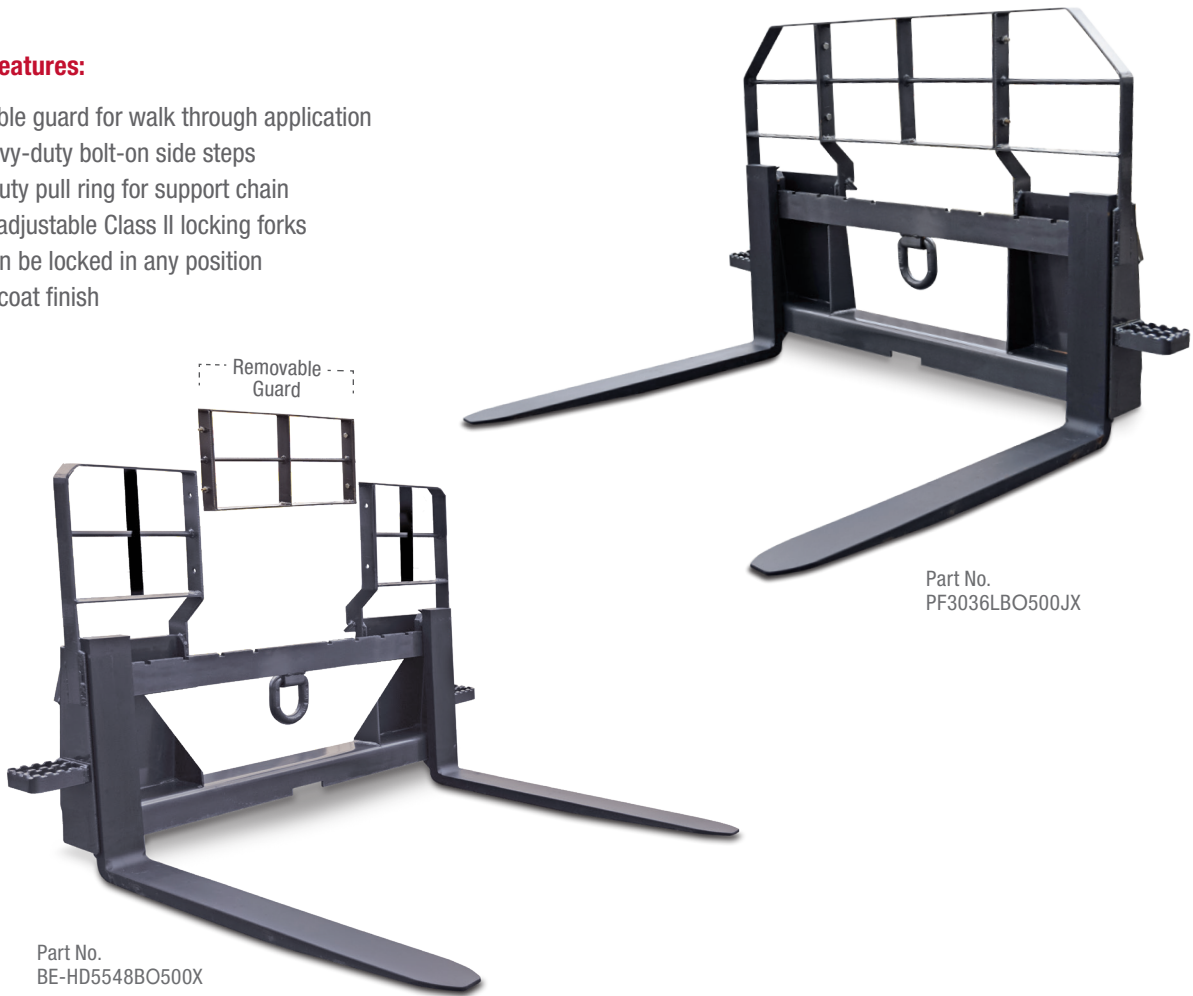
Max Load at 600mm / 23.5": 3585 lbs

Max Load at 800mm / 31.5": 2600 lbs

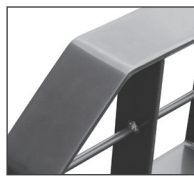
# PALLET FORKS

**Standard Features:**

- Removable guard for walk through application
- Two heavy-duty bolt-on side steps
- Heavy-duty pull ring for support chain
- Manual adjustable Class II locking forks
- Tines can be locked in any position
- Powder coat finish



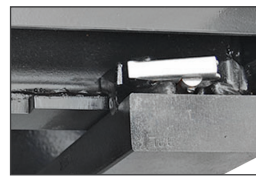
2" Frame Width



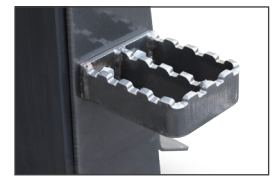
3" Frame Width



Heavy-Duty Pull Ring



Stainless Steel Latch



Replaceable Side Step

PART NO.	DUTY	MOUNT	FORK LENGTH	FORK DIMENSIONS	FRAME WIDTH/GUARD WIDTH	CAPACITY	CARRIAGE	WEIGHT
PF3036LBO500JX	Compact	Universal Skid Steer	36"	1.25" x 4" Class II Solid Hook Type	2"/22"	2,200 lbs	47" Locking	284 lbs
PF3042LBO500JX	Compact	Universal Skid Steer	42"	1.25" x 4" Class II Solid Hook Type	2"/22"	2,200 lbs	47" Locking	310 lbs
PF5042HBO500JX	Heavy	Universal Skid Steer	42"	1.5" x 4" Class II Solid Hook Type	3"/15"	3,700 lbs	47" Locking	387 lbs
PF5048HBO500JX	Heavy	Universal Skid Steer	48"	1.5" x 4" Class II Solid Hook Type	3"/15"	4,000 lbs	47" Locking	440 lbs
BE-HD5548BO500X	Heavy	Universal Skid Steer	48"	1.5" x 5" Class II Solid Hook Type	3"/15"	5,500 lbs	50" Locking	587 lbs
BE-HD4448AO600X	Heavy	Euro	48"	1.5" x 4" Class II Solid Hook Type	3"/14.5"	4,000 lbs	50" Locking	466 lbs
BE-HD5548AO600X	Heavy	Euro	48"	1.5" x 5" Class II Solid Hook Type	3"/16.5"	5,500 lbs	50" Locking	556 lbs

## PALLET FORKS (CONTINUED)

### Replacement Parts

PART NO.	DESCRIPTION	UNIVERSAL SKID STEER MOUNT	EURO MOUNT
PFTLXX	Replaceable Stainless Steel Latch	X	X
PFTSSX	Heavy-Duty Replaceable Side Step	X	X
PFTDRX	Heavy-Duty Pull Ring for Support Chain	X	X
PFT36LDJX	Compact-Duty 36" Replacement Fork, Class II Locking Fork with Latch	X	
PFT42LDJX	Compact-Duty 42" Replacement Fork, Class II Locking Fork with Latch	X	
PFT42HDJX	Heavy-Duty 42" Replacement Fork, Class II Locking Fork with Latch	X	X
PFT48HDJX	Heavy-Duty 48" Replacement Fork, Class II Locking Fork with Latch	X	X
PFT48HDJ5500X	Heavy-Duty 48" Replacement Fork, Class II Locking Fork with Latch	X	X

## PALLET AND BIN FORKS

### Standard Features:

- 47" length × 25" center
- Forks are fixed to frame

PART NO.	DUTY	MOUNT	FORK LENGTH	FORK DIMENSIONS	CAPACITY	WEIGHT
73343928	Compact	3-Point Hitch (Category 1)	42"	1-1/4" × 4"	2,000 lbs	174 lbs

### Replacement Parts

PART NO.	DESCRIPTION
87299272	Lift arm pin



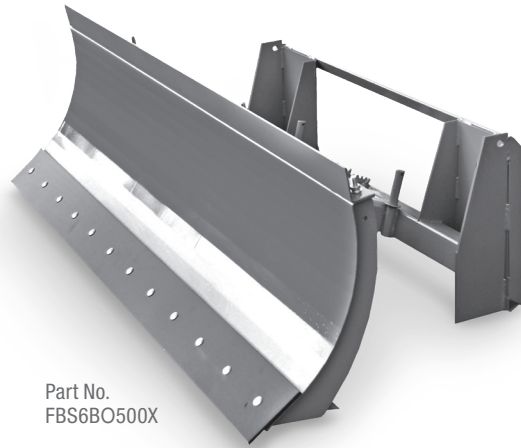
Part No.  
73343928

## ALL-MAKES ATTACHMENTS

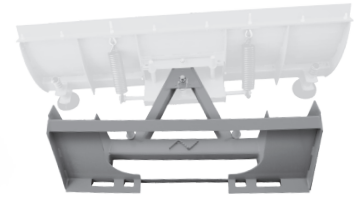
# SNOW BLADES

### Standard Features:

- Reversible bolt-on cutting edge
- Manual angle adjustment; hydraulic angle kit available
- Adjustable skid shoes
- Spring trip safety mechanism



Part No.  
FBS6BO500X



Universal Skid Steer Mount

PART NO.	DUTY	MOUNT STEER	WIDTH	MIN HP RATING	WEIGHT
FBS5BO500X	Heavy	Universal Skid Steer	60"	Up to 60 HP	385 lbs
FBS6BO500X	Heavy	Universal Skid Steer	72"	Up to 60 HP	420 lbs
FBS7BO500X	Heavy	Universal Skid Steer	84"	Up to 60 HP	475 lbs

## Replacement Parts

PART NO.	DESCRIPTION
350006X	Skid Plate
350022X	Spring
350018X	Carriage Bolt
39.000.012X	Flat Washer
09.000.012X	Nyloc Nut
350519X	60" Cutting Edge
350619X	72" Cutting Edge
350719X	84" Cutting Edge

## Accessories

PART NO.	DESCRIPTION
FBSHYDKITX	Hydraulic angle kit. Includes both hydraulic cylinders and hoses

# SNOW BLOWERS

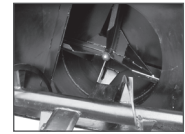
## Light Duty

### Standard Features:

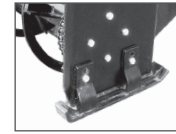
- 10-gauge steel
- 13" auger
- 5" wide paddles
- 20" impeller
- Manually adjustable deflect spout
- Heavy-duty height adjustable skid shoes
- Chain driven shearbolt protected auger
- Series 4 540 shearbolt torque limiter PTO



Manual 340°  
Worm Gear Chute



20" Impeller



Heavy-Duty Height  
Adjustable Skid Shoes



Adjustable Deflector  
Spout



Chain Driven Shearbolt  
Protected Auger

PART NO.	DUTY	MOUNT	WIDTH	CHUTE	MIN HP REQUIRED	WEIGHT
SBS50GLX	Light	3-Point Hitch (Category 1)	50"	Manual	15 HP	425 lbs

## Standard Duty

### Standard Features:

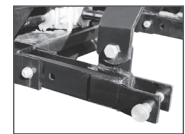
- 10-gauge steel
- 14" auger
- 5" wide paddles
- 24" impeller
- Manually adjustable deflect spout
- Heavy-duty height adjustable skid shoes
- Removable hitch
- Chain driven shearbolt protected auger
- Series 4 540 shearbolt torque limiter PTO



Part No.  
SBS50GX



CAT 1 Hitch View



Removable Hitch



Manual 340°  
Worm Gear Chute



24" Impeller



Heavy-Duty Height  
Adjustable Skid Shoes

PART NO.	DUTY	MOUNT	WIDTH	CHUTE	4" BOLT-ON WIDTH EXTENSIONS	MIN HP REQUIRED	WEIGHT
SBS50GX	Standard	3-Point Hitch (Category 1)	50"	Manual; Optional Hydraulic Chute Rotation Kit	Optional	18 HP	505 lbs
SBS60GX	Standard	3-Point Hitch (Category 1)	60"	Manual; Optional Hydraulic Chute Rotation Kit	Optional	22 HP	545 lbs
SBS72GX	Standard	3-Point Hitch (Category 1)	72"	Manual; Optional Hydraulic Chute Rotation Kit	Optional	40 HP	585 lbs
SBS7680GX	Standard	3-Point Hitch (Category 1)	80"	Manual; Optional Hydraulic Chute Rotation Kit	Standard	50 HP	645 lbs

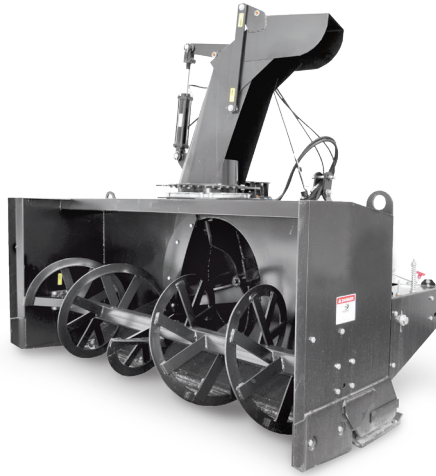
## ALL-MAKES ATTACHMENTS

# SNOW BLOWERS (CONTINUED)

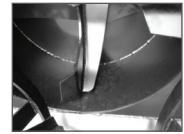
### Heavy Duty

#### Standard Features:

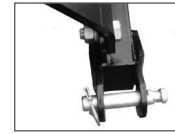
- 11-gauge steel
- 23" auger
- 4" wide paddles
- 28" impeller
- Manually adjustable deflect spout; hydraulic deflector spout kit available
- Heavy-duty height adjustable skid shoes
- Removable telescoping hitch
- Chain driven shearbolt protected auger
- Series 8 540 shearbolt torque limiter PTO



Hydraulic Chute  
340° Rotation



Heavy-Duty Blower



Removable  
Telescoping Hitch



Chain Driven Shearbolt  
Protected Auger



Heavy-Duty Height  
Adjustable Skid Shoes

PART NO.	DUTY	MOUNT	WIDTH	CHUTE	MIN HP REQUIRED	WEIGHT
SBS100HDGX	Heavy	3-Point Hitch (Category 2)	100"	Hydraulic	50 HP	1,900 lbs

### Accessories

PART NO.	DESCRIPTION	STANDARD DUTY	HEAVY DUTY
SBSEXTGX	Width Extensions – Increase the Width of Your Snow Blower by 4" with Bolt on Width Extensions. Comes Standard on Part No. SBS7680GX	X	
SBSNHDKITX	Hydraulic Chute Rotation Kit – Includes Hydraulic Motor, Hoses and Cover Plate (Not Pictured). Universal Fit for All Tractor Hydraulic Systems	X	
SBSHDGDEFKITX	Hydraulic Deflector Spout Kit – Includes Hydraulic Cylinder and All Hoses with Fittings		X

### Replacement Parts

PART NO.	DESCRIPTION	LIGHT DUTY	STANDARD DUTY	HEAVY DUTY
SBSN42418GX	Shearbolt, Assembly 6 × 30 GR 8.8	X	X	X
680015X	Washer, Nylon	X		
SBSN3GX	Bearing, SAPF206-20W Flange	X	X	
SBSN57-2015GX	Gearbox, BE-SBXXG 1:1.46 N/S	X	X	
SBSN20GX	Chain, Roller #60, 37 Links	X	X	
SBSN19GX	Link, Connector #60	X	X	
69.888.400X	PTO	X	X	
SBSN33GX	Washer, Nylon		X	
SBHD14GX	Bearing F207-20			X
SBHD7GX	Gearbox			X
SBHD11GX	Chain, Roller #80			X
69.888.046X	PTO			X



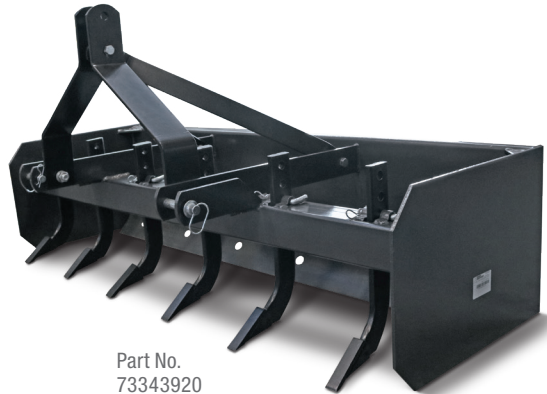
# BOX BLADES

**Standard Features:**

- Reversible 1/2" x 6" cutting edges
- 17" moldboard
- 3/8" side panel



Reversible 1/2" x 6"  
Cutting Edges



Part No.  
73343920



Part No.  
73343920

PART NO.	MOUNT	WIDTH	NUMBER OF SHANKS	HP REQUIRED	WEIGHT
73343918	3-Point Hitch (Category 1)	48"	4	Up to 50 HP	386 lbs
73343919	3-Point Hitch (Category 1)	60"	5	Up to 50 HP	446 lbs
73343920	3-Point Hitch (Category 1)	72"	6	Up to 50 HP	496 lbs

## Replacement Parts

PART NO.	DESCRIPTION	73343918	73343919	73343920
CE4S	Cutting Edge, 4'	X		
CE5S	Cutting Edge, 5'		X	
CE6S	Cutting Edge, 6'			X
RBR1G	Bolt, Plow M16 x M40	X	X	X
BBL8G	Brace Arm, 3 Point	X	X	X
BBL10G	Toplink Arm, 3 Point	X	X	X

## ALL-MAKES ATTACHMENTS

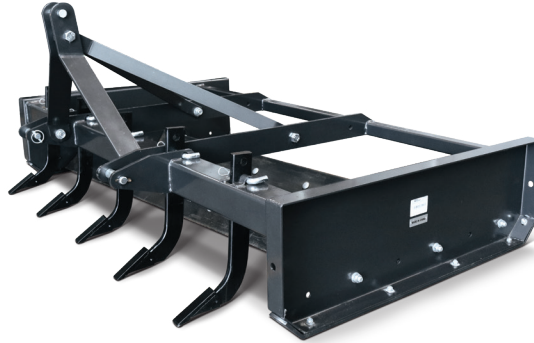
# BOX GRADER SCRAPERS

### Standard Features:

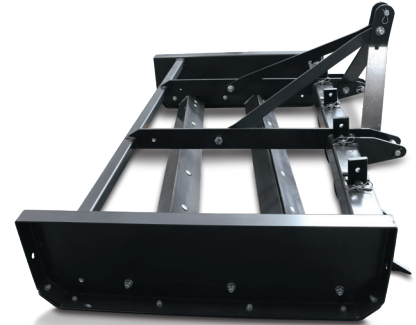
- Five reversible positions
- Reinforced side panels
- Adjustable blades



Adjustable Shanks



Part No.  
73343925



Part No.  
73343925

PART NO.	MOUNT	WIDTH	NUMBER OF SHANKS	HP REQUIRED	WEIGHT
73343925	3-Point Hitch (Category 1)	60"	5	20 – 45 HP	460 lbs
73343926	3-Point Hitch (Category 1)	72"	6	25 – 50 HP	511 lbs
73343927	3-Point Hitch (Category 1)	84"	7	25 – 60 HP	562 lbs

## Replacement Parts

PART NO.	DESCRIPTION	73343925	73343926	73343927
GS2G	Top Link Hitch Arms, Grader Scraper	X	X	X
BB2G	Shank, Grade Scraper	X	X	X
GS4.5G	Blade, 5' Grader Scraper	X		
GS4.6G	Blade, 6' Grader Scraper		X	
GS4.7G	Blade, 7' Grader Scraper			X
GS6G	Hitch Stabilizer Arms Grader Scraper	X	X	X
02.010.030P	Carriage Bolt, 8 Pack, M10 × 30	X	X	X
RBR1GP	Carriage Bolt, 8 Pack, M16 × 40	X	X	X
GS23G	Skid Plate, Grader Scraper	X	X	X
GS24G	Bushing, CAT 2-1 Long	X	X	X
GS25G	Hitch Pin, CAT, Roll Pin	X	X	X
BBSTHDG	Wear Tip, Grader Scraper	X	X	X

# CULTIVATORS

**Standard Features:**

- Solid welded frame
- Reversible points
- One bolt shank adjustment
- Forged steel S-tines



PART NO.	MOUNT	WIDTH	NUMBER OF S-TINES	HP REQUIRED	WEIGHT
73343939	3-Point Hitch (Category 1)	60"	9	20 – 25 HP	185 lbs
73343940	3-Point Hitch (Category 1)	72"	11	25 – 30 HP	210 lbs
73343941	3-Point Hitch (Category 1)	84"	13	30+ HP	240 lbs

## Replacement Parts

PART NO.	DESCRIPTION	73343939	73343940	73343941
56.000.001	S-Tine, 32 × 10 × 550 NR50	X	X	X
56.000.003	Point, Cultivator Rever 40 × 6 × 190	X	X	X
56.000.005	Clamp, 2" Tube 50 × 50 Bar	X	X	X
56.000.016	Bolt Assy, Point 3/8" × 1-3/4"	X	X	X
FCST07G	Bushing Top Link	X	X	X
FCST08G	Rear Brace Bar	X	X	X
FCST10G	Toplink Bar	X	X	X

## ALL-MAKES ATTACHMENTS

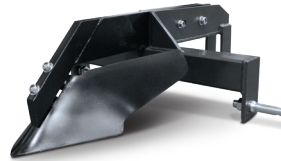
# SUBSOILER/MIDDLEBUSTER

### Standard Features:

- 3-point hitch
- Replaceable point



Part No.  
73343929



Part No.  
73343930



Part No.  
73343930

PART NO.	DESCRIPTION	MOUNT	HP REQUIRED	WEIGHT
73343929	Single Subsoiler, 22" Penetration	3-Point Hitch (Category 1)	Up to 40 HP	98 lbs
73343930	Hiller/Middlebuster Plow	3-Point Hitch (Category 1)	Up to 40 HP	110 lbs

## Replacement Parts

PART NO.	DESCRIPTION	73343929	73343930
SSPOINTG	Point, Subsoiler	X	
MB01G	Point, Middle Buster		X

# FLAIL MOWERS

### Standard Features:

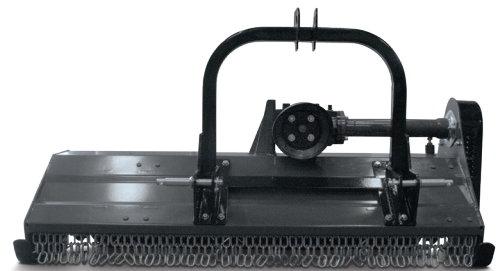
- 540 RPM PTO
- Fixed center hitch
- Side belt drive
- Adjustable skid shoes



Y-Style Flail Knives



Part No.  
73343907



Part No.  
73343907

PART NO.	MOUNT	WIDTH	HP REQUIRED	WEIGHT
73343906	3-Point Hitch (Category 1 & 2)	56"	30 – 35 HP	699 lbs
73343907	3-Point Hitch (Category 1 & 2)	60"	30 – 40 HP	732 lbs
73343909	3-Point Hitch (Category 1 & 2)	68"	40 – 50 HP	791 lbs

# FLAIL MOWERS (CONTINUED)

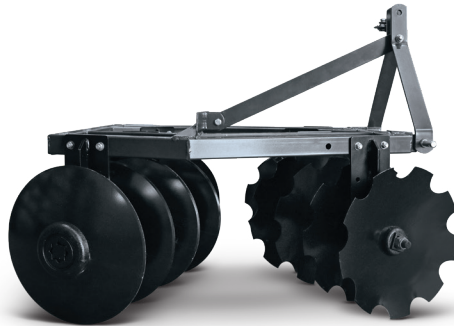
## Replacement Parts

PART NO.	DESCRIPTION	73343906	73343907	73343909
FTL.125.124	Pinshaft, A Frame Suspense	X	X	X
UC207-Z	Bearing , W Flange 90207	X	X	X
25.805.508	Oil Seal, 55 × 80 × 8 mm	X	X	X
RK120.109A	Oil Sealing Sleeve L=48	X	X	X
EFGC120.014	Skid, RH	X	X	X
EFG120.105A	Lower Pulley	X	X	X
EFGC120.138	Plug, Rubber	X	X	X
EFGC120.016	Belt Cover	X	X	X
EFG120.106A	Upper Pulley	X	X	X
47.170.991-3	Belt, V 17X991 3-Pack	X	X	X
REACH04-35X60	Sleeve	X	X	X
EFGC120.102A	Flange	X	X	X
EF100.00.012	Bearing & Flange UC205	X	X	X
EFGC120.013	Skid, LH	X	X	X
EFGC120.104	Blade, Flail "Y"	X	X	X
55.417.251	Spacer, Bomford	X	X	X
EFGC130.015	Gearbox EFGC	X	X	X
FM120.00.199	Input Shaft Shield	X	X	X
25.723.512	Oil Seal, 35 × 72 × 12 mm	X	X	X
19.072.025	Snap Ring, Int 72 × 2.5	X	X	X
29.062.007	Bearing, 6207-2Z	X	X	X
EFGC130.133A	Transmission Shaft	X	X	X
EFGC120.132	Connect. Sleeve	X	X	X
EFGC120.131	Gasket	X	X	X
CBW-00-011B	Breather Plug	X	X	X
ZBT32001.3-ZG3/8-19	Tapered Plug	X	X	X

## DISC HARROWS

**Standard Features:**

- Tubular iron frame
- Plain rear discs
- Notched front discs
- Re-greaseable cast iron bearings



Part No.  
73343937



Part No.  
73343938

PART NO.	MOUNT	WIDTH	BLADE DIAMETER	HP REQUIRED	WEIGHT
73343937	3-Point Hitch (Category 1)	50"	16"	Up to 40 HP	410 lbs
73343938	3-Point Hitch (Category 1)	59"	18"	Up to 40 HP	505 lbs

## Replacement Parts

PART NO.	DESCRIPTION	73343937	73343938
DH5-1.5G	Axle, Disc 5 ft		X
DH5-2G	Cap, End-1 Large 6 3/8" OD	X	X
DH5-3.18G	Disc, 18" Notched		X
DH5-3.18SG	Disc, 18" Smooth		X
DH5-4G	Spool, Ribbed	X	X
DH5-5G	Housing Half, for Axle Spool	X	X
DH5-6G	Cap, End-2 Small 3.5" OD	X	X
DH5-7G	Nut, Hex M24 Nylock	X	X
DH9G	Side Bar	X	X
DH11G	Bushing, Steel	X	X
DH15G	Brace Bar	X	X
DH5-1.4G	Axle, Disc 4 ft	X	
DH5-3.16G	Disc, 16" Notched	X	
DH5-3.16SG	Disc, 16" Smooth	X	

# LANDSCAPE RAKES

**Standard Features:**

- Five forward settings and Five reverse settings
- 5/16" x 1" x 17" spring tines



PART NO.	MOUNT	WIDTH	HP REQUIRED	WEIGHT
73343922	3-Point Hitch (Category 1)	60"	Up to 50 HP	198 lbs
73343923	3-Point Hitch (Category 1)	72"	Up to 50 HP	230 lbs
73343924	3-Point Hitch (Category 1)	84"	Up to 50 HP	260 lbs

## Replacement Parts

PART NO.	DESCRIPTION	73343922	73343923	73343924
RRTINEG	Tine, Landscape Rake	X	X	X
RR15G	Tooth Support	X	X	X
LRM18G	Support Stand	X	X	X

## ALL-MAKES ATTACHMENTS

# POST HOLE DIGGERS

## Standard Duty

### Standard Features:

- PTO shaft shear pin protected
- Swivel top link
- Shorter boom for easier lifting with tractors less than 30 HP
- Heavy-duty oil filled gear box
- Replaceable cutting bits on post hole augers



Part No.  
73343916



Thread on  
replaceable spiral tip



24" Post Hole Auger



Bolt-on replaceable  
cutting edges



Bolt-on replaceable  
cutting edges

PART NO.	DESCRIPTION	MOUNT	DRILLING DEPTH	HP REQUIRED	WEIGHT
73343916	Standard Duty Post Hole Digger, Extended Support	3-Point Hitch (Category 1)	40"	25+ HP	155 lbs
73343931	6" Post Hole Auger	NA	40"	NA	32 lbs
73343932	9" Post Hole Auger	NA	40"	NA	40 lbs
73343933	12" Post Hole Auger	NA	40"	NA	52 lbs

## Replacement Parts

PART NO.	DESCRIPTION	73343916	73343931	73343932	73343933	73343934	73343935	73343936
PHDG4	Gear Box Assembly	X						
PHD2G	Safety Shield Input	X						
PHD3G	Safety Shield Output	X						
PHDBUSH	Bushing, Auger Gearbox	X						
PHDPIN	Mounting Pin, Auger Gearbox	X						
69.777.053X	PTO Drive Shaft	X						
04.038.250	Shear Bolt GR 2, 3/8" x 2-1/2"	X						
PHD6G	Boom Assembly	X						
PHD14G	U-Frame Assembly	X						
04.516.250	Shear Bolt GR 2, 5/16" x 2-1/2"	X						
PHD1G	Spiral Auger Point		X	X	X	X	X	X
PD-24567-E	Cutting Edges (weld on)		X			X		
PD-24577-E	Cutting Edge Outer 9"			X			X	
PD-24578-E	Cutting Edge Inner 9"			X			X	
PD-24587-E	Cutting Edge Outer 12"				X			X
PD-24588-E	Cutting Edge Inner 12"				X			X



# POST HOLE DIGGERS

## Light Duty

### Standard Features:

- PTO shaft shear pin protected
- Swivel top link
- Shorter boom for easier lifting with tractors less than 30 HP
- Heavy-duty oil filled gear box
- Replaceable cutting bits on post hole augers



Part No.  
73343915

PART NO.	DESCRIPTION	MOUNT	DRILLING DEPTH	HP REQUIRED	WEIGHT
73343915	Light-Duty Post Hole Digger	3-Point Hitch (Category 1)	40"	20 - 25 HP	118 lbs
73343934	6" Post Hole Auger	NA	24"	NA	21 lbs
73343935	9" Post Hole Auger	NA	24"	NA	28 lbs
73343936	12" Post Hole Auger	NA	24"	NA	43 lbs

## Replacement Parts

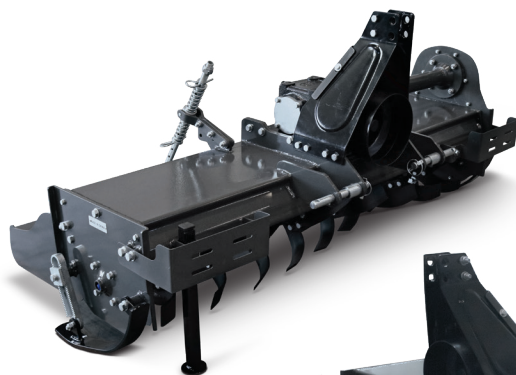
PART NO.	DESCRIPTION
700003	Shield, Output Light-Duty Post Hole Digger
700005	Shield, Input Light-Duty Post Hole Digger
700004	Gearbox, Light-Duty Post Hole Digger
700009	Gearbox Pin, Light-Duty Post Hole Digger
700010	Boom Assembly, Light-Duty Post Hole Digger
700011	U Frame, Light-Duty Post Hole Digger

# ROTARY TILLERS

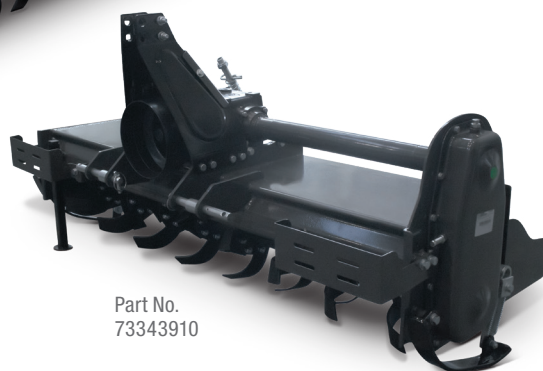
## Standard Duty

### Standard Features:

- 540 RPM PTO
- Manual adjustable hitch
- Four tines per flange
- 3.54" tillage depth
- Parking stand
- Skids for depth control



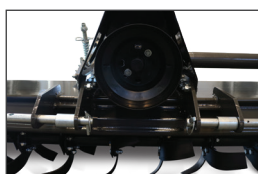
Part No.  
73343910



Part No.  
73343910



Four Tines Per Flange



540 Input

PART NO.	MOUNT	WIDTH	NUMBER OF BLADES	HP REQUIRED	WEIGHT
73343910	3-Point Hitch (Category 1 & 2)	47"	24	12 – 20 HP	518 lbs
73343912	3-Point Hitch (Category 1 & 2)	59"	32	12 – 25 HP	607 lbs

## Replacement Parts

PART NO.	DESCRIPTION	73343923	73343924
IGQ-125.11.011	A-Frame, Side Suspension	X	X
FTL.125.111	Plate, Protection Rear	X	X
GB13871-92.14	Oil Seal, FB 45 × 72 × 8	X	X
MZ105.128	Flange, Upper Bearing Seat	X	X
MZ105.124	Sleeve, Oil Seal	X	X
27.063.007	Bearing, 6307	X	X
MZ105.127	Sprocket, Drive Train Wheel U	X	X
FM120.00.401	Guard Shade, PTO	X	X
FTL.125.011	Gearbox, Assembly	X	X
EF100.00.106	Sleeve, Pin Shaft	X	X
FTL.125.133	Spring, Chain Adjustment	X	X
FTL.125.134	Lever, Chain Adjustment	X	X
FTL.125.139	Gasket, Cover Chain Drive	X	X
FTL.125.013	Chain, Transmission Drive 16AX	X	X
CBW-00.112	Oil Plug, Hex 16 × 15 × 1.5 mm	X	X
CBW-00.103	Washer	X	X

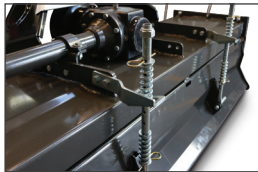
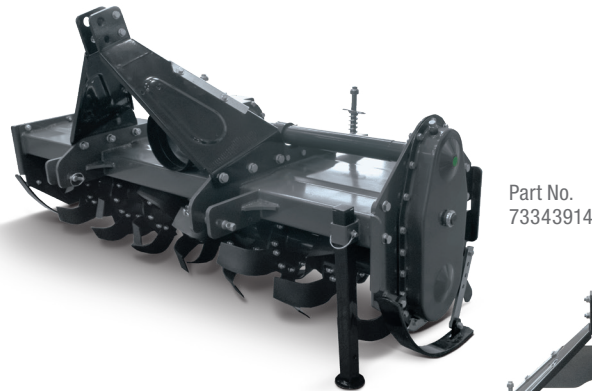
PART NO.	DESCRIPTION	73343923	73343924
FTL.125.026	Cover, Chain Drive Transmission	X	X
FTL.125.140	Sprocket, Drive Train Wheel LO	X	X
FTL.125.021LH	Skid Shoe, Active Plate Left	X	X
FTL.125.021RH	Skid Shoe, Active Plate Right	X	X
27.062.009	Bearing, 6209	X	X
25.725.008	Oil Seal, 50 × 72 × 8 mm	X	X
IGQ.11.127	Blade, Tiller FTL RH C	X	X
IGQ.11.128	Blade, Tiller FTL LH C	X	X
FTL.125.016	Support, Park Leg	X	X
IGQ-125.11.104	Flange, Bearing Support Right	X	X
27.062.007	Bearing, 6207	X	X
25.406.208	Oil Seal, 40 × 62 × 08 mm DL	X	X
IGQ-125.11.105	Gasket, Support Bearing RH	X	X

# ROTARY TILLERS

## Heavy Duty

### Standard Features:

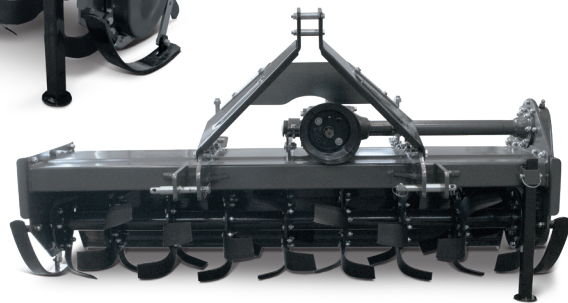
- 540 RPM slip clutch PTO
- Fixed center mount hitch
- Single speed gearbox
- 4.75" tillage depth
- Six tines per flange
- Parking stand
- Skids for depth control



Adjustable Rear Gate



Six Tines Per Flange



Part No.  
73343914

PART NO.	MOUNT	WIDTH	NUMBER OF BLADES	HP REQUIRED	WEIGHT
73343913	3-Point Hitch (Category 1 & 2)	59"	36	30 - 50 HP	705 lbs
73343914	3-Point Hitch (Category 1 & 2)	71"	42	40 - 75 HP	772 lbs

## Replacement Parts

PART NO.	DESCRIPTION	73343923	73343924
1G-150.01.015	Gear Box, Loaded	X	X
1G-150.04-03	Up Gear	X	X
1G-150.04-02	Mid Gear	X	X
1G-150.04-01	Down Gear	X	X
1G-150.01.102	Gasket, Side Gear Cover	X	X
1G-150.01.012	Cover Weldment of Gearbox	X	X
27.062.008	Bearing, 6208	X	X
1G-150.00.018	The Brace Weldment	X	X
1G-150.00.016	Hanging Right Side Panel	X	X
1G-150.00.106	Hanging Belaying Cleat	X	X
1G-150.00.017	Hanging Left Side Panel	X	X
27.063.006	Bearing, 6306	X	X
25.623.512	Oil Seal, 35 × 62 × 12	X	X

PART NO.	DESCRIPTION	73343923	73343924
63.000.019	Blade, IGN – LH C	X	X
63.000.020	Blade, IGN – RH C	X	X
1G-150.00.104	Right Bearing Cover Plate	X	X
1G-150.00.013	Skid, Shoe	X	X
1G-150.01.136	End Cap, Gearbox	X	X
1G-150.00.149A	Spring, Upper Tailgate Suspension	X	X
1G-150.00.148	Rod , Bonnet Suspension	X	X
25.407.012	Oil Seal, 40 × 72 × 12 mm	X	X
27.030.308	Bearing, 30308	X	X
1G-150.01.106	Mid Gear Shaft	X	X
31.063.009	Bearing, 6309-2RS	X	X
1G-150.01.104	No.III Shaft	X	X

## WOOD CHIPPERS

**Standard Features:**

- Processes up to 4" diameter material
- Self-feeding
- 540 RPM PTO
- 25-1/2" diameter rotor
- 360° rotating hood
- One fixed blade and four rotating blades
- Special hardened blade



360° Adjustable Rotating Hood



Part No. 73343917



Part No. 73343917

PART NO.	DESCRIPTION	MOUNT	HP REQUIRED	WEIGHT
73343917	4" Wood Chipper	3-Point Hitch (Category 1)	18 – 45 HP	432 lbs

### Replacement Parts

PART NO.	DESCRIPTION
WC6G	Twig Breaker
WC15G	Bearing, Flange UCF208
WC19G	Shield, Cardan Protection
WC25G	Spacer Ring
WC34G	Hood Latch Assembly
WCKNIFE	Knife, Woodchipper
WC41G	Flap, Rubber
WC42G	Clamp Plate

# BRABER EQUIPMENT WARRANTY POLICY

## Warranty Coverage

Equipment distributed by Braber Equipment is guaranteed to the extent of the one-year limited warranty (warranty starts from the date of retail sale to customer) from the manufacturer. Exception to this warranty – Rotary Cutter Gearbox – is guaranteed to the extent of the six-year limited warranty. Proof of purchase (customer retail invoice) must be presented when requesting warranty service. Warranty does not cover freight or labor charges associated with the inspection and testing of products sold by Braber Equipment, which are found not to be a valid warranty claim.

Orders received with missing parts need to be reported within 48 hours. All warranty returns require a Braber Equipment pre-approval before returning merchandise for warranty inspection. Warranty claims without this pre-approval will not receive credit and any freight claims or damages must be reported within 48 hours.

## Warranty Procedure

1. When a dealer encounters a warranty situation, they must call Braber Equipment (1-877-588-3311) and ask for the CNH Industrial Warranty Manager. Hours of operation 8 AM – 4:30 PM PST.
2. The Warranty manager will provide the dealer with a warranty application.
3. Once the warranty application has been submitted to the Warranty Manager, the Warranty Manager will pre-assess the application taking into consideration the following:
  - a. Warranty coverage outstanding for the unit
  - b. Recalls related to the unit
  - c. Proper care and application of the unit
4. If the application passes the pre-assessment stage, the dealer will be provided with an RGA number. Once the dealer obtains this number, they will have 45 days to return the unit prepaid to Braber Equipment.
5. Based on review of the unit, the final decision of the application will be made resulting in the unit being repaired, credited or rejected for warranty.
6. If the unit has warranty coverage Braber Equipment will order the necessary parts from the manufacturer, repair the unit and return it to the dealer.
7. If the unit is not covered under warranty, and is repairable, the dealer or customer will be quoted a price including applicable taxes for the cost of repair by Braber Equipment. The unit will then be returned to the dealer via freight collect.

## Labor Allowance

Credit for labor for the replacement or repair of defective parts during the normal machine warranty period is at the discretion of Braber Equipment, and is subject to the following conditions:

1. Preapproval must be obtained by the Warranty Manager.
2. Labor claimed must be claimed on the Braber Equipment Warranty Application Form.
3. If credit for labor is approved, it will be at the current labor rate, set and established by Braber Equipment.
4. Credit for traveling time or mileage will not be granted.
5. Labor allowance for machine set-up or pre-delivery service will not be granted.

\*\* Specifications subject to change without notice

## Policy

The foregoing warranty is exclusive and in lieu of all other conditions or warranties, whether written, oral or implied (including any warranty of merchantability or fitness for purpose). If it appears the specified warranty period stated in section “Warranty Coverage” from the date of delivery by the Dealer to the ultimate Purchaser, that the goods do not meet the warranty specified, Braber Equipment will effect correction of any defects, at Braber Equipment option, either by repairing or replacing parts. Upon expiration of the warranty period, all such liability shall terminate.

This Warranty does not cover depreciation or damage caused by normal wear, accident, improper maintenance, improper protection in storage or improper use. The cost of normal maintenance and normal replacement of service items such as belts, lubricant or oils are the Customer’s responsibility. Warranty as set forth in the preceding paragraphs shall not apply to supplier equipment such as tires or tubes, such being the subject to the warranty of their own respective manufacturers. The forgoing shall constitute the sole remedy of the dealer and the sole liability of Braber Equipment.

## Limitation of Liability

Subject to government regulations, Braber Equipment liability of any claim, of any kind, including negligence for any loss or damages arising out of, connected with, or resulting from the order, or from the performance or breach thereof, or from the manufacture, sale, delivery, resale, repair, or use of any goods or parts covered by or furnished under an order, shall in no case exceed the price applicable to the goods or parts thereof which gives rise to the claim. In no event shall Braber Equipment be liable for special or consequential damages, including but not limited to downtime or labor resulting from damage.







PM-20021 06/2020 Replaces: PM-18146

©2020 CNH Industrial America LLC. All rights reserved. CNH Industrial Aftermarket Solutions is a trademark in the United States and many other countries, owned by or licensed to CNH Industrial N.V., its subsidiaries or affiliates.