

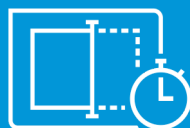


Fast scanning. Superb results.
Legendary HP reliability.

HP ScanJet Enterprise Flow N7000 snw1



Robust digital sending



Fast, smooth scanning—
even unattended

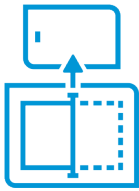


Peak workflow performance,
smarter scanning

Robust digital sending



Give your office high-volume scanning performance. The HP ScanJet Enterprise Flow N7000 snw1 is ideal for workgroups that require productive digitization with secure digital sending and sharing—including scanning directly to mobile devices.¹



Scan wirelessly with or without the network

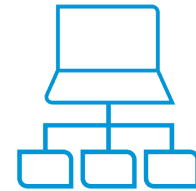
Get scans to where they're needed with built-in wireless networking,² Wi-Fi Direct[®],¹ or Ethernet, right from the 4.3-inch (10.9 cm) scanner control panel.

Using the familiar interface of your smartphone or tablet, you can snap, store, and route digital files—without having to use your PC.



Help protect data with secure digital sending

Network security protocols help protect data. Wi-Fi Direct lets you scan to mobile devices within range without having to access the network.¹



Centralize control of your devices

Easily integrate devices and gain fresh insight into your scanning. HP Web Jetadmin remote discovery and monitoring features make it easy to onboard and monitor this device.³

Configure scanner and security settings with the HP Embedded Web Server.



Enjoy peace of mind with legendary HP reliability

Prior to its introduction, a new HP ScanJet device undergoes rigorous HP testing to provide consistent, high-quality scans. Tests are performed with a large sample of devices through each step of the design process to be certain that the device measures up to HP standards. The result is a solid, reliable product that produces consistent, excellent scan quality over its entire life.

Fast, smooth scanning—even unattended

Keep business moving

Handle large volumes at blazing speeds. Capture entire documents with single-pass, two-sided scanning up to 150 images per minute (ipm).⁴ Recommended for up to 7,500 pages per day.



Built-in software and an 80-sheet automatic document feeder (ADF) deliver smooth paper handling.

Supports media sizes up to 122 inches (309.9 cm) and paper weights up to 93.3 lb (350 g/m²).

Improve performance

Save time and improve performance with 6 preconfigured, commonly used destinations. Create scan shortcuts for recurring tasks and make selections from the 4.3-inch (10.9 cm) color touch panel.



Capture a wide range of document sizes and types with HP EveryPage and an ultrasonic sensor.

With up to 1200 dpi resolution, you'll ensure high image quality for all your scans.

Designed to conserve

Support your business' environmental initiatives with a scanner designed to use energy efficiently. This scanner is ENERGY STAR® 3.0 certified and includes environmental specifications of CECP and EPEAT®⁵ Silver.



Save energy and help cut costs with HP Instant-on Technology⁶ and HP Auto-Off Technology⁷—intelligence that readies your scanner when you need it and turns it off when you don't.



Peak workflow performance, smarter scanning



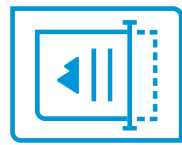
Save time and improve performance with customized workflows. Seamlessly capture a wide range of paper types in a single operation and send information where you need to.



Convenient delivery

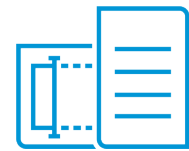
Scan images directly into popular applications without having to open another program, with full-featured TWAIN and ISIS® drivers.

Share or archive scans directly to popular cloud destinations—such as Dropbox and Google Drive™—with HP Scan Premium software. Additionally, send scans to email, network folders, a PC,⁸ or Microsoft® SharePoint®.



Built-in OCR

Use built-in optical character recognition (OCR) technology to easily transfer scans into editable text, encrypted PDF files, and a wide variety of additional file types.



Simple A3 scanning

Simplify the way you scan A3-size documents. With this office scanner, you can scan folded A3-size documents in folio mode without a carrier sheet.



Professional-grade scanning that helps save time



Tackle tasks quickly and easily

Use the icons on the smartphone-style 4.3-inch (10.9 cm) touch panel to scan to preconfigured or commonly used destinations—including scan to computer,⁸ scan to email, scan to network folder, scan to Reserved Jobs, scan to SharePoint, scan to USB drive, and scan to shortcut.



Easily manage digital documents

Capture and organize documents, business cards, and other file types with included feature-rich HP Scan Premium software and third-party software, such as I.R.I.S. Readiris™ Pro and Cardiris™.

Send to multiple destinations without user intervention.



Handle groups of documents

Batch processing features include detecting barcodes for use in file naming and automatically saving to a metadata XML file; set misfeed detection; automatically delete blank pages; separate large scan jobs into documents by number of pages, barcode, blank pages, and document separator pages; apply digital stamps; and merge pages in duplex scanning.



To Computer



To E-mail



To Network Folder



Scan to preconfigured destinations

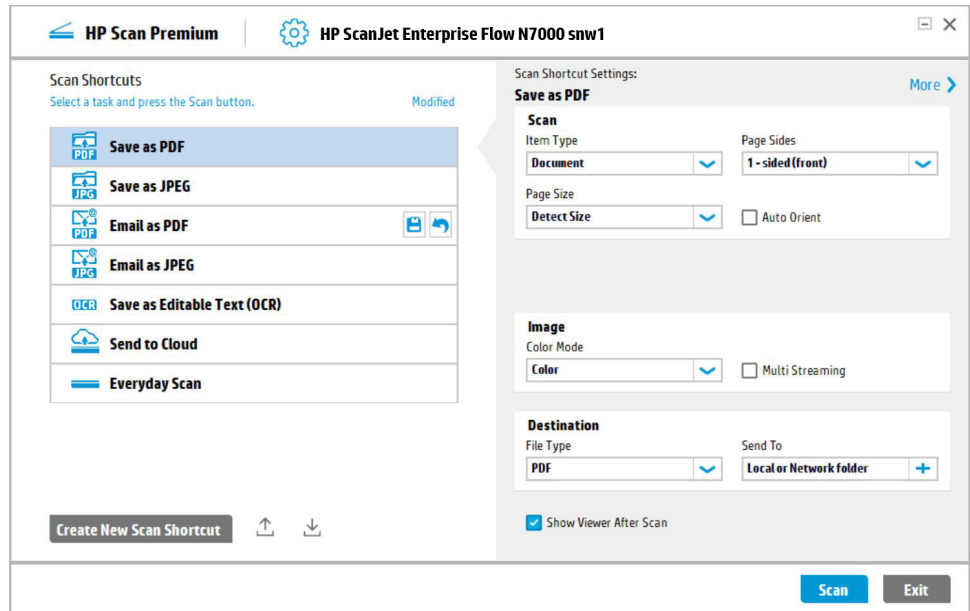
HP Scan Premium software

Fast and easy, HP Scan Premium software lets you scan with a single touch, capture text with OCR, create custom shortcuts, and take advantage of automated processes that simplify and improve workflows. Scan-to-cloud capabilities make it simple to capture and send information where you need it. You can even send to multiple destinations simultaneously. For added security, include a digital signature in a PDF file or apply a digital stamp to each scanned page.

To download the software, go to hp.com/support and search using the scanner's part number.

Optimize workflows with one-touch scanning

- Use convenient built-in shortcuts for typical scanning tasks.
- Specify the most common scan settings.
- Create a custom shortcut.
- Streamline tasks with automated processes.



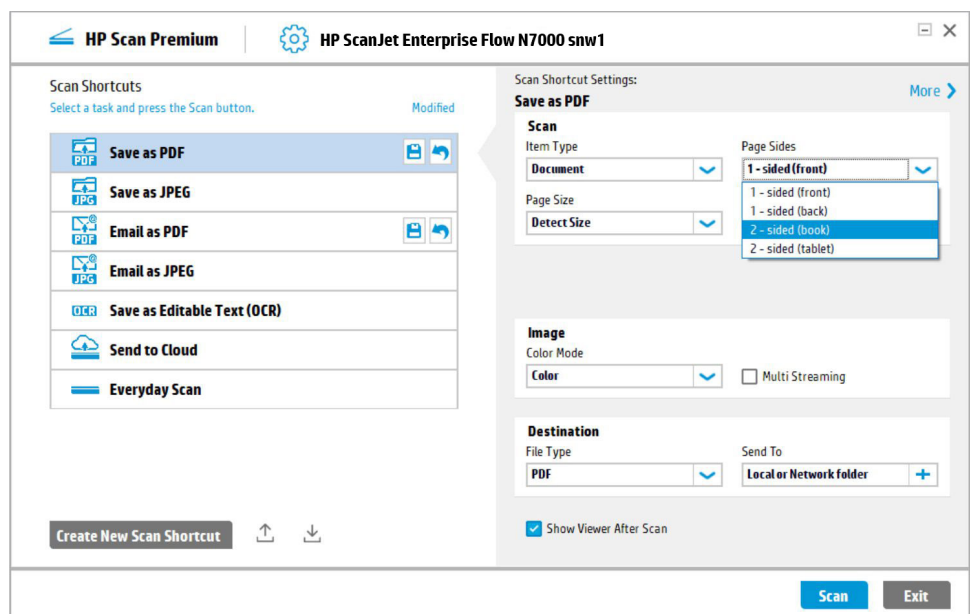
Choose basic scan settings

On the HP Scan Premium main menu, there are options for the most basic scan settings, which are easily changed to suit your needs.

Under **Scan Shortcut Settings**, you can choose the **Item Type** (either document or photo), **Page Size**, **Image Color Mode**, **File Type**, and **Send To** destination.

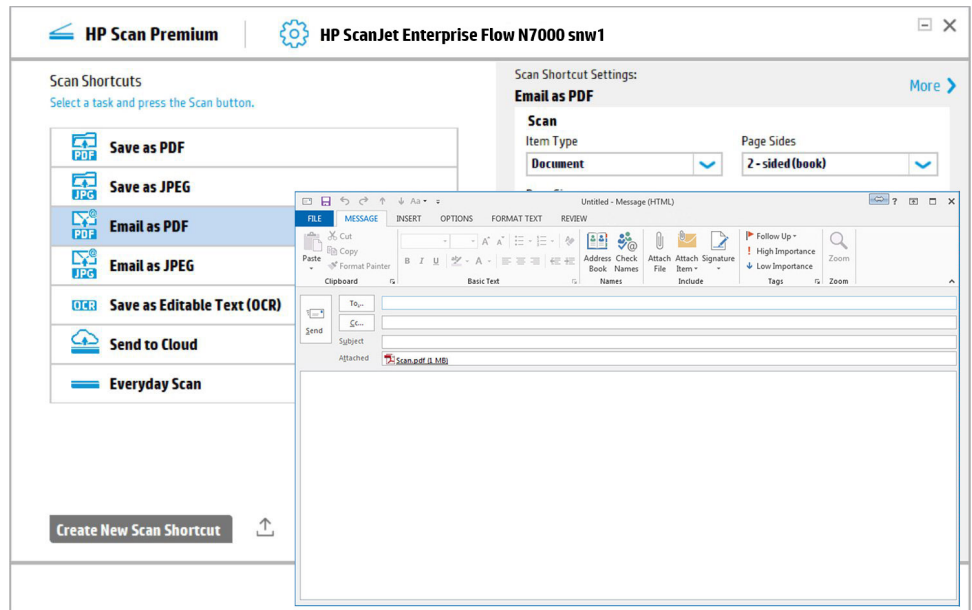
The **Page Sides** option is available in the initial scan window. You can select:

- **1-sided** scans only the side of the sheet that is facing up in the ADF.
- **2-sided (book)** scans so you can turn the pages on the “long-edge” similar to a book or magazine.
- **2-sided (tablet)** scans so you can turn the pages on the “short edge,” similar to pages on a conventional notepad or tablet.



Attach scans to email

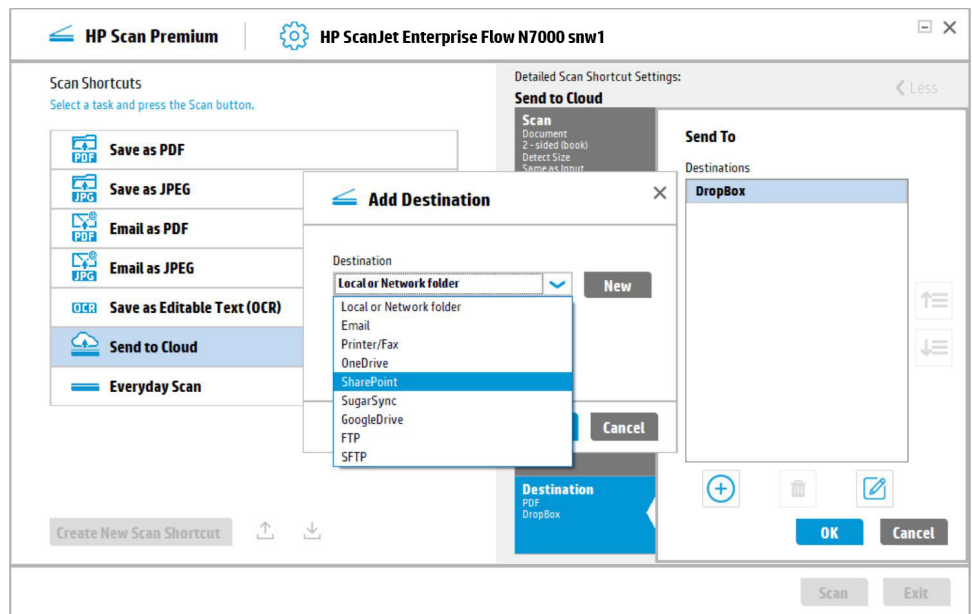
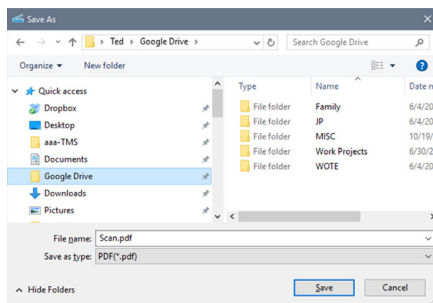
When you select **Email as PDF** or **Email as JPEG**, HP Scan Premium opens your default email application and attaches the image to a new email. Just fill in the recipient, the subject, and any message, and click **Send**.



Send scans directly to the cloud

HP Scan Premium allows you to easily send your scans to the cloud via cloud-based storage locations.

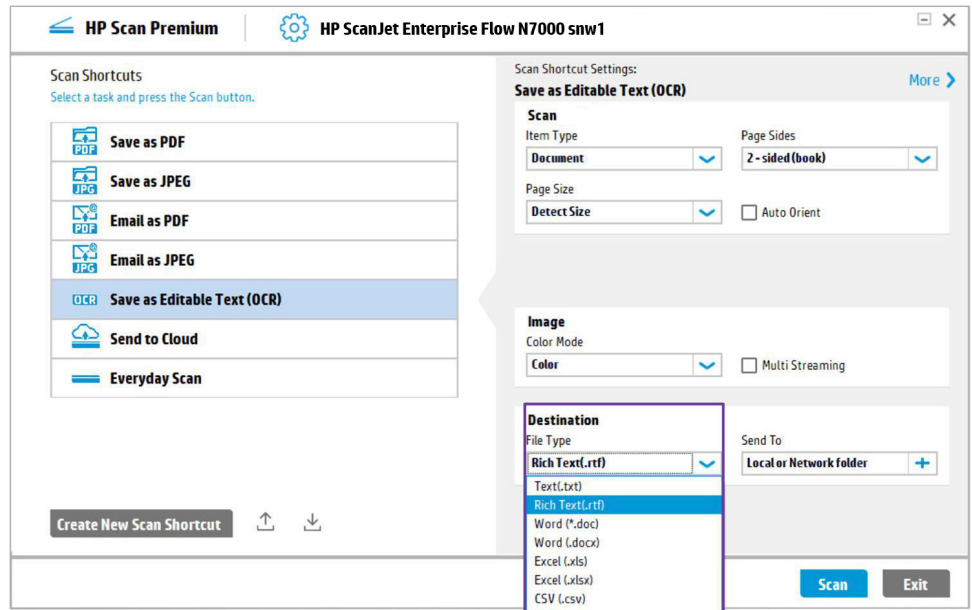
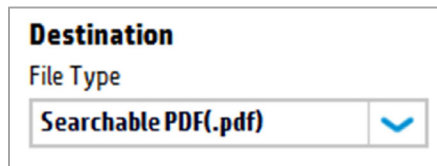
Send to Cloud lets you choose a destination such as Dropbox, Google Drive, SharePoint, or OneDrive. HP Scan Premium may display a sign-in screen. Once you are authenticated, you will simply see a local **Save as** destination window as shown below:



Turn scans into editable/searchable text (OCR)

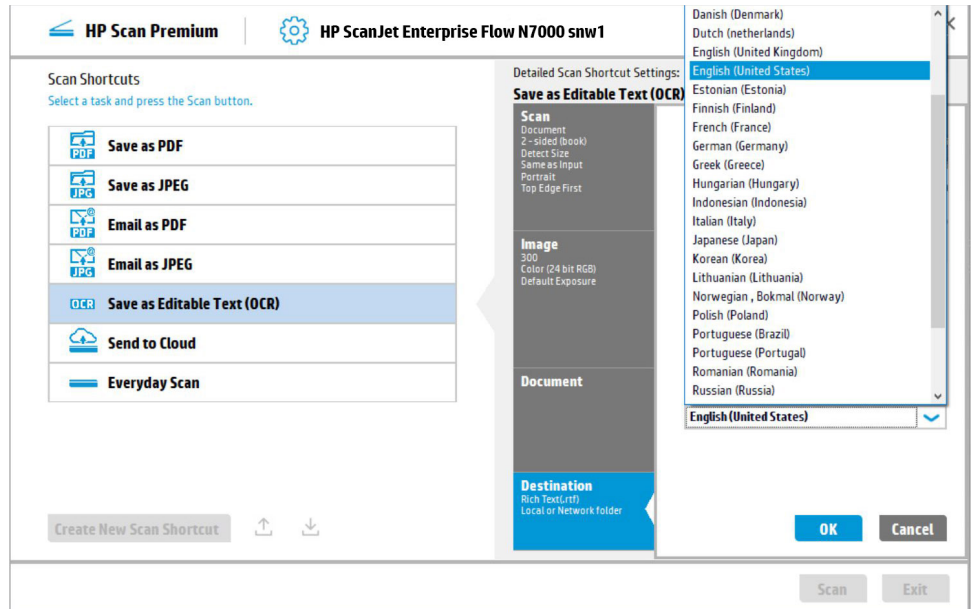
HP Scan Premium's OCR technology allows you to convert scanned images to common file types with editable and searchable text. OCR capabilities also enhance the indexing and retrieval of documents.

- When you select **Save as Editable Text**, you can choose between **Rich Text (.rtf)** and plain **Text (.txt)** format.
- When you choose to scan as a PDF file, you have the option to select **Searchable PDF**, which also uses OCR and will preserve formatting of the original file; the text content is searchable in PDF readers, such as Adobe® Reader or Acrobat®.



Select the OCR language

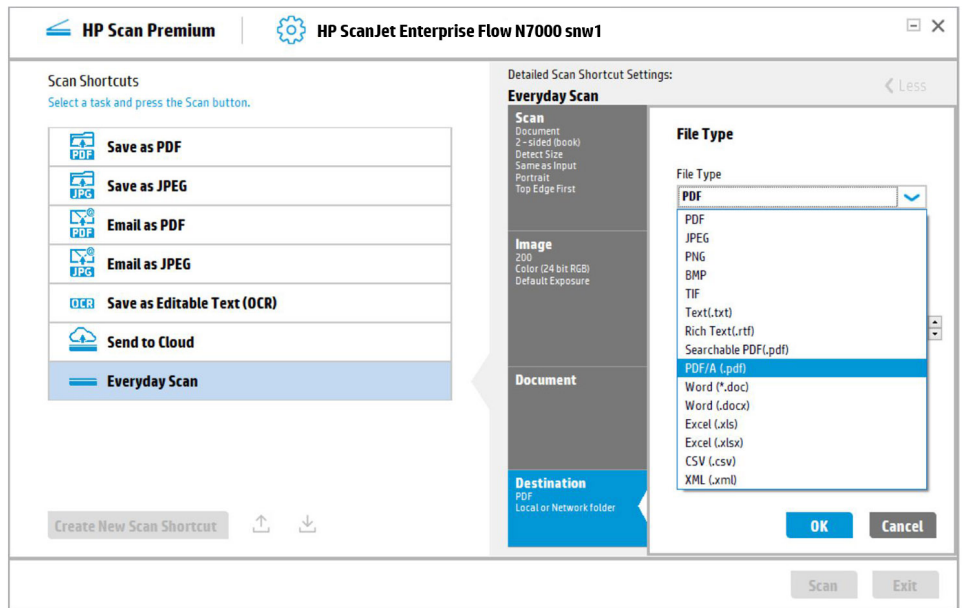
HP Scan Premium's OCR software is able to recognize 36 different languages. To access the language drop-down list, click **More, File Type, Set OCR language**.



HP Scan Premium file formats

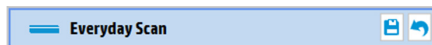
Whether you need image-only files or optical character recognition, HP Scan Premium has you covered with multiple file type options:

- **PDF image (.pdf)** is an image file. You cannot search for text inside this file type.
- **Searchable PDF (.pdf)** contains searchable text. Document appearance is preserved.
- **PDF/A (.pdf)** meets ISO requirements for long-term archival of electronic documents.
- **Rich Text Format (.rtf)** can be edited by most word processing programs.
- **Text (.txt)** creates a plain text file that can be opened in any word processing program.
- **JPEG image (.jpg)** is a compression method commonly used for digital photos. The amount of compression can be specified.
- **TIFF (.tif)** is the Tagged Image File Format. You can also choose single or multi-page output.
- **Bitmap image (.bmp)** is a raster graphics image file format used to store bitmap digital images.
- **Portable Network Graphics (.png)** is a raster graphics file format that supports lossless data compression. It was designed for transferring images on the Internet.



About Everyday Scan

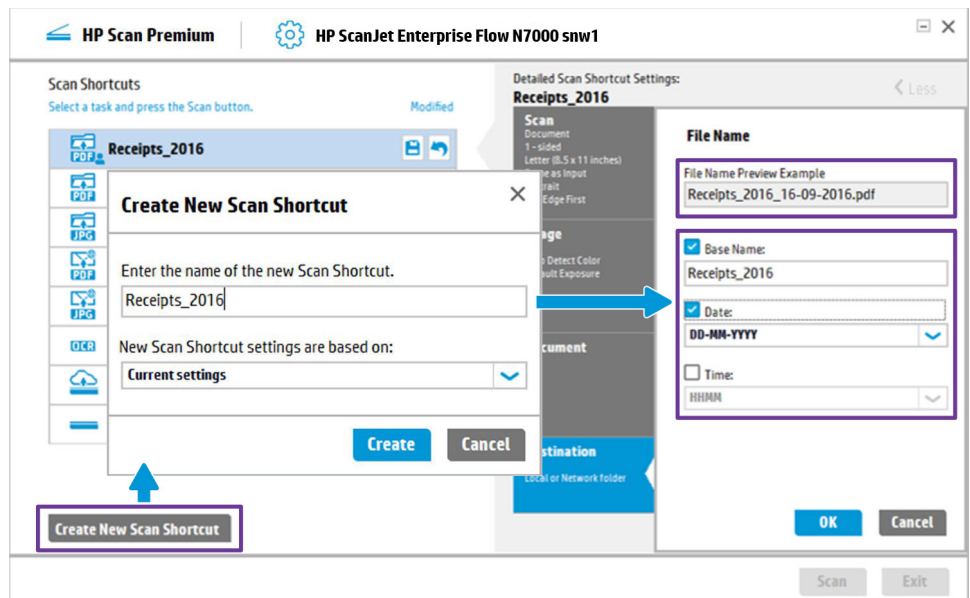
This predefined shortcut is intended for quick one-time tasks. All scan settings are available in this shortcut, giving you the flexibility to modify any settings needed. After using, you can quickly undo any changes or save them for the next session.



Save customized shortcuts

Quickly scan using your most-used settings—then save the settings as a new shortcut. Now you can consistently execute jobs at the touch of a button.

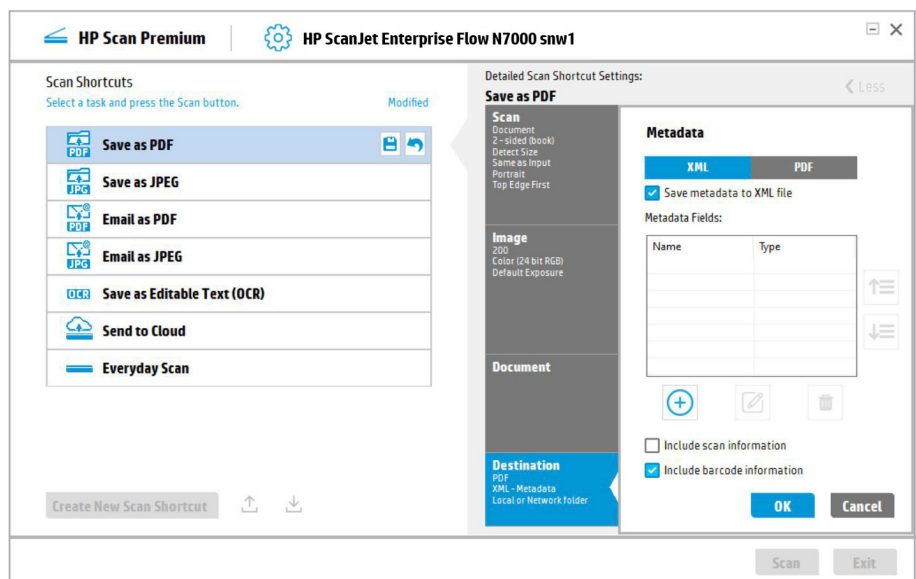
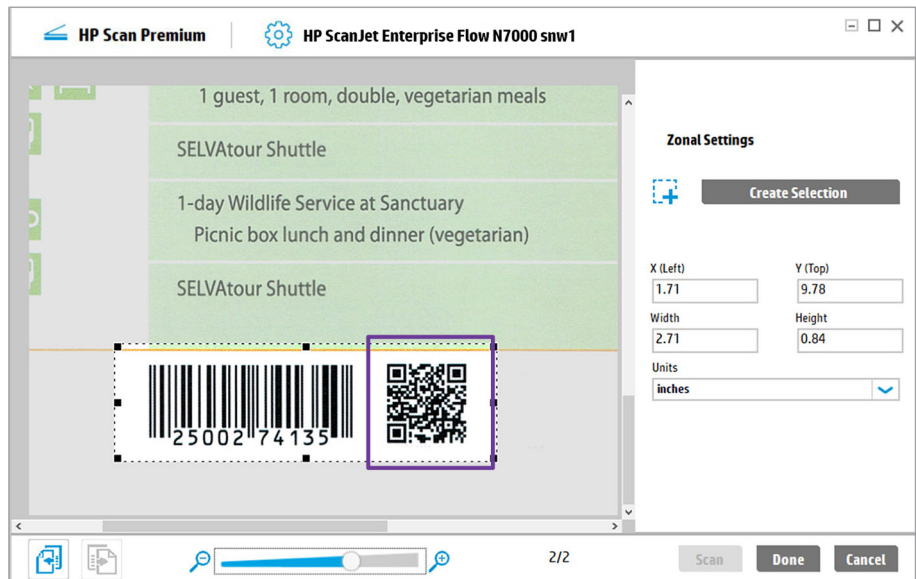
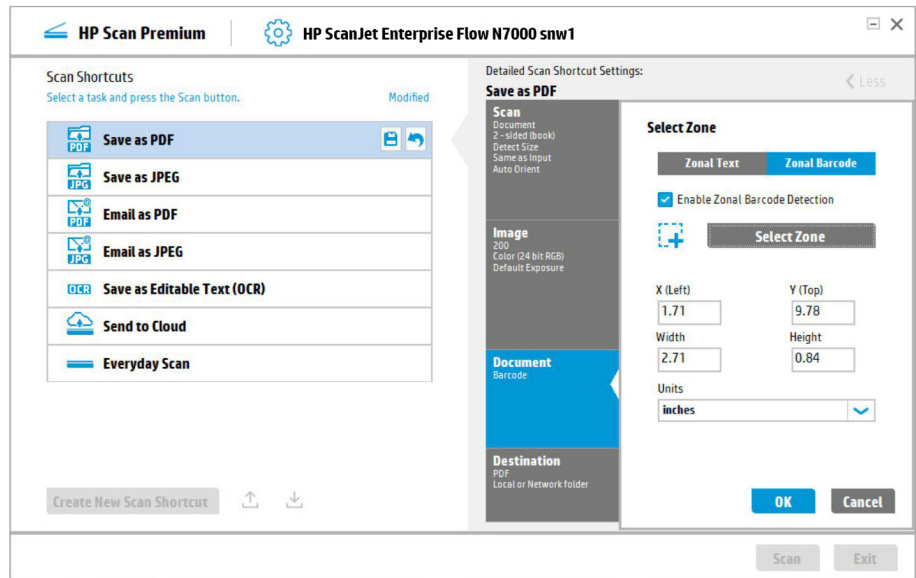
- Fast way to create new scan shortcut: specify desired settings and click the icon **Scan modifications to this scan**.
- Another method is to click **Create New Scan Shortcut** at any time.



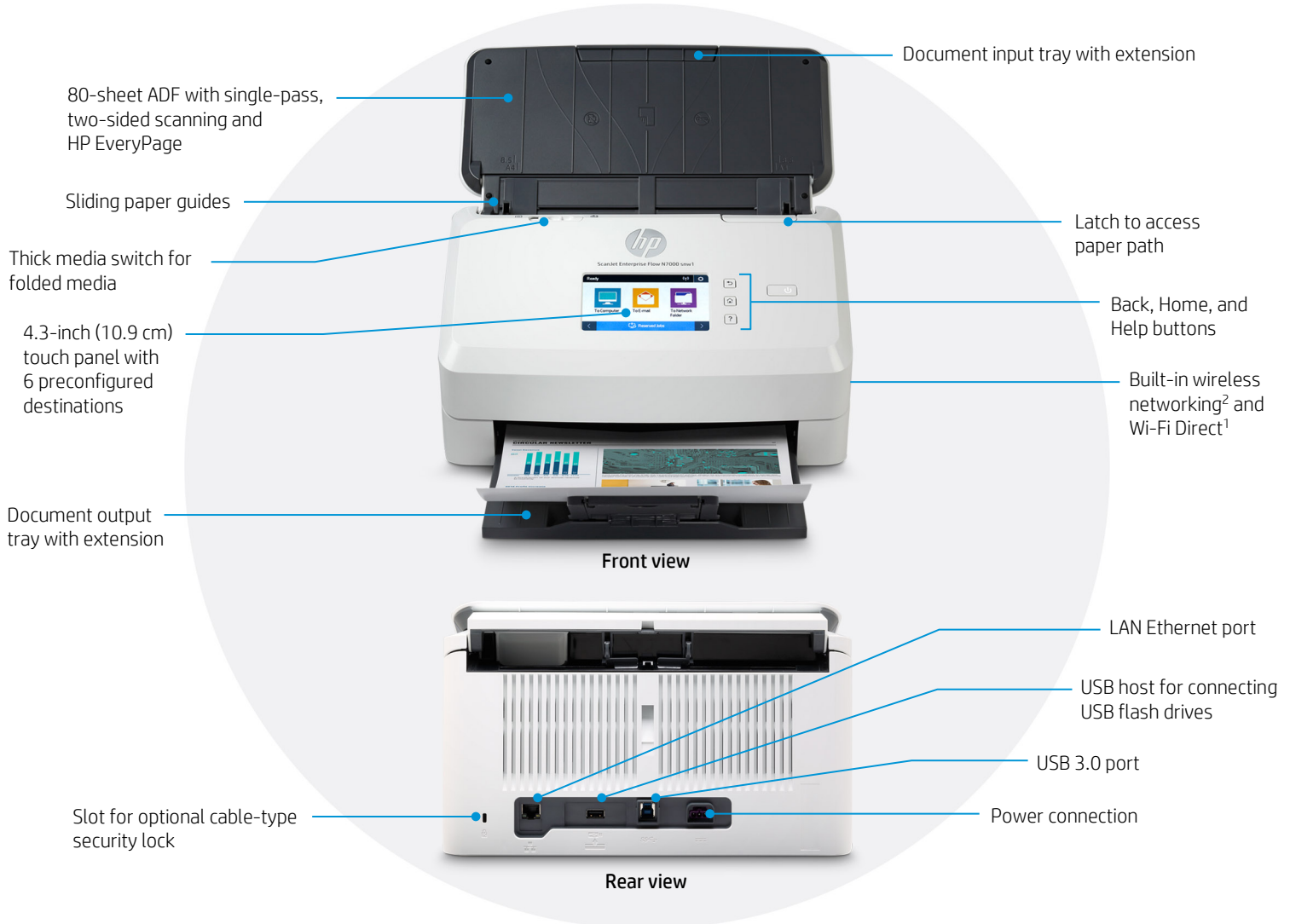
Detect and scan a barcode

HP Scan Premium lets you detect a barcode in a document and use its information to name the file.

1. Select **Select Zone**.
2. Click **Zonal Barcode**.
3. Click **Enable Zonal Barcode Detection**.
4. Click **Select Zone**.
5. Click **Scan** button.
6. Move the rectangle to barcode zone and click the **Done** button.
7. Click **Barcode Value** button at Destination.
8. Save metadata to XML file.



Get to know the HP ScanJet Enterprise Flow N7000 snw1



At a glance

Model (product number)	HP ScanJet Enterprise Flow N7000 snw1 (6FW10A)
Scan speeds (simplex/duplex)	Up to 75 pages per minute (ppm)/150 ipm ⁴
ADF capacity	80-sheet ADF; scans media sizes up to 122 inches (309.9 cm)
Recommended daily duty cycle	Up to 7,500 pages
Connectivity	Ethernet 10/100/1000 Base-TX; USB 3.0
Wireless connectivity	Wireless 802.11b/g/n, ² Wi-Fi Direct ¹
Scan destinations	Scan to PC, ⁸ Scan to USB Drive, Scan to Email, Scan to Network Folder, Scan to SharePoint, Scan to Shortcut, Scan to Cloud
Mobile scanning	Initiate scans from mobile devices with the HP JetAdvantage Capture App ¹
Software included	HP Scan Premium (with built-in OCR), WIA, TWAIN, ISIS, I.R.I.S. Readiris Pro, I.R.I.S. Cardiris (Win only)
Media weight supported	11.4 to 93.3 lb (43 to 350 g/m ²)

What's new?



HP ScanJet
Enterprise Flow
N7000 snw1
(6FW10A)



HP ScanJet
Enterprise Flow
7000 s3
(L2757A)

4.3-inch (10.9 cm) touch panel with 6 preconfigured, commonly used destinations	2-line LCD display with Simplex/Duplex, Cancel, Tool, and Power buttons	Easily manage and send scans from the touch panel to email, network folders, PC, ⁸ and more
HP Scan Premium Software	HP Smart Document Scan Software	Improved software experience
Scan speeds up to 75 ppm/150 ipm ⁴	Scan speeds up to 75 ppm/150 ipm ⁴	Blazing-fast scan speeds
80-sheet ADF	80-sheet ADF	Scan jobs easily with a large ADF
7,500-page daily duty cycle	7,500-page daily duty cycle	High duty cycle
USB 3.0, scan to USB drive, built-in wireless network, ² Wi-Fi Direct, ¹ and Ethernet	USB 2.0, USB 3.0	Increased sharing and digital sending options
Initiate scans from mobile devices with the HP JetAdvantage Capture App ¹	Not supported	A more comprehensive solution
Supports 11.4 to 93.3 lb (43 to 350 g/m ²) media weight	Supports 10.7 to 110 lb (40 to 413 g/m ²) media weight	ADF media weight capacity slightly smaller

Technical specifications

HP ScanJet Enterprise Flow N7000 snw1

Product number	6FW10A
Scanner type and modes supported	Sheet-feed scanning with ADF, single-pass two-sided scanning, color, grayscale, or black-and-white
Scan technology	CMOS Contact Image Sensor (CIS) using LED light source
Light source (scanning)	LED
Other advanced features	Auto-color detect, auto-crop, auto-exposure, auto-orient, optical character recognition (OCR), edge removal, background cleanup, remove hole, color drop out, straighten the page, scan to cloud, scan to email, PDF security, misfeed detection advance setting, batch processing, barcode, scan to multiple destinations
Duty cycle (recommended)	7,500 pages per day
Control panel	4.3-inch (10.9 cm) touch panel with 6 preconfigured destinations; Back button, Home button, Help button
Scan speed at 300 dpi⁴	Up to 75 ppm/150 ipm (black-and-white, grayscale, and color)
Scan resolution	Optical: up to 600 dpi; Output dpi settings: 75, 150, 200, 240, 300, 400, 500, 600, 1200
Bit depth and grayscale	24-bit external, 48-bit internal; 256 grayscale levels
Compatibility	TWAIN certified version 2.1, ISIS, WIA
File formats (text and images)	For text and images: PDF, PDF/A, Encrypted PDF, JPEG, PNG, BMP, TIFF, Word, Excel, PowerPoint, Text (.txt), Rich Text (.rtf) and searchable PDF
Scan input modes	Two scan modes (simplex/duplex) with 4.3-inch (10.9 cm) color touchscreen on front panel for HP Scan Premium in Win OS, HP Easy Scan/ICA in Mac OS, and third-party applications via TWAIN, ISIS, and WIA
Memory	1 GB
Processor	666 MHz
ADF media specifications	
Input capacity	Up to 80 sheets (80g/m ²)
Custom sizes	2.0 x 2.9 in to 8.5 x 122 in (5.08 x 7.36 cm to 21.6 x 309.9 cm)
Standard sizes	Letter, legal, executive; A4, A5, A6, A7, A8, B5, B5 (JIS); long page support up to 122 in (309.9 cm)
Media weights	11.4 to 93.3 lb (43 to 350 g/m ²)
Media types	Cut sheet paper, printed paper (laser and ink), pre-punched paper, bank checks, business cards, freight bills, carbonless forms, plastic carrier sheets for easily damaged documents, previously stapled media with staple removed, plastic cards up to 0.05 in (1.24 mm)
Connectivity	Ethernet 10/100/1000 Base-TX, USB 3.0
Wireless connectivity	Wireless 802.11b/g/n, ² Wi-Fi Direct ¹
Scan destinations	Scan to PC, ⁸ Scan to USB Drive, Scan to Email, Scan to Network Folder, Scan to SharePoint, Scan to Shortcut, Scan to Cloud
Mobile capabilities	Initiate scans directly from mobile devices via wireless network and Wi-Fi Direct using the HP JetAdvantage Capture App, ¹ and then edit, save, and share files
Compatible operating systems	Microsoft Windows: 10, 8.1, 7, XP: 32-bit and 64-bit, 2008 R2, 2012 R2, 2016, 2019 MacOS: Catalina 10.15, Mojave 10.14, High Sierra 10.13 Linux [®] and Citrix [®] ready
Minimum system requirements, Windows	Compatible Windows OS, 2 GB available hard disk space, CD-ROM/DVD drive or Internet connection, USB port, Microsoft Internet Explorer
Minimum system requirements, Mac	Compatible Mac OS, 1 GB HD, Internet required, USB
Dimensions (width x depth x height)	12.2 x 7.8 x 7.5 in (310 x 198 x 190 mm) ⁹
Weight	8.8 lb (4.0 kg)
What's in the box	HP ScanJet Enterprise Flow N7000 snw1 Sheet-feed scanner, installed roller kit (~100,000 pages), installation guide, support flyers, power cord, USB cable
Software included	HP Scan Premium (with built-in OCR), WIA, TWAIN, ISIS, I.R.I.S. Readiris Pro and Cardiris (Win only)

HP ScanJet Enterprise Flow N7000 snw1

Warranty

One-year bench limited warranty whole unit replacement, phone and Web support included. Warranty may vary by country as required by law. Go to hp.com/support to learn about HP world-class service and support options in your region.

Environmental specifications

HP ScanJet Enterprise Flow N7000 snw1

Environmental ranges

Temperatures Operating: 50 to 95° F (10 to 35° C); Recommended operating: 63.5 to 77° F (17.5 to 25° C); Storage: -40 to 140° F (-40 to 60° C)

Relative humidity range Operating range: 30 to 70% RH (non-condensing); Storage range: 10 to 80% RH (non-condensing)

Acoustic sound power emissions

7.0 B(A)

Power specifications¹⁰

Power supply External power adaptor; Input: 90 to 264 VAC (50/60 Hz)

Power consumption Ready: 5.8 watts, Sleep: 1.9 watts, Off/Auto-off: 0.1 watts

Energy-saving features HP Instant-on Technology,⁶ HP Auto-Off Technology⁷

Environmental specifications

ENERGY STAR 3.0 certified, ErP Lot 26, CECP, EPEAT⁵ Silver; RoHS-compliant, HP GSE standard

Safety and regulatory compliance

IEC 60950-1:2005 +A1:2009+A2:2013/EN60950-1:2006 +A1:2009 +A1:2010+A12:2011+A2:2013; IEC 62479:2010 / EN 62479:2010; IEC 62471:2006/ EN62471:2008; GB4943-2011

Electromagnetic emission standard

CISPR 22:2008 & CISPR 32: 2012/ EN 55032:2012 - Class B, EN 61000-3-2: 2014, EN 61000-3-3: 2013, EN 55024: 2010, FCC Title 47 CFR, Part 15 Class B / ICES-003, Issue 6, GB9254-2008, GB17625.1-2012 EN 300 328 V2.1.1

Ordering information

Use accessories and supplies specifically designed for the scanner to help provide efficient performance. To order the accessories and supplies listed here, go to hp.com. To contact HP by country, please visit hp.com/go/contact. If you don't have access to the Internet, contact your qualified HP dealer, or call HP (U.S.) at (800) 474-6836.

Scanner	HP ScanJet Enterprise Flow N7000 snw1 Sheet-feed Scanner	6FW10A
Long life consumable	HP ScanJet Ent Flow 5000 s4/5000 s5/7000 s3/N7000 snw1 roller replacement kit (~100,000 pages)	L2756A
Accessories	Carrier sheet kit 10-pack cleaning cloth kit	8PA50A C9943B
HP Care Pack Services¹¹	HP 3 year Standard Exchange ScanJet N7000 Service HP 3 year Next Business Day Exchange ScanJet N7000 Service HP 4 year Next Business Day Exchange ScanJet N7000 Service HP 5 year Next Business Day Exchange ScanJet N7000 Service HP 3 year Next Business Day Onsite Exchange ScanJet N7000 Service HP 4 year Next Business Day Onsite Exchange ScanJet N7000 Service HP 5 year Next Business Day Onsite Exchange ScanJet N7000 Service HP 3 year Return to Depot Scanjet N7000 Service HP 1 year Post Warranty Standard Exchange Scanjet N7000 Service HP 1 year Post Warranty Next Business Day Exchange Scanjet N7000 Service HP 1 year Post Warranty Next Business Day Onsite Exchange Scanjet N7000 Service HP 1 year Post Warranty Return to Depot Scanjet N7000 Service HP Install Service wireless/network Personal Scanner & Printer	UD3E9E UD3C0E UD3C1E UD3C2E UD3C3E UD3C4E UD3C5E UD3C6E UD3C7PE UD3C8PE UD3C9PE UD3J0PE U9JT2E

¹ Requires the HP JetAdvantage Capture App. Download the app at hp.com/go/documentmanagement. Wireless performance is dependent on physical environment and distance from access point and may be limited during active VPN connections. Wi-Fi Direct® scanning requires the mobile device be connected directly to the Wi-Fi network of the scanner.

² Wireless performance is dependent on physical environment and distance from access point and may be limited during active VPN connections.

³ HP Web Jetadmin is available for download at no additional charge at hp.com/go/wja.

⁴ Scan speed measured at 300 dpi (black-and-white, grayscale, and color). Actual processing speeds may vary depending on scan resolution, network conditions, computer performance, and application software.

⁵ EPEAT registered where applicable. EPEAT registration varies by country. See epeat.net for registration status by country.

⁶ The HP ScanJet Enterprise Flow N7000 snw1 uses an LED light source with no warm-up time required, helping you conserve energy compared with products that use cold cathode fluorescent lamp (CCFL) copying.

⁷ HP Auto-Off technology capabilities are subject to device and settings.

⁸ Destination PC must have driver and software installed and must be on the same network as the scanner.

⁹ Product dimensions reflect device with input and output trays folded and covers closed.

¹⁰ Power requirements are based on the country/region where the scanner is sold. Do not convert operating voltages. This will damage the device and void the product warranty. Power consumption value typically based on measurement of 115V device.

¹¹ To view entire list of HP Care Pack Services, visit hp.com/go/cpc.

Sign up for updates
hp.com/go/getupdated



Share with colleagues

© Copyright 2020 HP Development Company, L.P. The information contained herein is subject to change without notice. The only warranties for HP products and services are set forth in the express warranty statements accompanying such products and services. Nothing herein should be construed as constituting an additional warranty. HP shall not be liable for technical or editorial errors or omissions contained herein.

Acrobat and Adobe are trademarks of Adobe Systems Incorporated. Google Drive is a trademark of Google Inc. Citrix is a registered trademark of Citrix Systems, Inc. and/or one or more of its subsidiaries, and may be registered in the United States Patent and Trademark Office and in other countries. ENERGY STAR is a registered trademark owned by the U.S. Environmental Protection Agency. Linux is the registered trademark of Linus Torvalds in the U.S. and other countries. Microsoft, SharePoint, and Windows are U.S. registered trademarks of the Microsoft group of companies.

4AA7-6799ENW, March 2020, Rev. 2

