

16th STREET PAVING
COUNTY HOSPITAL ROAD
26th STY D TO PARK

205

400

LEWIS

F. B. 205

Table showing the difference of altitude and departure in running 80 chains at any course from 1 to 60 minutes.

MINUTES	LKS.	MINUTES	LKS.	MINUTES	LKS.
1	2 1/3	21	49	41	95 2/3
2	4 2/3	22	51 1/3	42	98
3	7	23	53 2/3	43	100 1/3
4	9 1/3	24	56	44	102 2/3
5	11 2/3	25	58 1/3	45	105
6	14	26	60 2/3	46	107 1/3
7	16 1/3	27	63	47	109 2/3
8	18 2/3	28	65 1/3	48	112
9	21	29	67 2/3	49	114 1/3
10	23 1/3	30	70	50	116 2/3
11	25 2/3	31	72 1/3	51	119
12	28	32	74 2/3	52	121 1/3
13	30 1/3	33	77	53	123 2/3
14	32 2/3	34	79 1/3	54	126
15	35	35	81 2/3	55	128 1/3
16	37 1/3	36	84	56	130 2/3
17	39 2/3	37	86 1/3	57	133
18	42	38	88 2/3	58	135 1/3
19	44 1/3	39	91	59	137 2/3
20	46 2/3	40	93 1/3	60	140

Return to City Engineers Office
City Hall, San Diego, Cal.

TABLE FOR RUNNING ON SLOPES.

In the following table the first column shows the angle, the second the number of links to be added to a chain on the slopes, to make one chain, horizontal measurement.

Angle	COR. IN LINKS	Angle	COR. IN LINKS	Angle	COR. IN LINKS	Angle	COR. IN LINKS
0		0		0		0	
4	0.24	11	1.88	18	5.14	25	10.54
5	0.38	12	2.24	19	5.76	26	11.26
6	0.55	13	2.63	20	6.42	27	12.24
7	0.76	14	3.06	21	7.11	28	13.37
8	0.98	15	3.53	22	7.85	29	14.34
9	1.24	16	4.02	23	8.64	30	15.47
10	1.55	17	4.56	24	9.47	35	22.07

Return to City Engineers Office
City Hall, San Diego, Cal.

3082
364
3746 1/2

1

477
34,09 497
34,49

16th Street.
Paving

Hutchison 4/1/05
Eyans
Soriver
Est

Note. 30' L. of H. 18' from West Curb to Rail
" " " " 21.5' " East " " "
50' L. of H. 18.5' " Curb to Rail.

W 452
Prop.

	H.I. 3582 119 3701	Property Line	Gutter	5' from Curb	2' from Rail	2' from Rail	5' from Curb	Gutter	Curb	
So. Side of St.		Curb 154	18	2.1	2.4	2.8	3.0	3.2	3.02	34.49 T.P. Prop. 34.69 " " "
50' S. of St.			29	3.1	3.2	3.2	3.8	4.2		
110'			35	3.7	3.8	3.8	4.3	4.8		
150'			42	4.3	4.5	4.6	5.0	5.7		
200'			54	5.2	5.2	5.4	5.6	6.2		
250'			61	6.0	6.0	6.1	6.1	7.2		
(300) N. Side of St.		Curb 608	65	6.4	6.7	6.8	7.0	7.7	7.60	6.84 T.P. Prop.
14' S. of St.		Prop 6.4	65	6.4	6.8	6.9	6.9	7.0		7.9
	2.25	H.I. 3372	554	31.47						
N. Side of St.		3.0	3.3	3.5	3.8	3.7	3.5	3.5	4.0	
40' " " "		3.1	3.6	3.6	3.9	4.0	3.9	3.9	4.0	
53' " " "		3.2	3.2	3.3	4.0	4.0	3.9	4.0	4.4	
66' " " "		3.9	3.7	3.9	4.1	4.0	3.9	4.2	5.2	
(80) S. Side of St.		Curb 373	40	3.9	3.9	4.3	4.6	4.9	4.80	T.P. + Rail. 4.30
50' N. of St.			45	4.2	4.4	4.4	4.6	5.3		
100' " " "			47	4.6	4.7	4.7	4.9	5.6		
150'			50	4.7	4.8	4.9	5.1	5.8		

	Hi.	East Side	Gutter	5' From Curb	2' From Rail	2' From Rail	5' From Curb	Gutter	West Side	
200' East of I	3372	57	57	49	50	51	53	61		
200' " " "			54	51	52	53	56	64		
300' No Line of V		Curb 475	54	50	53	53	59	66	Curb 622	Top of Rail 548
14' Surf No Line of V		41	47	46	51	54	54	59	65	
296	32.74	394	29.78							
27' Surf No Line of V		31	35	36	38	40	44	46	54	
40' " " "		31	35	36	40	42	44	48	57	
53'		28	37	39	41	41	44	48	55	
66' " " "		30	40	41	44	44	44	48	59	
(80) Surf No Line of V		Curb 372	42	40	44	44	49	56	Curb 526	Top of Rail 456
50' " " "			44	43	46	46	49	56		
100' " " "			46	45	46	47	52	58		
100' " " "			49	45	48	50	51	60		
700'			51	47	49	51	54	62		
750'			53	49	51	54	56	64		Top of Rail 500
300' Min. J.		Curb 46	55	49	55	56	60	66	Curb 631	
1.99	3091	382	28.92							

	H.I.	East Line	Gutter	5' from Gutter	8' from Car track	8' from Car track	5' from Gutter	Gutter	West Line	
14' So of N.V.	3091	2.3	3.2	3.3	3.4	3.7	4.0	4.3	4.6	
27' " " "		2.6	3.0	3.1	3.6	3.8	4.0	4.2	4.5	
40' " " "		2.5	3.1	3.3	3.7	3.8	4.1	4.4	4.6	
53' " " "		2.8	3.3	3.4	3.6	3.8	4.1	4.7	5.1	
66' " " "		2.7	3.5	3.6	3.8	3.9	4.6	5.1	5.5	
(80) So Line of N.V.		Curb 2.88	3.6	3.5	3.9	4.2	4.8	5.3	Curb 4.88	Top of Rail 4.90
50' So of N.V.			4.5	4.4	4.5	4.9	5.4	6.1		
100' " " "			5.1	4.9	5.1	5.4	5.8	6.5		
150' " " "			5.8	5.7	5.9	6.1	6.5	7.2		
200' " " "			6.3	6.1	6.5	6.8	6.9	7.8		
250' " " "			7.0	6.8	7.1	7.3	7.6	8.7		
(300) N. Line of L		Curb 6.91	7.5	7.2	7.9	8.3	8.6	9.5	Curb 8.95	Top of Rail 8.10
	0.37	2.504	6.24	24.67						
14' So of N. Line of L		1.3	2.0	2.1	2.4	2.7	3.0	3.3	3.9	
27' " " " " " "		1.7	1.9	2.4	2.7	2.9	3.1	3.2	4.0	
40' " " " " " "		1.9	2.5	2.6	3.0	3.2	3.3	3.6	4.2	
53' " " " " " "		2.6	3.0	2.9	3.3	3.7	3.4	3.5	4.3	

	H. 1.	East Line	Gutter	5' from Curb	2' from Rail	2' from Rail	5' from Curb	Gutter	West Line	
66' So of No. Line of L	25.04	3.1	3.2	3.3	3.7	3.6	3.9	4.6	4.7	
(80) So of L		Curb 3.0	5.1	4.3	3.9	4.0	3.6	4.2	Curb 3.0	Top of Rail 4.3
50' So of L			4.9	4.5	5.0	5.1	5.4	5.9		
100' " "			5.6	5.5	5.7	6.1	6.6	7.3		
150' " "			6.9	6.5	6.8	6.8	7.4	8.1		
200' " "			7.6	7.4	7.5	7.8	8.2	9.1		
250' " "			8.3	8.2	8.4	8.6	9.2	9.9		
(300) N. Line of M.		Curb 10.5	10.7	9.8	9.5	9.1	8.7	8.7	Curb 8.3	
154	19.02	7.56	17.48							
14' So of N. Line of M.		1.4	2.7	2.6	3.2	3.4	3.7	4.0	4.7	
27' " " " "		1.5	3.1	3.1	3.5	3.7	3.7	3.7	4.8	
40' " " " " "		2.3	3.0	3.3	3.4	3.5	4.1	4.3	5.5	
53' " "		1.8	3.1	3.4	3.8	3.8	4.2	4.8	5.7	
66' " "		2.1	3.2	3.7	4.0	4.1	4.6	5.2	5.5	
(80) N. Line of M.		Curb 2.9	2.8	4.0	4.2	4.3	4.7	5.3	Curb 5.0	Top of Rail 4.2
50' So of M			4.5	4.7	4.6	4.9	5.4	6.0		
100' " "			5.0	5.1	5.2	5.3	5.7	6.0		

16th Street

	H.I.	East Line	Gutter	5' from Curb	2' from Roll	2' from Roll	5' from Curb	Gutter	West. L.
150' East N	1902		5.7	5.7	5.6	5.7	6.0	7.2	
200' " " "			6.1	6.2	6.3	6.3	6.6	7.6	
250' " " "			6.7	6.7	6.9	7.0	7.2	8.1	
300' No. line of N		Curb 6.50	7.2	7.1	7.4	7.6	7.9	8.9	Curb 8.52
	3.06	15.78	6.30	12.72					To Prof. Roll, 7.50 11.62
14' East No. line of N.		3.2	3.5	3.7	4.1	4.4	4.8	5.1	5.8
27' " " " "		3.3	3.7	3.7	4.3	4.7	4.7	4.7	5.3
40' " " " "		3.4	3.6	3.6	4.1	4.8	5.1	5.2	5.8
53' " " " "		3.7	4.0	3.7	4.3	4.7	5.1	5.2	5.7
66' " " " "		3.4	4.3	4.1	4.7	5.1	5.8	6.3	6.9
(80') So. line of N		Curb 4.75	5.1	4.6	5.0	5.1	5.6	6.5	Curb 6.80
	0.28	14.98	1.75	14.00					4.90 West. L. 14.12 13.97
15' East N			3.5	3.4	3.6	3.7	4.6	5.4	

16th St.

50' So of N.

West gutter ^{H.I.} 1428 5.7

5' East of curb 5.5

10 " " " 4.8

18 " " " 4.6

33 " " " 4.1

46 " " " 3.9

66 " " " 4.1

75' So of N

66' East of West curb 4.1

42' " " " " 4.3

39' " " " " 4.7

36 " " " " 5.0

13 " " " " 5.2

Gutter West 5.9

4/105 } Hutchison
 1/1 } Evans
 1/1 } Kinnon

7

100' So of N.

West gutter ^{H.I.} 1428 6.1

13' East of West curb 5.9

26 " " " " 5.3

39' " " " " 5.1

52' " " " " 4.7

66 " " " " 4.6

110' So of N. St.

66' East of West curb 4.6

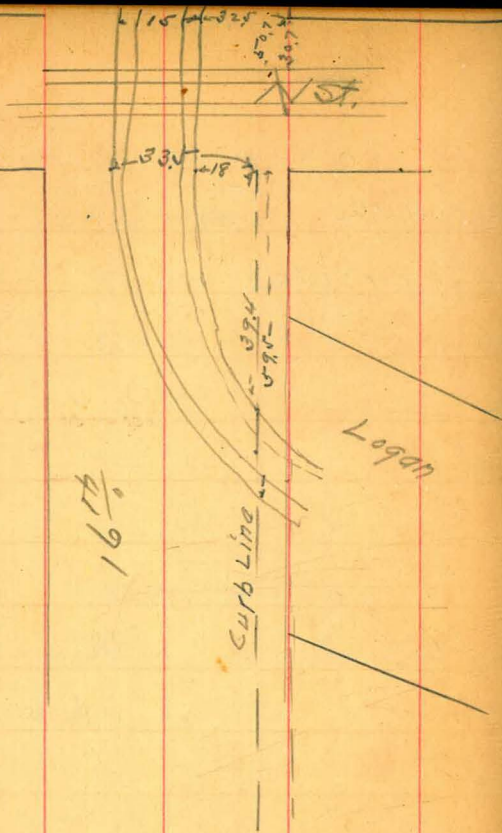
53' " " " " 4.8

39' " " " " 5.2

16 " " " " 5.3

13 " " " " 5.9

West gutter 6.7



187

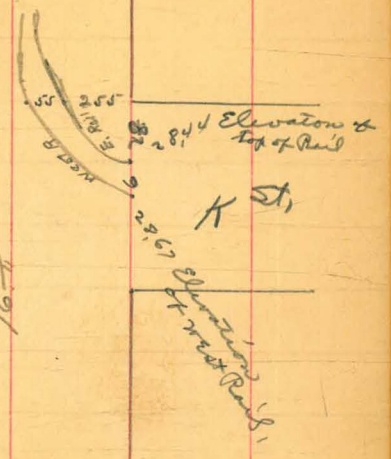
327
186
22

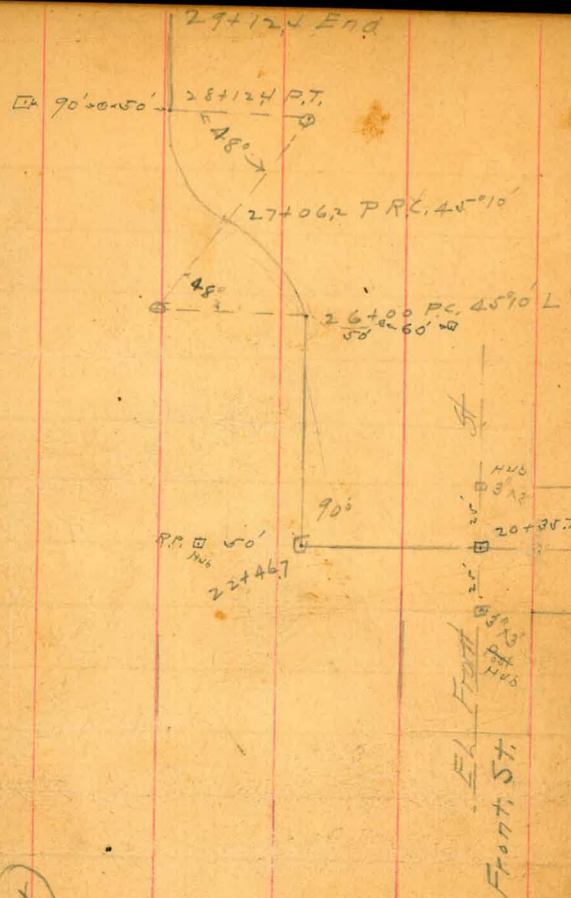
52
15
37
18
14
25

175

29,72
480
33,288

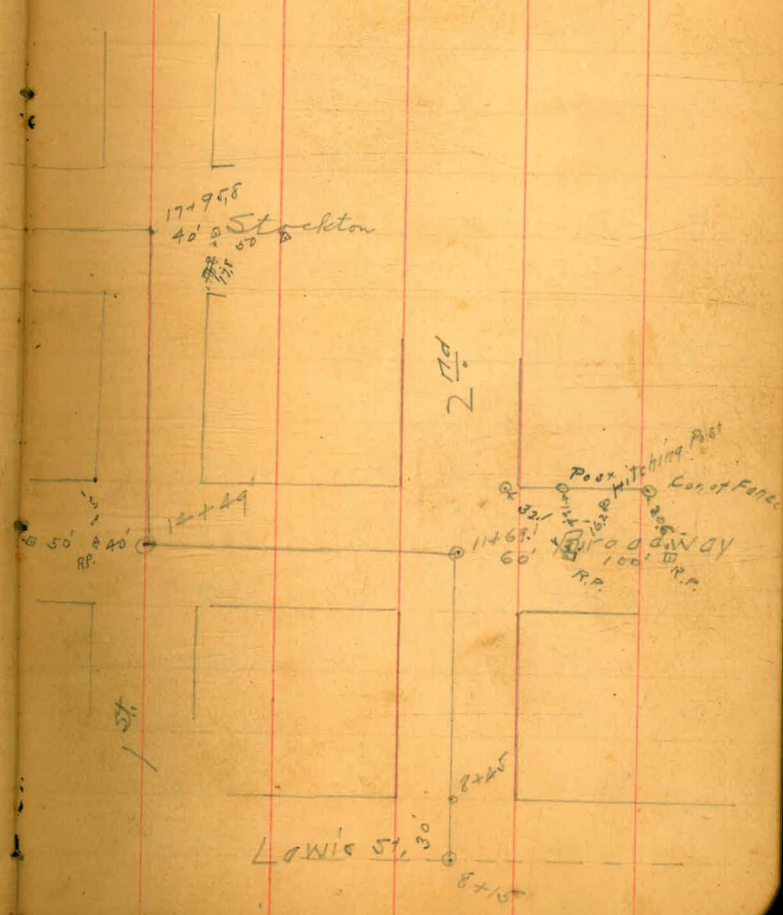
484
2844
461
28,67





4/7/05
 Hutchison
 Evans
 Scriven
 County Hospital
 9

Original Notes See Book 121 P35



County Hospital
Wagon Road

10

	7.22	296.67		289.45
B.M.	3.42	296.74	3.35	293.2
8+15			4.4	292.3
+45			4.5	292.2
9			4.6	292.1
+50			5.2	291.2
10			5.9	290.8
+50			6.4	290.3
11			6.7	289.8
+44.1			7.4	289.3
11 11.69.1			8.13	288.6
12			7.6	289.1
+0.9			7.0	289.7
+50				
13			6.7	290.0
+50			5.3	291.4
14			5.3	293.4

Spk in Elect Pole S.W. Cor Lewis + 2 nd ²²⁰ ₂₄			
+20	296.74	4.1	292.6
+49		5.0	291.7
4.63	296.38	4.99	291.75
+74		4.4	292.0
15		4.3	292.1
+50		4.6	291.8
16		5.2	291.2
+50		6.7	289.7
17		6.7	289.7
+50		6.6	289.8
+70		6.7	289.7
17+9.58		6.2	290.2
18		6.2	290.2
+50		6.5	289.9
19		5.5	290.9

County Hospital
Wagon Roads

+50	296.38	37	292.7
20		36	292.8
+35.7		30	293.4
B.M.	5.84	300.66	1.56
			294.82
+50		66	294.1
21		57	294.8
+35		56	295.1
+50		65	294.2
72		77	292.8
+30		72	293.5
+46.7		88	291.7
73		67	293.8
+50		65	294.2
74 +80		47	296.0
74		48	295.9
+50		50	295.7
75		78	292.9

Spt in Elect Light Pole S.E. Cor. of Streets + Front

207.25	300.66	8.5	291.9
+50		11.2	289.5
26		11.6	289.1
7.06	296.58	11.14	289.52
+50		8.5	288.1
77		8.2	288.4
+0.62		8.1	288.5
75		7.8	288.8
78		6.0	290.6
+11.2		5.9	290.7
+50		5.7	291.4
+11.2		3.0	293.6
End of East Arch		2.98	293.0
" " West "		2.80	293.8

	Grades	L	C	R
8+15 Ct. Aids of Lewis St.	<u>292.00</u>	$\frac{+0.3}{12.7}$	-0.0	$\frac{+0.4}{12.7}$
8+46 No Line of Lewis	<u>292.00</u>	$\frac{+0.5}{12.3}$	-0.0	$\frac{+0.7}{12.4}$
9	291.70	$\frac{+0.4}{12.7}$	0.0	$\frac{+0.4}{12.7}$
+50		$\frac{0.0}{12.0}$	-0.4	$\frac{0.0}{12.0}$
10		$\frac{0.0}{12.0}$	-0.6	$\frac{0.0}{12.0}$
+50		$\frac{-0.4}{12.6}$	-0.8	$\frac{-0.4}{12.6}$
11		$\frac{-0.2}{12.3}$	-1.0	$\frac{0.0}{12.0}$
+44 So Line of Broadway	<u>290.00</u>	$\frac{-1.1}{13.6}$	-1.4	$\frac{-0.4}{12.6}$
11+82 12' No. of Ct. of Broadway	<u>290.00</u>	$\frac{2.0}{14.0}$	-1.6	$\frac{-1.0}{15.0}$

Readings
at
Hypotenuse

County Hospital Wagon Road
4/12/05
Hutchinson
Series
Areas
Fill cut

	Fill	cut	Fill	cut
		4.70		
		7.20		
	0.00	4.80		
	4.80			
	7.20			
	14.88			
	13.35			
	28.72			
	63.00			

Areas cu/ds,

11+84

Toe of Slope

 $\frac{0.0}{12.0}$

0.0

 $\frac{0.0}{12.0}$

Fill

Cut

Fill

Cut

000

Broadway

11+84

 $\frac{0.0}{12.0}$

0.0

 $\frac{0.0}{12.0}$

000

11+84

290.00

 $\frac{-1.3}{12.0}$

-2.0

 $\frac{-1.4}{14.1}$

443.0

12+09

West Line of ~~29000~~ 29000 $\frac{-0.8}{18.2}$

-0.7

 $\frac{0.0}{12.0}$

136.2

+50

290.41

 $\frac{-0.8}{18.2}$

-2.0

 $\frac{-1.6}{14.1}$

409.0

13

West
Line of
290.91 $\frac{-0.8}{18.2}$

-1.5

 $\frac{-1.7}{12.5}$

35.77

+50

 $\frac{-0.2}{12.3}$

-0.5

 $\frac{-0.6}{12.9}$

17.1

775

 $\frac{0.0}{12.0}$

-0.5

 $\frac{-0.6}{12.9}$

135.6

000

Broadway

		L	ct.	R
+ 8v		$\frac{+0.4}{122}$	0.0	$\frac{-0.4}{12.6}$
14	291.71	$\frac{+1.4}{12.7}$	+1.0	$\frac{0.0}{12.9}$
+ 07 cut $\frac{1.0}{1.0}$	292.00 52.47	$\frac{+1.0}{12.5}$	+0.8	$\frac{0.0}{12.0}$
+ 20		$\frac{0.0}{12.0}$	0.0	$\frac{0.0}{7.2.9}$
14+61	292.00	$\frac{-0.5}{12.7}$	-0.7	$\frac{-0.5}{12.7}$

Areas cu. yds. 14

Fill	cut	Fill	cut,
2.4	2.40		
000	70.75		
	15.80		
000	000		
14.89			

St Street

Areas

Side	Grade		L	C	R
14+61	292.00	57.47	$\frac{-0.5}{12.7}$	-0.9	$\frac{-0.3}{12.3}$
14+74	292.00	57.47	$\frac{-0.2}{12.3}$	-0.5	$\frac{0.0}{12.0}$
+80			$\frac{0.0}{12.0}$	-0.4	$\frac{+0.2}{12.1}$
15	291.82	57.49	$\frac{+0.7}{12.1}$	$\frac{0.0}{6.0}$	$\frac{-0.3}{4.0}$
+85			$\frac{+0.7}{12.1}$	0.0	$\frac{0.0}{12.0}$
16	291.15	61.56	$\frac{+0.6}{12.3}$	$\frac{0.0}{4.0}$	$\frac{-0.4}{12.3}$
+20		63.55	$\frac{+0.8}{12.4}$	$\frac{0.0}{5.0}$	$\frac{-0.6}{12.9}$
+40			$\frac{0.0}{14.0}$		
+50		64.59	$\frac{-0.6}{12.9}$	-1.6	$\frac{-1.7}{10.5}$

Fill	Cut
15.45	
7.87	6.00
3.60	0.60
1.5	4.2
	3.7
	31.9
	4.3
4.49	2.49
9.24	2.96
0.0	0.0
32.16	

1st Street

			L	C	R
17+00	290.48	5.449	$\frac{-0.6}{12.7}$	-1.2	$\frac{-1.0}{13.5}$
+50		5.7 $\frac{5.2}{4}$	$\frac{-0.5}{12.8}$	-1.0	$\frac{-1.1}{13.6}$
17+71	290.00	5.853	$\frac{-0.5}{12.7}$	-0.5	$\frac{-0.2}{12.3}$
+90			$\frac{0.0}{12.0}$	0.0	$\frac{0.0}{12.0}$
18+06	290.00		$\frac{+0.4}{12.7}$	0.0	$\frac{+0.6}{12.3}$

Areas

Cut. Fill

	25.44
	22.8
	10.45
0.0	0.0
6.0	

16

Stockton, Ave

			L	C	R
18+06	290.00	5.8 5.3	$\frac{-0.7}{12.3}$	-0.4	$\frac{+0.4}{12.0}$
+36	290.00	5.8 5.3	$\frac{-0.7}{12.3}$	-0.6	$\frac{0.0}{12.0}$
+75	290.58	5.3 4.1	$\frac{-0.2}{12.3}$	-0.7	$\frac{0.0}{12.0}$
19+00	290.96 15	4.9 4.1	$\frac{0.0}{12.0}$	-0.6	$\frac{0.0}{12.0}$
+30		4.4 3.9	$\frac{+0.5}{12.3}$	0.0	$\frac{+0.5}{12.3}$
+50		4.2 3.3	$\frac{+0.6}{12.3}$	+0.3	$\frac{+0.5}{12.3}$
+75		3.8 3.3	$\frac{+0.4}{12.3}$	+0.6	$\frac{+0.4}{12.3}$
70	292.46	3.4 2.9	$\frac{+1.5}{12.7}$	0.0	$\frac{+0.5}{14.3}$
+10		3.3 2.8	$\frac{+1.0}{10.0}$	0.0	$\frac{+0.8}{12.0}$

Areas

Cut	Fill
1.2	4.89
	8.49
	9.70
	7.20
6.15	
10.29	
12.12	
12.0	
16.85	

Areas
Cut Fill

+36	Each line + front <u>293.00</u>	25 23	$\frac{+0.4}{12.2}$	00	$\frac{+0.6}{12.3}$	6.00	
20 +68	<u>298.00</u>	72 67	$\frac{+1.3}{12.7}$	+1.5	$\frac{+2.8}{13.4}$	44.17	
21	<u>293.18</u> 67	70 65	$\frac{+0.7}{12.6}$	+1.0	$\frac{+0.9}{12.4}$	22.0	
-25		69 64	$\frac{0.0}{12.0}$	+1.1	$\frac{+1.5}{12.8}$	23.14	
-50	$\frac{+0.5}{12.7}$	67 62	$\frac{-0.5}{12.6}$	00	$\frac{+0.9}{12.4}$	5.40	2.4
+60		67 62	$\frac{-1.0}{13.5}$	-1.2	$\frac{0.0}{12.0}$	11	14.10
77	<u>298.75</u> $\frac{57}{32}$	65 60	$\frac{-2.0}{15.0}$	-1.7	$\frac{-0.3}{12.5}$		30.27
-25		62 57	$\frac{-2.5}{15.7}$	-0.9	$\frac{0.0}{12.0}$		27.46

Stockton

		L	C	R	Cut	Fill
					Areas	
+47	6.3 58	$\frac{-1.9}{14.8}$	-2.6	$\frac{-1.5}{14.2}$		58.1
+59	6.2 57	$\frac{-2.2}{10.3}$	-2.7	$\frac{-1.6}{14.4}$		64.40
+62		$\frac{0.0}{12.00}$	0.0	$\frac{0.0}{12.0}$	0.0	0.0
<hr/>						
22+69		$\frac{0.0}{12.0}$	0.0	$\frac{0.0}{12.00}$	0.0	0.0
+62	6.2 57	$\frac{-1.6}{14.4}$	-2.0	$\frac{-0.8}{10.2}$		42.0
73	29432 59 54	$\frac{0.0}{12.0}$	-1.0	$\frac{0.0}{12.0}$		12.0
+15	5.8 52	$\frac{0.0}{12.0}$	0.0	$\frac{+1.0}{12.0}$	6.0	6.0
+50	5.6 51	$\frac{+1.3}{12.6}$	+0.9	$\frac{+1.7}{12.6}$		17.02

		Areas				Cut	Fill
+75	455 50	$\frac{+1.7}{12.7}$	+1.3	$\frac{+1.0}{12.5}$	30.78		
24	294.89 53 05	$\frac{+0.8}{12.6}$	+0.4	$\frac{+0.6}{12.3}$	13.34		
+20	0 <u>295.0</u> 52 47	$\frac{+0.6}{12.3}$	00	$\frac{00}{12.0}$	3.6		
+50	294.50 57 52	$\frac{+0.8}{12.4}$	+0.6	$\frac{+2.0}{12.0}$	24.42		
+70	36 31	$\frac{+0.7}{12.4}$	00	$\frac{+1.0}{12.5}$	10.2		
+80	0 <u>296.00</u> 34 29	$\frac{0.00}{12.0}$	-0.7	$\frac{-0.0}{12.0}$	8.4		
25	293.00 44 29	$\frac{+0.4}{12.2}$	$\frac{00}{6.0}$ -0.7	$\frac{-0.0}{12.0}$	1.2	6.3	
+15	51 46	$\frac{+0.9}{12.5}$	-0.3 $\frac{00}{3.0}$	$\frac{+1.0}{12.0}$	9.05	.75	
+25	46 51	$\frac{0.0}{12.0}$	-0.4 $\frac{00}{3.0}$	$\frac{+1.0}{12.5}$	5.0	2.8	
+35	291.25 62 57	$\frac{-0.7}{10.0}$	-1.3	$\frac{00}{12.0}$	20.45		

05

+50	290.40	6.9 6.4	$\frac{-0.7}{13.0}$	-1.6	$\frac{-1.5}{14.2}$
+60	<u>290.00</u>	7.4 6.9	$\frac{-0.6}{12.9}$	-1.4	$\frac{-1.5}{14.7}$
26	289.60	7.8 7.3	$\frac{-1.1}{13.6}$	-1.0	$\frac{-0.3}{12.5}$
+25		8.0 7.5	$\frac{-0.7}{13.0}$	-1.9	$\frac{-1.6}{14.4}$
+50		8.3 7.8	$\frac{-0.9}{13.4}$	-1.6	$\frac{-1.2}{13.8}$
26+60	<u>289.00</u>	8.4 7.9	$\frac{-0.6}{12.9}$	-1.3	$\frac{-0.8}{13.4}$
27	289.4	8.0 7.5	$\frac{-1.1}{13.6}$	-1.6	$\frac{-1.1}{13.6}$
+50	289.9	6.8 5.4	$\frac{-1.4}{13.8}$	-0.6	$\frac{-0.9}{13.2}$
+60	<u>290.00</u>	6.9 6.4	$\frac{-1.1}{13.6}$	-1.5	$\frac{-0.7}{13.0}$

Areas

Cut	Fill
	34.96
	31.57
	21.45
	39.83
	34.36
	26.10
	34.96
	20.76
	30.75

Road to County Hospital

28	29093 215	50.45	$\frac{-0.6}{12.9}$	-0.9	$\frac{-0.9}{13.4}$	20.68
+50		359.3	$\frac{-0.8}{13.2}$	-1.4	$\frac{-0.2}{12.8}$	23.85
29	29026 215	27.22	$\frac{-0.6}{12.4}$	-0.7	$\frac{-0.2}{12.3}$	12.32
+12	29025	25.22	$\frac{-0.1}{12.7}$	-0.4	$\frac{0.0}{12.9}$	5.44

End

Note - Culverts.

1' x 2' x 28" at Stat 27+00

1' x 2' x 26' " " 17+50

1' x 2' x 26' " " 11+75

Areas

22

Cut Fill

26th Street.

4/28/05

from No. Line of D to Park Line

	7.15	198.61		191.46
	6.63	204.83	9.41	198.20
B.M.	0.82	201.02	4.63	200.20
	North Line of D.			
West Line		4.0		197.0
Ch		4.0		197.0
+		4.7		196.3
Ch		6.6		194.4
+		10.1		190.9
-		10.9		190.1
East Line		11.0		190.0
	25' N. of D.			
Ch		10.7		190.3
-		10.9		190.1
5' west of East Curve		9.5		191.5
+		8.3		192.7
Ch		7.4		193.6

Hutchison
Elev
shown
show.

23

N.W. Cor. 26th & C, Top of Cement Post

1/4	4.8	196.5
-	3.5	197.5
W.L.	3.2	197.8
50' N. of		
W.L.	2.8	198.2
-	3.3	197.7
+	5.4	195.6
Ch	6.8	194.2
+	8.0	193.0
5' west of East Curve	9.2	191.8
-	10.5	190.5
East Line	10.6	190.4

75' N ^o of S ₁			
East L.	201.02	10.5	190.5
-		10.5	190.5
5' west of East Ct.		9.2	191.8
14		7.8	193.2
Ct.		6.8	194.2
4		4.5	196.5
-		3.4	197.6
W.L.		2.5	198.5
100' N ^o of			
W.L.		1.6	199.4
-		3.8	197.2
4		5.0	196.0
Ct.		6.7	194.3
4		7.3	193.7
5' west of East Ct.		8.8	192.2
-		10.9	190.1
W.L.		11.3	189.7

125' N ^o of			
W.L.		12.3	188.7
-		11.5	189.5
5' west of 2 Ct.		9.7	191.3
4		8.1	192.9
Ct.		7.4	193.6
4 5' west of Ct.		6.9	195.1
4		5.0	196.0
-		3.6	197.4
W.L.		2.5	198.5
150' N ^o of			
W.L.		2.0	199.6
-		3.2	197.8
4		5.6	195.4
5' W of Ct.		6.9	194.1
Ct.		8.4	192.6
4		10.0	191.0
-		12.2	188.8
east line		13.3	187.7

175' moor S,

East L,	13.0	188.0
-	12.1	188.9
4	10.6	190.4
ct,	9.3	191.7
5' west of ct,	7.5	193.6
4	6.9	195.0
-	4.2	196.8
W.L.	2.2	198.8

200' moor

W.L.	2.6	198.4
-	4.1	196.9
1/4	6.7	194.3
4' west of ct.	8.1	192.9
ct,	9.8	191.2
4	10.8	190.2
-	17.0	189.0
East line	15.0	187.8

225' moor S,

East L,	12.7	188.3
-	11.7	189.3
4	10.5	190.5
ct,	9.8	191.2
4' west of ct	8.3	192.7
1/4	7.1	193.9
-	4.5	196.5
W.L.	2.8	198.2

250' moor

W.L.	2.6	198.4
-	4.6	196.4
1/4	6.7	194.3
5' west of ct	7.7	193.7
ct,	9.5	191.5
1/4	9.6	191.4
-	11.6	189.4
East line	17.6	188.4

275' met 8		
East L,	201.02	120
-		109
4		96
ct,		90
4' west of ct,		74
1/4		62
-		42
West L		24
(300) So line of "C"		
W.L,		23
-		43
1/4		62
4' west of ct,		74
ct,		90
1/4		91
-		103
West L		116

So Curt line of C,		
East L,		116
-		100
4		87
ct,		86
4' west of ct,		76
1/4		65
-		43
6' East of West line		31
W.L,		22
So 1/4 line of C,		
W.L,		28
6' East of W line		33
cut		47
1/4		64
4' west of ct,		72
ct,		93
1/4		96
ct,		102
East line		118

Center Line of "C"

East Line	11.8	189.2
-	10.8	190.2
4	8.9	192.1
Ch,	8.5	192.5
4' west of Ch,	7.1	193.9
1/4	6.6	194.4
-	4.6	196.4
W.L.,	3.5	197.5
M ^o 1/4 Line of C,		
W.L.	3.8	197.2
4 Ch,	6.0	195.0
1/4	7.2	193.1
Ch.	9.0	192.0
1/4	9.5	191.5
-	10.9	190.1
East Line	17.3	188.7

M^o East Line of C,

East L.	12.3	188.7
-	11.4	189.6
4	9.6	191.4
Ch,	9.4	191.6
4	7.1	193.9
-	6.3	194.7
W.L.,	4.4	196.6
M ^o Line of "C"		
W.L.	5.2	195.8
-	5.9	195.1
4	8.2	192.8
Ch. 1/2 west of Ch,	8.5	192.5
Ch,	9.6	191.4
1/4	9.7	191.3
-	11.5	189.5
East Line	12.4	188.6

25' 11" of "C"			
East L.	201.02	12.9	188.1
-		12.1	188.9
4		10.5	190.5
ct		10.2	190.8
1/4		9.2	191.8
4' west of 1/4 line		8.2	192.8
Ch		7.0	194.0
West line		6.0	195.0
	1.77	195.45	7.34 193.68
50' 11" of "C"			
M.L.		1.2	194.3
-		2.1	193.4
1/4		3.7	191.8
ct		5.1	190.4
1/4		5.8	189.7
-		7.9	187.6
East line		8.9	186.6

75' 11" of "C"			
East L.	195.45	9.9	185.6
-		8.4	187.1
4		7.2	188.3
ct		6.6	188.9
4		5.1	190.4
-		3.1	192.4
M.L.		1.9	193.6
100' 11" of "C"			
M.L.		2.5	193.0
-		3.8	191.7
1/4		5.8	189.7
ct		7.4	188.1
1/4		8.3	187.2
-		9.5	186.0
East L.		11.2	184.3

125' No of C,

East L.	195.45	11.5	184.0
-		10.7	185.3
1/4		9.1	186.4
ct.		8.0	187.5
A		6.4	189.1
-		5.0	190.5
W.L.		3.5	192.0

150' No of C

W.L.		4.4	191.1
-		5.6	189.9
A		7.6	187.9
ct.		8.1	187.4
1/4		9.4	186.1
-		10.6	184.9
East L.		14.0	183.5

175' No of C

East L.		13.6	181.9
-		11.6	183.9
A		9.8	185.7
ct.		8.5	187.0
A		8.2	187.3
-		6.6	188.9
W.L.		5.4	190.1

200' No of C

W.L.		5.9	189.6
-		7.3	188.2
A		7.6	187.9
ct.		8.7	186.6
A		10.6	184.9
-		12.1	183.4
East L.		14.2	181.3

225' N. of C

East L.	120	120	183.5
-	125		183.1
1/4	115		184.0
ct.	101		185.4
A	83		187.2
-	77		188.3
W.L.	60		189.5
250' N. of C.			
W.L.	54		190.1
-	61		189.4
A	74		188.1
ct.	98		185.7
A	106		184.9
-	99		185.6
East Line	89		186.6

275' N. of C"

East L.	6.7	188.8
-	7.6	187.9
A	8.5	187.0
ct.	9.0	186.5
6' west of ct.	7.1	188.4
1/4	4.5	191.0
5' west of 1/4 line	2.0	193.5
ct.	2.6	192.9
W.L.	3.4	192.1
292' N. of C"		
West L.	2.7	193.3
-	1.1	194.4
A	0.0	195.5
ct.	0.0	195.5
1/4	0.8	194.7
ct.	3.9	191.6
East Line	5.3	190.2

30

	1954	1956	20220	161	193.84
(300) Sides of "B"					
W.L.	5.1				197.1
-	5.1				197.1
+	5.9				196.3
ct.	5.5				196.7
+	5.8				196.4
-	5.4				196.8
East Line	5.1				197.1
71° line of "B"					
East Line	4.0				198.2
-	4.2				198.2
11+	4.4				197.6
ct.	4.4				197.8
11+	4.6				197.4
ct.	4.2				198.0
W.L.	4.1				198.1

5' mo of "B"

West L.	7.3	194.9
-	4.7	197.2
+	4.8	197.4
ct.	4.5	197.7
11+	7.0	195.2
ct.	7.6	194.6
East L.	8.2	194.0
50' mo of B		
West Line	5.1	197.1
-	5.2	197.0
+	5.7	196.5
ct.	6.2	196.0
+	6.0	196.2
-	6.0	196.2
East Line	6.0	196.2

75' No of B

East L	202.20	5.2	197.0
-		5.2	197.0
A		5.3	196.9
CX		5.4	196.8
A		5.7	196.5
Cb		5.6	196.6
M.L.		4.7	197.5

100' No of B

M.L.		4.5	198.0
-		4.6	197.6
A		4.4	197.8
CX		4.6	197.6
A		4.7	197.5
-		4.6	197.6
East L		4.5	197.9

125' No of B

East L		2.9	199.3
-		3.3	198.9
A		3.8	198.4
CX		4.1	198.1
A		4.0	198.2
-		4.1	198.1
M.L.		3.6	198.6

150' No of B

M.L.		3.7	199.0
-		3.6	198.6
A		3.6	198.6
CX		3.4	198.8
A		3.3	199.0
-		2.9	199.3
East L		2.7	199.5

175' north B,

East L,	202.20	67	
-		1.3	
A		1.6	
Ch		2.4	
A		2.5	
-		2.6	
W.L,		2.8	
	200' north		
W.L,		2.7	
-		2.1	
A		2.9	
Ch		1.9	
A		1.7	
-		1.8	
East L,		1.2	
728	207.96	1.52	200.68

26th Street,

225' north B,

200.5	East L,	207.96	6.4	201.6
200.9	-		6.9	201.1
200.6	A		6.5	201.5
199.8	Ch		6.4	201.6
199.7	A		6.9	201.1
197.6	-		7.4	200.6
199.4	W.L,		7.4	200.6
		250' north B,		
200.0	W.L,		6.8	201.2
200.1	-		6.4	201.6
200.2	A		6.6	201.4
200.3	Ch		6.5	201.5
200.5	A		6.4	201.6
200.4	-		6.2	201.8
200.8	East L		5.9	202.1

275' moat

East L.	207.96	5.8	202.2
—		5.8	202.2
4		5.9	202.1
4		5.9	202.1
4		5.6	202.4
—		5.7	202.3
West L.		6.3	201.7
(300) So line of "A"			
W.L.		5.6	202.4
—		5.6	202.4
4		5.5	202.5
4		5.2	202.8
—		5.1	202.9
—		5.0	203.0
East L.		5.0	203.0

So East line of A

E L.	4.4	203.6
—	4.5	203.5
4	4.9	203.1
4	4.9	203.1
—	4.9	203.1
—	5.2	202.8
W.L.	5.4	202.6
So 1/4 line of A		
W.L.	5.1	202.9
—	4.8	203.2
4	4.9	203.1
4	4.8	203.2
—	4.1	203.9
—	3.9	204.1
East L.	3.9	204.1

Center line of A

East line	4.2	203.8
-	3.9	204.1
A	4.3	203.7
ct,	4.8	203.2
A	5.0	203.0
-	4.8	203.2
W.L,	4.8	203.2
No 1/4 line		
W.L,	4.8	203.2
-	4.7	203.3
A	4.7	203.3
ct.	4.7	203.3
A	4.6	203.4
-	4.4	203.6
East L	4.1	203.9

No Curt Line of A

East L,	3.8	204.2
-	4.3	203.7
A	4.5	203.5
ct,	4.7	203.3
A	4.7	203.3
-	4.7	203.3
W.L,	4.7	203.3
No line of "A"		
West L.	4.5	203.5
-	4.6	203.4
A	4.5	203.5
ct.	4.5	203.5
A	4.2	203.8
-	3.6	204.4
East L	3.3	204.7

25' N. of A.

East L.	29	205.1
-	31	204.9
A	35	204.5
Cl.	41	203.9
A	44	203.6
-	45	203.5
W.L.	45	203.5
50' N. of A.		
W.L.	48	203.2
-	45	203.5
A	43	203.7
Cl.	41	203.9
A	40	204.0
-	37	204.3
East L.	35	204.5

75' N. of A.

East L.	33	204.7
-	33	204.7
A	41	203.9
Cl.	44	203.6
A	47	203.3
-	49	203.1
W.L.	49	203.1
100' N. of A.		
W.L.	49	203.1
-	49	203.1
A	49	203.1
Cl.	47	203.3
A	45	203.5
-	43	203.7
East L.	41	203.9

36th Street

(108.4' N. of A) So Line of Park,
East L 207.96 4.2 203.6
- 4.4 203.6
4 4.6 203.4
ct, 4.8 203.2
4 5.3 202.7
- 5.5 202.5
W. L, 5.5 202.5
8.08 210.22 0.82 207.14
11.28 203.94

37

26th Street
From F to K.

	H.	
	024	18624
Center Line of "A"		18600
W.L.	5.6	180.6
-	5.3	180.9
4	5.0	181.2
Ch.	3.8	182.4
4	2.7	183.3
-	2.0	184.2
East L.	1.7	184.5
So 1/4 Line of F.		
E.L.	1.6	184.6
-	1.7	184.3
4	3.0	183.2
Ch.	4.1	182.1
4	5.1	181.1
-	5.4	180.8
W.L.	5.1	180.8

~~178~~ 4/29/05
Hitchison
Swamp
Series

38

So Curt Line of F.

West L.	6.6	179.60
-	5.6	180.6
1/4	4.4	181.4
Ch.	4.2	182.0
4	3.4	182.8
-	2.3	184.3
East L.	1.6	184.6
So Line of F.		
East L.	1.7	184.5
-	3.0	183.2
4	3.6	182.6
Ch.	4.9	182.2
4	4.7	181.5
-	5.7	180.5
West L.	6.7	179.5

28

25' South F.		
W.L.	186.2	7.0
-		6.0
A		5.4
Ch.		4.7
A		3.6
-		3.4
East L.		2.3
50' South		
E.L.		2.8
-		3.7
A		4.0
Ch.		4.5
A		5.7
-		6.4
W.L.		7.7
		179.2
		180.2
		180.8
		182.0
		182.6
		182.8
		183.9
		183.4
		182.5
		182.2
		181.7
		180.5
		179.6
		178.5

39

75' South F.		
W.L.		7.9
-		7.0
A		6.5
Ch.		5.2
A		3.9
-		3.5
E.L.		3.1
100' South F.		
E.L.		3.4
-		4.5
A		5.3
Ch.		6.1
A		6.6
-		7.4
W.L.		7.7
		178.3
		179.2
		179.7
		181.0
		182.3
		182.7
		183.1
		182.8
		181.7
		180.9
		180.1
		179.6
		178.8
		178.5

2675

M.L.

125' Soof F.

-

4

4

-

E.L.

E.L.

-

4

4

-

M.L.

186.44 7,7

7,6

7,1

6,4

4,7

4,9

3,9

3,5

5,5

6,1

6,3

6,9

7,7

8,6

178.5

178.6

179.1

180.3

181.5

181.3

182.3

182.7

180.7

180.1

179.9

179.3

179.0

177.6

175' Soof F.

M.L.

-

4

4

-

E.L.

E.L.

-

4

4

-

M.L.

9,2

8,0

7,7

6,3

5,6

5,9

4,9

5,1

6,3

6,4

7,2

8,1

8,6

9,5

177.0

178.2

178.5

179.9

180.2

180.3

181.3

181.2

179.9

179.6

179.0

178.1

177.6

176.7

40

225' Soot F.

West L.	186.24	10.4	175.8
-		9.5	176.7
4		8.8	177.4
Cl.		7.9	178.3
4		7.0	179.2
-		6.1	180.1
East L.		6.2	180.0

250' Soot

E.L.		6.8	179.4
-		7.1	179.1
4		7.6	178.6
Cl.		8.7	177.5
4		8.7	177.5
-		9.5	176.7
W.L.		11.6	174.6

275' Soot

West L.		12.1	174.2
-		10.9	175.3
4		9.4	176.8
Cl.		8.1	178.1
4		8.1	178.1
-		7.2	179.0
East L.		6.1	180.1

(300) 211° line of "L."

East L.		7.6	178.6
-		8.4	177.8
4		8.5	177.7
Cl.		8.6	177.6
4		10.4	175.8
-		11.3	174.9
W.L.		12.4	173.8

No Carb Line of G.

W.L.	18624	12.3	173.9
-		11.5	174.7
4		10.6	175.6
ct		9.8	176.4
4		8.7	177.5
-		8.2	178.0
East Line		6.9	179.3

No 1/4 Line of

East L.		7.6	178.6
-		8.7	177.5
4		8.3	177.9
ct.		9.0	177.2
4		11.3	174.9
-		11.7	174.5
W.L.		13.1	173.1
BM.	532	12.28	173.96

173.1
13.446
on 8470th

Center Line of G

West Line	179.28	7.0	172.3
-		5.7	173.6
4		4.1	175.2
ct.		1.9	177.4
4		1.4	177.9
-		1.5	177.8
East L.		1.3	178.0

So 1/4 Line

East L.		1.6	177.7
-		1.9	177.4
4		3.0	176.3
ct.		3.4	175.9
4		4.8	174.5
-		5.7	173.6
W.L.		7.6	171.7

So curb line

W.L.	179.28	8.2	171.1
-		6.3	173.0
4		5.1	174.2
Cl.		4.9	175.3
4		3.4	175.9
-		1.9	177.4
E.L.		1.1	178.2
So line of "G"			
East L.		1.2	178.1
-		1.3	178.0
4		2.8	176.5
Cl.		4.3	175.0
4		5.3	174.0
-		6.4	172.9
W.L.		8.4	170.9

25' South of G,

W.L.	9.2	170.1
-	8.2	171.1
4	6.1	173.1
Cl.	5.0	174.3
4	3.7	175.4
-	3.3	176.0
East L.	2.8	176.5
50' South		
E.L.	3.1	176.2
-	3.8	175.5
4	4.3	175.0
Cl.	5.5	173.8
4	7.3	172.0
-	9.1	170.2
W.L.	10.1	169.2

75' Soot		
W.L.	108	168.5
-	96	169.7
A	81	171.1
CX	63	173.0
A	49	174.4
-	42	175.1
East L	25	176.8

100' Soot		
E.L.	37	175.6
Cb	47	174.6
HA	58	173.5
CX	70	172.3
A	90	170.3
-	106	168.7
W.L.	116	167.7

125' Soot			
West L	HI 179.28	141	165.2
-		116	167.7
A		96	169.7
CX		81	171.2
A		61	173.2
-		54	173.9
East L		44	174.9

100' Soot			
East L		49	174.4
-		54	173.9
A		67	172.6
CX		90	170.3
A		110	168.3
-		130	166.3
W.L.		144	164.9
736	HI 173.92	1272	166.56

175' Soot

West L	173.2	11.4	162.5
-		9.3	164.6
4		7.1	166.8
Ch		4.8	169.1
4		2.5	171.4
-		1.0	172.9
East L		0.0	173.9

200' Soot

East L		0.0	172.9
-		1.7	172.2
4		4.4	169.5
Ch		6.2	167.7
4		8.7	165.2
-		10.8	163.1
West L		14.8	161.1

225' Soot

West L	13.5	160.6
-	11.8	162.1
4	9.9	164.0
Ch	8.1	165.8
4	5.4	168.5
-	3.5	170.4
East Line	1.7	172.2

250' Soot

East L	2.1	171.8
-	3.9	170.0
4	6.3	167.6
Ch	8.3	165.6
4	10.1	163.8
-	12.6	161.3
West Line	13.8	160.1

275' Soot S,			
West Line		160	157.9
-		13.4	162.5
4		11.4	162.5
ct.		9.7	164.7
4		7.0	166.9
-		4.6	169.3
E.L.		2.8	171.1

(300') No Line of H.			
East L.	173.92	3.6	170.3
-		6.0	167.0
4		7.8	166.1
ct.		10.6	163.3
4	3.17	165.36	11.73 162.19
-		4.7	160.7
-		6.8	158.6
West L.		8.7	156.7

No Curb Line of H.			
East Line	173.92	5.0	168.9
-		7.0	166.9
4		9.2	164.7
ct.		11.6	162.3
4	165.36	6.1	159.3
Sub		7.9	157.5
West Line		9.7	155.7

No 1/4 Line of H.			
West Line	165.36	10.7	154.7
-		8.7	156.7
4		7.1	158.3
ct.	173.92	13.4	160.5
4		10.6	163.3
-		9.3	165.6
East Line		6.3	167.6

Center Line of H.

East Line	173.92	7.6	166.3
-		9.7	164.2
4		11.6	162.3
	HI 165.36		
Center		6.1	159.3
4		8.6	156.8
-		9.9	155.5
West Line		11.4	154.0

So 1/4 Line of H.

West Line	165.36	12.4	153.0
-		10.7	154.7
4		9.3	156.1
Ch.		7.7	157.7
4		4.3	161.1
-		2.0	163.4
East L.		0.6	164.8

So Curb Line of H.

East Line	165.36	2.7	162.7
-		4.0	161.4
4		6.4	159.0
Ch.		8.3	157.1
4		9.4	156.0
-		11.8	153.6
West L.		13.3	152.1

So Line of H.

West Line		15.2	150.2
-		13.3	152.1
4		11.3	154.1
Ch.		9.3	156.1
4		7.6	157.8
-		5.6	159.8
East L.		3.7	161.7

26th

25' Soot H.

East Line	165.36	4.1	161.3
-		6.4	159.0
4		8.6	156.8
Cl.		9.8	155.6
	156.82		
1/4		3.5	153.3
-		5.9	150.9
West Line		7.3	149.5

50' Soot H.

West Line	156.82	8.5	148.3
Cl.		6.3	150.5
1/4		4.4	152.4
	165.36		
Cl.		11.7	153.7
4		9.4	156.0
-		7.6	157.8
East Line		5.5	159.9

48

75' Soot H.

East Line	165.36	6.0	159.4
-		8.4	157.0
4		10.4	155.0
Cl.		12.7	152.7
	156.82		
1/4		6.1	150.7
-		7.7	149.1
West Line		9.8	147.0

100' Soot H.

West Line	156.82	10.1	146.7
-		8.2	148.4
4		6.5	150.3
	165.36		
Cl.		13.2	152.2
4		10.8	154.6
-		9.1	156.3
East Line		7.2	158.2

125' Soot H,			
East Lm	16536	8.1	157.3
Ch		9.6	155.8
+		12.0	153.4
	3.41	156.82	11.95
			153.41
ct.		5.7	151.1
+		7.3	149.5
-		8.6	148.2
West Lm		10.5	146.3
150' Soot H,			
West L		11.1	145.7
-		9.2	147.6
+		8.2	148.2
ct.		6.5	150.3
+		3.5	153.3
-		1.9	154.9
East L		0.4	156.4

175' Soot H,			
East L,	15682	0.7	156.1
-		2.9	153.9
+		4.7	152.1
ct.		6.4	150.4
+		8.2	148.6
-		10.1	146.7
West L		11.7	145.1
200' Soot			
West L		12.8	144.0
-		11.0	145.8
+		9.0	147.8
ct.		6.3	150.5
+		5.1	151.7
-		3.0	153.8
East L		1.0	155.8

26th Street

225' 50 of

East L.	156.82	2.6	154.2
-		5.0	151.0
1/4		6.4	150.4
ct.		8.0	148.0
4		10.5	146.3
-		12.8	144.0
West Line		14.6	142.2

250' 50 of

West Line		15.5	141.3
-		13.9	142.9
4		12.7	144.6
ct.		10.1	146.7
4		8.4	148.4
-		5.9	150.9
East L.		3.9	152.9

275' 50 of 41

East L.	156.82	5.1	151.7
-		7.4	149.4
4		9.7	147.1
ct.		11.5	145.3
	148.60		
1/4		4.8	143.8
-		6.5	142.1
West Line		8.1	140.5

(300) M^s Line of I₁

West L.	148.60	8.3	140.3
-		6.6	142.0
1/4		4.6	144.0
	156.82		
ct.		11.7	145.1
4		10.8	146.0
-		8.7	148.1
East Line		6.1	150.7

No. East Line of I,			
East L	156.82	6.8	150.0
-		8.1	148.7
A		10.7	146.1
Ch.		13.1	143.7
	148.60		
1/4		6.3	142.3
-		7.3	141.3
West L		8.5	140.1
No. 1/4 Line of I,			
West L	148.60	8.9	139.7
-		7.6	141.0
1/4		6.4	142.2
	156.82		
Center		14.9	143.9
A		10.0	146.8
-		9.6	148.2
East L		7.6	149.2

Center Line of I,			
East L	156.82	8.8	148.0
-		9.7	147.1
A		10.4	146.4
Ch.		12.3	144.5
	3.00	148.60	11.22
			145.60
1/4		6.0	142.6
-		7.1	141.5
West L		8.7	139.9
So 1/4 Line of I,			
West L	148.60	8.9	139.7
-		7.1	141.5
1/4		5.8	142.8
Ch.		4.4	144.2
1/4		3.0	145.6
-		2.0	146.6
East L		0.0	148.6

So. Curt Line of I,

East Line	152.54	2.7	149.8
Curb	148.60	1.1	147.5
1/4		3.0	145.6
Ct.		4.9	143.7
4		6.8	141.8
-		8.3	140.3
West L		9.4	139.2

So Line of I,

West Line	148.60	9.1	139.5
-		7.8	140.8
4		6.5	142.0
Ct.		5.0	143.6
	<u>152.54</u>		
4		6.6	145.9
-		4.0	148.5
West L		7.7	149.8

25' Soot I,

East Line	152.54	2.5	150.0
-		4.0	148.5
1/4		5.0	147.5
	<u>148.60</u>		
Ct.		2.9	145.7
4		5.5	143.0
-		7.2	141.4
West Line		8.5	140.1

50' Soot I,

West L		8.1	140.5
-		7.0	141.6
1/4		5.2	143.4
Ct.		3.9	144.7
	7.80	152.54	3.86
			144.74
1/4		5.5	147.0
-		3.6	148.9
East Line		1.5	151.0

75' South I.

East L.	152.54	0.5	152.0
-		3.1	149.4
4		5.0	147.5
Ch.		7.3	145.2
4		8.7	143.8
-		10.1	142.4
West L.		11.1	141.4

100' South I.

W. L.		10.2	142.3
-		9.7	142.6
4		8.6	143.9
Ch.		6.3	146.2
4		5.0	147.5
-		4.0	148.5
East L.		1.3	151.2

125' South I.

East L.		3.0	149.5
-		4.5	148.0
4		5.5	147.4
Ch.		6.0	146.5
4		7.9	144.6
-		10.3	142.2
W. L.		11.3	141.2

150' South I.

West Lm		11.1	141.4
-		9.8	142.7
4		7.5	145.0
Ch.		6.4	146.1
4		5.8	146.7
-		4.9	147.6
East L.		7.3	150.2

36th Street

175' Soof I,

East L,	152.54	1.8	150.7
-		4.5	148.0
4		6.3	146.2
Ct.		6.9	145.6
4		8.5	144.0
-		10.1	142.4
West Line		11.6	140.9

200' Soof I,

West Line		11.8	140.7
-		10.7	141.8
4		9.2	143.3
Ct.		7.1	145.4
4		5.7	146.8
-		4.6	147.9
East L,		2.8	149.7

54

225' Soof

East L,		2.9	149.6
-		4.4	148.1
4		6.0	146.5
Ct.		6.8	145.7
4		9.3	143.2
-		11.4	141.1
West L,		12.3	140.2

250' Soof

W, L,		12.7	139.8
-		11.6	140.9
4		10.1	142.4
Ct.		8.1	144.4
4		6.8	145.7
-		5.8	146.7
East Line		4.3	148.2

275' East

East Line	152.5	147.5
-	7.0	145.5
A	8.0	144.5
Ch	9.0	143.5
A	11.0	141.5
-	12.6	139.9
West Line	13.4	139.1
(300) No line at J		
West L	15.2	137.3
-	14.4	138.1
A	13.1	139.4
Ch	11.1	141.4
A	9.2	143.3
-	8.0	144.5
East L	6.5	146.0

4.09 145.84 10.79 141.75

No. East line at J

East L	145.84	1.2	144.6
-		2.6	143.2
A		4.1	141.7
Ch		6.0	139.8
A		7.7	138.1
-		8.9	136.9
W. L.		9.7	136.1

No. 1/4 line at J

West Line	10.9	134.9
Ch	9.6	136.2
1/4	8.6	137.2
Ch	7.4	138.4
A	5.5	140.3
-	3.7	142.1
East L	7.6	143.2

Center line of J		
East line	145.84	3.8
-		4.4
A		6.7
Ch		8.4
A		9.5
-		10.7
West line		12.0
So 1/4 line		
West L		12.8
-		11.6
A		10.6
Ch		9.6
A		8.5
-		6.4
East L		5.0

142.0
141.4
139.1
137.4
136.3
135.1
133.8
133.0
134.2
135.2
136.2
137.3
139.4
140.8

So Cent line of J		
East L	6.1	139.7
-		7.8
A		9.4
Ch		10.5
A		11.7
-		12.5
West L		13.4
So line of J		
W L		14.3
-		13.3
A		12.7
Ch		11.6
A		10.7
-		9.6
East L		7.8
1.08	137.17	9.75
		136.99

138.0
136.4
135.3
134.1
133.2
132.4
131.5
132.5
133.1
134.2
135.1
136.2
138.0

25' Soot J		
East L.	137.17	1.7
-		.33
A		4.7
ct		5.6
A		6.2
-		7.3
West L.		8.4
50' Soot		
W L.		10.9
-		10.2
A		9.4
ct		8.6
A		7.6
-		6.6
East L.		5.4

135.5
133.9
132.5
131.6
131.0
129.9
128.8
126.3
127.0
128.8
128.6
129.6
130.6
131.8

75' Soot J		
East L.	137.17	8.5
-		9.8
A		10.4
ct		11.7
A		12.5
-		13.7
West L.		14.1
0.94	125.83	12.28
124.89		
100' Soot J		
West L.		4.8
-		4.7
A		4.1
ct		3.4
A		2.8
-		2.0
East L.		1.3

128.7
127.4
126.8
126.0
124.7
124.0
123.1
121.0
121.1
121.7
122.4
123.0
123.8
124.5

125' Soot J

East L.	125.83	4.7	121.1
-		5.4	120.4
A		6.4	119.4
CX		7.7	118.6
A		7.9	117.9
-		8.4	117.4
W.L.		9.1	116.7

100' Soot J

West L.		10.2	112.6
-		12.6	113.2
A		12.3	113.5
CX		11.8	114.0
A		11.7	114.6
-		10.4	115.4
East L.		9.6	116.2

0.57 114.33 12.07 113.76

175' Soot J

East L.	114.33	2.9	111.4
-		3.8	110.5
A		4.6	109.7
CX		5.4	108.9
A		5.8	108.5
-		5.7	108.6
West L.		5.7	108.6

200' Soot

W.L.		9.5	104.8
-		9.4	104.9
A		10.0	104.3
CX		9.5	104.8
A		9.1	105.2
-		8.8	105.5
East L.		7.6	106.7

26th Street

225' South J			
East L.	114.83	110	103.3
-		12.7	102.1
A		12.4	101.9
Ch		13.2	101.1
A		13.5	100.8
-		13.9	100.4
2' East of West L		13.7	100.6
West Line		12.8	101.5

0.65 102.76 12.22 102.11			
250' South J			
West line		5.0	97.8
-		5.3	97.5
A		5.1	97.7
Ch		4.8	98.0
A		4.7	98.6
-		4.2	98.6
East line		7.9	100.0

275' South J			
East line	102.76	4.7	98.1
2' West of East L		6.6	96.2
-		7.1	95.7
A		7.4	95.4
Ch		8.1	94.7
A		8.1	94.7
-		8.6	94.2
West line		8.4	94.4

(300) 110° Line of K.			
West line		12.5	90.3
-		12.2	90.6
117		11.6	91.2
Ch		11.0	91.8
114		10.2	92.6
-		10.2	92.6
West of East line		9.6	93.2
East line		7.4	95.4

Gas Pipe Irving Ave

60

sto

10276

2,10

94,22

10,64

92,12

.6,48

87,74

Gas Pipe - Irving Ave.

61

Sta	Rod	Ground	Grade	±
EL 24 th			<u>68.60</u>	
+50			68.79	
1	6.70	69.83	68.97	+0.86
+50	9.80	66.73	67.16	-2.4
2	10.40	66.13	69.35	-3.2
+50	9.50	67.03	69.54	-2.5
3	8.50	68.03	69.72	-1.7
+50	7.00	69.53	69.91	-0.4
4	5.60	70.93	<u>70.10</u>	+0.8
+50	4.10	72.43	72.60	-0.2
5	2.00	74.53	75.10	-0.6
+50	10.90	77.57	77.60	-0.03
GWL 25 th	8.30	80.17	<u>80.10</u>	+0.07

521

76.53

71.32

12.77

88.47

0.83

75.70

Sta	Rad	Ground	Grade	±
EL. W th	5.20	83.27	<u>81.10</u>	+2.17
+50	3.20	85.27	81.57	+3.70 ✓
1	2.16	86.31	82.03	+4.28 ✓
+50	1.80	86.67	82.50	+4.17 ✓
2	1.70	86.77	82.97	+3.80 ✓
+50	1.90	86.57	83.43	+3.14 ✓
3	1.50	86.97	<u>83.90</u>	+3.07 ✓
+50	0.30	88.17	83.98	+4.19 ✓
4	0.90	87.57	84.07	+3.50 ✓
+50	1.80	86.67	84.10	+2.52 ✓
5	1.40	87.07	84.23	+2.84 ✓
+50	2.40	88.13	84.32	+3.81 ✓
6-W.L. 26 th	2.80	87.73	<u>84.4</u>	+3.3 ✓

HI.
88.47

3.43 90.53 1.37

87.10

Sta	Rad	Ground	Grade	±
E.L. 26 th	3.10	87.43	<u>84.4</u>	+3.0 ✓
+50	4.00	86.53	83.57	+2.96 ✓
1	4.70	85.83	82.73	+3.10 ✓
+50	5.30	85.23	81.90	+3.33 ✓
2	6.50	84.03	81.07	+3.0 ✓
+50	5.66	84.87	80.23	+4.6 ✓
3	6.80	83.73	79.40	+4.3 ✓
+50	8.20	82.33	78.57	+3.8 ✓
4	8.80	81.73	77.73	+4.0 ✓
+50	10.90	79.63	76.90	+2.7 ✓
5	4.10	77.40	76.07	+1.3 ✓
+50	4.90	76.60	75.23	+1.4 ✓
G.W.L. 27 th	5.50	76.00	<u>74.4</u>	+1.6 ✓

H.I.
90.53

63

3.47

81.50

12.50

78.03

Sta	Rod	Ground	Grade	±
E. L. 27 th	5.90	75.60	74.4	+1.2
+50	5.00	76.50	74.15	+2.4
1	5.30	76.20	73.91	+2.3 ✓
+50	5.30	76.20	73.66	+2.5 ✓
2	5.20	76.20	73.42	+2.9 ✓
+50	5.60	75.90	73.17	+2.7 ✓
3	6.40	75.10	72.93	+2.2 ✓
+50	6.20	75.30	72.68	+2.6 ✓
4	6.00	75.50	72.44	+3.1 ✓
+50	6.20	75.30	72.19	+3.1 ✓
6710-11h 28 th	6.60	74.90	71.90	+3.0 ✓

81.50

1.04

75.88

6.66

74.84

Chk B.M. 288 Logan

10.71

65.16 ✓

40 Gas Pipe 22nd St

Sta	Rod	Ground	Grade	±
0-N.L. Kearney	45.86	46.26	43.1	+3.2
+50	5.27		42.89	+3.9
1			42.68	✓
+50			42.47	✓
2			42.27	✓
+50			42.06	✓
3-S.L. Julian			41.85	✓

245

52.72

49.67

42.68	✓
9.44	
42.47	✓
9.65	✓
42.27	✓
9.85	✓
42.06	
10.06	
41.85	✓
10.27	

	200' W =	E line Albatross St	
S 2		11.2	189.9
bb		11.0	190.3
+6		13.8	187.4
1/4		11.7	189.5
b		11.3	189.9
1/4		11.5	189.7
bb ⁺¹²		12.2	187.9
		12.3	188.9
N 2		12.5	188.7
TP	0.75	191.29	1066 190.52
TP	0.63	187.25	9.19 182.10
		W line of Albatross St	
N 2		4.8	177.9
bb		4.1	178.6
+3		5.0	177.7
bb		5.0	177.7
+6		6.5	176.2
b		4.4	178.3
+8		5.0	176.7
1/4		4.0	177.7
bb		3.7	179.0
S 2		4.3	178.4

	50'	SW of Albatross	
TP	1.65	<u>173.56</u>	10.82 171.91
S 2		4.4	169.2
bb		4.1	169.5
1/4		3.8	169.8
+6		6.5	168.1
b		3.4	170.2
+10		5.5	168.1
1/4		3.2	170.8
bb		2.9	171.2
N 2		2.0	171.6
		100' W of Albatross St	
N 2		6.8	166.8
bb		7.6	166.0
1/4		7.7	165.9
b		8.2	165.4
1/4		8.8	164.8
bb		10.8	162.8
S 2		10.6	163.0

125' W of Albatross			
SL		13.0	160.6
bl		11.0	162.6
1/4		10.2	163.4
+4		12.3	161.1
+5		10.5	163.1
1/4		11.9	161.7
		9.2	164.3
bl		8.9	164.7
SL		8.2	165.3
TP	0.54	165.74	8.36
o		165.20	
150' W of Albatross			
SL		2.1	163.6
bl		2.9	162.8
1/4		3.4	162.3
b		4.4	161.3
+2		6.1	159.6
+8		5.2	160.4
+10		6.9	158.8
1/4		5.2	160.5
bl		5.7	160.0
SL		7.0	158.7

185' W of Albatross			
SL		9.8	155.9
+12		9.3	156.4
bl		11.8	153.9
+3		9.0	156.7
186' W of Albatross			
SL		11.7	154.0
bl		11.8	153.9
+3		9.1	156.6
198'			
SL		12.1	153.6
+8		12.0	153.7
bl		9.5	156.2

POSTED

16574

200' W of Albatross = ~~B-d~~ Brent

S ₂	11.3	154.4
leb	9.8	155.9
1/4	9.2	156.5
b	9.0	156.7
1/4	8.2	157.5
leb	6.9	158.8
rd	6.2	159.5

69

71

72

57

73

67

74

75

76

67

79

82

83

25th + D 188,34 SW, Cor. of Hwy
" + C 191,46 " " 1 Spk in Elect Marsh
" + A 203,93 NE, " Westing. of Hwy

16 th/₁₁
 2 H 35.82 S.E. Spk in Paly
 " I 31.47 N.E. " " "
 " J 29.785 " " " " "
 M 28.915 " " " " "
 L 24.67 " " " " "
 N 17.478 " " " " "
 N 14.003 S.E. Cor Top of Iron Post

Front & Lateral
 209.59 S.E. Cor. Top of Post S.E. Cor.

TRAVERSE TABLE FOR TRANSIT BOOK.

From 1° to 90° for a distance of 100.

Degrees.	DEGREES.		¼ DEGREE.		½ DEGREE.		¾ DEGREE.		Degrees.
	Lat.	Dep.	Lat.	Dep.	Lat.	Dep.	Lat.	Dep.	
0			100.00	0.44	100.00	0.87	99.99	1.31	89
1	99.98	1.75	99.98	2.18	99.97	2.62	99.95	3.05	88
2	99.94	3.49	99.92	3.93	99.91	4.36	99.88	4.80	87
3	99.86	5.23	99.84	5.67	99.81	6.10	99.79	6.54	86
4	99.76	6.98	99.73	7.41	99.69	7.85	99.66	8.28	85
5	99.62	8.72	99.58	9.15	99.54	9.58	99.50	10.02	84
6	99.45	10.45	99.41	10.89	99.36	11.32	99.31	11.75	83
7	99.25	12.19	99.20	12.62	99.14	13.05	99.09	13.49	82
8	99.03	13.92	98.97	14.35	98.90	14.78	98.84	15.21	81
9	98.77	15.64	98.70	16.07	98.63	16.50	98.56	16.93	80
10	98.48	17.36	98.40	17.79	98.33	18.22	98.25	18.65	79
11	98.16	19.08	98.08	19.51	97.99	19.94	97.90	20.36	78
12	97.81	20.79	97.72	21.22	97.63	21.64	97.53	22.07	77
13	97.44	22.50	97.34	22.92	97.24	23.34	97.13	23.77	76
14	97.03	24.19	96.92	24.62	96.81	25.04	96.70	25.46	75
15	96.59	25.88	96.48	26.30	96.36	26.72	96.25	27.14	74
16	96.13	27.56	96.00	27.98	95.88	28.40	95.76	28.82	73
17	95.63	29.24	95.50	29.65	95.37	30.07	95.24	30.49	72
18	95.11	30.90	94.97	31.32	94.83	31.73	94.69	32.14	71
19	94.55	32.56	94.41	32.97	94.26	33.38	94.12	33.79	70
20	93.97	34.20	93.82	34.61	93.67	35.02	93.51	35.43	69
21	93.36	35.84	93.20	36.24	93.04	36.65	92.88	37.06	68
22	92.72	37.46	92.55	37.86	92.39	38.27	92.22	38.67	67
23	92.05	39.07	91.88	39.47	91.71	39.87	91.53	40.27	66
24	91.35	40.67	91.18	41.07	91.00	41.47	90.81	41.87	65
25	90.63	42.26	90.45	42.66	90.26	43.05	90.07	43.44	64
26	89.88	43.84	89.69	44.23	89.49	44.62	89.30	45.01	63
27	89.10	45.40	88.90	45.79	88.70	46.17	88.50	46.56	62
28	88.29	46.95	88.09	47.33	87.88	47.72	87.67	48.10	61
29	87.46	48.48	87.25	48.86	87.04	49.24	86.82	49.62	60
30	86.60	50.00	86.38	50.38	86.16	50.75	85.94	51.13	59
31	85.72	51.50	85.49	51.88	85.26	52.25	85.04	52.62	58
32	84.80	52.99	84.57	53.36	84.34	53.73	84.10	54.10	57
33	83.87	54.46	83.63	54.83	83.39	55.19	83.15	55.56	56
34	82.90	55.92	82.66	56.28	82.41	56.64	82.16	57.00	55
35	81.92	57.36	81.66	57.71	81.41	58.07	81.16	58.42	54
36	80.90	58.78	80.64	59.13	80.39	59.48	80.13	59.83	53
37	79.86	60.18	79.60	60.53	79.34	60.88	79.07	61.22	52
38	78.80	61.57	78.53	61.91	78.26	62.25	77.99	62.59	51
39	77.71	62.93	77.44	63.27	77.16	63.61	76.88	63.94	50
40	76.60	64.28	76.32	64.61	76.04	64.94	75.76	65.28	49
41	75.47	65.61	75.18	65.93	74.90	66.26	74.61	66.59	48
42	74.31	66.91	74.02	67.24	73.73	67.56	73.43	67.88	47
43	73.14	68.20	72.84	68.52	72.54	68.84	72.24	69.15	46
44	71.93	69.47	71.63	69.78	71.33	70.09	71.02	70.40	45
45	70.71	70.71							
Degrees.	Dep.	Lat.	Dep.	Lat.	Dep.	Lat.	Dep.	Lat.	Degrees.
	DEGREES.		¼ DEGREE.		½ DEGREE.		¾ DEGREE.		

Published by H. S. CROCKER COMPANY, Stationers, Drawing Materials,
 Mathematical Instruments, etc., San Francisco.