

INTEL[®] NUC PRODUCT CATALOG

January 2020

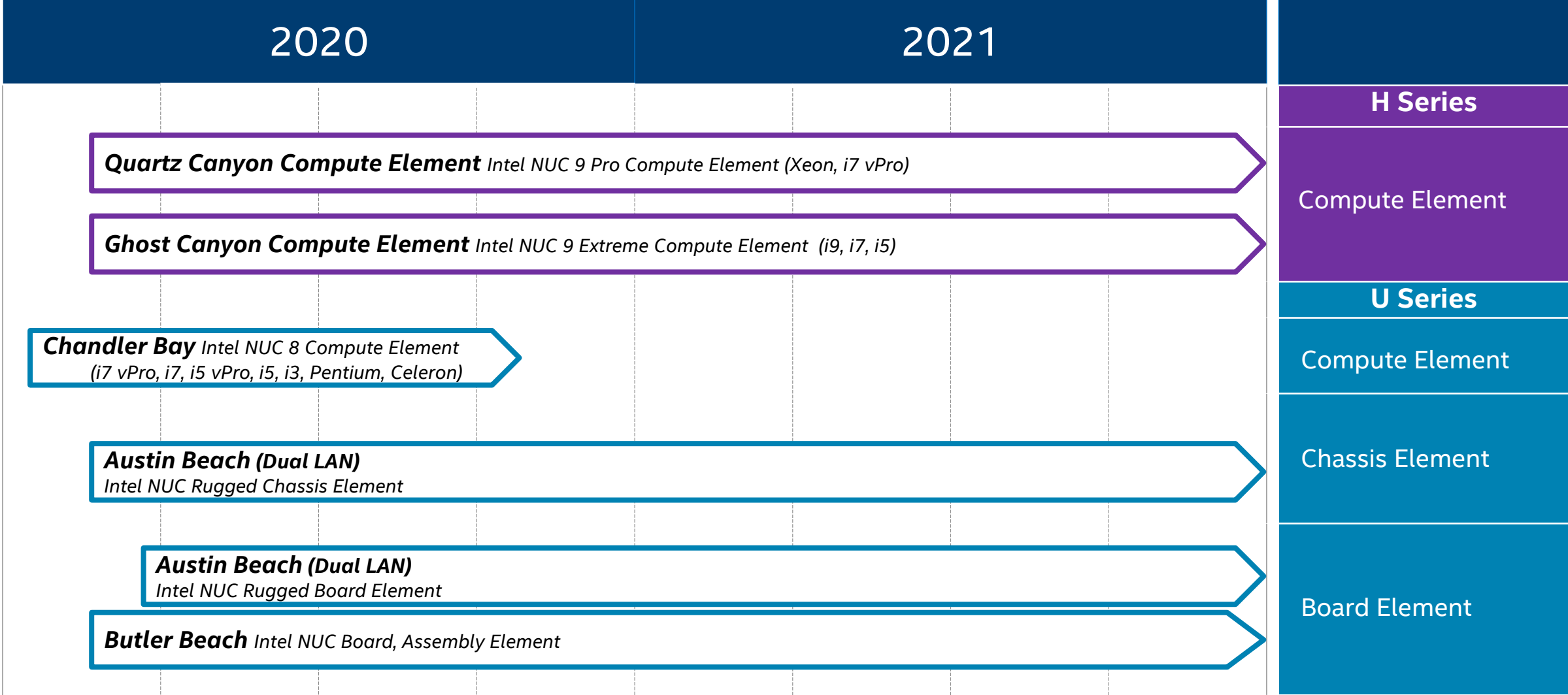
All information provided here is subject to change without notice. Contact your Intel representative to obtain the latest Intel product specifications and roadmaps.

* Other names & brands may be claimed as the property of others.

INTEL® NUC ELEMENTS



INTEL® NUC ELEMENT ROADMAP

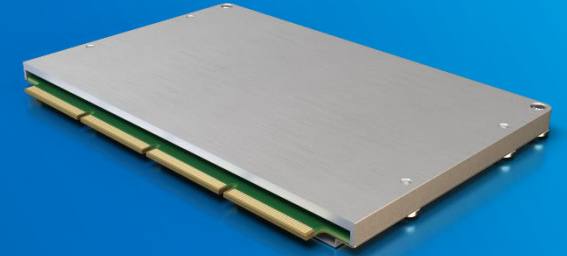


INTEL® NUC ELEMENTS

The Next Evolution of Modular Computing

A Pluggable System-On-Module for U-series CPU Usages

- With Increased Performance
 - Expanded I/O Options
- Significantly Reduced Host System Costs
 - 3 Year Product Life Cycle
 - 3 Year Warranty



Target Usage Scenarios

Smart Screens
(Digital Signage, Kiosks)

Interactive Devices
(Integrated Compute)

Modular Compute
(AIO, Laptops, Mini PCs)



INTEL® NUC 9 EXTREME COMPUTE ELEMENT (H-SERIES)

“Ghost Canyon” Compute Element



9th Generation Intel® Core™ i9-9980HK (NUC9i9QN)

2.40 GHz – 5.00 GHz Turbo, 8 core, 16 thread, 16MB Cache, 45W
Intel® UHD Graphics 630, 350 MHz – 1.25 GHz



9th Generation Intel® Core™ i7-9750H (NUC9i7QN)

2.60 GHz – 4.50 GHz Turbo, 6 core, 12 thread, 12 MB Cache, 45W
Intel® UHD Graphics 630, 350 MHz – 1.15 GHz



9th Generation Intel® Core™ i5-9300H (NUC9i5QN)

2.40 GHz – 4.10 GHz Turbo, 4 core, 8 thread, 8 MB Cache, 45W
Intel® UHD Graphics 630, 350 MHz – 1.05 MHz

- Dual channel DDR4 SODIMMs, 1.2V, max 64GB @ 2400MHz or 32GB @ 2666MHz
- 2x M.2 key M slots: 42/80 + 42/80/110 PCH-attached PCIe x4 Gen3 NVMe / AHCI or SATA3 SSD, RAID-0 and RAID-1 capable
- Intel® Optane™ SSD and Intel® Optane™ Memory M10 and H10 ready
- HDMI 2.0a connector
- 2x Thunderbolt™ 3 ports
- Supports 3x 4K displays (Intel® UHD Graphics)
- 2x Intel® 10/100/1000 Mbps (i219-LM and i210-AT) Ethernet ports
- Intel® Wi-Fi 6 AX200 2.4Gbps + Bluetooth v5, dual internal antennas
- 4x USB 3.1 Gen2 Type-A connectors
- Up to 7.1 multichannel digital audio via HDMI or DisplayPort signals
- 3.5mm rear speaker / TOSLINK combo jack
- Internal Front Panel Audio, CEC, 2x USB 3.1 headers, 2x USB 2.0 headers
- 202 x 131 x 39 mm
- Microsoft Windows* 10 logo'd, compatible with Windows Server 2019
- Individual retail packaging
- **Three-year Warranty**



Available SKUs
 Mini PC Kit Chassis Compute Element
SKU details and ordering codes on next page

INTEL® NUC 9 EXTREME COMPUTE ELEMENT (H-SERIES)

“Ghost Canyon” Compute Element

Ghost Canyon Compute Element Ordering Codes		
Product Code	MM#	Processor
BXNUC9i9QNB	999RRD	9 th Gen i9-9980HK
BXNUC9i7QNB	999RRF	9 th Gen i7-9750H
BXNUC9i5QNB	999RRK	9 th Gen i5-9300H

INTEL® NUC 9 PRO COMPUTE ELEMENT (H-SERIES)

“Quartz Canyon” Compute Element



Intel® Xeon® E-2286M Processor (NUC9VXQN)
2.4 GHz – 5.0 GHz Turbo, 8 Core, 16 thread, 16MB Cache, 45W
Intel® UHD Graphics P630, 350 MHz - 1250 MHz
Intel® vPro™ Technology, Intel® AMT



9th Generation Intel® Core™ i7-9850H (NUC9V7QN)
2.6 GHz – 4.6 GHz Turbo, 6 Core, 12 thread, 12MB Cache, 45W
Intel® UHD Graphics 630, 350 MHz - 1150 MHz
Intel® vPro™ Technology, Intel® AMT



- **Dual channel DDR4 SODIMMs**, 1.2V, max 64GB @ 2400MHz or 32GB @ 2666MHz, ECC Memory Support (Xeon only)
- **2x M.2 key M slots**: 42/80 + 42/80/110 PCH-attached PCIe x4 Gen3 NVMe / AHCI or SATA3 SSD, **RAID-0 and RAID-1 capable**
- **Intel® Optane™ SSD and Intel® Optane™ Memory M10 and H10 ready**
- **TPM 2.0**
- Runtime BIOS Resilience with Dynamic Attestation
- **HDMI 2.0a** connector
- **2x Thunderbolt™ 3** ports
- **Supports 3x 4K displays** (Intel® UHD Graphics)
- **2x Intel® 10/100/1000 Mbps (i219-LM and i210-AT) Ethernet ports**
- **Intel® Wi-Fi 6 AX200** 2.4Gbps, WiAMT + **Bluetooth v5**, dual internal antennas
- **4x USB 3.1 Gen2** Type-A connectors
- Up to 7.1 multichannel digital audio via HDMI or DisplayPort signals
- 3.5mm rear speaker / TOSLINK combo jack
- Internal Front Panel Audio, CEC, 2x USB 3.1 headers, 2x USB 2.0 headers
- 202 x 131 x 39 mm
- Microsoft Windows* 10 logo'd, compatible with Windows Server 2019
- Individual retail packaging
- **Three-year Warranty**

Available SKUs
 Mini PC Kit Chassis Compute Element
SKU details and ordering codes on next page

INTEL® NUC 9 PRO COMPUTE ELEMENT (H-SERIES)

“Quartz Canyon” Compute Element

Quartz Compute Element Ordering Codes

Product Code	MM#	Processor
BKNUC9VXQNB	999LX2	Xeon® E-2286M
BKNUC9V7QNB	999LX3	9 th Gen i7-9850H

INTEL® NUC 8 COMPUTE ELEMENT (U-SERIES)

“Chandler Bay”



8th Generation Intel® Core™ i7-8665U (CM8v7CB)

1.9 GHz – 4.8 GHz Turbo, 4 Core, 8 Thread, 8MB Cache, **15W**
Intel® vPro™ Technology, Intel® AMT, TPM 2.0
Intel® UHD Graphics 620, 300 MHz - 1150 MHz



8th Generation Intel® Core™ i7-8565U (CM8i7CB)

1.8 GHz – 4.6 GHz Turbo, 4 Core, 8 Thread, 8MB Cache, **15W**
Intel® UHD Graphics 620, 300 MHz - 1150 MHz



8th Generation Intel® Core™ i5-8365U (CM8v5CB)

1.6 GHz – 4.1 GHz Turbo, 4 Core, 8 Thread, 6MB Cache, **15W**
Intel® vPro™ Technology, Intel® AMT, TPM 2.0
Intel® UHD Graphics 620, 300 MHz - 1100 MHz



8th Generation Intel® Core™ i5-8265U (CM8i5CB)

1.6 GHz – 3.9 GHz Turbo, 4 Core, 8 Thread, 6MB Cache, **15W**
Intel® UHD Graphics 620, 300 MHz - 1100 MHz



8th Generation Intel® Core™ i3-8145U (CM8i3CB)

2.1 GHz – 3.9 GHz Turbo, 2 Core, 4 Thread, 4MB Cache, **15W**
Intel® UHD Graphics 620, 300 MHz - 1000 MHz



Intel® Pentium® Gold 5405U (CM8PCB)

2.3 GHz, 2 Core, 4 Thread, 2MB Cache, **15W**
Intel® UHD Graphics 610, 300 MHz - 950 MHz



Intel® Celeron® 4305U (CM8CCB)

2.2 GHz, 2 Core, 2 Thread, 2MB Cache, **15W**
Intel® UHD Graphics 610, 300 MHz - 900 MHz



Family Features

- Intel® Wireless-AC 9560 soldered-down, 802.11ac 2x2 1.73Mbps + Bluetooth® 5
- **4 to 8GB** soldered-down, dual-channel Memory
- **Select SKUs with 64GB** eMMC Storage
- Windows 10 & Linux operating systems supported
- I/O supported by the card-edge consolidated connector:
 - 4 USB 3.1
 - 3 USB 2.0
 - 2 x DDI (configurable as DP/HDMI)
 - 1 x eDP
 - 1 x GbE PHY
 - 1 x PCIe x4/SATA
 - 1 x PCIe x4
 - 1 x PCIe x1
 - 1 x HD Audio
 - eSPI (EC interface)
- Support for up to triple 4k@60Hz displays (dual DDI plus eDP interfaces)
- Generation agnostic heat-spreader thermal interface
- Supports integration into both stationary and mobile system designs
- Module dimensions: **95 x 65 x 6 mm**
- No moving parts
- **Qualified for 24x7 operation**
- **Three Year Product Life Cycle**
- **Three Year Warranty**

Available SKUs

w/ RAM

w/ RAM & Storage

SKU details and ordering codes on next page

INTEL® NUC 8 COMPUTE ELEMENT (U-SERIES)

“Chandler Bay” Compute Element

Chandler Bay Compute Element Ordering Codes				
Product Code	MM#	Processor	RAM	Storage
BKCM8v7CB8N	999MCK	8th Gen vPro i7-8665U	8GB LPDDR3	None
BKCM8i7CB8N	999MCL	8th Gen i7-8565U	8GB LPDDR3	None
BKCM8v5CB8N	999M05	8th Gen vPro i5-8365U	8GB LPDDR3	None
BKCM8i5CB8N	999M06	8th Gen i5-8265U	8GB LPDDR3	None
BKCM8i3CB4N	999M07	8th Gen i3-8145U	4GB LPDDR3	None
BKCM8PCB4R	999M08	Pentium Gold 5405U	4GB LPDDR3	64GB eMMC
BKCM8CCB4R	999M09	Celeron 4305U	4GB LPDDR3	64GB eMMC

INTEL® NUC RUGGED CHASSIS ELEMENT (U-SERIES)

“Austin Beach” Chassis Element

Support for Intel® NUC Compute Element

All [Chandler Bay](#) Compute Elements are supported in Austin Beach (Core i7 vPro, Core i7, Core i5 vPro, Core i5, Core i3, Pentium, Celeron)



Dual LAN (CMCR1ABB) backpanel

Family Features

- Requires Intel® NUC Compute Element
- Fanless, dust-resistant chassis with I/O board installed; preliminary IP50 rating
- Dual M.2 22x80 key M slots for PCIe x4 NVMe and SATA SSDs
- Two HDMI 2.0a, with built-in CEC for all ports; 4-lane eDP
 - CMCR1ABB: support for dual 4k@60Hz via HDMI 2.0a
- Intel® Optane™ Memory H10 with Solid State Storage ready
- Intel® i219-LM 10/100/1000 Mbps RJ45 Ethernet; 2nd Intel® i211-AT GbE LAN
- 1x front and 2x rear USB 3.1 gen 2 type A ports, 1x internal USB 3.0 header
- 1x front port and 2x backpanel USB 2.0 ports
- 2x RS232 serial port headers
- Up to 7.1 multichannel (or dual 8-channel) digital audio via HDMI
- Front panel header (with Vcc5/1A, 5Vsby2A, 3.3Vsby1A)
- Qualified for 24x7 operation; delayed AC start; DC overvoltage protection
- EDID emulation (headless display, 2nd virtual display, persistent displays)
- New Watchdog Timer monitors and restarts unresponsive applications or OS
- 12 – 24V_{DC} rear jack, internal 2x2 power connector
- Metal chassis, Kensington lock with base security
 - 0~40degC external ambient operating temperature
 - 19V_{DC} 90W power supply adapter with geo-specific AC cords (IEC C5 connector)
 - VESA mounting plate included, with mechanical support for power supply adapter
 - External dipole antennas
 - Chassis dimensions: 254 x 152.4 x 36 mm (plus additional 4.8mm of rubber feet height)
- Board dimensions: 170 x 136.4 mm
- Microsoft Windows* 10, Windows 10 IOT Enterprise, compatible with various Linux distros
- Individual brown-box packaging; **Three Year Product Life Cycle; Three Year Warranty**

Available SKUs

Mini PC Kit Chassis Board
SKU details and ordering codes on next page

This device has not been authorized as required by the rules of the Federal Communications Commission. This device is not, and may not be, offered for sale or lease, or sold or leased, until authorization is obtained.

INTEL® NUC RUGGED CHASSIS ELEMENT (U-SERIES)

“Austin Beach” Chassis Element

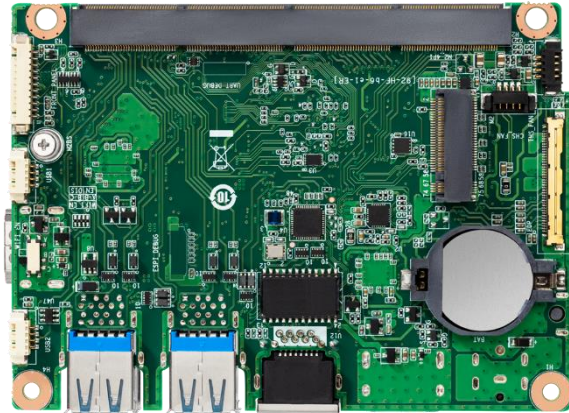
Austin Beach Chassis/Board Ordering Codes		
Product Code	MM#	Description
BKCMCR1ABB	999M96	Rugged Chassis: “Dual LAN” w/no cord
BKCMCR1ABB1	999M97	Rugged Chassis: “Dual LAN” w/US cord
BKCMCR1ABB2	999M98	Rugged Chassis: “Dual LAN” w/EU cord
BKCMB1ABB	999M8F	Carrier Board: “Dual LAN”

INTEL® NUC BOARD/ASSEMBLY ELEMENT (U-SERIES)

“Butler Beach” Board/Assembly Element

Support for Intel® NUC Compute Element

All [Chandler Bay](#) Compute Elements are supported in Butler Beach
(Core i7 vPro, Core i7, Core i5 vPro, Core i5, Core i3, Pentium, Celeron)



Board Element



Assembly: Carrier Board with Thermal Solution

Family Features

- **Requires Intel® NUC Compute Element**
- The receiving connector supports the following Intel® NUC Compute Elements:
 - CM8v7CB8N with Intel® Core™ i7 vPro™
 - CM8i7CB8N with Intel® Core™ i7
 - CM8v5CB8N with Intel® Core™ i5 vPro™
 - CM8i5CB8N with Intel® Core™ i5
 - CM8i3CB4N with Intel® Core™ i3
 - CM8PCB4R with Intel® Pentium® Gold
 - CM8CCB4R with Intel® Celeron®
 - Also compatible with future generations of Intel® NUC Compute Elements
- Included carrier board connectors:
 - 4 USB 3.1 type A
 - 2 USB 2.0 internal headers
 - 1 front panel control internal header
 - 2 HDMI 2.0a (1 external, 1 internal)
 - 1 eDP internal header
 - 1 RJ-45 10/100/1000 Mbps Ethernet w/ dual LEDs
 - 1 m.2 22x80 PCIe x4 w/ SATA slot
 - 1 PWM internal fan header
 - DC power input external jack
 - DC power input internal 4-pin header
- Support for up to triple 4k@60Hz displays (dual HDMI 2.0a plus eDP connectors)
- Board dimensions: 110mm x 80mm
- Full assembly dimensions: 117mm x 147 mm x 25mm
- **Qualified for 24x7 operation**
- **Three Year Product Life Cycle**
- **Three Year Warranty**

Available SKUs



Assembly



I/O Board

SKU details and ordering codes on next page

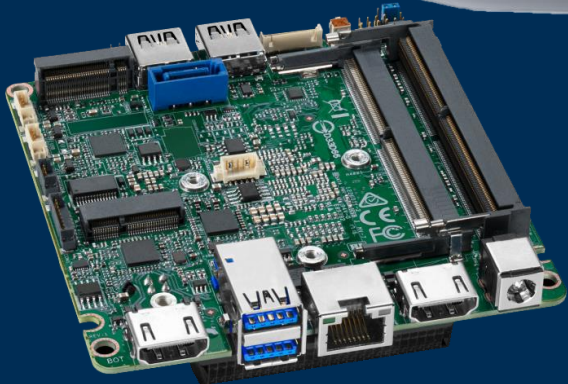
INTEL® NUC BOARD/ASSEMBLY ELEMENT (U-SERIES)

“Butler Beach” Board/Assembly Element

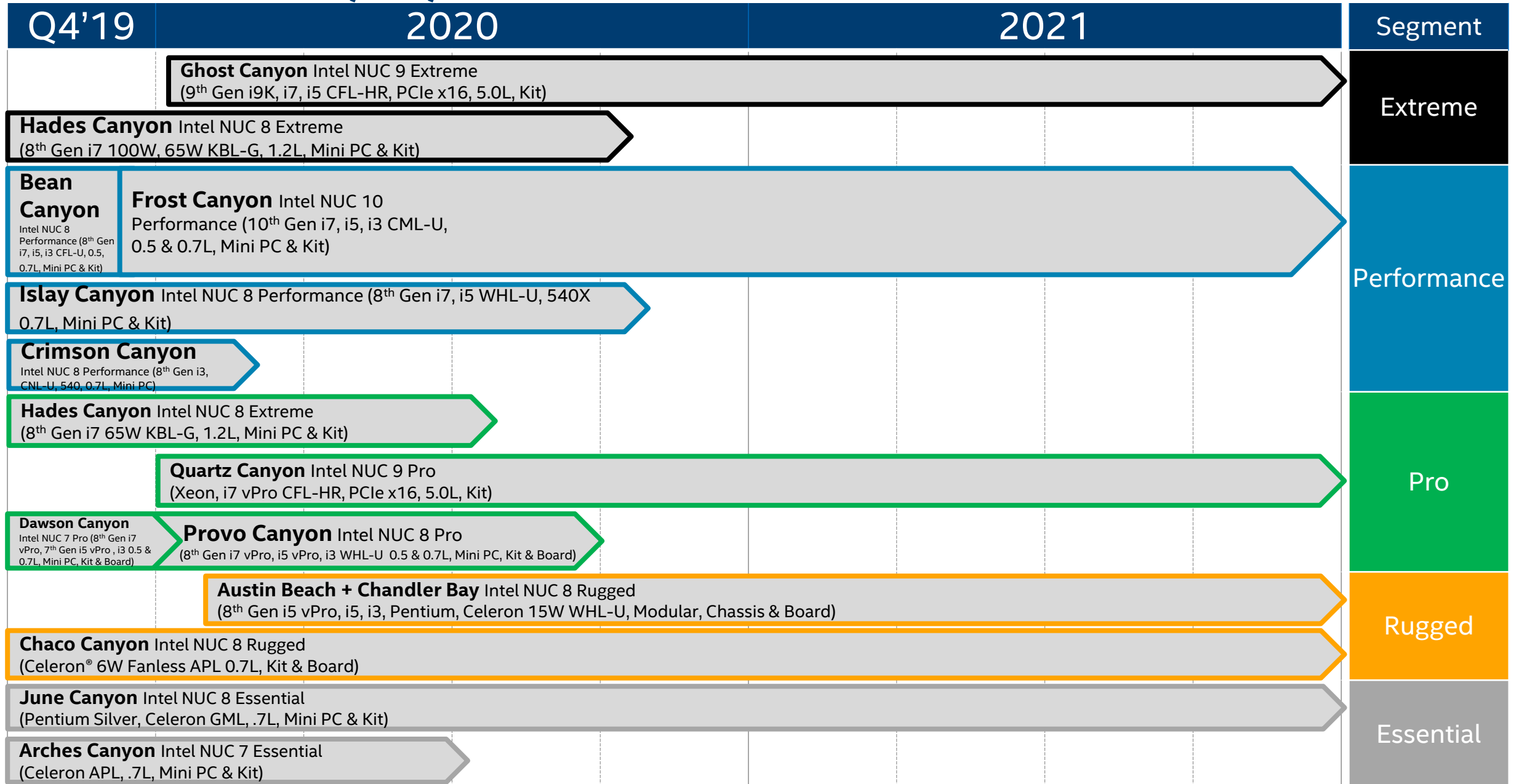
Butler Beach Board/Assembly Ordering Codes

Product Code	MM#	Description
BKCMB1BB	999M8T	Carrier Board only
BKCMA1BB	999M9G	Carrier Board with Thermal Solution

INTEL® NUC MINI PCS, KITS, BOARDS



INTEL® NUC MINI PC, KIT, BOARD ROADMAP



INTEL® NUC EXTREME

DISCRETE GRAPHICS IN A MINI PC

- ✓ Intel® Core™ i9K/i7/i5 processors
- ✓ Supports 8" desktop dual-wide graphics cards*
- ✓ Integrated discrete graphics processors*
- ✓ Triple M.2 SSD support*
- ✓ Upgradeable Compute Element board*
- ✓ Uncompromised performance

**Varies by product*



TARGET USAGE SCENARIOS

Virtual Reality

Gaming

Creator

Products

Generation	Code Name	Mini PC	Kit
9 th Gen	Ghost Canyon		X
8 th Gen	Hades Canyon	X	X



INTEL® NUC 9 EXTREME

“Ghost Canyon”



9th Generation Intel® Core™ i9-9980HK (NUC9i9QN)
2.40 GHz – 5.00 GHz Turbo, 8 core, 16 thread, 16MB Cache, 45W
Intel® UHD Graphics 630, 350 MHz – 1.25 GHz



9th Generation Intel® Core™ i7-9750H (NUC9i7QN)
2.60 GHz – 4.50 GHz Turbo, 6 core, 12 thread, 12 MB Cache, 45W
Intel® UHD Graphics 630, 350 MHz – 1.15 GHz



9th Generation Intel® Core™ i5-9300H (NUC9i5QN)
2.40 GHz – 4.10 GHz Turbo, 4 core, 8 thread, 8 MB Cache, 45W
Intel® UHD Graphics 630, 350 MHz – 1.05 GHz



- A** Pre-installed Ghost Canyon Compute Element:
 - **Dual channel DDR4 SODIMMs**, 1.2V, max 64GB @ 2400MHz or 32GB @ 2666MHz
 - **2x M.2 key M slots**: 42/80 + 42/80/110 PCH-attached PCIe x4 Gen3 NVMe / AHCI or SATA3 SSD, **RAID-0 and RAID-1 capable**
 - **Intel® Optane™ SSD and Intel® Optane™ Memory M10 and H10 ready**
 - **HDMI 2.0a** connector
 - **2x Thunderbolt™ 3** ports
 - **Supports 3x 4K displays** (Intel® UHD Graphics)
 - **2x Intel® 10/100/1000 Mbps (i219-LM and i210-AT) Ethernet ports**
 - **Intel® Wi-Fi 6 AX200 2.4Gbps + Bluetooth v5**, dual internal antennas
 - **4x USB 3.1 Gen2 Type-A** connectors
 - Up to 7.1 multichannel digital audio via HDMI or DisplayPort signals
 - 3.5mm rear speaker / TOSLINK combo jack
 - Internal Front Panel Audio, CEC, 2x USB 3.1 headers, 2x USB 2.0 headers
- **Ghost Canyon chassis:**
- B**
 - **PCIe X16 slot** with 6+2-pin & 6-pin PCIe power connectors, up to 225W, up to 8” card length, dual-slot capable
- C**
 - **PCIe X4 slot**
 - **CPU-attached M.2 slot** 42/80/110 PCIe X4 Gen 3, **Intel® Optane™ SSD ready**
 - **SDXC slot with UHS-II** support
 - **2x USB 3.1 Gen2 Type-A** (front), **1x USB 2.0 Type-A** (internal) connectors
 - 3.5mm front stereo headset jack
 - Plastic with metal inner frame, Kensington lock with panel security
 - **238 x 216 x 96 mm (5.0 L)**
 - **500W internal power supply** with geo-specific C13 AC cords
- Microsoft Windows* 10 logo, compatible w/ Windows Server 2019; compatible w/ various Linux distros
- Individual retail packaging
- **Three-year Warranty**

Available SKUs
 Mini PC Kit Chassis Compute Element **A**
SKU details and ordering codes on next page

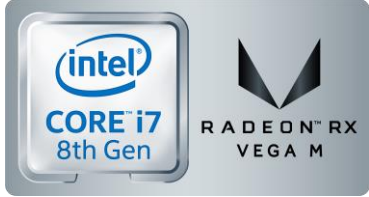
INTEL® NUC 9 EXTREME

“Ghost Canyon”

Kit Ordering Codes			
Product Code	MM#	AC Cord (C13)	Processor
Ghost Canyon Kit – NUC9i9QNX			
BXNUC9i9QNX	999DNT	None	9 th Generation Core™ i9-9980HK
BXNUC9i9QNX1	999DNV	US	
BXNUC9i9QNX2	999DNX	EU	
BXNUC9i9QNX3	999DNZ	UK	
BXNUC9i9QNX4	999DP0	AU	
BXNUC9i9QNX6	999DP1	CN	
Ghost Canyon Kit – NUC9i7QNX			
BXNUC9i7QNX	999DP4	None	9 th Generation Core™ i7-9750H
BXNUC9i7QNX1	999DP5	US	
BXNUC9i7QNX2	999DP6	EU	
BXNUC9i7QNX3	999DP7	UK	
BXNUC9i7QNX4	999DP8	AU	
BXNUC9i7QNX6	999DP9	CN	
Ghost Canyon Kit – NUC9i5QNX			
BXNUC9i5QNX	999DPA	None	9 th Generation Core™ i5-9300H
BXNUC9i5QNX1	999DPC	US	
BXNUC9i5QNX2	999DPD	EU	
BXNUC9i5QNX3	999DPF	UK	
BXNUC9i5QNX4	999DPG	AU	
BXNUC9i5QNX6	999DPH	CN	

Compute Element Ordering Codes		
Product Code	MM#	Processor
Ghost Canyon Compute Element – NUC9i9QNB		
BXNUC9i9QNB	999RRD	9 th Generation Core™ i9-9980HK
Ghost Canyon Compute Element – NUC9i7QNB		
BXNUC9i7QNB	999RRF	9 th Generation Core™ i7-9750H
Ghost Canyon Compute Element – NUC9i5QNB		
BXNUC9i5QNB	999RRK	9 th Generation Core™ i5-9300H

INTEL® NUC 8 EXTREME



8th Generation Intel® Core™ i7-8809G
3.1 GHz - 4.2 GHz Turbo, 4 core, 8 thread, 8MB Cache, **100W**
Radeon™ RX Vega M GH graphics, 1063 MHz – 1190 MHz
Unlocked and VR-capable

8th Generation Intel® Core™ i7-8705G
3.1 GHz - 4.1 GHz Turbo, 4 core, 8 thread, 8MB Cache, **65W**
Radeon™ RX Vega M GL graphics, 931 MHz – 1011 MHz



“Hades Canyon”

- **Dual channel DDR4-2400+ SODIMMs**, 1.2V, 32GB maximum
- **2x M.2 22x42/80 key M** slots for PCIe x4 Gen3 NVMe / AHCI or SATA3 SSD, **RAID-0 and RAID-1 capable**
- **Front and rear HDMI 2.0b** connectors
- **2x Mini DisplayPort 1.2** ports
- **2x Thunderbolt™ 3** ports
- **Supports up to 6x 4K displays**
- **Supports Radeon™ FreeSync™ Technology**
- **2x Intel® 10/100/1000 Mbps (i219-LM and i210-AT) Ethernet ports**
- **Intel® Wireless-AC 8265** M.2 22x30 card, IEEE Wi-Fi 5 2x2 + **Bluetooth v4.2**, internal antennas
- Front **USB 3.1 Gen2** via **USB-C™** and front **USB type-A** connectors
- Front charging USB 3.0, 4x rear USB 3.0, 2x internal USB 3.0 and 2x USB 2.0 via headers
- Front Consumer Infrared port
- SDXC slot with UHS-I support
- Up to 7.1 multichannel digital audio via HDMI or DisplayPort signals
- 3.5mm front stereo headset jack, 3.5mm rear speaker / TOSLINK combo jack
- **Beam-forming, far-field, quad-mic array**
- Plastic with metal inner frame, replaceable lid, Kensington lock with base security
- **221 x 142 x 39 mm (1.2 L)**
- 19V_{DC} 230W power supply with geo-specific AC cords
- Common I/O header with Front Panel, CEC, 2x USB 3.0, 2x USB2.0 signals
- **Replaceable lid with customizable RGB LED illumination and front panel status RGB LEDs**
- Microsoft Windows* 10 logo'd, compatible with Windows Server 2016
- VESA mounting plate included
- Individual retail packaging
- **Three-year Warranty**

Available SKUs

Mini PC Kit Chassis Board
SKU details and ordering codes on next page

INTEL® NUC 8 EXTREME

“Hades Canyon”

Mini PC Ordering Codes						
Product Code	MM#	AC Cord	Processor	RAM	Storage	OS
Hades Canyon 100W 1TB Mini PC – NUC8i7HVKVA						
BOXNUC8i7HVKVA	980546	None	8 th Generation Core™ i7-8809G	16GB (2x 8GB)	1TB NVMe SSD	Win10 Home
BOXNUC8i7HVKVA1	980547	US				
BOXNUC8i7HVKVA2	980548	EU				
BOXNUC8i7HVKVA3	980549	UK				
BOXNUC8i7HVKVA4	980550	AU				
BOXNUC8i7HVKVA6	983334	CN				
Hades Canyon 65W 512GB Mini PC – NUC8i7HNKQC						
BOXNUC8i7HNKQC	980551	None	8 th Generation Core™ i7-8705G	16GB (2x 8GB)	512GB NVMe SSD	Win10 Pro
BOXNUC8i7HNKQC1	980552	US				
BOXNUC8i7HNKQC2	980553	EU				
BOXNUC8i7HNKQC3	980554	UK				
BOXNUC8i7HNKQC4	980555	AU				

Kit Ordering Codes			
Product Code	MM#	AC Cord	Processor
Hades Canyon 100W Kit – NUC8i7HVK			
BOXNUC8i7HVK	961303	None	8 th Generation Core™ i7-8809G
BOXNUC8i7HVK1	961304	US	
BOXNUC8i7HVK2	961305	EU	
BOXNUC8i7HVK3	961306	UK	
BOXNUC8i7HVK4	961307	AU	
BOXNUC8i7HVK6	961309	CN	
Hades Canyon 65W Kit – NUC8i7HNK			
BOXNUC8i7HNK	961316	None	8 th Generation Core™ i7-8705G
BOXNUC8i7HNK1	961317	US	
BOXNUC8i7HNK2	961318	EU	
BOXNUC8i7HNK3	961319	UK	
BOXNUC8i7HNK4	961712	AU	

INTEL® NUC PERFORMANCE

A CUSTOMIZABLE MINI PC WITH THE POWER OF A DESKTOP PC

- ✓ Intel® Core™ i7, i5, i3 processors
- ✓ 5th, 6th, 7th, 8th and 10th Gen options
- ✓ Up to Quadruple Display Support*
- ✓ Space saving from 0.35L to 0.7L
- ✓ Windows® 10 Home preinstalled*
- ✓ Up to 8K display support*
- ✓ Intel® Optane™ memory supported or preinstalled*

**Varies by product*



Products

Generation	Code Name	Mini PC	Kit
10 th Gen	Frost Canyon	X	X
8 th Gen	Islay Canyon	X	X
8 th Gen	Crimson Canyon	X	X
8 th Gen	Bean Canyon	X	X
7 th Gen	Baby Canyon	X	X
6 th Gen	Skull Canyon		X
5 th Gen	Rock Canyon	X	X

Target Usage Scenarios

Home Office

Home Theater PC

Casual Gaming



INTEL® NUC 10 PERFORMANCE

“Frost Canyon”



10th Generation Intel® Core™ i7-10710U (NUC10i7FN)
1.1 GHz – 4.7 GHz Turbo, **6 core, 12 thread**, 12MB Cache, **25W**
Intel® UHD Graphics, 300 MHz – 1.15 GHz



10th Generation Intel® Core™ i5-10210U (NUC10i5FN)
1.6 GHz – 4.2 GHz Turbo, 4 core, 8 thread, 6MB Cache, **25W**
Intel® UHD Graphics, 300 MHz – 1.1 GHz



10th Generation Intel® Core™ i3-10110U (NUC10i3FN)
2.1 GHz – 4.1 GHz Turbo, 2 core, 4 thread, 4MB Cache, **25W**
Intel® UHD Graphics, 300 MHz – 1.0 GHz



- **Dual channel DDR4-2666 SODIMMs**, 1.2V, **64GB** maximum
- **M.2 22x42/80 key M** slot for PCIe x4 Gen3 NVMe / AHCI or SATA3 SSD
- **Intel® Optane™ Memory M10 and H10 ready**
- **HDMI 2.0a** port and **DisplayPort 1.2** via **Thunderbolt™ 3 / USB-C™** port
- **Supports 3x 4K displays**
- **Intel® i219-V** 10/100/1000 Mbps Ethernet
- **Intel® Wi-Fi 6 AX200** 2x2 160MHz channels + **Bluetooth v5**, internal antennas
- Front **USB 3.1 Gen2** Type-C™ (**5V/9V** fast phone charging profiles) and type-A ports
- 2x rear **USB 3.1 Gen2**, and 2x internal USB 2.0 via header
- Front Consumer Infrared port
- **SDXC slot** with **UHS-II** support
- Up to 7.1 multichannel digital audio via HDMI or DisplayPort signals
- 3.5mm front stereo headset jack
- **Beam-forming, far-field, quad-mic array**
- Plastic with metal inner frame, replaceable lid, Kensington lock with base security
- "Tall" H chassis: 117 x 112 x 51 mm, w/ **2.5" 7mm SATA3 bay and port**
- "Slim" K chassis: 117 x 112 x 38 mm
- 12 – 19V_{DC} input range, 19V_{DC} **120W** (Core™ i7 only) or **90W** power supply with geo-specific C5 AC cords
- Front Panel, CEC, RGB LED, 2x USB2.0 headers
- Front panel status RGB LED
- Microsoft Windows* 10 logo'd, compatible with various Linux distros
- VESA mounting plate included in kit SKUs only
- Individual retail packaging
- **Three-year Warranty**

Available SKUs

Mini PC Kit Chassis Board

INTEL® NUC 10 PERFORMANCE

“Frost Canyon”

Frost Canyon Mini PC and L9 Kit Ordering Codes							
Processor	Product Code	MM#	AC Cord (C5)	RAM	Storage	OS	Chassis
10 th Generation Core™ i7-10710U	BXNUC10i7FNHAA1	999MAA	US	16GB	256GB NVMe SSD, 1TB HDD	Win10 Home	Tall
	BXNUC10i7FNHJA	999MA5	No Cord	8GB	16GB Optane™, 1TB HDD	Win10 Home	
	BXNUC10i7FNHJA1	999MA7	US	8GB	16GB Optane™, 1TB HDD	Win10 Home	
	BXNUC10i7FNHJA2	999MA4	EU	8GB	16GB Optane™, 1TB HDD	Win10 Home	
	BXNUC10i7FNHJA3	999MA6	UK	8GB	16GB Optane™, 1TB HDD	Win10 Home	
	BXNUC10i7FNHJA4	999MA8	AU	8GB	16GB Optane™, 1TB HDD	Win10 Home	
	BXNUC10i7FNHC6	999MA9	CN	8GB	256GB NVMe SSD, 1TB HDD	None	Slim
	BXNUC10i7FNKPA2	999MAC	EU	8GB	256GB NVMe SSD	Win10 Home	
	BXNUC10i7FNKP6	999MAD	CN	8GB	256GB NVMe SSD	None	
10 th Generation Core™ i5-10210U	BXNUC10i5FNHJ	999MAF	No Cord	8GB	16GB Optane™, 1TB HDD	None	Tall
	BXNUC10i5FNHCA1	999MAH	US	8GB	256GB NVMe SSD, 1TB HDD	Win10 Home	
	BXNUC10i5FNHJA	999MAJ	No Cord	8GB	16GB Optane™, 1TB HDD	Win10 Home	
	BXNUC10i5FNHJA1	999MAK	US	8GB	16GB Optane™, 1TB HDD	Win10 Home	
	BXNUC10i5FNHJA2	999MAL	EU	8GB	16GB Optane™, 1TB HDD	Win10 Home	
	BXNUC10i5FNHJA3	999MAM	UK	8GB	16GB Optane™, 1TB HDD	Win10 Home	
	BXNUC10i5FNHJA4	999MAT	AU	8GB	16GB Optane™, 1TB HDD	Win10 Home	Slim
	BXNUC10i5FNHF6	999MAG	CN	4GB	16GB Optane™, 1TB HDD	None	
	BXNUC10i5FNKPA2	999MAV	EU	8GB	256GB NVMe SSD	Win10 Home	
	BXNUC10i5FNKPA3	999MAW	UK	8GB	256GB NVMe SSD	Win10 Home	
BXNUC10i5FNKP6	999MAX	CN	8GB	256GB NVMe SSD	None		
10 th Generation Core™ i3-10110U	BXNUC10i3FNHJA1	999MC1	US	8GB	16GB Optane™, 1TB HDD	Win10 Home	Tall
	BXNUC10i3FNHFA	999MC2	No Cord	4GB	16GB Optane™, 1TB HDD	Win10 Home	
	BXNUC10i3FNHFA2	999MC3	EU	4GB	16GB Optane™, 1TB HDD	Win10 Home	
	BXNUC10i3FNHFA3	999MC4	UK	4GB	16GB Optane™, 1TB HDD	Win10 Home	
	BXNUC10i3FNHFA4	999MC5	AU	4GB	16GB Optane™, 1TB HDD	Win10 Home	
	BXNUC10i3FNHF6	999MC0	CN	4GB	16GB Optane™, 1TB HDD	None	

Frost Canyon L6 Kit Ordering Codes				
Processor	Product Code	MM#	AC Cord (C5)	Chassis
10 th Generation Core™ i7-10710U	BXNUC10i7FNH	999JG4	No Cord	Tall
	BXNUC10i7FNH1	999JJV	US	
	BXNUC10i7FNH2	999JV2	EU	
	BXNUC10i7FNH3	999JVW	UK	
	BXNUC10i7FNH4	999JWG	AU	
	BXNUC10i7FNH6	999KCZ	CN	
	BXNUC10i7FNK1	999LRN	US	Slim
	BXNUC10i7FNK2	999LRR	EU	
10 th Generation Core™ i5-10210U	BXNUC10i5FNH	999LRW	No Cord	Tall
	BXNUC10i5FNH1	999LRX	US	
	BXNUC10i5FNH2	999LRZ	EU	
	BXNUC10i5FNH3	999LT0	UK	
	BXNUC10i5FNH4	999LT3	AU	
	BXNUC10i5FNH6	999LT4	CN	
	BXNUC10i5FNK	999LT5	No Cord	Slim
	BXNUC10i5FNK1	999LT6	US	
	BXNUC10i5FNK2	999LT7	EU	
	BXNUC10i5FNK3	999LT8	UK	
BXNUC10i5FNK4	999LT9	AU		
10 th Generation Core™ i3-10110U	BXNUC10i3FNH	999LTA	No Cord	Tall
	BXNUC10i3FNH1	999LTC	US	
	BXNUC10i3FNH2	999LTD	EU	
	BXNUC10i3FNH3	999LTF	UK	
	BXNUC10i3FNH4	999LTG	AU	
	BXNUC10i3FNH6	999LTJ	CN	
	BXNUC10i3FNK	999LTL	No Cord	Slim
	BXNUC10i3FNK1	999LTM	US	
	BXNUC10i3FNK2	999LTN	EU	
	BXNUC10i3FNK3	999LTP	UK	
BXNUC10i3FNK4	999LTR	AU		

INTEL® NUC 8 PERFORMANCE

“Islay Canyon”



8th Gen Intel® Core™ i7-8565U

1.8 GHz - 4.6 GHz Turbo, 4 core, 8 thread, 8MB Cache, 15W



8th Gen Intel® Core™ i5-8265U

1.6 GHz – 3.9 GHz Turbo, 4 core, 8 thread, 6MB Cache, 15W

R A D E O N

5 4 0 X



- **AMD Radeon™ 540X discrete graphics**, 2GB GDDR5 graphics memory
- **Dual-Channel 8GB LPDDR3** soldered down
- **HDMI 2.0b** and **Mini DisplayPort 1.4** ports
- **Supports 3x 4K displays**
- **Supports Radeon™ FreeSync™ Technology**
- **Intel® i219-V** 10/100/1000 Mbps Ethernet
- **Intel® Wireless-AC 9560** soldered-down, IEEE 802.11ac 2x2 + **Bluetooth v5**, internal antennas
- Front **USB 3.1 Gen2** type-A and Type-C™ ports, 2x rear **USB 3.1 Gen2**, and 2x internal USB 2.0 via header
- **Intel® Optane™ Memory M10, M15, and H10 ready**
- M.2 22x42/80 key M slot for PCIe x4 Gen3 NVMe / AHCI or SATA3 SSD (Optane™ Memory or SSD pre-installed in some SKUs)
- 2.5" SATA3 bay and port (1TB HDD pre-installed in some SKUs)
- Front Consumer Infrared port
- SDXC slot with UHS-I support
- Up to 7.1 multichannel digital audio via HDMI or DisplayPort signals
- 3.5mm front stereo headset jack
- Plastic with metal inner frame, replaceable lid, Kensington lock with base security
- 117 x 112 x 51 mm
- 12 – 19V_{DC} input range, 19V_{DC} **90W** power supply with geo-specific AC cords
- Front Panel, CEC, 2x USB2.0 headers
- Front panel status RGB LED
- Microsoft Windows* 10 logo'd, compatible with various Linux distros
- VESA mounting plate included in kit SKUs only
- Individual retail packaging
- **Three-year Warranty**

Available SKUs

Mini PC Kit Chassis Board

SKU details and ordering codes on next page

INTEL® NUC 8 PERFORMANCE

“Islay Canyon”

Islay Canyon Mini PC Ordering Codes

Product Code	MM#	AC Cord	Processor	RAM	Storage	OS
Islay Canyon i7 Optane™ HDD Mini PC – NUC8i7INHJA						
BXNUC8i7INHJA1	999F9L	US	8 th Generation Core™ i7-8565U	8GB	1TB HDD + 16GB Optane	Win10 Home
BXNUC8i7INHJA2	999FA4	EU				
BXNUC8i7INHJA3	999FA5	UK				
BXNUC8i7INHJA4	999FA6	AU				
Islay Canyon i7 SSD Mini PC – NUC8i7INHPA						
BXNUC8i7INHPA1	999FA8	US	8 th Generation Core™ i7-8565U	8GB	256GB SSD	Win10 Home
BXNUC8i7INHPA2	999FA9	EU				
Islay Canyon i5 Optane™ HDD Mini PC – NUC8i5INHJA						
BXNUC8i5INHJA1	999AHL	US	8 th Generation Core™ i5-8265U	8GB	1TB HDD + 16GB Optane™	Win10 Home
BXNUC8i5INHJA2	999AHM	EU				
BXNUC8i5INHJA3	999AHN	UK				
BXNUC8i5INHJA4	999AHP	AU				
Islay Canyon i5 SSD Mini PC – NUC8i5INHPA						
BXNUC8i5INHPA1	999F50	US	8 th Generation Core™ i5-8265U	8GB	256GB SSD	Win10 Home
BXNUC8i5INHPA2	999F4Z	EU				

Islay Canyon Kit Ordering Codes

Product Code	MM#	AC Cord	Processor	RAM	Storage	OS
Islay Canyon i7 L9 Kit – NUC8i7INHZ/P						
BXNUC8i7INHZ6	999FAA	CN	8 th Generation Core™ i7-8565U	8GB	128GB SSD and 1TB HDD	None
BXNUC8i7INHP6	999FAC	CN		8GB	256GB SSD	
Islay Canyon i7 L7 Kit – NUC8i7INHX						
BXNUC8i7INHX	999F9J	No cord	8 th Generation Core™ i7-8565U	8GB	None	None
Islay Canyon i5 L9 Kit – NUC8i5INHP						
BXNUC8i5INHP6	999F4J	CN	8 th Generation Core™ i5-8265U	8GB	256GB SSD	None
Islay Canyon i5 L7 Kit – NUC8i5INHX						
BXNUC8i5INHX	999F51	No Cord	8 th Generation Core™ i5-8265U	8GB	None	None

INTEL® NUC 8 PERFORMANCE

“Crimson Canyon”



8th Generation Intel® Core™ i3-8121U

2.2 GHz - 3.2 GHz Turbo, 2 core, 4 thread, 4MB Cache, 15W



- **AMD Radeon™ 540X discrete graphics**, 2GB GDDR5 graphics memory
- **Dual-Channel 8GB or 4GB LPDDR4** soldered down
- **2x HDMI 2.0b** ports
- **Supports 2x 4K displays**
- **Supports Radeon™ FreeSync™ Technology**
- **Intel® i219-V** 10/100/1000 Mbps Ethernet
- **Intel® Wireless-AC 9560 soldered-down**, IEEE Wi-Fi 5 2x2 + **Bluetooth v5**, internal antennas
- **2x front USB 3.1** (one charging), **2x rear USB 3.1**, and 2x internal USB 2.0 via header
- **Intel® Optane™ Memory M10, and M15 ready**
- M.2 22x42/80 key M slot for PCIe x4 Gen3 NVMe / AHCI or SATA3 SSD (Optane™ Memory pre-installed in some SKUs)
- 2.5" SATA3 bay and port (1TB HDD pre-installed in some SKUs)
- Front Consumer Infrared port
- SDXC slot with UHS-I support
- Up to 7.1 multichannel digital audio via HDMI signals
- 3.5mm front stereo headset jack
- Plastic with metal inner frame, replaceable lid, Kensington lock with base security
- 117 x 112 x 52 mm
- 19V_{DC} input range, 19V_{DC} **90W** power supply with geo-specific AC cords
- Front Panel, CEC, 2x USB2.0 internal headers
- Microsoft Windows* 10 logo'd, compatible with various Linux distros
- VESA mounting plate included
- Individual retail packaging
- **Three-year Warranty**



Available SKUs

Mini PC Kit Chassis Board

SKU details and ordering codes on next page

INTEL® NUC 8 PERFORMANCE

“Crimson Canyon”

Crimson Canyon Mini PC Ordering Codes

Product Code	MM#	AC Cord	RAM	Optane™ Module	HDD	OS
Crimson Canyon i3 8GB HDD Mini PC – NUC8i3CYSM						
BOXNUC8i3CYHJA	999M2D	None	8GB	16GB	1TB	Win10 Home
BOXNUC8i3CYHJA1	999M2F	US				
BOXNUC8i3CYHJA2	999LAA	EU				
BOXNUC8i3CYSM	961388	None		None		
BOXNUC8i3CYSM1	961389	US				
BOXNUC8i3CYSM2	961390	EU				
BOXNUC8i3CYSM3	961391	UK				
BOXNUC8i3CYSM4	961392	AU				
BOXNUC8i3CYSM6	961394	CN				
Crimson Canyon i3 4GB HDD Mini PC – NUC8i3CYSN						
BOXNUC8i3CYHFA	999LAD	None	4GB	16GB	1TB	Win10 Home
BOXNUC8i3CYHFA1	999LAG	US				
BOXNUC8i3CYHFA2	999M2G	EU				
BOXNUC8i3CYSN	961399	None		None		
BOXNUC8i3CYSN1	961400	US				
BOXNUC8i3CYSN2	961402	EU				
BOXNUC8i3CYSN3	961403	UK				
BOXNUC8i3CYSN4	961404	AU				
BOXNUC8i3CYSN5	961405	IN				

INTEL® NUC 8 PERFORMANCE

“Bean Canyon”



8th Gen Intel® Core™ i7-8559U
2.7 GHz - 4.5 GHz Turbo, 4 core, 8 thread, 8MB Cache, **28W**
Intel® Iris® Plus Graphics 655, 300 MHz – 1.2 GHz



8th Gen Intel® Core™ i5-8259U
2.3 GHz – 3.8 GHz Turbo, 4 core, 8 thread, 6MB Cache, **28W**
Intel® Iris® Plus Graphics 655, 300 MHz – 1.05 GHz



8th Gen Intel® Core™ i3-8109U
3.0 GHz - 3.6 GHz, 2 core, 4 thread, 4MB Cache, **28W**
Intel® Iris® Plus Graphics 655, 300 MHz – 1.05 GHz



- **HDMI 2.0a** port and **DisplayPort 1.2** via **Thunderbolt™ 3** / USB-C™ port
- **Supports 3x 4K displays**
- **Intel® Optane™ Memory M10, and M15 ready**
- **Intel® i219-V** 10/100/1000 Mbps Ethernet
- **Intel® Wireless-AC 9560** soldered-down, IEEE Wi-Fi 5 2x2 + **Bluetooth v5**, internal antennas
- 2x front **USB 3.1 Gen2** (one charging), 2x rear **USB 3.1 Gen2**, and 2x internal USB 2.0 via header
- Front Consumer Infrared port
- MicroSDXC slot with UHS-I support
- Up to 7.1 multichannel digital audio via HDMI or DisplayPort signals
- 3.5mm front stereo headset jack
- **Beam-forming, far-field, dual-mic array**
- Plastic with metal inner frame, replaceable lid, Kensington lock with base security
- "Tall" H chassis: 117 x 112 x 51mm, w/ **2.5" 7mm SATA3 bay and port**
- "Slim" K chassis: 117 x 112 x 36 mm
- 12 – 19V_{DC} input range, 19V_{DC} **90W** power supply with geo-specific AC cords
- Front Panel, CEC, 2x USB2.0 headers
- Front panel status RGB LED
- Microsoft Windows* 10 logo'd, compatible with various Linux distros
- VESA mounting plate included
- Individual retail packaging
- **Three-year Warranty**

Available SKUs

Mini PC Kit Chassis Board

SKU details and ordering codes on next 2 pages

INTEL® NUC 8 PERFORMANCE

“Bean Canyon”

Mini PC with HDD & Optane™ "Tall" Ordering Codes						
Product Code	MM#	AC Cord	Processor	RAM	Storage	OS
Bean Canyon i7 Optane™ HDD Mini PC – NUC8i7BEHGA						
BOXNUC8i7BEHGA	980641	No Cord	8 th Generation Core™ i7-8559U	8GB	2TB HDD + 32GB Optane™	Win10 Home
BOXNUC8i7BEHGA1	980642	US				
BOXNUC8i7BEHGA2	980643	EU				
BOXNUC8i7BEHGA3	980644	UK				
BOXNUC8i7BEHGA4	980645	AU				
BOXNUC8i7BEHGA5	980645	UK				
BOXNUC8i7BEHGA6	986455	CN				
Bean Canyon i5 Optane™ HDD Mini PC – NUC8i5BEHFA						
BOXNUC8i5BEHFA	980599	No Cord	8 th Generation Core™ i5-8259U	4GB	1TB HDD + 16GB Optane™	Win10 Home
BOXNUC8i5BEHFA1	980600	US				
BOXNUC8i5BEHFA2	980601	EU				
BOXNUC8i5BEHFA3	980602	UK				
BOXNUC8i5BEHFA4	980603	AU				
BOXNUC8i5BEHFA5	980603	UK				
BOXNUC8i5BEHFA6	986459	CN				
Bean Canyon i3 Optane™ HDD Mini PC – NUC8i3BEHFA						
BOXNUC8i3BEHFA	980604	No Cord	8 th Generation Core™ i3-8109U	4GB	1TB HDD + 16GB Optane™	Win10 Home
BOXNUC8i3BEHFA1	980605	US				
BOXNUC8i3BEHFA2	980606	EU				
BOXNUC8i3BEHFA3	980607	UK				
BOXNUC8i3BEHFA4	980616	AU				
BOXNUC8i3BEHFA5	980616	UK				
BOXNUC8i3BEHFA6	986464	CN				

Mini PC with SSD "Slim" Ordering Codes						
Product Code	MM#	AC Cord	Processor	RAM	Storage	OS
Bean Canyon i7 SSD Mini PC – NUC8i7BEKQA						
BOXNUC8i7BEKQA	980636	No Cord	8 th Generation Core™ i7-8559U	16GB	512GB SSD	Win10 Home
BOXNUC8i7BEKQA1	980637	US				
BOXNUC8i7BEKQA2	980638	EU				
BOXNUC8i7BEKQA3	980639	UK				
BOXNUC8i7BEKQA4	980640	AU				
BOXNUC8i7BEKQA5	980640	UK				
Bean Canyon i5 SSD Mini PC – NUC8i5BEKPA						
BOXNUC8i5BEKPA	980594	No Cord	8 th Generation Core™ i5-8259U	8GB	256GB SSD	Win10 Home
BOXNUC8i5BEKPA1	980595	US				
BOXNUC8i5BEKPA2	980596	EU				
BOXNUC8i5BEKPA3	980597	UK				
BOXNUC8i5BEKPA4	980598	AU				
BOXNUC8i5BEKPA5	980598	UK				

INTEL® NUC 8 PERFORMANCE

“Bean Canyon”

“Tall” Kit Ordering Codes			
Product Code	MM#	AC Cord	Processor
Bean Canyon i7 “Tall” Kit – NUC8i7BEH			
BOXNUC8i7BEH	961474	None	8 th Generation Core™ i7-8559U
BOXNUC8i7BEH1	961475	US	
BOXNUC8i7BEH2	961476	EU	
BOXNUC8i7BEH3	961477	UK	
BOXNUC8i7BEH4	961478	AU	
BOXNUC8i7BEH6	961480	CN	
Bean Canyon i5 “Tall” Kit – NUC8i5BEH			
BOXNUC8i5BEH	961517	None	8 th Generation Core™ i5-8259U
BOXNUC8i5BEH1	961518	US	
BOXNUC8i5BEH2	961524	EU	
BOXNUC8i5BEH3	961526	UK	
BOXNUC8i5BEH4	961527	AU	
BOXNUC8i5BEH6	961529	CN	
“Bean Canyon i3 “Tall” Kit – NUC8i3BEH			
Product Code	MM#	AC Cord	8 th Generation Core™ i3-8109U
BOXNUC8i3BEH	961577	None	
BOXNUC8i3BEH1	961578	US	
BOXNUC8i3BEH2	961600	EU	
BOXNUC8i3BEH3	961601	UK	
BOXNUC8i3BEH4	961602	AU	
BOXNUC8i3BEH6	961603	CN	

“Slim” Kit Ordering Codes			
Product Code	MM#	AC Cord	Processor
Bean Canyon i7 “Slim” Kit – NUC8i7BEK			
BOXNUC8i7BEK1	999FN0	US	8 th Generation Core™ i7-8559U
BOXNUC8i7BEK2	999FXA	EU	
Bean Canyon i5 “Slim” Kit – NUC8i5BEK			
BOXNUC8i5BEK	961535	None	8 th Generation Core™ i5-8259U
BOXNUC8i5BEK1	961486	US	
BOXNUC8i5BEK2	961487	EU	
BOXNUC8i5BEK3	961488	UK	
BOXNUC8i5BEK4	961489	AU	
BOXNUC8i5BEK6	961491	CN	
Bean Canyon i3 “Slim” Kit – NUC8i3BEK			
BOXNUC8i3BEK	961536	None	8 th Generation Core™ i3-8109U
BOXNUC8i3BEK1	961537	US	
BOXNUC8i3BEK2	961538	EU	
BOXNUC8i3BEK3	961539	UK	
BOXNUC8i3BEK4	961540	AU	
BOXNUC8i3BEK6	961542	CN	

INTEL® NUC 7 PERFORMANCE

“Baby Canyon”



7th Generation Intel® Core™ i7-7567U
3.5 GHz - 4.0 GHz Turbo, 2 core, 4 thread, 4MB Cache, 28W
Intel® Iris® Plus Graphics 650, 300 MHz - 1.1 GHz



7th Generation Intel® Core™ i5-7260U
2.2 GHz - 3.4 GHz Turbo, 2 core, 4 thread, 4MB Cache, 15W
Intel® Iris® Plus Graphics 640, 300 MHz - 950 MHz



7th Generation Intel® Core™ i3-7100U
2.4 GHz, 2 core, 4 thread, 3MB Cache, 15W
Intel® HD Graphics 620, 300 MHz - 1 GHz



- **HDMI 2.0a** port and **DisplayPort 1.2** via **Thunderbolt™ 3** / USB-C™ port
- **Thunderbolt™ 3** port on Core™ i5 and Core™ i7 models, USB-C™ port on Core™ i3 model
- **USB Type-C™** port, with USB 3.1 and DisplayPort signals (Core™ i3 models)
- **Supports 3x 4K displays**
- **Intel® Optane™ Memory ready**
- **Intel® i219-V** 10/100/1000 Mbps Ethernet
- **Intel® Wireless-AC 8265** soldered-down, IEEE Wi-Fi 5 2x2 + **Bluetooth v4.2**, internal antennas
- 2x front USB 3.0 (one charging), 2x rear USB 3.0, and 2x internal USB 2.0 via header
- Front Consumer Infrared port
- MicroSDXC slot with UHS-I support
- Up to 7.1 multichannel digital audio via HDMI or DisplayPort signals
- 3.5mm front stereo headset jack
- **Dual-mic array**
- Aluminum and plastic, replaceable lid, Kensington lock with base security
- "Tall" H chassis: 117 x 112 x 51mm, w/ **2.5" 7mm SATA3 bay and port**
- "Slim" K chassis: 117 x 112 x 35 mm
- 12 – 19V_{DC} input range, 19V_{DC} 65W wall-wart power supply with replaceable plugs
- Front Panel, CEC, 2x USB2.0 headers
- **Front panel RGB LED ring**
- Microsoft Windows® 10 logo'd, compatible with various Linux distros
- VESA mounting plate included
- Individual retail packaging
- **Three-year Warranty**

Available SKUs

Mini PC Kit Chassis Board

SKU details and ordering codes on next page

INTEL® NUC 7 PERFORMANCE

“Baby Canyon”

Mini PC with HDD & Optane™ "Tall" Ordering Codes						
Product Code	MM#	AC Plugs	Processor	RAM	Storage	OS
Baby Canyon i7 Optane™ HDD Mini PC – NUC7i7BNHXG						
BOXNUC7i7BNHXG	960827	US, EU, UK, AU	7 th Generation Core™ i7-7567U	8GB	2TB HDD + 32GB Optane™	Win10 Home
BOXNUC7i7BNHXGL	960839	IN, CN, KR, BR, AR				
Baby Canyon i5 Optane™ HDD Mini PC – NUC7i5BNHXF						
BOXNUC7i5BNHXF	960845	US, EU, UK, AU	7 th Generation Core™ i5-7260U	4GB	1TB HDD + 16GB Optane™	Win10 Home
BOXNUC7i5BNHXFL	960846	IN, CN, KR, BR, AR				
Baby Canyon i3 Optane™ HDD Mini PC – NUC7i3BNHXF						
BOXNUC7i3BNHXF	960847	US, EU, UK, AU	7 th Generation Core™ i3-7100U	4GB	1TB HDD + 16GB Optane™	Win10 Home
BOXNUC7i3BNHXFL	960848	IN, CN, KR, BR, AR				

Mini PC with SSD "Slim" Ordering Codes						
Product Code	MM#	AC Plugs	Processor	RAM	Storage	OS
Baby Canyon i7 SSD Mini PC – NUC7i7BNKQ						
BOXNUC7i7BNKQ	963162	US, EU, UK, AU	7 th Generation Core™ i7-7567U	16GB	512GB SSD	Win10 Home
BOXNUC7i7BNKQL	963164	IN, CN, KR, BR, AR				
Baby Canyon i5 SSD Mini PC – NUC7i5BNKP						
BOXNUC7i5BNKP	962995	US, EU, UK, AU	7 th Generation Core™ i5-7260U	8GB	256GB SSD	Win10 Home
BOXNUC7i5BNKPL	963000	IN, CN, KR, BR, AR				

"Tall" Kit Ordering Codes			
Product Code	MM#	AC Cord	Processor
Baby Canyon i7 "Tall" Kit – NUC7i7BNH			
BOXNUC7i7BNH	950951	US, EU, UK, AU	7 th Generation Core™ i7-7567U
BOXNUC7i7BNHL	950952	IN, CN, KR, BR, AR	
Baby Canyon i5 "Tall" Kit – NUC7i5BNH			
BOXNUC7i5BNH	950959	US, EU, UK, AU	7 th Generation Core™ i5-7260U
BOXNUC7i5BNHL	950961	IN, CN, KR, BR, AR	
Baby Canyon i3 "Tall" Kit – NUC7i3BNH			
BOXNUC7i3BNH	950967	US, EU, UK, AU	7 th Generation Core™ i3-7100U
BOXNUC7i3BNHL	950969	IN, CN, KR, BR, AR	

Kit "Slim" Ordering Codes			
Product Code	MM#	AC Cord	Processor
Baby Canyon i5 "Slim" Kit – NUC7i5BNK			
BOXNUC7i5BNK	950955	US, EU, UK, AU	7 th Generation Core™ i5-7260U
BOXNUC7i5BNKL	950957	IN, CN, KR, BR, AR	
Baby Canyon i3 "Slim" Kit – NUC7i3BNK			
BOXNUC7i3BNK	950963	US, EU, UK, AU	7 th Generation Core™ i3-7100U
BOXNUC7i3BNKL	950965	IN, CN, KR, BR, AR	

INTEL® NUC 6 PERFORMANCE

“Skull Canyon”



6th Generation Intel® Core™ i7-6770HQ (NUC6i7KY)
2.6 GHz - 3.5 GHz Turbo, 4 core, 8 thread, 6MB Cache, 45W
Intel® Iris® Pro Graphics 580, 350 MHz - 950 MHz

- **Dual channel DDR4-2133+ SODIMMs**, 1.2V, 32GB maximum
- **2x M.2 22x42/80 key M** slots for PCIe x4 Gen3 NVMe / AHCI or SATA3 SSD, **RAID-0 and RAID-1 capable**
- **HDMI 2.0** and **Mini DisplayPort 1.2** ports
- **Thunderbolt™ 3** port
- **Supports 3x 4K displays**
- **Intel® i219-LM 10/100/1000 Mbps Ethernet**
- **Intel® Wireless-AC 8260** soldered-down, IEEE Wi-Fi 5 2x2 + **Bluetooth v4.2**, internal antennas
- 2x front USB 3.0 (one charging), 2x rear USB 3.0, 2x internal USB 3.0 and 2x internal USB 2.0 via header
- Front Consumer Infrared port
- SDXC slot with UHS-I support
- Up to 7.1 multichannel digital audio via HDMI or DisplayPort signals
- 3.5mm front stereo headset jack, 3.5mm rear speaker / TOSLINK combo jack
- Plastic with metal inner frame, replaceable lid, Kensington lock with base security
- **211 x 116 x 28 mm (0.69 L)**
- 19V_{DC} 120W power supply with geo-specific AC cords
- Common I/O header with Front Panel, CEC, 2x USB2.0 signals
- 2x USB 3.0 ports header
- Microsoft Windows* 10, 8.1, 7 logo'd, compatible with various Linux distros
- Second plain lid and VESA mounting plate included
- Individual retail packaging
- **Three-year Warranty**



Available SKUs
 Mini PC Kit Chassis Board
SKU details and ordering codes on next page

INTEL® NUC 6 PERFORMANCE

“Skull Canyon”

Kit Ordering Codes

Product Code	MM#	AC Cord	Processor
BOXNUC6i7KYK	944578	None	6 th Generation Core™ i7-6770HQ
BOXNUC6i7KYK1	944579	US	
BOXNUC6i7KYK2	944580	EU	
BOXNUC6i7KYK3	944581	UK	
BOXNUC6i7KYK4	944582	AU	

INTEL® NUC 5 PERFORMANCE

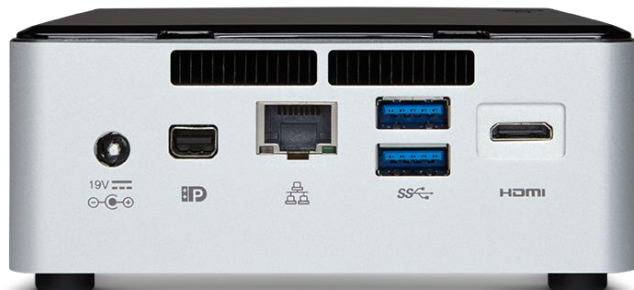
“Rock Canyon”



5th Generation Intel® Core™ i5-5257U
2.7 GHz – 3.1 GHz Turbo, 2 core, 4 thread, 3MB Cache, 20W
Intel® HD Graphics 6100, 300 MHz – 1.05 GHz



5th Generation Intel® Core™ i3-5005U
2.0 GHz, 2 core, 4 thread, 3MB Cache, 15W
Intel® HD Graphics 5500, 300 MHz – 850 MHz



- **Mini HDMI 1.4a** and **Mini DisplayPort 1.2**
- **Supports 3x 4K displays**
- **Intel® i218-V** 10/100/1000 Mbps Ethernet
- **Intel® Wireless-AC 7265** soldered-down, IEEE 802.11ac 2x2 + **Bluetooth v4.2**, internal antennas
- 2x front USB 3.0 (one charging), 2x rear USB 3.0, and 2x internal USB 2.0 via header
- **M.2 22x42/60/80 key M** slot for PCIe x4 Gen2 NVMe / AHCI SSD
- 2.5" 9.5mm SATA3 bay and port
- Front Consumer Infrared port
- Up to 7.1 multichannel digital audio via HDMI or DisplayPort signals
- 3.5mm front stereo headset jack
- Aluminum chassis, replaceable lid, Kensington lock
- 115 x 111 x 49 mm
- 12 – 19V_{DC} input range, 19V_{DC} 65W power supply with geo-specific AC cords or wall-wart power supply with replaceable plugs
- AUX_PWR, 2x USB2.0 headers
- Microsoft Windows* 10, 8.1, 7 logo'd, compatible with various Linux distros
- VESA mounting plate included
- Individual retail packaging
- **Three-year Warranty**

Available SKUs

Mini PC Kit Chassis Board

SKU details and ordering codes on next page

INTEL® NUC 5 PERFORMANCE

“Rock Canyon”

“Tall” Kit Ordering Codes

Product Code	MM#	AC Plugs	Processor
Rock Canyon Refresh i5 “Tall” Kit – NUC5i5RYHS			
BOXNUC5i5RYHS	999CG5	US EU UK AU IN	5 th Generation Core™ i5-5257U
Rock Canyon Refresh i3 “Tall” Kit – NUC5i3RYHS			
BOXNUC5i3RYHS	983260	IN, CN, AR, EU, US, UK	5 th Generation Core™ i3-5005U

Rock Canyon Refresh i3 “Tall” L9 Kit – NUC5i3RYHSN

Product Code	MM#	AC Plugs	Processor	RAM	Storage
BOXNUC5i3RYHSN	983261	IN, CN, AR, EU, US, UK	5 th Generation Core™ i3-5005U	4GB	1TB HDD

INTEL® NUC PRO

ENGINEERED FOR YOUR BUSINESS AND EDUCATION NEEDS



- Based on Intel® Xeon, Intel® Core™ i7 vPro™, Core™ i5 vPro™ and Intel® Core™ i3
- 3 year Product Life Cycle
- Space saving designs
- Validated for 24/7 operation* and other industry-leading Intel reliability tests
- Functional lid designs, adding additional display and connectivity options.

**Varies by product*

Products

Generation	Code Name	Mini PC	Kit	Board
9 th Gen	Quartz Canyon		X	X
8 th Gen	Provo Canyon	X	X	X
8 th Gen	Dawson Canyon		X	X
7 th Gen	Dawson Canyon	X	X	X

Target Usage Scenarios

Digital Signage

SMB / Education

Creator



INTEL® NUC 9 PRO

“Quartz Canyon”



Intel® Xeon® E-2286M Processor (NUC9VXQN)
2.4 GHz – 5.0 GHz Turbo, 8 Core, 16 thread, 16MB Cache, 45W
Intel® UHD Graphics P630, 350 MHz - 1250 MHz
Intel® vPro™ Technology, Intel® AMT



9th Generation Intel® Core™ i7-9850H (NUC9V7QN)
2.6 GHz – 4.6 GHz Turbo, 6 Core, 12 thread, 12MB Cache, 45W
Intel® UHD Graphics 630, 350 MHz - 1150 MHz
Intel® vPro™ Technology, Intel® AMT



- A** Pre-installed **Quartz Canyon Compute Element**:
 - **Dual channel DDR4 SODIMMs**, 1.2V, max 64GB @ 2400MHz or 32GB @ 2666MHz, ECC Memory Support (Xeon only)
 - **2x M.2 key M slots**: 42/80 + 42/80/110 PCH-attached PCIe x4 Gen3 NVMe / AHCI or SATA3 SSD, **RAID-0 and RAID-1 capable**
 - **Intel® Optane™ SSD and Intel® Optane™ Memory M10 and H10 ready**
 - **TPM 2.0**
 - **Runtime BIOS Resilience with Dynamic Attestation**
 - **HDMI 2.0a** connector
 - **2x Thunderbolt™ 3** ports
 - **Supports 3x 4K displays** (Intel® UHD Graphics)
 - **2x Intel® 10/100/1000 Mbps (i219-LM and i210-AT) Ethernet ports**
 - **Intel® Wi-Fi 6 AX200** 2.4Gbps, WiAMT + **Bluetooth v5**, dual internal antennas
 - **4x USB 3.1 Gen2 Type-A** connectors
 - Up to 7.1 multichannel digital audio via HDMI or DisplayPort signals
 - 3.5mm rear speaker / TOSLINK combo jack
 - Internal Front Panel Audio, CEC, 2x USB 3.1 headers, 2x USB 2.0 headers
- **Quartz Canyon chassis**:
 - B** • **PCIe X16 slot** with 6+2-pin & 6-pin PCIe power connectors, up to 225W, up to 8" card length, dual-slot capable
 - C** • **PCIe X4 slot**
 - **CPU-attached M.2 slot** 42/80/110 PCIe X4 Gen 3, **Intel® Optane™ SSD ready**
 - **SDXC slot with UHS-II support**
 - **2x USB 3.1 Gen2 Type-A** (front), **1x USB 2.0 Type-A** (internal) connectors
 - 3.5mm front stereo headset jack
 - Plastic with metal inner frame, Kensington lock with panel security
 - **238 x 216 x 96 mm (5.0 L)**
 - **500W internal power supply** with geo-specific C13 AC cords
- Microsoft Windows* 10 logo, compatible with Windows Server 2019; compatible with various Linux distros
- Individual retail packaging
- **Three-year Warranty**

Available SKUs

Mini PC Kit Chassis Compute Element **A**

SKU details and ordering codes on next page

INTEL® NUC 9 PRO

“Quartz Canyon”

Kit Ordering Codes			
Product Code	MM#	AC Cord (C13)	Processor
Quartz Canyon Kit – NUC9VXQNX			
BKNUC9VXQNX	999DNA	None	Xeon E-2286M
BKNUC9VXQNX1	999DNC	US	
BKNUC9VXQNX2	999DND	EU	
BKNUC9VXQNX3	999DNF	UK	
BKNUC9VXQNX4	999DNG	AU	
BKNUC9VXQNX6	999DNH	CN	
Quartz Canyon Kit – NUC9V7QNX			
BKNUC9V7QNX	999DNJ	None	9 th Generation Core™ i7-9850H
BKNUC9V7QNX1	999DNK	US	
BKNUC9V7QNX2	999DNL	EU	
BKNUC9V7QNX3	999DNM	UK	
BKNUC9V7QNX4	999DNN	AU	
BKNUC9V7QNX6	999DNP	CN	

Quartz Canyon Compute Element Ordering Codes		
Product Code	MM#	Processor
BKNUC9VXQNB	999LX2	Xeon® E-2286M
BKNUC9V7QNB	999LX3	9 th Gen i7-9850H

INTEL® NUC 8 PRO

“Provo Canyon”



8th Generation Intel® Core™ i7-8665U (NUC8v7PN)

1.8 GHz to 4.8 GHz Turbo, 4 Core, 8 Thread, 8MB Cache, 15W
Intel® UHD Graphics 620, 300 MHz – 1.15 GHz
Intel® vPro™ Technology, Intel® AMT v12



8th Generation Intel® Core™ i5-8365U (NUC8v5PN)

1.6 GHz to 4.1 GHz Turbo, 4 Core, 8 Thread 6MB Cache, 15W
Intel® UHD Graphics 620, 300 MHz – 1.10 GHz
Intel® vPro™ Technology, Intel® AMT v12



8th Generation Intel® Core™ i3-8145U (NUC8i3PN)

2.1 GHz to 3.9 GHz Turbo, 2 Core, 4 Thread, 4MB Cache, 15W
Intel® UHD Graphics 620, 300 MHz – 1.00 GHz



Family Features

- **Dual HDMI 2.0a** (4K 60Hz, HDR), w/HDCP2.2 and **built-in CEC for both ports**
- **Thunderbolt 3** (incl. DP and USB3.1) via back panel type C connector
- **Internal 4-lane eDP 1.4 connector** (support for up to 4k@60Hz)
- Triple display support via dual DP/MST on Type C plus HDMI/eDP (or dual HDMI plus eDP on board SKU)
- **M.2 22x80 key M** slot for PCIe x4 NVMe or SATA SSD
- **Intel® Optane™ Memory** ready; **Intel® Optane™ Memory H10 with Solid State Storage** ready
- **Intel® i219-LM** 10/100/1000 Mbps RJ45 Ethernet
- Intel® Wireless-AC 9560 vPro (i7 vPro and i5 vPro kits), Intel® Wireless-AC 9560 (i3 kits) on M.2 slot
- TPM 2.0 (worldwide and China options; i7 vPro and i5 vPro SKUs only)
- Dual-channel DDR4-2400 SODIMMs, 1.2V, 32GB max.
- 2x front and 1x rear USB 3.1 gen 2 type A ports, 1x internal USB 3.0 header
- 1x rear type A and 2x internal USB 2.0 headers (all USB ports with individual USB power control)
- 1x **RS232** serial port header
- Up to 7.1 multichannel (or dual 8-channel) digital audio via HDMI
- Front panel header (with Vcc5/1A, 5Vsby/2A, 3.3Vsby/1A)
- **Higher external ambient operating temperatures** than other NUC models
- **Qualified for 24x7 operation; delayed AC start; DC overvoltage protection**
- **Display emulation** (headless display, 2nd virtual display, persistent displays)
- Plastic chassis, replaceable lid, Kensington lock with base security, **DC cable strain relief**
 - 19V_{DC} 90W power supply adapter with geo-specific AC cords (IEC C5 connector)
 - VESA mounting plate included
 - Tall kit only: 2.5" drive bay (7mm), and internal expansion bay via backpanel (1x DB9 punched bracket pre-installed)
- "Tall" H chassis: 117 x 112 x 53.5 mm, "Slim" K chassis: 117 x 112 x 37mm, Board 101.6 x 104.1 mm
- 12 – 24V_{DC} rear jack, internal 2x2 power connector
- Microsoft Windows* 10 (logo'd), Windows 10 IOT Enterprise, Windows Server 2019
- Compatible with various Linux distros
- Individual brown-box packaging; **Three Year Product Life Cycle; Three Year Warranty**

Available SKUs

Mini PC Kit Chassis Board
SKU details and ordering codes on next 2 pages

L9 Kit and Mini PC Ordering Codes						
Product Code	MM#	AC Cord (C5)	Processor	RAM	Storage	OS
Provo Canyon i3 – NUC8i3PNKO						
BKNUC8i3PNKO	999MK1	None	8 th Generation Core™ i3-8145U	4GB DDR4	256GB NVMe	None
BKNUC8i3PNKOC	999MK2	None				Win 10 Pro
BKNUC8i3PNKOC1	999MK3	US				
BKNUC8i3PNKOC2	999MK4	EU				
Provo Canyon i5 vPro – NUC8v5PNKW						
BKNUC8v5PNKW	999KZ7	None	8 th Generation Core™ i5-8365U	8GB DDR4	Intel 660p SSD 512GB NVMe	None
BKNUC8v5PNKWC	999MK5	None				Win 10 Pro
BKNUC8v5PNKWC1	999KZC	US				
BKNUC8v5PNKWC2	999KZD	EU				
Provo Canyon i7 vPro – BKNUC8v7PNKQ						
BKNUC8v7PNKQ	999KZV	None	8 th Generation Core™ i7-8665U	16GB DDR4	Intel 660p SSD 512GB NVMe	None
BKNUC8v7PNKQC	999MK6	None				Win 10 Pro
BKNUC8v7PNKQC1	999KZP	US				
BKNUC8v7PNKQC2	999KZR	EU				

Provo Canyon Mini PC for Intel Unite						
BKNUC8v5PNKWU1	999KZG	US	8 th Generation Core™ i5-8365U	8GB DDR4	Intel 660p SSD 512GB NVMe	Win 10 Pro
BKNUC8v5PNKWU2	999KZH	EU				w/Intel Unite®
BKNUC8v7PNKQU1	999KZM	US	8 th Generation Core™ i7-8665U	16GB DDR4	Intel 660p SSD 512GB NVMe	Win 10 Pro
BKNUC8v7PNKQU2	999KZN	EU				w/Intel Unite®

Provo Canyon i7 vPro “Tall” Kit – NUC8v7PNH				
Product Code	MM#	AC Cord (C5)	Processor	TPM
BKNUC8v7PNH	999L0T	None	8 th Generation Core™ i7-8665U	WW
BKNUC8v7PNH1	999L0V	US		WW
BKNUC8v7PNH2	999L0W	EU		WW
BKNUC8v7PNH3	999L0X	UK		WW
BKNUC8v7PNH4	999L0Z	AU		WW
BKNUC8v7PNH5	999L10	CN		WW
BKNUC8v7PNH6	999L10	CN		CN

Provo Canyon i5 vPro “Tall” Kit – NUC8v5PNH				
Product Code	MM#	AC Cord	Processor	TPM
BKNUC8v5PNH	999KXV	None	8 th Generation Core™ i5-8365U	WW
BKNUC8v5PNH1	999KXW	US		WW
BKNUC8v5PNH2	999KXZ	EU		WW
BKNUC8v5PNH3	999KZ4	UK		WW
BKNUC8v5PNH4	999KZ5	AU		WW
BKNUC8v5PNH5	999KZ6	CN		WW
BKNUC8v5PNH6	999KZ6	CN		CN

Provo Canyon i3 “Tall” Kit – NUC8i3PNH			
Product Code	MM#	AC Cord (C5)	Processor
BKNUC8i3PNH	999KTR	None	8 th Generation Core™ i3-8145U
BKNUC8i3PNH1	999KV5	US	
BKNUC8i3PNH2	999KW6	EU	
BKNUC8i3PNH3	999KW7	UK	
BKNUC8i3PNH4	999KW8	AU	
BKNUC8i3PNH6	999KWD	CN	

Provo Canyon i7 vPro “Slim” Kit – NUC8v7PNK				
Product Code	MM#	AC Cord (C5)	Processor	TPM
BKNUC8v7PNK	999L08	None	8 th Generation Core™ i7-8665U	WW
BKNUC8v7PNK1	999L0D	US		WW
BKNUC8v7PNK2	999L0G	EU		WW
BKNUC8v7PNK3	999L0J	UK		WW
BKNUC8v7PNK4	999L0L	AU		WW
BKNUC8v7PNK5	999L0M	CN		WW
BKNUC8v7PNK6	999L0M	CN		CN

Provo Canyon i5 vPro “Slim” Kit – NUC8v5PNK				
Product Code	MM#	AC Cord (C5)	Processor	TPM
BKNUC8v5PNK	999KX7	None	8 th Generation Core™ i5-8365U	WW
BKNUC8v5PNK1	999KX8	US		WW
BKNUC8v5PNK2	999KX9	EU		WW
BKNUC8v5PNK3	999KXM	UK		WW
BKNUC8v5PNK4	999KXN	AU		WW
BKNUC8v5PNK5	999KXR	CN		WW
BKNUC8v5PNK6	999KXR	CN		CN

Provo Canyon i3 “Slim” Kit – NUC8i3PNK			
Product Code	MM#	AC Cord (C5)	Processor
BKNUC8i3PNK	999KTJ	None	8 th Generation Core™ i3-8145U
BKNUC8i3PNK1	999KTK	US	
BKNUC8i3PNK2	999KTL	EU	
BKNUC8i3PNK3	999KTM	UK	
BKNUC8i3PNK4	999KTN	AU	
BKNUC8i3PNK6	999KTP	CN	

Provo Canyon Board			
Product Code	CPU	MM#	TPM
BKNUC8v7PNB	8 th Generation Core™ i7 vPro™	999L05	WW
BKNUC8v5PNB	8 th Generation Core™ i5 vPro™	999KX5	WW
BKNUC8i3PNB	8 th Generation Core™ i3	999KT6	None

INTEL® NUC 7 PRO

“Dawson Canyon”



8th Generation Intel® Core™ i7-8650U

1.90 GHz to 4.20 GHz Turbo, Quad Core, 8MB Cache, 15W TDP
Intel® UHD Graphics 620, 300 MHz – 1.15 GHz
Intel® vPro™ Technology, Intel® AMT v11.6



7th Generation Intel® Core™ i5-7300U

2.6 GHz to 3.5 GHz Turbo, Dual Core, 3MB Cache, 15W
Intel® HD Graphics 620, 300 MHz - 1.0 GHz
Intel® vPro™ Technology, Intel® AMT v11.6



7th Generation Intel® Core™ i3-7100U

2.4 GHz, Dual Core, 3MB Cache, 15W
Intel® HD Graphics 620, 300 MHz - 1.0 GHz



Family Features

- **Dual HDMI 2.0a** (4K 60Hz, HDR), w/HDCP2.2 and **built-in CEC**
- **Internal 4-lane eDP 1.4 connector**
- **M.2 22x80 key M** slot for PCIe x4 NVMe or SATA SSD
- **Intel® Optane™ Memory** ready
- **Intel® i219-LM** 10/100/1000 Mbps RJ45 Ethernet
- Intel® Wireless-AC 8265 vPro (i7 vPro and i5 vPro kits), Intel® Wireless-AC 8265 (i3 kits) on M.2 slot
- TPM 2.0 (worldwide on i7 vPro and i5 vPro SKUs; China-compliant option on i5 vPro kits only)
- Dual-channel DDR4-2400 SODIMMs, 1.2V, 32GB max.
- 2x front and 2x rear USB 3.1 gen 2 type A ports, 1x internal USB 3.0 header
- 2x internal USB 2.0 headers (all USB ports with individual USB power control)
- 1x **RS232 serial** port header
- Up to 7.1 multichannel (or dual 8-channel) digital audio via HDMI
- Front panel header (with Vcc5/1A, 5Vsby2A, 3.3Vsby/1A)
- **Qualified for 24x7 operation; delayed AC start**
- **EDID emulation** (headless display, persistent displays)
- Aluminum and plastic chassis, replaceable lid, Kensington lock with base security
 - 19V_{DC} 65W power supply adapter with geo-specific AC cords
 - VESA mounting plate included
 - Tall kit only: 2.5" drive bay (9mm), and internal expansion bay via backpanel (1x DB9 punched bracket pre-installed)
- "Tall" H chassis: 115 x 111 x 52 mm, "Slim" K chassis: 115 x 111 x 36mm, Board 102 x 102 mm
- 12 – 24V_{DC} rear jack, internal 2x2 power connector
- Microsoft Windows* 10 (logo'd), Windows 10 IOT Enterprise, Windows Server 2019
- Certified with Ubuntu 16.04 LTS; compatible with various Linux distros
- Individual brown-box packaging; **Three-year Warranty**

Available Skus

Mini PC Kit Chassis Board

SKU details and ordering codes on next 2 pages

Mini PC Ordering Codes						
Product Code	MM#	AC Cord	Processor	RAM	Storage	OS
Dawson Canyon i5 vPro SSD Mini PC – NUC7i5DNKPC						
BLKNUC7i5DNKPC	978025	None	7 th Generation Core™ i5-7300U	8GB DDR4	256GB NVMe	Win 10 Pro
BLKNUC7i5DNKPC1	978026	US				
BLKNUC7i5DNKPC2	978027	EU				
BLKNUC7i5DNKPC3	978028	UK				
BLKNUC7i5DNKPC4	978029	AU				
Dawson Canyon i3 SSD Mini PC – NUC7i3DNKTC						
BLKNUC7i3DNKTC	978020	None	7 th Generation Core™ i3-7100U	4GB DDR4	128 GB SATA3	Win 10 Pro
BLKNUC7i3DNKTC1	978021	US				
BLKNUC7i3DNKTC2	978022	EU				
BLKNUC7i3DNKTC3	978023	UK				
BLKNUC7i3DNKTC4	978024	AU				
Dawson Canyon i3 HDD Mini PC – NUC7i3DNHNC						
BLKNUC7i3DNHNC	978014	None	7 th Generation Core™ i3-7100U	4GB DDR4	1TB HDD	Win 10 Pro
BLKNUC7i3DNHNC1	978015	US				
BLKNUC7i3DNHNC2	978016	EU				
BLKNUC7i3DNHNC3	978017	UK				
BLKNUC7i3DNHNC4	978018	AU				
BLKNUC7i3DNHNC5	978019	IN				
Dawson Canyon i5 vPro SSD Mini PC for Intel Unite – NUC7i5DNKPU						
BLKNUC7i5DNKPU1	999JKL	US	7 th Generation Core™ i5-7300U	8GB DDR4	256GB NVMe	Win 10 Pro w/Intel Unite®
BLKNUC7i5DNKPU2	999JKN	EU				

Dawson Canyon i7 vPro “Tall” Kit – NUC7i7DNHE

Product Code	MM#	AC Cord	Processor	TPM
BLKNUC7i7DNHE	966378	None	8 th Generation Core™ i7-8650U	WW
BLKNUC7i7DNH1E	966379	US		WW
BLKNUC7i7DNH2E	966380	EU		WW
BLKNUC7i7DNH3E	966381	UK		WW
BLKNUC7i7DNH4E	966382	AU		WW

Dawson Canyon i7 vPro “Slim” Kit – NUC7i7DNKE

Product Code	MM#	AC Cord	Processor	TPM
BLKNUC7i7DNKE	966371	None	8 th Generation Core™ i7-8650U	WW
BLKNUC7i7DNK1E	966372	US		WW
BLKNUC7i7DNK2E	966373	EU		WW
BLKNUC7i7DNK3E	966374	UK		WW
BLKNUC7i7DNK4E	966375	AU		WW

Dawson Canyon Board

Product Code	CPU	MM#	TPM
BLKNUC7i7DNBE	8 th Generation Core™ i7 vPro™	966370	WW
BLKNUC7i5DNBE	7 th Generation Core™ i5 vPro™	958787	WW
BLKNUC7i3DNBE	7 th Generation Core™ i3	958795	None

Dawson Canyon i5 vPro “Tall” Kit – NUC7i5DNHE

Product Code	MM#	AC Cord	Processor	TPM
BLKNUC7i5DNHE	958791	None	7 th Generation Core™ i5- 7300U	WW
BLKNUC7i5DNH1E	960808	US		WW
BLKNUC7i5DNH2E	960809	EU		WW
BLKNUC7i5DNH3E	960810	UK		WW
BLKNUC7i5DNH4E	960811	AU		WW
BLKNUC7i5DNH6EL	962019	CN		CN

Dawson Canyon i5 vPro “Slim” Kit – NUC7i5DNKE

Product Code	MM#	AC Cord	Processor	TPM
BLKNUC7i5DNKE	958789	None	7 th Generation Core™ i5-7300U	WW
BLKNUC7i5DNK1E	960791	US		WW
BLKNUC7i5DNK2E	960792	EU		WW
BLKNUC7i5DNK3E	960793	UK		WW
BLKNUC7i5DNK4E	960807	AU		WW
BLKNUC7i5DNK6EL	961982	CN		CN

Dawson Canyon i3 “Tall” Kit – NUC7i3DNHE

Product Code	MM#	AC Cord	Processor
BLKNUC7i3DNHE	958804	None	7 th Generation Core™ i3-7100U
BLKNUC7i3DNH1E	960819	US	
BLKNUC7i3DNH2E	960820	EU	
BLKNUC7i3DNH3E	960821	UK	
BLKNUC7i3DNH4E	960822	AU	

Dawson Canyon i3 “Slim” Kit – NUC7i3DNKE

Product Code	MM#	AC Cord	Processor
BLKNUC7i3DNKE	958801	None	7 th Generation Core™ i3-7100U
BLKNUC7i3DNK1E	960812	US	
BLKNUC7i3DNK2E	960813	EU	
BLKNUC7i3DNK3E	960814	UK	
BLKNUC7i3DNK4E	960816	AU	

INTEL® NUC RUGGED

ENGINEERED FOR ROBUSTNESS



- Fanless / dust-resistant*
- 3 year product availability
- Customizable IO
- Validated for 24/7 operation and other industry-leading Intel reliability tests
- Board-level robustness against dirty (oscillating) DC input*
- 0-40°C external ambient operating temperature tolerance

**Varies by product*

Available SKUs

Processor	Code Name	Mini PC	Kit	Chassis	Board
Celeron	Chaco Canyon		X		X
8 th Gen ¹	Austin Beach			X	X

Target Usage Scenarios

Industrial



Digital Signage



Edge Data Analytics



INTEL® NUC 8 RUGGED



Intel® Celeron® Processor N3350 (NUC8CCH)

1.1 GHz to 2.4 GHz Burst, 2 Core, 2 Thread, 2 MB cache, 6W TDP
Intel® HD Graphics 500



“Chaco Canyon”

Family Features

- **Dual HDMI** (1x HDMI 2.0a, 1x HDMI 1.4), with **built-in CEC** for both ports (Support for single 4k@60Hz or dual 1080@60Hz)
- **IP50 rated fanless and ventless dust-resistant chassis with custom plugs for unused ports**
- **Internal 4-lane eDP connector** (support for up to 4k@60Hz)
- **4GB RAM**, dual-channel (soldered-down)
- **64GB eMMC** soldered-down; **M.2 2280 key M** slot for PCIe x4 NVMe or SATA SSD
- **Intel® i211-AT** 10/100/1000 Mbps RJ45 Ethernet
- **Intel® Wireless-AC 3168** M.2 card pre-installed w/internal antennas (kit SKUs only)
- 1x front USB 3.0, 1x rear USB 3.0, 2x rear USB 2.0
- 1x internal USB 3.0 header (host & device modes)
- 2x internal USB 2.0 headers (all USB ports with individual USB power control)
- 1x **RS232 serial** port header
- Up to 7.1 multichannel digital audio via HDMI
- Analog audio stereo output jack
- Front-panel header (incl. Vcc5/1A, 5Vsby/2A, 3.3Vsby/1A)
- **Qualified for 24x7 operation; delayed AC start; DC transient voltage suppression**
- **Display emulation** allows 2nd virtual display and persistent displays
- 12 – 24V_{DC} rear jack, internal 2x2 connector
- Plastic chassis, Kensington lock with base security, DC cable strain relief
 - **0~40degC** external ambient operating temperature
 - 19V_{DC} 65W power supply adapter with geo-specific AC cords
 - Mounting options: VESA mounting holes built into chassis (for slim profile mounting), picture frame keyholes, mounting indentations for cable ties, planned 3rd party DIN rail bracket
 - **Front panel expansion bay** (compliant with daughtercards from 3rd party functional lids)
- Chassis dimensions: 154 x 108 x 32 mm; Board dimensions: 146 x 102 mm
- Supports Microsoft Windows* 10 Pro, Windows 10 IOT Enterprise
- Compatible with various Linux distros; Android validation and image availability TBD
- Individual brown-box packaging
- **Three Year Product Life Cycle; Three Year Warranty**

Available SKUs

Mini PC Kit Chassis Board
SKU details and ordering codes on next page

INTEL NUC 8 RUGGED

“Chaco Canyon”

Chaco Canyon Kit – NUC8CCHKR

Product Code	MM#	AC Cord	Processor
BKNUC8CCHKR	999DKA	None	Intel® Celeron N3350
BKNUC8CCHKR1	999DKC	US	
BKNUC8CCHKR2	999DKD	EU	
BKNUC8CCHKR3	999DKF	UK	
BKNUC8CCHKR4	999DKG	AU	
BKNUC8CCHKR5	999DKH	IN	

Chaco Canyon Board – NUC8CCHB

Product Code	MM#
BKNUC8CCHB	999DKK

INTEL® NUC ESSENTIAL

COST-EFFICIENT WITH INTEL® RELIABILITY & QUALITY

- ✓ Choose Intel® Celeron or Pentium
- ✓ Space saving @ 0.65L
- ✓ Windows 10 Home preinstalled*
- ✓ 4K @ 60 Hz with UHD*



Products

NUC Generation	Code Name	Kit	Mini PC
7 th Gen	June Canyon	X	X
6 th Gen	Arches Canyon	X	X
5 th Gen	Pinnacle Canyon	X	

**Varies by product*

Target Usage Scenarios

Kids Productivity

Streaming

Entry Signage



INTEL® NUC 7 ESSENTIAL

“June Canyon”



Intel® Pentium® Silver J5005
1.5 GHz - 2.8 GHz burst, 4 core, 4 thread, **10W**
Intel® UHD Graphics 605, 800 MHz



Intel® Celeron® J4005
2.0 GHz - 2.7 GHz burst, 2 core, 2 thread, **10W**
Intel® UHD Graphics 600, 700 MHz



- **Dual-channel DDR4-2400 SODIMMs**, 1.2V, 8GB maximum
- **2.5" 9.5mm SATA3 bay and port**
- **2x HDMI 2.0a** (4K 60Hz), both ports support HDCP 2.2
- **Supports 2x 4K displays**
- **10/100/1000 Mbps Ethernet**
- **Intel® Wireless-AC 9462** soldered-down, IEEE Wi-Fi 5 1x1 + **Bluetooth v5**, internal antennas
- 2x front USB 3.0 (one charging), 2x rear USB 3.0, and 2x internal USB 2.0 via header
- Up to 7.1 multichannel digital audio via HDMI
- 3.5mm front stereo headset jack, 3.5mm rear speaker / TOSLINK combo jack
- **Beam-forming, far-field, dual-mic array**
- Front Consumer Infrared port
- SDXC slot with UHS-I support
- Plastic with metal inner frame, replaceable lid, Kensington lock with base security
- 115 x 111 x 51 mm
- 12 – 19V_{DC} input range, 19V_{DC} 65W power supply with geo-specific AC cords
- Front Panel, CEC, RGB LED, 2x USB2.0 headers
- Microsoft Windows* 10 logo'd; Certified with Ubuntu 16.04 LTS; compatible with various Linux distros
- Front panel status RGB LED
- VESA mounting plate included
- Individual retail packaging
- **Three-year Warranty**

Available Skus

Mini PC Kit Chassis Board

SKU details and ordering codes on next page

INTEL® NUC 7 ESSENTIAL

“June Canyon”

June Canyon Mini PC – NUC7CJYSAL						
Product Code	MM#	AC Cord	Processor	RAM	Storage	OS
BOXNUC7CJYSAL	961286	None	Intel® Celeron J4005	4GB DDR4	32GB eMMC	Win10 Home
BOXNUC7CJYSAL1	961287	US				
BOXNUC7CJYSAL2	961288	EU				
BOXNUC7CJYSAL3	961289	UK				
BOXNUC7CJYSAL4	961290	AU				
BOXNUC7CJYSAL5	961291	IN				
BOXNUC7CJYSAL6	961292	CN				

June Canyon Pentium Kit – NUC7PJYH			
Product Code	MM#	AC Cord	Processor
BOXNUC7PJYH	961275	None	Intel® Pentium Silver J5005
BOXNUC7PJYH1	961276	US	
BOXNUC7PJYH2	961277	EU	
BOXNUC7PJYH3	961278	UK	
BOXNUC7PJYH4	961279	AU	
BOXNUC7PJYH5	961280	IN	
BOXNUC7PJYH6	961281	CN	

June Canyon Celeron Kit – NUC7CJYH			
Product Code	MM#	AC Cord	Processor
BOXNUC7CJYH	961251	None	Intel® Celeron J4005
BOXNUC7CJYH1	961252	US	
BOXNUC7CJYH2	961253	EU	
BOXNUC7CJYH3	961254	UK	
BOXNUC7CJYH4	961255	AU	
BOXNUC7CJYH5	961256	IN	
BOXNUC7CJYH6	961257	CN	

INTEL® NUC 6 ESSENTIAL

“Arches Canyon”



Intel® Celeron® J3455
1.5 GHz - 2.3 GHz burst, 4 core, 4 thread, 10W
Intel® HD Graphics 500, 250 - 700 MHz



- **Dual-channel DDR3L-1866 SODIMMs**, 1.35V, 8GB maximum
- **2.5" 9.5mm SATA3 bay and port**
- **HDMI 2.0, HDB15 VGA ports**
- **Supports 1x 4K and 1x 2048x1536 VGA display**
- **10/100/1000 Mbps Ethernet**
- **Intel® Wireless-AC 3168** M.2 22x30 card, IEEE Wi-Fi 5 1x1 + **Bluetooth v4.2**, internal antennas
- 2x front USB 3.0 (one charging), 2x rear USB 3.0, and 2x internal USB 2.0 via header
- Up to 7.1 multichannel digital audio via HDMI
- 3.5mm front stereo headset jack, 3.5mm rear speaker / TOSLINK combo jack
- **Dual-mic array**
- Front Consumer Infrared port
- SDXC slot with UHS-I support
- Plastic with metal inner frame, replaceable lid, Kensington lock with base security
- 115 x 111 x 51 mm
- 12 – 19V_{DC} input range, 19V_{DC} 65W wall-wart power supply with replaceable plugs
- Front Panel, AUX_PWR, 2x USB2.0 headers
- **Front panel RGB LED ring**
- Microsoft Windows* 10 logo'd, compatible with various Linux distros
- VESA mounting plate included
- Individual retail packaging
- **Three-year Warranty**

Available Skus

Mini PC Kit Chassis Board

SKU details and ordering codes on next page

INTEL® NUC 6 ESSENTIAL

“Arches Canyon”

Arches Canyon Mini PC – NUC6CAYS

Product Code	MM#	AC Plugs	Processor	RAM	Storage	OS
BOXNUC6CAYSJL	950794	IN, CN, KR, BR, AR	Intel® Celeron J3455	2GB DDR3L	32GB eMMC	Win 10 Home
BOXNUC6CAYSJ	950796	US, EU, UK, AU				

Arches Canyon Kit – NUC6CAYH

Product Code	MM#	AC Plugs	Processor
BOXNUC6CAYHL	950798	IN, CN, KR, BR, AR	Intel® Celeron J3455
BOXNUC6CAYH	950804	US, EU, UK, AU	

INTEL® NUC 5 ESSENTIAL

“Pinnacle Canyon”



Intel® Pentium® N3700

1.6 GHz - 2.4 GHz burst, 4 core, 4 thread, **6W**
Intel® HD Graphics, 400 - 700 MHz



Intel® Celeron® N3060

1.6 GHz - 2.48 GHz burst, 2 core, 2 thread, **6W**
Intel® HD Graphics, 320 - 600 / 700 MHz



- **DDR3L-1600 SODIMM**, 1.35V, 8GB maximum
- **2.5" 9.5mm SATA3 bay and port**
- **HDMI 1.4b, HDB15 VGA** ports
- **Supports 1x 4K and 1x 2048x1536 VGA display**
- **10/100/1000 Mbps Ethernet**
- **Intel® Wireless-AC 3165** M.2 22x30 card, IEEE Wi-Fi 5 1x1 + **Bluetooth v4.2**, internal antennas
- 2x front USB 3.0 (one charging), 2x rear USB 3.0, and 2x internal USB 2.0 via header
- Up to 7.1 multichannel digital audio via HDMI
- 3.5mm front stereo headset jack, 3.5mm rear speaker / TOSLINK combo jack
- Front Consumer Infrared port
- SDXC slot with UHS-I support
- Plastic with metal inner frame, replaceable lid, Kensington lock with base security
- 115 x 111 x 52 mm
- 12 – 19V_{DC} input range, 19V_{DC} 65W wall-wart power supply with replaceable plugs
- Front Panel, AUX_PWR, 2x USB2.0 headers
- Microsoft Windows* 10, 8.1, 8.0 logo'd, compatible with various Linux distros
- VESA mounting plate included
- Individual retail packaging
- **Three-year Warranty**

Available Skus

Mini PC Kit Chassis Board

SKU details and ordering codes on next page

INTEL® NUC 5 ESSENTIAL

“Pinnacle Canyon”

Pinnacle Canyon Celeron Kit – NUC5CPYH

Product Code	MM#	AC Plugs	Processor
BOXNUC5CPYH	940289	US, EU, UK, AU	Intel® Celeron N3060

Pinnacle Canyon Pentium Kit – NUC5PPYH

Product Code	MM#	AC Plugs	Processor
BOXNUC5PPYH	943203	US, EU, UK, AU	Intel® Pentium N3700

AC CORDS FOR INTEL® NUC

All new NUC families shipping Q3'2017 and later include a corded power-brick AC adapter, instead of the wall-wart adapter with replaceable plugs. Each NUC SKU will either include one SKU-specific AC cord, or no AC cord (just the power adapter). Refer to the Ordering Codes table shown in the one-pagers for details on each SKU, and the cord type required (C5 or C13).

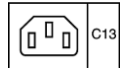
- NUC SKUs with US, EU, UK, AU, and CN cords included are immediately available, at order quantity in multiples of 5
- For orders that require IN, AR, BR, JP/TW, and ZA AC cords, the no-cord SKU must be ordered along with the appropriate AC cord below. As with NUC SKUs, the AC cord SKUs also come in 5-packs.
- This applies only to new NUC families starting with Dawson Canyon (C5), June Canyon (C5), Hades Canyon (C13), Bean Canyon (C5), Crimson Canyon (C5), and Islay Canyon (C5).

AC Cord Ordering Codes – C5 Type



Description	Product Code	MM#
Bulk AC cord - 0.6m / 2ft, C5 connector, India plug, single pack	AC06C05IN	962133
Bulk AC cord - 0.6m / 2ft, C5 connector, China plug, single pack	AC06C05CN	962138
Bulk AC cord - 0.6m / 2ft, C5 connector, Argentina plug, single pack	AC06C05AR	962140
Bulk AC cord - 0.6m / 2ft, C5 connector, Japan/Taiwan plug, single pack	AC06C05JP	962141
Bulk AC cord - 0.6m / 2ft, C5 connector, Brazil plug, single pack	AC06C05BR	962142
Bulk AC cord - 0.6m / 2ft, C5 connector, South Africa plug, single pack	AC06C05ZA	962143
Bulk AC cord - 0.6m / 2ft, C5 connector, Switzerland plug, single pack	AC06C05CH	962982
Bulk AC cord - 0.6m / 2ft, C5 connector, USA plug, single pack	AC06C05US	979493
Bulk AC cord - 0.6m / 2ft, C5 connector, EU plug, single pack	AC06C05EU	979494
Bulk AC cord - 0.6m / 2ft, C5 connector, UK plug, single pack	AC06C05UK	979495
Bulk AC cord - 0.6m / 2ft, C5 connector, AU plug, single pack	AC06C05AU	979504

AC Cord Ordering Codes – C13 Type



Description	Product Code	MM#
Bulk AC cord - 0.6m / 2ft, C13 connector, India plug, single pack	AC06C13IN	976384
Bulk AC cord - 0.6m / 2ft, C13 connector, China plug, single pack	AC06C13CN	976385
Bulk AC cord - 0.6m / 2ft, C13 connector, Argentina plug, single pack	AC06C13AR	976386
Bulk AC cord - 0.6m / 2ft, C13 connector, Japan/Taiwan plug, single pack	AC06C13JP	976387
Bulk AC cord - 0.6m / 2ft, C13 connector, Brazil plug, single pack	AC06C13BR	976388
Bulk AC cord - 0.6m / 2ft, C13 connector, South Africa plug, single pack	AC06C13ZA	976389
Bulk AC cord - 0.6m / 2ft, C13 connector, Switzerland plug, single pack	AC06C13CH	976390
Bulk AC cord - 0.6m / 2ft, C13 connector, USA plug, single pack	AC06C13US	979516
Bulk AC cord - 0.6m / 2ft, C13 connector, EU plug, single pack	AC06C13EU	979535
Bulk AC cord - 0.6m / 2ft, C13 connector, UK plug, single pack	AC06C13UK	979536
Bulk AC cord - 0.6m / 2ft, C13 connector, AU plug, single pack	AC06C13AU	979537