

[Get a Quote](#)

Overview

WS-C2960L-16PS-LL offering 16 x GigE PoE+ ports, 2 x 1G SFP and LAN Lite, is one of the Cisco Catalyst 2960-L Series Switches. These 2960-L switches are fixed-configuration, Gigabit Ethernet switches that provide entry-level enterprise-class Layer 2 access for branch offices, conventional workspaces, and out-of-wiring closet applications. Designed for operational simplicity to lower total cost of ownership, they enable secure and energy-efficient business operations with a range of Cisco IOS Software features.

Quick Specs

Figure 1 shows the appearance of WS-C2960L-16PS-LL.

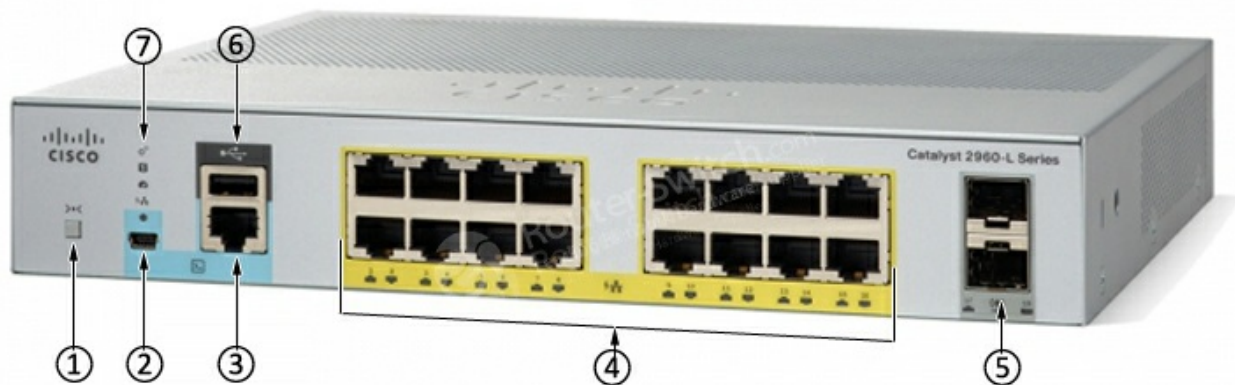


Table 1 shows the Quick Specs.

| | |
|----------------------------|--|
| Product Code | WS-C2960L-16PS-LL |
| IOS | LAN Lite |
| Forwarding bandwidth | 18 Gbps |
| Switching bandwidth | 36 Gbps |
| 10/100/1000 Ethernet Ports | 16 PoE+ Ports |
| Available PoE Power | 120W |
| Uplink Interfaces | 2 x 1G SFP |
| Fanless | Y |
| DRAM | 512 MB |
| Flash memory | 256 MB |
| Dimensions (H x D x W) | 1.73 x 9.45 x 10.56 in. (4.4 x 24 x 26.8 cm) |
| Net Weight | 5.73 lb (2.6 kg) |

Product Details

Figure 2 shows the front panel of WS-C2960L-16PS-LL.



Note:

| | | | |
|-----|--------------------------------|-----|------------------|
| (1) | Mode button | (5) | SFP module slots |
| (2) | USB mini-Type B (console) port | (6) | USB Type A port |
| (3) | RJ-45 Console Port | (7) | System LEDs |
| (4) | 16 x 10/100/1000 PoE+ ports | | |

· There are a Security slot, Heat sink fins and an AC power connector on the back panel.

The Accessories

Table 2 shows the recommended elements for the WS-C2960L-16PS-LL.

| Model | Description |
|----------------------------------|---|
| CAB-CONSOLE-USB | Cisco CAB-CONSOLE-USB Console Cable 6 ft with USB Type A and mini-B |
| CAB-CONSOLE-RJ45 | Cisco CAB-CONSOLE-RJ45 Console Cable 6ft with RJ45 and DB9F |
| CAB-ACE= | CAB-ACE= AC Power Cord (Europe), C13, CEE 7, 1.5M |
| CAB-ACU= | CAB-ACU= AC Power Cord (UK), C13, BS 1363, 2.5m |

Compare to Similar Items

Table 3 shows the comparison of WS-C2960L-16PS-LL and WS-C2960L-16TS-LL.

| Model | WS-C2960L-16PS-LL | WS-C2960L-16TS-LL |
|----------------------------|-------------------|-----------------------------------|
| IOS | LAN Lite | LAN Lite |
| Forwarding bandwidth | 18 Gbps | 18 Gbps |
| Switching bandwidth | 36 Gbps | 36 Gbps |
| 10/100/1000 Ethernet Ports | 16 | 16 |
| Available PoE Power | 120W | N/A |
| Uplink Interfaces | 2 x 1G SFP | 2 x 1G SFP |

Get more information

Do you have any question about the WS-C2960L-16PS-LL?

Contact us now via [Live Chat](#) or sales@router-switch.com.

Specification

WS-C2960L-16PS-LL Specification

Configurations

| | |
|----------------------------|--|
| 10/100/1000 Ethernet Ports | 16 |
| Uplink Interfaces | 2 SFP |
| Available PoE Power | 120W |
| Fanless | Y |
| Dimensions (H x D x W) | 1.73 x 9.45 x 10.56 in. (4.4 x 24 x 26.8 cm) |
| Net Weight | 5.73 lb (2.6 kg) |

Console Ports

| | |
|--|---|
| RJ45 Ethernet | 1 |
| USB mini-B | 1 |
| USB-A port for storage and Bluetooth console | 1 |

Memory and Processor

| | |
|--------------|---------------|
| CPU | ARMv7 800 MHz |
| DRAM | 512 MB |
| Flash memory | 256 MB |

Performance

| | |
|--------------------------------------|--------------|
| Forwarding bandwidth | 18 Gbps |
| Switching bandwidth | 36 Gbps |
| Forwarding rate (64-byte L3 packets) | 26.78 Mpps |
| Unicast MAC addresses | 8K |
| Maximum active VLANs | 64 |
| VLAN IDs available | 4094 |
| Maximum STP instances | 64 |
| Maximum SPAN sessions | 1 |
| MTU-L3 packet | 9198 bytes |
| Jumbo Ethernet frame | 10,240 bytes |
| MTBF in hours (Data) | 2,416,689 |
| MTBF in hours (PoE) | 313,496 |

Environment

Operating temperature

| | |
|----------------|------------------------------|
| Up to 5,000 ft | 23°F to 113°F (-5°C to 45°C) |
|----------------|------------------------------|

| | |
|---|---|
| Up to 10,000 ft | 23°F to 104°F (–5°C to 40°C) |
| Operating altitude | 10,000 ft (3000m) |
| Operating relative humidity | 5% to 90% at 40°C |
| Storage temperature | –13° to 158°F (–25° to 70°C) |
| Storage altitude | 15,000 ft (4500m) |
| Storage relative humidity | 5% to 95% at 65°C |
| Storage altitude | Minimum ambient temperature for cold start is 0°C (32°F) |
| Electrical | PoE |
| Voltage (autoranging) | 110 to 220V AC in |
| Frequency | 50 to 60 Hz |
| Current | 0.24A to 0.28A |
| Power rating (maximum consumption) | 0.19 kVA |
| Power consumption (watts) | |
| 0% traffic | 21.9 |
| 10% traffic | 27.1 |
| 100% traffic | 27.1 |
| Weighted average | 25.4 |
| Safety and Compliance | |
| Safety | UL 60950-1 Second Edition, CAN/CSA-C22.2 No. 60950-1 Second Edition, EN 60950-1 Second Edition, IEC 60950-1 Second Edition, AS/NZS 60950-1 |
| EMC: emissions | 47CFR Part 15 (CFR 47) Class A, AS/NZS CISPR22 Class A, CISPR22 Class A, EN55022 Class A, ICES003 Class A, VCCI Class A, EN61000-3-2, EN61000-3-3, KN22 Class A, CNS13438 Class A |
| EMC: immunity | EN55024, CISPR24, EN300386, KN24 |
| Environmental | Reduction of Hazardous Substances (RoHS) including Directive 2011/65/EU |
| Telco | Common Language Equipment Identifier (CLEI) code |
| U.S. government certifications | USGv6 and IPv6 Ready Logo |
| Connectors and Interfaces | |
| Ethernet interfaces | 10BASE-T ports: RJ-45 connectors, 2-pair Category 3, 4, or 5 unshielded twisted-pair (UTP) cabling |
| | 100BASE-TX ports: RJ-45 connectors, 2-pair Category 5 UTP cabling |
| | 1000BASE-T ports: RJ-45 connectors, 4-pair Category 5 UTP cabling |
| | 1000BASE-T SFP-based ports: RJ-45 connectors, 4-pair Category 5 UTP cabling |
| Indicator LEDs | Per-port status: link integrity, disabled, activity, speed, and full duplex |
| | System status: system, PoE, and link speed |
| Console cables | CAB-CONSOLE-RJ45 Console cable 6 ft. with RJ-45 |
| | CAB-CONSOLE-USB Console cable 6 ft. with USB Type A and mini-B connectors |
| Power | Use the supplied AC power cord to connect the AC power connector to an AC power outlet |

Want to Buy

Order Now

Get a Quote

Why Router-switch.com

As a leading network hardware supplier, Router-switch.com focuses on original new ICT equipment of [Cisco](#), [Huawei](#), [HPE](#), [Dell](#), [Hikvision](#), [Juniper](#), [Fortinet](#), etc.



200+

Countries we Sold



18,000+

Customers Trusted



\$20,000,000

Inventory Available



50%-98%

Off Global List Price



100%

Safe Online Shopping

Contact Us

- Tel: +1-626-655-0998 (USA) +852-3050-1066 / +852-3174-6166
- Fax: +852-3050-1066 (Hong Kong)
- Email: sales@router-switch.com