

[Get a Quote](#)

Overview

The HPE Aruba 5400R Switch Series is a Layer 3 modular switch series that delivers high-performance, low latency and resiliency for a better mobile-first campus experience. J9822A is a HPE 5412R z12 Switch, including 1 HPE 5400R z12 Management Module ([J9827A](#)) and 1 HPE 5412R z12 Switch Fan Tray ([J9832A](#)).

Quick Spec

Figure 1 shows the appearance of HPE J9822A with installed modules. These modules should be purchased separately.

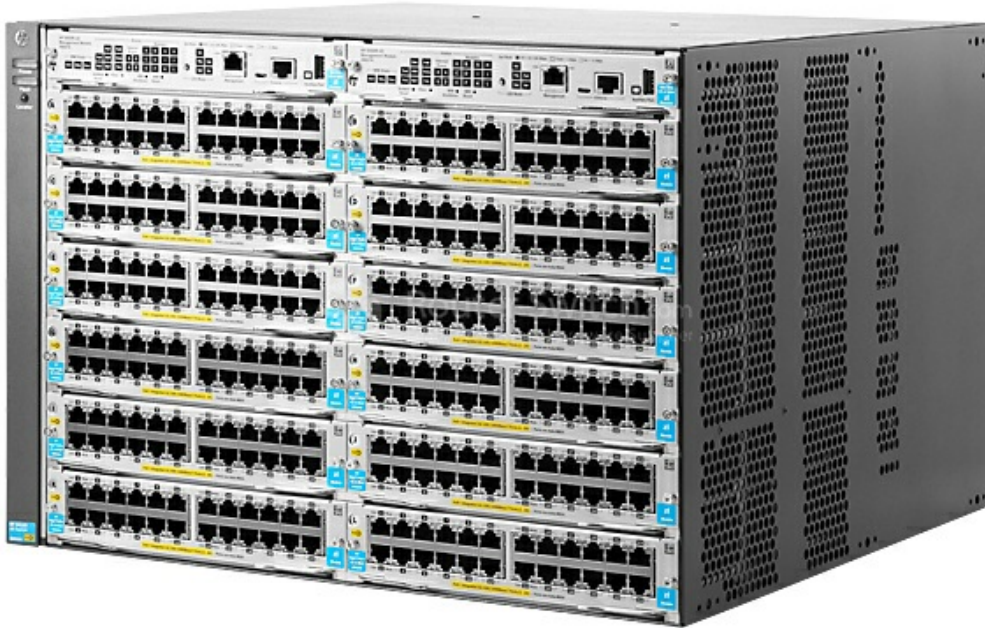


Table 1 shows the quick spec.

Product Number	J9822A
Type	HPE 5412R z12 Switch
Included accessories	1 HPE 5400R z12 Management Module (J9827A) 1 HPE 5412R z12 Switch Fan Tray (J9832A)
I/O ports and slots	12 open module slots Supports a maximum of 288 autosensing 10/100/1000 ports or 288 SFP ports or 96 SFP+ ports or 96 HPE Smart Rate Multi-Gigabit or 24 40GbE ports, or a combination
Power supplies	4 power supply slots 2 minimum power supplies required (ordered separately)
Fan Tray	Includes: 1 x J9832A 1 fan tray slot
Dimensions (W x D x H)	17.5(w) x 17.75(d) x 12.1(h) in. (44.45 x 45.09 x 30.73 cm) (7U height)
Weight	38.1 lb (17.28 kg)

Product Details

Figure 2 shows the front view of HPE J9822A with installed modules. These modules should be purchased separately.

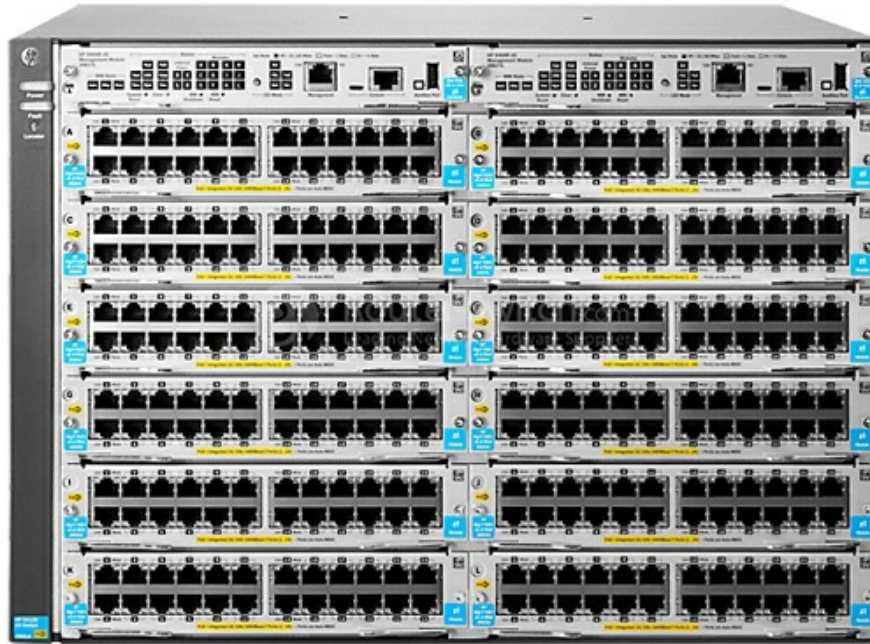
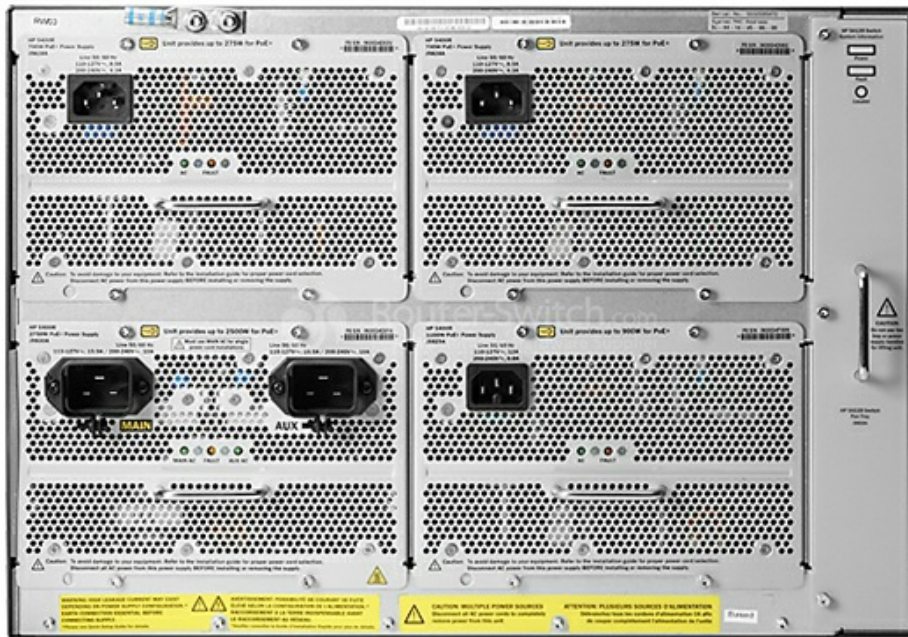


Figure 3 shows the back view of HPE J9822A with installed modules. These modules should be purchased separately.



Compare to Similar Items

Table 2 shows the comparison.

Product Code	J9821A	J9822A
Type	HPE 5406R z12 Switch	HPE 5412R z12 Switch
Included accessories	1 HPE 5400R z12 Management Module (J9827A) 1 HPE 5406R z12 Switch Fan Tray (J9831A)	1 HPE 5400R z12 Management Module (J9827A) 1 HPE 5412R z12 Switch Fan Tray (J9832A)
I/O ports and slots	6 open module slots Supports a maximum of 144 autosensing 10/100/1000 ports or 144 SFP ports or 48 SFP+ ports or 48 HPE Smart Rate Multi-Gigabit or 12 40GbE ports, or a combination	12 open module slots Supports a maximum of 288 autosensing 10/100/1000 ports or 288 SFP ports or 96 SFP+ ports or 96 HPE Smart Rate Multi-Gigabit or 24 40GbE ports, or a combination
Power supplies	2 power supply slots 1 minimum power supply required (ordered separately)	4 power supply slots 2 minimum power supplies required (ordered separately)

Fan Tray	Includes: 1 x J9831A 1 fan tray slot	Includes: 1 x J9832A 1 fan tray slot
-----------------	---	---

Get more information

Do you have any question about the J9822A?

Contact us now via [Live Chat](#) or sales@router-switch.com.

Specification

J9822A Specification	
Type	HPE 5412R z12 Switch
Included accessories	1 HPE 5400R z12 Management Module (J9827A) 1 HPE 5412R z12 Switch Fan Tray (J9832A)
I/O ports and slots	12 open module slots Supports a maximum of 288 autosensing 10/100/1000 ports or 288 SFP ports or 96 SFP+ ports or 96 HPE Smart Rate Multi-Gigabit or 24 40GbE ports, or a combination
Power supplies	4 power supply slots 2 minimum power supplies required (ordered separately)
Fan Tray	Includes: 1 x J9832A 1 fan tray slot
Dimensions (W x D x H)	17.5(w) x 17.75(d) x 12.1(h) in. (44.45 x 45.09 x 30.73 cm) (7U height)
Weight	38.1 lb (17.28 kg)
Memory and processor	
v3 Gigabit Module	Dual ARM® Cortex A9 @ 1 GHz; Packet buffer size: 13.5 MB internal
v2 Gigabit Module	ARM 11 @ 450 MHz; Packet buffer size: 18 MB internal
v3 10G Module	Dual ARM Cortex A9 @ 1 GHz; Packet buffer size: 13.5 MB internal
v2 10G Module	ARM 11 @ 550 MHz; Packet buffer size: 18 MB internal
v3 40G Module	Dual ARM Cortex A9 @ 1 GHz; Packet buffer size: 13.5 MB internal
Management Module	Freescale P2020 dual core @ 1.2 GHz, 16 MB flash, 1 GB SD Card, 4 GB DDR3 SODIMM
Mounting and enclosure	Mounts in an EIA standard 19-inch telco rack or equipment cabinet (hardware included); Horizontal surface mounting only
Performance (IPv6 Ready Certified)	
1000 Mb Latency	< 2.8 μs (FIFO 64-byte packets)
10 Gbps Latency	< 1.8 μs (FIFO 64-byte packets)
40 Gbps Latency	< 1.5 μs (FIFO 64-byte packets)
Throughput	Up to 1142.8 Mpps
Routing/Switching capacity	1920 Gbps
Switch fabric speed	2030 Gbps
Routing table size	10000 entries (IPv4), 5000 entries (IPv6)

MAC address table size	64000 entries
Environment	
Operating temperature	32°F to 113°F (0°C to 45°C); 0°C to 40°C with J8177C transceiver installed, 0°C to 35°C with FIPS Opacity Shield installed
Operating relative humidity	15% to 95% @ 113°F (45°C), noncondensing
Nonoperating/Storage temperature	-40°F to 158°F (-40°C to 70°C)
Nonoperating/Storage relative humidity	15% to 95% @ 149°F (65°C), noncondensing
Altitude	Up to 10,000 ft (3 km)
Acoustic	Power: 49 dB, Pressure: 35.7 dB ISO 7779,, ISO 9296
Electrical characteristics	
Frequency	50/60 Hz
80plus.org Certification	Gold
Description	Does not come with power supply. Two power supply slots are available; three different power supplies are available. See power supply products for additional specifications.
Maximum heat dissipation	4900 BTU/hr (5169 kJ/hr), (max. non-PoE); 7400 BTU/hr (7,807 kJ/hr), (max. using PoE)
Voltage	100–127/200–240 VAC, rated
Idle power	(depending on power supply chosen)
Notes	Heat dissipation does not include heat dissipated by the PoE-powered devices themselves. When more than four power cords are installed in a 5412R z12 switch chassis, additional installation requirements are needed.
Safety	CSA 22.2 No. 60950; UL 60950; IEC 60950; EN 60950
Emissions	FCC part 15 Class A; EN 55022/CISPR 22 Class A
Immunity EN ESD Radiated EFT/Burst Surge Conducted Power frequency magnetic field Harmonics Flicker	EN 55024, CISPR 24 IEC 61000-4-2; 4 kV CD, 8 kV AD; HPE ENV. 765.002 IEC 61000-4-3; 3 V/m IEC 61000-4-4; 1.0 kV (power line), 0.5 kV (signal line) IEC 61000-4-5; 1 kV/2 kV AC, 1 kV signal, 0.5 kV DC IEC 61000-4-6; 3 Vrms IEC 61000-4-8; 1 A/m, 50 or 60 Hz IEC 61000-4-11; >95% reduction, 0.5 period; 30% reduction, 25 periods EN 61000-3-2, IEC 61000-3-2 EN 61000-3-3, IEC 61000-3-3
Management	IMC—Intelligent Management Center; Command-line interface; Web browser; Configuration menu; Out-of-band management (RJ-45 Ethernet); SNMP Manager; Out-of-band management (serial RS-232C or micro USB) AirWave Network Management
Notes	Supported 1G SFP transceivers are revision “B” or later (product number ends with the letter “B” or later; For example, J9142B, J8177C).

Want to Buy

[Order Now](#)
[Get a Quote](#)

Why Router-switch.com

As a leading network hardware supplier, Router-switch.com focuses on original new ICT equipment of [Cisco](#), [Huawei](#), [HPE](#), [Dell](#), [Hikvision](#), [Juniper](#), [Fortinet](#), etc.



200+

Countries we Sold



18,000+

Customers Trusted



\$20,000,000

Inventory Available



50%-98%

Off Global List Price



100%

Safe Online Shopping

Contact Us

- Tel: +1-626-655-0998 (USA) +852-3050-1066 / +852-3174-6166
- Fax: +852-3050-1066 (Hong Kong)
- Email: sales@router-switch.com