



B-SERIES

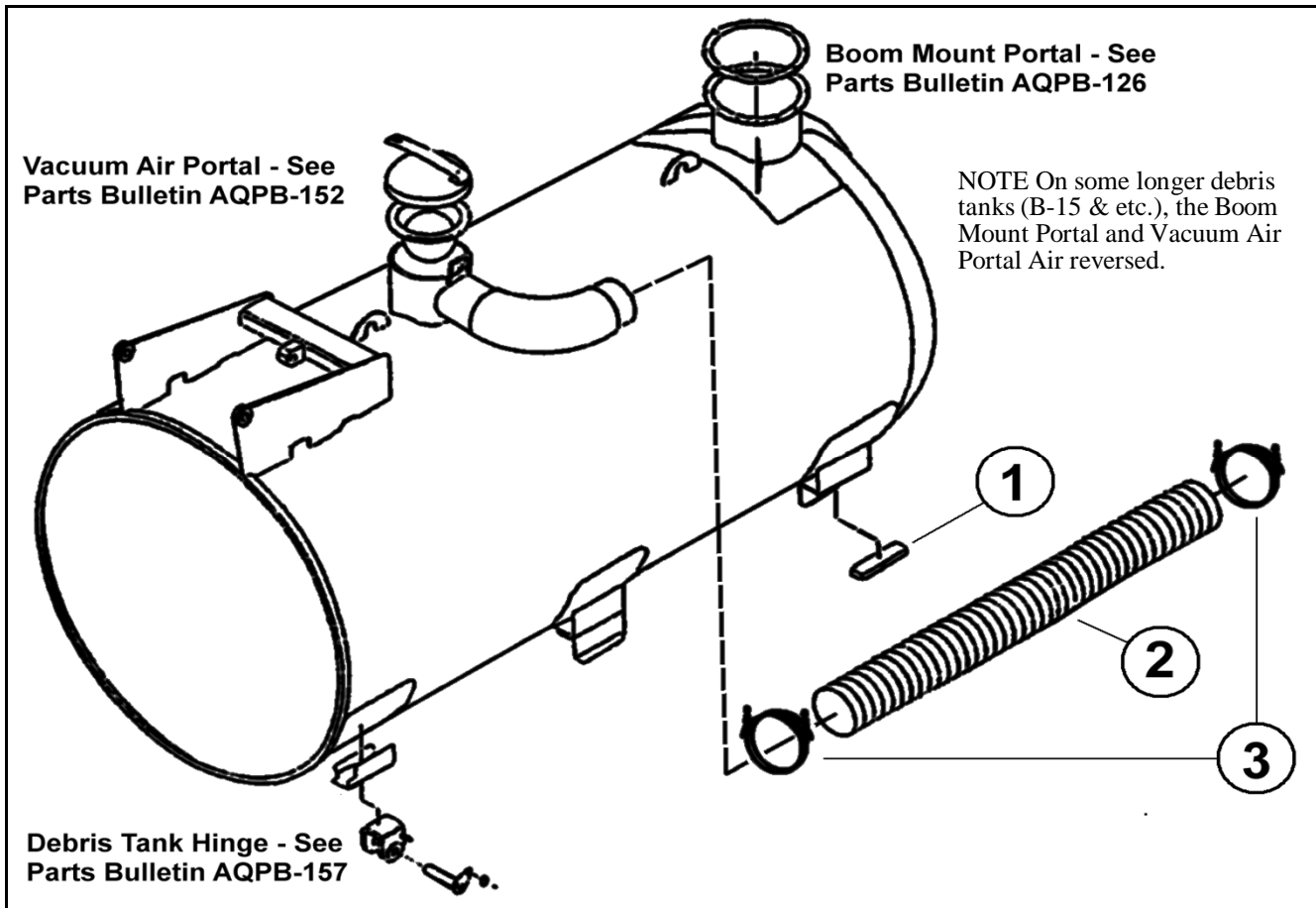
PARTS COUNTERMAN'S CATALOG

Section 3

Debris Tank & Door



MISCELLANEOUS DEBRIS TANK COMPONENTS

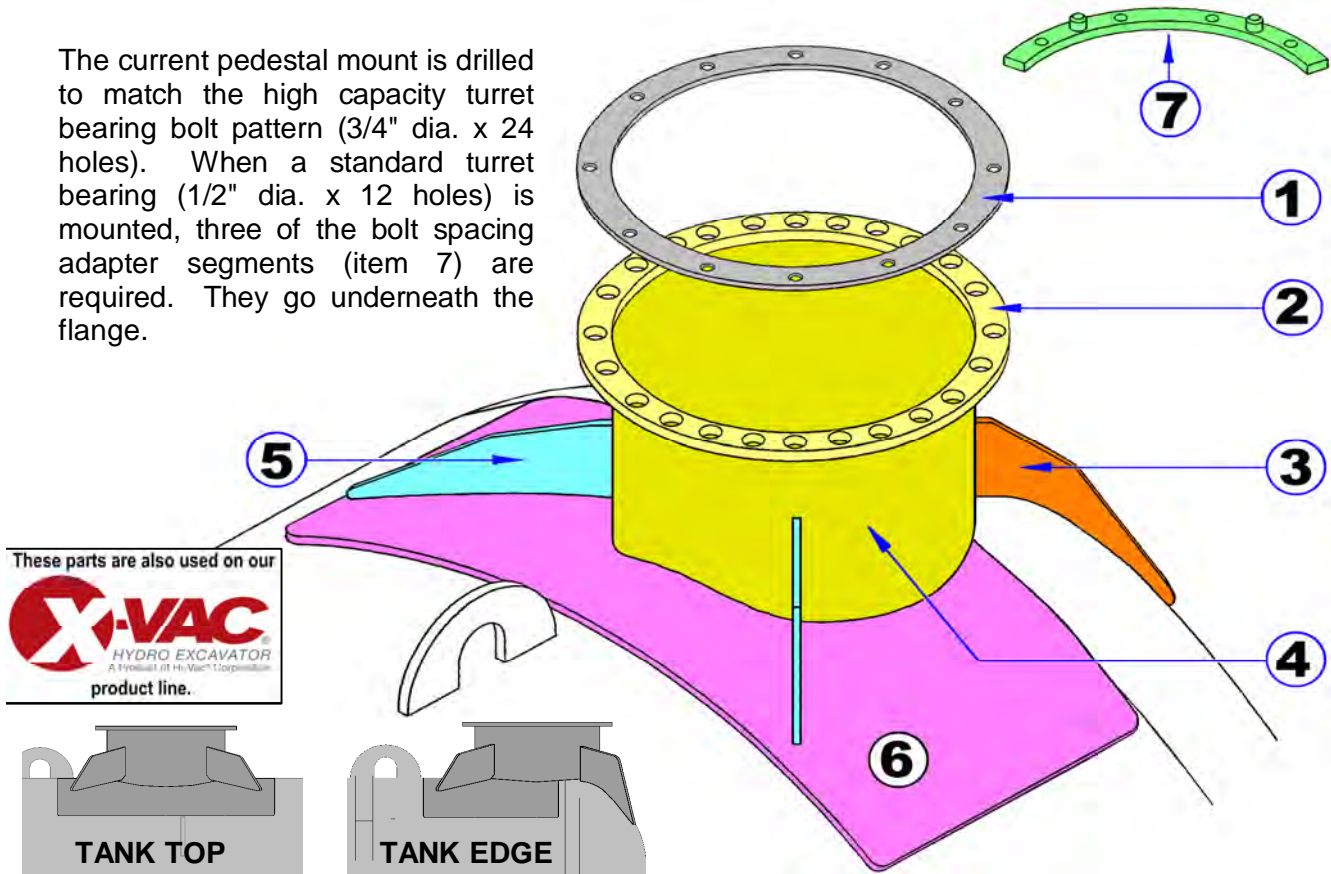


ITEM #	PART NO.	DESCRIPTION	QTY.
1	A240791-3	Tank Resting Pad (rubber bonded to metal) 2.5" x 10"	4
2	A176627-16	8" x 16" Vacuum Hose - Some B-15	1
	A176630-6	8" x 31.5" Vacuum Hose - B12/1000	1
	A176627-1	8" x 55-15/16" Vacuum Hose - B6	1
	A176630	8" x 80" Vacuum Hose - Standard B-5, B-10 & B52; Some B-15	1
	A176630-3	8" x 86" Vacuum Hose - A few NYC B-10	1
	A176630-1	8" x 96" Vacuum Hose - Some B-15	1
	A176630-2	8" x 103" Vacuum Hose - B10/300, B10/1300	1
	A176630-5	8" x 104" Vacuum Hose - B10 s/n 29101011	1
	A176630-4	8" x 117" Vacuum Hose - B10/500, B10/1500, some B-KD	1
	A176627-124	8" x 124.5" Vacuum Hose - B12/2000	1
	A176630-7	8" x 138" Vacuum Hose - B15 s/n 20131082, 83, 84 & 85	1
	A176627-144	8" x 144" Vacuum Hose - B10/2000, some B10/2500, B15/1000	1
	A176627-152	8" x 152" Vacuum Hose - some B10/2500	1
3	A220698	8" Powerlock (Spiral Bolt) clamp	2

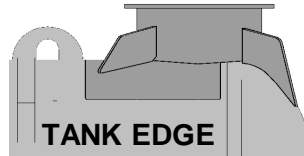
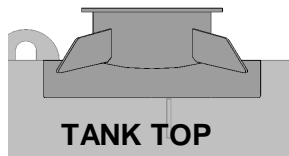
BOOM PORTAL/PEDESTAL

This is an informational bulletin providing supplemental parts information for our B-Series boom turret mounts.

The current pedestal mount is drilled to match the high capacity turret bearing bolt pattern (3/4" dia. x 24 holes). When a standard turret bearing (1/2" dia. x 12 holes) is mounted, three of the bolt spacing adapter segments (item 7) are required. They go underneath the flange.



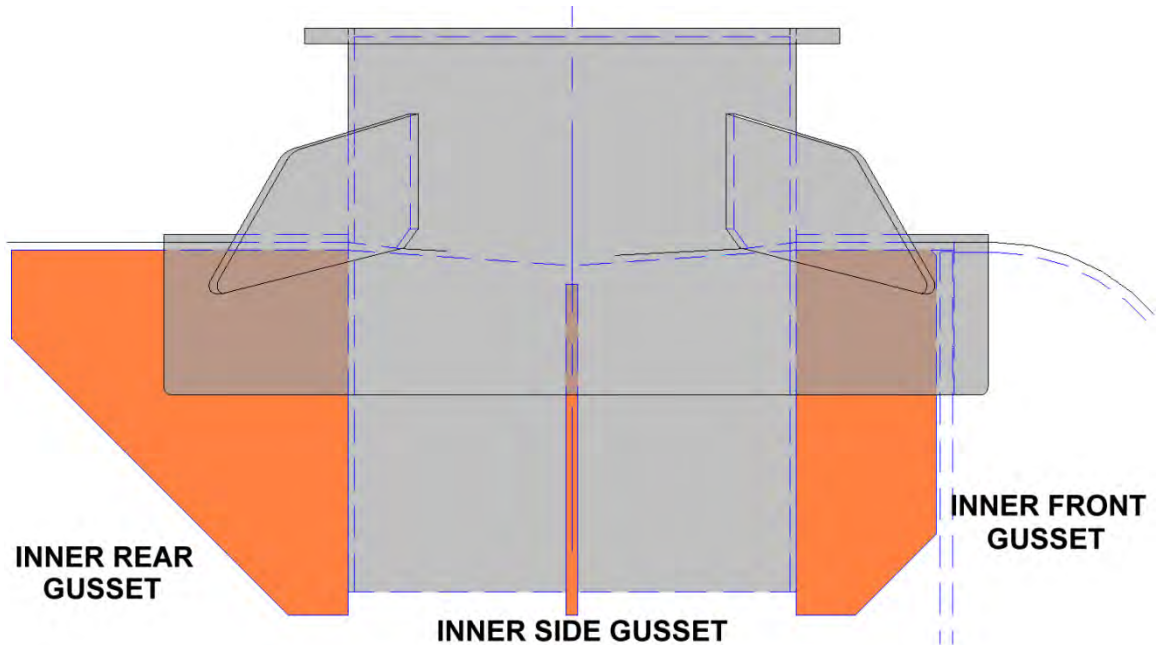
These parts are also used on our
X-VAC
 HYDRO EXCAVATOR
 A Division of Hi-Vac Corporation
 product line.



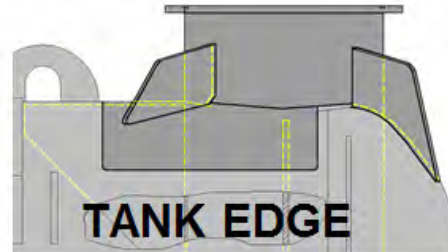
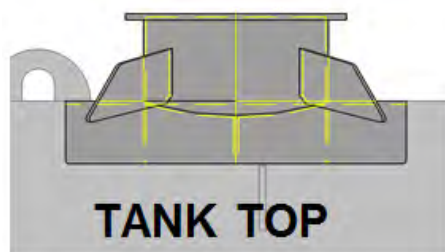
ITEM #	PART NUMBER	DESCRIPTION	QTY.
1	A190870	Gasket, Boom Mounting (Tank Flange), 12 hole, Standard	1
	A380270	Gasket, Boom Mounting (Tank Flange), 24 hole, High Capacity	1
2	A385441	Mounting Flange Only (24 Holes *)	1
2 & 4	A385442	Welded Mount Assembly (24 hole flange *)	1
3	A239800	Boom Mount Front Gusset (except tank top mounted booms)	2
4	A338512	Boom Mount Tube Only	1
5	A239630	Boom Mount Rear Gusset (4 used on tank top mounted booms)	2
6	A238185	Boom Mount Support Plate (tank edge mounted booms)	1
	A242869	Boom Mount Support Plate (tank top mounted booms)	1
7	A385456	Adapter Segment for 12 Hole Standard Capacity Turret Bearing	3

* For older units with 12 hole flange, order the A385442 24 hole flange mount assembly plus the following: 3# A385456 adapter segments, 12# A105192 bolts and 12# A107298 lock washers)

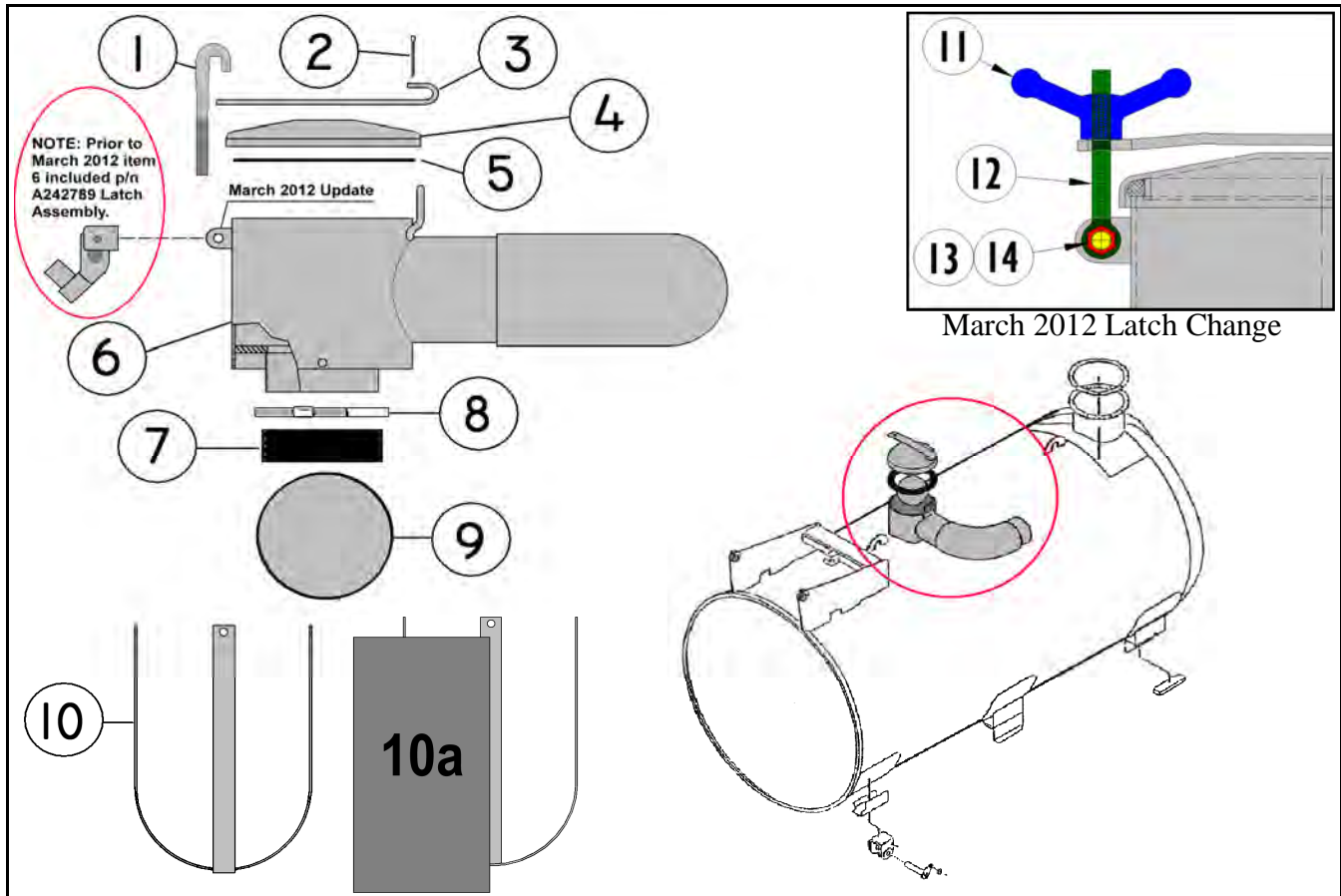
INTERNAL BOOM TUBE GUSSETS



PART NO.	DESCRIPTION	QTY. FOR TANK EDGE MOUNTED.	QTY. FOR TANK TOP MOUNTED
A238182	Inner Front Gusset	1	0
A238184	Inner Rear Gusset	1	2
A238188	Inner Side Gusset	2	2



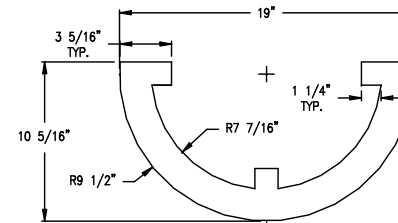
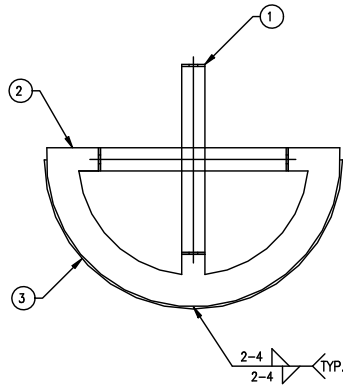
Standard Debris Tank Vacuum Air Portal



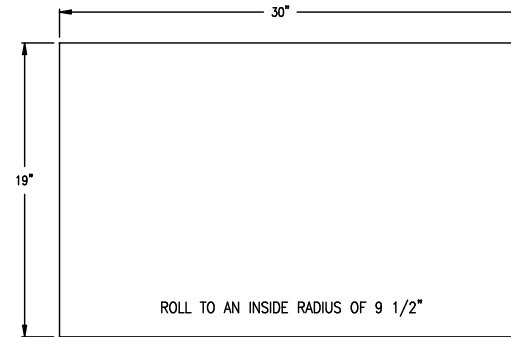
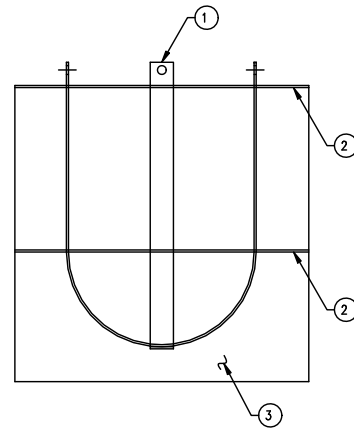
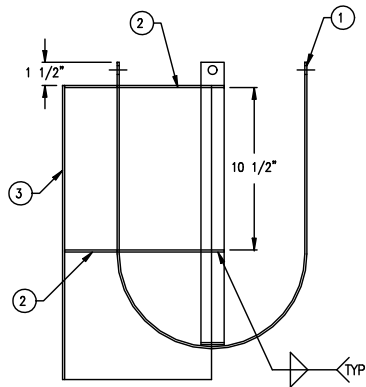
ITEM #	PART NO.	DESCRIPTION	QTY.
1	A152970	Camlock Hook (used prior to March 2012)	1
2	A102755	3/16" x 3" Cotter Pin	1
3	A154090	Spring Bar	1
4	300000259	12" Cast Portal Cover - replaces p/n A154080	1
5	300000398	Portal Cover Gasket - replaces p/n A190230	1
6	A238190 *	Air Portal Body Assembly (redesigned March 2012 for new latch)	1
7	A176290	Rubber Ball Seat	1
8	U7000-0243	Worm Gear Clamp for Ball Seat	1
9	A222005	10" Stainless Steel Float Ball (for 4500cfm & up units use A241392)	1
10	A243860	Ball Cage	1
10A	A338794	Ball Cage with 180° Cover (shield)	1
11	300000386	Hand Wheel (starting March 2012) - replaces p/n A381748	1
12	A381747	Stainless Steel Rod End (starting March 2012)	1
13	A105380	Cap Screw, 5/8"-11 x 2-1/4" (starting March 2012)	1
14	U4604-0014	Locknut, 5/8"-11 (starting March 2012)	1

* This is the most common portal assembly but variations exist, check BOM before ordering.

PART NO.: A338794		DESCRIPTION: SHIELD, AIR PORT TUBE, BOLT ON	
ITEM	PART NO.	REQ'D.	DESCRIPTION
1	243860	1	BASKET ASSEMBLY, CHECK BALL
2	U4505-0002	2	SHEET STK, 10 GA x 10 5/16" x 19" LG
3	U4505-0002	1	SHEET STK, 10 GA x 19" x 30" LG




DETAIL, ITEM #2
(2 REQ'D)



DETAIL, ITEM #3
(1 REQ'D)

DO NOT SCALE

NEXT ASSY.	 A PRODUCT OF HI-VAC CORPORATION 117 INDUSTRY ROAD MARIETTA, OHIO 45750 USA PHONE +740.374.9171 FAX +740.374.5447		
SCALE: NONE	WEIGHT:	DRAWN BY: SMW	PRODUCT CODE:
DWG SIZE: B	DATE: 08/01/07	CHECKED BY:	B-SERIES/SPL
UNLESS OTHERWISE SPECIFIED		DESCRIPTION: SHIELD WELDMENT, AIR PORT TUBE, BOLT-ON	
✓ =125 MICRINCHES BREAK ALL EDGES FABRICATION TOL. ± 1/16" ANGULAR ± 1°	MACHINING TOLERANCES FRACTIONAL ± .015 DECIMAL ± .010 XXX ± .005	MATERIAL: SEE B.O.M.	PART NUMBER: 338794
THIS DOCUMENT IS THE PROPERTY OF HI-VAC, CORP. AND IS FURNISHED FOR AUTHORIZED USE ONLY. NEITHER THIS DOCUMENT NOR THE INFORMATION DISCLOSED HEREIN SHALL BE COPIED, REPRODUCED, TRANSFERRED OR USED FOR MANUFACTURING OR FOR ANY OTHER PURPOSE EXCEPT AS AUTHORIZED IN WRITING BY HI-VAC, CORP.		RAW MAT'L: -	REV: -



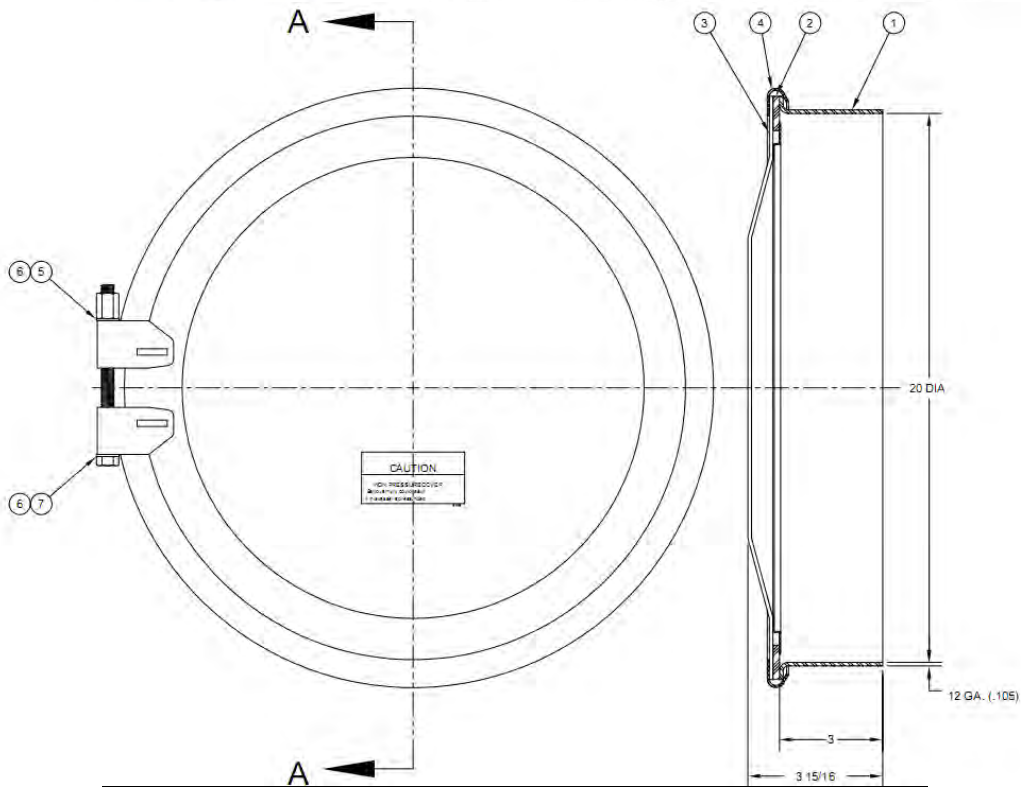
A154085

20" Inspection Manhole

Used on models SJR2000, SJR2500, B10/2000, B10/2500 and B15/1000



Pictured with A388294 2" half-nipple welded on, unknown adapter & A100016 2" Breather.

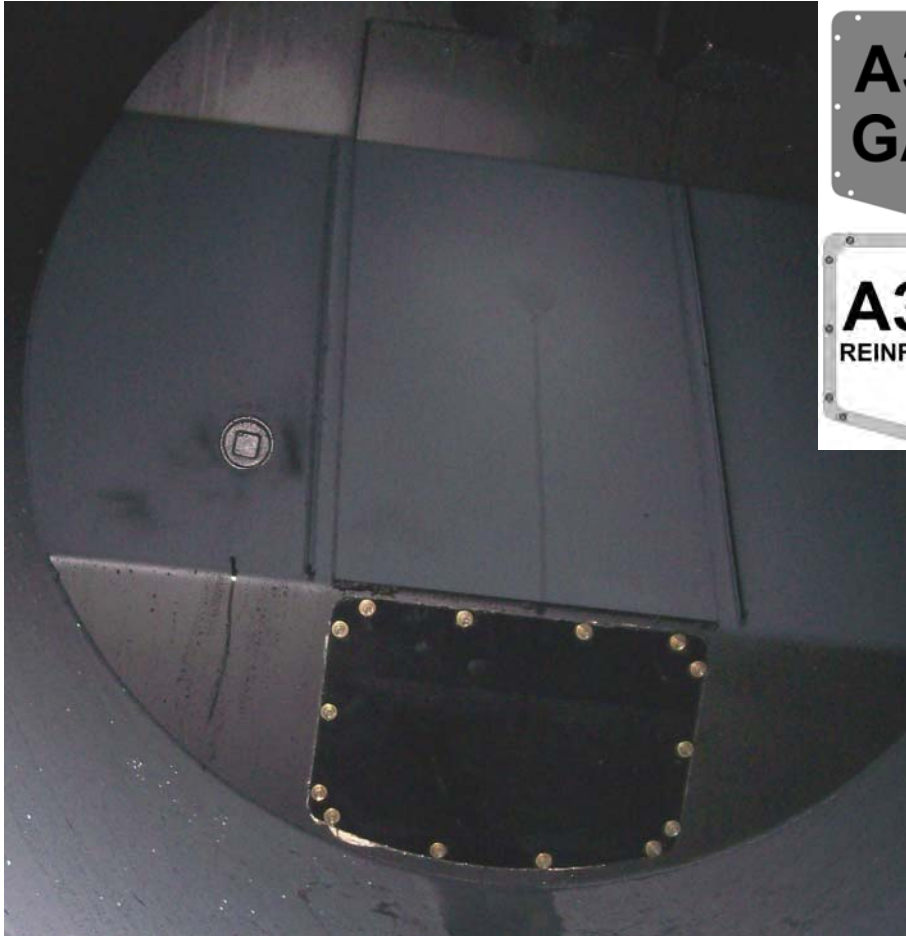


ITEM	PART NO.	DESCRIPTION
1	TBA	Portal Weld Ring
2	A154088	Gasket
3	A154087	Lid
4	A154085-RING	Clamp Ring
5	TBA	Brass Nut, Pinch Bolt
6	TBA	Washer, Pinch Bolt
7	TBA	Pinch Bolt



SECTIONED DEBRIS/WATER TANK

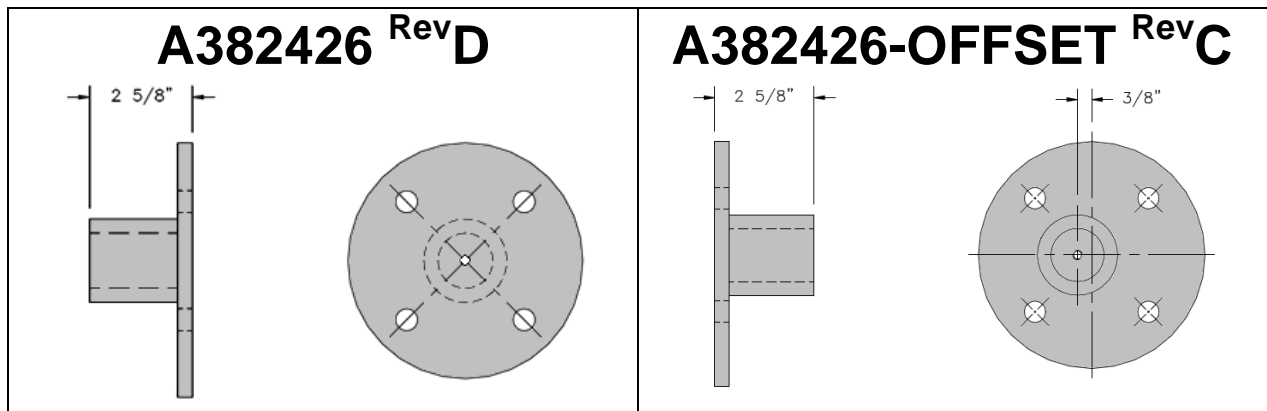
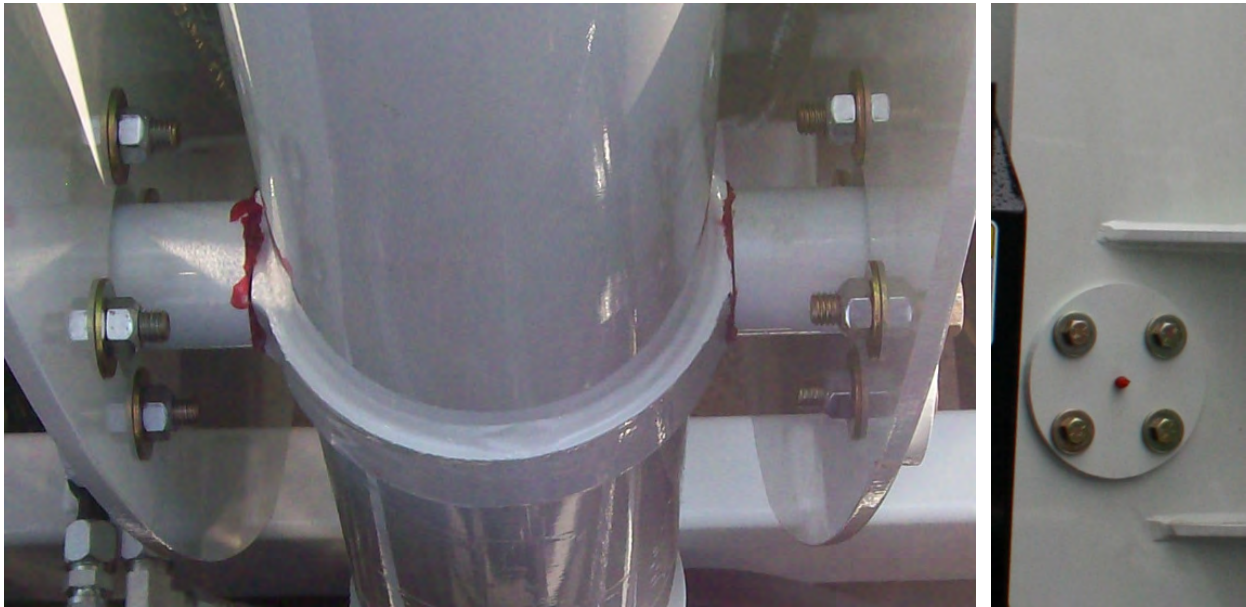
Used on B6/1500, B7, B7/1500, B10/300, B10/500, B10/1000, B10/1300, B10/1500, B10/2000, B10/2500, B12/2000 & B52



QTY	PART NO.	DESCRIPTION
1	A338441	COVER PLATE
1	A338442 Rev B	GASKET
1	A338443	REINFORCEMENT RING
14	A104452	BOLT, 3/8"-16 x 3/4"L, HEX HEAD, SS

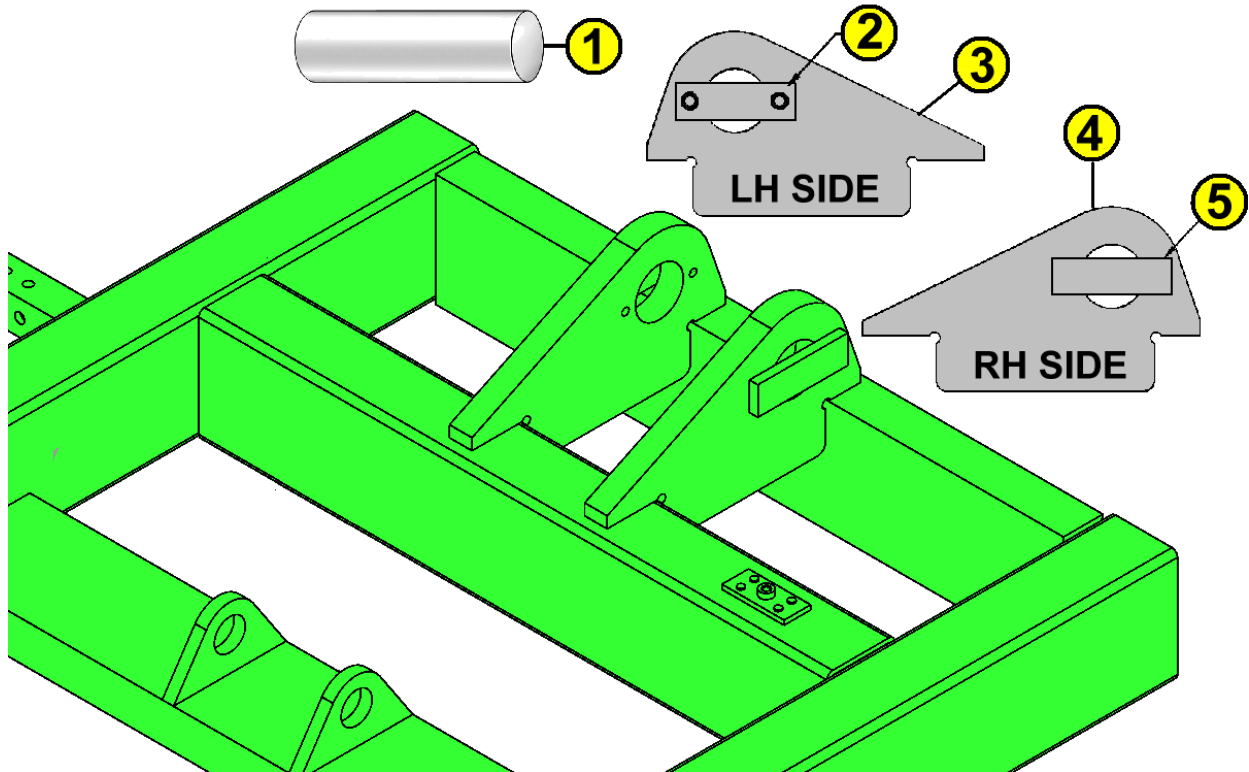


LIFT CYLINDER TRUNNION MOUNTING HUB



NOTE: For information on the lift cylinder, please see the hydraulics section.

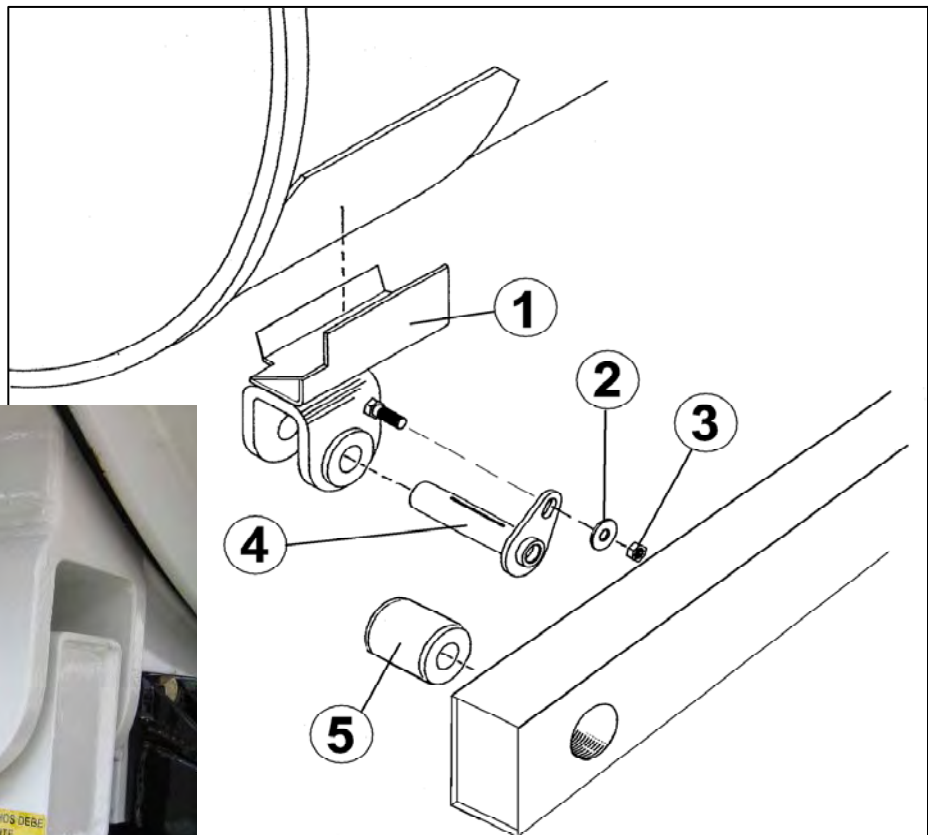
DEBRIS TANK TIPPING CYLINDER MOUNT



ITEM	PART NO.	DESCRIPTION	QTY
1	A249876	Pin, Debris Tank Tipping Cylinder	1
2	121005056 A	Plate, Pin Retainer, Bolt-On	1
3	121005054 A	LH Tipping Cylinder Mount	1
4	121005053 A	RH Tipping Cylinder Mount	1
5	121005055 A	Plate, Pin Retainer, Weld-On	1

TANK TIPPING HINGE

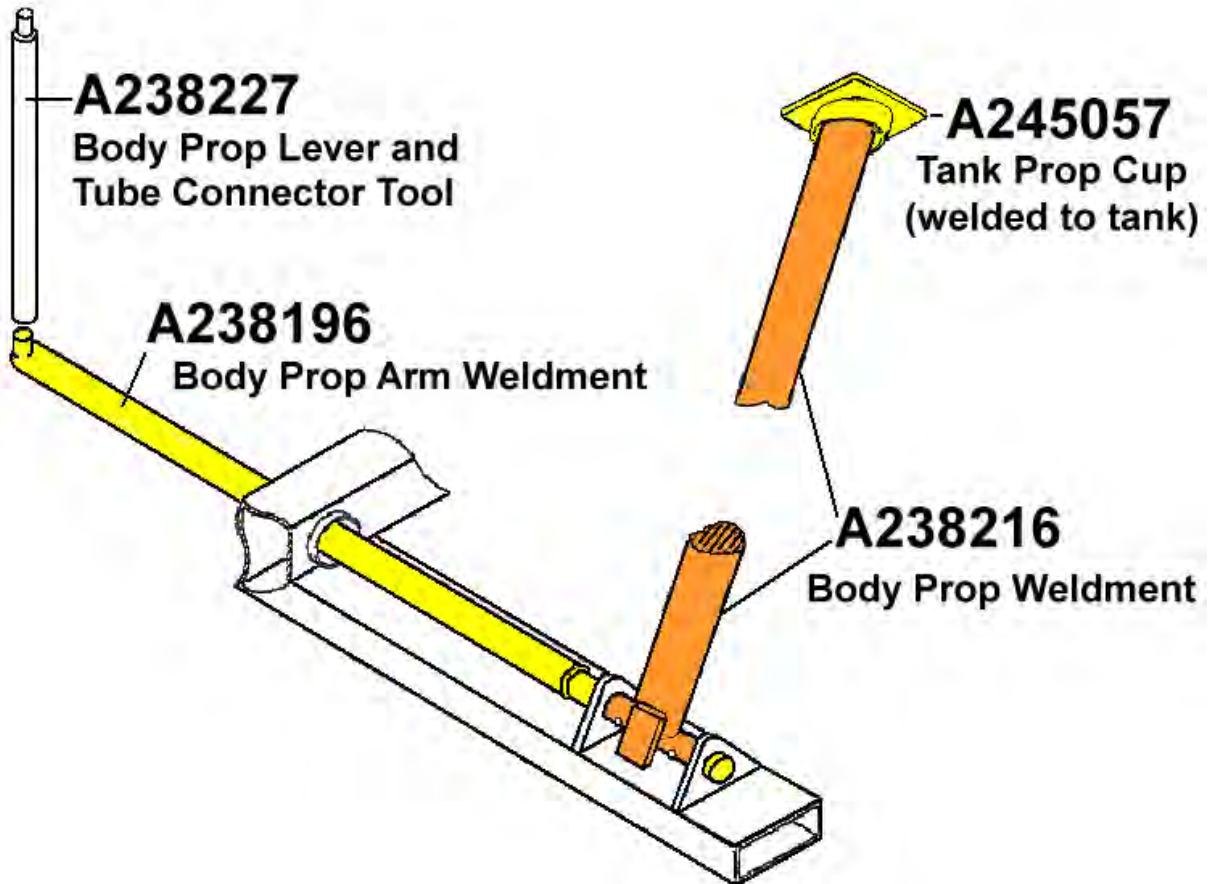
For your convenience, here is a parts listing for the tank hinge components on our Aquatech B-series machines. They are also used on X-Vac trucks and Ultravac Dry Vac units.



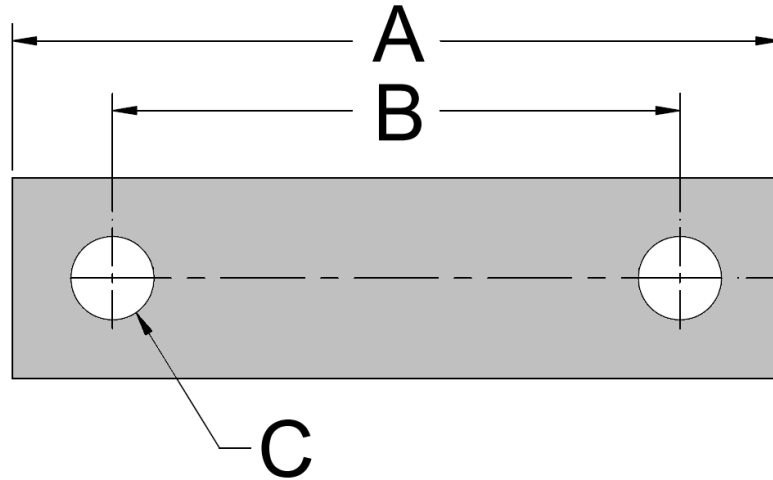
ITEM	PART NUMBER	DESCRIPTION
1	A243794	Tank Hinge Assembly - RH
	A243795	Tank Hinge Assembly - LH
2	A107234	5/8" Plated Washer
3	A107024	5/8"-11 Lock Nut
4	A153730	Hinge Pin Assembly
5	A241081	Tank Pivot Bushing (Rear Trunnion) - Up to Sept. 2014
	A385434	Tank Pivot Bushing (Rear Trunnion) - After Sept. 2014 *

* The ID was tightened up (1.515" vs 1.530") and the material was changed to make it softer than the pin that goes through it. This was done to tighten up the tolerance and so that the bushing will wear before the pin does. The newer bushing can be used in place of the older. NOTE: The tipping pins should be greased (1 to 2 shots) monthly.

HINGED TANK SUPPORT PROP



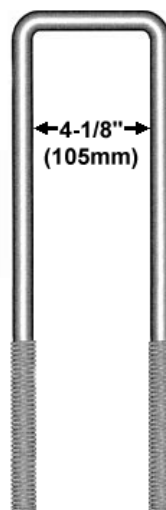
FRAME TIE BARS AND STUDS



TIE BAR PART NO.	TIE BAR DIMENSIONS					
	"A"		"B"		"C"	
	INCH	MM	INCH	MM	INCH	MM
A221710-03	5.06	128.59	3.81	96.84	.688	17.48
A221710	5.75	146.05	4.25	107.95	.625	15.88
A221710-01	6.25	133.35	5.00	127.00	.688	17.48
A221710-02	6.75	171.45	5.00	127.00	.688	17.48

5/8"-18 MOUNTING STUDS

PART NO.	LENGTH	
	INCH	MM
A222210	12	304.80
A222215	15	381.00
A222220	16	406.40
A222221	19	482.60
A222222	22	558.80
A222223	25	635.00
A222226	26	660.40
A222224	29	736.60



5/8"-18 SQUARE BEND U-BOLTS

PART NO.	LENGTH	
	INCH	MM
U4607-0225	19.5	495.30
A222227	25.5	647.70

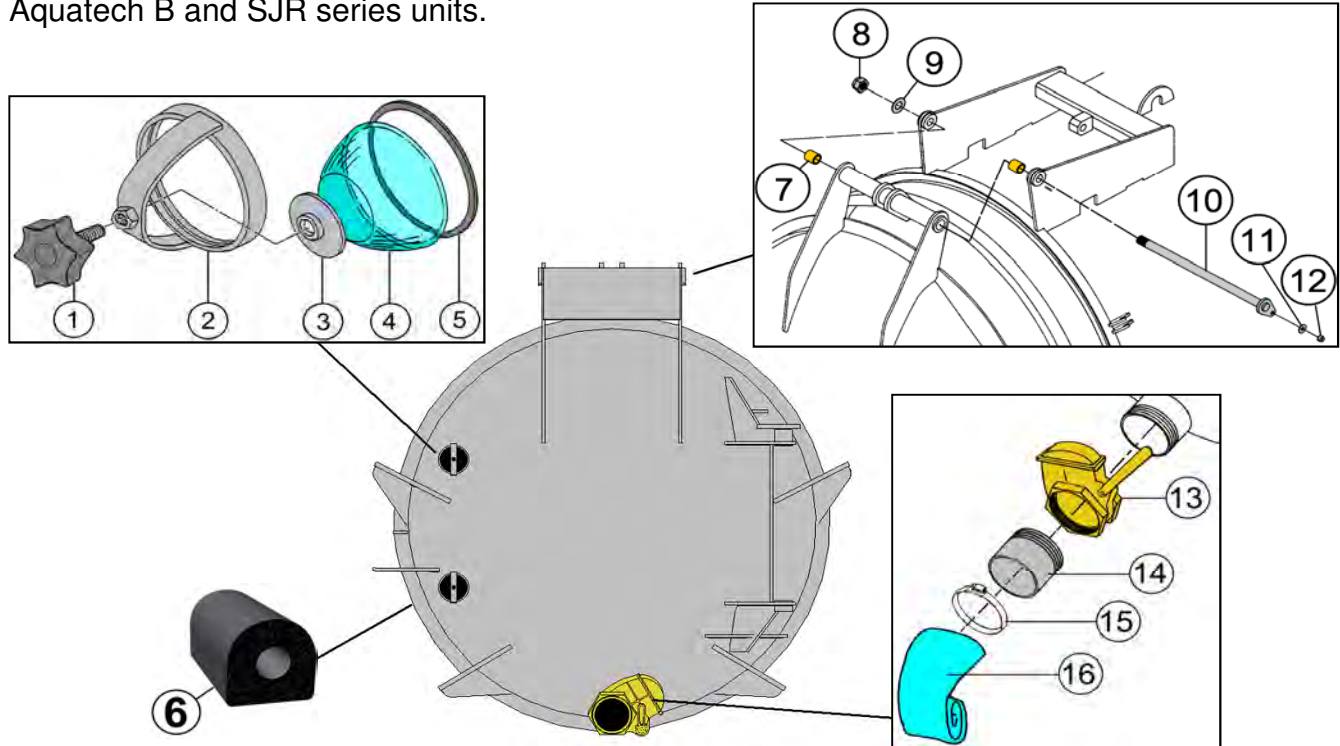
AQUATECH[®]

PARTS BULLETIN

Bulletin No. AQPB-141
 Issued: 09/03/08 by RR - Revised 12/31/18
 Subject: B-Series Rear Door
 File In Debris Tank Section

COMMON DEBRIS TANK REAR DOOR COMPONENTS

This bulletin provides parts information for common components used on the rear door of our Aquatech B and SJR series units.

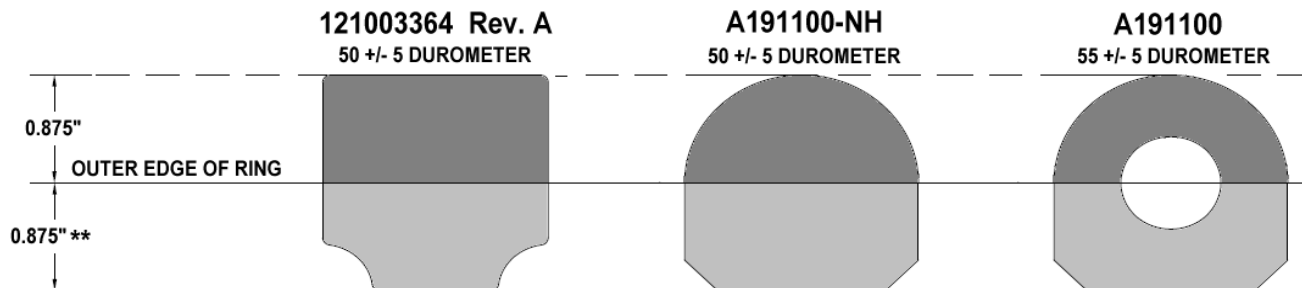


ITEM	QTY.	PART NO.	DESCRIPTION
1.	2	A153013	Hand Wheel
2.	2	A153000	Sight-eye Frame
3.	2	A153014	Pressure Pad
4.	2	A152890	Sighteye Glass
5.	2	A153012	Rubber Sight-eye Gasket
6.	1	121003364 A	Rear Door Gasket, 18.5'L (replaces A191100 & A191100-NH)
7.	2	A162924	Sleeve Bearing (Bushing)
8.	1	A107032	1½"-12 Castle Nut (uses 3/16" x 3" cotter pin)
9.	1	A107267	Washer
10.	1	A240683	Hinge Pin Assembly
11.	1	A107234	5/8" Washer
12.	1	A107024	5/8" Ny-Lock Nut
13.	1	A246115	6" Lever Style Gate Valve
14.	1	02-1019 B	6" Hose Shank Nipple
15.	1	A220627	Worm Gear Clamp
16.	15'	A176086	6" Lay-Flat Hose

REAR DOOR GASKET IMPROVEMENT

New rear door seal part number 121003364 (Rev. A) was introduced in late 2017 that replaces part numbers A191100 and A191100-NH. This is a product enhancement to alleviate some problems inherent in the older designs. The new gasket is 0.16" narrower in overall width and features a flat sealing face. The following benefits are achieved:

- Wider sealing face to ensure a complete seal.
- Narrower design prevents adhesives from being trapped and forming pockets under the seal causing the sealing surface to be uneven. The gasket is assured to be fully seated in the channel if the recommended installation procedures are followed.
- Improved bonding of the door seal by eliminating air pockets. Radiused bottom corners gives ample room for adhesive and increased bonding surface area.
- The reduced width also alleviates the need to pound the gasket into the channel, reducing the chance of damage to the seal face from repeatedly striking it with a mallet.



**THIS DIMENSION IS THE SAME FOR BOTH STANDARD AND HEAVY DUTY RINGS

See parts bulletin AQP-B-166 for information and instructions on the adhesive used to bond this seal into the door channel.

REAR DOOR GASKET ADHESIVE

Due to feedback from the field as to how difficult it is to remove remnants of the old gasket and adhesive when replacing the rear door gasket, we have change the adhesive we use. Instead of the two part epoxy, we are now using a 3M product designed specifically for bonding rubber gaskets to metal surfaces. Two tubes are required per door gasket.



PART NO. 121002892 REV A

DIRECTIONS FOR USE

- Thoroughly clean surfaces to be bonded. Wiping with an surface prep cleaner will aid in removing oil and dirt (3M suggests their General Purpose Adhesive Cleaner - P.N. 08984).
 - Apply a thin uniform coat of adhesive on each surface but do not close the bond.
 - Allow adhesive to dry until tacky but will not transfer to your knuckle when touched (maximum dry time about 4 minutes).
 - Assemble materials with sufficient pressure to ensure contact
 - Greater initial strength may be obtained by reactivation. To reactivate, coat both surfaces with adhesive and allow to dry tack free. Lightly coat surface with at thin coat of adhesive (or lightly wipe with 3M General Purpose Adhesive Cleaner). Finish making the bond within 30 seconds.
- At 70°F, Super Weatherstrip Adhesive will have some bond strength within 1-2 hours and have full cure within 24 hours.

The items below are no longer used in production and are available by special order only.

 <p>U4607-0303 Resin/Hardener Cartridge</p>	 <p>U4607-0301 Mixer Tip</p>	 <p>U4607-0304 Applicator Gun</p>
--	---	--

AQUATECH®

6" LAYFLAT HOSE REAR DOOR HOOK UP OPTIONS

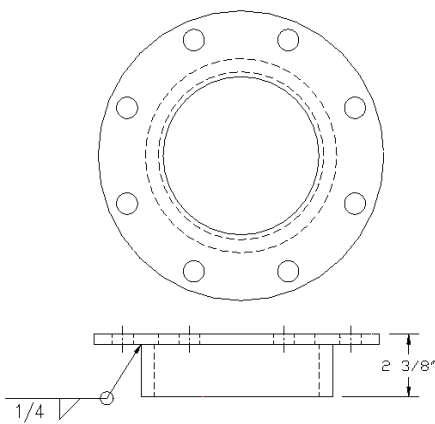
PHOTO	ADAPTER	LAYFLAT HOSE
 <p data-bbox="175 777 646 808">02-1019 Rev B - 6" Hose Shank Adapter</p>	<p data-bbox="779 546 1031 577">No Adapter Required</p>	
 <p data-bbox="162 1270 657 1302">A170375 - 6"MNPT X 6" Male AQ Coupler</p>	 <p data-bbox="690 1197 1112 1291">A171130-MFD - 6" Female AQ Coupler X 6" Hose Shank Adapter & A190760 - O-Ring</p>	<p data-bbox="1185 840 1404 871"><u>6" LAYFLAT HOSE</u></p> <p data-bbox="1193 913 1396 1018">A176086 15' Long (priced per foot)</p> <p data-bbox="1185 1050 1404 1155">A176086-20 20' Long (priced per length)</p> <p data-bbox="1185 1186 1404 1291">A176086-11 25' Long (priced per length)</p>
 <p data-bbox="170 1753 641 1827">10-0206 - 6"FNPT X 6" Male Camlock & U4402-0289 - 6" Sch40 Close Nipple</p>	 <p data-bbox="690 1753 1112 1827">10-0214 - 6" Female Camlock & 02-1019 Rev B - Hose Shank Adapter</p>	 <p data-bbox="1185 1533 1404 1606">08-0519 T-Bolt Hose Clamp</p>



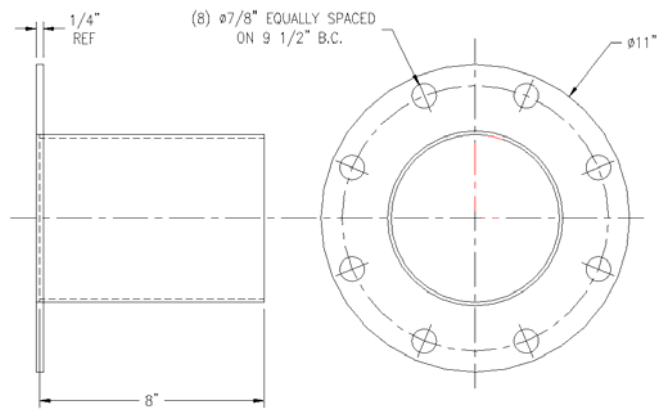
6" MANUAL BUTTERFLY VALVE



- 1# A338426 FLANGE WELDMENT FOR BUTTERFLY VALVE
- 1# U4307-0008 6" BUTTERFLY VALVE, HAND LEVER ACTUATOR
- 1# U1007-4147 ADAPTER, 6" FLANGE TO 6" TUBE



A338426



U1007-4147



STYLE 1



STYLE2

A338747 * FLUSH, 6" REAR DRAIN, 1"HOSE CONNECTION

Level	Part Number	Description	Qty	U/M	SC
1	A338746 (style 1)	WELDMNT,6" HOSE ADAPTER W/DRA	1	EA	M
1	A133110	ELBOW,PIPE,90D,STREET,1",L	1	EA	P
1	A130901	VALVE,BALL,1",2000PSI	1	EA	P
1	A130780	ADAPTER,ELBOW,45D,1MNPT X 1FNP	1	EA	P

A338747-1 * FLUSH, 6" REAR DRAIN, 1-1/4"HOSE CONNECTION

Level	Part Number	Description	Qty	U/M	SC
1	A338746-1 (style 2)	ADAPTER,HOSE,6",1 1/4" FLUSH C	1	EA	M
1	A100188	VALVE,BALL, 1 1/4" 3000 PSI	1	EA	P
1	A243338	1-1/4 PIPE NIPPLE,CLOSE,SCH.40	1	EA	P
1	A100187	ADAPTER,EL,90D,1.25MNPTx1.25FN	1	EA	P

A338747-2 * FLUSH, 6" REAR DRAIN, 1"HOSE CONNECTION

Level	Part Number	Description	Qty	U/M	SC
1	A338746-2 (style 2)	ADAPTER,6"NPT,1" FLUSH CONNECT	1	EA	M
1	A130901	VALVE,BALL,1",2000PSI	1	EA	P
1	A130780	ADAPTER,ELBOW,45D,1MNPT X 1FNP	1	EA	P

A338747-3 * FLUSH, 6" REAR DRAIN, 3/4"HOSE CONNECTION

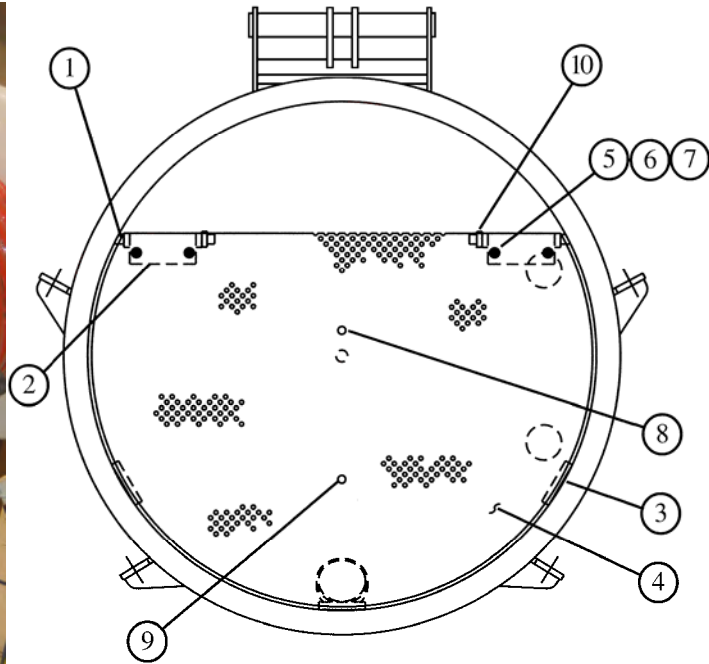
Level	Part Number	Description	Qty	U/M	SC
1	A338746 (style 1)	WELDMNT,6" HOSE ADAPTER W/DRA	1	EA	M
1	A133110	ELBOW,PIPE,90D,STREET,1",L	1	EA	P
1	A130901	VALVE,BALL,1",2000PSI	1	EA	P
1	A130752	ADAPTER,SWIVEL,3/4"FNPTS X 1"M	1	EA	P

A338747-4 * FLUSH,6" REAR DRAIN, 3/4"HOSE CON., 3000 PSI

Level	Part Number	Description	Qty	U/M	SC
1	A338746-2 (style 2)	ADAPTER,6"NPT,1" FLUSH CONNECT	1	EA	M
1	A130903	VALVE,BALL,1",3000 PSI W/S.S.	1	EA	P
1	A130780	ADAPTER,ELBOW,45D,1MNPT X 1FNP	1	EA	P
1	A130752	ADAPTER,SWIVEL,3/4"FNPTS X 1"M	1	EA	P

A246410

HINGED REAR DOOR STRAINER

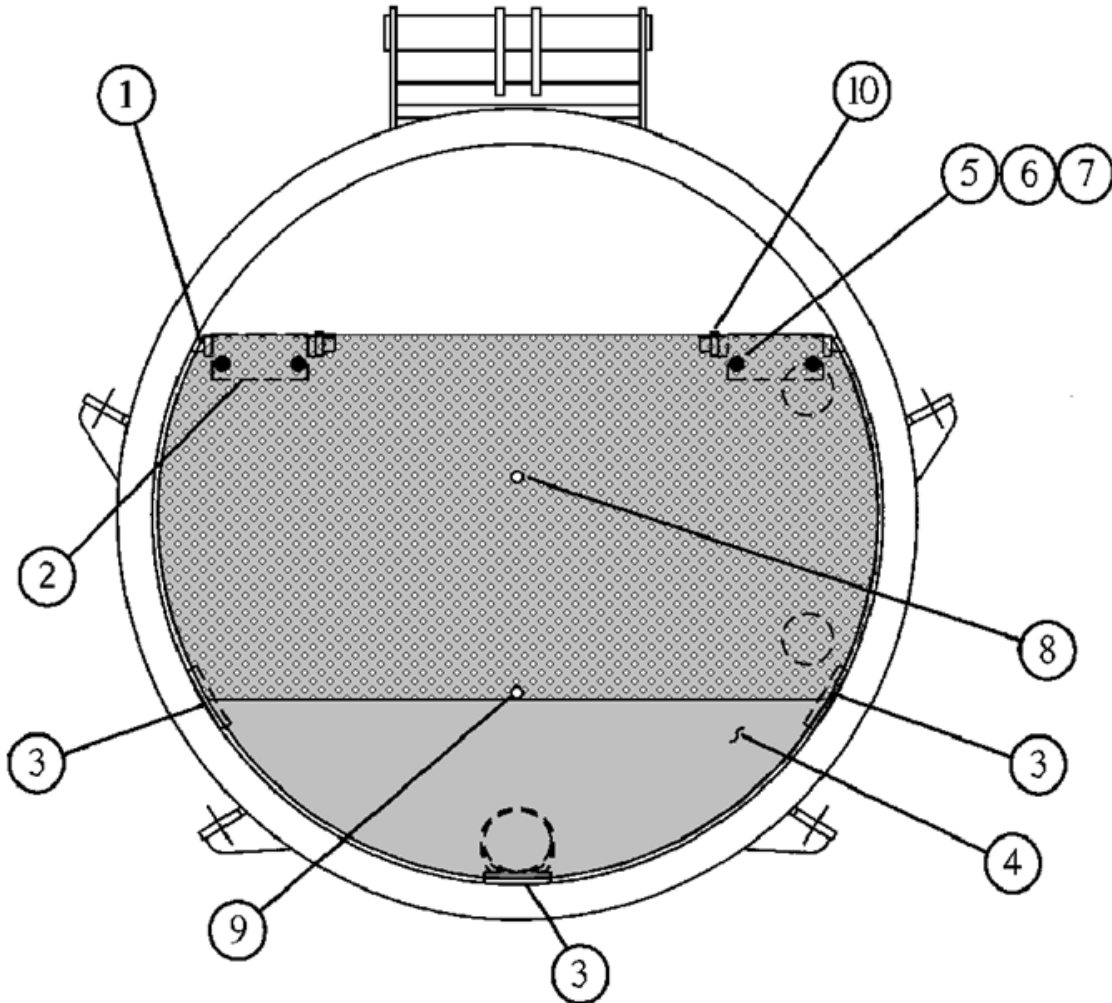


ITEM	PART NO.	DESCRIPTION	QTY
1	A246413	Hinge Shaft	2
2	A246414	Hinge Weldment	2
3	300001036 *	Strainer Plate Stop	3
4	A246411	Strainer Plate	1
5	A105176	1/2"-13 x 1 1/2 Hex Screw, G8 Plated	4
6	A107020	1/2"-13 Nylock Nut, G8 Plated	4
7	A107226	1/2"USS Flat Washer, G8 Plated	8
8	A246417	Upper Stand-Off	1
9	A246418	Lower Stand-Off	1
10	A160406	1 1/4" Solid Shaft Collar	2

* Replaces p/n A246412

A246410-5

HINGED REAR DOOR STRAINER WITH SOLID BOTTOM



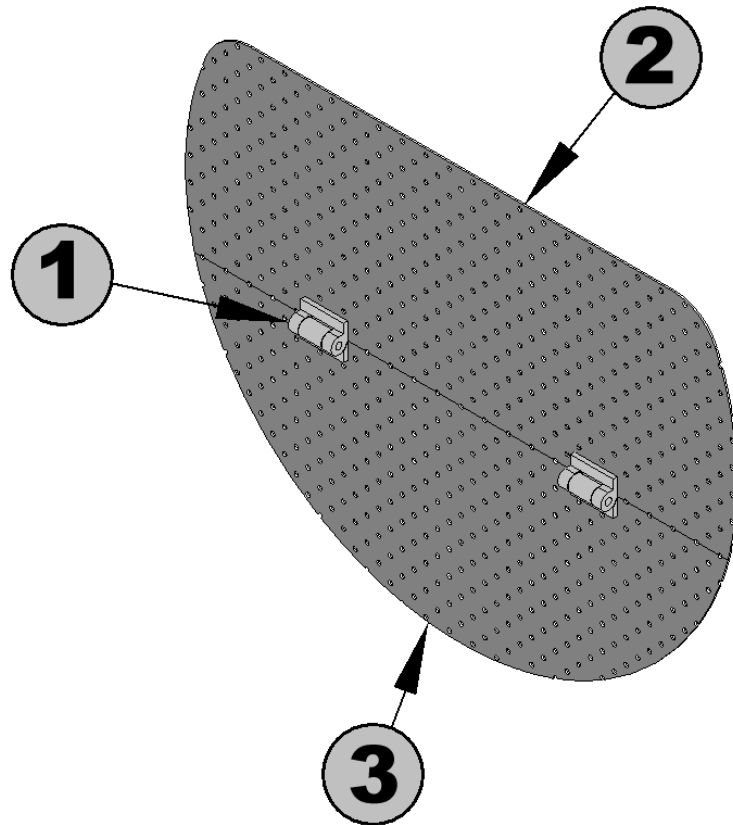
ITEM	PART NO.	DESCRIPTION	QTY
1	A246413	Hinge Shaft	2
2	A246414	Hinge Weldment	2
3	300001036 *	Strainer Plate Stop	3
4	A246411-5	Strainer Plate	1
5	A105176	1/2"-13 x 1 1/2 Hex Screw, G8 Plated	4
6	A107020	1/2"-13 Nylock Nut, G8 Plated	4
7	A107226	1/2"USS Flat Washer, G8 Plated	8
8	A246417	Upper Stand-Off	1
9	A246418	Lower Stand-Off	1
10	A160406	1 1/4" Solid Shaft Collar	2

* Replaces p/n A246412



FOLDING REAR DOOR STRAINER SCREEN

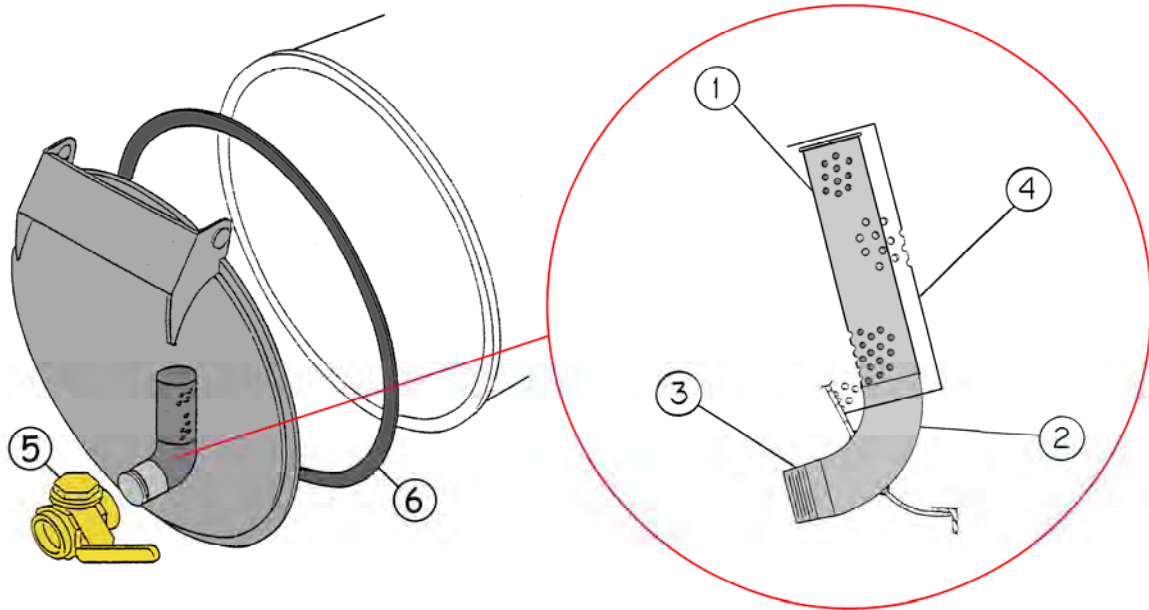
p/n **121001763** rev. A



1	A384795	Hinge
2	121001764 rev A	Strainer Top Half
3	121001765 rev A	Strainer Bottom Half



B-SERIES OLD STYLE REAR DOOR STRAINERS

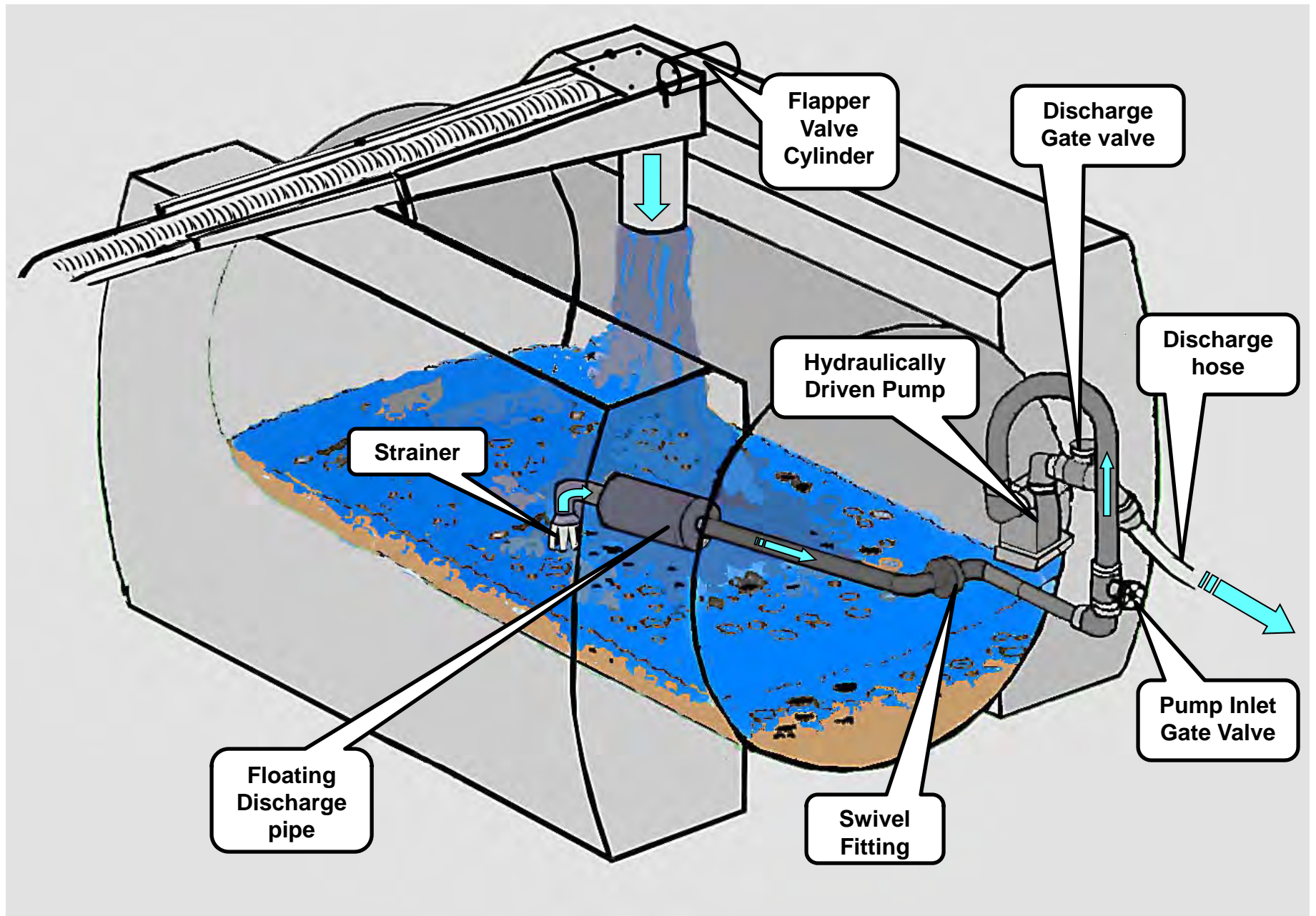


Two sizes were used before the hinged plate design was introduced in the late 1990s.
 NOTE: Components are welded together when assembled therefore old components will have to be cut apart with a cutting torch or metal saw.

ITEM	DESCRIPTION	4" PART NO.	6" PART NO.
1 & 2	Strainer & Elbow Assembly	A222502	A238502
1	Perforated Strainer Tube w/Top Plate	A238019	A270226
2	Elbow only	A245636	A222503
3	Half Nipple only	A141340	A142925
4	Perforated Strainer Wrapper	A238501	A238507
5	Gate Valve, Lever Style	A150725	A246115
6	Rear Door Gasket	121003364 Rev A <i>(replaces A191100)</i>	

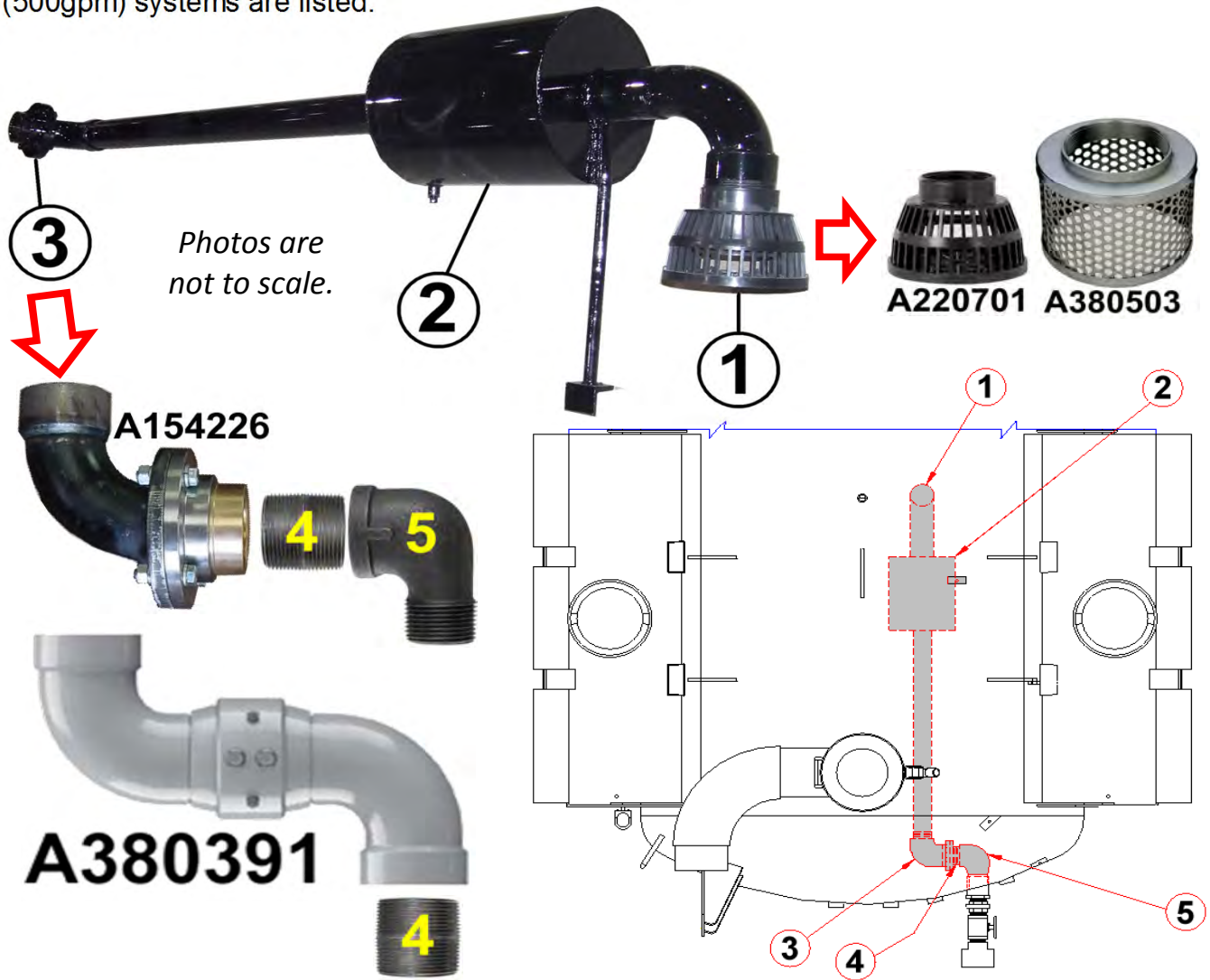
Revised 3/13/2018

OPTIONAL WASTE WATER PUMP-OFF SYSTEM



PUMP-OFF SYSTEM TANK COMPONENTS

For your convenience, here is a parts listing for the internal components of the optional debris tank pump-off system. Components for both the 2-1/2" (210 & 300gpm) and 4" (500gpm) systems are listed.



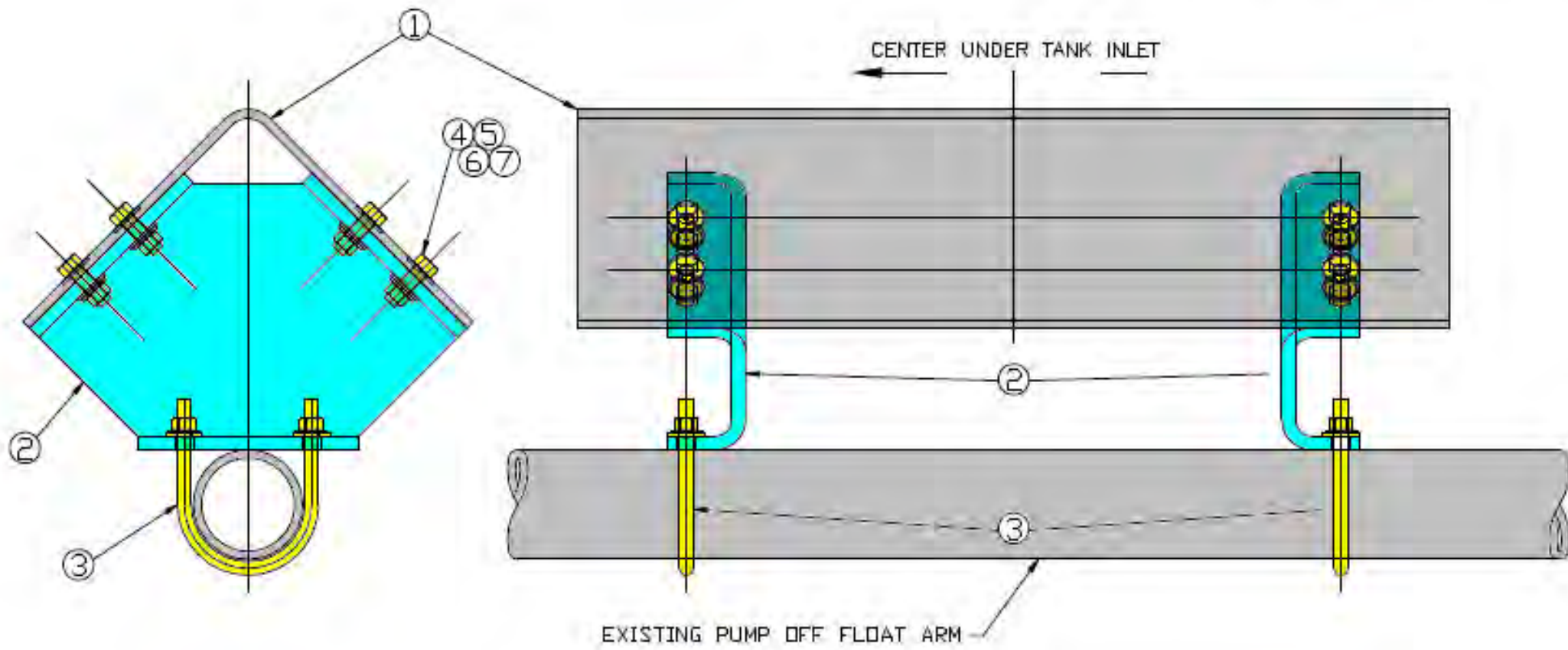
ITEM	2-1/2"NPT PART NO.	4"NPT PART NO.	DESCRIPTION
1	A220701	A380503	Inlet Strainer
2	A238399 *	A380384	Floating Suction Arm
3	A154226	A380391	90° Swivel Elbow Assembly
4	02-0356	A141342	Close Nipple
5	A142000 **	N/R	90° Street Elbow

* As of April 2019 OAL changed from 72.5" to 54" - also replaces A238399-01 that's was 64.5" OAL

** Later models use 02-0017 Pipe Elbow and another 02-0356 Close Nipple

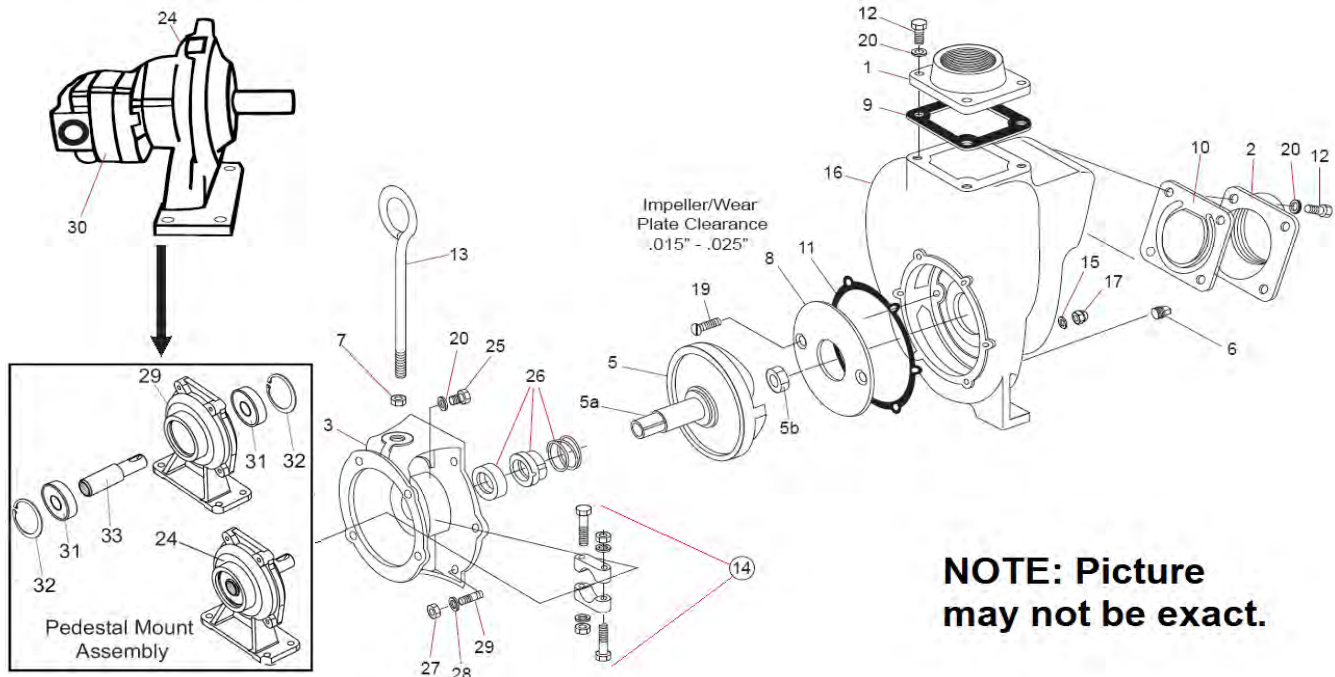
A238399-COVER

OPTIONAL DEFLECTOR FOR FLOAT ARM



CAST IRON CENTRIFUGAL PUMPS

For your convenience, here is a parts listing for the centrifugal pumps we use to decant the debris tanks on units equipped with an optional pump-off system.



NOTE: Picture may not be exact.

ITEM NO.	PART DESCRIPTION	FLOMAX 8 2" - 140 GPM	FLOMAX 10 2" - 210 GPM	FLOMAX 15 3" - 300 GPM
ASSY	Pump Assembly with OE Hyd. Motor	A382718	A216421	A100168
ASSY	Pump Assembly w/Installed Hyd. Motor	--	A381608 & A381609	A383068
ASSY	Pump Assembly w/o Hydraulic Motor	--	A381609	A381702
ASSY	Pump Assembly with Electric Clutch	--	--	A216422
1	Outlet Flange	A382718-22311	TBA	TBA
2	Inlet Flange	TBA	A216421-3	A216422-22468
5	Impeller & Shaft	TBA	A216422-23038	A216422-23038
8	Steel Wear Plate Kit w/Mtg. Hardware	TBA	A216422-22376	A216422-22376
9	Outlet Flange Gasket - BUNA	A382718-22256	A216422-22358	A216422-22358
10	Flapper Assembly - BUNA	TBA	A216421-23040	A216421-23040
11	Impeller Housing Gasket	TBA	A216421-4	A216421-4
14	Clamp Assembly	TBA	A216421-23039	A216421-23039
15	Annular Gasket	TBA	A216422-21271	A216422-21271
16	Pump Housing, Cast Iron	TBA	A216421-23035	A216421-23035
24	Pedestal Assembly for Hydraulic Motor	TBA	A216421-25772	A216421-25772
n.i.	Ball Bearings for Pedestal	TBA	A216422-25474 (2)	A216422-25474 (2)
26	Seal Assembly, Viton	TBA	A216421-2	A216421-2
30	Hydraulic Motor	TBA	A381608	A381608

NOTE: For item numbers that are not shown, the part number is TBA (To Be Announced)

AQUATECH 500GPM PUMP-OFF SYSTEMS



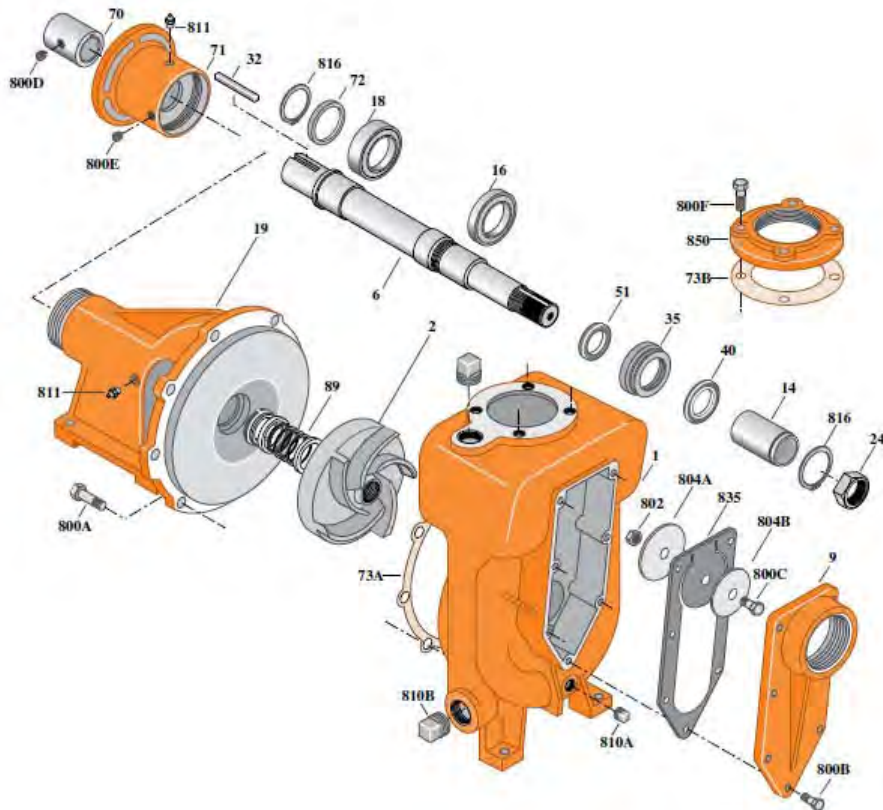
- A380383 OBS*PUMP OFF,B SERIES,500 GPM***
- A380383-1 OBS*PUMP-OFF,500GPM,B10/1500 (OLD MOUNT)
- A380383-2 PUMP-OFF,500GPM,B15 W/AUTO LEVEL WIND
- A380383-3 PUMP-OFF,500GPM,B10
- A380383-4 PUMP-OFF,500GPM,B15
- A380383-5 PUMP-OFF,500GPM,B10,BALLVALVE,4"CAM
- A380383-6 PUMP OFF,500GPM,B10,BALLVALVE,4"CAM
- A380383-7 PUMP-OFF,500GPM,B10/1500 (NEW MOUNT)
- A380383-7-12V PUMP-OFF,500GPM,B10/1500,12V SOL.VLV
- A380383-26003 PUMP-OFF,500GPM W/400' LAYFLAT

A381826 SUB ASSEMBLY,PUMP,500GPM,PUMP-OFF

Lvl	Part No	Description	Qty	UM	SC
1	A141342	NIPPLE,CLOSE,4" NPT	1	EA	P
1	A150725	GATE VALVE,4"FNPT LEVER STYLE,	1	EA	P
1	A170281	4" HOSE ADAPTER ASSEMBLY	1	EA	M
1	A380394	NIPPLE,KING,4"MNPT X 4"HOSE BA	1	EA	P
1	A381823	PUMP,CENTRIFUGAL,4" 500GPM,HYD	1	EA	P
1	A381824	MOTOR,HYDRAULIC,BI-ROTATIONAL	1	EA	P
1	02-1978	ELBOW,PIPE,90D,4"NPT,STREET,15	2	EA	P

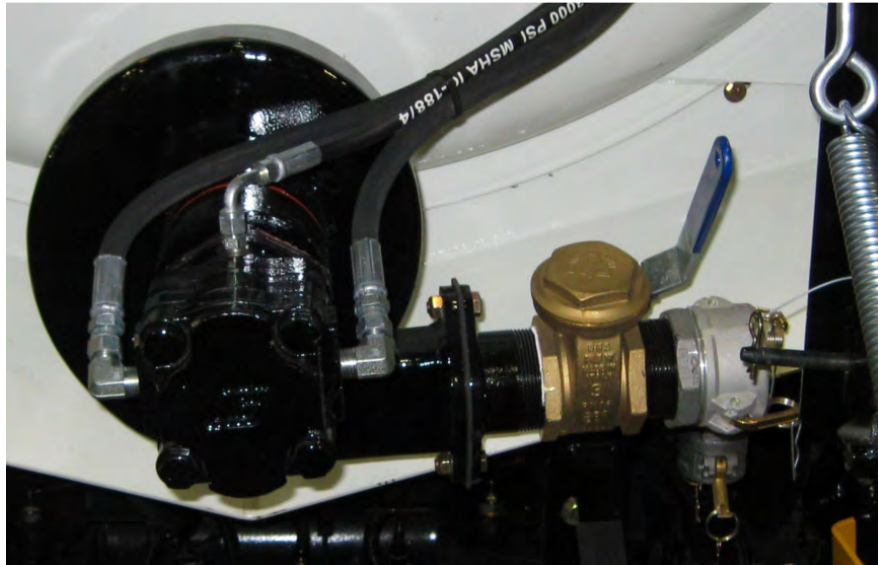
A381826-1 SUB-ASSY,PUMP,500 GPM PUMP OFF,BALL VALVE

Lvl	Part No	Description	Qty	UM	SC
1	A141342	NIPPLE,CLOSE,4" NPT	1	EA	P
1	A380394	NIPPLE,KING,4"MNPT X 4"HOSE BA	1	EA	P
1	A381823	PUMP,CENTRIFUGAL,4" 500GPM,HYD	1	EA	P
1	A381824	MOTOR,HYDRAULIC,BI-ROTATIONAL	1	EA	P
1	A382094	VALVE,BALL,4",BRASS,NPT	1	EA	P
1	02-1978	ELBOW,PIPE,90D,4"NPT,STREET,15	2	EA	P
1	02-2202	NIPPLE,SCH40,4"NOM,4"LONG,CS,T	2	EA	P
1	02-4633	ELBOW,PIPE,45D,4", FNPT	1	EA	P
1	U7000-0203	CAMLOCK,4" MALE X 4"MNPT,TYPE	1	EA	P



A381339-3-12V^{rev} B

SLUDGE PUMP-OFF OPTION



Part Number		Description	Qty.
A381864	A	BRACKET,HOSE CLAMP	1
A176084		HOSE, DISCHARGE, LAY FLAT - 3"	1
A220625		CLAMP,HOSE-3.063" TO 4",#56SS,	2
A150710		GATE VALVE,LEVER TYPE-3"FNPT	1
A165806		FITTING,ELBOW,90D- 5/8"MSAE X	1
A165803		FITTING,ELBOW,90D- 5/8" MJIC X	1
A135340		FITTING,ELBOW,90D- 1/2" MNPT X	6
A249056		PUMP, CENTRIFUGAL - GULF ATLAN	1
A380018		FLANGE ASSEMBLY-3"MNPT	1
A381337		GASKET,DISCHARGE PUMP,GASKETS	1
A381343		DISCHARGE, ELBOW - 3"	1
A381336		GASKET,SUCTION PUMP-1/8",NEOPR	1
02-0009		NIPPLE,CS,SCH40- 3"X2 5/8"CLOS	1
10-0203		CAMLOCK,MALE,3"X3"FNPT	1
10-0211		CAMLOCK,FEMALE,3"X3"FNPT	1
10-0218		CAMLOCK,CAP,3"	1
10-0466		CAMLOCK,CHAIN,12" S-HOOK	1
121005012	A	VALVE,HYDRAULIC-4 WAY,2 POSITI	1
A135500		FITTING,STRAIGHT- 1/2" MSAE X	1
A135490		FITTING,ELBOW,90D- 1/2" MSAE X	3
A239102		FITTING,STRAIGHT- 3/4' MSAE X	2
A239103		FITTING,ELBOW,90D- 3/4" MSAE X	2