



RIHM KENWORTH

# MAY SPECIALS

Family Owned & Operated Since 1932



 **RoadWorks**<sup>®</sup>  
CLASSIC STYLE BUMPERS  
OFFERED IN CHROME & STAINLESS



**FEATURED PRODUCT:** Classic Style Bumpers



**Albert Lea**  
77847 209th St  
Albert Lea, MN 56007  
507.552.1340

**Coon Rapids**  
9400 Evergreen Blvd  
Coon Rapids, MN 55433  
507.552.1340

**Mankato**  
2401 9th Ave  
Mankato, MN 56001  
507.550.3800

**Sauk Centre**  
805 Shamrock Ln  
Sauk Centre, MN 56378  
320.352.8540

**South St. Paul**  
425 Concord St South  
South St. Paul, MN 55075  
651.646.7833

**Superior**  
4501 Tower Ave  
Superior, WI 54880  
715.395.5350

**Winona**  
6830 Martina Rd  
Minnesota City, MN 55959  
507.452.4400

# RMC

## TRUCK PARTS

### SPRING ACCESSORIES



SPRING PIN

02-01781RMC \$9.01



SPRING SHACKLE BAR

B20-6006RMC \$21.12



SPRING SHACKLE

02-01784RMC \$20.10



SPRING PIN BUSHING

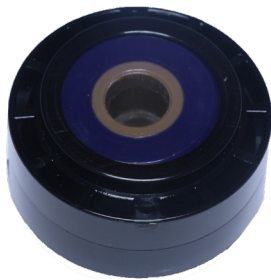
02-01805RMC \$14.25

### EXHAUST PARTS & ACCESSORIES



EXHAUST BELLOW, 12.5"

M66-3541RMC \$262.87



EXHAUST BUSHING

M13-1011RMC \$10.33



EXHAUST CLAMP 5"

EC50PLA-RRMC \$6.00



EXHAUST CLAMP 5" SS

EC50PLS-RRMC \$8.25

### DPF CLAMP



DPF CLAMP 10.5"

A6809950302RMC \$105.37

### TORQUE ROD ASSEMBLY & ACCESSORIES



TORQUE ROD ASSEMBLY  
24" FL MODELS

16-18972-000RMC \$123.72



TORQUE ROD BUSHING

839310RMC \$23.83



TORQUE ROD ASSEMBLY  
24.5" FL MODELS

A16-16749-002RMC \$95.17

**GREAT PRODUCTS, EVEN GREATER VALUE!**

# RMC

## TRUCK PARTS

### SLACK ADJUSTERS - GUNITE STYLE



SLACK ADJUSTER AUTOMATIC  
GUNITE STYLE 5.5"

AS1132RMC \$51.01



SLACK ADJUSTER, AUTOMATIC  
GUNITE STYLE 5.5"

AS1136RMC \$51.01



SLACK ADJUSTER, AUTOMATIC  
GUNITE STYLE 5.5"

AS1140RMC \$51.01



SLACK ADJUSTER, AUTOMATIC  
GUNITE STYLE 6"

AS1141RMC \$51.01

### SLACK ADJUSTERS - HALDEX STYLE



AUTOMATIC SLACK  
ADJUSTER - HALDEX STYLE 6"

400-10212RMC \$53.58



AUTOMATIC SLACK ADJUSTER  
- HALDEX STYLE 5.5" - 6.5"

400-10143RMC \$57.07

### PTO KITS & PUMPS



PTO KIT  
(CHELSEA STYLE)

AVC295-8RMC \$207.10



PTO DUMP PUMP, C SERIES  
DIRECT MOUNT CCW

C102ASRMC \$557.92

### RADIATOR CAPS



RADIATOR CAP 10 PSI

RC1040RMC \$6.63



RADIATOR CAP 15 PSI

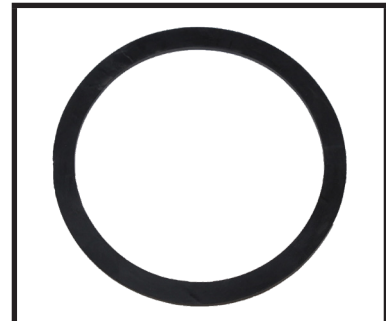
RC1540RMC \$5.43



RADIATOR CAP 16 PSI

RC1630RMC \$5.65

### FUEL CAP



FUEL TANK CAP GASKET

90-00334RMC \$4.17

CALL OR TEXT YOUR LOCAL DEALERSHIP  
TO PLACE AN ORDER!

# MONTHLY SPECIALS



PART DESCRIPTION	COUPON CODE	DISCOUNT
CUMMINS 15L RECONDITIONED ENGINES	M22MAY3679	<b>\$300 OFF</b>
CUMMINS GENUINE TURBOS	M22MAY3678	<b>\$75 OFF</b>
CUMMINS GENUINE DOCS	M22MAY3676	<b>\$65 OFF</b>
TRP® ELC & HDE COOLANT CONCENTRATE & 50/50 DRUMS	M22MAY3597	<b>\$55 OFF</b>
VITRIFRIGO REFRIGERATORS	M22MAY3661	<b>\$50 OFF</b>
CUMMINS GENUINE EGR COOLERS	M22MAY3675	<b>\$40 OFF</b>
CUMMINS GENUINE AIR COMPRESSORS	M22MAY3674	<b>\$25 OFF</b>
TRP® POWER STEERING PUMPS	M22MAY3590	<b>\$12 OFF</b>
CUMMINS GENUINE NOX SENSORS	M22MAY3672	<b>\$10 OFF</b>
TRP® FUEL TANK CAPS	M22MAY3665	<b>\$5 OFF</b>
PACCAR GENUINE BUSHINGS	M22MAY3663	<b>\$4 OFF</b>



TRP® POWER STEERING PUMPS



TRP® FUEL TANK CAPS



VITRIFRIGO REFRIGERATORS

## Online Parts Counter

Powered By **PACCARPARTS**

PART DESCRIPTION	COUPON CODE	DISCOUNT
TRP® HOOD SPRINGS	0223567	<b>\$3 OFF</b>
TRP® WIPER MOTORS	0223569	<b>\$11 OFF</b>
EATON CLUTCHES	0223239	<b>\$40 OFF</b>
TRP® CLUTCHES	0223240	<b>\$40 OFF</b>

**ORDER ANYTIME**

365  
365 days a year

24  
24 hours a day

From any device

Online Parts Counter  
Powered By **PACCARPARTS**

**KENWORTH**  
The World's Best  
Parts + Service

# 6 FOR 5 CUMMINS INJECTORS

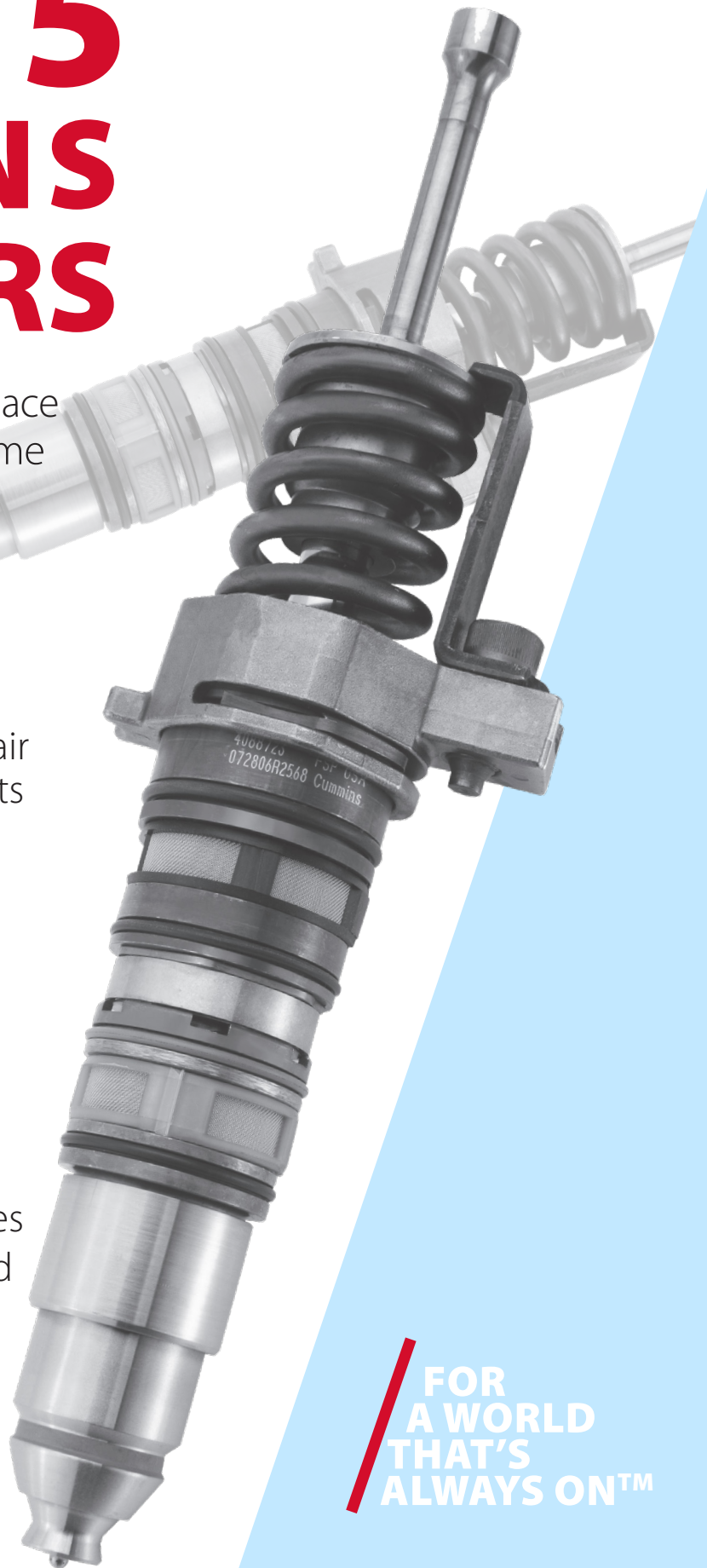
It is highly recommended to replace all 6 fuel injectors at the same time when a 5.9L to 15L engine is experiencing a failed injector.

## BENEFITS

- Maximize your parts savings
- Get a more comprehensive repair & reduce downtime & labor costs
- All injectors will have the same warranty terms
- Genuine Cummins quality
- Improved fuel economy
- Increased engine life

## DETAILS

- Applicable to 5.9L to 15L engines
- QX injector 6 packs are excluded



FOR  
A WORLD  
THAT'S  
ALWAYS ON™

**IN-STOCK!**

# **CHROME**

**BUMPERS**



**RoadWorks<sup>®</sup>**  
**CLASSIC STYLE BUMPERS**  
**OFFERED IN CHROME & STAINLESS**

# BELTS & HOSES

Hold your "hoses" because we've got deals for you!

## Hoses by the Foot

PART #	PRICE
D1029-2934	\$5.08
D1029-2965	\$5.20
D1030-2364	\$20.71
D1030-2585	\$21.60
D1030-2650	\$19.59
D1030-2728	\$18.94
D1029-2980	\$6.31
D1030-3625	\$6.17
D1030-3833	\$5.94
HE2025	\$3.18
HE2277	\$2.84
HE2707	\$3.01
HE2713	\$4.68
HE27141	\$5.24
HE4026	\$2.93
HE4040	\$2.44
HE5076	\$3.36
HE8813	\$2.56



D1030-2650

## More Hoses

PART #	PRICE
D50-6039	\$39.93
F04-6006	\$55.53
F50-6308	\$47.28
HE23521	\$112.55
HE2354	\$125.60
HE8699	\$23.15
HE8716	\$26.70
PE13000	\$132.40
PE13050	\$156.25
V38-1018	\$13.12
V38-1090	\$20.53



PE13000

## Belts

PART #	PRICE
17590BLT	\$9.74
17610BLT	\$11.80
22550BLT	\$13.33
22570BLT	\$14.90
825K8BLT	\$26.75
D84-1000-3061620	\$26.84
D84-1000-6061620	\$27.25
D84-1000-6102220	\$43.17
D84-1000-6122180	\$60.59
D84-1000-6122310	\$61.53
D84-1002-071939	\$31.83
D84-1002-121640	\$62.54
D84-1003-082078	\$34.13
D84-1003-121212	\$53.94
D84-1011-082053	\$32.20



D84-1000-6061620

**RIHM KENWORTH BODY SHOP**  
 CUSTOM PAINT DESIGNS  
 MATCH ANY PAINT COLOR  
 WORK ON ALL MAKES & MODELS



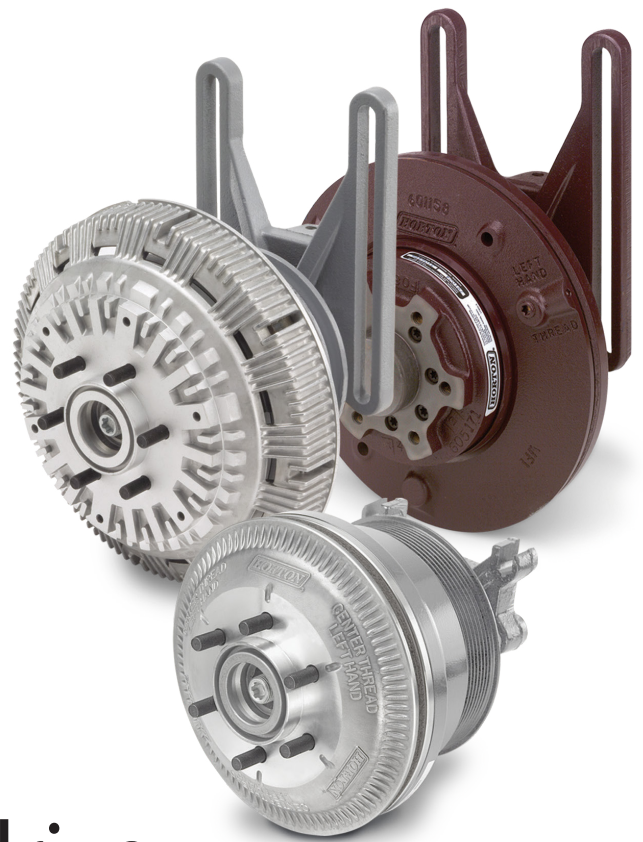
**CALL OUR BODY SHOP TODAY FOR A FREE DESIGN ESTIMATE!**

9400 Evergreen Blvd, Coon Rapids, MN 55433

651.236.6080



When your fan drive needs service, replace it with a high-quality DM Advantage<sup>®</sup> or HT/S Advantage<sup>®</sup> remanufactured fan drive



PART DESCRIPTION	PART #	PRICE*
DUAL PILOT K32 REPAIR KIT	9908504	\$335.90
DM ADVANTAGE ON-OFF - NEW	99A9586HOR	\$1,475.73
DM ADVANTAGE ON-OFF REMAN	79A9592RMAN	\$657.47
DM ADVANTAGE ON-OFF REMAN	79A9586RMAN	\$654.91
DM ADVANTAGE ON-OFF REMAN	79A9361RMAN	\$657.47
DM ADVANTAGE ON-OFF REMAN	79A9897RMAN	\$657.47
DM ADVANTAGE 2 SPEED REMAN	79A9782RMAN	\$936.42
DM ADVANTAGE 2 SPEED REMAN	79A9761RMAN	\$936.42
HT/S ADVANTANGE REMAN	791014RMAN	\$751.14
DUAL PILOT ON-OFF QUICK KIT	1S-DP	\$482.99
HT/S ADVANTAGE SUPER KIT	994305HOR	\$388.79
DMA ON-OFF RAPID REPAIR KIT	FCR5568	\$417.96
DM ADVANTAGE SEAL KIT	994346HOR	\$96.13
FAN BLADE 813- CW SUCKER, 91.2WD, 127.06I	996813502-002	\$181.33

\*Core charges apply to all reman parts



# WHY CONSIDER A REMANUFACTURED FAN CLUTCH?\*

- **Maximum uptime and long life**
  - High-quality DRAC bearings
  - Durable design
  - Feature latest technology
  - Proven in millions of OEM miles
  - Long-life friction liner and air cartridge
  - Made in the U.S.A.
- **Easy to install and cost-effective**
  - Exact drop-in replacements
  - Total cost can be less than rebuilding
  - Credit for old Horton or competitive cores
- **Reliable operation**
  - Smooth fan engagements prevent damage to belts and tensioners
  - OEM spec design
  - Same warranty as new
  - Any obsolete or damaged parts always replaced



9908504



1S-DP



DRAC BEARINGS

## NOT ALL BEARINGS ARE CREATED EQUAL

- Uses Horton's industry-leading, double-row, angular contact (DRAC) bearing for increased durability and product life
- Over 3x the bearing life vs. competition during hot-box durability test
- 55% more rolling elements per row
- Highest-rated load capacity
- High-heat resistant grease and Viton seal

# CLEARANCE CORNER

Take advantage of this **LIMITED-TIME** sale!

We are clearance pricing our limited supply of remaining **Pro Steering** products at all our dealership locations to make room for new inventory

*Available products may vary depending on store location*

Ask your local parts counter or sales representative about our current product availability

PART #	PRICE
DM100PMW	\$450.72
DM100PMT	\$450.72
DM100PAH	\$450.72
DM100PLJ	\$450.72
DTAS65004	\$400.95
DTAS65024	\$400.95
DTAS65006	\$400.95
DTAS65080	\$400.95
DTAS65155	\$400.95
DTAS65166	\$400.95
DTHP60010	\$400.95

Not quite ready to make that large investment in equipment?

## Full Service Lease

It may be a better fit for you.



651.800.0321

FULL SERVICE LEASE | RENTALS | FLEET & CONTRACT MAINTENANCE

### Financial Benefits of Leasing -

- Manages risk & improves cash flow
- Reduces fleet costs
- Frees up working capital
- Provides reliable, predictable fleet cost
- Minimizes administrative overhead expenses

### Operational Benefits of Leasing -

- Allows you to focus on your core business
- Comprehensive maintenance program
- Maintenance programs designed to keep your fleet operating at peak efficiency
- New equipment tailored to your needs
- Licensing & fuel tax management
- Rihm is a NationalLease & PacLease member which provides our customers with 24/7 roadside assistance throughout the US



**RIHM LEASING**

MINNESOTA | WISCONSIN | SOUTH DAKOTA

# COMPLETE PROTECTION FOR YOUR HEAVY-DUTY ENGINE

The Shell family of heavy-duty motor oils and coolants are formulated to provide high-performance protection for today's heavy-duty diesel and natural gas engines.

The Shell brand is excited to offer a complete product line of extended life coolants (ELC) and Fully Formulated engine coolants, designed to deliver:

- Protection against overheating
- Corrosion protection
- Maintenance savings

## INTERESTED IN GOING THE FULL DISTANCE?

Shell ROTELLA ELC™ Nitrite-Free Provides up to 1.2 million miles or 24,000 hours in Class 8 trucks\*, up to 600,000 miles or 12,000 hours in other commercial applications

## SHELL LUBRICANT SOLUTIONS



PART DESCRIPTION	PART #	PRICE
COOLANT ELC NITRITE FREE 50/50 - 1 GALLON SIZE	550041810	\$9.99
COOLANT ELC NITRITE FREE 50/50 - 55 GAL DRUM	550041811	\$494.45

\*Requires full use of Shell Rotella® ELC Nitrite-Free 50/50 Coolant in the system and proper maintenance. Proper maintenance as detailed at [shell.us/coolants](http://shell.us/coolants). Follow OEM recommendations for specified maintenance.



INTRODUCING KENWORTH'S

# ZERO EMISSION BATTERY-ELECTRIC TRUCKS

Built on proven platforms, with superior visibility, reliability, maneuverability and driver comfort. The T680E Class 8 and K270E/K370E Medium Duty models combine state-of-the-art zero emission powertrains with comprehensive PACCAR charging solutions and infrastructure support that takes you seamlessly into the electric era, so you can drive to zero emissions with confidence.



## K270E & K370E

As you look for ways to meet increasingly stringent urban restrictions on noise and emissions, we have a solution: Kenworth K270E Class 6 and K370E Class 7 battery-electric trucks. These popular – and proven – platforms combine fully-integrated, state-of-the-art electric powertrains with superior visibility, maneuverability and driver comfort. High-density battery packs deliver up to a 200 mile range with zero emissions and a rapid one-hour DC re-charge. Perfect for local distribution, pickup and delivery and last mile logistics applications.



COMING THIS FALL

TEST DRIVE A T680E & A K270E AT YOUR LOCAL RIHM KENWORTH!

Albert Lea · Coon Rapids · Mankato · Sauk Centre · South St. Paul · Superior · Winona



Join Rihm Kenworth & the ATHS Minnesota Metro Chapter for an

# AMERICAN TRUCK HISTORICAL SOCIETY

# *truck show*



425 Concord Street South · South St. Paul, MN 55075

RESTORED OR WORKING TRUCKS · PULLING TRUCKS · PICKUP TRUCKS

## Sunday, June 19, 2022

9 am - 3 pm



**FREE** for all visitors - bring your friends & family!

**ALL** truck makes, models & ages welcome!

No fee to display trucks!

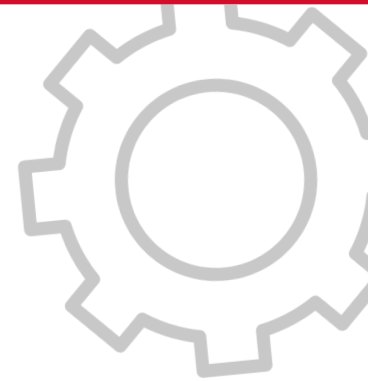
651.270.0718 or 612.965.6061



# PACCAR SOLUTIONS

## Making your service experience even better

### Tech Talk



Unfortunately, no matter how hard we try, trucks are going to break at some point- it is inevitable. However unplanned service events can be inconvenient and costly, and can potentially lead to lost loads, rentals, hotels, disgruntled drivers, and other costly things. Here at Rihm, we strive to make it as easy and pain-free as possible to manage in-progress service fixes and get trucks back out making money as quick as possible. In the event of a longer repair situation, we want to communicate the circumstances as quickly as possible to allow for timely business decisions to be made.

Over the last year our team has been implementing Paccar Solutions – Service Management in all our Rihm Kenworth locations. When our Superior, WI store goes online at the beginning of May all Rihm dealerships will be using this as the main estimating and customer communication tool. At no cost to the customer, this tool provides direct access to track repairs, receive and approve estimates, communicate directly with staff regarding the repairs and receive updates and alerts via email or text. When fully implemented and utilized correctly there will not be a need to pick up a phone to call and wait for an update. All service updates and case information can now be sent directly to a mobile device or accessed through the emailed link provided.

Each time service is needed, our goal is to get your truck back on the road as quickly as possible and to communicate all necessary details to allow you to run your business successfully. Paccar Solutions – Service Management is greatly enhancing our ability to meet that goal. We look forward to showing you the new improved efficiency and streamlined communication in our service departments.

**Author: Kenny**  
Service Manager, South St. Paul  
11 Years of Experience



### WHAT CAN I USE THE SERVICE MANAGEMENT SYSTEM FOR?

- Track your repair
- Quickly approve estimates
- Easily communicate with your service team
- Receive repair alerts
- Get service case updates



### GETTING STARTED

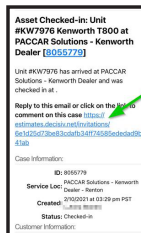
#### 1 PROVIDE YOUR CONTACT EMAIL(S)

It's fast and easy. Simply provide the Service team with your email address. Make sure to also provide the email for the key approver for your company (the person who will approve the repair estimates).

*If you're new to Service Management, you'll be prompted to create a password on your initial visit to the site and anytime you visit a Kenworth Service location.*

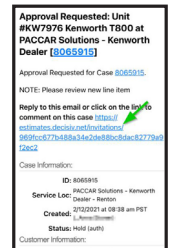
#### 2 ACCESS CASE VIEW

Click the link in the email to view case. Make sure "TruckTechPlus Service Management" is on your inbox safe list.



#### 3 OPEN SERVICE CASE LINK

Look for the Approval Requested Email. Click the link to access the portal and approve the line items. You can also use the notes section to view all communications.



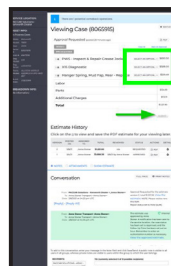
#### 4 APPROVE ESTIMATES

Click the drop down menu for each line item and select:

- Approve
- Deny
- Defer

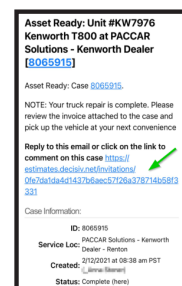
Click **SUBMIT**

The Service Team will start your repair as soon as possible after your approval is received.



#### 5 GET CASE STATUS UPDATES

Check repair status by clicking the email link to access the case. The "Asset Ready" notification will alert you that the truck repair is complete.



# CABIN AIR FILTERS

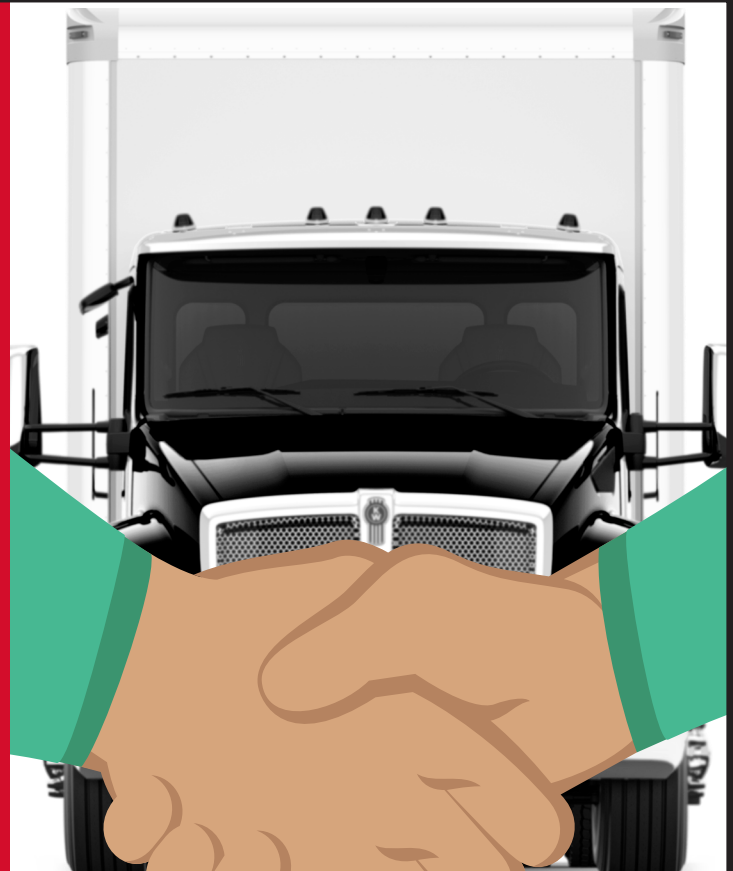
By Baldwin

PART #	PRICE
PA10129JAB	\$11.35
PA10144JAB	\$7.43
PA30269JAB	\$20.94
PA10097JAB	\$12.88



## THE FINANCING *YOU NEED* FROM THE PEOPLE YOU *TRUST*

- Easy online credit application
- Potential for same-day approval
- Seasonal, token & skip payments
- Ability to work with 20 different lenders
- Extended and PACCAR warranty options
- Vocational truck & specialty vehicle financing
- Retail loans, lines of credit, FMV & TRAC Leases
- Financing for trailers & add-ons (boxes, APUs, reefers etc.)
- Convenient e-sign option if you're busy or on the road
- Chance to get approved even with "less than perfect credit"



Have questions about our truck financing options?

Contact Lisa Mick | Finance Manager | 651.649.5607 | [lisa.mick@rihmfamilycompanies.com](mailto:lisa.mick@rihmfamilycompanies.com)



# THIS MONTH IN RIHM HISTORY:

The construction for the new South St. Paul location first broke ground in May 2017.



**Eric Anderson**  
Parts Manager, Sauk Centre

## Meet Your Parts Professional

Eric first started working for Rihm 10 years ago and currently manages the parts department at our Sauk Centre, MN location. However, he has been working in the trucking industry as a whole for over 21 years. During his free time, Eric enjoys going camping, hunting, and overall just spending time with his family and German Shepard.

When asked, Eric said that his favorite part of his job is, "The staff I work with at the Sauk Centre location. Some of us have been together a long time. I [also] enjoy the industry because our truck drivers are the ones that keep America moving."

**Main Store Location:** Sauk Centre, MN



**RIHM KENWORTH**

All prices & products listed in this booklet are only available while supplies last, and may only be redeemed for products or services purchased between **May 1, 2022 - May 31, 2022**. No substitutions or rain checks will be allowed. Coupons cannot be redeemed for a cash value. Discounts, prices and/or coupons cannot be applied to previous purchases, or towards any product purchases made outside the designated dates. Online Parts Counter coupons are only redeemable online & will not be recognized for in-store purchases.

**Albert Lea**  
77847 209th St  
Albert Lea, MN 56007  
507.552.1340

**Coon Rapids**  
9400 Evergreen Blvd  
Coon Rapids, MN 55433  
507.552.1340

**Mankato**  
2401 9th Ave  
Mankato, MN 56001  
507.550.3800

**Sauk Centre**  
805 Shamrock Ln  
Sauk Centre, MN 56378  
320.352.8540

**South St. Paul**  
425 Concord St South  
South St. Paul, MN 55075  
651.646.7833

**Superior**  
4501 Tower Ave  
Superior, WI 54880  
715.395.5350

**Winona**  
6830 Martina Rd  
Minnesota City, MN 55959  
507.452.4400