



**Model E - Flanged x Flanged**



**Model E - Flanged x Grooved**



**Model E3 - Grooved x Grooved**

### MODEL E & E3 ALARM VALVES

- For 2-1/2" (65mm), 3" (80mm) & 76mm sizes, see Bulletins 427 & 428
- For 4" (100mm), 6" (150mm) & 8" (200mm) sizes, see Bulletins 407, 417, 409 & 410

Description	Part Number	Short Code	List Price
<b>MODEL E ALARM VALVE FLANGED X FLANGED - VALVE ONLY</b>			
2 1/2,ALARM VALVE,E,FLANGE X FLANGE(E3)	6102025549	25AE	\$2,623.06
3,ALARM VALVE,E,FLANGE X FLANGE(E3)	6102030549	3AE	\$2,623.06
65MM,ALARM VALVE,E,PN16,FLXFL (E3)	6102025547	65MMAE3	\$2,623.06
65MM,ALARM VALVE,E,BS-E,FLANGEXFLANGE	6102025548		\$2,623.06
80MM,ALARM VALVE,E,BS-E,FLANGEXFLANGE	6102030548		\$2,623.06
4,ALARM VALVE,"E",FLANGED X FLANGED	6102040500	4A	\$2,623.06
6,ALARM VALVE,"E",FLANGED X FLANGED	6102060500	6A	\$3,283.78
8,ALARM VALVE,"E",FLANGED X FLANGED	6102080500	8A	\$4,698.46
<b>MODEL E ALARM VALVE FLANGED X GROOVED-VALVE ONLY</b>			
2 1/2,ALARM VALVE,E,FLANGE X GROOVE (E3)	6102025539	25AGE	\$2,623.06
3,ALARM VALVE,E,FLANGE X GROOVE (E3)	6102030539	3AGE	\$2,623.06
4,ALARM VALVE,"E",FLANGED X GROOVED	6102040515	4AG	\$2,623.06
6,ALARM VALVE,"E",FLANGED X GROOVED	6102060515	6AG	\$3,283.78
8,ALARM VALVE,"E",FLANGED X GROOVED	6102080515	8AG	\$4,698.46
<b>MODEL E3 ALARM VALVE GROOVED X GROOVED - VALVE ONLY</b>			
2 1/2,ALARM VALVE,E3,GROOVE X GROOVE	6102025519	25AGG	\$2,623.06
3,ALARM VALVE,E3,GROOVE X GROOVE	6102030519	3AGG	\$2,623.06
76MM,ALARM VALVE,E3,GROOVE X GROOVE	6102030517	76AGGM	\$2,623.06
4,ALARM VALVE,E3 GROOVED X GROOVED	6102040519	4AGG	\$2,623.06
6,ALARM VALVE,E3,GROOVED X GROOVED	6102060519	6AGG	\$3,283.78
8,ALARM VALVE,E3,GROOVED X GROOVED	6102080519	8AGG	\$4,698.46

Description	Part Number	Short Code	List Price
<b>MODEL E ALARM VALVE FLANGED X FLANGED - VERTICAL FULLY ASSEMBLED</b>			
2 1/2,ALARM VALVE,E,FLXFL,W/E3,VERT TRIM	6504121040	25AFE3V	\$5,940.81
3,ALARM VALVE,E,FLXFL,W/E3,VERT TRIM	6504131040	3AFE3V	\$5,940.81
65MM,PN16,AV,FL/FL,E,CP,CD,VERT MTO	6504A21041		\$5,940.81
65MM,BS,ALARM VALVE,E3,FLXFL,W/VERT TRIM	6504A21043		\$5,940.81
80MM,BS-E,AV,FL/FL,E,CP,CD,VERT MTO	6504A31041		\$5,940.81
<b>MODEL E ALARM VALVE FLANGED X FLANGED - HORIZONTAL FULLY ASSEMBLED</b>			
2 1/2,ALARM VALVE,E,FLXFL,W/E3,HORZ TRIM	6504121240	25AFE3H	\$5,940.81
3,ALARM VALVE,E,FLXFL,W/E3,HORZ TRIM	6504131240	3AFE3H	\$5,940.81
65MM,PN16,AV,FL/FL,E,CP,CD,HOR MTO	6504A21241		\$5,940.81
65MM,BS-E,AV,FL/FL,E,CP,CD,HOR MTO	6504A21243		\$5,940.81
80MM,BS-E,AV,FL/FL,E,CP,CD,HOR MTO	6504A31241		\$5,940.81
<b>MODEL E ALARM VALVE FLANGED X GROOVED - VERTICAL FULLY ASSEMBLED</b>			
2 1/2,ALARM VALVE,E,FLXGE,W/E3,VERT TRIM	6504121030	25AGE3V	\$5,940.81
3,ALARM VALVE,E,FLXGE,W/E3 VERT TRIM	6504131030	3AGE3V	\$5,940.81
<b>MODEL E ALARM VALVE FLANGED X GROOVED - HORIZONTAL FULLY ASSEMBLED</b>			
2 1/2,ALARM VALVE,E,FLXGE,W/E3,HORZ TRIM	6504121230	25AGE3H	\$5,940.81
3,ALARM VALVE,E,FLXGE,W/E3,HORZ TRIM	6504131230	3AGE3H	\$5,940.81
<b>MODEL E3 ALARM VALVE GROOVED X GROOVED - VERTICAL FULLY ASSEMBLED</b>			
2 1/2,ALARM VALVE,E3,GEXGE,W/VERT TRIM	6504121010	25AGGE3V	\$5,940.81
3,ALARM VALVE,E3,GEXGE,W/VERT TRIM	6504131010	3AGGE3V	\$5,940.81
76MM,ALARM VALVE,E3,GEXGE,W/VERT TRIM	6504A31011		\$5,940.81
<b>MODEL E3 ALARM VALVE GROOVED X GROOVED - HORIZONTAL FULLY ASSEMBLED</b>			
2 1/2,ALARM VALVE,E3,GEXGE,W,HORZ TRIM	6504121210	25AGGE3H	\$5,940.81
3,ALARM VALVE,E,GEXGE,W/E3,HORZ TRIM	6504131210	3AGGE3H	\$5,940.81
76MM,AV,GE/GE,E,CP,CD,HORIZONTAL MTO	6504A31211		\$5,940.81

## MODEL E & E3 ALARM VALVES

- For 2-1/2" (65mm), 3" (80mm) & 76mm sizes, see Bulletins 427 & 428
- For 4" (100mm), 6" (150mm) & 8" (200mm) sizes, see Bulletins 407, 417, 409 & 410

Description	Part Number	Short Code	List Price
<b>MODEL E ALARM VALVE FULLY ASSEMBLED (FLANGED X FLANGED)</b>			
4"	6504141424	4AFT	\$ 5,940.81
6"	6504141426	6AFT	\$ 6,518.75
8"	6504141428	8AFT	\$ 8,049.37
<b>MODEL E ALARM FULLY ASSEMBLED VALVE (FLANGED X GROOVED)</b>			
4"	6504141404	4AGFT	\$ 5,940.81
6"	6504141406	6AGFT	\$ 6,518.75
8"	6504141408	8AGFT	\$ 8,049.37
<b>MODEL E3 ALARM FULLY ASSEMBLED VALVE (GROOVED X GROOVED)</b>			
4"	6504141414	4AGGFT	\$ 5,940.81
6"	6504141416	6AGGFT	\$ 6,518.75
8"	6504141418	8AGGFT	\$ 8,049.37

Description	Part Number	Short Code	List Price
<b>MODEL E3 TRIM (ONLY) - SEGMENTED / ASSEMBLED</b>			
Vertical - 2, 2-1/2" & 3"	6502054501	25TE3VP	\$2,078.29
Horizontal - 2, 2-1/2" & 3"	6502054505	25TE3HP	\$2,078.29
Vertical — 4", 6", 165mm	6502141415	4E3P	\$2,078.29
Vertical — 8"	6502141436	8E3P	\$2,078.29
Horizontal — 4", 6", 165mm	6502141418	4E3HP	\$2,120.07
Horizontal — 8"	6502141438	8E3HP	\$2,120.07
Vertical — 4", 6", 165mm (W/ Test And Drain)**	6502141414	4E3TDP	\$3,683.83
Vertical — 8" (W/ Test And Drain)	6502141432	8E3TDP	\$3,683.83
Horizontal — 4", 6", 165mm (W/ Test And Drain)**	6502141413	4E3HTDP	\$3,725.63
Horizontal — 8" (W/ Test And Drain)	6502141434	8E3HTDP	\$3,725.63
Optional E3 Pressure Relief Trim Kit	6502050120	E3PR	\$ 569.29
<b>MODEL E3 TRIM (ONLY) - LOOSE</b>			
Vertical - 2, 2-1/2" & 3"	6502054502	25TE3VL	\$1,696.34
Horizontal - 2, 2-1/2" & 3"	6502054506	25TE3HL	\$1,696.34
Vertical — 4", 6", 165mm	6502141416	4E3L	\$1,696.34
Vertical — 8"	6502141435	8E3L	\$1,696.34
Vertical — 4", 6", 165mm (W/ Test And Drain)**	6502141412	4E3TDL	\$3,300.45
Vertical — 8" (W/ Test And Drain)**	6502141431	8E3TDL	\$3,300.45
Horizontal — 4", 6", 165mm	6502141417	4E3HL	\$1,736.70
Horizontal — 8"	6502141437	8E3HL	\$1,736.70
Horizontal — 4", 6", 165mm (W/ Test And Drain)**	6502141411	4E3HTDL	\$3,342.25
Horizontal — 8" (W/ Test And Drain)**	6502141433	8E3HTDL	\$3,342.25
Optional E3 Pressure Relief Trim Kit	6502050120	E3PR	\$ 569.29

<b>RETARD CHAMBER &amp; MECHANICAL SPRINKLER ALARM</b>			
Retard Chamber — S-1	6303000100	RCTSS	\$1,051.84
Mech. Sprk. Alarm — C	6302000300	WM	\$1,427.20

**Note:**

The fully assembled trim listed above is the Vertical trim.

The Horizontal trim is also available as fully assembled and is the same price.



### G Right Check Riser

- See Bulletin 806



### G Swing Check

- See Bulletin 807



### CVE Swing Check

- See Bulletin 810

Description	Part Number	Short Code	List Price
<b>MODEL G RISER CHECK, GROOVED</b>			
1-1/2" (40mm)	6107000000	15RC	\$ 1,088.02
1-1/2" (40mm) Red	6107000100	15RCR	\$ 1,088.02
2" (50mm)	6107010000	2RC	\$ 1,126.71
2" (50mm) Red	6107010100	2RCRED	\$ 1,126.71
2-1/2"(65mm)	6107020000	25RC	\$ 1,126.71
76mm	6107076000	76RC	\$ 1,126.71
3" (80mm)	6107030000	3RC	\$ 1,126.71
4" (100mm)	6107040000	4RC	\$ 1,147.59
6" (150mm)	6107060000	6RC	\$ 2,127.75
165mm	6107065000	165RC	\$ 2,127.75
8" (200mm)	6107080000	8RC	\$ 4,198.39
10" (250mm)	6107090000	10RC	\$ 8,160.13
10" (250mm) Red	6107090100	10RCR	\$ 8,160.13
<b>TRIM FOR RISER CHECK VALVES</b>			
1-1/2" & 2" Trim	6506000015	15RTG	\$ 769.63
2-1/2" & 3" Trim	6506000030	25RTG	\$ 769.63
4", 6", 8" & 10" Trim	6506000020	4RTG	\$ 769.63
<b>MODEL G SWING CHECK WITH 1/2" (50MM) DRAIN, GROOVED</b>			
1-1/2" (40mm)	6107000010	15CK	\$ 707.21
1-1/2" (40mm) Red	6107000110	15CKR	\$ 707.21
2" (50mm)	6107010010	2CK	\$ 779.71
2" (50mm) Red	6107010110	2CKR	\$ 779.71
2-1/2" (65mm)	6107020010	25CK	\$ 779.71
76mm	6107076010	76CK	\$ 779.71
3" (80mm)	6107030010	3CK	\$ 779.71
4" (100mm)	6107040010	4CK	\$ 794.15
6" (150mm)	6107060010	6CK	\$ 1,886.41
165mm	6107065010	165CK	\$ 1,886.41
8" (200mm)	6107080010	8CK	\$ 3,748.57
10" (250mm)	6107090010	10CK	\$ 8,160.13
10" (250mm) Red	6107090110	10CKR	\$ 8,160.13
<b>MODEL G CHECK VALVE REPLACEMENT SEAL KIT</b>			
1-1/2" (40mm) (50mm)	6888040015	15GKIT	\$ 82.36
2" (50mm)	6888040020	2GKIT	\$ 82.36
2-1/2" (65mm)	6888040025	25GKIT	\$ 82.36
3" (80mm)	6888040030	3GKIT	\$ 82.36
4" (100mm)	6888040040	4GKIT	\$ 82.36
6" (150mm)	6888040060	6GKIT	\$ 82.36
8" (200mm)	6888040080	8GKIT	\$ 164.71
10" (250mm)	6888040090	10GKIT	\$ 164.71
<b>MODEL CVE SWING CHECK VALVES - VALVES ONLY</b>			
CVE 4" (100mm)	6108040000	4CVE	\$ 2,098.10
CVE 6" (150mm)	6108060000	6CVE	\$ 2,727.52
CVE 165mm	6108065000	CVE165MM	\$ 2,727.52
CVE 8" (200mm)	6108080000	8CVE	\$ 4,196.21
<b>FULLY ASSEMBLED CVE SWING CHECK VALVES</b>			
CVE 4" (100mm)	6506000040	4CVET	\$ 3,138.09
CVE 6" (150mm)	6506000041	6CVET	\$ 3,766.59
CVE 8" (200mm)	6506000042	8CVET	\$ 5,497.11
<b>TRIM FOR CVE SWING CHECK VALVES</b>			
All Sizes	6506000044	CVETRIM	\$ 1,039.17



**DDV DIAPHRAGM  
 DELUGE  
 ELECTRIC TRIM**

- See Bulletins 551
- DDV Electric-Uses 175 PSI Solenoid Valve

Description	Part Number	Short Code	List Price
<b>MODEL DDV DELUGE VALVES FULLY ASSEMBLED - ELECTRIC TRIM</b>			
1-1/2" Groove/Groove (ANSI/AWWA C606)	6507002000	.	\$ 7,698.24
1-1/2" Flange/Flange Class 150 (ASME B16.5)	6507102000		\$ 8,468.06
1-1/2" Flange/Flange Class 300 (ASME B16.5)	6507202000		\$ 8,468.06
1-1/2" Flange/Flange PN16 (ISO 7005-2)	6507302000		\$ 8,468.06
1-1/2" NPT Thread/Thread (ANSI/ASME B1.20.1)	6507502000		\$ 8,468.06
1-1/2" ISO7-1 Thread/Thread	6507602000		\$ 8,468.06
2" Groove/Groove (ANSI/AWWA C606)	6507022000		\$ 7,698.24
2" Flange/Flange Class 150 (ASME B16.5)	6507122000		\$ 8,468.06
2" Flange/Flange Class 300 (ASME B16.5)	6507222000		\$ 8,468.06
2" Flange/Flange PN16 (ISO 7005-2)	6507322000		\$ 8,468.06
2" NPT Thread/Thread (ANSI/ASME B1.20.1)	6507522000		\$ 8,468.06
2" ISO7-1 Thread/Thread	6507622000		\$ 8,468.06
2-1/2" Groove/Groove (ANSI/AWWA C606)	6507012000		\$ 8,981.28
2-1/2" Flange/Flange Class 150 (ASME B16.5)	6507112000		\$ 9,879.41
2-1/2" Flange/Flange Class 300 (ASME B16.5)	6507212000		\$ 9,879.41
2-1/2" Flange/Flange PN16 (ISO 7005-2)	6507312000		\$ 9,879.41
2-1/2" NPT Thread/Thread (ANSI/ASME B1.20.1)	6507512000		\$ 9,879.41
2-1/2" ISO7-1 Thread/Thread	6507612000		\$ 9,879.41
76MM Groove/Groove (ANSI/AWWA C606)	6507072000		\$ 8,981.28
3" Groove/Groove (ANSI/AWWA C606)	6507032000		\$ 8,981.28
3" Flange/Flange Class 150 (ASME B16.5)	6507132000		\$ 9,879.41
3" Flange/Flange Class 300 (ASME B16.5)	6507232000		\$ 9,879.41
3" Flange/Flange PN16 (ISO 7005-2)	6507332000		\$ 9,879.41
3" NPT Thread/Thread (ANSI/ASME B1.20.1)	6507532000		\$ 9,879.41
3" ISO7-1 Thread/Thread	6507632000		\$ 9,879.41
4" Groove/Groove (ANSI/AWWA C606)	6507042000		\$ 10,905.84
4" Flange/Flange Class 150 (ASME B16.5)	6507142000		\$ 11,996.42
4" Flange/Flange Class 300 (ASME B16.5)	6507242000		\$ 11,996.42
4" Flange/Flange PN16 (ISO 7005-2)	6507342000		\$ 11,996.42
6" Groove/Groove (ANSI/AWWA C606)	6507062000		\$ 14,113.44
6" Flange/Flange Class 150 (ASME B16.5)	6507162000		\$ 15,524.78
6" Flange/Flange Class 300 (ASME B16.5)	6507262000		\$ 15,524.78
6" Flange/Flange PN16 (ISO 7005-2)	6507362000		\$ 15,524.78
165MM Groove/Groove (ANSI/AWWA C606)	6507052000		\$ 14,113.44
8" Groove/Groove (ANSI/AWWA C606)	6507082000		\$ 29,700.00
8" Flange/Flange Class 150 (ASME B16.5)	6507182000		\$ 32,670.00
8" Flange/Flange/Class 300 (ASME B16.5)	6507282000		\$ 32,670.00
8" Flange/Flange PN16 (ISO 7005-2)	6507382000		\$ 32,670.00

**Notes:**

Base trim does not include drain trim, alarm test line, or control valve. Please see the last page of the DDV section for optional trim components.



**DDV DIAPHRAGM  
 DELUGE WET  
 PILOT LINE**

- See Bulletin 551

Description	Part Number	Short Code	List Price
<b>MODEL DDV DELUGE VALVES FULLY ASSEMBLED - WET PILOT TRIM</b>			
1-1/2" Groove/Groove (ANSI/AWWA C606)	6507000000		\$ 6,415.20
1-1/2" Flange/Flange Class 150 (ASME B16.5)	6507100000		\$ 7,056.72
1-1/2" Flange/Flange Class 300 (ASME B16.5)	6507200000		\$ 7,056.72
1-1/2" Flange/Flange PN16 (ISO 7005-2)	6507300000		\$ 7,056.72
1-1/2" NPT Thread/Thread (ANSI/ASME B1.20.1)	6507500000		\$ 7,056.72
1-1/2" ISO7-1 Thread/Thread	6507600000		\$ 7,056.72
2" Groove/Groove (ANSI/AWWA C606)	6507020000		\$ 6,415.20
2" Flange/Flange Class 150 (ASME B16.5)	6507120000		\$ 7,056.72
2" Flange/Flange Class 300 (ASME B16.5)	6507220000		\$ 7,056.72
2" Flange/Flange PN16 (ISO 7005-2)	6507320000		\$ 7,056.72
2" NPT Thread/Thread (ANSI/ASME B1.20.1)	6507520000		\$ 7,056.72
2" ISO7-1 Thread/Thread	6507620000		\$ 7,056.72
2-1/2" Groove/Groove (ANSI/AWWA C606)	6507010000		\$ 7,056.72
2-1/2" Flange/Flange Class 150 (ASME B16.5)	6507110000		\$ 7,762.39
2-1/2" Flange/Flange Class 300 (ASME B16.5)	6507210000		\$ 7,762.39
2-1/2" Flange/Flange PN16 (ISO 7005-2)	6507310000		\$ 7,762.39
2-1/2" NPT Thread/Thread (ANSI/ASME B1.20.1)	6507510000		\$ 7,762.39
2-1/2" ISO7-1 Thread/Thread	6507610000		\$ 7,762.39
76MM Groove/Groove (ANSI/AWWA C606)	6507070000		\$ 7,056.72
3" Groove/Groove (ANSI/AWWA C606)	6507030000		\$ 7,056.72
3" Flange/Flange Class 150 (ASME B16.5)	6507130000		\$ 7,762.39
3" Flange/Flange Class 300 (ASME B16.5)	6507230000		\$ 7,762.39
3" Flange/Flange PN16 (ISO 7005-2)	6507330000		\$ 7,762.39
3" NPT Thread/Thread (ANSI/ASME B1.20.1)	6507530000		\$ 7,762.39
3" ISO7-1 Thread/Thread	6507630000		\$ 7,762.39
4" Groove/Groove (ANSI/AWWA C606)	6507040000		\$ 8,339.76
4" Flange/Flange Class 150 (ASME B16.5)	6507140000		\$ 9,173.74
4" Flange/Flange Class 300 (ASME B16.5)	6507240000		\$ 9,173.74
4" Flange/Flange PN16 (ISO 7005-2)	6507340000		\$ 9,173.74
6" Groove/Groove (ANSI/AWWA C606)	6507060000		\$10,264.32
6" Flange/Flange Class 150 (ASME B16.5)	6507160000		\$11,290.75
6" Flange/Flange Class 300 (ASME B16.5)	6507260000		\$11,290.75
6" Flange/Flange PN16 (ISO 7005-2)	6507360000		\$11,290.75
165MM Groove/Groove (ANSI/AWWA C606)	6507050000		\$10,264.32
8" Groove/Groove (ANSI/AWWA C606)	6507080000		\$22,572.00
8" Flange/Flange Class 150 (ASME B16.5)	6507180000		\$24,829.20
8" Flange/Flange Class 300 (ASME B16.5)	6507280000		\$24,829.20
8" Flange/Flange PN16 (ISO 7005-2)	6507380000		\$24,829.20

**Notes:**

Base trim does not include drain trim, alarm test line, or control valve. Please see the last page of the DDV section for optional trim components.



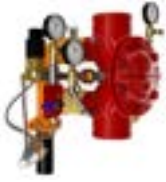
**DDV DIAPHRAGM  
 DELUGE DRY  
 PILOT LINE**

- See Bulletin 551

Description	Part Number	Short Code	List Price
<b>MODEL DDV DELUGE VALVES FULLY ASSEMBLED - DRY PILOT TRIM</b>			
1-1/2" Groove/Groove (ANSI/AWWA C606)	6507001000		\$ 10,264.32
1-1/2" Flange/Flange Class 150 (ASME B16.5)	6507101000		\$ 11,290.75
1-1/2" Flange/Flange Class 300 (ASME B16.5)	6507201000		\$ 11,290.75
1-1/2" Flange/Flange PN16 (ISO 7005-2)	6507301000		\$ 11,290.75
1-1/2" NPT Thread/Thread (ANSI/ASME B1.20.1)	6507501000		\$ 11,290.75
1-1/2" ISO7-1 Thread/Thread	6507601000		\$ 11,290.75
2" Groove/Groove (ANSI/AWWA C606)	6507021000		\$ 10,264.32
2" Flange/Flange Class 150 (ASME B16.5)	6507121000		\$ 11,290.75
2" Flange/Flange Class 300 (ASME B16.5)	6507221000		\$ 11,290.75
2" Flange/Flange PN16 (ISO 7005-2)	6507321000		\$ 11,290.75
2" NPT Thread/Thread (ANSI/ASME B1.20.1)	6507521000		\$ 11,290.75
2" ISO7-1 Thread/Thread	6507621000		\$ 11,290.75
2-1/2" Groove/Groove (ANSI/AWWA C606)	6507011000		\$ 12,188.88
2-1/2" Flange/Flange Class 150 (ASME B16.5)	6507111000		\$ 13,407.77
2-1/2" Flange/Flange Class 300 (ASME B16.5)	6507211000		\$ 13,407.77
2-1/2" Flange/Flange PN16 (ISO 7005-2)	6507311000		\$ 13,407.77
2-1/2" NPT Thread/Thread (ANSI/ASME B1.20.1)	6507511000		\$ 13,407.77
2-1/2" ISO7-1 Thread/Thread	6507611000		\$ 13,407.77
76MM Groove/Groove (ANSI/AWWA C606)	6507071000		\$ 12,188.88
3" Groove/Groove (ANSI/AWWA C606)	6507031000		\$ 12,188.88
3" Flange/Flange Class 150 (ASME B16.5)	6507131000		\$ 13,407.77
3" Flange/Flange Class 300 (ASME B16.5)	6507231000		\$ 13,407.77
3" Flange/Flange PN16 (ISO 7005-2)	6507331000		\$ 13,407.77
3" NPT Thread/Thread (ANSI/ASME B1.20.1)	6507531000		\$ 13,407.77
3" ISO7-1 Thread/Thread	6507631000		\$ 13,407.77
4" Groove/Groove (ANSI/AWWA C606)	6507041000		\$ 14,113.44
4" Flange/Flange Class 150 (ASME B16.5)	6507141000		\$ 15,524.78
4" Flange/Flange Class 300 (ASME B16.5)	6507241000		\$ 15,524.78
4" Flange/Flange PN16 (ISO 7005-2)	6507341000		\$ 15,524.78
6" Groove/Groove (ANSI/AWWA C606)	6507061000		\$ 16,679.52
6" Flange/Flange Class 150 (ASME B16.5)	6507161000		\$ 18,347.47
6" Flange/Flange Class 300 (ASME B16.5)	6507261000		\$ 18,347.47
6" Flange/Flange PN16 (ISO 7005-2)	6507361000		\$ 18,347.47
165MM Groove/Groove (ANSI/AWWA C606)	6507051000		\$ 16,679.52
8" Groove/Groove (ANSI/AWWA C606)	6507081000		\$ 29,700.00
8" Flange/Flange Class 150 (ASME B16.5)	6507181000		\$ 32,670.00
8" Flange/Flange Class 300 (ASME B16.5)	6507281000		\$ 32,670.00
8" Flange/Flange PN16 (ISO 7005-2)	6507381000		\$ 32,670.00

**Notes:**

Base trim does not include drain trim, alarm test line, or control valve. Please see the last page of the DDV section for optional trim components.



## DDV DIAPHRAGM DELUGE REMOTE RESET

- See Bulletin 550

Description	Part Number	Short Code	List Price
<b>MODEL DDV DELUGE VALVE - REMOTE RESET</b>			
1-1/2" Groove/Groove (ANSI/AWWA C606)	6507003000		\$ 10,264.32
1-1/2" Flange/Flange Class 150 (ASME B16.5)	6507103000		\$ 11,290.75
1-1/2" Flange/Flange Class 300 (ASME B16.5)	6507203000		\$ 11,290.75
1-1/2" Flange/Flange PN16 (ISO 7005-2)	6507303000		\$ 11,290.75
1-1/2" NPT Thread/Thread (ANSI/ASME B1.20.1)	6507503000		\$ 11,290.75
1-1/2" ISO7-1 Thread/Thread	6507603000		\$ 11,290.75
2" Groove/Groove (ANSI/AWWA C606)	6507023000		\$ 10,264.32
2" Flange/Flange Class 150 (ASME B16.5)	6507123000		\$ 11,290.75
2" Flange/Flange Class 300 (ASME B16.5)	6507223000		\$ 11,290.75
2" Flange/Flange PN16 (ISO 7005-2)	6507323000		\$ 11,290.75
2" NPT Thread/Thread (ANSI/ASME B1.20.1)	6507523000		\$ 11,290.75
2" ISO7-1 Thread/Thread	6507623000		\$ 11,290.75
2-1/2" Groove/Groove (ANSI/AWWA C606)	6507013000		\$ 12,830.40
2-1/2" Flange/Flange Class 150 (ASME B16.5)	6507113000		\$ 14,113.44
2-1/2" Flange/Flange Class 300 (ASME B16.5)	6507213000		\$ 14,113.44
2-1/2" Flange/Flange PN16 (ISO 7005-2)	6507313000		\$ 14,113.44
2-1/2" NPT Thread/Thread (ANSI/ASME B1.20.1)	6507513000		\$ 14,113.44
2-1/2" ISO7-1 Thread/Thread	6507613000		\$ 14,113.44
76MM Groove/Groove (ANSI/AWWA C606)	6507073000		\$ 12,830.40
3" Groove/Groove (ANSI/AWWA C606)	6507033000		\$ 12,830.40
3" Flange/Flange Class 150 (ASME B16.5)	6507133000		\$ 14,113.44
3" Flange/Flange Class 300 (ASME B16.5)	6507233000		\$ 14,113.44
3" Flange/Flange PN16 (ISO 7005-2)	6507333000		\$ 14,113.44
3" NPT Thread/Thread (ANSI/ASME B1.20.1)	6507533000		\$ 14,113.44
3" ISO7-1 Thread/Thread	6507633000		\$ 14,113.44
4" Groove/Groove (ANSI/AWWA C606)	6507043000		\$ 14,113.44
4" Flange/Flange Class 150 (ASME B16.5)	6507143000		\$ 15,524.78
4" Flange/Flange Class 300 (ASME B16.5)	6507243000		\$ 15,524.78
4" Flange/Flange PN16 (ISO 7005-2)	6507343000		\$ 15,524.78
6" Groove/Groove (ANSI/AWWA C606)	6507063000		\$ 16,679.52
6" Flange/Flange Class 150 (ASME B16.5)	6507163000		\$ 18,347.47
6" Flange/Flange Class 300 (ASME B16.5)	6507263000		\$ 18,347.47
6" Flange/Flange PN16 (ISO 7005-2)	6507363000		\$ 18,347.47
165MM Groove/Groove (ANSI/AWWA C606)	6507053000		\$ 16,679.52
8" Groove/Groove (ANSI/AWWA C606)	6507083000		\$ 35,640.00
8" Flange/Flange Class 150 (ASME B16.5)	6507183000		\$ 39,204.00
8" Flange/Flange Class 300 (ASME B16.5)	6507283000		\$ 39,204.00
8" Flange/Flange PN16 (ISO 7005-2)	6507383000		\$ 39,204.00

**Notes:**

Base trim does not include drain trim, alarm test line, or control valve. Please see the last page of the DDV section for optional trim components.



**DDV DIAPHRAGM  
 DELUGE REMOTE  
 RESET PRESSURE  
 REGULATING**

- See Bulletin 550

Description	Part Number	Short Code	List Price
<b>MODEL DDV DELUGE VALVE - REMOTE RESET PRESSURE REGULATING</b>			
1-1/2" Groove/Groove (ANSI/AWWA C606)	6507007000		\$ 14,113.44
1-1/2" Flange/Flange Class 150 (ASME B16.5)	6507107000		\$ 15,524.78
1-1/2" Flange/Flange Class 300 (ASME B16.5)	6507207000		\$ 15,524.78
1-1/2" Flange/Flange PN16 (ISO 7005-2)	6507307000		\$ 15,524.78
1-1/2" NPT Thread/Thread (ANSI/ASME B1.20.1)	6507507000		\$ 15,524.78
1-1/2" ISO7-1 Thread/Thread	6507607000		\$ 15,524.78
2" Groove/Groove (ANSI/AWWA C606)	6507027000		\$ 14,113.44
2" Flange/Flange Class 150 (ASME B16.5)	6507127000		\$ 15,524.78
2" Flange/Flange Class 300 (ASME B16.5)	6507227000		\$ 15,524.78
2" Flange/Flange PN16 (ISO 7005-2)	6507327000		\$ 15,524.78
2" NPT Thread/Thread (ANSI/ASME B1.20.1)	6507527000		\$ 15,524.78
2" ISO7-1 Thread/Thread	6507627000		\$ 15,524.78
2-1/2" Groove/Groove (ANSI/AWWA C606)	6507017000		\$ 15,396.48
2-1/2" Flange/Flange Class 150 (ASME B16.5)	6507117000		\$ 16,936.13
2-1/2" Flange/Flange Class 300 (ASME B16.5)	6507217000		\$ 16,936.13
2-1/2" Flange/Flange PN16 (ISO 7005-2)	6507317000		\$ 16,936.13
2-1/2" NPT Thread/Thread (ANSI/ASME B1.20.1)	6507517000		\$ 16,936.13
2-1/2" ISO7-1 Thread/Thread	6507617000		\$ 16,936.13
76MM Groove/Groove (ANSI/AWWA C606)	6507077000		\$ 15,396.48
3" Groove/Groove (ANSI/AWWA C606)	6507037000		\$ 15,396.48
3" Flange/Flange Class 150 (ASME B16.5)	6507137000		\$ 16,936.13
3" Flange/Flange Class 300 (ASME B16.5)	6507237000		\$ 16,936.13
3" Flange/Flange PN16 (ISO 7005-2)	6507337000		\$ 16,936.13
3" NPT Thread/Thread (ANSI/ASME B1.20.1)	6507537000		\$ 16,936.13
3" ISO7-1 Thread/Thread	6507637000		\$ 16,936.13
4" Groove/Groove (ANSI/AWWA C606)	6507047000		\$ 16,679.52
4" Flange/Flange Class 150 (ASME B16.5)	6507147000		\$ 18,347.47
4" Flange/Flange Class 300 (ASME B16.5)	6507247000		\$ 18,347.47
4" Flange/Flange PN16 (ISO 7005-2)	6507347000		\$ 18,347.47
6" Groove/Groove (ANSI/AWWA C606)	6507067000		\$ 19,245.60
6" Flange/Flange Class 150 (ASME B16.5)	6507167000		\$ 21,170.16
6" Flange/Flange Class 300 (ASME B16.5)	6507267000		\$ 21,170.16
6" Flange/Flange PN16 (ISO 7005-2)	6507367000		\$ 21,170.16
165MM Groove/Groove (ANSI/AWWA C606)	6507057000		\$ 19,245.60

**Notes:**

Base trim does not include drain trim, alarm test line, or control valve. Please see the last page of the DDV section for optional trim components.





**DDV DIAPHRAGM  
 DELUGE DRY  
 PILOT PRESSURE  
 REGULATING**

- See Bulletin 550
- Dry Pilot Pressure Regulating

Description	Part Number	Short Code	List Price
<b>MODEL DDV DELUGE VALVE - DRY PILOT PRESSURE REGULATING</b>			
1-1/2" Groove/Groove (ANSI/AWWA C606)	6507005000		\$ 12,830.40
1-1/2" Flange/Flange Class 150 (ASME B16.5)	6507105000		\$ 14,113.44
1-1/2" Flange/Flange Class 300 (ASME B16.5)	6507205000		\$ 14,113.44
1-1/2" Flange/Flange PN16 (ISO 7005-2)	6507305000		\$ 14,113.44
1-1/2" NPT Thread/Thread (ANSI/ASME B1.20.1)	6507505000		\$ 14,113.44
1-1/2" ISO7-1 Thread/Thread	6507605000		\$ 14,113.44
2" Groove/Groove (ANSI/AWWA C606)	6507025000		\$ 12,830.40
2" Flange/Flange Class 150 (ASME B16.5)	6507125000		\$ 14,113.44
2" Flange/Flange Class 300 (ASME B16.5)	6507225000		\$ 14,113.44
2" Flange/Flange PN16 (ISO 7005-2)	6507325000		\$ 14,113.44
2" NPT Thread/Thread (ANSI/ASME B1.20.1)	6507525000		\$ 14,113.44
2" ISO7-1 Thread/Thread	6507625000		\$ 14,113.44
2-1/2" Groove/Groove (ANSI/AWWA C606)	6507015000		\$ 14,754.96
2-1/2" Flange/Flange Class 150 (ASME B16.5)	6507115000		\$ 16,230.46
2-1/2" Flange/Flange Class 300 (ASME B16.5)	6507215000		\$ 16,230.46
2-1/2" Flange/Flange PN16 (ISO 7005-2)	6507315000		\$ 16,230.46
2-1/2" NPT Thread/Thread (ANSI/ASME B1.20.1)	6507515000		\$ 16,230.46
2-1/2" ISO7-1 Thread/Thread	6507615000		\$ 16,230.46
76MM Groove/Groove (ANSI/AWWA C606)	6507075000		\$ 14,754.96
3" Groove/Groove (ANSI/AWWA C606)	6507035000		\$ 14,754.96
3" Flange/Flange Class 150 (ASME B16.5)	6507135000		\$ 16,230.46
3" Flange/Flange Class 300 (ASME B16.5)	6507235000		\$ 16,230.46
3" Flange/Flange PN16 (ISO 7005-2)	6507335000		\$ 16,230.46
3" NPT Thread/Thread (ANSI/ASME B1.20.1)	6507535000		\$ 16,230.46
3" ISO7-1 Thread/Thread	6507635000		\$ 16,230.46
4" Groove/Groove (ANSI/AWWA C606)	6507045000		\$ 16,679.52
4" Flange/Flange Class 150 (ASME B16.5)	6507145000		\$ 18,347.47
4" Flange/Flange Class 300 (ASME B16.5)	6507245000		\$ 18,347.47
4" Flange/Flange PN16 (ISO 7005-2)	6507345000		\$ 18,347.47
6" Groove/Groove (ANSI/AWWA C606)	6507065000		\$ 19,245.60
6" Flange/Flange Class 150 (ASME B16.5)	6507165000		\$ 21,170.16
6" Flange/Flange Class 300 (ASME B16.5)	6507265000		\$ 21,170.16
6" Flange/Flange PN16 (ISO 7005-2)	6507365000		\$ 21,170.16
165MM Groove/Groove (ANSI/AWWA C606)	6507055000		\$ 19,245.60

**Notes:**

Base trim does not include drain trim, alarm test line, or control valve. Please see the last page of the DDV section for optional trim components.

## DDV DIAPHRAGM DELUGE VALVE

- Bulletin 550



## LOWER BALL VALVE

- Lower & Upper Ball Valve Option X 2



## DUAL BALL VALVE



## FULL DRAIN VALVE

Description	Part Number	Short Code	List Price
<b>DRAIN TRIM OPTIONS- SELECT ONE</b>			
Lower Ball Valve - 1-1/2" & 2"	77000300		\$ 192.46
Lower Ball Valve - 2-1/2", 3"	77000299		\$ 449.06
Lower Ball Valve - 4", 6", 8"	9884011D		\$ 769.82
Lower & Upper Ball Valve -1 -1/2" & 2"	77000300		\$ 192.46
Lower & Upper Ball Valve - 2-1/2", 3"	77000299		\$ 449.06
Lower & Upper Ball Valve - 4", 6", 8"	9884011D		\$ 769.82
Full Drain Trim - 1-1/2" & 2"	77037003		\$ 833.98
Full Drain Trim - 2-1/2", 3"	77037004		\$ 1,411.34
Full Drain Trim - 4", 6", 8"	77037002		\$ 2,950.99
<b>OPTIONAL TRIM</b>			
DDV Alarm Test Kit MTO	6501040001		\$ 513.22
600 psi Gauge	98248005		\$ 129.49
<b>CONTROL VALVES (UPPER &amp; LOWER)</b>			
Control Valve - 2-1/2"	77000302		\$ 1,154.74
Control Valve - 3"	77000303		\$ 1,154.74
Control Valve - 4"	77000304		\$ 1,283.04
Control Valve - 6"	77000306		\$ 1,667.95
S/A Control Valve 8"	77000308		\$ 2,340.36
Control Valve w/Inlet Spool - 2-1/2"	77000271		\$ 1,539.65
Control Valve w/Inlet Spool - 3"	77000273		\$ 1,539.65
Control Valve w/Inlet Spool - 4"	77000274		\$ 1,667.95
Control Valve w/Inlet Spool - 6"	77000276		\$ 2,309.47
DDV S/A Control Valve 8" Winlet Spool	77000278		\$ 3,232.55



## DELUGE VALVES

- **MODEL DDX DELUGE VALVE**
- Electric, Wet Pilot Line, and Dry Pilot Line Trims
- See Bulletin 519

Description	Part Number	Short Code	List Price
<b>MODEL DDX - DELUGE VALVE ONLY (GROOVED/GROOVED)</b>			
Model DDX - 2"	6103022000	2DDX	\$ 7,034.71
Model DDX - 2-1/2"	6103022500	25DDX	\$ 7,034.71
Model DDX - 3"	6103030000	3DDX	\$ 7,262.44
Model DDX - 76MM	6103027600	76DDXMM	\$ 7,034.71
Model DDX- 4"	6103040026	4DDX	\$ 7,422.43
Model DDX - 6"	6103060024	6DDX	\$ 9,124.52
Model 165MM	6103060028	165DDXMM	\$ 9,124.52
Model DDX - 8"	6103080001	8DDX	\$ 15,157.58
<b>MODEL DDX - DELUGE VALVE ONLY (FLANGE/FLANGE)</b>			
Model DDX- 4"	6103040045	4DDXF	\$ 7,422.43
Model DDX - 6"	6103060046	6DDXF	\$ 9,124.52
Model DDX - 8"	6103080016	8DDXF	\$ 15,157.58
<b>MODEL DDX - DELUGE VALVE ONLY (FLANGE/GROOVED)</b>			
Model DDX- 4"	6103040044	4DDXFG	\$ 7,422.43
Model DDX - 6"	6103060045	6DDXFG	\$ 9,124.52
Model 165MM	6103060052	165DDXFG	\$ 9,124.52
<b>DELUGE TRIM ONLY — SEGMENTALLY ASSEMBLED</b>			
Wet Pilot Line 2", 2-1/2" & 3"	6520702010	25DDXWPN	\$ 4,479.67
Wet Pilot Line 4", 6" & 8"	6520703010	4DDXWPN	\$ 4,479.67
Dry Pilot Line 2", 2-1/2" & 3"	6520802010	25DDXDPPN	\$ 6,710.72
Dry Pilot Line 4", 6" & 8"	6520803010	4DDXDPPN	\$ 6,710.72
Electric Release 2", 2-1/2" & 3"	6520902110	25DDXEPN	\$ 6,271.14
Electric Release 4", 6" & 8"	6520903110	4DDXEPN	\$ 6,271.14
<b>DELUGE TRIM ONLY — INDIVIDUAL PARTS</b>			
Wet Pilot Line 2", 2-1/2" & 3"	6520700010	25DDXWLN	\$ 4,250.51
Wet Pilot Line 4", 6" & 8"	6520701010	4DDXWLN	\$ 4,250.51
Dry Pilot Line 2", 2-1/2" & 3"	6520800010	25DDXDPLN	\$ 6,285.55
Dry Pilot Line 4", 6" & 8"	6520801010	4DDXDPLN	\$ 6,285.55
Electric Release 2", 2-1/2" & 3"	6520900110	25DDXELN	\$ 5,820.03
Electric Release 4", 6" & 8"	6520901110	4DDXELN	\$ 5,820.03

**Notes:**

All DDX trim includes Potter Pressure Switch



## DELUGE VALVES

- **MODEL DDX DELUGE VALVE**
- Electric, Wet Pilot Line, and Dry Pilot Line Trims
- See Bulletin 519

Description	Part Number	Short Code	List Price
<b>MODEL DDX - DELUGE VALVES FULLY ASSEMBLED - ELECTRIC TRIM</b>			
2" Electric Release	6522904110	2DDXFEN	\$ 14,896.41
2" Electric Release w/Control Valve	6522908110	2DDXFEVN	\$ 16,501.11
2-1/2" Electric Release	6521904110	25DDXFEN	\$ 14,896.41
2-1/2" Electric Release w/Control Valve	6521908110	25DDXFEVN	\$ 16,501.11
3" Electric Release	6523904110	3DDXFEN	\$ 15,354.68
3" Electric Release w/Control Valve	6523908110	3DDXFEVN	\$ 16,729.52
76MM Electric Release	6525905110	76DDXFEN	\$ 14,896.41
4" Electric Release	6524904110	4DDXFEN	\$ 15,372.15
4" Electric Release w/Control Valve	6524908110	4DDXFEVN	\$ 16,963.74
6" Electric Release	6526904110	6DDXFEN	\$ 17,088.86
6" Electric Release w/Control Valve	6526908110	6DDXFEVN	\$ 18,623.43
165MM, DDX, Valve, w/Electric	6527905110	165DDXFVN	\$ 17,088.86
8" Electric Release	6528904110	8DDXFEN	\$ 22,972.25
8" Electric Release w/Control Valve	6528908110	8DDXFEVN	\$ 26,062.05
<b>MODEL DDX - DELUGE VALVES FULLY ASSEMBLED - WET PILOT LINE TRIM</b>			
2" Wet Pilot Line	6522704010	2DDXFVN	\$ 12,834.90
2" Wet Pilot Line w/Control Valve	6522708010	2DDXFVNV	\$ 14,438.14
2-1/2" Wet Pilot Line	6521704010	25DDXFVN	\$ 12,834.90
2-1/2" Wet Pilot Line w/Control Valve	6521708010	25DDXFVNV	\$ 14,438.14
3" Wet Pilot Line	6523704010	3DDXFVN	\$ 13,293.17
3" Wet Pilot Line w/Control Valve	6523708010	3DDXFVNV	\$ 14,896.41
76MM Wet Pilot Line	6525705010	76DDXFVN	\$ 12,834.90
4" Wet Pilot Line	6524704010	4DDXFVN	\$ 13,611.77
4" Wet Pilot Line w/Control Valve	6524708010	4DDXFVNV	\$ 15,204.83
6" Wet Pilot Line	6526704010	6DDXFVN	\$ 15,328.50
6" Wet Pilot Line w/Control Valve	6526708010	6DDXFVNV	\$ 17,561.68
165MM, DDX, Valve, w/Wet Pilot	6527705010	165DDXFVN	\$ 15,328.31
8" Wet Pilot Line	6528704010	8DDXFVN	\$ 22,340.84
8" Wet Pilot Line w/Control Valve	6528708010	8DDXFVNV	\$ 26,965.79
<b>MODEL DDX - DELUGE VALVES FULLY ASSEMBLED - DRY PILOT LINE TRIM</b>			
2" Dry Pilot Line	6522804010	2DDXFDPN	\$ 15,126.28
2" Dry Pilot Line w/Control Valve	6522808010	2DDXFDPVN	\$ 16,729.52
2-1/2" Dry Pilot Line	6521804010	25DDXFDPN	\$ 15,126.28
2-1/2" Dry Pilot Line w/Control Valve	6521808010	25DDXFDPVN	\$ 16,729.52
3" Dry Pilot Line	6523804010	3DDXFDPN	\$ 15,584.56
3" Dry Pilot Line w/Control Valve	6523808010	3DDXFDPVN	\$ 17,187.79
76MM Dry Pilot Line	6525805010	76DDXFDPN	\$ 15,126.28
4" Dry Pilot Line	6524804010	4DDXFDPN	\$ 15,801.32
4" Dry Pilot Line w/Control Valve	6524808010	4DDXFDPVN	\$ 17,395.82
6" Dry Pilot Line	6526804010	6DDXFDPN	\$ 17,519.49
6" Dry Pilot Line w/Control Valve	6526808010	6DDXFDPVN	\$ 19,751.23
165MM, DDX, Valve, w/ Dry Pilot line	6527805010	165DDXFDPN	\$ 17,519.49
8" Dry Pilot Line	6528804010	8DDXFDPN	\$ 23,392.70
8" Dry Pilot Line w/Control Valve	6528808010	8DDXFDPVN	\$ 28,436.64

**Notes:**



## PRV DIAPHRAGM PRESSURE REGULATING VALVE

- See Bulletin 820
- 400 psi (27.6 Bar) Rated Pressure
- Adjusted with Pilot Operated Regulator
- Trim Includes Relief Valve
- No Trim Connections to Cover
- cULus listed and FM approved

Description	Part Number	Short Code	List Price
<b>MODEL PRV DIAPHRAGM PRESSURE REGULATING VALVES</b>			
1-1/2" Groove/Groove (ANSI/AWWA C606)	6507008000	15PRV	\$ 8,800.00
1-1/2" Flange/Flange Class 150 (ASME B16.5)	6507108000		\$ 9,600.00
1-1/2" Flange/Flange Class 300 (ASME B16.5)	6507208000		\$ 9,600.00
1-1/2" Flange/Flange PN16 (ISO 7005-2)	6507308000		\$ 9,600.00
1-1/2" NPT Thread/Thread (ANSI/ASME B1.20.1)	6507508000		\$ 9,600.00
1-1/2" ISO7-1 Thread/Thread	6507608000		\$ 9,600.00
2" Groove/Groove (ANSI/AWWA C606)	6507028000	2PRV	\$ 8,800.00
2" Flange/Flange Class 150 (ASME B16.5)	6507128000		\$ 9,600.00
2" Flange/Flange Class 300 (ASME B16.5)	6507228000		\$ 9,600.00
2" Flange/Flange PN16 (ISO 7005-2)	6507328000		\$ 9,600.00
2" NPT Thread/Thread (ANSI/ASME B1.20.1)	6507528000		\$ 9,600.00
2" ISO7-1 Thread/Thread	6507628000		\$ 9,600.00
2-1/2" Groove/Groove (ANSI/AWWA C606)	6507018000	25PRV	\$ 10,200.00
76MM,PRV,GE,PRESS REG,W/O CV VERT RED	6507078000		\$ 10,200.00
2-1/2" Flange/Flange Class 150 (ASME B16.5)	6507118000		\$ 11,100.00
2-1/2" Flange/Flange Class 300 (ASME B16.5)	6507218000		\$ 11,100.00
2-1/2" Flange/Flange PN16 (ISO 7005-2)	6507318000		\$ 11,100.00
2-1/2" NPT Thread/Thread (ANSI/ASME B1.20.1)	6507518000		\$ 11,100.00
2-1/2" ISO7-1 Thread/Thread	6507618000		\$ 11,100.00
3" Groove/Groove (ANSI/AWWA C606)	6507038000	3PRV	\$ 10,200.00
3" Flange/Flange Class 150 (ASME B16.5)	6507138000		\$ 11,100.00
3" Flange/Flange Class 300 (ASME B16.5)	6507238000		\$ 11,100.00
3" Flange/Flange PN16 (ISO 7005-2)	6507338000		\$ 11,100.00
3" NPT Thread/Thread (ANSI/ASME B1.20.1)	6507538000		\$ 11,100.00
3" ISO7-1 Thread/Thread	6507638000		\$ 11,100.00
4" Groove/Groove (ANSI/AWWA C606)	6507048000	4PRV	\$ 12,200.00
4" Flange/Flange Class 150 (ASME B16.5)	6507148000		\$ 13,300.00
4" Flange/Flange Class 300 (ASME B16.5)	6507248000		\$ 13,300.00
4" Flange/Flange PN16 (ISO 7005-2)	6507348000		\$ 13,300.00
6" Groove/Groove (ANSI/AWWA C606)	6507068000	6PRV	\$ 15,000.00
165MM Groove/Groove (ANSI/AWWA C606)	6507058000		\$ 15,000.00
6" Flange/Flange Class 150 (ASME B16.5)	6507168000		\$ 16,500.00
6" Flange/Flange Class 300 (ASME B16.5)	6507268000		\$ 16,500.00
6" Flange/Flange PN16 (ISO 7005-2)	6507368000		\$ 16,500.00

### Notes:

Part numbers shown include a 185 psi (12.8 Bar) relief valve and 300 psi (20.7 Bar) gauges. Replace the last digit in the part number as follows for other relief valve and gauge combinations:

"0"-185 psi (12.8 Bar) relief valve and 300 psi (20 Bar) gauges

"1"-260 psi (17.9 Bar) relief valve and 300 psi (20 Bar) gauges

"2"-185 psi (12.8 Bar) relief valve and 600 psi (40 Bar) gauges

"3"-260 psi (17.9 Bar) relief valve and 600 psi (40 Bar) gauges



**DDX-LP Dry Pipe Valve System**

All fully assembled valves and Trim include the Potter pressure switches

Description	Part Number	Short Code	List Price
<b>MODEL DDX LO-PRESSURE DRY PIPE - VALVE ONLY</b>			
Model DDX-LP Valve - 2"	6103022000	2DDX	\$ 7,034.71
Model DDX-LP Valve - 2-1/2"	6103022500	25DDX	\$ 7,034.71
Model DDX-LP Valve - 3"	6103030000	3DDX	\$ 7,262.44
Model DDX-LP Valve - 76MM	6103027600	76DDXMM	\$ 7,034.71
Model DDX-LP Valve - 4"	6103040026	4DDX	\$ 7,422.43
Model DDX-LP Valve - 6"	6103060024	6DDX	\$ 9,124.52
Model DDX-LP Valve - 8"	6103080001	8DDX	\$15,157.58
<b>TRIM (ONLY) - INDIVIDUAL PARTS</b>			
2", 2-1/2", 3" Individual Parts (Valve Sold Separately)	6520500010	25DDXDRLN	\$ 7,949.36
4", 6" & 8" Individual Parts (Valve Sold Separately)	6520501010	4DDXDRLN	\$ 7,949.36
<b>TRIM (ONLY) - SEGMENTALLY ASSEMBLED</b>			
2", 2-1/2" & 3" Segmentally Assembled (Valve Sold Separately)	6520502010	25DDXDRLPN	\$ 8,400.63
4", 6" & 8" Segmentally Assembled (Valve Sold Separately)	6520503010	4DDXDRLPN	\$ 8,400.63
<b>MODEL DDX ACCELERATOR &amp; TRIM KIT</b>			
Accelerator & Trim for DDX 2", 2-1/2", 3", 4" 6" & 8", Type F & LP	6501200019	AEDDXN	\$ 3,884.76
<b>MODEL DDX-LP FULLY ASSEMBLED VALVE</b>			
Model DDX-LP 2" Valve with Control Valve	6522508010	2DDXFLPVN	\$ 11,395.30
Model DDX-LP 2" Valve without Control Valve	6522504010	2DDXFLPN	\$ 9,711.90
Model DDX-LP 2-1/2" Valve with Control Valve	6521508010	25DDXFLPVN	\$ 11,395.30
Model DDX-LP 2-1/2" Valve without Control Valve	6521504010	25DDXFLPN	\$ 9,711.90
Model DDX-LP 3" Valve with Control Valve	6523508010	3DDXFLPVN	\$ 11,395.30
Model DDX-LP 3" Valve without Control Valve	6523504010	3DDXFLPN	\$ 9,711.90
Model DDX-LP 76MM Valve without Control Valve	6525505010	76DDXFLPN	\$ 9,711.90
Model DDX-LP 4" Valve with Control Valve	6524508010	4DDXFLPVN	\$12,690.22
Model DDX-LP 4" Valve without Control Valve	6524504010	4DDXFLPN	\$ 11,136.31
Model DDX-LP 6" Valve with Control Valve	6526508010	6DDXFLPVN	\$15,539.04
Model DDX-LP 6" Valve without Control Valve	6526504010	6DDXFLPN	\$12,949.20
Model DDX-LP 165MM Valve without Control Valve	6527505010	165DDXFLPN	\$12,949.20
Model DDX-LP 8" Valve with Control Valve	6528508010	8DDXFLPVN	\$21,107.20
Model DDX-LP 8" Valve without Control Valve	6528504010	8DDXFLPN	\$18,517.36



## MODEL FX DRY PIPE VALVE

- Convenient external reset; no priming water required
- See Bulletin 360
- Fully assembled valves include the Potter pressure switches
- Loose and segmented trim do not include the Potter pressure switches

Description	Part Number	Short Code	List Price
<b>MODEL FX DRY PIPE VALVE - GROOVED/GROOVED - VALVE ONLY</b>			
2(50MM),FX DRY VALVE,GE/GE,RED	6101020607	2FX	\$4,234.03
2 1/2(65MM),FX DRY VALVE,GE/GE,RED	6101025607	25FX	\$5,132.16
76MM,FX DRY VALVE,GE/GE,RED	6101076607	76MMFX	\$5,132.16
3(80MM),FX DRY VALVE,GE/GE,RED	6101030607	3FX	\$5,132.16
4(100MM),FX DRY VALVE,GE/GE,RED	6101040607	4FX	\$5,517.07
6(150MM),FX DRY VALVE,GE/GE,RED	6101060607	6FX	\$7,698.24
165MM,FX DRY VALVE,GE/GE,RED	6101065607	165MMFX	\$7,698.24
<b>MODEL FX DRY PIPE VALVE - FLANGE/GROOVED - VALVE ONLY</b>			
4(100MM),FX DRY VALVE,FL/GE,RED	6101040608	4FXFG	\$5,517.07
4(100MM),FX DRY VALVE,FL/GE,BS-E,RED	6101040609	4FXFGBS	\$5,517.07
4(100MM),FX DRY VALVE,FL/GE,PN16,RED	610104060A	4FXFGPN16	\$5,517.07
6(150MM),FX DRY VALVE,FL/GE,RED	6101060608	6FXFG	\$7,698.24
6(150MM),FX DRY VALVE,FL/GE,BS-E,RED	6101060609	6FXFGBS	\$7,698.24
6(150MM),FX DRY VALVE,FL/GE,PN16,RED	610106060A	6FXFGPN16	\$7,698.24
<b>MODEL FX DRY PIPE VALVE - FLANGE/FLANGE - VALVE ONLY</b>			
4(100MM),FX DRY VALVE,FL/FL,RED	610104060B	4FXF	\$5,517.07
4(100MM),FX DRY VALVE,FL/FL,BS-E,RED	610104060C	4FXFBS	\$5,517.07
4(100MM),FX DRY VALVE,FL/FL,PN16,RED	610104060E	4FXFPN16	\$5,517.07
6(150MM),FX DRY VALVE,FL/FL,RED	610106060B	6FXF	\$7,698.24
6(150MM),FX DRY VALVE,FL/FL,BS-E,RED	610106060C	6FXFBS	\$7,698.24
6(150MM),FX DRY VALVE,FL/FL,PN16,RED	610106060E	6FXFPN16	\$7,698.24
<b>MODEL FX TRIM ONLY - INDIVIDUAL PARTS (LOOSE)</b>			
2 BASIC DRY TRIM,FX,LOOSE	6508000001	2FXDRYL	\$1,283.04
2 1/2 & 3 BASIC DRY TRIM,FX,LOOSE	6508000002	25FXDRYL	\$1,283.04
4 & 6 BASIC DRY TRIM,FX,LOOSE	6508000003	4FXDRYL	\$1,667.95
<b>MODEL FX TRIM ONLY - SEGMENTALLY ASSEMBLED</b>			
2 BASIC DRY TRIM,FX,SEGMENTED	6508000011	2FXDRYP	\$1,796.26
2 1/2 & 3 BASIC DRY TRIM,FX,SEGMENTED	6508000012	25FXDRYP	\$1,796.26
4 & 6 BASIC DRY TRIM,FX,SEGMENTED	6508000013	4FXDRYP	\$1,924.56
<b>MODEL FX ACCELERATOR AND TRIM</b>			
FX ACCELERATOR AND TRIM KIT LOOSE	650120001A	AEFX	\$2,978.32

## Features

- Lightweight ductile iron body with compact trim
- External reset reduces setup and commissioning time
- Does not require priming water
- Available fully assembled, with or without control valve



## MODEL FX DRY PIPE VALVE

- Convenient external reset; no priming water required
- See Bulletin 360
- Fully assembled valves include the Potter pressure switches
- Loose and segmented trim do not include the Potter pressure switches

Description	Part Number	Short Code	List Price
<b>MODEL FX FULLY ASSEMBLED VALVE - GROOVED/GROOVED WITH BASIC TRIM</b>			
2(50MM),FX DRY VALVE,GE/GE,RED	6508027000	2FXFB	\$ 7,313.33
2 1/2(65MM),FX DRY VALVE,GE/GE,RED	6508017000	25FXFB	\$ 7,954.85
76MM,FX DRY VALVE,GE/GE,RED	6508077000	76MMFXFB	\$ 7,954.85
3(80MM),FX DRY VALVE,GE/GE,RED	6508037000	3FXFB	\$ 7,954.85
4(100MM),FX DRY VALVE,GE/GE,RED	6508047000	4FXFB	\$ 8,339.76
6(150MM),FX DRY VALVE,GE/GE,RED	6508067000	6FXFB	\$ 9,237.89
165MM,FX DRY VALVE,GE/GE,RED	6508057000	165MMFXFB	\$ 9,237.89
<b>MODEL FX FULLY ASSEMBLED VALVE - FLANGE/GROOVED WITH BASIC TRIM</b>			
4(100MM),FX DRY VALVE,FL/GE,PN16,RED	650804A000	4FXPN16GFB	\$ 8,339.76
4(100MM),FX DRY VALVE,FL/GE,RED	6508048000	4FXFGFB	\$ 8,339.76
6(150MM),FX DRY VALVE,FL/GE,PN16,RED	650806A000	6FXPN16GFB	\$ 9,237.89
6(150MM),FX DRY VALVE,FL/GE,RED	6508068000	6FXFGFB	\$ 9,237.89
<b>MODEL FX FULLY ASSEMBLED VALVE - FLANGE/FLANGE WITH BASIC TRIM</b>			
4(100MM),FX DRY VALVE,FL/FL,PN16,RED	650804E000	4FXPN16FFB	\$ 8,339.76
4(100MM),FX DRY VALVE,FL/FL,RED	650804B000	4FXFFB	\$ 8,339.76
6(150MM),FX DRY VALVE,FL/FL,PN16,RED	650806E000	6FXPN16FFB	\$ 9,237.89
6(150MM),FX DRY VALVE,FL/FL,RED	650806B000	6FXFFB	\$ 9,237.89
<b>MODEL FX FULLY ASSEMBLED VALVE - GROOVED/GROOVED W/CONTROL VALVE</b>			
2(50MM),FX DRY VALVE,GE/GE,RED	6508027100	2FXFBV	\$ 8,468.06
2 1/2(65MM),FX DRY VALVE,GE/GE,RED	6508017100	25FXFBV	\$ 8,468.06
76MM,FX DRY VALVE,GE/GE,RED			\$ Call
3(80MM),FX DRY VALVE,GE/GE,RED	6508037100	3FXFBV	\$ 8,468.06
4(100MM),FX DRY VALVE,GE/GE,RED	6508047100	4FXFBV	\$ 8,981.28
6(150MM),FX DRY VALVE,GE/GE,RED	6508067100	6FXFBV	\$ 10,264.32
165MM,FX DRY VALVE,GE/GE,RED	6508057100	165MMFXFBV	\$ 10,264.32

## Features

- Lightweight ductile iron body with compact trim
- External reset reduces setup and commissioning time
- Does not require priming water
- Available fully assembled, with or without control valve



## GATE VALVES

• See Bulletin 443



OSY L399GG



OSY L399FG

Description	Part Number	Short Code	List Price
<b>RELIABLE OSY - L399GG GROOVED x GROOVED GATE VALVES</b>			
RASCO,#REL-OSY-L399GG,2",300PSI,GXG	7M99004056	2ROSYGG	\$ 2,090.54
RASCO,#REL-OSY-L399GG,2.5",300PSI,GXG	7M99004057	25ROSYGG	\$ 2,171.60
RASCO,#REL-OSY-L399GG,3",300PSI,GXG	7M99004058	3ROSYGG	\$ 2,304.52
RASCO,#REL-OSY-L399GG,4",300PSI,GXG	7M99004059	4ROSYGG	\$ 2,656.07
RASCO,#REL-OSY-L399GG,6",300PSI,GXG	7M99004061	6ROSYGG	\$ 4,046.48
RASCO,#REL-OSY-L399GG,8",300PSI,GXG	7M99004062	8ROSYGG	\$ 6,663.46
RASCO,#REL-OSY-L399GG,10",300PSI,GXG	7M99004063	10ROSYGG	\$10,014.98
RASCO,#REL-OSY-L399GG,12",300PSI,GXG	7M99004064	12ROSYGG	\$14,873.82
<b>RELIABLE OSY - L399F FLANGE x FLANGE GATE VALVES</b>			
RASCO,#REL-OSY-L399F,2",300PSI,FXF	7M99004038	2ROSY	\$ 2,090.54
RASCO,#REL-OSY-L399F,2.5",300PSI,FXF	7M99004039	25ROSY	\$ 2,171.60
RASCO,#REL-OSY-L399F,3",300PSI,FXF	7M99004040	3ROSY	\$ 2,304.52
RASCO,#REL-OSY-L399F,4",300PSI,FXF	7M99004041	4ROSY	\$ 2,656.07
RASCO,#REL-OSY-L399F,6",300PSI,FXF	7M99004043	6ROSY	\$ 4,046.48
RASCO,#REL-OSY-L399F,8",300PSI,FXF	7M99004044	8ROSY	\$ 6,663.46
RASCO,#REL-OSY-L399F,10",300PSI,FXF	7M99004045	10ROSY	\$10,014.98
RASCO,#REL-OSY-L399F,12",300PSI,FXF	7M99004046	12ROSY	\$14,873.82
<b>RELIABLE OSY - L399FG FLANGE x GROOVED GATE VALVES</b>			
RASCO,#REL-OSY-L399FG,2",300PSI,FXG	7M99004047	2ROSYFG	\$ 2,090.54
RASCO,#REL-OSY-L399FG,2.5",300PSI,FXG	7M99004048	25ROSYFG	\$ 2,171.60
RASCO,#REL-OSY-L399FG,3",300PSI,FXG	7M99004049	3ROSYFG	\$ 2,304.52
RASCO,#REL-OSY-L399FG,4",300PSI,FXG	7M99004050	4ROSYFG	\$ 2,656.07
RASCO,#REL-OSY-L399FG,6",300PSI,FXG	7M99004052	6ROSYFG	\$ 4,046.48
RASCO,#REL-OSY-L399FG,8",300PSI,FXG	7M99004053	8ROSYFG	\$ 6,663.46
RASCO,#REL-OSY-L399FG,10",300PSI,FXG	7M99004054	10ROSYFG	\$10,014.98
RASCO,#REL-OSY-L399FG,12",300PSI,FXG	7M99004055	12ROSYFG	\$14,873.82
<b>RELIABLE PIUP - 388 INDICATOR POST UNDERGROUND TYPE</b>			
RASCO,#REL-PIUP-388,VERTICAL IND POST	7M99003232	RVPI	\$ 5,077.75
<b>RELIABLE W388 INDICATOR POST WALL TYPE</b>			
RASCO,#REL-PIW-388,WALL-TYPE IND POST	7M99003233	RWPI	\$ 3,385.18
RASCO,STEM/COUP UNIT,WALL-TYPE IND POST	7M99003657	STEMRWPI	\$ 421.89
<b>RELIABLE REPLACEMENT HANDWHEEL</b>			
RASCO,REPL.HANDWHEEL,2"-2.5" OSY	7M99003825		\$ 166.72
RASCO,REPL.HANDWHEEL,5"-6" OSY	7M99003826		\$ 199.57
RASCO,REPL.HANDWHEEL,8" OSY	7M99003827		\$ 250.10
RASCO,REPL.HANDWHEEL,10",OSY	7M99003828		\$ 517.88
RASCO,REPL.HANDWHEEL,WALL POST IND	7M99003829		\$ 517.88
<b>RELIABLE FCV - L501F SWING CHECK VALVE</b>			
RASCO,#REL-FCV-L501F,2",300PSI,FXF,CHK	7M99004094	2CVF	\$ 1,508.48
RASCO,#REL-FCV-L501F,2.5",300PSI,FXF,CHK	7M99004095	25CVF	\$ 1,765.54
RASCO,#REL-FCV-L501F,3",300PSI,FXF,CHK	7M99004096	3CVF	\$ 2,207.72
RASCO,#REL-FCV-L501F,4",300PSI,FXF,CHK	7M99004097	4CVF	\$ 3,249.79
RASCO,#REL-FCV-L501F,6",300PSI,FXF,CHK	7M99004099	6CVF	\$ 5,806.87
RASCO,#REL-FCV-L501F,8",300PSI,FXF,CHK	7M99004100	8CVF	\$ 9,902.95
RASCO,#REL-FCV-L501F,10",300PSI,FXF,CHK	7M99004101	10CVF	\$14,287.96
RASCO,#REL-FCV-L501F,12",300PSI,FXF,CHK	7M99004102	12CVF	\$19,878.61

## GATE VALVES / RELIABLE PIV

Description	Part Number	Short Code	List Price
<b>RELIABLE PIV - L388F FLANGE x FLANGE GATE VALVES</b>			
RASCO,#REL-PIV-L388F,2",300PSI,FXF	7M99004065	2RPIV	\$ 2,577.92
RASCO,#REL-PIV-L388F,2.5",300PSI,FXF	7M99004066	25RPIV	\$ 2,577.92
RASCO,#REL-PIV-L388F,3",300PSI,FXF	7M99004067	3RPIV	\$ 2,577.92
RASCO,#REL-PIV-L388F,4",300PSI,FXF	7M99004068	4RPIV	\$ 2,577.92
RASCO,#REL-PIV-L388F,6",300PSI,FXF	7M99004070	6RPIV	\$ 3,929.31
RASCO,#REL-PIV-L388F,8",300PSI,FXF	7M99004071	8RPIV	\$ 6,522.93
RASCO,#REL-PIV-L388F,10",300PSI,FXF	7M99004072	10RPIV	\$ 9,764.88
RASCO,#REL-PIV-L388F,12",300PSI,FXF	7M99004073	12RPIV	\$ 13,493.67
<b>RELIABLE PIV - L388FG FLANGE x GROOVED GATE VALVES</b>			
RASCO,#REL-PIV-L388FG,2",300PSI,FXG	7M99004074	2RPIVFG	\$ 2,577.92
RASCO,#REL-PIV-L388FG,2.5",300PSI,FXG	7M99004075	25RPIVFG	\$ 2,577.92
RASCO,#REL-PIV-L388FG,3",300PSI,FXG	7M99004076	3RPIVFG	\$ 2,577.92
RASCO,#REL-PIV-L388FG,4",300PSI,FXG	7M99004077	4RPIVFG	\$ 2,577.92
RASCO,#REL-PIV-L388FG,8",300PSI,FXG	7M99004080	8RPIVFG	\$ 6,522.93
RASCO,#REL-PIV-L388FG,10",300PSI,FXG	7M99004081	10RPIVFG	\$ 9,764.88
RASCO,#REL-PIV-L388FG,12",300PSI,FXG	7M99004082	12RPIVFG	\$ 13,493.67
<b>RELIABLE PIV - L388GG GROOVED x GROOVED GATE VALVES</b>			
RASCO,#REL-PIV-L388GG,2.5",300PSI,GXG	7M99004086	25RPIVGG	\$ 2,577.92
RASCO,#REL-PIV-L388GG,3",300PSI,GXG	7M99004087	3RPIVGG	\$ 2,577.92
RASCO,#REL-PIV-L388GG,4",300PSI,GXG	7M99004088	4RPIVGG	\$ 2,577.92
RASCO,#REL-PIV-L388GG,6",300PSI,GXG	7M99004090	6RPIVGG	\$ 3,929.31
RASCO,#REL-PIV-L388GG,8",300PSI,GXG	7M99004091	8RPIVGG	\$ 6,522.93
RASCO,#REL-PIV-L388GG,10",300PSI,GXG	7M99004092	10RPIVGG	\$ 9,764.88
RASCO,#REL-PIV-L388GG,12",300PSI,GXG	7M99004093	12RPIVGG	\$ 13,493.67
<b>RELIABLE RBVT THREADED BRONZE BUTTERFLY VALVE</b>			
RASCO,#REL-BBVT1,1",THRD,300PSI	7M99004562	B1R	\$ 731.16
RASCO,#REL-BBVT125,1.25",THRD,300PSI	7M99004563	B125R	\$ 788.70
RASCO,#REL-BBVT15,1.5",THRD,300PSI	7M99004564	B15R	\$ 844.19
RASCO,#REL-BBVT2,2",THRD,300PSI	7M99004565	B2R	\$ 994.58
RASCO,#REL-BBVT25,2.5",THRD,300PSI	7M99004566	B25R	\$ 1,268.15
<b>RELIABLE RBVG GROOVED BRONZE VALVE</b>			
RASCO,#REL-BBVG125,1.25",GRV,300PSI	7M99004567	BG125R	\$ 824.55
RASCO,#REL-BBVG15,1.5",GRV,300PSI	7M99004568	BG15R	\$ 874.50
RASCO,#REL-BBVG2,2",GRV,300PSI	7M99004569	BG2R	\$ 987.83
RASCO,#REL-BBVG25,2.5",GRV,300PSI	7M99004570	BG25R	\$ 1,159.56
<b>RELIABLE REPLACEMENT HANDWHEEL</b>			
RASCO,REPL.HANDWHEEL,2"-2.5" OSY	7M99003825		\$ 166.72
RASCO,REPL.HANDWHEEL,5"-6" OSY	7M99003826		\$ 199.57
RASCO,REPL.HANDWHEEL,8" OSY	7M99003827		\$ 250.10
RASCO,REPL.HANDWHEEL,10",OSY	7M99003828		\$ 517.88
RASCO,REPL.HANDWHEEL,WALL POST IND	7M99003829		\$ 517.88
<b>RELIABLE FCV - L501F SWING CHECK VALVE</b>			
RASCO,#REL-FCV-L501F,2",300PSI,FXF,CHK	7M99004094	2CVF	\$ 1,508.48
RASCO,#REL-FCV-L501F,2.5",300PSI,FXF,CHK	7M99004095	25CVF	\$ 1,765.54
RASCO,#REL-FCV-L501F,3",300PSI,FXF,CHK	7M99004096	3CVF	\$ 2,207.72
RASCO,#REL-FCV-L501F,4",300PSI,FXF,CHK	7M99004097	4CVF	\$ 3,249.79
RASCO,#REL-FCV-L501F,6",300PSI,FXF,CHK	7M99004099	6CVF	\$ 5,806.87
RASCO,#REL-FCV-L501F,8",300PSI,FXF,CHK	7M99004100	8CVF	\$ 9,902.95
RASCO,#REL-FCV-L501F,10",300PSI,FXF,CHK	7M99004101	10CVF	\$ 14,287.96
RASCO,#REL-FCV-L501F,12",300PSI,FXF,CHK	7M99004102	12CVF	\$ 19,878.61



**RBVT THREADED  
BUTTERFLY VALVE**

• See Bulletin 830



**RBVG GROOVED  
BRONZE VALVE**

## RELIABLE BUTTERFLY VALVES



**REL300GT  
 BUTTERFLY VALVE  
 - NORMALLY OPEN**

• See Bulletin 833



**REL300GT  
 BUTTERFLY VALVE  
 - NORMALLY  
 CLOSED**

• See Bulletin 833



**REL363GT  
 BUTTERFLY VALVE  
 - NORMALLY OPEN**

• See Bulletin 835



**REL363GT  
 BUTTERFLY VALVE  
 - NORMALLY  
 CLOSED**

• See Bulletin 835

Description	Part Number	Short Code	List Price
<b>RELIABLE BFG-300GT BUTTERFLY VALVES   NORMALLY OPEN</b>			
RASCO,#REL300GT,2 1/2",GRV BFV	7M99004895	25RBG300T	\$ 880.64
RASCO,#REL300GT,3",GRV BFV	7M99004896	3RBG300T	\$ 913.65
RASCO,#REL300GT,4",GRV BFV	7M99004897	4RBG300T	\$ 1,032.79
RASCO,#REL300GT,6",GRV BFV	7M99004898	6RBG300T	\$ 1,488.09
RASCO,#REL300GT,8",GRV BFV	7M99004899	8RBG300T	\$ 1,971.67
<b>RELIABLE BFG-300GTC BUTTERFLY VALVES   NORMALLY CLOSED</b>			
RASCO,#REL300GTC,2 1/2",GRV BFV,NC	7M99004900	25RBG300NCT	\$ 906.88
RASCO,#REL300GTC,3",GRV BFV,NC	7M99004901	3RBG300NCT	\$ 931.65
RASCO,#REL300GTC,4",GRV BFV,NC	7M99004902	4RBG300NCT	\$ 1,057.90
RASCO,#REL300GTC,6",GRV BFV,NC	7M99004903	6RBG300NCT	\$ 1,506.62
RASCO,#REL300GTC,8",GRV BFV,NC	7M99004904	8RBG300NCT	\$ 1,992.25

Description	Part Number	Short Code	List Price
<b>RELIABLE BFG-363GT BUTTERFLY VALVES   NORMALLY OPEN</b>			
RASCO,#REL363GT,2",GRV BFV	7M99004960	2RBG363T	\$ 896.22
RASCO,#REL363GT,2 1/2",GRV BFV	7M99004905	25RBG363T	\$ 896.22
RASCO,#REL363GT,3",GRV BFV	7M99004906	3RBG363T	\$ 929.82
RASCO,#REL363GT,4",GRV BFV	7M99004907	4RBG363T	\$ 1,041.84
RASCO,#REL363GT,6",GRV BFV	7M99004908	6RBG363T	\$ 1,501.15
RASCO,#REL363GT,8",GRV BFV	7M99004909	8RBG363T	\$ 1,971.67
RASCO,#REL363GT,10",GRV BFV	7M99004959	10RBG363T	\$ 3,694.71
<b>RELIABLE BFG-363GTC BUTTERFLY VALVES   NORMALLY CLOSED</b>			
RASCO,#REL363GTC,2",GRV BFV,NC	7M99004961	2RBG363NCT	\$ 922.93
RASCO,#REL363GTC,2 1/2",GRV BFV,NC	7M99004910	25RBG363NCT	\$ 922.93
RASCO,#REL363GTC,3",GRV BFV,NC	7M99004911	3RBG363NCT	\$ 948.15
RASCO,#REL363GTC,4",GRV BFV,NC	7M99004912	4RBG363NCT	\$ 1,057.88
RASCO,#REL363GTC,6",GRV BFV,NC	7M99004913	6RBG363NCT	\$ 1,506.62
RASCO,#REL363GTC,8",GRV BFV,NC	7M99004914	8RBG363NCT	\$ 1,992.25
RASCO,#REL363GTC,10",GRV BFV,NC	7M99004966	10RBG363NCT	\$ 3,694.71

**Notes:**

Specify the following when ordering:  
 Supervision  
 - Valve Supervised Open  
 - Valve Supervised Closed

Items shown on this sheet may not be stocked at all Reliable warehouses. Please contact your local Reliable Warehouse for Availability. Refer to technical data sheets for specific listings, approvals and design parameters.



**Model B-1 Accelerator**

## VALVES ACCESSORIES

- See Bulletins 250, 251, 320 & 322



## NITROGEN MAINTENANCE DEVICES

- NS-PaK and NS-ASAM
- See Bulletin 254

## ACD Dry System Auxiliary Condensate Drain w-Sight Glass

- See Bulletin 441

Description	Part Number	Short Code	List Price
<b>MODEL B1 ACCELERATOR</b>			
B1 Accelerator	6301000300	AE	\$2,727.82
B2 Accelerator Trim	6516000002	ACT	\$1,121.69
Replacement Parts Kit - B1	6888000100	B1RPK	\$ 926.73
<b>DRY VALVE TRIM ACCESSORIES</b>			
Fill Line- Model A (2-1/2")			\$ Call
Fill Line- Model D (4 & 6")			\$ Call
Priming Chamber	6501080100	PCG	\$ 619.76
<b>AIR MAINTENANCE DEVICE</b>			
A Owner's Air (factory set 10psi)	6304001110	AMDA10	\$1,712.35
A Owner's Air (factory set 23psi)	6304001123	AMDA23	\$1,712.35
B Air Compressor Control Assembly	6304012100	AMDB	\$1,945.13
<b>PRESSURE ALARM SWITCHES</b>			
EPS10-1 Alarm, Single SPDT (System Sensor)- Set 4-8PSI	6999991339	EPS10-1	\$ 339.00
EPS10-2 Alarm, Double SPDT (System Sensor)- Set 4-8PSI	6999991212	EPS10-2	\$ 385.00
EPS40-1 Supervisory, Single SPDT- Adj 10-100PSI	6999991213	EPS40-1	\$ 339.00
EPS40-2 High/Low Supervisory Double SPDT- Adj 10-100PSI	6999991340	EPS40-2	\$ 385.00
<b>VALVE SEAT WRENCHES</b>			
2-1/2" & 4" Model D Dry Pipe Valve	6881340000	W4DPV	\$ 265.23
6" Model D Dry Pipe Valve	6881360000	W6DPV	\$ 288.30

Description	Part Number	Short Code	List Price
<b>NS-PAK</b>			
NS-PaK Nitrogen Regulator System	6704030021	NSPAK	\$10,710.17
<b>NS-ASAM</b>			
Nitrogen Maintenance Device with Pressure Switch	6704030022	NSASAM	\$ 7,140.12
<b>NITROGEN REGULATING DEVICE</b>			
Nitrogen Regulating Device w/ Switch	6304030101		\$ 2,141.52
Nitrogen Regulating Device w/o Switch	6304030100		\$ 1,630.88

Description	Part Number	Short Code	List Price
<b>DRY SYSTEM AUXILIARY CONDENSATE DRAIN</b>			
ACD Dry System Auxiliary Condensate Drain w- Sight Glass	6501190000	ACD	\$ 938.25



**MODEL C  
 ELECTRIC  
 ACCELERATOR**

- See Bulletin 325

Description	Part Number	Short Code	List Price
<b>ELECTRONIC ACCELERATORS</b>			
Electronic Accelerator	6301000400	AEC	\$ 8,470.00
Electronic Accelerator Trim Kit FX	650120001B		\$ 2,200.00
Electronic Accelerator Trim Kit DDX	650120001C		\$ 1,430.00
BATTERY,12V/5AH,SLA,F1 TERMINAL	6611112200		\$ 149.88

Description	Part Number	Short Code	List Price
<b>STRUT CLAMPS</b>			
PHD,#2007,2",STRUT CLAMP	7M99002013	SC2PHD	\$ 14.54
PHD,#2008,2.5",STRUT CLAMP	7M99002014	SC25PHD	\$ 16.43
PHD,#2009,3",STRUT CLAMP	6990011077	SC3PHD	\$ 17.76
PHD,#2011,4",STRUT CLAMP	6990011078	SC4PHD	\$ 23.31
PHD,#2013,6",STRUT CLAMP	7M99002015	SC6PHD	\$ 45.74
PHD,#2014,8",STRUT CLAMP	7M99002016	SC8PHD	\$ 95.82



### TD TEST AND DRAIN

- See Bulletin 618
- Optional Pressure Relief Kit



### PRESSURE RELIEF TRIM KITS

- See Bulletin 618



### A PRESSURE RELIEF VALVE

- See Bulletin 257



### AAV AUTOMATIC AIR VENT

- **Stainless Steel Construction**
- **175 psi and 300 psi option**
- See Bulletin 620

Description	K-Factor	Part Number	Short Code	List Price
<b>MODEL TD TEST AND DRAIN - THREADED</b>				
RASCO T&D,1",THRD,2.8K,300PSI,UL/FM	K2.8 (40)	7M99003865	RTD128	\$ 536.65
RASCO T&D,1",THRD,4.2K,300PSI,UL/FM	K4.2 (60)	7M99003866	RTD142	\$ 536.65
RASCO T&D,1",THRD,5.6K,300PSI,UL/FM	K5.6 (80)	7M99003867	RTD156	\$ 536.65
RASCO T&D,1.25",THRD,2.8K,300PSI,UL/FM	K2.8 (40)	7M99004558	RTD12528	\$ 712.97
RASCO T&D,1.25",THRD,4.2K,300PSI,UL/FM	K4.2 (60)	7M99003868	RTD12542	\$ 712.97
RASCO T&D,1.25",THRD,5.6K,300PSI,UL/FM	K5.6 (80)	7M99003869	RTD12556	\$ 712.97
RASCO T&D,1.25",THRD,8.0K,300PSI,UL/FM	K8.0 (115)	7M99003870	RTD12580	\$ 712.97
RASCO T&D,1.25",THRD,11.2K,300PSI,UL/FM	K11.2 (160)	7M99003871	RTD125112	\$ 712.97
RASCO T&D,2",THRD,2.8K,300PSI,UL/FM	K2.8 (40)	7M99004560	RTD228	\$1,209.68
RASCO T&D,2",THRD,4.2K,300PSI,UL/FM	K4.2 (60)	7M99004510	RTD242	\$1,209.68
RASCO T&D,2",THRD,5.6K,300PSI,UL/FM	K5.6 (80)	7M99003872	RTD256	\$1,209.68
RASCO T&D,2",THRD,8.0K,300PSI,UL/FM	K8 (115)	7M99003873	RTD280	\$1,209.68
RASCO T&D,2",THRD,11.2K,300PSI,UL/FM	K11.2 (160)	7M99003874	RTD2112	\$1,209.68
RASCO T&D,2",THRD,16.8K,300PSI,UL/FM	K16.8 (240)	7M99003875	RTD2168	\$1,209.68
<b>MODEL TD TEST AND DRAIN - GROOVED X THREADED</b>				
RASCO T&D,1.25",GXT,2.8K,300PSI,UL/FM	K2.8 (40)	7M99004559	RTD12528GT	\$ 751.67
RASCO T&D,1.25",GXT,4.2K,300PSI,UL/FM	K4.2 (60)	7M99004106	RTD12542GT	\$ 751.67
RASCO T&D,1.25",GXT,5.6K,300PSI,UL/FM	K5.6 (80)	7M99004107	RTD12556GT	\$ 751.67
RASCO T&D,1.25",GXT,8.0K,300PSI,UL/FM	K8.0 (115)	7M99004108	RTD12580GT	\$ 751.67
RASCO T&D,1.25",GXT,11.2K,300PSI,UL/FM	K11.2 (160)	7M99004109	RTD125112GT	\$ 751.67
RASCO T&D,2",GXT,2.8K,300PSI,UL/FM	K2.8 (40)	7M99004561	RTD228GT	\$1,318.21
RASCO T&D,2",GXT,4.2K,300PSI,UL/FM	K4.2 (60)	7M99004540	RTD242GT	\$1,318.21
RASCO T&D,2",GXT,5.6K,300PSI,UL/FM	K5.6 (80)	7M99004110	RTD256GT	\$1,318.21
RASCO T&D,2",GXT,8.0K,300PSI,UL/FM	K8.0 (115)	7M99004111	RTD280GT	\$1,318.21
RASCO T&D,2",GXT,11.2K,300PSI,UL/FM	K11.2 (160)	7M99004112	RTD2112GT	\$1,318.21
RASCO T&D,2",GXT,16.8K,300PSI,UL/FM	K16.8 (240)	7M99004113	RTD2168GT	\$1,318.21

Description	Part Number	Short Code	List Price
<b>MODEL A PRESSURE RELIEF VALVE - NPT</b>			
MOD A 175 PSI PRESSURE RELIEF VLV 1/2NPT	6501000001	PRV175	\$ 107.00
A Pressure Relief Valve, 185 psi, 1/2 NPT	6501000002	PRV185	\$ 107.00
A Pressure Relief Valve, 210 psi, 1/2 NPT	6501000003	PRV210	\$ 160.50
A Pressure Relief Valve, 260 psi, 1/2 NPT	6501000004	PRV260	\$ 160.50
A Pressure Relief Valve, 310 psi, 1/2 NPT	6501000005	PRV310	\$ 160.50
<b>MODEL A PRESSURE RELIEF VALVE - BSPT</b>			
MOD A 175PSI PRESSURE RELIEF VLV 1/2BSPT	6501000006		\$ 107.00
MOD A PRESSURE RELIEF VLV 185PSI 1/2BSPT	6501000007		\$ 107.00
MOD A 210PSI PRESSURE RELIEF VLV 1/2BSPT	6501000008		\$ 160.50
MOD A 260PSI PRESSURE RELIEF VLV 1/2BSPT	6501000009		\$ 160.50
MOD A 310PSI PRESSURE RELIEF VLV 1/2BSPT	6501000010		\$ 160.50
<b>MODEL AAV AUTOMATIC AIR VENT</b>			
AAV-S,AUTOMATIC AIR VENT, 175 PSI	6301600000	AAV175	\$2,330.86
AAV-S,AUTOMATIC AIR VENT, 300 PSI	6301600001	AAV300	\$4,920.70

Description	Part Number	Short Code	List Price
<b>PRESSURE RELIEF TRIM KITS</b>			
Pressure Relief Kit - 175 psi	6501203550	PRT175	\$ 250.53
Pressure Relief Kit - 185 psi	6501203545	PRT185	\$ 250.53
Pressure Relief Kit - 210 psi	6501213550	PRT210	\$ 250.53
Pressure Relief Kit - 260 psi	6501203546	PRT260	\$ 375.80
Pressure Relief Kit - 310 psi	6501203547	PRT310	\$ 375.80



**QRM RISER &  
 TANK MOUNTED  
 AIR  
 COMPRESSORS**

- See Bulletin 256

Description	Part Number	Short Code	List Price
<b>QRM2 AIR COMPRESSORS - TANKLESS w/CHECK VALVE &amp; PRESSURE SWITCH: LOW PRESSURE</b>			
RASCO AIR,QRM2-25115 1/4HP,115,TANKLESS	6872000001		\$ 3,619.82
RASCO AIR,QRM2-25220 1/4HP,220,TANKLESS	6872000002		\$ 3,578.39
RASCO AIR,QRM2-50115 1/2HP,115,TANKLESS	6872000005		\$ 4,484.64
RASCO AIR,QRM2-50220 1/2HP,220,TANKLESS	6872000006		\$ 4,676.25
RASCO AIR,QRM2-25220-50HZ,1/4,220,TNKLSS	6872000011		\$ 3,578.39
RASCOAIR,QRM2-50220-50HZ,1/2,220,TNKLSS	6872000013		\$ 4,676.25
<b>QRM2 AIR COMPRESSORS - TANKLESS w/CHECK VALVE &amp; PRESSURE SWITCH: CONVENTIONAL PRESSURE</b>			
RASCO AIR,QRM2-25115-4050 1/4HP,115,TL	6872000040		\$ 3,303.93
RASCO AIR,QRM2-50115-4050 1/2HP,115,TL	6872000042		\$ 4,484.64
RASCO AIR,QRM2-25220-4050 1/4HP,220,TL	6872000041		\$ 3,578.39
RASCO AIR,QRM2-50220-4050 1/2HP,220,TL	6872000043		\$ 4,676.25
<b>QRM2 AIR COMPRESSORS - TANK MOUNTED</b>			
RASCO AIR,QRM2-25115T 1/4HP,115,TANK	6872000003		\$ 5,230.36
RASCO AIR,QRM2-25220T 1/4HP,220,TANK	6872000004		\$ 5,598.04
RASCO AIR,QRM2-50115T 1/2HP,115,TANK	6872000007		\$ 5,955.36
RASCO AIR,QRM2-50220T 1/2HP,220,TANK	6872000008		\$ 6,209.11
RASCO AIR,QRM2-100115T,1 HP,115,TANK	6872000009		\$ 8,627.50
RASCO AIR,QRM2-100220T,1 HP,220,TANK	6872000010	1QRM220T	\$ 8,373.75
RASCO AIR,QRM2-25220T-50HZ,1/4,220,TANK	6872000012		\$ 5,598.04
RASCO AIR,QRM2-50220T-50HZ,1/2,220,TANK	6872000014		\$ 6,209.11
RASCO AIR,QRM2-100220T-50HZ,1,220,TANK	6872000015		\$ 8,373.75
<b>CONNECTION KITS</b>			
CONNECTION KIT, TANKLESS COMPRESSOR	650120011G	CKTL	\$ 1,200.00
CONNECTION KIT, TANK MOUNTED COMPRESSOR	650120011H	CKTM	\$ 1,322.95
<b>FLEX HOSE ONLY</b>			
FLEX HOSE, STAINLESS STEEL, 1/2" x 30"			\$ Call



### RRM RISER MOUNTED AIR COMPRESSOR

- See Bulletin 258



### RTM TANK MOUNTED AIR COMPRESSOR

- See Bulletin 258

Description	Part Number	Short Code	List Price
<b>RRM AIR COMPRESSORS - RISER MOUNTED</b>			
RASCO AIR,RRMA23016-2026,1/6HP,115/220V	6990027979		\$ 3,205.54
RASCO AIR,RRMA40033-2026,1/3HP,115/220V	6990027980		\$ 3,801.07
RASCO AIR,RRMA70050-2026,1/2HP,115/220V	6990027981		\$ 5,028.39
RASCO AIR,RRMA23016-4050,1/6HP,115,CP	6990027982		\$ 3,205.54
RASCO AIR,RRMA40033-4050,1/3HP,115,CP	6990027983		\$ 3,801.07
RASCO AIR,RRMA70050-4050,1/2HP,115,CP	6990027984		\$ 5,028.39
<b>RTM AIR COMPRESSORS - TANK MOUNTED</b>			
RASCO AIR,RTMA25033-80100,1/3HP,115/220V	6990027985		\$ 5,882.86
RASCO AIR,RTMA36575-80100,3/4HP,115/220V	6990027986		\$ 8,430.71
RASCO AIR,RTMA550100-80100,1HP,115/220V	6990027987		\$ 10,502.14
RASCO AIR,RTMA915150-80100,1-1/2HP,1PH	6990027988		\$ 13,743.93
RASCO AIR,RTMA1100200-80100,2HP,1PH	6990027989		\$ 15,660.00
<b>CONNECTION KITS</b>			
Connection Kit, Tankless Compressor	650120011G	CKTL	\$ 1,200.00
Connection Kit, Tank Mounted Compressor	650120011H	CKTM	\$ 1,322.95
<b>FLEX HOSE -- SOLD SEPARATELY</b>			
Flex Hose, Stainless Steel, 1/2" x 30"			\$ Call

### Features

- Three riser mount tank-less options (RRM)
- Five tank mounted options (RTM)
- Quiet oil-less piston compressors
- UL Listed pressure switch
- Flexile connection kits

### Notes:

1. Models 16RRM, 13RRM, and 12RRM are preset at 20 psi start/26 psi stop for use with low pressure systems such as the Model DDX-LP and Model EX.
2. Models 16RRM4050, 13RRM4050, and 12RRM4050 are preset at 40 psi start/50 psi stop for use with conventional differential valves such as the Model FX and Model D.



## AIR COMPRESSORS



Description	Part Number	Short Code	List Price
<b>GAST AIR COMPRESSORS -- BARE</b>			
1/6 HP, 115-60-1, Gast 1LAA-10-M100X	6999990904	16A	\$ 1,921.41
1/4 HP, 115-60-1, Gast 2LAF-10-M200X	6999991538	14A	\$ 2,033.52
1/3 HP, 115-60-1, Gast 3LBA-33-M300X			\$ Call
1/2 HP, 115-60-1, Gast 4LCB-10-M450X	6999991518	12A	\$ 3,019.07
3/4 HP, 115/230-60-1, Gast 5LCA-23-550NGX			\$ Call
1 HP, 115/230-60-1, Gast 6LCF-10-M616X	6999991315	1A	\$ 3,780.36
1-1/2 HP, 115/230-60-1, Gast 7LDE-10-M700X	6702000150	112A	\$ 6,773.36
2 HP, 115/230-60-1, Gast 8LDF-10-M850X			\$ Call
<b>GAST AIR COMPRESSORS WITH CHECK VALVE AND PRESSURE SWITCH</b>			
1/6 HP, 115-60-1, Gast 1LAA-32-M100X			\$ Call
1/4 HP, 115-60-1, Gast 2LAF-12-M200X			\$ Call
1/3 HP, 115-60-1, Gast 3LBA-32-M300X			\$ Call
1/2 HP, 115-60-1, Gast 4LCB-21-M450X			\$ Call
3/4 HP, 115/230-60-1, Gast 5LCA-22-M550X			\$ Call
1 HP, 115/230-60-1, Gast 6LCF-13-M616X			\$ Call
1-1/2 HP, 115/230-60-1, Gast 7LDE-16-M750X			\$ Call
2 HP, 115/230-60-1, Gast 8LDF-16-M850X			\$ Call
<b>GAST AIR COMPRESSORS -- TANK MOUNTED</b>			
1/6 HP, 115-60-1, Gast 1HAB-11T-M100X, 2 GAL	6999991027	16TA	\$ 3,780.36
1/4 HP, 115-60-1, Gast 2LAF-11T-M200X, 12 GAL			\$ Call
1/2 HP, 115-60-1, Gast 4LCB-11T-M450X, 20 GAL			\$ Call
3/4 HP, 115/230-60-1, Gast 5LCA-11T-M550X, 20 GAL			\$ Call
1 HP, 115/230-60-1, Gast 6LCF-11T-M616X, 30 GAL			\$ Call
1-1/2 HP, 115/230-60-1, Gast 7LDE-11T-M750X, 30 GAL	6999991567	112TA	\$ 11,883.36
2 HP, 115/230-60-1, Gast 8LDF-11TC-M850X, 30GAL			\$ Call
<b>GAST AIR COMPRESSORS -- REPAIR KITS *</b>			
3/4 HP, Repair Kit	6888000020	K263	\$ 499.84
1-1/2 HP, Repair Kit	6888000030	K303	\$ 803.63
Riser Mounting Brackets #AT670	6999990969	GMB	\$ 217.07
Riser Mounting Brackets #AT670A	6990007698	GMBL	\$ 466.68

\*Repair Kit Contains: Gaskets, Piston, Seals, Piston Rings, In/Out Valve Plates, Manifold Seals and Felts (for Filters)



Description	System Capacity	Part Number	Short Code	List Price
<b>C-AIRE HEAVY DUTY - SINGLE PHASE - TANK MOUNTED</b>				
S175-HD1-115 (115V, 1HP, 3 GALLON)	175 gallons	6990012386	C175	\$ 4,006.45
S265H-HD1-115 (115V, 1-1/2 HP, 3 GALLON)	265 gallons	6990012600	C265	\$ 4,080.40
S325H-HD1-115 (115V, 1-1/2 HP, 3 GALLON)	325 gallons	6990012601	C325	\$ 4,185.32
S500H-HD1-115 (115V, 1-1/2 HP, 30 GALLON)	500 gallons	6990012602	C500	\$ 6,397.19
S750H-HD1-230 (3HP,230V,30 GALLON H)	750 gallons	6990013997	C750	\$ 7,302.82
S900H-HD1-230 (5HP,230V,30 GALLON H)	900 gallons	6990013998	C900	\$ 7,468.33
S1300H-HD1-230S (5HP,230V,60 GALLON H)	1300 gallons	6990013999	C1300	\$ 12,619.56
S1700H-HD1-230S (7.5HP,230V,60 GALLON H)	1700 gallons	6990014000	C1700	\$ 13,344.82
<b>C-AIRE STANDARD DUTY - SINGLE PHASE - TANK MOUNTED</b>				
S300H-SD1-115 (1HP,115V,3 GALLON H)	300 gallons	6990013994	C300	\$ 3,405.48

## AIR COMPRESSORS



Description	System Capacity	Part Number	Short Code	List Price
<b>GAST AIR COMPRESSORS - BARE</b>				
1/6 HP, 115-60-1, 1LAA-10-M100X	90 Gallons	6999990904	16A	\$1,921.41
1/4 HP, 115-60-1, 2LAF-10-M200X	150 Gallons	6999991538	14A	\$2,033.52
1/3 HP, 115-60-1, 3LBA-33-M300X	180 Gallons			\$ Call
1/2 HP, 115-60-1, 4LCB-10-M450X	300 Gallons	6999991518	12A	\$3,019.07
3/4 HP, 115/208-230-60-1, 5LCA-23-550NGX	400 Gallons			\$ Call
1 HP, 115/230-60-1, 6LCF-10-M616NEX	600 Gallons	6999991315	1A	\$3,780.36
1.5 HP, 115/230-60-1, 7LDE-10-M700X	800 Gallons	6702000150	112A	\$6,773.36
2 HP, 115/230-60-1, 8LDF-10-M850X	1000 Gallons			\$ Call

\*Above models can be outfitted with accessories of your own such as pressure switch, check valve, air tank and can also be used with a Model B Pressure Maintenance Device to set supervisory pressure settings. Voltage and power example above: 115-60-1 = 115 volts 60Hz 1-phase power

Description	System Capacity	Part Number	Short Code	List Price
<b>GAST ROCKING PISTON AIR COMPRESSORS WITH SURGE TANK, CHECK VALVE AND DIGITAL PRESSURE SWITCH</b>				
1/2 HP, 115-60-1, 87R-110S	See below			\$ Call

\*Above model features a digital pressure switch with adjustable pressure settings from 10 PSI up to 50 PSI and with a 5 PSI differential. Ultra quiet compressor and fast install Unistrut rail design for mounting to a riser. All mounting hardware and airline hose connector included. Use adjustable pressure settings for system pressure, or with a Model A Pressure Maintenance Device to set supervisory pressure settings. Voltage and power example above: 115-60-1 = 115 volts 60Hz 1-phase power. System Capacity (gallons) ratings: 10 PSI Cut-out = 1,350 Gallons; 18 PSI Cut-out = 725 Gallons; 40 PSI Cut-out = 300 Gallons. Consult factory for more capacity rating if needed

Description	System Capacity	Part Number	Short Code	List Price
<b>UL LISTED - GAST AIR COMPRESSORS WITH CHECK VALVE AND PRESSURE SWITCH</b>				
1/6 HP, UL 115-60-1, 1LAA-46S-M100GX	90 Gallons	6999995064	16PAU	\$ 2,789.64
1/4 HP, UL 115-60-1, 2LAF-46S-M200EX	150 Gallons	6999995080	14PAU	\$ 3,102.50
1/3 HP, UL 115-60-1, 3LBA-46S-M300AX	180 Gallons	6999995134	13PAU	\$ 3,436.21
1/2 HP, UL 115-60-1, 4LCB-46S-M450GX	300 Gallons	6999995098	12PAU	\$ 3,936.79
3/4 HP, UL 115/208-230-60-1, 5LCA-46S-M550GX	400 Gallons	6999995066	34PAU	\$ 4,249.64
1 HP, UL 115/230-60-1, 6LCF-46S-M616NEX	600 Gallons	6999994852	1PAU	\$ 4,791.93
1.5 HP, UL 115/230-60-1, 7LDE-46S-M750X	800 Gallons	6999995067	112PAU	\$ 7,743.21
2 HP, UL 115/230-60-1, 8LDF-46S-M850X	1000 Gallons	6990008225	2PAU	\$10,558.93

\*Above models can be mounted to a riser using a Gast mounting bracket. Pressure switch is factory set with 40 PSI cut-in and 50 PSI cut-out pressure setting. Cut-in pressure cannot be adjusted below 30 PSI. On/Off differential of 10 PSI cannot be changed (example: if cut-in pressure is lowered to 30 PSI, then the cut-out pressure will be 40 PSI and cannot be changed) These compressors are rated for 50 PSI max pressure. Voltage and power example above: 115-60-1 = 115 volts 60Hz 1-phase power

Description	System Capacity	Part Number	Short Code	List Price
<b>NON UL-LISTED GAST AIR COMPRESSORS WITH CHECK VALVE AND PRESSURE SWITCH</b>				
1/6 HP, 115-60-1, 1LAA-32-M100X	90 Gallons			\$ Call
1/4 HP, 115-60-1, 2LAF-12-M200X	150 Gallons			\$ Call
1/3 HP, 115-60-1, 3LBA-32-M300X	180 Gallons			\$ Call
1/2 HP, 115-60-1, 4LCB-21-M450X	300 Gallons			\$ Call
3/4 HP, 115/230-60-1, 5LCA-22-M550X	400 Gallons			\$ Call
1 HP, 115/230-60-1, 6LCF-13-M616X	600 Gallons			\$ Call
1.5 HP, 115/230-60-1, 7LDE-16-M750X	800 Gallons			\$ Call
2 HP, 115/230-60-1, 8LDF-16-M850X	1000 Gallons			\$ Call

\*Above models can be mounted to a riser using a Gast mounting bracket. Pressure switch is factory set with 40 PSI cut-in and 50 PSI cut-out pressure setting. Cut-in pressure cannot be adjusted below 30 PSI. On/Off differential of 10 PSI cannot be changed (example: if cut-in pressure is lowered to 30 PSI, then the cut-out pressure will be 40 PSI and cannot be changed) These compressors are rated for 50 PSI max pressure. Voltage and power example above: 115-60-1 = 115 volts 60Hz 1-phase power

Items shown on this sheet may not be stocked at all Reliable warehouses. Please contact your local Reliable Warehouse for Availability. Refer to technical data sheets for specific listings, approvals and design parameters.

## AIR COMPRESSORS



Description	System Capacity	Part Number	Short Code	List Price
<b>NON UL-LISTED GAST AIR COMPRESSORS - TANK MOUNTED AND 100 PSI</b>				
1/6 HP, 115-60-1, 1HAB-11T-M100X, 2 GAL	80 Gallons	6999991027	16TA	\$ 3,780.36
3/4 HP, 115/230-60, 55HCD-11T-M550NGX, 20 GAL	340 Gallons			\$ Call
1.5 HP, 230-60-1, 7HDD-11TA-M750X, 30 GAL	660 Gallons	6990013330		\$ 17,655.15

\*Above models have stored air pressure at 100 PSI. Cut-in pressure of 80 PSI (70 PSI on the 1HAB only) Cut-out pressure of 100 PSI. Use with a Model A Pressure Maintenance Device for supervisory pressure settings. Compressor will cycle less and last longer than compressors with lower max pressure ratings. Voltage and power example above: 115-60-1 = 115 volts 60Hz 1-phase power (if no number shown after 60Hz it is 1-phase power)

Description	System Capacity	Part Number	Short Code	List Price
<b>NON UL-LISTED GAST AIR COMPRESSORS - TANK MOUNTED AND 50 PSI</b>				
1/4 HP, 115-60-1, 2LAF-11T-M200X 12 GAL	150 Gallons			\$ Call
1/2 HP, 115-60-1, 4LCB-11T-M450X 20 GAL	300 Gallons			\$ Call
3/4 HP, 115/230-60 5LCA-11T-M550X 20 GAL	400 Gallons			\$ Call
1 HP, 115/230-60-1, 6LCF-11T-M616X 30 GAL	600 Gallons			\$ Call
1.5 HP, 115/230-60, 7LDE-11T-M750X, 30 GAL	800 Gallons	6999991567	112TA	\$ 11,883.36
2 HP, 115/230-60-1, 8LDF-11TA-M850X, 30GAL	1000 Gallons			\$ Call

\*Above models have stored air pressure at 50 PSI. Cut-in pressure of 30 PSI and cut-out pressure of 50 PSI. Use with a Model A Pressure Maintenance Device for supervisory pressure settings if needed. Voltage and power example above: 115-60-1 = 115 volts 60Hz 1-phase power (if no number shown after 60Hz it is 1-phase power)

Description	System Capacity	Part Number	Short Code	List Price
<b>UL-LISTED GAST AIR COMPRESSORS - TANK MOUNTED AND 50 PSI</b>				
1/6HP, UL 115-60-1, 1LAA-46T-M100GX, 2GAL	90 Gallons	6999995091	16TAU	\$ 4,301.79
1/4HP, UL 115-60-1, 2LAF-46T-M200EX, 12GAL	150 Gallons	6999995111	14TAU	\$ 5,970.36
1/3HP, UL 115-60-1, 3LBA-46T-M300AX, 12GAL	180 Gallons	6999993433	13TAU	\$ 6,825.50
1/2HP, UL 115-60-1, 4LCB-46T-M450GX, 20GAL	300 Gallons	6999995114	12TAU	\$ 7,795.36
3/4HP, 115/230-60-1, 5LCA-46T-M550GX, 20GAL	400 Gallons	6999995110	34TAU	\$ 7,868.36
1HP, 115/230-60-1, 6LCF-46T-M616NEX, 30GAL	600 Gallons	6999995136	1TAU	\$ 8,108.21
1.5HP, 115/230-60-1, 7LDE-46T-M750X, 30GAL	800 Gallons	6999995056	112TAU	\$ 12,300.50
2 HP, 115/230-60-1, 8LDF-46T-M850X, 30GAL	1000 Gallons	6990011326	2TAU	\$ 16,398.93

\*Above models are UL Listed air tank compressors and have stored air pressure at 50 PSI. Cut-in pressure of 30 PSI and cut-out pressure of 50 PSI. Use with a Model A Pressure Maintenance Device for supervisory pressure settings if needed. Voltage and power example above: 115-60-1 = 115 volts 60Hz 1-phase power

Description	Part Number	Short Code	List Price
<b>GAST AIR COMPRESSOR - REPAIR KITS*</b>			
K1002 FLOOR MOUNT KIT (87R)	6990026509	K1022	\$ 110.33
K263 REPAIR KIT, 3/4HP	6888000020	K263	\$ 499.84
K303 REPAIR KIT 1-1/2HP	6888000030	K303	\$ 803.63
AT670 MOUNTING BRACKETS, 1/6-1 HP	6999990969	GMB	\$ 217.07
AT670A, MOUNTING BRACKET, 1.5-2 HP	6990007698	GMBL	\$ 466.68
SSP-87R6-01 SOUND SHIELD KIT	6990026510	SSP87R6	\$ 550.06

\*Repair Kit Contains: Gaskets, Piston, Seals, Piston Rings, In/Out Valve Plates, Manifold Seals and Felts (for Filters). SSP-87R6-01 Sound Shield kit provides a retrofit kit of part for Gast 87R-110S compressor shown above and reduces sound levels up to 20%

Items shown on this sheet may not be stocked at all Reliable warehouses. Please contact your local Reliable Warehouse for Availability. Refer to technical data sheets for specific listings, approvals and design parameters.



## AIR COMPRESSORS

Description	System Capacity	Part Number	Short Code	List Price
<b>HEAVY DUTY - SINGLE PHASE - TANK MOUNTED</b>				
S175-HD1-115 (115V, 1HP, 3 GALLON)	175 gallons	6990012386	C175	\$ 4,006.45
S265H-HD1-115 (115V, 1-1/2 HP, 3 GALLON)	265 gallons	6990012600	C265	\$ 4,080.40
S325H-HD1-115 (115V, 1-1/2 HP, 3 GALLON)	325 gallons	6990012601	C325	\$ 4,185.32
S500H-HD1-115 (115V, 1-1/2 HP, 30 GALLON)	500 gallons	6990012602	C500	\$ 6,397.19
S750H-HD1-230 (3HP,230V,30 GALLON H)	750 gallons	6990013997	C750	\$ 7,302.82
S900H-HD1-230 (5HP,230V,30 GALLON H)	900 gallons	6990013998	C900	\$ 7,468.33
S1300H-HD1-230S (5HP,230V,60 GALLON H)	1300 gallons	6990013999	C1300	\$ 12,619.56
S1700H-HD1-230S (7.5HP,230V,60 GALLON H)	1700 gallons	6990014000	C1700	\$ 13,344.82
<b>STANDARD DUTY - SINGLE PHASE - TANK MOUNTED</b>				
S300H-SD1-115 (1HP,115V,3 GALLON H)	300 gallons	6990013994	C300	\$ 3,405.48
<b>RISER MOUNTED</b>				
C-AIRE,#S280R-LD1-115P		7M99004812	C280R	\$ 2,896.17
C-AIRE,#S281R-LD1-115PD		7M99004813	C281R	\$ 4,266.37

Items shown on this sheet may not be stocked at all Reliable warehouses. Please contact your local Reliable Warehouse for Availability. Refer to technical data sheets for specific listings, approvals and design parameters.

**VALVE ACCESSORIES**

- Additional Sprinkler and Valve Signs available upon request

Description	Part Number	Short Code	List Price
<b>PRESSURE GAUGES</b>			
GAUGE,WATER,0-300,1/4	98248001	WATER	\$ 124.70
GAUGE,AIR,0-80,1/4NPT	98248000	AIR	\$ 133.33
GAUGE,AIR,58 OZ,1/4NPT	98248002	AIRO	\$ 472.26
<b>INSPECTORS TEST CONNECTIONS</b>			
Sight Test Type (Model B)	6851010000	ISC	\$ 515.02
Blind Test Type (Model A)	6851020000	IBC	\$ 171.68
<b>AUTOMATIC BALL DRIPS</b>			
1/2,BALL DRIP VALVE,AUTO	78653500	5ABD	\$ 295.96
3/4,BALL DRIP VALVE,AUTO,MOD C	78653700	75ABD	\$ 338.17
<b>MECHANICAL BALL DRIPS</b>			
BALL DRIP VALVE 1/2" MECHANICAL MOD. C	78653100	5MBD	\$ 528.32
1/2,BALL DRIP VALVE,MECH,MOD D	78653800		\$ 338.17
<b>STRAINER</b>			
3/4" NPT (Female)	78650200	34ST	\$ 310.50
<b>MISCELLANEOUS</b>			
Model C Sight Drain 2" NPT (Female)	6863000000	2ISC	\$ 558.65
Model B Drum Drip Only 3/4" NPT (Female)	71010448		\$ 339.33
Model A Fill Cup 1/2" NPT (Female)	75000050	5FC	\$ 160.15
Model A Fill Cup 3/4" NPT (Female)	75000075	75FC	\$ 181.20
Model A Control Valve Seal Only	6869800000		\$ 44.26
<b>SIGNS—MODEL A</b>			
Valve Control Sign	6892011000	VCS	\$ 18.55
<b>SIGNS—MODEL B</b>			
Inspector Test Sign	6892110000	ITS	\$ 4.28
Open Sprinkler Control Sign	6892030000	OSCS	\$ 4.28
Open Sprinkler Drain Sign	6892040000	OSDS	\$ 4.28
Test Valve Sign	6892050000	TVS	\$ 4.28
Water Motor Line Sign	6892060000	WMLS	\$ 4.28
Auxiliary Drain Sign	6892070000	ADS	\$ 4.28
Main Drain Sign	6892080000	MDS	\$ 4.28
Drain Sign	6892090000	DS	\$ 4.28
Alarm Test Sign	6892100000	ATS	\$ 4.28
<b>SIGNS—MODEL C</b>			
Cold Weather Sign	6892010000	CWS	\$ 12.00
<b>SIGNS—MODEL D</b>			
Fire Alarm Sign	6892020000	FAS	\$ 18.55
<b>SIGNS—MODEL E</b>			
Hydraulically Calculated System	6892120000	HCS	\$ 12.42

**Notes:**

\*PERSONALIZED PRESSURE GAUGES ARE AVAILABLE UPON REQUEST. PLEASE CONTACT OUR CUSTOMER SERVICE DEPARTMENT FOR MORE INFORMATION.



## RESIDENTIAL RISERS

- GROOVED END
- See Bulletin 425
- WITH POTTER SWITCHES

## RESIDENTIAL RISERS

- THREADED MALE NPT 1" (25)
- See Bulletin 425
- WITH POTTER SWITCHES

Description	Size	Part Number	Short Code	List Price
<b>RESIDENTIAL RISER WITH THREAD FEMALE NPT 1" (25) - POTTER</b>				
1" RES RISER ASSEMBLY,POTTER		6A000RP000	1RRNP	\$1,581.81
1 1/2" RES RISER ASSEMBLY,POTTER		6A030RP000	15RRNP	\$1,581.81
2" RES RISER ASSEMBLY,POTTER		6A060RP000	2RRNP	\$1,737.46
<b>RESIDENTIAL RISER WITH THREADED MALE NPT 1"(25)- POTTER</b>				
1" Res Riser Assembly MNPT		6A020RP000		\$1,603.80
<b>RESIDENTIAL RISER WITH PRESSURE RELIEF VALVE MALE NPT 1" (25)-POTTER</b>				
1" RES RISER ASSBLY MNPT W/PRV 175 PTR R		6A020RP001		\$2,309.47
1" RES RISER ASSBLY MNPT W/PRV 185 PTR R		6A020RP002		\$2,309.47
<b>RESIDENTIAL RISER WITH TEST &amp; DRAIN MALE NPT 1" (25) POTTER</b>				
1" RES RISER MNPT W/2.8 TD PTR R MTO		6A020RP010		\$2,437.78
1" RES RISER MNPT W/4.2 TD PTR R		6A020RP020		\$2,437.78
1" RES RISER MNPT W/5.6 TD PTR R		6A020RP030		\$2,437.78
<b>RESIDENTIAL RISER WITH TEST &amp; DRAIN, PRV 175&amp; 185 PSI MALE NPT 1" POTTER</b>				
1" RES RISER MNPT W/2.8 TD PRV 175 PTR R		6A020RP011		\$2,694.38
1" RES RISER MNPT W/2.8 TD PRV 185 PTR R		6A020RP012		\$2,694.38
1" RES RISER MNPT W/4.2 TD PRV 175 PTR R		6A020RP021		\$2,694.38
1" RES RISER MNPT W/4.2 TD PRV 185 PTR R		6A020RP022		\$2,694.38
1" RES RISER MNPT W/5.6 TD PRV 175 PTR R		6A020RP031		\$2,694.38
1" RES RISER MNPT W/5.6 TD PRV 185 PTR R		6A020RP032		\$2,694.38
<b>RESIDENTIAL RISER GROOVED END POTTER</b>				
1 1/2" RES RISER ASSEMBLY GE PTR N		6A050RP000		\$1,603.80
<b>RESIDENTIAL RISER GROOVED END WITH PRESSURE RELIEF VALVE POTTER</b>				
1 1/2" RES RISER GE PRV 175 PTR R		6A050RP001		\$2,309.47
1 1/2" RES RISER GE PRV 185 PTR R		6A050RP002		\$2,309.47
<b>RESIDENTIAL RISER GROOVED END WITH TEST&amp; DRAIN POTTER</b>				
1 1/2" RES RISER ASSY GE W/2.8K TD PTR R		6A050RP010		\$2,437.78
1 1/2" RES RISER ASSY GE W/4.2K TD PTR R		6A050RP020		\$2,437.78
1 1/2" RES RISER GE W/5.6K TD PTR		6A050RP030		\$2,437.78
<b>RESIDENTIAL RISER GE WITH TEST &amp; DRAIN,PRV 175&amp; 185 PSI POTTER</b>				
1 1/2" RES RISER GE W/2.8K TD PRV175 P R		6A050RP011		\$2,694.38
1 1/2" RES RISER GE W/2.8K TD PRV185 P R		6A050RP012		\$2,694.38
1 1/2" RESRISER GE W/4.2 TD PRV175 PTR R		6A050RP021		\$2,694.38
1 1/2" RESRISER GE W/4.2 TD PRV185 PTR R		6A050RP022		\$2,694.38
1 1/2" RESRISER GE W/5.6 TD PRV175 PTR R		6A050RP031		\$2,694.38
1 1/2" RESRISER GE W/5.6 TD PRV185 PTR R		6A050RP032		\$2,694.38

## Model CR Commercial Riser For Commercial Applications

- For Commercial Applications
- See Bulletin 621
- **With Potter Switch**



## Model CR Commercial Riser with Test & Drain

- For Commercial Applications
- See Bulletin 621
- **With Potter Switch**

Description	Size	Part Number	Short Code	List Price
<b>MODEL CR COMMERCIAL RISER WITH BASIC TRIM-POTTER SWITCH</b>				
Model CR Commercial Riser - Threaded	1-1/2" (40mm)	6A080CP000	15CRBPE	\$1,698.15
Model CR Commercial Riser - Threaded	2" (50mm)	6A090CP000	2CRBPE	\$1,954.76
Model CR Commercial Riser - Grooved	2" (50mm)	6A100CP000	2CRGBPE	\$1,698.15
Model CR Commercial Riser - Grooved	2-1/2" (65mm)	6A120CP010	25CRGBPE	\$1,864.78
Model CR Commercial Riser - Grooved	3" (80mm)	6A140CP010	3CRGBPE	\$1,940.41
Model CR Commercial Riser - Grooved	4" (100mm)	6A160CP020	4CRGBPE	\$2,304.13
Model CR Commercial Riser - Grooved	6" (150mm)	6A180CP020	6CRGBPE	\$2,516.22
Model CR Commercial Riser - Grooved	8" (200mm)	6A190CP020	8CRGBPE	\$2,758.58
<b>MODEL CR COMMERCIAL RISER WITH TEST &amp; DRAIN 2.8K-POTTER SWITCH</b>				
Model CR Commercial Riser w- Test&Drain - Threaded	1-1/2" (40mm)	6A080CP030	15CR28PE	\$1,943.81
Model CR Commercial Riser w- Test&Drain - Threaded	2" (50mm)	6A090CP030	2CR28PE	\$1,943.81
Model CR Commercial Riser w- Test&Drain - Grooved	2" (50mm)	6A100CP030	2CRG28PE	\$1,875.81
<b>MODEL CR COMMERCIAL RISER WITH TEST &amp; DRAIN 4.2K-POTTER SWITCH</b>				
Model CR Commercial Riser w- Test&Drain - Threaded	1-1/2" (40mm)	6A080CP040	15CR42PE	\$1,943.81
Model CR Commercial Riser w- Test&Drain - Threaded	2" (50mm)	6A090CP040	2CR42PE	\$1,943.81
Model CR Commercial Riser w- Test&Drain - Grooved	2" (50mm)	6A100CP040	2CRG42PE	\$1,875.81
Model CR Commercial Riser w- Test&Drain - Grooved	2-1/2" (65mm)	6A120CP060	25CRG42PE	\$2,147.81
Model CR Commercial Riser w- Test&Drain - Grooved	3" (80mm)	6A140CP060	3CRG42PE	\$2,147.81
Model CR Commercial Riser w- Test&Drain - Grooved	4" (100mm)	6A170CP270	4CRG28PE	\$2,691.82
<b>MODEL CR COMMERCIAL RISER WITH TEST &amp; DRAIN 5.6K-POTTER SWITCH</b>				
Model CR Commercial Riser w- Test&Drain - Threaded	1-1/2" (40mm)	6A080CP050	15CR56PE	\$1,943.81
Model CR Commercial Riser w- Test&Drain - Threaded	2" (50mm)	6A090CP050	2CR56PE	\$1,943.81
Model CR Commercial Riser w- Test&Drain - Grooved	2" (50mm)	6A100CP050	2CRG56PE	\$1,875.81
Model CR Commercial Riser w- Test&Drain - Grooved	2-1/2" (65mm)	6A120CP070	25CRG56PE	\$2,147.81
Model CR Commercial Riser w- Test&Drain - Grooved	3" (80mm)	6A140CP070	3CRG56PE	\$2,147.81
Model CR Commercial Riser w- Test&Drain - Grooved	4" (100mm)	6A160CP100	4CRG56PE	\$2,691.82
Model CR Commercial Riser w- Test&Drain - Grooved	6" (150mm)	6A180CP100	6CRG56PE	\$2,759.82
Model CR Commercial Riser w- Test&Drain - Grooved	8" (200mm)	6A190CP100	8CRG56PE	\$3,371.83
<b>MODEL CR COMMERCIAL RISER WITH TEST &amp; DRAIN 8.0K-POTTER SWITCH</b>				
Model CR Commercial Riser w- Test&Drain - Grooved	2-1/2" (65mm)	6A120CP080	25CRG80PE	\$2,147.81
Model CR Commercial Riser w- Test&Drain - Grooved	3" (80mm)	6A140CP080	3CRG80PE	\$2,147.81
Model CR Commercial Riser w- Test&Drain - Grooved	4" (100mm)	6A160CP110	4CRG80PE	\$2,691.82
Model CR Commercial Riser w- Test&Drain - Grooved	6" (150mm)	6A180CP110	6CRG80PE	\$2,759.82
Model CR Commercial Riser w- Test&Drain - Grooved	8" (200mm)	6A190CP110	8CRG80PE	\$3,371.83
<b>MODEL CR COMMERCIAL RISER WITH TEST &amp; DRAIN 11.2K-POTTER SWITCH</b>				
Model CR Commercial Riser w- Test&Drain - Grooved	2-1/2" (65mm)	6A120CP090	25CRG112PE	\$2,147.81
Model CR Commercial Riser w- Test&Drain - Grooved	3" (80mm)	6A140CP090	3CRG112PE	\$2,147.81
Model CR Commercial Riser w- Test&Drain - Grooved	4" (100mm)	6A160CP120	4CRG112PE	\$2,691.82
Model CR Commercial Riser w- Test&Drain - Grooved	6" (150mm)	6A180CP120	6CRG112PE	\$2,759.82
Model CR Commercial Riser w- Test&Drain - Grooved	8" (200mm)	6A190CP120	8CRG112PE	\$3,371.83
<b>MODEL CR COMMERCIAL RISER WITH TEST &amp; DRAIN 16.8K-POTTER SWITCH</b>				
Model CR Commercial Riser w- Test&Drain - Grooved	4" (100mm)	6A160CP130	4CRG168PE	\$2,691.82
Model CR Commercial Riser w- Test&Drain - Grooved	6" (150mm)	6A180CP130	6CRG168PE	\$2,759.82
Model CR Commercial Riser w- Test&Drain - Grooved	8" (200mm)	6A190CP130	8CRG168PE	\$3,371.83
<b>PRESSURE RELIEF KITS</b>				
Pressure Relief Trim - 175 PSI	All Sizes	6501203550	PRT175	\$ 250.53
Pressure Relief Trim - 185 PSI	All Sizes	6501203545	PRT185	\$ 250.53
Pressure Relief Trim - 210 PSI	All Sizes	6501213550	PRT210	\$ 250.53
Pressure Relief Trim - 260 PSI	All Sizes	6501203546	PRT260	\$ 375.80
Pressure Relief Trim - 310 PSI	All Sizes	6501203547	PRT310	\$ 375.80

## Model CR Commercial Riser & PRV

- For Commercial Applications
- See Bulletin 621
- **With Potter Switch**



## Model CR Commercial Riser with Test & Drain & PRV

- For Commercial Applications
- See Bulletin 621
- Items listed are with the 175 Pressure Relief Valve
- **With Potter Switch**

Description	Size	Part Number	Short Code	List Price
<b>MODEL CR COMMERCIAL RISER WITH BASIC TRIM &amp; PRV 175 PSI</b>				
Model CR Commercial Riser - Threaded	1-1/2" (40mm)	6A080CP001	15CRBPP	\$2,106.16
Model CR Commercial Riser - Threaded	2" (50mm)	6A090CP001	2CRBPP	\$2,118.99
Model CR Commercial Riser - Grooved	2" (50mm)	6A100CP001	2CRGBPP	\$2,106.16
Model CR Commercial Riser - Grooved	2-1/2" (65mm)	6A120CP011	25CRGBPP	\$2,348.41
Model CR Commercial Riser - Grooved	3" (80mm)	6A140CP011	3CRGBPP	\$2,348.41
Model CR Commercial Riser - Grooved	4" (100mm)	6A160CP021	4CRGBPP	\$2,712.14
Model CR Commercial Riser - Grooved	6" (150mm)	6A180CP021	6CRGBPP	\$2,924.23
Model CR Commercial Riser - Grooved	8" (200mm)	6A190CP021	8CRGBPP	\$3,166.59
<b>MODEL CR COMMERCIAL RISER WITH TEST &amp; DRAIN &amp; PRV K2.8 175 PSI</b>				
Model CR Commercial Riser w- Test&Drain - Threaded	1-1/2" (40mm)	6A080CP031	15CR28PP	\$2,351.81
Model CR Commercial Riser w- Test&Drain - Threaded	2" (50mm)	6A090CP031	2CR28PP	\$2,351.81
Model CR Commercial Riser w- Test&Drain - Grooved	2" (50mm)	6A100CP031	2CRG28PP	\$2,283.81
<b>MODEL CR COMMERCIAL RISER WITH TEST &amp; DRAIN &amp; PRV K4.2 175 PSI</b>				
Model CR Commercial Riser w- Test&Drain - Threaded	1-1/2" (40mm)	6A080CP041	15CR42PP	\$2,351.81
Model CR Commercial Riser w- Test&Drain - Threaded	2" (50mm)	6A090CP041	2CR42PP	\$2,351.81
Model CR Commercial Riser w- Test&Drain - Grooved	2" (50mm)	6A100CP041	2CRG42PP	\$2,283.81
Model CR Commercial Riser w- Test&Drain - Grooved	2-1/2" (65mm)	6A120CP061	25CRG42PP	\$2,555.82
Model CR Commercial Riser w- Test&Drain - Grooved	3" (80mm)	6A140CP061	3CRG42PP	\$2,555.82
<b>MODEL CR COMMERCIAL RISER WITH TEST &amp; DRAIN &amp; PRV K5.6 175 PSI</b>				
Model CR Commercial Riser w- Test&Drain - Threaded	1-1/2" (40mm)	6A080CP051	15CR56PP	\$2,351.81
Model CR Commercial Riser w- Test&Drain - Threaded	2" (50mm)	6A090CP051	2CR56PP	\$2,351.81
Model CR Commercial Riser w- Test&Drain - Grooved	2" (50mm)	6A100CP051	2CRG56PP	\$2,283.81
Model CR Commercial Riser w- Test&Drain - Grooved	2-1/2" (65mm)	6A120CP071	25CRG56PP	\$2,555.82
Model CR Commercial Riser w- Test&Drain - Grooved	3" (80mm)	6A140CP071	3CRG56PP	\$2,555.82
Model CR Commercial Riser w- Test&Drain - Grooved	4" (100mm)	6A160CP101	4CRG56PP	\$3,343.60
Model CR Commercial Riser w- Test&Drain - Grooved	6" (150mm)	6A180CP101	6CRG56PP	\$3,487.31
Model CR Commercial Riser w- Test&Drain - Grooved	8" (200mm)	6A190CP101	8CRG56PP	\$3,779.83
<b>MODEL CR COMMERCIAL RISER WITH TEST &amp; DRAIN &amp; PRV K8.0 175 PSI</b>				
Model CR Commercial Riser w- Test&Drain - Grooved	2-1/2" (65mm)	6A120CP081		\$2,555.82
Model CR Commercial Riser w- Test&Drain - Grooved	3" (80mm)	6A140CP081		\$2,555.82
Model CR Commercial Riser w- Test&Drain - Grooved	4" (100mm)	6A160CP111		\$3,343.60
Model CR Commercial Riser w- Test&Drain - Grooved	6" (150mm)	6A180CP111		\$3,487.31
Model CR Commercial Riser w- Test&Drain - Grooved	8" (200mm)	6A190CP111		\$3,779.83
<b>MODEL CR COMMERCIAL RISER WITH TEST &amp; DRAIN &amp; PRV K11.2 175 PSI</b>				
Model CR Commercial Riser w- Test&Drain - Grooved	2-1/2" (65mm)	6A120CP091		\$2,555.82
Model CR Commercial Riser w- Test&Drain - Grooved	3" (80mm)	6A140CP091		\$2,555.82
Model CR Commercial Riser w- Test&Drain - Grooved	4" (100mm)	6A160CP121		\$3,343.60
Model CR Commercial Riser w- Test&Drain - Grooved	6" (150mm)	6A180CP121		\$3,487.31
Model CR Commercial Riser w- Test&Drain - Grooved	8" (200mm)	6A190CP121		\$3,779.83
<b>MODEL CR COMMERCIAL RISER WITH TEST &amp; DRAIN &amp; PRV K16.8 175 PSI</b>				
Model CR Commercial Riser w- Test&Drain - Grooved	4" (100mm)	6A160CP131		\$3,343.60
Model CR Commercial Riser w- Test&Drain - Grooved	6" (150mm)	6A180CP131		\$3,487.31
Model CR Commercial Riser w- Test&Drain - Grooved	8" (200mm)	6A190CP131		\$3,779.83
<b>PRESSURE RELIEF KITS</b>				
Pressure Relief Trim - 175 PSI	All Sizes	6501203550	PRT175	\$ 250.53
Pressure Relief Trim - 185 PSI	All Sizes	6501203545	PRT185	\$ 250.53
Pressure Relief Trim - 210 PSI	All Sizes	6501213550	PRT210	\$ 250.53
Pressure Relief Trim - 260 PSI	All Sizes	6501203546	PRT260	\$ 375.80
Pressure Relief Trim - 310 PSI	All Sizes	6501203547	PRT310	\$ 375.80





### Model FCA Floor Control Assembly with Test and Drain

- Potter Switch
- See Bulletin 619
- Grooved Component Connections for Universal Application



### HV Hose Valves

- See Bulletin 444

Description	Size	Part Number	Short Code	List Price
<b>MODEL FCA FLOOR CONTROL ASSEMBLY TEST AND DRAIN K2.8 - POTTER SWITCH</b>				
Model FC Floor Control w- Test&Drain - Grooved	2" (50mm)	6B2000P011	2FC28P	\$3,849.12
<b>MODEL FCA FLOOR CONTROL ASSEMBLY WITH TEST &amp; DRAIN K4.2 - POTTER SWITCH</b>				
Model FC Floor Control w- Test&Drain - Grooved	2" (50mm)	6B2000P021	2FC42P	\$3,849.12
Model FC Floor Control w- Test&Drain - Grooved	2 1/2" (66MM)	6B2500P041	25FC42P	\$3,720.82
Model FC Floor Control w- Test&Drain - Grooved	3" (80mm)	6B3000P041	3FC42P	\$4,362.34
<b>MODEL FCA FLOOR CONTROL ASSEMBLY WITH TEST AND DRAIN K5.6 - POTTER SWITCH</b>				
Model FC Floor Control w- Test&Drain - Grooved	2" (50mm)	6B2000P031	2FC56P	\$3,849.12
Model FC Floor Control w- Test&Drain - Grooved	2 1/2"	6B2500P051	25FC56P	\$3,720.82
Model FC Floor Control w- Test&Drain - Grooved	3"	6B3000P051	3FC56P	\$4,362.34
Model FC Floor Control w- Test&Drain - Grooved	4"	6B4000P081	4FC56P	\$4,362.34
<b>MODEL FCA FLOOR CONTROL ASSEMBLY WITH TEST AND DRAIN K8.0 - POTTER SWITCH</b>				
Model FC Floor Control w- Test&Drain - Grooved	2-1/2" (65mm)	6B2500P061	25FC80P	\$3,720.82
Model FC Floor Control w- Test&Drain - Grooved	3" (80mm)	6B3000P061	3FC80P	\$4,362.34
Model FC Floor Control w- Test&Drain - Grooved	4" (100mm)	6B4000P091	4FC80P	\$4,362.34
<b>MODEL FCA FLOOR CONTROL ASSEMBLY WITH TEST AND DRAIN K11.2 - POTTER SWITCH</b>				
Model FC Floor Control w- Test&Drain - Grooved	2-1/2" (65mm)	6B2500P071	25FC112P	\$3,720.82
Model FC Floor Control w- Test&Drain - Grooved	3" (80mm)	6B3000P071	3FC112P	\$4,362.34
Model FC Floor Control w- Test&Drain - Grooved	4" (100mm)	6B4000P101	4FC112P	\$4,362.34
<b>MODEL FCA FLOOR CONTROL ASSEMBLY WITH TEST AND DRAIN K16.8 - POTTER SWITCH</b>				
Model FC Floor Control w- Test&Drain - Grooved	4" (100mm)	6B4000P111	4FC168P	\$4,362.34
<b>STREAMLINE DRAIN HOSES</b>				
RASCOFLEX,#RFDH12524TU,1.25"X2',MNPTXUN		7M99004448		\$ 301.32
RASCOFLEX,#RFDH12548TU,1.25"X4',MNPTXUN		7M99004449		\$ 380.00
RASCOFLEX,#RFDH248TG,2"X48",MNPTXGRV		7M99004450		\$ 431.88
RASCOFLEX,#RFDH124TU,1"X2',MNPTXUNION		7M99004675		\$ 276.79
RASCOFLEX,#RFDH12536TU,1.25"X3',MNPTXUN		7M99004676		\$ 357.67
<b>MODEL HV HOSE VALVES</b>				
RASCO,#REL-HVT,1.5",FXM,HOSE VALVE	1 1/2"	7M99004574	15RAHV	\$ 512.39
RASCO,#REL-HVT,2.5",FXM,HOSE VALVE	2 1/2"	7M99004576	25RAHV	\$ 818.83
RASCO,#REL-HVG,2.5",GXM,HOSE VALVE	2 1/2"	7M99004578	25RAHVG	\$ 877.19
<b>MODEL HV HOSE VALVES ACCESSORIES</b>				
RASCO,#REL-CC15,1.5",CAP+CHAIN,BRASS	1 1/2"	7M99004621	15RHVC	\$ 97.69
RASCO,#REL-CC25,2.5",CAP+CHAIN,BRASS	2 1/2"	7M99004620	25RHVC	\$ 122.83

**Notes:**

175 PSI Relief Valve Kit is provided and installed as standard equipment. Higher pressure relief valves (185, 210, 260 & 300 PSI) are available upon request.

**Notes:**

For 260 PSI and 310 PSI trim kits add \$100 to the list price