



Model B-1 Accelerator

VALVES ACCESSORIES

- See Bulletins 250, 251, 320 & 322



NITROGEN MAINTENANCE DEVICES

- NS-PaK and NS-ASAM
- See Bulletin 254

ACD Dry System Auxiliary Condensate Drain w-Sight Glass

- See Bulletin 441

Description	Part Number	Short Code	List Price
MODEL B1 ACCELERATOR			
B1 Accelerator	6301000300	AE	C\$3,542.62
B2 Accelerator Trim	6516000002	ACT	C\$1,456.74
Replacement Parts Kit - B1	6888000100	B1RPK	C\$1,203.54
DRY VALVE TRIM ACCESSORIES			
Fill Line- Model A (2-1/2")			C\$ Call
Fill Line- Model D (4 & 6")			C\$ Call
Priming Chamber	6501080100	PCG	C\$ 804.88
AIR MAINTENANCE DEVICE			
A Owner's Air (factory set 10psi)	6304001110	AMDA10	C\$2,223.83
A Owner's Air (factory set 23psi)	6304001123	AMDA23	C\$2,223.83
B Air Compressor Control Assembly	6304012100	AMDB	C\$2,526.14
PRESSURE ALARM SWITCHES			
EPS10-1 Alarm, Single SPDT (System Sensor)- Set 4-8PSI	6999991339	EPS10-1	C\$ 440.26
EPS10-2 Alarm, Double SPDT (System Sensor)- Set 4-8PSI	6999991212	EPS10-2	C\$ 500.00
EPS40-1 Supervisory, Single SPDT- Adj 10-100PSI	6999991213	EPS40-1	C\$ 440.26
EPS40-2 High/Low Supervisory Double SPDT- Adj 10-100PSI	6999991340	EPS40-2	C\$ 500.00
VALVE SEAT WRENCHES			
2-1/2" & 4" Model D Dry Pipe Valve	6881340000	W4DPV	C\$ 344.45
6" Model D Dry Pipe Valve	6881360000	W6DPV	C\$ 374.42

Description	Part Number	Short Code	List Price
NS-PAK			
NS-PaK Nitrogen Regulator System	6704030021	NSPAK	C\$13,909.30
NS-ASAM			
Nitrogen Maintenance Device with Pressure Switch	6704030022	NSASAM	C\$ 9,272.87
NITROGEN REGULATING DEVICE			
Nitrogen Regulating Device w/ Switch	6304030101		C\$ 2,781.19
Nitrogen Regulating Device w/o Switch	6304030100		C\$ 2,118.02

Description	Part Number	Short Code	List Price
DRY SYSTEM AUXILIARY CONDENSATE DRAIN			
ACD Dry System Auxiliary Condensate Drain w- Sight Glass	6501190000	ACD	C\$1,218.51

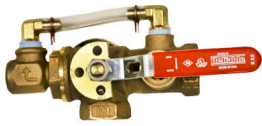


MODEL C ELECTRIC ACCELERATOR

- See Bulletin 325

Description	Part Number	Short Code	List Price
ELECTRONIC ACCELERATORS			
Electronic Accelerator	6301000400	AEC	C\$ 10,999.99
Electronic Accelerator Trim Kit FX	650120001B		C\$ 2,857.14
Electronic Accelerator Trim Kit DDX	650120001C		C\$ 1,857.14
BATTERY,12V/5AH,SLA,F1 TERMINAL	6611112200		C\$ 194.65

Description	Part Number	Short Code	List Price
STRUT CLAMPS			
PHD,#2007,2",STRUT CLAMP	7M99002013	SC2PHD	C\$ 18.88
PHD,#2008,2.5",STRUT CLAMP	7M99002014	SC25PHD	C\$ 21.34
PHD,#2009,3",STRUT CLAMP	6990011077	SC3PHD	C\$ 23.06
PHD,#2011,4",STRUT CLAMP	6990011078	SC4PHD	C\$ 30.27
PHD,#2013,6",STRUT CLAMP	7M99002015	SC6PHD	C\$ 59.40
PHD,#2014,8",STRUT CLAMP	7M99002016	SC8PHD	C\$ 124.44



TD TEST AND DRAIN

- See Bulletin 618
- Optional Pressure Relief Kit



PRESSURE RELIEF TRIM KITS

- See Bulletin 618



A PRESSURE RELIEF VALVE

- See Bulletin 257



AAV AUTOMATIC AIR VENT

- **Stainless Steel Construction**
- **175 psi and 300 psi option**
- See Bulletin 620

Description	K-Factor	Part Number	Short Code	List Price
MODEL TD TEST AND DRAIN - THREADED				
RASCO T&D,1",THRD,2.8K,300PSI,UL/FM	K2.8 (40)	7M99003865	RTD128	C\$ 696.95
RASCO T&D,1",THRD,4.2K,300PSI,UL/FM	K4.2 (60)	7M99003866	RTD142	C\$ 696.95
RASCO T&D,1",THRD,5.6K,300PSI,UL/FM	K5.6 (80)	7M99003867	RTD156	C\$ 696.95
RASCO T&D,1.25",THRD,2.8K,300PSI,UL/FM	K2.8 (40)	7M99004558	RTD12528	C\$ 925.93
RASCO T&D,1.25",THRD,4.2K,300PSI,UL/FM	K4.2 (60)	7M99003868	RTD12542	C\$ 925.93
RASCO T&D,1.25",THRD,5.6K,300PSI,UL/FM	K5.6 (80)	7M99003869	RTD12556	C\$ 925.93
RASCO T&D,1.25",THRD,8.0K,300PSI,UL/FM	K8.0 (115)	7M99003870	RTD12580	C\$ 925.93
RASCO T&D,1.25",THRD,11.2K,300PSI,UL/FM	K11.2 (160)	7M99003871	RTD125112	C\$ 925.93
RASCO T&D,2",THRD,2.8K,300PSI,UL/FM	K2.8 (40)	7M99004560	RTD228	C\$1,571.01
RASCO T&D,2",THRD,4.2K,300PSI,UL/FM	K4.2 (60)	7M99004510	RTD242	C\$1,571.01
RASCO T&D,2",THRD,5.6K,300PSI,UL/FM	K5.6 (80)	7M99003872	RTD256	C\$1,571.01
RASCO T&D,2",THRD,8.0K,300PSI,UL/FM	K8 (115)	7M99003873	RTD280	C\$1,571.01
RASCO T&D,2",THRD,11.2K,300PSI,UL/FM	K11.2 (160)	7M99003874	RTD2112	C\$1,571.01
RASCO T&D,2",THRD,16.8K,300PSI,UL/FM	K16.8 (240)	7M99003875	RTD2168	C\$1,571.01
MODEL TD TEST AND DRAIN - GROOVED X THREADED				
RASCO T&D,1.25",GXT,2.8K,300PSI,UL/FM	K2.8 (40)	7M99004559	RTD12528GT	C\$ 976.19
RASCO T&D,1.25",GXT,4.2K,300PSI,UL/FM	K4.2 (60)	7M99004106	RTD12542GT	C\$ 976.19
RASCO T&D,1.25",GXT,5.6K,300PSI,UL/FM	K5.6 (80)	7M99004107	RTD12556GT	C\$ 976.19
RASCO T&D,1.25",GXT,8.0K,300PSI,UL/FM	K8.0 (115)	7M99004108	RTD12580GT	C\$ 976.19
RASCO T&D,1.25",GXT,11.2K,300PSI,UL/FM	K11.2 (160)	7M99004109	RTD125112GT	C\$ 976.19
RASCO T&D,2",GXT,2.8K,300PSI,UL/FM	K2.8 (40)	7M99004561	RTD228GT	C\$ 1,711.96
RASCO T&D,2",GXT,4.2K,300PSI,UL/FM	K4.2 (60)	7M99004540	RTD242GT	C\$ 1,711.96
RASCO T&D,2",GXT,5.6K,300PSI,UL/FM	K5.6 (80)	7M99004110	RTD256GT	C\$ 1,711.96
RASCO T&D,2",GXT,8.0K,300PSI,UL/FM	K8.0 (115)	7M99004111	RTD280GT	C\$ 1,711.96
RASCO T&D,2",GXT,11.2K,300PSI,UL/FM	K11.2 (160)	7M99004112	RTD2112GT	C\$ 1,711.96
RASCO T&D,2",GXT,16.8K,300PSI,UL/FM	K16.8 (240)	7M99004113	RTD2168GT	C\$ 1,711.96

Description	Part Number	Short Code	List Price
MODEL A PRESSURE RELIEF VALVE - NPT			
MOD A 175 PSI PRESSURE RELIEF VLV 1/2NPT	6501000001	PRV175	C\$ 138.96
A Pressure Relief Valve, 185 psi, 1/2 NPT	6501000002	PRV185	C\$ 138.96
A Pressure Relief Valve, 210 psi, 1/2 NPT	6501000003	PRV210	C\$ 208.44
A Pressure Relief Valve, 260 psi, 1/2 NPT	6501000004	PRV260	C\$ 208.44
A Pressure Relief Valve, 310 psi, 1/2 NPT	6501000005	PRV310	C\$ 208.44
MODEL A PRESSURE RELIEF VALVE - BSPT			
MOD A 175PSI PRESSURE RELIEF VLV 1/2BSPT	6501000006		C\$ 138.96
MOD A PRESSURE RELIEF VLV 185PSI 1/2BSPT	6501000007		C\$ 138.96
MOD A 210PSI PRESSURE RELIEF VLV 1/2BSPT	6501000008		C\$ 208.44
MOD A 260PSI PRESSURE RELIEF VLV 1/2BSPT	6501000009		C\$ 208.44
MOD A 310PSI PRESSURE RELIEF VLV 1/2BSPT	6501000010		C\$ 208.44
MODEL AAV AUTOMATIC AIR VENT			
AAV-S,AUTOMATIC AIR VENT, 175 PSI	6301600000	AAV175	C\$3,027.09
AAV-S,AUTOMATIC AIR VENT, 300 PSI	6301600001	AAV300	C\$6,390.51

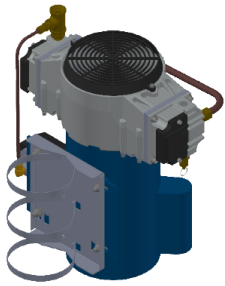
Description	Part Number	Short Code	List Price
PRESSURE RELIEF TRIM KITS			
Pressure Relief Kit - 175 psi	6501203550	PRT175	C\$ 325.36
Pressure Relief Kit - 185 psi	6501203545	PRT185	C\$ 325.36
Pressure Relief Kit - 210 psi	6501213550	PRT210	C\$ 325.36
Pressure Relief Kit - 260 psi	6501203546	PRT260	C\$ 488.05
Pressure Relief Kit - 310 psi	6501203547	PRT310	C\$ 488.05



QRM RISER & TANK MOUNTED AIR COMPRESSORS

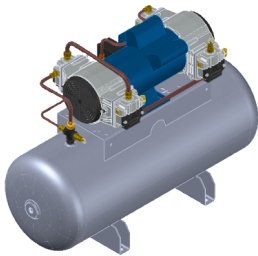
- See Bulletin 256

Description	Part Number	Short Code	List Price
QRM2 AIR COMPRESSORS - TANKLESS w/CHECK VALVE & PRESSURE SWITCH: LOW PRESSURE			
RASCO AIR,QRM2-25115 1/4HP,115,TANKLESS	687200001		C\$ 4,519.48
RASCO AIR,QRM2-25220 1/4HP,220,TANKLESS	687200002		C\$ 4,465.67
RASCO AIR,QRM2-50115 1/2HP,115,TANKLESS	687200005		C\$ 5,595.54
RASCO AIR,QRM2-50220 1/2HP,220,TANKLESS	687200006		C\$ 5,837.66
RASCO AIR,QRM2-25220-50HZ,1/4,220,TNKLSS	687200011		C\$ 4,465.67
RASCOAIR,QRM2-50220-50HZ,1/2,220,TNKLSS	687200013		C\$ 5,837.66
QRM2 AIR COMPRESSORS - TANKLESS w/CHECK VALVE & PRESSURE SWITCH: CONVENTIONAL PRESSURE			
RASCO AIR,QRM2-25115-4050 1/4HP,115,TL	687200040		C\$ 4,122.68
RASCO AIR,QRM2-50115-4050 1/2HP,115,TL	687200042		C\$ 5,595.54
RASCO AIR,QRM2-25220-4050 1/4HP,220,TL	687200041		C\$ 4,465.67
RASCO AIR,QRM2-50220-4050 1/2HP,220,TL	687200043		C\$ 5,837.66
QRM2 AIR COMPRESSORS - TANK MOUNTED			
RASCO AIR,QRM2-25115T 1/4HP,115,TANK	687200003		C\$ 6,530.37
RASCO AIR,QRM2-25220T 1/4HP,220,TANK	687200004		C\$ 6,987.70
RASCO AIR,QRM2-50115T 1/2HP,115,TANK	687200007		C\$ 7,431.58
RASCO AIR,QRM2-50220T 1/2HP,220,TANK	687200008		C\$ 7,747.67
RASCO AIR,QRM2-100115T,1 HP,115,TANK	687200009		C\$ 10,767.38
RASCO AIR,QRM2-100220T,1 HP,220,TANK	687200010	1QRM220T	C\$ 10,451.29
RASCO AIR,QRM2-25220T-50HZ,1/4,220,TANK	687200012		C\$ 6,987.70
RASCO AIR,QRM2-50220T-50HZ,1/2,220,TANK	687200014		C\$ 7,747.67
RASCO AIR,QRM2-100220T-50HZ,1,220,TANK	687200015		C\$ 10,451.29
CONNECTION KITS			
CONNECTION KIT, TANKLESS COMPRESSOR	650120011G	CKTL	C\$ 1,558.44
CONNECTION KIT, TANK MOUNTED COMPRESSOR	650120011H	CKTM	C\$ 1,718.12
FLEX HOSE ONLY			
FLEX HOSE, STAINLESS STEEL, 1/2" x 30"			C\$ Call



RRM RISER MOUNTED AIR COMPRESSOR

- See Bulletin 258



RTM TANK MOUNTED AIR COMPRESSOR

- See Bulletin 258

Description	Part Number	Short Code	List Price
RRM AIR COMPRESSORS - RISER MOUNTED			
RASCO AIR,RRMA23016-2026,1/6HP,115/220V	6990027979		C\$ 4,163.03
RASCO AIR,RRMA40033-2026,1/3HP,115/220V	6990027980		C\$ 4,936.45
RASCO AIR,RRMA70050-2026,1/2HP,115/220V	6990027981		C\$ 6,530.37
RASCO AIR,RRMA23016-4050,1/6HP,115,CP	6990027982		C\$ 4,163.03
RASCO AIR,RRMA40033-4050,1/3HP,115,CP	6990027983		C\$ 4,936.45
RASCO AIR,RRMA70050-4050,1/2HP,115,CP	6990027984		C\$ 6,530.37
RTM AIR COMPRESSORS - TANK MOUNTED			
RASCO AIR,RTMA25033-80100,1/3HP,115/220V	6990027985		C\$ 7,640.07
RASCO AIR,RTMA36575-80100,3/4HP,115/220V	6990027986		C\$ 10,948.97
RASCO AIR,RTMA550100-80100,1HP,115/220V	6990027987		C\$ 13,639.13
RASCO AIR,RTMA915150-80100,1-1/2HP,1PH	6990027988		C\$ 17,849.24
RASCO AIR,RTMA1100200-80100,2HP,1PH	6990027989		C\$ 20,337.64
CONNECTION KITS			
Connection Kit, Tankless Compressor	650120011G	CKTL	C\$ 1,558.44
Connection Kit, Tank Mounted Compressor	650120011H	CKTM	C\$ 1,718.12
FLEX HOSE -- SOLD SEPARATELY			
Flex Hose, Stainless Steel, 1/2" x 30"			C\$ Call

Features

- Three riser mount tank-less options (RRM)
- Five tank mounted options (RTM)
- Quiet oil-less piston compressors
- UL Listed pressure switch
- Flexile connection kits

Notes:

1. Models 16RRM, 13RRM, and 12RRM are preset at 20 psi start/26 psi stop for use with low pressure systems such as the Model DDX-LP and Model EX.
2. Models 16RRM4050, 13RRM4050, and 12RRM4050 are preset at 40 psi start/50 psi stop for use with conventional differential valves such as the Model FX and Model D.

AIR COMPRESSORS



Description	Part Number	Short Code	List Price
GAST AIR COMPRESSORS -- BARE			
1/6 HP, 115-60-1, Gast 1LAA-10-M100X	6999990904	16A	C\$ 2,495.34
1/4 HP, 115-60-1, Gast 2LAF-10-M200X	6999991538	14A	C\$ 2,640.93
1/3 HP, 115-60-1, Gast 3LBA-33-M300X			C\$ Call
1/2 HP, 115-60-1, Gast 4LCB-10-M450X	6999991518	12A	C\$ 3,920.87
3/4 HP, 115/230-60-1, Gast 5LCA-23-550NGX			C\$ Call
1 HP, 115/230-60-1, Gast 6LCF-10-M616X	6999991315	1A	C\$ 4,909.55
1-1/2 HP, 115/230-60-1, Gast 7LDE-10-M700X	6702000150	112A	C\$ 8,796.56
2 HP, 115/230-60-1, Gast 8LDF-10-M850X			C\$ Call
GAST AIR COMPRESSORS WITH CHECK VALVE AND PRESSURE SWITCH			
1/6 HP, 115-60-1, Gast 1LAA-32-M100X			C\$ Call
1/4 HP, 115-60-1, Gast 2LAF-12-M200X			C\$ Call
1/3 HP, 115-60-1, Gast 3LBA-32-M300X			C\$ Call
1/2 HP, 115-60-1, Gast 4LCB-21-M450X			C\$ Call
3/4 HP, 115/230-60-1, Gast 5LCA-22-M550X			C\$ Call
1 HP, 115/230-60-1, Gast 6LCF-13-M616X			C\$ Call
1-1/2 HP, 115/230-60-1, Gast 7LDE-16-M750X			C\$ Call
2 HP, 115/230-60-1, Gast 8LDF-16-M850X			C\$ Call
GAST AIR COMPRESSORS -- TANK MOUNTED			
1/6 HP, 115-60-1, Gast 1HAB-11T-M100X, 2 GAL	6999991027	16TA	C\$ 4,909.55
1/4 HP, 115-60-1, Gast 2LAF-11T-M200X, 12 GAL			C\$ Call
1/2 HP, 115-60-1, Gast 4LCB-11T-M450X, 20 GAL			C\$ Call
3/4 HP, 115/230-60-1, Gast 5LCA-11T-M550X, 20 GAL			C\$ Call
1 HP, 115/230-60-1, Gast 6LCF-11T-M616X, 30 GAL			C\$ Call
1-1/2 HP, 115/230-60-1, Gast 7LDE-11T-M750X, 30 GAL	6999991567	112TA	C\$15,432.92
2 HP, 115/230-60-1, Gast 8LDF-11TC-M850X, 30GAL			C\$ Call
GAST AIR COMPRESSORS -- REPAIR KITS *			
3/4 HP, Repair Kit	6888000020	K263	C\$ 649.14
1-1/2 HP, Repair Kit	6888000030	K303	C\$ 1,043.67
Riser Mounting Brackets #AT670	6999990969	GMB	C\$ 281.91
Riser Mounting Brackets #AT670A	6990007698	GMBL	C\$ 606.08

*Repair Kit Contains: Gaskets, Piston, Seals, Piston Rings, In/Out Valve Plates, Manifold Seals and Felts (for Filters)



Description	System Capacity	Part Number	Short Code	List Price
C-AIRE HEAVY DUTY - SINGLE PHASE - TANK MOUNTED				
S175-HD1-115 (115V, 1HP, 3 GALLON)	175 gallons	6990012386	C175	C\$ 5,203.18
S265H-HD1-115 (115V, 1-1/2 HP, 3 GALLON)	265 gallons	6990012600	C265	C\$ 5,299.22
S325H-HD1-115 (115V, 1-1/2 HP, 3 GALLON)	325 gallons	6990012601	C325	C\$ 5,435.48
S500H-HD1-115 (115V, 1-1/2 HP, 30 GALLON)	500 gallons	6990012602	C500	C\$ 8,308.03
S750H-HD1-230 (3HP,230V,30 GALLON H)	750 gallons	6990013997	C750	C\$ 9,484.17
S900H-HD1-230 (5HP,230V,30 GALLON H)	900 gallons	6990013998	C900	C\$ 9,699.12
S1300H-HD1-230S (5HP,230V,60 GALLON H)	1300 gallons	6990013999	C1300	C\$16,389.02
S1700H-HD1-230S (7.5HP,230V,60 GALLON H)	1700 gallons	6990014000	C1700	C\$17,330.92
C-AIRE STANDARD DUTY - SINGLE PHASE - TANK MOUNTED				
S300H-SD1-115 (1HP,115V,3 GALLON H)	300 gallons	6990013994	C300	C\$ 4,422.70

AIR COMPRESSORS



Description	System Capacity	Part Number	Short Code	List Price
GAST AIR COMPRESSORS - BARE				
1/6 HP, 115-60-1, 1LAA-10-M100X	90 Gallons	6999990904	16A	C\$2,495.34
1/4 HP, 115-60-1, 2LAF-10-M200X	150 Gallons	6999991538	14A	C\$2,640.93
1/3 HP, 115-60-1, 3LBA-33-M300X	180 Gallons			C\$ Call
1/2 HP, 115-60-1, 4LCB-10-M450X	300 Gallons	6999991518	12A	C\$3,920.87
3/4 HP, 115/208-230-60-1, 5LCA-23-550NGX	400 Gallons			C\$ Call
1 HP, 115/230-60-1, 6LCF-10-M616NEX	600 Gallons	6999991315	1A	C\$4,909.55
1.5 HP, 115/230-60-1, 7LDE-10-M700X	800 Gallons	6702000150	112A	C\$8,796.56
2 HP, 115/230-60-1, 8LDF-10-M850X	1000 Gallons			C\$ Call

*Above models can be outfitted with accessories of your own such as pressure switch, check valve, air tank and can also be used with a Model B Pressure Maintenance Device to set supervisory pressure settings. Voltage and power example above: 115-60-1 = 115 volts 60Hz 1-phase power



Description	System Capacity	Part Number	Short Code	List Price
GAST ROCKING PISTON AIR COMPRESSORS WITH SURGE TANK, CHECK VALVE AND DIGITAL PRESSURE SWITCH				
1/2 HP, 115-60-1, 87R-110S	See below			C\$ Call

*Above model features a digital pressure switch with adjustable pressure settings from 10 PSI up to 50 PSI and with a 5 PSI differential. Ultra quiet compressor and fast install Unistrut rail design for mounting to a riser. All mounting hardware and airline hose connector included. Use adjustable pressure settings for system pressure, or with a Model A Pressure Maintenance Device to set supervisory pressure settings. Voltage and power example above: 115-60-1 = 115 volts 60Hz 1-phase power. System Capacity (gallons) ratings: 10 PSI Cut-out = 1,350 Gallons; 18 PSI Cut-out = 725 Gallons; 40 PSI Cut-out = 300 Gallons. Consult factory for more capacity rating if needed



Description	System Capacity	Part Number	Short Code	List Price
UL LISTED - GAST AIR COMPRESSORS WITH CHECK VALVE AND PRESSURE SWITCH				
1/6 HP, UL 115-60-1, 1LAA-46S-M100GX	90 Gallons	6999995064	16PAU	C\$ 3,622.91
1/4 HP, UL 115-60-1, 2LAF-46S-M200EX	150 Gallons	6999995080	14PAU	C\$ 4,029.22
1/3 HP, UL 115-60-1, 3LBA-46S-M300AX	180 Gallons	6999995134	13PAU	C\$ 4,462.61
1/2 HP, UL 115-60-1, 4LCB-46S-M450GX	300 Gallons	6999995098	12PAU	C\$ 5,112.71
3/4 HP, UL 115/208-230-60-1, 5LCA-46S-M550GX	400 Gallons	6999995066	34PAU	C\$ 5,519.01
1 HP, UL 115/230-60-1, 6LCF-46S-M616NEX	600 Gallons	6999994852	1PAU	C\$ 6,223.28
1.5 HP, UL 115/230-60-1, 7LDE-46S-M750X	800 Gallons	6999995067	112PAU	C\$10,056.11
2 HP, UL 115/230-60-1, 8LDF-46S-M850X	1000 Gallons	6990008225	2PAU	C\$13,712.88

*Above models can be mounted to a riser using a Gast mounting bracket. Pressure switch is factory set with 40 PSI cut-in and 50 PSI cut-out pressure setting. Cut-in pressure cannot be adjusted below 30 PSI. On/Off differential of 10 PSI cannot be changed (example: if cut-in pressure is lowered to 30 PSI, then the cut-out pressure will be 40 PSI and cannot be changed) These compressors are rated for 50 PSI max pressure. Voltage and power example above: 115-60-1 = 115 volts 60Hz 1-phase power



Description	System Capacity	Part Number	Short Code	List Price
NON UL-LISTED GAST AIR COMPRESSORS WITH CHECK VALVE AND PRESSURE SWITCH				
1/6 HP, 115-60-1, 1LAA-32-M100X	90 Gallons			C\$ Call
1/4 HP, 115-60-1, 2LAF-12-M200X	150 Gallons			C\$ Call
1/3 HP, 115-60-1, 3LBA-32-M300X	180 Gallons			C\$ Call
1/2 HP, 115-60-1, 4LCB-21-M450X	300 Gallons			C\$ Call
3/4 HP, 115/230-60-1, 5LCA-22-M550X	400 Gallons			C\$ Call
1 HP, 115/230-60-1, 6LCF-13-M616X	600 Gallons			C\$ Call
1.5 HP, 115/230-60-1, 7LDE-16-M750X	800 Gallons			C\$ Call
2 HP, 115/230-60-1, 8LDF-16-M850X	1000 Gallons			C\$ Call

*Above models can be mounted to a riser using a Gast mounting bracket. Pressure switch is factory set with 40 PSI cut-in and 50 PSI cut-out pressure setting. Cut-in pressure cannot be adjusted below 30 PSI. On/Off differential of 10 PSI cannot be changed (example: if cut-in pressure is lowered to 30 PSI, then the cut-out pressure will be 40 PSI and cannot be changed) These compressors are rated for 50 PSI max pressure. Voltage and power example above: 115-60-1 = 115 volts 60Hz 1-phase power

Items shown on this sheet may not be stocked at all Reliable warehouses. Please contact your local Reliable Warehouse for Availability. Refer to technical data sheets for specific listings, approvals and design parameters.

AIR COMPRESSORS



Description	System Capacity	Part Number	Short Code	List Price
NON UL-LISTED GAST AIR COMPRESSORS - TANK MOUNTED AND 100 PSI				
1/6 HP, 115-60-1, 1HAB-11T-M100X,2 GAL	80 Gallons	6999991027	16TA	C\$ 4,909.55
3/4 HP, 115/230-60, 55HCD-11T-M550NGX, 20 GAL	340 Gallons			C\$ Call
1.5 HP, 230-60-1, 7HDD-11TA-M750X, 30 GAL	660 Gallons	6990013330		C\$22,928.74

*Above models have stored air pressure at 100 PSI. Cut-in pressure of 80 PSI (70 PSI on the 1HAB only) Cut-out pressure of 100 PSI. Use with a Model A Pressure Maintenance Device for supervisory pressure settings. Compressor will cycle less and last longer than compressors with lower max pressure ratings. Voltage and power example above: 115-60-1 = 115 volts 60Hz 1-phase power (if no number shown after 60Hz it is 1-phase power)

Description	System Capacity	Part Number	Short Code	List Price
NON UL-LISTED GAST AIR COMPRESSORS - TANK MOUNTED AND 50 PSI				
1/4 HP, 115-60-1, 2LAF-11T-M200X 12 GAL	150 Gallons			C\$ Call
1/2 HP, 115-60-1, 4LCB-11T-M450X 20 GAL	300 Gallons			C\$ Call
3/4 HP, 115/230-60 5LCA-11T-M550X 20 GAL	400 Gallons			C\$ Call
1 HP, 115/230-60-1,6LCF-11T-M616X 30 GAL	600 Gallons			C\$ Call
1.5 HP, 115/230-60,7LDE-11T-M750X,30 GAL	800 Gallons	6999991567	112TA	C\$15,432.92
2 HP, 115/230-60-1,8LDF-11TA-M850X,30GAL	1000 Gallons			C\$ Call

*Above models have stored air pressure at 50 PSI. Cut-in pressure of 30 PSI and cut-out pressure of 50 PSI. Use with a Model A Pressure Maintenance Device for supervisory pressure settings if needed. Voltage and power example above: 115-60-1 = 115 volts 60Hz 1-phase power (if no number shown after 60Hz it is 1-phase power)

Description	System Capacity	Part Number	Short Code	List Price
UL-LISTED GAST AIR COMPRESSORS - TANK MOUNTED AND 50 PSI				
1/6HP, UL 115-60-1, 1LAA-46T-M100GX, 2GAL	90 Gallons	6999995091	16TAU	C\$ 5,586.73
1/4HP, UL 115-60-1, 2LAF-46T-M200EX, 12GAL	150 Gallons	6999995111	14TAU	C\$ 7,753.71
1/3HP, UL 115-60-1, 3LBA-46T-M300AX, 12GAL	180 Gallons	6999993433	13TAU	C\$ 8,864.28
1/2HP, UL 115-60-1, 4LCB-46T-M450GX, 20GAL	300 Gallons	6999995114	12TAU	C\$10,123.83
3/4HP, 115/230-60-1, 5LCA-46T-M550GX, 20GAL	400 Gallons	6999995110	34TAU	C\$10,218.64
1HP, 115/230-60-1, 6LCF-46T-M616NEX, 30GAL	600 Gallons	6999995136	1TAU	C\$10,530.13
1.5HP, 115/230-60-1, 7LDE-46T-M750X, 30GAL	800 Gallons	6999995056	112TAU	C\$15,974.66
2 HP, 115/230-60-1, 8LDF-46T-M850X, 30GAL	1000 Gallons	6990011326	2TAU	C\$21,297.29

*Above models are UL Listed air tank compressors and have stored air pressure at 50 PSI. Cut-in pressure of 30 PSI and cut-out pressure of 50 PSI. Use with a Model A Pressure Maintenance Device for supervisory pressure settings if needed. Voltage and power example above: 115-60-1 = 115 volts 60Hz 1-phase power

Description	Part Number	Short Code	List Price
GAST AIR COMPRESSOR - REPAIR KITS*			
K1002 FLOOR MOUNT KIT (87R)	6990026509	K1022	C\$ 143.29
K263 REPAIR KIT, 3/4HP	6888000020	K263	C\$ 649.14
K303 REPAIR KIT 1-1/2HP	6888000030	K303	C\$ 1,043.67
AT670 MOUNTING BRACKETS,1/6-1 HP	6999990969	GMB	C\$ 281.91
AT670A,MOUNTING BRACKET,1.5-2 HP	6990007698	GMBL	C\$ 606.08
SSP-87R6-01 SOUND SHIELD KIT	6990026510	SSP87R6	C\$ 714.36

*Repair Kit Contains: Gaskets, Piston, Seals, Piston Rings, In/Out Valve Plates, Manifold Seals and Felts (for Filters). SSP-87R6-01 Sound Shield kit provides a retrofit kit of part for Gast 87R-110S compressor shown above and reduces sound levels up to 20%

Items shown on this sheet may not be stocked at all Reliable warehouses. Please contact your local Reliable Warehouse for Availability. Refer to technical data sheets for specific listings, approvals and design parameters.



AIR COMPRESSORS

Description	System Capacity	Part Number	Short Code	List Price
HEAVY DUTY - SINGLE PHASE - TANK MOUNTED				
S175-HD1-115 (115V, 1HP, 3 GALLON)	175 gallons	6990012386	C175	C\$ 5,203.18
S265H-HD1-115 (115V, 1-1/2 HP, 3 GALLON)	265 gallons	6990012600	C265	C\$ 5,299.22
S325H-HD1-115 (115V, 1-1/2 HP, 3 GALLON)	325 gallons	6990012601	C325	C\$ 5,435.48
S500H-HD1-115 (115V, 1-1/2 HP, 30 GALLON)	500 gallons	6990012602	C500	C\$ 8,308.03
S750H-HD1-230 (3HP,230V,30 GALLON H)	750 gallons	6990013997	C750	C\$ 9,484.17
S900H-HD1-230 (5HP,230V,30 GALLON H)	900 gallons	6990013998	C900	C\$ 9,699.12
S1300H-HD1-230S (5HP,230V,60 GALLON H)	1300 gallons	6990013999	C1300	C\$ 16,389.02
S1700H-HD1-230S (7.5HP,230V,60 GALLON H)	1700 gallons	6990014000	C1700	C\$ 17,330.92
STANDARD DUTY - SINGLE PHASE - TANK MOUNTED				
S300H-SD1-115 (1HP,115V,3 GALLON H)	300 gallons	6990013994	C300	C\$ 4,422.70
RISER MOUNTED				
C-AIRE,#S280R-LD1-115P		7M99004812	C280R	C\$ 3,761.26
C-AIRE,#S281R-LD1-115PD		7M99004813	C281R	C\$ 5,540.73

Items shown on this sheet may not be stocked at all Reliable warehouses. Please contact your local Reliable Warehouse for Availability. Refer to technical data sheets for specific listings, approvals and design parameters.

VALVE ACCESSORIES

- Additional Sprinkler and Valve Signs available upon request

Description	Part Number	Short Code	List Price
PRESSURE GAUGES			
GAUGE,WATER,0-300,1/4	98248001	WATER	C\$ 161.95
GAUGE,AIR,0-80,1/4NPT	98248000	AIR	C\$ 173.16
GAUGE,AIR,58 OZ,1/4NPT	98248002	AIRO	C\$ 613.32
INSPECTORS TEST CONNECTIONS			
Sight Test Type (Model B)	6851010000	ISC	C\$ 668.86
Blind Test Type (Model A)	6851020000	IBC	C\$ 222.96
AUTOMATIC BALL DRIPS			
1/2,BALL DRIP VALVE,AUTO	78653500	5ABD	C\$ 384.36
3/4,BALL DRIP VALVE,AUTO,MOD C	78653700	75ABD	C\$ 439.18
MECHANICAL BALL DRIPS			
BALL DRIP VALVE 1/2" MECHANICAL MOD. C	78653100	5MBD	C\$ 686.13
1/2,BALL DRIP VALVE,MECH,MOD D	78653800		C\$ 439.18
STRAINER			
3/4" NPT (Female)	78650200	34ST	C\$ 403.25
MISCELLANEOUS			
Model C Sight Drain 2" NPT (Female)	6863000000	2ISC	C\$ 725.52
Model B Drum Drip Only 3/4" NPT (Female)	71010448		C\$ 440.69
Model A Fill Cup 1/2" NPT (Female)	75000050	5FC	C\$ 207.99
Model A Fill Cup 3/4" NPT (Female)	75000075	75FC	C\$ 235.32
Model A Control Valve Seal Only	6869800000		C\$ 57.48
SIGNS—MODEL A			
Valve Control Sign	6892011000	VCS	C\$ 24.09
SIGNS—MODEL B			
Inspector Test Sign	6892110000	ITS	C\$ 5.56
Open Sprinkler Control Sign	6892030000	OSCS	C\$ 5.56
Open Sprinkler Drain Sign	6892040000	OSDS	C\$ 5.56
Test Valve Sign	6892050000	TVS	C\$ 5.56
Water Motor Line Sign	6892060000	WMLS	C\$ 5.56
Auxiliary Drain Sign	6892070000	ADS	C\$ 5.56
Main Drain Sign	6892080000	MDS	C\$ 5.56
Drain Sign	6892090000	DS	C\$ 5.56
Alarm Test Sign	6892100000	ATS	C\$ 5.56
SIGNS—MODEL C			
Cold Weather Sign	6892010000	CWS	C\$ 15.58
SIGNS—MODEL D			
Fire Alarm Sign	6892020000	FAS	C\$ 24.09
SIGNS—MODEL E			
Hydraulically Calculated System	6892120000	HCS	C\$ 16.13

Notes:

*PERSONALIZED PRESSURE GAUGES ARE AVAILABLE UPON REQUEST. PLEASE CONTACT OUR CUSTOMER SERVICE DEPARTMENT FOR MORE INFORMATION.



RESIDENTIAL RISERS

- GROOVED END
- See Bulletin 425
- WITH POTTER SWITCHES

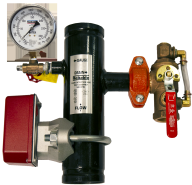
RESIDENTIAL RISERS

- THREADED MALE NPT 1" (25)
- See Bulletin 425
- WITH POTTER SWITCHES

Description	Size	Part Number	Short Code	List Price
RESIDENTIAL RISER WITH THREAD FEMALE NPT 1" (25) - POTTER				
1" RES RISER ASSEMBLY,POTTER		6A000RP000	1RRNP	C\$2,054.30
1 1/2" RES RISER ASSEMBLY,POTTER		6A030RP000	15RRNP	C\$2,054.30
2" RES RISER ASSEMBLY,POTTER		6A060RP000	2RRNP	C\$2,256.44
RESIDENTIAL RISER WITH THREADED MALE NPT 1"(25)- POTTER				
1" Res Riser Assembly MNPT		6A020RP000		C\$2,082.86
RESIDENTIAL RISER WITH PRESSURE RELIEF VALVE MALE NPT 1" (25)-POTTER				
1" RES RISER ASSBLY MNPT W/PRV 175 PTR R		6A020RP001		C\$2,999.31
1" RES RISER ASSBLY MNPT W/PRV 185 PTR R		6A020RP002		C\$2,999.31
RESIDENTIAL RISER WITH TEST & DRAIN MALE NPT 1" (25) POTTER				
1" RES RISER MNPT W/2.8 TD PTR R MTO		6A020RP010		C\$3,165.94
1" RES RISER MNPT W/4.2 TD PTR R		6A020RP020		C\$3,165.94
1" RES RISER MNPT W/5.6 TD PTR R		6A020RP030		C\$3,165.94
RESIDENTIAL RISER WITH TEST & DRAIN, PRV 175& 185 PSI MALE NPT 1" POTTER				
1" RES RISER MNPT W/2.8 TD PRV 175 PTR R		6A020RP011		C\$3,499.19
1" RES RISER MNPT W/2.8 TD PRV 185 PTR R		6A020RP012		C\$3,499.19
1" RES RISER MNPT W/4.2 TD PRV 175 PTR R		6A020RP021		C\$3,499.19
1" RES RISER MNPT W/4.2 TD PRV 185 PTR R		6A020RP022		C\$3,499.19
1" RES RISER MNPT W/5.6 TD PRV 175 PTR R		6A020RP031		C\$3,499.19
1" RES RISER MNPT W/5.6 TD PRV 185 PTR R		6A020RP032		C\$3,499.19
RESIDENTIAL RISER GROOVED END POTTER				
1 1/2" RES RISER ASSEMBLY GE PTR N		6A050RP000		C\$2,082.86
RESIDENTIAL RISER GROOVED END WITH PRESSURE RELIEF VALVE POTTER				
1 1/2" RES RISER GE PRV 175 PTR R		6A050RP001		C\$2,999.31
1 1/2" RES RISER GE PRV 185 PTR R		6A050RP002		C\$2,999.31
RESIDENTIAL RISER GROOVED END WITH TEST& DRAIN POTTER				
1 1/2" RES RISER ASSY GE W/2.8K TD PTR R		6A050RP010		C\$3,165.94
1 1/2" RES RISER ASSY GE W/4.2K TD PTR R		6A050RP020		C\$3,165.94
1 1/2" RES RISER GE W/5.6K TD PTR		6A050RP030		C\$3,165.94
RESIDENTIAL RISER GE WITH TEST & DRAIN,PRV 175& 185 PSI POTTER				
1 1/2" RES RISER GE W/2.8K TD PRV175 P R		6A050RP011		C\$3,499.19
1 1/2" RES RISER GE W/2.8K TD PRV185 P R		6A050RP012		C\$3,499.19
1 1/2" RESRISER GE W/4.2 TD PRV175 PTR R		6A050RP021		C\$3,499.19
1 1/2" RESRISER GE W/4.2 TD PRV185 PTR R		6A050RP022		C\$3,499.19
1 1/2" RESRISER GE W/5.6 TD PRV175 PTR R		6A050RP031		C\$3,499.19
1 1/2" RESRISER GE W/5.6 TD PRV185 PTR R		6A050RP032		C\$3,499.19

Model CR Commercial Riser For Commercial Applications

- For Commercial Applications
- See Bulletin 621
- **With Potter Switch**



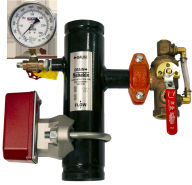
Model CR Commercial Riser with Test & Drain

- For Commercial Applications
- See Bulletin 621
- **With Potter Switch**

Description	Size	Part Number	Short Code	List Price
MODEL CR COMMERCIAL RISER WITH BASIC TRIM-POTTER SWITCH				
Model CR Commercial Riser - Threaded	1-1/2" (40mm)	6A080CP000	15CRBPE	C\$2,205.39
Model CR Commercial Riser - Threaded	2" (50mm)	6A090CP000	2CRBPE	C\$2,538.65
Model CR Commercial Riser - Grooved	2" (50mm)	6A100CP000	2CRGBPE	C\$2,205.39
Model CR Commercial Riser - Grooved	2-1/2" (65mm)	6A120CP010	25CRGBPE	C\$2,421.79
Model CR Commercial Riser - Grooved	3" (80mm)	6A140CP010	3CRGBPE	C\$2,520.01
Model CR Commercial Riser - Grooved	4" (100mm)	6A160CP020	4CRGBPE	C\$2,992.37
Model CR Commercial Riser - Grooved	6" (150mm)	6A180CP020	6CRGBPE	C\$3,267.81
Model CR Commercial Riser - Grooved	8" (200mm)	6A190CP020	8CRGBPE	C\$3,582.57
MODEL CR COMMERCIAL RISER WITH TEST & DRAIN 2.8K-POTTER SWITCH				
Model CR Commercial Riser w- Test&Drain - Threaded	1-1/2" (40mm)	6A080CP030	15CR28PE	C\$2,524.43
Model CR Commercial Riser w- Test&Drain - Threaded	2" (50mm)	6A090CP030	2CR28PE	C\$2,524.43
Model CR Commercial Riser w- Test&Drain - Grooved	2" (50mm)	6A100CP030	2CRG28PE	C\$2,436.11
MODEL CR COMMERCIAL RISER WITH TEST & DRAIN 4.2K-POTTER SWITCH				
Model CR Commercial Riser w- Test&Drain - Threaded	1-1/2" (40mm)	6A080CP040	15CR42PE	C\$2,524.43
Model CR Commercial Riser w- Test&Drain - Threaded	2" (50mm)	6A090CP040	2CR42PE	C\$2,524.43
Model CR Commercial Riser w- Test&Drain - Grooved	2" (50mm)	6A100CP040	2CRG42PE	C\$2,436.11
Model CR Commercial Riser w- Test&Drain - Grooved	2-1/2" (65mm)	6A120CP060	25CRG42PE	C\$2,789.36
Model CR Commercial Riser w- Test&Drain - Grooved	3" (80mm)	6A140CP060	3CRG42PE	C\$2,789.36
Model CR Commercial Riser w- Test&Drain - Grooved	4" (100mm)	6A170CP270	4CRG28PE	C\$3,495.87
MODEL CR COMMERCIAL RISER WITH TEST & DRAIN 5.6K-POTTER SWITCH				
Model CR Commercial Riser w- Test&Drain - Threaded	1-1/2" (40mm)	6A080CP050	15CR56PE	C\$2,524.43
Model CR Commercial Riser w- Test&Drain - Threaded	2" (50mm)	6A090CP050	2CR56PE	C\$2,524.43
Model CR Commercial Riser w- Test&Drain - Grooved	2" (50mm)	6A100CP050	2CRG56PE	C\$2,436.11
Model CR Commercial Riser w- Test&Drain - Grooved	2-1/2" (65mm)	6A120CP070	25CRG56PE	C\$2,789.36
Model CR Commercial Riser w- Test&Drain - Grooved	3" (80mm)	6A140CP070	3CRG56PE	C\$2,789.36
Model CR Commercial Riser w- Test&Drain - Grooved	4" (100mm)	6A160CP100	4CRG56PE	C\$3,495.87
Model CR Commercial Riser w- Test&Drain - Grooved	6" (150mm)	6A180CP100	6CRG56PE	C\$3,584.18
Model CR Commercial Riser w- Test&Drain - Grooved	8" (200mm)	6A190CP100	8CRG56PE	C\$4,379.00
MODEL CR COMMERCIAL RISER WITH TEST & DRAIN 8.0K-POTTER SWITCH				
Model CR Commercial Riser w- Test&Drain - Grooved	2-1/2" (65mm)	6A120CP080	25CRG80PE	C\$2,789.36
Model CR Commercial Riser w- Test&Drain - Grooved	3" (80mm)	6A140CP080	3CRG80PE	C\$2,789.36
Model CR Commercial Riser w- Test&Drain - Grooved	4" (100mm)	6A160CP110	4CRG80PE	C\$3,495.87
Model CR Commercial Riser w- Test&Drain - Grooved	6" (150mm)	6A180CP110	6CRG80PE	C\$3,584.18
Model CR Commercial Riser w- Test&Drain - Grooved	8" (200mm)	6A190CP110	8CRG80PE	C\$4,379.00
MODEL CR COMMERCIAL RISER WITH TEST & DRAIN 11.2K-POTTER SWITCH				
Model CR Commercial Riser w- Test&Drain - Grooved	2-1/2" (65mm)	6A120CP090	25CRG112PE	C\$2,789.36
Model CR Commercial Riser w- Test&Drain - Grooved	3" (80mm)	6A140CP090	3CRG112PE	C\$2,789.36
Model CR Commercial Riser w- Test&Drain - Grooved	4" (100mm)	6A160CP120	4CRG112PE	C\$3,495.87
Model CR Commercial Riser w- Test&Drain - Grooved	6" (150mm)	6A180CP120	6CRG112PE	C\$3,584.18
Model CR Commercial Riser w- Test&Drain - Grooved	8" (200mm)	6A190CP120	8CRG112PE	C\$4,379.00
MODEL CR COMMERCIAL RISER WITH TEST & DRAIN 16.8K-POTTER SWITCH				
Model CR Commercial Riser w- Test&Drain - Grooved	4" (100mm)	6A160CP130	4CRG168PE	C\$3,495.87
Model CR Commercial Riser w- Test&Drain - Grooved	6" (150mm)	6A180CP130	6CRG168PE	C\$3,584.18
Model CR Commercial Riser w- Test&Drain - Grooved	8" (200mm)	6A190CP130	8CRG168PE	C\$4,379.00
PRESSURE RELIEF KITS				
Pressure Relief Trim - 175 PSI	All Sizes	6501203550	PRT175	C\$ 325.36
Pressure Relief Trim - 185 PSI	All Sizes	6501203545	PRT185	C\$ 325.36
Pressure Relief Trim - 210 PSI	All Sizes	6501213550	PRT210	C\$ 325.36
Pressure Relief Trim - 260 PSI	All Sizes	6501203546	PRT260	C\$ 488.05
Pressure Relief Trim - 310 PSI	All Sizes	6501203547	PRT310	C\$ 488.05

Model CR Commercial Riser & PRV

- For Commercial Applications
- See Bulletin 621
- **With Potter Switch**



Model CR Commercial Riser with Test & Drain & PRV

- For Commercial Applications
- See Bulletin 621
- Items listed are with the 175 Pressure Relief Valve
- **With Potter Switch**

Description	Size	Part Number	Short Code	List Price
MODEL CR COMMERCIAL RISER WITH BASIC TRIM & PRV 175 PSI				
Model CR Commercial Riser - Threaded	1-1/2" (40mm)	6A080CP001	15CRBPP	C\$2,735.27
Model CR Commercial Riser - Threaded	2" (50mm)	6A090CP001	2CRBPP	C\$2,751.93
Model CR Commercial Riser - Grooved	2" (50mm)	6A100CP001	2CRGBPP	C\$2,735.27
Model CR Commercial Riser - Grooved	2-1/2" (65mm)	6A120CP011	25CRGBPP	C\$3,049.88
Model CR Commercial Riser - Grooved	3" (80mm)	6A140CP011	3CRGBPP	C\$3,049.88
Model CR Commercial Riser - Grooved	4" (100mm)	6A160CP021	4CRGBPP	C\$3,522.26
Model CR Commercial Riser - Grooved	6" (150mm)	6A180CP021	6CRGBPP	C\$3,797.70
Model CR Commercial Riser - Grooved	8" (200mm)	6A190CP021	8CRGBPP	C\$4,112.45
MODEL CR COMMERCIAL RISER WITH TEST & DRAIN & PRV K2.8 175 PSI				
Model CR Commercial Riser w- Test&Drain - Threaded	1-1/2" (40mm)	6A080CP031	15CR28PP	C\$3,054.30
Model CR Commercial Riser w- Test&Drain - Threaded	2" (50mm)	6A090CP031	2CR28PP	C\$3,054.30
Model CR Commercial Riser w- Test&Drain - Grooved	2" (50mm)	6A100CP031	2CRG28PP	C\$2,965.98
MODEL CR COMMERCIAL RISER WITH TEST & DRAIN & PRV K4.2 175 PSI				
Model CR Commercial Riser w- Test&Drain - Threaded	1-1/2" (40mm)	6A080CP041	15CR42PP	C\$3,054.30
Model CR Commercial Riser w- Test&Drain - Threaded	2" (50mm)	6A090CP041	2CR42PP	C\$3,054.30
Model CR Commercial Riser w- Test&Drain - Grooved	2" (50mm)	6A100CP041	2CRG42PP	C\$2,965.98
Model CR Commercial Riser w- Test&Drain - Grooved	2-1/2" (65mm)	6A120CP061	25CRG42PP	C\$3,319.24
Model CR Commercial Riser w- Test&Drain - Grooved	3" (80mm)	6A140CP061	3CRG42PP	C\$3,319.24
MODEL CR COMMERCIAL RISER WITH TEST & DRAIN & PRV K5.6 175 PSI				
Model CR Commercial Riser w- Test&Drain - Threaded	1-1/2" (40mm)	6A080CP051	15CR56PP	C\$3,054.30
Model CR Commercial Riser w- Test&Drain - Threaded	2" (50mm)	6A090CP051	2CR56PP	C\$3,054.30
Model CR Commercial Riser w- Test&Drain - Grooved	2" (50mm)	6A100CP051	2CRG56PP	C\$2,965.98
Model CR Commercial Riser w- Test&Drain - Grooved	2-1/2" (65mm)	6A120CP071	25CRG56PP	C\$3,319.24
Model CR Commercial Riser w- Test&Drain - Grooved	3" (80mm)	6A140CP071	3CRG56PP	C\$3,319.24
Model CR Commercial Riser w- Test&Drain - Grooved	4" (100mm)	6A160CP101	4CRG56PP	C\$4,342.33
Model CR Commercial Riser w- Test&Drain - Grooved	6" (150mm)	6A180CP101	6CRG56PP	C\$4,528.97
Model CR Commercial Riser w- Test&Drain - Grooved	8" (200mm)	6A190CP101	8CRG56PP	C\$4,908.87
MODEL CR COMMERCIAL RISER WITH TEST & DRAIN & PRV K8.0 175 PSI				
Model CR Commercial Riser w- Test&Drain - Grooved	2-1/2" (65mm)	6A120CP081		C\$3,319.24
Model CR Commercial Riser w- Test&Drain - Grooved	3" (80mm)	6A140CP081		C\$3,319.24
Model CR Commercial Riser w- Test&Drain - Grooved	4" (100mm)	6A160CP111		C\$4,342.33
Model CR Commercial Riser w- Test&Drain - Grooved	6" (150mm)	6A180CP111		C\$4,528.97
Model CR Commercial Riser w- Test&Drain - Grooved	8" (200mm)	6A190CP111		C\$4,908.87
MODEL CR COMMERCIAL RISER WITH TEST & DRAIN & PRV K11.2 175 PSI				
Model CR Commercial Riser w- Test&Drain - Grooved	2-1/2" (65mm)	6A120CP091		C\$3,319.24
Model CR Commercial Riser w- Test&Drain - Grooved	3" (80mm)	6A140CP091		C\$3,319.24
Model CR Commercial Riser w- Test&Drain - Grooved	4" (100mm)	6A160CP121		C\$4,342.33
Model CR Commercial Riser w- Test&Drain - Grooved	6" (150mm)	6A180CP121		C\$4,528.97
Model CR Commercial Riser w- Test&Drain - Grooved	8" (200mm)	6A190CP121		C\$4,908.87
MODEL CR COMMERCIAL RISER WITH TEST & DRAIN & PRV K16.8 175 PSI				
Model CR Commercial Riser w- Test&Drain - Grooved	4" (100mm)	6A160CP131		C\$4,342.33
Model CR Commercial Riser w- Test&Drain - Grooved	6" (150mm)	6A180CP131		C\$4,528.97
Model CR Commercial Riser w- Test&Drain - Grooved	8" (200mm)	6A190CP131		C\$4,908.87
PRESSURE RELIEF KITS				
Pressure Relief Trim - 175 PSI	All Sizes	6501203550	PRT175	C\$ 325.36
Pressure Relief Trim - 185 PSI	All Sizes	6501203545	PRT185	C\$ 325.36
Pressure Relief Trim - 210 PSI	All Sizes	6501213550	PRT210	C\$ 325.36
Pressure Relief Trim - 260 PSI	All Sizes	6501203546	PRT260	C\$ 488.05
Pressure Relief Trim - 310 PSI	All Sizes	6501203547	PRT310	C\$ 488.05



Model FCA Floor Control Assembly with Test and Drain

- Potter Switch
- See Bulletin 619
- Grooved Component Connections for Universal Application



HV Hose Valves

- See Bulletin 444

Description	Size	Part Number	Short Code	List Price
MODEL FCA FLOOR CONTROL ASSEMBLY TEST AND DRAIN K2.8 - POTTER SWITCH				
Model FC Floor Control w- Test&Drain - Grooved	2" (50mm)	6B2000P011	2FC28P	C\$4,998.85
MODEL FCA FLOOR CONTROL ASSEMBLY WITH TEST & DRAIN K4.2 - POTTER SWITCH				
Model FC Floor Control w- Test&Drain - Grooved	2" (50mm)	6B2000P021	2FC42P	C\$4,998.85
Model FC Floor Control w- Test&Drain - Grooved	2 1/2" (66MM)	6B2500P041	25FC42P	C\$4,832.23
Model FC Floor Control w- Test&Drain - Grooved	3" (80mm)	6B3000P041	3FC42P	C\$5,665.37
MODEL FCA FLOOR CONTROL ASSEMBLY WITH TEST AND DRAIN K5.6 - POTTER SWITCH				
Model FC Floor Control w- Test&Drain - Grooved	2" (50mm)	6B2000P031	2FC56P	C\$4,998.85
Model FC Floor Control w- Test&Drain - Grooved	2 1/2"	6B2500P051	25FC56P	C\$4,832.23
Model FC Floor Control w- Test&Drain - Grooved	3"	6B3000P051	3FC56P	C\$5,665.37
Model FC Floor Control w- Test&Drain - Grooved	4"	6B4000P081	4FC56P	C\$5,665.37
MODEL FCA FLOOR CONTROL ASSEMBLY WITH TEST AND DRAIN K8.0 - POTTER SWITCH				
Model FC Floor Control w- Test&Drain - Grooved	2-1/2" (65mm)	6B2500P061	25FC80P	C\$4,832.23
Model FC Floor Control w- Test&Drain - Grooved	3" (80mm)	6B3000P061	3FC80P	C\$5,665.37
Model FC Floor Control w- Test&Drain - Grooved	4" (100mm)	6B4000P091	4FC80P	C\$5,665.37
MODEL FCA FLOOR CONTROL ASSEMBLY WITH TEST AND DRAIN K11.2 - POTTER SWITCH				
Model FC Floor Control w- Test&Drain - Grooved	2-1/2" (65mm)	6B2500P071	25FC112P	C\$4,832.23
Model FC Floor Control w- Test&Drain - Grooved	3" (80mm)	6B3000P071	3FC112P	C\$5,665.37
Model FC Floor Control w- Test&Drain - Grooved	4" (100mm)	6B4000P101	4FC112P	C\$5,665.37
MODEL FCA FLOOR CONTROL ASSEMBLY WITH TEST AND DRAIN K16.8 - POTTER SWITCH				
Model FC Floor Control w- Test&Drain - Grooved	4" (100mm)	6B4000P111	4FC168P	C\$5,665.37
STREAMLINE DRAIN HOSES				
RASCOFLEX,#RFDH12524TU,1.25"X2',MNPTXUN		7M99004448		C\$ 391.32
RASCOFLEX,#RFDH12548TU,1.25"X4',MNPTXUN		7M99004449		C\$ 493.51
RASCOFLEX,#RFDH248TG,2"X48",MNPTXGRV		7M99004450		C\$ 560.88
RASCOFLEX,#RFDH124TU,1"X2',MNPTXUNION		7M99004675		C\$ 359.47
RASCOFLEX,#RFDH12536TU,1.25"X3',MNPTXUN		7M99004676		C\$ 464.51
MODEL HV HOSE VALVES				
RASCO,#REL-HVT,1.5",FXM,HOSE VALVE	1 1/2"	7M99004574	15RAHV	C\$ 665.44
RASCO,#REL-HVT,2.5",FXM,HOSE VALVE	2 1/2"	7M99004576	25RAHV	C\$1,063.41
RASCO,#REL-HVG,2.5",GXM,HOSE VALVE	2 1/2"	7M99004578	25RAHVG	C\$1,139.21
MODEL HV HOSE VALVES ACCESSORIES				
RASCO,#REL-CC15,1.5",CAP+CHAIN,BRASS	1 1/2"	7M99004621	15RHVC	C\$ 126.87
RASCO,#REL-CC25,2.5",CAP+CHAIN,BRASS	2 1/2"	7M99004620	25RHVC	C\$ 159.52

Notes:

175 PSI Relief Valve Kit is provided and installed as standard equipment. Higher pressure relief valves (185, 210, 260 & 300 PSI) are available upon request.

Notes:

For 260 PSI and 310 PSI trim kits add \$100 to the list price