



Application

The ECMF, series are primarily for the industry :

- Water treatment processes
- Industrial cleaner and dishwasher
- Water boosting on process
- Heating and cooling for industrial process
- Air-conditioning system
- Air freshening ,heater device(soft water)
- Water supply and boosting(drinking water,light chlorine water)
- Fertilization/metering system
- Many other special using

Applicable medium

- Thin, clean, non-flammable and non-explosive liquid containing no solid granules and fibers;
- Mineral water, soft water, pure water, edible vegetable oil and other light chemical mediums.
- When the density or viscosity of to -be -conveyed liquid is larger than that of water, it is necessary to select a driving motor of high power.
- Whether a specific liquid is suitable for the pump depends on many factors, among which the most important ones are chlorine content, PH value, temperature, solvent and oil content.

Operation condition

- Liquid temperature: ambient temperature -15°C ~ +70°C, hot water less than 105°C;
- Max. environmental temperature: + 50°C
- Max. operating pressure: 10 bar
- Max. suction pressure is limited by max. Operating pressure

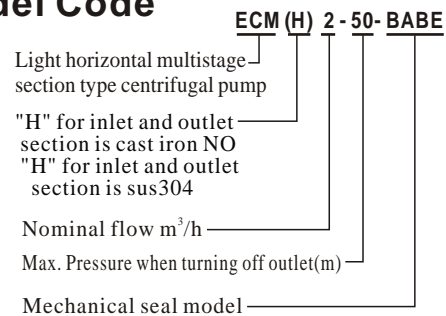
Electric Motor

- 2-pole induction motor;
- Single-phase: 110~220V/60Hz
- Three-phase: 220~380V/60Hz
- Insulation class: B or F
- Protection: IPX5
- Continuous duty
- Single-phase with input thermal protector

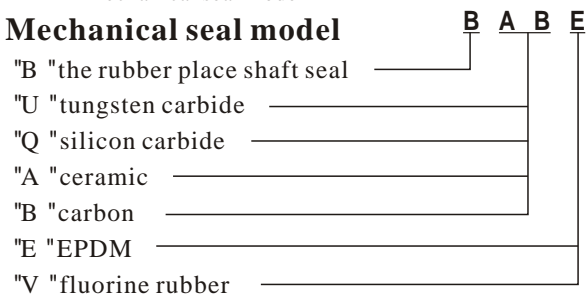
Pump

- Horizontal multistage non-self-priming centrifugal pump, attached with long shaft electric motor.
- Compact structure renders small size of pump; axial inlet and radial outlet.

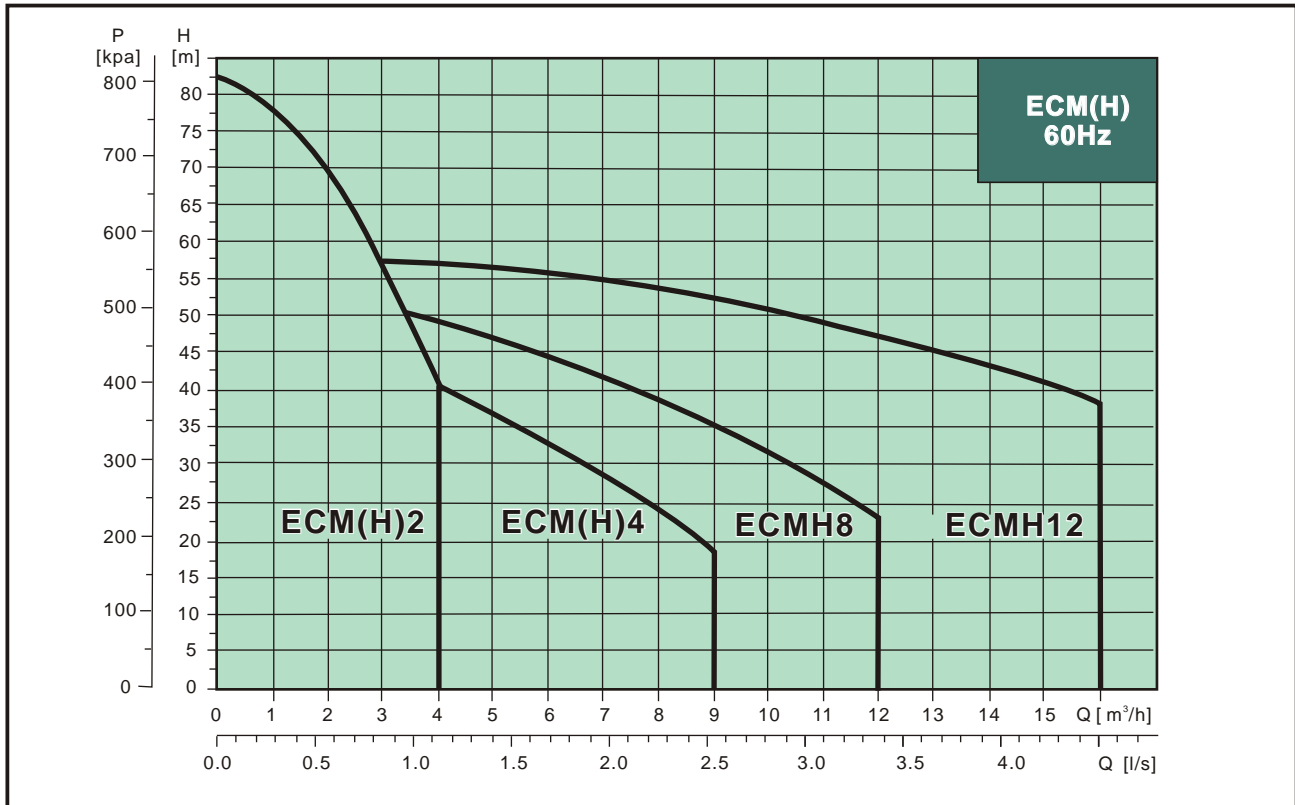
Model Code



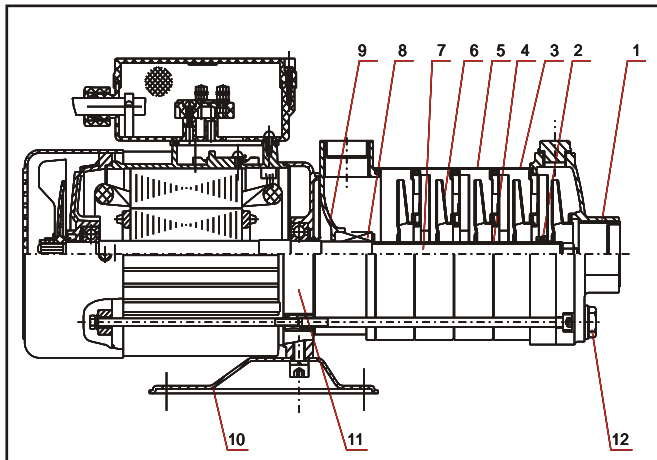
Mechanical seal model



Performance Range:



Construction & Material:



No.	Name	Material	AISI/ASTM
2	Bearing sleeve	Hard alloy	
3	Support guide vane	Stainless steel	AISI304 or AISI316
4	Separating sleeve	Stainless steel	AISI304 or AISI316
5	Middle section section	Stainless steel	AISI304 or AISI316
6	Impeller	Stainless steel	AISI304 or AISI316
7	Shaft	Stainless steel	AISI304L or AISI316
8	Mechanical seal	BABE	
10	Base frame	A3 steel	
11	Front cover	Aluminum alloy	
12	Plug	Stainless steel	
ECM			
1	Inlet section	Stainless steel	AISI304 or AISI316
9	Outlet section	Stainless steel	AISI304 or AISI316
ECMH			
1	Inlet section	Cast iron	
9	Outlet section	Cast iron	



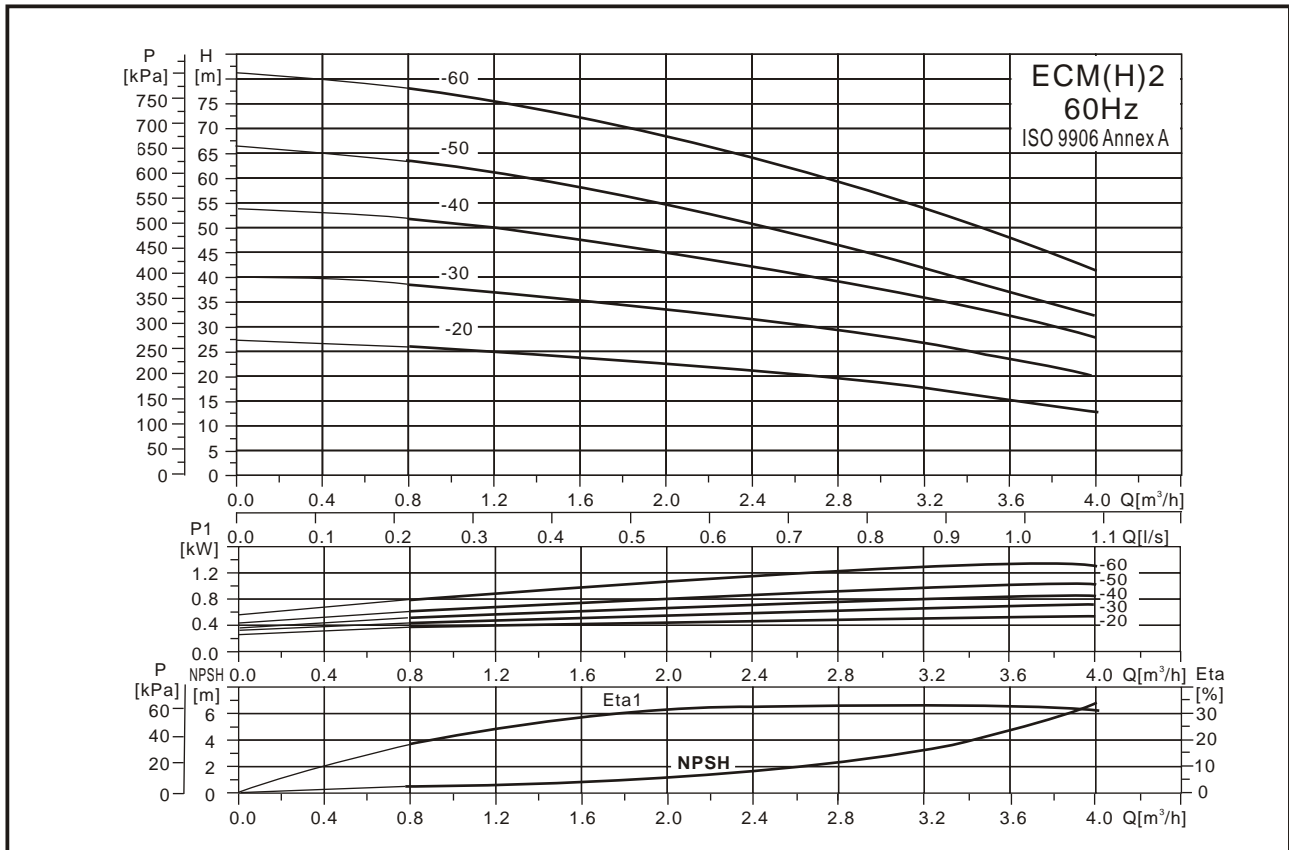
ECM(H)-SERIES

EVERGUSH®

Light Horizontal Multi-Stage Pump

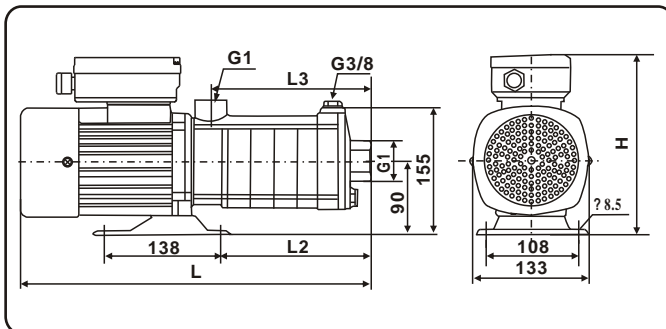
60Hz

Performance curve:



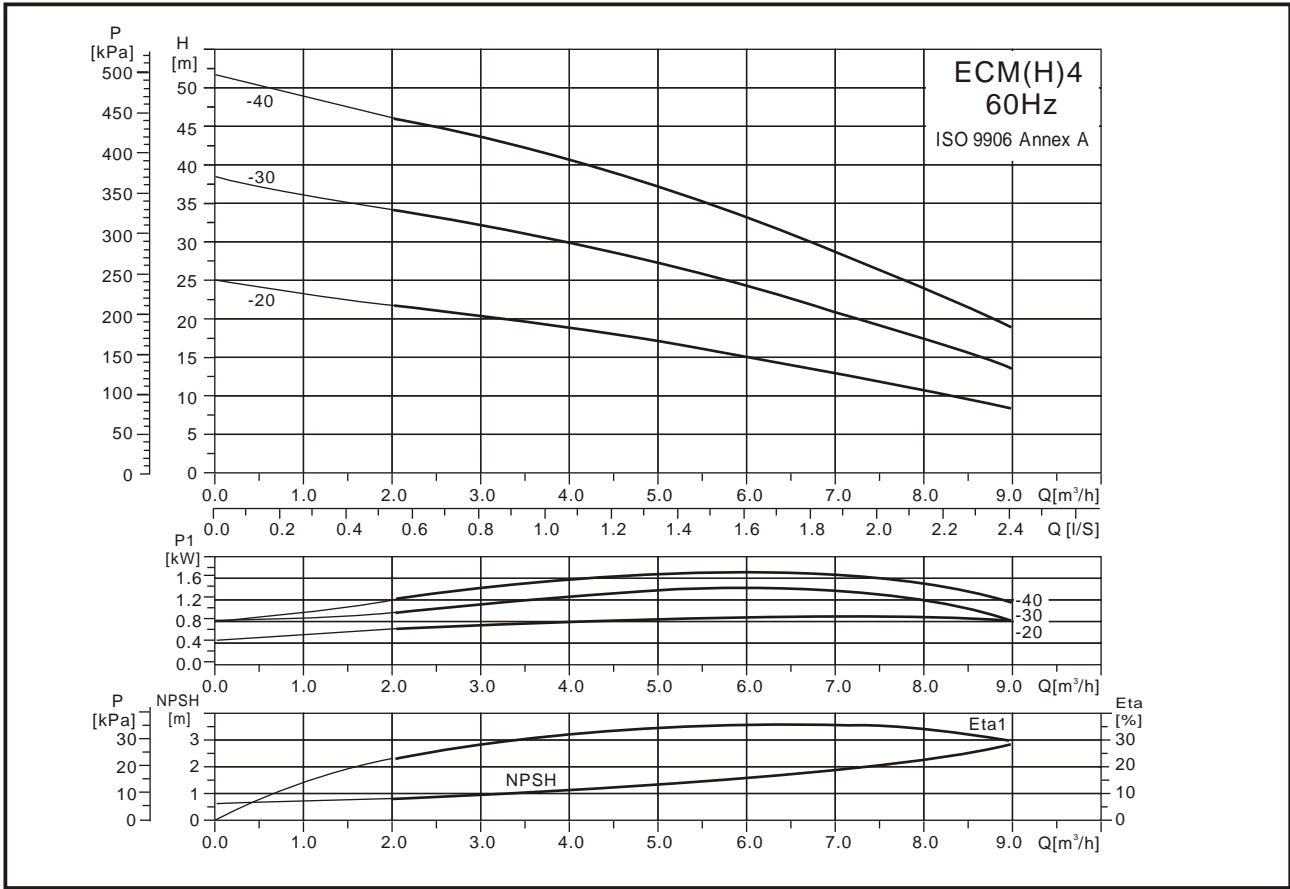
MODEL	Driving motor P1 (kw)			Q (m³/h)	H (m)											
	1X110V	1X220V	3X220/380V		0.4	0.8	1.2	1.6	2.0	2.4	2.8	3.2	3.6	4.0		
ECM(H)2-20	0.68		0.52	H (m)	27	26	25	24	23	22	21	19	15	13		
ECM(H)2-30	0.80		0.67		40	38	37	35	34	33	32	29	23	20		
ECM(H)2-40	0.86		0.86		53	52	50	47.5	45	42	38	35	32	27		
ECM(H)2-50	1.21		1.00		65	63	61	58	55	51	46	42	37	32		
ECM(H)2-60		1.30	1.20		80	78	75	72	67.5	63	57.5	52.5	47.5	42		

Installation sketch



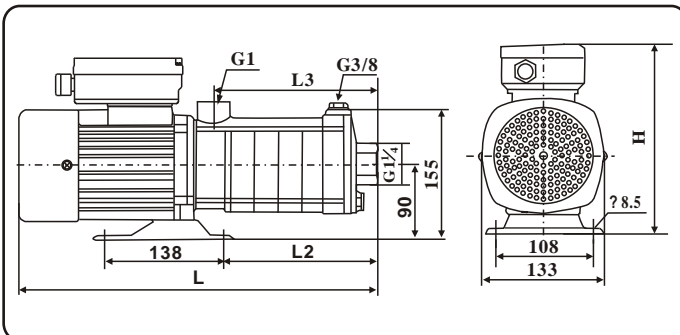
MODEL	Size(mm)												Weight (kg)
	1X110				1X220				3X220/380				
	L	L2	L3	H	L	L2	L3	H	L	L2	L3	H	
ECM(H)2-20	326	90	100	210					326	90	100	190	8.5
ECM(H)2-30	344	108	118	210					344	108	118	190	9.5
ECM(H)2-40	362	126	136	210					362	126	136	190	10.5
ECM(H)2-50	380	144	154	210					380	144	154	190	10.5
ECM(H)2-60					398	162	172	190	398	162	172	190	11

Performance curve:



MODEL	Driving motor P1 (kw)			Q (m³/h)	1.0	2.0	3.0	4.0	5.0	6.0	7.0	8.0	9.0
	1X110V	1X220V	3X220/380V										
ECM(H)4-20	0.98		0.811	H (m)	23	22	20.5	18	16	15	13	11	8
ECM(H)4-30	1.52		1.261		36	33	32	30	27	24	22	17.5	12.5
ECM(H)4-40	1.72		1.526		47.5	46	43	40.5	37.5	32.5	28	23	18

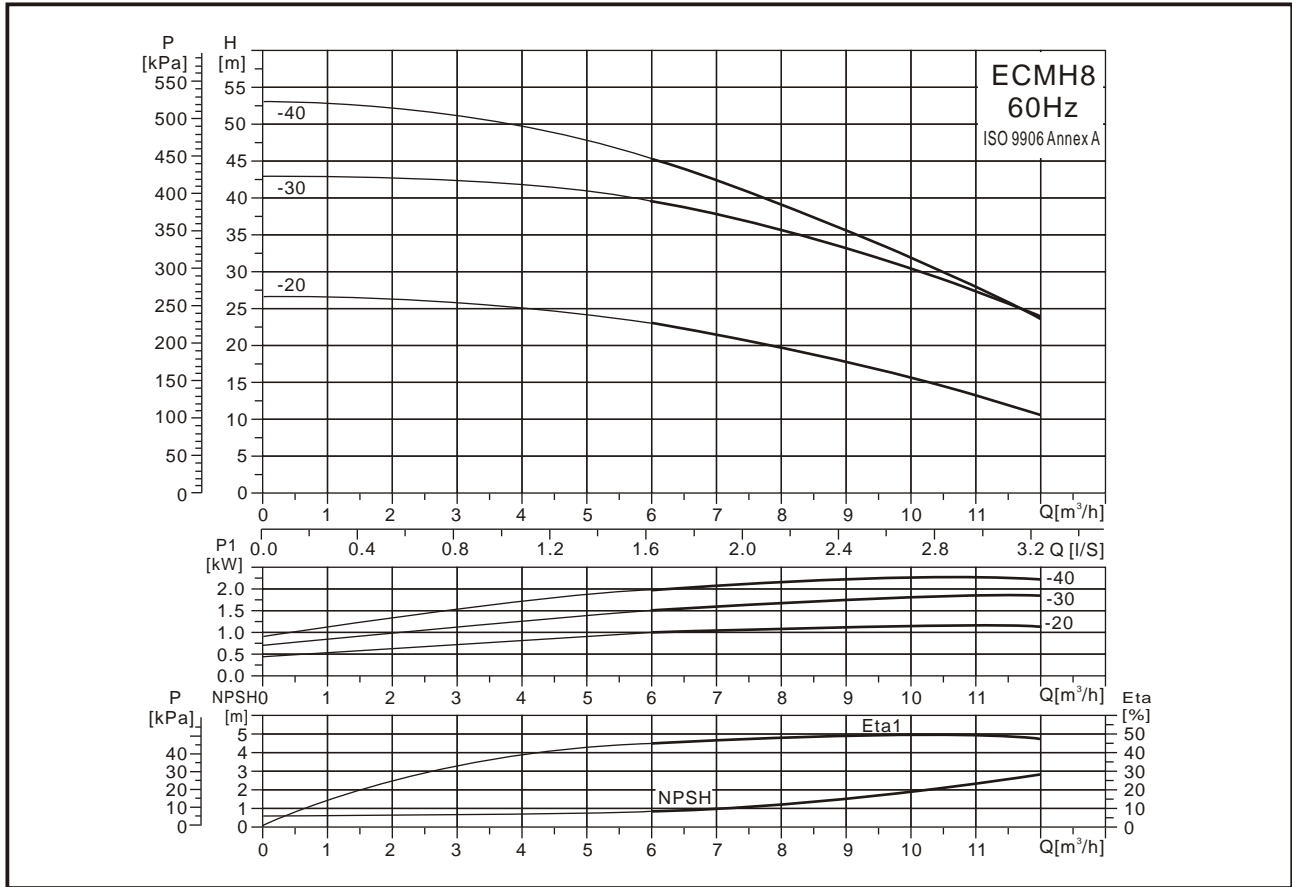
Installation sketch



MODEL	Size(mm)								Weight (kg)
	1X110				3X220/380				
	L	L2	L3	H	L	L2	L3	H	
ECM(H)4-20	335	99	109	210	335	99	109	190	9
ECM(H)4-30	362	126	136	210	362	126	136	190	10
ECM(H)4-40	389	153	163	210	389	153	163	190	10

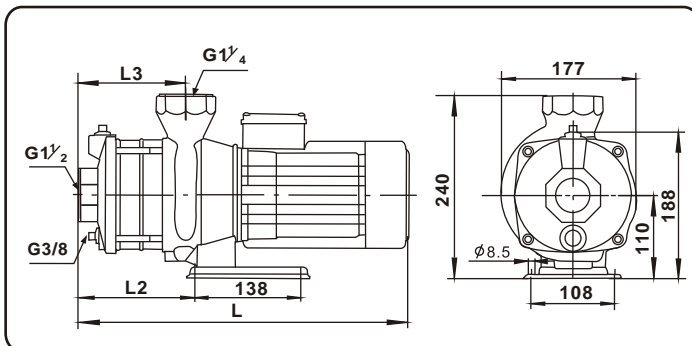


Performance curve:

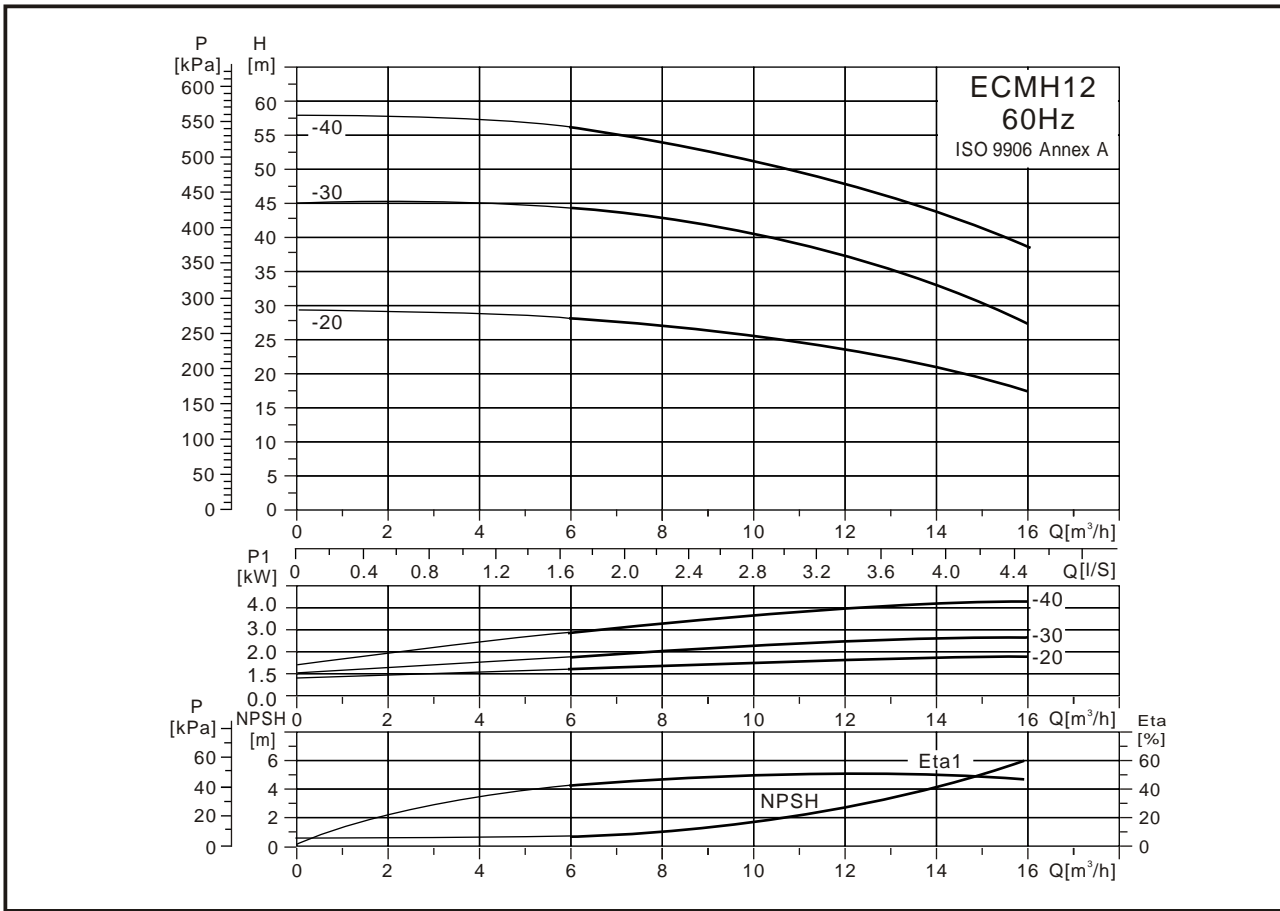


MODEL	(Driving motor) P ₁ (kW)		Q (m ³ /h)	4.0	5.0	6.0	7.0	8.0	9.0	1.0	11
	1X110V	1X220V 3X220/380V									
ECMH8-20	1.17	1.084	H (m)	25	24	23	22	19	17	15	10.5
ECMH8-30	1.90	1.830		41.5	41	39	37.5	35.5	32.5	30	26
ECMH8-40		2.280		49	47.5	45	42.5	37.5	35.5	32	28

Installation sketch

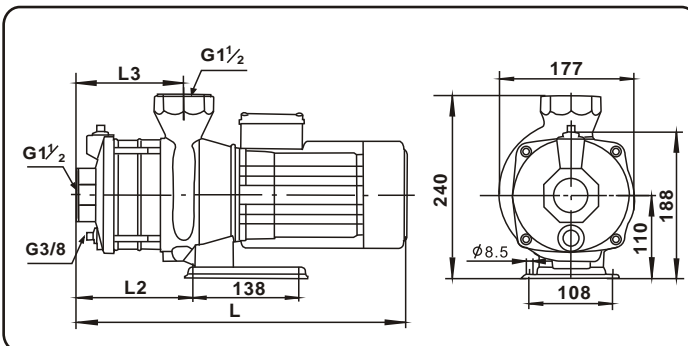


MODEL	Size(mm)						Weight (kg)
	1X220			3X220/380			
	L	L2	L3	L	L2	L3	
ECMH8-20	325	69	70	325	69	70	18
ECMH8-30	410	99	107	410	99	107	20
ECMH8-40				410	99	107	25



MODEL	(Driving motor) P ₁ (kW)			Q (m ³ /h)	4.0	6.0	8.0	10	12	14	16
	1X110V	1X220V	3X220/380V								
ECMH12-20		1.85	1.77	H (m)	28.5	27.5	27	25.5	23	22	17.5
ECMH12-30			2.68		45	44	42.5	41	37.5	33	27.5
ECMH12-40			3.50		57	56	53	52	47.5	43	38

Installation sketch



MODEL	Size(mm)						Weight (kg)
	1X220			3X220/380			
	L	L2	L3	L	L2	L3	
ECMH12-20	360	90	70	360	90	70	18
ECMH12-30				390	99	107	24
ECMH12-40				450	99	107	27