

RJ-45 Connectors

Low-wear contacting of network and telephone plug connectors

The new **RJ-45 connector** is used for the precise, low-wear contacting of digital network and telephone plug connectors, and can reliably transmit gross data rates of 1 Gbit/s.

They consist of a 8-pole test plug and an optionally available test plug mounting to allow floating assembly. The test plug is connected using a standard RJ-45 plug connector.

Features:

- Precise, low-wear contacting
- Reliable data transmission
- Easy connection using a standard RJ-45 plug connector
- Outstanding life span
- Test plug mounting to allow floating assembly optionally available

Technical information:

- Number of poles:	8
- Gross data rate:	1 Gbit/s
- Max. voltage:	25 VAC / 60 VDC
- Max. current:	1.5 A
- Transfer resistance:	< 20 mΩ
- Op. temperature range:	- 20 °C to + 75 °C
- Connection cycles:	approx. 100,000 (*)

Ordering information:

- PS-RJ45-M-008	Part no.: 55140
RJ-45 connector for contacting network and telephone plug connectors	
- Outer dimensions:	approx. 17 x 53 x 17 mm (W x D x H)

Recommended accessories:

- PSA-F16,5-RJ45	Part no.: 55146
Test plug mounting for RJ-45 connector for contacting single plug connectors	
- Outer dimensions:	approx. 40 x 33 x 17.5 mm (W x D x H)

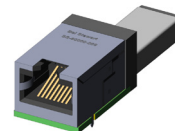
- PSA-F16,5-RJ45-Twin	Part no.: 55148
Test plug mounting for RJ-45 connector for contacting double plug connectors with adjustable grid size	
- Outer dimensions:	approx. 71 x 33 x 17.5 mm (W x D x H)
- Grid size:	adjustable from 16.5 to 28 mm

*: Laboratory conditions

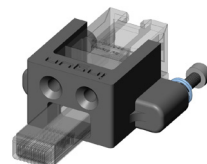
Please contact us for further information. Prices and delivery time on request. Technical changes possible without prior notification.
--



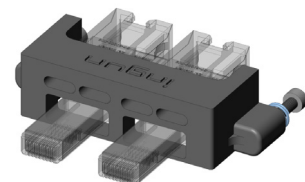
Part no. **55140**
(Front view)



Part no. **55140**
(Rear view)



Part no. **55146**
(Part 55140 not included)



Part no. **55148**
(Part 55140 not included)

Further innovative products can be found on our homepage and in our catalogue. Don't miss our manual test fixture series MA xxx and MA xxxx.

