

1P

Arktite® Heavy Duty Circuit Breaking Receptacle Assemblies and Housings

60 A, 600 VAC/250 VDC, 50**-400 hertz

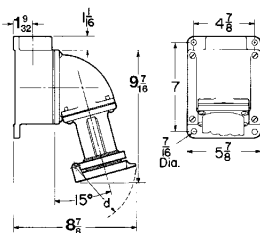
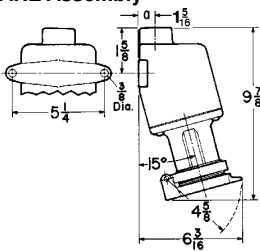
NEMA 4 Watertight



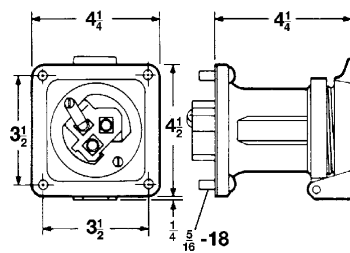
Style 1	With AJ Back Boxes and Angle Adapters			with ARE Back Boxes	Receptacle Housing Only		Cable Dia.	Cat. #	Cat. #
	Description	Hub Size	Spring Door Cat. #	Threaded Cap Only Cat. #	Spring Door Cat. #	Spring Door Cat. #			
2-wire, 2-pole	1	AREA6213		ARE6213	AR621	AR627	0.50 to 1.45	APJ6275	APR6255
	1¼	AREA6214		ARE6214					
3-wire, 3-pole	1	AREA6313		ARE6313	AR631	AR637	0.50 to 1.45	APJ6375	APR6355
	1¼	AREA6314		ARE6314					
4-wire, 4-pole	1¼	AREA6414		ARE6414	AR641		0.50 to 1.45	APJ6475	APR6455
	1½	AREA6415		ARE6415					
5-wire, 5-pole	1¼		AREA6574			AR657	0.50 to 1.45	APJ6575	
	1½		AREA6575						
Style 2									
2-wire, 3-pole	1	AREA6323		ARE6323	AR632	AR638	0.50 to 1.45	APJ6385	APR6365
	1¼	AREA6324		ARE6324					
3-wire, 4-pole	1¼	AREA6424		ARE6424	AR642	AR648	0.50 to 1.45	APJ6485	APR6465
	1½	AREA6425		ARE6425					
4-wire, 5-pole	1¼		AREA6584			AR658	0.75 to 1.45	APJ6585	APR6585
	1½		AREA6585						

Dimensions

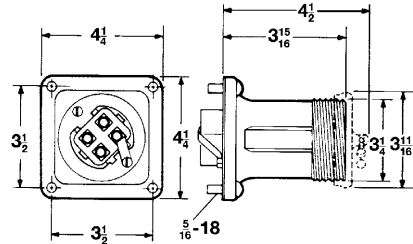
ARE Assembly



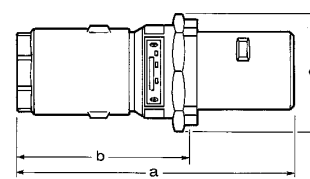
AR Receptacle - Spring Door



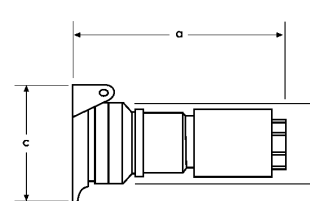
AR Receptacle - Open and with cap



APJ Plug



APR Connector



Config	Plug			Connector		
	a	b	c	a	b	c
2P or 3P	8½	5¾	3⅝	6½	3⅝	2⅟16
4P	8½	5⅓16	3¾	8¼	3⅝	2⅟16
5P	9	6⅓16	47/16	8¼	3⅝	3¼

** For use on systems less than 60 hertz the receptacles, plugs and connectors are for disconnect use only.