

Call today. For U.S. and Canadian product information, call **1-877-362-6567**. To speak to a U.S. Sales Representative, call **1-800-ASK-XEROX** or visit us at www.xerox.com/office

XEROX®

Technology | Document Management | Consulting Services

color laser printers



CONFIGURATIONS	Phaser 6300N	Phaser 6300DN	Phaser 6350DP	Phaser 6350DT	Phaser 6350DX
Speed (Color / Black-and-white)	26 ppm / 36 ppm		36 ppm / 36 ppm		
Duty Cycle	Up to 100,000 pages / month		Up to 120,000 pages / month		
Paper Handling	Tray 1 (MPT): 150 sheets, Tray 2: 550 sheets (Total 700 sheets)				
Paper input	Standard		Additional 550-sheet tray (Total 1,250 sheets)	1,100-sheet high-capacity feeder (Total 1,800 sheets)	
Automatic 2-sided printing	NA	Standard	Standard		
Print					
First page out time	< 12 seconds (color)		< 10 seconds (color)		
Maximum Resolution	2400 dpi				
Processor	800 MHz PowerPC				
Language Support	PostScript® 3™, PCL 5c				
Connectivity	USB 2.0, 10/100BaseT Ethernet				
Memory (Std / Max)	256 MB / 1 GB		256 MB / 1 GB	512 MB / 1 GB	
Internal hard drive	Optional		Optional	Standard	
Print features	Embedded Web Server, Remote Printing, Email Alerts, Enhanced PrintingScout®, PhaserSMART®, RAM Collation, Job Accounting, Usage analysis Tool, Booklet Printing, Smart Trays, Banner-size Printing				Proof / Secure / Saved / Personal Print, PDF-Direct Print, Disk Collation, Extended Font Storage
Warranty	One Year On-Site, Xerox Total Satisfaction Guarantee				

SPECIFICATIONS

Network/Software

Printer management Xerox® CentreWare® Printer Management, CentreWare IS Embedded Web Server, CentreWare Web Administrator, Xerox NDPS Gateway, Usage Analysis Tool

Font capabilities 139 Resident PS fonts and 81 PCL fonts

Printer drivers Windows® 98SE/Me, Windows NT 4.0 (SP6), Windows 2000/XP, Windows Server 2003, MacOS 9.1, MacOS X version 10.2 or higher, Novell Netware 5.x/6.5, Linux Red Hat 9, Suse 9, Fedora Core 1, UNIX Sun Solaris 2.8, 2.9, 2.10, HP/UX 11.x, IBM AIX 4.3.3, Xerox Walk-Up Printing Drivers with Windows 2000 or higher

Language Support True Adobe® PostScript® 3™, PCL 5c

Paper Handling

Maximum input capacity: 2,350 sheets

Tray 1 (MPT): standard: 150 sheet capacity. 17 – 40 lb. Bond, 50 – 80 lb. Cover (65 – 216 gsm) supports a wide range of papers, envelopes, labels, transparencies, cardstocks, and business cards. Media sizes: Executive, Statement, US Folio, A/Letter, Legal, A4, A5, B5 JIS, Custom sizes: width: 3.5 – 8.5 in. (90 – 220 mm); height: 5.5 – 35.4 in. (140 – 900 mm)

Tray 2: standard: 550-sheet capacity. 17 – 40 lb. Bond, 50 – 60 lb. Cover (65 – 163 gsm) supports a wide range of papers, labels and transparencies. Media sizes: Executive, Letter, Legal, A4, A5, B5 JIS, US Folio

Tray 3: standard on 6350DT: Capacity, media types and sizes same as Tray 2

Trays 4 – 5: standard on 6350DX: 1100-sheet High-Capacity Feeder. Media types and sizes same as Tray 2

Automatic 2-sided printing: 17 – 40 lb. (65 – 163 gsm) from all trays

Maximum output capacity: 250 sheets

Special Features

Enhanced PrintingScout® Instantly displays pop-up Help if attention is needed throughout print job

Phaser Installer Automatically gets you printing in minutes. Supports scriptable install and silent install which allows easy driver installation from a centralized, remote location

PhaserSMART® Printer diagnostics and troubleshooting via an automated Internet-based support system

Productivity tools Personal Print*, Driver Color Control, Support Centre, Usage Analysis Tool, Secure Print*, Proof Print*, Saved Print*, Booklet printing, Negative and mirror images, Scaling, Watermarks, Custom size paper, Run black, Cover pages, RAM Collation, Disk Collation*, Remote printing, Separation pages, N-Up printing, PDF-direct printing*, Configuration card, Silent install, Scriptable install, Saved job repository, Email alerts, Job completion notification

*Requires hard drive

Color Controls

Color standards PANTONE®-approved solid-color simulations, Adobe® PostScript® device-independent color, CIE international color standards, and support for ICC and Apple® ColorSync® color management systems

Selectable print quality modes Standard (default): 1200 x 600 dpi; Enhanced: 2400 x 600 dpi; Photo: 1200 x 1200 dpi

Color correction modes Automatic, sRGB, Display, sRGB Vivid, None, SWOP Press, Euroscale Press, Commercial Press, SNAP Press, Black and White

Operating

Dimensions Phaser 6300N / 6300DN / 6350DP: Width: 17.2 in. (429 mm), Height: 18.3 in. (467 mm), Depth: 23.2 in. (580 mm), Weight: 77 lbs. (35 kg.), Phaser 6350DT: Width: 17.2 in. (429 mm), Height: 23.2 in. (580 mm), Depth: 23.2 in. (580 mm), Weight: 91.3 lbs. (41.4 kg.), Phaser 6350DX: Width: 17.2 in. (429 mm), Height: 31.4 in. (798 mm), Depth: 23.2 in. (580 mm), Weight: 122.6 lbs. (55.6 kg.)

Environment Temperature: Storage: 32° to 95° F (0° to 35° C), Operating: 41° to 90° F (5° to 32° C), Relative Humidity: Storage: 15% to 85% RH, Operating: 15% to 85% RH, Noise Level: Printing: 6.95 B (55 dBA), Standby: 5.3 B (35 dBA)

SUPPLIES AND OPTIONS

Consumables	
Phaser 6300/6350 Standard-Capacity Toner Cartridges	
Cyan (up to 4,000 pages)	106R01073
Magenta (up to 4,000 pages)	106R01074
Yellow (up to 4,000 pages)	106R01075
Black (up to 4,000 pages)	106R01076
Phaser 6300 High-Capacity Toner Cartridges	
Cyan (up to 7,000 pages)	106R01082
Magenta (up to 7,000 pages)	106R01083
Yellow (up to 7,000 pages)	106R01084
Black (up to 7,000 pages)	106R01085
Phaser 6350 High-Capacity Toner Cartridges	
Cyan (up to 10,000 pages)	106R01144
Magenta (up to 10,000 pages)	106R01145
Yellow (up to 10,000 pages)	106R01146
Black (up to 10,000 pages)	106R01147
capacities are approximate, based on 5% coverage on an A-size page	
Routine Maintenance Items	
Imaging Unit (up to 35,000 pages)	108R00645
Transfer Roller (up to 35,000 pages)	108R00646
110 Volt Fuser (up to 100,000 pages)	115R00035
220 Volt Fuser (up to 100,000 pages)	115R00036
capacities are approximate, based on 5% coverage on an A-size page	
Options	
Productivity Kit (Includes Personal Print, Secure Print, Proof Print, Disk Collation and Extended Font Storage with hard drive)	097S03374
256 MB Memory DIMM	097S03381
512 MB Memory DIMM	097S03382
550-sheet Feeder Tray	097S03378
1100-sheet High-Capacity Feeder	097S03379
Economy Pack, Standard Media	097S03375

OUTSTANDING MEDIA CAPABILITY

Take full advantage of the new **Phaser 6300/6350** color printers with Xerox's comprehensive selection of papers, transparencies, labels and specialty stock. For a current listing of all recommended printing media, visit http://www.xerox.com/office/6300_6350supplies

Consumables for the Phaser 6300 and Phaser 6350 are part of the Xerox Green World Alliance Supplies Recycling Program. For more information, please visit the Green World Alliance website at www.xerox.com/gwa

Electrical Model: 110-127 VAC, 50/60 Hz, Model: 220-240 VAC, 50/60 Hz, Consumption: Printing: 580 Watts, Standby: 120 Watts, Power Saver: 45 Watts, ENERGY STAR® qualified printer

Regulatory FCC Part 15, Subpart B, Listed to UL 60950 CSA-22.2 60950-00, CE Mark applicable to directives 73/23/EEC and 89/336/EEC EN 55022

Total Satisfaction Services

1-year On-site Warranty, online web technical support and telephone support. Innovative service offerings include optional extended Service Agreements and custom training for your internal Help Desk. The Phaser 6300 / 6350 printers are backed by the Xerox Total Satisfaction Guarantee.

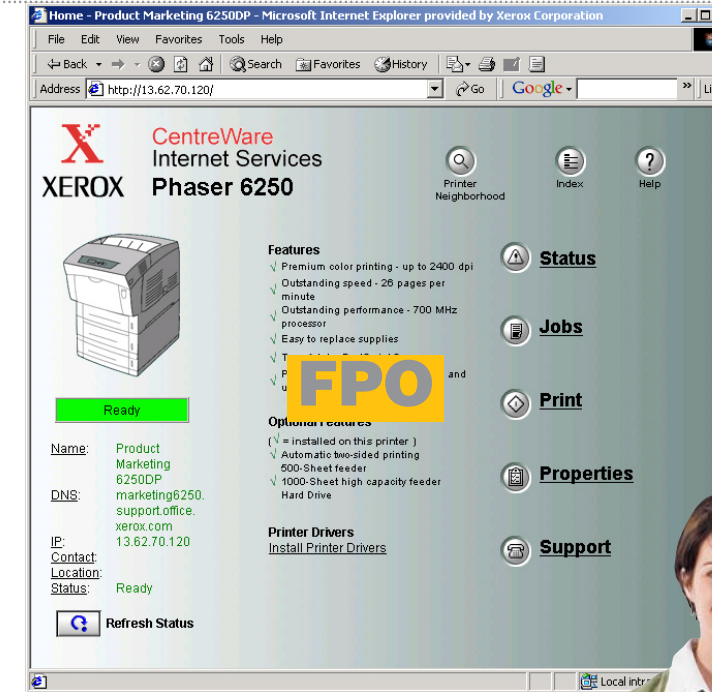
The print cartridges are part of the Xerox Green World Alliance Supplies Recycling Program. For more information, please visit the Green World Alliance web site at www.xerox.com/GWA

Satisfy your need for Speed



Phaser® 6300 / 6350

Color Laser Printers



Blazing-fast speed.

Sharp, accurate color. And enhanced productivity features that will put your business ahead of the competition.

From really fast to really, really fast

Real speed is measured in performance, and these printers deliver. Choose how much speed you need — up to an incredible 36 ppm in color. The Xerox Phaser 6300 / 6350 printers offer outstanding printing performance, with powerful features to keep users in the fast lane.

- Finish projects with time to spare. With color speeds of 26 or 36 ppm, you can output business-quality color prints up to 63% faster than our leading competitors.
- Zip through the toughest jobs. An 800 MHz Power PC processor keeps even your largest projects moving faster than anything else in the category.
- Forget about waiting. First-page-out time is less than 10 seconds with the Phaser 6350, less than 12 seconds with the Phaser 6300.
- Change gears as needed. Selectable print modes give you time- and money-saving options for general office uses, plus premium, high-resolution color on demand.

Speed made simple

Using the Phaser 6300 / 6350 printers is incredibly easy thanks to advanced, user-friendly tools specifically designed to enhance productivity and make it easier for workgroups to keep up with the speed of today's business

- Save time. Our Smart Tray feature provides real-time printer and paper tray status at the user's desktop — showing available media types and sizes — and automatically selects the correct tray.
- Reduce downtime. The Phaser 6300 / 6350 printers not only send email alerts when consumables like toner run low, they also provide illustrated loading instructions.
- Eliminate delays. PrintingScout® constantly monitors all print jobs, and uses pop-up windows to inform users right away of any trouble. Pop-up windows include illustrated instructions on how to fix the problem easily.
- Manage remotely. The CentreWare® IS embedded web server allows you to manage, configure and troubleshoot your Phaser printer from any location on the network using a web browser.

Power to share

No more worries about heavy printing volume or complex print jobs slowing down your workgroup. From small teams to large departments, the Phaser 6300 / 6350 printers are designed with powerful tools to meet any demand for fast, high-resolution color.

- Keep moving. With paper input capacity of 2,350 sheets and a duty cycle up to 120,000 pages per month, you can meet even the largest department's needs.
- Keep growing. Built-in networking capability enables easy user access to any connected printer.
- Track group use. The Usage Analysis Tool makes it easy to collect, organize and analyze data — even for large workgroups using multiple Phaser printers.
- Stay organized. The Personal Print feature separates and stores jobs, keeping outputs from intermixing and enabling each user to print all their processed jobs at one time.
- Reduce page cost. For larger workgroups, optional high-capacity toner cartridges provide the best cost-per-page value.



Phaser® 6300 Phaser® 6350



High-performance color

Yes, they're fast. But with premium image quality and deep, defined color print after print, the Phaser 6300 / 6350 printers also meet your most demanding business color requirements:

Brilliance 2400 dpi provides richly detailed color that makes your images jump right off the page.

Accuracy True Adobe® PostScript® 3™ and improved controls deliver accurate color, right out of the box. New color controls also allow users to make precise adjustments for custom applications.

Consistency A single-pass print system with automatic adjustments provide consistent performance throughout long print runs.

Flexible paper handling

- 1 Use Tray 1 (MPT) for heavy paper up to 80 lb. cover (216 gsm), envelopes, labels, business cards and other specialty projects (up to 150 sheets).
- 2 Tray 2: 550-sheet paper tray (standard) feeds 17–40 lb. bond, 50–60 lb. cover (65–163 gsm) paper and transparencies.
- 3 An additional 550-sheet paper feeder is available (standard on the 6350DT configuration).
- 4 A high-capacity feeder (standard on our most productive configuration, 6350DX) adds two trays with 1,100 sheets of input capacity.

Money-saving and fast automatic duplex option for two-sided printing (standard on 6300DN, 6350DP, 6350DT, 6350DX configurations).