

# Diamante ULTRA

20~23 SEER Ultra High Efficiency

Heat Pump + DC Inverter in One System

Single Zone (9,000 ~ 24,000 BTU/hr)

110V~120V / 208V~230V, 60Hz, 1Ph

Wi-Fi Access Via Free Smartphone App



**WYT-22**  
WALL MOUNTED  
SINGLE ZONE MINI SPLITS

**INVERTER++**



## STANDARD FEATURES

- Digital Backlit LED Display On Front Panel
- Designed For Standard Wall Hung Installation
- Reverse Cycle / Heat Pump Application
- Latest Design Attractive Acrylic Flat Panel
- Full ABS Plastic Casing for Indoor Units
- Removable Flip Open Style Front Panel Cover
- Washable Return Air Filter Cartridges
- Anti Discoloration Formulated Plastic Dyes
- Low Ambient Condenser Heat Strip for -13F Heating
- LCD Screen Infrared Electronic Control
- Auto-Restart with Memory for Power Outages
- Timer for Preset Starting and Stopping
- Auto Changeover, Dry and Fan Only Modes
- Season Sensitive Operational Logic
- Self Learning Time-Demand Defrost Logic
- Automatic Synchronized Discharge Louver
- Three + Auto Speed Digital EC-DC Blower Motor
- Digital Motor Speed Control System
- Whisper Quiet Indoor Motor with Ball Bearings
- High Air Flow Volume for Quick Performance
- Ultra High Efficiency Grooved Copper Tubes

- Enhanced Louvered Hydrophilic Aluminum Fins
- Superior Efficiency Rating Under Variety of Conditions
- Dynamically Balanced Ultra Quiet Cross-Flow Blower
- Anti Mildew Treatment on Blower Wheels
- Internal Noise and Vibration Isolation
- High Output & Quiet Variable Speed Compressors
- Very Low Starting Current
- Large Capacity Suction Accumulators
- Ultra Galvanized Sheet Metal Parts
- Heavy Coat of Baked Enamel Paint for the Outdoor Unit
- Durable Outdoor Fan with High Glass Content
- Efficient, Permanently Lubricated EC-DC Outdoor Motor
- Internal Overload Protection for Motors
- Flare Type Refrigerant Connections
- Full Operating Charge of Refrigerant (R410A)
- Standardized Cabinet Design for all Models
- Piping and Wiring Through Bottom, Sides or Rear of Unit
- Highest Grade Components for Long Life Expectancy
- Ample Availability of Spare Parts and Accessories
- Wi-Fi Access Via Free Smartphone App Included
- Built to Withstand Extreme Ambient Climates

## ACCESSORIES & OPTIONS



UVC Bacterial Disinfection Kit



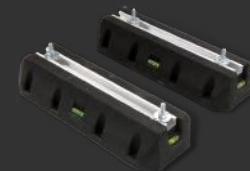
Line Cover Kit



Line Set Flushing Kit



Mounting Brackets



Mounting Base



Surge Protection



Condensate Pump

System Set Model Number			WYT009ALF122RL	WYT012ALF122RL	WYT009GLF122RL	WYT012GLF122RL	WYT018GLF122RL	WYT024GLF122RL	
Indoor Unit Model Number			WT009ALF122HLD	WT012ALF122HLD	WT009GLF122HLD	WT012GLF122HLD	WT018GLF122HLD	WT024GLF122HLD	
Indoor Unit Code			Z2U20102006527	Z2U20102006525	Z2U20102006451	Z2U20102006427	Z2U20102006499	Z2U20102006421	
Outdoor Unit Model Number			YN009ALF122RPD	YN012ALF122RPD	YN009GLF122RPD	YN012GLF122RPD	YN018GLF122RPD	YN024GLF122RPD	
Outdoor Unit Code			Z2U20103006472	Z2U20103006469	Z2U20103006395	Z2U20103006375	Z2U20103006444	Z2U20103006369	
Power supply			V, Ph, Hz	115V,1Ph,60Hz	115V,1Ph,60Hz	208/230V,1Ph,60Hz	208/230V,1Ph,60Hz	208/230V,1Ph,60Hz	
Cooling Performance	Rated Capacity (Min ~ Max Range)	BTU / h	9,000	12,000	9,000	12,000	18,000	23,000	
	Rated Power Input	W	710	920	710	920	1,350	1,920	
	Rated Current	A	6.4	8.3	3.2	4.1	6.1	8.6	
	EER / EER2	BTU / W	12.5 / 12.5	12.5 / 12.5	13 / 13	13 / 13	13 / 13	12.5 / 12.5	
	SEER / SEER2	BTU / W	22 / 23	22 / 22	23 / 23.5	23 / 23	21.5 / 22	20 / 20	
Heating Performance	Rated Capacity (Min ~ Max Range)	BTU / h	9,500	12,000	9,500	12,000	18,000	24,000	
	Rated Power Input	W	910	910	730	910	1,310	2,050	
	Rated Current	A	6.5	8.2	3.3	4.1	5.9	9.2	
	COP	W / W	3.5	3.5	3.5	3.5	3.5	3.2	
	HSPF / HSPF2	BTU / W	10 / 9	10 / 9	10 / 9.2	10 / 9.5	10 / 8.8	10 / 8.8	
	Low Heating Capacity (@19F)	BTU / h	8,000	10,000	8,000	10,000	14,000	18,000	
MINIMUM CIRCUIT AMPACITY (Full Set)			A	16	17	9	11	13	19
MAX.FUSE (Full Set)			A	25	25	15	15	20	30
Indoor Fan Motor	Model		BLDC	BLDC	BLDC	BLDC	BLDC	BLDC	
	Brand		Weilling	Weilling	Weilling	Weilling	Broad-Ocean	Broad-Ocean	
	Speed (Hi / Md / Lo / Min)	RPM	1,250 / 1,050 / 850 / 750	1,250 / 1,050 / 850 / 750	1,250 / 1,050 / 850 / 750	1,250 / 1,050 / 850 / 750	1,130 / 990 / 850 / 750	1,130 / 990 / 850 / 750	
Indoor Air Flow (Hi / Md / Lo)			m3 / h	650 / 550 / 450	800 / 650 / 500	650 / 550 / 450	800 / 650 / 500	1,250 / 1,050 / 900	1,250 / 1,050 / 900
Indoor Air Flow (Hi / Md / Lo)			CFM	382 / 324 / 265	471 / 382 / 294	382 / 324 / 265	471 / 382 / 294	735 / 618 / 529	735 / 618 / 529
Indoor Noise Level (Hi / Md / Lo / MUTE)			dB(A)	39 / 34 / 29 / 27	39 / 34 / 29 / 27	39 / 34 / 29 / 27	39 / 34 / 29 / 27	45 / 40 / 35 / 31	45 / 40 / 35 / 31
Indoor Unit	Net Dimensions (W*D*H)	mm	820 x 195 x 306	920 x 195 x 306	820 x 195 x 306	920 x 195 x 306	1,100 x 222 x 333	1,100 x 222 x 333	
	Net Dimensions (W*D*H)	Inches	32"-1/4 x 7"-5/8 x 12"	36"-1/4 x 7"-5/8 x 12"	32"-1/4 x 7"-5/8 x 12"	36"-1/4 x 7"-5/8 x 12"	43"-3/8 x 8"-3/4 x 13"-1/8	43"-3/8 x 8"-3/4 x 13"-1/8	
	Packing Dimensions (W*D*H)	mm	890 x 265 x 380	990 x 265 x 380	890 x 265 x 380	990 x 265 x 380	1,165 x 295 x 405	1,165 x 295 x 405	
	Packing Dimensions (W*D*H)	Inches	35" x 10"-3/8 x 15"	39" x 10"-3/8 x 15"	35" x 10"-3/8 x 15"	39" x 10"-3/8 x 15"	45"-7/8 x 11"-5/8 x 16"	45"-7/8 x 11"-5/8 x 16"	
	Net / Gross Weight	Kg	9.0 / 11.0	10.5 / 12.0	9.0 / 11.0	10.5 / 12.0	14.0 / 16.0	14.0 / 16.0	
	Net / Gross Weight	Lbs	19.8 / 24.3	23.1 / 26.5	19.8 / 24.3	23.1 / 26.5	30.9 / 35.3	30.9 / 35.3	
Outdoor Fan Motor	Model		ZKFN-34-10-1	ZKFN-34-10-1	ZKFN-34-10-1	ZKFN-34-10-1	ZKFN-80-8-3	ZKFN-120-8-2	
	Brand		Weilling	Weilling	Weilling	Weilling	Broad-Ocean	Broad-Ocean	
	Speed (Hi / Md / Lo / Min)	RPM	950 / 850 / 750 / 710	950 / 850 / 750 / 630	950 / 950 / 850 / 750	910 / 830 / 710 / 630	910 / 790 / 690 / 550	870 / 750 / 630 / 510	
Outdoor Air Flow (H)			m3 / h	2,100	2,100	2,100	2,100	3,300	4,500
Outdoor Air Flow (H)			CFM	1,235	1,235	1,235	1,235	1,940	2,645
Outdoor Noise Level (H)			dB(A)	50.0	52.0	52.0	52.0	52.0	58.0
Compressor	Model		KSK89D35UEZE3	KSK103D33UEZC3	KSK89D35UEZE3	KSK103D33UEZC3	KSN140D33UFZ3	C-6R2210H1EBF	
	Type		ROTARY	ROTARY	ROTARY	ROTARY	ROTARY	Twin-ROTARY	
	Brand		GMCC	GMCC	GMCC	GMCC	GMCC	SANYO	
	Rated Current (RLA)	A	11.8A	12.7A	6.1A	7.8A	9.4A	13.5A	
Refrigerant Oil / Oil Amount			Ozs	ESTER OIL VG74, 8.0 Ozs	ESTER OIL VG74, 9.5 Ozs	ESTER OIL VG74, 8.0 Ozs	ESTER OIL VG74, 14.2 Ozs	ESTER OIL VG74, 20.0 Ozs	
Outdoor Unit	Net Dimensions (W*D*H)	mm	728 x 305 x 550	728 x 305 x 550	728 x 305 x 550	728 x 305 x 550	845 x 380 x 699	910 x 397 x 805	
	Net Dimensions (W*D*H)	Inches	28"-5/8 x 12" x 21"-5/8	28"-5/8 x 12" x 21"-5/8	28"-5/8 x 12" x 21"-5/8	28"-5/8 x 12" x 21"-5/8	33"-1/4 x 15" x 27"-1/2	35"-7/8 x 15"-5/8 x 31"-5/8	
	Packing Dimensions (W*D*H)	mm	852 x 358 x 610	852 x 358 x 610	852 x 358 x 610	852 x 358 x 610	960 x 430 x 750	1,028 x 485 x 850	
	Packing Dimensions (W*D*H)	Inches	33"-1/2 x 14"-1/8 x 24"	33"-1/2 x 14"-1/8 x 24"	33"-1/2 x 14"-1/8 x 24"	33"-1/2 x 14"-1/8 x 24"	37"-3/4 x 17" x 29"-1/2	40"-1/2 x 19"-1/8 x 33"-1/2	
	Net / Gross Weight	Kg	23.5 / 25.5	27.4 / 29.7	23.3 / 25.3	26.8 / 29.2	38.5 / 42.5	47.5 / 54	
	Net / Gross Weight	Lbs	51.8 / 56.2	60.4 / 65.5	51.4 / 55.8	59.1 / 64.4	84.9 / 93.7	104.7 / 119.1	
Refrigerant Type			R410A	R410A	R410A	R410A	R410A	R410A	
Expansion Device Type, Location			Capillary Tube, Outdoor	Capillary Tube, Outdoor	Capillary Tube, Outdoor	Capillary Tube, Outdoor	Capillary Tube, Outdoor	Capillary Tube, Outdoor	
Factory Charged Weight (Optimized for 16' Line Set)			Ozs	27.5	42.3	27.5	42.3	50.4	65.3
Adjustment Charge (Ea. Foot length for <10' or >25')			Ozs/Ft.	0.22 Ozs	0.22 Ozs	0.22 Ozs	0.22 Ozs	0.22 Ozs	0.22 Ozs
Design pressure			PSIG	550	550	550	550	550	550
Refrigerant Piping	Liquid Side/ Gas Side (OD)	Inch	1/4" / 3/8"	1/4" / 3/8"	1/4" / 3/8"	1/4" / 3/8"	1/4" / 1/2"	1/4" / 5/8"	
	Max. Refrigerant Pipe Length	m	15	15	15	15	20	20	
	Max. Refrigerant Pipe Length	Ft.	50	50	50	50	65	65	
	Max. Height Difference	m	10	10	10	10	15	15	
	Max. Height Difference	Ft.	33	33	33	33	50	50	
Condensate Drain Connection Diameter			mm (In)	OD Φ 16mm (5/8")	OD Φ 16mm (5/8")	OD Φ 16mm (5/8")	OD Φ 16mm (5/8")	OD Φ 16mm (5/8")	
Inteconnecting Cable Specks				AWG 16# x 4 (TC-ER)	AWG 16# x 4 (TC-ER)	AWG 16# x 4 (TC-ER)	AWG 16# x 4 (TC-ER)	AWG 16# x 4 (TC-ER)	
Controller Included				LCD Wireless Remote	LCD Wireless Remote	LCD Wireless Remote	LCD Wireless Remote	LCD Wireless Remote	
Temperature Ranges	Indoor Temperature Setting Range	°C / °F	17 ~ 30 / 63 ~ 86	17 ~ 30 / 63 ~ 86	17 ~ 30 / 63 ~ 86	17 ~ 30 / 63 ~ 86	17 ~ 30 / 63 ~ 86	17 ~ 30 / 63 ~ 86	
	Indoor Min Heat (Vacation Mode)	°C / °F	8 / 46	8 / 46	8 / 46	8 / 46	8 / 46	8 / 46	
	Outdoor Ambient Range (Cooling)	°C / °F	-15 ~ +50 / 5 ~ 122	-15 ~ +50 / 5 ~ 122	-15 ~ +50 / 5 ~ 122	-15 ~ +50 / 5 ~ 122	-15 ~ +50 / 5 ~ 122	-15 ~ +50 / 5 ~ 122	
	Outdoor Ambient Range (Heating)	°C / °F	-25 ~ +30 / -13 ~ +86	-25 ~ +30 / -13 ~ +86	-25 ~ +30 / -13 ~ +86	-25 ~ +30 / -13 ~ +86	-25 ~ +30 / -13 ~ +86	-25 ~ +30 / -13 ~ +86	
Recommended Application Area Size (Min-Max) Based on average variables for cooling operation	m2		15~30	20~40	15~30	20~40	30~60	40~80	
	Sq.Ft		160~325	215~430	160~325	215~430	325~650	430~860	