

# Black/Gold Top Locks

## The Price of Gold Has Dropped (again)

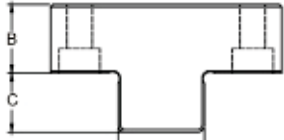
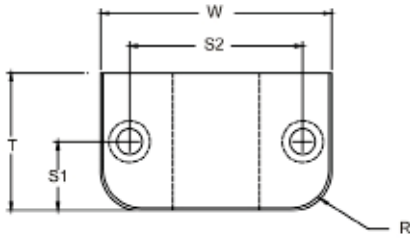


## New lower list pricing!

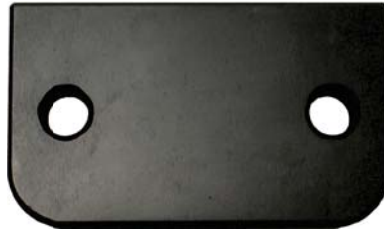
PCS Part Number	Cross Reference	
	Progressive® Components	DME® Company
TL-125P	TL75 x 125	BGT1250*
TL-150P	TL100 x 150	BGT1500*
TL-200P	TL112 x 200	BGT2000*
TL-250P	TL150 x 250	NOT AVAILABLE
TL-300P	TL175 x 300	BGT3000S*

\*For exact dimensions please refer to the DME® part number chart on reverse side of the flyer

\*\*List pricing effective January 15, 2013, subject to change without notice

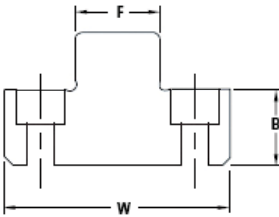
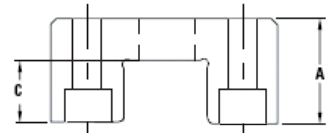
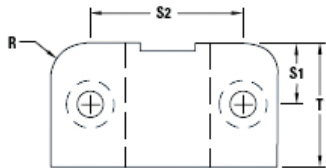


**Male H13**  
Core: 40-44 HRC  
Surface 65 HRC  
Melonite® (SBN)



**Female A2**  
Core: 58-60 HRC  
Surface 80 HRC  
Titanium Nitride Coated (TiN)

Progressive® Part No.	PCS Part No.	T +.000 -.002	W +.0000 -.0004	A +.000 -.002	B +.000 -.002	C +.00 -.01	D +.0001/.0002 Clearance Per Side	S1 ±.01	S2 ±.01	R POCKET RADIUS	SHCS Male	SHCS Female
TL75x125	TL-125P	.750	1.250	.625	.500	.38	.438	.375	.875	.250	#8-32 X 5/8"	#8-32 X 3/4"
TL100x150	TL-150P	1.000	1.500	.875	.375	.50	.500	.500	1.000	.250	#10-32 X 1/2"	#10-32 X 1"
TL112x200	TL-200P	1.125	2.000	.875	.625	.50	.750	.563	1.375	.375	1/4-20 X 3/4"	1/4-20 X 1"
TL150x250	TL-250P	1.500	2.500	1.375	.625	.75	1.000	.750	1.750	.375	1/4-20 X 3/4"	1/4-20 X 1 1/2"
TL175x300	TL-300P	1.750	3.000	1.250	.875	.75	1.125	.875	2.250	.500	#5/16-18 X 1"	#5/16-18 X 1 1/4"



DME® Part No.	W +.0000 -.0004	A +.000 -.002	B +.000 -.002	C ±.01	F .0001/.0002 CLEARANCE PER SIDE	T +.000 -.002	R POCKET RADIUS	S1 ±.01	S2 ±.01	SHCS Male	SHCS Female
BGT1250	1.250	.625	.500	.41	.438	.625	.250	.312	.875	#6-32 X 5/8"	#6-32 X 3/4"
BGT1500	1.500	.875	.750	.53	.500	.875	.250	.437	1.000	#8-32 X 7/8"	#8-32 X 1"
BGT2000	2.000	1.125	.750	.66	.750	1.000	.375	.500	1.375	#10-32 X 1"	#10-32 X 1-1/4"
BGT3000	3.000	1.500	.750	.78	1.125	1.125	.500	.562	2.250	1/4-20 X 1"	1/4-20 X 1-3/4"
BGT3000S	3.000	1.250	.875	.75	1.125	1.750	.500	.875	2.250	5/16-18 X 1-1/8"	5/16-18 X 1-5/8"
BGT3500	3.500	1.750	.750	1.00	1.500	2.000	.500	1.000	2.500	3/8-16 X 1"	3/8-16 X 2"