

Cadence SPB / OrCAD 17.x Post-Installation Checklist

Is the License Manager Service configured?

Go to Start>Programs>Cadence>License Manager, right-click>Run as Administrator on the LMTools shortcut.

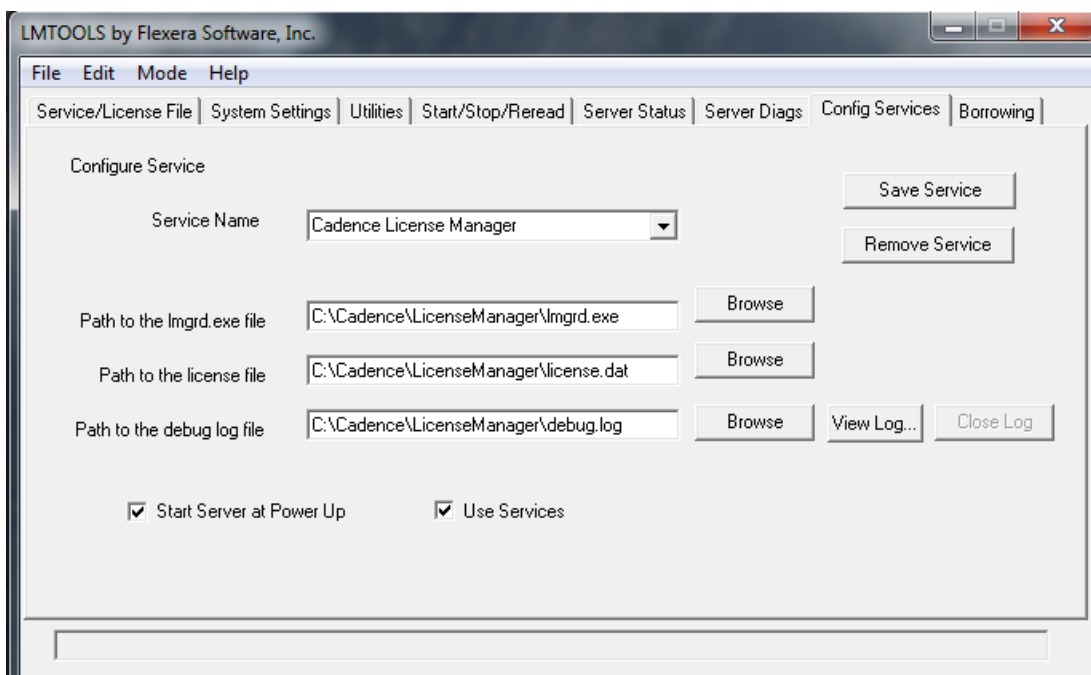
In LMTools, go to the Config Services tab, set the drop-down for Cadence License Manager as the Service Name.

Check the contents of the three edit boxes, the default entries would be C:\Cadence\LicenseManager\lmgrd.exe, C:\Cadence\LicenseManager\license.dat and C:\Cadence\LicenseManager\debug.log.

Set the Check boxes for Start Server at Power Up and Use Services.

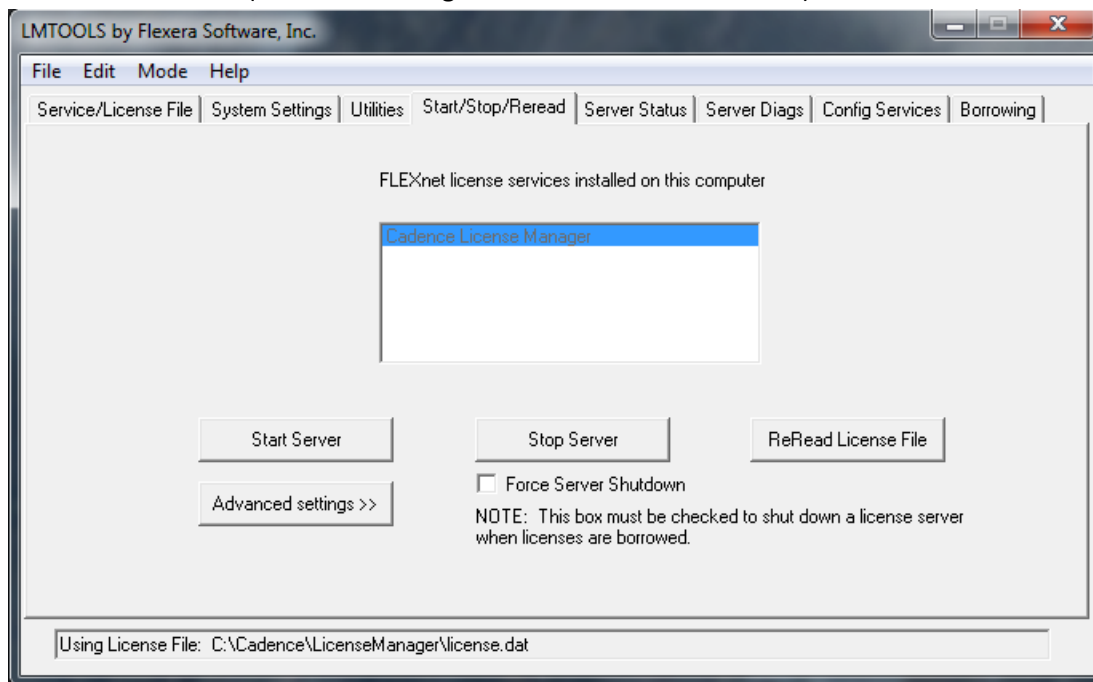
IF you already have an installation of another product that uses FlexLM, the service entries will need to be configured manually.

IF you have made any changes to the License Manager Service Configuration, use the Save Service button to save the changes.



Is the License Manager Service running?

In LMTools, go to the Start / Stop / Reread tab, left-click on the Stop Server button, (The status line will change to “Stopping Server” or “Unable to stop server”) wait a few seconds and left-click on the Start Server button. (Status will change to “Server Start Successful”)



Go to the Config Services tab and use the View Log button to open the log file. The contents will resemble:

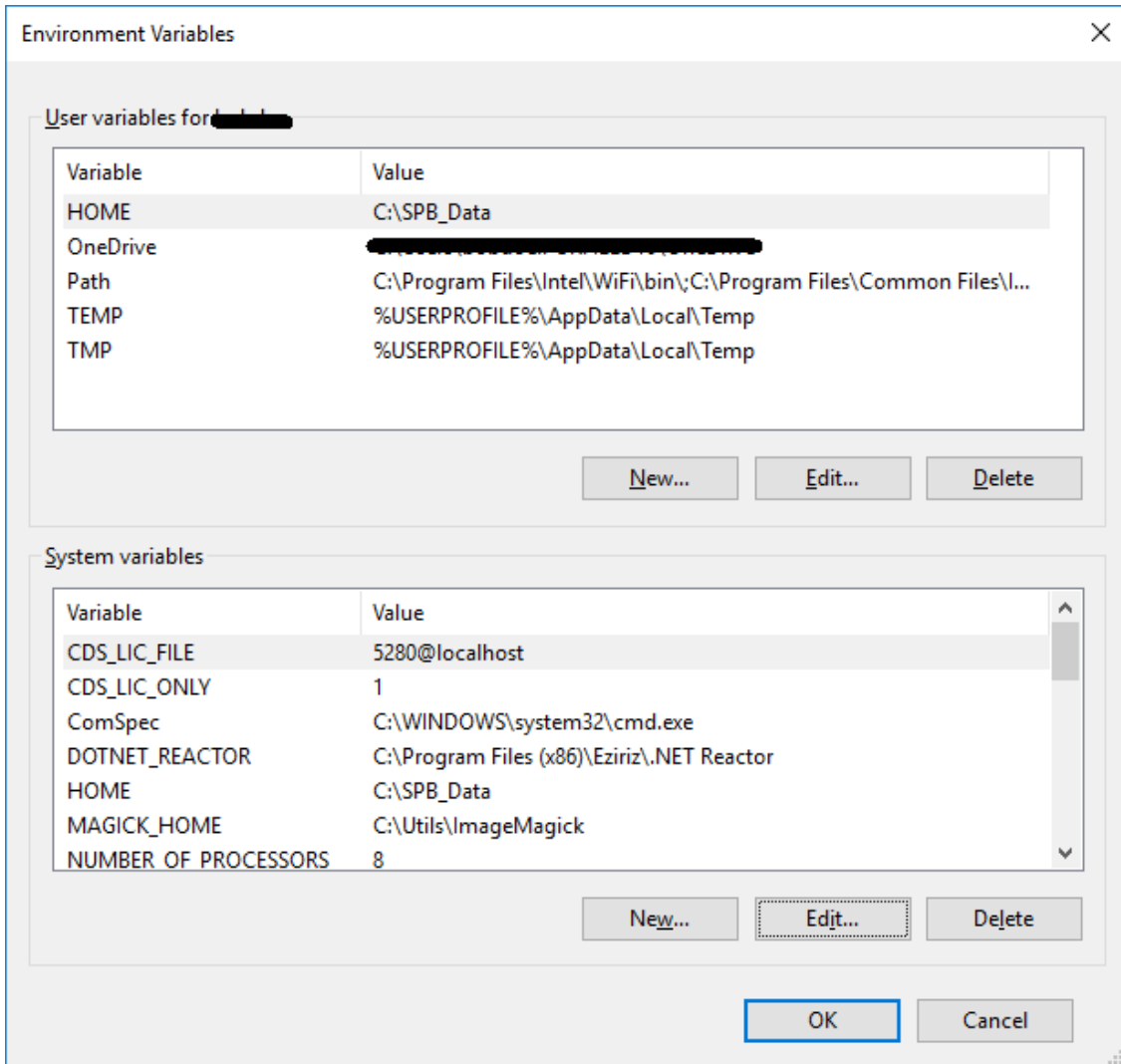
```
<time> (lmgrd) -----
<time> (lmgrd)   Please Note:
<time> (lmgrd)
<time> (lmgrd)   This log is intended for debug purposes only.
....
<time> (lmgrd) Server's System Date and Time: <long date, time and timezone>
<time> (lmgrd) pid <some process id>
....
<time> (lmgrd) Done rereading
<time> (lmgrd) FlexNet Licensing (v11.13.1.3 build 176543 x64_n6) started on
<servername> (IBM PC) (<date>)
<time> (lmgrd) Copyright (c) 1988-2015 Flexera Software LLC. All Rights Reserved.
<time> (lmgrd) World Wide Web: http://www.flexerasoftware.com
<time> (lmgrd) License file(s): C:\Cadence\LicenseManager\license.dat
<time> (lmgrd) lmgrd tcp-port 5280
<time> (lmgrd) (@lmgrd-SLOG@) =====
....
<time> (lmgrd) (@lmgrd-SLOG@) License file(s) used:
C:\Cadence\LicenseManager\license.dat
<time> (lmgrd) (@lmgrd-SLOG@) =====
....
<time> (lmgrd) Starting vendor daemons ...
<time> (lmgrd) Starting vendor daemon at port 3000
<time> (lmgrd) Using vendor daemon port 3000 specified in license file
<time> (lmgrd) Started cdslmd (pid <another process id>)
<time> (cdslmd) FlexNet Licensing version v11.13.1.3 build 176543 x64_n6
....
<time> (cdslmd) Server started on <servername> for: <license features>
....
<time> (cdslmd) All FEATURE lines for cdslmd behave like INCREMENT lines
<time> (cdslmd)
<time> (cdslmd) EXTERNAL FILTERS are OFF
```

```
<time> (lmgrd) cdslmd using TCP-port 3000
....
```

Check that the Time for the entries is current, you may need to use the View Log and Close Log buttons a couple of times to get the log file contents updated.

Is the license source correctly configured?

Go to the Computer link, Start>Computer, right-click>Properties, Advanced System Settings, Environment Variables button.



The Upper Window is for User Variables, the Lower Window is for System Variables. There are two Environment Variable entries of interest, CDS_LIC_FILE and CDS_LIC_ONLY. They will either exist in the User, or System, Variables window, they should not exist in both the User and System Environment Variables windows. The Value of the CDS_LIC_ONLY variable should be 1 (number one) and the Value of the CDS_LIC_FILE variable should be 5280@<name of machine> (<name of machine> would be the name of the machine running the License Manager, the computer name, or "localhost").