

Since 1921

## INDUSTRIAL SINGLE SWING GATES

\* Includes Hinges And Latch Up To 4" - Specify Size

* Opening	Frame	Part #	Overall Height ( For "3" Strand Barb Top Go To Next Height )				
			5' H	6' H	7' H	8' H	9' H
<b>3'</b>	<b>1-5/8" Str.</b>	Price					
		Part #	27-00305	27-00306	27-00307	27-00308	27-00309
		Weight	42	52	58	63	68
	<b>1-5/8" Std.</b>	Price					
		Part #	27-00305	27-00306	27-00307	27-00308	27-00309
		Weight	55	68	74	82	90
	<b>1-7/8" Str.</b>	Price					
		Part #	32-00305	32-00306	32-00307	32-00308	32-00309
Weight		66	72	81	87	93	
<b>1-7/8" Std.</b>	Price						
	Part #	32-00305	32-00306	32-00307	32-00308	32-00309	
	Weight	71	77	83	94	107	
<b>3-1/2'</b>	<b>1-5/8" Str.</b>	Price					
		Part #	27-00425	27-00426	27-00427	27-00428	27-00429
		Weight	45	55	61	66	71
	<b>1-5/8" Std.</b>	Price					
		Part #	27-00425	27-00426	27-00427	27-00428	27-00429
		Weight	58	71	79	84	89
	<b>1-7/8" Str.</b>	Price					
		Part #	32-00425	32-00426	32-00427	32-00428	32-00429
Weight		69	85	92	103	115	
<b>1-7/8" Std.</b>	Price						
	Part #	32-00425	32-00426	32-00427	32-00428	32-00429	
	Weight	77	96	104	112	120	
<b>4'</b>	<b>1-5/8" Str.</b>	Price					
		Part #	27-00405	27-00406	27-00407	27-00408	27-00409
		Weight	47	57	63	69	75
	<b>1-5/8" Std.</b>	Price					
		Part #	27-00405	27-00406	27-00407	27-00408	27-00409
		Weight	61	75	83	85	88
	<b>1-7/8" Str.</b>	Price					
		Part #	32-00405	32-00406	32-00407	32-00408	32-00409
Weight		72	90	98	109	121	
<b>1-7/8" Std.</b>	Price						
	Part #	32-00405	32-00406	32-00407	32-00408	32-00409	
	Weight	81	102	110	116	122	

\* Opening ( Op ) = Clear Distance Between Two Gate Post.

**\* Add For The Following:**

Add For PVC Chain Link Filler - P/ Sq. Ft.  
 Add For 9 ga Chain Link Filler - Per Sq. Ft.  
 Add For Slat Fence Filler - P/Sq. Ft.  
 Keyed Lever Latch

Since 1921

**\* INDUSTRIAL SINGLE SWING GATES**  
\* Includes Hinges And Latch Up To 4" - Specify Size

* Opening	Frame	Part #	Overall Height ( For "3" Strand Barb Top Go To Next Height )				
			5' H	6' H	7' H	8' H	9' H
5'	1-5/8" Str.	Price					
		Part #	27-00505	27-00506	27-00507	27-00508	27-00509
	Weight	52	62	68	73	78	
	1-5/8" Std.	Price					
		Part #	27-00505	27-00506	27-00507	27-00508	27-00509
	Weight	67	82	92	98	104	
	1-7/8" Str.	Price					
		Part #	32-00505	32-00506	32-00507	32-00508	32-00509
Weight	78	94	98	113	130		
1-7/8" Std.	Price						
	Part #	32-00505	32-00506	32-00507	32-00508	32-00509	
Weight	85	97	109	119	134		
6'	1-5/8" Std.	Price					
		Part #	28-00605	28-00606	28-00607	28-00608	28-00609
	Weight	67	72	90	95	100	
	1-7/8" Str.	Price					
		Part #	33-00605	33-00606	33-00607	33-00608	33-00609
	Weight	90	98	110	122	135	
1-7/8" Std.	Price						
	Part #	33-00605	33-00606	33-00607	33-00608	33-00609	
Weight	98	110	122	134	147		
8'	1-5/8" Std.	Price					
		Part #	28-00805	28-00806	28-00807	28-00808	28-00809
	Weight	79	91	105	116	128	
	1-7/8" Str.	Price					
		Part #	33-00805	33-00806	33-00807	33-00808	33-00809
	Weight	98	112	128	141	155	
1-7/8" Std.	Price						
	Part #	33-00805	33-00806	33-00807	33-00808	33-00809	
Weight	111	126	141	152	163		
10'	1-5/8" Std..	Price					
		Part #	28-01005	28-01006	28-01007	28-01008	28-01009
	Weight	85	95	109	119	129	
	1-7/8" Str.	Price					
		Part #	33-01005	33-01006	33-01007	33-01008	33-01009
	Weight	112	122	136	149	163	
1-7/8" Std.	Price						
	Part #	33-01005	33-01006	33-01007	33-01008	33-01009	
Weight	123	136	149	162	176		

**\* Opening ( Op ) = Clear Distance Between Two Gate Post.**

**\* Add For The Following:**

- Add For PVC Chain Link Filler - P/ Sq. Ft.
- Add For 9 ga Chain Link Filler - Per Sq. Ft.
- Add For Slat Fence Filler - P/Sq. Ft.
- Keyed Lever Latch

Since 1921

**\* INDUSTRIAL SINGLE SWING GATES**  
\* Includes Hinges And Latch Up To 4" - Specify Size

* Opening	Frame	Part #	Overall Height ( For "3" Strand Barb Top Go To Next Height )				
			5' H	6' H	7' H	8' H	9' H
12'	1-5/8" Std..	Price					
		Part #	28-01205	28-01206	28-01207	28-01208	28-01209
		Weight	99	110	122	132	142
	1-7/8" Str.	Price					
		Part #	33-01205	33-01206	33-01207	33-01208	33-01209
		Weight	126	136	149	162	176
1-7/8" Std.	Price						
	Part #	33-01205	33-01206	33-01207	33-01208	33-01209	
	Weight	136	149	162	175	189	
14'	1-5/8" Std..	Price					
		Part #	28-01405	28-01406	28-01407	28-01408	28-01409
		Weight	109	120	132	142	152
	1-7/8" Str.	Price					
		Part #	33-01405	33-01406	33-01407	33-01408	33-01409
		Weight	138	148	160	173	187
1-7/8" Std.	Price						
	Part #	33-01405	33-01406	33-01407	33-01408	33-01409	
	Weight	147	160	173	186	199	
16'	1-5/8" Std..	Price					
		Part #	28-01605	28-01606	28-01607	28-01608	28-01609
		Weight	118	130	143	153	163
	1-7/8" Str.	Price					
		Part #	33-01605	33-01606	33-01607	33-01608	33-01609
		Weight	147	161	172	184	196
1-7/8" Std.	Price						
	Part #	33-01605	33-01606	33-01607	33-01608	33-01609	
	Weight	160	172	184	197	210	
18'	1-5/8" Std..	Price					
		Part #	28-01805	28-01806	28-01807	28-01808	28-01809
		Weight	128	140	153	163	174
	1-7/8" Str.	Price					
		Part #	33-01805	33-01806	33-01807	33-01808	33-01809
		Weight	157	173	184	196	208
1-7/8" Std.	Price						
	Part #	33-01805	33-01806	33-01807	33-01808	33-01809	
	Weight	172	184	196	207	218	
20'	1-5/8" Std.	Price					
		Part #	28-02005	28-02006	28-02007	28-02008	28-02009
		Weight	138	150	163	173	184
	1-7/8" Str.	Price					
		Part #	33-02005	33-02006	33-02007	33-02008	33-02009
		Weight	167	179	190	202	214
1-7/8" Std.	Price						
	Part #	33-02005	33-02006	33-02007	33-02008	33-02009	
	Weight	182	196	210	220	231	

\* Opening ( Op ) = Clear Distance Between Two Gate Post.

\* Add For The Following:

Add For PVC Chain Link Filler - P/ Sq. Ft.  
Add For 9 ga Chain Link Filler - Per Sq. Ft.  
Add For Slat Fence Filler - P/Sq. Ft.  
Keyed Lever Latch

Since 1921

**\* INDUSTRIAL DOUBLE SWING GATES**  
\* Includes Hinges And Latch Up To 4" - Specify Size

* Opening	Frame	Part #	Overall Height ( For "3" Strand Barb Top Go To Next Height )				
			5' H	6' H	7' H	8' H	9' H
<b>8'</b>	<b>1-5/8" Str.</b>	Price					
		Part #	29-00805	29-00806	29-00807	29-00808	29-00809
	Weight	100	135	146	157	168	
	<b>1-5/8" Std.</b>	Price					
		Part #	29-00805	29-00806	29-00807	29-00808	29-00809
	Weight	112	166	173	187	202	
	<b>1-7/8" Str.</b>	Price					
		Part #	34-00805	34-00806	34-00807	34-00808	34-00809
Weight	167	183	199	215	232		
<b>1-7/8" Std.</b>	Price						
	Part #	34-00805	34-00806	34-00807	34-00808	34-00809	
Weight	185	201	217	233	250		
<b>10'</b>	<b>1-5/8" Str..</b>	Price					
		Part #	29-01005	29-01006	29-01007	29-01008	29-01009
	Weight	115	146	159	172	186	
	<b>1-5/8" Std.</b>	Price					
		Part #	29-01005	29-01006	29-01007	29-01008	29-01009
	Weight	132	178	189	205	222	
	<b>1-7/8" Str.</b>	Price					
		Part #	34-01005	34-01006	34-01007	34-01008	34-01009
Weight	182	198	214	230	230		
<b>1-7/8" Std.</b>	Price						
	Part #	34-01005	34-01006	34-01007	34-01008	34-01009	
Weight	203	219	235	251	268		
<b>12'</b>	<b>1-5/8" Str..</b>	Price					
		Part #	29-01205	29-01206	29-01207	29-01208	29-01209
	Weight	129	157	171	186	202	
	<b>1-5/8" Std.</b>	Price					
		Part #	29-01205	29-01206	29-01207	29-01208	29-01209
	Weight	152	189	205	222	240	
	<b>1-7/8" Str.</b>	Price					
		Part #	34-01205	34-01206	34-01207	34-01208	34-01209
Weight	197	213	229	245	262		
<b>1-7/8" Std.</b>	Price						
	Part #	34-01205	34-01206	34-01207	34-01208	34-01209	
Weight	221	237	253	269	286		

**\* Opening = Clear Distance Between Two Gate Post.**

* Add For The Following:	
Add For PVC Chain Link Filler	p/sq. ft.
Add For 9 ga Galv Chain Link	p/sq. ft.
Add For Slat Fence Filler	p/sq. ft.

Since 1921

**\* INDUSTRIAL DOUBLE SWING GATES**  
\* Includes Hinges And Latch Up To 4" - Specify Size

* Opening	Frame	Part #	Overall Height ( For "3" Strand Barb Top Go To Next Height )				
			5' H	6' H	7' H	8' H	9' H
<b>14'</b>	<b>1-5/8" Str..</b>	Price					
		Part #	29-01405	29-01406	29-01407	29-01408	29-01409
		Weight	145	168	185	202	220
	<b>1-5/8" Std.</b>	Price					
		Part #	29-01405	29-01406	29-01407	29-01408	29-01409
		Weight	173	202	221	241	263
	<b>1-7/8" Str.</b>	Price					
		Part #	34-01405	34-01406	34-01407	34-01408	34-01409
Weight		212	228	244	260	277	
<b>1-7/8" Std.</b>	Price						
	Part #	34-01405	34-01406	34-01407	34-01408	34-01409	
	Weight	239	255	271	287	304	
<b>16'</b>	<b>1-5/8" Std.</b>	Price					
		Part #	29-01605	29-01606	29-01607	29-01608	29-01609
		Weight	193	214	237	259	283
	<b>1-7/8" Str.</b>	Price					
		Part #	34-01605	34-01606	34-01607	34-01608	34-01609
	<b>1-7/8" Std.</b>	Price					
Part #		34-01605	34-01606	34-01607	34-01608	34-01609	
<b>20'</b>	<b>1-5/8" Std.</b>	Price					
		Part #	29-02005	29-02006	29-02007	29-02008	29-02009
		Weight	233	244	270	285	300
	<b>1-7/8" Str.</b>	Price					
		Part #	34-02005	34-02006	34-02007	34-02008	34-02009
	<b>1-7/8" Std.</b>	Price					
Part #		34-02005	34-02006	34-02007	34-02008	34-02009	
<b>24'</b>	<b>1-5/8" Std.</b>	Price					
		Part #	29-02405	29-02406	29-02407	29-02408	29-02409
		Weight	198	220	244	264	287
	<b>1-7/8" Str.</b>	Price					
		Part #	34-02405	34-02406	34-02407	34-02408	34-02409
	<b>1-7/8" Std.</b>	Price					
Part #		34-02405	34-02406	34-02407	34-02408	34-02409	
		Weight	311	327	361	377	396

**\* Opening = Clear Distance Between Two Gate Post.**

* Add For The Following:	
Add For PVC Chain Link Filler	p/sq. ft.
Add For 9 ga. Galv. Chain Link	p/sq. ft.
Add For Slat Fence Filler	p/sq. ft.

Since 1921

**\* INDUSTRIAL DOUBLE SWING GATES**  
\* Includes Hinges And Latch Up To 4" - Specify Size

* Opening	Frame	Part #	Overall Height ( For "3" Strand Barb Top Go To Next Height )				
			5' H	6' H	7' H	8' H	9' H
<b>28'</b>	<b>1-5/8" Std.</b>	Price					
		Part #	29-02805	29-02806	29-02807	29-02808	29-02809
		Weight	218	240	264	284	307
	<b>1-7/8" Str.</b>	Price					
		Part #	34-02805	34-02806	34-02807	34-02808	34-02809
		Weight	317	333	349	365	383
<b>1-7/8" Std.</b>	Price						
	Part #	34-02805	34-02806	34-02807	34-02808	34-02809	
	Weight	347	363	397	413	430	
<b>30'</b>	<b>1-5/8" Std.</b>	Price					
		Part #	29-03005	29-03006	29-03007	29-03008	29-03009
		Weight	228	250	275	295	319
	<b>1-7/8" Str.</b>	Price					
		Part #	34-03005	34-03006	34-03007	34-03008	34-03009
		Weight	332	348	364	380	399
<b>1-7/8" Std.</b>	Price						
	Part #	34-03005	34-03006	34-03007	34-03008	34-03009	
	Weight	365	381	415	431	448	
<b>32'</b>	<b>1-5/8" Std.</b>	Price					
		Part #	29-03205	29-03206	29-03207	29-03208	29-03209
		Weight	236	260	286	306	327
	<b>1-7/8" Str.</b>	Price					
		Part #	34-03205	34-03206	34-03207	34-03208	34-03209
		Weight	347	363	379	395	415
<b>1-7/8" Std.</b>	Price						
	Part #	34-03205	34-03206	34-03207	34-03208	34-03209	
	Weight	373	399	433	449	104	
<b>36'</b>	<b>1-5/8" Std.</b>	Price					
		Part #	29-03605	29-03606	29-03607	29-03608	29-03609
		Weight	256	280	306	326	349
	<b>1-7/8" Str.</b>	Price					
		Part #	34-03605	34-03606	34-03607	34-03608	34-03609
		Weight	377	393	409	425	442
<b>1-7/8" Std.</b>	Price						
	Part #	34-03605	34-03606	34-03607	34-03608	34-03609	
	Weight	419	435	469	485	505	
<b>40'</b>	<b>1-7/8" Str.</b>	Price					
		Part #	34-04005	34-04006	34-04007	34-04008	34-04009
		Weight	407	423	439	455	473
	<b>1-7/8" Std.</b>	Price					
		Part #	34-04005	34-04006	34-04007	34-04008	34-04009
		Weight	455	471	505	521	541

**\* Opening = Clear Distance Between Two Gate Post.**

* Add For The Following:	
Add For PVC Chain Link Filler	p/sq. ft.
Add For 9 ga Chain Link Filler	p/sq. ft.
Add For Slat Fence Filler	p/sq. ft.

Since 1921

**\* INDUSTRIAL SINGLE SLIDE GATES**  
Includes 6" x 6" Dbl Ground Wheel, Slide Track & Hardware 35-GTRAC

* Opening	Frame	Part #	Overall Height ( For "3" Strand Barb Top Go To Next Height )				
			5' H	6' H	7' H	8' H	9' H
6'	1-5/8" Std.	Price					
		Part #	30-00605	30-00606	30-00607	30-00608	30-00609
	Weight	123	140	155	171	188	
	1-7/8" Str.	Price					
		Part #	35-00605	35-00606	35-00607	35-00608	35-00609
	Weight	139	158	167	181	199	
1-7/8" Std.	Price						
	Part #	35-00605	35-00606	35-00607	35-00608	35-00609	
Weight	150	170	180	195	215		
8'	1-5/8" Std.	Price					
		Part #	30-00805	30-00806	30-00807	30-00808	30-00809
	Weight	158	168	185	194	213	
	1-7/8" Str.	Price					
		Part #	35-00805	35-00806	35-00807	35-00808	35-00809
	Weight	158	168	185	194	213	
1-7/8" Std.	Price						
	Part #	35-00805	35-00806	35-00807	35-00808	35-00809	
Weight	175	185	200	210	231		
10'	1-5/8" Std.	Price					
		Part #	30-01005	30-01006	30-01007	30-01008	30-01009
	Weight	150	164	180	195	211	
	1-7/8" Str.	Price					
		Part #	35-01005	35-01006	35-01007	35-01008	35-01009
	Weight	178	193	212	229	248	
1-7/8" Std.	Price						
	Part #	35-01005	35-01006	35-01007	35-01008	35-01009	
Weight	200	218	238	257	278		
12'	1-5/8" Std.	Price					
		Part #	30-01205	30-01206	30-01207	30-01208	30-01209
	Weight	176	189	205	222	241	
	1-7/8" Str.	Price					
		Part #	35-01205	35-01206	35-01207	35-01208	35-01209
	Weight	196	221	239	259	280	
1-7/8" Std.	Price						
	Part #	35-01205	35-01206	35-01207	35-01208	35-01209	
Weight	230	250	270	290	313		

**\* Opening = Clear Distance Between Two Gate Post.**

**\* Add For The Following:**

Add For PVC Chain Link Filler - P/ Sq. Ft.  
 Add For 9 ga Chain Link Filler - Per Sq. Ft.  
 Add For Slat Fence Filler - P/Sq. Ft.  
 Add for 12" Wide x 6" or 8" Double Ground Wheel  
 "V" Groove Double Ground Wheel  
 Angle Track For "V" Groove Wheel x 20'

Since 1921

**\* INDUSTRIAL SINGLE SLIDE GATES**  
Includes 6" x 6" Dbl Ground Wheel, Slide Track & Hardware 35-GTRAC

* Opening	Frame		Overall Height ( For "3" Strand Barb Top Go To Next Height )				
			5' H	6' H	7' H	8' H	9' H
14' f	1-5/8" Std.	Price					
		Part #	N/A	30-01406	30-01407	30-01408	30-01409
		Weight	189	205	223	240	259
	1-7/8" Str.	Price					
		Part #	N/A	35-01406	35-01407	35-01408	35-01409
		Weight	223	241	261	280	302
1-7/8" Std.	Price						
	Part #	N/A	35-01406	35-01407	35-01408	35-01409	
	Weight	271	282	309	320	333	
16' f	1-5/8" Std.	Price					
		Part #	N/A	30-01606	30-01607	30-01608	30-01609
		Weight	193	215	237	259	283
	1-7/8" Str.	Price					
		Part #	N/A	35-01606	35-01607	35-01608	35-01609
		Weight	227	252	277	302	330
1-7/8" Std.	Price						
	Part #	N/A	35-01606	35-01607	35-01608	35-01609	
	Weight	271	282	309	320	349	
18' f	1-5/8" Std.	Price					
		Part #	N/A	30-01806	30-01807	30-01808	30-01809
		Weight	213	227	250	264	280
	1-7/8" Str.	Price					
		Part #	N/A	35-01806	35-01807	35-01808	35-01809
		Weight	254	266	292	304	326
1-7/8" Std.	Price						
	Part #	N/A	35-01806	35-01807	35-01808	35-01809	
	Weight	290	298	327	337	258	
20' f	1-5/8" Std.	Price					
		Part #	N/A	30-02006	30-02007	30-02008	30-02009
		Weight	225	235	265	295	327
	1-7/8" Str.	Price					
		Part #	N/A	35-02006	35-02007	35-02008	35-02009
		Weight	245	294	313	322	332
1-7/8" Std.	Price						
	Part #	N/A	35-02006	35-02007	35-02008	35-02009	
	Weight	305	315	345	382	424	

**\* Opening = Clear Distance Between Two Gate Post.**

**\* Add For The Following:**

- Add For PVC Chain Link Filler - P/ Sq. Ft.
- Add For 9 ga Chain Link Filler - Per Sq. Ft.
- Add For Slat Fence Filler - P/Sq. Ft.
- Add for 12" Wide x 6" or 8" Double Ground Wheel
- "V" Groove Double Ground Wheel
- Angle Track For "V" Groove Wheel x 20'



**FULL CANTILEVER ROLLING GATE**  
Includes 4" Cantilever Rollers, Gate Latch

Actual Frame Width, 1/3 Greater Than Gate Opening Frame: 2 3/8" Horizontals, 1 7/8" Verticals, 1 5/8" Diagonal Bracing.					
Overall Height ( For "3" Strand Barb Top Go To Next Height )					
* Opening	5' H	6' H	7' H	8' H	9' H
16' f With Sway Brace P/N	38-00165	38-00166	38-00167	38-00168	38-00169
18' f With Sway Brace P/N	38-00185	38-00186	38-00187	38-00188	38-00189
20' f With Sway Brace P/N	38-00205	38-00206	38-00207		38-00209
24' f With Sway Brace P/N	38-00245	38-00246	38-00247	38-00248	38-00249
26' f With Sway Brace P/N	38-00265	38-00266	38-00267	38-00268	38-00269
28' f With Sway Brace P/N	38-00285	38-00286	38-00287	38-00288	38-00289
30' f With Sway Brace P/N	38-00305	38-00306	38-00307	38-00308	38-00309

**\* Opening = Clear Distance Between Two Gate Post**  
**Sway Brace: Horizontal 2" x 4" x 14 ga.**

**\* Add For The Following**

Add For 6 5/8" UMHV Cantilever Wheels - Each:  
Add For PVC Chain Link Filler - P/ Sq. Ft.  
Add For 9 ga Chain Link Filler - Per Sq. Ft.  
Add For Slat Fence Filler - P/Sq. Ft.

Since 1921

***GATE POST  
Dimensions and Weight***

**For Gate Fabric Height 6' or Less:**

	Outside Diameter Of Pipe, inches	Minimum Weight lbs/foot
Up to and including 4' wide	2-3/8"	3.11
Over 4' to 10' wide	2-7/8"	4.64
Over 10' to 18' wide	4"	8.65

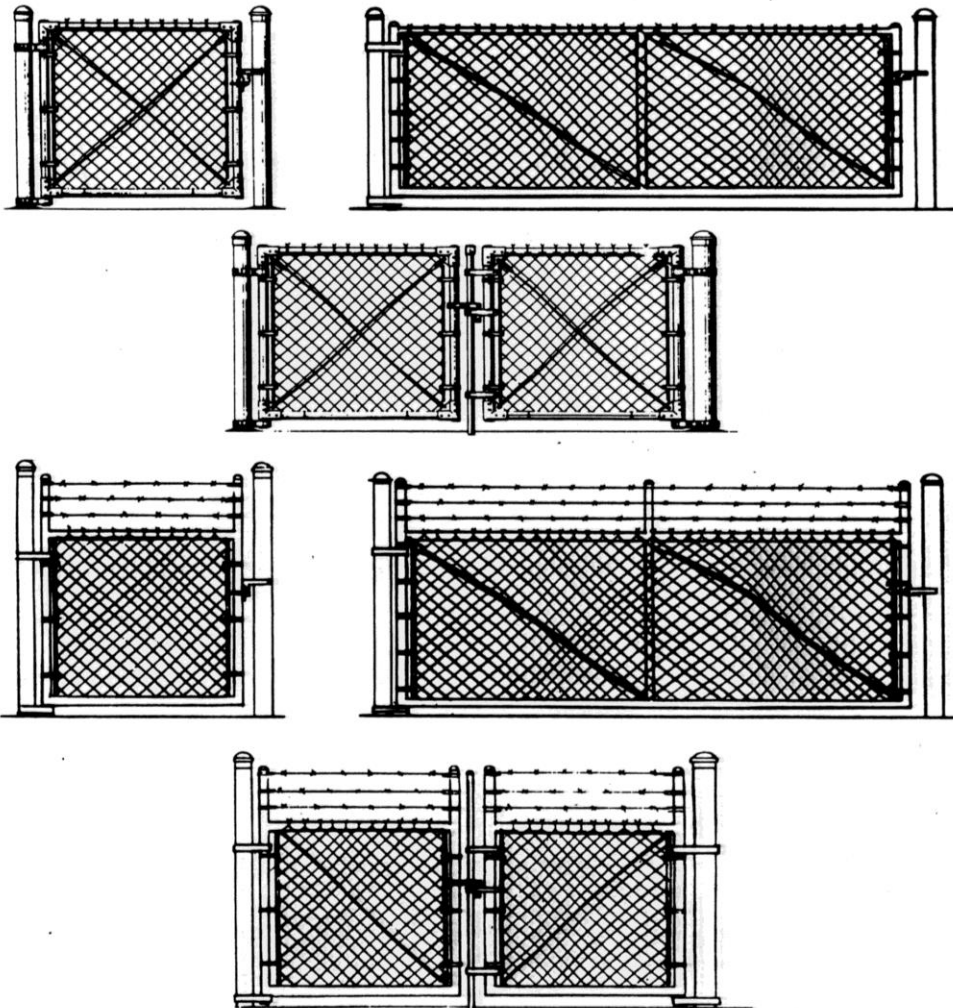
**For Gate Fabric Height Over 6'**

	Outside Diameter Of Pipe, inches	Minimum Weight lbs/foot
Up to and including 6' wide	2-7/8"	4.64
Over 6' to 12' wide	4"	8.65
Over 12' to 18' wide	6-5/8"	18.02
Over 18' to 24' wide	8-5/8"	27.12

Since 1921

## INDUSTRIAL SWING GATES

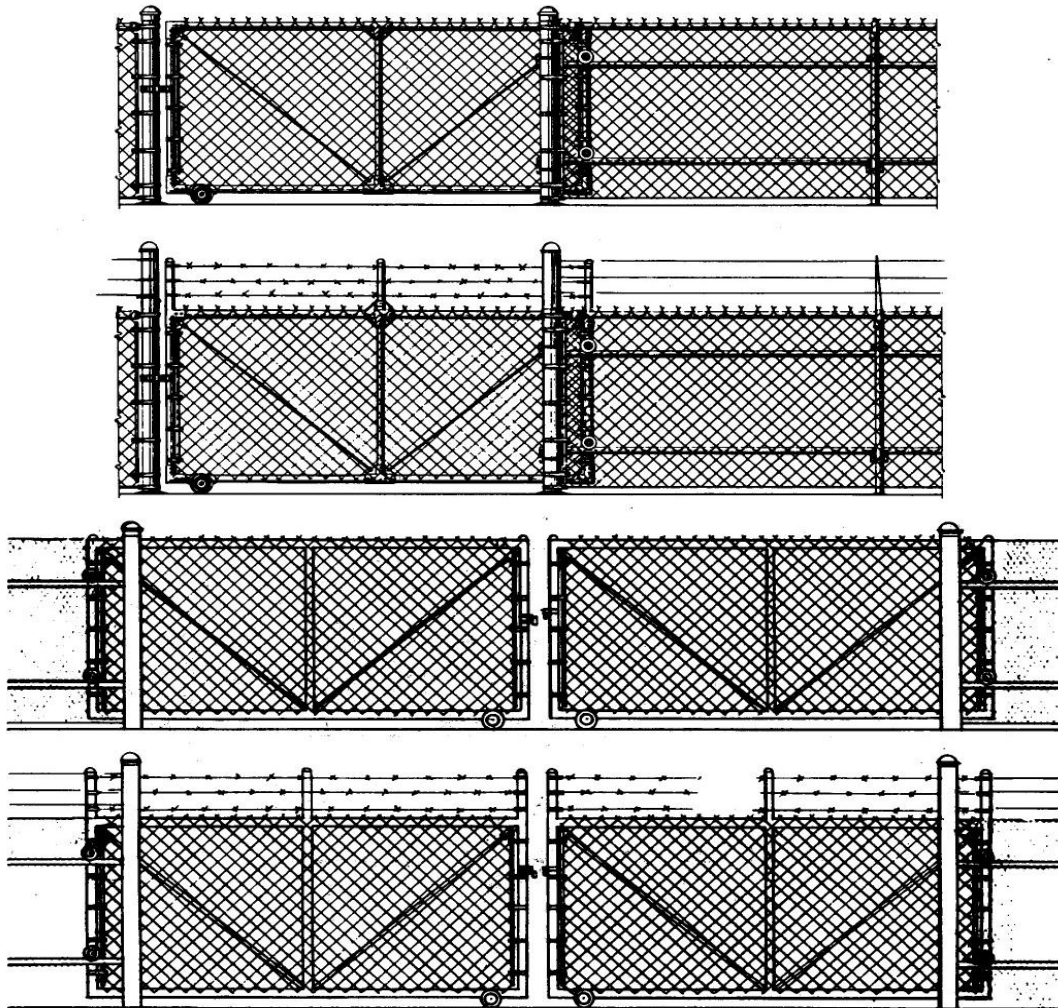
Constructed of 1-5/8" or 1-7/8" O.D. galvanized tubular frame, galvanized chain link filler, vinyl coated chain link filler or slat fence filler. Walk gates are furnished with a malleable fork latch and 90 degree post hinges up to 2-7/8" O.D. Single drive and double drive gates are furnished with 90 degree hinges or 180 degree hinges up to 4" O.D. Specify O.D. size of gate post when ordering. Width of gate is actual opening between posts, allowance has been made for fittings. For three strands of barb wire use next higher price. Gate panels are braced and trussed as required. For 6-5/8" fittings add difference in cost between 4" fittings and 6-5/8" fittings.



Since 1921

## INDUSTRIAL SLIDE GATE

Constructed of 1-5/8" or 1-7/8" galvanized tubular frame, galvanized chain link filler, vinyl coated chain link filler, or slat fence filler. Gates are furnished with 1-5/8" O.D. tubular pipe track, wheels and fittings. For single slide gates, specify right or left slide to open from outside of fence. For three strands of barb wire use next higher price bracket. Slide gate panels are braced and trussed as required.



Since 1921

## FULL CANTILEVER ROLLING GATES

Constructed of 1-7/8" or 2-3/8" O.D. galvanized pipe frame with welded corners and bracing. Gates are furnished with chain link filler or slat fence filler. Each cantilever gate is furnished with 4 rollers. Please specify left or right side to open from outside of fence.

NOTE: Overall width of gate is 50% greater than the opening size listed. This type of gate will require either 2-7/8" or 4" O.D. posts.

