

# WCFIX PLUS

## COMPACT SEWAGE LIFTING STATION

The WCFIX Plus is the ideal solution for domestic and light commercial toilet pumping applications in situations where the required discharge pipe run from toilet to sewer is higher, longer, has multiple bends such that other toilet pump units cannot operate/perform. This pump also features anti-flooding hose for overfill and buoyancy protection.

*Pump higher  
& further.*



### KEY FEATURES

- Compact and sophisticated design with easy-to-clean surfaces
- Ventilation valve with activated carbon filter to reduce odours
- Powerful yet extremely quiet motor
- Run-time monitoring (1 min approx) with acoustic alarm



Introducing

 **PENTAIR JUNG PUMPEN**

# WCFIX PLUS

## COMPACT SEWAGE LIFTING STATION

**YOUR BEST SOLUTION TO DISCHARGING WASTEWATER WHERE THERE IS NO DIRECT ACCESS TO THE MAIN SEWAGE PIPE.**

The **WCFIX Plus** offers an ideal solution to pumping out domestic effluent from remote areas that has limited or no direct access to the main sewage pipe line. Up to 19 mm free passage, it can easily discharge wastewater that includes toilet paper and faeces.

### FEATURES

- Suitable for toilet flush volume of minimum 6 liters or greater
- Compact and sophisticated design with easy-to-clean surfaces
- Ventilation valve with activated carbon filter
- Powerful yet quiet motor
- Acoustic alarm to signal faults including blockage
- Up to 19 mm free passage comfortably discharging toilet paper and faeces
- For installation behind a front-wall or with a direct connection (to the toilet)
- Easy disassembly of the motor with no need to empty the pressure pipe



### Hands-free operations!

Carrying out maintenance and rectifying faults has never been so quick, clean and trouble-free. Pump is disassembled in seconds.

### Outstanding adaptability

A new application in just a few easy steps. Transforms from a front-wall lifting station to a direct connection lifting station in an instant!



NEW  
PRODUCT



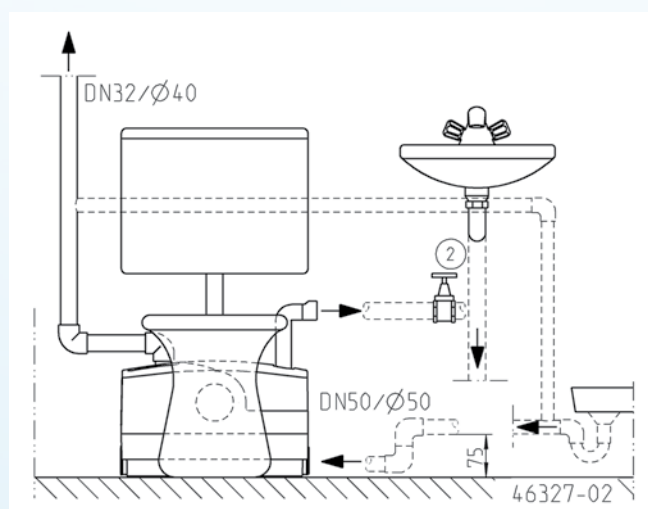
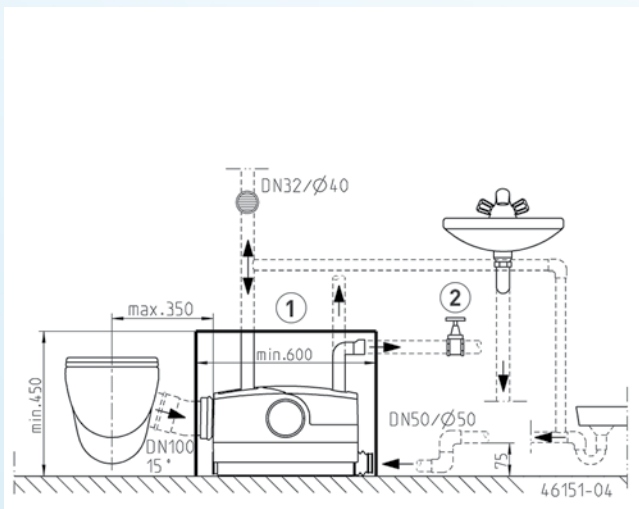
## SPECIFICATIONS

| Voltage                     | Motor rating<br>P1 (W)      | Weight<br>kg | Hmax<br>m           | Qmax<br>l/min  |
|-----------------------------|-----------------------------|--------------|---------------------|----------------|
| 230VAC 50Hz                 | 720                         | 6.2 kg       | 9                   | 208            |
| Dimensions<br>(HxWxD in mm) | Inlets<br>mm                | Outlet<br>mm | Max.<br>water temp. | Code no.       |
| 280x460x170                 | 1x Ø40<br>2x Ø50<br>1x Ø100 | 1x DN25/DN32 | 35 °C               | <b>JP47402</b> |

## THE ALL-ROUNDER WCFIX PLUS

One unit for all applications! Whether hidden behind a modern front-wall system or connected directly to a floor-standing toilet, all types of connection can be made with ease with the WCFix Plus. All of the necessary installation accessories are provided which makes it relatively easy to assemble and disassemble.

This integrated pump has four different inlet openings that provide flexible connection options. This means that a shower, a washbasin, a bidet and a toilet can be connected into the one unit all at the same time! The appliance is pre-assembled, ready for connection to a power socket and operates fully automatically as soon as the flush is actuated.



## TECHNICAL DATA

| Type        | P/No.   | Voltage ±10% | Motor Rating P1 | Motor Rating P2 | Current | Enclosure Type | Motor Protection         | Plug    | S3  |
|-------------|---------|--------------|-----------------|-----------------|---------|----------------|--------------------------|---------|-----|
| WC FIX PLUS | JP47402 | 230VAC 50Hz  | 0.73 kW         | 0.47 kW         | 3.2 A   | IP 44          | Installed in the winding | ANZ 10A | 30% |

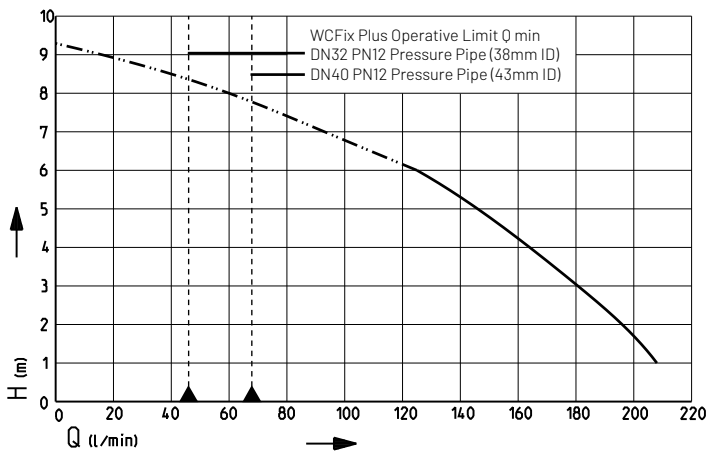
## FLOW RATE

| Deliver Head H (m)  | 1   | 2   | 3   | 4   | 5   | 6   |
|---------------------|-----|-----|-----|-----|-----|-----|
| Flow rate Q (l/min) | 208 | 196 | 183 | 163 | 146 | 125 |

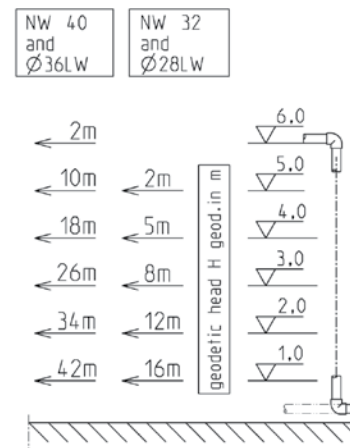
## MATERIAL CONSTRUCTION

| Seal on Motor Side | Oil Chamber | Seal on Medium Side | Shaft           | Impeller             | Motor Housing   | Pump Housing | Weight |
|--------------------|-------------|---------------------|-----------------|----------------------|-----------------|--------------|--------|
| Rotary shaft seal  | Yes         | Rotary shaft seal   | Stainless Steel | Vortex Impeller, GFK | Stainless Steel | GRP          | 6.2 kg |

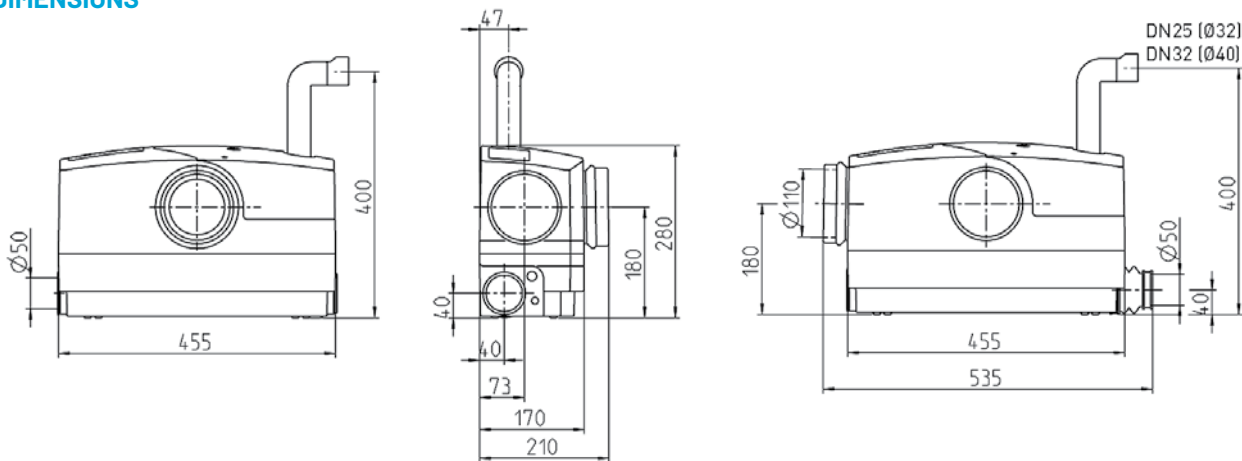
## PERFORMANCE



Max. horizontal length of pressure pipe incl. 2 elbows and a swing-type check valve 1 1/4"



## DIMENSIONS



1-21 Monash Drive | Dandenong South, VIC 3175 | Australia | 1300 137 344 | pentair.com.au

Information contained here-in remains the property of Pentair under Australian copyright law. Content may not be reproduced or transmitted without our prior written permission.

© 2022 Pentair. All rights reserved. This document is subject to change without notice.