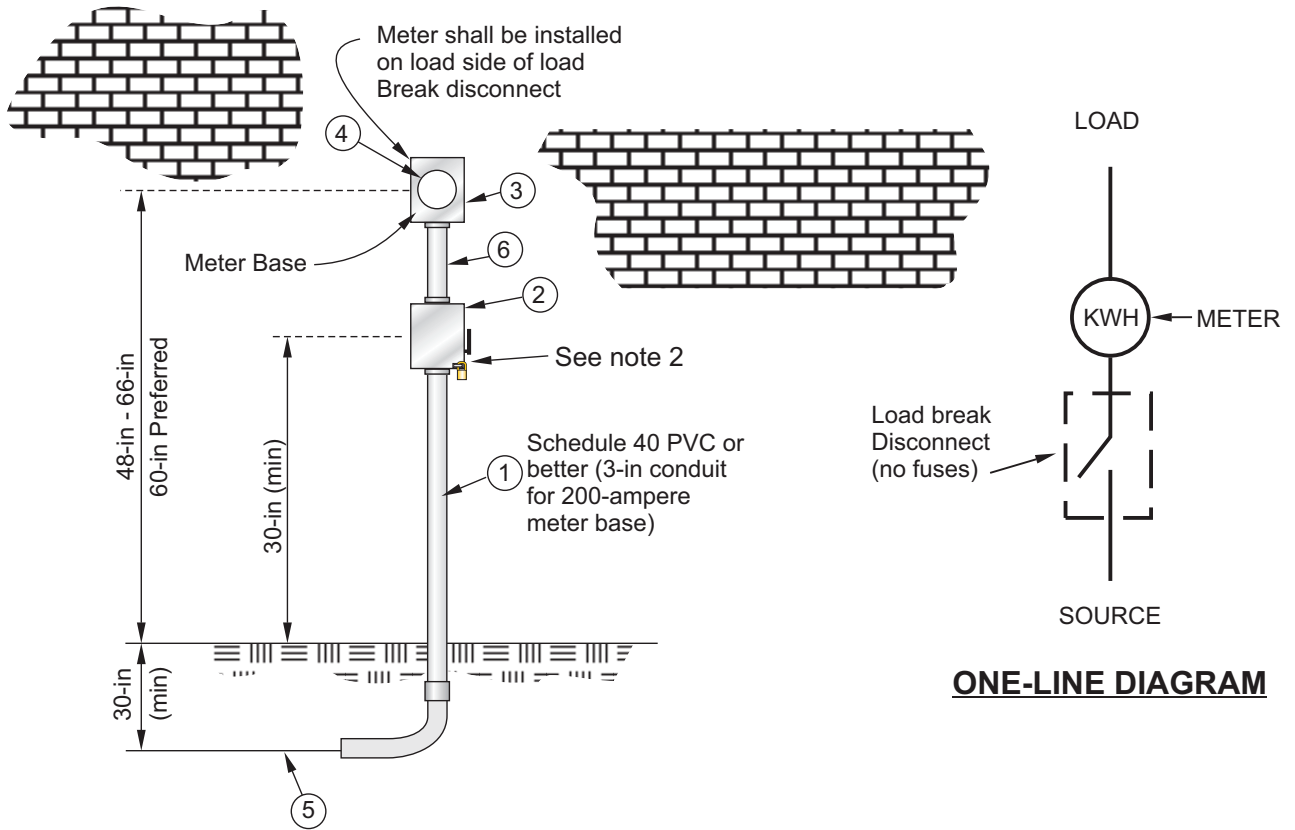


The following is a suggested configuration for meter bases for overhead and underground meters in residential and commercial applications. OG&E Energy Corp., its subsidiaries and affiliates disclaim any liability for the construction or maintenance practices relating to such suggested configuration.



| ITEM NO. | DESCRIPTION | FURNISHED BY | | INSTALLED BY | |
|----------|---|--------------|----------|--------------|----------|
| | | O.G. & E. | CONSUMER | O.G. & E. | CONSUMER |
| 1 | Service Lateral Raceway | | X | | X |
| 2 | Load-Break Disconnect | See Note 1 | X | | X |
| 3 | Meter Base | X | | | X |
| 4 | Self-Contained Meter | X | | X | |
| 5 | Service Lateral | X | | X | |
| 6 | Service Raceway | | X | | X |
| * 7 | Service Equipment | | X | | X |
| * 8 | Grounding Electrode & Grounding Electrode Conductor | | X | | X |

* Not Shown

Notes:

- OG&E to furnish Load-Break Disconnect for 480-volt service in Arkansas
- OG&E to secure **load-break disconnect box** with series 1 lock (stk#301326).
- OG&E equipment is to be installed on outside surface of structure and is not to be recessed.
- Refer to U16 for proper identification and marking.

**METER INSTALLATION
FOR SELF-CONTAINED METER**

480 OR 480Y/277-VOLTS 200-AMPERES MAXIMUM

APPROVED **Signatures on File**

SUPERSEDES FEB 2015 ISSUE