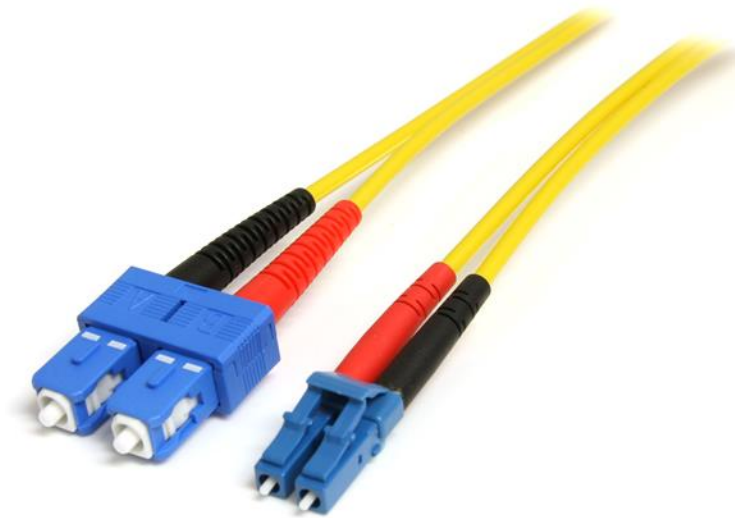


Fiber Optic Cable - Single-Mode Duplex 9/125 - LSZH - LC/SC - 1 m

Product ID: SMFIBLCSC1



The SMFIBLCSC1 1m LC to SC Single-Mode Duplex Fiber Cable features 9/125 micron fiber for high-speed, high bandwidth data transmissions over Gigabit Ethernet and Fiber Channel networks, with support for duplex single-mode applications.

This LC-SC patch cable is housed in a LSZH (Low-Smoke, Zero-Halogen) flame retardant jacket, to ensure minimal smoke, toxicity and corrosion when exposed to high sources of heat, in the event of a fire - an ideal solution for use in industrial settings, central offices and schools, as well as residential settings where building codes are a consideration.

Each Duplex 9/125 (OS1) Single-Mode Fiber Patch Cable is individually tested and certified to be within acceptable optical insertion loss limits for guaranteed compatibility and 100% reliability, and is backed by our lifetime warranty.

Certifications, Reports and Compatibility



Applications

- Ideal solution for data applications requiring high speed data transmission
- Broadband systems
- Telecommunication / Data communication
- Used by long distance networks with mission critical data

Features

- OS1 (9/125)
- LSZH (Low-Smoke, Zero-Halogen) cable jacket
- Attenuation loss meets or exceeds industry standards
- Molded connectors

Hardware	Warranty	Lifetime
	Fiber Size	9/125
	Fire Rating	LSZH Rated (Low Smoke Zero Halogen)
Performance	Cable Rating	10Gbps / 40Gbps / 100Gbps
	Fiber Classification	OS1
	Maximum Data Transfer Rate	100Gbps
Connector(s)	Connector A	1 - Fiber Optic LC Duplex Male
	Connector B	1 - Fiber Optic SC Duplex Male
Environmental	Humidity	0~90% RH
	Operating Temperature	-20°C to 60°C (-4°F to 140°F)
	Storage Temperature	-20°C to 60°C (-4°F to 140°F)
Physical Characteristics	Cable Length	1 m [3.3 ft]
	Color	Yellow
	Product Length	1 m [3.3 ft]
	Product Weight	18 g [0.6 oz]
Packaging Information	Shipping (Package) Weight	0 kg [0.1 lb]
What's in the Box	Included in Package	1 - 1m Single Mode Duplex Fiber Patch Cable LC-SC

Product appearance and specifications are subject to change without notice.